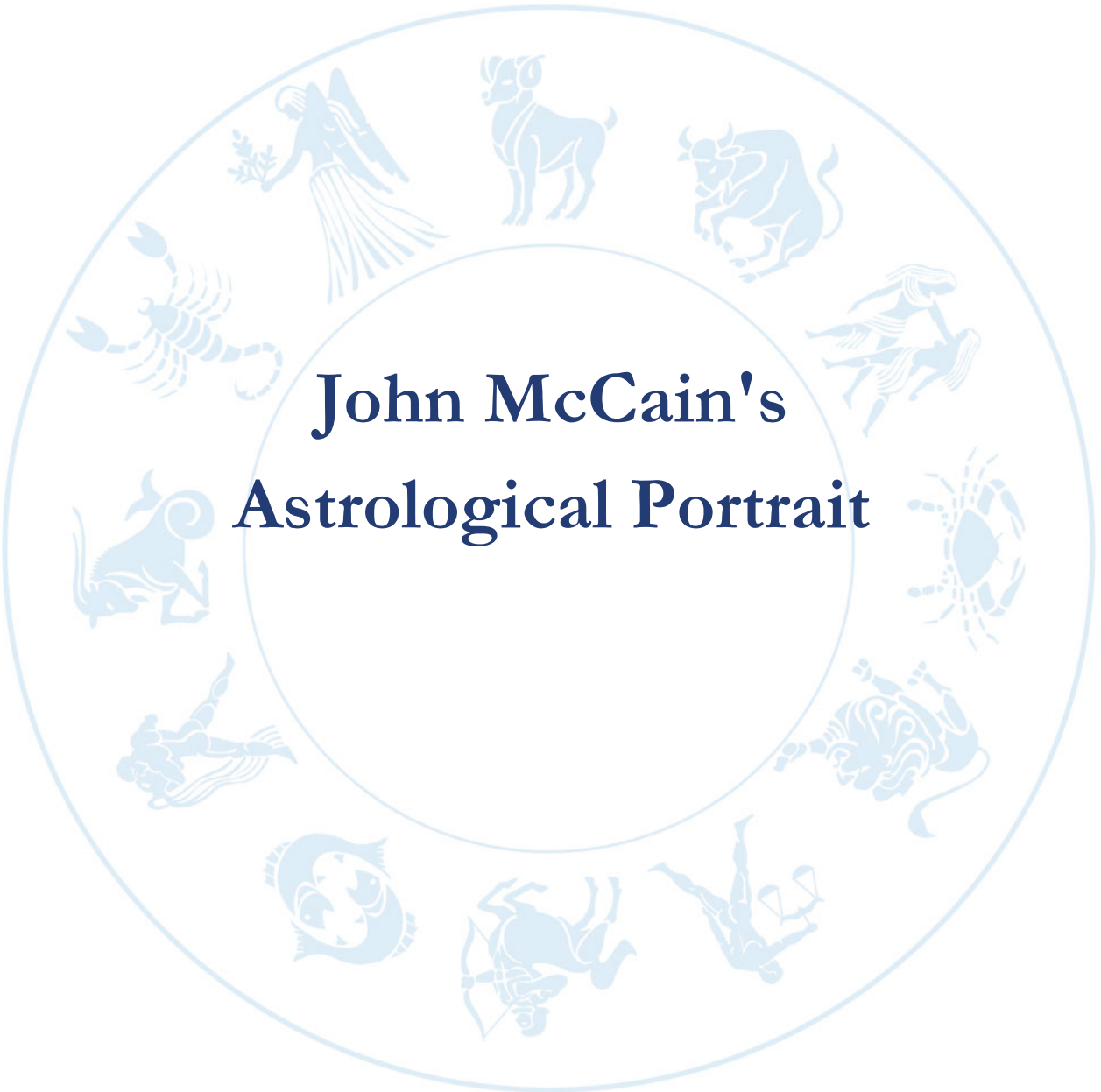




John McCain's Astrological Portrait





John McCain's Astrological Portrait



Introduction	2
Your Planets, Houses, Aspects, and Natal Chart	4
Preamble	7
Your Planetary Repartitions	8
Your Dominant Modes and Elements	9
Your Dominants: Planets, Signs and Houses	10
Your Style, Behaviour, and Peculiarities	15
Your Sensitivity	19
Your Affectivity	20
The Way You Take Action and Your Sexuality	22
Your Intellect and Your Communication Style	23
Your Goals, Motivations, Career, and Destiny	24
Your Assets and Your Part of Joviality	27
Your Serious Side	27
A Few Special Points	28
Your Isolated Planets	29
Annex 1: Your Minor Dominants	31
Annex 2: Karmic Study	35
Conclusion	37





John McCain's Astrological Portrait

Introduction

To fully benefit from this portrait, we suggest that you read its introduction and its preamble carefully, and then that to take the time to soak up the interpretations of each chapter. Given the large number of texts, which mirrors the human being's complexity, you may need to go through the contents several times, so as to get a good grasp of their meaning and to know yourself better. This will reward your patience.

The purpose of this report is to describe your psychological portrait and to highlight the most fundamental features on the personal area. The report begins with the analysis of your planetary dominants and outlines your personality's general traits before going into further detail. Minor dominants are analysed at the end of Annex 1, for purposes of clarity. Your report then delineates the various facets of your personality:

In general, even when relationships are not involved, we express ourselves and we feel according to our character and our personal motivations: this is indicated by the Ascendant and the Sun sign which both give details on the way we function. They shed a tremendously important light which allows to figure out your personality. Here, we describe your Sun sign (your inner self), your Ascendant (your behaviour as seen by others), and the ruler of the Ascendant (interesting additional pieces of information about the style of your personality). These descriptions alone cover nearly a third or a half of your psychological signature, depending on your natal chart characteristics.

Then, we address your sensitivity, or in other words, the way you receive things and how you express your emotions ; it works as a constant filter for all your exchanges, even when it becomes a more secondary element in your amorous relationship, because at that moment, affectivity prevails. Sensitivity is the way you perceive things, it is your radar, your daily mood, and at the same time, it indicates how you react to your entourage, on a daily basis. It is what others immediately see of you. In the second paragraph, we explain in which areas of life your sensitivity and your emotions are strongest, therefore, where you are most vulnerable.

After this, it is your affectivity, the way you love and how you charm, that comes into play as soon as you fall in love: the first part indicates its basic structure or its main form. The second part describes the areas where it is best expressed and how you display it, according to your personality.

A third fundamental area deals with your mode of action and your sexuality: how you behave, how you manage to obtain what you want, what kind of desires you have. There are twelve possibilities, very

different from one another. The study discloses the specific one that applies to you. In the second paragraph, we explain in which life areas you may most efficiently take advantage of your capacity for action and for conquest.

Your ways of communicating and of thinking are obviously among the major elements that must be integrated into the delineation and the description of your personality. Indeed, they influence your general behaviour and may modify or enhance the image your project (for instance, extraversion may “compensate” a weak affectivity, but a huge number of cases are possible). An additional chapter indicates the favourite areas where you enjoy communicating, thinking and meeting with people.

Besides, we analyze an even more personal aspect that is important to define and understand what may occur within your couple: each of us have a centre of interest, a privileged manner to be fulfilled or to achieve our destiny; this main motivation is indicated by the positions of your Sun and your chart ruler in the astrological houses and we provide you with its detailed description.

A natal chart contains the potential for specific fulfilment and a whole range of assets, protections and qualities. How does the lucky factor manifest in your personality? In which area can you best exploit your qualities? The answers are precisely revealed to you in this chapter.

On the other hand, we all feel in us a part of vulnerability, doubts and fears. How does this part of solemnity or serious side play out? How is it possible to handle it in order to evolve and to get rid of useless elements? All this information is provided to you in these two paragraphs.

Then, you can discover three additional traits of your personality that must be considered as secondary ones. They deal with your predispositions, which means that they need to be triggered by external events because they are not influenced by your will; let's call it a part of fate. Please, bear in mind that your destiny can unfold only in accordance with what you are: therefore, even if they belong to your more unconscious self, these characteristics are parts of you, definitely.

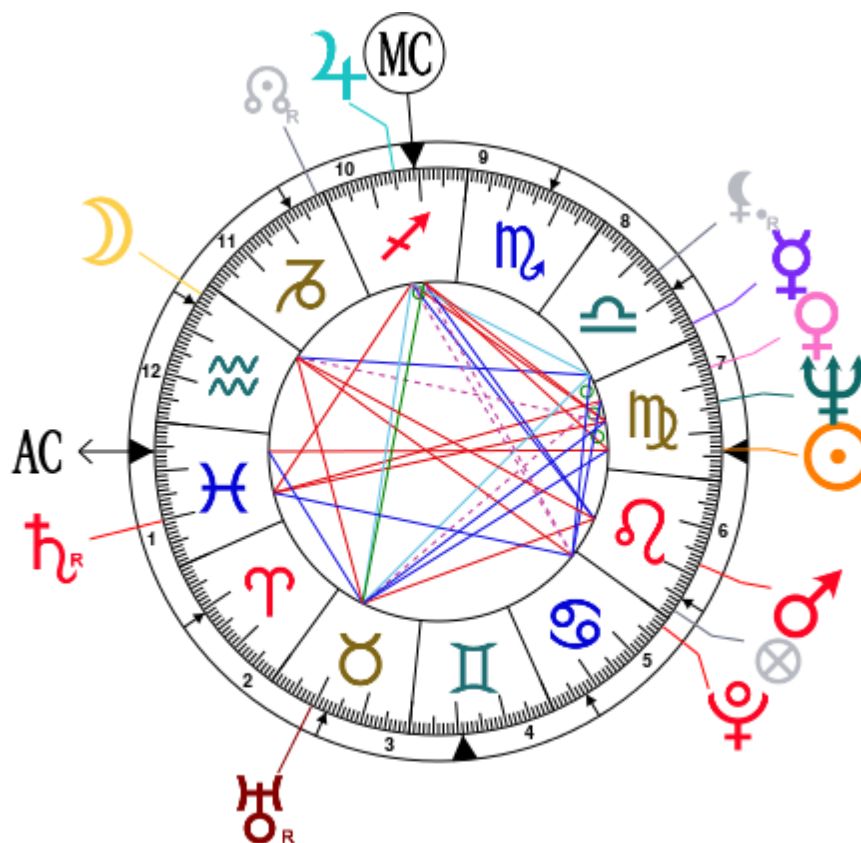
The karmic chart complements the psychological portrait or natal chart. It is based on the positions of the Lunar Nodes, the Black Moon, and the Part of Fortune. These elements of the chart, sometimes referred to as fictitious points, provide information about the spiritual meaning of your destiny. Owing to the fact that we all have in us acquired knowledge and the urge to go on a quest, our life is an evolutionary journey... However, these texts must be read with great caution: this is the reason why you will find this analysis in the Annex 2 of your report.

Your Planets, Houses, Aspects, and Natal Chart

John McCain, born August 29, 1936, at 06:25 PM, Colón (Colon), Panama [79.54W ; 9.22N ; 5W00]

Natal Planets				In House	Natal Houses (Placidus)			
☉ Sun	6°24'	♍ Virgo		House 7	House 1	6°00'	♓ Pisces	
☾ Moon	2°25'	♒ Aquarius		House 11	House 2	10°39'	♈ Aries	
☿ Mercury	2°44'	♎ Libra		House 7	House 3	12°40'	♉ Taurus	
♀ Venus	23°17'	♍ Virgo		House 7	House 4	10°54'	♊ Gemini	
♂ Mars	12°34'	♌ Leo		House 6	House 5	7°19'	♋ Cancer	
♃ Jupiter	15°06'	♐ Sagittarius		House 10	House 6	4°48'	♌ Leo	
♄ Saturn	20°07' R	♓ Pisces		House 1	House 7	6°00'	♍ Virgo	
♅ Uranus	9°30' R	♉ Taurus		House 2	House 8	10°39'	♎ Libra	
♆ Neptune	16°08'	♍ Virgo		House 7	House 9	12°40'	♏ Scorpio	
♇ Pluto	28°01'	♋ Cancer		House 5	House 10	10°54'	♐ Sagittarius	
♁ Node	1°26' R	♐ Capricorn		House 10	House 11	7°19'	♐ Capricorn	
☾ Lilith	15°25' R	♎ Libra		House 8	House 12	4°48'	♒ Aquarius	
AS AS	6°00'	♓ Pisces						
MC MC	10°54'	♐ Sagittarius						

In keeping with the common practice, we consider that a planet posited within 1 degree of the next house belongs to that house. We allow an orb of 2 degrees for the ASC and the MC.



List of Your Active Planetary Aspects

Please find below the list of all the active inter-aspects which are interpreted in this report, in addition to your planets in sign, in house, and all your planetary dominants. Since the aspects between slow-moving planets are of a collective nature, they are not displayed, in compliance with our interpretation rules.

- ★★★★★ Sun trine Uranus, orb -3° 05'
- ★★★★★ Sun conjunction Neptune, orb 9° 43'
- ★★★★★ Sun opposite Ascendant, orb -0° 24'
- ★★★☆☆ Sun square Midheaven, orb 4° 3'
- ★★★★★ Moon trine Mercury, orb -0° 19'
- ★★★☆☆ Moon opposite Mars, orb -10° 09'
- ★★★☆☆ Moon square Uranus, orb 7° 05'
- ★★★☆☆ Moon sesqui-quadrante Neptune, orb 1° 17'
- ★★★☆☆ Moon opposite Pluto, orb -4° 23'
- ★★★★★ Mercury conjunction Venus, orb 9° 26'
- ★★★★★ Mercury quintile Jupiter, orb 0° 22'
- ★★★★★ Mercury bi-quintile Uranus, orb -0° 46'
- ★★★★★ Mercury sextile Pluto, orb 4° 42'
- ★★★☆☆ Venus opposite Saturn, orb -3° 1'
- ★★★☆☆ Venus sesqui-quadrante Uranus, orb -1° 12'
- ★★★★★ Venus conjunction Neptune, orb 7° 09'
- ★★★★★ Venus sextile Pluto, orb -4° 43'
- ★★★★★ Mars trine Jupiter, orb 2° 32'
- ★★★☆☆ Mars square Uranus, orb 3° 03'
- ★★★★★ Mars trine Midheaven, orb -1° 39'
- ★★★☆☆ Jupiter square Saturn, orb 5'
- ★★★★★ Jupiter conjunction Midheaven, orb 4° 11'
- ★★★★★ Uranus sextile Ascendant, orb 3° 3'
- ★★★☆☆ Uranus inconjunction Midheaven, orb -1° 24'
- ★★★☆☆ Neptune square Midheaven, orb -5° 13'
- ★★★☆☆ Pluto sesqui-quadrante Midheaven, orb -2° 06'

Meaning of Stars

Stars indicate the strength of the aspects. Two solid coloured stars (there are half-stars also), mean that the aspect is powerful enough to be noticed at the first reading.

We strongly advise that you read the paragraphs displaying less than two stars later on, after you have absorbed the full import of the other texts.

The yellow colour indicates a soothing and conciliating aspect, and the red colour, a dynamic and tense aspect. The red aspects enable you to evolve, to take action, and to learn to turn your "weaknesses" into

assets through your life experiences. The yellow aspects are innate strengths on which you rely in order to grow better with the former...

Preamble

When interpreting a natal chart, the best method is to start gradually from general features to specific ones. Thus, there is usually a plan to be followed, from the overall analysis of the chart and its structure, to the description of its different character traits.

In the first part, an overall analysis of the chart enables us to figure out the personality's main features and to emphasize several points that are confirmed or not in the detailed analysis: in any case, those general traits are taken into account. Human personality is an infinitely intricate entity and describing it is a complex task. Claiming to rapidly summarize it is illusory, although it does not mean that it is an impossible challenge. It is essential to read a natal chart several times in order to absorb all its different meanings and to grasp all this complexity. But the exercise is worthwhile.

In brief, a natal chart is composed of ten planets: two luminaries, the Sun and the Moon, three fast-moving or individual planets, Mercury, Venus and Mars, two slow-moving planets, Jupiter and Saturn, and three very slow-moving planets, Uranus, Neptune and Pluto. Additional secondary elements are: the Lunar Nodes, the Dark Moon or Lilith, Chiron and other minor objects. They are all posited on the Zodiac wheel consisting of twelve signs, from Aries to Pisces, and divided into twelve astrological houses.

The first step is to evaluate the importance of each planet. This is what we call identifying the dominant planets. This process obeys rules that depend on the astrologer's sensitivity and experience but it also has precise and steady bases: thus, we can take into account the parameters of a planet's activity (the number of active aspects a planet forms, the importance of each aspect according to its nature and its exactness), angularity parameters; (proximity to the four angles, Ascendant, Midheaven, Descendant and Imum Coeli or Nadir, all of them being evaluated numerically, according to the kind of angle and the planet-angle distance) and quality parameters (rulership, exaltation, exile and fall). Finally, other criteria such as the rulership of the Ascendant and the Midheaven etc. are important.

These different criteria allow a planet to be highlighted and lead to useful conclusions when interpreting the chart.

The overall chart analysis begins with the observation of three sorts of planetary distributions in the chart: Eastern or Western hemisphere, Northern or Southern hemisphere, and quadrants (North-eastern, North-western, South-eastern and South-western). These three distributions give a general tone in terms of introversion and extraversion, willpower, sociability, and behavioural predispositions.

Then, there are three additional distributions: elements (called triplicity since there are three groups of signs for each one) - Fire, Air, Earth and Water - corresponding to a character typology, modality (or quadruplicity with four groups of signs for each one) - Cardinal, Fixed and Mutable - and polarity (Yin and Yang).

There are three types of dominants: dominant planets, dominant signs and dominant houses. The novice thinks astrology means only "to be Aries" or sometimes, for example, "to be Aries Ascendant Virgo". It is actually far more complex. Although the Sun and the Ascendant alone may reveal a large part of the character - approximately a third or a half of your psychological signature, a person is neither "just the Sun" (called the sign) nor just "the first house" (the Ascendant). Thus, a particular planet's influence

may be significantly increased; a particular sign or house may contain a group of planets that will bring nuances and sometimes weaken the role of the Ascendant, of the Sun sign etc.

Lastly, there are two other criteria: accentuations (angular, succedent and cadent) which are a classification of astrological houses and types of decanates that are occupied (each sign is divided into three decanates of ten degrees each). They provide some additional informations.

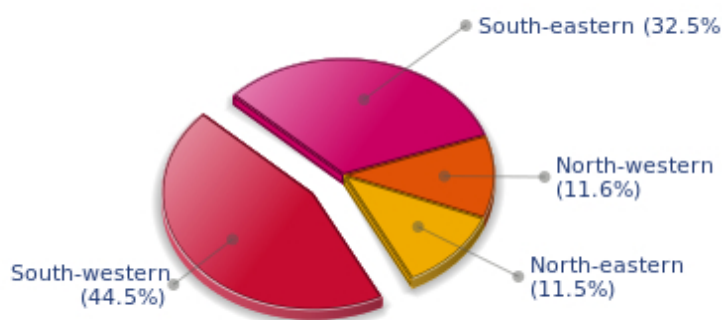
These general character traits must not be taken literally; they are, somehow, preparing for the chart reading. They allow to understand the second part of the analysis, which is more detailed and precise. It focuses on every area of the personality and provides a synthesis of all the above-mentioned parameters according to sound hierarchical rules.

As explained in the introduction of your Psychological Portrait report, minor dominants are analysed at the end of Annex 1, for purposes of clarity.

Your Planetary Repartitions

Each quadrant is a combination of the four hemispheres of your birth chart and relates to a character typology. The Southern hemisphere – the top of your chart, around the Midheaven – is associated with extraversion, action, and public life, whereas the Northern hemisphere prompts to introversion, reflexion, and private life. The Eastern hemisphere – the left part, around the Ascendant – is linked to your ego and your willpower, whereas the Western hemisphere indicates how other people influence you, and how flexible you are when you make a decision.

Your Four Quadrants

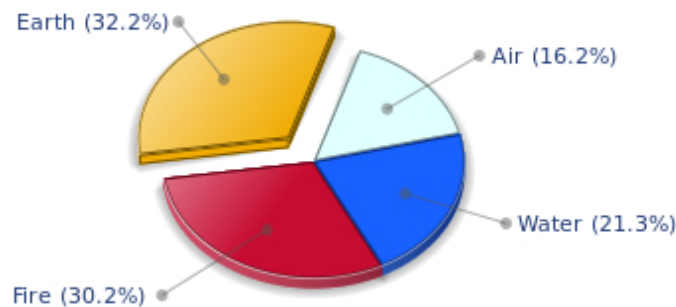


John McCain, the diurnal South-western quadrant, consisting of the 7th, 8th and 9th houses, prevails in your chart: this sector brings about a thirst for communication and sometimes a need to take risks in your dealings with others. Relations are a factor of your evolution and your transformation, which you accept serenely. Indeed, what matters to you is the movement and the energy that link you to others and that make you gain more awareness. A kind of rebellion or a desire to get away from it all is rooted in you.

Your Dominant Modes and Elements

John McCain, here are the graphs of your Elements and Modes, based on planets' position and angles in the twelve signs:

Your Four Elements

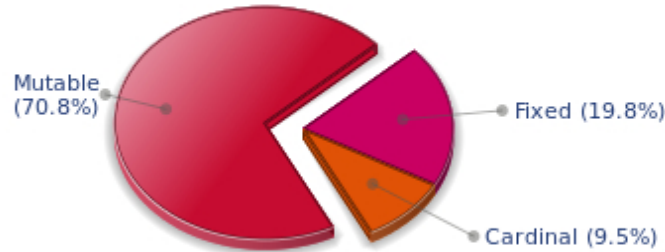


Like the majority of Earth signs, John McCain, you are efficient, concrete and not too emotional. What matters to you is what you see: you judge the tree by its fruits. Your ideas keep changing, words disappear, but actions and their consequences are visible and remain. Express your sensitivity, even if it means revealing your vulnerability. Emotions, energy and communication must not be neglected; concrete action is meaningless if it is not justified by your heart, your intellect or your enthusiasm.

John McCain, Fire is dominant in your natal chart and endows you with intuition, energy, courage, self-confidence, and enthusiasm! You are inclined to be passionate, you assert your willpower, you move forward, and come hell or high water, you achieve your dreams and your goals. The relative weakness of this element is the difficulty to step back or a kind of boldness that may prompt you to do foolish things.

The twelve zodiacal signs are split up into three groups or modes, called quadruplicities, a learned word meaning only that these three groups include four signs. The Cardinal, Fixed and Mutable modes are more or less represented in your natal chart, depending on planets' positions and importance, and on angles in the twelve signs.

Your Modes



The Mutable mode is the most emphasized one in your natal chart, John McCain, which indicates a mobile character that is curious and thirsty for new experiences and evolution. You are lively and flexible, and you like to react quickly to solicitations, but don't confuse mobility with agitation, since this is the danger with this configuration - and with you, stagnation is out of the question. Security doesn't matter as long as you are not bored. You optimize, you change things, you change yourself... all this in a speedy way.

Your Dominants: Planets, Signs and Houses

The issue of dominant planets has existed since the mists of time in astrology: how nice it would be if a person could be described with a few words and one or several planets that would represent their character, without having to analyse such elements as rulerships, angularities, houses, etc!

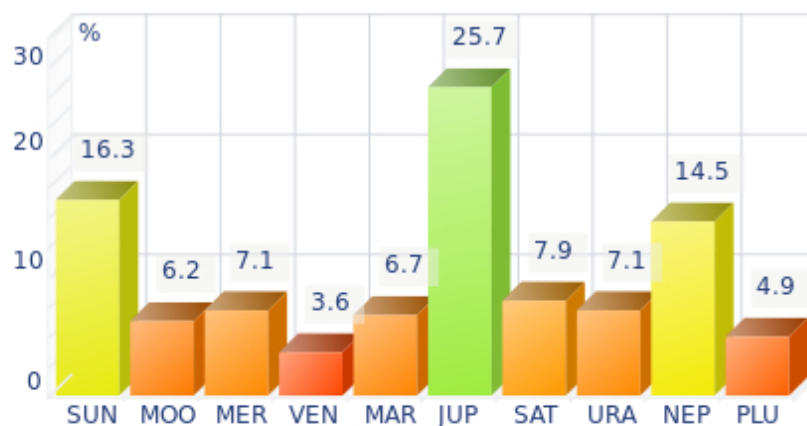
The ten planets - the Sun throughout Pluto - are a bit like ten characters in a role-play, each one has its own personality, its own way of acting, its own strengths and weaknesses. They actually represent a classification into ten distinct personalities, and astrologers have always tried to associate one or several dominant planets to a natal chart as well as dominant signs and houses.

Indeed, it is quite the same situation with signs and houses. If planets symbolize characters, signs represent hues - the mental, emotional and physical structures of an individual. The sign in which a planet is posited is like a character whose features are modified according to the place where he lives. In a chart, there are usually one, two or three highlighted signs that allow to rapidly describe its owner.

Regarding astrological houses, the principle is even simpler: the twelve houses correspond to twelve fields of life, and planets tenanted any given house increase that house's importance and highlight all relevant life departments: it may be marriage, work, friendship etc.

John McCain, here is the evaluation diagramme for your planets:

Your Dominant Planets



The three planets that are most highlighted in your chart are Jupiter, the Sun and Neptune.

Jupiter, the planet of expansion, organization, power and benevolence, is quite emphasized in your chart. Like any Jupiterian, you are warm, open, sociable, consensual, active and optimistic. You can use your self-confidence to erase differences of opinion, and you leave the task of analyzing and perfecting things to specialists. Your role, and you know it since you were young, is to gather, to demonstrate your synthesizing and conciliatory mind, and to naturally reap its fruits - power.

You appreciate legality, social order but also order in general. With you as a leader, every plan or human entity can be organized and structured. You excel at supervising. The Jupiterian type is indeed the politician par excellence, and a positive Jupiter in your chart is synonymous with good integration into society, whatever the chosen path.

Is this idyllic picture really perfect? Certainly not: each planet's typology has its own weaknesses. One of yours is pride, like the Solarian, but your will of expansion at all costs may generate a form of exaggeration in everything, endless pleasure, inappropriate self-confidence that could lead you to rough materialism and the thirst for absurd material comfort - in the worst cases, of course.

One of the dominant planets in your natal chart is the Sun. He symbolizes will, magnetism, sense of honour and dignity. You are a Solar being, and you often display charismatic and leadership qualities. Your warmth and your persuasive power lead you far away from pettiness. You enjoy thinking big and, consequently, you move forward according to what you decide.

Your Solarian weakness may be related to the sin of pride or to excessive authority. The frontier between pride and vanity is tenuous: be careful not to overstep it and to keep the nobleness of heart that is part of your charm.

With Neptune as one of your three dominant planets, you are a secretive and ambiguous person, often confused or unclear about your own motivations! Indeed, you are endowed with unlimited imagination and inspiration, as well as with an extreme sensibility that may turn you into a psychic or a clairvoyant. On the other hand, your impressionability is such that you may have difficulties in separating what is concrete and solid from illusions or dreams.

A mystic, a visionary or a poet, you daydream, like any Neptunian, and you see what few people only can see, all of this being shrouded in aesthetic mists when you are fired with enthusiasm.

A boundless, infinity-loving man like you is inevitably likely to be more vulnerable and easily hurt because of your acute perception of events. In such cases, you are hit full in the face, and you may sink into gloomy daydreamings and dark melancholy.

That said, this mysterious aura definitely gives you an indefinable charm in the eyes of your close friends who are often fascinated by your unique ability to feel and to see what ordinary people can never see!



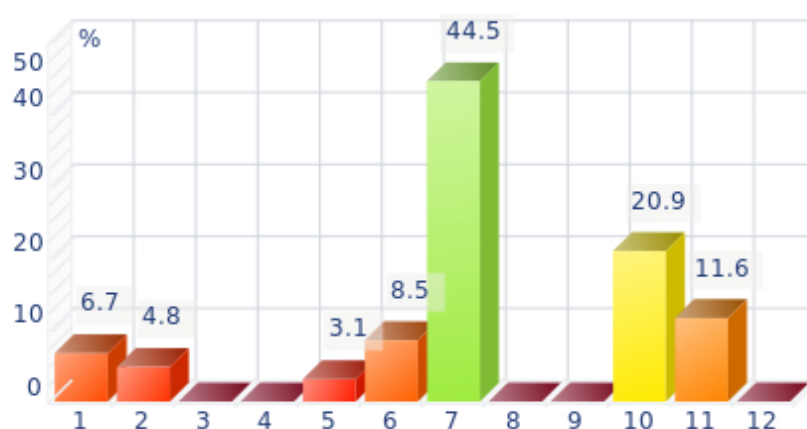
In your natal chart, the three most important signs, delineated according to the above-mentioned criteria, are, in decreasing order of strength, Virgo, Sagittarius and Pisces. They are often prominent because your Ascendant and your Sun are posited there. However, it is not always the case: it may be because they are occupied by a cluster of planets, by a planet near an angle other than the Midheaven and the Ascendant, or because two or three planets are very active and form numerous aspects from these signs. Therefore, you partly take on the three signs' characteristics, which are somehow superimposed on your natal chart, and all the more so if any of the signs in question is highlighted.

Virgo, associated with perfectionism, numbers and reason, is among your dominant signs: you inherit its sense of responsibility and tidiness, a clear mind, an unfailing logic, as well as a need to be useful and to fulfil your task to the best of your abilities. Obviously, people may think that you are too modest or reserved, suspicious or pessimistic because of your exceedingly critical mind, but aren't logic and wisdom great qualities? Of course, they are. Moreover, you keep your feet on the ground, you never behave irrationally and you are helpful and hardworking - what more can you ask for?!

Sagittarius, an adventurous and conquering fire sign, is dominant in your chart: you are enthusiastic, enterprising, optimistic, very sociable, and mobile - you have itchy feet, both physically and mentally. Nobody gets bored with you because you are always planning things and suggesting excursions, at least... when you are around and not already gone on a trip! Obviously, so many movements for one man may scare people off, and some of them may even criticize your brutality or your tendency to lose your temper, but you are so warm and genuine, so expansive, isn't this a good thing? And all the more so, since your sense of humour is overwhelming...

Pisces is among your dominant signs and endows your personality with unlimited sources of emotions, dreams, imagination, and sensitivity, to the extent that you literally swim in a cloudy ocean of delightful impressions. These impressions are so intense and overwhelming that you don't really need to take action concretely, to show your dynamism or your willpower, since you already live so intensely with your feelings - you are as keen as a radar, always on the alert! That is why some people may not like your carelessness, and the lack of clarity in your opinions or actions; however they quickly notice your artistic talents, your poetic or artistic side, and your total lack of wickedness. Besides, you feel compassion for people in pain - empathy is one of your great qualities. Thanks to your flexibility, your intuition, and your generosity, you may spend an important part of your life helping others. And if you are creative or if you have well-known artistic talents, everybody will forgive your little flaws: absent-mindedness, lack of energy or of will, too dreamy temperament...

Your Dominant Houses



Houses 7, 10 and 11 are the most tenanted ones in your natal chart. To compute their strength, planets and angles are weighed according to various astrological criteria such as swiftness, activity, angularity, rulership etc. From the analysis of the most tenanted Houses, the Astrologer deduces the fields of activity that are most relevant to you, be it because of what you are experiencing, or what you may experience in the future, or because of your deep inner motivations.

Your 7th house is one of your dominant houses: it symbolizes other people, marriages, associations, contracts, and partnerships. Your personal achievement and maybe your problems - depending on the rest of your chart - are mainly influenced by your rapports with others, the area in which you tend to commit yourself a lot. You appreciate communication, and you give importance to others' opinions. Success requires the support of others, which seems obvious and natural to you. Your marriage generally contributes to your fulfilment.

With a prominent 10th house, your destiny's achievement may be very notable: the 10th house represents your career, your public life, and your ambitions. A good deal of your energy may thus be used to successfully implement what you have in mind. Instinctively, you are very keen to make your dreams come true. Sooner or later, you will deal with the public, and your personal achievement will go through trials and ordeals: other people and visible actions.

The 11th house is among your dominant houses. Therefore, social life and friendships are very important, even strategic to you.

You think that group activities, whether in the humanitarian field or simple gatherings of friends, are endless sources of inspiration and of enjoyment, provided that there are no tensed aspects in this sector. Everything human is important to you, often more important than your own success, unless your 10th house is also powerful.

Your Style, Behaviour, and Peculiarities

What is commonly known as "sign" indicates the position of the Sun in the Zodiac. The Sun highlights all the characteristics of the sign he tenants. According to astrology traditional rules, these characteristics are all the more pure and exact when the Sun is strong in the sign, or when the sign is particularly highlighted within the chart. Here, we indicate the pure characteristics of the sign but you must bear in mind that they may only shed a light on a particular aspect of your personality. Indeed, the sole sign of the Sun, or of the Ascendant, can never describe an astrological chart because it depends on the degree of strength of the said sign in your chart.

Another important point must be underlined. Contrary to the Ascendant, which clearly describes your appearance, your vitality, your physical constitution, your spontaneous behaviour and the image you project, your Sun sign describes your inner self, which you may not completely be aware of, and which may emerge gradually as you mature: it is about your inner personality that you reveal only to the members of your entourage whom you trust. The Sun sign is likely to be the final form of your personality, once it has evolved in line with the energies of the other parts of your chart, the beginning of which is seen in the Ascendant, your external "bark".

The Ascendant is one of the major components of your natal chart. It is the zodiacal sign that rises in the East at the very moment of your birth. To calculate it, it is therefore necessary to know your exact time of birth.

It provides with a wealth of information on your personality. It is one of the key features that allows the analysis of several parts of you, such as your appearance, your character as it is initially perceived and your immediate behaviour. It describes the external aspect of your personality which you always display, but it also describes your physical constitution in the long-term, in other words, your health.

Please be aware that, in spite of the importance of the Ascendant, the accuracy of its description depends on how strongly highlighted it is in your natal chart. We use the entire set of astrological rules to assess the strength of the Ascendant. In most cases, the Ascendant is as revealing as your "sign", i.e., the sign where the Sun is posited at the time of birth.

You were born under the sign of Virgo and your Ascendant is in Pisces

Before broaching the details of the meaning of your Sun and your Ascendant, as a preamble, we offer a brief generic interpretation of their combination in your chart:

Your Sun sign and your Ascendant sign are opposite but complementary. Flexibility, abnegation, and modesty are their common traits. You are definitely selfless, and you have no intention to participate in the race for honours which seems so meaningless to you. Owing to your Pisces Ascendant, you come across as ambivalent, and people find your benevolence and your generosity quite bewitching. You sometimes let yourself be tempted by opportunism because you are exhilarated by your capacity to merge with the most different personalities. This is Pisces' formidable asset! Nevertheless, your inner self, defined by Virgo, urges you to remain careful and on the alert, and therefore, you closely guard your tranquillity and your daily pace, which is as organised as a music sheet. You are more rational and maniac than what you appear to be at first glance, and you admit in your private sphere only trustworthy

people who are unlikely to upset your lifestyle. One should not be fooled by your apparent indifference because you are eagle-eyed and you never miss a weak spot on the armour!

You were born with the Sun in Virgo

Psychologically speaking, your nature is nervous and secondary. Before you take action, you cautiously ponder over things and you review any possible alternative and reaction. You strive systematically to find the best possible response to any given problem. You are a perfectionist above all and you have no rest until you optimize a situation, in each and every area, be it professional, pragmatic, aesthetic or in pleasure. You do not accept spontaneity and, to fully enjoy life and go further, you consider that demanding the best is the least you can do, even though it is detrimental to the rough force associated with your instinct. The intellectual element intervenes before both the physical ones and your feelings: it is one of the essential clues to understanding your personality.

As you are born under this sign, you are cerebral, clear-sighted, focused on details and on numbers, analytic, serious, competent, reasonable, modest, tidy, organized, spruce, industrious, provident, honest, loyal, reserved, shy, helpful, willing to progress, talkative, perfectionist, logical, hardworking, tactful, patient, precise, concrete, spiritual. You can also be narrow-minded, calculating, irritating, petty, pernickety, hung up, anxious, cold, repressed or sarcastic.

In love, Sir, your inner self is different from what you seem to be: you are sensual and affectionate and you find it hard to show it because your nature is to be cautious, reserved and analytical. You think too much, which gives you a cold and distant look. However, it is a mask that you wear and take around with you. As soon as you feel in confidence, you become able to take off the mask and to reveal your true face. You are critical and perfectionist and you must be cautious enough to keep your comments to yourself, especially in this particular area.

In the fields of sex and affection, real confidence is an imperative pre-requisite. Otherwise, it is impossible for you to show your true self and to remove the mental screen that proves so efficient in other areas, but that is very burdensome and inhibiting in the private sphere.

When you manage to do so, you become a charming, sensual and endearing partner and you communicate easily thanks to Mercury who rules your sign.

You are loyal, organized, conformist, more suited for celibacy. But once you take your decision, you are quiet and tidy and you will bring up your children according to the best traditional principles.

Because Virgo is a dual sign, there may be two marriages, or there may be a love affair in parallel.

Your Ascendant is in Pisces

Psychologically speaking, your nature is adaptable and receptive, exactly the opposite of the sign of Virgo whose very essence is to analyze every detail, thus creating a definite duality between the self and the outside world: conversely, Pisces absorbs and erases all forms of differentiation they face. With Pisces, there is no opposition, no conflict and no individual reaction. There is only fusion, non-separation, a perpetual and mobile spreading of the self over some blurred and huge sensation of sympathy with the environment. It is the absolute reign of feelings and emotions over the intellect and its separative logics.

As you are born under this sign, you are emotional, sensitive, dedicated, adaptable, nice, wild, compassionate, romantic, imaginative, flexible, opportunist, intuitive, impossible to categorized, irrational, seductive, placid, secretive, introverted, pleasant, artistic, and charming. But you may also be indecisive, moody, passive, confused, wavering, lazy, scatterbrained, vulnerable, unpredictable and gullible.

In love, Sir, you are the very type of the sentimental romantic in the highest meaning of the term. You live your love affairs in your mind. You upkeep the web of your endless daydreamings just to exacerbate your emotions and your feelings, over and over again.

You fall in love frequently and according to how your encounters develop. You adjust to the person you set your heart on and you may harbour illusions because your imagination and your capacity to intensely live a virtual life are very strong. You are utopian and you are so gentle that you usually achieve your aims in spite of your boundless passivity: you seldom take the first step, except when you are thrown a line, which is as big as a tree trunk...

You live for love and through love. Your only weakness may be your lack of determination at the early stage of a relationship. However, once you get started, if there is any compatibility, you trap your prey with your overflowing affectivity and your unlimited sensuality.

Pisces' waters are shifting and changeable. When other opportunities appeal to you, you are able to handle two relationships simultaneously. You achieve an alternate osmosis with your partners and you see no harm in doing so, because you live the instant with plasticity and in communion.

You loathe solitude and you prefer to be caught in the nets of a woman even though she does not match your personality. If, by lack of chance, your partner belongs to the domineering and unscrupulous type, you may be trapped and wake up bitter and disappointed that you extended for too long the illusion of a marvellous story.

Once you find your soul mate, your home is usually harmonious. In your couple, love is immense, even mystical. Like a wave, it bathes the shores of your emotions, which range from the noblest feelings to the wildest physical passions. Since you merely live in concrete life, it is necessary that your partner be well grounded, so that your home is well up kept and your children are properly reared!

The ruler of your chart is in Virgo

The ruler of the Ascendant, also referred to as the chart ruler, brings a few interesting nuances to the meanings provided by the Sun and the Ascendant. The sign in which the ruler of the Ascendant is posited fine-tunes the style of personality described by the Sun and the Ascendant. It may strengthen it if the sign is identical to either of them.

The ruler of your Ascendant is in the same sign as your Sun. This specific feature means that the Sun's characteristics in sign previously delineated are strengthened.

Aspects to your Ascendant

Several planets form an aspect with your Ascendant, John McCain. Therefore, in their specific way, they modify your behaviour and your personality, which do not take on the pure characteristics of your Pisces Ascendant only, but which are a blend of its characteristics with those of the said aspects.

★★★★★ Sun opposite Ascendant, orb -0° 24'

The opposition of the Sun to your Ascendant cannot be really interpreted as a dissonance, John McCain, but rather as a conjunction with your Descendant, or DS, the angle symbolising "other people". Thus, although your capacities for self-assertion, decision-making and shining may not entirely match your natural demeanour as an isolated individual, they can be wonderfully expressed through unions and associations. Indeed, there is a discrepancy between the Self and your behaviour. It is obvious that this aspect slightly tones down magnetism and strength, but at the same time, it puts you at the service of other people in a way that neither alters your personal value, nor puts you in tricky situations.

★★★★★ Uranus sextile Ascendant, orb 3° 3'

Uranus is in soft aspect with your Ascendant, John McCain. Although your behaviour is original, nonconformist, and free, it is not unpleasant. On the contrary, this facet of your personality is sometimes considered by other people as endearing and unpredictable, in the good sense of the word. One never gets bored in your company because you are often found where you are not expected, whether regarding your ideas, your lifestyle or the way you react. You possess the charm independent and free persons are endowed with!

Your Sensitivity

Your sensitivity is devoid of infatuation or carelessness, John McCain; you belong to the cerebral type and, due to your needs for inner security and for freedom, you consider feelings and emotions as burdens. You are apparently phlegmatic and almost detached. However, your swift reactivity and your fertile imagination make you appreciate friendly gatherings with numerous and varied exchanges. You do not wear your heart on your sleeve. At first, you seem cold but those who know you are aware of your very original and unique sense of humour. Your receptiveness is remarkable. Your observation talents and your detachment work wonders in the defence of your anti-conformist and rebellious ideas. Your stubbornness is obvious and it is very difficult to make you change your mind because you are affectively too vulnerable: it would require lengthy and thorough argumentations aiming at your intellect...

You are popular with your friends, John McCain. You easily shine, thanks to your sensitivity, your whimsical side, your mobility and your charm tinged with imagination. Even at work, you often win your clientele's favours, and if by chance, you are in a commercial team, you are chosen and sent ahead to deal with customers because you are so likeable!

You can happily express your emotions through shared projects - with your friends, preferably - in which you shine with selflessness and your childlike but endearing charm.

★★★★★ Moon opposite Pluto, orb -4° 23'

This planetary configuration causes distrust (Plutonian distance) towards individuals, groups, or your own family environment (lunar values). It may bring about a feeling of affective or relational wound. The feeling of security is absent, or fragmented or illusive. How is it possible to feel integrated whereas you know that you are different and on your own? It is the myth of the « ugly duckling », with its different specific characteristics, an alien to its origins and its roots. It is important that you accept your differences and that you have them accepted by others, without forsaking your essential values. This is how you can exercise your group ownership without allowing them to exclude you or to repress your secret determinations. When this aspect is well integrated, it is a factor of lucidity for your emotions. You perceive without gullibility what is really at stake in your intimate relationships and the flaws of your environment. The fact that you do not readily trust people spares you many traps and delusions.

★★★★★ Moon sesqui-quadrate Neptune, orb 1° 17'

This Moon-Neptune dissonance wonderfully turns on the poetic soul, the exhilaration of feelings and dreams... and disturbs your practical life, as well as the management of contingencies. You do not lack inspiration but your reasons of living may be beyond your entourage's understanding! Bohemian life is pleasant but it is probable that you experience muddled situations. Your aims are noble and your intentions are very good. But you may not have the will to turn them into reality. It is important that you are wary of artificial paradises: escaping in the imaginary is not necessarily the best solution for problem solving. You are in search of an inaccessible tranquillity and you tend to procrastinate chores. Nevertheless, facts remain present and you may see that non-interventionism can only increase your difficulties. You must put an end to this vicious let-go circle. This does not imply that you have to forsake your dreams or to repress your very rich sensitivity.

★★★★★ Moon square Uranus, orb 7° 05'

The Moon and Uranus intrinsically share little in common: they get along as well as fire and water! It is difficult for you to reconcile your desire for well being and intimacy with your destiny's dazzling passions and thunderbolts. You may feel that your intimate and family realm hampers your freedom. There is a

potential for crises, explosions or splits. The desire for independence does not get on well with security concerns. There may be strong temptations endangering your very life foundations and you may embark upon a liberating and personal adventure. However, you fear rash decisions. Your need for security may temper your impulses and put a brake on your individualistic aspirations. To harmonize these tendencies within your intimate life, you must leave yourself enough room for personal expression or for an activity of your own. Otherwise, as days go by, built-up tensions may jeopardize the quiet course of your life.

★★★★★ Moon opposite Mars, orb -10° 09'

The Moon-Mars dissonance suggests touchiness and sometimes, aggressiveness. You are irascible and very sensitive to all sorts of threats and dangers. You react very quickly, too hastily. To protect your well being, you must learn to control your mood, to coordinate your actions and to balance your opinions. You are often disturbed by plain facts: Either you seek refuge in your intimate realm and refuse to face the truth or, on the contrary, you are engaged in altercations, which forbid all tranquillity. It is important that you balance these two tendencies and that you alternate moments of action with phases of carelessness and relaxation. These two attitudes are relatively irreconcilable.

Your Affectivity

In your chart, the Sun and Venus are both in Virgo. With this double membership of Virgo, your affectivity is clearly selective. More than others, you need to control your affectivity and the relationship you are involved in. You sort out, you select, you observe, relentlessly, to the extent that you place yourself and your partner in a pattern where your respective role, function and *raison d'être* are specified. Therefore, it is useless to peddle the virtues of a current, the benefits of a fashionable way to love or of trendy attitudes. You remain faithful to... your principles. You prefer clarity of relationships to passionate tumults. This is probably the reason why you are credited with modesty and reserve. It is not that your affectivity is withdrawn – on the contrary, you are sensitive because you are vulnerable. However, you are distrustful of impulses that may gratuitously destabilize your relationship. You are more reliable than you are demonstrative, more loyal than exuberant, you fully express yourself within a couple based on the principle of complementarity: your partner's naturalness and spontaneity nurture your affectivity, whereas your reliability and your sense of moderation efficiently protect your couple against life's vagaries. Although it is theoretical, this pattern allows the emergence of amorous behaviours that are, by nature, too discreet or too timid.

John McCain, inside yourself, feelings are strong and powerful. However, you never show them before weighing up and considering all the possible consequences of your words and your actions: fieriness and spontaneousness are toned down because you cannot help controlling yourself, probably due to your modesty, your discretion or your shyness; you are frightened because you are so concerned with other people's opinion that you see passion, or expressing your feelings too quickly, as sources of danger. However, you are helpful, simple, and you do not fuss around. Reason prevails in your love life but your heart may flare up when the context is well organized and everyday life is cautiously handled with good sense, tidiness and cleanliness. Your sensitivity prompts you to avoid excesses and outbursts and this is how you think that you can achieve happiness without risk.

John McCain, your warmth and your attractiveness are at the service of your future or current marriage! In the 7th house, Venus colours the expression of your feelings with commitment, a request for reciprocation and for something concrete. Venus gives way, to a great extent, to your desire to be loved

as much as to love: in the romantic field, your entire being aims at harmony, diplomacy, mind-openness so as to find, at any cost, a common ground where you can achieve your aim, that is to say a sweet idyll and, why not if it is possible, a nice marriage as an ending. Are problems arising? A disagreement? A lack of understanding? Immediately, you undertake to soothe your partner and to highlight what brings you together, while skilfully omitting anything that might harm the so much sought after harmony. Of course, this merely complacent attitude seems to allow you to progress with conviction towards your goals but there is a price to be paid. The dependency upon your couple becomes tangible. Paradoxically, anyway, you care little about that because it is just the way you are and that, worst comes to worst, you prefer to continue this constant game consisting in a kind of self-sacrifice with its fruitful benefits, rather than to push yourself to the forefront and to take the risk of being less attractive... Actually, you are never happier than when you formalize your union and there is no doubt that, once you are married, you will be a charming spouse and you will strive to make your conjugal life a pleasant one in a spirit of sharing and warmth.

★★★★★ Venus opposite Saturn, orb -3° 1'

This Venus-Saturn dissonance indicates a demanding, complex and often challenged affectivity. You are wondering about the meanings of love, pleasure and emotions. Your passions take an absolute character right away. No compromise, no sham must stain your sentimental life. In such a context, doubts abound. This aspect prompts you to review the roots of your affectivity, so as to find the assurance you lack and to soothe your dormant sentimental anxiety. Love is an eternal and endless quest. Because you are doubtful of the affection people have for you, you may never feel that you are really loved. Your affective behaviour reveals your uncertainties: tests and challenges follow one another until, eventually, you are certain to experience a love that meets your demands. It is obvious that on the sentimental area, you are not looking for the easy way out.

★★★★★ Venus conjunction Neptune, orb 7° 09'

Your sentimental life unfolds like a strange dream. Love is too delicate to be tamed or controlled. You follow your heart impulses in an idyllic ambiance, far from reality's ordinary constraints, far from conventions and conformism. You exude a particular charm, discreet and subtle. But your affectivity may be disconcerting. You are very sensitive to marks of affection and tenderness, although you are aware that love cannot be bought or won. What is meant to be will be and it is impossible to know the hows and the whys behind a prevailing harmony. The obvious danger is that you may refuse to make any effort in such conditions. Living as a couple must feel natural and you do not need to objectively build the foundations of a relationship. You are an idealist and you dream of an affective paradise, which may be too good to be true...

★★★★★ Venus sextile Pluto, orb -4° 43'

You exercise exceptional clear-sightedness in love. Your passions are subtle, deep, although disconcerting and imperceptible to the outsider. You display no gullibility and you keep your distance. This is part of your charm. You detect what is really at stake in your couple's relationship and in your sentimental attitude. You drive the boat of your sensitivity without falling victim to mirages and affective traps. The only danger is that you may be too calculating. As you try to totally control love and to constantly pull the strings, you may lose the ingenuity and innocence which are necessary to nurture a relationship. You give proofs of your love in a very personal way and you never hesitate to use paradoxes to preserve the authenticity of your relations. You can anticipate problems and prevent difficulties.

★★★★★ Venus sesqui-quadrature Uranus, orb -1° 12'

Your sentimental life is adventurous: you prefer Bohemia to the comfort of a quiet but shaky love affair. You are a hard-liner and you think that love should be genuine or it should not be at all! You have difficulties in resisting your heart impulses and untimely passions that may challenge your affectivity. You need air, freedom and a relative independence. You also need to fully experience your love impulses, regardless of the price to be paid. The heart has its own reasons that no rules can hamper... The obvious danger may be to cause dramatic hurly-burly. Your inflexibility on the affective plane does not favour a quiet life where « one makes do with very little ». You are the all or nothing type. But does the absolute really belong to our world?

★★★★★ Mercury conjunction Venus, orb 9° 26'

This aspect sensitizes you to games of seduction. You like to multiply romantic undertakings, you invent new reasons to seduce or to be seduced. Although your romantic life is not a model of stability, it is full of discoveries, varied emotions, both sensual and cerebral. You know how to earn your entourage's liking through your acute sensitivity. You play around with feelings, with relationships and with love... Mercury and Venus commonly share the capacity to sensitize to human topics. Your receptivity towards others is high. Your broad-mindedness goes hand in hand with your heart's generosity. You pay particular attention to the way people look at you and the effect you make when you meet or exchange with someone. Actually, you expect a lot from others: acknowledgement of your qualities, as well as esteem and consideration. You may also be touchy beyond what you may give to think. In many instances, relationship games may turn out to be more serious than expected.

The Way You Take Action and Your Sexuality

What an energy, John McCain! You take so many initiatives, you have so much strength for action, construction and struggle! You are part of the conquerors, loyal and concerned about panache. Your vitality is such that you can achieve your objectives and release all your creativity. However, you are so proud and so unyielding that you cannot tolerate the faintest annoyance on your way: if you are vexed, you may turn into the opposite direction as a matter of reaction. Sexually, your magnetism and your energy work wonders. You are not complicated and, as long as your slightly domineering nature is respected and you are granted due admiration, all goes perfectly well. You usually have a lot of self-confidence and you believe in you. This characteristic feature may turn you into a hero with Hercules's strength and solar charisma.

It is in the area of your work environment that you are most active and pugnacious, John McCain. Or in your daily life, if you do not work.

You are a hard-worker, completely dedicated to the service of others: being helpful and efficient is your battle horse. Indeed, it is so obvious! Ask the opinion of your colleagues or your entourage... Your efficiency is not to be proved. You get things moving, you progress, you are very keen to improve yourself, and your boss can only rejoice that his staff contributes so actively.

The areas of health and pets are traditionally favoured by this planetary configuration. However, do check your Mars' aspects if you intend to be a tamer!

In any case, the daily work sphere is the area where you can deliver to the best of your abilities, in terms

of action. The only reservation may be not to overdo.

★★★★★ Mars trine Jupiter, orb 2° 32'

Coordinated action wins over almost all obstacles! You mobilize your energy and your fighting spirit advisedly and you take timely action. This is the reason why you are efficient in situations requiring courage, determination, swift responses and diplomacy, altogether. You do not fear confrontations but you never provoke them unnecessarily. You take advantage of your chances and you adjust your behaviour to concrete situations. You empirically handle events with relevance. The only danger is that you may be overzealous to seize any opportunity... even those that are not necessarily good in the long run. You should take the time to carefully consider the facts and their consequences. The swiftness of your reactions must remain an asset.

★★★☆☆ Mars square Uranus, orb 3° 03'

This Uranus-Mars dissonance indicates frequent commotions. Your actions may be foolhardy and thoughtless. You may not control your temper and you let impulsiveness take over logics. This brings about drastic, whimsical or untimely decisions. There is no monotony in your life: thunders and tyrannical behaviour are on the agenda! Your fighting spirit certainly allows you to cope with life hardships. Nevertheless, beware of damages. As one wants to act as a hero, one can make mistakes. Because forces are overestimated or because inflexibility forbids compromise solutions. Therefore, it is important to balance your decisions and to avoid solutions that are as final as inappropriate.

Your Intellect and Your Communication Style

Your thought process is rather slow because you need time and tranquillity to review everyone's ideas and opinions, to weigh the pros and the cons and to eventually take the most equitable decision. You reject all fanatical and extremist behaviours and you are always in search of the happy medium. Your tolerance, your sense of logic and your negotiating skills are acknowledged but your indecisiveness and your propensity to procrastinate are often criticized. Therefore, you may need to be encouraged and to be nudged into action, in order to offset your fatalistic attitude that may be likened to laziness. Do not seek other people's approval so constantly, express yourself more and take action...

Communication is your forte, John McCain: you will use your entire intelligence efficiently in order to achieve agreements, compromises, or contracts. You are a born negotiator, or at least, that's what you try to be because you are not mentally self-centred and your thoughts are more aimed at others rather than at yourself.

With this thinking process, you may be dependent on others and somehow, too adaptable... Flexible, chatty, and outgoing when you communicate, you lose in charisma and in convincing power what you gain in quick, efficient, but sometimes light, compromise. Matters related to marriage are sometimes dealt with thoughtlessly but cleverly.

★★★★★ Moon trine Mercury, orb -0° 19'

Curiosity is part of your nature. You perceive everything with sharp acuity. You increase your attempts to establish connections and to exchange opinions and information, particularly when you are in a familiar and intimate context. When this configuration is well integrated, it underlines the multi-faceted nature of the mobility that defines your behaviour and your living conditions and endows you with strong

adaptation abilities. You also show a remarkable gift for improvisation and you pick up the quality of the atmosphere so swiftly that you get off any tricky situations. However, you must keep your adaptation capacity under control because when it is overdeveloped, it may become an agent for instability.

★★★★★ Mercury sextile Pluto, orb 4° 42'

Gullibility does not belong to the collection of your faults! You have a good grasp of human mechanisms and you easily detect flaws, calculations and hidden motivations. Human relations are subtle, never black or white, always complex. You often speak in riddles or in negations and you prefer to use the ambiguous language of symbols rather than the simplistic clarity of words. In this way, you fuel your mystery. On the relationship plane, your strength lies in the delicate art of highlighting flaws, detecting what destabilizes the enemy or, on the contrary, identifying what is relevant to your friends. You are more interested in what is concealed than in what is openly said. More often than not, you exercise an indisputable clear-sightedness.

★★★★★ Mercury quintile Jupiter, orb 0° 22'

You display strong abilities for adaptation, social insertion and various learning capacities. You are credited with an acute sense of relations, probably because you can speak other people's language. You easily assimilate the most varied settings and your qualities are acknowledged. Your attitude and the words you use have the power to seduce and to convince your entourage. Diplomacy is an asset in your game. You are fit for negotiation and you seek compromise solutions. The only danger may be that sometimes, you too readily accept agreements that turn out to be less positive than foreseen, after a while. This is the other side of the coin for your exceptional flexibility and your unquestionable tact.

★★★★★ Mercury bi-quintile Uranus, orb -0° 46'

Your state of mind is innovative and turns the surrounding world into a constantly moving field of experiences. You ask relevant questions ... and you answer them. Although you are flexible when you ought to, your principles and your beliefs are unwavering. It seems difficult to catch you off your guard. You multiply observations, relationships, contacts and you never lose face: actually, your mobility hides an unshakable determination and a deep lucidity. In a split second, you are able to catch the useful information or the enriching relationship. The original and fanciful steps you take exclude monotony. Your approach to life is amazing!

Your Goals, Motivations, Career, and Destiny

Your Sun is posited in the 7th House

To assert yourself, John McCain, you cannot rest until you multiply your contacts. Although you do not consciously understand your ambition early in life, you need to shine through your relationships.

It may take the form of a tendency to rapidly get involved in associations, groups or clubs; you feel fine as soon as people are around you because your communication skills are always highlighted and appreciated; your style is not what matters most because your main concern is to be noticed as soon as you are in contact with the world.

You are meant for marriage, the ultimate form of association. Usually, your destiny is dependent on your marriage, either directly through its consequences on your career and your lifestyle, or indirectly and, in

the long run, through the supports and help you may gain, particularly owing to your honesty and your assertive skills. Marriage constitutes the apotheosis of your ambitions. As you unconsciously understand it, your entire will strives to achieve this aim since your adolescence. You have the required flexibility and talent to turn the life of your couple into daily harmony.

This area is only one of the facets of the fields where you positively exercise your will but... you do so with so much strength and talent!

With this configuration, everything seems all roses. However, it is not as simple and easy as it may look: your will to shine through others and your almost frantic search for contact may hide a fear of solitude and a lack of self-confidence. Why would you constantly seek confirmation of your own worth into other people's eyes if it were not to dispel your own doubts?

You are easily influenced and your apprehension about loneliness and not being up to it may cause troubles and out-of-proportion reactions; struggles, conflicts of authority or even lawsuits may be harmful. You often get over them because your determination to show that you are at your best is stronger than anything else.

Your challenge is to manage to please others and to conceal your domineering and too assertive side: however, do not make too much effort because, in all cases, you will be equally appreciated. Remember that it's better to let well alone!

The ruler of your chart is in the 7th House

The ruler of the Ascendant, also referred to as the chart ruler as explained in a previous chapter, is also posited in one of the twelve Houses of the chart. Just like the Sun in his House, the ruler of the Ascendant provides certain abilities, or it makes you appreciate more keenly certain areas of life.

The ruler of your Ascendant is in the same House as your Sun. This specific feature of your chart strengthens the Sun's characteristics previously delineated.

Aspects influencing your ambitions

Regarding your destiny or your career, the following aspects of your natal chart allow to fine-tune what has just been said above:

★★★★☆ Jupiter conjunction Midheaven, orb 4° 11'

Jupiter, the most beneficial planet of the Zodiac, is in conjunction with your Midheaven, your destiny, John McCain. It is undeniably an auspicious configuration which favours your social ascent or your professional destiny, which are often influenced by your respect for the law, and your natural self-confidence. These qualities remove pitfalls out of your way. With this very nice configuration, your profession or your destiny may also be linked to values symbolised by Jupiter: prominent political figure, medical doctor, businessman, judge, solicitor, or any respectable occupation.

★★★★☆ Mars trine Midheaven, orb -1° 39'

Your energy serves your professional goals and your social ascent in general, John McCain. This beneficial aspect of Mars to your Midheaven endows you with strong dynamism, and it rewards your sustained and efficient efforts. You enjoy taking action, and your results are gratifying most of the time.

★★★★★ Sun trine Uranus, orb -3° 05'

This aspect reinforces the determination as well as the will to further your original, sometimes revolutionary, ideas and designs. Your capacity of innovation is important for your image. You have the soul of a leader. You display a forceful and synthesizing mind. You may tend to oversimplify or to schematize situations. In most cases, you know where you are heading to and how to reach your goals. Your determination is two-edged... not everybody will appreciate your contrasted standpoints. It is yes or no, black or white! This planetary configuration indicates certainties. When it comes to acting according to your inner motivations and to respecting your models, you can show an unusual willpower and sweep aside all obstacles lying on your path.

★★★★★ Sun square Midheaven, orb 4° 3'

What you really want to do, or the way you consider everything, may be in contradiction with your professional goals, John McCain. You may experience conflicts of authority, or a few hesitations over how to manage your career. In any case, you must display flexibility and water down your wine if you want to remain on the right track and achieve professional success. It is the only solution to this discrepancy between the Sun and your Midheaven.

★★★★★ Jupiter square Saturn, orb 5'

Jupiter and Saturn form a dissonance in your natal chart. It is far from being horrendous. This planetary configuration, which is deemed somewhere between the individual and collective characteristics, only indicates that your social integration may be delayed, or may encounter a few difficulties. Such slight delays or setbacks often have their origins in your own behaviour. Indeed, since Jupiter represents laws and public life, and Saturn, seriousness and perseverance, in many instances, you may become impatient, or even rebellious to any form of authority or legal constraints, to the extent that you cross the white line... When you face such circumstances, you must resign yourself to listening to reason and accept to wait for your turn, lest... your achievements are even more slowed down by your own haste.

★★★★★ Neptune square Midheaven, orb -5° 13'

Owing to this dissonance between Neptune and your Midheaven, John McCain, you may have difficulties in knowing what you want regarding your professional orientation. Your imagination and your flexibility cause contradictory feelings and sometimes result in indecisiveness. You are doubtful about the path your social or professional destiny should follow. There is definitely nothing serious to worry about. It is just that Neptune represents a heavy emotional burden which you must firmly deal with, so as not to delay your trek towards success!

★★★★★ Uranus inconjunction Midheaven, orb -1° 24'

Uranus is in hard aspect with your Midheaven, John McCain. There is definitely nothing serious to worry about. There may be a lack of perseverance in the efforts you put in order to move forward in your career or your social destiny. When unexpected hurdles crop up, more than anyone else, you must accept the unavoidable changes without losing sight of your aims, and above all, without getting disheartened. More than anyone, you must learn to accept the values of time and duration, if you are to reap their fruits.

★★★★★ Sun conjunction Neptune, orb 9° 43'

This harmonious Sun-Neptune aspect indicates a highly developed intuition and clear-sightedness and sometimes, a sixth sense. Mental images or information drawn from the unconsciousness impress your mind. What was only a muddled feeling turns into certainty and deep conviction. You do not necessarily

need to justify your attitudes: you take a decision because you feel that you have to do so, although you may not control the underlying logics. The danger is that you may follow fanciful or adventurous roads. Beliefs you cannot explain may prove wrong or over-optimistic. However, your intuition is seldom misleading. One last comment: there is often a keen curiosity for the « bizarre » and the paranormal with this planetary aspect.

★★★★★ Pluto sesqui-quadrant Midheaven, orb -2° 06'

Owing to this dissonance of Pluto with your Midheaven, John McCain, you may experience brutal changes in your professional or your living conditions. These upheavals are imposed on you by fate, and they sometimes take on a mysterious nature. Although you do not always understand the cause behind them, you must accept these changes as they occur, in order to bounce back in a different path, or just elsewhere.

Your Assets and Your Part of Joviality

This is the best possible position for the planet of Greater Fortune in your chart, John McCain! It offers a lot of human warmth (or it counterbalances introversion, if such propensity is indicated elsewhere in your chart), the taste for travels, optimism, vitality and an enterprising mind. You are mobile and you have a large vision. Wisdom starts with the ability to consider life from a different angle and to put all things into perspective!

This present from the stars is by no means insignificant, John McCain, the house of career, hosting the planet of Greater Fortune, can but favour your professional life. As time unfolds, it develops into a most pleasant scope. Sooner or later, it brings about success and your peers' recognition. You do not fear responsibilities, and you face them properly.

The planet Jupiter symbolizes expansion, broadness and generosity. Jupiter is associated with the functions of synthesis, enthusiasm and optimism. In your natal chart, his house position is more important than his sign position because, like Saturn, Uranus, Neptune and Pluto, he is a slow planet. Many people born in the same period have Jupiter in the same sign. This is the reason why the sign occupied here is less meaningful than when it is occupied by the so-called fast planets, i.e. the Sun, the Moon, Mercury, Venus and Mars. Therefore, some caution is to be exercised as you read what follows.

Jupiter in Sagittarius is very popular because he rules this sign, and, according to the Tradition, he is most potent and at his best. He endows you with all his natural qualities: enthusiasm, sense of humour, boldness, warmth, optimism, leadership, synthesizing mind, but also, propensity for travels or, symbolically, disposition for higher knowledge and matters such as spirituality, philosophy, politics or religion.

Your Serious Side

The side effects of melancholy or isolation are the capacity to accumulate wisdom and the ability to step back. Therefore, if you really mean it, you have the possibility to make a better distinction between the concrete values that enable you to progress in actual life, and sugary daydreams that only bring some virtual pleasure and no real meaning.

Solemnity, seriousness and discipline are your keywords, John McCain. It is difficult for you to relax, and it is most likely that at the beginning of your life, you are shy, quite introspective, and distant. You may be worried even though you have no reasons to do so. Your doubts may be overwhelming to the extent that they affect your vitality.

As time goes by, thanks to your strong will, your serious side becomes an asset for your success. You learn spontaneity, risk-taking, and lightness, and you are less concerned with the image you project because, in your heart of hearts, there already are hindsight, solemnity, and some sort of wisdom!

The planet Saturn symbolizes contraction, effort, time, limitation and concentration. Saturn eliminates anything that is not authentic, sooner or later. It is impossible to cheat him as he gives an irresistible desire to form a coherent whole with oneself, in responsible and wise ways. He is the great purifier. He represents our limitations but also our truth. In your natal chart, the house position where Saturn is posited is more important than his sign position because, like Jupiter, Uranus, Neptune and Pluto, he is a slow planet. Many people born in the same period have Saturn in the same sign. This is the reason why the sign occupied here is less meaningful than when it is occupied by the so-called fast planets, i.e. the Sun, the Moon, Mercury, Venus and Mars. Therefore, some caution is to be exercised as you read what follows.

Saturn in Pisces limits your ability to feel other people's emotions or to profusely express your own feelings. For this reason, you are less vulnerable but at the same time, you can revel in isolation. On the other hand, you are genuine, you cannot be satisfied with chimeras and you remain far away from illusions but also... from dreams!

A Few Special Points

Your Uniqueness and Your Utopias

Material topics often take an unexpected turn and may even thrive in sudden and exceptional ways. Conversely, they may also cause serious troubles. This area of your life is filled with ups and downs.

On a more symbolical plane, your attachments to people, as well as your sensual behaviour, are devoid of conventional steadfastness and quietness: you may be possessive or surprisingly detached. You are impossible to categorized and you are definitely special.

Your Inspiration and Your Illusions

It is in the relationship area that your approach may be nebulous: you tend to idealize your partner, and you may be easily influenced, and terribly irrational, when you assess the worth of your contacts. However, when the time comes, you display a formidable intuition and it is your sixth sense that "recognizes" your future spouse.

You may be weak, gullible and vulnerable in the area of human contacts. Since there is a danger to be deluded, you must use your intellect to avoid the possible traps related to your encounters, in spite of the sweet and confuse impressions they arouse.

Try not to be too lax with your associates and your relationships in general. If you make too many

sacrifices, if you refuse to face the truth, you may undergo severe losses; try to step back before committing yourself and even, before... getting married! In this way, you can benefit from the positive side of this configuration.

Your Passion and Your Authority

Your sentimental life and the way you approach leisure are intense, even obsessive. You are willing to experience amorous passions where love and hatred closely cohabit!

You are creative, and you want to influence your children and your love conquests. You never take things lightly and, sooner or later, your love games and your entertainments may take a worrisome turn because you commit yourself too deeply.

Your sentimental relationships may be tinted with sadomasochism. If you are careful to keep it light, there is no reason why you should get into trouble.

Happy gambling is part of the possible characteristics of this quite pleasant configuration. You must step back in order to be able to handle it properly.

Your Isolated Planets

In general, the ten planets of the chart are connected to other planets by major or minor astrological aspects. It is owing to those ties that the planets' energies can manifest in the chart owner's personality and play out within safeguards according to a specific tonality.

It seldom happens that in a natal chart, a planet is totally disconnected from the nine other planets.

Astrologers have observed that when such a case occurs, the person feels the energy of the unaspected planet in quite a singular way, very jerky and powerful at the same time. Thus, for instance, the famed astrologer Jean-Baptiste Morin de Villefranche wrote that "an unaspected planet heralds that something strange or extraordinary will take place regarding the meanings of the house in which the said planet is posited" (source : l'astrologie selon Morin).

Rules for detecting an unaspected planet: among all the testimonies that we have reviewed to this day, based on our experience, we tend to agree with American astrologer Janis Huntley who accepts seven aspects, which involve the zodiacal twelve sections of 30 degrees. The aspects to be considered are the conjunction (0 degree, cooperation or tension), the semi-sextile (30 degrees), the sextile and the trine (60 and 120 degrees respectively, aspects of cooperation), the square and the opposition (90 and 180 degrees respectively, tensed aspects), and the quincunx (150 degrees, slightly tensed). In this detection, the chart's angles are not taken into account.

In any case, it is important to remember that an isolated planet clearly expresses its influence when it is a personal planet. Thus, when the Sun, the Moon, Mercury, Venus, or Mars is isolated, it is certain that the effects described by Jean-Baptiste Morin de Villefranche will become manifest. As for Jupiter, Saturn, Uranus, Neptune, and Pluto, one must be cautious because the volume of cases documented is not yet large enough.

Your chart has no isolated planet, and this particular case does not apply to you.

Annex 1: Your Minor Dominants

The five following dominants are less significant than those described at the beginning of your report. They may not be strongly felt. In some cases, they add several minor details to the analysis of your character, but they are rather for curiosity purposes. It is not necessary to take them into account when you first read your portrait.

Your Planetary Repartitions: Northern, Southern, Eastern and Western Hemispheres

The axis linking the 1st house's cuspide (the Ascendant) to the 7th house's cuspide - the Descendant - divides the zodiac into two bowls, a superior bowl, in the South, and an inferior bowl in the North. Quoting an expression by the famous American astrologer Rudhyar, the Southern part and the Northern part correspond to two functions: "being" and "doing". Other concepts are also associated with this North and South distribution, such as introversion - Northern hemisphere - and extraversion - Southern hemisphere - being or appearances, inner life or external life, reflection or action, dreaming one's life or living one's dreams, the abstract or the concrete, backstage or limelight.

This is not about determination but about personal inclination: thus, some people will be thrown into public life despite a prominent Northern hemisphere. If this happens, however, it will not be due to their will, their taste or their deep nature. Conversely, a prominent Southern hemisphere will not bring about a famous destiny to its owner, even if he tends to turn the spotlight on himself, or if he looks for a more active life. It is a matter of deep nature and natural inclination. Of course, none of the typologies is "superior" to another.

In your birth chart, John McCain, the ten main planets are distributed as follows:

Your Northern and Southern Hemispheres



John McCain, the predominance of planets in the Southern hemisphere prompts you to take action, to draw attention on yourself, and to make your actions and what you have in mind visible to everyone. Sometimes, without giving a single thought to, and to the detriment of, a richer inner life and a deeper and wiser reflection. Action and communication are inevitable in your opinion, and you tend to think that the only thing that matters is what is seen! This is not always true, and it is up to you to progress through the development of inner qualities such as meditation, solitude and imagination so as to become stronger.

The birth chart is divided into two other parts, Eastern and Western, by the axis linking the Midheaven to the Imum Coeli.

The Eastern part, on the Ascendant side, shows the person's ego, will, magnetism, and vitality, whereas the Western part, on the Descendant side, symbolizes other people, communication, relationships and their influence, as well as flexibility and adaptability.

John McCain, here is the planetary repartition in your Eastern and your Western hemispheres:

Your Eastern and Western Hemisphere:

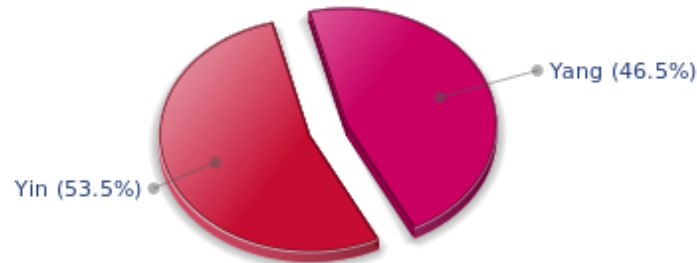


John McCain, the East and West sides are well balanced in your chart. This means that you are not too determined or authoritarian, and that you are neither impressionable nor fragile. You are capable of taking decisions, in full awareness, without anyone's help when circumstances so require. However, you have no problem taking your entourage's viewpoints into consideration, with tact and intelligence.

Your Yin and Yang Polarity

The twelve signs are divided into two polarities, called active or passive, or sometimes masculine and feminine, positive and negative, Yang and Yin. This classification corresponds to two quite distinct tonalities, the first one bringing extraversion, action, self-confidence and dynamism, the second one, introversion, reactivity, reflection and caution. None is superior to the other, each group has its own assets and shortcomings. Odd signs - Aries, Gemini, Leo, Libra, Sagittarius and Aquarius - belong to the first group, whereas even signs - Taurus, Cancer, Virgo, Scorpio, Capricorn and Pisces - belong to the second group.

Your Yin and Yang Polarity



According to the disposition and qualities of your planets and angles, you are rather influenced by Yin energy, the passive polarity, John McCain: you are quite introverted, imaginative and sometimes discreet, but you are a deep and wise person who is not content with just noisy and flashy things. At times, you doubt but you think that those who don't are a bit... thoughtless. Allow yourself to take more laid-back attitudes and put your reserve aside, because good equilibrium is always healthier.

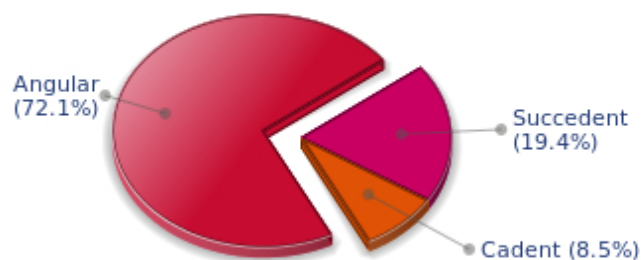
Your Houses' Accentuations

Houses are split up into three groups: angular, succedent and cadent.

The first ones are the most important ones, the most "noticeable" and energetic houses. They are the 1st, 4th, 7th and 10th houses. Their cusps correspond to four famous angles: Ascendant for the 1st house, Imum Coeli for the 4th house, Descendant, opposite the Ascendant, for the 7th house and Midheaven for the 10th house, opposite the Imum Coeli.

Planets are evaluated according to a whole set of criteria that includes comprehensive Western astrology rules. At their turn, planets emphasize specific types of houses, signs, repartitions etc., as previously explained.

Your Houses' Accentuations



Your angular houses, namely, the 1st, 4th, 7th and 10th houses, are very emphasized in your chart, John McCain: according to the Tradition, they are the strongest and most dynamic houses. Should the rest of your chart concur, angular houses suggest that you are an enterprising, energetic and assertive man. Indeed, angular houses are said to generate impulsions and to give a powerful and domineering personality.

Unusual fates are often linked to a predominance of angular houses, but this is only a partial indication...

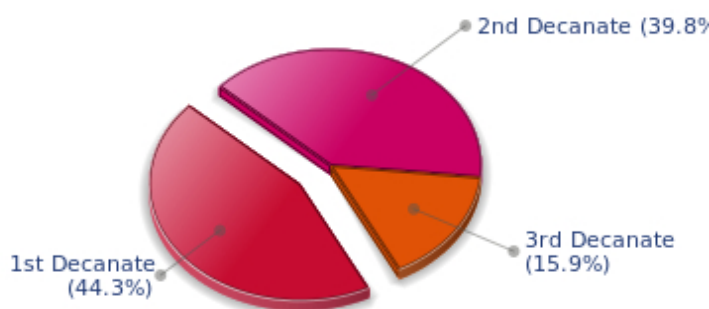
Your Esoteric Decanates

Each sign contains 30 degrees and can be divided into three equal parts: the decanates. The Tradition indicates that specific meanings can be associated to each of the three decanates. Their sphere of activity is usually limited to the Sun sign, however, it is even more interesting to observe the distribution of all the planets in the chart to get an idea of the respective importance of the three decanates, which can complement the description of the personality.

These meanings must be considered with the greatest caution. Indeed, they are minor characteristics that can only underline other outstanding traits of character.

Traditionally, the first decanate highlights the characteristics of the sign where a planet is located. The two other decanates correspond to sub-dominant planets, depending on the nature of each sign. This system leads to a multiplication of meanings and it is impossible to have a clear understanding: here, we prefer to give only the meaning of one decanate in comparison with the other two, within the birth chart as a whole. Again, the greatest caution is needed with regard to this minor indication as it is not always reliable: it is not essential that you read these texts in the beginning. You can get back to them later on, once you have read more important interpretations

Your Esoteric Decanates



The first decanate, which means the part between 0° and 10° of any zodiacal sign, prevails in your natal chart, John McCain: this decanate is traditionally linked to vitality and physical constitution, and may indicate that you efficiently express your concrete energy on the material and sensual planes.

Annex 2: Karmic Study

The karmic theme is a good complement to the psychological portrait, or natal chart. This analysis is based on the positions of the Lunar Nodes, the Black Moon and the Part of Fortune: they are also called fictitious points and describe the spiritual purpose of your destiny. Because there is in all of us an experience and a quest, our life is an evolutionary journey... provided that we head towards the right direction, of course! Indian astrologers highly prize the Nodes axis (North Node and South Node). It is the Ariadne's thread that we are invited to follow. The Black Moon indicates the sector where we are most likely to transform or to transcend, whereas the Part of Fortune points out the area where we can easily express our specificity.

The Lunar Nodes: a spiritual path

Lunar Nodes have their roots in the Indian tradition and they are based on a simple concept: each of us have a mission of their own, here on earth, a destiny, a course. According to the Indian philosophy, life is a school: the nodal axis describes our past experiences (South Node, our karma, our spiritual inheritance or our previous lives), and our aims on earth (North Node, our Dharma, the purpose of our current incarnation). This is the reason why the study of the lunar nodes is called "Karmic astrology". Here, we shall not step into hypothetical past lives. Wherever our current trends may come from, all that really matters is that we become aware of the purpose of our life, its finality and our dharma. We are likely to understand our life purpose around the age of 37, when the Lunar Nodes return to their natal position.

Your life is marked with the major challenge of developing your social image, of asserting your personality... and of leaving your shell. Your childhood and your family roots are very present. You have an inclination for quietness, protections and intimacy. You enjoy at will the moments when you feel "at home", in known territory and familiar situations. But you must learn to thrive in society, to give of your best, to socially shine, particularly when you feel that external pressure and opinions are upsetting. Do not fall in the trap of your dreams and souvenirs! Life implies responsibilities and the will to control, otherwise you cannot feel your true self. You may be too dependent and you must learn to slowly become autonomous, free to take decisions and to take action. Your sense of duty allows you to climb all the steps of a perilous, yet thrilling, social ladder. As years go by, you claim more autonomy, more power and more freedom of action.

Lilith or the Dark Moon

The Black Moon is the spark of refusal and distance that is dormant in all of us. Depending on the sign where she is found in your chart, she highlights the desire to transform and to sublimate a part of your life. The Black Moon is unfathomable and mysterious. She gives a different dimension to the sector she touches. Her manifestations are subtle; nonetheless, she is powerful, implacable, demanding to the extreme... The Black Moon is also called Lilith. She is the inner flame of your heroism and insubordination.

You decidedly assert yourself as a person made of desires, love and the absolute. If this configuration is not well controlled enough, your thirst for timeless relationships may hamper simple, natural and obvious affairs. You may reject persons whose attitudes do not perfectly live up to your expectations. However, as you keep on looking for your muse, it is very likely that you will find the person to whom fate has relentlessly tied you.

This configuration predisposes to the quest of the absolute on two accounts: firstly, the very nature of the

Black Moon, implacable and extremist, and secondly, she is in a sector of the Zodiac that is traditionally evolutional but extremist. Here, you flirt with death, danger and challenge. Everything suggests transformation, abandonment and revival, passion and cruelty. There is no half-measure in your behaviour, only a terrifying and marvellous thirst for the absolute... That'll take some doing for the person who will experience it with required intensity!

The Part of Fortune in House

The Part of Fortune is a very ancient fictitious point that depends on the lunar phase at the time of birth. The astrological house tenanted is particularly strengthened. In your chart, the Part of Fortune is in the 5th house: to you, success means to create, to produce a fruit or a work, or to give birth to a child. Being in this world does not content you; you need "to do", to design, to live hand-to-hand with your surroundings. You are sensitive to power and you want to arouse esteem and admiration in your entourage.

Retrograde Planets

The karmic tradition insists on the issues related to the so-called retrograde planets. They are considered to be the inheritance of a past that was not well experienced, a sort of unfinished business. The interpretations of the retrogradation may seem negative or excessive to you. However, you may relate to a scenario that you have often and repeatedly experienced... as if you underwent several setbacks that all have the same cause. Until the day you become aware of it and you can free yourself from it! Through the slow integration of these planetary energies, you will be able to overcome your difficulties and to pay your karmic debt. Actually, each retrograde planet highlights an opportunity for evolution. Nothing can be achieved without the will to grow spiritually and to defeat your own demons.

The karma associated with Saturn may border on self-censorship: during your childhood, particularly, you were doubtful of your abilities and your talents. You had a propensity to put yourself in a no-win situation and to under-estimate yourself. Obstacles abound: taboos and prohibitions of all kind slow down your evolution. Little by little, you learn to re-evaluate your possibilities and to gain more self-confidence. Your personal rigour then turns out to be constructive: you are not destabilized by life ordeals and you practice a self-discipline that favours steady evolution. Although your path may be steep, it is nonetheless safe.

Uranus was retrograding on the day of your birth: you have the soul of a rebel and your behaviour may often be tyrannical or extremist. Your manner has brought you setbacks. You lack the flexibility that spares you the pain of forcing your ways through events. The danger may be that you get trapped into rigid patterns and into personal logics incompatible with others'. This is precisely what your life's lesson is about: as years go by, your judgments are more qualified and your attitudes become less cut-and-dried, less stubborn. You must lose the essentially individualistic character of your childhood and be more open to other people's ideas and problems. In other words, a path of love. Without losing your remarkable resolution, you must practice some form of renunciation and be sensitive to various logics that constitute the wealth of your social life.

N.B: modern astrology attaches less and less importance to the principles of retrograding planets.

Conclusion

A few remarks are needed here in order to allow you to fully take advantage of your astrological portrait: firstly, do not forget that a birth chart is also a photograph of the sky at birth and a structure that not only contains the personality's characteristics, but also its potential evolution.

We all know that, in real life, people begin to know themselves when they are in their forties, or even later. Likewise, several traits of character in a portrait may seem surprising: in most cases, it means that such features are not yet developed.

Some personalities reveal themselves late in life, whereas others are more precocious. It must be remembered that psychological structures are in a state of continuous evolution because they are influenced by unfolding events and gradual maturity. We can never underline strongly enough the "mobile" nature of the personality, throughout a lifetime.

On the other hand, it is difficult to discriminate what is "already present" at this moment in your life when you are reading your chart's interpretation, from what will appear later in the logic of your evolution: you must sort out all the pieces of information provided and, in most cases, you will see that your astrological portrait is helpful for your endeavours to know yourself better.

Finally, several readings of an astrological portrait are usually necessary in order to absorb all its different meanings and to evaluate the relevance of each character trait.

In any case, better self-knowledge obviously contributes to faster personal blossoming, and it is undoubtedly one of astrology's major roles: contributing to know oneself better, in order to improve more rapidly, to deal with one's weaknesses and to avoid its drawbacks, and to take advantage of one's assets as efficiently as possible.
