

**Yoko Ono's  
Astrological Portrait**





# Yoko Ono's Astrological Portrait



<b>Introduction</b>	<b>2</b>
<b>Your Planets, Houses, Aspects, and Natal Chart</b>	<b>4</b>
<b>Preamble</b>	<b>7</b>
<b>Your Planetary Repartitions</b>	<b>8</b>
<b>Your Dominant Modes and Elements</b>	<b>9</b>
<b>Your Dominants: Planets, Signs and Houses</b>	<b>10</b>
<b>Your Style, Behaviour, and Peculiarities</b>	<b>15</b>
<b>Your Sensitivity</b>	<b>19</b>
<b>Your Affectivity</b>	<b>20</b>
<b>The Way You Take Action and Your Sexuality</b>	<b>21</b>
<b>Your Intellect and Your Communication Style</b>	<b>23</b>
<b>Your Goals, Motivations, Career, and Destiny</b>	<b>24</b>
<b>Your Assets and Your Part of Joviality</b>	<b>26</b>
<b>Your Serious Side</b>	<b>27</b>
<b>A Few Special Points</b>	<b>27</b>
<b>Your Isolated Planets</b>	<b>29</b>
<b>Annex 1: Your Minor Dominants</b>	<b>30</b>
<b>Annex 2: Karmic Study</b>	<b>34</b>
<b>Conclusion</b>	<b>37</b>



# Yoko Ono's Astrological Portrait

## Introduction

To fully benefit from this portrait, we suggest that you read its introduction and its preamble carefully, and then that to take the time to soak up the interpretations of each chapter. Given the large number of texts, which mirrors the human being's complexity, you may need to go through the contents several times, so as to get a good grasp of their meaning and to know yourself better. This will reward your patience.

The purpose of this report is to describe your psychological portrait and to highlight the most fundamental features on the personal area. The report begins with the analysis of your planetary dominants and outlines your personality's general traits before going into further detail. Minor dominants are analysed at the end of Annex 1, for purposes of clarity. Your report then delineates the various facets of your personality:

In general, even when relationships are not involved, we express ourselves and we feel according to our character and our personal motivations: this is indicated by the Ascendant and the Sun sign which both give details on the way we function. They shed a tremendously important light which allows to figure out your personality. Here, we describe your Sun sign (your inner self), your Ascendant (your behaviour as seen by others), and the ruler of the Ascendant (interesting additional pieces of information about the style of your personality). These descriptions alone cover nearly a third or a half of your psychological signature, depending on your natal chart characteristics.

Then, we address your sensitivity, or in other words, the way you receive things and how you express your emotions ; it works as a constant filter for all your exchanges, even when it becomes a more secondary element in your amorous relationship, because at that moment, affectivity prevails. Sensitivity is the way you perceive things, it is your radar, your daily mood, and at the same time, it indicates how you react to your entourage, on a daily basis. It is what others immediately see of you. In the second paragraph, we explain in which areas of life your sensitivity and your emotions are strongest, therefore, where you are most vulnerable.

After this, it is your affectivity, the way you love and how you charm, that comes into play as soon as you fall in love: the first part indicates its basic structure or its main form. The second part describes the areas where it is best expressed and how you display it, according to your personality.

A third fundamental area deals with your mode of action and your sexuality: how you behave, how you manage to obtain what you want, what kind of desires you have. There are twelve possibilities, very

different from one another. The study discloses the specific one that applies to you. In the second paragraph, we explain in which life areas you may most efficiently take advantage of your capacity for action and for conquest.

Your ways of communicating and of thinking are obviously among the major elements that must be integrated into the delineation and the description of your personality. Indeed, they influence your general behaviour and may modify or enhance the image your project (for instance, extraversion may “compensate” a weak affectivity, but a huge number of cases are possible). An additional chapter indicates the favourite areas where you enjoy communicating, thinking and meeting with people.

Besides, we analyze an even more personal aspect that is important to define and understand what may occur within your couple: each of us have a centre of interest, a privileged manner to be fulfilled or to achieve our destiny; this main motivation is indicated by the positions of your Sun and your chart ruler in the astrological houses and we provide you with its detailed description.

A natal chart contains the potential for specific fulfilment and a whole range of assets, protections and qualities. How does the lucky factor manifest in your personality? In which area can you best exploit your qualities? The answers are precisely revealed to you in this chapter.

On the other hand, we all feel in us a part of vulnerability, doubts and fears. How does this part of solemnity or serious side play out? How is it possible to handle it in order to evolve and to get rid of useless elements? All this information is provided to you in these two paragraphs.

Then, you can discover three additional traits of your personality that must be considered as secondary ones. They deal with your predispositions, which means that they need to be triggered by external events because they are not influenced by your will; let's call it a part of fate. Please, bear in mind that your destiny can unfold only in accordance with what you are: therefore, even if they belong to your more unconscious self, these characteristics are parts of you, definitely.

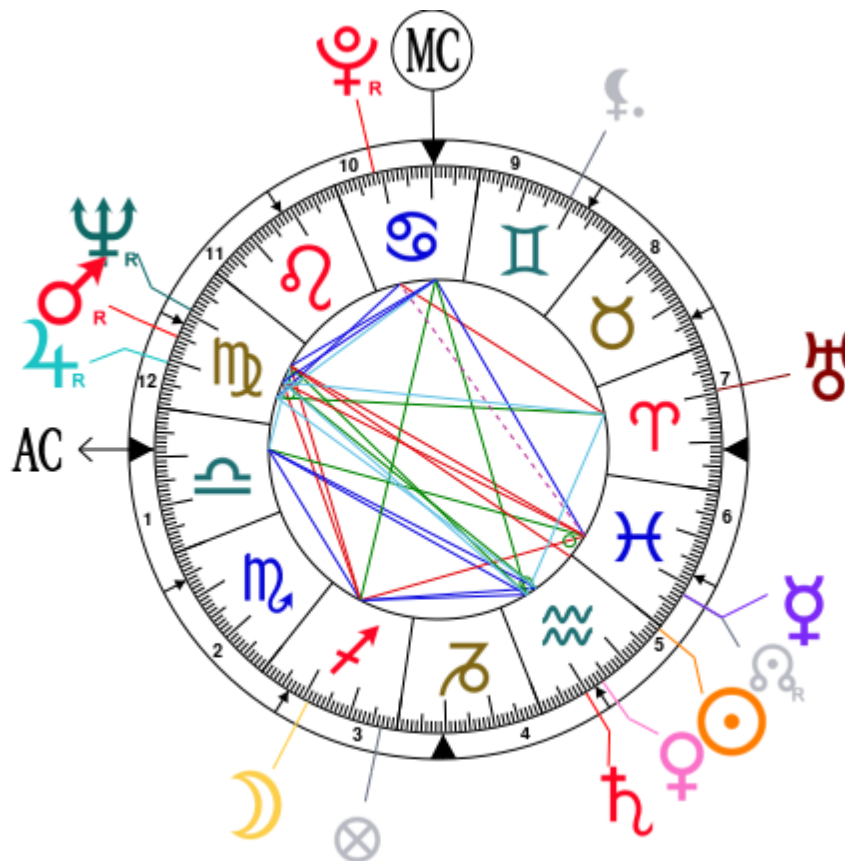
The karmic chart complements the psychological portrait or natal chart. It is based on the positions of the Lunar Nodes, the Black Moon, and the Part of Fortune. These elements of the chart, sometimes referred to as fictitious points, provide information about the spiritual meaning of your destiny. Owing to the fact that we all have in us acquired knowledge and the urge to go on a quest, our life is an evolutionary journey... However, these texts must be read with great caution: this is the reason why you will find this analysis in the Annex 2 of your report.

# Your Planets, Houses, Aspects, and Natal Chart

Yoko Ono, born February 18, 1933, at 08:30 PM, Tokyo (Tokyo), Japan [139.46E ; 35.42N ; 9E00]

Natal Planets			In House	Natal Houses (Placidus)	
☉ Sun	29°23'	♒ Aquarius	House 5	House 1	8°30' ♎ Libra
☾ Moon	11°08'	♐ Sagittarius	House 3	House 2	5°56' ♏ Scorpio
☿ Mercury	7°53'	♓ Pisces	House 5	House 3	6°38' ♐ Sagittarius
♀ Venus	13°47'	♒ Aquarius	House 5	House 4	9°25' ♐ Capricorn
♂ Mars	15°08' R	♍ Virgo	House 12	House 5	12°03' ♒ Aquarius
♃ Jupiter	20°42' R	♍ Virgo	House 12	House 6	12°13' ♓ Pisces
♄ Saturn	9°44'	♒ Aquarius	House 4	House 7	8°30' ♈ Aries
♅ Uranus	20°33'	♈ Aries	House 7	House 8	5°56' ♉ Taurus
♆ Neptune	9°05' R	♍ Virgo	House 11	House 9	6°38' ♊ Gemini
♇ Pluto	21°38' R	♋ Cancer	House 10	House 10	9°25' ♋ Cancer
♁ Node	7°48' R	♓ Pisces	House 5	House 11	12°03' ♌ Leo
♇ Lilith	10°50'	♊ Gemini	House 9	House 12	12°13' ♍ Virgo
AS AS	8°30'	♎ Libra			
MC MC	9°25'	♋ Cancer			

In keeping with the common practice, we consider that a planet posited within 1 degree of the next house belongs to that house. We allow an orb of 2 degrees for the ASC and the MC.



## List of Your Active Planetary Aspects

Please find below the list of all the active inter-aspects which are interpreted in this report, in addition to your planets in sign, in house, and all your planetary dominants. Since the aspects between slow-moving planets are of a collective nature, they are not displayed, in compliance with our interpretation rules.

- ★★★★★ Sun conjunction Mercury, orb 8° 3'
- ★☆☆☆☆ Sun opposite Neptune, orb -9° 41'
- ★★★☆☆ Moon square Mercury, orb -3° 14'
- ★★★★★ Moon sextile Venus, orb 2° 39'
- ★★★☆☆ Moon square Mars, orb -3° 59'
- ★★★★★ Moon sextile Saturn, orb -1° 23'
- ★★★☆☆ Moon square Neptune, orb 2° 03'
- ★★★★★ Moon sextile Ascendant, orb 2° 37'
- ★☆☆☆☆ Moon inconjunction Midheaven, orb 1° 43'
- ★★★☆☆ Mercury opposite Mars, orb -7° 14'
- ★★★☆☆ Mercury opposite Neptune, orb -1° 11'
- ★☆☆☆☆ Mercury sesqui-quadrant Pluto, orb -1° 15'
- ★☆☆☆☆ Mercury inconjunction Ascendant, orb -0° 36'
- ★★★★★ Mercury trine Midheaven, orb 1° 31'
- ★☆☆☆☆ Venus inconjunction Mars, orb -1° 2'
- ★☆☆☆☆ Venus bi-quintile Jupiter, orb -0° 54'
- ★★★★★ Venus conjunction Saturn, orb 4° 02'
- ★★★★★ Venus trine Ascendant, orb 5° 16'
- ★★★★★ Mars conjunction Jupiter, orb 5° 34'
- ★☆☆☆☆ Mars bi-quintile Saturn, orb 0° 36'
- ★☆☆☆☆ Mars bi-quintile Uranus, orb 0° 34'
- ★★★★★ Mars conjunction Neptune, orb 6° 02'
- ★☆☆☆☆ Mars sextile Midheaven, orb 5° 42'
- ★☆☆☆☆ Jupiter quintile Midheaven, orb -0° 42'
- ★★★★★ Saturn trine Ascendant, orb 1° 13'
- ★★★☆☆ Saturn inconjunction Midheaven, orb -0° 19'
- ★☆☆☆☆ Neptune semi-sextile Ascendant, orb -0° 34'
- ★★★★★ Neptune sextile Midheaven, orb -0° 2'

## Meaning of Stars

Stars indicate the strength of the aspects. Two solid coloured stars (there are half-stars also), mean that the aspect is powerful enough to be noticed at the first reading.

We strongly advise that you read the paragraphs displaying less than two stars later on, after you have absorbed the full import of the other texts.

The yellow colour indicates a soothing and conciliating aspect, and the red colour, a dynamic and tense aspect. The red aspects enable you to evolve, to take action, and to learn to turn your "weaknesses" into assets through your life experiences. The yellow aspects are innate strengths on which you rely in order to grow better with the former...

## Preamble

When interpreting a natal chart, the best method is to start gradually from general features to specific ones. Thus, there is usually a plan to be followed, from the overall analysis of the chart and its structure, to the description of its different character traits.

In the first part, an overall analysis of the chart enables us to figure out the personality's main features and to emphasize several points that are confirmed or not in the detailed analysis: in any case, those general traits are taken into account. Human personality is an infinitely intricate entity and describing it is a complex task. Claiming to rapidly summarize it is illusory, although it does not mean that it is an impossible challenge. It is essential to read a natal chart several times in order to absorb all its different meanings and to grasp all this complexity. But the exercise is worthwhile.

In brief, a natal chart is composed of ten planets: two luminaries, the Sun and the Moon, three fast-moving or individual planets, Mercury, Venus and Mars, two slow-moving planets, Jupiter and Saturn, and three very slow-moving planets, Uranus, Neptune and Pluto. Additional secondary elements are: the Lunar Nodes, the Dark Moon or Lilith, Chiron and other minor objects. They are all posited on the Zodiac wheel consisting of twelve signs, from Aries to Pisces, and divided into twelve astrological houses.

The first step is to evaluate the importance of each planet. This is what we call identifying the dominant planets. This process obeys rules that depend on the astrologer's sensitivity and experience but it also has precise and steady bases: thus, we can take into account the parameters of a planet's activity (the number of active aspects a planet forms, the importance of each aspect according to its nature and its exactness), angularity parameters; (proximity to the four angles, Ascendant, Midheaven, Descendant and Imum Coeli or Nadir, all of them being evaluated numerically, according to the kind of angle and the planet-angle distance) and quality parameters (rulership, exaltation, exile and fall). Finally, other criteria such as the rulership of the Ascendant and the Midheaven etc. are important.

These different criteria allow a planet to be highlighted and lead to useful conclusions when interpreting the chart.

The overall chart analysis begins with the observation of three sorts of planetary distributions in the chart: Eastern or Western hemisphere, Northern or Southern hemisphere, and quadrants (North-eastern, North-western, South-eastern and South-western). These three distributions give a general tone in terms of introversion and extraversion, willpower, sociability, and behavioural predispositions.

Then, there are three additional distributions: elements (called triplicity since there are three groups of signs for each one) - Fire, Air, Earth and Water - corresponding to a character typology, modality (or quadruplicity with four groups of signs for each one) - Cardinal, Fixed and Mutable - and polarity (Yin and Yang).

There are three types of dominants: dominant planets, dominant signs and dominant houses. The novice thinks astrology means only "to be Aries" or sometimes, for example, "to be Aries Ascendant Virgo". It is actually far more complex. Although the Sun and the Ascendant alone may reveal a large part of the character - approximately a third or a half of your psychological signature, a person is neither "just the Sun" (called the sign) nor just "the first house" (the Ascendant). Thus, a particular planet's influence



may be significantly increased; a particular sign or house may contain a group of planets that will bring nuances and sometimes weaken the role of the Ascendant, of the Sun sign etc.

Lastly, there are two other criteria: accentuations (angular, succedent and cadent) which are a classification of astrological houses and types of decanates that are occupied (each sign is divided into three decanates of ten degrees each). They provide some additional informations.

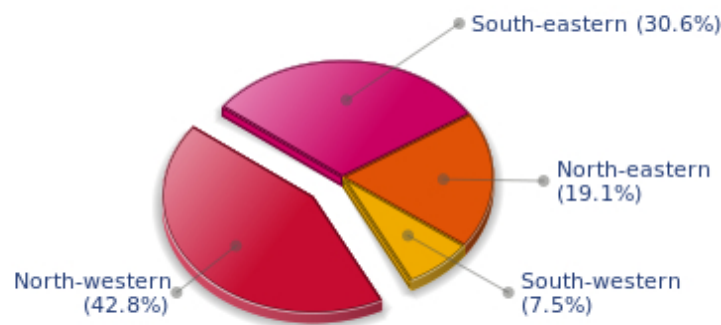
These general character traits must not be taken literally; they are, somehow, preparing for the chart reading. They allow to understand the second part of the analysis, which is more detailed and precise. It focuses on every area of the personality and provides a synthesis of all the above-mentioned parameters according to sound hierarchical rules.

As explained in the introduction of your Psychological Portrait report, minor dominants are analysed at the end of Annex 1, for purposes of clarity.

## Your Planetary Repartitions

Each quadrant is a combination of the four hemispheres of your birth chart and relates to a character typology. The Southern hemisphere – the top of your chart, around the Midheaven – is associated with extraversion, action, and public life, whereas the Northern hemisphere prompts to introversion, reflexion, and private life. The Eastern hemisphere – the left part, around the Ascendant – is linked to your ego and your willpower, whereas the Western hemisphere indicates how other people influence you, and how flexible you are when you make a decision.

### Your Four Quadrants

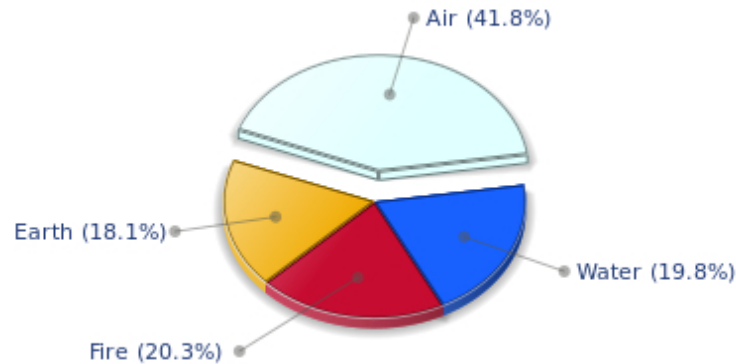


Yoko Ono, the nocturnal North-western quadrant, consisting of the 4th, 5th and 6th houses, prevails in your chart: this sector favours creativity, conception and some sort of specialization or training, with helpfulness and relations as strong components. You need others' cooperation in order to work properly, although you are not very expansive: creating, innovating and thinking are what matter most to you because this self-expression enriches you and totally satisfies you.

## Your Dominant Modes and Elements

Yoko Ono, here are the graphs of your Elements and Modes, based on planets' position and angles in the twelve signs:

### Your Four Elements

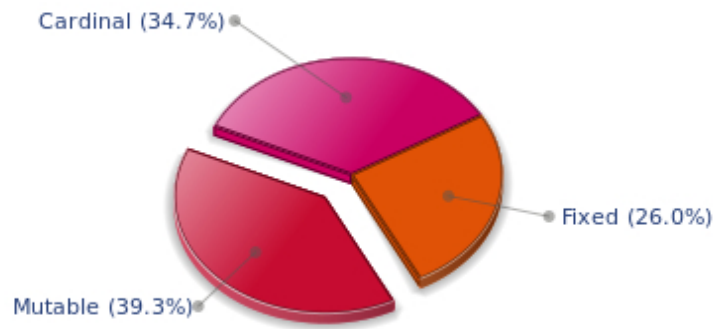


Cheers for communication and mobility, Yoko Ono! The predominance of Air signs in your chart favours and amplifies your taste for relations and for all kinds of short trips, whether real (travels) or symbolic (new ideas, mind speculations). You gain in flexibility and adaptability what you lose in self-assertion or in pragmatism.

Yoko Ono, Fire is dominant in your natal chart and endows you with intuition, energy, courage, self-confidence, and enthusiasm! You are inclined to be passionate, you assert your willpower, you move forward, and come hell or high water, you achieve your dreams and your goals. The relative weakness of this element is the difficulty to step back or a kind of boldness that may prompt you to do foolish things.

The twelve zodiacal signs are split up into three groups or modes, called quadruplicities, a learned word meaning only that these three groups include four signs. The Cardinal, Fixed and Mutable modes are more or less represented in your natal chart, depending on planets' positions and importance, and on angles in the twelve signs.

## Your Modes



The Mutable mode is the most emphasized one in your natal chart, Yoko Ono, which indicates a mobile character that is curious and thirsty for new experiences and evolution. You are lively and flexible, and you like to react quickly to solicitations, but don't confuse mobility with agitation, since this is the danger with this configuration - and with you, stagnation is out of the question. Security doesn't matter as long as you are not bored. You optimize, you change things, you change yourself... all this in a speedy way.

## Your Dominants: Planets, Signs and Houses

The issue of dominant planets has existed since the mists of time in astrology: how nice it would be if a person could be described with a few words and one or several planets that would represent their character, without having to analyse such elements as rulerships, angularities, houses, etc!

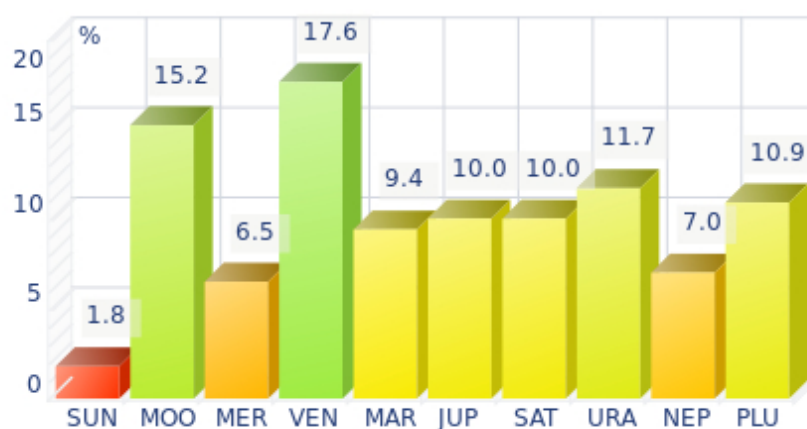
The ten planets - the Sun throughout Pluto - are a bit like ten characters in a role-play, each one has its own personality, its own way of acting, its own strengths and weaknesses. They actually represent a classification into ten distinct personalities, and astrologers have always tried to associate one or several dominant planets to a natal chart as well as dominant signs and houses.

Indeed, it is quite the same situation with signs and houses. If planets symbolize characters, signs represent hues - the mental, emotional and physical structures of an individual. The sign in which a planet is posited is like a character whose features are modified according to the place where he lives. In a chart, there are usually one, two or three highlighted signs that allow to rapidly describe its owner.

Regarding astrological houses, the principle is even simpler: the twelve houses correspond to twelve fields of life, and planets tenanted any given house increase that house's importance and highlight all relevant life departments: it may be marriage, work, friendship etc.

Yoko Ono, here is the evaluation diagramme for your planets:

## Your Dominant Planets



The three planets that are most highlighted in your chart are Venus, the Moon and Uranus.

With Venus among your dominant planets, one of your first reflexes is... to please! Your look, your charm, and your seduction are omnipresent elements in your behaviour.

Your approach to things is connected to your heart, and for you, no real communication can flow if your interlocutors exude no sympathy or warmth. Cold and logical reasoning, clear thoughts and good sense are not important to you: if there is no affective bond with your environment, no connection can be established with the Venusian that you are, and nothing happens.

You have a strong artistic side, and you never neglect subjective but clear concepts such as pleasure, beauty, and also sensuality. However, sometimes to the detriment of efficiency, durability, logic, and... detachment.

The Moon is one of the most important planets in your chart and endows you with a receptive, emotive, and imaginative nature. You have an innate ability to instinctively absorb atmospheres and impressions that nurture you, and as a result, you are often dreaming your life away rather than actually living it.

One of the consequences of your spontaneity may turn into popularity, or even fame: the crowd is a living and complex entity, and it always appreciates truth and sincerity rather than calculation and total self-control.

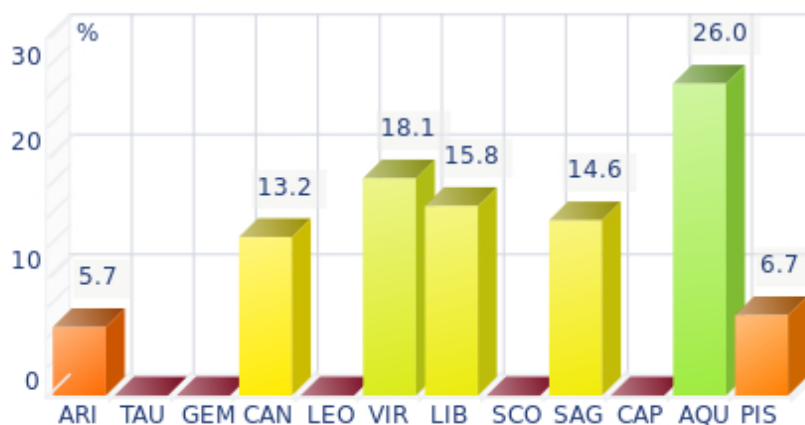
As a Lunar character, you find it difficult to control yourself, you have to deal with your moods, and you must be careful not to stay passive in front of events: nothing is handed on a plate, and although your sensitivity is rich, even richer than most people's, you must make a move and spare some of your energy for... action!

Uranus among your dominant planets: just like Neptune and Pluto, Uranian typology is less clearly defined than the so-called classical seven planets that are visible to the naked eye, from the Sun to Saturn. However, it is possible to associate your Uranian nature with a few clear characteristics: Uranus rhymes with independence, freedom, originality, or even rebelliousness and marginality, when things go wrong...

Uranus is Mercury's higher octave and as such, he borrows some of its traits of character; namely, a tendency to intellectualize situations and emotions with affective detachment, or at least jagged affectivity.

Therefore, you are certainly a passionate woman who is on the lookout for any kind of action or revolutionary idea, and you are keen on new things. Uranians are never predictable, and it is especially when they are believed to be stable and well settled that... they change everything - their life, partner, and job! In fact, you are allergic to any kind of routine, although avoiding it must give way to many risks.

### Your Dominant Signs



In your natal chart, the three most important signs, delineated according to the above-mentioned criteria, are, in decreasing order of strength, Aquarius, Virgo and Libra. They are often prominent because your Ascendant and your Sun are posited there. However, it is not always the case: it may be because they are occupied by a cluster of planets, by a planet near an angle other than the Midheaven and the Ascendant, or because two or three planets are very active and form numerous aspects from these signs. Therefore, you partly take on the three signs' characteristics, which are somehow superimposed on your natal chart, and all the more so if any of the signs in question is highlighted.

Aquarius is one of the most important signs in your natal chart: it endows your personality - at least one of its facets - with originality, to the point of eccentricity in spite of a sometimes distant and humane side. Likeable and impassive at the same time, you are a paradoxical woman, very hard to define because the two planets Uranus and Saturn blend their qualities to create the so complicated and endearing sign that inspires your character. Saturn's seriousness and impassivity is added to Uranus' rebellion, talent, individualism, charisma, extravagance, and unpredictability! One of your main characteristics is that you never open up on a personal basis, but you tend to do so easily in public. You are actually quite strange. Sexy and charming in public, despite your nice and sociable character, you could frustrate many of your admirers in private because of your impossibility to show deep and warm affection, emotions, tears... But appearance and reality are two different things anyway - you are a kind of a genius, or you have at least a tremendous charm with this sign. You have many friends and an active social life. If you are detached in your love life - only in this aspect, since the rest of chart will confirm it or not - this is no big deal!

Virgo, associated with perfectionism, numbers and reason, is among your dominant signs: you inherit its sense of responsibility and tidiness, a clear mind, an unflinching logic, as well as a need to be useful and to fulfil your task to the best of your abilities. Obviously, people may think that you are too modest or

reserved, suspicious or pessimistic because of your exceedingly critical mind, but aren't logic and wisdom great qualities? Of course, they are. Moreover, you keep your feet on the ground, you never behave irrationally and you are helpful and hardworking - what more can you ask for?!

With Libra as a dominant sign in your birth chart, you love to please, to charm, and to be likeable. Moreover, you are naturally inclined towards tolerance and moderation, as well as elegance and tact, as if you were meant to please! Of course, you always find malcontents who criticize your lack of authenticity or of courage and your half-heartedness, but your aim is to be liked, and in this field, you are an unrivalled champion!

### Your Dominant Houses



Houses 5, 12 and 3 are the most tenanted ones in your natal chart. To compute their strength, planets and angles are weighed according to various astrological criteria such as swiftness, activity, angularity, rulership etc. From the analysis of the most tenanted Houses, the Astrologer deduces the fields of activity that are most relevant to you, be it because of what you are experiencing, or what you may experience in the future, or because of your deep inner motivations.

The 5th house is one of your dominant houses: hobbies, love life, sports, and games, including speculation and all kinds of entertainment, are fields that you actually take seriously! On a more subtle level, artistic creation as well as other forms of creation - including begetting children - could be one of your assets. You gain from taking part in leisure associations and various activity clubs in which a catchword resounds more than for most people: pleasure.

The 12th house is emphasized in your chart: like the 8th house, it has a rich and complex meaning. Although its bad reputation is likely to scare most readers in the first place - it is indeed the house of hidden or isolated places, of solitude, of ordeals or enemies - it can also mean that a part of your life is very deep and intense. If your achievements are not visible in the public eye, you may fulfil yourself in a different but equally important way: you may be involved in secret activities, humanitarian causes, and projects in favour of disadvantaged people. You are likely to work in quiet and remote places. In many cases, you will gain from these hidden activities as many treasures as people who have a more public destiny. It may be because you sublimate your work, or only because you successfully carry out your task within your environment. There is no such things as a good or a bad house, because each area of life is necessary in its own way, and we need all of them, if we are to improve spiritually.

As the 3rd house is one of the most important houses in your chart, communication plays a major role in your life or in your deep motivations: frequent short trips, open-mindedness - which may offset a lack of mutable signs for instance - listening, discussion, interest in learning, knowledge accumulation or long-term studies, etc., are all areas that greatly appeal to you and are part of your daily life.

## Your Style, Behaviour, and Peculiarities

What is commonly known as "sign" indicates the position of the Sun in the Zodiac. The Sun highlights all the characteristics of the sign he tenants. According to astrology traditional rules, these characteristics are all the more pure and exact when the Sun is strong in the sign, or when the sign is particularly highlighted within the chart. Here, we indicate the pure characteristics of the sign but you must bear in mind that they may only shed a light on a particular aspect of your personality. Indeed, the sole sign of the Sun, or of the Ascendant, can never describe an astrological chart because it depends on the degree of strength of the said sign in your chart.

Another important point must be underlined. Contrary to the Ascendant, which clearly describes your appearance, your vitality, your physical constitution, your spontaneous behaviour and the image you project, your Sun sign describes your inner self, which you may not completely be aware of, and which may emerge gradually as you mature: it is about your inner personality that you reveal only to the members of your entourage whom you trust. The Sun sign is likely to be the final form of your personality, once it has evolved in line with the energies of the other parts of your chart, the beginning of which is seen in the Ascendant, your external "bark".

The Ascendant is one of the major components of your natal chart. It is the zodiacal sign that rises in the East at the very moment of your birth. To calculate it, it is therefore necessary to know your exact time of birth.

It provides with a wealth of information on your personality. It is one of the key features that allows the analysis of several parts of you, such as your appearance, your character as it is initially perceived and your immediate behaviour. It describes the external aspect of your personality which you always display, but it also describes your physical constitution in the long-term, in other words, your health.

Please be aware that, in spite of the importance of the Ascendant, the accuracy of its description depends on how strongly highlighted it is in your natal chart. We use the entire set of astrological rules to assess the strength of the Ascendant. In most cases, the Ascendant is as revealing as your "sign", i.e., the sign where the Sun is posited at the time of birth.

## You were born under the sign of Aquarius and your Ascendant is in Libra

Before broaching the details of the meaning of your Sun and your Ascendant, as a preamble, we offer a brief generic interpretation of their combination in your chart:

Look! Here comes an angel... This is the first impression given by your sign combination. Your Sun and Ascendant signs both have Air as their element, the attributes of which are superficiality and quick-wittedness, communication skills, and interest in other people. With the help of Venus, who rules Libra and endows you with sweetness and refinement, it is easy for you to charm everyone with your kindness and your tolerance. It is true that you do not belong to the category of the people who stay on their own, and you may be criticised for disliking solitude and revelling in frenzied sociability. Fortunately, Uranus, the ruler of your Sun sign, keeps a watchful eye and prompts you to seek absolute freedom and independence, as well as intellectual intransigence. Owing to Saturn, these two signs share the same quality of seriousness. Despite its constant originality, Aquarius's approach of the world is



paradoxically grave and almost solemn. As for Libra, it is concerned about moderation and perfect harmony. Actually, your malleability is only an outward appearance, and your angelic and sociable nature is not too eager to get involved in, and be confronted to, relationships which are too laden with emotions or libido.

### **You were born with the Sun in Aquarius**

In the sentimental sphere, you are particularly sensitive to the values of friendship, in the sense that you see yourself as a link within a chain, certainly a different and original one, but with no will to flatter your ego or to individually assert yourself. On the contrary, your aim is to immerge yourself in your friendly relations and to participate in projects and ideals of the whole human community.

As you are born under this sign, you are idealistic, altruistic, detached, independent, original, surprising, gifted, contradictory, innovative, humanistic, likeable, friendly, self-confident, impassive, quiet, intuitive, creative, charitable, elusive, disconcerting, generous, tolerant, paradoxical, and you cannot stand any kind of constraint. But you may also be marginal, resigned, distant, utopian, maladjusted, eccentric and cold.

In love, Madam, you are the inquiring sign of the Zodiac. You are cerebral and lively, always on the look-out for novelty or for anything amazing.

You are often more in love with love than you are in love with your partner. You are surprising and unpredictable, now passionate and using your imaginative and mental powers to idealize your relationship and your partner, now cold, suddenly detached and impersonal because you are annoyed by subtle elements that you, and only you, can understand.

You do not stand disappointment and you display great cleverness when you want to suddenly break up when your partner least expects you to do so.

In order to be able to charm you, one must be exceptional, amazing, disconcerting and one must accept to grant you total freedom and independence. Under those conditions only, will you be able to have a long-lasting, stable yet eventful, surprising and harmonious relationship with your chosen partner. Once trust and confidence settle in, you will be fulfilled and you will be hardly recognizable.

The life span of your couple depends mainly on your common tastes: ideally, you should live with a man who actually is your friend and your lover, continuously shifting from one role to the other according to circumstances, and who, at the same time, provides you with a much needed mental stimulation, as well as with warm love.

### **Your Ascendant is in Libra**

Psychologically speaking, your nature is sanguine and communicative or nervous and introverted, depending on who prevails, either Venus, the principle of harmony, extraversion, desire to seduce, easy and airy communication, or Saturn, the principle of rigour, introversion, self-control, concentration and meditation. Unless Saturn is very strong in the rest of the chart, Libra is very delicate and charming. She easily adjusts in society, particularly with her perpetual search of compromise. It is the reason why you may seem to be hesitant and weak. You do not dare to insist or to assert your views: you prefer to intervene as an agent for harmony, of rally and equity, even to the detriment of your self-assertion. You

loathe violence and you strive with all your heart to pacify, to smooth things over, and to adjust to the situation with flexibility and grace.

Since you are born under this sign, you are sentimental, charming, courteous, delicate, refined, loyal, pacifist, fair, distinguished, light, romantic, cultured, airy, likeable, spruce, perfectionist, caring, gentle, quiet, tidy, social, artist, with strong aesthetic tastes, tolerant, lenient, sociable, seductive, elegant, kind, respectful, balanced, but you may also be hesitant, weak, wavering, selfish, fragile, indecisive, timid, indolent, cold or even insensitive.

In love, Madam, you are the seductress of the Zodiac: love is your major area of concern and to please is the very expression of your whole being. You are so charming, so considerate, you multiply your conquests with lightness and you are on top form while you are awaiting the love of your lifetime. You have every chance to find him because all your talents are oriented towards communication and meeting with people who, invariably, think that you are charming and distinguished, pleasant and educated, with a lot of good taste and that you manage to make your interlocutor feel comfortable.

As you are exceedingly demanding, it is very likely that you will be disappointed by many lovers and admirers, however, you will never be tired of starting over again your nice soul mate hunting.

You are mildly narcissistic and you have an instinctive need to charm and to see the effects of your seductive powers. The danger is that you may be selfish or that your frenzied need for compliments cannot be fulfilled by your partner who is not able to praise you as well as you expect him to...

You are more sentimental and aesthetics-oriented than Taurus, who is more physical or sexual. The relationship with your partner must include many intellectual exchanges and a deep closeness regarding your artistic tastes or your daily lifestyle.

In general, you will marry only once, in spite of your capacity to charm and to have romantic encounters.

### **The ruler of your chart is in Aquarius**

The ruler of the Ascendant, also referred to as the chart ruler, brings a few interesting nuances to the meanings provided by the Sun and the Ascendant. The sign in which the ruler of the Ascendant is posited fine-tunes the style of personality described by the Sun and the Ascendant. It may strengthen it if the sign is identical to either of them.

The ruler of your Ascendant is in the same sign as your Sun. This specific feature means that the Sun's characteristics in sign previously delineated are strengthened.

### **Aspects to your Ascendant**

Several planets form an aspect with your Ascendant, Yoko Ono. Therefore, in their specific way, they modify your behaviour and your personality, which do not take on the pure characteristics of your Libra Ascendant only, but which are a blend of its characteristics with those of the said aspects.

★★★★☆ Saturn trine Ascendant, orb 1° 13'

Saturn is in soft aspect with your Ascendant, Yoko Ono. This harmonious configuration brings about a responsible, loyal, persevering, and patient behaviour, and in a word, reliable. Your seriousness is

appreciated, and owing to your capacity to easily analyse situations, you come across as a sincere and trustworthy person.

★★★★★ Moon sextile Ascendant, orb 2° 37'

Your instinct seldom misleads you, as far as your external appearance is concerned, thanks to the Moon's soft aspect with your Ascendant, Yoko Ono. You keep your emotions under rather good control, in instinctive and smooth ways.

★★★★★ Venus trine Ascendant, orb 5° 16'

Thanks to Venus, Yoko Ono, your behaviour is in harmony with your affective life, and you need not make any special effort in order to express your feelings in a natural way and without arousing people's criticisms. This asset enhances your natural easiness and charm, which is definitely not unpleasant!

★★★★★ Mercury inconjunction Ascendant, orb -0° 36'

Sometimes, you find it hard to behave the way you wish, Yoko Ono. It is because of Mercury who is not really in phase with your Ascendant. You happen to dislike the way you communicate, either because you exceedingly intellectualise everything, or on the contrary, because you do not make the effort to thoroughly analyse the situation when you are with other people.

★★★★★ Neptune semi-sextile Ascendant, orb -0° 34'

Neptune in soft aspect with your Ascendant endows you with a sharp intuition which enables you to instinctively adopt the behaviour which your entourage appreciates, Yoko Ono. You have the natural flair which prevents you from making errors of judgment on people. You understand the crowd, and you have the good reflexes for being well-accepted by all.

## Your Sensitivity

Your nature is optimistic and emotional, Yoko Ono, and you are caught up in two incompatible longings: you are fond of exoticism and independence of movement, but at the same time, you feel comfortable in a form of middle-class attitude and conformism; in general, it translates into a succession of moods, now quiet and well adapted to the situations you experience, now marked by an irresistible desire for change and revival. You have a good and naïve nature, with a lot of self-confidence. Your emotionalism prompts you to live intensely a variety of numerous emotional experiences, a bit scattered, but with all the stimulations you need to be a balanced person. Your pleasant and welcoming attitude wins you some degree of popularity, all the more so because, despite your thirst for adventures that may scare away some people, you adjust to your environment's customs so easily.

Lively, even restless sometimes, Yoko Ono, your thoughts are roaming, prolific, fluctuating: you are interested in many things and your “Jack of all trades” side is part of your charm, even if you have difficulties in concentrating and completing what you start.

Your emotions are particularly active during your contacts and your frequent travels. You almost chat too much sometimes, mixing practical and affective matters, often changing your mind. However, you are very intuitive when it comes to instantly grasp the personality of the person you are dealing with. If you are a journalist or a writer, you probably have chosen the best direction for you! Relations with females are usually favoured, or at least, they are numerous and intense.

### ★★★★☆ Moon square Neptune, orb 2° 03'

This Moon-Neptune dissonance wonderfully turns on the poetic soul, the exhilaration of feelings and dreams... and disturbs your practical life, as well as the management of contingencies. You do not lack inspiration but your reasons of living may be beyond your entourage's understanding! Bohemian life is pleasant but it is probable that you experience muddled situations. Your aims are noble and your intentions are very good. But you may not have the will to turn them into reality. It is important that you are wary of artificial paradises: escaping in the imaginary is not necessarily the best solution for problem solving. You are in search of an inaccessible tranquillity and you tend to procrastinate chores. Nevertheless, facts remain present and you may see that non-interventionism can only increase your difficulties. You must put an end to this vicious let-go circle. This does not imply that you have to forsake your dreams or to repress your very rich sensitivity.

### ★★★★☆ Moon sextile Saturn, orb -1° 23'

This harmonious Moon-Saturn aspect is an element of stability for your private life. Your daily life lives up to your demands, you are totally true to yourself and logical through your very intimate behaviour. You do not choose the easy way out: on the contrary, it is in difficult situations that you are at your best. It is very unlikely that you become destabilized by trifles. This aspect indicates stability and also perfectionism. You are longing for a private life respectful of your heart of hearts and your genuine desires. Your well being is at this price, and its quest remains perpetual. Despite your reserved private behaviour, your emotions run very deep. You have a strong need for protection and for security. Your aspirations lead you towards contemplation or studies, more than towards social futilities.

### ★★★★☆ Moon square Mars, orb -3° 59'

This Moon-Mars dissonance suggests touchiness and sometimes, aggressiveness. You are irascible and very sensitive to all sorts of threats and dangers. You react very quickly, too hastily. To protect your well being, you must learn to control your mood, to coordinate your actions and to balance your opinions.

You are often disturbed by plain facts: either you seek refuge in your intimate realm and refuse to face the truth or, on the contrary, you are engaged in altercations, which forbid all tranquillity. It is important that you balance these two tendencies and that you alternate moments of action with phases of carelessness and relaxation. These two attitudes are relatively irreconcilable.

★★★★★ Moon sextile Venus, orb 2° 39'

The harmonious Moon-Venus aspect is an element of intimate balance that favours sensual and affective fulfilment. The search of well being includes all kinds of emotions and feelings. You love, you enjoy life in simple ways and you arouse your entourage's affection. The persons belonging to your inner circle are also objects of desire and pleasure. Tenderness and love are probably one and only thing: you are moved by the gestures of affection provided to you and by the daily acts, which strengthen two persons' mutual attachment. Whereas other people dread routine, in your case on the contrary, it increases your amorous feelings. You loathe all kinds of violence, particularly in your intimate life. The danger of this planetary configuration may be your constant changes of mood: whims are often on the agenda... and your will is quite weak. One last point: this aspect is frequently found in the charts of people with an aesthetic or artistic sensitivity.

## Your Affectivity

In your chart, the Sun and Venus are both in Aquarius. The nature of your affectivity is most unusual and off the beaten path. You are an idealist to your fingertips and you dream of a sentimental life that is renewed each day with excitement and amazement... It may be necessary that you restrain your heart impulses and that you get back to a cold and inflexible reality. Under any circumstance, you find reasons to hope for a blissful future, to magnify and to idealize your relationship. Being in love with you is not exactly restful, since you need to esteem and to admire your partner. You display an unlimited generosity but you may also be intransigent when you start losing your illusions. Your affectivity is demanding and cannot be satisfied with approximations. Your strength lies in your ability to be moved and amazed by your partner. You do not see his flaws, you do not listen to the criticisms he may be the target of and you allow yourself to be intoxicated by your passion. Later on, the idyll transforms into friendship and the amorous relationship, into fraternity. But the magic of the first moments never fades away, because love is yet to come.

In love, you are more cerebral and friendly than really passionate, Yoko Ono. You are made for amorous friendships, for refined and light feelings where each partner retains one's freedom, and almost detachment, without getting really committed. Sometimes, you may be distant from, and indifferent to, love matters for a while, because you can be completely engrossed in original intellectual pursuits and the collective atmosphere which you are so fond of. You substitute a great number of friendly and light contacts to amorous relationships and it is fair to say that they satisfy you. To fall in love, you need spice and a partner who is original, who amazes you and whom you admire; under such conditions, you can freely express your feelings in an ambiance devoid of constraint, where freedom is perfectly respected and shared within the couple.

Yoko Ono, your Venus has a natural affinity with this house. She feels very comfortable and she gives her best in terms of intensity of feelings, artistic creativity, inclination for leisure, entertainment, fine arts and music gifts and even, the capacity to easily communicate with children. With Venus in this house, more than in any other position, the affectivity is increased and endows you with an active and enterprising

attitude, in this area of life. Creativity is associated with the 5th house and Venus here allows you to blend pleasure and motivation, not only in the field of artistic creation and entertainment, but also in love, where you are prompted to fearlessly create or to actively develop romantic relationships with the elected person. Besides, you are particularly at your best here, more ready to extend extreme kindness, warmth or seduction than in any other of your daily activities. However, the danger with this position is to fall prey of your own great ability to please, to seduce or to enjoy yourself, be it through romantic dissipation or through sheer pleasure to shine.

★★★★★ Venus conjunction Saturn, orb 4° 02'

You favour deep feelings and a sincere affective life. In love, you are not content with shams or uncertain compromises. Your couple's relationship is based on mutual trust. You strive to build a lasting link, a true love that complies with your aspirations and your heart of hearts. This harmonious Venus-Saturn aspect indicates wisdom. Inexpressible truth is preferred to appearances. A love affair is an adventure, above all. Discovering the other one, step by step... any relationship takes a fundamental dimension right away. It is relevant to mention a little puff of romanticism and a passionate nature, although quite modest and reserved. You do not commit yourself thoughtlessly! This is a major asset for long lasting love. You are able to question your affective behaviour and to adjust to your significant other. You handle crises quite well and you overcome all the difficulties inherent to amorous rapports.

★★★★★ Venus inconjunction Mars, orb -1° 2'

This Venus-Mars aspect indicates a sensitivity all on edge and an impulsive character. Emotions and heart impulses cause a marked tension. Life is an affective battlefield. Love is omnipresent but often fragile: impulsiveness reigns over the realm of feelings. The object of desire may become irresistible and implacable, or the sense of confrontations prevents affective tranquillity. However, the richness of your emotional responses is to be noted: you are more inclined than others to be guided by amorous fevers and you live intense passionate experiences. Your overwhelming impressionability must be contained. Romantic people seldom enjoy tranquillity!

★★★★★ Venus bi-quintile Jupiter, orb -0° 54'

Charm and seduction are your assets. This harmonious Venus-Jupiter aspect favours your affective fulfilment and your sentimental well being. You earn your entourage's sympathy thanks to your conciliating sensitivity, your desire to please and your behaviour in society. In many circumstances, you arouse esteem and consideration – essential values to you. You like social whirls, life in society, the aesthetics and the arts. You often tend to look for the easy way out in your business and your affective relationships. You are known as a complacent person. However, your amorous commitments may be quite superficial. It is important that, without breaking the spell, you opt for a more genuine attitude, respectful of your essential desires. As we all know it, love cannot be bought. An indication of balance: because you are aware that compromises are necessary for a love affair to endure, better than anyone else, you know how to maintain harmony in love.

## The Way You Take Action and Your Sexuality

Yoko Ono, you skilfully make use of your energy and you are like the arrow that reaches its target with great precision: with piercing eye and sharp mind, you take action meticulously and efficiently. Like the surgeon with his scalpel, you know exactly what you want and you belong to the category of specialists, not the generalists. Critical, pernickety, extremely organized, you want to foresee and to analyze. You

prefer to master your business too well rather than not enough, even if you must put a huge, sustained, long lasting effort into it. Sexually, you remain fanatical about cleanliness. You may be prone to fantasies such as fetishism. Your love life is fine if you avoid the unforeseen events that you loathe.

As strange as it may seem, Yoko Ono, to you, action means behind the scenes and secrecy. The form of your action is important, as compared to what you actually do. You want no publicity on what you are doing and the reasons of your struggle!

You loathe being seen when you are on the move. You have the uncomfortable feeling that you are spied upon, that people may judge you. Or you are afraid to displease others. You enjoy taking action in the dark. You may be dedicated to charitable causes, and it is natural to you that you must focus your energy on them.

Humanitarian works, secret settings (hospitals, prisons, convents, etc.), remote and forgotten places (charity missions operating abroad, etc.) constitute privileged settings for the expression of your capacity for action (and for devotion), that is as strong as anybody else's, although it is marked by these quite peculiar characteristics.

Struggles may crop up in the guise of hidden pitfalls and enemies: you may have to fight in some secret ways, in order to face these dark events. It is an art which you master quickly and which enables you to triumph over adversity, more often than not.

#### ★★★★★ Mars conjunction Jupiter, orb 5° 34'

Coordinated action wins over almost all obstacles! You mobilize your energy and your fighting spirit advisedly and you take timely action. This is the reason why you are efficient in situations requiring courage, determination, swift responses and diplomacy, altogether. You do not fear confrontations but you never provoke them unnecessarily. You take advantage of your chances and you adjust your behaviour to concrete situations. You empirically handle events with relevance. The only danger is that you may be overzealous to seize any opportunity... even those that are not necessarily good in the long run. You should take the time to carefully consider the facts and their consequences. The swiftness of your reactions must remain an asset.

#### ★★★★★ Mars conjunction Neptune, orb 6° 02'

This harmonious Mars-Neptune aspect is a signature for the missionary or the inspired activist. You are guided by an irresistible and implacable ideal. Exaltation may border on sacrifice for the sake of the noble or rebellious causes that inspire your struggles and your actions. Far from intellectual speculations, you need to live through your passions, to take action and to let yourself be carried away by a mission, an ideal or sometimes, an illusion. Indeed, you may be a Don Quixote fighting windmills, dedicating all your energy to an indefensible or a fanciful cause. More often than not, your commitments are courageous, even heroic. And the faith you display turns perilous enterprises into feasible projects. You can successfully implement actions that are considered doomed to failure by others.

#### ★★★★★ Mars bi-quintile Uranus, orb 0° 34'

This harmonious Mars-Uranus aspect indicates an unshakable determination and the will to further your ideas through drastic, sudden, sometimes dramatic actions. You bend the string of your bow before taking action and you hit at the right time. The secret of your feats? An excellent command of your blitz actions. You concoct your plans in the dark, and then you move to an efficient and quick execution step

that is often dazzling. You do not have the temperament of a loser. When you face an ordeal, you focus your entire energy and will on your unique aim: victory over any obstacle. This planetary configuration may lead to dangerous, even heroic actions. The danger is that you may over-estimate your strength or your chances for success.

★★★★★ Mars bi-quintile Saturn, orb 0° 36'

Persistent action always bears fruit eventually. All that is needed is patience... A quality you have, undoubtedly. As confrontations become unavoidable, you show strong persistence and indisputable perseverance. Potential obstacles are more stimulating to you than they are discouraging. You are naturally fit for effort and for confronting realities and facts. You quickly overcome difficulties and you respond to crises in an efficient and considerate manner. You are enduring. You handle events with rigour and precision. These are valuable qualities nowadays, for they often come with the capacity to undertake adventurous experiences and to take limited risks!

## Your Intellect and Your Communication Style

Your thinking process works on a rather instinctive and intuitive mode, Yoko Ono. You “feel” more than you understand, as if your reasoning were not active. Your strong receptivity and your natural empathy make you an understanding, pleasant, warm and benevolent person although you may be neglectful, even heedless. You are shy and anxious and you prefer to withdraw and to isolate yourself in a quiet place in order to give free rein to your inspiration, rather than to assert yourself. Despite your lively imagination, it may be hard for you to get out of the flow of your mystical and irrational thoughts, with the result that you become even more worried and impressionable. You must develop your logic, rational mind and your willpower, so as to gain self-confidence and creativity. Try and see...

Your thoughts, Yoko Ono, are irresistibly attracted to hobbies and entertainments, or you may be particularly oriented towards creation if you are dealing with something amusing.

Your way of communicating is often pleasant, charming, you are the type who blends humour and charm in your speeches and who can spend many hours telling about your hobbies and detailing them with fire. This state of mind is favourable for love affairs or children's education. Your playful spirit often amazes children.

★★★★★ Mercury opposite Neptune, orb -1° 11'

With this Mercury-Neptune dissonance, relations may be distorted by the mirages of sensitivity. You have to make an effort to keep your objectivity. If this aspect is not well integrated, it may harm your good evaluation of human stakes. Your intimate beliefs may limit the dialogue, as if a very specific sensitivity prevented true communication. It may be difficult to find the right wording to express fragile and ineffable experiences. Imagination in power is not easy to share and the poetry of your speeches may be beyond your audience's understanding!

★★★★★ Moon square Mercury, orb -3° 14'

The Moon suggests relaxation, whereas Mercury implies a discoverer's mind. They both make sense and each one requires special attention, as they are sometimes upsetting. This Moon-Mercury aspect is likely to bring about nervousness or instability. Nervousness stems from the multiplication of your spots of interest and the perpetual restlessness of your mind, which prevents relaxation and well being from



settling in. The outside world constantly appeals to your attention and you shift from one issue to another, to the detriment of your tranquillity. Therefore, it is important that you find the balance between two antinomial attitudes: letting-go versus curiosity, tranquillity versus communication. The new persons you meet with are not necessarily trustworthy and there is no certainty that the contact is harmonious. It is important that you use both influences alternately.

★★★★★ Mercury opposite Mars, orb -7° 14'

This Mercury-Mars dissonance brings about impulsiveness into relationships and contacts. Your sense of controversy and criticism leads to blunders and thoughtless actions. Your verbal violence may harm the efficiency of your actions. You certainly display your views without circumlocution. Your straightforwardness would be commendable if it did not cause those blunders that spoil many situations. It is important that you learn to control your decisions, to coordinate your mental abilities and your fieriness, so as to fully express the quickness of your mind and of your action. Learn to count to ten before you say anything, as it is an excellent exercise for you!

★★★★★ Sun conjunction Mercury, orb 8° 3'

You know how to play with your image, how to give multiple representations of yourself. A precious asset: you are sensitive to other people's opinion and you adapt yourself to the audience. Of course, there is a "show" side in your manner that may prevent perfect cohesion. But that's the other side of the coin, for an extraordinary capacity to discover. This aspect translates into an acute sense of observation, an intense desire to learn and to bring everything to light. You strive to be informed in many circumstances, to understand the machinery of the world surrounding you, particularly regarding all human topics. And you will change according to that information and the knowledge gained. You have the chameleon's adaptation powers. And its vulnerability, as well.

★★★★★ Mercury sesqui-quadrate Pluto, orb -1° 15'

Forget simplicity! You definitely enjoy acting behind the scenes and dealing with what is going on underneath. You play games and you operate in the dark. You leave the front of the stage to others and to the gullible ones. You don't display much sociability. When you are nice, it is because you are looking for flaws. This Mercury-Pluto dissonance mingles unconscious fantasies with reality. When it is kept under control, this aspect becomes an unparalleled source of discernment. To that aim, you must overcome your strong tendency for provocations. It is certainly amusing to play destabilizing games but it may also be dangerous. Keep this treatment for your opponents only.

## Your Goals, Motivations, Career, and Destiny

### Your Sun is posited in the 5th House

Yoko Ono, your main motivations and your will lead you towards activities related to creation or to the outwards expression of yourself. It may take the form of the mobilization of your energy aiming at artistic, literary or technical creations and works, innovative projects design, or symbolically, projecting yourself into your descendants: creation via procreation...

You are usually very sociable, warm, honest and straightforward, but sometimes inflexible and you are interested in leisure under all its forms. Love pleasures, firstly, but also outings, parties, games (gambling and other amusements), and all kinds of activities containing a part of risk that can increase

your adrenalin level! You loathe anything that is too solemn and too serious in general and you prefer the authenticity of the present to intellectual meditations that seem too static to you.

Your will to please is very strong and you can shine in the love area. Since the recreational world is linked to that of children, you easily deal with them. When you become a mother, one of your major goals is to dedicate yourself to their success. You are able to dedicate an amazing amount of time to their education and you succeed in that field better than anyone. Besides, you have the knack with children and everyone envy you!

One never gets bored in your company and you have loads of hobbies and occupations that are out of the ordinary. You are creative and playful, to a point that may border on fanaticism. Try to avoid role-plays or casinos that take up so much of your time... Be also wary not to surround yourself with sad or austere people who may not find you serious enough!

You spend too much energy in entertainment activities and you may lose sight of your real interests. If you listen to your instinct rather than to your reason, you take the risk of missing a few dates with your own success: you must sometimes put fun aside and force yourself into solemnity, in order to become more efficient and to achieve your goals more quickly. It is also likely that you face problems within the circle of your friends.

### **The ruler of your chart is in the 5th House**

The ruler of the Ascendant, also referred to as the chart ruler as explained in a previous chapter, is also posited in one of the twelve Houses of the chart. Just like the Sun in his House, the ruler of the Ascendant provides certain abilities, or it makes you appreciate more keenly certain areas of life.

The ruler of your Ascendant is in the same House as your Sun. This specific feature of your chart strengthens the Sun's characteristics previously delineated.

### **Aspects influencing your ambitions**

Regarding your destiny or your career, the following aspects of your natal chart allow to fine-tune what has just been said above:

★★★★★ Mercury trine Midheaven, orb 1° 31'

Mercury in soft aspect to your Midheaven enables you to easily communicate with your entourage and to climb up the social ladder, Yoko Ono. Your strategy is often good, and you correctly think about your interests. Do not change anything!

★★★★★ Neptune sextile Midheaven, orb -0° 2'

Thanks to this soft aspect of Neptune to your Midheaven, Yoko Ono, your intuition is very sharp, as far as your possibilities for success are concerned. Thus, you have no difficulties in finding your professional or social path, and your nose tells you whether something is good or not for you, even before you start to analyse it. Your imagination and your visionary qualities accompany you along your journey towards success.

★★★★★ Saturn inconjunction Midheaven, orb -0° 19'

Saturn is in dissonance with your Midheaven, Yoko Ono. Of course, nothing really serious is to be feared. It is just that sometimes, you feel that an unfair slowness keeps on delaying the achievements you deem that you deserve right now. You must work twice as hard to climb up the rungs of success, and above all, you must not get disheartened. Effort is one of the values you must work on, and it is a punishment by no means. It is obvious that your goals are achievable, but you must remain on the right track and show perseverance. That's all!

★★★★★ Moon inconjunction Midheaven, orb 1° 43'

There is a dissonance between the Moon and your Midheaven, Yoko Ono. It may indicate a discrepancy between your sensitivity and the goals you set for yourself in life, although this dissonance seldom plays out dramatically. You may feel that your emotions sometimes catch you off your guard in society, and that the level of your popularity is not too satisfactory, without your knowing the reasons why. In some cases, females may thwart your social ascent.

★★★★★ Mars sextile Midheaven, orb 5° 42'

Your energy serves your professional goals and your social ascent in general, Yoko Ono. This beneficial aspect of Mars to your Midheaven endows you with strong dynamism, and it rewards your sustained and efficient efforts. You enjoy taking action, and your results are gratifying most of the time.

★★★★★ Sun opposite Neptune, orb -9° 41'

If this Sun-Neptune dissonance is not well integrated, it may bring about confusions and errors of judgment. It is the signature for Don Quixote in search of chimera, pursuing impossible dreams. Your intuitions may lead to an incorrect estimation of facts. Bohemian life is certainly pleasant. But it is often necessary to remain realistic, lest to be exposed to delusions. Carelessness and letting-go is not suitable. In order to properly integrate this aspect, you must control the possible drift of a wandering and fabulous sensitivity. This aspect favours poetic and romantic inspiration. But you must not let it rule your concrete actions. It is important to allow your intuitive capacities to be fully expressed while keeping a lucid mind, simultaneously.

★★★★★ Jupiter quintile Midheaven, orb -0° 42'

Jupiter is in soft aspect with your Midheaven, Yoko Ono. It means that you are often lucky, or that you receive support in your career or your social destiny. You trust your abilities to overcome obstacles coming up in your way, and you respect authority and laws. So, thanks to this configuration, you make your way in the world with the feeling that you move forward rather quickly, as compared to average people.

## Your Assets and Your Part of Joviality

The major asset of the planet of Greater Fortune in your chart, Yoko Ono, is the increase of your practical sense and of your capacity to create order in your surroundings. You progress easily in your activities, and in most cases, you are efficient, useful and cautious. The danger may be that you do not put yourself at the forefront to reap the rewards of your efforts, especially if the rest of your chart indicates a tendency for introversion or a lack of self-confidence.

Although Nature's nudge in the right direction is not spectacular here, Yoko Ono, it is very real, nonetheless. Your sense of dedication, your generosity, and your compassion are developed to such an extent that they often enable you to happily find fulfilment in non-mediatized areas such as humanitarian work and charities. Your human qualities are strongly favoured when you strive in obscurity, discretion and silence. Your reward is a life that is rich and not limited to material contingencies.

The planet Jupiter symbolizes expansion, broadness and generosity. Jupiter is associated with the functions of synthesis, enthusiasm and optimism. In your natal chart, his house position is more important than his sign position because, like Saturn, Uranus, Neptune and Pluto, he is a slow planet. Many people born in the same period have Jupiter in the same sign. This is the reason why the sign occupied here is less meaningful than when it is occupied by the so-called fast planets, i.e. the Sun, the Moon, Mercury, Venus and Mars. Therefore, some caution is to be exercised as you read what follows.

Jupiter in Virgo gives you a talent for work, for practical activities and a higher than average dexterity. You have a strong sense of duty. You are very appreciated in your work environment because you are a perfectionist. The Tradition underlines that all the fields related to health and physical wellbeing are favoured.

## Your Serious Side

Solemnity and concentration are at the service of your projects and your altruistic ideals. To the detriment of your own individuality, you become demanding with time, and you learn to better define the human values that are really important to you. Struggling in order to better assert your individual qualities can be highly profitable.

Yoko Ono, you worry when you are at home, in private. You may feel, wrongly usually, that your family does not love you, that they do not understand you, that you are lonely, and that your father is too strict.

You are often attached to the past and to painful souvenirs. Your challenge is to understand that the present can become light and pleasant and that the burden of your sufferings comes from your own doubts and not from your family environment. If you succeed in doing so, you will win on all counts since, at the end of the day, you become responsible, stable and... happy at home!

The planet Saturn symbolizes contraction, effort, time, limitation and concentration. Saturn eliminates anything that is not authentic, sooner or later. It is impossible to cheat him as he gives an irresistible desire to form a coherent whole with oneself, in responsible and wise ways. He is the great purifier. He represents our limitations but also our truth. In your natal chart, the house position where Saturn is posited is more important than his sign position because, like Jupiter, Uranus, Neptune and Pluto, he is a slow planet. Many people born in the same period have Saturn in the same sign. This is the reason why the sign occupied here is less meaningful than when it is occupied by the so-called fast planets, i.e. the Sun, the Moon, Mercury, Venus and Mars. Therefore, some caution is to be exercised as you read what follows.

Saturn in Aquarius endows you with the capacity to deliver in collective areas, humanitarian causes or avant-gardist projects. Your sensitivity is withdrawn but it is offset by your ability to handle human relationships in a daring and efficient way, which allows you to achieve your goals for the sake of a cause.

## A Few Special Points

### Your Uniqueness and Your Utopias

Your anticonformism regarding relationships prompts you to meet with very original people, and sometimes quite special ones. You may take the initiative to brutally and unexpectedly break up with persons whom you find too ordinary or too conventional.

Your thirst for freedom creates a very strong individual approach in your way of communicating and of handling relationships; you may distrust associations or marriage because, as soon as you start to feel imprisoned or not free enough, you run away without warning!

Actually, you are very demanding, and you are not aware that, most of the times, this is the very cause of your behavioural reversals. The solution is to move around with unusual people, it's as simple as that! Cohabitation is often advisable, except if your freedom and your curiosity are already satisfied on a daily basis.

### Your Inspiration and Your Illusions

As soon as you are within a group or you are involved in a project, your attitude becomes quite peculiar. Instead of asserting yourself and differentiating yourself, you strive to completely merge into the group because you do not intend to impress or to be set apart. The danger may be that you lose your identity or that you are abused and deceived by the group, or by one of your friends who is a group member.

In general, because of your feelings and your strong intuition, you have a good capacity to become integrated and to slowly gain self-confidence in group settings.

The same holds true for your friendship life. You tend to fuse, to be totally devoted, and to adjust with flexibility to your friends' personality. However, it is hard for you to assert yourself, and you may wrongly be considered as lacking in conviction, although not a weak person.

### Your Passion and Your Authority

Your career, and more generally, your entire destiny, is challenged in many instances. You are individualistic, and you do not hesitate to forcefully provoke events, but often, external facts, totally beyond your will, are the causes of major disruptions in your life.

Your strong ambition prompts you to use your instinct of domination over people and over things... Towards that aim, you cannot help it, you have to trigger crises that invariably bring about transformations around you and within you. And this is exactly what you unconsciously wish for.

In your professional world, you are respected and even feared. It is up to you to be careful not to overstep boundaries, if you do not want to bear the consequences of this transforming agent that is inherent to your destiny.

Symbolically, the Tradition indicates that your mother is very probably domineering and authoritarian – at least, in your opinion - particularly during your childhood.

## Your Isolated Planets

In general, the ten planets of the chart are connected to other planets by major or minor astrological aspects. It is owing to those ties that the planets' energies can manifest in the chart owner's personality and play out within safeguards according to a specific tonality.

It seldom happens that in a natal chart, a planet is totally disconnected from the nine other planets.

Astrologers have observed that when such a case occurs, the person feels the energy of the unaspected planet in quite a singular way, very jerky and powerful at the same time. Thus, for instance, the famed astrologer Jean-Baptiste Morin de Villefranche wrote that "an unaspected planet heralds that something strange or extraordinary will take place regarding the meanings of the house in which the said planet is posited" (source : l'astrologie selon Morin).

Rules for detecting an unaspected planet: among all the testimonies that we have reviewed to this day, based on our experience, we tend to agree with American astrologer Janis Huntley who accepts seven aspects, which involve the zodiacal twelve sections of 30 degrees. The aspects to be considered are the conjunction (0 degree, cooperation or tension), the semi-sextile (30 degrees), the sextile and the trine (60 and 120 degrees respectively, aspects of cooperation), the square and the opposition (90 and 180 degrees respectively, tensed aspects), and the quincunx (150 degrees, slightly tensed). In this detection, the chart's angles are not taken into account.

In any case, it is important to remember that an isolated planet clearly expresses its influence when it is a personal planet. Thus, when the Sun, the Moon, Mercury, Venus, or Mars is isolated, it is certain that the effects described by Jean-Baptiste Morin de Villefranche will become manifest. As for Jupiter, Saturn, Uranus, Neptune, and Pluto, one must be cautious because the volume of cases documented is not yet large enough.

Your chart has no isolated planet, and this particular case does not apply to you.

## Annex 1: Your Minor Dominants

The five following dominants are less significant than those described at the beginning of your report. They may not be strongly felt. In some cases, they add several minor details to the analysis of your character, but they are rather for curiosity purposes. It is not necessary to take them into account when you first read your portrait.

### Your Planetary Repartitions: Northern, Southern, Eastern and Western Hemispheres

The axis linking the 1st house's cuspid (the Ascendant) to the 7th house's cuspid - the Descendant - divides the zodiac into two bowls, a superior bowl, in the South, and an inferior bowl in the North. Quoting an expression by the famous American astrologer Rudhyar, the Southern part and the Northern part correspond to two functions: "being" and "doing". Other concepts are also associated with this North and South distribution, such as introversion - Northern hemisphere - and extraversion - Southern hemisphere - being or appearances, inner life or external life, reflection or action, dreaming one's life or living one's dreams, the abstract or the concrete, backstage or limelight.

This is not about determination but about personal inclination: thus, some people will be thrown into public life despite a prominent Northern hemisphere. If this happens, however, it will not be due to their will, their taste or their deep nature. Conversely, a prominent Southern hemisphere will not bring about a famous destiny to its owner, even if he tends to turn the spotlight on himself, or if he looks for a more active life. It is a matter of deep nature and natural inclination. Of course, none of the typologies is "superior" to another.

In your birth chart, Yoko Ono, the ten main planets are distributed as follows:

### Your Northern and Southern Hemispheres



Yoko Ono, the predominance of planets in the Northern hemisphere prompts you to reflect and imagine rather than to exteriorize your actions and to be at the forefront of the stage. So, should you wish to remedy this situation, it is up to you to force your nature to take action in broad daylight, to communicate, and to assert yourself... then, you can move forward in this concrete life and enjoy your newly won situation.

The birth chart is divided into two other parts, Eastern and Western, by the axis linking the Midheaven

to the Imum Coeli.

The Eastern part, on the Ascendant side, shows the person's ego, will, magnetism, and vitality, whereas the Western part, on the Descendant side, symbolizes other people, communication, relationships and their influence, as well as flexibility and adaptability.

Yoko Ono, here is the planetary repartition in your Eastern and your Western hemispheres:

### Your Eastern and Western Hemisphere:



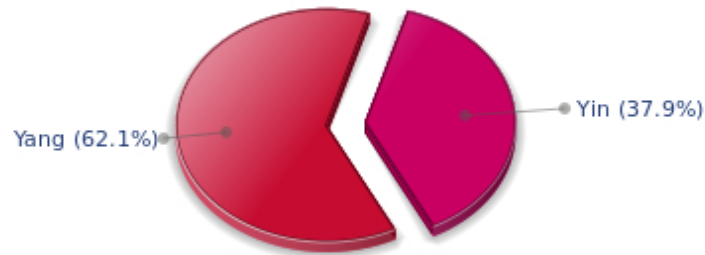
Yoko Ono, the East and West sides are well balanced in your chart. This means that you are not too determined or authoritarian, and that you are neither impressionable nor fragile. You are capable of taking decisions, in full awareness, without anyone's help when circumstances so require. However, you have no problem taking your entourage's viewpoints into consideration, with tact and intelligence.

### Your Yin and Yang Polarity

The twelve signs are divided into two polarities, called active or passive, or sometimes masculine and feminine, positive and negative, Yang and Yin. This classification corresponds to two quite distinct tonalities, the first one bringing extraversion, action, self-confidence and dynamism, the second one, introversion, reactivity, reflection and caution. None is superior to the other, each group has its own assets and shortcomings. Odd signs - Aries, Gemini, Leo, Libra, Sagittarius and Aquarius - belong to the first group, whereas even signs - Taurus, Cancer, Virgo, Scorpio, Capricorn and Pisces - belong to the second group.



## Your Yin and Yang Polarity



According to the disposition and qualities of your planets and angles, you are rather influenced by Yang energy, the active polarity, Yoko Ono: more concerned about actions than reflection, you sometimes rush without standing back and without the deepness that is needed. However, your spontaneity prompts you to take fresh starts, even after repeated failures caused by your rashness.

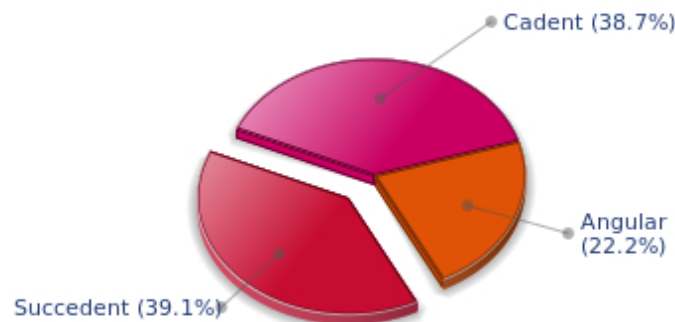
### Your Houses' Accentuations

Houses are split up into three groups: angular, succedent and cadent.

The first ones are the most important ones, the most "noticeable" and energetic houses. They are the 1st, 4th, 7th and 10th houses. Their cuspides correspond to four famous angles: Ascendant for the 1st house, Imum Coeli for the 4th house, Descendant, opposite the Ascendant, for the 7th house and Midheaven for the 10th house, opposite the Imum Coeli.

Planets are evaluated according to a whole set of criteria that includes comprehensive Western astrology rules. At their turn, planets emphasize specific types of houses, signs, repartitions etc., as previously explained.

## Your Houses' Accentuations



The emphasis is on succedent houses in your chart, namely, the 2nd, 5th, 8th and 11th houses, Yoko

Ono: this configuration usually endows a personality with affective and sensitive qualities. Obviously, to the detriment of self-confidence or self-assertion, but your heart qualities may be very important. These houses also favour realization. Time and patience are part of their characteristics. However, they are only indications and you must include them in the rest of your chart in order to see whether they are validated or not!

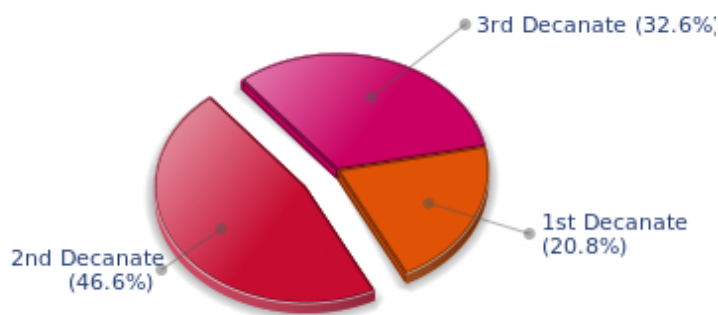
### Your Esoteric Decanates

Each sign contains 30 degrees and can be divided into three equal parts: the decanates. The Tradition indicates that specific meanings can be associated to each of the three decanates. Their sphere of activity is usually limited to the Sun sign, however, it is even more interesting to observe the distribution of all the planets in the chart to get an idea of the respective importance of the three decanates, which can complement the description of the personality.

These meanings must be considered with the greatest caution. Indeed, they are minor characteristics that can only underline other outstanding traits of character.

Traditionally, the first decanate highlights the characteristics of the sign where a planet is located. The two other decanates correspond to sub-dominant planets, depending on the nature of each sign. This system leads to a multiplication of meanings and it is impossible to have a clear understanding: here, we prefer to give only the meaning of one decanate in comparison with the other two, within the birth chart as a whole. Again, the greatest caution is needed with regard to this minor indication as it is not always reliable: it is not essential that you read these texts in the beginning. You can get back to them later on, once you have read more important interpretations

### Your Esoteric Decanates



The second decanate, which means the part between 10° and 20° of any zodiacal sign, prevails in your natal chart, Yoko Ono: these 10 zodiacal degrees emphasize logical thought and mental values. Therefore, you may be drawn to some kind of scientific activities, research, writing or any sort of expression where you have to... think a lot.

## Annex 2: Karmic Study

The karmic theme is a good complement to the psychological portrait, or natal chart. This analysis is based on the positions of the Lunar Nodes, the Black Moon and the Part of Fortune: they are also called fictitious points and describe the spiritual purpose of your destiny. Because there is in all of us an experience and a quest, our life is an evolutionary journey... provided that we head towards the right direction, of course! Indian astrologers highly prize the Nodes axis (North Node and South Node). It is the Ariadne's thread that we are invited to follow. The Black Moon indicates the sector where we are most likely to transform or to transcend, whereas the Part of Fortune points out the area where we can easily express our specificity.

### The Lunar Nodes: a spiritual path

Lunar Nodes have their roots in the Indian tradition and they are based on a simple concept: each of us have a mission of their own, here on earth, a destiny, a course. According to the Indian philosophy, life is a school: the nodal axis describes our past experiences (South Node, our karma, our spiritual inheritance or our previous lives), and our aims on earth (North Node, our Dharma, the purpose of our current incarnation). This is the reason why the study of the lunar nodes is called "Karmic astrology". Here, we shall not step into hypothetical past lives. Wherever our current trends may come from, all that really matters is that we become aware of the purpose of our life, its finality and our dharma. We are likely to understand our life purpose around the age of 37, when the Lunar Nodes return to their natal position.

Your doings indicate the challenge to dedicate an important part of yourself to devotion and abnegation. Life imposes a few sacrifices on you, whether agreed upon (and voluntarily taken up) or imposed by daily vagaries. Very early you showed a sharp critical sense and your attitudes were rational, logical and reasonable, although individualistic. As time goes by, you learn to make concessions and to offer an essential part of yourself so as to outgrow the "every man for himself" principle. Ordeals are meaningful: people may not respond to your games and your entourage may thwart your plans and your ambitions... You may need to achieve the "old souls" detachment, those beings who have learnt that only essentials are to be kept – inner life or survival- and who know that this world "petty things" are vain. Better than anyone else, you cope with situations of crisis because, whatever the circumstances, there is a hidden spiritual dimension and a springboard for evolution. You will slowly get to know the art of accepting things without going back on what you have said or done. Compassion and altruism become the central theme of your life.

You make friends easily and you earn your entourage's confidence and esteem. Very early, you develop an acute sense of fraternal relations, generously receiving and giving. This spirit of mutual aid may lead to a happy-go-lucky attitude that may border on carelessness... As you rely too heavily on friendship, there may be a danger to undergo a few setbacks: idealism and spontaneous dedication may meet with ungrateful reactions or the indifference of the very persons whom you try to help. Your destiny is probably marked with a quest of individual achievement. It is of utmost importance that you create, that you beget a fruit, a work or a child. Little by little, you become independent, without selfishness, but with the strength of those who know that they can only rely on themselves. Do not hesitate to live your dreams to the end and to engender, over and over again. Creation, whatever its form, is the path to your fulfilment. You slowly discover the pleasure to design as you please, without outside interference. It is important that you find an area for your personal expression and, as the poet says, "before the eyes, constantly, night and day, either a great labour or a great love".

## Lilith or the Dark Moon

The Black Moon is the spark of refusal and distance that is dormant in all of us. Depending on the sign where she is found in your chart, she highlights the desire to transform and to sublimate a part of your life. The Black Moon is unfathomable and mysterious. She gives a different dimension to the sector she touches. Her manifestations are subtle; nonetheless, she is powerful, implacable, demanding to the extreme... The Black Moon is also called Lilith. She is the inner flame of your heroism and insubordination.

Twin relations (those that include your fellow creature, your double) are an object of fascination. You are in quest of your soul mate, your identical being rather than your complement... This attitude brings about exaltations and setbacks: you think that you recognize that special one who really resembles you? Differences, however, grow more painfully as time unfolds. But your search of an absolute relation may also become the cement of a close and privileged couple, impervious to life vagaries.

The notion of freedom takes a special meaning: to be free does not only mean being able to move as you please here and there, nor does it mean having a few hours of leisure available. Above all, it means being able to lead a spiritual quest, to access a different dimension in life: to encounter, to travel, to love and to never be hampered by contingencies, never be slowed down by daily life. That'll take some doing! The comfortable routine of the contemporary world, in this regard, puts you off.

## The Part of Fortune in House

The Part of Fortune is a very ancient fictitious point that depends on the lunar phase at the time of birth. The astrological house tenanted is particularly strengthened. In your chart, the Part of Fortune is in the 3rd house: communication constitutes your wealth. You strive to integrate your entourage's experiences, you are in search of a model to follow, of an original ideology or behaviour. Better than anyone else, you can observe your close friends and understand them. Therefore, your destiny hinges on relationships. You can achieve full balance as you make some room for exchanges and dialogues.

## Retrograde Planets

The karmic tradition insists on the issues related to the so-called retrograde planets. They are considered to be the inheritance of a past that was not well experienced, a sort of unfinished business. The interpretations of the retrogradation may seem negative or excessive to you. However, you may relate to a scenario that you have often and repeatedly experienced... as if you underwent several setbacks that all have the same cause. Until the day you become aware of it and you can free yourself from it! Through the slow integration of these planetary energies, you will be able to overcome your difficulties and to pay your karmic debt. Actually, each retrograde planet highlights an opportunity for evolution. Nothing can be achieved without the will to grow spiritually and to defeat your own demons.

Mars is retrograding in your chart: according to the Tradition, this suggests karma of aggressiveness. What does it exactly mean? You may not control your energy, at least during the first part of life. In your interactions with the world, you may not dare to give your reactions free rein. During your childhood, as for all bullied persons, your spontaneousness was smothered. You tend to internalize, even to repress your desires. You chew things over and you fuel your resentments without taking any action... until they explode! Then, your aggressiveness suddenly blows up in an excessive and out—of-proportion way. In itself, martial energy is positive: it allows coping with any given situation. However, the fighting spirit is a virtue only when impulses remain under control. You must endeavour to balance your quarrelsome

tendencies and to respond to provocations without losing your self-control. Do you lack audacity? In that case, force your natural self, be more dynamic, otherwise you may undergo the same harmful outbursts again. It is the only way for you to feel better in your body and in the world!

With Jupiter retrograding on the day of your birth, the lesson is about grasping the opportunities that are offered to all of us but that some people take advantage of, while others don't. Persons who quickly adjust to circumstances are more likely to achieve their ambitions than those who need to be encouraged to take action. During your childhood, you may not have efficiently responded to life's concrete enticements, leaving other "luckier" people to achieve what you were dreaming of. You preferred to enjoy yourself, here and now, rather than to look for new paths of development or exploration. It is possible that you were not optimistic enough. Enterprising minds were alien to you... Later, you find out that, indeed, you give little importance to the credit of the frenzied expansion praised by the modern world. Your path is not oriented towards personal prestige. With subtlety, you integrate non-material values and you accept well the fact that you missed past opportunities.

Neptune retrograding concerns spirituality. You may have expressed early in life a few reluctances about the subtle world of faith. You may have ignored destiny's signs and winks and you preferred to stick to your certainties, to a rigorous and objective control of your life. You dread your own aspirations and you readily trust others': this causes a lack of autonomy and the feeling that you may not receive as much as you give. However, several delusions teach you that you must relativize your calculating and methodical attitude and open up to the irrationality of love in order to find an inner and more spiritual progression. Embracing the invisible is a process that unfolds as years and experiences go by. Your own generosity increases as you become aware of your entourage's generosity.

Pluto retrograde suggests power issues and mishandled relations: for you, everything comes down to power struggles, submission and domination, Machiavellian manoeuvres, including within your couple... The results are complex behaviours and an obsession for the power to influence people. Yet, life teaches that you must simplify your relations and adopt more transparent attitudes and healthier desires... As years go by, you will tend towards more simplicity and you will slowly discover that human energy can, and must, be at the service of the good, or of well being, in compliance with our individual progression.

N.B: modern astrology attaches less and less importance to the principles of retrograding planets.

## Conclusion

A few remarks are needed here in order to allow you to fully take advantage of your astrological portrait: firstly, do not forget that a birth chart is also a photograph of the sky at birth and a structure that not only contains the personality's characteristics, but also its potential evolution.

We all know that, in real life, people begin to know themselves when they are in their forties, or even later. Likewise, several traits of character in a portrait may seem surprising: in most cases, it means that such features are not yet developed.

Some personalities reveal themselves late in life, whereas others are more precocious. It must be remembered that psychological structures are in a state of continuous evolution because they are influenced by unfolding events and gradual maturity. We can never underline strongly enough the "mobile" nature of the personality, throughout a lifetime.

On the other hand, it is difficult to discriminate what is "already present" at this moment in your life when you are reading your chart's interpretation, from what will appear later in the logic of your evolution: you must sort out all the pieces of information provided and, in most cases, you will see that your astrological portrait is helpful for your endeavours to know yourself better.

Finally, several readings of an astrological portrait are usually necessary in order to absorb all its different meanings and to evaluate the relevance of each character trait.

In any case, better self-knowledge obviously contributes to faster personal blossoming, and it is undoubtedly one of astrology's major roles: contributing to know oneself better, in order to improve more rapidly, to deal with one's weaknesses and to avoid its drawbacks, and to take advantage of one's assets as efficiently as possible.

---