



# Vincent van Gogh's Astrological Portrait





## Vincent van Gogh's Astrological Portrait



<b>Introduction</b>	<b>2</b>
<b>Your Planets, Houses, Aspects, and Natal Chart</b>	<b>4</b>
<b>Preamble</b>	<b>6</b>
<b>Your Planetary Repartitions</b>	<b>7</b>
<b>Your Dominant Modes and Elements</b>	<b>8</b>
<b>Your Dominants: Planets, Signs and Houses</b>	<b>9</b>
<b>Your Style, Behaviour, and Peculiarities</b>	<b>14</b>
<b>Your Sensitivity</b>	<b>18</b>
<b>Your Affectivity</b>	<b>19</b>
<b>The Way You Take Action and Your Sexuality</b>	<b>21</b>
<b>Your Intellect and Your Communication Style</b>	<b>21</b>
<b>Your Goals, Motivations, Career, and Destiny</b>	<b>23</b>
<b>Your Assets and Your Part of Joviality</b>	<b>25</b>
<b>Your Serious Side</b>	<b>26</b>
<b>A Few Special Points</b>	<b>26</b>
<b>Your Isolated Planets</b>	<b>27</b>
<b>Annex 1: Your Minor Dominants</b>	<b>29</b>
<b>Annex 2: Karmic Study</b>	<b>33</b>
<b>Conclusion</b>	<b>35</b>





# Vincent van Gogh's Astrological Portrait

## Introduction

To fully benefit from this portrait, we suggest that you read its introduction and its preamble carefully, and then that to take the time to soak up the interpretations of each chapter. Given the large number of texts, which mirrors the human being's complexity, you may need to go through the contents several times, so as to get a good grasp of their meaning and to know yourself better. This will reward your patience.

The purpose of this report is to describe your psychological portrait and to highlight the most fundamental features on the personal area. The report begins with the analysis of your planetary dominants and outlines your personality's general traits before going into further detail. Minor dominants are analysed at the end of Annex 1, for purposes of clarity. Your report then delineates the various facets of your personality:

In general, even when relationships are not involved, we express ourselves and we feel according to our character and our personal motivations: this is indicated by the Ascendant and the Sun sign which both give details on the way we function. They shed a tremendously important light which allows to figure out your personality. Here, we describe your Sun sign (your inner self), your Ascendant (your behaviour as seen by others), and the ruler of the Ascendant (interesting additional pieces of information about the style of your personality). These descriptions alone cover nearly a third or a half of your psychological signature, depending on your natal chart characteristics.

Then, we address your sensitivity, or in other words, the way you receive things and how you express your emotions ; it works as a constant filter for all your exchanges, even when it becomes a more secondary element in your amorous relationship, because at that moment, affectivity prevails. Sensitivity is the way you perceive things, it is your radar, your daily mood, and at the same time, it indicates how you react to your entourage, on a daily basis. It is what others immediately see of you. In the second paragraph, we explain in which areas of life your sensitivity and your emotions are strongest, therefore, where you are most vulnerable.

After this, it is your affectivity, the way you love and how you charm, that comes into play as soon as you fall in love: the first part indicates its basic structure or its main form. The second part describes the areas where it is best expressed and how you display it, according to your personality.

A third fundamental area deals with your mode of action and your sexuality: how you behave, how you manage to obtain what you want, what kind of desires you have. There are twelve possibilities, very

different from one another. The study discloses the specific one that applies to you. In the second paragraph, we explain in which life areas you may most efficiently take advantage of your capacity for action and for conquest.

Your ways of communicating and of thinking are obviously among the major elements that must be integrated into the delineation and the description of your personality. Indeed, they influence your general behaviour and may modify or enhance the image your project (for instance, extraversion may “compensate” a weak affectivity, but a huge number of cases are possible). An additional chapter indicates the favourite areas where you enjoy communicating, thinking and meeting with people.

Besides, we analyze an even more personal aspect that is important to define and understand what may occur within your couple: each of us have a centre of interest, a privileged manner to be fulfilled or to achieve our destiny; this main motivation is indicated by the positions of your Sun and your chart ruler in the astrological houses and we provide you with its detailed description.

A natal chart contains the potential for specific fulfilment and a whole range of assets, protections and qualities. How does the lucky factor manifest in your personality? In which area can you best exploit your qualities? The answers are precisely revealed to you in this chapter.

On the other hand, we all feel in us a part of vulnerability, doubts and fears. How does this part of solemnity or serious side play out? How is it possible to handle it in order to evolve and to get rid of useless elements? All this information is provided to you in these two paragraphs.

Then, you can discover three additional traits of your personality that must be considered as secondary ones. They deal with your predispositions, which means that they need to be triggered by external events because they are not influenced by your will; let's call it a part of fate. Please, bear in mind that your destiny can unfold only in accordance with what you are: therefore, even if they belong to your more unconscious self, these characteristics are parts of you, definitely.

The karmic chart complements the psychological portrait or natal chart. It is based on the positions of the Lunar Nodes, the Black Moon, and the Part of Fortune. These elements of the chart, sometimes referred to as fictitious points, provide information about the spiritual meaning of your destiny. Owing to the fact that we all have in us acquired knowledge and the urge to go on a quest, our life is an evolutionary journey... However, these texts must be read with great caution: this is the reason why you will find this analysis in the Annex 2 of your report.

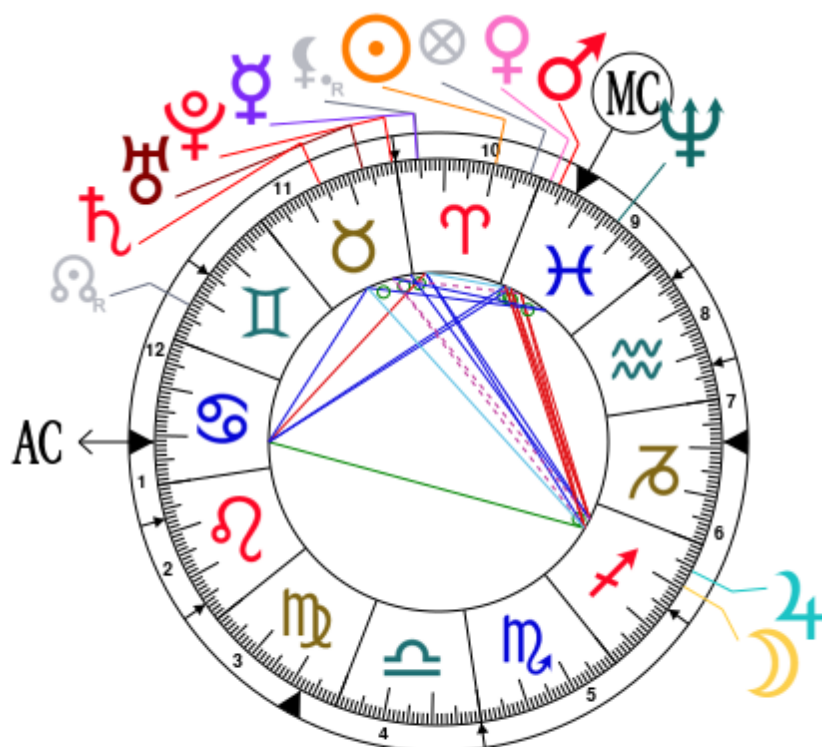


# Your Planets, Houses, Aspects, and Natal Chart

Vincent van Gogh, born March 30, 1853, at 11:00 AM, Zundert (Noord-Brabant), Netherlands [4.40E ; 51.28N ; 0E18]

Natal Planets				In House	Natal Houses (Placidus)		
☉ Sun	9°39'	♈ Aries		House 10	House 1	21°17'	♋ Cancer
☾ Moon	20°44'	♐ Sagittarius		House 6	House 2	7°05'	♌ Leo
☿ Mercury	25°36'	♈ Aries		House 10	House 3	26°11'	♌ Leo
♀ Venus	28°03'	♓ Pisces		House 10	House 4	22°16'	♍ Virgo
♂ Mars	26°08'	♓ Pisces		House 10	House 5	29°54'	♎ Libra
♃ Jupiter	24°16'	♐ Sagittarius		House 6	House 6	15°13'	♐ Sagittarius
♄ Saturn	15°57'	♉ Taurus		House 11	House 7	21°17'	♑ Capricorn
♅ Uranus	6°48'	♉ Taurus		House 11	House 8	7°05'	♒ Aquarius
♆ Neptune	12°13'	♓ Pisces		House 9	House 9	26°11'	♒ Aquarius
♇ Pluto	0°46'	♉ Taurus		House 11	House 10	22°16'	♓ Pisces
♊ Node	22°28' R	♊ Gemini		House 12	House 11	29°54'	♈ Aries
♋ Lilith	25°23' R	♈ Aries		House 10	House 12	15°13'	♊ Gemini
AS AS	21°17'	♋ Cancer					
MC MC	22°16'	♓ Pisces					

In keeping with the common practice, we consider that a planet posited within 1 degree of the next house belongs to that house. We allow an orb of 2 degrees for the ASC and the MC.



## List of Your Active Planetary Aspects

Please find below the list of all the active inter-aspects which are interpreted in this report, in addition to your planets in sign, in house, and all your planetary dominants. Since the aspects between slow-moving planets are of a collective nature, they are not displayed, in compliance with our interpretation rules.

- ★★★★★ Moon trine Mercury, orb 4° 52'
- ★☆☆☆☆ Moon square Venus, orb 7° 19'
- ★★☆☆☆ Moon square Mars, orb 5° 23'
- ★★★★★ Moon conjunction Jupiter, orb 3° 31'
- ★★★★★ Moon bi-quintile Saturn, orb 1° 13'
- ★★☆☆☆ Moon sesqui-quadrant Uranus, orb 1° 03'
- ★★☆☆☆ Moon inconjunction Ascendant, orb -0° 32'
- ★★★★★ Moon square Midheaven, orb 1° 32'
- ★★★★★ Mercury semi-sextile Mars, orb -0° 31'
- ★★★★★ Mercury trine Jupiter, orb 1° 2'
- ★★★★★ Mercury conjunction Pluto, orb 5° 09'
- ★★☆☆☆ Mercury square Ascendant, orb -4° 19'
- ★★★★★ Venus conjunction Mars, orb 1° 55'
- ★★☆☆☆ Venus square Jupiter, orb 3° 47'
- ★★★★★ Venus trine Ascendant, orb -6° 46'
- ★★★★★ Venus conjunction Midheaven, orb 5° 47'
- ★★☆☆☆ Mars square Jupiter, orb 1° 51'
- ★★★★★ Mars trine Ascendant, orb -4° 5'
- ★★★★★ Mars conjunction Midheaven, orb 3° 51'
- ★★☆☆☆ Jupiter square Midheaven, orb -1° 59'
- ★★★★★ Saturn sextile Ascendant, orb 5° 19'
- ★★☆☆☆ Uranus semi-square Midheaven, orb -0° 28'
- ★★★★★ Neptune conjunction Midheaven, orb 10° 02'

## Meaning of Stars

Stars indicate the strength of the aspects. Two solid coloured stars (there are half-stars also), mean that the aspect is powerful enough to be noticed at the first reading.

We strongly advise that you read the paragraphs displaying less than two stars later on, after you have absorbed the full import of the other texts.

The yellow colour indicates a soothing and conciliating aspect, and the red colour, a dynamic and tense aspect. The red aspects enable you to evolve, to take action, and to learn to turn your "weaknesses" into assets through your life experiences. The yellow aspects are innate strengths on which you rely in order to grow better with the former...

## Preamble

When interpreting a natal chart, the best method is to start gradually from general features to specific ones. Thus, there is usually a plan to be followed, from the overall analysis of the chart and its structure, to the description of its different character traits.

In the first part, an overall analysis of the chart enables us to figure out the personality's main features and to emphasize several points that are confirmed or not in the detailed analysis: in any case, those general traits are taken into account. Human personality is an infinitely intricate entity and describing it is a complex task. Claiming to rapidly summarize it is illusory, although it does not mean that it is an impossible challenge. It is essential to read a natal chart several times in order to absorb all its different meanings and to grasp all this complexity. But the exercise is worthwhile.

In brief, a natal chart is composed of ten planets: two luminaries, the Sun and the Moon, three fast-moving or individual planets, Mercury, Venus and Mars, two slow-moving planets, Jupiter and Saturn, and three very slow-moving planets, Uranus, Neptune and Pluto. Additional secondary elements are: the Lunar Nodes, the Dark Moon or Lilith, Chiron and other minor objects. They are all posited on the Zodiac wheel consisting of twelve signs, from Aries to Pisces, and divided into twelve astrological houses.

The first step is to evaluate the importance of each planet. This is what we call identifying the dominant planets. This process obeys rules that depend on the astrologer's sensitivity and experience but it also has precise and steady bases: thus, we can take into account the parameters of a planet's activity (the number of active aspects a planet forms, the importance of each aspect according to its nature and its exactness), angularity parameters; (proximity to the four angles, Ascendant, Midheaven, Descendant and Imum Coeli or Nadir, all of them being evaluated numerically, according to the kind of angle and the planet-angle distance) and quality parameters (rulership, exaltation, exile and fall). Finally, other criteria such as the rulership of the Ascendant and the Midheaven etc. are important.

These different criteria allow a planet to be highlighted and lead to useful conclusions when interpreting the chart.

The overall chart analysis begins with the observation of three sorts of planetary distributions in the chart: Eastern or Western hemisphere, Northern or Southern hemisphere, and quadrants (North-eastern, North-western, South-eastern and South-western). These three distributions give a general tone in terms of introversion and extraversion, willpower, sociability, and behavioural predispositions.

Then, there are three additional distributions: elements (called triplicity since there are three groups of signs for each one) - Fire, Air, Earth and Water - corresponding to a character typology, modality (or quadruplicity with four groups of signs for each one) - Cardinal, Fixed and Mutable - and polarity (Yin and Yang).

There are three types of dominants: dominant planets, dominant signs and dominant houses. The novice thinks astrology means only "to be Aries" or sometimes, for example, "to be Aries Ascendant Virgo". It is actually far more complex. Although the Sun and the Ascendant alone may reveal a large part of the character - approximately a third or a half of your psychological signature, a person is neither "just the Sun" (called the sign) nor just "the first house" (the Ascendant). Thus, a particular planet's influence

may be significantly increased; a particular sign or house may contain a group of planets that will bring nuances and sometimes weaken the role of the Ascendant, of the Sun sign etc.

Lastly, there are two other criteria: accentuations (angular, succedent and cadent) which are a classification of astrological houses and types of decanates that are occupied (each sign is divided into three decanates of ten degrees each). They provide some additional informations.

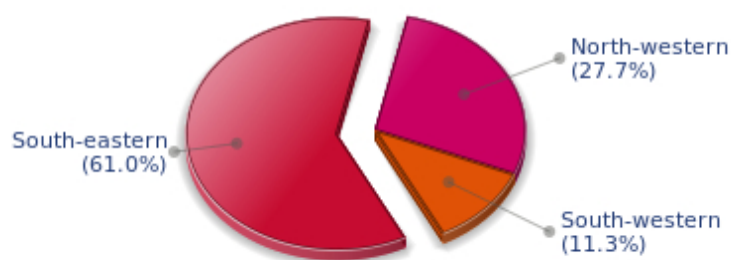
These general character traits must not be taken literally; they are, somehow, preparing for the chart reading. They allow to understand the second part of the analysis, which is more detailed and precise. It focuses on every area of the personality and provides a synthesis of all the above-mentioned parameters according to sound hierarchical rules.

As explained in the introduction of your Psychological Portrait report, minor dominants are analysed at the end of Annex 1, for purposes of clarity.

## Your Planetary Repartitions

Each quadrant is a combination of the four hemispheres of your birth chart and relates to a character typology. The Southern hemisphere – the top of your chart, around the Midheaven – is associated with extraversion, action, and public life, whereas the Northern hemisphere prompts to introversion, reflexion, and private life. The Eastern hemisphere – the left part, around the Ascendant – is linked to your ego and your willpower, whereas the Western hemisphere indicates how other people influence you, and how flexible you are when you make a decision.

### Your Four Quadrants



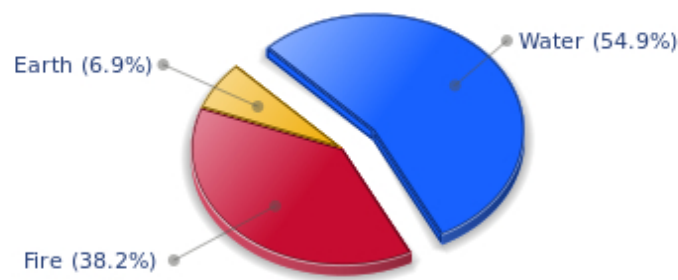
Vincent van Gogh, the diurnal South-eastern quadrant, consisting of the 10th, 11th and 12th houses, prevails in your chart: assertion and goals achievement are at the centre of your concerns. You are very keen to implement your dreams and your plans. You achieve your ambitions as soon as possible, whether through an active social life, highly charged friendly relations, or an urge to take actions in order to reap - in the eyes of the world, of course - the rewards of your dynamism. It is likely that spirituality or humanitarian actions are part of your motivations, sometimes at the price of some degree of isolation.



## Your Dominant Modes and Elements

Vincent van Gogh, here are the graphs of your Elements and Modes, based on planets' position and angles in the twelve signs:

### Your Four Elements



The predominance of Water signs indicates high sensitivity and elevation through feelings, Vincent van Gogh. Your heart and your emotions are your driving forces, and you can't do anything on Earth if you don't feel a strong affective charge (as a matter of fact, the word "feeling" is essential in your psychology). You need to love in order to understand, and to feel in order to take action, which causes a certain vulnerability which you should fight against.

Vincent van Gogh, Fire is dominant in your natal chart and endows you with intuition, energy, courage, self-confidence, and enthusiasm! You are inclined to be passionate, you assert your willpower, you move forward, and come hell or high water, you achieve your dreams and your goals. The relative weakness of this element is the difficulty to step back or a kind of boldness that may prompt you to do foolish things.

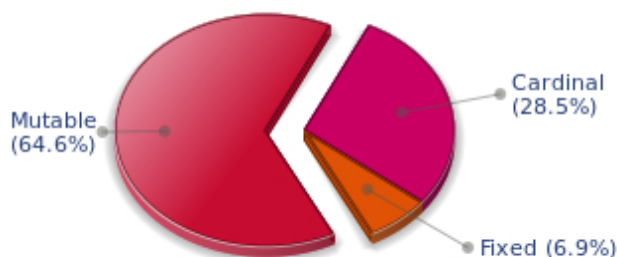
Earth qualities are under-represented in your chart, with only 6.88% instead of the average 25%. Deficiency in Earth may indicate that you have no interest in material and concrete values. It is likely that you live too much in your heart or in your mind, or even in your enthusiasm! The fact remains that you may end up in tricky situations, due to your lack of good sense or forethought: material life is unavoidable even if you are rather idealistic, dreamy, or easily content. You must tackle concrete life necessities, for fear of... being forced to cope with them, later, in much more unpleasant ways!

Air is under-represented in your natal chart, with only 0.00% instead of the average 25%. Air symbolizes the values of communication, exchanges with others, but also adaptability and flexibility abilities: if you don't get out of your cocoon to talk, to show interest in others, and to socialize, you may have problems understanding others. Because of your lack of flexibility or of your refusal to adapt yourself, you may be suddenly overwhelmed by events. You should get into the habit of talking, of phoning, and of thinking in terms of "mobility, flexibility, adaptability, change" in every circumstance. It will spare you so many troubles!

The twelve zodiacal signs are split up into three groups or modes, called quadruplicities, a learned word

meaning only that these three groups include four signs. The Cardinal, Fixed and Mutable modes are more or less represented in your natal chart, depending on planets' positions and importance, and on angles in the twelve signs.

## Your Modes



The Mutable mode is the most emphasized one in your natal chart, Vincent van Gogh, which indicates a mobile character that is curious and thirsty for new experiences and evolution. You are lively and flexible, and you like to react quickly to solicitations, but don't confuse mobility with agitation, since this is the danger with this configuration - and with you, stagnation is out of the question. Security doesn't matter as long as you are not bored. You optimize, you change things, you change yourself... all this in a speedy way.

## Your Dominants: Planets, Signs and Houses

The issue of dominant planets has existed since the mists of time in astrology: how nice it would be if a person could be described with a few words and one or several planets that would represent their character, without having to analyse such elements as rulerships, angularities, houses, etc!

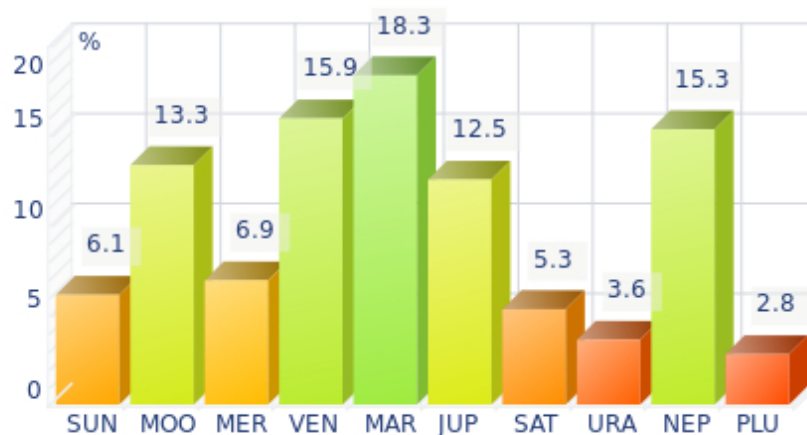
The ten planets - the Sun throughout Pluto - are a bit like ten characters in a role-play, each one has its own personality, its own way of acting, its own strengths and weaknesses. They actually represent a classification into ten distinct personalities, and astrologers have always tried to associate one or several dominant planets to a natal chart as well as dominant signs and houses.

Indeed, it is quite the same situation with signs and houses. If planets symbolize characters, signs represent hues - the mental, emotional and physical structures of an individual. The sign in which a planet is posited is like a character whose features are modified according to the place where he lives. In a chart, there are usually one, two or three highlighted signs that allow to rapidly describe its owner.

Regarding astrological houses, the principle is even simpler: the twelve houses correspond to twelve fields of life, and planets tenanted any given house increase that house's importance and highlight all relevant life departments: it may be marriage, work, friendship etc.

Vincent van Gogh, here is the evaluation diagramme for your planets:

## Your Dominant Planets



The three planets that are most highlighted in your chart are Mars, Venus and Neptune.

Mars is one of your dominant planets and provides you with its efficient energy and enthusiasm: with a powerful Mars in your chart, action - but also will and ability to undertake - is not an empty word for you. You are active, dynamic, willing to fight, courageous, and you are never afraid to move mountains, even though risks are part of the adventures that you start with determination.

However, your patience is not always up to your boldness and a kind of feverishness, or even anger, can tarnish the quality of your achievements. That would be a pity since the Marsian is a champion in matters of efficiency! Mars symbolizes display of action, conquering spirit that favours discipline and order - beware of not being fussy - and lies at the frontier between action and brutality, between conquest and potential aggressiveness.

With Venus among your dominant planets, one of your first reflexes is... to please! Your look, your charm, and your seduction are omnipresent elements in your behaviour.

Your approach to things is connected to your heart, and for you, no real communication can flow if your interlocutors exude no sympathy or warmth. Cold and logical reasoning, clear thoughts and good sense are not important to you: if there is no affective bond with your environment, no connection can be established with the Venusian that you are, and nothing happens.

You have a strong artistic side, and you never neglect subjective but clear concepts such as pleasure, beauty, and also sensuality. However, sometimes to the detriment of efficiency, durability, logic, and... detachment.

With Neptune as one of your three dominant planets, you are a secretive and ambiguous person, often confused or unclear about your own motivations! Indeed, you are endowed with unlimited imagination and inspiration, as well as with an extreme sensibility that may turn you into a psychic or a clairvoyant. On the other hand, your impressionability is such that you may have difficulties in separating what is concrete and solid from illusions or dreams.

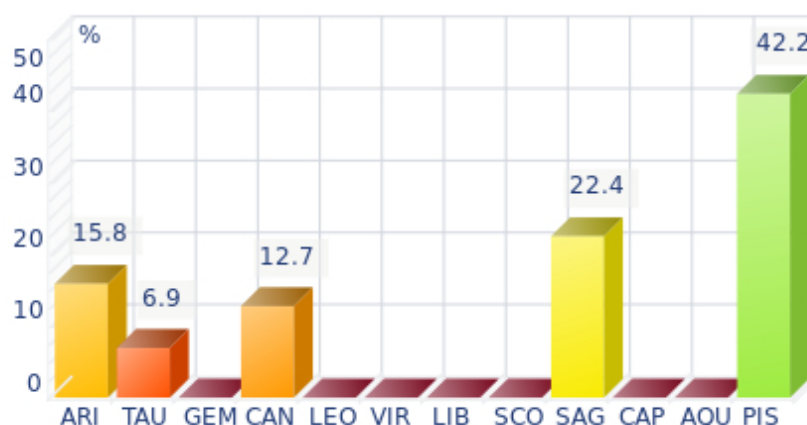
A mystic, a visionary or a poet, you daydream, like any Neptunian, and you see what few people only can

see, all of this being shrouded in aesthetic mists when you are fired with enthusiasm.

A boundless, infinity-loving man like you is inevitably likely to be more vulnerable and easily hurt because of your acute perception of events. In such cases, you are hit full in the face, and you may sink into gloomy daydreamings and dark melancholy.

That said, this mysterious aura definitely gives you an indefinable charm in the eyes of your close friends who are often fascinated by your unique ability to feel and to see what ordinary people can never see!

### Your Dominant Signs



In your natal chart, the three most important signs, delineated according to the above-mentioned criteria, are, in decreasing order of strength, Pisces, Sagittarius and Aries. They are often prominent because your Ascendant and your Sun are posited there. However, it is not always the case: it may be because they are occupied by a cluster of planets, by a planet near an angle other than the Midheaven and the Ascendant, or because two or three planets are very active and form numerous aspects from these signs. Therefore, you partly take on the three signs' characteristics, which are somehow superimposed on your natal chart, and all the more so if any of the signs in question is highlighted.

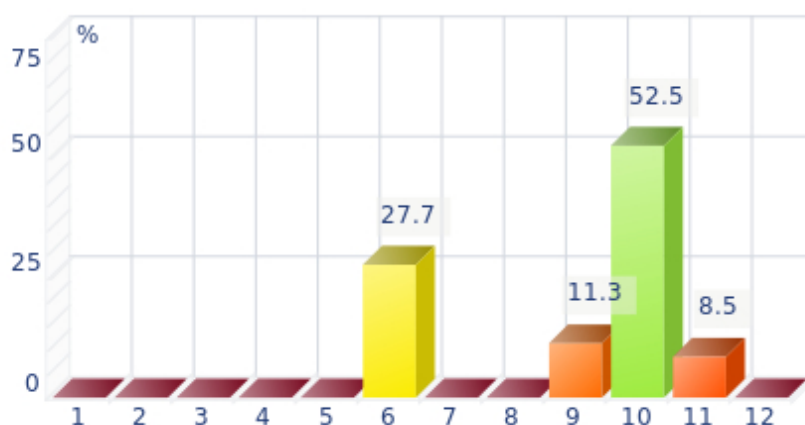
Pisces is among your dominant signs and endows your personality with unlimited sources of emotions, dreams, imagination, and sensitivity, to the extent that you literally swim in a cloudy ocean of delightful impressions. These impressions are so intense and overwhelming that you don't really need to take action concretely, to show your dynamism or your willpower, since you already live so intensely with your feelings - you are as keen as a radar, always on the alert! That is why some people may not like your carelessness, and the lack of clarity in your opinions or actions; however they quickly notice your artistic talents, your poetic or artistic side, and your total lack of wickedness. Besides, you feel compassion for people in pain - empathy is one of your great qualities. Thanks to your flexibility, your intuition, and your generosity, you may spend an important part of your life helping others. And if you are creative or if you have well-known artistic talents, everybody will forgive your little flaws: absent-mindedness, lack of energy or of will, too dreamy temperament...

Sagittarius, an adventurous and conquering fire sign, is dominant in your chart: you are enthusiastic, enterprising, optimistic, very sociable, and mobile - you have itchy feet, both physically and mentally. Nobody gets bored with you because you are always planning things and suggesting excursions, at least... when you are around and not already gone on a trip! Obviously, so many movements for one man

may scare people off, and some of them may even criticize your brutality or your tendency to loose your temper, but you are so warm and genuine, so expansive, isn't this a good thing? And all the more so, since your sense of humour is overwhelming...

Arian blood runs through your veins! You have that enthusiasm, frankness, courage, and fastness which usually make you so likeable in spite of your somewhat rough, naive, or violent side. As a bonus, Aries' gushing fire always gives you the impetus to make a fresh start, should you stumble or undergo life hardship!

### Your Dominant Houses



Houses 10, 6 and 9 are the most tenanted ones in your natal chart. To compute their strength, planets and angles are weighed according to various astrological criteria such as swiftness, activity, angularity, rulership etc. From the analysis of the most tenanted Houses, the Astrologer deduces the fields of activity that are most relevant to you, be it because of what you are experiencing, or what you may experience in the future, or because of your deep inner motivations.

With a prominent 10th house, your destiny's achievement may be very notable: the 10th house represents your career, your public life, and your ambitions. A good deal of your energy may thus be used to successfully implement what you have in mind. Instinctively, you are very keen to make your dreams come true. Sooner or later, you will deal with the public, and your personal achievement will go through trials and ordeals: other people and visible actions.

Your 6th house is quite emphasized and indicates interest in work and daily occupations that take up a lot of your time: in analogy with Virgo, this house inclines towards perfectionism and training; somehow, you may be fulfilled through the process of being useful and investing your energy in your work. An environment appealing to you may be involved - your colleagues, for example - or a passion for one of these daily occupations. Medical positions or pets may play a role in your life; or ancillary love affairs too... These are a few possibilities indicated by an important 6th house.

Your 9th house being one of your most tenanted house, or at least emphasized, travels and faraway places play a major role for you: travels may take place in a symbolic sense, namely mind speculations or conceptions about political matters, philosophy, religion or spirituality, or in the literal sense, such as real long distance travels by plane. It may also be that you spend a part of your life far from home, etc. You are driven by some kind of rebelliousness, which urges you to explore the Unknown; it may also be



the call of the adventure. Besides, if the rest of your chart concurs, you may be considered as a real draught, often up hill and down dale, constantly on the lookout for exciting discoveries and new, enchanting horizons.

## Your Style, Behaviour, and Peculiarities

What is commonly known as "sign" indicates the position of the Sun in the Zodiac. The Sun highlights all the characteristics of the sign he tenants. According to astrology traditional rules, these characteristics are all the more pure and exact when the Sun is strong in the sign, or when the sign is particularly highlighted within the chart. Here, we indicate the pure characteristics of the sign but you must bear in mind that they may only shed a light on a particular aspect of your personality. Indeed, the sole sign of the Sun, or of the Ascendant, can never describe an astrological chart because it depends on the degree of strength of the said sign in your chart.

Another important point must be underlined. Contrary to the Ascendant, which clearly describes your appearance, your vitality, your physical constitution, your spontaneous behaviour and the image you project, your Sun sign describes your inner self, which you may not completely be aware of, and which may emerge gradually as you mature: it is about your inner personality that you reveal only to the members of your entourage whom you trust. The Sun sign is likely to be the final form of your personality, once it has evolved in line with the energies of the other parts of your chart, the beginning of which is seen in the Ascendant, your external "bark".

The Ascendant is one of the major components of your natal chart. It is the zodiacal sign that rises in the East at the very moment of your birth. To calculate it, it is therefore necessary to know your exact time of birth.

It provides with a wealth of information on your personality. It is one of the key features that allows the analysis of several parts of you, such as your appearance, your character as it is initially perceived and your immediate behaviour. It describes the external aspect of your personality which you always display, but it also describes your physical constitution in the long-term, in other words, your health.

Please be aware that, in spite of the importance of the Ascendant, the accuracy of its description depends on how strongly highlighted it is in your natal chart. We use the entire set of astrological rules to assess the strength of the Ascendant. In most cases, the Ascendant is as revealing as your "sign", i.e., the sign where the Sun is posited at the time of birth.

## You were born under the sign of Aries and your Ascendant is in Cancer

Before broaching the details of the meaning of your Sun and your Ascendant, as a preamble, we offer a brief generic interpretation of their combination in your chart:

This combination is not too comfortable, but it is interesting. With your Cancer Ascendant, your instinctive reaction is to remain cautious whenever you face unfamiliar situations, and watch for anything that might throw you off balance. You try to keep the situation under control, and you avoid unnecessary risks. The boldness and the headbutts of your Aries Sun are toned down by fears when you deem that the final outcome may not be meaningful enough. You are ambivalent and moody, with an imagination which often bolts and supports your clear-cut decisions, or on the contrary thwart them if paranoia is involved. These two signs tend to assert themselves, though they do so in quite different ways. Owing to your Cancer Ascendant, when people meet you for the first time, they notice your outwards appearance which is protective and caring, and that you use your vindictive crab's claws only

in case of vexations. When people get to know you better, they see that beneath this facade, your Aries Sun endows you with a much tougher personality. This discrepancy may scare away a few people!

### **You were born with the Sun in Aries**

Your natural energy is cut-and-dried. It may prompt you to take the driver's seat wherever you are. Were it not for the strange feeling of sympathy you arouse, you would seem to be arrogant. Charging ahead is not devoid of drawbacks. Your courage and your restlessness may hurt you and cause you to doubt, all of a sudden. As a consequence, your courage, your honesty, your enthusiasm and your straightforwardness may turn into aggressiveness, rebellion and vulnerability that were never suspected. Fortunately, the level of your dynamism is very high and your instinctive and pugnacious side, your particularly profuse energy will not leave you helpless for too long. The fire in your blood will put you back on the saddle towards new stampedes and conquests, as ambitious and glorious as they are perilous.

Because you are born under this sign, you are courageous, honest, enthusiastic, dynamic, swift, extroverted, straightforward, effusive, warm, impulsive, adventurous, bold, martial, competitive, but you may also be gullible, domineering, self-centered, impatient, foolish, thoughtless, childish, irascible, reckless, primary and a blunderer.

In love, Sir, more often than not, your passions are strong and varied. Far from being roadblocks, obstacles have a stimulating effect. You like quick victories and your love life is a series of conquests and of break-ups, as boredom often puts an end to the initial love that made you move mountains.

Your sexuality is powerful and prevails over feelings. You may marry early or on impulse, but it does not prevent you from having a rich and varied love life. Usually, you have few children.

### **Your Ascendant is in Cancer**

Psychologically speaking, your nature is dreamy, oriented towards nostalgia for things past. You are very instinctive and you protect yourself against the outside world. Your inner life is rich, with fertile and even unlimited imagination, a propensity to avoid unnecessary risks and to pursue security. You show your true face only to persons you can trust, when there is a kind of well being triggered by the nostalgia for the past.

As you are born under this sign, you are emotional, sentimental, restful, imaginative, sensitive, loyal, enduring, protective, vulnerable, generous, romantic, tender, poetic, maternal, dreamy, indolent, greedy and dedicated. You may also be fearful, unrealistic, evasive, passive, touchy, anxious, dependent, stubborn, lunatic, backward-looking, lazy, burdensome, impenetrable and a homebody.

Love in the masculine mode: for you, Sir, in love, you are tender, sensitive and quite loyal. You are influenced by a mother-figure and you unconsciously look for a partner who will offer as much attention and affection as you used to receive as a child. You are a homebody and a dreamer and you blossom in the family cocoon you create, dreaming of adventures and extraordinary trips... that you most often take in your head.

Tenderness is more important than sexuality, even though it is also an agent for security and for stability. You tremendously appreciate to be again the spoiled child that you used to be, as you savour tasty little dishes or as you receive the frequent praises you need in order to feel reassured.

You are sheltered from tragedies and life complications because at the very moment when a difficult situation emerges, you nip it in the bud either by ignoring it or by withdrawing into your shell quietly, until the storm subsides.

Your home is happy and rich, quiet and harmonious, throughout your life.

### The ruler of your chart is in Sagittarius

The ruler of the Ascendant, also referred to as the chart ruler, brings a few interesting nuances to the meanings provided by the Sun and the Ascendant. The sign in which the ruler of the Ascendant is posited fine-tunes the style of personality described by the Sun and the Ascendant. It may strengthen it if the sign is identical to either of them.

The ruler of the Ascendant, Vincent van Gogh, is the Moon. It is posited in the sign of Sagittarius and gives you a strong inclination for the open sea and for freedom. Loyal and benevolent, you put things into perspective, and you understand the true value of things, perhaps precisely because you travel - whether actually or mentally - and that stepping back from your intimate environment enables you to better perceive what is important and worthy.

### Aspects to your Ascendant

Several planets form an aspect with your Ascendant, Vincent van Gogh. Therefore, in their specific way, they modify your behaviour and your personality, which do not take on the pure characteristics of your Cancer Ascendant only, but which are a blend of its characteristics with those of the said aspects.

#### ★★★★★ Mercury square Ascendant, orb -4° 19'

Sometimes, you find it hard to behave the way you wish, Vincent van Gogh. It is because of Mercury who is not really in phase with your Ascendant. You happen to dislike the way you communicate, either because you exceedingly intellectualise everything, or on the contrary, because you do not make the effort to thoroughly analyse the situation when you are with other people.

#### ★★★★★ Mars trine Ascendant, orb -4° 5'

Your vitality and your taste for action are obvious, Vincent van Gogh. Thanks to Mars, your behaviour is often perceived as energetic, or at least, as action-oriented and enterprising. Your dynamism is one of your constant assets.

#### ★★★★★ Moon inconjunction Ascendant, orb -0° 32'

Sometimes, Vincent van Gogh, your sensitivity clashes with the image you want to project. As a result, you may feel vulnerable and suffer if you let yourself be disheartened. Try to put things into perspective and to confront your emotions without fearing your external image. This is how you can compensate for this minor dissonance between the Moon and your Ascendant.

#### ★★★★★ Venus trine Ascendant, orb -6° 46'

Thanks to Venus, Vincent van Gogh, your behaviour is in harmony with your affective life, and you need not make any special effort in order to express your feelings in a natural way and without arousing people's criticisms. This asset enhances your natural easiness and charm, which is definitely not unpleasant!

★★★★★ Saturn sextile Ascendant, orb 5° 19'

Saturn is in soft aspect with your Ascendant, Vincent van Gogh. This harmonious configuration brings about a responsible, loyal, persevering, and patient behaviour, and in a word, reliable. Your seriousness is appreciated, and owing to your capacity to easily analyse situations, you come across as a sincere and trustworthy person.



## Your Sensitivity

Your nature is optimistic and emotional, Vincent van Gogh, and you are caught up in two incompatible longings: you are fond of exoticism and independence of movement, but at the same time, you feel comfortable in a form of middle-class attitude and conformism; in general, it translates into a succession of moods, now quiet and well adapted to the situations you experience, now marked by an irresistible desire for change and revival. You have a good and naïve nature, with a lot of self-confidence. Your emotionalism prompts you to live intensely a variety of numerous emotional experiences, a bit scattered, but with all the stimulations you need to be a balanced person. Your pleasant and welcoming attitude wins you some degree of popularity, all the more so because, despite your thirst for adventures that may scare away some people, you adjust to your environment's customs so easily.

Vincent van Gogh, it is likely that you are popular in your work environment, and you may even be considered to be some kind of star by your colleagues. Or, if it is not the case, you have a clear tendency to react emotionally, very quickly and strongly in this sphere. At work, you need to feel liked and appreciated and to be shown accordingly!

You are mobile and changeable in your profession, and to tell the truth, your everyday life is full of surprises. Sensitive and imaginative, you are vulnerable to others' opinions. Health issues concern you more than they should; beware of not becoming a hypochondriac, some day...

### ★★★★★ Moon conjunction Jupiter, orb 3° 31'

Why should one complicate one's life if it is possible to enjoy the simple joys of the present? This harmonic Moon-Jupiter aspect indicates a cheerful nature, which earns your entourage's liking and protects the balance of your intimate life. Your sociability is supported by your desire to smoothly adhere to a group, a social or family cell. You are fond of moments where you unwind and relax. You value your daily comfort and, to preserve it, you accept to play by the rules of privacy. When this aspect dictates your attitudes, you behave like a person easy to get along with... even though your personal demands, relegated to the backseat, come up again at top speed and force you to behave more in line with your inner needs.

### ★★★☆☆ Moon square Mars, orb 5° 23'

The Moon-Mars dissonance suggests touchiness and sometimes, aggressiveness. You are irascible and very sensitive to all sorts of threats and dangers. You react very quickly, too hastily. To protect your well being, you must learn to control your mood, to coordinate your actions and to balance your opinions. You are often disturbed by plain facts: Either you seek refuge in your intimate realm and refuse to face the truth or, on the contrary, you are engaged in altercations, which forbid all tranquillity. It is important that you balance these two tendencies and that you alternate moments of action with phases of carelessness and relaxation. These two attitudes are relatively irreconcilable.

### ★★★☆☆ Moon sesqui-square Uranus, orb 1° 03'

The Moon and Uranus intrinsically share little in common: they get along as well as fire and water! It is difficult for you to reconcile your desire for well being and intimacy with your destiny's dazzling passions and thunderbolts. You may feel that your intimate and family realm hampers your freedom. There is a potential for crises, explosions or splits. The desire for independence does not get on well with security concerns. There may be strong temptations endangering your very life foundations and you may embark upon a liberating and personal adventure. However, you fear rash decisions. Your need for security may temper your impulses and put a brake on your individualistic aspirations. To harmonize these tendencies

within your intimate life, you must leave yourself enough room for personal expression or for an activity of your own. Otherwise, as days go by, built-up tensions may jeopardize the quiet course of your life.

#### ★★★★★ Moon square Venus, orb 7° 19'

With this Moon-Venus aspect, passion and sensuality may often upset your well being and your tranquillity. Your way of loving is dual. You either accept life simple joys, or you live through intense emotions and consuming fevers. It is difficult for you to reconcile your daily life with your affective or sensual desire. Habits kill passion, whereas passion forbids the carelessness that is yet indispensable for your fulfilment. This aspect suggests the traditional mother/woman and father/lover antagonisms that are incompatible although it is possible to experience them alternately. It is important that you balance these antinomical desires: you may let the turmoil of your heart break the monotony of an amorous life devoid of excitement but it does not mean that you must forsake the reassuring values of a couple, or family cell, where you can rest at will and give free rein to your intimate behaviour. You may indulge yourself but don't forget that you must deserve love.

#### ★★★★★ Moon bi-quintile Saturn, orb 1° 13'

This harmonious Moon-Saturn aspect is an element of stability for your private life. Your daily life lives up to your demands, you are totally true to yourself and logical through your very intimate behaviour. You do not choose the easy way out: on the contrary, it is in difficult situations that you are at your best. It is very unlikely that you become destabilized by trifles. This aspect indicates stability and also perfectionism. You are longing for a private life respectful of your heart of hearts and your genuine desires. Your well being is at this price, and its quest remains perpetual. Despite your reserved private behaviour, your emotions run very deep. You have a strong need for protection and for security. Your aspirations lead you towards contemplation or studies, more than towards social utilities.

## Your Affectivity

In your chart, the Sun is in Aries and Venus, in Pisces. Paradoxical association: the enthusiasm and the spring freshness of the Aries Sun echo the subtlety and the distance of a Piscean Venus. Your aspirations (solar), prompt you to be carried away by your heart impulses and to exchange with spontaneity ... but your desires (Venusian) obey different rules that are elusive, and sometimes, irrational. Between the beginning and the end, the frontier is often tenuous and the balance is fragile. Your affective behaviour may seem disconcerting because you can abruptly shift from enthusiasm to renunciation. This is because your senses do not follow your ideals, because your desires do not match the patterns that appeal to you, as sincere as they may be. Your loved one does not necessarily resemble the conceptualized ideal you dream of. Attraction – or repulsion – is based on ineffable impressions that short-lived and sudden impulses cannot erase nor construct. Although you may show a certain naivety, your senses quickly discriminate between the one-night-stand illusory enthusiasm and the essential harmony without which two persons drift apart, sooner or later. Love is not simple! And if it were, indifference would rapidly triumph over the wildest feelings.

Compassion and self-sacrifice: you are fond of this romantic mode and you are willing to express your feelings, the intensity of which is unlimited, Vincent van Gogh. With excitement and imagination, you dream your amorous relationships as much as you actually live through them. The line between the concrete world and your huge hopes is so tenuous that you don't know anymore where it is, although your particularly rich sensuality prompts you to experience your feelings concretely. You want to share

communion and passion with your partner. The lyrical flights of your feelings break from your heart as waves that you do not attempt to control because they give you a real, almost voluptuous and carnal joy. You give a lot – sometimes too much - without reservation, almost without propriety, totally revealing your vulnerability during your amorous exchanges because you are sure of the quality and the might of your feelings: they are so powerful and overwhelming that you are aware that nothing can resist them.

If there are no tense aspects with other planets in your chart, this configuration suggests that you are prone, Vincent van Gogh, to create a link between your career and the sentimental area, even though it may come under various guises: you may be in favour with women in general and enjoy their support as you climb the social ladder and you achieve success more quickly making use of your charm and of your seductive ability. Sometimes, you may mingle love and career (or marriage), thus combining business with pleasure and indeed even... with your destiny. In other cases, you will be interested in Venusian occupations such as the arts, aesthetics, decoration, luxury trade or diplomacy. Whatever your activity, you will appreciate it tremendously and you will feel very much at ease. You will enjoy affective popularity and consequently, an aura of the luck of the devil that can propel you to the top or, at least, to where you dream of being. You are often a perfectionist and the careful zeal you dedicate to the attainment of your objectives greatly contributes to their achievement. Never do you forget them, and nothing pleases you more than to rub shoulders with important people in the higher spheres of diplomacy, politics or business. You love to act as the mediator or the go-between and to have your irresistible charm duly acknowledged and rewarded. According to the Tradition, Venus in the 10th house often indicates that men are strongly attached to their mother and this tie favourably influences their destiny. In some adverse circumstances, you may lack constancy or perseverance in love, or this area may, to some extent, contradict your career objectives, owing to your carelessness. You may be dominated by women, lack authority or you may find yourself doing a balancing act between your love life and your professional life, and being unable to make a choice, thus damaging both.

#### ★★★★★ Venus conjunction Mars, orb 1° 55'

With this aspect, innate affective behaviours prevail over opportunisms and calculations. You do not cheat with feelings and you prefer to be guided by your likes ... or your dislikes. Love is neither to be reasoned upon nor to be explained. It is important to experience one's passions spontaneously and to give free rein to the heart's tumultuous manifestations as well as to the body's demands. In other words, to be one's true self in the "now". You need to live intensely, to try all kinds of situations, sometimes to get hurt. Your sensitivity is the driving force behind your decisions and your actions. Real experiences are worth the best intellectual concepts. Spurred by your thirst for emotions, you try to build your life on bases that match your desires. Here, the trap may be that you pay too much attention to your moods and affects. But without them, life would be so dull. Even though emotionalism betrays you occasionally, it remains your best ally.

#### ★★★☆☆ Venus square Jupiter, orb 3° 47'

This Venus-Jupiter dissonance indicates a strong will to seduce. However, there may be discrepancies between your words and your actions, as well as between your behaviour and your instinctive reactions. You may be carried away by a maelstrom of emotions, feelings and pleasures and you do not consider the possible consequences of your superficial attitude. Therefore, the apparent state of grace may turn into delusion. Proprieties and necessities of the moment forbid you to experience your desires. What you deem reasonable does not suit your heart's impulses. What a dilemma... Hopefully, as time goes by, you may reconcile your desires, your life patterns and the reasons of your heart with those of your mind.

## The Way You Take Action and Your Sexuality

You express your energy in a vague and random manner, Vincent van Gogh. This is not a handicap, but it prevents you from reasonably planning your long-term actions. You are a bit whimsical and scattered, sometimes hyperactive and willing to devour obstacles with your big shark teeth, but often, you take the easy way out because of your desire for tranquillity. You loathe conflicts and your cleverness and your flexibility allow you to achieve your goals while shrewdly worming your way through difficulties. Your intuition and your imagination are the assets that compensate your lack of efficiency and discipline. You are much more successful when you work for a noble cause, usually a collective one, sometimes political or spiritual ones. On the sexual plane, you are whimsical and impossible to categorize. You are so changing and malleable that you can shift from one extreme to another, according to your partner's personality, because your adaptability and your flexibility are really strong.

Your energy and your capacity for action are at the service of your career and your destiny, Vincent van Gogh : No doubt, this is one of the simplest and most transparent planetary configurations. You do not hesitate. For you, action means climbing up the social ladder, sooner or later, winning the marshal's baton, defeating setbacks through efforts and work, and overcoming the obstacles on your path.

You get your reward by the sweat of your brow, and you are aware that it is no easy business. Your personal approach is that nothing can be achieved without an effort because you are wise enough to be aware of it.

It is so deeply rooted in you that you may feel that you will get nothing if you do not fight for it. You are right, actually, at least as far as you are concerned, because it is your manner. Your destiny implies many struggles, and you have the necessary courage to join battle. However, as time unfolds, try to be gentle with yourself and indulge in a few moments of well-deserved rest and respite!

★★★☆☆ Mars square Jupiter, orb 1° 51'

You mobilize your energy as soon as there is an opportunity to turn your chances into concrete reality. You assert yourself in a spectacular and demonstrative manner as soon as an assembly gathers and there is a chance for success. However, too much haste and zeal may harm your projects and spoil your expected outcome. The danger with this aspect is your overzealousness as you strive to achieve your objectives and your ambitions, forcing your way through events, whereas the situation requires diplomacy and patience. Too much fieriness may make you miss your target. With this planetary configuration, it is important that you keep in mind that some circumstances need to be handled with precision and clear-sightedness. Not all opportunities are necessarily good. It would be a pity to lose your efficiency through excesses of opportunism or of enthusiasm.

## Your Intellect and Your Communication Style

You enjoy discussing and exchanging ideas. You know how to put forward sharp and provoking comments in order to keep the debate moving ahead. You tend to use words to put yourself in the forefront and you may become a leader. Your exact and swift, dazzling understanding favours a direct approach to problems and helpful decisions. You are inventive, intuitive and you are in a hurry to bring your projects to a successful conclusion. You do not pay attention to details and you prefer to go to the essentials. However, your decision-making process may be too impulsive and may throw you into



unconsidered actions; this is the reason why it may be good that you listen to other people's advice, that you do not walk headlong, and later, be forced to reverse back as a result, a situation you do not appreciate too much.

Your lively and conciliating mind is at the service of your career, Vincent van Gogh. Your natural mobility enables you to constantly adjust and to get the positions you want. Your professional achievement is often the result of your ability to understand that the key to success is in changing.

With your extreme flexibility, you may be interested in many simultaneous occupations. In any case, it is unlikely that you remain in the same company or the same sector all your life, unless the said sector is full of variety, human rapports and travels.

#### ★★★★★ Mercury trine Jupiter, orb 1° 2'

You display strong abilities for adaptation, social insertion and various learning capacities. You are credited with an acute sense of relations, probably because you can speak other people's language. You easily assimilate the most varied settings and your qualities are acknowledged. Your attitude and the words you use have the power to seduce and to convince your entourage. Diplomacy is an asset in your game. You are fit for negotiation and you seek compromise solutions. The only danger may be that sometimes, you too readily accept agreements that turn out to be less positive than foreseen, after a while. This is the other side of the coin for your exceptional flexibility and your unquestionable tact.

#### ★★★★★ Mercury conjunction Pluto, orb 5° 09'

Gullibility does not belong to the collection of your faults! You have a good grasp of human mechanisms and you easily detect flaws, calculations and hidden motivations. Human relations are subtle, never black or white, always complex. You often speak in riddles or in negations and you prefer to use the ambiguous language of symbols rather than the simplistic clarity of words. In this way, you fuel your mystery. On the relationship plane, your strength lies in the delicate art of highlighting flaws, detecting what destabilizes the enemy or, on the contrary, identifying what is relevant to your friends. You are more interested in what is concealed than in what is openly said. More often than not, you exercise an indisputable clear-sightedness.

#### ★★★★★ Moon trine Mercury, orb 4° 52'

Curiosity is part of your nature. You perceive everything with sharp acuity. You increase your attempts to establish connections and to exchange opinions and information, particularly when you are in a familiar and intimate context. When this configuration is well integrated, it underlines the multi-faceted nature of the mobility that defines your behaviour and your living conditions and endows you with strong adaptation abilities. You also show a remarkable gift for improvisation and you pick up the quality of the atmosphere so swiftly that you get off any tricky situations. However, you must keep your adaptation capacity under control because when it is overdeveloped, it may become an agent for instability.

#### ★★★★★ Mercury semi-sextile Mars, orb -0° 31'

The harmonic Mercury-Mars aspect is the signature of a quick wit and an energetic character. You take decisions rapidly and you implement them straight away. You never accept stiff situations. You need to design, to take action, to fight to express your acute sense of relation: the world, the people, everything is of concern to you... You need to be involved in relationships and in dialogues. Your sharp retorts earn you a reputation of straightforwardness. On the relations' area, your quick wit and your mobility are greatly appreciated. You find the allies and partners you need at the right time. An art of resourcefulness



that is precious...

## **Your Goals, Motivations, Career, and Destiny**

### **Your Sun is posited in the 10th House**

Vincent van Gogh, your need for assertion is very strong. It is clearly oriented towards the success of your professional or social destiny, or at least, towards an important rise compared to your initial background; your effort, your will and your goals are well defined in your mind: you have a concrete vision of the kind of destiny you are interested in and you do not want to stay on the backstage! Because in traditional astrology, the Midheaven relates to the mother, should other configurations of your chart concur, your mother might favour your ambition or speed up the success of your career.

You have an innate sense of commandment and a definite taste for honours, prestige, recognition of your self-worth. You don't like vagueness and your objectives are very concrete. You want to quickly leave anonymity and the quietness of the dark, for which you have no affinity. Your determined attitude, and your irresistible desire to play an increasingly important role in the position you hold, are major assets for the actual achievement of your goals. You want to shine forth and to heave yourself up, always higher and higher.

There are real indications of fame, provided that other elements of your chart concur. Even though you did not rise to fame, it is likely that, in your area, you enjoy some degree of glory. You are efficient and, with the help of your organizational skills, it is not difficult for you to find your spot in the sunshine.

In some rare cases, your ascent goes beyond the average ones and it may occur on the spiritual plane instead of the professional or the social plane. Therefore, you may be called upon to play a solar authority role in line with your beliefs and your commitment. You may become a leader or a master in the path you have chosen.

Even though you may hesitate to admit it and to tell others, your frenzied inclination for success inevitably brings about conflicts of authority; striving to heave yourself up, too high and too quickly, to a level that is so different from the one you were at, not so long ago, exposes you to clashes with the hierarchy or with those whom you regularly outgrow in the course of your ambitious journey and who may not agree with you.

There is also the fearsome and dormant danger of exhilaration of power and its disastrous consequences; hopefully, you do not have to jump into it with both feet. A fair dose of detachment and meditation may spare you many a trouble.

## The ruler of your chart is in the 6th House

The ruler of the Ascendant, also referred to as the chart ruler as explained in a previous chapter, is also posited in one of the twelve Houses of the chart. Just like the Sun in his House, the ruler of the Ascendant provides certain abilities, or it makes you appreciate more keenly certain areas of life.

The ruler of your chart is in the 6th House, Vincent van Gogh. This position gives you the desire to be helpful, and turns you into a perfectionist concerned with details and with work well done. Domestic routine and exchanges with colleagues - if you are working - is an important element of your fulfilment. You may be interested in health matters.

## Aspects influencing your ambitions

Regarding your destiny or your career, the following aspects of your natal chart allow to fine-tune what has just been said above:

### ★★★★★ Mars conjunction Midheaven, orb 3° 51'

Your dynamism and your capacity for action work wonders and serve your interests, thanks to the conjunction of Mars with your Midheaven, Vincent van Gogh. You undoubtedly have strong courage and fighting spirit, which enables you to achieve your professional goals, or your career progression, even though they imply struggles. More often than not, you triumph. As the French saying goes, "We triumph without glory when we conquer without danger"... Nevertheless, do not be too reckless. There is also a possibility that your profession is related to activities symbolised by Mars, such as the police, fire-fighting, surgery, metallurgy, the military, butchery, competition sports, etc.

### ★★★★★ Moon square Midheaven, orb 1° 32'

There is a dissonance between the Moon and your Midheaven, Vincent van Gogh. It may indicate a discrepancy between your sensitivity and the goals you set for yourself in life, although this dissonance seldom plays out dramatically. You may feel that your emotions sometimes catch you off your guard in society, and that the level of your popularity is not too satisfactory, without your knowing the reasons why. In some cases, females may thwart your social ascent.

### ★★★★★ Jupiter square Midheaven, orb -1° 59'

Jupiter, the planet of law and social achievement, is in mild dissonance with your Midheaven, Vincent van Gogh. You may experience difficulties in climbing up the steps of your social status, or in having your true worth fully recognised. There is definitely nothing serious to worry about. It is up to you to remain self-confident and not to be too impatient. With effort and perseverance, you can reach serenely the goals you have set for yourself. The only mistake you must avoid with this configuration is to jump the gun and to forget hierarchy and laws, or just to underestimate the work you must put in to that end.

### ★★★★★ Venus conjunction Midheaven, orb 5° 47'

With Venus in conjunction with your Midheaven, Vincent van Gogh, it is all your natural warmth, or just your natural way to express your feelings, that is well received in society. This usually enables you to shine with happiness in your professional circles, or to accomplish your social destiny with reliable assets. It may be that a female, or the fair sex in general, favours your career progression and helps you because your personality arouses spontaneous sympathy. The professions you thrive in are of a Venusian nature, meaning that you deal with the world of beauty, the arts, pleasures, fashion, aestheticism...

★★★★★ Uranus semi-square Midheaven, orb -0° 28'

Uranus is in hard aspect with your Midheaven, Vincent van Gogh. There is definitely nothing serious to worry about. There may be a lack of perseverance in the efforts you put in order to move forward in your career or your social destiny. When unexpected hurdles crop up, more than anyone else, you must accept the unavoidable changes without losing sight of your aims, and above all, without getting disheartened. More than anyone, you must learn to accept the values of time and duration, if you are to reap their fruits.

★★★★★ Neptune conjunction Midheaven, orb 10° 02'

Neptune is in conjunction with your Midheaven, Vincent van Gogh. This aspect indicates that your vision of your career and your destiny is idealistic. You seem to adhere to some sort of poetic - and happy - fatality regarding huge changes or your progression towards success. As a consequence, achievements may be beyond your... will. If your professional or social circle fits your ideals, it is very likely that you experience brilliant successes in a sort of euphoria and a feeling of fusion with the world. Sometimes, this aspect indicates that your career is of a Neptunian nature, meaning that it is related to the sea, water, the world of ambiances (night-clubs, show-business, revels, etc.)

## Your Assets and Your Part of Joviality

This is the best possible position for the planet of Greater Fortune in your chart, Vincent van Gogh! It offers a lot of human warmth (or it counterbalances introversion, if such propensity is indicated elsewhere in your chart), the taste for travels, optimism, vitality and an enterprising mind. You are mobile and you have a large vision. Wisdom starts with the ability to consider life from a different angle and to put all things into perspective!

For you, Vincent van Gogh, nature's present is the luck of the devil that protects you against illnesses and brings about joie de vivre in your daily work. Therefore your health and your work environment are constant sources of satisfaction. Your value is duly appreciated, and you are popular and helpful.

The planet Jupiter symbolizes expansion, broadness and generosity. Jupiter is associated with the functions of synthesis, enthusiasm and optimism. In your natal chart, his house position is more important than his sign position because, like Saturn, Uranus, Neptune and Pluto, he is a slow planet. Many people born in the same period have Jupiter in the same sign. This is the reason why the sign occupied here is less meaningful than when it is occupied by the so-called fast planets, i.e. the Sun, the Moon, Mercury, Venus and Mars. Therefore, some caution is to be exercised as you read what follows.

Jupiter in Sagittarius is very popular because he rules this sign, and, according to the Tradition, he is most potent and at his best. He endows you with all his natural qualities: enthusiasm, sense of humour, boldness, warmth, optimism, leadership, synthesizing mind, but also, propensity for travels or, symbolically, disposition for higher knowledge and matters such as spirituality, philosophy, politics or religion.

## Your Serious Side

Material, practical or frivolous matters (comfort etc.) are highlighted. Obstinacy, even stubbornness, and the instinct of possession may get you into trouble. On the other hand, you can learn how to step back and to improve the practical management of your assets.

As soon as you become a member of a community, and when you are surrounded with people or with friends, you instinctively protect yourself, and you even hide, Vincent van Gogh. There is nothing you can do against this. In public, you do not show your real face, but in friendship, you are loyal and reliable.

You prefer quality to quantity, and your friends have every reason to be happy that they won your confidence because they know that they can rely on you under all circumstances. Your friends are usually much older and more seasoned than you.

The planet Saturn symbolizes contraction, effort, time, limitation and concentration. Saturn eliminates anything that is not authentic, sooner or later. It is impossible to cheat him as he gives an irresistible desire to form a coherent whole with oneself, in responsible and wise ways. He is the great purifier. He represents our limitations but also our truth. In your natal chart, the house position where Saturn is posited is more important than his sign position because, like Jupiter, Uranus, Neptune and Pluto, he is a slow planet. Many people born in the same period have Saturn in the same sign. This is the reason why the sign occupied here is less meaningful than when it is occupied by the so-called fast planets, i.e. the Sun, the Moon, Mercury, Venus and Mars. Therefore, some caution is to be exercised as you read what follows.

Saturn in Taurus decreases your appetite for material things but he endows you with more caution and wisdom in the financial area in general. He also gives you a more obstinate and deeper nature.

## A Few Special Points

### Your Uniqueness and Your Utopias

Powerful protections, friendships, and supports are granted to you at a jerky rhythm throughout your life. There may also be break-ups that are as brutal as they are easy to forget because you manage to ensure that your contacts are brilliantly revived.

The friends you meet have strong personalities, or they may be quite special persons; indeed, you think of friendship as a rich and varied soil in which everyone must bring one's own contribution with one's touch of originality and difference. Otherwise, what's the use?

The danger is that you may embark upon projects that you cannot see through in the long run because they are too utopian. You may also count on partners who are too eccentric to be reliable. Or, on some occasions, you may show too much independence of mind or a boldness that is too strong to really last.

With this typical configuration, your popularity may fluctuate and disappear as quickly as it comes. It is up to you to set the limits of originality that you must not overstep, lest you should undergo unfortunate consequences.

## Your Inspiration and Your Illusions

Your concepts and ideas in politics, philosophy and, generally speaking, higher knowledge and abstract matters, are your sources of inspiration. But at the same time, your mind is a bit confused and unmethodical in these areas.

Remote lands, evasion, literally (long distance trips) or figuratively (higher knowledge) give you a confused feeling of the infinite, of fusion and communion with the world at large; the danger is that you may get lost. You must be cautious when you travel, and you should try to step back in order not to go astray when you deal with big concepts and ideals.

There is a strong tendency towards idealization, with many assets and many dangers at the same time.

## Your Passion and Your Authority

Your approach to friendship is peculiar, and your affective tendency is to commit yourself in an intense and passionate way. In other words, you do not want to, or you cannot be satisfied with a light and superficial friendship where you lose sight of your friends or meet with them sporadically. It is all or nothing, with you. Preferably all, of course, with the potential for evolution and transformation for both you and your friends.

In most cases, all is well, as long as your friends' character puts up with a relationship that may appear as burdensome, or even threatening, due to your desire for domination. You tend to influence your friends and to show your might. When they resist you or antagonize you, it is hard for you to remain cool.

Passion and friendship certainly get along well and, more generally, you may exercise your influence and play a major role in team works, within collective projects.

Your friendships, as well as the supports and protections granted to you, are likely to bring about both the better and the worse. If you are aware of that, you may become able to choose only the better.

## Your Isolated Planets

In general, the ten planets of the chart are connected to other planets by major or minor astrological aspects. It is owing to those ties that the planets' energies can manifest in the chart owner's personality and play out within safeguards according to a specific tonality.

It seldom happens that in a natal chart, a planet is totally disconnected from the nine other planets.

Astrologers have observed that when such a case occurs, the person feels the energy of the unaspected planet in quite a singular way, very jerky and powerful at the same time. Thus, for instance, the famed astrologer Jean-Baptiste Morin de Villefranche wrote that "an unaspected planet heralds that something strange or extraordinary will take place regarding the meanings of the house in which the said planet is posited" (source : l'astrologie selon Morin).

Rules for detecting an unaspected planet: among all the testimonies that we have reviewed to this day,



based on our experience, we tend to agree with American astrologer Janis Huntley who accepts seven aspects, which involve the zodiacal twelve sections of 30 degrees. The aspects to be considered are the conjunction (0 degree, cooperation or tension), the semi-sextile (30 degrees), the sextile and the trine (60 and 120 degrees respectively, aspects of cooperation), the square and the opposition (90 and 180 degrees respectively, tensed aspects), and the quincunx (150 degrees, slightly tensed). In this detection, the chart's angles are not taken into account.

In any case, it is important to remember that an isolated planet clearly expresses its influence when it is a personal planet. Thus, when the Sun, the Moon, Mercury, Venus, or Mars is isolated, it is certain that the effects described by Jean-Baptiste Morin de Villefranche will become manifest. As for Jupiter, Saturn, Uranus, Neptune, and Pluto, one must be cautious because the volume of cases documented is not yet large enough.

### **In your natal chart, the Sun is unaspected**

When the Sun is unaspected in the natal chart, its characteristics, both assets and weaknesses, are increased. The person's charm, magnetism, and charisma are strengthened and facilitate his success in society. See the example of the Sun-King, Louis XIV, who had the Sun unaspected in Virgo (with an orb smaller than 6 degrees for his sextile to Neptune), or Vincent Van Gogh.

However, this principle may be inverted under the influence of transits or progressions. At such crucial times, the Sun's negative features prevail, in which case social maladjustment, paralysed willpower, unawareness of one's rude character or behaviour, self-centredness, egoism, and vanity erase the natural benefits of the Sun left to his own devices.

## Annex 1: Your Minor Dominants

The five following dominants are less significant than those described at the beginning of your report. They may not be strongly felt. In some cases, they add several minor details to the analysis of your character, but they are rather for curiosity purposes. It is not necessary to take them into account when you first read your portrait.

### Your Planetary Repartitions: Northern, Southern, Eastern and Western Hemispheres

The axis linking the 1st house's cuspid (the Ascendant) to the 7th house's cuspid - the Descendant - divides the zodiac into two bowls, a superior bowl, in the South, and an inferior bowl in the North. Quoting an expression by the famous American astrologer Rudhyar, the Southern part and the Northern part correspond to two functions: "being" and "doing". Other concepts are also associated with this North and South distribution, such as introversion - Northern hemisphere - and extraversion - Southern hemisphere - being or appearances, inner life or external life, reflection or action, dreaming one's life or living one's dreams, the abstract or the concrete, backstage or limelight.

This is not about determination but about personal inclination: thus, some people will be thrown into public life despite a prominent Northern hemisphere. If this happens, however, it will not be due to their will, their taste or their deep nature. Conversely, a prominent Southern hemisphere will not bring about a famous destiny to its owner, even if he tends to turn the spotlight on himself, or if he looks for a more active life. It is a matter of deep nature and natural inclination. Of course, none of the typologies is "superior" to another.

In your birth chart, Vincent van Gogh, the ten main planets are distributed as follows:

### Your Northern and Southern Hemispheres



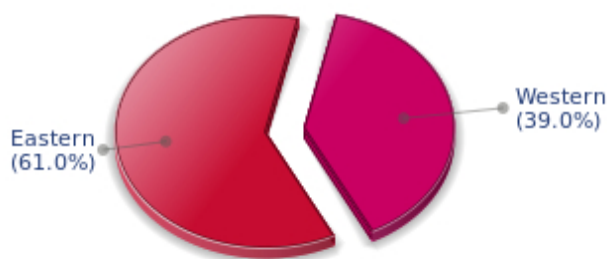
Vincent van Gogh, the predominance of planets in the Southern hemisphere prompts you to take action, to draw attention on yourself, and to make your actions and what you have in mind visible to everyone. Sometimes, without giving a single thought to, and to the detriment of, a richer inner life and a deeper and wiser reflection. Action and communication are inevitable in your opinion, and you tend to think that the only thing that matters is what is seen! This is not always true, and it is up to you to progress through the development of inner qualities such as meditation, solitude and imagination so as to become stronger.

The birth chart is divided into two other parts, Eastern and Western, by the axis linking the Midheaven to the Imum Coeli.

The Eastern part, on the Ascendant side, shows the person's ego, will, magnetism, and vitality, whereas the Western part, on the Descendant side, symbolizes other people, communication, relationships and their influence, as well as flexibility and adaptability.

Vincent van Gogh, here is the planetary repartition in your Eastern and your Western hemispheres:

### Your Eastern and Western Hemisphere:



The predominance of planets in the Eastern hemisphere of your chart enables you, Vincent van Gogh, to assert yourself and to rely on your determination: you know what you want and you have a tendency to take action and to decide with your personal goals as priorities, even if they can be in contradiction with what others think.

A definite asset... provided that you never make mistakes in your choices. You should pay more attention to your entourage in order to counterbalance your nature and to take advantage of your assets wisely. The danger is that you may be too authoritarian and not conciliating enough. Strong determination coupled with flexibility and acute sense of communication are qualities you should develop.

### Your Yin and Yang Polarity

The twelve signs are divided into two polarities, called active or passive, or sometimes masculine and feminine, positive and negative, Yang and Yin. This classification corresponds to two quite distinct tonalities, the first one bringing extraversion, action, self-confidence and dynamism, the second one, introversion, reactivity, reflection and caution. None is superior to the other, each group has its own assets and shortcomings. Odd signs - Aries, Gemini, Leo, Libra, Sagittarius and Aquarius - belong to the first group, whereas even signs - Taurus, Cancer, Virgo, Scorpio, Capricorn and Pisces - belong to the second group.

## Your Yin and Yang Polarity



According to the disposition and qualities of your planets and angles, you are rather influenced by Yin energy, the passive polarity, Vincent van Gogh: you are quite introverted, imaginative and sometimes discreet, but you are a deep and wise person who is not content with just noisy and flashy things. At times, you doubt but you think that those who don't are a bit... thoughtless. Allow yourself to take more laid-back attitudes and put your reserve aside, because good equilibrium is always healthier.

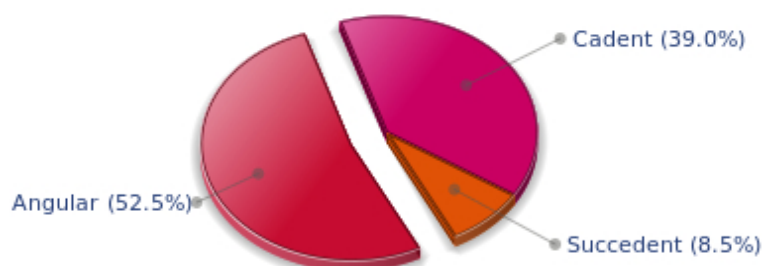
### Your Houses' Accentuations

Houses are split up into three groups: angular, succedent and cadent.

The first ones are the most important ones, the most "noticeable" and energetic houses. They are the 1st, 4th, 7th and 10th houses. Their cuspides correspond to four famous angles: Ascendant for the 1st house, Imum Coeli for the 4th house, Descendant, opposite the Ascendant, for the 7th house and Midheaven for the 10th house, opposite the Imum Coeli.

Planets are evaluated according to a whole set of criteria that includes comprehensive Western astrology rules. At their turn, planets emphasize specific types of houses, signs, repartitions etc., as previously explained.

## Your Houses' Accentuations



Your angular houses, namely, the 1st, 4th, 7th and 10th houses, are very emphasized in your chart, Vincent van Gogh: according to the Tradition, they are the strongest and most dynamic houses. Should the rest of your chart concur, angular houses suggest that you are an enterprising, energetic and assertive man. Indeed, angular houses are said to generate impulses and to give a powerful and domineering personality.

Unusual fates are often linked to a predominance of angular houses, but this is only a partial indication...

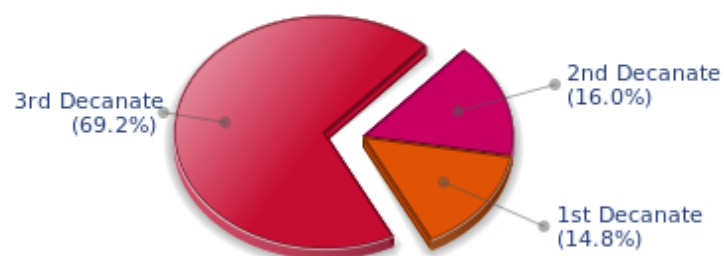
### Your Esoteric Decanates

Each sign contains 30 degrees and can be divided into three equal parts: the decanates. The Tradition indicates that specific meanings can be associated to each of the three decanates. Their sphere of activity is usually limited to the Sun sign, however, it is even more interesting to observe the distribution of all the planets in the chart to get an idea of the respective importance of the three decanates, which can complement the description of the personality.

These meanings must be considered with the greatest caution. Indeed, they are minor characteristics that can only underline other outstanding traits of character.

Traditionally, the first decanate highlights the characteristics of the sign where a planet is located. The two other decanates correspond to sub-dominant planets, depending on the nature of each sign. This system leads to a multiplication of meanings and it is impossible to have a clear understanding: here, we prefer to give only the meaning of one decanate in comparison with the other two, within the birth chart as a whole. Again, the greatest caution is needed with regard to this minor indication as it is not always reliable: it is not essential that you read these texts in the beginning. You can get back to them later on, once you have read more important interpretations

### Your Esoteric Decanates



The third decanate, which means the part between 20° and 30° of any zodiacal sign, prevails in your natal chart, Vincent van Gogh. It contains the degrees of spirituality, traditionally more delicate to deal with, since they incline towards evolution and therefore, destabilizations. Individuals with an emphasised third decanate may have deeper sensitivity than most people, which often brings ordeals but also spiritual rewards.



## Annex 2: Karmic Study

The karmic theme is a good complement to the psychological portrait, or natal chart. This analysis is based on the positions of the Lunar Nodes, the Black Moon and the Part of Fortune: they are also called fictitious points and describe the spiritual purpose of your destiny. Because there is in all of us an experience and a quest, our life is an evolutionary journey... provided that we head towards the right direction, of course! Indian astrologers highly prize the Nodes axis (North Node and South Node). It is the Ariadne's thread that we are invited to follow. The Black Moon indicates the sector where we are most likely to transform or to transcend, whereas the Part of Fortune points out the area where we can easily express our specificity.

### The Lunar Nodes: a spiritual path

Lunar Nodes have their roots in the Indian tradition and they are based on a simple concept: each of us have a mission of their own, here on earth, a destiny, a course. According to the Indian philosophy, life is a school: the nodal axis describes our past experiences (South Node, our karma, our spiritual inheritance or our previous lives), and our aims on earth (North Node, our Dharma, the purpose of our current incarnation). This is the reason why the study of the lunar nodes is called "Karmic astrology". Here, we shall not step into hypothetical past lives. Wherever our current trends may come from, all that really matters is that we become aware of the purpose of our life, its finality and our dharma. We are likely to understand our life purpose around the age of 37, when the Lunar Nodes return to their natal position.

The Lunar Nodes highlight all types of discoveries and explorations. There is a strong desire for travels, whether actual trips or spiritual, inner ones. Since your childhood, you are particularly interested in unlimited spaces and total freedom. You never trusted smothering attachments and you always allow your thoughts and actions a free hand. The danger is that your life may be unstable because you so badly need to evolve and to discover... Life is an eternal quest of something else, some vital but hidden dimension that is beyond you. Therefore, it is difficult for you to blossom when your family or work environment is routine. However, it is important that you control your wild tendency (the other side of the coin of the wonderful freedom of thought): life requires more sociability. It does not mean that you must accept a conformism that is too far from your inner aspirations. More than other people, you need to develop your relations, your exchanges and your dialogues. In this regard, your destiny is marked by communication.

Your doings indicate the challenge to dedicate an important part of yourself to devotion and abnegation. Life imposes a few sacrifices on you, whether agreed upon (and voluntarily taken up) or imposed by daily vagaries. Very early you showed a sharp critical sense and your attitudes were rational, logical and reasonable, although individualistic. As time goes by, you learn to make concessions and to offer an essential part of yourself so as to outgrow the "every man for himself" principle. Ordeals are meaningful: people may not respond to your games and your entourage may thwart your plans and your ambitions... You may need to achieve the "old souls" detachment, those beings who have learnt that only essentials are to be kept – inner life or survival- and who know that this world "petty things" are vain. Better than anyone else, you cope with situations of crisis because, whatever the circumstances, there is a hidden spiritual dimension and a springboard for evolution. You will slowly get to know the art of accepting things without going back on what you have said or done. Compassion and altruism become the central theme of your life.

## Lilith or the Dark Moon

The Black Moon is the spark of refusal and distance that is dormant in all of us. Depending on the sign where she is found in your chart, she highlights the desire to transform and to sublimate a part of your life. The Black Moon is unfathomable and mysterious. She gives a different dimension to the sector she touches. Her manifestations are subtle; nonetheless, she is powerful, implacable, demanding to the extreme... The Black Moon is also called Lilith. She is the inner flame of your heroism and insubordination.

Your refusals are irrevocable: you may show violence when the situation is stuck... When facts hamper your aspirations, when everything does not seem to start moving soon, you tend to force your ways through events, regardless of the price to be paid. Your strengths and your weaknesses stem from all that: you may exercise a misplaced extremism, claiming great causes, whereas order can be restored in the simplest of ways. However, better than anyone else, you know how to maintain the pressure whenever it is needed, when the desire for deep changes takes precedence over submission or abdication.

You have the feeling that you are different from your entourage because you are in charge of both a special mission, and an extraordinary destiny. This configuration may indicate an immoderate pride (when the Black Moon is not well integrated enough). However, when she is well integrated (and she will be, as time goes by), the Black Moon forges an exceptional destiny that implies sacrifices, asceticism and solitude to some extent. The danger is to show too strong an intransigence and to be unable to forgive your entourage's weaknesses as well as your own. But it is also where your strength is found: an innate sense of duty, regardless of the price to be paid for a slow ascension.

## The Part of Fortune in House

The Part of Fortune is a very ancient fictitious point that depends on the lunar phase at the time of birth. The astrological house tenanted is particularly strengthened. In your chart, the Part of Fortune is in the 10th house: you give top priority to your social status and to the level of your "rank". You are very ambitious and you have every chance to achieve social and professional successes. You identify yourself with the part you are to play and with the expectations of your environment. Therefore, you can fully blossom through the adherence to the collective pattern that you are the first one to understand and that you personify. In other words, deep down, you are what your entourage admires and respects: you have a job that is "under the spotlight" and you fulfil your responsibilities as if you were in charge of a "mission".

## Conclusion

A few remarks are needed here in order to allow you to fully take advantage of your astrological portrait: firstly, do not forget that a birth chart is also a photograph of the sky at birth and a structure that not only contains the personality's characteristics, but also its potential evolution.

We all know that, in real life, people begin to know themselves when they are in their forties, or even later. Likewise, several traits of character in a portrait may seem surprising: in most cases, it means that such features are not yet developed.

Some personalities reveal themselves late in life, whereas others are more precocious. It must be remembered that psychological structures are in a state of continuous evolution because they are influenced by unfolding events and gradual maturity. We can never underline strongly enough the "mobile" nature of the personality, throughout a lifetime.

On the other hand, it is difficult to discriminate what is "already present" at this moment in your life when you are reading your chart's interpretation, from what will appear later in the logic of your evolution: you must sort out all the pieces of information provided and, in most cases, you will see that your astrological portrait is helpful for your endeavours to know yourself better.

Finally, several readings of an astrological portrait are usually necessary in order to absorb all its different meanings and to evaluate the relevance of each character trait.

In any case, better self-knowledge obviously contributes to faster personal blossoming, and it is undoubtedly one of astrology's major roles: contributing to know oneself better, in order to improve more rapidly, to deal with one's weaknesses and to avoid its drawbacks, and to take advantage of one's assets as efficiently as possible.

---