

**Tom Cruise's
Astrological Portrait**





Tom Cruise's Astrological Portrait



Introduction	2
Your Planets, Houses, Aspects, and Natal Chart	4
Preamble	6
Your Planetary Repartitions	7
Your Dominant Modes and Elements	8
Your Dominants: Planets, Signs and Houses	9
Your Style, Behaviour, and Peculiarities	14
Your Sensitivity	18
Your Affectivity	18
The Way You Take Action and Your Sexuality	20
Your Intellect and Your Communication Style	21
Your Goals, Motivations, Career, and Destiny	22
Your Assets and Your Part of Joviality	25
Your Serious Side	26
A Few Special Points	26
Your Isolated Planets	27
Annex 1: Your Minor Dominants	29
Annex 2: Karmic Study	33
Conclusion	36



Tom Cruise's Astrological Portrait

Introduction

To fully benefit from this portrait, we suggest that you read its introduction and its preamble carefully, and then that to take the time to soak up the interpretations of each chapter. Given the large number of texts, which mirrors the human being's complexity, you may need to go through the contents several times, so as to get a good grasp of their meaning and to know yourself better. This will reward your patience.

The purpose of this report is to describe your psychological portrait and to highlight the most fundamental features on the personal area. The report begins with the analysis of your planetary dominants and outlines your personality's general traits before going into further detail. Minor dominants are analysed at the end of Annex 1, for purposes of clarity. Your report then delineates the various facets of your personality:

In general, even when relationships are not involved, we express ourselves and we feel according to our character and our personal motivations: this is indicated by the Ascendant and the Sun sign which both give details on the way we function. They shed a tremendously important light which allows to figure out your personality. Here, we describe your Sun sign (your inner self), your Ascendant (your behaviour as seen by others), and the ruler of the Ascendant (interesting additional pieces of information about the style of your personality). These descriptions alone cover nearly a third or a half of your psychological signature, depending on your natal chart characteristics.

Then, we address your sensitivity, or in other words, the way you receive things and how you express your emotions ; it works as a constant filter for all your exchanges, even when it becomes a more secondary element in your amorous relationship, because at that moment, affectivity prevails. Sensitivity is the way you perceive things, it is your radar, your daily mood, and at the same time, it indicates how you react to your entourage, on a daily basis. It is what others immediately see of you. In the second paragraph, we explain in which areas of life your sensitivity and your emotions are strongest, therefore, where you are most vulnerable.

After this, it is your affectivity, the way you love and how you charm, that comes into play as soon as you fall in love: the first part indicates its basic structure or its main form. The second part describes the areas where it is best expressed and how you display it, according to your personality.

A third fundamental area deals with your mode of action and your sexuality: how you behave, how you manage to obtain what you want, what kind of desires you have. There are twelve possibilities, very

different from one another. The study discloses the specific one that applies to you. In the second paragraph, we explain in which life areas you may most efficiently take advantage of your capacity for action and for conquest.

Your ways of communicating and of thinking are obviously among the major elements that must be integrated into the delineation and the description of your personality. Indeed, they influence your general behaviour and may modify or enhance the image your project (for instance, extraversion may “compensate” a weak affectivity, but a huge number of cases are possible). An additional chapter indicates the favourite areas where you enjoy communicating, thinking and meeting with people.

Besides, we analyze an even more personal aspect that is important to define and understand what may occur within your couple: each of us have a centre of interest, a privileged manner to be fulfilled or to achieve our destiny; this main motivation is indicated by the positions of your Sun and your chart ruler in the astrological houses and we provide you with its detailed description.

A natal chart contains the potential for specific fulfilment and a whole range of assets, protections and qualities. How does the lucky factor manifest in your personality? In which area can you best exploit your qualities? The answers are precisely revealed to you in this chapter.

On the other hand, we all feel in us a part of vulnerability, doubts and fears. How does this part of solemnity or serious side play out? How is it possible to handle it in order to evolve and to get rid of useless elements? All this information is provided to you in these two paragraphs.

Then, you can discover three additional traits of your personality that must be considered as secondary ones. They deal with your predispositions, which means that they need to be triggered by external events because they are not influenced by your will; let's call it a part of fate. Please, bear in mind that your destiny can unfold only in accordance with what you are: therefore, even if they belong to your more unconscious self, these characteristics are parts of you, definitely.

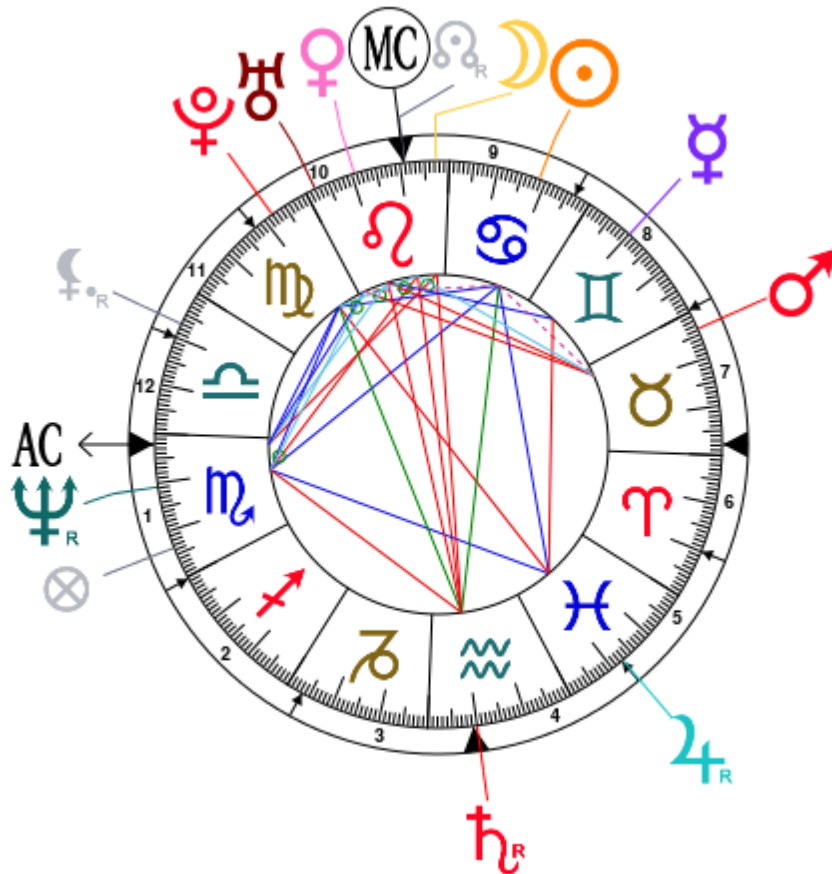
The karmic chart complements the psychological portrait or natal chart. It is based on the positions of the Lunar Nodes, the Black Moon, and the Part of Fortune. These elements of the chart, sometimes referred to as fictitious points, provide information about the spiritual meaning of your destiny. Owing to the fact that we all have in us acquired knowledge and the urge to go on a quest, our life is an evolutionary journey... However, these texts must be read with great caution: this is the reason why you will find this analysis in the Annex 2 of your report.

Your Planets, Houses, Aspects, and Natal Chart

Tom Cruise, born July 3, 1962, at 03:06 PM, Syracuse (Onondaga), New York [76.08W ; 43.02N ; 4W00]

Natal Planets				In House	Natal Houses (Placidus)	
☉ Sun	11°21'	♋ Cancer	House 9	House 1	2°11'	♏ Scorpio
☾ Moon	2°43'	♌ Leo	House 9	House 2	0°25'	♐ Sagittarius
☿ Mercury	19°53'	♊ Gemini	House 8	House 3	3°26'	♑ Capricorn
♀ Venus	19°26'	♌ Leo	House 10	House 4	9°15'	♒ Aquarius
♂ Mars	26°12'	♉ Taurus	House 7	House 5	12°28'	♓ Pisces
♃ Jupiter	12°41' R	♓ Pisces	House 5	House 6	10°01'	♈ Aries
♄ Saturn	10°01' R	♒ Aquarius	House 4	House 7	2°11'	♉ Taurus
♅ Uranus	27°56'	♌ Leo	House 10	House 8	0°25'	♊ Gemini
♆ Neptune	10°49' R	♏ Scorpio	House 1	House 9	3°26'	♋ Cancer
♇ Pluto	8°02'	♍ Virgo	House 10	House 10	9°15'	♌ Leo
♁ Node	9°03' R	♌ Leo	House 10	House 11	12°28'	♍ Virgo
♇ Lilith	7°06' R	♎ Libra	House 11	House 12	10°01'	♎ Libra
AS AS	2°11'	♏ Scorpio				
MC MC	9°15'	♌ Leo				

In keeping with the common practice, we consider that a planet posited within 1 degree of the next house belongs to that house. We allow an orb of 2 degrees for the ASC and the MC.



List of Your Active Planetary Aspects

Please find below the list of all the active inter-aspects which are interpreted in this report, in addition to your planets in sign, in house, and all your planetary dominants. Since the aspects between slow-moving planets are of a collective nature, they are not displayed, in compliance with our interpretation rules.

- ★☆☆☆☆ Sun semi-square Mars, orb 0° 09'
- ☆☆☆☆☆ Sun trine Jupiter, orb -1° 19'
- ★☆☆☆☆ Sun inconjunction Saturn, orb 1° 2'
- ★☆☆☆☆ Sun semi-square Uranus, orb 1° 34'
- ☆☆☆☆☆ Sun trine Neptune, orb -0° 32'
- ☆☆☆☆☆ Sun sextile Pluto, orb -3° 19'
- ★☆☆☆☆ Moon opposite Saturn, orb -7° 17'
- ★☆☆☆☆ Moon square Ascendant, orb -0° 31'
- ☆☆☆☆☆ Moon conjunction Midheaven, orb 6° 31'
- ☆☆☆☆☆ Mercury sextile Venus, orb -0° 27'
- ★☆☆☆☆ Mercury square Jupiter, orb 7° 12'
- ★☆☆☆☆ Venus square Mars, orb -6° 45'
- ★☆☆☆☆ Venus opposite Saturn, orb -9° 25'
- ☆☆☆☆☆ Venus conjunction Uranus, orb 8° 29'
- ☆☆☆☆☆ Venus quintile Ascendant, orb 0° 45'
- ☆☆☆☆☆ Venus conjunction Midheaven, orb 10° 11'
- ★☆☆☆☆ Mars square Uranus, orb 1° 44'
- ☆☆☆☆☆ Mars quintile Midheaven, orb 1° 03'
- ☆☆☆☆☆ Saturn opposite Midheaven, orb -0° 45'
- ☆☆☆☆☆ Uranus sextile Ascendant, orb 4° 15'
- ☆☆☆☆☆ Neptune conjunction Ascendant, orb 8° 37'
- ★☆☆☆☆ Neptune square Midheaven, orb 1° 34'
- ☆☆☆☆☆ Pluto sextile Ascendant, orb -5° 5'
- ☆☆☆☆☆ Pluto semi-sextile Midheaven, orb -1° 13'

Meaning of Stars

Stars indicate the strength of the aspects. Two solid coloured stars (there are half-stars also), mean that the aspect is powerful enough to be noticed at the first reading.

We strongly advise that you read the paragraphs displaying less than two stars later on, after you have absorbed the full import of the other texts.

The yellow colour indicates a soothing and conciliating aspect, and the red colour, a dynamic and tense aspect. The red aspects enable you to evolve, to take action, and to learn to turn your "weaknesses" into assets through your life experiences. The yellow aspects are innate strengths on which you rely in order to grow better with the former...

Preamble

When interpreting a natal chart, the best method is to start gradually from general features to specific ones. Thus, there is usually a plan to be followed, from the overall analysis of the chart and its structure, to the description of its different character traits.

In the first part, an overall analysis of the chart enables us to figure out the personality's main features and to emphasize several points that are confirmed or not in the detailed analysis: in any case, those general traits are taken into account. Human personality is an infinitely intricate entity and describing it is a complex task. Claiming to rapidly summarize it is illusory, although it does not mean that it is an impossible challenge. It is essential to read a natal chart several times in order to absorb all its different meanings and to grasp all this complexity. But the exercise is worthwhile.

In brief, a natal chart is composed of ten planets: two luminaries, the Sun and the Moon, three fast-moving or individual planets, Mercury, Venus and Mars, two slow-moving planets, Jupiter and Saturn, and three very slow-moving planets, Uranus, Neptune and Pluto. Additional secondary elements are: the Lunar Nodes, the Dark Moon or Lilith, Chiron and other minor objects. They are all posited on the Zodiac wheel consisting of twelve signs, from Aries to Pisces, and divided into twelve astrological houses.

The first step is to evaluate the importance of each planet. This is what we call identifying the dominant planets. This process obeys rules that depend on the astrologer's sensitivity and experience but it also has precise and steady bases: thus, we can take into account the parameters of a planet's activity (the number of active aspects a planet forms, the importance of each aspect according to its nature and its exactness), angularity parameters; (proximity to the four angles, Ascendant, Midheaven, Descendant and Imum Coeli or Nadir, all of them being evaluated numerically, according to the kind of angle and the planet-angle distance) and quality parameters (rulership, exaltation, exile and fall). Finally, other criteria such as the rulership of the Ascendant and the Midheaven etc. are important.

These different criteria allow a planet to be highlighted and lead to useful conclusions when interpreting the chart.

The overall chart analysis begins with the observation of three sorts of planetary distributions in the chart: Eastern or Western hemisphere, Northern or Southern hemisphere, and quadrants (North-eastern, North-western, South-eastern and South-western). These three distributions give a general tone in terms of introversion and extraversion, willpower, sociability, and behavioural predispositions.

Then, there are three additional distributions: elements (called triplicity since there are three groups of signs for each one) - Fire, Air, Earth and Water - corresponding to a character typology, modality (or quadruplicity with four groups of signs for each one) - Cardinal, Fixed and Mutable - and polarity (Yin and Yang).

There are three types of dominants: dominant planets, dominant signs and dominant houses. The novice thinks astrology means only "to be Aries" or sometimes, for example, "to be Aries Ascendant Virgo". It is actually far more complex. Although the Sun and the Ascendant alone may reveal a large part of the character - approximately a third or a half of your psychological signature, a person is neither "just the Sun" (called the sign) nor just "the first house" (the Ascendant). Thus, a particular planet's influence

may be significantly increased; a particular sign or house may contain a group of planets that will bring nuances and sometimes weaken the role of the Ascendant, of the Sun sign etc.

Lastly, there are two other criteria: accentuations (angular, succedent and cadent) which are a classification of astrological houses and types of decanates that are occupied (each sign is divided into three decanates of ten degrees each). They provide some additional informations.

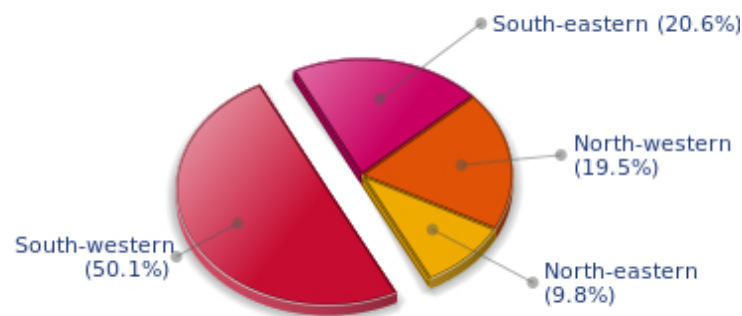
These general character traits must not be taken literally; they are, somehow, preparing for the chart reading. They allow to understand the second part of the analysis, which is more detailed and precise. It focuses on every area of the personality and provides a synthesis of all the above-mentioned parameters according to sound hierarchical rules.

As explained in the introduction of your Psychological Portrait report, minor dominants are analysed at the end of Annex 1, for purposes of clarity.

Your Planetary Repartitions

Each quadrant is a combination of the four hemispheres of your birth chart and relates to a character typology. The Southern hemisphere – the top of your chart, around the Midheaven – is associated with extraversion, action, and public life, whereas the Northern hemisphere prompts to introversion, reflexion, and private life. The Eastern hemisphere – the left part, around the Ascendant – is linked to your ego and your willpower, whereas the Western hemisphere indicates how other people influence you, and how flexible you are when you make a decision.

Your Four Quadrants

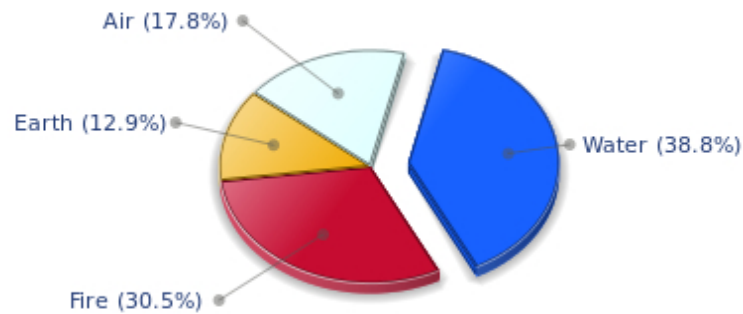


Tom Cruise, the diurnal South-western quadrant, consisting of the 7th, 8th and 9th houses, prevails in your chart: this sector brings about a thirst for communication and sometimes a need to take risks in your dealings with others. Relations are a factor of your evolution and your transformation, which you accept serenely. Indeed, what matters to you is the movement and the energy that link you to others and that make you gain more awareness. A kind of rebellion or a desire to get away from it all is rooted in you.

Your Dominant Modes and Elements

Tom Cruise, here are the graphs of your Elements and Modes, based on planets' position and angles in the twelve signs:

Your Four Elements



The predominance of Water signs indicates high sensitivity and elevation through feelings, Tom Cruise. Your heart and your emotions are your driving forces, and you can't do anything on Earth if you don't feel a strong affective charge (as a matter of fact, the word "feeling" is essential in your psychology). You need to love in order to understand, and to feel in order to take action, which causes a certain vulnerability which you should fight against.

Tom Cruise, Fire is dominant in your natal chart and endows you with intuition, energy, courage, self-confidence, and enthusiasm! You are inclined to be passionate, you assert your willpower, you move forward, and come hell or high water, you achieve your dreams and your goals. The relative weakness of this element is the difficulty to step back or a kind of boldness that may prompt you to do foolish things.

The twelve zodiacal signs are split up into three groups or modes, called quadruplicities, a learned word meaning only that these three groups include four signs. The Cardinal, Fixed and Mutable modes are more or less represented in your natal chart, depending on planets' positions and importance, and on angles in the twelve signs.

Your Modes



The Fixed mode corresponds to a majority of elements in your chart, Tom Cruise, and represents the desire for security and durability: you are able to concretely appreciate a situation and its stability. You definitely prefer to play the role of a loyal, obstinate and hard-working person, rather than to try new and risky experiences - beware, however, not to confuse obstinacy with intransigence. You structure, cement, and strengthen everything you find on your way: it is your nature, although you are not especially interested in swiftness: slow and steady...

Your Dominants: Planets, Signs and Houses

The issue of dominant planets has existed since the mists of time in astrology: how nice it would be if a person could be described with a few words and one or several planets that would represent their character, without having to analyse such elements as rulerships, angularities, houses, etc!

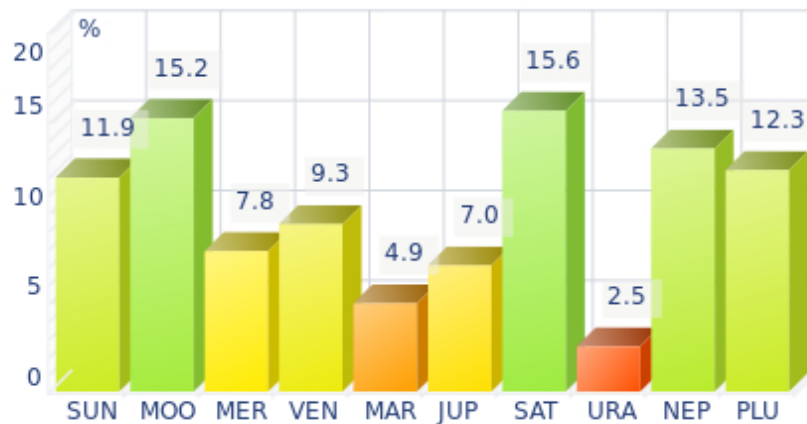
The ten planets - the Sun throughout Pluto - are a bit like ten characters in a role-play, each one has its own personality, its own way of acting, its own strengths and weaknesses. They actually represent a classification into ten distinct personalities, and astrologers have always tried to associate one or several dominant planets to a natal chart as well as dominant signs and houses.

Indeed, it is quite the same situation with signs and houses. If planets symbolize characters, signs represent hues - the mental, emotional and physical structures of an individual. The sign in which a planet is posited is like a character whose features are modified according to the place where he lives. In a chart, there are usually one, two or three highlighted signs that allow to rapidly describe its owner.

Regarding astrological houses, the principle is even simpler: the twelve houses correspond to twelve fields of life, and planets tenanted any given house increase that house's importance and highlight all relevant life departments: it may be marriage, work, friendship etc.

Tom Cruise, here is the evaluation diagramme for your planets:

Your Dominant Planets



The three planets that are most highlighted in your chart are Saturn, the Moon and Neptune.

Saturn is part of your dominant planets: among the facets of your character, you have a grave and serious side, wise and somewhat severe, since your concentration can be powerful, to the detriment of carelessness and friendliness.

You often look austere, but it is only an appearance, a kind of modesty or reserve; however, it is true that the Saturnian, who is fond of time, effort, asceticism, rigour and sobriety, may have popularity issues. Nevertheless, honesty and straightforwardness, reliability, as well as slow, wise and deep mental process, although not very popular and visible qualities, eventually become noticed and appreciated. Saturnians' second part of life is usually easier and more fulfilling.

Like the Jupiterian, your Saturnian facet prompts you to seek the essential, security, and longevity. However, the difference with the former is that you will never give priority to wealth or "the bigger, the better" philosophy for the sake of power. Saturn, like Jupiter, symbolizes social integration, and it is usually considered positive to have a harmonic Jupiter and Saturn in one's chart because of their social adaptation capacities.

Your vulnerability lies in your too serious and austere side, which may lead to unwanted loneliness and affective frustration. This generally does not last because Saturnians often hide deep down a golden heart that ends up revealing itself...

The Moon is one of the most important planets in your chart and endows you with a receptive, emotive, and imaginative nature. You have an innate ability to instinctively absorb atmospheres and impressions that nurture you, and as a result, you are often dreaming your life away rather than actually living it.

One of the consequences of your spontaneity may turn into popularity, or even fame: the crowd is a living and complex entity, and it always appreciates truth and sincerity rather than calculation and total self-control.

As a Lunar character, you find it difficult to control yourself, you have to deal with your moods, and you must be careful not to stay passive in front of events: nothing is handed on a plate, and although your

sensitivity is rich, even richer than most people's, you must make a move and spare some of your energy for... action!

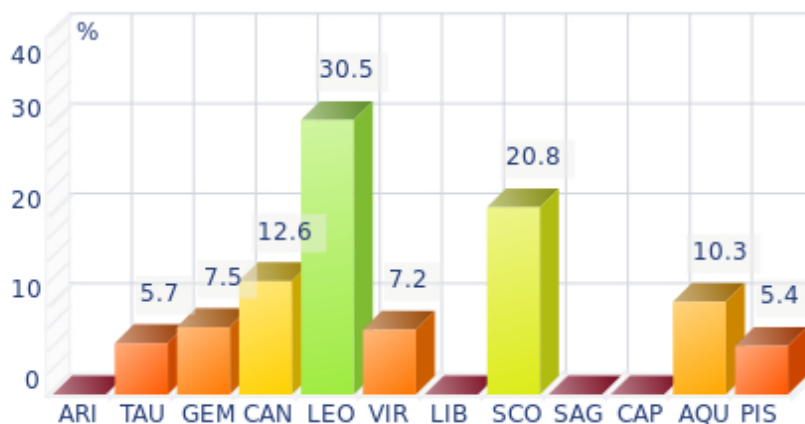
With Neptune as one of your three dominant planets, you are a secretive and ambiguous person, often confused or unclear about your own motivations! Indeed, you are endowed with unlimited imagination and inspiration, as well as with an extreme sensibility that may turn you into a psychic or a clairvoyant. On the other hand, your impressionability is such that you may have difficulties in separating what is concrete and solid from illusions or dreams.

A mystic, a visionary or a poet, you daydream, like any Neptunian, and you see what few people only can see, all of this being shrouded in aesthetic mists when you are fired with enthusiasm.

A boundless, infinity-loving man like you is inevitably likely to be more vulnerable and easily hurt because of your acute perception of events. In such cases, you are hit full in the face, and you may sink into gloomy daydreamings and dark melancholy.

That said, this mysterious aura definitely gives you an indefinable charm in the eyes of your close friends who are often fascinated by your unique ability to feel and to see what ordinary people can never see!

Your Dominant Signs



In your natal chart, the three most important signs, delineated according to the above-mentioned criteria, are, in decreasing order of strength, Leo, Scorpio and Cancer. They are often prominent because your Ascendant and your Sun are posited there. However, it is not always the case: it may be because they are occupied by a cluster of planets, by a planet near an angle other than the Midheaven and the Ascendant, or because two or three planets are very active and form numerous aspects from these signs. Therefore, you partly take on the three signs' characteristics, which are somehow superimposed on your natal chart, and all the more so if any of the signs in question is highlighted.

With Leo as a dominant sign, you naturally shine brightly. Your dignity, your sense of honour, and your generosity can almost turn you into a solar mythological hero, a knight or a lord from the ancient times. People may blame you for your selfishness, your pride or your somewhat loud authority, but if you are self-confident, kind-hearted and strong-willed, it surely makes up for your little flaws, as long as they remain moderate...

With Scorpio as a dominant sign, you are a strong and astute person, complicated and passionate, sometimes destructive and intolerant, but strong-willed, tough and daring, sometimes bordering on aggressive. So many qualities and dangers combined in one person! Obviously, this often results in a natural selection of people around you: those who stand up to you or admire you and those who can't bear you anymore! But that is precisely what you want. You are what you are and you are not going to transform yourself just to please. You are too proud and you never dread confrontations, although your way of fighting is secret, like your nature that, mysteriously enough, you are so reluctant to reveal even to your close friends who will never understand you. That said... what a hellish charm you have!

Cancer is one of your dominant signs and endows you with imagination and exceptionally shrewd sensitivity. Although suspicious at first sight - and even at second...- as soon as you get familiar with people and let them win your confidence, your golden heart eventually shows up, despite your discretion and your desire for security that make you return into your shell at the slightest alert! Actually, you are a poet and if you are sometimes blamed for your nostalgia and your laziness, it is because your intense inner life is at full throttle...

Your Dominant Houses



Houses 9, 10 and 4 are the most tenanted ones in your natal chart. To compute their strength, planets and angles are weighed according to various astrological criteria such as swiftness, activity, angularity, rulership etc. From the analysis of the most tenanted Houses, the Astrologer deduces the fields of activity that are most relevant to you, be it because of what you are experiencing, or what you may experience in the future, or because of your deep inner motivations.

Your 9th house being one of your most tenanted house, or at least emphasized, travels and faraway places play a major role for you: travels may take place in a symbolic sense, namely mind speculations or conceptions about political matters, philosophy, religion or spirituality, or in the literal sense, such as real long distance travels by plane. It may also be that you spend a part of your life far from home, etc. You are driven by some kind of rebelliousness, which urges you to explore the Unknown; it may also be the call of the adventure. Besides, if the rest of your chart concurs, you may be considered as a real draught, often up hill and down dale, constantly on the lookout for exciting discoveries and new, enchanting horizons.

With a prominent 10th house, your destiny's achievement may be very notable: the 10th house represents your career, your public life, and your ambitions. A good deal of your energy may thus be used to

successfully implement what you have in mind. Instinctively, you are very keen to make your dreams come true. Sooner or later, you will deal with the public, and your personal achievement will go through trials and ordeals: other people and visible actions.

With an important 4th house in your chart, your private life, your intimacy, as well as your family and home, play a fundamental role. Your security and your family unit, the one you come from, but also the one you set up when you get married and start a family - or even as a bachelor living alone in your sweet home - are necessary for you to blossom. According to the Tradition, your father may play an important role in your life.

Your Style, Behaviour, and Peculiarities

What is commonly known as "sign" indicates the position of the Sun in the Zodiac. The Sun highlights all the characteristics of the sign he tenants. According to astrology traditional rules, these characteristics are all the more pure and exact when the Sun is strong in the sign, or when the sign is particularly highlighted within the chart. Here, we indicate the pure characteristics of the sign but you must bear in mind that they may only shed a light on a particular aspect of your personality. Indeed, the sole sign of the Sun, or of the Ascendant, can never describe an astrological chart because it depends on the degree of strength of the said sign in your chart.

Another important point must be underlined. Contrary to the Ascendant, which clearly describes your appearance, your vitality, your physical constitution, your spontaneous behaviour and the image you project, your Sun sign describes your inner self, which you may not completely be aware of, and which may emerge gradually as you mature: it is about your inner personality that you reveal only to the members of your entourage whom you trust. The Sun sign is likely to be the final form of your personality, once it has evolved in line with the energies of the other parts of your chart, the beginning of which is seen in the Ascendant, your external "bark".

The Ascendant is one of the major components of your natal chart. It is the zodiacal sign that rises in the East at the very moment of your birth. To calculate it, it is therefore necessary to know your exact time of birth.

It provides with a wealth of information on your personality. It is one of the key features that allows the analysis of several parts of you, such as your appearance, your character as it is initially perceived and your immediate behaviour. It describes the external aspect of your personality which you always display, but it also describes your physical constitution in the long-term, in other words, your health.

Please be aware that, in spite of the importance of the Ascendant, the accuracy of its description depends on how strongly highlighted it is in your natal chart. We use the entire set of astrological rules to assess the strength of the Ascendant. In most cases, the Ascendant is as revealing as your "sign", i.e., the sign where the Sun is posited at the time of birth.

You were born under the sign of Cancer and your Ascendant is in Scorpio

Before broaching the details of the meaning of your Sun and your Ascendant, as a preamble, we offer a brief generic interpretation of their combination in your chart:

This sign combination heralds a deeply enigmatic personality. You are not the kind of person who can be dominated, but you do not shout it from the rooftops. Cancer and Scorpio are the most secretive signs of the Zodiac. The crab moves sideways and nips without warning, whereas the scorpion remains lurking and hidden under its rock and watches... Please, do not be offended. Actually, these signs despise boastful and reckless attitudes. With your Scorpio Ascendant, the image you project in society is that of a diplomatic and perspicacious person who is often exasperated by people's weaknesses. You are passionate and imaginative, and you reveal to your friends and relatives your Cancer inner self, which is more welcoming and protective. However, it is hard to break free from your hold once people are caught in your nets. Is it possible that you actually have an oversensitive skin? A little bit, but what a character!

You were born with the Sun in Cancer

Psychologically speaking, your nature is dreamy, oriented towards nostalgia for things past. You are very instinctive and you protect yourself against the outside world. Your inner life is rich, with fertile and even unlimited imagination, a propensity to avoid unnecessary risks and to pursue security. You show your true face only to persons you can trust, when there is a kind of well being triggered by the nostalgia for the past.

As you are born under this sign, you are emotional, sentimental, restful, imaginative, sensitive, loyal, enduring, protective, vulnerable, generous, romantic, tender, poetic, maternal, dreamy, indolent, greedy and dedicated. You may also be fearful, unrealistic, evasive, passive, touchy, anxious, dependent, stubborn, lunatic, backward-looking, lazy, burdensome, impenetrable and a homebody.

Love in the masculine mode: for you, Sir, in love, you are tender, sensitive and quite loyal. You are influenced by a mother-figure and you unconsciously look for a partner who will offer as much attention and affection as you used to receive as a child. You are a homebody and a dreamer and you blossom in the family cocoon you create, dreaming of adventures and extraordinary trips... that you most often take in your head.

Tenderness is more important than sexuality, even though it is also an agent for security and for stability. You tremendously appreciate to be again the spoiled child that you used to be, as you savour tasty little dishes or as you receive the frequent praises you need in order to feel reassured.

You are sheltered from tragedies and life complications because at the very moment when a difficult situation emerges, you nip it in the bud either by ignoring it or by withdrawing into your shell quietly, until the storm subsides.

Your home is happy and rich, quiet and harmonious, throughout your life.

Your Ascendant is in Scorpio

Psychologically speaking, your nature is bilious, with aggressive impulses that lead you towards the transformation of your entire being and, continuously, of the situation surrounding you. You seem to be constantly struggling for your self-assertion. You cannot refrain from testing others with cutting remarks, not because you want to hurt them, but because you want to know them better through their reaction; for you, life and the feeling of aliveness are experienced through rebellion and tension. You may be manipulative and your aggressive attitude may equate with sly inquisition. You often remain silent, introverted and secretive, mulling over turbulent thoughts in the depths of your mind, leaving others puzzled by your somewhat peculiar behaviour.

As you are born under this sign, you are secretive, powerful, domineering, enduring, intuitive, assertive, charismatic, magnetic, wilful, daring, clear-sighted, passionate, creative, independent, vigorous, generous, loyal, hard-working, persevering, indomitable, possessive, shrewd, stubborn, ambitious, instinctive, tenacious, sexual, sexy, proud, intense and competitive. But you may also be aggressive, destructive, stubborn, anxious, tyrannical, perverse, sadistic, violent, self-centered, complex, critical, cruel, nasty, jealous, calculating, vulnerable and dissembling.

In love, Sir, you are very magnetic, with a discreet and indefinable charm that inevitably attracts the

persons you set your heart on. You detect their weaknesses so well that you can, at will, exert your powers and your manipulation tendencies over them. There are no negative consequences, as long as things go well, because you are very sensual, charming, possessive and swaggering and you make happy all the people who look for this domineering aspect in their partner. However, when things start to deteriorate, your almost pathological jealousy and your capacity to harm when you feel threatened are the causes of your partners' tears.

For you, passion means tension and tragedy. It is the price to be paid for sharing your sexuality loaded with unlimited fantasies, male ardour, loyalty and generosity. You are excessive, but very endearing, and your partner finds it very hard to leave you. It is preferable when things are fine between you.

The ruler of your chart is in Virgo

The ruler of the Ascendant, also referred to as the chart ruler, brings a few interesting nuances to the meanings provided by the Sun and the Ascendant. The sign in which the ruler of the Ascendant is posited fine-tunes the style of personality described by the Sun and the Ascendant. It may strengthen it if the sign is identical to either of them.

The ruler of the Ascendant, Tom Cruise, is Pluto. In the sign of Virgo, it turns you into a cautious and rational person, sometimes to the detriment of your feelings. You like to improve yourself, and you pay a great deal of attention to details. You respect the rules, and you appreciate well-done work. However, you may lack self-confidence or you may hesitate, perhaps because you hate to make mistakes, since you believe that truth is a major quality.

Aspects to your Ascendant

Several planets form an aspect with your Ascendant, Tom Cruise. Therefore, in their specific way, they modify your behaviour and your personality, which do not take on the pure characteristics of your Scorpio Ascendant only, but which are a blend of its characteristics with those of the said aspects.

★★★★★ Moon square Ascendant, orb -0° 31'

Sometimes, Tom Cruise, your sensitivity clashes with the image you want to project. As a result, you may feel vulnerable and suffer if you let yourself be disheartened. Try to put things into perspective and to confront your emotions without fearing your external image. This is how you can compensate for this minor dissonance between the Moon and your Ascendant.

★★★★★ Uranus sextile Ascendant, orb 4° 15'

Uranus is in soft aspect with your Ascendant, Tom Cruise. Although your behaviour is original, nonconformist, and free, it is not unpleasant. On the contrary, this facet of your personality is sometimes considered by other people as endearing and unpredictable, in the good sense of the word. One never gets bored in your company because you are often found where you are not expected, whether regarding your ideas, your lifestyle or the way you react. You possess the charm independent and free persons are endowed with!

★★★★★ Neptune conjunction Ascendant, orb 8° 37'

With Neptune in conjunction with your Ascendant, Tom Cruise, your intuition, your imagination, and your sensitivity may be remarkable. You feel other people even before understanding them. Your behaviour is ruled by emotions and instincts rather than by reason. Besides, this beneficial aspect is

often found in clairvoyants' charts, and you might be one of them, since your "radar" is so highly-developed! An aura of mystery endows your personality and your behaviour with undeniable charm...

★★★★★ Pluto sextile Ascendant, orb -5° 5'

Pluto, the planet of instinct and secret, is in soft aspect with your Ascendant, Tom Cruise. It endows you with exceptional lucidity, which enables you to behave in society in an appropriate, though slightly scathing and domineering way. You exploit your nose and your magnetism, and you do so very successfully!

★★★★★ Venus quintile Ascendant, orb 0° 45'

Thanks to Venus, Tom Cruise, your behaviour is in harmony with your affective life, and you need not make any special effort in order to express your feelings in a natural way and without arousing people's criticisms. This asset enhances your natural easiness and charm, which is definitely not unpleasant!

Your Sensitivity

You seek other people's attention and approval, Tom Cruise, you need to exteriorize your emotions, to interpret them, and even to dramatically enact them because it is essential for you to shine at the front of the stage. You always try to achieve more and better than anyone else and, whatever the situation may be, you strive to remain warm, generous, loyal, honest, straightforward and courageous. You are always available when your assistance or your advice is needed and you are glad and proud to help. However, you must be wary not to overdo, as you may be domineering! You are not indispensable and people might think that you are self-centered and authoritarian when you handle things with no regard for your entourage's views. It would be regrettable that you project such an image because it may only reveal a lack of self-confidence and you are only trying to reassure yourself...

Your emotions, Tom Cruise, prompt you to experiment what is faraway and foreign to your roots. You are indeed attracted by the unknown or by what is different from you, and it is mainly abroad that you realize that your emotions are exalted or that your popularity is enhanced. Besides, it is likely that your wife is a foreigner or at least, that you meet with her abroad.

Women may play an important role for your philosophical or moral training, or for your quest of knowledge and expanded horizons.

★★★★★ Moon opposite Saturn, orb -7° 17'

When this aspect is not well integrated, there is no feeling of integration and security. You feel that you are not understood or even, that you are rejected. It is difficult for you to find inner peace and tranquillity. You lack the quietness and the primordial confidence that would allow you to lay back and to be carried away and pampered by life. This configuration indicates questionings and doubts regarding the unconditional affection that each individual longs for. You do not trust the world. You tend to dismiss social models, as well as your close friends' attachment and tenderness, probably because you need to test them and to get the feeling of being loved that you naturally lack. It would be a mistake not to see that you desperately need affection. You are particularly vulnerable to relationship flaws and you strive to find the gestures of love that would allow you to let go and to be nurtured by life. In such a context, the sincerity you display, as you give or refuse your trust, is highly commendable.

Your Affectivity

In your chart, the Sun is in Cancer and Venus, in Leo. In spite of your apparent reserve and the selective nature of your affectivity (Sun in Cancer), you have a strong desire for conquest and seduction (Venus in Leo). This configuration is part of an often-repeated pattern: you are chosen, pampered and protected, sometimes, adulated. One must earn your esteem, your love and your confidence. Your affectivity is romantic, even dramatic. There is an obvious desire for the absolute. Let's begin with Venus in Leo: passion cannot be satisfied with half-measures. You love with all your heart, or not at all. The desire for the absolute is also true for the Sun in Cancer who sees the couple as sacred and indivisible. It is likely that you demand as much as you give. The danger may be that you expect so much from a love affair that you forget to step back. You may smother, you may destroy love because you embrace it too tightly. Your sensitivity is all on edge and your vulnerability allows your affective life to fully develop. If your partner does not disappoint you, you display a boundless generosity. But your mutual confidence (Cancer) and admiration (Leo) must not fade. More than anyone in this regard, you are touchy and

extremely uncompromising. One last point: jealousy often constitutes a very common but minor flaw.

You are so proud and generous, Tom Cruise, that the power of your love contains in itself your vulnerability. However, this is precisely what makes you charming and original. You are loyal and straightforward and you need to love as much as you need to be loved. Both feelings are tightly linked and there is a real danger that love is broken up by trivial misunderstandings, just because your touchiness is affected. You are demonstrative, brilliant, and even dramatic, with a legendary generosity. For you, everything is, or must be, excessive: gestures of love towards your partner, your presents, your comfort and the luxury, which marks your outings and your travels. You are physically a lion, at least, you have its sexual appetite; you are voluptuous and passionate. Flexibility is the only thing that is out of your reach, in the ways you show your love, as well as in your responses to annoying events.

If there are no tense aspects with other planets in your chart, this configuration suggests that you are prone, Tom Cruise, to create a link between your career and the sentimental area, even though it may come under various guises: you may be in favour with women in general and enjoy their support as you climb the social ladder and you achieve success more quickly making use of your charm and of your seductive ability. Sometimes, you may mingle love and career (or marriage), thus combining business with pleasure and indeed even... with your destiny. In other cases, you will be interested in Venusian occupations such as the arts, aesthetics, decoration, luxury trade or diplomacy. Whatever your activity, you will appreciate it tremendously and you will feel very much at ease. You will enjoy affective popularity and consequently, an aura of the luck of the devil that can propel you to the top or, at least, to where you dream of being. You are often a perfectionist and the careful zeal you dedicate to the attainment of your objectives greatly contributes to their achievement. Never do you forget them, and nothing pleases you more than to rub shoulders with important people in the higher spheres of diplomacy, politics or business. You love to act as the mediator or the go-between and to have your irresistible charm duly acknowledged and rewarded. According to the Tradition, Venus in the 10th house often indicates that men are strongly attached to their mother and this tie favourably influences their destiny. In some adverse circumstances, you may lack constancy or perseverance in love, or this area may, to some extent, contradict your career objectives, owing to your carelessness. You may be dominated by women, lack authority or you may find yourself doing a balancing act between your love life and your professional life, and being unable to make a choice, thus damaging both.

★★★★☆ Mercury sextile Venus, orb -0° 27'

This aspect sensitizes you to games of seduction. You like to multiply romantic undertakings, you invent new reasons to seduce or to be seduced. Although your romantic life is not a model of stability, it is full of discoveries, varied emotions, both sensual and cerebral. You know how to earn your entourage's liking through your acute sensitivity. You play around with feelings, with relationships and with love... Mercury and Venus commonly share the capacity to sensitise to human topics. Your receptivity towards others is high. Your broad-mindedness goes hand in hand with your heart's generosity. You pay particular attention to the way people look at you and the effect you make when you meet or exchange with someone. Actually, you expect a lot from others: acknowledgement of your qualities, as well as esteem and consideration. You may also be touchy beyond what you may give to think. In many instances, relationship games may turn out to be more serious than expected.

★★★★☆ Venus conjunction Uranus, orb 8° 29'

Your charm lies in the originality of your approach to love and in your uncompromising attitudes. Your motto? Freedom of love, whatever the price! Should your sentimental life become dull, you find a

solution: you are romantic and you reinvent your couple's life, you give a new and unexpected momentum to your emotions. You create the kind sharpness that contributes to your exceptional affective life. You do not fear love at first sight or blazing passions. On the affective plane, you know where you are heading for, whom you love ... or love not. There is an indisputable intransigence. The heart impulses are irrevocable and implacable. You dream of a sentimental life that fulfils your aspirations and you use all possible means to achieve your ideal. Even though you may have to make the necessary sacrifices.

★★★★★ Venus square Mars, orb -6° 45'

This Venus-Mars aspect indicates a sensitivity all on edge and an impulsive character. Emotions and heart impulses cause a marked tension. Life is an affective battlefield. Love is omnipresent but often fragile: impulsiveness reigns over the realm of feelings. The object of desire may become irresistible and implacable, or the sense of confrontations prevents affective tranquillity. However, the richness of your emotional responses is to be noted: you are more inclined than others to be guided by amorous fevers and you live intense passionate experiences. Your overwhelming impressionability must be contained. Romantic people seldom enjoy tranquillity!

★★★★★ Venus opposite Saturn, orb -9° 25'

This Venus-Saturn dissonance indicates a demanding, complex and often challenged affectivity. You are wondering about the meanings of love, pleasure and emotions. Your passions take an absolute character right away. No compromise, no sham must stain your sentimental life. In such a context, doubts abound. This aspect prompts you to review the roots of your affectivity, so as to find the assurance you lack and to soothe your dormant sentimental anxiety. Love is an eternal and endless quest. Because you are doubtful of the affection people have for you, you may never feel that you are really loved. Your affective behaviour reveals your uncertainties: tests and challenges follow one another until, eventually, you are certain to experience a love that meets your demands. It is obvious that on the sentimental area, you are not looking for the easy way out.

The Way You Take Action and Your Sexuality

Tom Cruise, the way you take action gains in power and in precision what it loses in rapidity and spontaneity. You are "slow", certainly. But when you get started, you put all your ingenuity and your persistence into it and you love to see a job well done. At the end of the day, owing to your ways, you are the winner. In your sex life, similarly, you are generous and instinctive and your slowness is not an obstacle. It may even bring fulfilment to you, but above all, to your partner! In love, as well as in your exchanges in general, you tend to keep your worries to yourself because you are extremely patient; you don't say anything, you stand all the hits and one day, you explode into outbursts of anger that are as violent as they are rare, thanks God.

You have a tendency to think relationships in terms of a duel, where one of the partners must hold sway over the other one, Tom Cruise. It may be disturbing, but you are satisfied because you know that your strong natural authority enables you to be in the domineering, and not in the dominated position!

Therefore, you excel in all activities having an important relationship component, or with some form of rivalry, authority, or fighting: a critical and uncompromising presenter, a prosecutor, a salesperson responsible for canvassing (although it may be double-edged), an attorney (but not to the defence, of

course) etc.

You appreciate people who have the energy to take decisions. For you, in the end, to take action means to confront others, for worse, but hopefully, very often, for better.

★★★★★ Mars square Uranus, orb 1° 44'

This Uranus-Mars dissonance indicates frequent commotions. Your actions may be foolhardy and thoughtless. You may not control your temper and you let impulsiveness take over logics. This brings about drastic, whimsical or untimely decisions. There is no monotony in your life: thunders and tyrannical behaviour are on the agenda! Your fighting spirit certainly allows you to cope with life hardships. Nevertheless, beware of damages. As one wants to act as a hero, one can make mistakes. Because forces are overestimated or because inflexibility forbids compromise solutions. Therefore, it is important to balance your decisions and to avoid solutions that are as final as inappropriate.

★★★★★ Sun semi-square Mars, orb 0° 09'

This aspect shows impulsivity, a fiery character and sensitivity all on edge. The excess of strength and energy may jeopardize your life balance and cause impulsive and unconsidered actions. Your ideals are not always in line with your deeds. You are certainly reactive and you stand for yourself heroically. But your untimely fits of anger may worsen existing tensions and bring about uncontrollable situations. Facts contradict your aspirations. When this configuration is properly reined in, it becomes an inexhaustible source of passion and energy.

Your Intellect and Your Communication Style

Tom Cruise, an enquiring intelligence, an instant understanding and a wide range of interests prompt you to go towards other people in all circumstances with a view to exchanging ideas and to show your talent for repartee. Ideas and actions must be quick and you are likely to be impatient, even critical and sarcastic with people who cannot match your frantic rhythm. You are very adaptable, you can do several different things at the same time and also think of a future action because you constantly need to be on the move. You may be criticized for your superficiality, for spreading yourself too thin and for your propensity to conceal the truth, but you always get out of tricky situations incredibly well because you are very astute, shrewd and charming.

You need to understand, to explore the unknown, to shed light on mysteries and to immerse yourself into the hidden fields of the unconscious or the afterlife, actually, into whatever escapes you, Tom Cruise. You are not content with what seems obvious because you are on Earth to evolve and not to stagnate or remain in a mindless state and a lack of understanding.

Interestingly enough, astrology connects the spheres of death, after-life and mysteries with the spheres of other people's possessions, investments, inheritances etc. This analogy probably comes from the fact that in those two fields, everything remains inaccessible right away. It might be the reason why such mysterious topics are so attractive to you.

Your investigative mind enables you to easily express your feelings and to explain the inner mechanisms of your whole being, almost as if your own self was a specimen to study, without modesty and with the only motivation to go as far and as deeply as possible.

★★★★★ Mercury square Jupiter, orb 7° 12'

You play with social norms and you scoff at them. Your morality is seldom questioned: you adopt the most rewarding behaviour, precisely the one that wins you your entourage's consideration. But you sometimes cheat. You are an opportunist and you act according to circumstances, particularly because your moral stand is only a superficial mask. You enjoy concealing your beliefs: life is a social game and you change its rules to suit your convenience. Your flexibility and your adaptation abilities are appreciated. However, it is important that you do not behave inconsistently. A stable and transparent course of conduct may help you avoid many pitfalls or delusions. Beware of words spoken thoughtlessly, of empty promises, and do stick to your indisputable cleverness.

Your Goals, Motivations, Career, and Destiny

Your Sun is posited in the 9th House

Tom Cruise, early in life, you apply to yourself the saying "No man is a prophet in his own country". Since you were a little boy, you had the impression that something in you was different and could not be understood by your close friends. Your natal environment prompts you to venture into unknown territories and remote lands, where you hope your real talents and qualities will be acknowledged.

You are more comfortable when you are away from home because of your rebellious mind, because you feel different or because of an awareness which stems from your good sense: what attracts you is far too original, compared to what your family or your roots may offer or may apprehend.

This peculiarity may take various forms, depending on your destiny and your personality: an inclination or a strong aspiration for distant trips, higher and abstract studies, higher knowledge, spirituality, philosophy, religion, moral or culture. You are also interested in occupations allowing you to meet your need to be elsewhere, physically or intellectually, such as for instance, the positions of ambassador, judge, exporter, philosopher, researcher, university teacher, reporter or in any job with the clergy.

It is clear that your social status can be improved in places located far from your home. Your ambitions are not hampered because you are favoured and predisposed for international contacts, or for contacts that are different from your natal environment. You have no problem learning foreign languages and you study this area with the certainty that you are forging valuable assets for the rest of your life.

Your self-assertion and your success go through experiences abroad or connected with foreigners.

As you mature, there is a spiritual, moral or intellectual brilliance linked to higher knowledge that radiates from you. It may also be due to the fact that you are dedicated to a noble cause for which you sincerely spare no effort.

When great planetary configurations of tension are formed in very few moments of your life, you may be affected by illnesses or fevers contracted abroad; or in your profession, where foreign matters are involved, you may have to bear the consequences of conflicts that tarnish your prestige or your honour. What constitutes your strength does not exclude cautiousness. Too much ease may lead to unforeseen situations: even though this applies obviously to all life areas, it is certain that, when exotic trips are involved, or figuratively, when you take intellectual, moral or spiritual stands, you must cautiously step

back and show restraint.

The ruler of your chart is in the 10th House

The ruler of the Ascendant, also referred to as the chart ruler as explained in a previous chapter, is also posited in one of the twelve Houses of the chart. Just like the Sun in his House, the ruler of the Ascendant provides certain abilities, or it makes you appreciate more keenly certain areas of life.

The ruler of your chart is in the 10th House, Tom Cruise. Your career - or your social status if you are not working - is highly important to you. You are driven by a certain ambition. You are endowed with the predisposition to lead, to shine, and to climb the hierarchical ladder. When you take action, you bear in mind the possible consequences for your social elevation.

Aspects influencing your ambitions

Regarding your destiny or your career, the following aspects of your natal chart allow to fine-tune what has just been said above:

★★★★★ Saturn opposite Midheaven, orb -0° 45'

Saturn is in opposition to your Midheaven, Tom Cruise. He is at the same time in conjunction with your Imum Coeli which symbolises your roots, your family, and later on, your home. This configuration indicates that roots and family are important to you, may be too much. They are both a protection and a hindrance which prevent you from fully spreading your wings, lest you lose the security you definitely crave. When the time comes, you must reconstruct by yourself a stable and reliable platform similar to that which protected your childhood, and you must never get disheartened in the process. If you are patient enough, time is your ally, even though in return, your professional destiny becomes somehow less important than your private cell, your home...

★★★★★ Sun trine Neptune, orb -0° 32'

This harmonious Sun-Neptune aspect indicates a highly developed intuition and clear-sightedness and sometimes, a sixth sense. Mental images or information drawn from the unconsciousness impress your mind. What was only a muddled feeling turns into certainty and deep conviction. You do not necessarily need to justify your attitudes: you take a decision because you feel that you have to do so, although you may not control the underlying logics. The danger is that you may follow fanciful or adventurous roads. Beliefs you cannot explain may prove wrong or over-optimistic. However, your intuition is seldom misleading. One last comment: there is often a keen curiosity for the « bizarre » and the paranormal with this planetary aspect.

★★★★★ Sun trine Jupiter, orb -1° 19'

This harmonious Sun-Jupiter aspect indicates an optimistic background that usually wins the entourage's adherence. It also suggests ambition and generosity and favours social integration and success. The desire to earn general consideration prompts you to display energy, joviality and benevolence. However, opportunism may be the other side of the coin. As you strive to win everyone's esteem, you may fall into disrepute. It is important that you remain clear-sighted so as to persistently pursue your long-term aims without believing that you should always « grab each and every opportunity ». However, this aspect remains an element of success because it allows you to adjust your objectives to the context, to whatever the situation offers or, on the contrary, to force your way through events and to achieve your ideals.

★★★★★ Neptune square Midheaven, orb 1° 34'

Owing to this dissonance between Neptune and your Midheaven, Tom Cruise, you may have difficulties in knowing what you want regarding your professional orientation. Your imagination and your flexibility cause contradictory feelings and sometimes result in indecisiveness. You are doubtful about the path your social or professional destiny should follow. There is definitely nothing serious to worry about. It is just that Neptune represents a heavy emotional burden which you must firmly deal with, so as not to delay your trek towards success!

★★★★★ Moon conjunction Midheaven, orb 6° 31'

The Moon in conjunction with the Midheaven receives good press, Tom Cruise. She indicates potential fame, or in any case, some degree of popularity. Your sensitivity is well perceived and, above all, it perfectly fits your professional destiny and your social ascent. Females may greatly influence your success. Your social status or your profession may be tightly linked to lunar values, such as frequent contacts with the crowd, children, women, daily matters, imagination, school, administration, leisure and sports for children, hotel and restaurant industry, bakery, poetry, the arts...

★★★★★ Sun sextile Pluto, orb -3° 19'

This harmonious Sun-Pluto aspect indicates an exemplary clear-sighted mind. Without destabilizing your appearances or your personality mask, Pluto makes you aware of your subjective and questionable character, as well as of your manner. You never take yourself completely seriously. You have a good grasp of human nature's complex games, without gullibility, without excessive simplification. Because you can perceive hidden elements underlying any situation better than anyone else, you are acknowledged as perspicacious. This aspect allows you to distance yourself from difficult circumstances and to remain impassive when you must overcome pitfalls.

★★★★★ Sun inconjunction Saturn, orb 1° 2'

The Sun-Saturn dissonance indicates frequent questionings. For the sake of lucidity, you are doubtful of everything that makes up your life environment, as well as of your entourage and of yourself. Past events are the cause of your distrust. Your motivations are not based on conventions or established norms. They may produce a feeling of loneliness or of revolt. However, you withstand difficult situations. You are pre-adapted to changes of direction and you are able to question the very basis of your life. Doubts are often overwhelming and hamper your steps. It is important that you accept facts with more simplicity and that you take life as it comes, without constantly questioning the validity of this or that option. It does not imply that you must lose the lucidity that is your characteristic. It only means that you have to build the self-confidence that you are lacking.

★★★★★ Venus conjunction Midheaven, orb 10° 11'

With Venus in conjunction with your Midheaven, Tom Cruise, it is all your natural warmth, or just your natural way to express your feelings, that is well received in society. This usually enables you to shine with happiness in your professional circles, or to accomplish your social destiny with reliable assets. It may be that a female, or the fair sex in general, favours your career progression and helps you because your personality arouses spontaneous sympathy. The professions you thrive in are of a Venusian nature, meaning that you deal with the world of beauty, the arts, pleasures, fashion, aestheticism...

★★★★★ Sun semi-square Uranus, orb 1° 34'

This Sun-Uranus dissonance indicates a dazzling will to be the centre of attention and to proclaim your specificity, by all means. This aspect belongs to the rebel and the revolutionary restive to all forms of

authority and of model. To balance this interpretation, the strong need for autonomy bordering on frenzied individualism must be highlighted. You allow nothing or no one to hinder your chosen line of conduct. Obviously, your attitudes are inflexible. You prefer to continue to the bitter end, even when you are wrong, rather than to be more open to people's ideas. Tyrannical attitudes often turn against the perpetrator... However, this configuration is a powerful agent for creativity, provided your hothead and extremist nature is kept under control.

★★★★★ Pluto semi-sextile Midheaven, orb -1° 13'

Pluto is in soft aspect with your Midheaven, Tom Cruise. Your natural perspicacity and your propensity to move deeper into the understanding of all the things surrounding you may favour your career. Besides, in some circumstances, secret protections or relationships at work in the dark may very well help you climb up the stairs to success. At the same time, your intuition and your capacity to overcome pitfalls are your constant assets.

★★★★★ Mars quintile Midheaven, orb 1° 03'

Your energy serves your professional goals and your social ascent in general, Tom Cruise. This beneficial aspect of Mars to your Midheaven endows you with strong dynamism, and it rewards your sustained and efficient efforts. You enjoy taking action, and your results are gratifying most of the time.

Your Assets and Your Part of Joviality

Tom Cruise, your sensitivity, your emotions, and your artistic capacities, particularly regarding music and rhythm, are strongly increased with this position of the planet of Greater Fortune in this borderless sign. It endows you with an artistic and endearing side as well as with flexible and mobile ways to consider your relationships and your environment. Your dreamy state of mind and your sensitivity to other people's sufferings may get involved with compassion in great humanitarian causes.

For you, Tom Cruise, nature's present includes a lot of great satisfaction in the area of leisure, entertainment, creation and love. Anything with a hint of pleasure is favoured. A marvellous world exempt from constraint and obligation illuminates your life. According to the Tradition, your luck also applies to your communication with children and your descendants are harmonious and successful.

The planet Jupiter symbolizes expansion, broadness and generosity. Jupiter is associated with the functions of synthesis, enthusiasm and optimism. In your natal chart, his house position is more important than his sign position because, like Saturn, Uranus, Neptune and Pluto, he is a slow planet. Many people born in the same period have Jupiter in the same sign. This is the reason why the sign occupied here is less meaningful than when it is occupied by the so-called fast planets, i.e. the Sun, the Moon, Mercury, Venus and Mars. Therefore, some caution is to be exercised as you read what follows.

Jupiter in Pisces increases your natural generosity and your dedication capacity. Your empathy is strong and you are inclined to offer your strength and your enthusiasm to the most deprived people and to give unlimited assistance to others. Your imagination is powerful and your feelings may flare up easily: with your sensitivity on the alert and your unbridled affectivity, you belong to the category of people who intuitively detect other people's sufferings and most valuable qualities of the heart, as if you were a human radar.

Your Serious Side

Solemnity and concentration are at the service of your projects and your altruistic ideals. To the detriment of your own individuality, you become demanding with time, and you learn to better define the human values that are really important to you. Struggling in order to better assert your individual qualities can be highly profitable.

Tom Cruise, you worry when you are at home, in private. You may feel, wrongly usually, that your family does not love you, that they do not understand you, that you are lonely, and that your father is too strict.

You are often attached to the past and to painful souvenirs. Your challenge is to understand that the present can become light and pleasant and that the burden of your sufferings comes from your own doubts and not from your family environment. If you succeed in doing so, you will win on all counts since, at the end of the day, you become responsible, stable and... happy at home!

The planet Saturn symbolizes contraction, effort, time, limitation and concentration. Saturn eliminates anything that is not authentic, sooner or later. It is impossible to cheat him as he gives an irresistible desire to form a coherent whole with oneself, in responsible and wise ways. He is the great purifier. He represents our limitations but also our truth. In your natal chart, the house position where Saturn is posited is more important than his sign position because, like Jupiter, Uranus, Neptune and Pluto, he is a slow planet. Many people born in the same period have Saturn in the same sign. This is the reason why the sign occupied here is less meaningful than when it is occupied by the so-called fast planets, i.e. the Sun, the Moon, Mercury, Venus and Mars. Therefore, some caution is to be exercised as you read what follows.

Saturn in Aquarius endows you with the capacity to deliver in collective areas, humanitarian causes or avant-gardist projects. Your sensitivity is withdrawn but it is offset by your ability to handle human relationships in a daring and efficient way, which allows you to achieve your goals for the sake of a cause.

A Few Special Points

Your Uniqueness and Your Utopias

This is one of the most potent configurations. Unexpected disruptions of considerable intensity often occur on the factual plane. Embracing changes is the basis of the success of your destiny, which is very likely to include extreme variations, sometimes towards the most glorious heights, sometimes towards ordeals that you face with courage and determination, despite your unpreparedness.

Originality is certainly the context of your professional life or your destiny, in one way or another. Whether it is expressed through your very special area of expertise (high technology, space, aviation, astrology, television, etc.) or through the totally hectic nature of your progression (sudden changes of orientation), you are not able to plan what is coming next. Unforeseen events undertake to make a clean sweep of your certainties. This may offer many advantages if your state of mind is ready to approach life as a journey where your only freedom is to adjust in the best possible way to new emerging situations.

Most of the time, you are very independent, very keen to show your professional talents in a unique and modern way. You are a kind of pioneer or of rebel in your area, which allows you to better assert your

genius.

Your Inspiration and Your Illusions

You are particularly sensitive, intuitive, and you have a very fertile imagination. You may seem mysterious to others, actually to yourself, too, and you may be unaware of the consequences your actions may trigger because you are wrapped up in nebulous impressions and cut off from the material world.

Your behaviour may be surprising because your sixth sense is so developed that you may adopt a completely different attitude and amaze your entourage by your very sharp perception of things that is often beyond ordinary mortals' understanding.

You are interested in new experiences that may not be respectful of proprieties or moral standards, just for fun and due to a certain degree of carelessness... You feel that you are beyond the law and rules, and your emotionalism may take you too far.

Your Passion and Your Authority

Your career, and more generally, your entire destiny, is challenged in many instances. You are individualistic, and you do not hesitate to forcefully provoke events, but often, external facts, totally beyond your will, are the causes of major disruptions in your life.

Your strong ambition prompts you to use your instinct of domination over people and over things... Towards that aim, you cannot help it, you have to trigger crises that invariably bring about transformations around you and within you. And this is exactly what you unconsciously wish for.

In your professional world, you are respected and even feared. It is up to you to be careful not to overstep boundaries, if you do not want to bear the consequences of this transforming agent that is inherent to your destiny.

Symbolically, the Tradition indicates that your mother is very probably domineering and authoritarian – at least, in your opinion - particularly during your childhood.

Your Isolated Planets

In general, the ten planets of the chart are connected to other planets by major or minor astrological aspects. It is owing to those ties that the planets' energies can manifest in the chart owner's personality and play out within safeguards according to a specific tonality.

It seldom happens that in a natal chart, a planet is totally disconnected from the nine other planets.

Astrologers have observed that when such a case occurs, the person feels the energy of the unaspected planet in quite a singular way, very jerky and powerful at the same time. Thus, for instance, the famed astrologer Jean-Baptiste Morin de Villefranche wrote that "an unaspected planet heralds that something strange or extraordinary will take place regarding the meanings of the house in which the said planet is

posited" (source : l'astrologie selon Morin).

Rules for detecting an unaspected planet: among all the testimonies that we have reviewed to this day, based on our experience, we tend to agree with American astrologer Janis Huntley who accepts seven aspects, which involve the zodiacal twelve sections of 30 degrees. The aspects to be considered are the conjunction (0 degree, cooperation or tension), the semi-sextile (30 degrees), the sextile and the trine (60 and 120 degrees respectively, aspects of cooperation), the square and the opposition (90 and 180 degrees respectively, tensed aspects), and the quincunx (150 degrees, slightly tensed). In this detection, the chart's angles are not taken into account.

In any case, it is important to remember that an isolated planet clearly expresses its influence when it is a personal planet. Thus, when the Sun, the Moon, Mercury, Venus, or Mars is isolated, it is certain that the effects described by Jean-Baptiste Morin de Villefranche will become manifest. As for Jupiter, Saturn, Uranus, Neptune, and Pluto, one must be cautious because the volume of cases documented is not yet large enough.

Your chart has no isolated planet, and this particular case does not apply to you.

Annex 1: Your Minor Dominants

The five following dominants are less significant than those described at the beginning of your report. They may not be strongly felt. In some cases, they add several minor details to the analysis of your character, but they are rather for curiosity purposes. It is not necessary to take them into account when you first read your portrait.

Your Planetary Repartitions: Northern, Southern, Eastern and Western Hemispheres

The axis linking the 1st house's cuspid (the Ascendant) to the 7th house's cuspid - the Descendant - divides the zodiac into two bowls, a superior bowl, in the South, and an inferior bowl in the North. Quoting an expression by the famous American astrologer Rudhyar, the Southern part and the Northern part correspond to two functions: "being" and "doing". Other concepts are also associated with this North and South distribution, such as introversion - Northern hemisphere - and extraversion - Southern hemisphere - being or appearances, inner life or external life, reflection or action, dreaming one's life or living one's dreams, the abstract or the concrete, backstage or limelight.

This is not about determination but about personal inclination: thus, some people will be thrown into public life despite a prominent Northern hemisphere. If this happens, however, it will not be due to their will, their taste or their deep nature. Conversely, a prominent Southern hemisphere will not bring about a famous destiny to its owner, even if he tends to turn the spotlight on himself, or if he looks for a more active life. It is a matter of deep nature and natural inclination. Of course, none of the typologies is "superior" to another.

In your birth chart, Tom Cruise, the ten main planets are distributed as follows:

Your Northern and Southern Hemispheres



Tom Cruise, the predominance of planets in the Southern hemisphere prompts you to take action, to draw attention on yourself, and to make your actions and what you have in mind visible to everyone. Sometimes, without giving a single thought to, and to the detriment of, a richer inner life and a deeper and wiser reflection. Action and communication are inevitable in your opinion, and you tend to think that the only thing that matters is what is seen! This is not always true, and it is up to you to progress through the development of inner qualities such as meditation, solitude and imagination so as to become stronger.

The birth chart is divided into two other parts, Eastern and Western, by the axis linking the Midheaven to the Imum Coeli.

The Eastern part, on the Ascendant side, shows the person's ego, will, magnetism, and vitality, whereas the Western part, on the Descendant side, symbolizes other people, communication, relationships and their influence, as well as flexibility and adaptability.

Tom Cruise, here is the planetary repartition in your Eastern and your Western hemispheres:

Your Eastern and Western Hemisphere:



The predominance of planets in the Western hemisphere of your chart means that you are quite flexible, capable of empathy, convivial and communicative. An excellent factor for many professional activities or for your social or sentimental life for example.

A definite asset... provided that you are not at the centre of the decisions you must take in your life: you may be tempted to listen to the last person who spoke, and your flexibility won't always get you out of the tight spot. You are therefore advised to learn to decide alone and to cope with the consequences of your actions with courage and without regrets. This attitude will allow you to combine flexibility and action, adaptability and absence of hesitation.

Your Yin and Yang Polarity

The twelve signs are divided into two polarities, called active or passive, or sometimes masculine and feminine, positive and negative, Yang and Yin. This classification corresponds to two quite distinct tonalities, the first one bringing extraversion, action, self-confidence and dynamism, the second one, introversion, reactivity, reflection and caution. None is superior to the other, each group has its own assets and shortcomings. Odd signs - Aries, Gemini, Leo, Libra, Sagittarius and Aquarius - belong to the first group, whereas even signs - Taurus, Cancer, Virgo, Scorpio, Capricorn and Pisces - belong to the second group.

Your Yin and Yang Polarity



According to the disposition and qualities of your planets and angles, you are rather influenced by Yin energy, the passive polarity, Tom Cruise: you are quite introverted, imaginative and sometimes discreet, but you are a deep and wise person who is not content with just noisy and flashy things. At times, you doubt but you think that those who don't are a bit... thoughtless. Allow yourself to take more laid-back attitudes and put your reserve aside, because good equilibrium is always healthier.

Your Houses' Accentuations

Houses are split up into three groups: angular, succedent and cadent.

The first ones are the most important ones, the most "noticeable" and energetic houses. They are the 1st, 4th, 7th and 10th houses. Their cusps correspond to four famous angles: Ascendant for the 1st house, Imum Coeli for the 4th house, Descendant, opposite the Ascendant, for the 7th house and Midheaven for the 10th house, opposite the Imum Coeli.

Planets are evaluated according to a whole set of criteria that includes comprehensive Western astrology rules. At their turn, planets emphasize specific types of houses, signs, repartitions etc., as previously explained.

Your Houses' Accentuations



Your angular houses, namely, the 1st, 4th, 7th and 10th houses, are very emphasized in your chart, Tom Cruise: according to the Tradition, they are the strongest and most dynamic houses. Should the rest of your chart concur, angular houses suggest that you are an enterprising, energetic and assertive man. Indeed, angular houses are said to generate impulsions and to give a powerful and domineering personality.

Unusual fates are often linked to a predominance of angular houses, but this is only a partial indication...

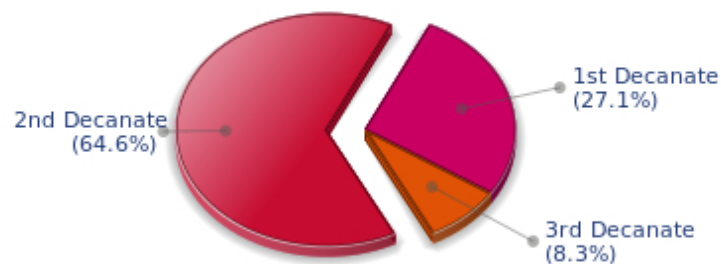
Your Esoteric Decanates

Each sign contains 30 degrees and can be divided into three equal parts: the decanates. The Tradition indicates that specific meanings can be associated to each of the three decanates. Their sphere of activity is usually limited to the Sun sign, however, it is even more interesting to observe the distribution of all the planets in the chart to get an idea of the respective importance of the three decanates, which can complement the description of the personality.

These meanings must be considered with the greatest caution. Indeed, they are minor characteristics that can only underline other outstanding traits of character.

Traditionally, the first decanate highlights the characteristics of the sign where a planet is located. The two other decanates correspond to sub-dominant planets, depending on the nature of each sign. This system leads to a multiplication of meanings and it is impossible to have a clear understanding: here, we prefer to give only the meaning of one decanate in comparison with the other two, within the birth chart as a whole. Again, the greatest caution is needed with regard to this minor indication as it is not always reliable: it is not essential that you read these texts in the beginning. You can get back to them later on, once you have read more important interpretations

Your Esoteric Decanates



The second decanate, which means the part between 10° and 20° of any zodiacal sign, prevails in your natal chart, Tom Cruise: these 10 zodiacal degrees emphasize logical thought and mental values. Therefore, you may be drawn to some kind of scientific activities, research, writing or any sort of expression where you have to... think a lot.

Annex 2: Karmic Study

The karmic theme is a good complement to the psychological portrait, or natal chart. This analysis is based on the positions of the Lunar Nodes, the Black Moon and the Part of Fortune: they are also called fictitious points and describe the spiritual purpose of your destiny. Because there is in all of us an experience and a quest, our life is an evolutionary journey... provided that we head towards the right direction, of course! Indian astrologers highly prize the Nodes axis (North Node and South Node). It is the Ariadne's thread that we are invited to follow. The Black Moon indicates the sector where we are most likely to transform or to transcend, whereas the Part of Fortune points out the area where we can easily express our specificity.

The Lunar Nodes: a spiritual path

Lunar Nodes have their roots in the Indian tradition and they are based on a simple concept: each of us have a mission of their own, here on earth, a destiny, a course. According to the Indian philosophy, life is a school: the nodal axis describes our past experiences (South Node, our karma, our spiritual inheritance or our previous lives), and our aims on earth (North Node, our Dharma, the purpose of our current incarnation). This is the reason why the study of the lunar nodes is called "Karmic astrology". Here, we shall not step into hypothetical past lives. Wherever our current trends may come from, all that really matters is that we become aware of the purpose of our life, its finality and our dharma. We are likely to understand our life purpose around the age of 37, when the Lunar Nodes return to their natal position.

You make friends easily and you earn your entourage's confidence and esteem. Very early, you develop an acute sense of fraternal relations, generously receiving and giving. This spirit of mutual aid may lead to a happy-go-lucky attitude that may border on carelessness... As you rely too heavily on friendship, there may be a danger to undergo a few setbacks: idealism and spontaneous dedication may meet with ungrateful reactions or the indifference of the very persons whom you try to help. Your destiny is probably marked with a quest of individual achievement. It is of utmost importance that you create, that you beget a fruit, a work or a child. Little by little, you become independent, without selfishness, but with the strength of those who know that they can only rely on themselves. Do not hesitate to live your dreams to the end and to engender, over and over again. Creation, whatever its form, is the path to your fulfilment. You slowly discover the pleasure to design as you please, without outside interference. It is important that you find an area for your personal expression and, as the poet says, "before the eyes, constantly, night and day, either a great labour or a great love".

Your life is marked with the major challenge of developing your social image, of asserting your personality... and of leaving your shell. Your childhood and your family roots are very present. You have an inclination for quietness, protections and intimacy. You enjoy at will the moments when you feel "at home", in known territory and familiar situations. But you must learn to thrive in society, to give of your best, to socially shine, particularly when you feel that external pressure and opinions are upsetting. Do not fall in the trap of your dreams and souvenirs! Life implies responsibilities and the will to control, otherwise you cannot feel your true self. You may be too dependent and you must learn to slowly become autonomous, free to take decisions and to take action. Your sense of duty allows you to climb all the steps of a perilous, yet thrilling, social ladder. As years go by, you claim more autonomy, more power and more freedom of action.

Lilith or the Dark Moon

The Black Moon is the spark of refusal and distance that is dormant in all of us. Depending on the sign where she is found in your chart, she highlights the desire to transform and to sublimate a part of your life. The Black Moon is unfathomable and mysterious. She gives a different dimension to the sector she touches. Her manifestations are subtle; nonetheless, she is powerful, implacable, demanding to the extreme... The Black Moon is also called Lilith. She is the inner flame of your heroism and insubordination.

You decidedly assert yourself as a person made of desires, love and the absolute. If this configuration is not well controlled enough, your thirst for timeless relationships may hamper simple, natural and obvious affairs. You may reject persons whose attitudes do not perfectly live up to your expectations. However, as you keep on looking for your muse, it is very likely that you will find the person to whom fate has relentlessly tied you.

It is in the humanitarian field that rebellion is best expressed. Your dream is to become the spearhead for a different project of society, the Quixote of altruism. Each individual must be independent, really free to think and to act. Any hindrance to free will makes you indignant! The danger is that you may not tolerate any external constraint. This is probably the price to be paid for a freedom of thought that constitutes the core of your progression.

The Part of Fortune in House

The Part of Fortune is a very ancient fictitious point that depends on the lunar phase at the time of birth. The astrological house tenanted is particularly strengthened. In your chart, the Part of Fortune is in the 1st house: you aspire to be in full control of yourself. Your wealth is within... early in life you develop the taste for individual initiatives and you find your full balance as you give new impulsions to people and things. You are the initiator, the eternal starter. Like all the persons born at the new moon, you have a very personal way of handling life.

Retrograde Planets

The karmic tradition insists on the issues related to the so-called retrograde planets. They are considered to be the inheritance of a past that was not well experienced, a sort of unfinished business. The interpretations of the retrogradation may seem negative or excessive to you. However, you may relate to a scenario that you have often and repeatedly experienced... as if you underwent several setbacks that all have the same cause. Until the day you become aware of it and you can free yourself from it! Through the slow integration of these planetary energies, you will be able to overcome your difficulties and to pay your karmic debt. Actually, each retrograde planet highlights an opportunity for evolution. Nothing can be achieved without the will to grow spiritually and to defeat your own demons.

With Jupiter retrograding on the day of your birth, the lesson is about grasping the opportunities that are offered to all of us but that some people take advantage of, while others don't. Persons who quickly adjust to circumstances are more likely to achieve their ambitions than those who need to be encouraged to take action. During your childhood, you may not have efficiently responded to life's concrete enticements, leaving other "luckier" people to achieve what you were dreaming of. You preferred to enjoy yourself, here and now, rather than to look for new paths of development or exploration. It is possible that you were not optimistic enough. Enterprising minds were alien to you... Later, you find out that, indeed, you give little importance to the credit of the frenzied expansion praised by the modern

world. Your path is not oriented towards personal prestige. With subtlety, you integrate non-material values and you accept well the fact that you missed past opportunities.

The karma associated with Saturn may border on self-censorship: during your childhood, particularly, you were doubtful of your abilities and your talents. You had a propensity to put yourself in a no-win situation and to under-estimate yourself. Obstacles abound: taboos and prohibitions of all kind slow down your evolution. Little by little, you learn to re-evaluate your possibilities and to gain more self-confidence. Your personal rigour then turns out to be constructive: you are not destabilized by life ordeals and you practice a self-discipline that favours steady evolution. Although your path may be steep, it is nonetheless safe.

Neptune retrograding concerns spirituality. You may have expressed early in life a few reluctances about the subtle world of faith. You may have ignored destiny's signs and winks and you preferred to stick to your certainties, to a rigorous and objective control of your life. You dread your own aspirations and you readily trust others': this causes a lack of autonomy and the feeling that you may not receive as much as you give. However, several delusions teach you that you must relativize your calculating and methodical attitude and open up to the irrationality of love in order to find an inner and more spiritual progression. Embracing the invisible is a process that unfolds as years and experiences go by. Your own generosity increases as you become aware of your entourage's generosity.

N.B: modern astrology attaches less and less importance to the principles of retrograding planets.

Conclusion

A few remarks are needed here in order to allow you to fully take advantage of your astrological portrait: firstly, do not forget that a birth chart is also a photograph of the sky at birth and a structure that not only contains the personality's characteristics, but also its potential evolution.

We all know that, in real life, people begin to know themselves when they are in their forties, or even later. Likewise, several traits of character in a portrait may seem surprising: in most cases, it means that such features are not yet developed.

Some personalities reveal themselves late in life, whereas others are more precocious. It must be remembered that psychological structures are in a state of continuous evolution because they are influenced by unfolding events and gradual maturity. We can never underline strongly enough the "mobile" nature of the personality, throughout a lifetime.

On the other hand, it is difficult to discriminate what is "already present" at this moment in your life when you are reading your chart's interpretation, from what will appear later in the logic of your evolution: you must sort out all the pieces of information provided and, in most cases, you will see that your astrological portrait is helpful for your endeavours to know yourself better.

Finally, several readings of an astrological portrait are usually necessary in order to absorb all its different meanings and to evaluate the relevance of each character trait.

In any case, better self-knowledge obviously contributes to faster personal blossoming, and it is undoubtedly one of astrology's major roles: contributing to know oneself better, in order to improve more rapidly, to deal with one's weaknesses and to avoid its drawbacks, and to take advantage of one's assets as efficiently as possible.
