

Tom Brady's Astrological Portrait



Introduction	2
Your Planets, Houses, Aspects, and Natal Chart	4
Preamble	7
Your Planetary Repartitions	8
Your Dominant Modes and Elements	9
Your Dominants: Planets, Signs and Houses	10
Your Style, Behaviour, and Peculiarities	14
Your Sensitivity	18
Your Affectivity	20
The Way You Take Action and Your Sexuality	21
Your Intellect and Your Communication Style	22
Your Goals, Motivations, Career, and Destiny	24
Your Assets and Your Part of Joviality	26
Your Serious Side	27
A Few Special Points	27
Your Isolated Planets	29
Annex 1: Your Minor Dominants	30
Annex 2: Karmic Study	34
Conclusion	37



Tom Brady's Astrological Portrait

Introduction

To fully benefit from this portrait, we suggest that you read its introduction and its preamble carefully, and then that to take the time to soak up the interpretations of each chapter. Given the large number of texts, which mirrors the human being's complexity, you may need to go through the contents several times, so as to get a good grasp of their meaning and to know yourself better. This will reward your patience.

The purpose of this report is to describe your psychological portrait and to highlight the most fundamental features on the personal area. The report begins with the analysis of your planetary dominants and outlines your personality's general traits before going into further detail. Minor dominants are analysed at the end of Annex 1, for purposes of clarity. Your report then delineates the various facets of your personality:

In general, even when relationships are not involved, we express ourselves and we feel according to our character and our personal motivations: this is indicated by the Ascendant and the Sun sign which both give details on the way we function. They shed a tremendously important light which allows to figure out your personality. Here, we describe your Sun sign (your inner self), your Ascendant (your behaviour as seen by others), and the ruler of the Ascendant (interesting additional pieces of information about the style of your personality). These descriptions alone cover nearly a third or a half of your psychological signature, depending on your natal chart characteristics.

Then, we address your sensitivity, or in other words, the way you receive things and how you express your emotions ; it works as a constant filter for all your exchanges, even when it becomes a more secondary element in your amorous relationship, because at that moment, affectivity prevails. Sensitivity is the way you perceive things, it is your radar, your daily mood, and at the same time, it indicates how you react to your entourage, on a daily basis. It is what others immediately see of you. In the second paragraph, we explain in which areas of life your sensitivity and your emotions are strongest, therefore, where you are most vulnerable.

After this, it is your affectivity, the way you love and how you charm, that comes into play as soon as you fall in love: the first part indicates its basic structure or its main form. The second part describes the areas where it is best expressed and how you display it, according to your personality.

A third fundamental area deals with your mode of action and your sexuality: how you behave, how you manage to obtain what you want, what kind of desires you have. There are twelve possibilities, very

different from one another. The study discloses the specific one that applies to you. In the second paragraph, we explain in which life areas you may most efficiently take advantage of your capacity for action and for conquest.

Your ways of communicating and of thinking are obviously among the major elements that must be integrated into the delineation and the description of your personality. Indeed, they influence your general behaviour and may modify or enhance the image your project (for instance, extraversion may “compensate” a weak affectivity, but a huge number of cases are possible). An additional chapter indicates the favourite areas where you enjoy communicating, thinking and meeting with people.

Besides, we analyze an even more personal aspect that is important to define and understand what may occur within your couple: each of us have a centre of interest, a privileged manner to be fulfilled or to achieve our destiny; this main motivation is indicated by the positions of your Sun and your chart ruler in the astrological houses and we provide you with its detailed description.

A natal chart contains the potential for specific fulfilment and a whole range of assets, protections and qualities. How does the lucky factor manifest in your personality? In which area can you best exploit your qualities? The answers are precisely revealed to you in this chapter.

On the other hand, we all feel in us a part of vulnerability, doubts and fears. How does this part of solemnity or serious side play out? How is it possible to handle it in order to evolve and to get rid of useless elements? All this information is provided to you in these two paragraphs.

Then, you can discover three additional traits of your personality that must be considered as secondary ones. They deal with your predispositions, which means that they need to be triggered by external events because they are not influenced by your will; let's call it a part of fate. Please, bear in mind that your destiny can unfold only in accordance with what you are: therefore, even if they belong to your more unconscious self, these characteristics are parts of you, definitely.

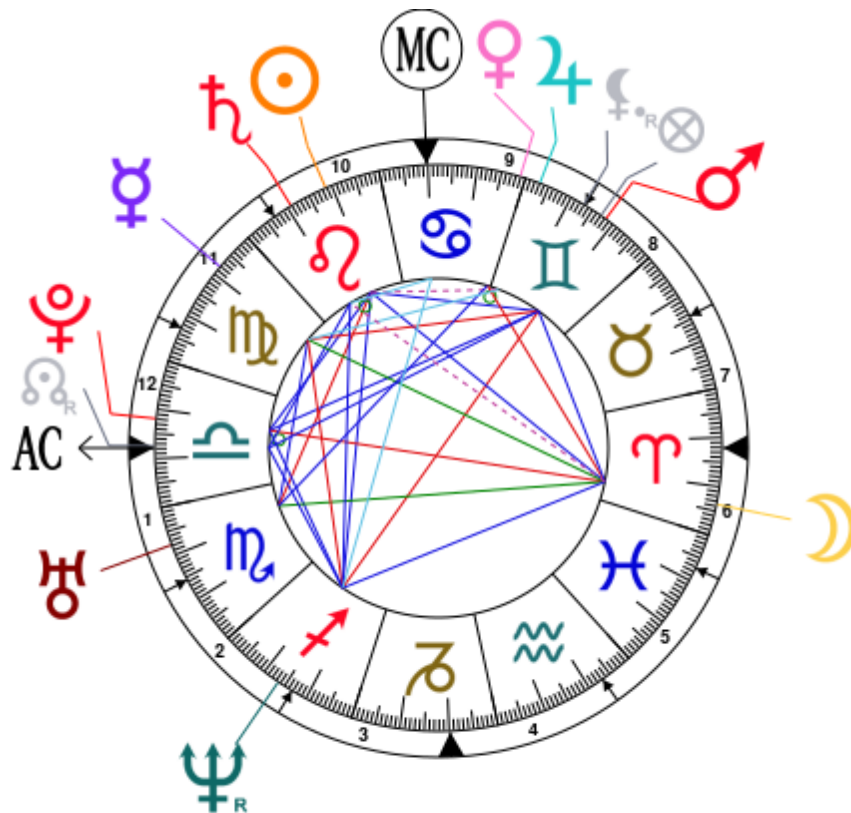
The karmic chart complements the psychological portrait or natal chart. It is based on the positions of the Lunar Nodes, the Black Moon, and the Part of Fortune. These elements of the chart, sometimes referred to as fictitious points, provide information about the spiritual meaning of your destiny. Owing to the fact that we all have in us acquired knowledge and the urge to go on a quest, our life is an evolutionary journey... However, these texts must be read with great caution: this is the reason why you will find this analysis in the Annex 2 of your report.

Your Planets, Houses, Aspects, and Natal Chart

Tom Brady, born August 3, 1977, at 11:48 AM, San Mateo (San Mateo), California [122.19W ; 37.33N ; 7W00]

Natal Planets				In House	Natal Houses (Placidus)	
☉ Sun	11°18'	♌ Leo	House 10	House 1	17°52'	♎ Libra
☾ Moon	6°23'	♈ Aries	House 6	House 2	15°36'	♏ Scorpio
☿ Mercury	8°08'	♍ Virgo	House 11	House 3	16°46'	♐ Sagittarius
♀ Venus	1°07'	♋ Cancer	House 9	House 4	20°15'	♑ Capricorn
♂ Mars	11°45'	♊ Gemini	House 8	House 5	23°12'	♒ Aquarius
♃ Jupiter	26°56'	♊ Gemini	House 9	House 6	22°47'	♓ Pisces
♄ Saturn	19°11'	♌ Leo	House 10	House 7	17°52'	♈ Aries
♅ Uranus	7°50'	♏ Scorpio	House 1	House 8	15°36'	♉ Taurus
♆ Neptune	13°30' R	♐ Sagittarius	House 2	House 9	16°46'	♊ Gemini
♇ Pluto	11°55'	♎ Libra	House 12	House 10	20°15'	♋ Cancer
♁ Node	17°27' R	♎ Libra	House 1	House 11	23°12'	♌ Leo
♁ Lilith	17°03' R	♊ Gemini	House 9	House 12	22°47'	♍ Virgo
AS AS	17°52'	♎ Libra				
MC MC	20°15'	♋ Cancer				

In keeping with the common practice, we consider that a planet posited within 1 degree of the next house belongs to that house. We allow an orb of 2 degrees for the ASC and the MC.



List of Your Active Planetary Aspects

Please find below the list of all the active inter-aspects which are interpreted in this report, in addition to your planets in sign, in house, and all your planetary dominants. Since the aspects between slow-moving planets are of a collective nature, they are not displayed, in compliance with our interpretation rules.

- ★★★★★ Sun trine Moon, orb 4° 54'
- ★★★★★ Sun sextile Mars, orb -0° 26'
- ★☆☆☆☆ Sun semi-square Jupiter, orb -0° 37'
- ★★★★★ Sun conjunction Saturn, orb 7° 53'
- ★★★☆☆ Sun square Uranus, orb -3° 27'
- ★★★★★ Sun trine Neptune, orb 2° 11'
- ★★★★★ Sun sextile Pluto, orb 0° 36'
- ★☆☆☆☆ Moon inconjunction Mercury, orb 1° 45'
- ★★★☆☆ Moon square Venus, orb -5° 16'
- ★★★★★ Moon sextile Mars, orb 5° 21'
- ★☆☆☆☆ Moon sesqui-quadrant Saturn, orb -2° 12'
- ★☆☆☆☆ Moon inconjunction Uranus, orb -1° 26'
- ★★★★★ Moon trine Neptune, orb -7° 06'
- ★★★☆☆ Moon opposite Pluto, orb -5° 31'
- ★★★☆☆ Mercury square Mars, orb -3° 36'
- ★★★★★ Mercury quintile Jupiter, orb -0° 47'
- ★★★★★ Mercury sextile Uranus, orb -0° 18'
- ★★★☆☆ Mercury square Neptune, orb 5° 21'
- ★★★★★ Venus conjunction Jupiter, orb 4° 11'
- ★★★★★ Venus trine Uranus, orb 6° 43'
- ★★★★★ Mars opposite Neptune, orb -1° 45'
- ★★★★★ Mars trine Pluto, orb 0° 09'
- ★★★★★ Mars trine Ascendant, orb 6° 07'
- ★★★★★ Saturn sextile Ascendant, orb -1° 18'
- ★★★★★ Saturn semi-sextile Midheaven, orb -1° 04'
- ★★★★★ Neptune sextile Ascendant, orb -4° 22'
- ★★★★★ Neptune bi-quintile Midheaven, orb -0° 45'
- ★★★★★ Pluto conjunction Ascendant, orb 5° 57'

Meaning of Stars

Stars indicate the strength of the aspects. Two solid coloured stars (there are half-stars also), mean that the aspect is powerful enough to be noticed at the first reading.

We strongly advise that you read the paragraphs displaying less than two stars later on, after you have absorbed the full import of the other texts.

The yellow colour indicates a soothing and conciliating aspect, and the red colour, a dynamic and tense aspect. The red aspects enable you to evolve, to take action, and to learn to turn your "weaknesses" into assets through your life experiences. The yellow aspects are innate strengths on which you rely in order to grow better with the former...

Preamble

When interpreting a natal chart, the best method is to start gradually from general features to specific ones. Thus, there is usually a plan to be followed, from the overall analysis of the chart and its structure, to the description of its different character traits.

In the first part, an overall analysis of the chart enables us to figure out the personality's main features and to emphasize several points that are confirmed or not in the detailed analysis: in any case, those general traits are taken into account. Human personality is an infinitely intricate entity and describing it is a complex task. Claiming to rapidly summarize it is illusory, although it does not mean that it is an impossible challenge. It is essential to read a natal chart several times in order to absorb all its different meanings and to grasp all this complexity. But the exercise is worthwhile.

In brief, a natal chart is composed of ten planets: two luminaries, the Sun and the Moon, three fast-moving or individual planets, Mercury, Venus and Mars, two slow-moving planets, Jupiter and Saturn, and three very slow-moving planets, Uranus, Neptune and Pluto. Additional secondary elements are: the Lunar Nodes, the Dark Moon or Lilith, Chiron and other minor objects. They are all posited on the Zodiac wheel consisting of twelve signs, from Aries to Pisces, and divided into twelve astrological houses.

The first step is to evaluate the importance of each planet. This is what we call identifying the dominant planets. This process obeys rules that depend on the astrologer's sensitivity and experience but it also has precise and steady bases: thus, we can take into account the parameters of a planet's activity (the number of active aspects a planet forms, the importance of each aspect according to its nature and its exactness), angularity parameters; (proximity to the four angles, Ascendant, Midheaven, Descendant and Imum Coeli or Nadir, all of them being evaluated numerically, according to the kind of angle and the planet-angle distance) and quality parameters (rulership, exaltation, exile and fall). Finally, other criteria such as the rulership of the Ascendant and the Midheaven etc. are important.

These different criteria allow a planet to be highlighted and lead to useful conclusions when interpreting the chart.

The overall chart analysis begins with the observation of three sorts of planetary distributions in the chart: Eastern or Western hemisphere, Northern or Southern hemisphere, and quadrants (North-eastern, North-western, South-eastern and South-western). These three distributions give a general tone in terms of introversion and extraversion, willpower, sociability, and behavioural predispositions.

Then, there are three additional distributions: elements (called triplicity since there are three groups of signs for each one) - Fire, Air, Earth and Water - corresponding to a character typology, modality (or quadruplicity with four groups of signs for each one) - Cardinal, Fixed and Mutable - and polarity (Yin and Yang).

There are three types of dominants: dominant planets, dominant signs and dominant houses. The novice thinks astrology means only "to be Aries" or sometimes, for example, "to be Aries Ascendant Virgo". It is actually far more complex. Although the Sun and the Ascendant alone may reveal a large part of the character - approximately a third or a half of your psychological signature, a person is neither "just the Sun" (called the sign) nor just "the first house" (the Ascendant). Thus, a particular planet's influence

may be significantly increased; a particular sign or house may contain a group of planets that will bring nuances and sometimes weaken the role of the Ascendant, of the Sun sign etc.

Lastly, there are two other criteria: accentuations (angular, succedent and cadent) which are a classification of astrological houses and types of decanates that are occupied (each sign is divided into three decanates of ten degrees each). They provide some additional informations.

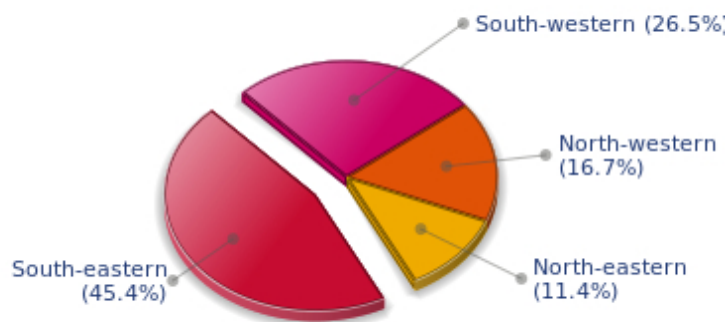
These general character traits must not be taken literally; they are, somehow, preparing for the chart reading. They allow to understand the second part of the analysis, which is more detailed and precise. It focuses on every area of the personality and provides a synthesis of all the above-mentioned parameters according to sound hierarchical rules.

As explained in the introduction of your Psychological Portrait report, minor dominants are analysed at the end of Annex 1, for purposes of clarity.

Your Planetary Repartitions

Each quadrant is a combination of the four hemispheres of your birth chart and relates to a character typology. The Southern hemisphere – the top of your chart, around the Midheaven – is associated with extraversion, action, and public life, whereas the Northern hemisphere prompts to introversion, reflexion, and private life. The Eastern hemisphere – the left part, around the Ascendant – is linked to your ego and your willpower, whereas the Western hemisphere indicates how other people influence you, and how flexible you are when you make a decision.

Your Four Quadrants

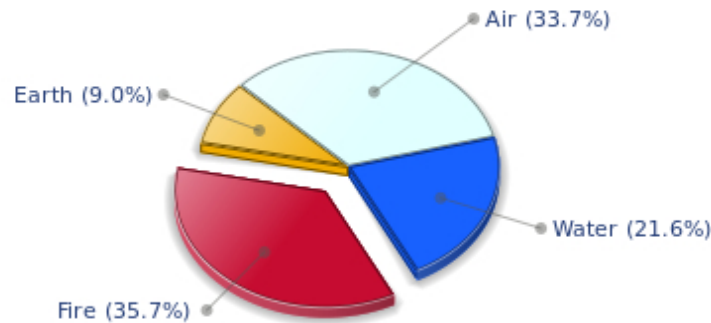


Tom Brady, the diurnal South-eastern quadrant, consisting of the 10th, 11th and 12th houses, prevails in your chart: assertion and goals achievement are at the centre of your concerns. You are very keen to implement your dreams and your plans. You achieve your ambitions as soon as possible, whether through an active social life, highly charged friendly relations, or an urge to take actions in order to reap - in the eyes of the world, of course - the rewards of your dynamism. It is likely that spirituality or humanitarian actions are part of your motivations, sometimes at the price of some degree of isolation.

Your Dominant Modes and Elements

Tom Brady, here are the graphs of your Elements and Modes, based on planets' position and angles in the twelve signs:

Your Four Elements



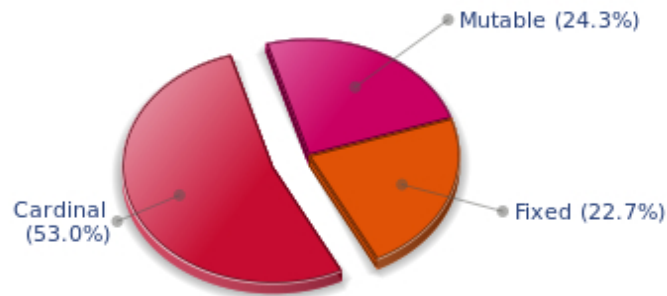
Tom Brady, Fire is dominant in your natal chart and endows you with intuition, energy, courage, self-confidence, and enthusiasm! You are inclined to be passionate, you assert your willpower, you move forward, and come hell or high water, you achieve your dreams and your goals. The relative weakness of this element is the difficulty to step back or a kind of boldness that may prompt you to do foolish things.

Cheers for communication and mobility, Tom Brady! The predominance of Air signs in your chart favours and amplifies your taste for relations and for all kinds of short trips, whether real (travels) or symbolic (new ideas, mind speculations). You gain in flexibility and adaptability what you lose in self-assertion or in pragmatism.

Earth qualities are under-represented in your chart, with only 9.02% instead of the average 25%. Deficiency in Earth may indicate that you have no interest in material and concrete values. It is likely that you live too much in your heart or in your mind, or even in your enthusiasm! The fact remains that you may end up in tricky situations, due to your lack of good sense or forethought: material life is unavoidable even if you are rather idealistic, dreamy, or easily content. You must tackle concrete life necessities, for fear of... being forced to cope with them, later, in much more unpleasant ways!

The twelve zodiacal signs are split up into three groups or modes, called quadruplicities, a learned word meaning only that these three groups include four signs. The Cardinal, Fixed and Mutable modes are more or less represented in your natal chart, depending on planets' positions and importance, and on angles in the twelve signs.

Your Modes



Tom Brady, the Cardinal mode is dominant here and indicates a predisposition to action, and more exactly, to impulsion and to undertake: you are very keen to implement the plans you have in mind, to get things going and to create them. This is the most important aspect that inspires enthusiasm and adrenalin in you, without which you can grow weary rapidly. You are individualistic (maybe too much?) and assertive. You let others strengthen and improve the constructions which you built with fervour.

Your Dominants: Planets, Signs and Houses

The issue of dominant planets has existed since the mists of time in astrology: how nice it would be if a person could be described with a few words and one or several planets that would represent their character, without having to analyse such elements as rulerships, angularities, houses, etc!

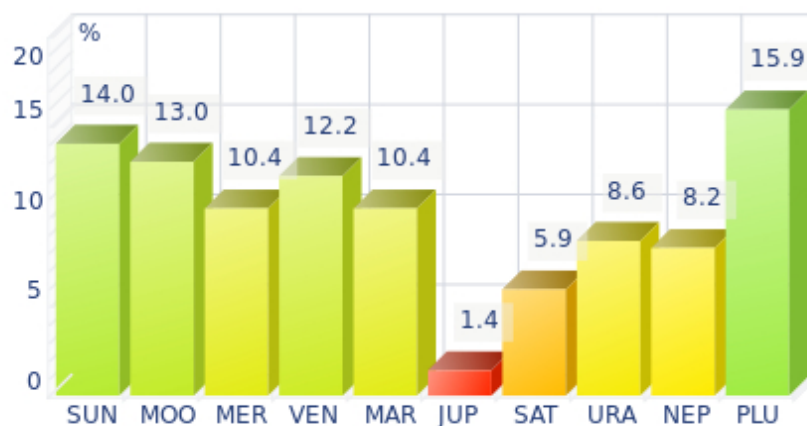
The ten planets - the Sun throughout Pluto - are a bit like ten characters in a role-play, each one has its own personality, its own way of acting, its own strengths and weaknesses. They actually represent a classification into ten distinct personalities, and astrologers have always tried to associate one or several dominant planets to a natal chart as well as dominant signs and houses.

Indeed, it is quite the same situation with signs and houses. If planets symbolize characters, signs represent hues - the mental, emotional and physical structures of an individual. The sign in which a planet is posited is like a character whose features are modified according to the place where he lives. In a chart, there are usually one, two or three highlighted signs that allow to rapidly describe its owner.

Regarding astrological houses, the principle is even simpler: the twelve houses correspond to twelve fields of life, and planets tenanted any given house increase that house's importance and highlight all relevant life departments: it may be marriage, work, friendship etc.

Tom Brady, here is the evaluation diagramme for your planets:

Your Dominant Planets



The three planets that are most highlighted in your chart are Pluto, the Sun and the Moon.

With Pluto as a dominant planet in your chart, you are a magnetic and mighty predator, like the Scorpio sign ruled by this planet, who needs to exert pressure on others in order to "test" them. You are always ready to evolve, to risk destruction for reconstruction - including your own - to live more intensely whilst imposing your secret authority on things and on people you encounter.

You may come across as wicked, cruel or too authoritarian, but actually you only follow your instinct, you sound people out, and you like to exert your domination simply because your vital energy is too powerful to remain inside. You are inclined to be passionate, with hidden motivations. You are sometimes misunderstood but one of your great Plutonian assets is to go successfully through each life ordeal with ever growing strength.

One of the dominant planets in your natal chart is the Sun. He symbolizes will, magnetism, sense of honour and dignity. You are a Solar being, and you often display charismatic and leadership qualities. Your warmth and your persuasive power lead you far away from pettiness. You enjoy thinking big and, consequently, you move forward according to what you decide.

Your Solarian weakness may be related to the sin of pride or to excessive authority. The frontier between pride and vanity is tenuous: be careful not to overstep it and to keep the nobleness of heart that is part of your charm.

The Moon is one of the most important planets in your chart and endows you with a receptive, emotive, and imaginative nature. You have an innate ability to instinctively absorb atmospheres and impressions that nurture you, and as a result, you are often dreaming your life away rather than actually living it.

One of the consequences of your spontaneity may turn into popularity, or even fame: the crowd is a living and complex entity, and it always appreciates truth and sincerity rather than calculation and total self-control.

As a Lunar character, you find it difficult to control yourself, you have to deal with your moods, and you must be careful not to stay passive in front of events: nothing is handed on a plate, and although your

sensitivity is rich, even richer than most people's, you must make a move and spare some of your energy for... action!

Your Dominant Signs



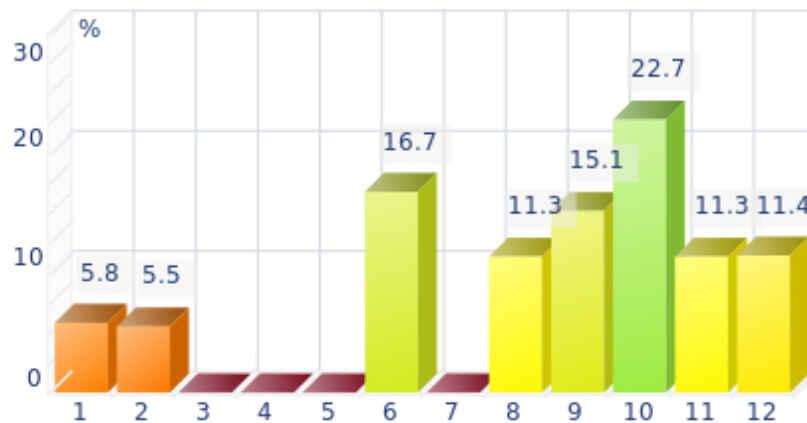
In your natal chart, the three most important signs, delineated according to the above-mentioned criteria, are, in decreasing order of strength, Libra, Leo and Cancer. They are often prominent because your Ascendant and your Sun are posited there. However, it is not always the case: it may be because they are occupied by a cluster of planets, by a planet near an angle other than the Midheaven and the Ascendant, or because two or three planets are very active and form numerous aspects from these signs. Therefore, you partly take on the three signs' characteristics, which are somehow superimposed on your natal chart, and all the more so if any of the signs in question is highlighted.

With Libra as a dominant sign in your natal chart, you love to please, to charm, and to be likeable. Moreover, you are naturally inclined towards tolerance and moderation, as well as elegance and tact, as if you were meant to please! Of course, you always find malcontents who criticize your lack of authenticity or of courage and your half-heartedness, but your aim is to be liked, and in this field, you are an unrivalled champion!

With Leo as a dominant sign, you naturally shine brightly. Your dignity, your sense of honour, and your generosity can almost turn you into a solar mythological hero, a knight or a lord from the ancient times. People may blame you for your selfishness, your pride or your somewhat loud authority, but if you are self-confident, kind-hearted and strong-willed, it surely makes up for your little flaws, as long as they remain moderate...

Cancer is one of your dominant signs and endows you with imagination and exceptionally shrewd sensitivity. Although suspicious at first sight - and even at second...- as soon as you get familiar with people and let them win your confidence, your golden heart eventually shows up, despite your discretion and your desire for security that make you return into your shell at the slightest alert! Actually, you are a poet and if you are sometimes blamed for your nostalgia and your laziness, it is because your intense inner life is at full throttle...

Your Dominant Houses



Houses 10, 6 and 9 are the most tenanted ones in your natal chart. To compute their strength, planets and angles are weighed according to various astrological criteria such as swiftness, activity, angularity, rulership etc. From the analysis of the most tenanted Houses, the Astrologer deduces the fields of activity that are most relevant to you, be it because of what you are experiencing, or what you may experience in the future, or because of your deep inner motivations.

With a prominent 10th house, your destiny's achievement may be very notable: the 10th house represents your career, your public life, and your ambitions. A good deal of your energy may thus be used to successfully implement what you have in mind. Instinctively, you are very keen to make your dreams come true. Sooner or later, you will deal with the public, and your personal achievement will go through trials and ordeals: other people and visible actions.

Your 6th house is quite emphasized and indicates interest in work and daily occupations that take up a lot of your time: in analogy with Virgo, this house inclines towards perfectionism and training; somehow, you may be fulfilled through the process of being useful and investing your energy in your work. An environment appealing to you may be involved - your colleagues, for example - or a passion for one of these daily occupations. Medical positions or pets may play a role in your life; or ancillary love affairs too... These are a few possibilities indicated by an important 6th house.

Your 9th house being one of your most tenanted house, or at least emphasized, travels and faraway places play a major role for you: travels may take place in a symbolic sense, namely mind speculations or conceptions about political matters, philosophy, religion or spirituality, or in the literal sense, such as real long distance travels by plane. It may also be that you spend a part of your life far from home, etc. You are driven by some kind of rebelliousness, which urges you to explore the Unknown; it may also be the call of the adventure. Besides, if the rest of your chart concurs, you may be considered as a real draught, often up hill and down dale, constantly on the lookout for exciting discoveries and new, enchanting horizons.

Your Style, Behaviour, and Peculiarities

What is commonly known as "sign" indicates the position of the Sun in the Zodiac. The Sun highlights all the characteristics of the sign he tenants. According to astrology traditional rules, these characteristics are all the more pure and exact when the Sun is strong in the sign, or when the sign is particularly highlighted within the chart. Here, we indicate the pure characteristics of the sign but you must bear in mind that they may only shed a light on a particular aspect of your personality. Indeed, the sole sign of the Sun, or of the Ascendant, can never describe an astrological chart because it depends on the degree of strength of the said sign in your chart.

Another important point must be underlined. Contrary to the Ascendant, which clearly describes your appearance, your vitality, your physical constitution, your spontaneous behaviour and the image you project, your Sun sign describes your inner self, which you may not completely be aware of, and which may emerge gradually as you mature: it is about your inner personality that you reveal only to the members of your entourage whom you trust. The Sun sign is likely to be the final form of your personality, once it has evolved in line with the energies of the other parts of your chart, the beginning of which is seen in the Ascendant, your external "bark".

The Ascendant is one of the major components of your natal chart. It is the zodiacal sign that rises in the East at the very moment of your birth. To calculate it, it is therefore necessary to know your exact time of birth.

It provides with a wealth of information on your personality. It is one of the key features that allows the analysis of several parts of you, such as your appearance, your character as it is initially perceived and your immediate behaviour. It describes the external aspect of your personality which you always display, but it also describes your physical constitution in the long-term, in other words, your health.

Please be aware that, in spite of the importance of the Ascendant, the accuracy of its description depends on how strongly highlighted it is in your natal chart. We use the entire set of astrological rules to assess the strength of the Ascendant. In most cases, the Ascendant is as revealing as your "sign", i.e., the sign where the Sun is posited at the time of birth.

You were born under the sign of Leo and your Ascendant is in Libra

Before broaching the details of the meaning of your Sun and your Ascendant, as a preamble, we offer a brief generic interpretation of their combination in your chart:

What a socialite you are! You are attracted to all things beautiful, grand, and fair. You are airy, delicate, tactful, and refined, and you come across as a nice person. Your Libra Ascendant endows you with negotiation and arbitration talents, as well as with impartial judgment abilities. People may believe that you are a bit wavering, but they do not think that you are willing to dominate people. Because Libra is a Cardinal sign, it finds it natural to take the initiative, strike up a conversation, and establish contacts. Your Leo Sun defines your inner self and, unlike Libra, shows less subtlety in relationships. Indeed, since Leo's main concerns are about dignity and frankness, it does not beg people's support, but it prefers to command respect through its magnanimity and its feats, whether they refer to its creations, its look, and its actions. Your friends and relatives know that deep down, you want to impress and be

admired, and that beneath your delicate facade, lie great obstinacy and fortitude.

You were born with the Sun in Leo

Psychologically speaking, your nature is powerful and self-assured. You are a leader whose strength and nobleness naturally arouse your entourage's respect and adherence and your legitimacy is unquestioned. Your sense of commandment, the honour your person constantly exudes, your prestige and your charisma is a whole which puts you into the spotlight wherever you go.

As you are born under this sign, you are proud, determined, wilful, loyal, solemn, generous, ambitious, courageous, heroic, full of vitality, creative, confident, seductive, happy, daring, proud, majestic, honest, magnanimous, charismatic, responsible, noble, brilliant, radiant, dramatic, affectionate, full of humour, demonstrative, swaggering and self-confident. You can also be domineering, conceited, touchy, authoritarian, stubborn, intolerant, self-centered, irascible, violent, and nonchalant.

In love, Sir, you are very demanding. You are a powerful and loyal lover. Your partner must be the most beautiful and the most brilliant person and she must make you feel that she admires you. In such a case, your generosity has no limit and you give your love without reservation, with nobleness, liberalities and luxury. You set up a stable and brilliant home where children have the essential part.

The main danger is that you value trust to the extent that you grant it generously but too hastily: if you happen to find out that your trust is misplaced, the whole world around you crumbles and the relationship is forever damaged. In this regard, you are cut-and-dried and you feel so hurt and humiliated that you seldom can forgive.

Another similar danger comes from the fact that your expectations are very high and it is very unlikely that real life offers such unconditional and lasting love: for this reason, it is not unusual that you never marry, all the more so because your self-centered character is not prone to self-questioning...

Your Ascendant is in Libra

Psychologically speaking, your nature is sanguine and communicative or nervous and introverted, depending on who prevails, either Venus, the principle of harmony, extraversion, desire to seduce, easy and airy communication, or Saturn, the principle of rigour, introversion, self-control, concentration and meditation. Unless Saturn is very strong in the rest of the chart, Libra is very delicate and charming. She easily adjusts in society, particularly with her perpetual search of compromise. It is the reason why you may seem to be hesitant and weak. You do not dare to insist or to assert your views: you prefer to intervene as an agent for harmony, of rally and equity, even to the detriment of your self-assertion. You loathe violence and you strive with all your heart to pacify, to smooth things over, and to adjust to the situation with flexibility and grace.

Since you are born under this sign, you are sentimental, charming, courteous, delicate, refined, loyal, pacifist, fair, distinguished, light, romantic, cultured, airy, likeable, spruce, perfectionist, caring, gentle, quiet, tidy, social, artist, with strong aesthetic tastes, tolerant, lenient, sociable, seductive, elegant, kind, respectful, balanced, but you may also be hesitant, weak, wavering, selfish, fragile, indecisive, timid, indolent, cold or even insensitive.

In love, Sir, you cannot help but try to seduce wherever you go, and you succeed fairly well. You are a

real heartbreaker and your natural gift borders on impertinence and injustice, from the outsider's point of view!

You are so likeable, easy to deal with, caring, smiling, diplomatic, you establish connections with such great ease, that you attract a majority of women, including those you are not interested in. It is not a game, it is your nature. Each and everyone believe to be the object and the target of your favours whereas, in fact, it is the way you behave with everybody.

You cannot stand solitude at all: you prefer to be ill-accompanied rather than to be alone. There is a danger that you remain attached to a person who does not suit you best. You are spoiled for choice. You should be able to find a suitable match and to reach the state of harmony that is the centre of your deep motivations.

You are a perfectionist, like Leos who are so demanding regarding the quality of their partners. Real life is seldom as beautiful as your ideal and you may be deceived and badly wounded if your couple should break down. But you will pursue the quest of your soul mate with all the natural qualities that are almost entirely dedicated to this search.

The ruler of your chart is in Cancer

The ruler of the Ascendant, also referred to as the chart ruler, brings a few interesting nuances to the meanings provided by the Sun and the Ascendant. The sign in which the ruler of the Ascendant is positioned fine-tunes the style of personality described by the Sun and the Ascendant. It may strengthen it if the sign is identical to either of them.

The ruler of the Ascendant, Tom Brady, is Venus. In the sign of Cancer, it enables you to grasp the surrounding ambience and impressions as if you were an emotional radar. Therefore, you may shift from enthusiasm to boredom or rejection, should you subtly sense that you are appreciated or spurned, even though your feelings are unfounded.

Aspects to your Ascendant

Several planets form an aspect with your Ascendant, Tom Brady. Therefore, in their specific way, they modify your behaviour and your personality, which do not take on the pure characteristics of your Libra Ascendant only, but which are a blend of its characteristics with those of the said aspects.

★★★★☆ Saturn sextile Ascendant, orb -1° 18'

Saturn is in soft aspect with your Ascendant, Tom Brady. This harmonious configuration brings about a responsible, loyal, persevering, and patient behaviour, and in a word, reliable. Your seriousness is appreciated, and owing to your capacity to easily analyse situations, you come across as a sincere and trustworthy person.

★★★★☆ Pluto conjunction Ascendant, orb 5° 57'

Pluto is in conjunction with your Ascendant, Tom Brady. The planet of taboos, power, secrets, and instinct endows your behaviour with an uncontrollable domineering note which is not negative as such. At the same time, it also provides you with exceptional lucidity. In spite of yourself, Pluto prompts you to discover people's secrets, to provoke them in order to better understand their "truth". Your mysterious and slightly frightening magnetism is definitely part of your seduction!

★★★★★ Mars trine Ascendant, orb 6° 07'

Your vitality and your taste for action are obvious, Tom Brady. Thanks to Mars, your behaviour is often perceived as energetic, or at least, as action-oriented and enterprising. Your dynamism is one of your constant assets.

★★★★★ Neptune sextile Ascendant, orb -4° 22'

Neptune in soft aspect with your Ascendant endows you with a sharp intuition which enables you to instinctively adopt the behaviour which your entourage appreciates, Tom Brady. You have the natural flair which prevents you from making errors of judgment on people. You understand the crowd, and you have the good reflexes for being well-accepted by all.

Your Sensitivity

Your temperament is impulsive, Tom Brady, you are fond of instant thrills and you do not like to wait because you grow weary quickly. With you, things must keep moving fast! Your vivid imagination triggers enthusiasm, audacity and independence because you need to undertake and to achieve. You do not fear to be defeated and, far from slowing you down, rivalry and struggle have a stimulating effect. Because of your sensitivity all on edge, you are irascible and unpredictable: it is easy to unwillingly get you started and this makes your life a bit difficult with the family and with friends. You are perceived as an impatient person, short-tempered, whimsical, unstable and even, aggressive, and people think that you don't take your entourage's needs into account. However, you may also be warm, ready to help and to comfort whenever you are able to control your impulsiveness. You must not be worried about losing your identity when you listen more to your close friends...

Tom Brady, it is likely that you are popular in your work environment, and you may even be considered to be some kind of star by your colleagues. Or, if it is not the case, you have a clear tendency to react emotionally, very quickly and strongly in this sphere. At work, you need to feel liked and appreciated and to be shown accordingly!

You are mobile and changeable in your profession, and to tell the truth, your everyday life is full of surprises. Sensitive and imaginative, you are vulnerable to others' opinions. Health issues concern you more than they should; beware of not becoming a hypochondriac, some day...

★★★★★ Moon opposite Pluto, orb -5° 31'

This planetary configuration causes distrust (Plutonian distance) towards individuals, groups, or your own family environment (lunar values). It may bring about a feeling of affective or relational wound. The feeling of security is absent, or fragmented or illusive. How is it possible to feel integrated whereas you know that you are different and on your own? It is the myth of the « ugly duckling », with its different specific characteristics, an alien to its origins and its roots. It is important that you accept your differences and that you have them accepted by others, without forsaking your essential values. This is how you can exercise your group ownership without allowing them to exclude you or to repress your secret determinations. When this aspect is well integrated, it is a factor of lucidity for your emotions. You perceive without gullibility what is really at stake in your intimate relationships and the flaws of your environment. The fact that you do not readily trust people spares you many traps and delusions.

★★★★★ Sun trine Moon, orb 4° 54'

This aspect is a strong homogeneity factor: the image you project is in conformity with your real nature and does not upset your basic balance. This is probably the cause of your feeling at ease, your consistent behaviour and your determination to remain your true self, regardless of external pressures and whatever is expected from you. At best, your will and your sensitivity are in harmony, your unconscious abilities are mobilized and controlled by your conscious will, with no imbalance. However, it is important to avoid the traps of self-satisfaction that would be harmful to your real exchanges and would lock you up in comfortable and rigid schemes. It is possible to remain natural and yet, not be content with the sole well being of those who never cheat themselves.

★★★★★ Moon square Venus, orb -5° 16'

With this Moon-Venus aspect, passion and sensuality may often upset your well being and your tranquillity. Your way of loving is dual. You either accept life simple joys, or you live through intense emotions and consuming fevers. It is difficult for you to reconcile your daily life with your affective or

sensual desire. Habits kill passion, whereas passion forbids the carelessness that is yet indispensable for your fulfilment. This aspect suggests the traditional mother/woman and father/lover antagonisms that are incompatible although it is possible to experience them alternately. It is important that you balance these antinomial desires: you may let the turmoil of your heart break the monotony of an amorous life devoid of excitement but it does not mean that you must forsake the reassuring values of a couple, or family cell, where you can rest at will and give free rein to your intimate behaviour. You may indulge yourself but don't forget that you must deserve love.

★★★★★ Moon inconjunction Uranus, orb -1° 26'

The Moon and Uranus intrinsically share little in common: they get along as well as fire and water! It is difficult for you to reconcile your desire for well being and intimacy with your destiny's dazzling passions and thunderbolts. You may feel that your intimate and family realm hampers your freedom. There is a potential for crises, explosions or splits. The desire for independence does not get on well with security concerns. There may be strong temptations endangering your very life foundations and you may embark upon a liberating and personal adventure. However, you fear rash decisions. Your need for security may temper your impulses and put a brake on your individualistic aspirations. To harmonize these tendencies within your intimate life, you must leave yourself enough room for personal expression or for an activity of your own. Otherwise, as days go by, built-up tensions may jeopardize the quiet course of your life.

★★★★★ Moon trine Neptune, orb -7° 06'

This harmonious Moon-Neptune aspect indicates an exceptional receptivity. You are sensitive to ambiances and you can grasp what is at stake in any given situation. You can pick up things in the general atmosphere that the majority of people miss out. Your deep intuition allows you to feel the subtlest details, that « little nothing » which is the key to behavioural patterns. Inspiration is your guide and imagination accompanies your daily rhythms. Mysteries, psychology, esoterism, fantasy, the supernatural... one of these fields, at least, is of concern to you. You pay utmost attention to your inner life, to moments of tranquillity when you relax, when you allow your mind to wander at will. The danger is that you may seek refuge in the imaginary and that you shirk reality.

★★★★★ Moon sextile Mars, orb 5° 21'

Your vivid imagination goes hand in hand with you desire to make your dream come true and to struggle, so as to remain true to yourself. You easily mobilize your energy and your resources. This harmonic Moon-Mars aspect indicates the will to keep your intimate balance under all circumstances. You thrive in action; you court danger, particularly when your regular environment is endangered. In the private sphere, you exhibit complete straightforwardness. This planetary configuration allows you to quickly get back on your feet within a new context. You adapt well to unprecedented situations. Your capacity to integrate events rapidly can only increase your adaptation abilities.

★★★★★ Moon sesqui-quadrate Saturn, orb -2° 12'

When this aspect is not well integrated, there is no feeling of integration and security. You feel that you are not understood or even, that you are rejected. It is difficult for you to find inner peace and tranquillity. You lack the quietness and the primordial confidence that would allow you to lay back and to be carried away and pampered by life. This configuration indicates questionings and doubts regarding the unconditional affection that each individual longs for. You do not trust the world. You tend to dismiss social models, as well as your close friends' attachment and tenderness, probably because you need to test them and to get the feeling of being loved that you naturally lack. It would be a mistake not to see that you desperately need affection. You are particularly vulnerable to relationship flaws and you

strive to find the gestures of love that would allow you to let go and to be nurtured by life. In such a context, the sincerity you display, as you give or refuse your trust, is highly commendable.

Your Affectivity

In your chart, the Sun is in Leo and Venus, in Cancer. Is Sun in Leo's desire for conquest compatible with Venus in Cancer's fundamentally selective character? The need to shine, with the desire for security? These antagonisms constitute the complexity and the richness of your affective life. However, these two summer signs have in common an exacerbated sensitivity and an emotionalism all on edge. While Leo is conquering, Cancer wants to be tender. Both signs are selective, touchy and often whimsical. Your concept of the couple is dramatic, as demanding as it is thrilling and, at the same time, pernickety and endearing. Your affective fulfilment goes through a double desire: esteem and recognition for the Sun in Leo, and situations of confidence and intimacy for Venus in Cancer. Such desires are not incompatible, despite the difference of their nature. If your partner can grasp the ambiguous character of this duality, your attachment will be unailing.

You are sensitive, vulnerable and tender at the same time, Tom Brady. When you love, you give your entire affection and your partner may in all confidence rely on a long-lasting and reassuring relationship. You are so calm and so tender that you think that it is enough to win over your partner's heart, and you are often right. However, do not mix up giving and receiving. You so deeply need to receive love in return that you may be too passive and in the long run, as you become demanding, you may show immaturity. Security and sustainability in your relationship are of utmost importance. Your family also is important, it is the refuge, even the sanctuary, where you like you hide when things go awry. You also dream of love, may be too much, and it may be detrimental to what might be concretely experienced if you were more dynamic or less fearful to get hurt. However, remember that you receive only as much as you give.

Tom Brady, the choice is yours: love encountered while travelling abroad, or just love for travels and focusing your feelings upon this ideal of evasion towards far-off lands? Or may be both. In any case, you often tend to fall in love, and even to get married, with a person of foreign origins. Exoticism and difference mysteriously appeal to you and there is little you can do against it. Early in life, you have a craving for space and for changes, particularly regarding your feelings: there is not a single chance that you are content with habits or that you refuse any new and exciting experience full of unusual and unknown features. You are always on the move and you feel so great when you finally find yourself in a ship at the other end of the world or somewhere in an airport, with all your senses stimulated, ready to be seduced by the unusual charm of the person whom you will meet and who will not resemble you. Your feelings are vast and generous, sometimes even sublimated and idealized because you so adamantly refuse any limitation. You have an undying thirst for higher knowledge that can only be gained in the field of spirituality or, in the literal sense, through roaming about remote lands, or also analogically, through interacting with culturally different people who have so much to teach you. Your feelings are coloured with the distinctive nobleness and long-term vision that characterize broad-minded persons who do not look at things with an ego-centered and simplistic glance. It is true that, seen from an airplane, the authenticity of all things important stands out finally with more acute sharpness...

★★★★★ Venus conjunction Jupiter, orb 4° 11'

Charm and seduction are your assets. This harmonious Venus-Jupiter aspect favours your affective fulfilment and your sentimental well being. You earn your entourage's sympathy thanks to your conciliating sensitivity, your desire to please and your behaviour in society. In many circumstances, you arouse esteem and consideration – essential values to you. You like social whirls, life in society, the aesthetics and the arts. You often tend to look for the easy way out in your business and your affective relationships. You are known as a complacent person. However, your amorous commitments may be quite superficial. It is important that, without breaking the spell, you opt for a more genuine attitude, respectful of your essential desires. As we all know it, love cannot be bought. An indication of balance: because you are aware that compromises are necessary for a love affair to endure, better than anyone else, you know how to maintain harmony in love.

★★★★★ Venus trine Uranus, orb 6° 43'

Your charm lies in the originality of your approach to love and in your uncompromising attitudes. Your motto? Freedom of love, whatever the price! Should your sentimental life become dull, you find a solution: you are romantic and you reinvent your couple's life, you give a new and unexpected momentum to your emotions. You create the kind sharpness that contributes to your exceptional affective life. You do not fear love at first sight or blazing passions. On the affective plane, you know where you are heading for, whom you love ... or love not. There is an indisputable intransigence. The heart impulses are irrevocable and implacable. You dream of a sentimental life that fulfils your aspirations and you use all possible means to achieve your ideal. Even though you may have to make the necessary sacrifices.

The Way You Take Action and Your Sexuality

Tom Brady, your mental activity is exuberant. Ideas are buzzing at high speed and you have the ability to think of several different things and to simultaneously process them. You are less interested in actions on the concrete or physical plane, because once you “see” a solution, its implementation is not that important any more since the crucial thing is that your mind remains bubbling with excitement. You are cerebral and curious and your sexuality is filled with fantasies, where pleasant ideas are mixed up with amplifying and enriching desires. Therefore, you are not simple but if your partner follows you, the stake is really worth it. Verbal jousting, the pleasure to debate and to discuss are continuous, with you. The only danger is to irritate people who may not have your swiftness or your sense of humour.

Tom Brady, this atypical configuration in your natal chart is one of the most complex to describe because of the very nature of the 8th house, the house of transformation, of crises leading to personal reconstruction, but also the house of sexuality, hidden knowledge, investment and inheritance.

In addition, the 8th house always deepens emotions and quickly brings passion into the previously mentioned areas. In this house, the quality of Mars' expression depends on the rest of the natal chart.

In order not to make mistakes, it is safer to talk about a possible range of fields of predilection: your energy can be expressed efficiently in areas dealing with financial investment, death, possessions and sexuality.

This configuration may also simply increase the intensity of emotions connected with these hidden

topics and, depending on the rest of your natal chart, it may or may not translate into life assets. More than with any other placement, you can be born again from your ashes, like the phoenix. After having undergone a few major ordeals, it is likely that you will have the strength and courage to do so.

★★★★★ Mars opposite Neptune, orb -1° 45'

You behave like a bohemian person and you are led by an ideal that you may not control. Your passions are undoubtedly sincere. However, you may target wrong objectives. You engage on hopeless struggles and meaningless confrontations. It is important that you watch out for fanaticisms from all sides and that you remain clear-sighted in the face of your exalted feelings. Your sincerity may work wonders when you champion lost causes. The most difficult thing is probably to keep your exacerbated sensitivity under control. Because you are deeply moved by facts, because you are sensitive to injustices and to the world's woes more than the average people, you embark on incessant battles, at the risk of undergoing a few delusions, on occasions.

★★★★★ Mars trine Pluto, orb 0° 09'

You have a very personal way of taking action and of experiencing confrontations and struggles. The laws of the world are subtle, often with complex and hidden mechanisms. For these reasons, you prefer to act behind the scenes rather than openly. You manage your daily life in a distant and subtle fashion while you try to understand the logic underlying observed facts. You may also provoke events although you act as if you were not concerned. Your interventions will be as efficient as they are discreet. You may secretly transform your life and you live through the inexpressible motivations that connect you with the invisible realm. Things, which cannot be formulated, must be experimented and felt. You test experiences that your entourage find uninteresting and meaningless.

★★★★★ Sun sextile Mars, orb -0° 26'

This planetary Sun-Mars aspect reinforces courage, determination and energy. The need for action is obvious. Whatever your will designs is implemented with fieriness, despite all oppositions. You are decisive and wilful, even foolhardy. Your behaviour may be heroic: you know how to face adversity, to stand for your rights and your decisions, regardless of the confrontations you may have to cope with. The only danger may be that you overestimate your chances and your strength. But your audacity turns out to be rewarding, more often than not.

Your Intellect and Your Communication Style

Your capacities for logic and analysis are very good, Tom Brady, and you evaluate each and every aspect of a given situation in objective and critical ways. You are industrious, methodical, with a lot of nervous energy, you pay attention to details and you may spend lots of time in intellectual and painstaking works. Although you are articulate, you do not like to be in the forefront and you prefer to work in team rather than to take initiatives: you feel less anxious when you know what is exactly expected from you and what you need to do. You tackle problems with rationalism and you distrust imagination and intuition. You love letters as much as you love figures. Your caustic humour may destabilize your entourage who may prefer that you were less demanding and more demonstrative. Please bear in mind that not everything can be kept under control...

You are intelligent and brilliant as soon as you have identified a goal and you have partners to work with you. You are less inclined to undertake strictly personal projects, Tom Brady. Your mind and your

curiosity include friends and collective projects. You believe that your particularly well-developed sociability is an asset for them.

Collective works, customers and public domain appeal to you, and you feel that you can achieve in those fields. Your negotiating skills are paradoxically stronger when you face the anonymity of a group rather than in intimate individual exchanges, may be only because you have no real interest in your own projects, for several reasons.

★★★★★ Mercury sextile Uranus, orb $-0^{\circ} 18'$

Your state of mind is innovative and turns the surrounding world into a constantly moving field of experiences. You ask relevant questions ... and you answer them. Although you are flexible when you ought to, your principles and your beliefs are unwavering. It seems difficult to catch you off your guard. You multiply observations, relationships, contacts and you never lose face: actually, your mobility hides an unshakable determination and a deep lucidity. In a split second, you are able to catch the useful information or the enriching relationship. The original and fanciful steps you take exclude monotony. Your approach to life is amazing!

★★★★★ Mercury square Mars, orb $-3^{\circ} 36'$

This Mercury-Mars dissonance brings about impulsiveness into relationships and contacts. Your sense of controversy and criticism leads to blunders and thoughtless actions. Your verbal violence may harm the efficiency of your actions. You certainly display your views without circumlocution. Your straightforwardness would be commendable if it did not cause those blunders that spoil many situations. It is important that you learn to control your decisions, to coordinate your mental abilities and your fieriness, so as to fully express the quickness of your mind and of your action. Learn to count to ten before you say anything, as it is an excellent exercise for you!

★★★★★ Mercury square Neptune, orb $5^{\circ} 21'$

With this Mercury-Neptune dissonance, relations may be distorted by the mirages of sensitivity. You have to make an effort to keep your objectivity. If this aspect is not well integrated, it may harm your good evaluation of human stakes. Your intimate beliefs may limit the dialogue, as if a very specific sensitivity prevented true communication. It may be difficult to find the right wording to express fragile and ineffable experiences. Imagination in power is not easy to share and the poetry of your speeches may be beyond your audience's understanding!

★★★★★ Moon inconjunction Mercury, orb $1^{\circ} 45'$

The Moon suggests relaxation, whereas Mercury implies a discoverer's mind. They both make sense and each one requires special attention, as they are sometimes upsetting. This Moon-Mercury aspect is likely to bring about nervousness or instability. Nervousness stems from the multiplication of the spots of interest and the perpetual restlessness of your mind, which prevents relaxation and well being from settling in. The outside world constantly appeals to your attention and you shift from one issue to another, to the detriment of your tranquillity. Therefore, it is important that you find the balance between two antinomial attitudes: letting-go versus curiosity, tranquillity versus communication. The new persons you meet with are not necessarily trustworthy and there is no certainty that the contact is harmonious. It is important that you use both influences alternately.

★★★★★ Mercury quintile Jupiter, orb -0° 47'

You display strong abilities for adaptation, social insertion and various learning capacities. You are credited with an acute sense of relations, probably because you can speak other people's language. You easily assimilate the most varied settings and your qualities are acknowledged. Your attitude and the words you use have the power to seduce and to convince your entourage. Diplomacy is an asset in your game. You are fit for negotiation and you seek compromise solutions. The only danger may be that sometimes, you too readily accept agreements that turn out to be less positive than foreseen, after a while. This is the other side of the coin for your exceptional flexibility and your unquestionable tact.

Your Goals, Motivations, Career, and Destiny

Your Sun is posited in the 10th House

Tom Brady, your need for assertion is very strong. It is clearly oriented towards the success of your professional or social destiny, or at least, towards an important rise compared to your initial background; your effort, your will and your goals are well defined in your mind: you have a concrete vision of the kind of destiny you are interested in and you do not want to stay on the backstage! Because in traditional astrology, the Midheaven relates to the mother, should other configurations of your chart concur, your mother might favour your ambition or speed up the success of your career.

You have an innate sense of commandment and a definite taste for honours, prestige, recognition of your self-worth. You don't like vagueness and your objectives are very concrete. You want to quickly leave anonymity and the quietness of the dark, for which you have no affinity. Your determined attitude, and your irresistible desire to play an increasingly important role in the position you hold, are major assets for the actual achievement of your goals. You want to shine forth and to heave yourself up, always higher and higher.

There are real indications of fame, provided that other elements of your chart concur. Even though you did not rise to fame, it is likely that, in your area, you enjoy some degree of glory. You are efficient and, with the help of your organizational skills, it is not difficult for you to find your spot in the sunshine.

In some rare cases, your ascent goes beyond the average ones and it may occur on the spiritual plane instead of the professional or the social plane. Therefore, you may be called upon to play a solar authority role in line with your beliefs and your commitment. You may become a leader or a master in the path you have chosen.

Even though you may hesitate to admit it and to tell others, your frenzied inclination for success inevitably brings about conflicts of authority; striving to heave yourself up, too high and too quickly, to a level that is so different from the one you were at, not so long ago, exposes you to clashes with the hierarchy or with those whom you regularly outgrow in the course of your ambitious journey and who may not agree with you.

There is also the fearsome and dormant danger of exhilaration of power and its disastrous consequences; hopefully, you do not have to jump into it with both feet. A fair dose of detachment and meditation may spare you many a trouble.

The ruler of your chart is in the 9th House

The ruler of the Ascendant, also referred to as the chart ruler as explained in a previous chapter, is also posited in one of the twelve Houses of the chart. Just like the Sun in his House, the ruler of the Ascendant provides certain abilities, or it makes you appreciate more keenly certain areas of life.

The ruler of your chart is in the 9th House, Tom Brady. This position often gives you a strong taste for travels and foreign matters, whether through frequent real trips, or symbolically, through the pleasure to devote yourself to noble subjects: politics, religion, spirituality, or sciences. You feel the constant need to reach a higher level and to be on the move.

Aspects influencing your ambitions

Regarding your destiny or your career, the following aspects of your natal chart allow to fine-tune what has just been said above:

★★★★★ Sun trine Neptune, orb 2° 11'

This harmonious Sun-Neptune aspect indicates a highly developed intuition and clear-sightedness and sometimes, a sixth sense. Mental images or information drawn from the unconsciousness impress your mind. What was only a muddled feeling turns into certainty and deep conviction. You do not necessarily need to justify your attitudes: you take a decision because you feel that you have to do so, although you may not control the underlying logics. The danger is that you may follow fanciful or adventurous roads. Beliefs you cannot explain may prove wrong or over-optimistic. However, your intuition is seldom misleading. One last comment: there is often a keen curiosity for the « bizarre » and the paranormal with this planetary aspect.

★★★★★ Sun sextile Pluto, orb 0° 36'

This harmonious Sun-Pluto aspect indicates an exemplary clear-sighted mind. Without destabilizing your appearances or your personality mask, Pluto makes you aware of your subjective and questionable character, as well as of your manner. You never take yourself completely seriously. You have a good grasp of human nature's complex games, without gullibility, without excessive simplification. Because you can perceive hidden elements underlying any situation better than anyone else, you are acknowledged as perspicacious. This aspect allows you to distance yourself from difficult circumstances and to remain impassive when you must overcome pitfalls.

★★★☆☆ Sun square Uranus, orb -3° 27'

This Sun-Uranus dissonance indicates a dazzling will to be the centre of attention and to proclaim your specificity, by all means. This aspect belongs to the rebel and the revolutionary restive to all forms of authority and of model. To balance this interpretation, the strong need for autonomy bordering on frenzied individualism must be highlighted. You allow nothing or no one to hinder your chosen line of conduct. Obviously, your attitudes are inflexible. You prefer to continue to the bitter end, even when you are wrong, rather than to be more open to people's ideas. Tyrannical attitudes often turn against the perpetrator... However, this configuration is a powerful agent for creativity, provided your hothead and extremist nature is kept under control.

★★★★★ Sun conjunction Saturn, orb 7° 53'

This aspect indicates a firm and discreet will, a rigorous and objective character. You are clear-sighted, particularly in difficult situations. You enjoy the moments of calm and solitude during which you can

review your life at will. Your judgments are enduring and often extremist. You are outraged by injustice and inconsistency. When a problem arises, you do not take the easy way out with short-term solutions, on the contrary, you strive to solve the issue thoroughly. Better than anyone else, you challenge yourself, you review your choices and your attitudes. This is the reason why you are capable of handling crises and of overcoming any obstacle that requires an in-depth and relevant response. You may lack spontaneity but your behaviour reveals your wisdom. When you are facing an issue, you put forward the good question, to others, but also to yourself.

★★★★★ Sun semi-square Jupiter, orb -0° 37'

This Sun-Jupiter aspect indicates a strong desire for social and professional integration but it may cause a few difficulties of expression in that regard, owing to excesses or immoderation. There may be discrepancies between your objectives and the means implemented to achieve them. The danger of this configuration may be that you forsake an essential part of yourself for some ambitious but out of proportion plan. Too many efforts of adaptation and an excess of opportunism may make you miss the target. It is important that you remain true to your values and that you do not seek, at any cost, to adjust your attitudes to the situation. However, do not fall into the opposite trap: a need for the absolute that forbids compromises, although they are so necessary. You must reconcile idealism with the demands of the moment, the respect for principles with the sense of timeliness. When this configuration is not well integrated, things get out of hand. Extravagances are glaring. They may translate into an exuberant, overly demonstrative disposition. Personal ambition turns into pride, and joviality becomes immoderation. Outbursts of anger are frequent. However, in a reserved and cautious context, this configuration reveals its positive nature.

★★★★★ Neptune bi-quintile Midheaven, orb -0° 45'

Thanks to this soft aspect of Neptune to your Midheaven, Tom Brady, your intuition is very sharp, as far as your possibilities for success are concerned. Thus, you have no difficulties in finding your professional or social path, and your nose tells you whether something is good or not for you, even before you start to analyse it. Your imagination and your visionary qualities accompany you along your journey towards success.

★★★★★ Saturn semi-sextile Midheaven, orb -1° 04'

Thanks to this soft aspect between Saturn and your Midheaven, your long-term efforts and your perseverance are rewarded, and you gradually climb up the stairs of success. Time is your ally as far as your career and social destiny are concerned. Carry on the good work, and rest assured that your seriousness and your obstinacy are appreciated. They are instrumental in your success, especially during the second part of your life.

Your Assets and Your Part of Joviality

With the planet of Greater Fortune in this sign, Tom Brady, your abilities to communicate and your curiosity are considerably strengthened. You are articulate, you have an eloquent pen, and you multiply your centres of interest. Better than anyone, you can handle numerous different intellectual pursuits simultaneously and you increase the number of your friendly and professional contacts. Short and frequent trips are favoured. Just be cautious not to spread yourself too thin.

Jupiter brings you a heaven-sent present, Tom Brady, which is particularly nice because there is here an analogy between the planet and the house. Jupiter's broad, benevolent and warm vision of life is in line with the fields of higher education, philosophy, politics, and human sciences symbolized by the 9th House. As you mature, you radiate with wisdom. On the concrete plane, long-distance travels are very favoured, throughout your life.

The planet Jupiter symbolizes expansion, broadness and generosity. Jupiter is associated with the functions of synthesis, enthusiasm and optimism. In your natal chart, his house position is more important than his sign position because, like Saturn, Uranus, Neptune and Pluto, he is a slow planet. Many people born in the same period have Jupiter in the same sign. This is the reason why the sign occupied here is less meaningful than when it is occupied by the so-called fast planets, i.e. the Sun, the Moon, Mercury, Venus and Mars. Therefore, some caution is to be exercised as you read what follows.

Jupiter in Gemini increases your mental creativity, your imagination and your capacity for adaptation. The outcomes may not be seen externally but this configuration usually develops your sense of contact: when Gemini's well-known frivolousness and scattering meet with Jupiter's synthesizing mind and tidiness, it can only endow you with the best assets for your communication and intellectual pursuits.

Your Serious Side

Your ambitions and your self-perception are marked with some degree of detachment. You become less frivolous and more detached from individual and superficial values as time goes by.

Your responsibilities, Tom Brady, constantly increase, slowly, but steadily, as years go by. Your acute sense of duty, your good management of time, your long-term vision, and your moral rigour are the qualities which contribute to your inexorable rise to power with, deep down, odd feelings of anxiety.

With your definite taste for power or for success, you work your way up the top place. But the danger to fall is strong. You need as much persistence to reach the heights of your career, as to... remain there! Many Heads of State have this configuration, at the same time beneficial and a source of potential disappointments if too much importance and energy are dedicated to it. Indeed, climbing to the top should be only one facet of life.

The planet Saturn symbolizes contraction, effort, time, limitation and concentration. Saturn eliminates anything that is not authentic, sooner or later. It is impossible to cheat him as he gives an irresistible desire to form a coherent whole with oneself, in responsible and wise ways. He is the great purifier. He represents our limitations but also our truth. In your natal chart, the house position where Saturn is posited is more important than his sign position because, like Jupiter, Uranus, Neptune and Pluto, he is a slow planet. Many people born in the same period have Saturn in the same sign. This is the reason why the sign occupied here is less meaningful than when it is occupied by the so-called fast planets, i.e. the Sun, the Moon, Mercury, Venus and Mars. Therefore, some caution is to be exercised as you read what follows.

Saturn in Leo tends to detach you from pleasure and leisure and gives you a serious and responsible nature. These are good qualities if Saturn is not badly aspected, even if your inclination for having fun is not particularly increased by this planetary configuration...

A Few Special Points

Your Uniqueness and Your Utopias

You are an original person, sometimes eccentric, even extravagant, and your actions or your words are always surprising. The expression of your humour is out of touch with reality and unpredictable. Most of the times, things are fine and you radiate with a peculiar and very special charm. With you, it is impossible to get bored!

Your will to behave differently from the mass of your fellow men and to assert your independence is part of your pride. Be wary that it does not backfire on you. It would be a pity if excessive unpredictability made you appear as... bizarre!

Your Inspiration and Your Illusions

Your relationship to money is particularly vague. You tend to avoid analyzing your financial resources, as though this topic were neither important nor real. You belong to the category of people who never know how much they have in their bank account and in their purse.

This approach is positive in that, if you have a strong sixth sense, you can get good bargains more easily than other people... It may be some sort of blindfolded fortune, although there are real dangers of losing a lot and of being deceived.

Beware not to overstep legal boundaries, lest someday your carelessness in the financial area gets you into big troubles. It would be a pity if what you earned, thanks to your sixth sense, were taken away from you.

Your Passion and Your Authority

You have an unconscious desire to experience your ordeals to the bitter end, regardless of their consequences for your future.

Your clear-sightedness and your investigative capacity enable you to solve mysteries in a deep and intuitive way. But they may also lead you into conflicts, crises and confrontations with enemies who are ruthless, at least in your opinion; having said this, you precisely have the ability to cope with them and to deeply evolve in the process.

You are predisposed to go through ordeals, on the human plane or in the area of health. The pains thus triggered contribute to transform you more rapidly than the majority of people. Your destiny is certainly to progress forward and, above all, to consider such ordeals as stepping-stones instead of signs of some unhealthy fatality.

The Tradition indicates that you may be prompted to take action in humanitarian causes, all the more so, because your personal ordeals incite you to readily help others, even though this tendency is not at once visible.

Your Isolated Planets

In general, the ten planets of the chart are connected to other planets by major or minor astrological aspects. It is owing to those ties that the planets' energies can manifest in the chart owner's personality and play out within safeguards according to a specific tonality.

It seldom happens that in a natal chart, a planet is totally disconnected from the nine other planets.

Astrologers have observed that when such a case occurs, the person feels the energy of the unaspected planet in quite a singular way, very jerky and powerful at the same time. Thus, for instance, the famed astrologer Jean-Baptiste Morin de Villefranche wrote that "an unaspected planet heralds that something strange or extraordinary will take place regarding the meanings of the house in which the said planet is posited" (source : l'astrologie selon Morin).

Rules for detecting an unaspected planet: among all the testimonies that we have reviewed to this day, based on our experience, we tend to agree with American astrologer Janis Huntley who accepts seven aspects, which involve the zodiacal twelve sections of 30 degrees. The aspects to be considered are the conjunction (0 degree, cooperation or tension), the semi-sextile (30 degrees), the sextile and the trine (60 and 120 degrees respectively, aspects of cooperation), the square and the opposition (90 and 180 degrees respectively, tensed aspects), and the quincunx (150 degrees, slightly tensed). In this detection, the chart's angles are not taken into account.

In any case, it is important to remember that an isolated planet clearly expresses its influence when it is a personal planet. Thus, when the Sun, the Moon, Mercury, Venus, or Mars is isolated, it is certain that the effects described by Jean-Baptiste Morin de Villefranche will become manifest. As for Jupiter, Saturn, Uranus, Neptune, and Pluto, one must be cautious because the volume of cases documented is not yet large enough.

Your chart has no isolated planet, and this particular case does not apply to you.

Annex 1: Your Minor Dominants

The five following dominants are less significant than those described at the beginning of your report. They may not be strongly felt. In some cases, they add several minor details to the analysis of your character, but they are rather for curiosity purposes. It is not necessary to take them into account when you first read your portrait.

Your Planetary Repartitions: Northern, Southern, Eastern and Western Hemispheres

The axis linking the 1st house's cuspid (the Ascendant) to the 7th house's cuspid - the Descendant - divides the zodiac into two bowls, a superior bowl, in the South, and an inferior bowl in the North. Quoting an expression by the famous American astrologer Rudhyar, the Southern part and the Northern part correspond to two functions: "being" and "doing". Other concepts are also associated with this North and South distribution, such as introversion - Northern hemisphere - and extraversion - Southern hemisphere - being or appearances, inner life or external life, reflection or action, dreaming one's life or living one's dreams, the abstract or the concrete, backstage or limelight.

This is not about determination but about personal inclination: thus, some people will be thrown into public life despite a prominent Northern hemisphere. If this happens, however, it will not be due to their will, their taste or their deep nature. Conversely, a prominent Southern hemisphere will not bring about a famous destiny to its owner, even if he tends to turn the spotlight on himself, or if he looks for a more active life. It is a matter of deep nature and natural inclination. Of course, none of the typologies is "superior" to another.

In your birth chart, Tom Brady, the ten main planets are distributed as follows:

Your Northern and Southern Hemispheres



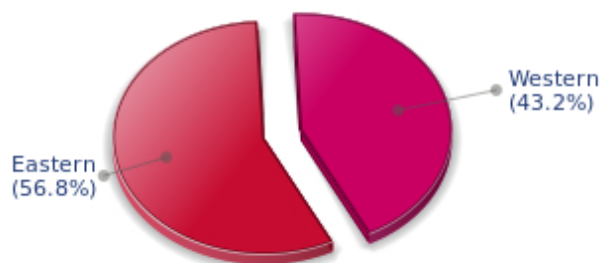
Tom Brady, the predominance of planets in the Southern hemisphere prompts you to take action, to draw attention on yourself, and to make your actions and what you have in mind visible to everyone. Sometimes, without giving a single thought to, and to the detriment of, a richer inner life and a deeper and wiser reflection. Action and communication are inevitable in your opinion, and you tend to think that the only thing that matters is what is seen! This is not always true, and it is up to you to progress through the development of inner qualities such as meditation, solitude and imagination so as to become stronger.

The birth chart is divided into two other parts, Eastern and Western, by the axis linking the Midheaven to the Imum Coeli.

The Eastern part, on the Ascendant side, shows the person's ego, will, magnetism, and vitality, whereas the Western part, on the Descendant side, symbolizes other people, communication, relationships and their influence, as well as flexibility and adaptability.

Tom Brady, here is the planetary repartition in your Eastern and your Western hemispheres:

Your Eastern and Western Hemisphere:

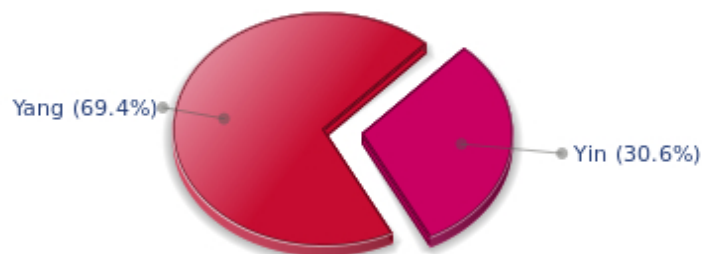


Tom Brady, the East and West sides are well balanced in your chart. This means that you are not too determined or authoritarian, and that you are neither impressionable nor fragile. You are capable of taking decisions, in full awareness, without anyone's help when circumstances so require. However, you have no problem taking your entourage's viewpoints into consideration, with tact and intelligence.

Your Yin and Yang Polarity

The twelve signs are divided into two polarities, called active or passive, or sometimes masculine and feminine, positive and negative, Yang and Yin. This classification corresponds to two quite distinct tonalities, the first one bringing extraversion, action, self-confidence and dynamism, the second one, introversion, reactivity, reflection and caution. None is superior to the other, each group has its own assets and shortcomings. Odd signs - Aries, Gemini, Leo, Libra, Sagittarius and Aquarius - belong to the first group, whereas even signs - Taurus, Cancer, Virgo, Scorpio, Capricorn and Pisces - belong to the second group.

Your Yin and Yang Polarity



According to the disposition and qualities of your planets and angles, you are rather influenced by Yang energy, the active polarity, Tom Brady: more concerned about actions than reflection, you sometimes rush without standing back and without the deepness that is needed. However, your spontaneity prompts you to take fresh starts, even after repeated failures caused by your rashness.

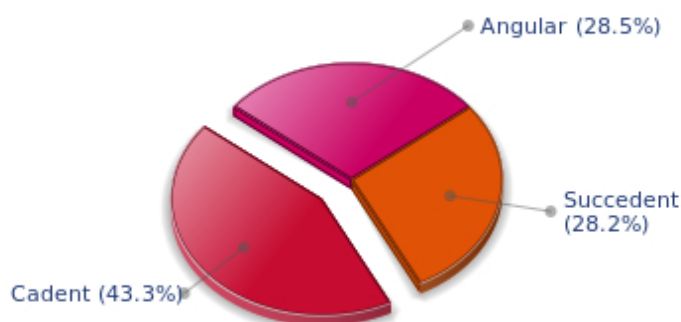
Your Houses' Accentuations

Houses are split up into three groups: angular, succedent and cadent.

The first ones are the most important ones, the most "noticeable" and energetic houses. They are the 1st, 4th, 7th and 10th houses. Their cuspides correspond to four famous angles: Ascendant for the 1st house, Imum Coeli for the 4th house, Descendant, opposite the Ascendant, for the 7th house and Midheaven for the 10th house, opposite the Imum Coeli.

Planets are evaluated according to a whole set of criteria that includes comprehensive Western astrology rules. At their turn, planets emphasize specific types of houses, signs, repartitions etc., as previously explained.

Your Houses' Accentuations



Cadent houses, namely the 3rd, 6th, 9th and 12th houses, are very emphasized in your chart, Tom Brady.

They indicate important potential for communication, adaptability and flexibility. These houses are symbolically linked to the mind and intellect. The relative weakness implied by these characteristics indicates your tendency to hesitate or to be indecisive, but also your remarkable ability to start off again, which is a nice quality, finally: you can easily get yourself out of a tight spot thanks to your mobility and casualness, in the best sense of the term. This group of houses corresponds to evolutionary characteristics of your personality. However, they are only indications and you must include them in the rest of your chart in order to see whether they are validated or not!

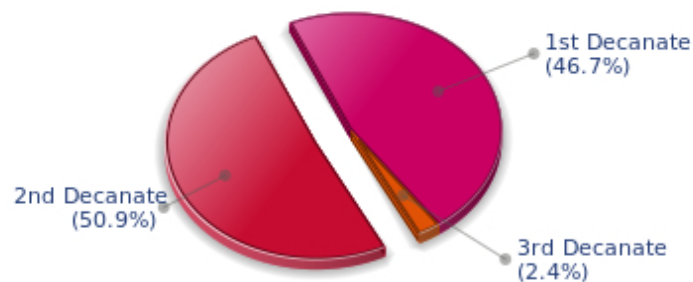
Your Esoteric Decanates

Each sign contains 30 degrees and can be divided into three equal parts: the decanates. The Tradition indicates that specific meanings can be associated to each of the three decanates. Their sphere of activity is usually limited to the Sun sign, however, it is even more interesting to observe the distribution of all the planets in the chart to get an idea of the respective importance of the three decanates, which can complement the description of the personality.

These meanings must be considered with the greatest caution. Indeed, they are minor characteristics that can only underline other outstanding traits of character.

Traditionally, the first decanate highlights the characteristics of the sign where a planet is located. The two other decanates correspond to sub-dominant planets, depending on the nature of each sign. This system leads to a multiplication of meanings and it is impossible to have a clear understanding: here, we prefer to give only the meaning of one decanate in comparison with the other two, within the birth chart as a whole. Again, the greatest caution is needed with regard to this minor indication as it is not always reliable: it is not essential that you read these texts in the beginning. You can get back to them later on, once you have read more important interpretations

Your Esoteric Decanates



The second decanate, which means the part between 10° and 20° of any zodiacal sign, prevails in your natal chart, Tom Brady: these 10 zodiacal degrees emphasize logical thought and mental values. Therefore, you may be drawn to some kind of scientific activities, research, writing or any sort of expression where you have to... think a lot.

Annex 2: Karmic Study

The karmic theme is a good complement to the psychological portrait, or natal chart. This analysis is based on the positions of the Lunar Nodes, the Black Moon and the Part of Fortune: they are also called fictitious points and describe the spiritual purpose of your destiny. Because there is in all of us an experience and a quest, our life is an evolutionary journey... provided that we head towards the right direction, of course! Indian astrologers highly prize the Nodes axis (North Node and South Node). It is the Ariadne's thread that we are invited to follow. The Black Moon indicates the sector where we are most likely to transform or to transcend, whereas the Part of Fortune points out the area where we can easily express our specificity.

The Lunar Nodes: a spiritual path

Lunar Nodes have their roots in the Indian tradition and they are based on a simple concept: each of us have a mission of their own, here on earth, a destiny, a course. According to the Indian philosophy, life is a school: the nodal axis describes our past experiences (South Node, our karma, our spiritual inheritance or our previous lives), and our aims on earth (North Node, our Dharma, the purpose of our current incarnation). This is the reason why the study of the lunar nodes is called "Karmic astrology". Here, we shall not step into hypothetical past lives. Wherever our current trends may come from, all that really matters is that we become aware of the purpose of our life, its finality and our dharma. We are likely to understand our life purpose around the age of 37, when the Lunar Nodes return to their natal position.

During the first part of your life, you manifested an acute sense of challenge, a taste for personal initiatives and an unfailing fighting spirit: these qualities prove helpful in handling any possible setback today. However, you must make an effort to accept your entourage and adopt more open and accommodating attitudes! Life teaches that you must become more sociable and develop the flexible behaviour that you lack. Do not play around with mavericks; It is important that you earn your close friends' affection and that you rely on their collaboration. You slowly become more aware of other people's reasons, of their desires and their concerns. Your destiny may be influenced by relationships. If you had a tendency to provoke people or events, now you have gained complementary qualities: diplomacy and human tact, cleverness in the art of reconciling opposite views. It is true that it required a huge personal effort!

You have obvious sociability qualities. You know better than others how to adjust to a new context and to copy your entourage's behaviour exactly. You do not dissociate yourself from groups or cells (social, family), on the contrary, you frequently adopt flexible attitudes that meet other people's expectations. This may translate into a lack of fighting spirit. You may not dare to go against prevailing fashions and currents. Because you dread unknown situations, you may miss the opportunity to innovate. It is important that you learn to go it alone and to get rid of scruples that hamper your doings: life encourages you to leave aside other people's opinions and, as time goes by, to find your autonomy of thought and action. While keeping your sociable nature, it is important that you develop a sense of individual initiative. In many situations, one can only rely on oneself. In such cases, you have the possibility to achieve the freedom many people dream of, without really giving themselves the means to implement it. Do not allow your entourage to dictate your way of life, over and over again. However, do not fall into the opposite excess: the frenzied individualism of those who value nothing except their own interest! Your life's purpose may be to master your destiny.

Lilith or the Dark Moon

The Black Moon is the spark of refusal and distance that is dormant in all of us. Depending on the sign where she is found in your chart, she highlights the desire to transform and to sublimate a part of your life. The Black Moon is unfathomable and mysterious. She gives a different dimension to the sector she touches. Her manifestations are subtle; nonetheless, she is powerful, implacable, demanding to the extreme... The Black Moon is also called Lilith. She is the inner flame of your heroism and insubordination.

Twin relations (those that include your fellow creature, your double) are an object of fascination. You are in quest of your soul mate, your identical being rather than your complement... This attitude brings about exaltations and setbacks: you think that you recognize that special one who really resembles you? Differences, however, grow more painfully as time unfolds. But your search of an absolute relation may also become the cement of a close and privileged couple, impervious to life vagaries.

The notion of freedom takes a special meaning: to be free does not only mean being able to move as you please here and there, nor does it mean having a few hours of leisure available. Above all, it means being able to lead a spiritual quest, to access a different dimension in life: to encounter, to travel, to love and to never be hampered by contingencies, never be slowed down by daily life. That'll take some doing! The comfortable routine of the contemporary world, in this regard, puts you off.

The Part of Fortune in House

The Part of Fortune is a very ancient fictitious point that depends on the lunar phase at the time of birth. The astrological house tenanted is particularly strengthened. In your chart, the Part of Fortune is in the 8th house: you need to constantly transform your life, to evolve and to shed your skin. You do not hesitate to regularly question the basis of your manner. Everything is death and revival and the wheel of life is ruthless: what was still yours yesterday will be a mere souvenir tomorrow... Your wealth is the know-how you demonstrate when you cope with changes imposed by events, while always remaining true to yourself.

Retrograde Planets

The karmic tradition insists on the issues related to the so-called retrograde planets. They are considered to be the inheritance of a past that was not well experienced, a sort of unfinished business. The interpretations of the retrogradation may seem negative or excessive to you. However, you may relate to a scenario that you have often and repeatedly experienced... as if you underwent several setbacks that all have the same cause. Until the day you become aware of it and you can free yourself from it! Through the slow integration of these planetary energies, you will be able to overcome your difficulties and to pay your karmic debt. Actually, each retrograde planet highlights an opportunity for evolution. Nothing can be achieved without the will to grow spiritually and to defeat your own demons.

Neptune retrograding concerns spirituality. You may have expressed early in life a few reluctances about the subtle world of faith. You may have ignored destiny's signs and winks and you preferred to stick to your certainties, to a rigorous and objective control of your life. You dread your own aspirations and you readily trust others': this causes a lack of autonomy and the feeling that you may not receive as much as you give. However, several delusions teach you that you must relativize your calculating and methodical attitude and open up to the irrationality of love in order to find an inner and more spiritual progression. Embracing the invisible is a process that unfolds as years and experiences go by. Your own generosity

increases as you become aware of your entourage's generosity.

N.B: modern astrology attaches less and less importance to the principles of retrograding planets.

Conclusion

A few remarks are needed here in order to allow you to fully take advantage of your astrological portrait: firstly, do not forget that a birth chart is also a photograph of the sky at birth and a structure that not only contains the personality's characteristics, but also its potential evolution.

We all know that, in real life, people begin to know themselves when they are in their forties, or even later. Likewise, several traits of character in a portrait may seem surprising: in most cases, it means that such features are not yet developed.

Some personalities reveal themselves late in life, whereas others are more precocious. It must be remembered that psychological structures are in a state of continuous evolution because they are influenced by unfolding events and gradual maturity. We can never underline strongly enough the "mobile" nature of the personality, throughout a lifetime.

On the other hand, it is difficult to discriminate what is "already present" at this moment in your life when you are reading your chart's interpretation, from what will appear later in the logic of your evolution: you must sort out all the pieces of information provided and, in most cases, you will see that your astrological portrait is helpful for your endeavours to know yourself better.

Finally, several readings of an astrological portrait are usually necessary in order to absorb all its different meanings and to evaluate the relevance of each character trait.

In any case, better self-knowledge obviously contributes to faster personal blossoming, and it is undoubtedly one of astrology's major roles: contributing to know oneself better, in order to improve more rapidly, to deal with one's weaknesses and to avoid its drawbacks, and to take advantage of one's assets as efficiently as possible.
