



Tina Turner's Astrological Portrait





Tina Turner's Astrological Portrait



Introduction	2
Your Planets, Houses, Aspects, and Natal Chart	4
Preamble	6
Your Planetary Repartitions	7
Your Dominant Modes and Elements	8
Your Dominants: Planets, Signs and Houses	9
Your Style, Behaviour, and Peculiarities	13
Your Sensitivity	17
Your Affectivity	18
The Way You Take Action and Your Sexuality	19
Your Intellect and Your Communication Style	20
Your Goals, Motivations, Career, and Destiny	22
Your Assets and Your Part of Joviality	24
Your Serious Side	24
A Few Special Points	25
Your Isolated Planets	26
Annex 1: Your Minor Dominants	28
Annex 2: Karmic Study	32
Conclusion	35





Tina Turner's Astrological Portrait

Introduction

To fully benefit from this portrait, we suggest that you read its introduction and its preamble carefully, and then that to take the time to soak up the interpretations of each chapter. Given the large number of texts, which mirrors the human being's complexity, you may need to go through the contents several times, so as to get a good grasp of their meaning and to know yourself better. This will reward your patience.

The purpose of this report is to describe your psychological portrait and to highlight the most fundamental features on the personal area. The report begins with the analysis of your planetary dominants and outlines your personality's general traits before going into further detail. Minor dominants are analysed at the end of Annex 1, for purposes of clarity. Your report then delineates the various facets of your personality:

In general, even when relationships are not involved, we express ourselves and we feel according to our character and our personal motivations: this is indicated by the Ascendant and the Sun sign which both give details on the way we function. They shed a tremendously important light which allows to figure out your personality. Here, we describe your Sun sign (your inner self), your Ascendant (your behaviour as seen by others), and the ruler of the Ascendant (interesting additional pieces of information about the style of your personality). These descriptions alone cover nearly a third or a half of your psychological signature, depending on your natal chart characteristics.

Then, we address your sensitivity, or in other words, the way you receive things and how you express your emotions ; it works as a constant filter for all your exchanges, even when it becomes a more secondary element in your amorous relationship, because at that moment, affectivity prevails. Sensitivity is the way you perceive things, it is your radar, your daily mood, and at the same time, it indicates how you react to your entourage, on a daily basis. It is what others immediately see of you. In the second paragraph, we explain in which areas of life your sensitivity and your emotions are strongest, therefore, where you are most vulnerable.

After this, it is your affectivity, the way you love and how you charm, that comes into play as soon as you fall in love: the first part indicates its basic structure or its main form. The second part describes the areas where it is best expressed and how you display it, according to your personality.

A third fundamental area deals with your mode of action and your sexuality: how you behave, how you manage to obtain what you want, what kind of desires you have. There are twelve possibilities, very

different from one another. The study discloses the specific one that applies to you. In the second paragraph, we explain in which life areas you may most efficiently take advantage of your capacity for action and for conquest.

Your ways of communicating and of thinking are obviously among the major elements that must be integrated into the delineation and the description of your personality. Indeed, they influence your general behaviour and may modify or enhance the image your project (for instance, extraversion may “compensate” a weak affectivity, but a huge number of cases are possible). An additional chapter indicates the favourite areas where you enjoy communicating, thinking and meeting with people.

Besides, we analyze an even more personal aspect that is important to define and understand what may occur within your couple: each of us have a centre of interest, a privileged manner to be fulfilled or to achieve our destiny; this main motivation is indicated by the positions of your Sun and your chart ruler in the astrological houses and we provide you with its detailed description.

A natal chart contains the potential for specific fulfilment and a whole range of assets, protections and qualities. How does the lucky factor manifest in your personality? In which area can you best exploit your qualities? The answers are precisely revealed to you in this chapter.

On the other hand, we all feel in us a part of vulnerability, doubts and fears. How does this part of solemnity or serious side play out? How is it possible to handle it in order to evolve and to get rid of useless elements? All this information is provided to you in these two paragraphs.

Then, you can discover three additional traits of your personality that must be considered as secondary ones. They deal with your predispositions, which means that they need to be triggered by external events because they are not influenced by your will; let's call it a part of fate. Please, bear in mind that your destiny can unfold only in accordance with what you are: therefore, even if they belong to your more unconscious self, these characteristics are parts of you, definitely.

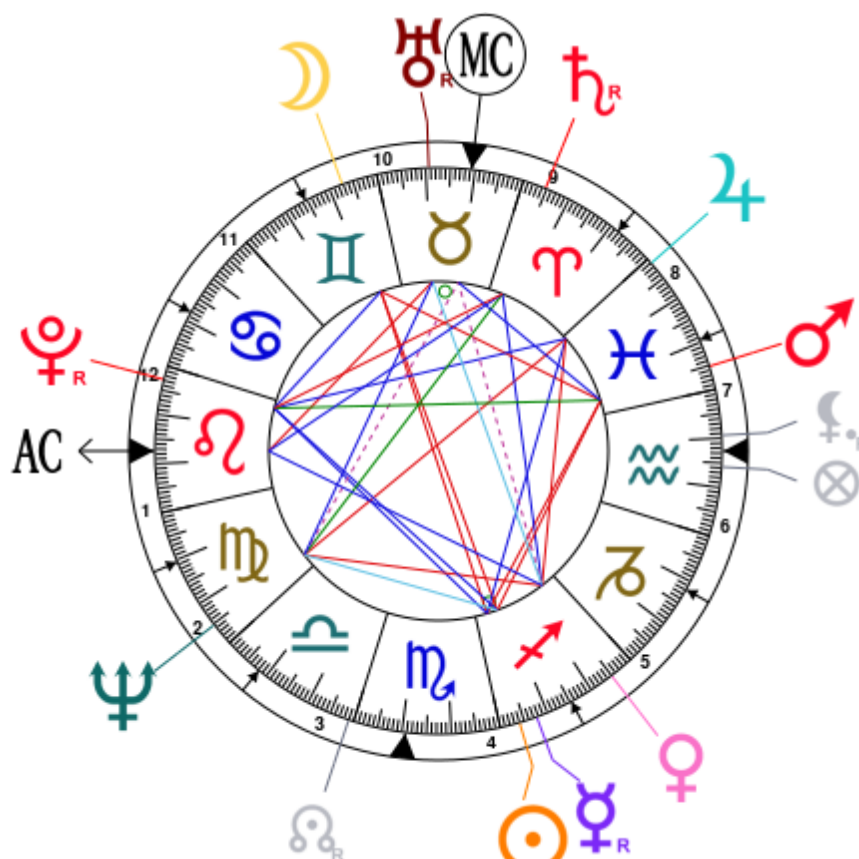
The karmic chart complements the psychological portrait or natal chart. It is based on the positions of the Lunar Nodes, the Black Moon, and the Part of Fortune. These elements of the chart, sometimes referred to as fictitious points, provide information about the spiritual meaning of your destiny. Owing to the fact that we all have in us acquired knowledge and the urge to go on a quest, our life is an evolutionary journey... However, these texts must be read with great caution: this is the reason why you will find this analysis in the Annex 2 of your report.

Your Planets, Houses, Aspects, and Natal Chart

Tina Turner, born November 26, 1939, at 10:10 PM, Nutbush (Haywood), Tennessee [89.24W ; 35.41N ; 6W00]

Natal Planets				In House	Natal Houses (Placidus)		
☉ Sun	4°01'	♐ Sagittarius		House 4	House 1	17°25'	♌ Leo
☾ Moon	7°14'	♊ Gemini		House 10	House 2	10°28'	♍ Virgo
☿ Mercury	7°40' R	♐ Sagittarius		House 4	House 3	8°10'	♎ Libra
♀ Venus	24°59'	♐ Sagittarius		House 5	House 4	10°42'	♏ Scorpio
♂ Mars	4°48'	♏ Pisces		House 7	House 5	15°20'	♐ Sagittarius
♃ Jupiter	28°53'	♏ Pisces		House 8	House 6	18°08'	♑ Capricorn
♄ Saturn	25°16' R	♈ Aries		House 9	House 7	17°25'	♒ Aquarius
♅ Uranus	19°23' R	♉ Taurus		House 10	House 8	10°28'	♏ Pisces
♆ Neptune	25°14'	♍ Virgo		House 2	House 9	8°10'	♈ Aries
♇ Pluto	2°48' R	♌ Leo		House 12	House 10	10°42'	♉ Taurus
♊ Node	28°58' R	♎ Libra		House 3	House 11	15°20'	♊ Gemini
♎ Lilith	20°36' R	♒ Aquarius		House 7	House 12	18°08'	♋ Cancer
AS AS	17°25'	♌ Leo					
MC MC	10°42'	♉ Taurus					

In keeping with the common practice, we consider that a planet posited within 1 degree of the next house belongs to that house. We allow an orb of 2 degrees for the ASC and the MC.



List of Your Active Planetary Aspects

Please find below the list of all the active inter-aspects which are interpreted in this report, in addition to your planets in sign, in house, and all your planetary dominants. Since the aspects between slow-moving planets are of a collective nature, they are not displayed, in compliance with our interpretation rules.

- ★★★★★ Sun opposite Moon, orb -3° 13'
- ★★★★★ Sun conjunction Mercury, orb 3° 39'
- ★★★★★ Sun square Mars, orb 0° 47'
- ★★★★★ Sun trine Jupiter, orb -5° 07'
- ★★★★★ Sun trine Pluto, orb 1° 12'
- ★★★★★ Moon opposite Mercury, orb -0° 25'
- ★★★★★ Moon square Mars, orb 2° 26'
- ★★★★★ Moon sextile Pluto, orb -4° 26'
- ★★★★★ Mercury square Mars, orb -2° 52'
- ★★★★★ Mercury quintile Neptune, orb 0° 25'
- ★★★★★ Mercury trine Pluto, orb 4° 52'
- ★★★★★ Venus square Jupiter, orb 3° 54'
- ★★★★★ Venus trine Saturn, orb 0° 17'
- ★★★★★ Venus bi-quintile Uranus, orb 0° 24'
- ★★★★★ Venus square Neptune, orb -0° 15'
- ★★★★★ Venus trine Ascendant, orb 7° 33'
- ★★★★★ Venus sesqui-quadrant Midheaven, orb 0° 43'
- ★★★★★ Mars inconjunction Pluto, orb -1° 59'
- ★★★★★ Mars sextile Midheaven, orb 5° 53'
- ★★★★★ Saturn trine Ascendant, orb -7° 5'
- ★★★★★ Uranus square Ascendant, orb -1° 58'
- ★★★★★ Uranus conjunction Midheaven, orb 8° 41'
- ★★★★★ Neptune sesqui-quadrant Midheaven, orb -0° 27'

Meaning of Stars

Stars indicate the strength of the aspects. Two solid coloured stars (there are half-stars also), mean that the aspect is powerful enough to be noticed at the first reading.

We strongly advise that you read the paragraphs displaying less than two stars later on, after you have absorbed the full import of the other texts.

The yellow colour indicates a soothing and conciliating aspect, and the red colour, a dynamic and tense aspect. The red aspects enable you to evolve, to take action, and to learn to turn your "weaknesses" into assets through your life experiences. The yellow aspects are innate strengths on which you rely in order to grow better with the former...

Preamble

When interpreting a natal chart, the best method is to start gradually from general features to specific ones. Thus, there is usually a plan to be followed, from the overall analysis of the chart and its structure, to the description of its different character traits.

In the first part, an overall analysis of the chart enables us to figure out the personality's main features and to emphasize several points that are confirmed or not in the detailed analysis: in any case, those general traits are taken into account. Human personality is an infinitely intricate entity and describing it is a complex task. Claiming to rapidly summarize it is illusory, although it does not mean that it is an impossible challenge. It is essential to read a natal chart several times in order to absorb all its different meanings and to grasp all this complexity. But the exercise is worthwhile.

In brief, a natal chart is composed of ten planets: two luminaries, the Sun and the Moon, three fast-moving or individual planets, Mercury, Venus and Mars, two slow-moving planets, Jupiter and Saturn, and three very slow-moving planets, Uranus, Neptune and Pluto. Additional secondary elements are: the Lunar Nodes, the Dark Moon or Lilith, Chiron and other minor objects. They are all posited on the Zodiac wheel consisting of twelve signs, from Aries to Pisces, and divided into twelve astrological houses.

The first step is to evaluate the importance of each planet. This is what we call identifying the dominant planets. This process obeys rules that depend on the astrologer's sensitivity and experience but it also has precise and steady bases: thus, we can take into account the parameters of a planet's activity (the number of active aspects a planet forms, the importance of each aspect according to its nature and its exactness), angularity parameters; (proximity to the four angles, Ascendant, Midheaven, Descendant and Imum Coeli or Nadir, all of them being evaluated numerically, according to the kind of angle and the planet-angle distance) and quality parameters (rulership, exaltation, exile and fall). Finally, other criteria such as the rulership of the Ascendant and the Midheaven etc. are important.

These different criteria allow a planet to be highlighted and lead to useful conclusions when interpreting the chart.

The overall chart analysis begins with the observation of three sorts of planetary distributions in the chart: Eastern or Western hemisphere, Northern or Southern hemisphere, and quadrants (North-eastern, North-western, South-eastern and South-western). These three distributions give a general tone in terms of introversion and extraversion, willpower, sociability, and behavioural predispositions.

Then, there are three additional distributions: elements (called triplicity since there are three groups of signs for each one) - Fire, Air, Earth and Water - corresponding to a character typology, modality (or quadruplicity with four groups of signs for each one) - Cardinal, Fixed and Mutable - and polarity (Yin and Yang).

There are three types of dominants: dominant planets, dominant signs and dominant houses. The novice thinks astrology means only "to be Aries" or sometimes, for example, "to be Aries Ascendant Virgo". It is actually far more complex. Although the Sun and the Ascendant alone may reveal a large part of the character - approximately a third or a half of your psychological signature, a person is neither "just the Sun" (called the sign) nor just "the first house" (the Ascendant). Thus, a particular planet's influence

may be significantly increased; a particular sign or house may contain a group of planets that will bring nuances and sometimes weaken the role of the Ascendant, of the Sun sign etc.

Lastly, there are two other criteria: accentuations (angular, succedent and cadent) which are a classification of astrological houses and types of decanates that are occupied (each sign is divided into three decanates of ten degrees each). They provide some additional informations.

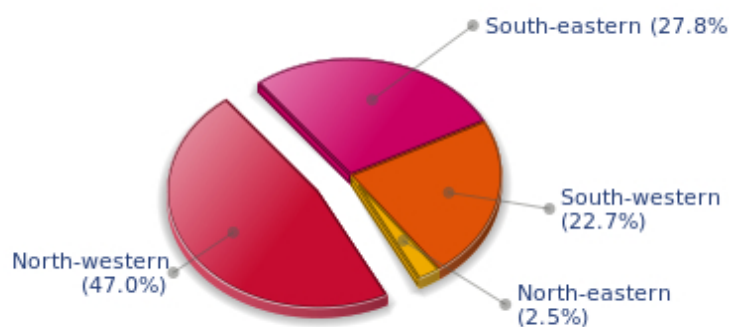
These general character traits must not be taken literally; they are, somehow, preparing for the chart reading. They allow to understand the second part of the analysis, which is more detailed and precise. It focuses on every area of the personality and provides a synthesis of all the above-mentioned parameters according to sound hierarchical rules.

As explained in the introduction of your Psychological Portrait report, minor dominants are analysed at the end of Annex 1, for purposes of clarity.

Your Planetary Repartitions

Each quadrant is a combination of the four hemispheres of your birth chart and relates to a character typology. The Southern hemisphere – the top of your chart, around the Midheaven – is associated with extraversion, action, and public life, whereas the Northern hemisphere prompts to introversion, reflexion, and private life. The Eastern hemisphere – the left part, around the Ascendant – is linked to your ego and your willpower, whereas the Western hemisphere indicates how other people influence you, and how flexible you are when you make a decision.

Your Four Quadrants

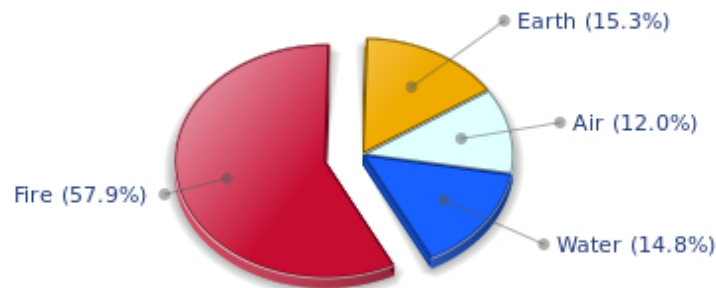


Tina Turner, the nocturnal North-western quadrant, consisting of the 4th, 5th and 6th houses, prevails in your chart: this sector favours creativity, conception and some sort of specialization or training, with helpfulness and relations as strong components. You need others' cooperation in order to work properly, although you are not very expansive: creating, innovating and thinking are what matter most to you because this self-expression enriches you and totally satisfies you.

Your Dominant Modes and Elements

Tina Turner, here are the graphs of your Elements and Modes, based on planets' position and angles in the twelve signs:

Your Four Elements



Tina Turner, Fire is dominant in your natal chart and endows you with intuition, energy, courage, self-confidence, and enthusiasm! You are inclined to be passionate, you assert your willpower, you move forward, and come hell or high water, you achieve your dreams and your goals. The relative weakness of this element is the difficulty to step back or a kind of boldness that may prompt you to do foolish things.

Like the majority of Earth signs, Tina Turner, you are efficient, concrete and not too emotional. What matters to you is what you see: you judge the tree by its fruits. Your ideas keep changing, words disappear, but actions and their consequences are visible and remain. Express your sensitivity, even if it means revealing your vulnerability. Emotions, energy and communication must not be neglected; concrete action is meaningless if it is not justified by your heart, your intellect or your enthusiasm.

The twelve zodiacal signs are split up into three groups or modes, called quadruplicities, a learned word meaning only that these three groups include four signs. The Cardinal, Fixed and Mutable modes are more or less represented in your natal chart, depending on planets' positions and importance, and on angles in the twelve signs.

Your Modes



The Mutable mode is the most emphasized one in your natal chart, Tina Turner, which indicates a mobile character that is curious and thirsty for new experiences and evolution. You are lively and flexible, and you like to react quickly to solicitations, but don't confuse mobility with agitation, since this is the danger with this configuration - and with you, stagnation is out of the question. Security doesn't matter as long as you are not bored. You optimize, you change things, you change yourself... all this in a speedy way.

Your Dominants: Planets, Signs and Houses

The issue of dominant planets has existed since the mists of time in astrology: how nice it would be if a person could be described with a few words and one or several planets that would represent their character, without having to analyse such elements as rulerships, angularities, houses, etc!

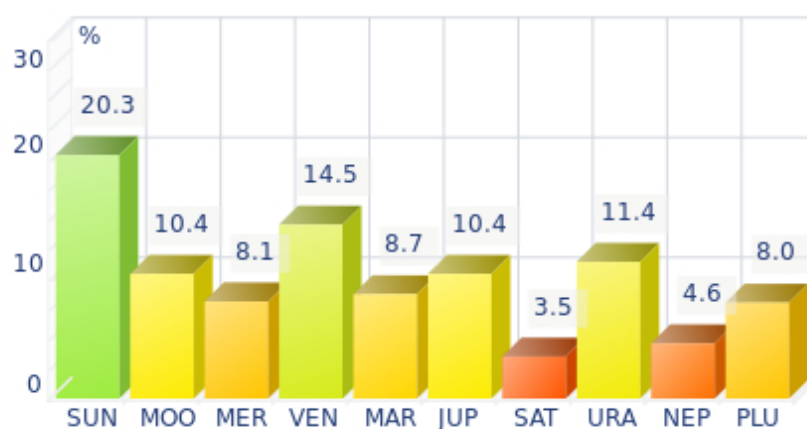
The ten planets - the Sun throughout Pluto - are a bit like ten characters in a role-play, each one has its own personality, its own way of acting, its own strengths and weaknesses. They actually represent a classification into ten distinct personalities, and astrologers have always tried to associate one or several dominant planets to a natal chart as well as dominant signs and houses.

Indeed, it is quite the same situation with signs and houses. If planets symbolize characters, signs represent hues - the mental, emotional and physical structures of an individual. The sign in which a planet is posited is like a character whose features are modified according to the place where he lives. In a chart, there are usually one, two or three highlighted signs that allow to rapidly describe its owner.

Regarding astrological houses, the principle is even simpler: the twelve houses correspond to twelve fields of life, and planets tenanted any given house increase that house's importance and highlight all relevant life departments: it may be marriage, work, friendship etc.

Tina Turner, here is the evaluation diagramme for your planets:

Your Dominant Planets



The three planets that are most highlighted in your chart are the Sun, Venus and Uranus.

One of the dominant planets in your birth chart is the Sun. He symbolizes will, magnetism, sense of honour and dignity. You are a Solar being, and you often display charismatic and leadership qualities. Your warmth and your persuasive power lead you far away from pettiness. You enjoy thinking big and, consequently, you move forward according to what you decide.

Your Solarian weakness may be related to the sin of pride or to excessive authority. The frontier between pride and vanity is tenuous: be careful not to overstep it and to keep the nobleness of heart that is part of your charm.

With Venus among your dominant planets, one of your first reflexes is... to please! Your look, your charm, and your seduction are omnipresent elements in your behaviour.

Your approach to things is connected to your heart, and for you, no real communication can flow if your interlocutors exude no sympathy or warmth. Cold and logical reasoning, clear thoughts and good sense are not important to you: if there is no affective bond with your environment, no connection can be established with the Venusian that you are, and nothing happens.

You have a strong artistic side, and you never neglect subjective but clear concepts such as pleasure, beauty, and also sensuality. However, sometimes to the detriment of efficiency, durability, logic, and... detachment.

Uranus among your dominant planets: just like Neptune and Pluto, Uranian typology is less clearly defined than the so-called classical seven planets that are visible to the naked eye, from the Sun to Saturn. However, it is possible to associate your Uranian nature with a few clear characteristics: Uranus rhymes with independence, freedom, originality, or even rebelliousness and marginality, when things go wrong...

Uranus is Mercury's higher octave and as such, he borrows some of its traits of character; namely, a tendency to intellectualize situations and emotions with affective detachment, or at least jagged affectivity.

Therefore, you are certainly a passionate woman who is on the lookout for any kind of action or revolutionary idea, and you are keen on new things. Uranians are never predictable, and it is especially when they are believed to be stable and well settled that... they change everything - their life, partner, and job! In fact, you are allergic to any kind of routine, although avoiding it must give way to many risks.

Your Dominant Signs



In your natal chart, the three most important signs, delineated according to the above-mentioned criteria, are, in decreasing order of strength, Sagittarius, Leo and Pisces. They are often prominent because your Ascendant and your Sun are posited there. However, it is not always the case: it may be because they are occupied by a cluster of planets, by a planet near an angle other than the Midheaven and the Ascendant, or because two or three planets are very active and form numerous aspects from these signs. Therefore, you partly take on the three signs' characteristics, which are somehow superimposed on your natal chart, and all the more so if any of the signs in question is highlighted.

Sagittarius, an adventurous and conquering fire sign, is dominant in your chart: you are enthusiastic, enterprising, optimistic, very sociable, and mobile - you have itchy feet both physically and mentally. Nobody gets bored with you because you are always planning things and suggesting excursions, at least... when you are around and not already gone on a trip! Obviously, so many movements for one woman may scare people off, and some of them may even criticize your brutality or your tendency to lose your temper, but you are so warm and genuine, so expansive, isn't this a good thing? And all the more so, since your sense of humour is overwhelming...

With Leo as a dominant sign, you naturally shine brightly. Your dignity, your sense of honour, and your generosity can almost turn you into a solar mythological hero, a knight or a lord from the ancient times. People may blame you for your selfishness, your pride or your somewhat loud authority, but if you are self-confident, kind-hearted and strong-willed, it surely makes up for your little flaws, as long as they remain moderate...

Pisces is among your dominant signs and endows your personality with unlimited sources of emotions, dreams, imagination, and sensitivity, to the extent that you literally swim in a cloudy ocean of delightful impressions. These impressions are so intense and overwhelming that you don't really need to take action concretely, to show your dynamism or your willpower, since you already live so intensely with your feelings - you are as keen as a radar, always on the alert! That is why some people may not like your carelessness, and the lack of clarity in your opinions or actions; however they quickly notice your artistic

talents, your poetic or artistic side, and your total lack of wickedness. Besides, you feel compassion for people in pain - empathy is one of your great qualities. Thanks to your flexibility, your intuition, and your generosity, you may spend an important part of your life helping others. And if you are creative or if you have well-known artistic talents, everybody will forgive your little flaws: absent-mindedness, lack of energy or of will, too dreamy temperament...

Your Dominant Houses



Houses 4, 10 and 5 are the most tenanted ones in your natal chart. To compute their strength, planets and angles are weighed according to various astrological criteria such as swiftness, activity, angularity, rulership etc. From the analysis of the most tenanted Houses, the Astrologer deduces the fields of activity that are most relevant to you, be it because of what you are experiencing, or what you may experience in the future, or because of your deep inner motivations.

With an important 4th house in your chart, your private life, your intimacy, as well as your family and home, play a fundamental role. Your security and your family unit, the one you come from, but also the one you set up when you get married and start a family - or even as a girl bachelor living alone in your sweet home - are necessary for you to blossom. According to the Tradition, your father may play an important role in your life.

With a prominent 10th house, your destiny's achievement may be very notable: the 10th house represents your career, your public life, and your ambitions. A good deal of your energy may thus be used to successfully implement what you have in mind. Instinctively, you are very keen to make your dreams come true. Sooner or later, you will deal with the public, and your personal achievement will go through trials and ordeals: other people and visible actions.

The 5th house is one of your dominant houses: hobbies, love life, sports, and games, including speculation and all kinds of entertainment, are fields that you actually take seriously! On a more subtle level, artistic creation as well as other forms of creation - including begetting children - could be one of your assets. You gain from taking part in leisure associations and various activity clubs in which a catchword resounds more than for most people: pleasure.

Your Style, Behaviour, and Peculiarities

What is commonly known as "sign" indicates the position of the Sun in the Zodiac. The Sun highlights all the characteristics of the sign he tenants. According to astrology traditional rules, these characteristics are all the more pure and exact when the Sun is strong in the sign, or when the sign is particularly highlighted within the chart. Here, we indicate the pure characteristics of the sign but you must bear in mind that they may only shed a light on a particular aspect of your personality. Indeed, the sole sign of the Sun, or of the Ascendant, can never describe an astrological chart because it depends on the degree of strength of the said sign in your chart.

Another important point must be underlined. Contrary to the Ascendant, which clearly describes your appearance, your vitality, your physical constitution, your spontaneous behaviour and the image you project, your Sun sign describes your inner self, which you may not completely be aware of, and which may emerge gradually as you mature: it is about your inner personality that you reveal only to the members of your entourage whom you trust. The Sun sign is likely to be the final form of your personality, once it has evolved in line with the energies of the other parts of your chart, the beginning of which is seen in the Ascendant, your external "bark".

The Ascendant is one of the major components of your natal chart. It is the zodiacal sign that rises in the East at the very moment of your birth. To calculate it, it is therefore necessary to know your exact time of birth.

It provides with a wealth of information on your personality. It is one of the key features that allows the analysis of several parts of you, such as your appearance, your character as it is initially perceived and your immediate behaviour. It describes the external aspect of your personality which you always display, but it also describes your physical constitution in the long-term, in other words, your health.

Please be aware that, in spite of the importance of the Ascendant, the accuracy of its description depends on how strongly highlighted it is in your natal chart. We use the entire set of astrological rules to assess the strength of the Ascendant. In most cases, the Ascendant is as revealing as your "sign", i.e., the sign where the Sun is posited at the time of birth.

You were born under the sign of Sagittarius and your Ascendant is in Leo

Before broaching the details of the meaning of your Sun and your Ascendant, as a preamble, we offer a brief generic interpretation of their combination in your chart:

How resplendent! These two Fire signs infuse your personality with energy and audacity. You are pompous but warm, you usually wear a large smile, and you do not hesitate to face the world. You may not be careful or discreet enough, and you sometimes scare away the shyer people whom you tend to ignore or underestimate. However, Leo is more tenacious and individualistic than Sagittarius, which can be a quality and enables you to project the image of a self-controlled and assertive person. You enjoy showing a proud and magnanimous face, and you are easily moved by compliments. Nevertheless, your Sagittarius Sun, which defines your inner self, prefers to remain flexible and open to other opinions. Indeed, only your friends and relatives know your less obvious facet which is marked by idealism and a strong interest in exoticism. Sagittarius usually wants to excel itself, discover new horizons so as to

endlessly evolve and amass as much knowledge as possible, sometimes to the extent that it spreads itself too thin. Hopefully, Leo will see to it that you do not get lost “elsewhere” and will help you remain the person you really are.

You were born with the Sun in Sagittarius

Psychologically speaking, your nature is extroverted and independent, oriented towards expansion and sociability. You have the soul of a leader, energetic and active. Your charisma and your drive are fully integrated into the collective life. Indeed, as an action-oriented fire sign, you challenge yourself and you succeed in accomplishing the task straight away. Sagittarius is hard to follow because his spirit and his independent mind constantly prompt him to go further and higher.

As you are born under this sign, you are charismatic, fiery, energetic, likeable, benevolent, tidy, jovial, optimistic, extroverted, amusing, straightforward, demonstrative, charming, independent, adventurous, straightforward, bold, exuberant, freedom-loving. But you may also be irascible, selfish, authoritarian, inconsistent, unfaithful, brutal, unreliable, reckless, tactless or unpleasant.

In love, Madam, you are a whirlwind made of life and warmth. You are mobile, cheerful, extroverted, always feeling comfortable and dynamic, a freedom-lover who appreciates variety. Had you not been so sane and so benevolent, you would have been mistaken for an Amazon of the mythological era.

You are pleasant to deal with, as long as your partner accepts your desire to constantly move. You are not fussy, you are lively, with numerous centres of interest. You often take the initiative in your amorous encounters that are likely to take place during your holidays or business trips. With you, no tragedies, no complication no questioning! You fully enjoy the present moment when you are around, unless you are already in your plane, flying towards new adventures...

Once you calm down, you will be a wonderful wife and mother. You will set up a home and start a family where your husband and your children will move with you as often as possible during school holidays. You may also move into a different city or a different country, because of professional changes.

Because Sagittarius is a dual sign, it may happen that you marry more than once, if your needs for freedom and mobility, which are so important to you, are not fully met.

Your Ascendant is in Leo

Psychologically speaking, your nature is powerful and self-assured. You are a leader whose strength and nobleness naturally arouse your entourage's respect and adherence and your legitimacy is unquestioned. Your sense of commandment, the honour your person constantly exudes, your prestige and your charisma is a whole which puts you into the spotlight wherever you go.

As you are born under this sign, you are proud, determined, wilful, loyal, solemn, generous, ambitious, courageous, heroic, full of vitality, creative, confident, seductive, happy, daring, proud, majestic, honest, magnanimous, charismatic, responsible, noble, brilliant, radiant, dramatic, affectionate, full of humour, demonstrative, swaggering and self-confident. You can also be domineering, conceited, touchy, authoritarian, stubborn, intolerant, self-centered, irascible, violent, and nonchalant

In love, Madam, you are so proud and you have so much self-confidence that, at the beginning, you will

probably need some time to find the partner whom you deem worthy of you.

You shine and you need to be told so; more often than not, your partner, too, must shine... Pre-requisites seem to abound. However, as you mature, you will understand that all that glitters is not gold and that gold may be even more solid when it is less apparent. Then, you will reach higher levels of harmony with your partner.

Your weakness probably lies in your sensitivity to splits, a sort of major ordeal you will not be able to overcome rapidly.

You are a charming partner, with a lot of humour. You are brilliant, bubbling and you receive your guests wonderfully well, all the more so if they belong to your world. Your children will be particularly important to you and they will immensely contribute to your happiness.

The ruler of your chart is in Sagittarius

The ruler of the Ascendant, also referred to as the chart ruler, brings a few interesting nuances to the meanings provided by the Sun and the Ascendant. The sign in which the ruler of the Ascendant is posited fine-tunes the style of personality described by the Sun and the Ascendant. It may strengthen it if the sign is identical to either of them.

In your chart, the ruler of the Ascendant is the Sun. This specific feature means that the Sun's characteristics previously delineated are strengthened.

Aspects to your Ascendant

Several planets form an aspect with your Ascendant, Tina Turner. Therefore, in their specific way, they modify your behaviour and your personality, which do not take on the pure characteristics of your Leo Ascendant only, but which are a blend of its characteristics with those of the said aspects.

★★★★★ Uranus square Ascendant, orb -1° 58'

This dissonance of Uranus with your Ascendant endows you with a rebellious, original, and unpredictable side, which gives your behaviour a note of dynamism and nonconformism. Of course, other people are sometimes deeply disconcerted by your attitude which does not fit classical or social standards, and you may suffer its consequences, meaning that you feel misunderstood, incorrectly perceived, and considered as a disturbing free electron, or an untrustworthy person. You must remain true to yourself, but at the same time, you must exercise some caution in order not to fall prey to unpleasant misunderstandings.

★★★★★ Venus trine Ascendant, orb 7° 33'

Thanks to Venus, Tina Turner, your behaviour is in harmony with your affective life, and you need not make any special effort in order to express your feelings in a natural way and without arousing people's criticisms. This asset enhances your natural easiness and charm, which is definitely not unpleasant!

★★★★★ Saturn trine Ascendant, orb -7° 5'

Saturn is in soft aspect with your Ascendant, Tina Turner. This harmonious configuration brings about a responsible, loyal, persevering, and patient behaviour, and in a word, reliable. Your seriousness is appreciated, and owing to your capacity to easily analyse situations, you come across as a sincere and

trustworthy person.

Your Sensitivity

Tina Turner, you tend to hold emotions at bay, as if they were dangerous. You observe with curiosity what is occurring and you strive to objectively, logically and impersonally analyze facts in order to form correct judgments. Contacts and communication are very important to you, Tina Turner, you make use of, even over-use, words, with deep humour because it is an additional way for you to be detached from your feelings. You may come across as superficial because you keep on talking without committing yourself. You need to be constantly on the move, to discover and to communicate in order to avoid boredom. When you are alone, you can spend lots of time with books to nourish your mind that is so avid for knowledge. However, be careful not to miss feelings because you favour intellectual sensations...

Your career or professional achievements, Tina Turner, are fields where your emotions will be more easily channelled. You are often popular, especially with women, and you instinctively have the desire to please audiences or crowds.

Your fame is often due to your changeable side, light-hearted, emotional and moody sometimes. It also means that it is very likely that you experience professional changes several times during your life. Each time, you will contrive to be the star, in your way...

★★★★★ Sun opposite Moon, orb -3° 13'

In your chart, two polarities are clearly opposing - or complementing – each other: on the one hand, solar values, the image you project and the models you follow. On the other hand, lunar values, moments of letting-go and well being through casualness. When you commit yourself in a project, it is often to the detriment of your peace of mind. Conversely, you completely feel that you are your true self only when you are no more under the scrutiny of the outside world. Therefore, you separate your social and professional activities from your private life and you seldom match the requirements of the former with those of the latter. It may be a hurdle, a fundamental anxiety. It may also be an obvious asset, when it is well integrated: in that case, you succeed in assigning to yourself, and in fulfilling, objectives that are not necessarily in line with your intimate natural demands, which are preserved and separated from your intentions, your ambitions and your expectations. Thus, a strong will can turn this Sun-Moon hard aspect into a rich instrument for creativity. A shadow zone, or uncertainty, still remains: on the affective plane, you are very sensitive. May be too much, to the extent that you become vulnerable in many circumstances. Because in different periods of your life, your landmarks (solar) and your intimate balance (lunar) will be simultaneously challenged.

★★★★★ Moon square Mars, orb 2° 26'

This Moon-Mars dissonance suggests touchiness and sometimes, aggressiveness. You are irascible and very sensitive to all sorts of threats and dangers. You react very quickly, too hastily. To protect your well being, you must learn to control your mood, to coordinate your actions and to balance your opinions. You are often disturbed by plain facts: either you seek refuge in your intimate realm and refuse to face the truth or, on the contrary, you are engaged in altercations, which forbid all tranquillity. It is important that you balance these two tendencies and that you alternate moments of action with phases of carelessness and relaxation. These two attitudes are relatively irreconcilable.

★★★★★ Moon sextile Pluto, orb -4° 26'

You are a riddle for people... and for yourself. This harmonious Moon-Pluto aspect arouses your desire to understand and to express elements hidden in your unconsciousness. You are interested in the occult, in laws that rule beings and things in the dark. You like to pull strings and to manipulate situations

without people's knowledge in order to remain mysterious. You feel fine when you are not in the limelight, but you intervene in the dark, with subtlety. Your intimate behaviour reveals the distance that you strive to keep in order to protect your inner life. You gladly cultivate the angel of the bizarre, even in your life habits and in your daily rhythms.

Your Affectivity

In your chart, the Sun and Venus are both in Sagittarius. You are a Sagittarius to your fingertips and you think first in terms of independence, sentimental excitement and discovery. You are fond of love without border and you feel in harmony with people who elude your senses and your reason. Your partner does not seem to have anything in common with you? It does not matter! A couple is the most wonderful crucible for enrichment within a mutual respect for everyone's differences. However, it would not be right to believe that you have no taboo or social reference. It is certain that your open-mindedness and your spontaneity prompt you to accept, to love and to cultivate differences. But more than anyone, you can go beyond conventions without upsetting them, and you can surprise without harming... Your paradox: you play with moral sense without being amoral. In love, you are a refined gangster, a "gentlewoman-heartbreaker" or an adorable vamp. The forte of this configuration is the ability to evolve and to give your couple a new momentum when it is needed. It is most unlikely that you ever let the flames of passion fade. Better spread the news. Whoever is a homebody will be in trouble!

On the affective plane, Tina Turner, you are open, straightforward, spontaneous and you make friends easily because your enthusiasm is expressed jovially, directly and is respectful of well-established moral values. In some cases, you may be opposed to your natal environment or to your family because of your taste for freedom, exoticism or all forms of independence and emancipation. Your feelings are burning and you often get carried away quickly. However, your ability to make friends easily is likely to favour some instability; in other words, faithfulness is not your top priority as long as you have not yet found your soul mate. Ideally, for you, life together must have some degree of mobility and include travels and fresh air. Within your relationship, you need to feel freedom and independence, which you need since your childhood. Under such conditions, harmony and faithfulness can be achieved.

Tina Turner, your Venus has a natural affinity with this house. She feels very comfortable and she gives her best in terms of intensity of feelings, artistic creativity, inclination for leisure, entertainment, fine arts and music gifts and even, the capacity to easily communicate with children. With Venus in this house, more than in any other position, the affectivity is increased and endows you with an active and enterprising attitude, in this area of life. Creativity is associated with the 5th house and Venus here allows you to blend pleasure and motivation, not only in the field of artistic creation and entertainment, but also in love, where you are prompted to fearlessly create or to actively develop romantic relationships with the elected person. Besides, you are particularly at your best here, more ready to extend extreme kindness, warmth or seduction than in any other of your daily activities. However, the danger with this position is to fall prey of your own great ability to please, to seduce or to enjoy yourself, be it through romantic dissipation or through sheer pleasure to shine.

★★★★★ Venus square Neptune, orb -0° 15'

You are very idealistic in love and you may be blind. In many circumstances, you deem your sentimental life heavenly and you lay yourself open to delusions. Love is a dream and waking up is often painful. Your imagination distorts the game of intimate situations. It is important that you keep your sense of

reality and that you avoid to embark upon dark or muddled paths. Forget about artificial paradises! The Tradition very rightly insists on the tendency for impossible love affairs. Your demand and your thirst for the absolute may make you dread experiencing a common life that is inevitably flawed with compromises and vagaries. The object of your affection is idealized « because it was him, because it was me » and you do not reckon objective elements that will resurface later in full force. With this planetary configuration, the danger is in the idealistic, even fanciful, nature of your affectivity. It is certain that love cannot be bought or reasoned. But how is it possible to live an absolute passion on a daily basis? You must control your heart impulses and, without losing the sentimental riches that are part of your charm, you must put what you love in harmony with what you dream of.

★★★★★ Venus trine Saturn, orb 0° 17'

You favour deep feelings and a sincere affective life. In love, you are not content with shams or uncertain compromises. Your couple's relationship is based on mutual trust. You strive to build a lasting link, a true love that complies with your aspirations and your heart of hearts. This harmonious Venus-Saturn aspect indicates wisdom. Inexpressible truth is preferred to appearances. A love affair is an adventure, above all. Discovering the other one, step by step... any relationship takes a fundamental dimension right away. It is relevant to mention a little puff of romanticism and a passionate nature, although quite modest and reserved. You do not commit yourself thoughtlessly! This is a major asset for long lasting love. You are able to question your affective behaviour and to adjust to your significant other. You handle crises quite well and you overcome all the difficulties inherent to amorous rapports.

★★★☆☆ Venus square Jupiter, orb 3° 54'

This Venus-Jupiter dissonance indicates a strong will to seduce. However, there may be discrepancies between your words and your actions, as well as between your behaviour and your instinctive reactions. You may be carried away by a maelstrom of emotions, feelings and pleasures and you do not consider the possible consequences of your superficial attitude. Therefore, the apparent state of grace may turn into delusion. Proprieties and necessities of the moment forbid you to experience your desires. What you deem reasonable does not suit your heart's impulses. What a dilemma... Hopefully, as time goes by, you may reconcile your desires, your life patterns and the reasons of your heart with those of your mind.

★★★★★ Venus bi-quintile Uranus, orb 0° 24'

Your charm lies in the originality of your approach to love and in your uncompromising attitudes. Your motto? Freedom of love, whatever the price! Should your sentimental life become dull, you find a solution: you are romantic and you reinvent your couple's life, you give a new and unexpected momentum to your emotions. You create the kind sharpness that contributes to your exceptional affective life. You do not fear love at first sight or blazing passions. On the affective plane, you know where you are heading for, whom you love ... or love not. There is an indisputable intransigence. The heart impulses are irrevocable and implacable. You dream of a sentimental life that fulfils your aspirations and you use all possible means to achieve your ideal. Even though you may have to make the necessary sacrifices.

The Way You Take Action and Your Sexuality

You express your energy in a vague and random manner, Tina Turner. This is not a handicap, but it prevents you from reasonably planning your long-term actions. You are a bit whimsical and scattered, sometimes hyperactive and willing to devour obstacles with your big shark teeth, but often, you take the

easy way out because of your desire for tranquillity. You loathe conflicts and your cleverness and your flexibility allow you to achieve your goals while shrewdly worming your way through difficulties. Your intuition and your imagination are the assets that compensate your lack of efficiency and discipline. You are much more successful when you work for a noble cause, usually a collective one, sometimes political or spiritual ones. On the sexual plane, you are whimsical and impossible to categorize. You are so changing and malleable that you can shift from one extreme to another, according to your partner's personality, because your adaptability and your flexibility are really strong.

You have a tendency to think relationships in terms of a duel, where one of the partners must hold sway over the other one, Tina Turner. It may be disturbing, but you are satisfied because you know that your strong natural authority enables you to be in the domineering, and not in the dominated position!

Therefore, you excel in all activities having an important relationship component, or with some form of rivalry, authority, or fighting: a critical and uncompromising presenter, a prosecutor, a salesperson responsible for canvassing (although it may be double-edged), an attorney (but not to the defence, of course) etc.

You appreciate people who have the energy to take decisions. For you, in the end, to take action means to confront others, for worse, but hopefully, very often, for better.

★★★★★ Sun square Mars, orb 0° 47'

This aspect shows impulsiveness, a fiery character and sensitivity all on edge. Excess of strength and of energy may jeopardize your life balance and cause impulsive and unconsidered actions. Your ideals are not always in line with your deeds. You are certainly reactive and you stand for yourself heroically. But your untimely fits of anger may worsen existing tensions and bring about incontrollable situations. Facts contradict your aspirations. When this configuration is properly reined in, it becomes an inexhaustible source of passion and energy.

★★★★★ Mars inconjunction Pluto, orb -1° 59'

There is a limit to your respect for laws and norms! Morals, conventions, social marks are of little value to you. With a touch of anarchy in the soul, you disregard conventions and you experience a sort of personal revolution. You prefer unconventional actions to dull conformism. To express your differences, you use a wide scope of possibilities that ranges from brewing revolt to ideological renunciation. Sometimes, you dismiss concrete facts that are nevertheless unavoidable. Hence, you undergo delusions and backlashes. You may also act rashly, to the detriment of your ideals. It is important that you control your actions and that you balance the respect for constraints with your personal demands and inner motivations.

Your Intellect and Your Communication Style

Your thirst for learning is considerable, Tina Turner, and you can spend a lifetime studying languages, geography, philosophy and law, particularly. You are open-minded and you want to abolish all kinds of frontiers. The humanist, who is dormant in you, may turn into a “frequent traveller” reaching out to others in order to understand them and communicate with them. You express your opinions and your beliefs with honesty and clarity and likewise, you receive others' views with enthusiasm. You have numerous centres of interest and you may be perceived to be superficial, heedless and over-optimistic. However, if you manage to control your tendency to scattering, all your encounters, all your discoveries

can positively influence your philosophical life approach.

It is usually in the private sphere that you can communicate and think for your best interests, Tina Turner. Your family is very important to you, and your intellectual interests incline you towards real estate matters, asset management, family business, etc.

You may also work at home, and in any case, you are generally more outgoing when you are in a safe and private environment. When you are outside, you come across as unobtrusive, either because you don't pay much attention to events that are not directly related to you, or because you are just shy and on the defensive when it comes to worldly things or public domain.

★★★★★ Moon opposite Mercury, orb -0° 25'

The Moon suggests relaxation, whereas Mercury implies a discoverer's mind. They both make sense and each one requires special attention, as they are sometimes upsetting. This Moon-Mercury aspect is likely to bring about nervousness or instability. Nervousness stems from the multiplication of your spots of interest and the perpetual restlessness of your mind, which prevents relaxation and well being from settling in. The outside world constantly appeals to your attention and you shift from one issue to another, to the detriment of your tranquillity. Therefore, it is important that you find the balance between two antinomial attitudes: letting-go versus curiosity, tranquillity versus communication. The new persons you meet with are not necessarily trustworthy and there is no certainty that the contact is harmonious. It is important that you use both influences alternately.

★★★★☆ Sun conjunction Mercury, orb 3° 39'

You know how to play with your image, how to give multiple representations of yourself. A precious asset: you are sensitive to other people's opinion and you adapt yourself to the audience. Of course, there is a "show" side in your manner that may prevent perfect cohesion. But that's the other side of the coin, for an extraordinary capacity to discover. This aspect translates into an acute sense of observation, an intense desire to learn and to bring everything to light. You strive to be informed in many circumstances, to understand the machinery of the world surrounding you, particularly regarding all human topics. And you will change according to that information and the knowledge gained. You have the chameleon's adaptation powers. And its vulnerability, as well.

★★★☆☆ Mercury square Mars, orb -2° 52'

This Mercury-Mars dissonance brings about impulsiveness into relationships and contacts. Your sense of controversy and criticism leads to blunders and thoughtless actions. Your verbal violence may harm the efficiency of your actions. You certainly display your views without circumlocution. Your straightforwardness would be commendable if it did not cause those blunders that spoil many situations. It is important that you learn to control your decisions, to coordinate your mental abilities and your fieriness, so as to fully express the quickness of your mind and of your action. Learn to count to ten before you say anything, as it is an excellent exercise for you!

★★★☆☆ Mercury trine Pluto, orb 4° 52'

Gullibility does not belong to the collection of your faults! You have a good grasp of human mechanisms and you easily detect flaws, calculations and hidden motivations. Human relations are subtle, never black or white, always complex. You often speak in riddles or in negations and you prefer to use the ambiguous language of symbols rather than the simplistic clarity of words. In this way, you fuel your mystery. On the relationship plane, your strength lies in the delicate art of highlighting flaws, detecting

what destabilizes the enemy or, on the contrary, identifying what is relevant to your friends. You are more interested in what is concealed than in what is openly said. More often than not, you exercise an indisputable clear-sightedness.

★★★★★ Mercury quintile Neptune, orb 0° 25'

Your sense of psychology and of human intimate mechanisms is acutely developed. Your relations are nuanced, clever and guided by a good intuition of individuals. Without effort, you pick up what is at stake in relationships and in contacts. Your « sixth sense » inspires you and may take you into strange roads. On the relations' plane, there is an indisputable subtlety. You know what you should not say or, on the contrary, you naturally find the suitable words. Your natural and non-rational attitudes often prove right. The unknown fascinates you... Your curiosity for occultism and mystery is keen. Besides, life is a huge human enigma for you.

Your Goals, Motivations, Career, and Destiny

Your Sun is posited in the 4th House

Unless salient factors indicate otherwise, Tina Turner, your nature is not very extroverted and your tendency is to keep to yourself emotions that may run very deep. Your will prompts you to create some sort of security, or cocoon, around you.

You are deeply attached to your family and to your initial home. You need this cosy and warm atmosphere, your parents' love and your family security, and later you reproduce them in your adult's home. Such strong bonds with your family and your home benefit your self-assertion as they combine professional efforts with presence at home. Working at home is particularly suitable, as are, indirectly, professions related to genealogy or even more, to real estate, because you are comfortable with the security aspects of the places you visit.

Your father often plays a major role, possibly an excessive one, with the danger that he may smother your desire for freedom and autonomy and contribute to aggravate your already strong natural introversion.

You are what is called belated and it is mainly during the second part of your life that you can concretely and efficiently exercise your will. Your assets lie in your determination to build a stable and comfortable home. However, family conflicts may exist and you may quarrel with your father over authority matters or over your projects; later, you may even undergo this sort of troubles in your own home if you are not flexible enough.

The ruler of your chart is in the 4th House

The ruler of the Ascendant, also referred to as the chart ruler as explained in a previous chapter, is also posited in one of the twelve Houses of the chart. Just like the Sun in his House, the ruler of the Ascendant provides certain abilities, or it makes you appreciate more keenly certain areas of life.

The ruler of your Ascendant is in the same House as your Sun. This specific feature of your chart strengthens the Sun's characteristics previously delineated.

Aspects influencing your ambitions

Regarding your destiny or your career, the following aspects of your natal chart allow to fine-tune what has just been said above:

★★★★★ Sun trine Pluto, orb 1° 12'

This harmonious Sun-Pluto aspect indicates an exemplary clear-sighted mind. Without destabilizing your appearances or your personality mask, Pluto makes you aware of your subjective and questionable character, as well as of your manner. You never take yourself completely seriously. You have a good grasp of human nature's complex games, without gullibility, without excessive simplification. Because you can perceive hidden elements underlying any situation better than anyone else, you are acknowledged as perspicacious. This aspect allows you to distance yourself from difficult circumstances and to remain impassive when you must overcome pitfalls.

★★★★★ Sun trine Jupiter, orb -5° 07'

This harmonious Sun-Jupiter aspect indicates an optimistic background that usually wins the entourage's adherence. It also suggests ambition and generosity and favours social integration and success. The desire to earn general consideration prompts you to display energy, joviality and benevolence. However, opportunism may be the other side of the coin. As you strive to win everyone's esteem, you may fall into disrepute. It is important that you remain clear-sighted so as to persistently pursue your long-term aims without believing that you should always « grab each and every opportunity ». However, this aspect remains an element of success because it allows you to adjust your objectives to the context, to whatever the situation offers or, on the contrary, to force your way through events and to achieve your ideals.

★★★☆☆ Neptune sesqui-quadrate Midheaven, orb -0° 27'

Owing to this dissonance between Neptune and your Midheaven, Tina Turner, you may have difficulties in knowing what you want regarding your professional orientation. Your imagination and your flexibility cause contradictory feelings and sometimes result in indecisiveness. You are doubtful about the path your social or professional destiny should follow. There is definitely nothing serious to worry about. It is just that Neptune represents a heavy emotional burden which you must firmly deal with, so as not to delay your trek towards success!

★★★☆☆ Venus sesqui-quadrate Midheaven, orb 0° 43'

Venus is in slight dissonance with your Midheaven, Tina Turner. There is nothing really serious with this type of configuration, except that in some circumstances, you feel that your natural kindness is not acknowledged rapidly enough, or that it is not as appreciated as it should. It may happen that a female, or the fair sex in general, does not correctly understand you, or that she acts against your interests. There are usually no negative consequences since Venus is not a "harsh" planet. It is up to you to put in the effort to better show your sincerity and to avoid any misunderstanding.

★★★★★ Uranus conjunction Midheaven, orb 8° 41'

Uranus is in conjunction with your Midheaven, Tina Turner. This very important aspect usually indicates a destiny which, in some rare life occurrences, takes most suprising twists. Like trans-Saturnian planets, out of the blue and beyond free will events occur by accident, as if they were caused by some sort of fatality. Thus, it is possible that your life changes its course completely and repeatedly, in a more than above average way, when transits and progressions activate your Uranus-Midheaven conjunction. Uranus stands for life upheavals, surprise, rebellion, freedom, and nonconformism. Whether it indicates

inner needs or external events, which is the most frequent case, your destiny is very likely to be deeply disrupted, especially when transiting Uranus forms major aspects with your natal Midheaven (towards the ages of 21, 28, 42; 56, 63, and 84). Uranus' half-return (around the age of 42), is the most important one. It is also possible that your career or social destiny takes a stronger Uranian tone, with tight connections to modernity, space, astrology and out-of-the ordinary subjects, as well as physics, electricity, speed, etc.

★★★★★ Mars sextile Midheaven, orb 5° 53'

Your energy serves your professional goals and your social ascent in general, Tina Turner. This beneficial aspect of Mars to your Midheaven endows you with strong dynamism, and it rewards your sustained and efficient efforts. You enjoy taking action, and your results are gratifying most of the time.

Your Assets and Your Part of Joviality

Tina Turner, your sensitivity, your emotions, and your artistic capacities, particularly regarding music and rhythm, are strongly increased with this position of the planet of Greater Fortune in this borderless sign. It endows you with an artistic and endearing side as well as with flexible and mobile ways to consider your relationships and your environment. Your dreamy state of mind and your sensitivity to other people's sufferings may prompt you to get involved with compassion in great humanitarian causes.

Tina Turner, the planet of Greater Fortune in this house is a heaven-sent present. It indicates inheritances, intense and fulfilling sexuality as well as a strong and secret intuition. You may be content! Your feelings also are magnified and deep. Undeniably, you are very lucky with this position of Jupiter in your chart.

The planet Jupiter symbolizes expansion, broadness and generosity. Jupiter is associated with the functions of synthesis, enthusiasm and optimism. In your natal chart, his house position is more important than his sign position because, like Saturn, Uranus, Neptune and Pluto, he is a slow planet. Many people born in the same period have Jupiter in the same sign. This is the reason why the sign occupied here is less meaningful than when it is occupied by the so-called fast planets, i.e. the Sun, the Moon, Mercury, Venus and Mars. Therefore, some caution is to be exercised as you read what follows.

Jupiter in Pisces increases your natural generosity and your dedication capacity. Your empathy is strong and you are inclined to offer your strength and your enthusiasm to the most deprived people and to give unlimited assistance to others. Your imagination is powerful and your feelings may flare up easily: with your sensitivity on the alert and your unbridled affectivity, you belong to the category of people who intuitively detect other people's sufferings and most valuable qualities of the heart, as if you were a human radar.

Your Serious Side

Your natural fieriness and your impulsiveness are slowed down and well-controlled. You gain in stability, tolerance, and stamina what you lose in spontaneity, competitiveness, and freshness.

Despite what you may say, Tina Turner, you perceive all things foreign or remote as worrisome, and during the first part of your life, you do not travel, or you do not enjoy travelling. Your sober, sometimes conformist concepts of things and persons can hardly reconcile with the spirit of adventure, or with amazing and unknown events linked to foreign matters, both literally and figuratively.

With time, you become more and more interested in what you do not know and you often use your natural rigour and seriousness to gain higher knowledge in the fields of moral, philosophy, religion, or politics. During the second part of your life, your reluctance for long-distance trips may turn into a thirst for discoveries and an unbridled freedom to bite, at long last, into the fruit that used to seem so dreadful to you.

The planet Saturn symbolizes contraction, effort, time, limitation and concentration. Saturn eliminates anything that is not authentic, sooner or later. It is impossible to cheat him as he gives an irresistible desire to form a coherent whole with oneself, in responsible and wise ways. He is the great purifier. He represents our limitations but also our truth. In your natal chart, the house position where Saturn is posited is more important than his sign position because, like Jupiter, Uranus, Neptune and Pluto, he is a slow planet. Many people born in the same period have Saturn in the same sign. This is the reason why the sign occupied here is less meaningful than when it is occupied by the so-called fast planets, i.e. the Sun, the Moon, Mercury, Venus and Mars. Therefore, some caution is to be exercised as you read what follows.

Saturn in Aries decreases your impulsiveness, your primary-ness and your spontaneity. But it endows you with more patience, tolerance and reflection in the long run.

A Few Special Points

Your Uniqueness and Your Utopias

This is one of the most potent configurations. Unexpected disruptions of considerable intensity often occur on the factual plane. Embracing changes is the basis of the success of your destiny, which is very likely to include extreme variations, sometimes towards the most glorious heights, sometimes towards ordeals that you face with courage and determination, despite your unpreparedness.

Originality is certainly the context of your professional life or your destiny, in one way or another. Whether it is expressed through your very special area of expertise (high technology, space, aviation, astrology, television, etc.) or through the totally hectic nature of your progression (sudden changes of orientation), you are not able to plan what is coming next. Unforeseen events undertake to make a clean sweep of your certainties. This may offer many advantages if your state of mind is ready to approach life as a journey where your only freedom is to adjust in the best possible way to new emerging situations.

Most of the time, you are very independent, very keen to show your professional talents in a unique and modern way. You are a kind of pioneer or rebel in your area, which allows you to better assert your genius.

Your Inspiration and Your Illusions

Your relationship to money is particularly vague. You tend to avoid analyzing your financial resources, as though this topic were neither important nor real. You belong to the category of people who never know how much they have in their bank account and in their purse.

This approach is positive in that, if you have a strong sixth sense, you can get good bargains more easily than other people... It may be some sort of blindfolded fortune, although there are real dangers of losing a lot and of being deceived.

Beware not to overstep legal boundaries, lest someday your carelessness in the financial area gets you into big troubles. It would be a pity if what you earned, thanks to your sixth sense, were taken away from you.

Your Passion and Your Authority

You have an unconscious desire to experience your ordeals to the bitter end, regardless of their consequences for your future.

Your clear-sightedness and your investigative capacity enable you to solve mysteries in a deep and intuitive way. But they may also lead you into conflicts, crises and confrontations with enemies who are ruthless, at least in your opinion; having said this, you precisely have the ability to cope with them and to deeply evolve in the process.

You are predisposed to go through ordeals, on the human plane or in the area of health. The pains thus triggered contribute to transform you more rapidly than the majority of people. Your destiny is certainly to progress forward and, above all, to consider such ordeals as stepping-stones instead of signs of some unhealthy fatality.

The Tradition indicates that you may be prompted to take action in humanitarian causes, all the more so, because your personal ordeals incite you to readily help others, even though this tendency is not at once visible.

Your Isolated Planets

In general, the ten planets of the chart are connected to other planets by major or minor astrological aspects. It is owing to those ties that the planets' energies can manifest in the chart owner's personality and play out within safeguards according to a specific tonality.

It seldom happens that in a natal chart, a planet is totally disconnected from the nine other planets.

Astrologers have observed that when such a case occurs, the person feels the energy of the unaspected planet in quite a singular way, very jerky and powerful at the same time. Thus, for instance, the famed astrologer Jean-Baptiste Morin de Villefranche wrote that "an unaspected planet heralds that something strange or extraordinary will take place regarding the meanings of the house in which the said planet is posited" (source : l'astrologie selon Morin).

Rules for detecting an unaspected planet: among all the testimonies that we have reviewed to this day, based on our experience, we tend to agree with American astrologer Janis Huntley who accepts seven aspects, which involve the zodiacal twelve sections of 30 degrees. The aspects to be considered are the conjunction (0 degree, cooperation or tension), the semi-sextile (30 degrees), the sextile and the trine (60 and 120 degrees respectively, aspects of cooperation), the square and the opposition (90 and 180 degrees respectively, tensed aspects), and the quincunx (150 degrees, slightly tensed). In this detection, the chart's angles are not taken into account.

In any case, it is important to remember that an isolated planet clearly expresses its influence when it is a personal planet. Thus, when the Sun, the Moon, Mercury, Venus, or Mars is isolated, it is certain that the effects described by Jean-Baptiste Morin de Villefranche will become manifest. As for Jupiter, Saturn, Uranus, Neptune, and Pluto, one must be cautious because the volume of cases documented is not yet large enough.

Your chart has no isolated planet, and this particular case does not apply to you.

Annex 1: Your Minor Dominants

The five following dominants are less significant than those described at the beginning of your report. They may not be strongly felt. In some cases, they add several minor details to the analysis of your character, but they are rather for curiosity purposes. It is not necessary to take them into account when you first read your portrait.

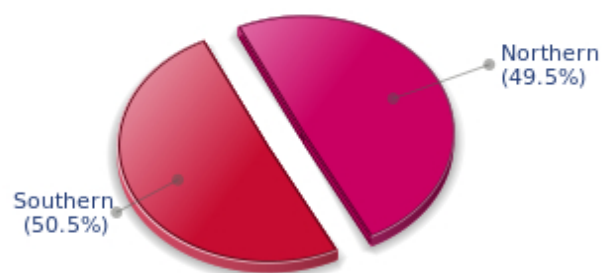
Your Planetary Repartitions: Northern, Southern, Eastern and Western Hemispheres

The axis linking the 1st house's cuspide (the Ascendant) to the 7th house's cuspide - the Descendant - divides the zodiac into two bowls, a superior bowl, in the South, and an inferior bowl in the North. Quoting an expression by the famous American astrologer Rudhyar, the Southern part and the Northern part correspond to two functions: "being" and "doing". Other concepts are also associated with this North and South distribution, such as introversion - Northern hemisphere - and extraversion - Southern hemisphere - being or appearances, inner life or external life, reflection or action, dreaming one's life or living one's dreams, the abstract or the concrete, backstage or limelight.

This is not about determination but about personal inclination: thus, some people will be thrown into public life despite a prominent Northern hemisphere. If this happens, however, it will not be due to their will, their taste or their deep nature. Conversely, a prominent Southern hemisphere will not bring about a famous destiny to its owner, even if he tends to turn the spotlight on himself, or if he looks for a more active life. It is a matter of deep nature and natural inclination. Of course, none of the typologies is "superior" to another.

In your birth chart, Tina Turner, the ten main planets are distributed as follows:

Your Northern and Southern Hemispheres



Tina Turner, the planetary elements of your chart are well balanced between the North and South hemispheres. As a result, your public destiny and your inner life are harmonious, and there is no conflict between your actions and your thoughts. Your private and public spheres coexist in harmony and naturally match your temperament.

The birth chart is divided into two other parts, Eastern and Western, by the axis linking the Midheaven to the Imum Coeli.

The Eastern part, on the Ascendant side, shows the person's ego, will, magnetism, and vitality, whereas the Western part, on the Descendant side, symbolizes other people, communication, relationships and their influence, as well as flexibility and adaptability.

Tina Turner, here is the planetary repartition in your Eastern and your Western hemispheres:

Your Eastern and Western Hemisphere:



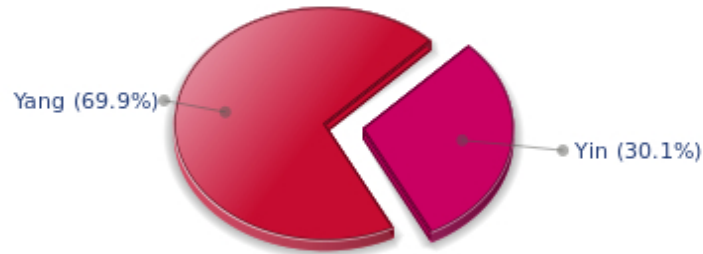
The predominance of planets in the Western hemisphere of your chart means that you are quite flexible, capable of empathy, convivial and communicative. An excellent factor for many professional activities or for your social or sentimental life for example.

A definite asset... provided that you are not at the centre of the decisions you must take in your life: you may be tempted to listen to the last person who spoke, and your flexibility won't always get you out of the tight spot. You are therefore advised to learn to decide alone and to cope with the consequences of your actions with courage and without regrets. This attitude will allow you to combine flexibility and action, adaptability and absence of hesitation.

Your Yin and Yang Polarity

The twelve signs are divided into two polarities, called active or passive, or sometimes masculine and feminine, positive and negative, Yang and Yin. This classification corresponds to two quite distinct tonalities, the first one bringing extraversion, action, self-confidence and dynamism, the second one, introversion, reactivity, reflection and caution. None is superior to the other, each group has its own assets and shortcomings. Odd signs - Aries, Gemini, Leo, Libra, Sagittarius and Aquarius - belong to the first group, whereas even signs - Taurus, Cancer, Virgo, Scorpio, Capricorn and Pisces - belong to the second group.

Your Yin and Yang Polarity



According to the disposition and qualities of your planets and angles, you are rather influenced by Yang energy, the active polarity, Tina Turner: more concerned about actions than reflection, you sometimes rush without standing back and without the deepness that is needed. However, your spontaneity prompts you to take fresh starts, even after repeated failures caused by your rashness.

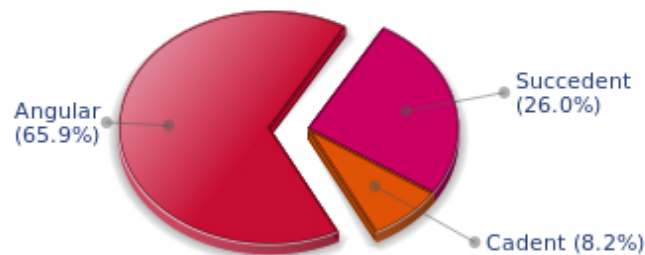
Your Houses' Accentuations

Houses are split up into three groups: angular, succedent and cadent.

The first ones are the most important ones, the most "noticeable" and energetic houses. They are the 1st, 4th, 7th and 10th houses. Their cuspides correspond to four famous angles: Ascendant for the 1st house, Imum Coeli for the 4th house, Descendant, opposite the Ascendant, for the 7th house and Midheaven for the 10th house, opposite the Imum Coeli.

Planets are evaluated according to a whole set of criteria that includes comprehensive Western astrology rules. At their turn, planets emphasize specific types of houses, signs, repartitions etc., as previously explained.

Your Houses' Accentuations



Your angular houses, namely, the 1st, 4th, 7th and 10th houses, are very emphasized in your chart, Tina

Turner: according to the Tradition, they are the strongest and most dynamic houses. Should the rest of your chart concur, angular houses suggest that you are an enterprising, energetic and assertive woman. Indeed, angular houses are said to generate impulsions and to give a powerful and domineering personality.

Unusual fates are often linked to a predominance of angular houses, but this is only a partial indication...

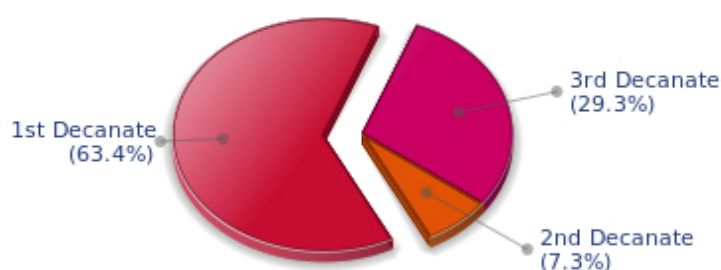
Your Esoteric Decanates

Each sign contains 30 degrees and can be divided into three equal parts: the decanates. The Tradition indicates that specific meanings can be associated to each of the three decanates. Their sphere of activity is usually limited to the Sun sign, however, it is even more interesting to observe the distribution of all the planets in the chart to get an idea of the respective importance of the three decanates, which can complement the description of the personality.

These meanings must be considered with the greatest caution. Indeed, they are minor characteristics that can only underline other outstanding traits of character.

Traditionally, the first decanate highlights the characteristics of the sign where a planet is located. The two other decanates correspond to sub-dominant planets, depending on the nature of each sign. This system leads to a multiplication of meanings and it is impossible to have a clear understanding: here, we prefer to give only the meaning of one decanate in comparison with the other two, within the birth chart as a whole. Again, the greatest caution is needed with regard to this minor indication as it is not always reliable: it is not essential that you read these texts in the beginning. You can get back to them later on, once you have read more important interpretations

Your Esoteric Decanates



The first decanate, which means the part between 0° and 10° of any zodiacal sign, prevails in your natal chart, Tina Turner: this decanate is traditionally linked to vitality and physical constitution, and may indicate that you efficiently express your concrete energy on the material and sensual planes.

Annex 2: Karmic Study

The karmic theme is a good complement to the psychological portrait, or natal chart. This analysis is based on the positions of the Lunar Nodes, the Black Moon and the Part of Fortune: they are also called fictitious points and describe the spiritual purpose of your destiny. Because there is in all of us an experience and a quest, our life is an evolutionary journey... provided that we head towards the right direction, of course! Indian astrologers highly prize the Nodes axis (North Node and South Node). It is the Ariadne's thread that we are invited to follow. The Black Moon indicates the sector where we are most likely to transform or to transcend, whereas the Part of Fortune points out the area where we can easily express our specificity.

The Lunar Nodes: a spiritual path

Lunar Nodes have their roots in the Indian tradition and they are based on a simple concept: each of us have a mission of their own, here on earth, a destiny, a course. According to the Indian philosophy, life is a school: the nodal axis describes our past experiences (South Node, our karma, our spiritual inheritance or our previous lives), and our aims on earth (North Node, our Dharma, the purpose of our current incarnation). This is the reason why the study of the lunar nodes is called "Karmic astrology". Here, we shall not step into hypothetical past lives. Wherever our current trends may come from, all that really matters is that we become aware of the purpose of our life, its finality and our dharma. We are likely to understand our life purpose around the age of 37, when the Lunar Nodes return to their natal position.

During the first part of your life, you manifested an acute sense of challenge, a taste for personal initiatives and an unfailing fighting spirit: these qualities prove helpful in handling any possible setback today. However, you must make an effort to accept your entourage and adopt more open and accommodating attitudes! Life teaches that you must become more sociable and develop the flexible behaviour that you lack. Do not play around with mavericks; It is important that you earn your close friends' affection and that you rely on their collaboration. You slowly become more aware of other people's reasons, of their desires and their concerns. Your destiny may be influenced by relationships. If you had a tendency to provoke people or events, now you have gained complementary qualities: diplomacy and human tact, cleverness in the art of reconciling opposite views. It is true that it required a huge personal effort!

The Lunar Nodes highlight all types of discoveries and explorations. There is a strong desire for travels, whether actual trips or spiritual, inner ones. Since your childhood, you are particularly interested in unlimited spaces and total freedom. You never trusted smothering attachments and you always allow your thoughts and actions a free hand. The danger is that your life may be unstable because you so badly need to evolve and to discover... Life is an eternal quest of something else, some vital but hidden dimension that is beyond you. Therefore, it is difficult for you to blossom when your family or work environment is routine. However, it is important that you control your wild tendency (the other side of the coin of the wonderful freedom of thought): life requires more sociability. It does not mean that you must accept a conformism that is too far from your inner aspirations. More than other people, you need to develop your relations, your exchanges and your dialogues. In this regard, your destiny is marked by communication.

Lilith or the Dark Moon

The Black Moon is the spark of refusal and distance that is dormant in all of us. Depending on the sign where she is found in your chart, she highlights the desire to transform and to sublimate a part of your

life. The Black Moon is unfathomable and mysterious. She gives a different dimension to the sector she touches. Her manifestations are subtle; nonetheless, she is powerful, implacable, demanding to the extreme... The Black Moon is also called Lilith. She is the inner flame of your heroism and insubordination.

It is in the humanitarian field that rebellion is best expressed. Your dream is to become the spearhead for a different project of society, the Quixote of altruism. Each individual must be independent, really free to think and to act. Any hindrance to free will makes you indignant! The danger is that you may not tolerate any external constraint. This is probably the price to be paid for a freedom of thought that constitutes the core of your progression.

You decidedly assert yourself as a person made of desires, love and the absolute. If this configuration is not well controlled enough, your thirst for timeless relationships may hamper simple, natural and obvious affairs. You may reject persons whose attitudes do not perfectly live up to your expectations. However, as you keep on looking for your hero, it is very likely that you will find the person to whom fate has relentlessly tied you.

The Part of Fortune in House

The Part of Fortune is a very ancient fictitious point that depends on the lunar phase at the time of birth. The astrological house tenanted is particularly strengthened. In your chart, the Part of Fortune is in the 6th house: your professional life is particularly important to you. Your career is your favourite field of expression: your concern is not to be the leader but to become the best and most accurate person among all the participants. You seek perfectionism. It is within the exercise of self-discipline and a rigorous behaviour that you can fully blossom.

Retrograde Planets

The karmic tradition insists on the issues related to the so-called retrograde planets. They are considered to be the inheritance of a past that was not well experienced, a sort of unfinished business. The interpretations of the retrogradation may seem negative or excessive to you. However, you may relate to a scenario that you have often and repeatedly experienced... as if you underwent several setbacks that all have the same cause. Until the day you become aware of it and you can free yourself from it! Through the slow integration of these planetary energies, you will be able to overcome your difficulties and to pay your karmic debt. Actually, each retrograde planet highlights an opportunity for evolution. Nothing can be achieved without the will to grow spiritually and to defeat your own demons.

The planet Mercury was retrograde on the day of your birth. You probably have to make an effort to harmonize your relations: you are prone to screen others with a critical eye and you do not overlook the slightest flaw. You are exceedingly clear-sighted and you approach your contemporaries with distance rather than with natural. This type of behaviour may be an asset: your enquiring and pernickety mind prevents you from being too gullible. However, your reservations may impede your communication. As time goes by, you learn to establish contacts more spontaneously. During your childhood, you faced problems of expression in your heart of hearts: your doubts prompted you to project an image that was out of touch with the reality... turbulent or withdrawn, you could hardly establish conventional ties. As an adult, you are in a better control of these elements. You still have to find the right way to tell who you really are: this is how you can improve your relationships.

The karma associated with Saturn may border on self-censorship: during your childhood, particularly,

you were doubtful of your abilities and your talents. You had a propensity to put yourself in a no-win situation and to under-estimate yourself. Obstacles abound: taboos and prohibitions of all kind slow down your evolution. Little by little, you learn to re-evaluate your possibilities and to gain more self-confidence. Your personal rigour then turns out to be constructive: you are not destabilized by life ordeals and you practice a self-discipline that favours steady evolution. Although your path may be steep, it is nonetheless safe.

Uranus was retrograding on the day of your birth: you have the soul of a rebel and your behaviour may often be tyrannical or extremist. Your manner has brought you setbacks. You lack the flexibility that spares you the pain of forcing your ways through events. The danger may be that you get trapped into rigid patterns and into personal logics incompatible with others'. This is precisely what your life's lesson is about: as years go by, your judgments are more qualified and your attitudes become less cut-and-dried, less stubborn. You must lose the essentially individualistic character of your childhood and be more open to other people's ideas and problems. In other words, a path of love. Without losing your remarkable resolution, you must practice some form of renunciation and be sensitive to various logics that constitute the wealth of your social life.

Pluto retrograde suggests power issues and mishandled relations: for you, everything comes down to power struggles, submission and domination, Machiavellian manoeuvres, including within your couple... The results are complex behaviours and an obsession for the power to influence people. Yet, life teaches that you must simplify your relations and adopt more transparent attitudes and healthier desires... As years go by, you will tend towards more simplicity and you will slowly discover that human energy can, and must, be at the service of the good, or of well being, in compliance with our individual progression.

N.B: modern astrology attaches less and less importance to the principles of retrograding planets.

Conclusion

A few remarks are needed here in order to allow you to fully take advantage of your astrological portrait: firstly, do not forget that a birth chart is also a photograph of the sky at birth and a structure that not only contains the personality's characteristics, but also its potential evolution.

We all know that, in real life, people begin to know themselves when they are in their forties, or even later. Likewise, several traits of character in a portrait may seem surprising: in most cases, it means that such features are not yet developed.

Some personalities reveal themselves late in life, whereas others are more precocious. It must be remembered that psychological structures are in a state of continuous evolution because they are influenced by unfolding events and gradual maturity. We can never underline strongly enough the "mobile" nature of the personality, throughout a lifetime.

On the other hand, it is difficult to discriminate what is "already present" at this moment in your life when you are reading your chart's interpretation, from what will appear later in the logic of your evolution: you must sort out all the pieces of information provided and, in most cases, you will see that your astrological portrait is helpful for your endeavours to know yourself better.

Finally, several readings of an astrological portrait are usually necessary in order to absorb all its different meanings and to evaluate the relevance of each character trait.

In any case, better self-knowledge obviously contributes to faster personal blossoming, and it is undoubtedly one of astrology's major roles: contributing to know oneself better, in order to improve more rapidly, to deal with one's weaknesses and to avoid its drawbacks, and to take advantage of one's assets as efficiently as possible.
