

Tim Burton's Astrological Portrait





Tim Burton's Astrological Portrait



Introduction	2
Your Planets, Houses, Aspects, and Natal Chart	4
Preamble	7
Your Planetary Repartitions	8
Your Dominant Modes and Elements	9
Your Dominants: Planets, Signs and Houses	10
Your Style, Behaviour, and Peculiarities	14
Your Sensitivity	18
Your Affectivity	19
The Way You Take Action and Your Sexuality	20
Your Intellect and Your Communication Style	21
Your Goals, Motivations, Career, and Destiny	23
Your Assets and Your Part of Joviality	25
Your Serious Side	26
A Few Special Points	26
Your Isolated Planets	27
Annex 1: Your Minor Dominants	29
Annex 2: Karmic Study	33
Conclusion	35



Tim Burton's Astrological Portrait

Introduction

To fully benefit from this portrait, we suggest that you read its introduction and its preamble carefully, and then that to take the time to soak up the interpretations of each chapter. Given the large number of texts, which mirrors the human being's complexity, you may need to go through the contents several times, so as to get a good grasp of their meaning and to know yourself better. This will reward your patience.

The purpose of this report is to describe your psychological portrait and to highlight the most fundamental features on the personal area. The report begins with the analysis of your planetary dominants and outlines your personality's general traits before going into further detail. Minor dominants are analysed at the end of Annex 1, for purposes of clarity. Your report then delineates the various facets of your personality:

In general, even when relationships are not involved, we express ourselves and we feel according to our character and our personal motivations: this is indicated by the Ascendant and the Sun sign which both give details on the way we function. They shed a tremendously important light which allows to figure out your personality. Here, we describe your Sun sign (your inner self), your Ascendant (your behaviour as seen by others), and the ruler of the Ascendant (interesting additional pieces of information about the style of your personality). These descriptions alone cover nearly a third or a half of your psychological signature, depending on your natal chart characteristics.

Then, we address your sensitivity, or in other words, the way you receive things and how you express your emotions ; it works as a constant filter for all your exchanges, even when it becomes a more secondary element in your amorous relationship, because at that moment, affectivity prevails. Sensitivity is the way you perceive things, it is your radar, your daily mood, and at the same time, it indicates how you react to your entourage, on a daily basis. It is what others immediately see of you. In the second paragraph, we explain in which areas of life your sensitivity and your emotions are strongest, therefore, where you are most vulnerable.

After this, it is your affectivity, the way you love and how you charm, that comes into play as soon as you fall in love: the first part indicates its basic structure or its main form. The second part describes the areas where it is best expressed and how you display it, according to your personality.

A third fundamental area deals with your mode of action and your sexuality: how you behave, how you manage to obtain what you want, what kind of desires you have. There are twelve possibilities, very

different from one another. The study discloses the specific one that applies to you. In the second paragraph, we explain in which life areas you may most efficiently take advantage of your capacity for action and for conquest.

Your ways of communicating and of thinking are obviously among the major elements that must be integrated into the delineation and the description of your personality. Indeed, they influence your general behaviour and may modify or enhance the image your project (for instance, extraversion may “compensate” a weak affectivity, but a huge number of cases are possible). An additional chapter indicates the favourite areas where you enjoy communicating, thinking and meeting with people.

Besides, we analyze an even more personal aspect that is important to define and understand what may occur within your couple: each of us have a centre of interest, a privileged manner to be fulfilled or to achieve our destiny; this main motivation is indicated by the positions of your Sun and your chart ruler in the astrological houses and we provide you with its detailed description.

A natal chart contains the potential for specific fulfilment and a whole range of assets, protections and qualities. How does the lucky factor manifest in your personality? In which area can you best exploit your qualities? The answers are precisely revealed to you in this chapter.

On the other hand, we all feel in us a part of vulnerability, doubts and fears. How does this part of solemnity or serious side play out? How is it possible to handle it in order to evolve and to get rid of useless elements? All this information is provided to you in these two paragraphs.

Then, you can discover three additional traits of your personality that must be considered as secondary ones. They deal with your predispositions, which means that they need to be triggered by external events because they are not influenced by your will; let's call it a part of fate. Please, bear in mind that your destiny can unfold only in accordance with what you are: therefore, even if they belong to your more unconscious self, these characteristics are parts of you, definitely.

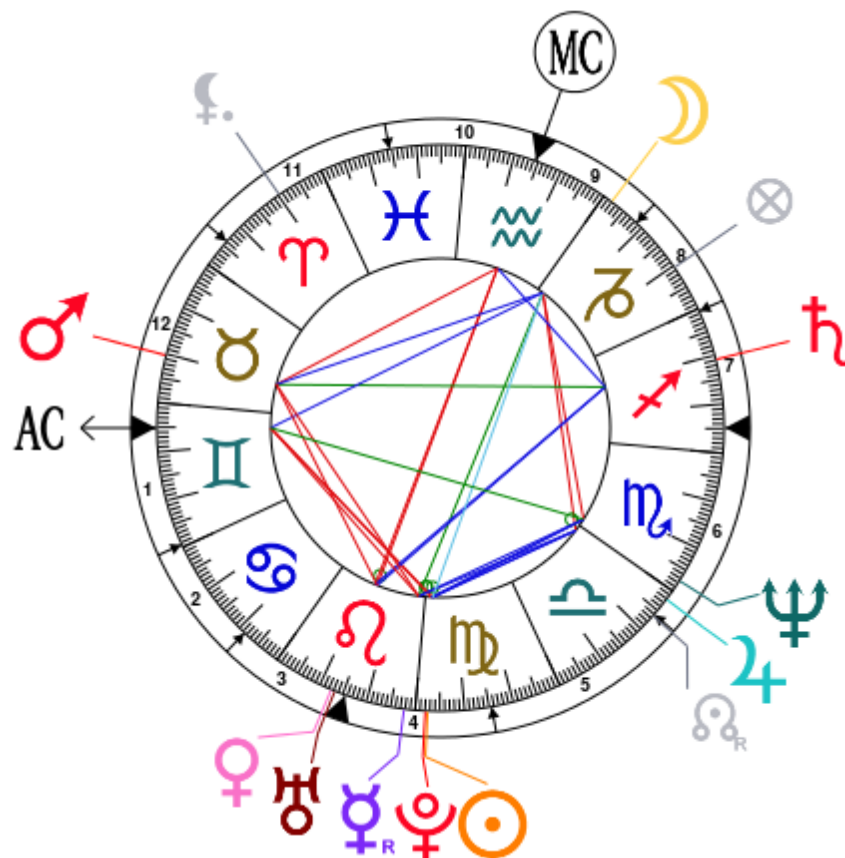
The karmic chart complements the psychological portrait or natal chart. It is based on the positions of the Lunar Nodes, the Black Moon, and the Part of Fortune. These elements of the chart, sometimes referred to as fictitious points, provide information about the spiritual meaning of your destiny. Owing to the fact that we all have in us acquired knowledge and the urge to go on a quest, our life is an evolutionary journey... However, these texts must be read with great caution: this is the reason why you will find this analysis in the Annex 2 of your report.

Your Planets, Houses, Aspects, and Natal Chart

Tim Burton, born August 25, 1958, at 11:49 PM, Burbank (Los Angeles), California [118.18W ; 34.10N ; 7W00]

Natal Planets				In House	Natal Houses (Placidus)		
☉ Sun	2°32'	♍ Virgo	Virgo	House 4	House 1	5°08'	♊ Gemini
☾ Moon	28°02'	♑ Capricorn	Capricorn	House 9	House 2	29°26'	♊ Gemini
☿ Mercury	27°45' R	♌ Leo	Leo	House 4	House 3	21°28'	♋ Cancer
♀ Venus	12°29'	♌ Leo	Leo	House 3	House 4	15°30'	♌ Leo
♂ Mars	20°19'	♉ Taurus	Taurus	House 12	House 5	15°31'	♍ Virgo
♃ Jupiter	27°55'	♎ Libra	Libra	House 6	House 6	24°00'	♎ Libra
♄ Saturn	19°06'	♐ Sagittarius	Sagittarius	House 7	House 7	5°08'	♐ Sagittarius
♅ Uranus	13°17'	♌ Leo	Leo	House 3	House 8	29°26'	♐ Sagittarius
♆ Neptune	2°30'	♏ Scorpio	Scorpio	House 6	House 9	21°28'	♑ Capricorn
♇ Pluto	2°03'	♍ Virgo	Virgo	House 4	House 10	15°30'	♋ Aquarius
♁ Node	23°36' R	♎ Libra	Libra	House 6	House 11	15°31'	♓ Pisces
♁ Lilith	9°45'	♈ Aries	Aries	House 11	House 12	24°00'	♈ Aries
AS AS	5°08'	♊ Gemini	Gemini				
MC MC	15°30'	♋ Aquarius	Aquarius				

In keeping with the common practice, we consider that a planet posited within 1 degree of the next house belongs to that house. We allow an orb of 2 degrees for the ASC and the MC.



List of Your Active Planetary Aspects

Please find below the list of all the active inter-aspects which are interpreted in this report, in addition to your planets in sign, in house, and all your planetary dominants. Since the aspects between slow-moving planets are of a collective nature, they are not displayed, in compliance with our interpretation rules.

- ★★★★★ Sun bi-quintile Moon, orb 1° 3'
- ★★★★★ Sun conjunction Mercury, orb 4° 47'
- ★★★★★ Sun sextile Jupiter, orb -4° 37'
- ★★★★★ Sun sextile Neptune, orb -0° 02'
- ★★★★★ Sun conjunction Pluto, orb 0° 29'
- ★★★☆☆ Sun square Ascendant, orb -2° 35'
- ★★★☆☆ Moon inconjunction Mercury, orb 0° 17'
- ★★★★★ Moon trine Mars, orb -7° 43'
- ★★★★★ Moon square Jupiter, orb 0° 07'
- ★★★☆☆ Moon square Neptune, orb -4° 27'
- ★★★★★ Moon trine Ascendant, orb 7° 05'
- ★★★☆☆ Mercury square Mars, orb 7° 26'
- ★★★★★ Mercury sextile Jupiter, orb 0° 1'
- ★★★★★ Mercury sextile Neptune, orb 4° 44'
- ★★★★★ Mercury conjunction Pluto, orb 4° 17'
- ★★★☆☆ Mercury square Ascendant, orb -7° 23'
- ★★★★★ Venus trine Saturn, orb 6° 36'
- ★★★★★ Venus conjunction Uranus, orb 0° 47'
- ★★★★★ Venus opposite Midheaven, orb -3'
- ★★★☆☆ Mars inconjunction Saturn, orb 1° 12'
- ★★★☆☆ Mars square Uranus, orb -7° 01'
- ★★★☆☆ Mars square Midheaven, orb 4° 48'
- ★★★★★ Saturn sextile Midheaven, orb -3° 36'
- ★★★★★ Uranus opposite Midheaven, orb -2° 12'
- ★★★☆☆ Neptune inconjunction Ascendant, orb -2° 38'
- ★★★☆☆ Pluto square Ascendant, orb -3° 05'

Meaning of Stars

Stars indicate the strength of the aspects. Two solid coloured stars (there are half-stars also), mean that the aspect is powerful enough to be noticed at the first reading.

We strongly advise that you read the paragraphs displaying less than two stars later on, after you have absorbed the full import of the other texts.

The yellow colour indicates a soothing and conciliating aspect, and the red colour, a dynamic and tense aspect. The red aspects enable you to evolve, to take action, and to learn to turn your "weaknesses" into

assets through your life experiences. The yellow aspects are innate strengths on which you rely in order to grow better with the former...

Preamble

When interpreting a natal chart, the best method is to start gradually from general features to specific ones. Thus, there is usually a plan to be followed, from the overall analysis of the chart and its structure, to the description of its different character traits.

In the first part, an overall analysis of the chart enables us to figure out the personality's main features and to emphasize several points that are confirmed or not in the detailed analysis: in any case, those general traits are taken into account. Human personality is an infinitely intricate entity and describing it is a complex task. Claiming to rapidly summarize it is illusory, although it does not mean that it is an impossible challenge. It is essential to read a natal chart several times in order to absorb all its different meanings and to grasp all this complexity. But the exercise is worthwhile.

In brief, a natal chart is composed of ten planets: two luminaries, the Sun and the Moon, three fast-moving or individual planets, Mercury, Venus and Mars, two slow-moving planets, Jupiter and Saturn, and three very slow-moving planets, Uranus, Neptune and Pluto. Additional secondary elements are: the Lunar Nodes, the Dark Moon or Lilith, Chiron and other minor objects. They are all posited on the Zodiac wheel consisting of twelve signs, from Aries to Pisces, and divided into twelve astrological houses.

The first step is to evaluate the importance of each planet. This is what we call identifying the dominant planets. This process obeys rules that depend on the astrologer's sensitivity and experience but it also has precise and steady bases: thus, we can take into account the parameters of a planet's activity (the number of active aspects a planet forms, the importance of each aspect according to its nature and its exactness), angularity parameters; (proximity to the four angles, Ascendant, Midheaven, Descendant and Imum Coeli or Nadir, all of them being evaluated numerically, according to the kind of angle and the planet-angle distance) and quality parameters (rulership, exaltation, exile and fall). Finally, other criteria such as the rulership of the Ascendant and the Midheaven etc. are important.

These different criteria allow a planet to be highlighted and lead to useful conclusions when interpreting the chart.

The overall chart analysis begins with the observation of three sorts of planetary distributions in the chart: Eastern or Western hemisphere, Northern or Southern hemisphere, and quadrants (North-eastern, North-western, South-eastern and South-western). These three distributions give a general tone in terms of introversion and extraversion, willpower, sociability, and behavioural predispositions.

Then, there are three additional distributions: elements (called triplicity since there are three groups of signs for each one) - Fire, Air, Earth and Water - corresponding to a character typology, modality (or quadruplicity with four groups of signs for each one) - Cardinal, Fixed and Mutable - and polarity (Yin and Yang).

There are three types of dominants: dominant planets, dominant signs and dominant houses. The novice thinks astrology means only "to be Aries" or sometimes, for example, "to be Aries Ascendant Virgo". It is actually far more complex. Although the Sun and the Ascendant alone may reveal a large part of the character - approximately a third or a half of your psychological signature, a person is neither "just the Sun" (called the sign) nor just "the first house" (the Ascendant). Thus, a particular planet's influence

may be significantly increased; a particular sign or house may contain a group of planets that will bring nuances and sometimes weaken the role of the Ascendant, of the Sun sign etc.

Lastly, there are two other criteria: accentuations (angular, succedent and cadent) which are a classification of astrological houses and types of decanates that are occupied (each sign is divided into three decanates of ten degrees each). They provide some additional informations.

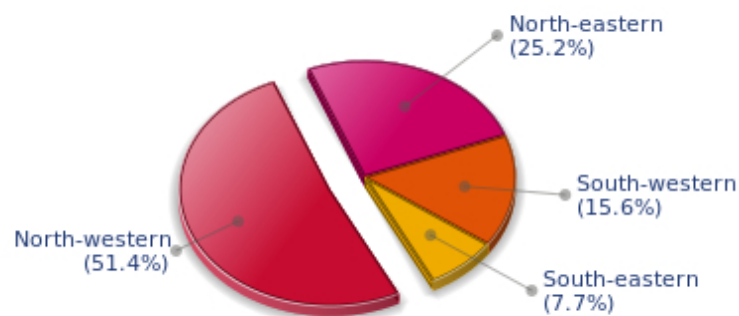
These general character traits must not be taken literally; they are, somehow, preparing for the chart reading. They allow to understand the second part of the analysis, which is more detailed and precise. It focuses on every area of the personality and provides a synthesis of all the above-mentioned parameters according to sound hierarchical rules.

As explained in the introduction of your Psychological Portrait report, minor dominants are analysed at the end of Annex 1, for purposes of clarity.

Your Planetary Repartitions

Each quadrant is a combination of the four hemispheres of your birth chart and relates to a character typology. The Southern hemisphere – the top of your chart, around the Midheaven – is associated with extraversion, action, and public life, whereas the Northern hemisphere prompts to introversion, reflexion, and private life. The Eastern hemisphere – the left part, around the Ascendant – is linked to your ego and your willpower, whereas the Western hemisphere indicates how other people influence you, and how flexible you are when you make a decision.

Your Four Quadrants

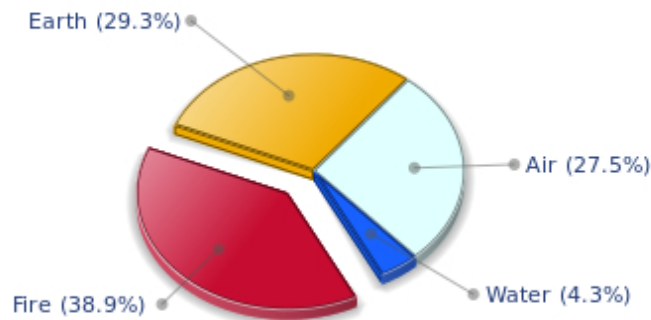


Tim Burton, the nocturnal North-western quadrant, consisting of the 4th, 5th and 6th houses, prevails in your chart: this sector favours creativity, conception and some sort of specialization or training, with helpfulness and relations as strong components. You need others' cooperation in order to work properly, although you are not very expansive: creating, innovating and thinking are what matter most to you because this self-expression enriches you and totally satisfies you.

Your Dominant Modes and Elements

Tim Burton, here are the graphs of your Elements and Modes, based on planets' position and angles in the twelve signs:

Your Four Elements



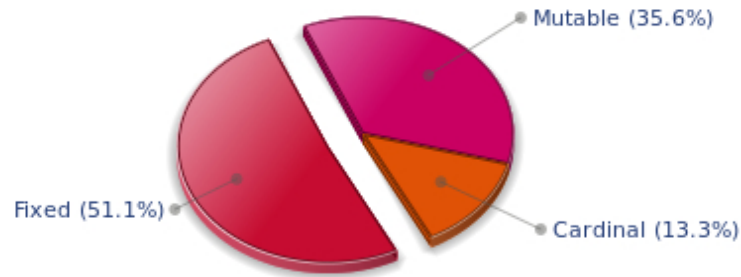
Tim Burton, Fire is dominant in your natal chart and endows you with intuition, energy, courage, self-confidence, and enthusiasm! You are inclined to be passionate, you assert your willpower, you move forward, and come hell or high water, you achieve your dreams and your goals. The relative weakness of this element is the difficulty to step back or a kind of boldness that may prompt you to do foolish things.

Like the majority of Earth signs, Tim Burton, you are efficient, concrete and not too emotional. What matters to you is what you see: you judge the tree by its fruits. Your ideas keep changing, words disappear, but actions and their consequences are visible and remain. Express your sensitivity, even if it means revealing your vulnerability. Emotions, energy and communication must not be neglected; concrete action is meaningless if it is not justified by your heart, your intellect or your enthusiasm.

Your natal chart shows a lack of the Water element, with only 4.26% instead of the average 25%. Whether you are aware of it or not, affective values bring about problems, for you or your close friends. In general, a lack of Water does not necessarily mean that you are unable to love as much as others do. However, you may find it difficult to express the deepness of your heart and of your feelings. In the best cases, you come to terms with it, you adjust, you manage to show more affection or, why not, you pretend to be really affected! In the worst cases, you get into the terrible habit of repressing these essential values and you tend to forget that they are the basis of the richest and strongest bonds between human beings.

The twelve zodiacal signs are split up into three groups or modes, called quadruplicities, a learned word meaning only that these three groups include four signs. The Cardinal, Fixed and Mutable modes are more or less represented in your natal chart, depending on planets' positions and importance, and on angles in the twelve signs.

Your Modes



The Fixed mode corresponds to a majority of elements in your chart, Tim Burton, and represents the desire for security and durability: you are able to concretely appreciate a situation and its stability. You definitely prefer to play the role of a loyal, obstinate and hard-working person, rather than to try new and risky experiences - beware, however, not to confuse obstinacy with intransigence. You structure, cement, and strengthen everything you find on your way: it is your nature, although you are not especially interested in swiftness: slow and steady...

Your Dominants: Planets, Signs and Houses

The issue of dominant planets has existed since the mists of time in astrology: how nice it would be if a person could be described with a few words and one or several planets that would represent their character, without having to analyse such elements as rulerships, angularities, houses, etc!

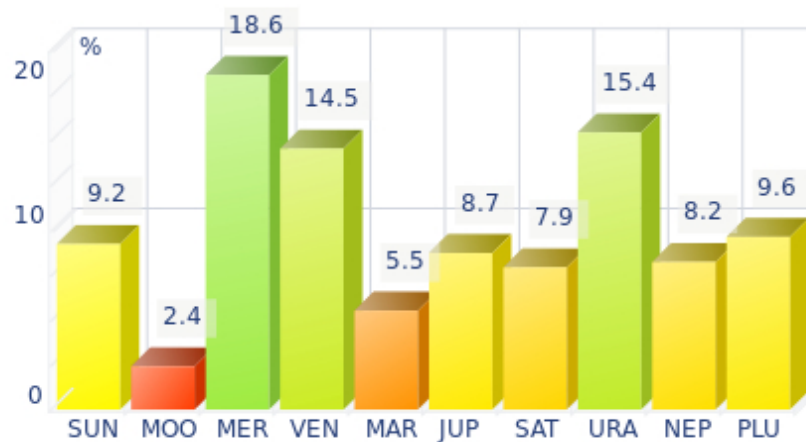
The ten planets - the Sun throughout Pluto - are a bit like ten characters in a role-play, each one has its own personality, its own way of acting, its own strengths and weaknesses. They actually represent a classification into ten distinct personalities, and astrologers have always tried to associate one or several dominant planets to a natal chart as well as dominant signs and houses.

Indeed, it is quite the same situation with signs and houses. If planets symbolize characters, signs represent hues - the mental, emotional and physical structures of an individual. The sign in which a planet is posited is like a character whose features are modified according to the place where he lives. In a chart, there are usually one, two or three highlighted signs that allow to rapidly describe its owner.

Regarding astrological houses, the principle is even simpler: the twelve houses correspond to twelve fields of life, and planets tenanted any given house increase that house's importance and highlight all relevant life departments: it may be marriage, work, friendship etc.

Tim Burton, here is the evaluation diagramme for your planets:

Your Dominant Planets



The three planets that are most highlighted in your chart are Mercury, Uranus and Venus.

With Mercury among your dominant planets, you are certainly cerebral, nervous, swift, curious, quick-witted, and you love to communicate. Your psychological pattern is intellectual, all the more so since Mercury is important, with its whole set of assets but also of weaknesses, obviously.

Your sensitivity, emotions, and heart's impulses give precedence to thinking, which can lead people to believe that you are a playful and witty but heartless person, intellectualizing situations and juggling with words and numbers whilst ignoring human aspects of things. Of course, it is said that cats always land on their feet - this is your Mercurian strength and your trump card!

Your weakness lies in your nervousness, and you may miss your goal because of your "over-intellectualization" that may be detrimental to other kind of energies such as instinct, spontaneity, heart, sensitivity, etc.

Uranus is among your dominant planets: just like Neptune and Pluto, Uranian typology is less clearly defined than the so-called classical seven planets that are visible to the naked eye, from the Sun to Saturn. However, it is possible to associate your Uranian nature with a few clear characteristics: Uranus rhymes with independence, freedom, originality, or even rebelliousness and marginality, when things go wrong...

Uranus is Mercury's higher octave and as such, he borrows some of its traits of character; namely, a tendency to intellectualize situations and emotions with affective detachment, or at least jagged affectivity.

Therefore, you are certainly a passionate man who is on the lookout for any kind of action or revolutionary idea, and you are keen on new things. Uranians are never predictable, and it is especially when they are believed to be stable and well settled that... they change everything - their life, partner, and job! In fact, you are allergic to any kind of routine, although avoiding it must give way to many risks.

With Venus among your dominant planets, one of your first reflexes is... to please! Your look, your charm, and your seduction are omnipresent elements in your behaviour.

Your approach to things is connected to your heart, and for you, no real communication can flow if your interlocutors exude no sympathy or warmth. Cold and logical reasoning, clear thoughts and good sense are not important to you: if there is no affective bond with your environment, no connection can be established with the Venusian that you are, and nothing happens.

You have a strong artistic side, and you never neglect subjective but clear concepts such as pleasure, beauty, and also sensuality. However, sometimes to the detriment of efficiency, durability, logic, and... detachment.

Your Dominant Signs



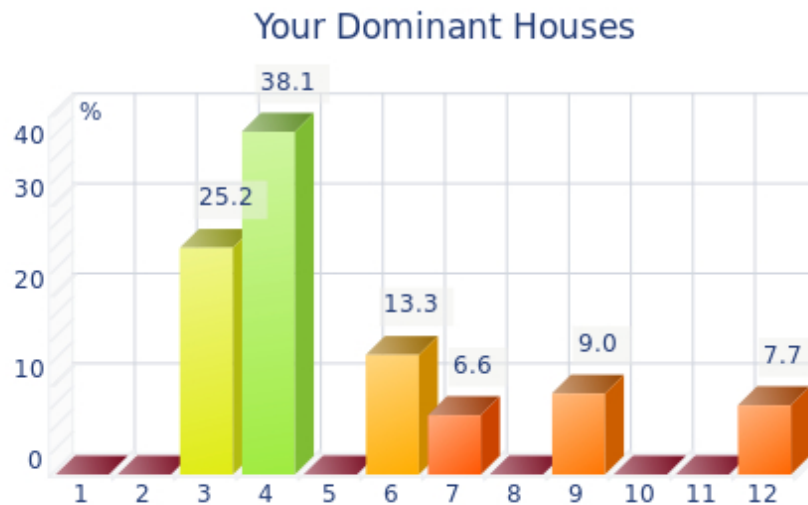
In your natal chart, the three most important signs, delineated according to the above-mentioned criteria, are, in decreasing order of strength, Leo, Virgo and Gemini. They are often prominent because your Ascendant and your Sun are posited there. However, it is not always the case: it may be because they are occupied by a cluster of planets, by a planet near an angle other than the Midheaven and the Ascendant, or because two or three planets are very active and form numerous aspects from these signs. Therefore, you partly take on the three signs' characteristics, which are somehow superimposed on your natal chart, and all the more so if any of the signs in question is highlighted.

With Leo as a dominant sign, you naturally shine brightly. Your dignity, your sense of honour, and your generosity can almost turn you into a solar mythological hero, a knight or a lord from the ancient times. People may blame you for your selfishness, your pride or your somewhat loud authority, but if you are self-confident, kind-hearted and strong-willed, it surely makes up for your little flaws, as long as they remain moderate...

Virgo, associated with perfectionism, numbers and reason, is among your dominant signs: you inherit its sense of responsibility and tidiness, a clear mind, an unfailing logic, as well as a need to be useful and to fulfil your task to the best of your abilities. Obviously, people may think that you are too modest or reserved, suspicious or pessimistic because of your exceedingly critical mind, but aren't logic and wisdom great qualities? Of course, they are. Moreover, you keep your feet on the ground, you never behave irrationally and you are helpful and hardworking - what more can you ask for?!

With Gemini as a dominant sign, your qualities include being lively, curious, mobile, clever, and flexible: you often make others dizzy, and you may come across as a dilettante - a bit inquisitive, shallow, and insensitive because you may be too intellectualizing. However, your natural curiosity, a nice quality, and

your quick humour, allow you to demonstrate to everyone how much they may gain from your company, and that your apparent flightiness hides an appetite (particularly mental) for life, which itself conceals a terrific charm!



Houses 4, 3 and 6 are the most tenanted ones in your natal chart. To compute their strength, planets and angles are weighed according to various astrological criteria such as swiftness, activity, angularity, rulership etc. From the analysis of the most tenanted Houses, the Astrologer deduces the fields of activity that are most relevant to you, be it because of what you are experiencing, or what you may experience in the future, or because of your deep inner motivations.

With an important 4th house in your chart, your private life, your intimacy, as well as your family and home, play a fundamental role. Your security and your family unit, the one you come from, but also the one you set up when you get married and start a family - or even as a bachelor living alone in your sweet home - are necessary for you to blossom. According to the Tradition, your father may play an important role in your life.

As the 3rd house is one of the most important houses in your chart, communication plays a major role in your life or in your deep motivations: frequent short trips, open-mindedness - which may offset a lack of mutable signs for instance - listening, discussion, interest in learning, knowledge accumulation or long-term studies, etc., are all areas that greatly appeal to you and are part of your daily life.

Your 6th house is quite emphasized and indicates interest in work and daily occupations that take up a lot of your time: in analogy with Virgo, this house inclines towards perfectionism and training; somehow, you may be fulfilled through the process of being useful and investing your energy in your work. An environment appealing to you may be involved - your colleagues, for example - or a passion for one of these daily occupations. Medical positions or pets may play a role in your life; or ancillary love affairs too... These are a few possibilities indicated by an important 6th house.

Your Style, Behaviour, and Peculiarities

What is commonly known as "sign" indicates the position of the Sun in the Zodiac. The Sun highlights all the characteristics of the sign he tenants. According to astrology traditional rules, these characteristics are all the more pure and exact when the Sun is strong in the sign, or when the sign is particularly highlighted within the chart. Here, we indicate the pure characteristics of the sign but you must bear in mind that they may only shed a light on a particular aspect of your personality. Indeed, the sole sign of the Sun, or of the Ascendant, can never describe an astrological chart because it depends on the degree of strength of the said sign in your chart.

Another important point must be underlined. Contrary to the Ascendant, which clearly describes your appearance, your vitality, your physical constitution, your spontaneous behaviour and the image you project, your Sun sign describes your inner self, which you may not completely be aware of, and which may emerge gradually as you mature: it is about your inner personality that you reveal only to the members of your entourage whom you trust. The Sun sign is likely to be the final form of your personality, once it has evolved in line with the energies of the other parts of your chart, the beginning of which is seen in the Ascendant, your external "bark".

The Ascendant is one of the major components of your natal chart. It is the zodiacal sign that rises in the East at the very moment of your birth. To calculate it, it is therefore necessary to know your exact time of birth.

It provides with a wealth of information on your personality. It is one of the key features that allows the analysis of several parts of you, such as your appearance, your character as it is initially perceived and your immediate behaviour. It describes the external aspect of your personality which you always display, but it also describes your physical constitution in the long-term, in other words, your health.

Please be aware that, in spite of the importance of the Ascendant, the accuracy of its description depends on how strongly highlighted it is in your natal chart. We use the entire set of astrological rules to assess the strength of the Ascendant. In most cases, the Ascendant is as revealing as your "sign", i.e., the sign where the Sun is posited at the time of birth.

You were born under the sign of Virgo and your Ascendant is in Gemini

Before broaching the details of the meaning of your Sun and your Ascendant, as a preamble, we offer a brief generic interpretation of their combination in your chart:

Don't cogitate to the point that you get sick! The peculiarity that these two Mercurian signs have in common is that they are high-strung and tend to give precedence to their intellect over their emotions. The difference is that Virgo is analytical and fond of figures, whereas Gemini is curious and fond of letters. Despite your nervous disposition, you are quite rational, and you easily steer clear of subjective concepts dripping with mawkish feelings which do not match the reality. Your Gemini Ascendant gives you a spruce, playful and impish outward appearance. Your Virgo Sun strengthens your mental agility, which enables you to manage your relationships cleverly and to cope with the most various situations. This sign combination endows you with a sharp curiosity and urges you to look for as much information as possible about various topics, out of fun, but also in order to get a good command of the areas which

you are interested in. You are more level-headed and cautious than you seem to be, and you often keep your observations and your manias to yourself. Intellectual objectivity is actually second nature to you!

You were born with the Sun in Virgo

Psychologically speaking, your nature is nervous and secondary. Before you take action, you cautiously ponder over things and you review any possible alternative and reaction. You strive systematically to find the best possible response to any given problem. You are a perfectionist above all and you have no rest until you optimize a situation, in each and every area, be it professional, pragmatic, aesthetic or in pleasure. You do not accept spontaneity and, to fully enjoy life and go further, you consider that demanding the best is the least you can do, even though it is detrimental to the rough force associated with your instinct. The intellectual element intervenes before both the physical ones and your feelings: it is one of the essential clues to understanding your personality.

As you are born under this sign, you are cerebral, clear-sighted, focused on details and on numbers, analytic, serious, competent, reasonable, modest, tidy, organized, spruce, industrious, provident, honest, loyal, reserved, shy, helpful, willing to progress, talkative, perfectionist, logical, hardworking, tactful, patient, precise, concrete, spiritual. You can also be narrow-minded, calculating, irritating, petty, pernickety, hung up, anxious, cold, repressed or sarcastic.

In love, Sir, your inner self is different from what you seem to be: you are sensual and affectionate and you find it hard to show it because your nature is to be cautious, reserved and analytical. You think too much, which gives you a cold and distant look. However, it is a mask that you wear and take around with you. As soon as you feel in confidence, you become able to take off the mask and to reveal your true face. You are critical and perfectionist and you must be cautious enough to keep your comments to yourself, especially in this particular area.

In the fields of sex and affection, real confidence is an imperative pre-requisite. Otherwise, it is impossible for you to show your true self and to remove the mental screen that proves so efficient in other areas, but that is very burdensome and inhibiting in the private sphere.

When you manage to do so, you become a charming, sensual and endearing partner and you communicate easily thanks to Mercury who rules your sign.

You are loyal, organized, conformist, more suited for celibacy. But once you take your decision, you are quiet and tidy and you will bring up your children according to the best traditional principles.

Because Virgo is a dual sign, there may be two marriages, or there may be a love affair in parallel.

Your Ascendant is in Gemini

Your mobility is such that you are in every place where you are not expected. You spend lots of time asking questions and... answering them. Your curiosity and your quick-wittedness are insatiable. Your mind is in constant turmoil, hopping from one topic to another, solving problems, accumulating anecdotes and knowledge within a short range of time. Your mobility is mostly mental, it takes you afar and turns your daily life into a mosaic of intense and pleasant moments that are not necessarily related to one another...

As you are born under this sign, you are nervous, expressive, lively and adaptable, with a quick mind and a good sense of humour. You are bubbling, playful, sociable, clever, curious, whimsical, independent, intellectual, flexible, ingenious, fanciful, imaginative, charming, cerebral, and you are into everything. You may also be whimsical, unfocused, quirky, superficial, indiscreet, opportunist, unmindful, selfish, sarcastic or mercurial.

in love, Sir, you increase the number of your love affairs, probably because you do not want to give up your freedom too quickly. You are cerebral to the extent that games of seduction remain... a real game, where feelings and carnal pleasures are merely present.

Paradoxically, you are very charming and attractive but you are more interested in the game itself. Indeed, thrills of verbal joust, fun, the pleasure to communicate over and over again, remain the centres of your concerns.

You clearly prefer to be a bachelor because you appreciate its hustle and bustle: outings, exciting parties or a wide range of encounters etc. However, when you meet with your soul mate, you turn into a pleasant and charming partner, although you may not be around too often!

The ruler of your chart is in Leo

The ruler of the Ascendant, also referred to as the chart ruler, brings a few interesting nuances to the meanings provided by the Sun and the Ascendant. The sign in which the ruler of the Ascendant is posited fine-tunes the style of personality described by the Sun and the Ascendant. It may strengthen it if the sign is identical to either of them.

The ruler of the Ascendant, Tim Burton, is Mercury. In the sign of Leo, it may endow you with authority and a certain inclination for prestige. Generous and noble, you loathe pettiness. You are not aware that you sometimes irritate the members of your entourage because of your excessive pride or your self-centredness.

Aspects to your Ascendant

Several planets form an aspect with your Ascendant, Tim Burton. Therefore, in their specific way, they modify your behaviour and your personality, which do not take on the pure characteristics of your Gemini Ascendant only, but which are a blend of its characteristics with those of the said aspects.

★★★★☆ Sun square Ascendant, orb -2° 35'

There may be a contradiction between your will and your external appearance, Tim Burton, which slows down your natural spontaneity and in some circumstances, gives rise to doubts regarding your behaviour towards other people and the need to be true to your own beliefs. There is certainly nothing serious with this minor dissonance between the Sun and your Ascendant, only choices that are to be made, so as to remain in harmony with yourself.

★★★★☆ Pluto square Ascendant, orb -3° 05'

Pluto is in dissonance with your Ascendant, Tim Burton. You may be slightly aggressive and at the same time, mysterious or impossible to understand, to people's eyes. You are sensitive, instinctive, and you feel everything more deeply than anyone else. Be careful that this feature does not mark your behaviour with too unsociable a note. Indeed, it would be a pity since the forces at work within you can be easily

controlled and turned into assets if you care to stand back. Detecting other people's weaknesses is fine. But don't misuse this ability!

★★★★★ Moon trine Ascendant, orb 7° 05'

Your instinct seldom misleads you, as far as your external appearance is concerned, thanks to the Moon's soft aspect with your Ascendant, Tim Burton. You keep your emotions under rather good control, in instinctive and smooth ways.

★★★★★ Mercury square Ascendant, orb -7° 23'

Sometimes, you find it hard to behave the way you wish, Tim Burton. It is because of Mercury who is not really in phase with your Ascendant. You happen to dislike the way you communicate, either because you exceedingly intellectualise everything, or on the contrary, because you do not make the effort to thoroughly analyse the situation when you are with other people.

★★★★★ Neptune inconjunction Ascendant, orb -2° 38'

Neptune is in dissonance with your Ascendant, Tim Burton. You may have difficulties in controlling your emotions, and you tend to hesitate about the behaviour to adopt in society. In some circumstances, you distrust everyone, yourself and other people, without knowing the reason why. Keep your feet on the ground and do not allow your imagination to carry you too far away from sheer reality! No one nurtures bad intentions towards you. This is something you must realise if you do not want to get worked up about... nothing.

Your Sensitivity

Your sensitivity is withdrawn, Tim Burton: more than anyone, you tend to lock yourself in your ivory tower, as you are aware of a kind of superiority that may be real, though overrated. Your moods are not perceptible because you control them with a tight fist. It is difficult to know if you are happy or upset because you show nothing. You avoid situations which compel you to reveal your emotions because you are not demonstrative. Please, be aware that it is not your amorous behaviour that is being analyzed, but the daily expression of your sensitivity. You dread the crowd and you need calm, and even solitude, to feel comfortable. You are well-equipped to remain balanced in all circumstances, but it may prove beneficial if you progressively take a relaxed attitude and show more dedication, as you are worth it; it is easier for you to exteriorize your feelings when your projects or your ambitions justify that you do so. You do not practice gratuitous outpourings, particularly when you are with a group, because you are afraid to open up, as if you were on the defensive, without any reason most of the times.

Your emotions, Tim Burton, prompt you to experiment what is faraway and foreign to your roots. You are indeed attracted by the unknown or by what is different from you, and it is mainly abroad that you realize that your emotions are exalted or that your popularity is enhanced. Besides, it is likely that your wife is a foreigner or at least, that you meet with her abroad.

Women may play an important role for your philosophical or moral training, or for your quest of knowledge and expanded horizons.

★★★★☆ Moon square Jupiter, orb 0° 07'

When this aspect is not well integrated, there is a tendency to conceal your true nature and to cheat on your true self. Appearance, emphasis and games hide the essence of your aspirations and may trouble your intimate life. Despite your apparent joviality, it is often difficult for you to live in conformity with your inner demands. Actually, it is difficult for you to reconcile your social life with your private life. The former excludes the latter. To properly integrate this aspect, you must learn to harmonize your external attitudes (social and professional ones) with your daily rhythms. It implies that, when you are in a trustworthy situation such as your family or your home, you accept to behave differently from when you are in a larger context, exposed to social stress. You must neither ignore them, nor should you favour them.

★★★☆☆ Moon square Neptune, orb -4° 27'

This Moon-Neptune dissonance wonderfully turns on the poetic soul, the exhilaration of feelings and dreams... and disturbs your practical life, as well as the management of contingencies. You do not lack inspiration but your reasons of living may be beyond your entourage's understanding! Bohemian life is pleasant but it is probable that you experience muddled situations. Your aims are noble and your intentions are very good. But you may not have the will to turn them into reality. It is important that you are wary of artificial paradises: escaping in the imaginary is not necessarily the best solution for problem solving. You are in search of an inaccessible tranquillity and you tend to procrastinate chores. Nevertheless, facts remain present and you may see that non-interventionism can only increase your difficulties. You must put an end to this vicious let-go circle. This does not imply that you have to forsake your dreams or to repress your very rich sensitivity.

★★★★★ Moon trine Mars, orb -7° 43'

Your vivid imagination goes hand in hand with your desire to make your dream come true and to struggle, so as to remain true to yourself. You easily mobilize your energy and your resources. This harmonic Moon-Mars aspect indicates the will to keep your intimate balance under all circumstances. You thrive in action; you court danger, particularly when your regular environment is endangered. In the private sphere, you exhibit complete straightforwardness. This planetary configuration allows you to quickly get back on your feet within a new context. You adapt well to unprecedented situations. Your capacity to integrate events rapidly can only increase your adaptation abilities.

★★★★★ Sun bi-quintile Moon, orb 1° 3'

This aspect is a strong homogeneity factor: the image you project is in conformity with your real nature and does not upset your basic balance. This is probably the cause of your feeling at ease, your consistent behaviour and your determination to remain your true self, regardless of external pressures and whatever is expected from you. At best, your will and your sensitivity are in harmony, your unconscious abilities are mobilized and controlled by your conscious will, with no imbalance. However, it is important to avoid the traps of self-satisfaction that would be harmful to your real exchanges and would lock you up in comfortable and rigid schemes. It is possible to remain natural and yet, not be content with the sole well being of those who never cheat themselves.

Your Affectivity

In your chart, the Sun is in Virgo and Venus, in Leo. Your solar and Venusian signs agree as much as fire and water! The natural reserve of the Sun in Virgo reacts to the excited and burning character of Venus in Leo. The modesty of the former opposes the passion of the latter. This contradiction may be part of your richness but it does not facilitate the consistency of your attachments: when you love, when you give free rein to your desires and your affections, you are Leo... unyielding, passionate, demanding and extremist. You are conquering, too, even domineering. However, your Sun in Virgo does not feel too comfortable in this style. During your periods of defence and of withdrawal, love fever turns into a reasoned and organized retreat. Your behaviours may be paradoxical: you are sensitive to flatteries but you pretend to be indifferent. You are enthusiastic when your desire is aroused, but you project a more balanced, distant and discreet image. It is necessary that your partner feel the dormant volcano that is often hidden by your will to control. Without that will, you would lose all your landmarks. The adventure is wildly alluring, but you hesitate to play the game and to indulge in frenzy, absolute and destabilizing infatuations. When the configuration is well integrated, it allows you to master various styles and to experience devouring passions... without being devoured!

You are so proud and generous, Tim Burton, that the power of your love contains in itself your vulnerability. However, this is precisely what makes you charming and original. You are loyal and straightforward and you need to love as much as you need to be loved. Both feelings are tightly linked and there is a real danger that love is broken up by trivial misunderstandings, just because your touchiness is affected. You are demonstrative, brilliant, and even dramatic, with a legendary generosity. For you, everything is, or must be, excessive: gestures of love towards your partner, your presents, your comfort and the luxury, which marks your outings and your travels. You are physically a lion, at least, you have its sexual appetite; you are voluptuous and passionate. Flexibility is the only thing that is out of your reach, in the ways you show your love, as well as in your responses to annoying events.

With such a configuration, Tim Burton, you are inclined to scattering regarding the expression of your feelings which can easily get carried away in your multiple relationships or within your surroundings. The medium to express your feelings often consists in shared interests for cultural, journalistic or scientific knowledge and frequent short trips. In a way, they lead you to open up more easily, may be because you want to ensure that you don't commit yourself more seriously than you really wish to. Correspondences are high on your agenda, ranging from exchanging letters, via the Internet - oh virtuality...! - to telephone talks. Indeed, you tremendously enjoy communicating in this superficial and a bit distant fashion where you know best how to open up and blend love and friendship without asking yourself too many questions. You are sometimes a SMS champion, always happy with changes and thoughtlessness. For you, undertaking a sole commitment is near to impossible....

★★★★★ Venus conjunction Uranus, orb 0° 47'

Your charm lies in the originality of your approach to love and in your uncompromising attitudes. Your motto? Freedom of love, whatever the price! Should your sentimental life become dull, you find a solution: you are romantic and you reinvent your couple's life, you give a new and unexpected momentum to your emotions. You create the kind sharpness that contributes to your exceptional affective life. You do not fear love at first sight or blazing passions. On the affective plane, you know where you are heading for, whom you love ... or love not. There is an indisputable intransigence. The heart impulses are irrevocable and implacable. You dream of a sentimental life that fulfils your aspirations and you use all possible means to achieve your ideal. Even though you may have to make the necessary sacrifices.

★★★★★ Venus trine Saturn, orb 6° 36'

You favour deep feelings and a sincere affective life. In love, you are not content with shams or uncertain compromises. Your couple's relationship is based on mutual trust. You strive to build a lasting link, a true love that complies with your aspirations and your heart of hearts. This harmonious Venus-Saturn aspect indicates wisdom. Inexpressible truth is preferred to appearances. A love affair is an adventure, above all. Discovering the other one, step by step... any relationship takes a fundamental dimension right away. It is relevant to mention a little puff of romanticism and a passionate nature, although quite modest and reserved. You do not commit yourself thoughtlessly! This is a major asset for long lasting love. You are able to question your affective behaviour and to adjust to your significant other. You handle crises quite well and you overcome all the difficulties inherent to amorous rapports.

The Way You Take Action and Your Sexuality

Tim Burton, the way you take action gains in power and in precision what it loses in rapidity and spontaneity. You are "slow", certainly. But when you get started, you put all your ingenuity and your persistence into it and you love to see a job well done. At the end of the day, owing to your ways, you are the winner. In your sex life, similarly, you are generous and instinctive and your slowness is not an obstacle. It may even bring fulfilment to you, but above all, to your partner! In love, as well as in your exchanges in general, you tend to keep your worries to yourself because you are extremely patient; you don't say anything, you stand all the hits and one day, you explode into outbursts of anger that are as violent as they are rare, thanks God.

As strange as it may seem, Tim Burton, to you, action means behind the scenes and secrecy. The form of your action is important, as compared to what you actually do. You want no publicity on what you are

doing and the reasons of your struggle!

You loathe being seen when you are on the move. You have the uncomfortable feeling that you are spied upon, that people may judge you. Or you are afraid to displease others. You enjoy taking action in the dark. You may be dedicated to charitable causes, and it is natural to you that you must focus your energy on them.

Humanitarian works, secret settings (hospitals, prisons, convents, etc.), remote and forgotten places (charity missions operating abroad, etc.) constitute privileged settings for the expression of your capacity for action (and for devotion), that is as strong as anybody else's, although it is marked by these quite peculiar characteristics.

Struggles may crop up in the guise of hidden pitfalls and enemies: you may have to fight in some secret ways, in order to face these dark events. It is an art which you master quickly and which enables you to triumph over adversity, more often than not.

★★★★★ Mars inconjunction Saturn, orb 1° 12'

Why should you take action? And how? The surrounding world is not to be trusted. Past events have taught you to question simple situations and to intervene after thorough consideration. You are vulnerable to the traps of life, to confrontations and struggles. You may complicate your behaviour at will, often missing your target due to your self-censoring. Your interventions may lack spontaneity. You must overcome your doubts and acquire the certainty that you are able to handle realities and facts. If you make that effort, you can understand that there are many ways to make life simpler for yourself.

★★★★★ Mars square Uranus, orb -7° 01'

This Uranus-Mars dissonance indicates frequent commotions. Your actions may be foolhardy and thoughtless. You may not control your temper and you let impulsiveness take over logics. This brings about drastic, whimsical or untimely decisions. There is no monotony in your life: thunders and tyrannical behaviour are on the agenda! Your fighting spirit certainly allows you to cope with life hardships. Nevertheless, beware of damages. As one wants to act as a hero, one can make mistakes. Because forces are overestimated or because inflexibility forbids compromise solutions. Therefore, it is important to balance your decisions and to avoid solutions that are as final as inappropriate.

Your Intellect and Your Communication Style

Your intellectual and nervous energy is considerable, Tim Burton, with good concentration abilities and a strong determination. You have plenty of planning and organization skills and enthusiasm. Your helpfulness is deep and you never hesitate to solve other people's problems. You are thought of as a reliable person and you enjoy it very much. You believe in your own capacities and you tend to speak with a dramatic pomposity because you want to attract attention. People who do not share your opinion are in trouble! Your determination is strongest and you may show stubbornness and inflexibility because you do not easily accept it when your ideas or your actions are criticized. Some people believe that you assert yourself in an authoritarian and condescending way, but you are not aware of it and therefore, you keep on thinking that you are right.

It is usually in the private sphere that you can communicate and think for your best interests, Tim Burton. Your family is very important to you, and your intellectual interests incline you towards real estate matters, asset management, family business, etc.

You may also work at home, and in any case, you are generally more outgoing when you are in a safe and private environment. When you are outside, you come across as unobtrusive, either because you don't pay much attention to events that are not directly related to you, or because you are just shy and on the defensive when it comes to worldly things or public domain.

★★★★★ Mercury conjunction Pluto, orb 4° 17'

Gullibility does not belong to the collection of your faults! You have a good grasp of human mechanisms and you easily detect flaws, calculations and hidden motivations. Human relations are subtle, never black or white, always complex. You often speak in riddles or in negations and you prefer to use the ambiguous language of symbols rather than the simplistic clarity of words. In this way, you fuel your mystery. On the relationship plane, your strength lies in the delicate art of highlighting flaws, detecting what destabilizes the enemy or, on the contrary, identifying what is relevant to your friends. You are more interested in what is concealed than in what is openly said. More often than not, you exercise an indisputable clear-sightedness.

★★★★★ Mercury sextile Jupiter, orb 0° 1'

You display strong abilities for adaptation, social insertion and various learning capacities. You are credited with an acute sense of relations, probably because you can speak other people's language. You easily assimilate the most varied settings and your qualities are acknowledged. Your attitude and the words you use have the power to seduce and to convince your entourage. Diplomacy is an asset in your game. You are fit for negotiation and you seek compromise solutions. The only danger may be that sometimes, you too readily accept agreements that turn out to be less positive than foreseen, after a while. This is the other side of the coin for your exceptional flexibility and your unquestionable tact.

★★★★★ Sun conjunction Mercury, orb 4° 47'

You know how to play with your image, how to give multiple representations of yourself. A precious asset: you are sensitive to other people's opinion and you adapt yourself to the audience. Of course, there is a "show" side in your manner that may prevent perfect cohesion. But that's the other side of the coin, for an extraordinary capacity to discover. This aspect translates into an acute sense of observation, an intense desire to learn and to bring everything to light. You strive to be informed in many circumstances, to understand the machinery of the world surrounding you, particularly regarding all human topics. And you will change according to that information and the knowledge gained. You have the chameleon's adaptation powers. And its vulnerability, as well.

★★★☆☆ Moon inconjunction Mercury, orb 0° 17'

The Moon suggests relaxation, whereas Mercury implies a discoverer's mind. They both make sense and each one requires special attention, as they are sometimes upsetting. This Moon-Mercury aspect is likely to bring about nervousness or instability. Nervousness stems from the multiplication of the spots of interest and the perpetual restlessness of your mind, which prevents relaxation and well being from settling in. The outside world constantly appeals to your attention and you shift from one issue to another, to the detriment of your tranquillity. Therefore, it is important that you find the balance between two antinomial attitudes: letting-go versus curiosity, tranquillity versus communication. The new persons you meet with are not necessarily trustworthy and there is no certainty that the contact is

harmonious. It is important that you use both influences alternately.

★★★★★ Mercury sextile Neptune, orb 4° 44'

Your sense of psychology and of human intimate mechanisms is acutely developed. Your relations are nuanced, clever and guided by a good intuition of individuals. Without effort, you pick up what is at stake in relationships and in contacts. Your « sixth sense » inspires you and may take you into strange roads. On the relations' plane, there is an indisputable subtlety. You know what you should not say or, on the contrary, you naturally find the suitable words. Your natural and non-rational attitudes often prove right. The unknown fascinates you... Your curiosity for occultism and mystery is keen. Besides, life is a huge human enigma for you.

★★★★★ Mercury square Mars, orb 7° 26'

This Mercury-Mars dissonance brings about impulsiveness into relationships and contacts. Your sense of controversy and criticism leads to blunders and thoughtless actions. Your verbal violence may harm the efficiency of your actions. You certainly display your views without circumlocution. Your straightforwardness would be commendable if it did not cause those blunders that spoil many situations. It is important that you learn to control your decisions, to coordinate your mental abilities and your fieriness, so as to fully express the quickness of your mind and of your action. Learn to count to ten before you say anything, as it is an excellent exercise for you!

Your Goals, Motivations, Career, and Destiny

Your Sun is posited in the 4th House

Unless salient factors indicate otherwise, Tim Burton, your nature is not very extroverted and your tendency is to keep to yourself emotions that may run very deep. Your will prompts you to create some sort of security, or cocoon, around you.

You are deeply attached to your family and to your initial home. You need this cosy and warm atmosphere, your parents' love and your family security, and later you reproduce them in your adult's home. Such strong bonds with your family and your home benefit your self-assertion as they combine professional efforts with presence at home. Working at home is particularly suitable, as are, indirectly, professions related to genealogy or even more, to real estate, because you are comfortable with the security aspects of the places you visit.

Your father often plays a major role, possibly an excessive one, with the danger that he may smother your desire for freedom and autonomy and contribute to aggravate your already strong natural introversion.

You are what is called belated and it is mainly during the second part of your life that you can concretely and efficiently exercise your will. Your assets lie in your determination to build a stable and comfortable home. However, family conflicts may exist and you may quarrel with your father over authority matters or over your projects; later, you may even undergo this sort of troubles in your own home if you are not flexible enough.

The ruler of your chart is in the 4th House

The ruler of the Ascendant, also referred to as the chart ruler as explained in a previous chapter, is also posited in one of the twelve Houses of the chart. Just like the Sun in his House, the ruler of the Ascendant provides certain abilities, or it makes you appreciate more keenly certain areas of life.

The ruler of your Ascendant is in the same House as your Sun. This specific feature of your chart strengthens the Sun's characteristics previously delineated.

Aspects influencing your ambitions

Regarding your destiny or your career, the following aspects of your natal chart allow to fine-tune what has just been said above:

★★★★★ Sun conjunction Pluto, orb 0° 29'

This harmonious Sun-Pluto aspect indicates an exemplary clear-sighted mind. Without destabilizing your appearances or your personality mask, Pluto makes you aware of your subjective and questionable character, as well as of your manner. You never take yourself completely seriously. You have a good grasp of human nature's complex games, without gullibility, without excessive simplification. Because you can perceive hidden elements underlying any situation better than anyone else, you are acknowledged as perspicacious. This aspect allows you to distance yourself from difficult circumstances and to remain impassive when you must overcome pitfalls.

★★★★★ Uranus opposite Midheaven, orb -2° 12'

Uranus is in opposition to your Midheaven, Tim Burton. Strictly speaking, this is not a dissonance since it is at the same time a conjunction with your Imum Coeli which symbolises your roots, your family, the home where you were born, as well as the home you set up. Since he symbolises deep changes, Uranus brings about repeated and continuous changes in your private life. It does not mean changing partner, but home moving, new human environment, removals, dwelling in very different places, and experiencing unexpected lifestyles. These areas are the ones most affected by changes, which is not the case for the professional plane, although in some circumstances, both are linked of course.

★★★★★ Venus opposite Midheaven, orb -3'

Venus is in opposition to your Midheaven, Tim Burton. It is not strictly speaking a dissonance since at the same time, this aspect is also a conjunction with your Imum Coeli which symbolises your home, your roots, and your family. Thus, it is obvious that your charm and the way you express your feelings work better in private circles than in society. When you do not feel in security, you are quite reluctant to display warmth, which may give the impression that your career or your destiny is a bit in the background, compared to what it might be if you did not feel this vulnerability, which is incidentally quite nice...

★★★★★ Sun sextile Neptune, orb -0° 02'

This harmonious Sun-Neptune aspect indicates a highly developed intuition and clear-sightedness and sometimes, a sixth sense. Mental images or information drawn from the unconsciousness impress your mind. What was only a muddled feeling turns into certainty and deep conviction. You do not necessarily need to justify your attitudes: you take a decision because you feel that you have to do so, although you may not control the underlying logics. The danger is that you may follow fanciful or adventurous roads. Beliefs you cannot explain may prove wrong or over-optimistic. However, your intuition is seldom

misleading. One last comment: there is often a keen curiosity for the « bizarre » and the paranormal with this planetary aspect.

★★★★★ Mars square Midheaven, orb 4° 48'

Because Mars is in dissonance with your Midheaven, in some circumstances, you may feel misunderstood, Tim Burton. In society, you may even feel hostility towards you as you try to climb up the steps of your professional life, or when you strive to reach a higher social status. Your efforts may be resented. You must be twice as careful as you usually are and tone down your behaviour in order not to be rude to other people, even though from your viewpoint, and it is actually most often the case, it only has to do with misunderstandings or some eagerness on your part.

★★★★★ Saturn sextile Midheaven, orb -3° 36'

Thanks to this soft aspect between Saturn and your Midheaven, your long-term efforts and your perseverance are rewarded, and you gradually climb up the stairs of success. Time is your ally as far as your career and social destiny are concerned. Carry on the good work, and rest assured that your seriousness and your obstinacy are appreciated. They are instrumental in your success, especially during the second part of your life.

★★★★★ Sun sextile Jupiter, orb -4° 37'

This harmonious Sun-Jupiter aspect indicates an optimistic background that usually wins the entourage's adherence. It also suggests ambition and generosity and favours social integration and success. The desire to earn general consideration prompts you to display energy, joviality and benevolence. However, opportunism may be the other side of the coin. As you strive to win everyone's esteem, you may fall into disrepute. It is important that you remain clear-sighted so as to persistently pursue your long-term aims without believing that you should always « grab each and every opportunity ». However, this aspect remains an element of success because it allows you to adjust your objectives to the context, to whatever the situation offers or, on the contrary, to force your way through events and to achieve your ideals.

Your Assets and Your Part of Joviality

Tim Burton, seeking consensus and compromise, as well as moderation at any cost: these components are part of the natural qualities endowed by the position of the planet of Greater Fortune in your chart. It may also give you a very good taste and a charm that enhances the quality of your contacts, particularly regarding all your associations, professional ones as well as the most intimate ones, such as marriage.

For you, Tim Burton, nature's present is the luck of the devil that protects you against illnesses and brings about joie de vivre in your daily work. Therefore your health and your work environment are constant sources of satisfaction. Your value is duly appreciated, and you are popular and helpful.

The planet Jupiter symbolizes expansion, broadness and generosity. Jupiter is associated with the functions of synthesis, enthusiasm and optimism. In your natal chart, his house position is more important than his sign position because, like Saturn, Uranus, Neptune and Pluto, he is a slow planet. Many people born in the same period have Jupiter in the same sign. This is the reason why the sign occupied here is less meaningful than when it is occupied by the so-called fast planets, i.e. the Sun, the Moon, Mercury, Venus and Mars. Therefore, some caution is to be exercised as you read what follows.

Jupiter in Libra endows you with sociability, popularity and charm! You are very appreciated because your open-mindedness and your generosity naturally prompt you to compromise in all things: what is important to you is not to have the last word, but to reach an agreement with your entourage and to establish nice relationships with them. You are diplomatic and your sense of justice is expressed in a humanistic and benevolent way.

Your Serious Side

You thoroughly analyse and criticise the values of freedom, your desires for evasion, and your philosophical concepts. You have your feet firmly on the ground, and you prefer to progress on familiar grounds, step by step, but in depth.

Tim Burton, you have a natural reluctance to grant your trust. As a consequence, associations, union, and sharing with others are difficult for you. On the bright side, you are endowed with caution and wisdom.

You ought to tone down this attitude because it may turn against you in the long run. You may marry late or with a person much older than you. This does not imply unhappiness! It is in your interest to open up to others, although it is hard for you to do so. At the end of the day, your harvest benefits your destiny and your evolution alike.

The planet Saturn symbolizes contraction, effort, time, limitation and concentration. Saturn eliminates anything that is not authentic, sooner or later. It is impossible to cheat him as he gives an irresistible desire to form a coherent whole with oneself, in responsible and wise ways. He is the great purifier. He represents our limitations but also our truth. In your natal chart, the house position where Saturn is posited is more important than his sign position because, like Jupiter, Uranus, Neptune and Pluto, he is a slow planet. Many people born in the same period have Saturn in the same sign. This is the reason why the sign occupied here is less meaningful than when it is occupied by the so-called fast planets, i.e. the Sun, the Moon, Mercury, Venus and Mars. Therefore, some caution is to be exercised as you read what follows.

Saturn in Sagittarius limits your taste for exoticism and for rebellion. On the other hand, he strengthens your sense of responsibilities and your authority. You focus on what is concrete and real and you avoid venturing into unknown territories.

A Few Special Points

Your Uniqueness and Your Utopias

Your mind is agile, curious and mobile, and always on the lookout for things that are out of the ordinary. This stems from your interest in strange or original concepts, or in non-conformist people.

Your trips are unforeseen and you are often present where no one expects you. The only problem is that you may shock your entourage, at least, the most conventional persons, because this aspect of your

personality is undoubtedly quite endearing, provided that you do not exceed a certain level of eccentricity, whether in intensity or in volume!

Your Inspiration and Your Illusions

Your approach to daily life and your behaviour in your work environment are whimsical and abide by one single law: your mood or your feelings of the moment!

Although it may be detrimental to your own organization, it also endows you with qualities such as being easy-going, helpful, and ready to give assistance to those whom you perceive as nice persons.

Your health is quite fragile and, if the emotional sphere is unsatisfactory, you may transfer your moods to the physical plane and, for instance, you may be affected by allergies or problems difficult to identify.

Your Passion and Your Authority

In general, your childhood was under stress, for many different reasons. Your early life was not very easy, and you probably felt a deep anxiety for reasons... that were not always real.

In your intimate and private sphere, when you feel in confidence, you may be domineering and authoritarian, whereas in public, you never show this facet of your personality.

Your sensitivity is acute, and you may be affected by trivial things without ever displaying your hurt feelings. But as you mature, your finesse becomes an asset instead of an element of vulnerability.

Symbolically, according to the Tradition, your father was authoritarian or domineering. This is not always true, but this is how you perceived him when you were a child.

Your Isolated Planets

In general, the ten planets of the chart are connected to other planets by major or minor astrological aspects. It is owing to those ties that the planets' energies can manifest in the chart owner's personality and play out within safeguards according to a specific tonality.

It seldom happens that in a natal chart, a planet is totally disconnected from the nine other planets.

Astrologers have observed that when such a case occurs, the person feels the energy of the unsuspected planet in quite a singular way, very jerky and powerful at the same time. Thus, for instance, the famed astrologer Jean-Baptiste Morin de Villefranche wrote that "an unsuspected planet heralds that something strange or extraordinary will take place regarding the meanings of the house in which the said planet is posited" (source : l'astrologie selon Morin).

Rules for detecting an unsuspected planet: among all the testimonies that we have reviewed to this day, based on our experience, we tend to agree with American astrologer Janis Huntley who accepts seven aspects, which involve the zodiacal twelve sections of 30 degrees. The aspects to be considered are the

conjunction (0 degree, cooperation or tension), the semi-sextile (30 degrees), the sextile and the trine (60 and 120 degrees respectively, aspects of cooperation), the square and the opposition (90 and 180 degrees respectively, tensed aspects), and the quincunx (150 degrees, slightly tensed). In this detection, the chart's angles are not taken into account.

In any case, it is important to remember that an isolated planet clearly expresses its influence when it is a personal planet. Thus, when the Sun, the Moon, Mercury, Venus, or Mars is isolated, it is certain that the effects described by Jean-Baptiste Morin de Villefranche will become manifest. As for Jupiter, Saturn, Uranus, Neptune, and Pluto, one must be cautious because the volume of cases documented is not yet large enough.

Your chart has no isolated planet, and this particular case does not apply to you.

Annex 1: Your Minor Dominants

The five following dominants are less significant than those described at the beginning of your report. They may not be strongly felt. In some cases, they add several minor details to the analysis of your character, but they are rather for curiosity purposes. It is not necessary to take them into account when you first read your portrait.

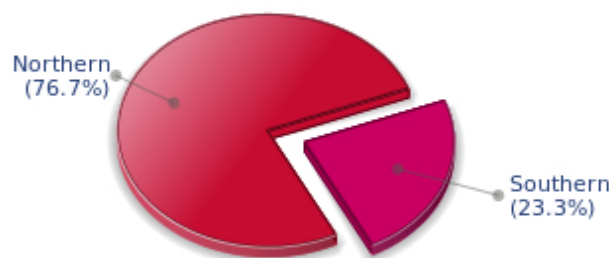
Your Planetary Repartitions: Northern, Southern, Eastern and Western Hemispheres

The axis linking the 1st house's cuspid (the Ascendant) to the 7th house's cuspid - the Descendant - divides the zodiac into two bowls, a superior bowl, in the South, and an inferior bowl in the North. Quoting an expression by the famous American astrologer Rudhyar, the Southern part and the Northern part correspond to two functions: "being" and "doing". Other concepts are also associated with this North and South distribution, such as introversion - Northern hemisphere - and extraversion - Southern hemisphere - being or appearances, inner life or external life, reflection or action, dreaming one's life or living one's dreams, the abstract or the concrete, backstage or limelight.

This is not about determination but about personal inclination: thus, some people will be thrown into public life despite a prominent Northern hemisphere. If this happens, however, it will not be due to their will, their taste or their deep nature. Conversely, a prominent Southern hemisphere will not bring about a famous destiny to its owner, even if he tends to turn the spotlight on himself, or if he looks for a more active life. It is a matter of deep nature and natural inclination. Of course, none of the typologies is "superior" to another.

In your birth chart, Tim Burton, the ten main planets are distributed as follows:

Your Northern and Southern Hemispheres



Tim Burton, the predominance of planets in the Northern hemisphere prompts you to reflect and imagine rather than to exteriorize your actions and to be at the forefront of the stage. So, should you wish to remedy this situation, it is up to you to force your nature to take action in broad daylight, to communicate, and to assert yourself... then, you can move forward in this concrete life and enjoy your newly won situation.

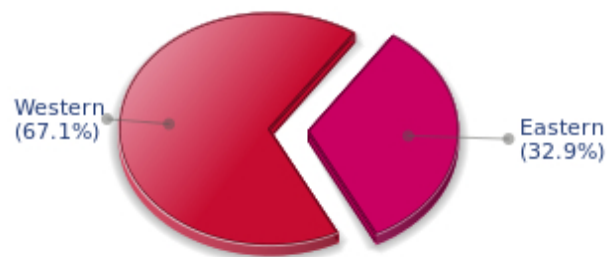
The birth chart is divided into two other parts, Eastern and Western, by the axis linking the Midheaven

to the Imum Coeli.

The Eastern part, on the Ascendant side, shows the person's ego, will, magnetism, and vitality, whereas the Western part, on the Descendant side, symbolizes other people, communication, relationships and their influence, as well as flexibility and adaptability.

Tim Burton, here is the planetary repartition in your Eastern and your Western hemispheres:

Your Eastern and Western Hemisphere:



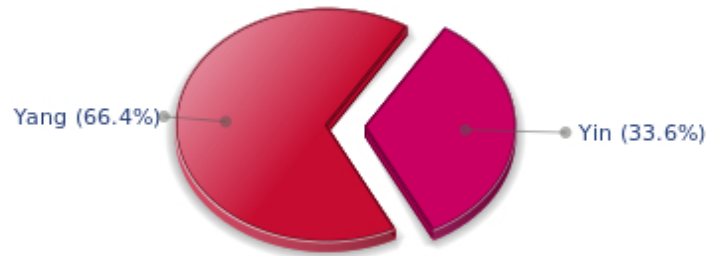
The predominance of planets in the Western hemisphere of your chart means that you are quite flexible, capable of empathy, convivial and communicative. An excellent factor for many professional activities or for your social or sentimental life for example.

A definite asset... provided that you are not at the centre of the decisions you must take in your life: you may be tempted to listen to the last person who spoke, and your flexibility won't always get you out of the tight spot. You are therefore advised to learn to decide alone and to cope with the consequences of your actions with courage and without regrets. This attitude will allow you to combine flexibility and action, adaptability and absence of hesitation.

Your Yin and Yang Polarity

The twelve signs are divided into two polarities, called active or passive, or sometimes masculine and feminine, positive and negative, Yang and Yin. This classification corresponds to two quite distinct tonalities, the first one bringing extraversion, action, self-confidence and dynamism, the second one, introversion, reactivity, reflection and caution. None is superior to the other, each group has its own assets and shortcomings. Odd signs - Aries, Gemini, Leo, Libra, Sagittarius and Aquarius - belong to the first group, whereas even signs - Taurus, Cancer, Virgo, Scorpio, Capricorn and Pisces - belong to the second group.

Your Yin and Yang Polarity



According to the disposition and qualities of your planets and angles, you are rather influenced by Yang energy, the active polarity, Tim Burton: more concerned about actions than reflection, you sometimes rush without standing back and without the deepness that is needed. However, your spontaneity prompts you to take fresh starts, even after repeated failures caused by your rashness.

Your Houses' Accentuations

Houses are split up into three groups: angular, succedent and cadent.

The first ones are the most important ones, the most "noticeable" and energetic houses. They are the 1st, 4th, 7th and 10th houses. Their cuspides correspond to four famous angles: Ascendant for the 1st house, Imum Coeli for the 4th house, Descendant, opposite the Ascendant, for the 7th house and Midheaven for the 10th house, opposite the Imum Coeli.

Planets are evaluated according to a whole set of criteria that includes comprehensive Western astrology rules. At their turn, planets emphasize specific types of houses, signs, repartitions etc., as previously explained.

Your Houses' Accentuations



Cadent houses, namely the 3rd, 6th, 9th and 12th houses, are very emphasized in your chart, Tim Burton.

They indicate important potential for communication, adaptability and flexibility. These houses are symbolically linked to the mind and intellect. The relative weakness implied by these characteristics indicates your tendency to hesitate or to be indecisive, but also your remarkable ability to start off again, which is a nice quality, finally: you can easily get yourself out of a tight spot thanks to your mobility and casualness, in the best sense of the term. This group of houses corresponds to evolutionary characteristics of your personality. However, they are only indications and you must include them in the rest of your chart in order to see whether they are validated or not!

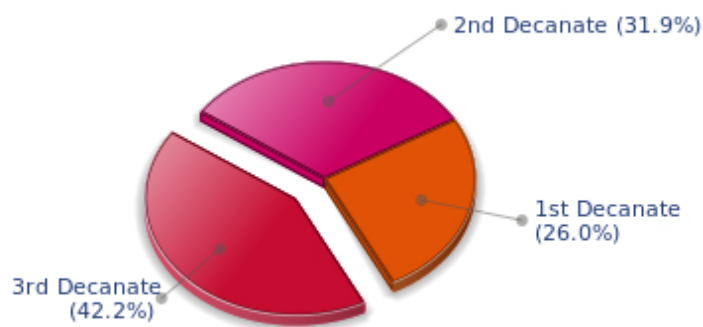
Your Esoteric Decanates

Each sign contains 30 degrees and can be divided into three equal parts: the decanates. The Tradition indicates that specific meanings can be associated to each of the three decanates. Their sphere of activity is usually limited to the Sun sign, however, it is even more interesting to observe the distribution of all the planets in the chart to get an idea of the respective importance of the three decanates, which can complement the description of the personality.

These meanings must be considered with the greatest caution. Indeed, they are minor characteristics that can only underline other outstanding traits of character.

Traditionally, the first decanate highlights the characteristics of the sign where a planet is located. The two other decanates correspond to sub-dominant planets, depending on the nature of each sign. This system leads to a multiplication of meanings and it is impossible to have a clear understanding: here, we prefer to give only the meaning of one decanate in comparison with the other two, within the birth chart as a whole. Again, the greatest caution is needed with regard to this minor indication as it is not always reliable: it is not essential that you read these texts in the beginning. You can get back to them later on, once you have read more important interpretations

Your Esoteric Decanates



The third decanate, which means the part between 20° and 30° of any zodiacal sign, prevails in your natal chart, Tim Burton. It contains the degrees of spirituality, traditionally more delicate to deal with, since they incline towards evolution and therefore, destabilizations. Individuals with an emphasised third decanate may have deeper sensitivity than most people, which often brings ordeals but also spiritual rewards.

Annex 2: Karmic Study

The karmic theme is a good complement to the psychological portrait, or natal chart. This analysis is based on the positions of the Lunar Nodes, the Black Moon and the Part of Fortune: they are also called fictitious points and describe the spiritual purpose of your destiny. Because there is in all of us an experience and a quest, our life is an evolutionary journey... provided that we head towards the right direction, of course! Indian astrologers highly prize the Nodes axis (North Node and South Node). It is the Ariadne's thread that we are invited to follow. The Black Moon indicates the sector where we are most likely to transform or to transcend, whereas the Part of Fortune points out the area where we can easily express our specificity.

The Lunar Nodes: a spiritual path

Lunar Nodes have their roots in the Indian tradition and they are based on a simple concept: each of us have a mission of their own, here on earth, a destiny, a course. According to the Indian philosophy, life is a school: the nodal axis describes our past experiences (South Node, our karma, our spiritual inheritance or our previous lives), and our aims on earth (North Node, our Dharma, the purpose of our current incarnation). This is the reason why the study of the lunar nodes is called "Karmic astrology". Here, we shall not step into hypothetical past lives. Wherever our current trends may come from, all that really matters is that we become aware of the purpose of our life, its finality and our dharma. We are likely to understand our life purpose around the age of 37, when the Lunar Nodes return to their natal position.

During the first part of your life, you manifested an acute sense of challenge, a taste for personal initiatives and an unfailing fighting spirit: these qualities prove helpful in handling any possible setback today. However, you must make an effort to accept your entourage and adopt more open and accommodating attitudes! Life teaches that you must become more sociable and develop the flexible behaviour that you lack. Do not play around with mavericks; It is important that you earn your close friends' affection and that you rely on their collaboration. You slowly become more aware of other people's reasons, of their desires and their concerns. Your destiny may be influenced by relationships. If you had a tendency to provoke people or events, now you have gained complementary qualities: diplomacy and human tact, cleverness in the art of reconciling opposite views. It is true that it required a huge personal effort!

A part of you is bohemian: you may shirk realities (at least during the first years of adulthood) and you keep your distance from the constraints of this world! However, life reminds you of them... As years go by, you show more pragmatism. Of course, you must keep your assets: a sharp intuition of people and things, a profitable detachment that allows you to cope with daily petty things. But you must also control the vagaries of life that may fall into the bad side of a "bohemian life" if you are not careful. The consequences may be setbacks and delusions that will cease only when you become aware of realities. As you progress, you may be a therapist who heals the body (a medical occupation)... or the soul because you are altruistic and you know how to listen.

Lilith or the Dark Moon

The Black Moon is the spark of refusal and distance that is dormant in all of us. Depending on the sign where she is found in your chart, she highlights the desire to transform and to sublimate a part of your life. The Black Moon is unfathomable and mysterious. She gives a different dimension to the sector she touches. Her manifestations are subtle; nonetheless, she is powerful, implacable, demanding to the extreme... The Black Moon is also called Lilith. She is the inner flame of your heroism and

insubordination.

Your refusals are irrevocable: you may show violence when the situation is stuck... When facts hamper your aspirations, when everything does not seem to start moving soon, you tend to force your ways through events, regardless of the price to be paid. Your strengths and your weaknesses stem from all that: you may exercise a misplaced extremism, claiming great causes, whereas order can be restored in the simplest of ways. However, better than anyone else, you know how to maintain the pressure whenever it is needed, when the desire for deep changes takes precedence over submission or abdication.

It is in the humanitarian field that rebellion is best expressed. Your dream is to become the spearhead for a different project of society, the Quixote of altruism. Each individual must be independent, really free to think and to act. Any hindrance to free will makes you indignant! The danger is that you may not tolerate any external constraint. This is probably the price to be paid for a freedom of thought that constitutes the core of your progression.

The Part of Fortune in House

The Part of Fortune is a very ancient fictitious point that depends on the lunar phase at the time of birth. The astrological house tenanted is particularly strengthened. In your chart, the Part of Fortune is in the 8th house: you need to constantly transform your life, to evolve and to shed your skin. You do not hesitate to regularly question the basis of your manner. Everything is death and revival and the wheel of life is ruthless: what was still yours yesterday will be a mere souvenir tomorrow... Your wealth is the know-how you demonstrate when you cope with changes imposed by events, while always remaining true to yourself.

Retrograde Planets

The karmic tradition insists on the issues related to the so-called retrograde planets. They are considered to be the inheritance of a past that was not well experienced, a sort of unfinished business. The interpretations of the retrogradation may seem negative or excessive to you. However, you may relate to a scenario that you have often and repeatedly experienced... as if you underwent several setbacks that all have the same cause. Until the day you become aware of it and you can free yourself from it! Through the slow integration of these planetary energies, you will be able to overcome your difficulties and to pay your karmic debt. Actually, each retrograde planet highlights an opportunity for evolution. Nothing can be achieved without the will to grow spiritually and to defeat your own demons.

The planet Mercury was retrograde on the day of your birth. You probably have to make an effort to harmonize your relations: you are prone to screen others with a critical eye and you do not overlook the slightest flaw. You are exceedingly clear-sighted and you approach your contemporaries with distance rather than with natural. This type of behaviour may be an asset: your enquiring and picky mind prevents you from being too gullible. However, your reservations may impede your communication. As time goes by, you learn to establish contacts more spontaneously. During your childhood, you faced problems of expression in your heart of hearts: your doubts prompted you to project an image that was out of touch with the reality... turbulent or withdrawn, you could hardly establish conventional ties. As an adult, you are in a better control of these elements. You still have to find the right way to tell who you really are: this is how you can improve your relationships.

N.B: modern astrology attaches less and less importance to the principles of retrograding planets.

Conclusion

A few remarks are needed here in order to allow you to fully take advantage of your astrological portrait: firstly, do not forget that a birth chart is also a photograph of the sky at birth and a structure that not only contains the personality's characteristics, but also its potential evolution.

We all know that, in real life, people begin to know themselves when they are in their forties, or even later. Likewise, several traits of character in a portrait may seem surprising: in most cases, it means that such features are not yet developed.

Some personalities reveal themselves late in life, whereas others are more precocious. It must be remembered that psychological structures are in a state of continuous evolution because they are influenced by unfolding events and gradual maturity. We can never underline strongly enough the "mobile" nature of the personality, throughout a lifetime.

On the other hand, it is difficult to discriminate what is "already present" at this moment in your life when you are reading your chart's interpretation, from what will appear later in the logic of your evolution: you must sort out all the pieces of information provided and, in most cases, you will see that your astrological portrait is helpful for your endeavours to know yourself better.

Finally, several readings of an astrological portrait are usually necessary in order to absorb all its different meanings and to evaluate the relevance of each character trait.

In any case, better self-knowledge obviously contributes to faster personal blossoming, and it is undoubtedly one of astrology's major roles: contributing to know oneself better, in order to improve more rapidly, to deal with one's weaknesses and to avoid its drawbacks, and to take advantage of one's assets as efficiently as possible.
