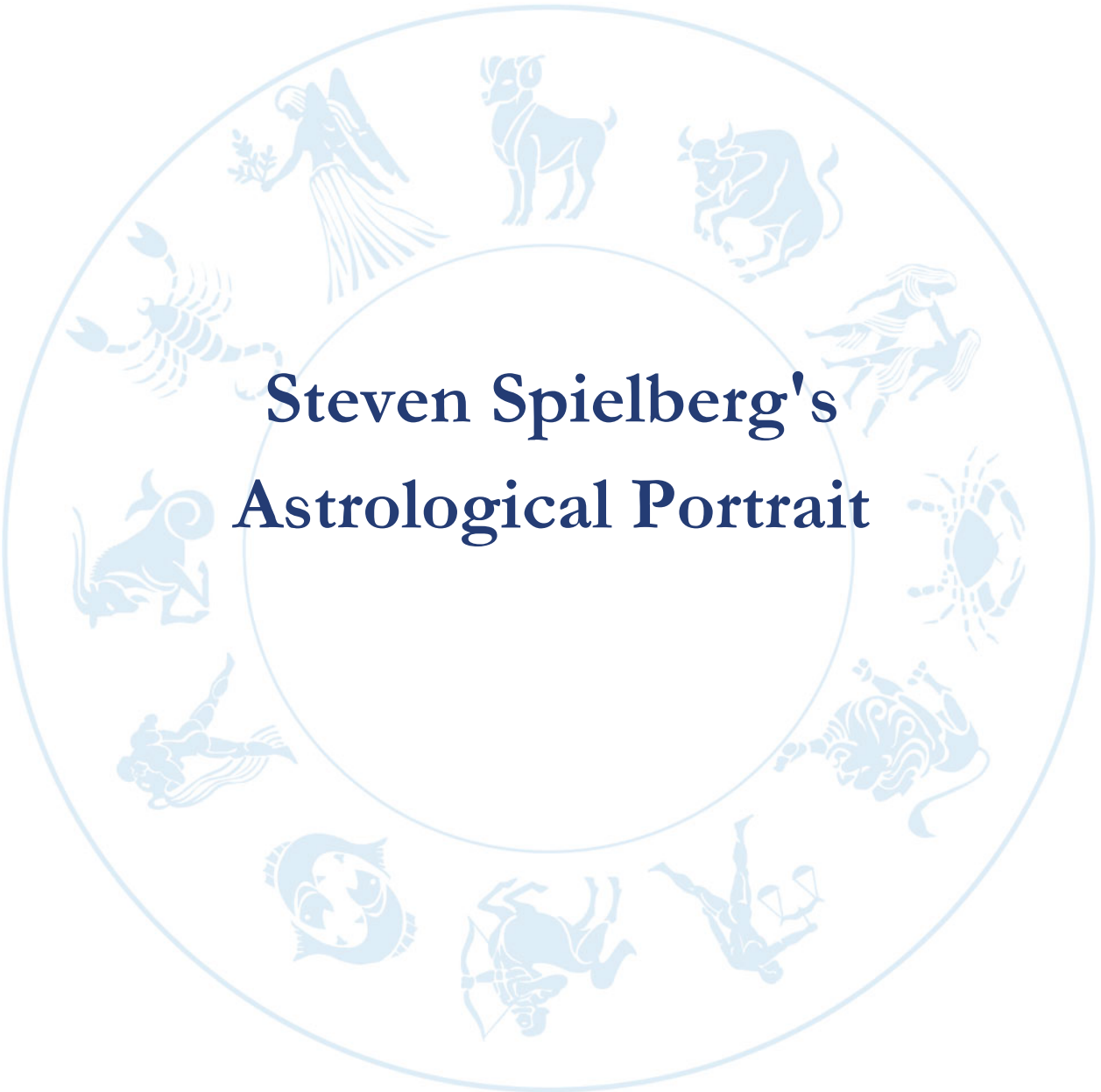




Steven Spielberg's Astrological Portrait





Steven Spielberg's Astrological Portrait



Introduction	2
Your Planets, Houses, Aspects, and Natal Chart	4
Preamble	7
Your Planetary Repartitions	8
Your Dominant Modes and Elements	9
Your Dominants: Planets, Signs and Houses	10
Your Style, Behaviour, and Peculiarities	14
Your Sensitivity	18
Your Affectivity	19
The Way You Take Action and Your Sexuality	21
Your Intellect and Your Communication Style	21
Your Goals, Motivations, Career, and Destiny	23
Your Assets and Your Part of Joviality	25
Your Serious Side	26
A Few Special Points	26
Your Isolated Planets	27
Annex 1: Your Minor Dominants	29
Annex 2: Karmic Study	33
Conclusion	36



Steven Spielberg's Astrological Portrait

Introduction

To fully benefit from this portrait, we suggest that you read its introduction and its preamble carefully, and then that to take the time to soak up the interpretations of each chapter. Given the large number of texts, which mirrors the human being's complexity, you may need to go through the contents several times, so as to get a good grasp of their meaning and to know yourself better. This will reward your patience.

The purpose of this report is to describe your psychological portrait and to highlight the most fundamental features on the personal area. The report begins with the analysis of your planetary dominants and outlines your personality's general traits before going into further detail. Minor dominants are analysed at the end of Annex 1, for purposes of clarity. Your report then delineates the various facets of your personality:

In general, even when relationships are not involved, we express ourselves and we feel according to our character and our personal motivations: this is indicated by the Ascendant and the Sun sign which both give details on the way we function. They shed a tremendously important light which allows to figure out your personality. Here, we describe your Sun sign (your inner self), your Ascendant (your behaviour as seen by others), and the ruler of the Ascendant (interesting additional pieces of information about the style of your personality). These descriptions alone cover nearly a third or a half of your psychological signature, depending on your natal chart characteristics.

Then, we address your sensitivity, or in other words, the way you receive things and how you express your emotions ; it works as a constant filter for all your exchanges, even when it becomes a more secondary element in your amorous relationship, because at that moment, affectivity prevails. Sensitivity is the way you perceive things, it is your radar, your daily mood, and at the same time, it indicates how you react to your entourage, on a daily basis. It is what others immediately see of you. In the second paragraph, we explain in which areas of life your sensitivity and your emotions are strongest, therefore, where you are most vulnerable.

After this, it is your affectivity, the way you love and how you charm, that comes into play as soon as you fall in love: the first part indicates its basic structure or its main form. The second part describes the areas where it is best expressed and how you display it, according to your personality.

A third fundamental area deals with your mode of action and your sexuality: how you behave, how you manage to obtain what you want, what kind of desires you have. There are twelve possibilities, very

different from one another. The study discloses the specific one that applies to you. In the second paragraph, we explain in which life areas you may most efficiently take advantage of your capacity for action and for conquest.

Your ways of communicating and of thinking are obviously among the major elements that must be integrated into the delineation and the description of your personality. Indeed, they influence your general behaviour and may modify or enhance the image your project (for instance, extraversion may “compensate” a weak affectivity, but a huge number of cases are possible). An additional chapter indicates the favourite areas where you enjoy communicating, thinking and meeting with people.

Besides, we analyze an even more personal aspect that is important to define and understand what may occur within your couple: each of us have a centre of interest, a privileged manner to be fulfilled or to achieve our destiny; this main motivation is indicated by the positions of your Sun and your chart ruler in the astrological houses and we provide you with its detailed description.

A natal chart contains the potential for specific fulfilment and a whole range of assets, protections and qualities. How does the lucky factor manifest in your personality? In which area can you best exploit your qualities? The answers are precisely revealed to you in this chapter.

On the other hand, we all feel in us a part of vulnerability, doubts and fears. How does this part of solemnity or serious side play out? How is it possible to handle it in order to evolve and to get rid of useless elements? All this information is provided to you in these two paragraphs.

Then, you can discover three additional traits of your personality that must be considered as secondary ones. They deal with your predispositions, which means that they need to be triggered by external events because they are not influenced by your will; let's call it a part of fate. Please, bear in mind that your destiny can unfold only in accordance with what you are: therefore, even if they belong to your more unconscious self, these characteristics are parts of you, definitely.

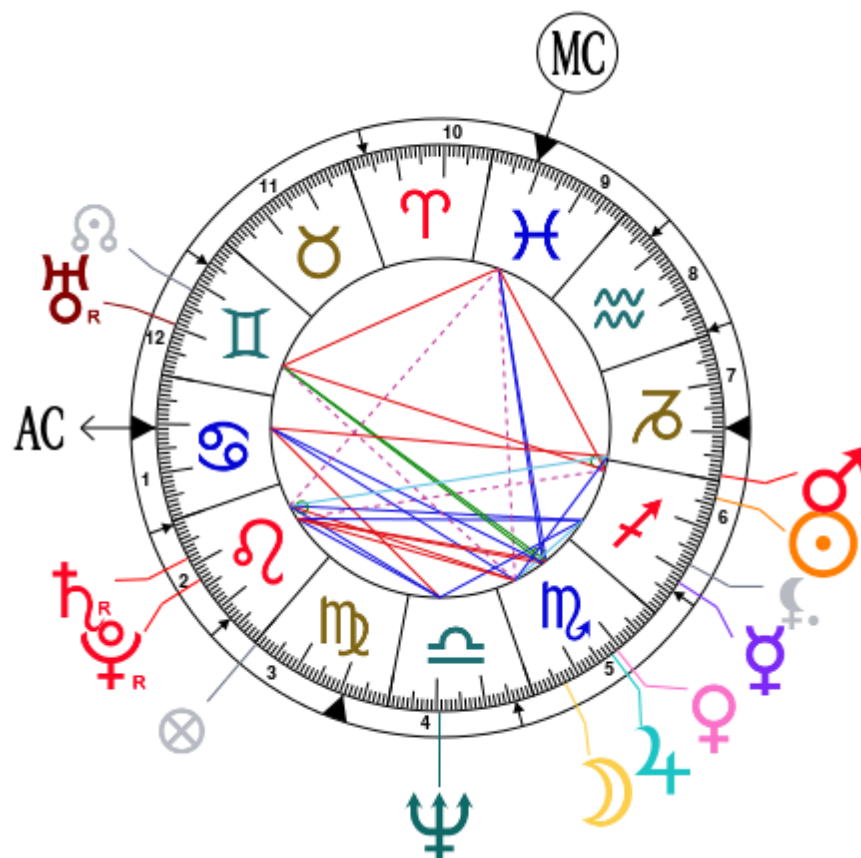
The karmic chart complements the psychological portrait or natal chart. It is based on the positions of the Lunar Nodes, the Black Moon, and the Part of Fortune. These elements of the chart, sometimes referred to as fictitious points, provide information about the spiritual meaning of your destiny. Owing to the fact that we all have in us acquired knowledge and the urge to go on a quest, our life is an evolutionary journey... However, these texts must be read with great caution: this is the reason why you will find this analysis in the Annex 2 of your report.

Your Planets, Houses, Aspects, and Natal Chart

Steven Spielberg, born December 18, 1946, at 06:16 PM, Cincinnati (Hamilton), Ohio [84.27W ; 39.09N ; 5W00]

Natal Planets				In House	Natal Houses (Placidus)			
☉ Sun	26°27'	♐ Sagittarius	House 6	House 1	10°48'	♋ Cancer		
☾ Moon	6°51'	♏ Scorpio	House 5	House 2	0°47'	♌ Leo		
☿ Mercury	7°48'	♐ Sagittarius	House 6	House 3	23°02'	♌ Leo		
♀ Venus	19°15'	♏ Scorpio	House 5	House 4	20°45'	♍ Virgo		
♂ Mars	1°09'	♐ Capricorn	House 6	House 5	26°12'	♎ Libra		
♃ Jupiter	17°56'	♏ Scorpio	House 5	House 6	5°44'	♐ Sagittarius		
♄ Saturn	8°09' R	♌ Leo	House 2	House 7	10°48'	♐ Capricorn		
♅ Uranus	19°29' R	♊ Gemini	House 12	House 8	0°47'	♒ Aquarius		
♆ Neptune	10°38'	♎ Libra	House 4	House 9	23°02'	♒ Aquarius		
♇ Pluto	13°07' R	♌ Leo	House 2	House 10	20°45'	♓ Pisces		
♁ Node	11°45'	♊ Gemini	House 12	House 11	26°12'	♈ Aries		
♇ Lilith	12°02'	♐ Sagittarius	House 6	House 12	5°44'	♊ Gemini		
AS AS	10°48'	♋ Cancer						
MC MC	20°45'	♓ Pisces						

In keeping with the common practice, we consider that a planet posited within 1 degree of the next house belongs to that house. We allow an orb of 2 degrees for the ASC and the MC.



List of Your Active Planetary Aspects

Please find below the list of all the active inter-aspects which are interpreted in this report, in addition to your planets in sign, in house, and all your planetary dominants. Since the aspects between slow-moving planets are of a collective nature, they are not displayed, in compliance with our interpretation rules.

- ★★★★★ Sun conjunction Mars, orb 4° 41'
- ★★★☆☆ Sun opposite Uranus, orb -6° 57'
- ★★★★☆ Sun sesqui-quadrate Pluto, orb -1° 39'
- ★★★☆☆ Sun square Midheaven, orb -5° 41'
- ★★★★★ Moon semi-sextile Mercury, orb 0° 57'
- ★★★★★ Moon sextile Mars, orb -5° 42'
- ★★★★★ Moon square Saturn, orb -1° 18'
- ★★★★☆ Moon sesqui-quadrate Uranus, orb 2° 21'
- ★★★★☆ Moon square Pluto, orb -6° 15'
- ★★★★★ Moon trine Ascendant, orb -3° 56'
- ★★★★★ Moon sesqui-quadrate Midheaven, orb -1° 05'
- ★★★★★ Mercury trine Saturn, orb -0° 21'
- ★★★★★ Mercury sextile Neptune, orb -2° 49'
- ★★★★★ Mercury trine Pluto, orb -5° 18'
- ★★★★★ Venus conjunction Jupiter, orb 1° 18'
- ★★★☆☆ Venus inconjunction Uranus, orb -0° 14'
- ★★★★☆ Venus square Pluto, orb 6° 08'
- ★★★★★ Venus trine Midheaven, orb 1° 3'
- ★★★★★ Mars bi-quintile Saturn, orb -1'
- ★★★★★ Mars opposite Ascendant, orb -9° 38'
- ★★★★★ Jupiter trine Ascendant, orb 7° 08'
- ★★★★★ Jupiter trine Midheaven, orb 2° 49'
- ★★★★☆ Saturn sesqui-quadrate Midheaven, orb 2° 24'
- ★★★★★ Uranus square Midheaven, orb -1° 16'
- ★★★★★ Neptune square Ascendant, orb -0° 09'

Meaning of Stars

Stars indicate the strength of the aspects. Two solid coloured stars (there are half-stars also), mean that the aspect is powerful enough to be noticed at the first reading.

We strongly advise that you read the paragraphs displaying less than two stars later on, after you have absorbed the full import of the other texts.

The yellow colour indicates a soothing and conciliating aspect, and the red colour, a dynamic and tense aspect. The red aspects enable you to evolve, to take action, and to learn to turn your "weaknesses" into assets through your life experiences. The yellow aspects are innate strengths on which you rely in order

to grow better with the former...

Preamble

When interpreting a natal chart, the best method is to start gradually from general features to specific ones. Thus, there is usually a plan to be followed, from the overall analysis of the chart and its structure, to the description of its different character traits.

In the first part, an overall analysis of the chart enables us to figure out the personality's main features and to emphasize several points that are confirmed or not in the detailed analysis: in any case, those general traits are taken into account. Human personality is an infinitely intricate entity and describing it is a complex task. Claiming to rapidly summarize it is illusory, although it does not mean that it is an impossible challenge. It is essential to read a natal chart several times in order to absorb all its different meanings and to grasp all this complexity. But the exercise is worthwhile.

In brief, a natal chart is composed of ten planets: two luminaries, the Sun and the Moon, three fast-moving or individual planets, Mercury, Venus and Mars, two slow-moving planets, Jupiter and Saturn, and three very slow-moving planets, Uranus, Neptune and Pluto. Additional secondary elements are: the Lunar Nodes, the Dark Moon or Lilith, Chiron and other minor objects. They are all posited on the Zodiac wheel consisting of twelve signs, from Aries to Pisces, and divided into twelve astrological houses.

The first step is to evaluate the importance of each planet. This is what we call identifying the dominant planets. This process obeys rules that depend on the astrologer's sensitivity and experience but it also has precise and steady bases: thus, we can take into account the parameters of a planet's activity (the number of active aspects a planet forms, the importance of each aspect according to its nature and its exactness), angularity parameters; (proximity to the four angles, Ascendant, Midheaven, Descendant and Imum Coeli or Nadir, all of them being evaluated numerically, according to the kind of angle and the planet-angle distance) and quality parameters (rulership, exaltation, exile and fall). Finally, other criteria such as the rulership of the Ascendant and the Midheaven etc. are important.

These different criteria allow a planet to be highlighted and lead to useful conclusions when interpreting the chart.

The overall chart analysis begins with the observation of three sorts of planetary distributions in the chart: Eastern or Western hemisphere, Northern or Southern hemisphere, and quadrants (North-eastern, North-western, South-eastern and South-western). These three distributions give a general tone in terms of introversion and extraversion, willpower, sociability, and behavioural predispositions.

Then, there are three additional distributions: elements (called triplicity since there are three groups of signs for each one) - Fire, Air, Earth and Water - corresponding to a character typology, modality (or quadruplicity with four groups of signs for each one) - Cardinal, Fixed and Mutable - and polarity (Yin and Yang).

There are three types of dominants: dominant planets, dominant signs and dominant houses. The novice thinks astrology means only "to be Aries" or sometimes, for example, "to be Aries Ascendant Virgo". It is actually far more complex. Although the Sun and the Ascendant alone may reveal a large part of the character - approximately a third or a half of your psychological signature, a person is neither "just the Sun" (called the sign) nor just "the first house" (the Ascendant). Thus, a particular planet's influence

may be significantly increased; a particular sign or house may contain a group of planets that will bring nuances and sometimes weaken the role of the Ascendant, of the Sun sign etc.

Lastly, there are two other criteria: accentuations (angular, succedent and cadent) which are a classification of astrological houses and types of decanates that are occupied (each sign is divided into three decanates of ten degrees each). They provide some additional informations.

These general character traits must not be taken literally; they are, somehow, preparing for the chart reading. They allow to understand the second part of the analysis, which is more detailed and precise. It focuses on every area of the personality and provides a synthesis of all the above-mentioned parameters according to sound hierarchical rules.

As explained in the introduction of your Psychological Portrait report, minor dominants are analysed at the end of Annex 1, for purposes of clarity.

Your Planetary Repartitions

Each quadrant is a combination of the four hemispheres of your birth chart and relates to a character typology. The Southern hemisphere – the top of your chart, around the Midheaven – is associated with extraversion, action, and public life, whereas the Northern hemisphere prompts to introversion, reflexion, and private life. The Eastern hemisphere – the left part, around the Ascendant – is linked to your ego and your willpower, whereas the Western hemisphere indicates how other people influence you, and how flexible you are when you make a decision.

Your Four Quadrants

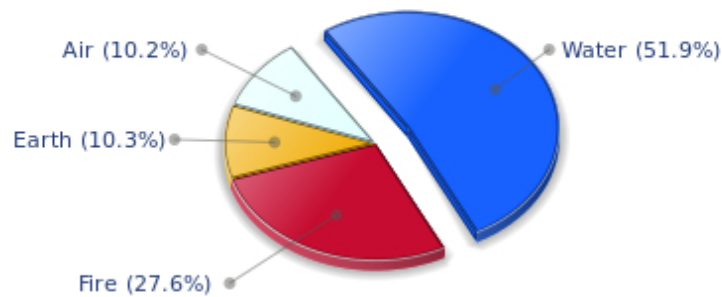


Steven Spielberg, the nocturnal North-western quadrant, consisting of the 4th, 5th and 6th houses, prevails in your chart: this sector favours creativity, conception and some sort of specialization or training, with helpfulness and relations as strong components. You need others' cooperation in order to work properly, although you are not very expansive: creating, innovating and thinking are what matter most to you because this self-expression enriches you and totally satisfies you.

Your Dominant Modes and Elements

Steven Spielberg, here are the graphs of your Elements and Modes, based on planets' position and angles in the twelve signs:

Your Four Elements

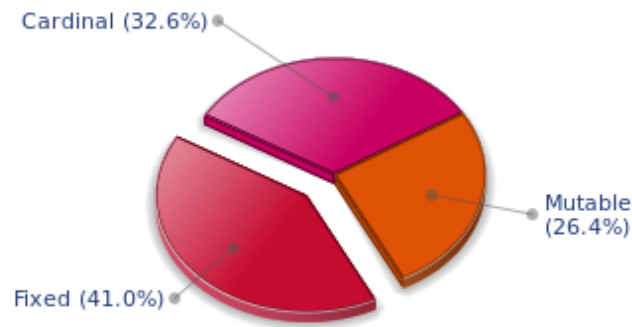


The predominance of Water signs indicates high sensitivity and elevation through feelings, Steven Spielberg. Your heart and your emotions are your driving forces, and you can't do anything on Earth if you don't feel a strong affective charge (as a matter of fact, the word "feeling" is essential in your psychology). You need to love in order to understand, and to feel in order to take action, which causes a certain vulnerability which you should fight against.

Steven Spielberg, Fire is dominant in your natal chart and endows you with intuition, energy, courage, self-confidence, and enthusiasm! You are inclined to be passionate, you assert your willpower, you move forward, and come hell or high water, you achieve your dreams and your goals. The relative weakness of this element is the difficulty to step back or a kind of boldness that may prompt you to do foolish things.

The twelve zodiacal signs are split up into three groups or modes, called quadruplicities, a learned word meaning only that these three groups include four signs. The Cardinal, Fixed and Mutable modes are more or less represented in your natal chart, depending on planets' positions and importance, and on angles in the twelve signs.

Your Modes



The Fixed mode corresponds to a majority of elements in your chart, Steven Spielberg, and represents the desire for security and durability: you are able to concretely appreciate a situation and its stability. You definitely prefer to play the role of a loyal, obstinate and hard-working person, rather than to try new and risky experiences - beware, however, not to confuse obstinacy with intransigence. You structure, cement, and strengthen everything you find on your way: it is your nature, although you are not especially interested in swiftness: slow and steady...

Your Dominants: Planets, Signs and Houses

The issue of dominant planets has existed since the mists of time in astrology: how nice it would be if a person could be described with a few words and one or several planets that would represent their character, without having to analyse such elements as rulerships, angularities, houses, etc!

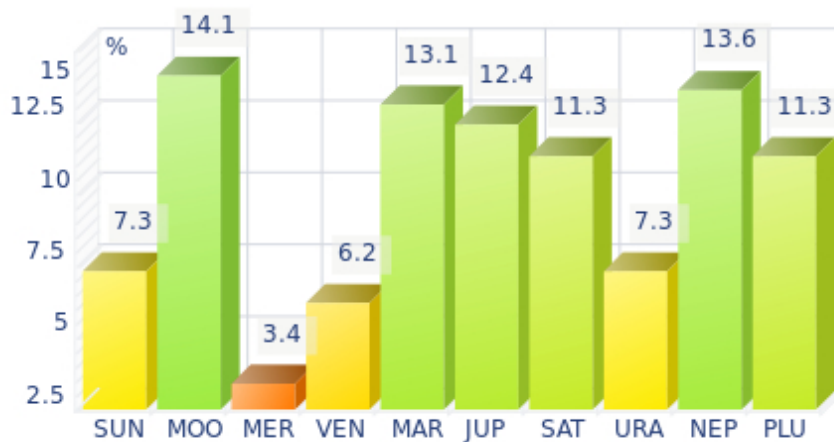
The ten planets - the Sun throughout Pluto - are a bit like ten characters in a role-play, each one has its own personality, its own way of acting, its own strengths and weaknesses. They actually represent a classification into ten distinct personalities, and astrologers have always tried to associate one or several dominant planets to a natal chart as well as dominant signs and houses.

Indeed, it is quite the same situation with signs and houses. If planets symbolize characters, signs represent hues - the mental, emotional and physical structures of an individual. The sign in which a planet is posited is like a character whose features are modified according to the place where he lives. In a chart, there are usually one, two or three highlighted signs that allow to rapidly describe its owner.

Regarding astrological houses, the principle is even simpler: the twelve houses correspond to twelve fields of life, and planets tenanted any given house increase that house's importance and highlight all relevant life departments: it may be marriage, work, friendship etc.

Steven Spielberg, here is the evaluation diagramme for your planets:

Your Dominant Planets



The three planets that are most highlighted in your chart are the Moon, Neptune and Mars.

The Moon is one of the most important planets in your chart and endows you with a receptive, emotive, and imaginative nature. You have an innate ability to instinctively absorb atmospheres and impressions that nurture you, and as a result, you are often dreaming your life away rather than actually living it.

One of the consequences of your spontaneity may turn into popularity, or even fame: the crowd is a living and complex entity, and it always appreciates truth and sincerity rather than calculation and total self-control.

As a Lunar character, you find it difficult to control yourself, you have to deal with your moods, and you must be careful not to stay passive in front of events: nothing is handed on a plate, and although your sensitivity is rich, even richer than most people's, you must make a move and spare some of your energy for... action!

With Neptune as one of your three dominant planets, you are a secretive and ambiguous person, often confused or unclear about your own motivations! Indeed, you are endowed with unlimited imagination and inspiration, as well as with an extreme sensibility that may turn you into a psychic or a clairvoyant. On the other hand, your impressionability is such that you may have difficulties in separating what is concrete and solid from illusions or dreams.

A mystic, a visionary or a poet, you daydream, like any Neptunian, and you see what few people only can see, all of this being shrouded in aesthetic mists when you are fired with enthusiasm.

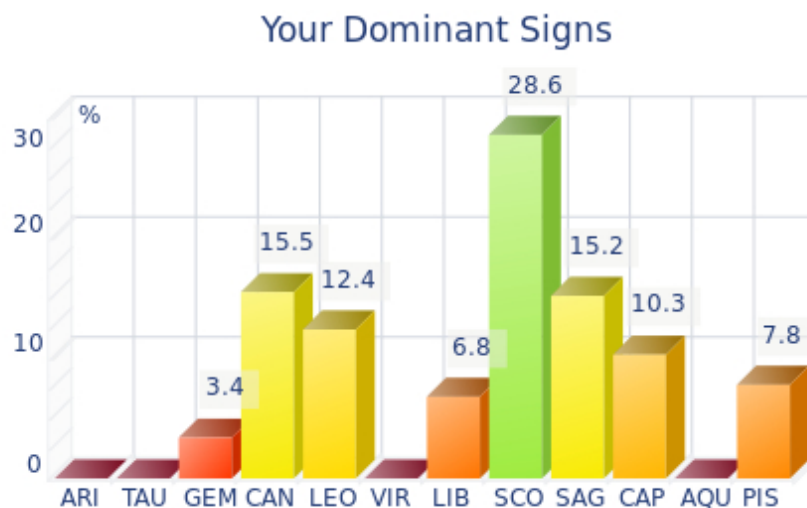
A boundless, infinity-loving man like you is inevitably likely to be more vulnerable and easily hurt because of your acute perception of events. In such cases, you are hit full in the face, and you may sink into gloomy daydreamings and dark melancholy.

That said, this mysterious aura definitely gives you an indefinable charm in the eyes of your close friends who are often fascinated by your unique ability to feel and to see what ordinary people can never see!

Mars is one of your dominant planets and provides you with its efficient energy and enthusiasm: with a

powerful Mars in your chart, action - but also will and ability to undertake - is not an empty word for you. You are active, dynamic, willing to fight, courageous, and you are never afraid to move mountains, even though risks are part of the adventures that you start with determination.

However, your patience is not always up to your boldness and a kind of feverishness, or even anger, can tarnish the quality of your achievements. That would be a pity since the Marsian is a champion in matters of efficiency! Mars symbolizes display of action, conquering spirit that favours discipline and order - beware of not being fussy - and lies at the frontier between action and brutality, between conquest and potential aggressiveness.



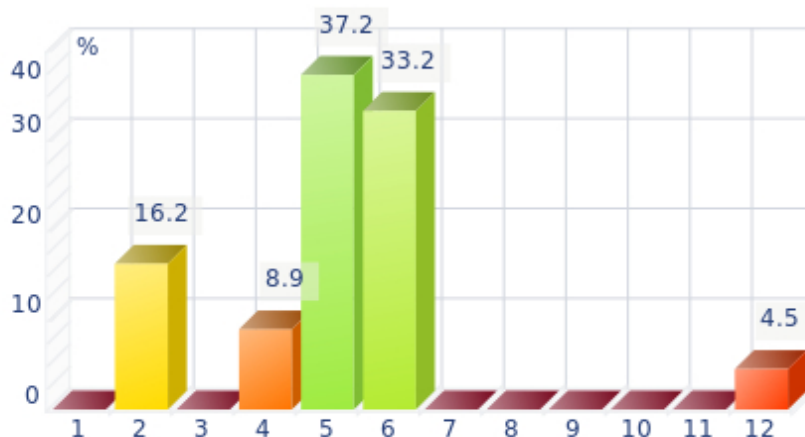
In your natal chart, the three most important signs, delineated according to the above-mentioned criteria, are, in decreasing order of strength, Scorpio, Cancer and Sagittarius. They are often prominent because your Ascendant and your Sun are posited there. However, it is not always the case: it may be because they are occupied by a cluster of planets, by a planet near an angle other than the Midheaven and the Ascendant, or because two or three planets are very active and form numerous aspects from these signs. Therefore, you partly take on the three signs' characteristics, which are somehow superimposed on your natal chart, and all the more so if any of the signs in question is highlighted.

With Scorpio as a dominant sign, you are a strong and astute person, complicated and passionate, sometimes destructive and intolerant, but strong-willed, tough and daring, sometimes bordering on aggressive. So many qualities and dangers combined in one person! Obviously, this often results in a natural selection of people around you: those who stand up to you or admire you and those who can't bear you anymore! But that is precisely what you want. You are what you are and you are not going to transform yourself just to please. You are too proud and you never dread confrontations, although your way of fighting is secret, like your nature that, mysteriously enough, you are so reluctant to reveal even to your close friends who will never understand you. That said... what a hellish charm you have!

Cancer is one of your dominant signs and endows you with imagination and exceptionally shrewd sensitivity. Although suspicious at first sight - and even at second...- as soon as you get familiar with people and let them win your confidence, your golden heart eventually shows up, despite your discretion and your desire for security that make you return into your shell at the slightest alert! Actually, you are a poet and if you are sometimes blamed for your nostalgia and your laziness, it is because your intense inner life is at full throttle...

Sagittarius, an adventurous and conquering fire sign, is dominant in your chart: you are enthusiastic, enterprising, optimistic, very sociable, and mobile - you have itchy feet, both physically and mentally. Nobody gets bored with you because you are always planning things and suggesting excursions, at least... when you are around and not already gone on a trip! Obviously, so many movements for one man may scare people off, and some of them may even criticize your brutality or your tendency to lose your temper, but you are so warm and genuine, so expansive, isn't this a good thing? And all the more so, since your sense of humour is overwhelming...

Your Dominant Houses



Houses 5, 6 and 2 are the most tenanted ones in your natal chart. To compute their strength, planets and angles are weighed according to various astrological criteria such as swiftness, activity, angularity, rulership etc. From the analysis of the most tenanted Houses, the Astrologer deduces the fields of activity that are most relevant to you, be it because of what you are experiencing, or what you may experience in the future, or because of your deep inner motivations.

The 5th house is one of your dominant houses: hobbies, love life, sports, and games, including speculation and all kinds of entertainment, are fields that you actually take seriously! On a more subtle level, artistic creation as well as other forms of creation - including begetting children - could be one of your assets. You gain from taking part in leisure associations and various activity clubs in which a catchword resounds more than for most people: pleasure.

Your 6th house is quite emphasized and indicates interest in work and daily occupations that take up a lot of your time: in analogy with Virgo, this house inclines towards perfectionism and training; somehow, you may be fulfilled through the process of being useful and investing your energy in your work. An environment appealing to you may be involved - your colleagues, for example - or a passion for one of these daily occupations. Medical positions or pets may play a role in your life; or ancillary love affairs too... These are a few possibilities indicated by an important 6th house.

The 2nd house is among your three most tenanted houses: life's material aspects - with everything that is implied in terms of security, appetite for life, desire for possession - are deep-seated and you can never be content with living on love and fresh air. On a more abstract level, you may have similar feelings regarding relationships: possessiveness and jealousy in the worst cases, but also faithfulness and durability.

Your Style, Behaviour, and Peculiarities

What is commonly known as "sign" indicates the position of the Sun in the Zodiac. The Sun highlights all the characteristics of the sign he tenants. According to astrology traditional rules, these characteristics are all the more pure and exact when the Sun is strong in the sign, or when the sign is particularly highlighted within the chart. Here, we indicate the pure characteristics of the sign but you must bear in mind that they may only shed a light on a particular aspect of your personality. Indeed, the sole sign of the Sun, or of the Ascendant, can never describe an astrological chart because it depends on the degree of strength of the said sign in your chart.

Another important point must be underlined. Contrary to the Ascendant, which clearly describes your appearance, your vitality, your physical constitution, your spontaneous behaviour and the image you project, your Sun sign describes your inner self, which you may not completely be aware of, and which may emerge gradually as you mature: it is about your inner personality that you reveal only to the members of your entourage whom you trust. The Sun sign is likely to be the final form of your personality, once it has evolved in line with the energies of the other parts of your chart, the beginning of which is seen in the Ascendant, your external "bark".

The Ascendant is one of the major components of your natal chart. It is the zodiacal sign that rises in the East at the very moment of your birth. To calculate it, it is therefore necessary to know your exact time of birth.

It provides with a wealth of information on your personality. It is one of the key features that allows the analysis of several parts of you, such as your appearance, your character as it is initially perceived and your immediate behaviour. It describes the external aspect of your personality which you always display, but it also describes your physical constitution in the long-term, in other words, your health.

Please be aware that, in spite of the importance of the Ascendant, the accuracy of its description depends on how strongly highlighted it is in your natal chart. We use the entire set of astrological rules to assess the strength of the Ascendant. In most cases, the Ascendant is as revealing as your "sign", i.e., the sign where the Sun is posited at the time of birth.

You were born under the sign of Sagittarius and your Ascendant is in Cancer

Before broaching the details of the meaning of your Sun and your Ascendant, as a preamble, we offer a brief generic interpretation of their combination in your chart:

These two very different signs are inspired by the same wandering spirit, and they blend together to endow you with a strong inclination for escaping through actual trips but also through your imagination! Owing to your Cancer Ascendant, you come across as a calm and careful person at first glance. The truth is that you protect your private sphere so as not to get lost in the frenzy and short-lived relationships which you deem a threat to your tranquillity. However, since you excel in contradictions, you deplore your propensity to beware of all things which are unknown to you. Indeed, your thirst for discoveries and your craving for the exploration of the immense world are the signature of your Sagittarius Sun. You are deeply attracted to that which is different from you, and once you become used to it, you display an amazingly broad mind which is sometimes accompanied by uncalled for enthusiasm and ardour. Both

Sagittarius and Cancer are often wrapped up in their thoughts. Cancer is deeply attached to its fortress and is easily moved by its imagination, which opens the road to roaming all over a world, far from the reality of daily life. Since Sagittarius is more fiery and mobile, it gives you itchy feet and urges you to go out to meet the outer world.

You were born with the Sun in Sagittarius

Psychologically speaking, your nature is extroverted and independent, oriented towards expansion and sociability. You have the soul of a leader, energetic and active. Your charisma and your drive are fully integrated into the collective life. Indeed, as an action-oriented fire sign, you challenge yourself and you succeed in accomplishing the task straight away. Sagittarius is hard to follow because his spirit and his independent mind constantly prompt him to go further and higher.

As you are born under this sign, you are charismatic, fiery, energetic, likeable, benevolent, tidy, jovial, optimistic, extroverted, amusing, straightforward, demonstrative, charming, independent, adventurous, straightforward, bold, exuberant, freedom-loving. But you may also be irascible, selfish, authoritarian, inconsistent, unfaithful, brutal, unreliable, reckless, tactless or unpleasant.

In love, Sir, you are the mobile fire that consumes everything in your way. You are constantly in love, you are passionate and your energy and your extroversion create a love life that could fit a serialized novel: mobile and changing, you are not the man of a single woman, at least until you find the person who resists you and who arouses a love powerful enough to tame you.

Your need for freedom and independence is so strong that it is difficult for you to settle down. Many break-ups are caused by a feeling of smothering, when your love of the moment becomes too demanding. However, since you are also unstable, you often patch up as if nothing had happened and you will be forgiven: this paradox comes from your explosive mixture comprising ardour, energy, benevolence and fickleness.

Similarly to the way in which you run your business, you will settle down when you reach your forties or your fifties. You become a good husband and a good father, well acquainted with the rules of your society, full of contentment and joy. Your home will provide the room you need so that you do not feel imprisoned.

Your Ascendant is in Cancer

Psychologically speaking, your nature is dreamy, oriented towards nostalgia for things past. You are very instinctive and you protect yourself against the outside world. Your inner life is rich, with fertile and even unlimited imagination, a propensity to avoid unnecessary risks and to pursue security. You show your true face only to persons you can trust, when there is a kind of well being triggered by the nostalgia for the past.

As you are born under this sign, you are emotional, sentimental, restful, imaginative, sensitive, loyal, enduring, protective, vulnerable, generous, romantic, tender, poetic, maternal, dreamy, indolent, greedy and dedicated. You may also be fearful, unrealistic, evasive, passive, touchy, anxious, dependent, stubborn, lunatic, backward-looking, lazy, burdensome, impenetrable and a homebody.

Love in the masculine mode: for you, Sir, in love, you are tender, sensitive and quite loyal. You are

influenced by a mother-figure and you unconsciously look for a partner who will offer as much attention and affection as you used to receive as a child. You are a homebody and a dreamer and you blossom in the family cocoon you create, dreaming of adventures and extraordinary trips... that you most often take in your head.

Tenderness is more important than sexuality, even though it is also an agent for security and for stability. You tremendously appreciate to be again the spoiled child that you used to be, as you savour tasty little dishes or as you receive the frequent praises you need in order to feel reassured.

You are sheltered from tragedies and life complications because at the very moment when a difficult situation emerges, you nip it in the bud either by ignoring it or by withdrawing into your shell quietly, until the storm subsides.

Your home is happy and rich, quiet and harmonious, throughout your life.

The ruler of your chart is in Scorpio

The ruler of the Ascendant, also referred to as the chart ruler, brings a few interesting nuances to the meanings provided by the Sun and the Ascendant. The sign in which the ruler of the Ascendant is posited fine-tunes the style of personality described by the Sun and the Ascendant. It may strengthen it if the sign is identical to either of them.

The ruler of the Ascendant, Steven Spielberg, is the Moon. It is posited in the sign of Scorpio and makes you appreciate mysteries and the unknown. You need to understand, to solve riddles, and to take action behind the scenes, perhaps so as to be even more efficient. Your criticising skill is a weapon, but it may also backfire on you, just like your sometimes excessive obstinacy.

Aspects to your Ascendant

Several planets form an aspect with your Ascendant, Steven Spielberg. Therefore, in their specific way, they modify your behaviour and your personality, which do not take on the pure characteristics of your Cancer Ascendant only, but which are a blend of its characteristics with those of the said aspects.

★★★★★ Neptune square Ascendant, orb -0° 09'

Neptune is in dissonance with your Ascendant, Steven Spielberg. You may have difficulties in controlling your emotions, and you tend to hesitate about the behaviour to adopt in society. In some circumstances, you distrust everyone, yourself and other people, without knowing the reason why. Keep your feet on the ground and do not allow your imagination to carry you too far away from sheer reality! No one nurtures bad intentions towards you. This is something you must realise if you do not want to get worked up about... nothing.

★★★★★ Moon trine Ascendant, orb -3° 56'

Your instinct seldom misleads you, as far as your external appearance is concerned, thanks to the Moon's soft aspect with your Ascendant, Steven Spielberg. You keep your emotions under rather good control, in instinctive and smooth ways.

★★★★★ Jupiter trine Ascendant, orb 7° 08'

Jupiter in soft aspect with your Ascendant naturally endows you with a reassuring, calm, and benevolent side, Steven Spielberg. You honour your commitments without qualms, and thanks to your heart of gold and your generosity, your behaviour is protective and nice. You like to please other people, and whenever it is possible, you enjoy finding compromise solutions to all problems.

★★★★★ Mars opposite Ascendant, orb -9° 38'

Mars in opposition to your Ascendant is not strictly speaking a dissonance, Steven Spielberg, since at the same time, he is in conjunction with your Descendant, the angle facing the Ascendant. Therefore, this configuration should be interpreted as a conjunction. Mars on the Descendant indicates a good capacity for action with an above average energy which may be excessive. You tend to take action for, and according to other people rather than for your own interests - which is all to your credit. In some circumstances, your behaviour may come across as hot-tempered, even aggressive, whereas you intend to act smoothly for everyone's good. Generally speaking, with this dynamic configuration, you can but benefit from toning down your actions with more flexibility and gentleness. This is how the image you project can become more appreciated and more rewarding. Indeed, whilst you mean to do good, you may be a bit brutal!

Your Sensitivity

Your sensitivity is intuitive and clear-sighted Steven Spielberg. Your exacerbated affectivity and your emotions are secretive, intense, deep and sensual. Your magnetic nature seduces. You are aware of the strange fascination you exert and you gladly cultivate this mysterious aura. Your feelings are so powerful that you may feel you should repress them sometimes. But the more you try to control them, the stronger they grow. Therefore, your jealousy may reach such levels that it may hurt. Without half-measure, you become aggressive and you can harm because your inner radar instinctively detects other people's weaknesses. Your emotions are often filled with eroticism and you are an explosive blend of lucidity, amorous intensity and constant provocation but... you are so charming! Your nature is attractive, even bewitching. After all, the only persons you offend are the middle course followers...

Entertainments, hobbies and parties, love affairs, holidays, here are the areas where you express best your emotions, Steven Spielberg. You like children's company, your popularity is often good and you use it in order to increase the number of your encounters in order to see your seductive power.

You are often endowed with artistic creativity. Art is a good outlet for all these gushing and fluctuating emotions that must be released at the slightest external stimulation.

★★★★★ Moon square Saturn, orb -1° 18'

When this aspect is not well integrated, there is no feeling of integration and security. You feel that you are not understood or even, that you are rejected. It is difficult for you to find inner peace and tranquillity. You lack the quietness and the primordial confidence that would allow you to lay back and to be carried away and pampered by life. This configuration indicates questionings and doubts regarding the unconditional affection that each individual longs for. You do not trust the world. You tend to dismiss social models, as well as your close friends' attachment and tenderness, probably because you need to test them and to get the feeling of being loved that you naturally lack. It would be a mistake not to see that you desperately need affection. You are particularly vulnerable to relationship flaws and you strive to find the gestures of love that would allow you to let go and to be nurtured by life. In such a context, the sincerity you display, as you give or refuse your trust, is highly commendable.

★★★★★ Moon square Pluto, orb -6° 15'

This planetary configuration causes distrust (Plutonian distance) towards individuals, groups, or your own family environment (lunar values). It may bring about a feeling of affective or relational wound. The feeling of security is absent, or fragmented or illusive. How is it possible to feel integrated whereas you know that you are different and on your own? It is the myth of the « ugly duckling », with its different specific characteristics, an alien to its origins and its roots. It is important that you accept your differences and that you have them accepted by others, without forsaking your essential values. This is how you can exercise your group ownership without allowing them to exclude you or to repress your secret determinations. When this aspect is well integrated, it is a factor of lucidity for your emotions. You perceive without gullibility what is really at stake in your intimate relationships and the flaws of your environment. The fact that you do not readily trust people spares you many traps and delusions.

★★★★★ Moon sextile Mars, orb -5° 42'

Your vivid imagination goes hand in hand with you desire to make your dream come true and to struggle, so as to remain true to yourself. You easily mobilize your energy and your resources. This harmonic Moon-Mars aspect indicates the will to keep your intimate balance under all circumstances. You thrive in action; you court danger, particularly when your regular environment is endangered. In the

private sphere, you exhibit complete straightforwardness. This planetary configuration allows you to quickly get back on your feet within a new context. You adapt well to unprecedented situations. Your capacity to integrate events rapidly can only increase your adaptation abilities.

★★★★★ Moon sesqui-quadrate Uranus, orb 2° 21'

The Moon and Uranus intrinsically share little in common: they get along as well as fire and water! It is difficult for you to reconcile your desire for well being and intimacy with your destiny's dazzling passions and thunderbolts. You may feel that your intimate and family realm hampers your freedom. There is a potential for crises, explosions or splits. The desire for independence does not get on well with security concerns. There may be strong temptations endangering your very life foundations and you may embark upon a liberating and personal adventure. However, you fear rash decisions. Your need for security may temper your impulses and put a brake on your individualistic aspirations. To harmonize these tendencies within your intimate life, you must leave yourself enough room for personal expression or for an activity of your own. Otherwise, as days go by, built-up tensions may jeopardize the quiet course of your life.

Your Affectivity

In your chart, the Sun is in Sagittarius and Venus, in Scorpio. These two signs follow each other and are as opposite as they are complementary. The association of restive Scorpio with Sagittarius, open to all winds, is a paradoxical one. Your solar sign gives you an enthusiasm capable of arousing the most unexpected passions. You claim a commendable lack of prejudice and you manage to understand the other person's differences. However, to understand does not mean to accept... Often, Scorpio's violent and implacable passions clash with Sagittarius' wide resolutions. For worse and also sometimes, for better. Your paradoxical sensitivity is also part of your strength, your richness and your charm. Sagittarius wants to thoroughly understand and he adjusts his thought process to his beloved partner's. However, this configuration does not describe a quiet conformism. Scorpio is possessive, unyielding and exclusive in his loves and his hatred. Therefore, it is difficult to anticipate your affective reactions. Sometimes, a real understanding of your partner, coupled with an unfailing affective impulse, allows you to experience the intense moments of a shared love. It may be followed by a period of paradoxical, sometimes cruel passions, tears and laughter. A time for "if you don't love me, I love you". It is likely that it is your way to avoid what you dread most in the world: boredom born from stiff love.

You cannot dissociate love from passion, Steven Spielberg. Your feelings are immediate, imperious, intense, and it is absolutely impossible for you to think of an amorous relationship without fusion, without the irresistible desire to know everything about your partner: emotions, feelings, sexuality, everything must be experienced in a possessive, absolute and unrestricted way. Actually, your feelings are as complex as they are deep. You seldom love, but when you do, a burning ardour and its torrid, violent frolics consume your couple. It is obvious that such powerful feelings may lead to jealousy and absolute exclusivity, almost bordering on the will to control your partner. If your relationship is genuine, all is fine. But if it is not the case, there are real dangers of shared wounds within your couple; it is hard to reconcile passion with tranquillity and it is clear that for you, sentimental serenity involves a partner who is either as complex as you and who instinctively understands you, or who is complementary, and as calm and steady as your impulses are intense and deep.

Steven Spielberg, your Venus has a natural affinity with this house. She feels very comfortable and she gives her best in terms of intensity of feelings, artistic creativity, inclination for leisure, entertainment,

fine arts and music gifts and even, the capacity to easily communicate with children. With Venus in this house, more than in any other position, the affectivity is increased and endows you with an active and enterprising attitude, in this area of life. Creativity is associated with the 5th house and Venus here allows you to blend pleasure and motivation, not only in the field of artistic creation and entertainment, but also in love, where you are prompted to fearlessly create or to actively develop romantic relationships with the elected person. Besides, you are particularly at your best here, more ready to extend extreme kindness, warmth or seduction than in any other of your daily activities. However, the danger with this position is to fall prey of your own great ability to please, to seduce or to enjoy yourself, be it through romantic dissipation or through sheer pleasure to shine.

★★★★★ Venus conjunction Jupiter, orb 1° 18'

Charm and seduction are your assets. This harmonious Venus-Jupiter aspect favours your affective fulfilment and your sentimental well being. You earn your entourage's sympathy thanks to your conciliating sensitivity, your desire to please and your behaviour in society. In many circumstances, you arouse esteem and consideration – essential values to you. You like social whirls, life in society, the aesthetics and the arts. You often tend to look for the easy way out in your business and your affective relationships. You are known as a complacent person. However, your amorous commitments may be quite superficial. It is important that, without breaking the spell, you opt for a more genuine attitude, respectful of your essential desires. As we all know it, love cannot be bought. An indication of balance: because you are aware that compromises are necessary for a love affair to endure, better than anyone else, you know how to maintain harmony in love.

★★★☆☆ Venus inconjunction Uranus, orb -0° 14'

Your sentimental life is adventurous: you prefer Bohemia to the comfort of a quiet but shaky love affair. You are a hard-liner and you think that love should be genuine or it should not be at all! You have difficulties in resisting your heart impulses and untimely passions that may challenge your affectivity. You need air, freedom and a relative independence. You also need to fully experience your love impulses, regardless of the price to be paid. The heart has its own reasons that no rules can hamper... The obvious danger may be to cause dramatic hurly-burly. Your inflexibility on the affective plane does not favour a quiet life where « one makes do with very little ». You are the all or nothing type. But does the absolute really belong to our world?

★★★☆☆ Venus square Pluto, orb 6° 08'

Nothing is simple in love. You consider your love life with a distant and remote glance. You do not believe in obvious, transparent relationships. Love is a complex issue and its machinery is beyond you. To avoid delusions and indifference, the rules must be changed. Your feelings are alternately cruel and passionate, distant and burning, often paradoxical. Are you the executioner or the victim? Power struggles are omnipresent in your affective life. You seem unable to take life as it comes and to love without asking yourself questions, without doubting. You often love those who are indifferent towards you, while you despise those who love you. It is important that you change your attitude if you want a smooth and happy life. Rely on your forte: an indisputable lucidity that makes it impossible to delude your heart.

The Way You Take Action and Your Sexuality

Steven Spielberg, you are so resistant and so solid that you are able to cope with any challenge, any ordeal. You behave with persistence, rigour and discipline. You are so obstinate and patient that no effort is impossible to you, as if sensitivity and emotions were unable to divert you from your goals. With calm and lucidity, even coldness, you face up to things and you plan on a long-term basis. Nothing and no one can prevent you from fulfilling your responsibilities. You are a rock, a hard worker, and your iron will equals your resistance to blows. Your practical sense is at the service of your ambition which is real and energetic, even though it may not be obvious. Sexually, you are active and vigorous. If you show more warmth, you may become an excellent lover; indeed, being demonstrative is not your major concern.

It is in the area of your work environment that you are most active and pugnacious, Steven Spielberg. Or in your daily life, if you do not work.

You are a hard-worker, completely dedicated to the service of others: being helpful and efficient is your battle horse. Indeed, it is so obvious! Ask the opinion of your colleagues or your entourage... Your efficiency is not to be proved. You get things moving, you progress, you are very keen to improve yourself, and your boss can only rejoice that his staff contributes so actively.

The areas of health and pets are traditionally favoured by this planetary configuration. However, do check your Mars' aspects if you intend to be a tamer!

In any case, the daily work sphere is the area where you can deliver to the best of your abilities, in terms of action. The only reservation may be not to overdo.

★★★★☆ Sun conjunction Mars, orb 4° 41'

This planetary Sun-Mars aspect reinforces courage, determination and energy. The need for action is obvious. Whatever your will designs is implemented with fieriness, despite all oppositions. You are decisive and wilful, even foolhardy. Your behaviour may be heroic: you know how to face adversity, to stand for your rights and your decisions, regardless of the confrontations you may have to cope with. The only danger may be that you overestimate your chances and your strength. But your audacity turns out to be rewarding, more often than not.

★★★★☆ Mars bi-quintile Saturn, orb -1'

Persistent action always bears fruit eventually. All that is needed is patience... A quality you have, undoubtedly. As confrontations become unavoidable, you show strong persistence and indisputable perseverance. Potential obstacles are more stimulating to you than they are discouraging. You are naturally fit for effort and for confronting realities and facts. You quickly overcome difficulties and you respond to crises in an efficient and considerate manner. You are enduring. You handle events with rigour and precision. These are valuable qualities nowadays, for they often come with the capacity to undertake adventurous experiences and to take limited risks!

Your Intellect and Your Communication Style

Your thirst for learning is considerable, Steven Spielberg, and you can spend a lifetime studying languages, geography, philosophy and law, particularly. You are open-minded and you want to abolish

all kinds of frontiers. The humanist, who is dormant in you, may turn into a “frequent traveller” reaching out to others in order to understand them and communicate with them. You express your opinions and your beliefs with honesty and clarity and likewise, you receive others' views with enthusiasm. You have numerous centres of interest and you may be perceived to be superficial, heedless and over-optimistic. However, if you manage to control your tendency to scattering, all your encounters, all your discoveries can positively influence your philosophical life approach.

It is at work that you can release your mental power full steam ahead, Steven Spielberg. What's the point of racking one's brains if it's not to show one's professional value, to climb the social ladder, to earn one's colleagues' esteem, and to improve oneself every day. You adjust very well to your work environment or at least, this is one of your main concerns.

Your intelligence is rather practical or concrete and you are often interested in health and sometimes in pets, and you are very keen to turn each day into a source of intellectual stimulation.

★★★★★ Mercury trine Saturn, orb -0° 21'

Your vision of the world is rigorous and objective. An exemplary logic characterizes your mental attitude and your human relations. Your discerning faculties overlook no detail. You need to know the whys of your life and to explore the backstage of your surrounding world. The deepness of your relations dismisses superficial connections. It may be the reason why your interest is aroused when you are in touch with elements that are alien to your mode of functioning. You have the soul of a researcher, regardless of the form that your investigations may take. It may be an exacerbated curiosity for human topics or a will to understand relationship stakes. It may also be a hobby or a course of study that introduces you to a riddle. It does not matter! Life is a perpetual quest for the unknown. Your critical mind is highly developed and you take commonplaces for granted only after thorough consideration.

★★★★★ Mercury sextile Neptune, orb -2° 49'

Your sense of psychology and of human intimate mechanisms is acutely developed. Your relations are nuanced, clever and guided by a good intuition of individuals. Without effort, you pick up what is at stake in relationships and in contacts. Your « sixth sense » inspires you and may take you into strange roads. On the relations' plane, there is an indisputable subtlety. You know what you should not say or, on the contrary, you naturally find the suitable words. Your natural and non-rational attitudes often prove right. The unknown fascinates you... Your curiosity for occultism and mystery is keen. Besides, life is a huge human enigma for you.

★★★★★ Mercury trine Pluto, orb -5° 18'

Gullibility does not belong to the collection of your faults! You have a good grasp of human mechanisms and you easily detect flaws, calculations and hidden motivations. Human relations are subtle, never black or white, always complex. You often speak in riddles or in negations and you prefer to use the ambiguous language of symbols rather than the simplistic clarity of words. In this way, you fuel your mystery. On the relationship plane, your strength lies in the delicate art of highlighting flaws, detecting what destabilizes the enemy or, on the contrary, identifying what is relevant to your friends. You are more interested in what is concealed than in what is openly said. More often than not, you exercise an indisputable clear-sightedness.

★★★★★ Moon semi-sextile Mercury, orb 0° 57'

Curiosity is part of your nature. You perceive everything with sharp acuity. You increase your attempts to establish connections and to exchange opinions and information, particularly when you are in a familiar and intimate context. When this configuration is well integrated, it underlines the multi-faceted nature of the mobility that defines your behaviour and your living conditions and endows you with strong adaptation abilities. You also show a remarkable gift for improvisation and you pick up the quality of the atmosphere so swiftly that you get off any tricky situations. However, you must keep your adaptation capacity under control because when it is overdeveloped, it may become an agent for instability.

Your Goals, Motivations, Career, and Destiny

Your Sun is posited in the 6th House

You are a perfectionist, Steven Spielberg. Your constant concern is to improve yourself in every regard, to amass knowledge, to become helpful and to be at the top of your performances and your competencies. Work is an important area and, contrarily to many others, you are comfortable in this field where you can expend a lot of efforts and progress.

You are obsessive about organization and tidiness. Your varied interests - service to others is their common aspect - are less important than the harmonious and quiet ways you display when you carry out your responsibilities.

Being helpful is one of the important motivations that make you feel alive. You can't help it, you are very keen, not only to use your work capacity in a lasting and well-organized way, but also to feel the gratitude of your superiors or of the persons you commit yourself to with loyalty and with the constant concern to demonstrate that you improve yourself.

According to the Tradition, you are naturally interested in health, dietetics and all medicines dealing with well being and fitness. You may work happily in medical fields because they suit your tendency to do favours, to be helpful and to continuously improve your efficiency.

Your strong predisposition to be helpful is in contradiction with the taste for commandment. To become a leader or to accept too many responsibilities is not your cup of tea. You prefer to be the accomplished number 2 and to make yourself indispensable, rather than to take on the burden of authority struggles and to embark upon unsafe territories. For this reason, with this configuration, you may be somehow over-competent for the position you hold, contrarily to the well known Peter's principle stipulating that one reaches one's highest level... of incompetence at the end of one's career. You are a good specialist, a trustworthy person, an irreplaceable aid and that's more than enough for you.

Going further into the description of your deep motivations, in the least favourable cases, you may repress your legitimate ambitions. You are among the persons who need to be encouraged to free themselves from their inhibitions and to not fear the Unknown. You may worry over the fact that you are not up to it or over your health condition: the cure? Charge ahead, go for it, handle your career without fear and beware of ever becoming a hypochondriac...

The ruler of your chart is in the 5th House

The ruler of the Ascendant, also referred to as the chart ruler as explained in a previous chapter, is also posited in one of the twelve Houses of the chart. Just like the Sun in his House, the ruler of the Ascendant provides certain abilities, or it makes you appreciate more keenly certain areas of life.

The ruler of your chart is in the 5th House, Steven Spielberg. Your favourite fields include all the pleasures of life: romance, entertainment, gambling, and pastimes. You may also be attracted by creation, whether it is of an artistic, scientific, or cultural nature, depending on your personality. You communicate with great ease with children, and you are naturally fond of them.

Aspects influencing your ambitions

Regarding your destiny or your career, the following aspects of your natal chart allow to fine-tune what has just been said above:

★★★★☆ Uranus square Midheaven, orb -1° 16'

Uranus is in hard aspect with your Midheaven, Steven Spielberg. There is definitely nothing serious to worry about. There may be a lack of perseverance in the efforts you put in order to move forward in your career or your social destiny. When unexpected hurdles crop up, more than anyone else, you must accept the unavoidable changes without losing sight of your aims, and above all, without getting disheartened. More than anyone, you must learn to accept the values of time and duration, if you are to reap their fruits.

★★★★☆ Venus trine Midheaven, orb 1° 3'

In your natal chart, Steven Spielberg, sweet Venus is in soft aspect with your Midheaven. It means that your natural charm and the way you express your feelings are appreciated in society. Usually, this configuration speeds up the achievement of your professional goals, or in any case, of a certain social status. A female - or females - may prove helpful for your career or your destiny.

★★★★☆ Jupiter trine Midheaven, orb 2° 49'

Jupiter is in soft aspect with your Midheaven, Steven Spielberg. It means that you are often lucky, or that you receive support in your career or your social destiny. You trust your abilities to overcome obstacles coming up in your way, and you respect authority and laws. So, thanks to this configuration, you make your way in the world with the feeling that you move forward rather quickly, as compared to average people.

★★★☆☆ Sun opposite Uranus, orb -6° 57'

This Sun-Uranus dissonance indicates a dazzling will to be the centre of attention and to proclaim your specificity, by all means. This aspect belongs to the rebel and the revolutionary restive to all forms of authority and of model. To balance this interpretation, the strong need for autonomy bordering on frenzied individualism must be highlighted. You allow nothing or no one to hinder your chosen line of conduct. Obviously, your attitudes are inflexible. You prefer to continue to the bitter end, even when you are wrong, rather than to be more open to people's ideas. Tyrannical attitudes often turn against the perpetrator... However, this configuration is a powerful agent for creativity, provided your hothead and extremist nature is kept under control.

★★★★★ Sun square Midheaven, orb -5° 41'

What you really want to do, or the way you consider everything, may be in contradiction with your professional goals, Steven Spielberg. You may experience conflicts of authority, or a few hesitations over how to manage your career. In any case, you must display flexibility and water down your wine if you want to remain on the right track and achieve professional success. It is the only solution to this discrepancy between the Sun and your Midheaven.

★★★★★ Moon sesqui-quadrate Midheaven, orb -1° 05'

There is a dissonance between the Moon and your Midheaven, Steven Spielberg. It may indicate a discrepancy between your sensitivity and the goals you set for yourself in life, although this dissonance seldom plays out dramatically. You may feel that your emotions sometimes catch you off your guard in society, and that the level of your popularity is not too satisfactory, without your knowing the reasons why. In some cases, females may thwart your social ascent.

★★★★★ Sun sesqui-quadrate Pluto, orb -1° 39'

You are dealing with both sides of the coin. People are mistaken when they think that they know you well, because the image you project does not necessarily depict what you really are. You may look like any given model, whereas you actually consider social values to be empty and childish. Deep down, you are an anti-establishment person and you do not belong to the world and its laws. Or, on the contrary, you may project a more marginalized image and make it a point of honour to literally stick to your aspirations' ethics. You do not know who you are really, and where you stand. You may choose some sort of marginality, the adherence to another realm and a different scale of values. Unless you choose a life that apparently lives up to the expectations of others. In that case, you preserve a corner for your private secrets, with no norms, no fashion concerns, relationships off the beaten tracks, passions very removed from conventions. Your attitudes may seem paradoxical as you shift from commitment to refusal and from involvement to withdrawal.

★★★★★ Saturn sesqui-quadrate Midheaven, orb 2° 24'

Saturn is in dissonance with your Midheaven, Steven Spielberg. Of course, nothing really serious is to be feared. It is just that sometimes, you feel that an unfair slowness keeps on delaying the achievements you deem that you deserve right now. You must work twice as hard to climb up the rungs of success, and above all, you must not get disheartened. Effort is one of the values you must work on, and it is a punishment by no means. It is obvious that your goals are achievable, but you must remain on the right track and show perseverance. That's all!

Your Assets and Your Part of Joviality

The present of the planet of Greater Fortune to you Steven Spielberg, is the gift for investigation, the taste for mysteries and... the capacity to solve them. Your emotions are amplified and prompt you to take your actions to the end, without fear or restraint. You also have the talent to cleverly manage your financial investments. According to the Tradition, sexuality and sensuality are equally balanced with this lucky configuration. So enjoy and be happy!

For you, Steven Spielberg, nature's present includes a lot of great satisfaction in the area of leisure, entertainment, creation and love. Anything with a hint of pleasure is favoured. A marvellous world exempt from constraint and obligation illuminates your life. According to the Tradition, your luck also

applies to your communication with children and your descendants are harmonious and successful.

The planet Jupiter symbolizes expansion, broadness and generosity. Jupiter is associated with the functions of synthesis, enthusiasm and optimism. In your natal chart, his house position is more important than his sign position because, like Saturn, Uranus, Neptune and Pluto, he is a slow planet. Many people born in the same period have Jupiter in the same sign. This is the reason why the sign occupied here is less meaningful than when it is occupied by the so-called fast planets, i.e. the Sun, the Moon, Mercury, Venus and Mars. Therefore, some caution is to be exercised as you read what follows.

Jupiter in Scorpio strengthens your emotional realm and your instinctive capacity to have more lasting and deeper feelings. Your sensuality and your sexuality are favoured by this configuration. You may enjoy strokes of luck in the areas of finance, speculations, investments and inheritances. More than anyone, you can deal with mysteries and anything linked to the unknown.

Your Serious Side

Your ambitions and your self-perception are marked with some degree of detachment. You become less frivolous and more detached from individual and superficial values as time goes by.

Financial affairs, and more particularly, your earning capacity, constitute the challenges of your life, Steven Spielberg. In this area, your practical sense is not too good and remains to be improved. This is the first thing you should work in order to progress and to gain self-confidence.

You are distrustful and you spend too much time analyzing before taking action by yourself; you must understand that, to be able to win, you must accept to lose, to take risks, and to give for the sake of giving. There is no other way out. As time goes by, you use your persistence to gain material security and to steady the flow of your income in order to overcome feelings of frustration.

The planet Saturn symbolizes contraction, effort, time, limitation and concentration. Saturn eliminates anything that is not authentic, sooner or later. It is impossible to cheat him as he gives an irresistible desire to form a coherent whole with oneself, in responsible and wise ways. He is the great purifier. He represents our limitations but also our truth. In your natal chart, the house position where Saturn is posited is more important than his sign position because, like Jupiter, Uranus, Neptune and Pluto, he is a slow planet. Many people born in the same period have Saturn in the same sign. This is the reason why the sign occupied here is less meaningful than when it is occupied by the so-called fast planets, i.e. the Sun, the Moon, Mercury, Venus and Mars. Therefore, some caution is to be exercised as you read what follows.

Saturn in Leo tends to detach you from pleasure and leisure and gives you a serious and responsible nature. These are good qualities if Saturn is not badly aspected, even if your inclination for having fun is not particularly increased by this planetary configuration...

A Few Special Points

Your Uniqueness and Your Utopias

It is within a setting of secrecy or of isolation that unexpected events may suddenly occur. Sometimes, it may be on the occasion of unpredictable events that isolation settles, be it a context of exile, forced solitude such as illness, or imprisonment caused by enmities or by fate.

Great satisfaction may also occur in a secret context. It may be a hidden love affair, an activity carried out in the dark or an association with a person whose identity cannot be revealed.

The areas of the occult or of secrets (espionage, police, secret society, etc.) are frequent causes for change in the course of your destiny. Reversals and incomprehensible disruptions may give you the opportunity to understand that the persons whom you considered as your friends do not side with you, or sometimes, more happily, you realize that the persons whom you considered as your sworn enemies are actually of invaluable help and support, and that they even become... your friends!

Your Inspiration and Your Illusions

Your vision of your childhood home, or of your father, is quite vague, but your emotions in these areas are intense. There is a vital need for you to feel comfortable at home because, otherwise, you tend to imagine horrors that exist only in your mind!

You may encounter complications, lack of understanding, or mystery regarding your origins or your real estate. In any case, it is hard for you to discern when you are "at home" and, even when all is well, you tend to idealize your household.

Your Passion and Your Authority

This configuration may equally indicate an extreme greed for material gains or, on the contrary, a complete lack of interest in them. Your relationship to money may be secretive and obsessive.

You may earn huge amounts of money, with stubbornness and harshness, in a concealed but actual way, or in the darkness of risky speculations; in all cases, your attitude towards your earnings is... passionate, although you do not acknowledge it. The danger is that you may lose a lot. However, it is only when one is prepared to lose that one has a chance to gain a lot, and you certainly know it.

On a more symbolical plane, your sensuality and your possessiveness may be particularly strong. It is advisable that you step back, in order to become able to retain only the best of this configuration.

Your Isolated Planets

In general, the ten planets of the chart are connected to other planets by major or minor astrological aspects. It is owing to those ties that the planets' energies can manifest in the chart owner's personality and play out within safeguards according to a specific tonality.

It seldom happens that in a natal chart, a planet is totally disconnected from the nine other planets.

Astrologers have observed that when such a case occurs, the person feels the energy of the unsuspected planet in quite a singular way, very jerky and powerful at the same time. Thus, for instance, the famed astrologer Jean-Baptiste Morin de Villefranche wrote that "an unsuspected planet heralds that something strange or extraordinary will take place regarding the meanings of the house in which the said planet is posited" (source : l'astrologie selon Morin).

Rules for detecting an unsuspected planet: among all the testimonies that we have reviewed to this day, based on our experience, we tend to agree with American astrologer Janis Huntley who accepts seven aspects, which involve the zodiacal twelve sections of 30 degrees. The aspects to be considered are the conjunction (0 degree, cooperation or tension), the semi-sextile (30 degrees), the sextile and the trine (60 and 120 degrees respectively, aspects of cooperation), the square and the opposition (90 and 180 degrees respectively, tensed aspects), and the quincunx (150 degrees, slightly tensed). In this detection, the chart's angles are not taken into account.

In any case, it is important to remember that an isolated planet clearly expresses its influence when it is a personal planet. Thus, when the Sun, the Moon, Mercury, Venus, or Mars is isolated, it is certain that the effects described by Jean-Baptiste Morin de Villefranche will become manifest. As for Jupiter, Saturn, Uranus, Neptune, and Pluto, one must be cautious because the volume of cases documented is not yet large enough.

Your chart has no isolated planet, and this particular case does not apply to you.

Annex 1: Your Minor Dominants

The five following dominants are less significant than those described at the beginning of your report. They may not be strongly felt. In some cases, they add several minor details to the analysis of your character, but they are rather for curiosity purposes. It is not necessary to take them into account when you first read your portrait.

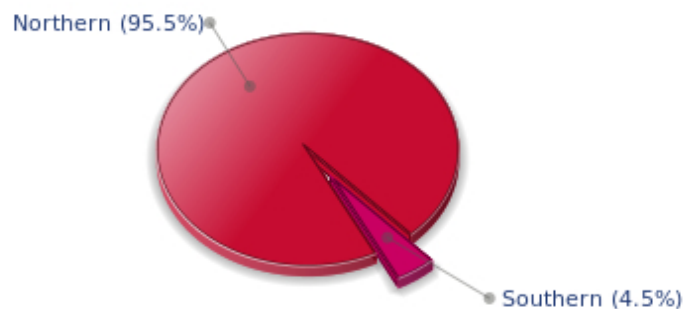
Your Planetary Repartitions: Northern, Southern, Eastern and Western Hemispheres

The axis linking the 1st house's cuspid (the Ascendant) to the 7th house's cuspid - the Descendant - divides the zodiac into two bowls, a superior bowl, in the South, and an inferior bowl in the North. Quoting an expression by the famous American astrologer Rudhyar, the Southern part and the Northern part correspond to two functions: "being" and "doing". Other concepts are also associated with this North and South distribution, such as introversion - Northern hemisphere - and extraversion - Southern hemisphere - being or appearances, inner life or external life, reflection or action, dreaming one's life or living one's dreams, the abstract or the concrete, backstage or limelight.

This is not about determination but about personal inclination: thus, some people will be thrown into public life despite a prominent Northern hemisphere. If this happens, however, it will not be due to their will, their taste or their deep nature. Conversely, a prominent Southern hemisphere will not bring about a famous destiny to its owner, even if he tends to turn the spotlight on himself, or if he looks for a more active life. It is a matter of deep nature and natural inclination. Of course, none of the typologies is "superior" to another.

In your birth chart, Steven Spielberg, the ten main planets are distributed as follows:

Your Northern and Southern Hemispheres



Steven Spielberg, the predominance of planets in the Northern hemisphere prompts you to reflect and imagine rather than to exteriorize your actions and to be at the forefront of the stage. So, should you wish to remedy this situation, it is up to you to force your nature to take action in broad daylight, to communicate, and to assert yourself... then, you can move forward in this concrete life and enjoy your newly won situation.

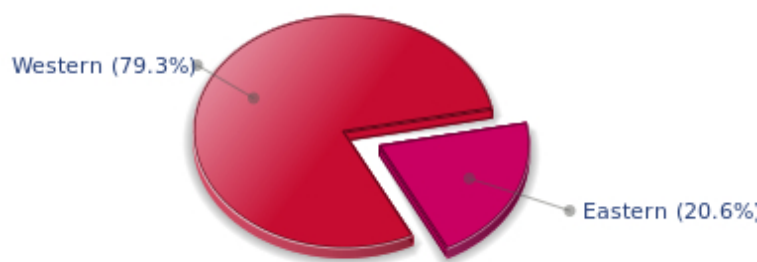
The birth chart is divided into two other parts, Eastern and Western, by the axis linking the Midheaven

to the Imum Coeli.

The Eastern part, on the Ascendant side, shows the person's ego, will, magnetism, and vitality, whereas the Western part, on the Descendant side, symbolizes other people, communication, relationships and their influence, as well as flexibility and adaptability.

Steven Spielberg, here is the planetary repartition in your Eastern and your Western hemispheres:

Your Eastern and Western Hemisphere:



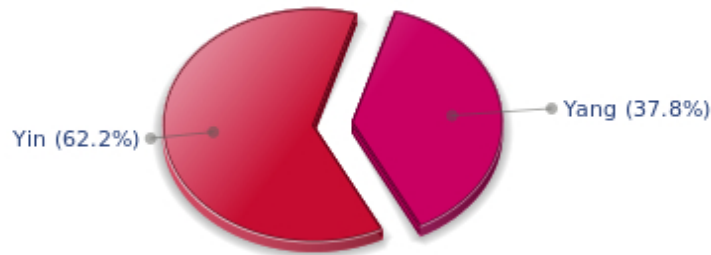
The predominance of planets in the Western hemisphere of your chart means that you are quite flexible, capable of empathy, convivial and communicative. An excellent factor for many professional activities or for your social or sentimental life for example.

A definite asset... provided that you are not at the centre of the decisions you must take in your life: you may be tempted to listen to the last person who spoke, and your flexibility won't always get you out of the tight spot. You are therefore advised to learn to decide alone and to cope with the consequences of your actions with courage and without regrets. This attitude will allow you to combine flexibility and action, adaptability and absence of hesitation.

Your Yin and Yang Polarity

The twelve signs are divided into two polarities, called active or passive, or sometimes masculine and feminine, positive and negative, Yang and Yin. This classification corresponds to two quite distinct tonalities, the first one bringing extraversion, action, self-confidence and dynamism, the second one, introversion, reactivity, reflection and caution. None is superior to the other, each group has its own assets and shortcomings. Odd signs - Aries, Gemini, Leo, Libra, Sagittarius and Aquarius - belong to the first group, whereas even signs - Taurus, Cancer, Virgo, Scorpio, Capricorn and Pisces - belong to the second group.

Your Yin and Yang Polarity



According to the disposition and qualities of your planets and angles, you are rather influenced by Yin energy, the passive polarity, Steven Spielberg: you are quite introverted, imaginative and sometimes discreet, but you are a deep and wise person who is not content with just noisy and flashy things. At times, you doubt but you think that those who don't are a bit... thoughtless. Allow yourself to take more laid-back attitudes and put your reserve aside, because good equilibrium is always healthier.

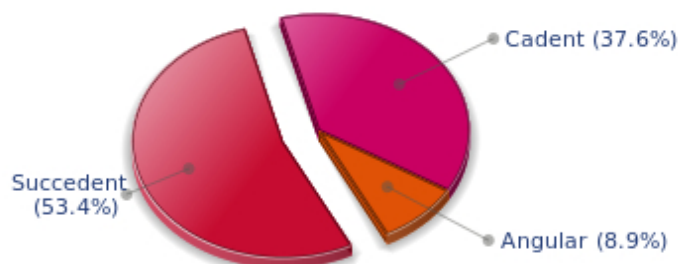
Your Houses' Accentuations

Houses are split up into three groups: angular, succedent and cadent.

The first ones are the most important ones, the most "noticeable" and energetic houses. They are the 1st, 4th, 7th and 10th houses. Their cusps correspond to four famous angles: Ascendant for the 1st house, Imum Coeli for the 4th house, Descendant, opposite the Ascendant, for the 7th house and Midheaven for the 10th house, opposite the Imum Coeli.

Planets are evaluated according to a whole set of criteria that includes comprehensive Western astrology rules. At their turn, planets emphasize specific types of houses, signs, repartitions etc., as previously explained.

Your Houses' Accentuations



The emphasis is on succedent houses in your chart, namely, the 2nd, 5th, 8th and 11th houses, Steven Spielberg: this configuration usually endows a personality with affective and sensitive qualities. Obviously, to the detriment of self-confidence or self-assertion, but your heart qualities may be very important. These houses also favour realization. Time and patience are part of their characteristics. However, they are only indications and you must include them in the rest of your chart in order to see whether they are validated or not!

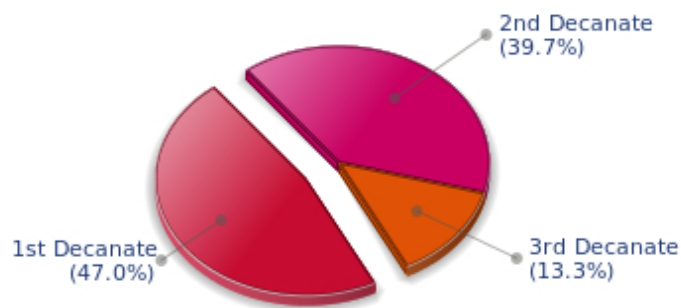
Your Esoteric Decanates

Each sign contains 30 degrees and can be divided into three equal parts: the decanates. The Tradition indicates that specific meanings can be associated to each of the three decanates. Their sphere of activity is usually limited to the Sun sign, however, it is even more interesting to observe the distribution of all the planets in the chart to get an idea of the respective importance of the three decanates, which can complement the description of the personality.

These meanings must be considered with the greatest caution. Indeed, they are minor characteristics that can only underline other outstanding traits of character.

Traditionally, the first decanate highlights the characteristics of the sign where a planet is located. The two other decanates correspond to sub-dominant planets, depending on the nature of each sign. This system leads to a multiplication of meanings and it is impossible to have a clear understanding: here, we prefer to give only the meaning of one decanate in comparison with the other two, within the birth chart as a whole. Again, the greatest caution is needed with regard to this minor indication as it is not always reliable: it is not essential that you read these texts in the beginning. You can get back to them later on, once you have read more important interpretations

Your Esoteric Decanates



The first decanate, which means the part between 0° and 10° of any zodiacal sign, prevails in your natal chart, Steven Spielberg: this decanate is traditionally linked to vitality and physical constitution, and may indicate that you efficiently express your concrete energy on the material and sensual planes.

Annex 2: Karmic Study

The karmic theme is a good complement to the psychological portrait, or natal chart. This analysis is based on the positions of the Lunar Nodes, the Black Moon and the Part of Fortune: they are also called fictitious points and describe the spiritual purpose of your destiny. Because there is in all of us an experience and a quest, our life is an evolutionary journey... provided that we head towards the right direction, of course! Indian astrologers highly prize the Nodes axis (North Node and South Node). It is the Ariadne's thread that we are invited to follow. The Black Moon indicates the sector where we are most likely to transform or to transcend, whereas the Part of Fortune points out the area where we can easily express our specificity.

The Lunar Nodes: a spiritual path

Lunar Nodes have their roots in the Indian tradition and they are based on a simple concept: each of us have a mission of their own, here on earth, a destiny, a course. According to the Indian philosophy, life is a school: the nodal axis describes our past experiences (South Node, our karma, our spiritual inheritance or our previous lives), and our aims on earth (North Node, our Dharma, the purpose of our current incarnation). This is the reason why the study of the lunar nodes is called "Karmic astrology". Here, we shall not step into hypothetical past lives. Wherever our current trends may come from, all that really matters is that we become aware of the purpose of our life, its finality and our dharma. We are likely to understand our life purpose around the age of 37, when the Lunar Nodes return to their natal position.

The Lunar Nodes highlight all types of discoveries and explorations. There is a strong desire for travels, whether actual trips or spiritual, inner ones. Since your childhood, you are particularly interested in unlimited spaces and total freedom. You never trusted smothering attachments and you always allow your thoughts and actions a free hand. The danger is that your life may be unstable because you so badly need to evolve and to discover... Life is an eternal quest of something else, some vital but hidden dimension that is beyond you. Therefore, it is difficult for you to blossom when your family or work environment is routine. However, it is important that you control your wild tendency (the other side of the coin of the wonderful freedom of thought): life requires more sociability. It does not mean that you must accept a conformism that is too far from your inner aspirations. More than other people, you need to develop your relations, your exchanges and your dialogues. In this regard, your destiny is marked by communication.

Your doings indicate the challenge to dedicate an important part of yourself to devotion and abnegation. Life imposes a few sacrifices on you, whether agreed upon (and voluntarily taken up) or imposed by daily vagaries. Very early you showed a sharp critical sense and your attitudes were rational, logical and reasonable, although individualistic. As time goes by, you learn to make concessions and to offer an essential part of yourself so as to outgrow the "every man for himself" principle. Ordeals are meaningful: people may not respond to your games and your entourage may thwart your plans and your ambitions... You may need to achieve the "old souls" detachment, those beings who have learnt that only essentials are to be kept – inner life or survival- and who know that this world "petty things" are vain. Better than anyone else, you cope with situations of crisis because, whatever the circumstances, there is a hidden spiritual dimension and a springboard for evolution. You will slowly get to know the art of accepting things without going back on what you have said or done. Compassion and altruism become the central theme of your life.

Lilith or the Dark Moon

The Black Moon is the spark of refusal and distance that is dormant in all of us. Depending on the sign where she is found in your chart, she highlights the desire to transform and to sublimate a part of your life. The Black Moon is unfathomable and mysterious. She gives a different dimension to the sector she touches. Her manifestations are subtle; nonetheless, she is powerful, implacable, demanding to the extreme... The Black Moon is also called Lilith. She is the inner flame of your heroism and insubordination.

The notion of freedom takes a special meaning: to be free does not only mean being able to move as you please here and there, nor does it mean having a few hours of leisure available. Above all, it means being able to lead a spiritual quest, to access a different dimension in life: to encounter, to travel, to love and to never be hampered by contingencies, never be slowed down by daily life. That'll take some doing! The comfortable routine of the contemporary world, in this regard, puts you off.

You are a person thirsting for precision and perfection. Your rebellions are frequent: any mechanism that is not running perfectly smoothly is dismissed. Any person whose attitudes seem inconsistent becomes the object of your refusal. Better than anyone else, you can ridicule social stereotyped models, too conventional and ineffective. It is likely that you often succeed in giving a logical dimension to the craziest situations.

The Part of Fortune in House

The Part of Fortune is a very ancient fictitious point that depends on the lunar phase at the time of birth. The astrological house tenanted is particularly strengthened. In your chart, the Part of Fortune is in the 3rd house: communication constitutes your wealth. You strive to integrate your entourage's experiences, you are in search of a model to follow, of an original ideology or behaviour. Better than anyone else, you can observe your close friends and understand them. Therefore, your destiny hinges on relationships. You can achieve full balance as you make some room for exchanges and dialogues.

Retrograde Planets

The karmic tradition insists on the issues related to the so-called retrograde planets. They are considered to be the inheritance of a past that was not well experienced, a sort of unfinished business. The interpretations of the retrogradation may seem negative or excessive to you. However, you may relate to a scenario that you have often and repeatedly experienced... as if you underwent several setbacks that all have the same cause. Until the day you become aware of it and you can free yourself from it! Through the slow integration of these planetary energies, you will be able to overcome your difficulties and to pay your karmic debt. Actually, each retrograde planet highlights an opportunity for evolution. Nothing can be achieved without the will to grow spiritually and to defeat your own demons.

The karma associated with Saturn may border on self-censorship: during your childhood, particularly, you were doubtful of your abilities and your talents. You had a propensity to put yourself in a no-win situation and to under-estimate yourself. Obstacles abound: taboos and prohibitions of all kind slow down your evolution. Little by little, you learn to re-evaluate your possibilities and to gain more self-confidence. Your personal rigour then turns out to be constructive: you are not destabilized by life ordeals and you practice a self-discipline that favours steady evolution. Although your path may be steep, it is nonetheless safe.

Uranus was retrograding on the day of your birth: you have the soul of a rebel and your behaviour may often be tyrannical or extremist. Your manner has brought you setbacks. You lack the flexibility that spares you the pain of forcing your ways through events. The danger may be that you get trapped into rigid patterns and into personal logics incompatible with others'. This is precisely what your life's lesson is about: as years go by, your judgments are more qualified and your attitudes become less cut-and-dried, less stubborn. You must lose the essentially individualistic character of your childhood and be more open to other people's ideas and problems. In other words, a path of love. Without losing your remarkable resolution, you must practice some form of renunciation and be sensitive to various logics that constitute the wealth of your social life.

Pluto retrograde suggests power issues and mishandled relations: for you, everything comes down to power struggles, submission and domination, Machiavellian manoeuvres, including within your couple... The results are complex behaviours and an obsession for the power to influence people. Yet, life teaches that you must simplify your relations and adopt more transparent attitudes and healthier desires... As years go by, you will tend towards more simplicity and you will slowly discover that human energy can, and must, be at the service of the good, or of well being, in compliance with our individual progression.

N.B: modern astrology attaches less and less importance to the principles of retrograding planets.

Conclusion

A few remarks are needed here in order to allow you to fully take advantage of your astrological portrait: firstly, do not forget that a birth chart is also a photograph of the sky at birth and a structure that not only contains the personality's characteristics, but also its potential evolution.

We all know that, in real life, people begin to know themselves when they are in their forties, or even later. Likewise, several traits of character in a portrait may seem surprising: in most cases, it means that such features are not yet developed.

Some personalities reveal themselves late in life, whereas others are more precocious. It must be remembered that psychological structures are in a state of continuous evolution because they are influenced by unfolding events and gradual maturity. We can never underline strongly enough the "mobile" nature of the personality, throughout a lifetime.

On the other hand, it is difficult to discriminate what is "already present" at this moment in your life when you are reading your chart's interpretation, from what will appear later in the logic of your evolution: you must sort out all the pieces of information provided and, in most cases, you will see that your astrological portrait is helpful for your endeavours to know yourself better.

Finally, several readings of an astrological portrait are usually necessary in order to absorb all its different meanings and to evaluate the relevance of each character trait.

In any case, better self-knowledge obviously contributes to faster personal blossoming, and it is undoubtedly one of astrology's major roles: contributing to know oneself better, in order to improve more rapidly, to deal with one's weaknesses and to avoid its drawbacks, and to take advantage of one's assets as efficiently as possible.
