

**Stéphanie of Monaco's
Astrological Portrait**



Stéphanie of Monaco's Astrological Portrait



Introduction	2
Your Planets, Houses, Aspects, and Natal Chart	4
Preamble	7
Your Planetary Repartitions	8
Your Dominant Modes and Elements	9
Your Dominants: Planets, Signs and Houses	10
Your Style, Behaviour, and Peculiarities	14
Your Sensitivity	18
Your Affectivity	19
The Way You Take Action and Your Sexuality	21
Your Intellect and Your Communication Style	22
Your Goals, Motivations, Career, and Destiny	23
Your Assets and Your Part of Joviality	26
Your Serious Side	26
A Few Special Points	27
Your Isolated Planets	28
Annex 1: Your Minor Dominants	29
Annex 2: Karmic Study	33
Conclusion	36



Stéphanie of Monaco's Astrological Portrait

Introduction

To fully benefit from this portrait, we suggest that you read its introduction and its preamble carefully, and then that to take the time to soak up the interpretations of each chapter. Given the large number of texts, which mirrors the human being's complexity, you may need to go through the contents several times, so as to get a good grasp of their meaning and to know yourself better. This will reward your patience.

The purpose of this report is to describe your psychological portrait and to highlight the most fundamental features on the personal area. The report begins with the analysis of your planetary dominants and outlines your personality's general traits before going into further detail. Minor dominants are analysed at the end of Annex 1, for purposes of clarity. Your report then delineates the various facets of your personality:

In general, even when relationships are not involved, we express ourselves and we feel according to our character and our personal motivations: this is indicated by the Ascendant and the Sun sign which both give details on the way we function. They shed a tremendously important light which allows to figure out your personality. Here, we describe your Sun sign (your inner self), your Ascendant (your behaviour as seen by others), and the ruler of the Ascendant (interesting additional pieces of information about the style of your personality). These descriptions alone cover nearly a third or a half of your psychological signature, depending on your natal chart characteristics.

Then, we address your sensitivity, or in other words, the way you receive things and how you express your emotions ; it works as a constant filter for all your exchanges, even when it becomes a more secondary element in your amorous relationship, because at that moment, affectivity prevails. Sensitivity is the way you perceive things, it is your radar, your daily mood, and at the same time, it indicates how you react to your entourage, on a daily basis. It is what others immediately see of you. In the second paragraph, we explain in which areas of life your sensitivity and your emotions are strongest, therefore, where you are most vulnerable.

After this, it is your affectivity, the way you love and how you charm, that comes into play as soon as you fall in love: the first part indicates its basic structure or its main form. The second part describes the areas where it is best expressed and how you display it, according to your personality.

A third fundamental area deals with your mode of action and your sexuality: how you behave, how you manage to obtain what you want, what kind of desires you have. There are twelve possibilities, very

different from one another. The study discloses the specific one that applies to you. In the second paragraph, we explain in which life areas you may most efficiently take advantage of your capacity for action and for conquest.

Your ways of communicating and of thinking are obviously among the major elements that must be integrated into the delineation and the description of your personality. Indeed, they influence your general behaviour and may modify or enhance the image your project (for instance, extraversion may “compensate” a weak affectivity, but a huge number of cases are possible). An additional chapter indicates the favourite areas where you enjoy communicating, thinking and meeting with people.

Besides, we analyze an even more personal aspect that is important to define and understand what may occur within your couple: each of us have a centre of interest, a privileged manner to be fulfilled or to achieve our destiny; this main motivation is indicated by the positions of your Sun and your chart ruler in the astrological houses and we provide you with its detailed description.

A natal chart contains the potential for specific fulfilment and a whole range of assets, protections and qualities. How does the lucky factor manifest in your personality? In which area can you best exploit your qualities? The answers are precisely revealed to you in this chapter.

On the other hand, we all feel in us a part of vulnerability, doubts and fears. How does this part of solemnity or serious side play out? How is it possible to handle it in order to evolve and to get rid of useless elements? All this information is provided to you in these two paragraphs.

Then, you can discover three additional traits of your personality that must be considered as secondary ones. They deal with your predispositions, which means that they need to be triggered by external events because they are not influenced by your will; let's call it a part of fate. Please, bear in mind that your destiny can unfold only in accordance with what you are: therefore, even if they belong to your more unconscious self, these characteristics are parts of you, definitely.

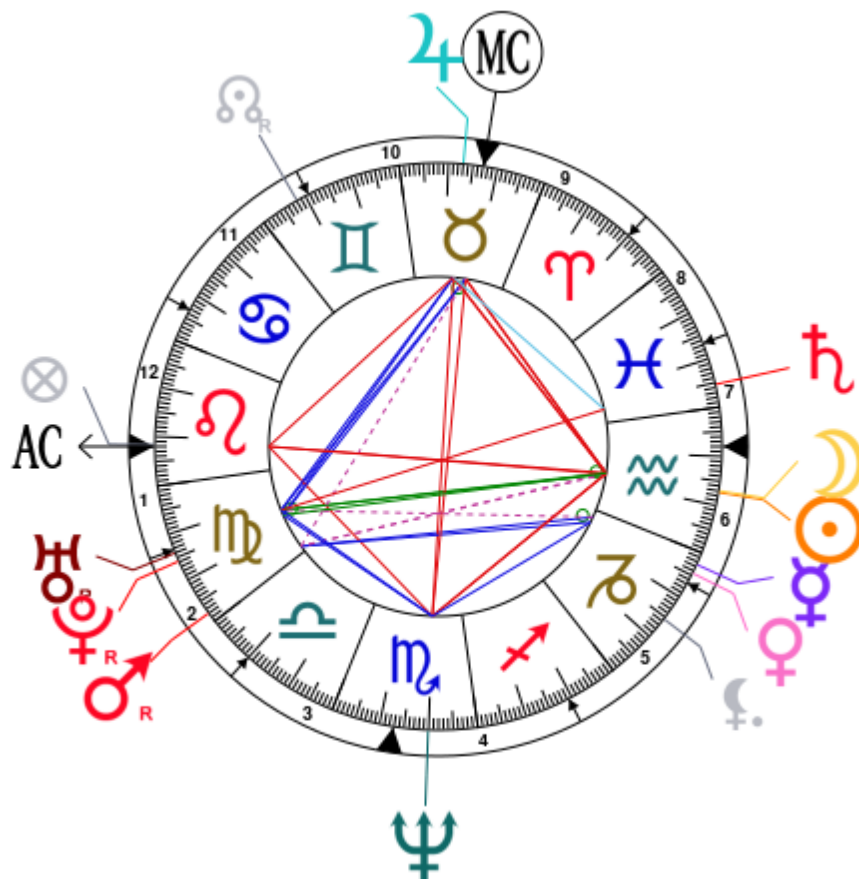
The karmic chart complements the psychological portrait or natal chart. It is based on the positions of the Lunar Nodes, the Black Moon, and the Part of Fortune. These elements of the chart, sometimes referred to as fictitious points, provide information about the spiritual meaning of your destiny. Owing to the fact that we all have in us acquired knowledge and the urge to go on a quest, our life is an evolutionary journey... However, these texts must be read with great caution: this is the reason why you will find this analysis in the Annex 2 of your report.

Your Planets, Houses, Aspects, and Natal Chart

Stéphanie of Monaco, born February 1, 1965, at 06:25 PM, Monte Carlo, Monaco [7.25E ; 43.45N ; 1E00]

Natal Planets				In House	Natal Houses (Placidus)	
☉ Sun	12°40'	♒ Aquarius	House 6	House 1	22°00'	♌ Leo
☾ Moon	13°02'	♒ Aquarius	House 6	House 2	13°17'	♍ Virgo
☿ Mercury	27°26'	♑ Capricorn	House 6	House 3	9°55'	♎ Libra
♀ Venus	25°30'	♑ Capricorn	House 6	House 4	12°49'	♏ Scorpio
♂ Mars	27°57' R	♍ Virgo	House 2	House 5	19°19'	♐ Sagittarius
♃ Jupiter	16°57'	♉ Taurus	House 10	House 6	23°15'	♑ Capricorn
♄ Saturn	4°38'	♓ Pisces	House 7	House 7	22°00'	♒ Aquarius
♅ Uranus	14°01' R	♍ Virgo	House 2	House 8	13°17'	♓ Pisces
♆ Neptune	19°55'	♏ Scorpio	House 4	House 9	9°55'	♈ Aries
♇ Pluto	15°49' R	♍ Virgo	House 2	House 10	12°49'	♉ Taurus
♁ Node	21°55' R	♊ Gemini	House 11	House 11	19°19'	♊ Gemini
♇ Lilith	14°35'	♑ Capricorn	House 5	House 12	23°15'	♋ Cancer
AS AS	22°00'	♌ Leo				
MC MC	12°49'	♉ Taurus				

In keeping with the common practice, we consider that a planet posited within 1 degree of the next house belongs to that house. We allow an orb of 2 degrees for the ASC and the MC.



List of Your Active Planetary Aspects

Please find below the list of all the active inter-aspects which are interpreted in this report, in addition to your planets in sign, in house, and all your planetary dominants. Since the aspects between slow-moving planets are of a collective nature, they are not displayed, in compliance with our interpretation rules.

- ★★★★★ Sun conjunction Moon, orb 0° 22'
- ★★★☆☆ Sun sesqui-quadrate Mars, orb -0° 17'
- ★★★☆☆ Sun square Jupiter, orb 4° 17'
- ★★★☆☆ Sun inconjunction Uranus, orb -1° 21'
- ★★★☆☆ Sun square Neptune, orb -7° 15'
- ★★★★★ Sun opposite Ascendant, orb -9° 2'
- ★★★★★ Sun square Midheaven, orb 0° 09'
- ★★★☆☆ Moon sesqui-quadrate Mars, orb 0° 04'
- ★★★☆☆ Moon square Jupiter, orb 3° 54'
- ★★★☆☆ Moon inconjunction Uranus, orb -0° 59'
- ★★★☆☆ Moon square Neptune, orb -6° 52'
- ★★★☆☆ Moon inconjunction Pluto, orb -2° 46'
- ★★★★★ Moon opposite Ascendant, orb -8° 57'
- ★★★★★ Moon square Midheaven, orb -0° 12'
- ★★★★★ Mercury conjunction Venus, orb 1° 56'
- ★★★★★ Mercury trine Mars, orb -0° 3'
- ★★★☆☆ Mercury sesqui-quadrate Uranus, orb -1° 34'
- ★★★★★ Venus trine Mars, orb -2° 27'
- ★★★★★ Venus sextile Neptune, orb 5° 35'
- ★★★☆☆ Mars sesqui-quadrate Midheaven, orb 0° 07'
- ★★★★★ Jupiter quintile Saturn, orb 0° 19'
- ★★★☆☆ Jupiter square Ascendant, orb 5° 03'
- ★★★★★ Jupiter conjunction Midheaven, orb 4° 07'
- ★★★★★ Uranus trine Midheaven, orb 1° 11'
- ★★★☆☆ Neptune square Ascendant, orb -2° 05'
- ★★★★★ Neptune opposite Midheaven, orb -7° 05'
- ★★★★★ Pluto trine Midheaven, orb 2° 59'

Meaning of Stars

Stars indicate the strength of the aspects. Two solid coloured stars (there are half-stars also), mean that the aspect is powerful enough to be noticed at the first reading.

We strongly advise that you read the paragraphs displaying less than two stars later on, after you have absorbed the full import of the other texts.

The yellow colour indicates a soothing and conciliating aspect, and the red colour, a dynamic and tense aspect. The red aspects enable you to evolve, to take action, and to learn to turn your "weaknesses" into assets through your life experiences. The yellow aspects are innate strengths on which you rely in order to grow better with the former...

Preamble

When interpreting a natal chart, the best method is to start gradually from general features to specific ones. Thus, there is usually a plan to be followed, from the overall analysis of the chart and its structure, to the description of its different character traits.

In the first part, an overall analysis of the chart enables us to figure out the personality's main features and to emphasize several points that are confirmed or not in the detailed analysis: in any case, those general traits are taken into account. Human personality is an infinitely intricate entity and describing it is a complex task. Claiming to rapidly summarize it is illusory, although it does not mean that it is an impossible challenge. It is essential to read a natal chart several times in order to absorb all its different meanings and to grasp all this complexity. But the exercise is worthwhile.

In brief, a natal chart is composed of ten planets: two luminaries, the Sun and the Moon, three fast-moving or individual planets, Mercury, Venus and Mars, two slow-moving planets, Jupiter and Saturn, and three very slow-moving planets, Uranus, Neptune and Pluto. Additional secondary elements are: the Lunar Nodes, the Dark Moon or Lilith, Chiron and other minor objects. They are all posited on the Zodiac wheel consisting of twelve signs, from Aries to Pisces, and divided into twelve astrological houses.

The first step is to evaluate the importance of each planet. This is what we call identifying the dominant planets. This process obeys rules that depend on the astrologer's sensitivity and experience but it also has precise and steady bases: thus, we can take into account the parameters of a planet's activity (the number of active aspects a planet forms, the importance of each aspect according to its nature and its exactness), angularity parameters; (proximity to the four angles, Ascendant, Midheaven, Descendant and Imum Coeli or Nadir, all of them being evaluated numerically, according to the kind of angle and the planet-angle distance) and quality parameters (rulership, exaltation, exile and fall). Finally, other criteria such as the rulership of the Ascendant and the Midheaven etc. are important.

These different criteria allow a planet to be highlighted and lead to useful conclusions when interpreting the chart.

The overall chart analysis begins with the observation of three sorts of planetary distributions in the chart: Eastern or Western hemisphere, Northern or Southern hemisphere, and quadrants (North-eastern, North-western, South-eastern and South-western). These three distributions give a general tone in terms of introversion and extraversion, willpower, sociability, and behavioural predispositions.

Then, there are three additional distributions: elements (called triplicity since there are three groups of signs for each one) - Fire, Air, Earth and Water - corresponding to a character typology, modality (or quadruplicity with four groups of signs for each one) - Cardinal, Fixed and Mutable - and polarity (Yin and Yang).

There are three types of dominants: dominant planets, dominant signs and dominant houses. The novice thinks astrology means only "to be Aries" or sometimes, for example, "to be Aries Ascendant Virgo". It is actually far more complex. Although the Sun and the Ascendant alone may reveal a large part of the character - approximately a third or a half of your psychological signature, a person is neither "just the Sun" (called the sign) nor just "the first house" (the Ascendant). Thus, a particular planet's influence

may be significantly increased; a particular sign or house may contain a group of planets that will bring nuances and sometimes weaken the role of the Ascendant, of the Sun sign etc.

Lastly, there are two other criteria: accentuations (angular, succedent and cadent) which are a classification of astrological houses and types of decanates that are occupied (each sign is divided into three decanates of ten degrees each). They provide some additional informations.

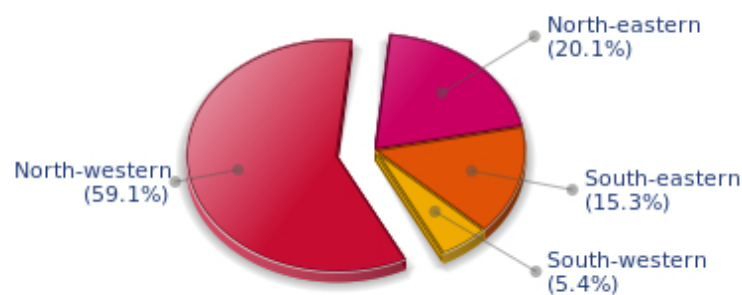
These general character traits must not be taken literally; they are, somehow, preparing for the chart reading. They allow to understand the second part of the analysis, which is more detailed and precise. It focuses on every area of the personality and provides a synthesis of all the above-mentioned parameters according to sound hierarchical rules.

As explained in the introduction of your Psychological Portrait report, minor dominants are analysed at the end of Annex 1, for purposes of clarity.

Your Planetary Repartitions

Each quadrant is a combination of the four hemispheres of your birth chart and relates to a character typology. The Southern hemisphere – the top of your chart, around the Midheaven – is associated with extraversion, action, and public life, whereas the Northern hemisphere prompts to introversion, reflexion, and private life. The Eastern hemisphere – the left part, around the Ascendant – is linked to your ego and your willpower, whereas the Western hemisphere indicates how other people influence you, and how flexible you are when you make a decision.

Your Four Quadrants

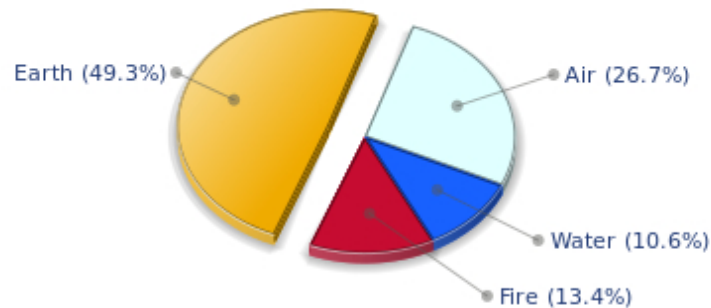


Stéphanie of Monaco, the nocturnal North-western quadrant, consisting of the 4th, 5th and 6th houses, prevails in your chart: this sector favours creativity, conception and some sort of specialization or training, with helpfulness and relations as strong components. You need others' cooperation in order to work properly, although you are not very expansive: creating, innovating and thinking are what matter most to you because this self-expression enriches you and totally satisfies you.

Your Dominant Modes and Elements

Stéphanie of Monaco, here are the graphs of your Elements and Modes, based on planets' position and angles in the twelve signs:

Your Four Elements

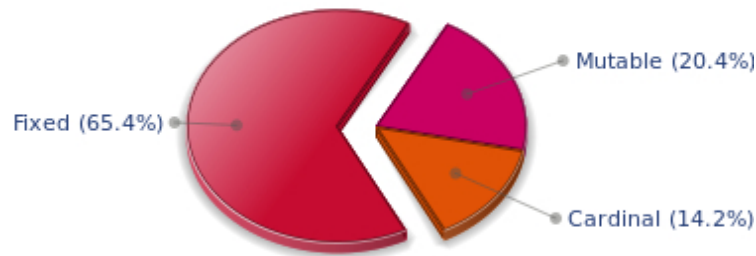


Like the majority of Earth signs, Stéphanie of Monaco, you are efficient, concrete and not too emotional. What matters to you is what you see: you judge the tree by its fruits. Your ideas keep changing, words disappear, but actions and their consequences are visible and remain. Express your sensitivity, even if it means revealing your vulnerability. Emotions, energy and communication must not be neglected; concrete action is meaningless if it is not justified by your heart, your intellect or your enthusiasm.

Cheers for communication and mobility, Stéphanie of Monaco! The predominance of Air signs in your chart favours and amplifies your taste for relations and for all kinds of short trips, whether real (travels) or symbolic (new ideas, mind speculations). You gain in flexibility and adaptability what you lose in self-assertion or in pragmatism.

The twelve zodiacal signs are split up into three groups or modes, called quadruplicities, a learned word meaning only that these three groups include four signs. The Cardinal, Fixed and Mutable modes are more or less represented in your natal chart, depending on planets' positions and importance, and on angles in the twelve signs.

Your Modes



The Fixed mode corresponds to a majority of elements in your chart, Stéphanie of Monaco, and represents the desire for security and durability: you are able to concretely appreciate a situation and its stability. You definitely prefer to play the role of a loyal, obstinate and hard-working person, rather than to try new and risky experiences - beware, however, not to confuse obstinacy with intransigence. You structure, cement, and strengthen everything you find on your way: it is your nature, although you are not especially interested in swiftness: slow and steady...

Your Dominants: Planets, Signs and Houses

The issue of dominant planets has existed since the mists of time in astrology: how nice it would be if a person could be described with a few words and one or several planets that would represent their character, without having to analyse such elements as rulerships, angularities, houses, etc!

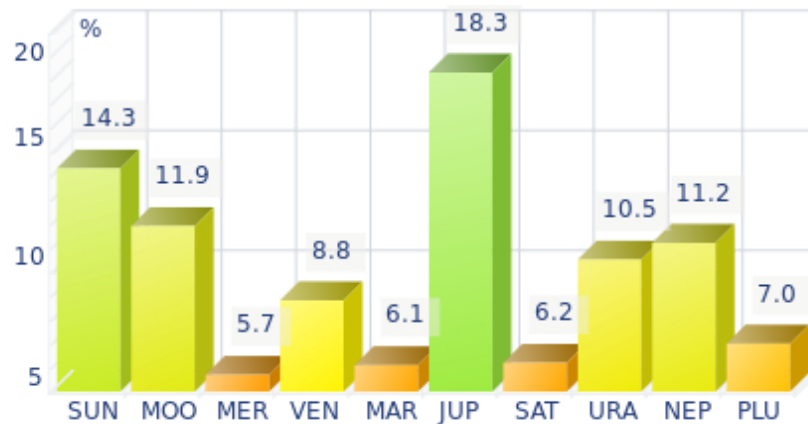
The ten planets - the Sun throughout Pluto - are a bit like ten characters in a role-play, each one has its own personality, its own way of acting, its own strengths and weaknesses. They actually represent a classification into ten distinct personalities, and astrologers have always tried to associate one or several dominant planets to a natal chart as well as dominant signs and houses.

Indeed, it is quite the same situation with signs and houses. If planets symbolize characters, signs represent hues - the mental, emotional and physical structures of an individual. The sign in which a planet is posited is like a character whose features are modified according to the place where he lives. In a chart, there are usually one, two or three highlighted signs that allow to rapidly describe its owner.

Regarding astrological houses, the principle is even simpler: the twelve houses correspond to twelve fields of life, and planets tenanted any given house increase that house's importance and highlight all relevant life departments: it may be marriage, work, friendship etc.

Stéphanie of Monaco, here is the evaluation diagramme for your planets:

Your Dominant Planets



The three planets that are most highlighted in your chart are Jupiter, the Sun and the Moon.

Jupiter, the planet of expansion, organization, power and benevolence, is quite emphasized in your chart. Like any Jupiterian, you are warm, open, sociable, consensual, active and optimistic. You can use your self-confidence to erase differences of opinion, and you leave the task of analyzing and perfecting things to specialists. Your role, and you know it since you were young, is to gather, to demonstrate your synthesizing and conciliatory mind, and to naturally reap its fruits - power.

You appreciate legality, social order but also order in general. With you as a leader, every plan or human entity can be organized and structured. You excel at supervising. The Jupiterian type is indeed the politician par excellence, and a positive Jupiter in your chart is synonymous with good integration into society, whatever the chosen path.

Is this idyllic picture really perfect? Certainly not: each planet's typology has its own weaknesses. One of yours is pride, like the Solarian, but your will of expansion at all costs may generate a form of exaggeration in everything, endless pleasure, inappropriate self-confidence that could lead you to rough materialism and the thirst for absurd material comfort - in the worst cases, of course.

One of the dominant planets in your birth chart is the Sun. He symbolizes will, magnetism, sense of honour and dignity. You are a Solar being, and you often display charismatic and leadership qualities. Your warmth and your persuasive power lead you far away from pettiness. You enjoy thinking big and, consequently, you move forward according to what you decide.

Your Solarian weakness may be related to the sin of pride or to excessive authority. The frontier between pride and vanity is tenuous: be careful not to overstep it and to keep the nobleness of heart that is part of your charm.

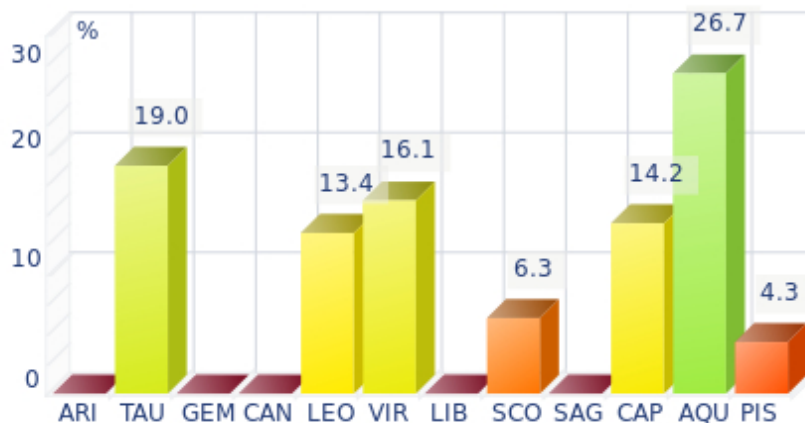
The Moon is one of the most important planets in your chart and endows you with a receptive, emotive, and imaginative nature. You have an innate ability to instinctively absorb atmospheres and impressions that nurture you, and as a result, you are often dreaming your life away rather than actually living it.

One of the consequences of your spontaneity may turn into popularity, or even fame: the crowd is a

living and complex entity, and it always appreciates truth and sincerity rather than calculation and total self-control.

As a Lunar character, you find it difficult to control yourself, you have to deal with your moods, and you must be careful not to stay passive in front of events: nothing is handed on a plate, and although your sensitivity is rich, even richer than most people's, you must make a move and spare some of your energy for... action!

Your Dominant Signs



In your natal chart, the three most important signs, delineated according to the above-mentioned criteria, are, in decreasing order of strength, Aquarius, Taurus and Virgo. They are often prominent because your Ascendant and your Sun are posited there. However, it is not always the case: it may be because they are occupied by a cluster of planets, by a planet near an angle other than the Midheaven and the Ascendant, or because two or three planets are very active and form numerous aspects from these signs. Therefore, you partly take on the three signs' characteristics, which are somehow superimposed on your natal chart, and all the more so if any of the signs in question is highlighted.

Aquarius is one of the most important signs in your natal chart: it endows your personality - at least one of its facets - with originality, to the point of eccentricity in spite of a sometimes distant and humane side. Likeable and impassive at the same time, you are a paradoxical woman, very hard to define because the two planets Uranus and Saturn blend their qualities to create the so complicated and endearing sign that inspires your character. Saturn's seriousness and impassivity is added to Uranus' rebellion, talent, individualism, charisma, extravagance, and unpredictability! One of your main characteristics is that you never open up on a personal basis, but you tend to do so easily in public. You are actually quite strange. Sexy and charming in public, despite your nice and sociable character, you could frustrate many of your admirers in private because of your impossibility to show deep and warm affection, emotions, tears... But appearance and reality are two different things anyway - you are a kind of a genius, or you have at least a tremendous charm with this sign. You have many friends and an active social life. If you are detached in your love life - only in this aspect, since the rest of chart will confirm it or not - this is no big deal!

With the Taurus sign so important in your chart, you are constructive, stable, and sensual. Good taste, sense of beauty, manners, and unfailing good sense - all these qualities contribute to your charm and seductive power. Furthermore, if some people criticize your slow pace and your stubbornness, you rightly reply that this is the price for your security, and that you like the way it is - slow and steady....

Virgo, associated with perfectionism, numbers and reason, is among your dominant signs: you inherit its sense of responsibility and tidiness, a clear mind, an unflinching logic, as well as a need to be useful and to fulfil your task to the best of your abilities. Obviously, people may think that you are too modest or reserved, suspicious or pessimistic because of your exceedingly critical mind, but aren't logic and wisdom great qualities? Of course, they are. Moreover, you keep your feet on the ground, you never behave irrationally and you are helpful and hardworking - what more can you ask for?!

Your Dominant Houses



Houses 6, 2 and 10 are the most tenanted ones in your natal chart. To compute their strength, planets and angles are weighed according to various astrological criteria such as swiftness, activity, angularity, rulership etc. From the analysis of the most tenanted Houses, the Astrologer deduces the fields of activity that are most relevant to you, be it because of what you are experiencing, or what you may experience in the future, or because of your deep inner motivations.

Your 6th house is quite emphasized and indicates interest in work and daily occupations that take up a lot of your time: in analogy with Virgo, this house inclines towards perfectionism and training; somehow, you may be fulfilled through the process of being useful and investing your energy in your work. An environment appealing to you may be involved - your colleagues, for example - or a passion for one of these daily occupations. Medical positions or pets may play a role in your life; or ancillary love affairs too... These are a few possibilities indicated by an important 6th house.

The 2nd house is among your three most tenanted houses: life's material aspects - with everything that is implied in terms of security, appetite for life, desire for possession - are deep-seated and you can never be content with living on love and fresh air. On a more abstract level, you may have similar feelings regarding relationships: possessiveness and jealousy in the worst cases, but also faithfulness and durability.

With a prominent 10th house, your destiny's achievement may be very notable: the 10th house represents your career, your public life, and your ambitions. A good deal of your energy may thus be used to successfully implement what you have in mind. Instinctively, you are very keen to make your dreams come true. Sooner or later, you will deal with the public, and your personal achievement will go through trials and ordeals: other people and visible actions.

Your Style, Behaviour, and Peculiarities

What is commonly known as "sign" indicates the position of the Sun in the Zodiac. The Sun highlights all the characteristics of the sign he tenants. According to astrology traditional rules, these characteristics are all the more pure and exact when the Sun is strong in the sign, or when the sign is particularly highlighted within the chart. Here, we indicate the pure characteristics of the sign but you must bear in mind that they may only shed a light on a particular aspect of your personality. Indeed, the sole sign of the Sun, or of the Ascendant, can never describe an astrological chart because it depends on the degree of strength of the said sign in your chart.

Another important point must be underlined. Contrary to the Ascendant, which clearly describes your appearance, your vitality, your physical constitution, your spontaneous behaviour and the image you project, your Sun sign describes your inner self, which you may not completely be aware of, and which may emerge gradually as you mature: it is about your inner personality that you reveal only to the members of your entourage whom you trust. The Sun sign is likely to be the final form of your personality, once it has evolved in line with the energies of the other parts of your chart, the beginning of which is seen in the Ascendant, your external "bark".

The Ascendant is one of the major components of your natal chart. It is the zodiacal sign that rises in the East at the very moment of your birth. To calculate it, it is therefore necessary to know your exact time of birth.

It provides with a wealth of information on your personality. It is one of the key features that allows the analysis of several parts of you, such as your appearance, your character as it is initially perceived and your immediate behaviour. It describes the external aspect of your personality which you always display, but it also describes your physical constitution in the long-term, in other words, your health.

Please be aware that, in spite of the importance of the Ascendant, the accuracy of its description depends on how strongly highlighted it is in your natal chart. We use the entire set of astrological rules to assess the strength of the Ascendant. In most cases, the Ascendant is as revealing as your "sign", i.e., the sign where the Sun is posited at the time of birth.

You were born under the sign of Aquarius and your Ascendant is in Leo

Before broaching the details of the meaning of your Sun and your Ascendant, as a preamble, we offer a brief generic interpretation of their combination in your chart:

Aquarius and Leo occupy opposite parts in the zodiacal wheel. With such a combination of Sun and Ascendant signs, you constantly try to strike a balance between Aquarius' aspiration to free itself from social conditioning and from the needs of its ego, on the one hand, and Leo's will to forcefully and passionately assert its creative individualism, on the other hand. In all circumstances, you remain optimistic and you rely on your ability to take up the challenges facing you. Owing to your Leo Ascendant, when you are in society, you are concerned about the image you project, and you manage to earn people's admiration and respect. However, this need for recognition clashes with your Aquarius, which is deeply attached to its independence and indifferent to people's opinion, hence the reputation as a dropout and eccentric person. Your ethereal and elusive nature disconcerts those who saw only your

Leo mask, definitely endearing and colourful, but quite different from your true self. Honesty and constancy in ideas and actions, along with audacity and generosity, are nevertheless the qualities these two signs have in common. As a result, all these very different facets enable you to keep your equilibrium easily and endow you with irresistible and, at the same time, strange charming powers.

You were born with the Sun in Aquarius

In the sentimental sphere, you are particularly sensitive to the values of friendship, in the sense that you see yourself as a link within a chain, certainly a different and original one, but with no will to flatter your ego or to individually assert yourself. On the contrary, your aim is to immerge yourself in your friendly relations and to participate in projects and ideals of the whole human community.

As you are born under this sign, you are idealistic, altruistic, detached, independent, original, surprising, gifted, contradictory, innovative, humanistic, likeable, friendly, self-confident, impassive, quiet, intuitive, creative, charitable, elusive, disconcerting, generous, tolerant, paradoxical, and you cannot stand any kind of constraint. But you may also be marginal, resigned, distant, utopian, maladjusted, eccentric and cold.

In love, Madam, you are the inquiring sign of the Zodiac. You are cerebral and lively, always on the look-out for novelty or for anything amazing.

You are often more in love with love than you are in love with your partner. You are surprising and unpredictable, now passionate and using your imaginative and mental powers to idealize your relationship and your partner, now cold, suddenly detached and impersonal because you are annoyed by subtle elements that you, and only you, can understand.

You do not stand disappointment and you display great cleverness when you want to suddenly break up when your partner least expects you to do so.

In order to be able to charm you, one must be exceptional, amazing, disconcerting and one must accept to grant you total freedom and independence. Under those conditions only, will you be able to have a long-lasting, stable yet eventful, surprising and harmonious relationship with your chosen partner. Once trust and confidence settle in, you will be fulfilled and you will be hardly recognizable.

The life span of your couple depends mainly on your common tastes: ideally, you should live with a man who actually is your friend and your lover, continuously shifting from one role to the other according to circumstances, and who, at the same time, provides you with a much needed mental stimulation, as well as with warm love.

Your Ascendant is in Leo

Psychologically speaking, your nature is powerful and self-assured. You are a leader whose strength and nobleness naturally arouse your entourage's respect and adherence and your legitimacy is unquestioned. Your sense of commandment, the honour your person constantly exudes, your prestige and your charisma is a whole which puts you into the spotlight wherever you go.

As you are born under this sign, you are proud, determined, wilful, loyal, solemn, generous, ambitious, courageous, heroic, full of vitality, creative, confident, seductive, happy, daring, proud, majestic, honest,

magnanimous, charismatic, responsible, noble, brilliant, radiant, dramatic, affectionate, full of humour, demonstrative, swaggering and self-confident. You can also be domineering, conceited, touchy, authoritarian, stubborn, intolerant, self-centered, irascible, violent, and nonchalant

In love, Madam, you are so proud and you have so much self-confidence that, at the beginning, you will probably need some time to find the partner whom you deem worthy of you.

You shine and you need to be told so; more often than not, your partner, too, must shine... Pre-requisites seem to abound. However, as you mature, you will understand that all that glitters is not gold and that gold may be even more solid when it is less apparent. Then, you will reach higher levels of harmony with your partner.

Your weakness probably lies in your sensitivity to splits, a sort of major ordeal you will not be able to overcome rapidly.

You are a charming partner, with a lot of humour. You are brilliant, bubbling and you receive your guests wonderfully well, all the more so if they belong to your world. Your children will be particularly important to you and they will immensely contribute to your happiness.

The ruler of your chart is in Aquarius

The ruler of the Ascendant, also referred to as the chart ruler, brings a few interesting nuances to the meanings provided by the Sun and the Ascendant. The sign in which the ruler of the Ascendant is posited fine-tunes the style of personality described by the Sun and the Ascendant. It may strengthen it if the sign is identical to either of them.

In your chart, the ruler of the Ascendant is the Sun. This specific feature means that the Sun's characteristics previously delineated are strengthened.

Aspects to your Ascendant

Several planets form an aspect with your Ascendant, Stéphanie of Monaco. Therefore, in their specific way, they modify your behaviour and your personality, which do not take on the pure characteristics of your Leo Ascendant only, but which are a blend of its characteristics with those of the said aspects.

★★★★★ Neptune square Ascendant, orb -2° 05'

Neptune is in dissonance with your Ascendant, Stéphanie of Monaco. You may have difficulties in controlling your emotions, and you tend to hesitate about the behaviour to adopt in society. In some circumstances, you distrust everyone, yourself and other people, without knowing the reason why. Keep your feet on the ground and do not allow your imagination to carry you too far away from sheer reality! No one nurtures bad intentions towards you. This is something you must realise if you do not want to get worked up about... nothing.

★★★★★ Jupiter square Ascendant, orb 5° 03'

A dissonance between Jupiter and the Ascendant is not too serious, Stéphanie of Monaco. In some circumstances, it may cause your behaviour or your opinions to be a bit exaggerated when you are in society. Therefore, you may come across as too proud or excessive. It is up to you not to overdo, so as not to arouse your entourage's incomprehension. This excess may also translate into a marked taste for

pleasures or good food...

★★★★★ Moon opposite Ascendant, orb -8° 57'

The Moon is in opposition to your Ascendant, Stéphanie of Monaco. It is not a dissonance, strictly speaking, since at the same time, the Moon is in conjunction with your Descendant. Your sensitivity is oriented towards other people, and you are endowed with some sort of radar which enables you - sometimes too quickly - to feel other people's sympathy or hostility towards you. As a consequence, although your behaviour is flexible and adaptive, it is also less self-confident than it would be if you were less concerned about gossips.

★★★★★ Sun opposite Ascendant, orb -9° 2'

The opposition of the Sun to your Ascendant cannot be really interpreted as a dissonance, Stéphanie of Monaco, but rather as a conjunction with your Descendant, or DS, the angle symbolising "other people". Thus, although your capacities for self-assertion, decision-making and shining may not entirely match your natural demeanour as an isolated individual, they can be wonderfully expressed through unions and associations. Indeed, there is a discrepancy between the Self and your behaviour. It is obvious that this aspect slightly tones down magnetism and strength, but at the same time, it puts you at the service of other people in a way that neither alters your personal value, nor puts you in tricky situations.

Your Sensitivity

Your sensitivity is devoid of infatuation or carelessness, Stéphanie of Monaco; you belong to the cerebral type and, due to your needs for inner security and for freedom, you consider feelings and emotions as burdens. You are apparently phlegmatic and almost detached. However, your swift reactivity and your fertile imagination make you appreciate friendly gatherings with numerous and varied exchanges. You do not wear your heart on your sleeve. At first, you seem cold but those who know you are aware of your very original and unique sense of humour. Your receptiveness is remarkable. Your observation talents and your detachment work wonders in the defence of your anti-conformist and rebellious ideas. Your stubbornness is obvious and it is very difficult to make you change your mind because you are affectively too vulnerable: it would require lengthy and thorough argumentations aiming at your intellect...

Stéphanie of Monaco, it is likely that you are popular in your work environment, and you may even be considered to be some kind of star by your colleagues. Or, if it is not the case, you have a clear tendency to react emotionally, very quickly and strongly in this sphere. At work, you need to feel liked and appreciated and to be shown accordingly!

You are mobile and changeable in your profession, and to tell the truth, your everyday life is full of surprises. Sensitive and imaginative, you are vulnerable to others' opinions. Health issues concern you more than they should; beware of not becoming a hypochondriac, some day...

★★★★★ Sun conjunction Moon, orb 0° 22'

This aspect is a strong homogeneity factor: the image you project is in conformity with your real nature and does not upset your basic balance. This is probably the cause of your feeling at ease, your consistent behaviour and your determination to remain your true self, regardless of external pressures and whatever is expected from you. At best, your will and your sensitivity are in harmony, your unconscious abilities are mobilized and controlled by your conscious will, with no imbalance. However, it is important to avoid the traps of self-satisfaction that would be harmful to your real exchanges and would lock you up in comfortable and rigid schemes. It is possible to remain natural and yet, not be content with the sole well being of those who never cheat themselves.

★★★☆☆ Moon square Jupiter, orb 3° 54'

When this aspect is not well integrated, there is a tendency to conceal your true nature and to cheat on your true self. Appearance, emphasis and games hide the essence of your aspirations and may trouble your intimate life. Despite your apparent joviality, it is often difficult for you to live in conformity with your inner demands. Actually, it is difficult for you to reconcile your social life with your private life. The former excludes the latter. To properly integrate this aspect, you must learn to harmonize your external attitudes (social and professional ones) with your daily rhythms. It implies that, when you are in a trustworthy situation such as your family or your home, you accept to behave differently from when you are in a larger context, exposed to social stress. You must neither ignore them, nor should you favour them.

★★★☆☆ Moon sesqui-quadrant Mars, orb 0° 04'

This Moon-Mars dissonance suggests touchiness and sometimes, aggressiveness. You are irascible and very sensitive to all sorts of threats and dangers. You react very quickly, too hastily. To protect your well being, you must learn to control your mood, to coordinate your actions and to balance your opinions. You are often disturbed by plain facts: either you seek refuge in your intimate realm and refuse to face the truth or, on the contrary, you are engaged in altercations, which forbid all tranquillity. It is important

that you balance these two tendencies and that you alternate moments of action with phases of carelessness and relaxation. These two attitudes are relatively irreconcilable.

★★★★★ Moon inconjunction Uranus, orb -0° 59'

The Moon and Uranus intrinsically share little in common: they get along as well as fire and water! It is difficult for you to reconcile your desire for well being and intimacy with your destiny's dazzling passions and thunderbolts. You may feel that your intimate and family realm hampers your freedom. There is a potential for crises, explosions or splits. The desire for independence does not get on well with security concerns. There may be strong temptations endangering your very life foundations and you may embark upon a liberating and personal adventure. However, you fear rash decisions. Your need for security may temper your impulses and put a brake on your individualistic aspirations. To harmonize these tendencies within your intimate life, you must leave yourself enough room for personal expression or for an activity of your own. Otherwise, as days go by, built-up tensions may jeopardize the quiet course of your life.

★★★★★ Moon square Neptune, orb -6° 52'

This Moon-Neptune dissonance wonderfully turns on the poetic soul, the exhilaration of feelings and dreams... and disturbs your practical life, as well as the management of contingencies. You do not lack inspiration but your reasons of living may be beyond your entourage's understanding! Bohemian life is pleasant but it is probable that you experience muddled situations. Your aims are noble and your intentions are very good. But you may not have the will to turn them into reality. It is important that you are wary of artificial paradises: escaping in the imaginary is not necessarily the best solution for problem solving. You are in search of an inaccessible tranquillity and you tend to procrastinate chores. Nevertheless, facts remain present and you may see that non-interventionism can only increase your difficulties. You must put an end to this vicious let-go circle. This does not imply that you have to forsake your dreams or to repress your very rich sensitivity.

★★★★★ Moon inconjunction Pluto, orb -2° 46'

This planetary configuration causes distrust (Plutonian distance) towards individuals, groups, or your own family environment (lunar values). It may bring about a feeling of affective or relational wound. The feeling of security is absent, or fragmented or illusive. How is it possible to feel integrated whereas you know that you are different and on your own? It is the myth of the « ugly duckling », with its different specific characteristics, an alien to its origins and its roots. It is important that you accept your differences and that you have them accepted by others, without forsaking your essential values. This is how you can exercise your group ownership without allowing them to exclude you or to repress your secret determinations. When this aspect is well integrated, it is a factor of lucidity for your emotions. You perceive without gullibility what is really at stake in your intimate relationships and the flaws of your environment. The fact that you do not readily trust people spares you many traps and delusions.

Your Affectivity

In your chart, the Sun is in Aquarius and Venus, in Capricorn. The association of these two signs is constructive but contradictory. Your affectivity is complex and highly polarized. The desire of the Sun in Aquarius is constantly evolving, whereas Venus in Capricorn needs stability, structure and integration. One of the poles is wide open to all possibilities and swiftly responds to any new stimulation. The other pole needs years to fully develop. There is a distance between your affective ideal, which values an ever-evolving relationship, and your desires, which need a lot of time. When this configuration is not well

integrated, it may bring about a series of experiences, which start in an exciting atmosphere but are unable to satisfy your Venusian sensitivity. However, a happy complementarity can be found with this zodiacal duet if Aquarius is allowed enough room and if Capricorn is allowed enough time. Although it is quite a challenge, it is worth the idealism that both signs embody. In any case, your affectivity needs a relationship with deep-seated understanding and closeness.

Stéphanie of Monaco, it is obvious that you do not easily fall in love. But when you do, your feelings are deep, quiet, serious, and above all, lasting. Your need for security is indispensable for your well being and to enable you to give. You offer security and stability with your sense of duty even though you mix up responsibility and love. The charm of your partner does not only include physical features or aroused sentimental attraction, but also intellectual and moral qualities: you fiercely need authenticity and seriousness because this is the way you are. In general, your loves are not numerous and you become able to express yourself quite late in life. Your quiet and stable feelings are really worth it. If you do not get what you want, the danger is that you may seek refuge in cynicism and that you isolate yourself.

Stéphanie of Monaco, the position of your Venus is quite particular in the sense that the nature of the planet does not blend easily with the house symbolism. Indeed, Venus deals with feelings and the absence of limitations and control, whereas the 6th house deals with constraints, daily life and work, lifestyle, subjection and service rendered to others: as a consequence, feelings are associated with a framework or with obligations, but this is not necessarily disturbing. More often than not, you meet your spouse or your romantic partner in a setting related to work, an association, or a specific occupation (leisure or rather common work project, etc.). It seems that, for you, such contexts can more easily lift the inhibition or the natural restriction produced by this house-planet combination. Besides, it is commonly believed that amorous adventures with servants (i.e. with subordinate or “socially inferior” persons), or with colleagues, are very much favoured by this configuration. In addition, if no adverse aspect affects Venus in the 6th house, your daily life is entertaining, you appreciate your work, you easily combine business with pleasure, experiencing nice encounters and discovering constantly renewed and enthralling centres of interest. Most of the time, you can count on the favour, the dedication and the esteem of your colleagues, particularly women. Therefore, it is in your interest to work. You are one of those rare persons who approach work as a daily pleasure and never as a constraint because you probably know how to aim at what you like. Just beware not to fall in love too often in this context !

★★★★★ Mercury conjunction Venus, orb 1° 56'

This aspect sensitizes you to games of seduction. You like to multiply romantic undertakings, you invent new reasons to seduce or to be seduced. Although your romantic life is not a model of stability, it is full of discoveries, varied emotions, both sensual and cerebral. You know how to earn your entourage's liking through your acute sensitivity. You play around with feelings, with relationships and with love... Mercury and Venus commonly share the capacity to sensitise to human topics. Your receptivity towards others is high. Your broad-mindedness goes hand in hand with your heart's generosity. You pay particular attention to the way people look at you and the effect you make when you meet or exchange with someone. Actually, you expect a lot from others: acknowledgement of your qualities, as well as esteem and consideration. You may also be touchy beyond what you may give to think. In many instances, relationship games may turn out to be more serious than expected.

★★★★★ Venus trine Mars, orb -2° 27'

With this aspect, innate affective behaviours prevail over opportunism and calculations. You do not cheat with feelings and you prefer to be guided by your likes ... or your dislikes. Love is neither to be reasoned

upon nor to be explained. It is important to experience one's passions spontaneously and to give free rein to the heart's tumultuous manifestations as well as to the body's demands. In other words, to be one's true self in the "now". You need to live intensely, to try all kinds of situations, sometimes to get hurt. Your sensitivity is the driving force behind your decisions and your actions. Real experiences are worth the best intellectual concepts. Spurred by your thirst for emotions, you try to build your life on bases that match your desires. Here, the trap may be that you pay too much attention to your moods and affects. But without them, life would be so dull. Even though emotionalism betrays you occasionally, it remains your best ally.

★★★★★ Venus sextile Neptune, orb 5° 35'

Your sentimental life unfolds like a strange dream. Love is too delicate to be tamed or controlled. You follow your heart impulses in an idyllic ambiance, far from reality's ordinary constraints, far from conventions and conformism. You exude a particular charm, discreet and subtle. But your affectivity may be disconcerting. You are very sensitive to marks of affection and tenderness, although you are aware that love cannot be bought or won. What is meant to be will be and it is impossible to know the hows and the whys behind a prevailing harmony. The obvious danger is that you may refuse to make any effort in such conditions. Living as a couple must feel natural and you do not need to objectively build the foundations of a relationship. You are an idealist and you dream of an affective paradise, which may be too good to be true...

The Way You Take Action and Your Sexuality

Stéphanie of Monaco, you skilfully make use of your energy and you are like the arrow that reaches its target with great precision: with piercing eye and sharp mind, you take action meticulously and efficiently. Like the surgeon with his scalpel, you know exactly what you want and you belong to the category of specialists, not the generalists. Critical, picky, extremely organized, you want to foresee and to analyze. You prefer to master your business too well rather than not enough, even if you must put a huge, sustained, long lasting effort into it. Sexually, you remain fanatical about cleanliness. You may be prone to fantasies such as fetishism. Your love life is fine if you avoid the unforeseen events that you loathe.

Stéphanie of Monaco, your capacity for action perfectly matches your personal enrichment and enhances your earning abilities! It is easy for you to engage into fights aiming at ensuring your material security, as it is the best outlet for your energy: it must serve a purpose, otherwise why bother? Consciously or not, your ardour is going full steam ahead for the success of your business and the protection of your interests.

This energy may also be understood in a figurative sense, and in that case, it involves your affective, family or professional security and has no direct link to money. You may be possessive, and you defeat those who intend to come too near to what belongs to you.

In any case, you are well-equipped and you usually get what you want. This is a valuable asset throughout your life because, indirectly, it turns you into a more independent person who does not need any protection..

★★★★★ Sun sesqui-quadrate Mars, orb -0° 17'

This aspect shows impulsiveness, a fiery character and sensitivity all on edge. Excess of strength and of energy may jeopardize your life balance and cause impulsive and unconsidered actions. Your ideals are not always in line with your deeds. You are certainly reactive and you stand for yourself heroically. But your untimely fits of anger may worsen existing tensions and bring about uncontrollable situations. Facts contradict your aspirations. When this configuration is properly reined in, it becomes an inexhaustible source of passion and energy.

Your Intellect and Your Communication Style

You need to concentrate on a subject, Stéphanie of Monaco, to deepen your research and to follow your reasoning through with persistence and determination. You are the very type of the thinker who needs time and isolation to meditate at length and allow her serious, methodical and rigorous mind to show its worth. Your feet are firmly planted on the ground and to get your attention, ideas must be followed by implementation, for instance as in the case of mathematics applied to physics. You focus on the essential and you look at the world around you with clear-sightedness. You are not very talkative and you act with caution. You may come across as cold and ambitious even though your comments are always sincere and practical. However, be careful not to isolate yourself and to appear as a lofty and intolerant person.

It is at work that you can release your mental power full steam ahead, Stéphanie of Monaco. What's the point of racking one's brains if it's not to show one's professional value, to climb the social ladder, to earn one's colleagues' esteem, and to improve oneself every day. You adjust very well to your work environment or at least, this is one of your main concerns.

Your intelligence is rather practical or concrete and you are often interested in health and sometimes in pets, and you are very keen to turn each day into a source of intellectual stimulation.

★★★★★ Mercury trine Mars, orb -0° 3'

This harmonic Mercury-Mars aspect is the signature of a quick wit and an energetic character. You take decisions rapidly and you implement them straight away. You never accept stiff situations. You need to design, to take action, to fight to express your acute sense of relation: the world, the people, everything is of concern to you... You need to be involved in relationships and in dialogues. Your sharp retorts earn you a reputation of straightforwardness. On the relations' area, your quick wit and your mobility are greatly appreciated. You find the allies and partners you need at the right time. An art of resourcefulness that is precious...

★★★★★ Mercury sesqui-quadrate Uranus, orb -1° 34'

You are the champion for useless intellectual speculations, for crazy and revolutionary ideas. This Mercury-Uranus dissonance is the signature for an eccentric character, more ready to ridicule generally accepted ideas than to build up stable patterns. Your sense of humour reveals a critical and forceful mind. You can stand for an idea in the face of all opposition but you do not hesitate to support the opposite thesis the day after... with the same conviction. The coherence of your points of view is harmed by these spectacular reversals that constitute your speciality. In the relationship area, you may also provoke dramatic turns of events if your ideas are conflicted. The good news is that it seems difficult to convince you to accept points of view running counter to your principles. Intransigence also has its virtues.

Your Goals, Motivations, Career, and Destiny

Your Sun is posited in the 6th House

You are a perfectionist, Stéphanie of Monaco. Your constant concern is to improve yourself in every regard, to amass knowledge, to become helpful and to be at the top of your performances and your competencies. Work is an important area and, contrarily to many others, you are comfortable in this field where you can expend a lot of efforts and progress.

You are obsessive about organization and tidiness. Your varied interests - service to others is their common aspect - are less important than the harmonious and quiet ways you display when you carry out your responsibilities.

Being helpful is one of the important motivations that make you feel alive. You can't help it, you are very keen, not only to use your work capacity in a lasting and well-organized way, but also to feel the gratitude of your superiors or of the persons you commit yourself to with loyalty and with the constant concern to demonstrate that you improve yourself.

According to the Tradition, you are naturally interested in health, dietetics and all medicines dealing with well being and fitness. You may work happily in medical fields because they suit your tendency to do favours, to be helpful and to continuously improve your efficiency.

Your strong predisposition to be helpful is in contradiction with the taste for commandment. To become a leader or to accept too many responsibilities is not your cup of tea. You prefer to be the accomplished number 2 and to make yourself indispensable, rather than to take on the burden of authority struggles and to embark upon unsafe territories. For this reason, with this configuration, you may be somehow over-competent for the position you hold, contrarily to the well known Peter's principle stipulating that one reaches one's highest level... of incompetence at the end of one's career. You are a good specialist, a trustworthy person, an irreplaceable aid and that's more than enough for you.

Going further into the description of your deep motivations, in the least favourable cases, you may repress your legitimate ambitions. You are among the persons who need to be encouraged to free themselves from their inhibitions and to not fear the Unknown. You may worry over the fact that you are not up to it or over your health condition: the cure? Charge ahead, go for it, handle your career without fear and beware of ever becoming a hypochondriac...

The ruler of your chart is in the 6th House

The ruler of the Ascendant, also referred to as the chart ruler as explained in a previous chapter, is also posited in one of the twelve Houses of the chart. Just like the Sun in his House, the ruler of the Ascendant provides certain abilities, or it makes you appreciate more keenly certain areas of life.

The ruler of your Ascendant is in the same House as your Sun. This specific feature of your chart strengthens the Sun's characteristics previously delineated.

Aspects influencing your ambitions

Regarding your destiny or your career, the following aspects of your natal chart allow to fine-tune what has just been said above:

★★★★☆ Sun square Midheaven, orb 0° 09'

What you really want to do, or the way you consider everything, may be in contradiction with your professional goals, Stéphanie of Monaco. You may experience conflicts of authority, or a few hesitations over how to manage your career. In any case, you must display flexibility and water down your wine if you want to remain on the right track and achieve professional success. It is the only solution to this discrepancy between the Sun and your Midheaven.

★★★★☆ Moon square Midheaven, orb -0° 12'

There is a dissonance between the Moon and your Midheaven, Stéphanie of Monaco. It may indicate a discrepancy between your sensitivity and the goals you set for yourself in life, although this dissonance seldom plays out dramatically. You may feel that your emotions sometimes catch you off your guard in society, and that the level of your popularity is not too satisfactory, without your knowing the reasons why. In some cases, females may thwart your social ascent.

★★★★☆ Uranus trine Midheaven, orb 1° 11'

Thanks to this soft aspect of Uranus to your Midheaven, Stéphanie of Monaco, you are endowed with the gift to let yourself be carried away by the changes cropping up on your way. Instead of being disheartening, modifications affecting your professional or social environment... stimulate you! Then, you may show opportunism, in the good sense of the word, and throughout your life, you may experience strokes of good luck, the consequences of which can be increased, thanks to your talent and your lack of fear whenever you face newness.

★★★★☆ Jupiter conjunction Midheaven, orb 4° 07'

Jupiter, the most beneficial planet of the Zodiac, is in conjunction with your Midheaven, your destiny, Stéphanie of Monaco. It is undeniably an auspicious configuration which favours your social ascent or your professional destiny, which are often influenced by your respect for the law, and your natural self-confidence. These qualities remove pitfalls out of your way. With this very nice configuration, your profession or your destiny may also be linked to values symbolised by Jupiter: prominent political figure, medical doctor, businesswoman, judge, solicitor, or any respectable occupation.

★★★★☆ Pluto trine Midheaven, orb 2° 59'

Pluto is in soft aspect with your Midheaven, Stéphanie of Monaco. Your natural perspicacity and your propensity to move deeper into the understanding of all the things surrounding you may favour your career. Besides, in some circumstances, secret protections or relationships at work in the dark may very well help you climb up the stairs to success. At the same time, your intuition and your capacity to overcome pitfalls are your constant assets.

★★★☆☆ Sun square Jupiter, orb 4° 17'

This Sun-Jupiter aspect indicates a strong desire for social and professional integration but it may cause a few difficulties of expression in that regard, owing to excesses or immoderation. There may be discrepancies between your objectives and the means implemented to achieve them. The danger of this configuration may be that you forsake an essential part of yourself for some ambitious but out of proportion plan. Too many efforts of adaptation and an excess of opportunism may make you miss the

target. It is important that you remain true to your values and that you do not seek, at any cost, to adjust your attitudes to the situation. However, do not fall into the opposite trap: a need for the absolute that forbids compromises, although they are so necessary. You must reconcile idealism with the demands of the moment, the respect for principles with the sense of timeliness. When this configuration is not well integrated, things get out of hand. Extravagances are glaring. They may translate into an exuberant, overly demonstrative disposition. Personal ambition turns into pride, and joviality becomes immoderation. Outbursts of anger are frequent. However, in a reserved and cautious context, this configuration reveals its positive nature.

★★★★★ Neptune opposite Midheaven, orb -7° 05'

Neptune is in opposition to your Midheaven, and therefore, he is at the same time in conjunction with your Imum Coeli which symbolises your roots, your family, the home where you were born, as well as the home you set up, Stéphanie of Monaco. Thus, this is not a dissonance strictly speaking, but a capacity of fusion with your original environment through emotion and instinct, and which you use amazingly well. There is a counterpart, of course, and with this configuration, you feel deeply comfortable at home, to the extent that you tend to set aside your professional goals, or to postpone them. Nevertheless, your empathy, your abilities to understand your close friends, and your propensity to create osmosis within your private sphere are very much worthwhile! You must not forget that, ineluctably, you must also plunge into the great bath of society and take a chance with people you do not know. Taking action in society is not necessarily in contradiction with feeling comfortable at home. You must totally integrate this truth in order to experience your professional life as successfully as your family life.

★★★★★ Mars sesqui-quadrate Midheaven, orb 0° 07'

Because Mars is in dissonance with your Midheaven, in some circumstances, you may feel misunderstood, Stéphanie of Monaco. In society, you may even feel hostility towards you as you try to climb up the steps of your professional life, or when you strive to reach a higher social status. Your efforts may be resented. You must be twice as careful as you usually are and tone down your behaviour in order not to be rude to other people, even though from your viewpoint, and it is actually most often the case, it only has to do with misunderstandings or some eagerness on your part.

★★★★★ Jupiter quintile Saturn, orb 0° 19'

Jupiter and Saturn are favourably linked to each other in your natal chart. The Tradition indicates that this planetary aspect is a good omen for your social success and good integration in the society. Indeed, Jupiter stands for public life, respect for laws and hierarchy, and acceptance of established rules, whereas Saturn symbolises wisdom, time, seriousness, and perseverance. Therefore, it is only logical that with this Jupiter - Saturn configuration, your career, or your social destiny if you do not work, is well thought of by society, and that you are most likely to experience its happy outcomes sooner or later.

★★★★★ Sun inconjunction Uranus, orb -1° 21'

This Sun-Uranus dissonance indicates a dazzling will to be the centre of attention and to proclaim your specificity, by all means. This aspect belongs to the rebel and the revolutionary restive to all forms of authority and of model. To balance this interpretation, the strong need for autonomy bordering on frenzied individualism must be highlighted. You allow nothing or no one to hinder your chosen line of conduct. Obviously, your attitudes are inflexible. You prefer to continue to the bitter end, even when you are wrong, rather than to be more open to people's ideas. Tyrannical attitudes often turn against the perpetrator... However, this configuration is a powerful agent for creativity, provided your hothead and extremist nature is kept under control.

★★★★★ Sun square Neptune, orb -7° 15'

If this Sun-Neptune dissonance is not well integrated, it may bring about confusions and errors of judgment. It is the signature for Don Quixote in search of chimera, pursuing impossible dreams. Your intuitions may lead to an incorrect estimation of facts. Bohemian life is certainly pleasant. But it is often necessary to remain realistic, lest to be exposed to delusions. Carelessness and letting-go is not suitable. In order to properly integrate this aspect, you must control the possible drift of a wandering and fabulous sensitivity. This aspect favours poetic and romantic inspiration. But you must not let it rule your concrete actions. It is important to allow your intuitive capacities to be fully expressed while keeping a lucid mind, simultaneously.

Your Assets and Your Part of Joviality

Stéphanie of Monaco, your practical abilities to organize and to increase your material security are enhanced with the planet of Greater Fortune in this peaceful and warm sign. Your affectivity is strengthened, and so are your taste for comfort and your needs... Undeniably, the possibilities for affective and material fulfilment are favoured. The other side of the coin may be an exaggerated form of materialism.

This present from the stars is by no means insignificant, Stéphanie of Monaco, the house of career, hosting the planet of Greater Fortune, can but favour your professional life. As time unfolds, it develops into a most pleasant scope. Sooner or later, it brings about success and your peers' recognition. You do not fear responsibilities, and you face them properly.

The planet Jupiter symbolizes expansion, broadness and generosity. Jupiter is associated with the functions of synthesis, enthusiasm and optimism. In your natal chart, his house position is more important than his sign position because, like Saturn, Uranus, Neptune and Pluto, he is a slow planet. Many people born in the same period have Jupiter in the same sign. This is the reason why the sign occupied here is less meaningful than when it is occupied by the so-called fast planets, i.e. the Sun, the Moon, Mercury, Venus and Mars. Therefore, some caution is to be exercised as you read what follows.

Jupiter in Taurus amplifies your practical sense and your capacity to improve your material life. You can experience a long-lasting fulfilment. You are often a bon viveur who likes life's good things. You manage and develop your patrimony with a lot of luck and generosity. Your taste is very good and your loyalty is genuine.

Your Serious Side

The side effects of melancholy or isolation are the capacity to accumulate wisdom and the ability to step back. Therefore, if you really mean it, you have the possibility to make a better distinction between the concrete values that enable you to progress in actual life, and sugary daydreams that only bring some virtual pleasure and no real meaning.

Stéphanie of Monaco, you have a natural reluctance to grant your trust: as a consequence, associations, union, and sharing with others are difficult for you. On the bright side, you are endowed with caution and wisdom.

You ought to tone down this attitude because it may turn against you in the long run. You may marry late or with a person much older than you. This does not imply unhappiness! It is in your interest to open up to others, although it is hard for you to do so. At the end of the day, your harvest benefits your destiny and your evolution alike.

The planet Saturn symbolizes contraction, effort, time, limitation and concentration. Saturn eliminates anything that is not authentic, sooner or later. It is impossible to cheat him as he gives an irresistible desire to form a coherent whole with oneself, in responsible and wise ways. He is the great purifier. He represents our limitations but also our truth. In your natal chart, the house position where Saturn is posited is more important than his sign position because, like Jupiter, Uranus, Neptune and Pluto, he is a slow planet. Many people born in the same period have Saturn in the same sign. This is the reason why the sign occupied here is less meaningful than when it is occupied by the so-called fast planets, i.e. the Sun, the Moon, Mercury, Venus and Mars. Therefore, some caution is to be exercised as you read what follows.

Saturn in Pisces limits your ability to feel other people's emotions or to profusely express your own feelings. For this reason, you are less vulnerable but at the same time, you can revel in isolation. On the other hand, you are genuine, you cannot be satisfied with chimeras and you remain far away from illusions but also... from dreams!

A Few Special Points

Your Uniqueness and Your Utopias

Material topics often take an unexpected turn and may even thrive in sudden and exceptional ways. Conversely, they may also cause serious troubles. This area of your life is filled with ups and downs.

On a more symbolical plane, your attachments to people, as well as your sensual behaviour, are devoid of conventional steadfastness and quietness: you may be possessive or surprisingly detached. You are impossible to categorized and you are definitely special.

Your Inspiration and Your Illusions

Your vision of your childhood home, or of your father, is quite vague, but your emotions in these areas are intense. There is a vital need for you to feel comfortable at home because, otherwise, you tend to imagine horrors that exist only in your mind!

You may encounter complications, lack of understanding, or mystery regarding your origins or your real estate. In any case, it is hard for you to discern when you are "at home" and, even when all is well, you tend to idealize your household.

Your Passion and Your Authority

This configuration may equally indicate an extreme greed for material gains or, on the contrary, a complete lack of interest in them. Your relationship to money may be secretive and obsessive.

You may earn huge amounts of money, with stubbornness and harshness, in a concealed but actual way, or in the darkness of risky speculations; in all cases, your attitude towards your earnings is... passionate, although you do not acknowledge it. The danger is that you may lose a lot. However, it is only when one is prepared to lose that one has a chance to gain a lot, and you certainly know it.

On a more symbolical plane, your sensuality and your possessiveness may be particularly strong. It is advisable that you step back, in order to become able to retain only the best of this configuration.

Your Isolated Planets

In general, the ten planets of the chart are connected to other planets by major or minor astrological aspects. It is owing to those ties that the planets' energies can manifest in the chart owner's personality and play out within safeguards according to a specific tonality.

It seldom happens that in a natal chart, a planet is totally disconnected from the nine other planets.

Astrologers have observed that when such a case occurs, the person feels the energy of the unaspected planet in quite a singular way, very jerky and powerful at the same time. Thus, for instance, the famed astrologer Jean-Baptiste Morin de Villefranche wrote that "an unaspected planet heralds that something strange or extraordinary will take place regarding the meanings of the house in which the said planet is posited" (source : l'astrologie selon Morin).

Rules for detecting an unaspected planet: among all the testimonies that we have reviewed to this day, based on our experience, we tend to agree with American astrologer Janis Huntley who accepts seven aspects, which involve the zodiacal twelve sections of 30 degrees. The aspects to be considered are the conjunction (0 degree, cooperation or tension), the semi-sextile (30 degrees), the sextile and the trine (60 and 120 degrees respectively, aspects of cooperation), the square and the opposition (90 and 180 degrees respectively, tensed aspects), and the quincunx (150 degrees, slightly tensed). In this detection, the chart's angles are not taken into account.

In any case, it is important to remember that an isolated planet clearly expresses its influence when it is a personal planet. Thus, when the Sun, the Moon, Mercury, Venus, or Mars is isolated, it is certain that the effects described by Jean-Baptiste Morin de Villefranche will become manifest. As for Jupiter, Saturn, Uranus, Neptune, and Pluto, one must be cautious because the volume of cases documented is not yet large enough.

Your chart has no isolated planet, and this particular case does not apply to you.

Annex 1: Your Minor Dominants

The five following dominants are less significant than those described at the beginning of your report. They may not be strongly felt. In some cases, they add several minor details to the analysis of your character, but they are rather for curiosity purposes. It is not necessary to take them into account when you first read your portrait.

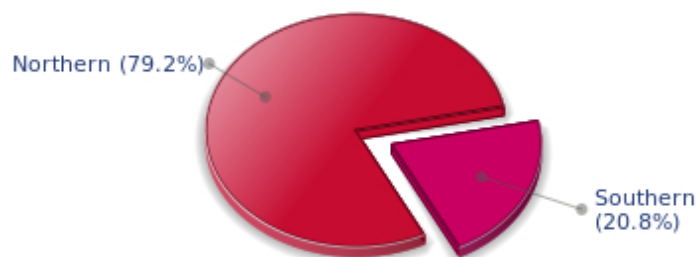
Your Planetary Repartitions: Northern, Southern, Eastern and Western Hemispheres

The axis linking the 1st house's cuspid (the Ascendant) to the 7th house's cuspid - the Descendant - divides the zodiac into two bowls, a superior bowl, in the South, and an inferior bowl in the North. Quoting an expression by the famous American astrologer Rudhyar, the Southern part and the Northern part correspond to two functions: "being" and "doing". Other concepts are also associated with this North and South distribution, such as introversion - Northern hemisphere - and extraversion - Southern hemisphere - being or appearances, inner life or external life, reflection or action, dreaming one's life or living one's dreams, the abstract or the concrete, backstage or limelight.

This is not about determination but about personal inclination: thus, some people will be thrown into public life despite a prominent Northern hemisphere. If this happens, however, it will not be due to their will, their taste or their deep nature. Conversely, a prominent Southern hemisphere will not bring about a famous destiny to its owner, even if he tends to turn the spotlight on himself, or if he looks for a more active life. It is a matter of deep nature and natural inclination. Of course, none of the typologies is "superior" to another.

In your birth chart, St phanie of Monaco, the ten main planets are distributed as follows:

Your Northern and Southern Hemispheres



St phanie of Monaco, the predominance of planets in the Northern hemisphere prompts you to reflect and imagine rather than to exteriorize your actions and to be at the forefront of the stage. So, should you wish to remedy this situation, it is up to you to force your nature to take action in broad daylight, to communicate, and to assert yourself... then, you can move forward in this concrete life and enjoy your newly won situation.

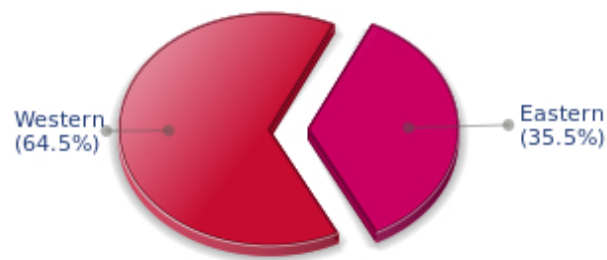
The birth chart is divided into two other parts, Eastern and Western, by the axis linking the Midheaven

to the Imum Coeli.

The Eastern part, on the Ascendant side, shows the person's ego, will, magnetism, and vitality, whereas the Western part, on the Descendant side, symbolizes other people, communication, relationships and their influence, as well as flexibility and adaptability.

Stéphanie of Monaco, here is the planetary repartition in your Eastern and your Western hemispheres:

Your Eastern and Western Hemisphere:



The predominance of planets in the Western hemisphere of your chart means that you are quite flexible, capable of empathy, convivial and communicative. An excellent factor for many professional activities or for your social or sentimental life for example.

A definite asset... provided that you are not at the centre of the decisions you must take in your life: you may be tempted to listen to the last person who spoke, and your flexibility won't always get you out of the tight spot. You are therefore advised to learn to decide alone and to cope with the consequences of your actions with courage and without regrets. This attitude will allow you to combine flexibility and action, adaptability and absence of hesitation.

Your Yin and Yang Polarity

The twelve signs are divided into two polarities, called active or passive, or sometimes masculine and feminine, positive and negative, Yang and Yin. This classification corresponds to two quite distinct tonalities, the first one bringing extraversion, action, self-confidence and dynamism, the second one, introversion, reactivity, reflection and caution. None is superior to the other, each group has its own assets and shortcomings. Odd signs - Aries, Gemini, Leo, Libra, Sagittarius and Aquarius - belong to the first group, whereas even signs - Taurus, Cancer, Virgo, Scorpio, Capricorn and Pisces - belong to the second group.

Your Yin and Yang Polarity



According to the disposition and qualities of your planets and angles, you are rather influenced by Yin energy, the passive polarity, Stéphanie of Monaco: you are quite introverted, imaginative and sometimes discreet, but you are a deep and wise person who is not content with just noisy and flashy things. At times, you doubt but you think that those who don't are a bit... thoughtless. Allow yourself to take more laid-back attitudes and put your reserve aside, because good equilibrium is always healthier.

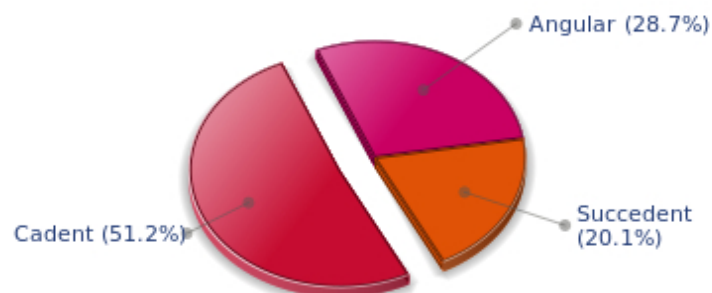
Your Houses' Accentuations

Houses are split up into three groups: angular, succedent and cadent.

The first ones are the most important ones, the most "noticeable" and energetic houses. They are the 1st, 4th, 7th and 10th houses. Their cusps correspond to four famous angles: Ascendant for the 1st house, Imum Coeli for the 4th house, Descendant, opposite the Ascendant, for the 7th house and Midheaven for the 10th house, opposite the Imum Coeli.

Planets are evaluated according to a whole set of criteria that includes comprehensive Western astrology rules. At their turn, planets emphasize specific types of houses, signs, repartitions etc., as previously explained.

Your Houses' Accentuations



Cadent houses, namely the 3rd, 6th, 9th and 12th houses, are very emphasized in your chart, Stéphanie of Monaco. They indicate important potential for communication, adaptability and flexibility. These houses are symbolically linked to the mind and intellect. The relative weakness implied by these characteristics indicates your tendency to hesitate or to be indecisive, but also your remarkable ability to start off again, which is a nice quality, finally: you can easily get yourself out of a tight spot thanks to your mobility and casualness, in the best sense of the term. This group of houses corresponds to evolutionary characteristics of your personality. However, they are only indications and you must include them in the rest of your chart in order to see whether they are validated or not!

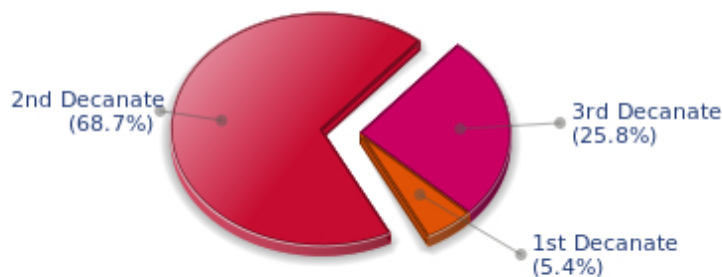
Your Esoteric Decanates

Each sign contains 30 degrees and can be divided into three equal parts: the decanates. The Tradition indicates that specific meanings can be associated to each of the three decanates. Their sphere of activity is usually limited to the Sun sign, however, it is even more interesting to observe the distribution of all the planets in the chart to get an idea of the respective importance of the three decanates, which can complement the description of the personality.

These meanings must be considered with the greatest caution. Indeed, they are minor characteristics that can only underline other outstanding traits of character.

Traditionally, the first decanate highlights the characteristics of the sign where a planet is located. The two other decanates correspond to sub-dominant planets, depending on the nature of each sign. This system leads to a multiplication of meanings and it is impossible to have a clear understanding: here, we prefer to give only the meaning of one decanate in comparison with the other two, within the birth chart as a whole. Again, the greatest caution is needed with regard to this minor indication as it is not always reliable: it is not essential that you read these texts in the beginning. You can get back to them later on, once you have read more important interpretations

Your Esoteric Decanates



The second decanate, which means the part between 10° and 20° of any zodiacal sign, prevails in your natal chart, Stéphanie of Monaco: these 10 zodiacal degrees emphasize logical thought and mental values. Therefore, you may be drawn to some kind of scientific activities, research, writing or any sort of expression where you have to... think a lot.

Annex 2: Karmic Study

The karmic theme is a good complement to the psychological portrait, or natal chart. This analysis is based on the positions of the Lunar Nodes, the Black Moon and the Part of Fortune: they are also called fictitious points and describe the spiritual purpose of your destiny. Because there is in all of us an experience and a quest, our life is an evolutionary journey... provided that we head towards the right direction, of course! Indian astrologers highly prize the Nodes axis (North Node and South Node). It is the Ariadne's thread that we are invited to follow. The Black Moon indicates the sector where we are most likely to transform or to transcend, whereas the Part of Fortune points out the area where we can easily express our specificity.

The Lunar Nodes: a spiritual path

Lunar Nodes have their roots in the Indian tradition and they are based on a simple concept: each of us have a mission of their own, here on earth, a destiny, a course. According to the Indian philosophy, life is a school: the nodal axis describes our past experiences (South Node, our karma, our spiritual inheritance or our previous lives), and our aims on earth (North Node, our Dharma, the purpose of our current incarnation). This is the reason why the study of the lunar nodes is called "Karmic astrology". Here, we shall not step into hypothetical past lives. Wherever our current trends may come from, all that really matters is that we become aware of the purpose of our life, its finality and our dharma. We are likely to understand our life purpose around the age of 37, when the Lunar Nodes return to their natal position.

The Lunar Nodes highlight all types of discoveries and explorations. There is a strong desire for travels, whether actual trips or spiritual, inner ones. Since your childhood, you are particularly interested in unlimited spaces and total freedom. You never trusted smothering attachments and you always allow your thoughts and actions a free hand. The danger is that your life may be unstable because you so badly need to evolve and to discover... Life is an eternal quest of something else, some vital but hidden dimension that is beyond you. Therefore, it is difficult for you to blossom when your family or work environment is routine. However, it is important that you control your wild tendency (the other side of the coin of the wonderful freedom of thought): life requires more sociability. It does not mean that you must accept a conformism that is too far from your inner aspirations. More than other people, you need to develop your relations, your exchanges and your dialogues. In this regard, your destiny is marked by communication.

Very early in life you showed a strong desire to intensely live through your passions. You are sensitive to your personal prestige and you adopted dramatic attitudes as you needed your merits to be acknowledged and you wanted to arouse esteem and admiration. Your individualistic ways may have caused setbacks: you are criticized for your egocentrism or at least, for your lack of openness and compassion. As time goes by, your life's challenge is probably to gain a taste for collaborations, fraternity, and unselfish love. If you can put aside your touchiness, you become able to relinquish your pride and to focus your energy on larger actions such as collective tasks, or even, universal works. Life teaches you a philosophy of harmony and union, far from your primary desires and needs. You then discover an entirely different realm, a spiritual dimension, the major features of which are abnegation, selflessness and the access to a world of altruism that provides more satisfactions than anything else. Self-sacrifice, friendship and fraternity are the path to your fulfilment.

Lilith or the Dark Moon

The Black Moon is the spark of refusal and distance that is dormant in all of us. Depending on the sign where she is found in your chart, she highlights the desire to transform and to sublimate a part of your life. The Black Moon is unfathomable and mysterious. She gives a different dimension to the sector she touches. Her manifestations are subtle; nonetheless, she is powerful, implacable, demanding to the extreme... The Black Moon is also called Lilith. She is the inner flame of your heroism and insubordination.

You have the feeling that you are different from your entourage because you are in charge of both a special mission, and an extraordinary destiny. This configuration may indicate an immoderate pride (when the Black Moon is not well integrated enough). However, when she is well integrated (and she will be, as time goes by), the Black Moon forges an exceptional destiny that implies sacrifices, asceticism and solitude to some extent. The danger is to show too strong an intransigence and to be unable to forgive your entourage's weaknesses as well as your own. But it is also where your strength is found: an innate sense of duty, regardless of the price to be paid for a slow ascension.

One of the main drives of your life is your rejection of mediocrity: the intention is commendable although it is two-edged. You attach so much importance to charisma that you may reject a person whom you deem – wrongly – unworthy of your esteem! If you avoid this trap, the requirements that you demand from yourself as well as from your close friends become an exceptional springboard for evolution.

The Part of Fortune in House

The Part of Fortune is a very ancient fictitious point that depends on the lunar phase at the time of birth. The astrological house tenanted is particularly strengthened. In your chart, the Part of Fortune is in the 1st house: you aspire to be in full control of yourself. Your wealth is within... early in life you develop the taste for individual initiatives and you find your full balance as you give new impulsions to people and things. You are the initiator, the eternal starter. Like all the persons born at the new moon, you have a very personal way of handling life.

Retrograde Planets

The karmic tradition insists on the issues related to the so-called retrograde planets. They are considered to be the inheritance of a past that was not well experienced, a sort of unfinished business. The interpretations of the retrogradation may seem negative or excessive to you. However, you may relate to a scenario that you have often and repeatedly experienced... as if you underwent several setbacks that all have the same cause. Until the day you become aware of it and you can free yourself from it! Through the slow integration of these planetary energies, you will be able to overcome your difficulties and to pay your karmic debt. Actually, each retrograde planet highlights an opportunity for evolution. Nothing can be achieved without the will to grow spiritually and to defeat your own demons.

Mars is retrograding in your chart: according to the Tradition, this suggests karma of aggressiveness. What does it exactly mean? You may not control your energy, at least during the first part of life. In your interactions with the world, you may not dare to give your reactions free rein. During your childhood, as for all bullied persons, your spontaneousness was smothered. You tend to internalize, even to repress your desires. You chew things over and you fuel your resentments without taking any action... until they explode! Then, your aggressiveness suddenly blows up in an excessive and out—of-proportion way. In

itself, martial energy is positive: it allows coping with any given situation. However, the fighting spirit is a virtue only when impulses remain under control. You must endeavour to balance your quarrelsome tendencies and to respond to provocations without losing your self-control. Do you lack audacity? In that case, force your natural self, be more dynamic, otherwise you may undergo the same harmful outbursts again. It is the only way for you to feel better in your body and in the world!

Uranus was retrograding on the day of your birth: you have the soul of a rebel and your behaviour may often be tyrannical or extremist. Your manner has brought you setbacks. You lack the flexibility that spares you the pain of forcing your ways through events. The danger may be that you get trapped into rigid patterns and into personal logics incompatible with others'. This is precisely what your life's lesson is about: as years go by, your judgments are more qualified and your attitudes become less cut-and-dried, less stubborn. You must lose the essentially individualistic character of your childhood and be more open to other people's ideas and problems. In other words, a path of love. Without losing your remarkable resolution, you must practice some form of renunciation and be sensitive to various logics that constitute the wealth of your social life.

Pluto retrograde suggests power issues and mishandled relations: for you, everything comes down to power struggles, submission and domination, Machiavellian manoeuvres, including within your couple... The results are complex behaviours and an obsession for the power to influence people. Yet, life teaches that you must simplify your relations and adopt more transparent attitudes and healthier desires... As years go by, you will tend towards more simplicity and you will slowly discover that human energy can, and must, be at the service of the good, or of well being, in compliance with our individual progression.

N.B: modern astrology attaches less and less importance to the principles of retrograding planets.

Conclusion

A few remarks are needed here in order to allow you to fully take advantage of your astrological portrait: firstly, do not forget that a birth chart is also a photograph of the sky at birth and a structure that not only contains the personality's characteristics, but also its potential evolution.

We all know that, in real life, people begin to know themselves when they are in their forties, or even later. Likewise, several traits of character in a portrait may seem surprising: in most cases, it means that such features are not yet developed.

Some personalities reveal themselves late in life, whereas others are more precocious. It must be remembered that psychological structures are in a state of continuous evolution because they are influenced by unfolding events and gradual maturity. We can never underline strongly enough the "mobile" nature of the personality, throughout a lifetime.

On the other hand, it is difficult to discriminate what is "already present" at this moment in your life when you are reading your chart's interpretation, from what will appear later in the logic of your evolution: you must sort out all the pieces of information provided and, in most cases, you will see that your astrological portrait is helpful for your endeavours to know yourself better.

Finally, several readings of an astrological portrait are usually necessary in order to absorb all its different meanings and to evaluate the relevance of each character trait.

In any case, better self-knowledge obviously contributes to faster personal blossoming, and it is undoubtedly one of astrology's major roles: contributing to know oneself better, in order to improve more rapidly, to deal with one's weaknesses and to avoid its drawbacks, and to take advantage of one's assets as efficiently as possible.
