



**Sharon Tate's  
Astrological Portrait**





## Sharon Tate's Astrological Portrait



<b>Introduction</b>	<b>2</b>
<b>Your Planets, Houses, Aspects, and Natal Chart</b>	<b>4</b>
<b>Preamble</b>	<b>6</b>
<b>Your Planetary Repartitions</b>	<b>7</b>
<b>Your Dominant Modes and Elements</b>	<b>8</b>
<b>Your Dominants: Planets, Signs and Houses</b>	<b>9</b>
<b>Your Style, Behaviour, and Peculiarities</b>	<b>14</b>
<b>Your Sensitivity</b>	<b>18</b>
<b>Your Affectivity</b>	<b>19</b>
<b>The Way You Take Action and Your Sexuality</b>	<b>20</b>
<b>Your Intellect and Your Communication Style</b>	<b>21</b>
<b>Your Goals, Motivations, Career, and Destiny</b>	<b>22</b>
<b>Your Assets and Your Part of Joviality</b>	<b>25</b>
<b>Your Serious Side</b>	<b>25</b>
<b>A Few Special Points</b>	<b>26</b>
<b>Your Isolated Planets</b>	<b>27</b>
<b>Annex 1: Your Minor Dominants</b>	<b>28</b>
<b>Annex 2: Karmic Study</b>	<b>32</b>
<b>Conclusion</b>	<b>36</b>



# Sharon Tate's Astrological Portrait

## Introduction

To fully benefit from this portrait, we suggest that you read its introduction and its preamble carefully, and then that to take the time to soak up the interpretations of each chapter. Given the large number of texts, which mirrors the human being's complexity, you may need to go through the contents several times, so as to get a good grasp of their meaning and to know yourself better. This will reward your patience.

The purpose of this report is to describe your psychological portrait and to highlight the most fundamental features on the personal area. The report begins with the analysis of your planetary dominants and outlines your personality's general traits before going into further detail. Minor dominants are analysed at the end of Annex 1, for purposes of clarity. Your report then delineates the various facets of your personality:

In general, even when relationships are not involved, we express ourselves and we feel according to our character and our personal motivations: this is indicated by the Ascendant and the Sun sign which both give details on the way we function. They shed a tremendously important light which allows to figure out your personality. Here, we describe your Sun sign (your inner self), your Ascendant (your behaviour as seen by others), and the ruler of the Ascendant (interesting additional pieces of information about the style of your personality). These descriptions alone cover nearly a third or a half of your psychological signature, depending on your natal chart characteristics.

Then, we address your sensitivity, or in other words, the way you receive things and how you express your emotions ; it works as a constant filter for all your exchanges, even when it becomes a more secondary element in your amorous relationship, because at that moment, affectivity prevails. Sensitivity is the way you perceive things, it is your radar, your daily mood, and at the same time, it indicates how you react to your entourage, on a daily basis. It is what others immediately see of you. In the second paragraph, we explain in which areas of life your sensitivity and your emotions are strongest, therefore, where you are most vulnerable.

After this, it is your affectivity, the way you love and how you charm, that comes into play as soon as you fall in love: the first part indicates its basic structure or its main form. The second part describes the areas where it is best expressed and how you display it, according to your personality.

A third fundamental area deals with your mode of action and your sexuality: how you behave, how you manage to obtain what you want, what kind of desires you have. There are twelve possibilities, very

different from one another. The study discloses the specific one that applies to you. In the second paragraph, we explain in which life areas you may most efficiently take advantage of your capacity for action and for conquest.

Your ways of communicating and of thinking are obviously among the major elements that must be integrated into the delineation and the description of your personality. Indeed, they influence your general behaviour and may modify or enhance the image your project (for instance, extraversion may “compensate” a weak affectivity, but a huge number of cases are possible). An additional chapter indicates the favourite areas where you enjoy communicating, thinking and meeting with people.

Besides, we analyze an even more personal aspect that is important to define and understand what may occur within your couple: each of us have a centre of interest, a privileged manner to be fulfilled or to achieve our destiny; this main motivation is indicated by the positions of your Sun and your chart ruler in the astrological houses and we provide you with its detailed description.

A natal chart contains the potential for specific fulfilment and a whole range of assets, protections and qualities. How does the lucky factor manifest in your personality? In which area can you best exploit your qualities? The answers are precisely revealed to you in this chapter.

On the other hand, we all feel in us a part of vulnerability, doubts and fears. How does this part of solemnity or serious side play out? How is it possible to handle it in order to evolve and to get rid of useless elements? All this information is provided to you in these two paragraphs.

Then, you can discover three additional traits of your personality that must be considered as secondary ones. They deal with your predispositions, which means that they need to be triggered by external events because they are not influenced by your will; let's call it a part of fate. Please, bear in mind that your destiny can unfold only in accordance with what you are: therefore, even if they belong to your more unconscious self, these characteristics are parts of you, definitely.

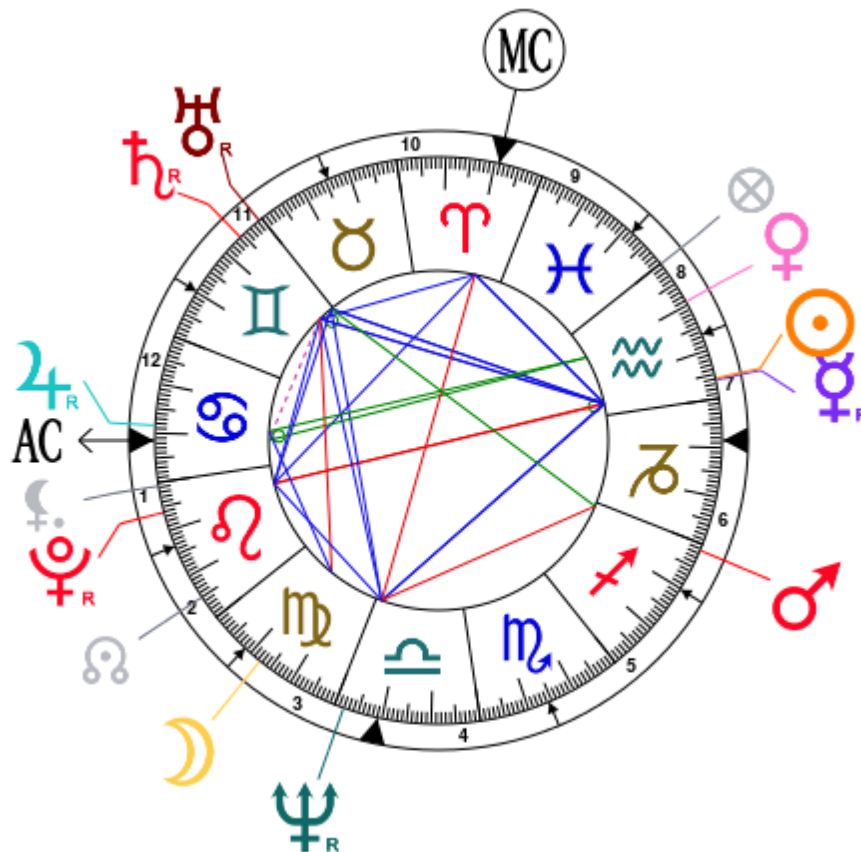
The karmic chart complements the psychological portrait or natal chart. It is based on the positions of the Lunar Nodes, the Black Moon, and the Part of Fortune. These elements of the chart, sometimes referred to as fictitious points, provide information about the spiritual meaning of your destiny. Owing to the fact that we all have in us acquired knowledge and the urge to go on a quest, our life is an evolutionary journey... However, these texts must be read with great caution: this is the reason why you will find this analysis in the Annex 2 of your report.

# Your Planets, Houses, Aspects, and Natal Chart

Sharon Tate, born January 24, 1943, at 05:47 PM, Dallas (Dallas), Texas [96.48W ; 32.47N ; 5W00]

Natal Planets			In House	Natal Houses (Placidus)		
☉ Sun	4°05'	♒ Aquarius	House 7	House 1	21°28'	♋ Cancer
☾ Moon	12°30'	♍ Virgo	House 3	House 2	13°21'	♌ Leo
☿ Mercury	3°45' R	♒ Aquarius	House 7	House 3	8°31'	♍ Virgo
♀ Venus	20°43'	♒ Aquarius	House 8	House 4	9°04'	♎ Libra
♂ Mars	28°40'	♐ Sagittarius	House 6	House 5	14°23'	♏ Scorpio
♃ Jupiter	18°24' R	♋ Cancer	House 12	House 6	19°50'	♐ Sagittarius
♄ Saturn	5°44' R	♊ Gemini	House 11	House 7	21°28'	♑ Capricorn
♅ Uranus	0°40' R	♊ Gemini	House 11	House 8	13°21'	♒ Aquarius
♆ Neptune	1°56' R	♎ Libra	House 3	House 9	8°31'	♓ Pisces
♇ Pluto	6°09' R	♌ Leo	House 1	House 10	9°04'	♈ Aries
♁ Node	24°59'	♌ Leo	House 2	House 11	14°23'	♉ Taurus
♁ Lilith	0°43'	♌ Leo	House 1	House 12	19°50'	♊ Gemini
AS AS	21°28'	♋ Cancer				
MC MC	9°04'	♈ Aries				

In keeping with the common practice, we consider that a planet posited within 1 degree of the next house belongs to that house. We allow an orb of 2 degrees for the ASC and the MC.



## List of Your Active Planetary Aspects

Please find below the list of all the active inter-aspects which are interpreted in this report, in addition to your planets in sign, in house, and all your planetary dominants. Since the aspects between slow-moving planets are of a collective nature, they are not displayed, in compliance with our interpretation rules.

- ★★★★★ Sun conjunction Mercury, orb 0° 2'
- ★★★★★ Sun trine Saturn, orb 1° 38'
- ★★★★★ Sun trine Uranus, orb -3° 25'
- ★★★★★ Sun trine Neptune, orb 2° 09'
- ★★★★★ Sun opposite Pluto, orb -2° 03'
- ★★★★★ Sun sextile Midheaven, orb 4° 58'
- ★★★★★ Moon sextile Jupiter, orb -5° 53'
- ★★★★★ Moon square Saturn, orb 6° 46'
- ★★★★★ Mercury trine Saturn, orb 1° 58'
- ★★★★★ Mercury trine Uranus, orb -3° 05'
- ★★★★★ Mercury trine Neptune, orb 1° 48'
- ★★★★★ Mercury opposite Pluto, orb -2° 24'
- ★★★★★ Mercury sextile Midheaven, orb 5° 19'
- ★★★★★ Venus inconjunction Jupiter, orb -2° 19'
- ★★★★★ Venus inconjunction Ascendant, orb 0° 45'
- ★★★★★ Mars inconjunction Uranus, orb 2'
- ★★★★★ Mars square Neptune, orb -3° 16'
- ★★★★★ Jupiter conjunction Ascendant, orb 3° 04'
- ★★★★★ Saturn semi-square Ascendant, orb 0° 44'
- ★★★★★ Saturn sextile Midheaven, orb -3° 2'
- ★★★★★ Neptune opposite Midheaven, orb -7° 07'
- ★★★★★ Pluto trine Midheaven, orb -2° 55'

## Meaning of Stars

Stars indicate the strength of the aspects. Two solid coloured stars (there are half-stars also), mean that the aspect is powerful enough to be noticed at the first reading.

We strongly advise that you read the paragraphs displaying less than two stars later on, after you have absorbed the full import of the other texts.

The yellow colour indicates a soothing and conciliating aspect, and the red colour, a dynamic and tense aspect. The red aspects enable you to evolve, to take action, and to learn to turn your "weaknesses" into assets through your life experiences. The yellow aspects are innate strengths on which you rely in order to grow better with the former...

## Preamble

When interpreting a natal chart, the best method is to start gradually from general features to specific ones. Thus, there is usually a plan to be followed, from the overall analysis of the chart and its structure, to the description of its different character traits.

In the first part, an overall analysis of the chart enables us to figure out the personality's main features and to emphasize several points that are confirmed or not in the detailed analysis: in any case, those general traits are taken into account. Human personality is an infinitely intricate entity and describing it is a complex task. Claiming to rapidly summarize it is illusory, although it does not mean that it is an impossible challenge. It is essential to read a natal chart several times in order to absorb all its different meanings and to grasp all this complexity. But the exercise is worthwhile.

In brief, a natal chart is composed of ten planets: two luminaries, the Sun and the Moon, three fast-moving or individual planets, Mercury, Venus and Mars, two slow-moving planets, Jupiter and Saturn, and three very slow-moving planets, Uranus, Neptune and Pluto. Additional secondary elements are: the Lunar Nodes, the Dark Moon or Lilith, Chiron and other minor objects. They are all posited on the Zodiac wheel consisting of twelve signs, from Aries to Pisces, and divided into twelve astrological houses.

The first step is to evaluate the importance of each planet. This is what we call identifying the dominant planets. This process obeys rules that depend on the astrologer's sensitivity and experience but it also has precise and steady bases: thus, we can take into account the parameters of a planet's activity (the number of active aspects a planet forms, the importance of each aspect according to its nature and its exactness), angularity parameters; (proximity to the four angles, Ascendant, Midheaven, Descendant and Imum Coeli or Nadir, all of them being evaluated numerically, according to the kind of angle and the planet-angle distance) and quality parameters (rulership, exaltation, exile and fall). Finally, other criteria such as the rulership of the Ascendant and the Midheaven etc. are important.

These different criteria allow a planet to be highlighted and lead to useful conclusions when interpreting the chart.

The overall chart analysis begins with the observation of three sorts of planetary distributions in the chart: Eastern or Western hemisphere, Northern or Southern hemisphere, and quadrants (North-eastern, North-western, South-eastern and South-western). These three distributions give a general tone in terms of introversion and extraversion, willpower, sociability, and behavioural predispositions.

Then, there are three additional distributions: elements (called triplicity since there are three groups of signs for each one) - Fire, Air, Earth and Water - corresponding to a character typology, modality (or quadruplicity with four groups of signs for each one) - Cardinal, Fixed and Mutable - and polarity (Yin and Yang).

There are three types of dominants: dominant planets, dominant signs and dominant houses. The novice thinks astrology means only "to be Aries" or sometimes, for example, "to be Aries Ascendant Virgo". It is actually far more complex. Although the Sun and the Ascendant alone may reveal a large part of the character - approximately a third or a half of your psychological signature, a person is neither "just the Sun" (called the sign) nor just "the first house" (the Ascendant). Thus, a particular planet's influence

may be significantly increased; a particular sign or house may contain a group of planets that will bring nuances and sometimes weaken the role of the Ascendant, of the Sun sign etc.

Lastly, there are two other criteria: accentuations (angular, succedent and cadent) which are a classification of astrological houses and types of decanates that are occupied (each sign is divided into three decanates of ten degrees each). They provide some additional informations.

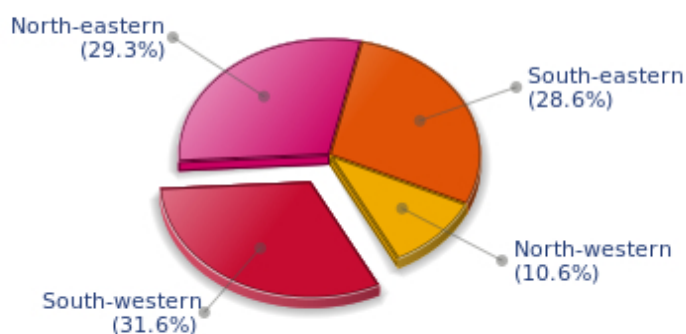
These general character traits must not be taken literally; they are, somehow, preparing for the chart reading. They allow to understand the second part of the analysis, which is more detailed and precise. It focuses on every area of the personality and provides a synthesis of all the above-mentioned parameters according to sound hierarchical rules.

As explained in the introduction of your Psychological Portrait report, minor dominants are analysed at the end of Annex 1, for purposes of clarity.

## Your Planetary Repartitions

Each quadrant is a combination of the four hemispheres of your birth chart and relates to a character typology. The Southern hemisphere – the top of your chart, around the Midheaven – is associated with extraversion, action, and public life, whereas the Northern hemisphere prompts to introversion, reflexion, and private life. The Eastern hemisphere – the left part, around the Ascendant – is linked to your ego and your willpower, whereas the Western hemisphere indicates how other people influence you, and how flexible you are when you make a decision.

### Your Four Quadrants



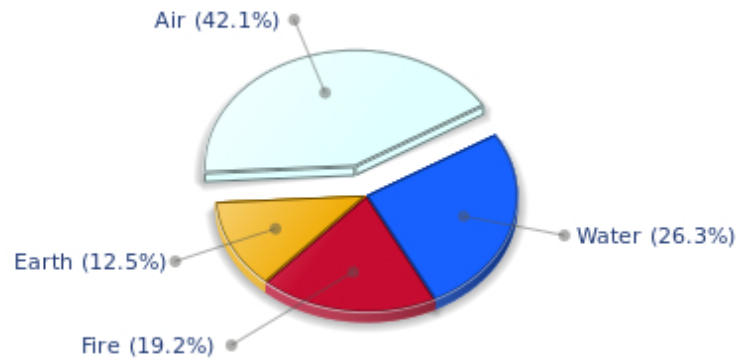
Sharon Tate, the diurnal South-western quadrant, consisting of the 7th, 8th and 9th houses, prevails in your chart: this sector brings about a thirst for communication and sometimes, a need to take risks in your dealings with others. Relations are a factor of your evolution and your transformation, which you accept serenely. Indeed, what matters to you is the movement and the energy that link you to others and that make you gain more awareness. A kind of rebellion or a desire to get away from it all is rooted in you.



## Your Dominant Modes and Elements

Sharon Tate, here are the graphs of your Elements and Modes, based on planets' position and angles in the twelve signs:

### Your Four Elements

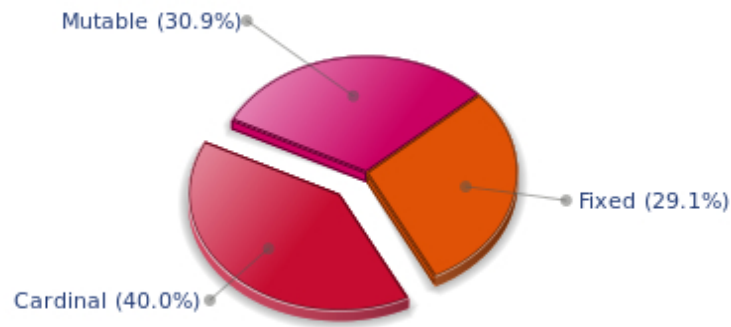


Cheers for communication and mobility, Sharon Tate! The predominance of Air signs in your chart favours and amplifies your taste for relations and for all kinds of short trips, whether real (travels) or symbolic (new ideas, mind speculations). You gain in flexibility and adaptability what you lose in self-assertion or in pragmatism.

The predominance of Water signs indicates high sensitivity and elevation through feelings, Sharon Tate. Your heart and your emotions are your driving forces, and you can't do anything on Earth if you don't feel a strong affective charge (as a matter of fact, the word "feeling" is essential in your psychology). You need to love in order to understand, and to feel in order to take action, to the detriment of a certain vulnerability against which you should learn to fight.

The twelve zodiacal signs are split up into three groups or modes, called quadruplicities, a learned word meaning only that these three groups include four signs. The Cardinal, Fixed and Mutable modes are more or less represented in your natal chart, depending on planets' positions and importance, and on angles in the twelve signs.

## Your Modes



Sharon Tate, the Cardinal mode is dominant here and indicates a predisposition to action, and more exactly, to impulsion and to undertake: you are very keen to implement the plans you have in mind, to get things going and to create them. This is the most important aspect that inspires enthusiasm and adrenalin in you, without which you can grow weary rapidly. You are individualistic (maybe too much?) and assertive. You let others strengthen and improve the constructions which you built with fervour.

## Your Dominants: Planets, Signs and Houses

The issue of dominant planets has existed since the mists of time in astrology: how nice it would be if a person could be described with a few words and one or several planets that would represent their character, without having to analyse such elements as rulerships, angularities, houses, etc!

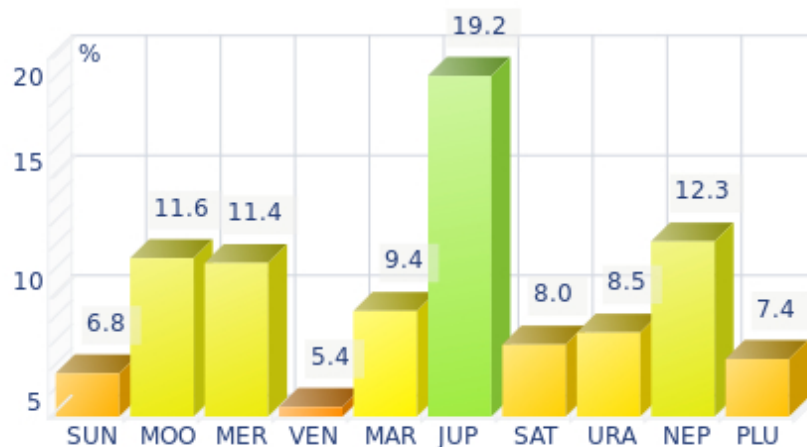
The ten planets - the Sun throughout Pluto - are a bit like ten characters in a role-play, each one has its own personality, its own way of acting, its own strengths and weaknesses. They actually represent a classification into ten distinct personalities, and astrologers have always tried to associate one or several dominant planets to a natal chart as well as dominant signs and houses.

Indeed, it is quite the same situation with signs and houses. If planets symbolize characters, signs represent hues - the mental, emotional and physical structures of an individual. The sign in which a planet is posited is like a character whose features are modified according to the place where he lives. In a chart, there are usually one, two or three highlighted signs that allow to rapidly describe its owner.

Regarding astrological houses, the principle is even simpler: the twelve houses correspond to twelve fields of life, and planets tenanted any given house increase that house's importance and highlight all relevant life departments: it may be marriage, work, friendship etc.

Sharon Tate, here is the evaluation diagramme for your planets:

## Your Dominant Planets



The three planets that are most highlighted in your chart are Jupiter, Neptune and the Moon.

Jupiter, the planet of expansion, organization, power and benevolence, is quite emphasized in your chart. Like any Jupiterian, you are warm, open, sociable, consensual, active and optimistic. You can use your self-confidence to erase differences of opinion, and you leave the task of analyzing and perfecting things to specialists. Your role, and you know it since you were young, is to gather, to demonstrate your synthesizing and conciliatory mind, and to naturally reap its fruits - power.

You appreciate legality, social order but also order in general. With you as a leader, every plan or human entity can be organized and structured. You excel at supervising. The Jupiterian type is indeed the politician par excellence, and a positive Jupiter in your chart is synonymous with good integration into society, whatever the chosen path.

Is this idyllic picture really perfect? Certainly not: each planet's typology has its own weaknesses. One of yours is pride, like the Solarian, but your will of expansion at all costs may generate a form of exaggeration in everything, endless pleasure, inappropriate self-confidence that could lead you to rough materialism and the thirst for absurd material comfort - in the worst cases, of course.

With Neptune as one of your three dominant planets, you are a secretive and ambiguous person, often confused or unclear about your own motivations! Indeed, you are endowed with unlimited imagination and inspiration, as well as with an extreme sensibility that may turn you into a psychic or a clairvoyant. On the other hand, your impressionability is such that you may have difficulties in separating what is concrete and solid from illusions or dreams.

A mystic, a visionary or a poetess, you daydream, like any Neptunian, and you see what few people only can see, all of this being shrouded in aesthetic mists when you are fired with enthusiasm.

A boundless, infinity-loving woman like you is inevitably likely to be more vulnerable and easily hurt because of your acute perception of events. In such cases, you are hit full in the face, and you may sink into gloomy daydreamings and dark melancholy.

That said, this mysterious aura definitely gives you an indefinable charm in the eyes of your close friends

who are often fascinated by your unique ability to feel and to see what ordinary people can never see!

The Moon is one of the most important planets in your chart and endows you with a receptive, emotive, and imaginative nature. You have an innate ability to instinctively absorb atmospheres and impressions that nurture you, and as a result, you are often dreaming your life away rather than actually living it.

One of the consequences of your spontaneity may turn into popularity, or even fame: the crowd is a living and complex entity, and it always appreciates truth and sincerity rather than calculation and total self-control.

As a Lunar character, you find it difficult to control yourself, you have to deal with your moods, and you must be careful not to stay passive in front of events: nothing is handed on a plate, and although your sensitivity is rich, even richer than most people's, you must make a move and spare some of your energy for... action!

### Your Dominant Signs



In your natal chart, the three most important signs, delineated according to the above-mentioned criteria, are, in decreasing order of strength, Cancer, Aquarius and Virgo. They are often prominent because your Ascendant and your Sun are posited there. However, it is not always the case: it may be because they are occupied by a cluster of planets, by a planet near an angle other than the Midheaven and the Ascendant, or because two or three planets are very active and form numerous aspects from these signs. Therefore, you partly take on the three signs' characteristics, which are somehow superimposed on your natal chart, and all the more so if any of the signs in question is highlighted.

Cancer is one of your dominant signs and endows you with imagination and exceptionally shrewd sensitivity. Although suspicious at first sight - and even at second...- as soon as you get familiar with people and let them win your confidence, your golden heart eventually shows up, despite your discretion and your desire for security that makes you return into your shell at the slightest alert! Actually, you are a poetess and if you are sometimes blamed for your nostalgia and your laziness, it is because your intense inner life is at full throttle...

Aquarius is one of the most important signs in your natal chart: it endows your personality - at least one of its facets - with originality, to the point of eccentricity in spite of a sometimes distant and humane side. Likeable and impassive at the same time, you are a paradoxical woman, very hard to define because

the two planets Uranus and Saturn blend their qualities to create the so complicated and endearing sign that inspires your character. Saturn's seriousness and impassivity is added to Uranus' rebellion, talent, individualism, charisma, extravagance, and unpredictability! One of your main characteristics is that you never open up on a personal basis, but you tend to do so easily in public. You are actually quite strange. Sexy and charming in public, despite your nice and sociable character, you could frustrate many of your admirers in private because of your impossibility to show deep and warm affection, emotions, tears... But appearance and reality are two different things anyway - you are a kind of a genius, or you have at least a tremendous charm with this sign. You have many friends and an active social life. If you are detached in your love life - only in this aspect, since the rest of chart will confirm it or not - this is no big deal!

Virgo, associated with perfectionism, numbers and reason, is among your dominant signs: you inherit its sense of responsibility and tidiness, a clear mind, an unflinching logic, as well as a need to be useful and to fulfil your task to the best of your abilities. Obviously, people may think that you are too modest or reserved, suspicious or pessimistic because of your exceedingly critical mind, but aren't logic and wisdom great qualities? Of course, they are. Moreover, you keep your feet on the ground, you never behave irrationally and you are helpful and hardworking - what more can you ask for?!

### Your Dominant Houses



Houses 3, 7 and 12 are the most tenanted ones in your natal chart. To compute their strength, planets and angles are weighed according to various astrological criteria such as swiftness, activity, angularity, rulership etc. From the analysis of the most tenanted Houses, the Astrologer deduces the fields of activity that are most relevant to you, be it because of what you are experiencing, or what you may experience in the future, or because of your deep inner motivations.

As the 3rd house is one of the most important houses in your chart, communication plays a major role in your life or in your deep motivations: frequent short trips, open-mindedness - which may offset a lack of mutable signs for instance - listening, discussion, interest in learning, knowledge accumulation or long-term studies, etc., are all areas that greatly appeal to you and are part of your daily life.

Your 7th house is one of your dominant houses: it symbolizes other people, marriages, associations, contracts, and partnerships. Your personal achievement and maybe your problems - depending on the rest of your chart - are strongly influenced by your rapports with others, the area in which you tend to commit yourself deeply. You appreciate communication, and you give importance to others' opinions. Success requires the support of others, which seems obvious and natural to you. Your marriage generally

contributes to your fulfilment.

The 12th house is emphasized in your chart: like the 8th house, it has a rich and complex meaning. Although its bad reputation is likely to scare most readers in the first place - it is indeed the house of hidden or isolated places, of solitude, of ordeals or enemies - it can also mean that a part of your life is very deep and intense. If your achievements are not visible in the public eye, you may fulfil yourself in a different but equally important way: you may be involved in secret activities, humanitarian causes, and projects in favour of disadvantaged people. You are likely to work in quiet and remote places. In many cases, you will gain from these hidden activities as many treasures as people who have a more public destiny. It may be because you sublimate your work, or only because you successfully carry out your task within your environment. There is no such things as a good or a bad house, because each area of life is necessary in its own way, and we need all of them, if we are to improve spiritually.

## Your Style, Behaviour, and Peculiarities

What is commonly known as "sign" indicates the position of the Sun in the Zodiac. The Sun highlights all the characteristics of the sign he tenants. According to astrology traditional rules, these characteristics are all the more pure and exact when the Sun is strong in the sign, or when the sign is particularly highlighted within the chart. Here, we indicate the pure characteristics of the sign but you must bear in mind that they may only shed a light on a particular aspect of your personality. Indeed, the sole sign of the Sun, or of the Ascendant, can never describe an astrological chart because it depends on the degree of strength of the said sign in your chart.

Another important point must be underlined. Contrary to the Ascendant, which clearly describes your appearance, your vitality, your physical constitution, your spontaneous behaviour and the image you project, your Sun sign describes your inner self, which you may not completely be aware of, and which may emerge gradually as you mature: it is about your inner personality that you reveal only to the members of your entourage whom you trust. The Sun sign is likely to be the final form of your personality, once it has evolved in line with the energies of the other parts of your chart, the beginning of which is seen in the Ascendant, your external "bark".

The Ascendant is one of the major components of your natal chart. It is the zodiacal sign that rises in the East at the very moment of your birth. To calculate it, it is therefore necessary to know your exact time of birth.

It provides with a wealth of information on your personality. It is one of the key features that allows the analysis of several parts of you, such as your appearance, your character as it is initially perceived and your immediate behaviour. It describes the external aspect of your personality which you always display, but it also describes your physical constitution in the long-term, in other words, your health.

Please be aware that, in spite of the importance of the Ascendant, the accuracy of its description depends on how strongly highlighted it is in your natal chart. We use the entire set of astrological rules to assess the strength of the Ascendant. In most cases, the Ascendant is as revealing as your "sign", i.e., the sign where the Sun is posited at the time of birth.

## You were born under the sign of Aquarius and your Ascendant is in Cancer

Before broaching the details of the meaning of your Sun and your Ascendant, as a preamble, we offer a brief generic interpretation of their combination in your chart:

With this duet of very different signs merging in you, you have everything required to puzzle the members of your entourage and... yourself! Your problem is to blend your thirst for newness and active participation in collective actions with your need to protect your privacy and to cultivate an imaginary world or your secret fiefdom. Indeed, you are often torn between these two contradictory tendencies which come from your Aquarius Sun and your Cancer Ascendant. When you are in unknown settings, your first reaction is to behave cautiously, as if you instinctively fear that unveiling your true self may endanger your inner balance. You dread showing your vulnerability and your emotionalism, and for this reason, you harden your shell. Your Aquarius Sun is willing to remain free in every regard, including towards its personal attachments, so as to be available for as many people as possible and to imprint its

mark on the big collective whole. Although you are impersonal and disinterested, you feel that you must protect your interests as well as those of your friends and relatives. In order to reconcile your quite contradictory tendencies, bear in mind that both signs share the same vivid imagination and sharp intuition, with the nuance that for Aquarius, they are more focused on the future and the society, and for Cancer, they are more laden with nostalgia and lyricism.

### **You were born with the Sun in Aquarius**

In the sentimental sphere, you are particularly sensitive to the values of friendship, in the sense that you see yourself as a link within a chain, certainly a different and original one, but with no will to flatter your ego or to individually assert yourself. On the contrary, your aim is to immerge yourself in your friendly relations and to participate in projects and ideals of the whole human community.

As you are born under this sign, you are idealistic, altruistic, detached, independent, original, surprising, gifted, contradictory, innovative, humanistic, likeable, friendly, self-confident, impassive, quiet, intuitive, creative, charitable, elusive, disconcerting, generous, tolerant, paradoxical, and you cannot stand any kind of constraint. But you may also be marginal, resigned, distant, utopian, maladjusted, eccentric and cold.

In love, Madam, you are the inquiring sign of the Zodiac. You are cerebral and lively, always on the look-out for novelty or for anything amazing.

You are often more in love with love than you are in love with your partner. You are surprising and unpredictable, now passionate and using your imaginative and mental powers to idealize your relationship and your partner, now cold, suddenly detached and impersonal because you are annoyed by subtle elements that you, and only you, can understand.

You do not stand disappointment and you display great cleverness when you want to suddenly break up when your partner least expects you to do so.

In order to be able to charm you, one must be exceptional, amazing, disconcerting and one must accept to grant you total freedom and independence. Under those conditions only, will you be able to have a long-lasting, stable yet eventful, surprising and harmonious relationship with your chosen partner. Once trust and confidence settle in, you will be fulfilled and you will be hardly recognizable.

The life span of your couple depends mainly on your common tastes: ideally, you should live with a man who actually is your friend and your lover, continuously shifting from one role to the other according to circumstances, and who, at the same time, provides you with a much needed mental stimulation, as well as with warm love.



## **Your Ascendant is in Cancer**

Psychologically speaking, your nature is dreamy, oriented towards nostalgia for things past. You are very instinctive and you protect yourself against the outside world. Your inner life is rich, with fertile and even unlimited imagination, a propensity to avoid unnecessary risks and to pursue security. You show your true face only to persons you can trust, when there is a kind of well being triggered by the nostalgia for the past.

As you are born under this sign, you are emotional, sentimental, restful, imaginative, sensitive, loyal, enduring, protective, vulnerable, generous, romantic, tender, poetic, maternal, dreamy, indolent, greedy and dedicated. You may also be fearful, unrealistic, evasive, passive, touchy, anxious, dependent, stubborn, lunatic, backward-looking, lazy, burdensome, impenetrable and a homebody.

In love, Madam, you are so romantic and dreamy, that you are in love practically all the time, even though it never shows... because you are so subtle and interiorized that everything is actually occurring in your head, most of the time.

You need to be in confidence, you need time and certainties, otherwise your powerful feelings and the marvellous stories you invented will have little chance to translate into concrete reality. But when they do, nothing will stop you and you will live through the destiny that your intuition identified.

Your nature is deeply maternal, charming, amusing too, when you feel in harmony with yourself. You will really blossom when you have your own home and when you dedicate yourself to your children's happiness; as you do so, try not to forget your husband... It is certain that you will then be the most gifted woman for the creation of a cosy and protective cocoon and of a family network that will allow you to actively give free rein to your rich and deep qualities.

You need a strong and stable partner whom you can rely on.

## **The ruler of your chart is in Virgo**

The ruler of the Ascendant, also referred to as the chart ruler, brings a few interesting nuances to the meanings provided by the Sun and the Ascendant. The sign in which the ruler of the Ascendant is posited fine-tunes the style of personality described by the Sun and the Ascendant. It may strengthen it if the sign is identical to either of them.

The ruler of the Ascendant, Sharon Tate, is the Moon. In the sign of Virgo, it turns you into a cautious and rational person, sometimes to the detriment of your feelings. You like to improve yourself, and you pay a great deal of attention to details. You respect the rules, and you appreciate well-done work. However, you may lack self-confidence or you may hesitate, perhaps because you hate to make mistakes, since you believe that truth is a major quality.

## Aspects to your Ascendant

Several planets form an aspect with your Ascendant, Sharon Tate. Therefore, in their specific way, they modify your behaviour and your personality, which do not take on the pure characteristics of your Cancer Ascendant only, but which are a blend of its characteristics with those of the said aspects.

### ★★★★★ Jupiter conjunction Ascendant, orb 3° 04'

Jupiter, the planet of good luck, law, and benevolence, is in conjunction with your Ascendant, Sharon Tate. This endows you with an undeniable natural vitality, a composed, honest, affable, not to say pleasant side. You tend to see the good aspects of things and to honour your commitments. This is what causes other people to often notice your reassuring and nice behaviour: quite an asset in life!

### ★★★★★ Venus inconjunction Ascendant, orb 0° 45'

In certain circumstances, Sharon Tate, you tend to adopt an attitude that is not necessarily in line with your real emotions. This discrepancy between your behaviour and your feelings, caused by Venus, may disconcert the people you mix with. Have self-confidence, don't be too pushy or... withdrawn, and forget your fears. Then, people can have a better perception of your personality, and you can harvest the fruits of your efforts.

### ★★★★★ Saturn semi-square Ascendant, orb 0° 44'

This hard aspect between Saturn and your Ascendant may bring about a lack of self-confidence and some inhibitions in your behaviour, in people's eyes, Sharon Tate. Therefore, you must have trust in yourself and you must not be taken away into the spiral of doubts with its usual consequences, which are to hide away, or on the contrary and as a compensation, to overdo. Please, keep in mind that all this is highly subjective, and that in most cases, if you fully understand it, you can gradually overcome this slight restraint, and even turn it into strength. This is how you can keep your self-esteem and transform your prudence into... an asset.

## Your Sensitivity

Your sensitivity is dominated by your reason, Sharon Tate, and you tend to analyze your emotional reactions in the slightest details, as if you wanted you hold them at bay so that they cannot overwhelm you or weaken you. Your nature is anxious, shy, you do not like to be in the forefront and you lack self-confidence. You are extremely perfectionist, you need to examine, to organize and to plan everything according to your logic. You like to help and to feel that you are useful, in your own work or through your wise and clever advice. You may also be very demanding and critical, even unbearable, because you are insistent and you find fault in everything. Learn to gain some self-confidence and do not constantly be ready to criticize...

Lively, even restless sometimes, Sharon Tate, your thoughts are roaming, prolific, fluctuating: you are interested in many things and your “Jack of all trades” side is part of your charm, even if you have difficulties in concentrating and completing what you start.

Your emotions are particularly active during your contacts and your frequent travels. You almost chat too much sometimes, mixing practical and affective matters, often changing your mind. However, you are very intuitive when it comes to instantly grasp the personality of the person you are dealing with. If you are a journalist or a writer, you probably have chosen the best direction for you! Relations with females are usually favoured, or at least, they are numerous and intense.

### ★★★★★ Moon square Saturn, orb 6° 46'

When this aspect is not well integrated, there is no feeling of integration and security. You feel that you are not understood or even, that you are rejected. It is difficult for you to find inner peace and tranquillity. You lack the quietness and the primordial confidence that would allow you to lay back and to be carried away and pampered by life. This configuration indicates questionings and doubts regarding the unconditional affection that each individual longs for. You do not trust the world. You tend to dismiss social models, as well as your close friends' attachment and tenderness, probably because you need to test them and to get the feeling of being loved that you naturally lack. It would be a mistake not to see that you desperately need affection. You are particularly vulnerable to relationship flaws and you strive to find the gestures of love that would allow you to let go and to be nurtured by life. In such a context, the sincerity you display, as you give or refuse your trust, is highly commendable.

### ★★★★★ Moon sextile Jupiter, orb -5° 53'

Why should one complicate one's life if it is possible to enjoy the simple joys of the present? This harmonic Moon-Jupiter aspect indicates a cheerful nature, which earns your entourage's liking and protects the balance of your intimate life. Your sociability is supported by your desire to smoothly adhere to a group, a social or family cell. You are fond of moments where you unwind and relax. You value your daily comfort and, to preserve it, you accept to play by the rules of privacy. When this aspect dictates your attitudes, you behave like a person easy to get along with... even though your personal demands, relegated to the backseat, come up again at top speed and force you to behave more in line with your inner needs.

## Your Affectivity

In your chart, the Sun and Venus are both in Aquarius. The nature of your affectivity is most unusual and off the beaten path. You are an idealist to your fingertips and you dream of a sentimental life that is renewed each day with excitement and amazement... It may be necessary that you restrain your heart impulses and that you get back to a cold and inflexible reality. Under any circumstance, you find reasons to hope for a blissful future, to magnify and to idealize your relationship. Being in love with you is not exactly restful, since you need to esteem and to admire your partner. You display an unlimited generosity but you may also be intransigent when you start losing your illusions. Your affectivity is demanding and cannot be satisfied with approximations. Your strength lies in your ability to be moved and amazed by your partner. You do not see his flaws, you do not listen to the criticisms he may be the target of and you allow yourself to be intoxicated by your passion. Later on, the idyll transforms into friendship and the amorous relationship, into fraternity. But the magic of the first moments never fades away, because love is yet to come.

In love, you are more cerebral and friendly than really passionate, Sharon Tate. You are made for amorous friendships, for refined and light feelings where each partner retains one's freedom, and almost detachment, without getting really committed. Sometimes, you may be distant from, and indifferent to, love matters for a while, because you can be completely engrossed in original intellectual pursuits and the collective atmosphere which you are so fond of. You substitute a great number of friendly and light contacts to amorous relationships and it is fair to say that they satisfy you. To fall in love, you need spice and a partner who is original, who amazes you and whom you admire; under such conditions, you can freely express your feelings in an ambiance devoid of constraint, where freedom is perfectly respected and shared within the couple.

When you fall in love, Sharon Tate, your feelings immediately reach a considerable level of intensity and quickly take you into the realm of passion. You are not a mild person when it comes to love, either you love deeply, or not at all. According to the Tradition, this configuration strongly associates feelings and sexuality. In your approach to love, feelings are intimately linked to desire and love physical aspects. It does not take you long before you deliberately infuse a fair amount of torrid eroticism into your behaviour, so as to make your idyll as burning and deep as your inner feelings are! If no adverse aspect affects Venus in the 8th house, you become possessive in the positive sense of the term: you happily care for your significant other, including for his financial interests. Venus in the 8th house protects everything that deals with investment, management of other people's possessions and particularly, those of the husband. Your benevolent attitude, which you also express outside your couple's relationship, usually causes pleasant surprises in the guise of unexpected inheritances. When there are tense aspects of square or opposition to your Venus, you may fall into the trap of obsessive and dangerous jealousy. And it would be a disgrace since, as the saying goes, jealousy is uncalled-for and very harmful when it is unjustified, and it is useless and too late when harm has been done...

### ★★★★★ Venus inconjunction Jupiter, orb -2° 19'

This Venus-Jupiter dissonance indicates a strong will to seduce. However, there may be discrepancies between your words and your actions, as well as between your behaviour and your instinctive reactions. You may be carried away by a maelstrom of emotions, feelings and pleasures and you do not consider the possible consequences of your superficial attitude. Therefore, the apparent state of grace may turn into delusion. Proprieties and necessities of the moment forbid you to experience your desires. What you deem reasonable does not suit your heart's impulses. What a dilemma... Hopefully, as time goes by, you may reconcile your desires, your life patterns and the reasons of your heart with those of your mind.

## The Way You Take Action and Your Sexuality

Sharon Tate, you are a real Goliath and you often excel in sport; your thirst for conquests prompts you to constantly launch new challenges. The enthusiasm you put in your undertakings is perfectly well supported by your moral concepts and an idealism compatible with the values of the society you live in. You are pragmatic, enterprising and sometimes, naive. You do not pay attention to details and you launch various great adventurous projects that are all doomed to success. In a few rare cases, you can funnel your huge energy into more philosophical, even spiritual or religious enterprises, where your entire fieriness works wonders. On the sexual plane, your ardour and your spontaneity are your main assets. The danger is that you may spread yourself too thin in the sense that you may forget about faithfulness, particularly during the extensive faraway travels you are so fond of.

It is in the area of your work environment that you are most active and pugnacious, Sharon Tate. Or in your daily life, if you do not work.

You are a hard-worker, completely dedicated to the service of others: being helpful and efficient is your battle horse. Indeed, it is so obvious! Ask the opinion of your colleagues or your entourage... Your efficiency is not to be proved. You get things moving, you progress, you are very keen to improve yourself, and your boss can only rejoice that his staff contributes so actively.

The areas of health and pets are traditionally favoured by this planetary configuration. However, do check your Mars' aspects if you intend to be a tamer!

In any case, the daily work sphere is the area where you can deliver to the best of your abilities, in terms of action. The only reservation may be not to overdo.

### ★★★★★ Mars square Neptune, orb -3° 16'

You behave like a bohemian person and you are led by an ideal that you may not control. Your passions are undoubtedly sincere. However, you may target wrong objectives. You engage on hopeless struggles and meaningless confrontations. It is important that you watch out for fanaticisms from all sides and that you remain clear-sighted in the face of your exalted feelings. Your sincerity may work wonders when you champion lost causes. The most difficult thing is probably to keep your exacerbated sensitivity under control. Because you are deeply moved by facts, because you are sensitive to injustices and to the world's woes more than the average people, you embark on incessant battles, at the risk of undergoing a few delusions, on occasions.

### ★★★★★ Mars inconjunction Uranus, orb 2'

This Uranus-Mars dissonance indicates frequent commotions. Your actions may be foolhardy and thoughtless. You may not control your temper and you let impulsiveness take over logics. This brings about drastic, whimsical or untimely decisions. There is no monotony in your life: thunders and tyrannical behaviour are on the agenda! Your fighting spirit certainly allows you to cope with life hardships. Nevertheless, beware of damages. As one wants to act as a hero, one can make mistakes. Because forces are overestimated or because inflexibility forbids compromise solutions. Therefore, it is important to balance your decisions and to avoid solutions that are as final as inappropriate.

## Your Intellect and Your Communication Style

You are a “free-thinker”, Sharon Tate, and you tackle problems with a swift and efficient mind. Freedom, progress and originality are your driving forces. You are resolutely future-oriented and with ingenuity and inventiveness, you reform what is outgrown and you constantly innovate: psychology, computer sciences, new technologies... have almost no secret for you. Your human and idealist qualities are obvious, you are a very pleasant and interesting interlocutor, even though your rebellious and revolutionary side may be criticized. Indeed, you seem to be driven by a strong argumentativeness: you seldom share your friends' views and, although you may come across as obstinate, intransigent and unpleasant, you do not hesitate to speak the truth! Instead of causing sudden break-ups with your friends, it is advisable that you express your creative potential more persistently whenever your nervous tension is too high.

Communication is your forte, Sharon Tate: you will use your entire intelligence efficiently in order to achieve agreements, compromises, or contracts. You are a born negotiator, or at least, that's what you try to be because you are not mentally self-centred and your thoughts are more aimed at others rather than at yourself.

With this thinking process, you may be dependent on others and somehow too adaptable... Flexible, chatty, and outgoing when you communicate, you lose in charisma and in convincing power what you gain in quick, efficient, but sometimes light, compromise. Matters related to marriage are sometimes dealt with thoughtlessly but cleverly.

### ★★★★★ Sun conjunction Mercury, orb 0° 2'

You know how to play with your image, how to give multiple representations of yourself. A precious asset: you are sensitive to other people's opinion and you adapt yourself to the audience. Of course, there is a "show" side in your manner that may prevent perfect cohesion. But that's the other side of the coin, for an extraordinary capacity to discover. This aspect translates into an acute sense of observation, an intense desire to learn and to bring everything to light. You strive to be informed in many circumstances, to understand the machinery of the world surrounding you, particularly regarding all human topics. And you will change according to that information and the knowledge gained. You have the chameleon's adaptation powers. And its vulnerability, as well.

### ★★★★★ Mercury opposite Pluto, orb -2° 24'

Forget simplicity! You definitely enjoy acting behind the scenes and dealing with what is going on underneath. You play games and you operate in the dark. You leave the front of the stage to others and to the gullible ones. You don't display much sociability. When you are nice, it is because you are looking for flaws. This Mercury-Pluto dissonance mingles unconscious fantasies with reality. When it is kept under control, this aspect becomes an unparalleled source of discernment. To that aim, you must overcome your strong tendency for provocations. It is certainly amusing to play destabilizing games but it may also be dangerous. Keep this treatment for your opponents only.

### ★★★★★ Mercury trine Neptune, orb 1° 48'

Your sense of psychology and of human intimate mechanisms is acutely developed. Your relations are nuanced, clever and guided by a good intuition of individuals. Without effort, you pick up what is at stake in relationships and in contacts. Your « sixth sense » inspires you and may take you into strange roads. On the relations' plane, there is an indisputable subtlety. You know what you should not say or, on the contrary, you naturally find the suitable words. Your natural and non-rational attitudes often prove

right. The unknown fascinates you... Your curiosity for occultism and mystery is keen. Besides, life is a huge human enigma for you.

★★★★★ Mercury trine Saturn, orb 1° 58'

Your vision of the world is rigorous and objective. An exemplary logic characterizes your mental attitude and your human relations. Your discerning faculties overlook no detail. You need to know the whys of your life and to explore the backstage of your surrounding world. The deepness of your relations dismisses superficial connections. It may be the reason why your interest is aroused when you are in touch with elements that are alien to your mode of functioning. You have the soul of a researcher, regardless of the form that your investigations may take. It may be an exacerbated curiosity for human topics or a will to understand relationship stakes. It may also be a hobby or a course of study that introduces you to a riddle. It does not matter! Life is a perpetual quest for the unknown. Your critical mind is highly developed and you take commonplaces for granted only after thorough consideration.

★★★★★ Mercury trine Uranus, orb -3° 05'

Your state of mind is innovative and turns the surrounding world into a constantly moving field of experiences. You ask relevant questions ... and you answer them. Although you are flexible when you ought to, your principles and your beliefs are unwavering. It seems difficult to catch you off your guard. You multiply observations, relationships, contacts and you never lose face: actually, your mobility hides an unshakable determination and a deep lucidity. In a split second, you are able to catch the useful information or the enriching relationship. The original and fanciful steps you take exclude monotony. Your approach to life is amazing!

## Your Goals, Motivations, Career, and Destiny

### Your Sun is posited in the 7th House

To assert yourself, Sharon Tate, you cannot rest until you multiply your contacts. Although you do not consciously understand your ambition early in life, you need to shine through your relationships.

It may take the form of a tendency to rapidly get involved in associations, groups or clubs; you feel fine as soon as people are around you because your communication skills are always highlighted and appreciated; your style is not what matters most because your main concern is to be noticed as soon as you are in contact with the world.

You are meant for marriage, the ultimate form of association. Usually, your destiny is dependent on your marriage, either directly through its consequences on your career and your lifestyle, or indirectly and, in the long run, through the supports and help you may gain, particularly owing to your honesty and your assertive skills. Marriage constitutes the apotheosis of your ambitions. As you unconsciously understand it, your entire will strives to achieve this aim since your adolescence. You have the required flexibility and talent to turn the life of your couple into daily harmony.

This area is only one of the facets of the fields where you positively exercise your will but... you do so with so much strength and talent!

With this configuration, everything seems all roses. However, it is not as simple and easy as it may look:

your will to shine through others and your almost frantic search for contact may hide a fear of solitude and a lack of self-confidence. Why would you constantly seek confirmation of your own worth into other people's eyes if it were not to dispel your own doubts?

You are easily influenced and your apprehension about loneliness and not being up to it may cause troubles and out-of-proportion reactions; struggles, conflicts of authority or even lawsuits may be harmful. You often get over them because your determination to show that you are at your best is stronger than anything else.

Your challenge is to manage to please others and to conceal your domineering and too assertive side: however, do not make too much effort because, in all cases, you will be equally appreciated. Remember that it's better to let well alone!

### **The ruler of your chart is in the 3rd House**

The ruler of the Ascendant, also referred to as the chart ruler as explained in a previous chapter, is also posited in one of the twelve Houses of the chart. Just like the Sun in his House, the ruler of the Ascendant provides certain abilities, or it makes you appreciate more keenly certain areas of life.

The ruler of your chart is in the 3rd House, Sharon Tate. In this configuration, it facilitates your exchanges with people, your short trips, your correspondence, and your capacity to adjust to situations and people, particularly the members of your entourage, as well as your siblings if you have any.

### **Aspects influencing your ambitions**

Regarding your destiny or your career, the following aspects of your natal chart allow to fine-tune what has just been said above:

#### **★★★★☆ Sun opposite Pluto, orb -2° 03'**

You are dealing with both sides of the coin. People are mistaken when they think that they know you well, because the image you project does not necessarily depict what you really are. You may look like any given model, whereas you actually consider social values to be empty and childish. Deep down, you are an anti-establishment person and you do not belong to the world and its laws. Or, on the contrary, you may project a more marginalized image and make it a point of honour to literally stick to your aspirations' ethics. You do not know who you are really, and where you stand. You may choose some sort of marginality, the adherence to another realm and a different scale of values. Unless you choose a life that apparently lives up to the expectations of others. In that case, you preserve a corner for your private secrets, with no norms, no fashion concerns, relationships off the beaten tracks, passions very removed from conventions. Your attitudes may seem paradoxical as you shift from commitment to refusal and from involvement to withdrawal.

#### **★★★★☆ Sun trine Saturn, orb 1° 38'**

This aspect indicates a firm and discreet will, a rigorous and objective character. You are clear-sighted, particularly in difficult situations. You enjoy the moments of calm and solitude during which you can review your life at will. Your judgments are enduring and often extremist. You are outraged by injustice and inconsistency. When a problem arises, you do not take the easy way out with short-term solutions, on the contrary, you strive to solve the issue thoroughly. Better than anyone else, you challenge yourself, you review your choices and your attitudes. This is the reason why you are capable of handling crises and



of overcoming any obstacle that requires an in-depth and relevant response. You may lack spontaneity but your behaviour reveals your wisdom. When you are facing an issue, you put forward the good question, to others, but also to yourself.

★★★★☆ Sun trine Neptune, orb 2° 09'

This harmonious Sun-Neptune aspect indicates a highly developed intuition and clear-sightedness and sometimes, a sixth sense. Mental images or information drawn from the unconsciousness impress your mind. What was only a muddled feeling turns into certainty and deep conviction. You do not necessarily need to justify your attitudes: you take a decision because you feel that you have to do so, although you may not control the underlying logics. The danger is that you may follow fanciful or adventurous roads. Beliefs you cannot explain may prove wrong or over-optimistic. However, your intuition is seldom misleading. One last comment: there is often a keen curiosity for the « bizarre » and the paranormal with this planetary aspect.

★★★★☆ Pluto trine Midheaven, orb -2° 55'

Pluto is in soft aspect with your Midheaven, Sharon Tate. Your natural perspicacity and your propensity to move deeper into the understanding of all the things surrounding you may favour your career. Besides, in some circumstances, secret protections or relationships at work in the dark may very well help you climb up the stairs to success. At the same time, your intuition and your capacity to overcome pitfalls are your constant assets.

★★★★☆ Sun trine Uranus, orb -3° 25'

This aspect reinforces the determination as well as the will to further your original, sometimes revolutionary, ideas and designs. Your capacity of innovation is important for your image. You have the soul of a leader. You display a forceful and synthesizing mind. You may tend to oversimplify or to schematize situations. In most cases, you know where you are heading to and how to reach your goals. Your determination is two-edged... not everybody will appreciate your contrasted standpoints. It is yes or no, black or white! This planetary configuration indicates certainties. When it comes to acting according to your inner motivations and to respecting your models, you can show an unusual willpower and sweep aside all obstacles lying on your path.

★★★★☆ Neptune opposite Midheaven, orb -7° 07'

Neptune is in opposition to your Midheaven, and therefore, he is at the same time in conjunction with your Imum Coeli which symbolises your roots, your family, the home where you were born, as well as the home you set up, Sharon Tate. Thus, this is not a dissonance strictly speaking, but a capacity of fusion with your original environment through emotion and instinct, and which you use amazingly well. There is a counterpart, of course, and with this configuration, you feel deeply comfortable at home, to the extent that you tend to set aside your professional goals, or to postpone them. Nevertheless, your empathy, your abilities to understand your close friends, and your propensity to create osmosis within your private sphere are very much worthwhile! You must not forget that, ineluctably, you must also plunge into the great bath of society and take a chance with people you do not know. Taking action in society is not necessarily in contradiction with feeling comfortable at home. You must totally integrate this truth in order to experience your professional life as successfully as your family life.

★★★★☆ Saturn sextile Midheaven, orb -3° 2'

Thanks to this soft aspect between Saturn and your Midheaven, your long-term efforts and your perseverance are rewarded, and you gradually climb up the stairs of success. Time is your ally as far as

your career and social destiny are concerned. Carry on the good work, and rest assured that your seriousness and your obstinacy are appreciated. They are instrumental in your success, especially during the second part of your life.

★★★★★ Sun sextile Midheaven, orb 4° 58'

In the professional and social status areas, Sharon Tate, you know what you want, and you know how to cleverly obtain it. Because the Sun and your Midheaven are in agreement in your natal chart, you have no qualms and no hesitations when it comes to defining the strategy for reaching your goal.

★★★★★ Mercury sextile Midheaven, orb 5° 19'

Mercury in soft aspect to your Midheaven enables you to easily communicate with your entourage and to climb up the social ladder, Sharon Tate. Your strategy is often good, and you correctly think about your interests. Do not change anything!

## Your Assets and Your Part of Joviality

This planetary configuration in your chart is very positive, Sharon Tate, because Jupiter, the planet of Greater Fortune, is in his exaltation, which means, in a privileged position. Jupiter protects your family area and later, your own home. Your sense of responsibilities is increased, your inclinations for comfort and customs are strengthened; usually, you are well integrated in society. You mature affectively early, and this fact enables you to avoid many setbacks. The only danger with this pleasant configuration may be your attraction to good things, in all areas, and their consequences.

Although Nature's nudge in the right direction is not spectacular here, Sharon Tate, it is very real, nonetheless. Your sense of dedication, your generosity, and your compassion are developed to such an extent that they often enable you to happily find fulfilment in non-mediatised areas such as humanitarian work and charities. Your human qualities are strongly favoured when you strive in obscurity, discretion and silence. Your reward is a life that is rich and not limited to material contingencies.

The planet Jupiter symbolizes expansion, broadness and generosity. Jupiter is associated with the functions of synthesis, enthusiasm and optimism. In your natal chart, his house position is more important than his sign position because, like Saturn, Uranus, Neptune and Pluto, he is a slow planet. Many people born in the same period have Jupiter in the same sign. This is the reason why the sign occupied here is less meaningful than when it is occupied by the so-called fast planets, i.e. the Sun, the Moon, Mercury, Venus and Mars. Therefore, some caution is to be exercised as you read what follows.

Jupiter in Cancer is in the sign of his exaltation, which means that he is at great ease and he can express his essence more powerfully. He amplifies your emotions, your imagination and your optimism. You can be a good head of family or you develop a natural interest for matters linked to your home, your roots, your patrimony or that of your family. All your domestic affairs are protected.

## Your Serious Side

Your liveliness and your superficiality are slowly transformed into secondarity, profundity of reflection, and interest for knowledge, contacts and logic.

As soon as you become a member of a community, and when you are surrounded with people or with friends, you instinctively protect yourself, and you even hide, Sharon Tate. There is nothing you can do against this. In public, you do not show your real face, but in friendship, you are loyal and reliable.

You prefer quality to quantity, and your friends have every reason to be happy that they won your confidence because they know that they can rely on you under all circumstances. Your friends are usually much older and more seasoned than you.

The planet Saturn symbolizes contraction, effort, time, limitation and concentration. Saturn eliminates anything that is not authentic, sooner or later. It is impossible to cheat him as he gives an irresistible desire to form a coherent whole with oneself, in responsible and wise ways. He is the great purifier. He represents our limitations but also our truth. In your natal chart, the house position where Saturn is posited is more important than his sign position because, like Jupiter, Uranus, Neptune and Pluto, he is a slow planet. Many people born in the same period have Saturn in the same sign. This is the reason why the sign occupied here is less meaningful than when it is occupied by the so-called fast planets, i.e. the Sun, the Moon, Mercury, Venus and Mars. Therefore, some caution is to be exercised as you read what follows.

Saturn in Gemini decreases your lightness, your frivolousness and your heedless. You become more thoughtful, more concentrate and you learn to deeply funnel your ideals; your practical sense is increased, your concern for punctuality and your thirst for precision are reinforced.

## A Few Special Points

### Your Uniqueness and Your Utopias

Powerful protections, friendships, and supports are granted to you at a jerky rhythm throughout your life. There may also be break-ups that are as brutal as they are easy to forget because you manage to ensure that your contacts are brilliantly revived.

The friends you meet have strong personalities, or they may be quite special persons; indeed, you think of friendship as a rich and varied soil in which everyone must bring one's own contribution with one's touch of originality and difference. Otherwise, what's the use?

The danger is that you may embark upon projects that you cannot see through in the long run because they are too utopian. You may also count on partners who are too eccentric to be reliable. Or, on some occasions, you may show too much independence of mind or a boldness that is too strong to really last.

With this typical configuration, your popularity may fluctuate and disappear as quickly as it comes. It is up to you to set the limits of originality that you must not overstep, lest you should undergo unfortunate consequences.

### Your Inspiration and Your Illusions

The way you think and communicate, as well as the organization of your trips, are deeply emotional and sensitive and lack rigour. On the other hand, you are able to "sense" things directly. Your mind gains in

synthesizing ability what it loses in analysis capacity.

You have bohemian ideas, and the way you look at things is quite flexible. As you daydream and you indulge in your emotions, you may be cut off from reality and may lose important relationships! Do not run away, do not tell lies, and take advantage of the best aspects of this configuration: intuition and inspiration.

## Your Passion and Your Authority

Your close friends are aware that your underlying tension may break open as soon as you feel threatened or when your honour is tarnished by ambiguous actions or talks. You have an innate taste for power, and you exude a strong form of magnetism and authority.

Your need to transform both your environment and your personality may prompt you to display aggressiveness. But more often than not, it remains a form of blackmail in order to dominate others, something similar to the chess principle that “threat is better than implementation”.

## Your Isolated Planets

In general, the ten planets of the chart are connected to other planets by major or minor astrological aspects. It is owing to those ties that the planets' energies can manifest in the chart owner's personality and play out within safeguards according to a specific tonality.

It seldom happens that in a natal chart, a planet is totally disconnected from the nine other planets.

Astrologers have observed that when such a case occurs, the person feels the energy of the unaspected planet in quite a singular way, very jerky and powerful at the same time. Thus, for instance, the famed astrologer Jean-Baptiste Morin de Villefranche wrote that "an unaspected planet heralds that something strange or extraordinary will take place regarding the meanings of the house in which the said planet is posited" (source : l'astrologie selon Morin).

Rules for detecting an unaspected planet: among all the testimonies that we have reviewed to this day, based on our experience, we tend to agree with American astrologer Janis Huntley who accepts seven aspects, which involve the zodiacal twelve sections of 30 degrees. The aspects to be considered are the conjunction (0 degree, cooperation or tension), the semi-sextile (30 degrees), the sextile and the trine (60 and 120 degrees respectively, aspects of cooperation), the square and the opposition (90 and 180 degrees respectively, tensed aspects), and the quincunx (150 degrees, slightly tensed). In this detection, the chart's angles are not taken into account.

In any case, it is important to remember that an isolated planet clearly expresses its influence when it is a personal planet. Thus, when the Sun, the Moon, Mercury, Venus, or Mars is isolated, it is certain that the effects described by Jean-Baptiste Morin de Villefranche will become manifest. As for Jupiter, Saturn, Uranus, Neptune, and Pluto, one must be cautious because the volume of cases documented is not yet large enough.

Your chart has no isolated planet, and this particular case does not apply to you.

## Annex 1: Your Minor Dominants

The five following dominants are less significant than those described at the beginning of your report. They may not be strongly felt. In some cases, they add several minor details to the analysis of your character, but they are rather for curiosity purposes. It is not necessary to take them into account when you first read your portrait.

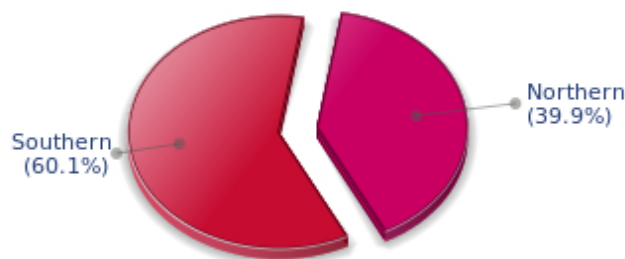
### Your Planetary Repartitions: Northern, Southern, Eastern and Western Hemispheres

The axis linking the 1st house's cuspide (the Ascendant) to the 7th house's cuspide - the Descendant - divides the zodiac into two bowls, a superior bowl, in the South, and an inferior bowl in the North. Quoting an expression by the famous American astrologer Rudhyar, the Southern part and the Northern part correspond to two functions: "being" and "doing". Other concepts are also associated with this North and South distribution, such as introversion - Northern hemisphere - and extraversion - Southern hemisphere - being or appearances, inner life or external life, reflection or action, dreaming one's life or living one's dreams, the abstract or the concrete, backstage or limelight.

This is not about determination but about personal inclination: thus, some people will be thrown into public life despite a prominent Northern hemisphere. If this happens, however, it will not be due to their will, their taste or their deep nature. Conversely, a prominent Southern hemisphere will not bring about a famous destiny to its owner, even if he tends to turn the spotlight on himself, or if he looks for a more active life. It is a matter of deep nature and natural inclination. Of course, none of the typologies is "superior" to another.

In your birth chart, Sharon Tate, the ten main planets are distributed as follows:

### Your Northern and Southern Hemispheres



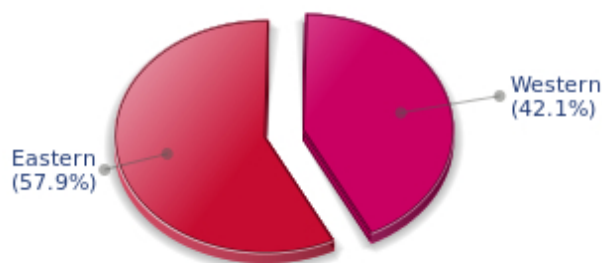
Sharon Tate, the predominance of planets in the Southern hemisphere prompts you to take action, to draw attention on yourself, and to make your actions and what you have in mind visible to everyone. Sometimes, without giving a single thought to, and to the detriment of, a richer inner life and a deeper and wiser reflection. Action and communication are inevitable in your opinion and you tend to think that the only thing that matters is what is seen! This is not always true, and it is up to you to progress through the development of inner qualities such as meditation, solitude and imagination so as to become stronger.

The birth chart is divided into two other parts, Eastern and Western, by the axis linking the Midheaven to the Imum Coeli.

The Eastern part, on the Ascendant side, shows the person's ego, will, magnetism, and vitality, whereas the Western part, on the Descendant side, symbolizes other people, communication, relationships and their influence, as well as flexibility and adaptability.

Sharon Tate, here is the planetary repartition in your Eastern and your Western hemispheres:

### Your Eastern and Western Hemisphere:



Sharon Tate, the East and West sides are well balanced in your chart. This means that you are not too determined or authoritarian, and that you are neither impressionable nor fragile. You are capable of taking decisions, in full awareness, without anyone's help when circumstances so require. However, you have no problem taking your entourage's viewpoints into consideration, with tact and intelligence.

### Your Yin and Yang Polarity

The twelve signs are divided into two polarities, called active or passive, or sometimes masculine and feminine, positive and negative, Yang and Yin. This classification corresponds to two quite distinct tonalities, the first one bringing extraversion, action, self-confidence and dynamism, the second one, introversion, reactivity, reflection and caution. None is superior to the other, each group has its own assets and shortcomings. Odd signs - Aries, Gemini, Leo, Libra, Sagittarius and Aquarius - belong to the first group, whereas even signs - Taurus, Cancer, Virgo, Scorpio, Capricorn and Pisces - belong to the second group.

## Your Yin and Yang Polarity



According to the disposition and qualities of your planets and angles, you are rather influenced by Yang energy, the active polarity, Sharon Tate: more concerned about actions than reflection, you sometimes rush without standing back and without the deepness that is needed. However, your spontaneity prompts you to take fresh starts, even after repeated failures caused by your rashness.

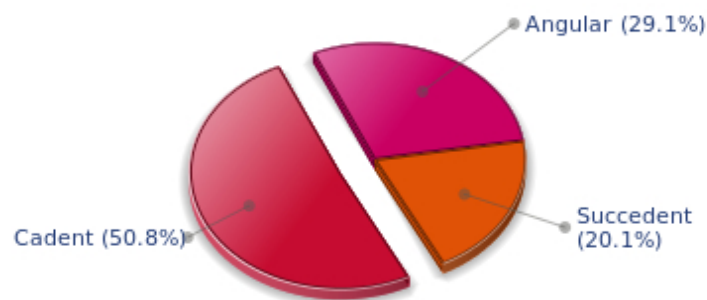
### Your Houses' Accentuations

Houses are split up into three groups: angular, succedent and cadent.

The first ones are the most important ones, the most "noticeable" and energetic houses. They are the 1st, 4th, 7th and 10th houses. Their cuspides correspond to four famous angles: Ascendant for the 1st house, Imum Coeli for the 4th house, Descendant, opposite the Ascendant, for the 7th house and Midheaven for the 10th house, opposite the Imum Coeli.

Planets are evaluated according to a whole set of criteria that includes comprehensive Western astrology rules. At their turn, planets emphasize specific types of houses, signs, repartitions etc., as previously explained.

## Your Houses' Accentuations



Cadent houses, namely the 3rd, 6th, 9th and 12th houses, are very emphasized in your chart, Sharon Tate.

They indicate important potential for communication, adaptability and flexibility. These houses are symbolically linked to the mind and intellect. The relative weakness implied by these characteristics indicates your tendency to hesitate or to be indecisive, but also your remarkable ability to start off again, which is a nice quality, finally: you can easily get yourself out of a tight spot thanks to your mobility and casualness, in the best sense of the term. This group of houses corresponds to evolutionary characteristics of your personality. However, they are only indications and you must include them in the rest of your chart in order to see whether they are validated or not!

### Your Esoteric Decanates

Each sign contains 30 degrees and can be divided into three equal parts: the decanates. The Tradition indicates that specific meanings can be associated to each of the three decanates. Their sphere of activity is usually limited to the Sun sign, however, it is even more interesting to observe the distribution of all the planets in the chart to get an idea of the respective importance of the three decanates, which can complement the description of the personality.

These meanings must be considered with the greatest caution. Indeed, they are minor characteristics that can only underline other outstanding traits of character.

Traditionally, the first decanate highlights the characteristics of the sign where a planet is located. The two other decanates correspond to sub-dominant planets, depending on the nature of each sign. This system leads to a multiplication of meanings and it is impossible to have a clear understanding: here, we prefer to give only the meaning of one decanate in comparison with the other two, within the birth chart as a whole. Again, the greatest caution is needed with regard to this minor indication as it is not always reliable: it is not essential that you read these texts in the beginning. You can get back to them later on, once you have read more important interpretations

### Your Esoteric Decanates



The first decanate, which means the part between 0° and 10° of any zodiacal sign, prevails in your natal chart, Sharon Tate: this decanate is traditionally linked to vitality and physical constitution, and may indicate that you efficiently express your concrete energy on the material and sensual planes.



## Annex 2: Karmic Study

The karmic theme is a good complement to the psychological portrait, or natal chart. This analysis is based on the positions of the Lunar Nodes, the Black Moon and the Part of Fortune: they are also called fictitious points and describe the spiritual purpose of your destiny. Because there is in all of us an experience and a quest, our life is an evolutionary journey... provided that we head towards the right direction, of course! Indian astrologers highly prize the Nodes axis (North Node and South Node). It is the Ariadne's thread that we are invited to follow. The Black Moon indicates the sector where we are most likely to transform or to transcend, whereas the Part of Fortune points out the area where we can easily express our specificity.

### The Lunar Nodes: a spiritual path

Lunar Nodes have their roots in the Indian tradition and they are based on a simple concept: each of us have a mission of their own, here on earth, a destiny, a course. According to the Indian philosophy, life is a school: the nodal axis describes our past experiences (South Node, our karma, our spiritual inheritance or our previous lives), and our aims on earth (North Node, our Dharma, the purpose of our current incarnation). This is the reason why the study of the lunar nodes is called "Karmic astrology". Here, we shall not step into hypothetical past lives. Wherever our current trends may come from, all that really matters is that we become aware of the purpose of our life, its finality and our dharma. We are likely to understand our life purpose around the age of 37, when the Lunar Nodes return to their natal position.

You make friends easily and you earn your entourage's confidence and esteem. Very early, you develop an acute sense of fraternal relations, generously receiving and giving. This spirit of mutual aid may lead to a happy-go-lucky attitude that may border on carelessness... As you rely too heavily on friendship, there may be a danger to undergo a few setbacks: idealism and spontaneous dedication may meet with ungrateful reactions or the indifference of the very persons whom you try to help. Your destiny is probably marked with a quest of individual achievement. It is of utmost importance that you create, that you beget a fruit, a work or a child. Little by little, you become independent, without selfishness, but with the strength of those who know that they can only rely on themselves. Do not hesitate to live your dreams to the end and to engender, over and over again. Creation, whatever its form, is the path to your fulfilment. You slowly discover the pleasure to design as you please, without outside interference. It is important that you find an area for your personal expression and, as the poet says, "before the eyes, constantly, night and day, either a great labour or a great love".

You are a rebel. Your extremist attitude earns you successes and setbacks, alternately, and prompts you to transform your lifestyle. However, you long for stability. Your life challenge is to accept to enjoy life's simple joys without gratuitously challenging your assets. As years and experiences go by, you learn the value of what you possess. Things that used to make you indignant, because they were too comfortable, become gradually highly worthy. Your progression encourages your level-headedness: in a first stage, you are prone to struggles, dissidence and contestations... that cause more delusions than satisfactions. Therefore, you set aside your outbursts of anger and strive towards wisdom: acceptance of facts – which does not mean resignation –, renunciation without submission. Although it may not please the frenzied adventurers, you need a minimal dose of quietness and comfort if you are to give of your best and to fully blossom!

## **Lilith or the Dark Moon**

The Black Moon is the spark of refusal and distance that is dormant in all of us. Depending on the sign where she is found in your chart, she highlights the desire to transform and to sublimate a part of your life. The Black Moon is unfathomable and mysterious. She gives a different dimension to the sector she touches. Her manifestations are subtle; nonetheless, she is powerful, implacable, demanding to the extreme... The Black Moon is also called Lilith. She is the inner flame of your heroism and insubordination.

One of the main drives of your life is your rejection of mediocrity: the intention is commendable although it is two-edged. You attach so much importance to charisma that you may reject a person whom you deem – wrongly – unworthy of your esteem! If you avoid this trap, the requirements that you demand from yourself as well as from your close friends become an exceptional springboard for evolution.

Your refusals are irrevocable: you may show violence when the situation is stuck... When facts hamper your aspirations, when everything does not seem to start moving soon, you tend to force your ways through events, regardless of the price to be paid. Your strengths and your weaknesses stem from all that: you may exercise a misplaced extremism, claiming great causes, whereas order can be restored in the simplest of ways. However, better than anyone else, you know how to maintain the pressure whenever it is needed, when the desire for deep changes takes precedence over submission or abdication.

## **The Part of Fortune in House**

The Part of Fortune is a very ancient fictitious point that depends on the lunar phase at the time of birth. The astrological house tenanted is particularly strengthened. In your chart, the Part of Fortune is in the 8th house: you need to constantly transform your life, to evolve and to shed your skin. You do not hesitate to regularly question the basis of your manner. Everything is death and revival and the wheel of life is ruthless: what was still yours yesterday will be a mere souvenir tomorrow... Your wealth is the know-how you demonstrate when you cope with changes imposed by events, while always remaining true to yourself.

## **Retrograde Planets**

The karmic tradition insists on the issues related to the so-called retrograde planets. They are considered to be the inheritance of a past that was not well experienced, a sort of unfinished business. The interpretations of the retrogradation may seem negative or excessive to you. However, you may relate to a scenario that you have often and repeatedly experienced... as if you underwent several setbacks that all have the same cause. Until the day you become aware of it and you can free yourself from it! Through the slow integration of these planetary energies, you will be able to overcome your difficulties and to pay your karmic debt. Actually, each retrograde planet highlights an opportunity for evolution. Nothing can be achieved without the will to grow spiritually and to defeat your own demons.

The planet Mercury was retrograde on the day of your birth. You probably have to make an effort to harmonize your relations: you are prone to screen others with a critical eye and you do not overlook the slightest flaw. You are exceedingly clear-sighted and you approach your contemporaries with distance rather than with natural. This type of behaviour may be an asset: your enquiring and pernickety mind prevents you from being too gullible. However, your reservations may impede your communication. As

time goes by, you learn to establish contacts more spontaneously. During your childhood, you faced problems of expression in your heart of hearts: your doubts prompted you to project an image that was out of touch with the reality... turbulent or withdrawn, you could hardly establish conventional ties. As an adult, you are in a better control of these elements. You still have to find the right way to tell who you really are: this is how you can improve your relationships.

With Jupiter retrograding on the day of your birth, the lesson is about grasping the opportunities that are offered to all of us but that some people take advantage of, while others don't. Persons who quickly adjust to circumstances are more likely to achieve their ambitions than those who need to be encouraged to take action. During your childhood, you may not have efficiently responded to life's concrete enticements, leaving other "luckier" people to achieve what you were dreaming of. You preferred to enjoy yourself, here and now, rather than to look for new paths of development or exploration. It is possible that you were not optimistic enough. Enterprising minds were alien to you... Later, you find out that, indeed, you give little importance to the credit of the frenzied expansion praised by the modern world. Your path is not oriented towards personal prestige. With subtlety, you integrate non-material values and you accept well the fact that you missed past opportunities.

The karma associated with Saturn may border on self-censorship: during your childhood, particularly, you were doubtful of your abilities and your talents. You had a propensity to put yourself in a no-win situation and to under-estimate yourself. Obstacles abound: taboos and prohibitions of all kind slow down your evolution. Little by little, you learn to re-evaluate your possibilities and to gain more self-confidence. Your personal rigour then turns out to be constructive: you are not destabilized by life ordeals and you practice a self-discipline that favours steady evolution. Although your path may be steep, it is nonetheless safe.

Uranus was retrograding on the day of your birth: you have the soul of a rebel and your behaviour may often be tyrannical or extremist. Your manner has brought you setbacks. You lack the flexibility that spares you the pain of forcing your ways through events. The danger may be that you get trapped into rigid patterns and into personal logics incompatible with others'. This is precisely what your life's lesson is about: as years go by, your judgments are more qualified and your attitudes become less cut-and-dried, less stubborn. You must lose the essentially individualistic character of your childhood and be more open to other people's ideas and problems. In other words, a path of love. Without losing your remarkable resolution, you must practice some form of renunciation and be sensitive to various logics that constitute the wealth of your social life.

Neptune retrograding concerns spirituality. You may have expressed early in life a few reluctances about the subtle world of faith. You may have ignored destiny's signs and winks and you preferred to stick to your certainties, to a rigorous and objective control of your life. You dread your own aspirations and you readily trust others': this causes a lack of autonomy and the feeling that you may not receive as much as you give. However, several delusions teach you that you must relativize your calculating and methodical attitude and open up to the irrationality of love in order to find an inner and more spiritual progression. Embracing the invisible is a process that unfolds as years and experiences go by. Your own generosity increases as you become aware of your entourage's generosity.

Pluto retrograde suggests power issues and mishandled relations: for you, everything comes down to power struggles, submission and domination, Machiavellian manoeuvres, including within your couple... The results are complex behaviours and an obsession for the power to influence people. Yet, life teaches that you must simplify your relations and adopt more transparent attitudes and healthier desires... As

years go by, you will tend towards more simplicity and you will slowly discover that human energy can, and must, be at the service of the good, or of well being, in compliance with our individual progression.

**N.B:** modern astrology attaches less and less importance to the principles of retrograding planets.

## Conclusion

A few remarks are needed here in order to allow you to fully take advantage of your astrological portrait: firstly, do not forget that a birth chart is also a photograph of the sky at birth and a structure that not only contains the personality's characteristics, but also its potential evolution.

We all know that, in real life, people begin to know themselves when they are in their forties, or even later. Likewise, several traits of character in a portrait may seem surprising: in most cases, it means that such features are not yet developed.

Some personalities reveal themselves late in life, whereas others are more precocious. It must be remembered that psychological structures are in a state of continuous evolution because they are influenced by unfolding events and gradual maturity. We can never underline strongly enough the "mobile" nature of the personality, throughout a lifetime.

On the other hand, it is difficult to discriminate what is "already present" at this moment in your life when you are reading your chart's interpretation, from what will appear later in the logic of your evolution: you must sort out all the pieces of information provided and, in most cases, you will see that your astrological portrait is helpful for your endeavours to know yourself better.

Finally, several readings of an astrological portrait are usually necessary in order to absorb all its different meanings and to evaluate the relevance of each character trait.

In any case, better self-knowledge obviously contributes to faster personal blossoming, and it is undoubtedly one of astrology's major roles: contributing to know oneself better, in order to improve more rapidly, to deal with one's weaknesses and to avoid its drawbacks, and to take advantage of one's assets as efficiently as possible.

---