





## Sean Penn's Astrological Portrait



<b>Introduction</b>	<b>2</b>
<b>Your Planets, Houses, Aspects, and Natal Chart</b>	<b>4</b>
<b>Preamble</b>	<b>7</b>
<b>Your Planetary Repartitions</b>	<b>8</b>
<b>Your Dominant Modes and Elements</b>	<b>9</b>
<b>Your Dominants: Planets, Signs and Houses</b>	<b>10</b>
<b>Your Style, Behaviour, and Peculiarities</b>	<b>15</b>
<b>Your Sensitivity</b>	<b>19</b>
<b>Your Affectivity</b>	<b>20</b>
<b>The Way You Take Action and Your Sexuality</b>	<b>22</b>
<b>Your Intellect and Your Communication Style</b>	<b>23</b>
<b>Your Goals, Motivations, Career, and Destiny</b>	<b>25</b>
<b>Your Assets and Your Part of Joviality</b>	<b>27</b>
<b>Your Serious Side</b>	<b>28</b>
<b>A Few Special Points</b>	<b>28</b>
<b>Your Isolated Planets</b>	<b>30</b>
<b>Annex 1: Your Minor Dominants</b>	<b>31</b>
<b>Annex 2: Karmic Study</b>	<b>35</b>
<b>Conclusion</b>	<b>38</b>



# Sean Penn's Astrological Portrait

## Introduction

To fully benefit from this portrait, we suggest that you read its introduction and its preamble carefully, and then that to take the time to soak up the interpretations of each chapter. Given the large number of texts, which mirrors the human being's complexity, you may need to go through the contents several times, so as to get a good grasp of their meaning and to know yourself better. This will reward your patience.

The purpose of this report is to describe your psychological portrait and to highlight the most fundamental features on the personal area. The report begins with the analysis of your planetary dominants and outlines your personality's general traits before going into further detail. Minor dominants are analysed at the end of Annex 1, for purposes of clarity. Your report then delineates the various facets of your personality:

In general, even when relationships are not involved, we express ourselves and we feel according to our character and our personal motivations: this is indicated by the Ascendant and the Sun sign which both give details on the way we function. They shed a tremendously important light which allows to figure out your personality. Here, we describe your Sun sign (your inner self), your Ascendant (your behaviour as seen by others), and the ruler of the Ascendant (interesting additional pieces of information about the style of your personality). These descriptions alone cover nearly a third or a half of your psychological signature, depending on your natal chart characteristics.

Then, we address your sensitivity, or in other words, the way you receive things and how you express your emotions ; it works as a constant filter for all your exchanges, even when it becomes a more secondary element in your amorous relationship, because at that moment, affectivity prevails. Sensitivity is the way you perceive things, it is your radar, your daily mood, and at the same time, it indicates how you react to your entourage, on a daily basis. It is what others immediately see of you. In the second paragraph, we explain in which areas of life your sensitivity and your emotions are strongest, therefore, where you are most vulnerable.

After this, it is your affectivity, the way you love and how you charm, that comes into play as soon as you fall in love: the first part indicates its basic structure or its main form. The second part describes the areas where it is best expressed and how you display it, according to your personality.

A third fundamental area deals with your mode of action and your sexuality: how you behave, how you manage to obtain what you want, what kind of desires you have. There are twelve possibilities, very

different from one another. The study discloses the specific one that applies to you. In the second paragraph, we explain in which life areas you may most efficiently take advantage of your capacity for action and for conquest.

Your ways of communicating and of thinking are obviously among the major elements that must be integrated into the delineation and the description of your personality. Indeed, they influence your general behaviour and may modify or enhance the image your project (for instance, extraversion may “compensate” a weak affectivity, but a huge number of cases are possible). An additional chapter indicates the favourite areas where you enjoy communicating, thinking and meeting with people.

Besides, we analyze an even more personal aspect that is important to define and understand what may occur within your couple: each of us have a centre of interest, a privileged manner to be fulfilled or to achieve our destiny; this main motivation is indicated by the positions of your Sun and your chart ruler in the astrological houses and we provide you with its detailed description.

A natal chart contains the potential for specific fulfilment and a whole range of assets, protections and qualities. How does the lucky factor manifest in your personality? In which area can you best exploit your qualities? The answers are precisely revealed to you in this chapter.

On the other hand, we all feel in us a part of vulnerability, doubts and fears. How does this part of solemnity or serious side play out? How is it possible to handle it in order to evolve and to get rid of useless elements? All this information is provided to you in these two paragraphs.

Then, you can discover three additional traits of your personality that must be considered as secondary ones. They deal with your predispositions, which means that they need to be triggered by external events because they are not influenced by your will; let's call it a part of fate. Please, bear in mind that your destiny can unfold only in accordance with what you are: therefore, even if they belong to your more unconscious self, these characteristics are parts of you, definitely.

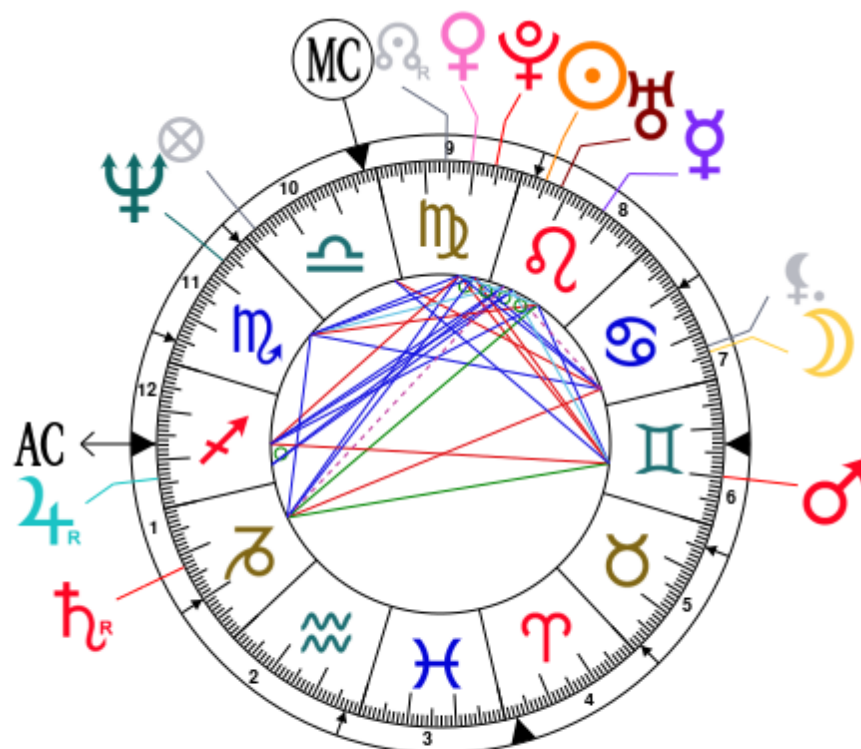
The karmic chart complements the psychological portrait or natal chart. It is based on the positions of the Lunar Nodes, the Black Moon, and the Part of Fortune. These elements of the chart, sometimes referred to as fictitious points, provide information about the spiritual meaning of your destiny. Owing to the fact that we all have in us acquired knowledge and the urge to go on a quest, our life is an evolutionary journey... However, these texts must be read with great caution: this is the reason why you will find this analysis in the Annex 2 of your report.

# Your Planets, Houses, Aspects, and Natal Chart

Sean Penn, born August 17, 1960, at 03:17 PM, Burbank (Los Angeles), California [118.18W ; 34.10N ; 7W00]

Natal Planets				In House	Natal Houses (Placidus)	
☉ Sun	24°58'	♌ Leo		House 8	House 1	16°48' → Sagittarius
☾ Moon	5°43'	♋ Cancer		House 7	House 2	20°00' ♄ Capricorn
☿ Mercury	11°56'	♌ Leo		House 8	House 3	27°09' ♒ Aquarius
♀ Venus	10°26'	♍ Virgo		House 9	House 4	2°26' ♈ Aries
♂ Mars	10°12'	♊ Gemini		House 6	House 5	1°37' ♉ Taurus
♃ Jupiter	23°47' R	♐ Sagittarius		House 1	House 6	25°29' ♉ Taurus
♄ Saturn	12°29' R	♑ Capricorn		House 1	House 7	16°48' ♊ Gemini
♅ Uranus	21°38'	♌ Leo		House 8	House 8	20°00' ♋ Cancer
♆ Neptune	6°37'	♏ Scorpio		House 11	House 9	27°09' ♌ Leo
♇ Pluto	5°30'	♍ Virgo		House 9	House 10	2°26' ♎ Libra
♁ Node	15°40' R	♍ Virgo		House 9	House 11	1°37' ♏ Scorpio
♁ Lilith	6°58'	♋ Cancer		House 7	House 12	25°29' ♏ Scorpio
AS AS	16°48'	♐ Sagittarius				
MC MC	2°26'	♎ Libra				

In keeping with the common practice, we consider that a planet posited within 1 degree of the next house belongs to that house. We allow an orb of 2 degrees for the ASC and the MC.



## List of Your Active Planetary Aspects

Please find below the list of all the active inter-aspects which are interpreted in this report, in addition to your planets in sign, in house, and all your planetary dominants. Since the aspects between slow-moving planets are of a collective nature, they are not displayed, in compliance with our interpretation rules.

- ★★★★★ Sun trine Jupiter, orb -1° 1'
- ★☆☆☆☆ Sun sesqui-quadrate Saturn, orb 2° 3'
- ★★★★★ Sun conjunction Uranus, orb 3° 19'
- ★★★★★ Sun quintile Neptune, orb -0° 21'
- ★★★★★ Sun conjunction Pluto, orb 10° 31'
- ★★★★★ Sun trine Ascendant, orb -8° 1'
- ★★★★★ Moon sextile Venus, orb 4° 43'
- ★★★☆☆ Moon opposite Saturn, orb -6° 46'
- ★☆☆☆☆ Moon semi-square Uranus, orb 0° 55'
- ★★★★★ Moon trine Neptune, orb 0° 54'
- ★★★★★ Moon sextile Pluto, orb -0° 12'
- ★★★☆☆ Moon square Midheaven, orb -3° 16'
- ★★★★★ Mercury semi-sextile Venus, orb -1° 29'
- ★★★★★ Mercury sextile Mars, orb 1° 43'
- ★☆☆☆☆ Mercury inconjunction Saturn, orb 0° 33'
- ★★★★★ Mercury conjunction Uranus, orb 9° 42'
- ★★★☆☆ Mercury square Neptune, orb -5° 18'
- ★★★★★ Mercury trine Ascendant, orb 4° 52'
- ★★★★★ Venus square Mars, orb 0° 14'
- ★★★★★ Venus trine Saturn, orb 2° 02'
- ★★★★★ Venus sextile Neptune, orb -3° 49'
- ★★★★★ Venus conjunction Pluto, orb 4° 56'
- ★★★☆☆ Venus square Ascendant, orb 6° 21'
- ★☆☆☆☆ Mars inconjunction Saturn, orb -2° 17'
- ★★★★★ Mars quintile Uranus, orb -0° 33'
- ★★★☆☆ Mars square Pluto, orb -4° 41'
- ★★★★★ Mars opposite Ascendant, orb -6° 36'
- ★★★★★ Mars trine Midheaven, orb -7° 45'
- ★★★★★ Jupiter conjunction Ascendant, orb 6° 59'
- ★★★★★ Uranus trine Ascendant, orb -4° 5'

## Meaning of Stars

Stars indicate the strength of the aspects. Two solid coloured stars (there are half-stars also), mean that the aspect is powerful enough to be noticed at the first reading.

We strongly advise that you read the paragraphs displaying less than two stars later on, after you have absorbed the full import of the other texts.

The yellow colour indicates a soothing and conciliating aspect, and the red colour, a dynamic and tense aspect. The red aspects enable you to evolve, to take action, and to learn to turn your "weaknesses" into assets through your life experiences. The yellow aspects are innate strengths on which you rely in order to grow better with the former...

## Preamble

When interpreting a natal chart, the best method is to start gradually from general features to specific ones. Thus, there is usually a plan to be followed, from the overall analysis of the chart and its structure, to the description of its different character traits.

In the first part, an overall analysis of the chart enables us to figure out the personality's main features and to emphasize several points that are confirmed or not in the detailed analysis: in any case, those general traits are taken into account. Human personality is an infinitely intricate entity and describing it is a complex task. Claiming to rapidly summarize it is illusory, although it does not mean that it is an impossible challenge. It is essential to read a natal chart several times in order to absorb all its different meanings and to grasp all this complexity. But the exercise is worthwhile.

In brief, a natal chart is composed of ten planets: two luminaries, the Sun and the Moon, three fast-moving or individual planets, Mercury, Venus and Mars, two slow-moving planets, Jupiter and Saturn, and three very slow-moving planets, Uranus, Neptune and Pluto. Additional secondary elements are: the Lunar Nodes, the Dark Moon or Lilith, Chiron and other minor objects. They are all posited on the Zodiac wheel consisting of twelve signs, from Aries to Pisces, and divided into twelve astrological houses.

The first step is to evaluate the importance of each planet. This is what we call identifying the dominant planets. This process obeys rules that depend on the astrologer's sensitivity and experience but it also has precise and steady bases: thus, we can take into account the parameters of a planet's activity (the number of active aspects a planet forms, the importance of each aspect according to its nature and its exactness), angularity parameters; (proximity to the four angles, Ascendant, Midheaven, Descendant and Imum Coeli or Nadir, all of them being evaluated numerically, according to the kind of angle and the planet-angle distance) and quality parameters (rulership, exaltation, exile and fall). Finally, other criteria such as the rulership of the Ascendant and the Midheaven etc. are important.

These different criteria allow a planet to be highlighted and lead to useful conclusions when interpreting the chart.

The overall chart analysis begins with the observation of three sorts of planetary distributions in the chart: Eastern or Western hemisphere, Northern or Southern hemisphere, and quadrants (North-eastern, North-western, South-eastern and South-western). These three distributions give a general tone in terms of introversion and extraversion, willpower, sociability, and behavioural predispositions.

Then, there are three additional distributions: elements (called triplicity since there are three groups of signs for each one) - Fire, Air, Earth and Water - corresponding to a character typology, modality (or quadruplicity with four groups of signs for each one) - Cardinal, Fixed and Mutable - and polarity (Yin and Yang).

There are three types of dominants: dominant planets, dominant signs and dominant houses. The novice thinks astrology means only "to be Aries" or sometimes, for example, "to be Aries Ascendant Virgo". It is actually far more complex. Although the Sun and the Ascendant alone may reveal a large part of the character - approximately a third or a half of your psychological signature, a person is neither "just the Sun" (called the sign) nor just "the first house" (the Ascendant). Thus, a particular planet's influence



may be significantly increased; a particular sign or house may contain a group of planets that will bring nuances and sometimes weaken the role of the Ascendant, of the Sun sign etc.

Lastly, there are two other criteria: accentuations (angular, succedent and cadent) which are a classification of astrological houses and types of decanates that are occupied (each sign is divided into three decanates of ten degrees each). They provide some additional informations.

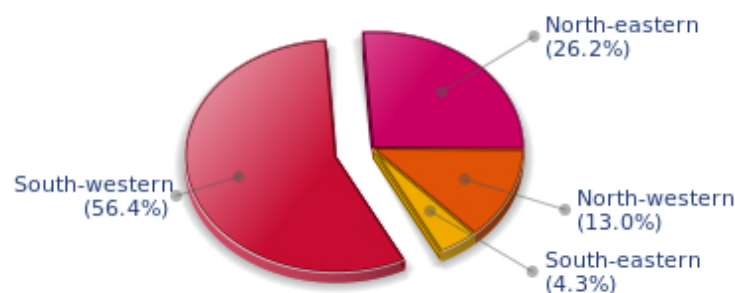
These general character traits must not be taken literally; they are, somehow, preparing for the chart reading. They allow to understand the second part of the analysis, which is more detailed and precise. It focuses on every area of the personality and provides a synthesis of all the above-mentioned parameters according to sound hierarchical rules.

As explained in the introduction of your Psychological Portrait report, minor dominants are analysed at the end of Annex 1, for purposes of clarity.

## Your Planetary Repartitions

Each quadrant is a combination of the four hemispheres of your birth chart and relates to a character typology. The Southern hemisphere – the top of your chart, around the Midheaven – is associated with extraversion, action, and public life, whereas the Northern hemisphere prompts to introversion, reflexion, and private life. The Eastern hemisphere – the left part, around the Ascendant – is linked to your ego and your willpower, whereas the Western hemisphere indicates how other people influence you, and how flexible you are when you make a decision.

### Your Four Quadrants

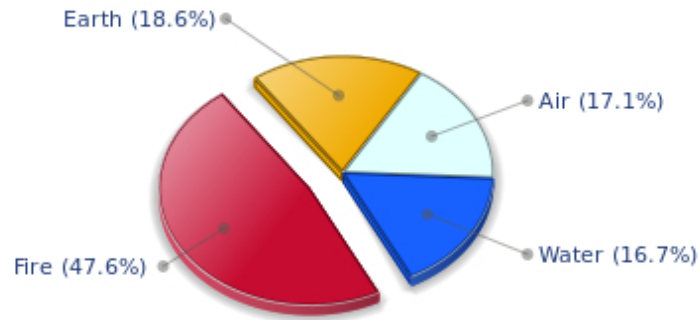


Sean Penn, the diurnal South-western quadrant, consisting of the 7th, 8th and 9th houses, prevails in your chart: this sector brings about a thirst for communication and sometimes a need to take risks in your dealings with others. Relations are a factor of your evolution and your transformation, which you accept serenely. Indeed, what matters to you is the movement and the energy that link you to others and that make you gain more awareness. A kind of rebellion or a desire to get away from it all is rooted in you.

## Your Dominant Modes and Elements

Sean Penn, here are the graphs of your Elements and Modes, based on planets' position and angles in the twelve signs:

### Your Four Elements



Sean Penn, Fire is dominant in your natal chart and endows you with intuition, energy, courage, self-confidence, and enthusiasm! You are inclined to be passionate, you assert your willpower, you move forward, and come hell or high water, you achieve your dreams and your goals. The relative weakness of this element is the difficulty to step back or a kind of boldness that may prompt you to do foolish things.

Like the majority of Earth signs, Sean Penn, you are efficient, concrete and not too emotional. What matters to you is what you see: you judge the tree by its fruits. Your ideas keep changing, words disappear, but actions and their consequences are visible and remain. Express your sensitivity, even if it means revealing your vulnerability. Emotions, energy and communication must not be neglected; concrete action is meaningless if it is not justified by your heart, your intellect or your enthusiasm.

The twelve zodiacal signs are split up into three groups or modes, called quadruplicities, a learned word meaning only that these three groups include four signs. The Cardinal, Fixed and Mutable modes are more or less represented in your natal chart, depending on planets' positions and importance, and on angles in the twelve signs.

## Your Modes



The Mutable mode is the most emphasized one in your natal chart, Sean Penn, which indicates a mobile character that is curious and thirsty for new experiences and evolution. You are lively and flexible, and you like to react quickly to solicitations, but don't confuse mobility with agitation, since this is the danger with this configuration - and with you, stagnation is out of the question. Security doesn't matter as long as you are not bored. You optimize, you change things, you change yourself... all this in a speedy way.

## Your Dominants: Planets, Signs and Houses

The issue of dominant planets has existed since the mists of time in astrology: how nice it would be if a person could be described with a few words and one or several planets that would represent their character, without having to analyse such elements as rulerships, angularities, houses, etc!

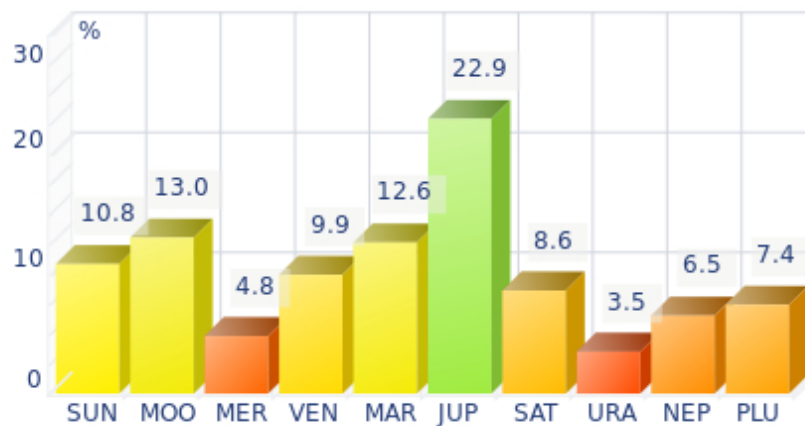
The ten planets - the Sun throughout Pluto - are a bit like ten characters in a role-play, each one has its own personality, its own way of acting, its own strengths and weaknesses. They actually represent a classification into ten distinct personalities, and astrologers have always tried to associate one or several dominant planets to a natal chart as well as dominant signs and houses.

Indeed, it is quite the same situation with signs and houses. If planets symbolize characters, signs represent hues - the mental, emotional and physical structures of an individual. The sign in which a planet is posited is like a character whose features are modified according to the place where he lives. In a chart, there are usually one, two or three highlighted signs that allow to rapidly describe its owner.

Regarding astrological houses, the principle is even simpler: the twelve houses correspond to twelve fields of life, and planets tenanted any given house increase that house's importance and highlight all relevant life departments: it may be marriage, work, friendship etc.

Sean Penn, here is the evaluation diagramme for your planets:

## Your Dominant Planets



The three planets that are most highlighted in your chart are Jupiter, the Moon and Mars.

Jupiter, the planet of expansion, organization, power and benevolence, is quite emphasized in your chart. Like any Jupiterian, you are warm, open, sociable, consensual, active and optimistic. You can use your self-confidence to erase differences of opinion, and you leave the task of analyzing and perfecting things to specialists. Your role, and you know it since you were young, is to gather, to demonstrate your synthesizing and conciliatory mind, and to naturally reap its fruits - power.

You appreciate legality, social order but also order in general. With you as a leader, every plan or human entity can be organized and structured. You excel at supervising. The Jupiterian type is indeed the politician par excellence, and a positive Jupiter in your chart is synonymous with good integration into society, whatever the chosen path.

Is this idyllic picture really perfect? Certainly not: each planet's typology has its own weaknesses. One of yours is pride, like the Solarian, but your will of expansion at all costs may generate a form of exaggeration in everything, endless pleasure, inappropriate self-confidence that could lead you to rough materialism and the thirst for absurd material comfort - in the worst cases, of course.

The Moon is one of the most important planets in your chart and endows you with a receptive, emotive, and imaginative nature. You have an innate ability to instinctively absorb atmospheres and impressions that nurture you, and as a result, you are often dreaming your life away rather than actually living it.

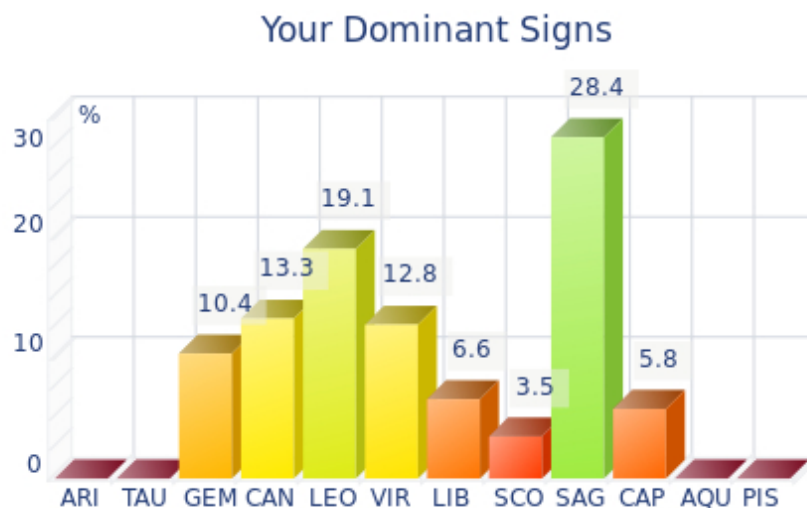
One of the consequences of your spontaneity may turn into popularity, or even fame: the crowd is a living and complex entity, and it always appreciates truth and sincerity rather than calculation and total self-control.

As a Lunar character, you find it difficult to control yourself, you have to deal with your moods, and you must be careful not to stay passive in front of events: nothing is handed on a plate, and although your sensitivity is rich, even richer than most people's, you must make a move and spare some of your energy for... action!

Mars is one of your dominant planets and provides you with its efficient energy and enthusiasm: with a

powerful Mars in your chart, action - but also will and ability to undertake - is not an empty word for you. You are active, dynamic, willing to fight, courageous, and you are never afraid to move mountains, even though risks are part of the adventures that you start with determination.

However, your patience is not always up to your boldness and a kind of feverishness, or even anger, can tarnish the quality of your achievements. That would be a pity since the Marsian is a champion in matters of efficiency! Mars symbolizes display of action, conquering spirit that favours discipline and order - beware of not being fussy - and lies at the frontier between action and brutality, between conquest and potential aggressiveness.



In your natal chart, the three most important signs, delineated according to the above-mentioned criteria, are, in decreasing order of strength, Sagittarius, Leo and Cancer. They are often prominent because your Ascendant and your Sun are posited there. However, it is not always the case: it may be because they are occupied by a cluster of planets, by a planet near an angle other than the Midheaven and the Ascendant, or because two or three planets are very active and form numerous aspects from these signs. Therefore, you partly take on the three signs' characteristics, which are somehow superimposed on your natal chart, and all the more so if any of the signs in question is highlighted.

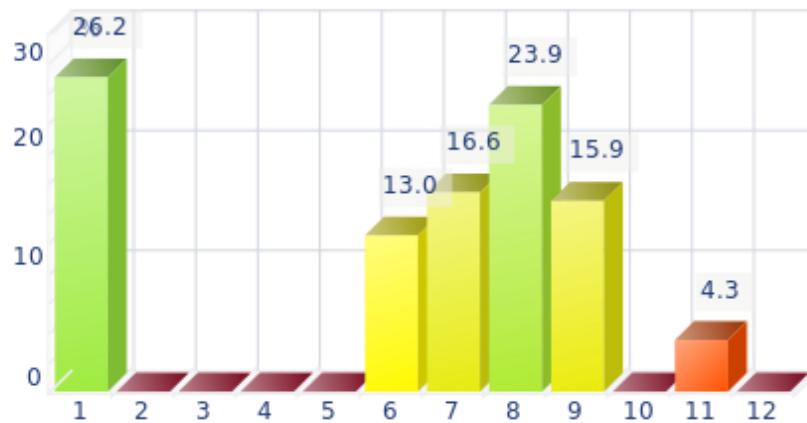
Sagittarius, an adventurous and conquering fire sign, is dominant in your chart: you are enthusiastic, enterprising, optimistic, very sociable, and mobile - you have itchy feet, both physically and mentally. Nobody gets bored with you because you are always planning things and suggesting excursions, at least... when you are around and not already gone on a trip! Obviously, so many movements for one man may scare people off, and some of them may even criticize your brutality or your tendency to lose your temper, but you are so warm and genuine, so expansive, isn't this a good thing? And all the more so, since your sense of humour is overwhelming...

With Leo as a dominant sign, you naturally shine brightly. Your dignity, your sense of honour, and your generosity can almost turn you into a solar mythological hero, a knight or a lord from the ancient times. People may blame you for your selfishness, your pride or your somewhat loud authority, but if you are self-confident, kind-hearted and strong-willed, it surely makes up for your little flaws, as long as they remain moderate...

Cancer is one of your dominant signs and endows you with imagination and exceptionally shrewd

sensitivity. Although suspicious at first sight - and even at second...- as soon as you get familiar with people and let them win your confidence, your golden heart eventually shows up, despite your discretion and your desire for security that make you return into your shell at the slightest alert! Actually, you are a poet and if you are sometimes blamed for your nostalgia and your laziness, it is because your intense inner life is at full throttle...

### Your Dominant Houses



Houses 1, 8 and 7 are the most tenanted ones in your natal chart. To compute their strength, planets and angles are weighed according to various astrological criteria such as swiftness, activity, angularity, rulership etc. From the analysis of the most tenanted Houses, the Astrologer deduces the fields of activity that are most relevant to you, be it because of what you are experiencing, or what you may experience in the future, or because of your deep inner motivations.

With a dominant 1st house, your magnetism is powerful, and your individuality as well as your willpower are out of the ordinary. You are a determined, strong-willed, and assertive person, with this relative criterion at least.

It is likely that you never go unnoticed when you are in a crowd or in a reunion: an important 1st house suggests that you are a charismatic person with above average vital energy, especially if the Sun is present in this sector.

Your personal interests are always important and you never forget them, which doesn't mean that you are self-centered, but only that you behave according to what is in harmony with your deep nature!

Your 8th house is very highlighted: it is the most complex house of the Zodiac. It symbolizes above all passion and transformation, which often go hand in hand. Indeed, you have a tendency to experience everything to the bitter end, and you overstep propriety borders because you want to understand everything, even what is... forbidden. This house relates to complex spheres such as sexuality, possessions and dispossessions that don't depend on you (inheritances, donations, sudden financial losses), death too - not yours in particular, so, don't worry! - and understanding of hidden or occult things: here are the fields that affect you generally, because you are naturally interested in them or because life gets you involved in spite of yourself.

Your 7th house is one of your dominant houses: it symbolizes other people, marriages, associations,

contracts, and partnerships. Your personal achievement and maybe your problems - depending on the rest of your chart - are mainly influenced by your rapports with others, the area in which you tend to commit yourself a lot. You appreciate communication, and you give importance to others' opinions. Success requires the support of others, which seems obvious and natural to you. Your marriage generally contributes to your fulfilment.

## Your Style, Behaviour, and Peculiarities

What is commonly known as "sign" indicates the position of the Sun in the Zodiac. The Sun highlights all the characteristics of the sign he tenants. According to astrology traditional rules, these characteristics are all the more pure and exact when the Sun is strong in the sign, or when the sign is particularly highlighted within the chart. Here, we indicate the pure characteristics of the sign but you must bear in mind that they may only shed a light on a particular aspect of your personality. Indeed, the sole sign of the Sun, or of the Ascendant, can never describe an astrological chart because it depends on the degree of strength of the said sign in your chart.

Another important point must be underlined. Contrary to the Ascendant, which clearly describes your appearance, your vitality, your physical constitution, your spontaneous behaviour and the image you project, your Sun sign describes your inner self, which you may not completely be aware of, and which may emerge gradually as you mature: it is about your inner personality that you reveal only to the members of your entourage whom you trust. The Sun sign is likely to be the final form of your personality, once it has evolved in line with the energies of the other parts of your chart, the beginning of which is seen in the Ascendant, your external "bark".

The Ascendant is one of the major components of your natal chart. It is the zodiacal sign that rises in the East at the very moment of your birth. To calculate it, it is therefore necessary to know your exact time of birth.

It provides with a wealth of information on your personality. It is one of the key features that allows the analysis of several parts of you, such as your appearance, your character as it is initially perceived and your immediate behaviour. It describes the external aspect of your personality which you always display, but it also describes your physical constitution in the long-term, in other words, your health.

Please be aware that, in spite of the importance of the Ascendant, the accuracy of its description depends on how strongly highlighted it is in your natal chart. We use the entire set of astrological rules to assess the strength of the Ascendant. In most cases, the Ascendant is as revealing as your "sign", i.e., the sign where the Sun is posited at the time of birth.

## You were born under the sign of Leo and your Ascendant is in Sagittarius

Before broaching the details of the meaning of your Sun and your Ascendant, as a preamble, we offer a brief generic interpretation of their combination in your chart:

Megalomania! Your Leo Sun swears by the sense of honour and ideals of perfection, whereas your Sagittarius Ascendant rushes in intellectual and physical ventures so as to constantly move further. Suffice it to say that there is nothing petty or narrow in your personality, and that you do not understand that some people can content themselves with remaining with their limitations. Owing to your Sagittarius Ascendant, you project an image made of generosity and unfailing optimism. As for the concept of caution, you have no idea about what it may mean. In any case, one often takes you for a life-long student or a traveller with itchy feet. Nevertheless, whenever you are in familiar settings, your Leo Sun shines bright, and you are more reliable and loyal than what people think at first glance. Like Sagittarius, Leo is prone to euphoria and has a grandiose vision of the world, but it also needs stability



and security in order not to get lost in an endless flight from bad to worse. Your inner self is individualistic, and you consider that you are a magnanimous and radiating centre which offers an unfailing support to the people whom you keep in high esteem.

### **You were born with the Sun in Leo**

Psychologically speaking, your nature is powerful and self-assured. You are a leader whose strength and nobleness naturally arouse your entourage's respect and adherence and your legitimacy is unquestioned. Your sense of commandment, the honour your person constantly exudes, your prestige and your charisma is a whole which puts you into the spotlight wherever you go.

As you are born under this sign, you are proud, determined, wilful, loyal, solemn, generous, ambitious, courageous, heroic, full of vitality, creative, confident, seductive, happy, daring, proud, majestic, honest, magnanimous, charismatic, responsible, noble, brilliant, radiant, dramatic, affectionate, full of humour, demonstrative, swaggering and self-confident. You can also be domineering, conceited, touchy, authoritarian, stubborn, intolerant, self-centered, irascible, violent, and nonchalant.

In love, Sir, you are very demanding. You are a powerful and loyal lover. Your partner must be the most beautiful and the most brilliant person and she must make you feel that she admires you. In such a case, your generosity has no limit and you give your love without reservation, with nobleness, liberalities and luxury. You set up a stable and brilliant home where children have the essential part.

The main danger is that you value trust to the extent that you grant it generously but too hastily: if you happen to find out that your trust is misplaced, the whole world around you crumbles and the relationship is forever damaged. In this regard, you are cut-and-dried and you feel so hurt and humiliated that you seldom can forgive.

Another similar danger comes from the fact that your expectations are very high and it is very unlikely that real life offers such unconditional and lasting love: for this reason, it is not unusual that you never marry, all the more so because your self-centered character is not prone to self-questioning...

### **Your Ascendant is in Sagittarius**

Psychologically speaking, your nature is extroverted and independent, oriented towards expansion and sociability. You have the soul of a leader, energetic and active. Your charisma and your drive are fully integrated into the collective life. Indeed, as an action-oriented fire sign, you challenge yourself and you succeed in accomplishing the task straight away. Sagittarius is hard to follow because his spirit and his independent mind constantly prompt him to go further and higher.

As you are born under this sign, you are charismatic, fiery, energetic, likeable, benevolent, tidy, jovial, optimistic, extroverted, amusing, straightforward, demonstrative, charming, independent, adventurous, straightforward, bold, exuberant, freedom-loving. But you may also be irascible, selfish, authoritarian, inconsistent, unfaithful, brutal, unreliable, reckless, tactless or unpleasant.

In love, Sir, you are the mobile fire that consumes everything in your way. You are constantly in love, you are passionate and your energy and your extroversion create a love life that could fit a serialized novel: mobile and changing, you are not the man of a single woman, at least until you find the person who resists you and who arouses a love powerful enough to tame you.

Your need for freedom and independence is so strong that it is difficult for you to settle down. Many break-ups are caused by a feeling of smothering, when your love of the moment becomes too demanding. However, since you are also unstable, you often patch up as if nothing had happened and you will be forgiven: this paradox comes from your explosive mixture comprising ardour, energy, benevolence and fickleness.

Similarly to the way in which you run your business, you will settle down when you reach your forties or your fifties. You become a good husband and a good father, well acquainted with the rules of your society, full of contentment and joy. Your home will provide the room you need so that you do not feel imprisoned.

### The ruler of your chart is in Sagittarius

The ruler of the Ascendant, also referred to as the chart ruler, brings a few interesting nuances to the meanings provided by the Sun and the Ascendant. The sign in which the ruler of the Ascendant is posited fine-tunes the style of personality described by the Sun and the Ascendant. It may strengthen it if the sign is identical to either of them.

The ruler of your Ascendant is in the same sign as your Ascendant. This specific feature means that the characteristics previously delineated for your rising sign are strengthened.

### Aspects to your Ascendant

Several planets form an aspect with your Ascendant, Sean Penn. Therefore, in their specific way, they modify your behaviour and your personality, which do not take on the pure characteristics of your Sagittarius Ascendant only, but which are a blend of its characteristics with those of the said aspects.

#### ★★★★★ Mars opposite Ascendant, orb -6° 36'

Mars in opposition to your Ascendant is not strictly speaking a dissonance, Sean Penn, since at the same time, he is in conjunction with your Descendant, the angle facing the Ascendant. Therefore, this configuration should be interpreted as a conjunction. Mars on the Descendant indicates a good capacity for action with an above average energy which may be excessive. You tend to take action for, and according to other people rather than for your own interests - which is all to your credit. In some circumstances, your behaviour may come across as hot-tempered, even aggressive, whereas you intend to act smoothly for everyone's good. Generally speaking, with this dynamic configuration, you can but benefit from toning down your actions with more flexibility and gentleness. This is how the image you project can become more appreciated and more rewarding. Indeed, whilst you mean to do good, you may be a bit brutal!

#### ★★★★★ Jupiter conjunction Ascendant, orb 6° 59'

Jupiter, the planet of good luck, law, and benevolence, is in conjunction with your Ascendant, Sean Penn. This endows you with an undeniable natural vitality, a composed, honest, affable, not to say pleasant side. You tend to see the good aspects of things and to honour your commitments. This is what causes other people to often notice your reassuring and nice behaviour: quite an asset in life!

#### ★★★★★ Uranus trine Ascendant, orb -4° 5'

Uranus is in soft aspect with your Ascendant, Sean Penn. Although your behaviour is original, nonconformist, and free, it is not unpleasant. On the contrary, this facet of your personality is sometimes

considered by other people as endearing and unpredictable, in the good sense of the word. One never gets bored in your company because you are often found where you are not expected, whether regarding your ideas, your lifestyle or the way you react. You possess the charm independent and free persons are endowed with!

★★★★★ Mercury trine Ascendant, orb 4° 52'

You are endowed with quite good adaptation capacities, Sean Penn. Thanks to Mercury, your behaviour matches your intellectual concepts, or your style of communication, which is quite an effortless one.

★☆☆☆☆ Venus square Ascendant, orb 6° 21'

In certain circumstances, Sean Penn, you tend to adopt an attitude that is not necessarily in line with your real emotions. This discrepancy between your behaviour and your feelings, caused by Venus, may disconcert the people you mix with. Have self-confidence, don't be too pushy or... withdrawn, and forget your fears. Then, people can have a better perception of your personality, and you can harvest the fruits of your efforts.

★★★★★ Sun trine Ascendant, orb -8° 1'

Your will is fuelled by a strong energy, Sean Penn. It enables you to take quick decisions which totally match your personal ethics. Thanks to this good harmony between the Sun and your Ascendant, you feel rather good about yourself, and your inner self perfectly matches the image you are willing to show!

## Your Sensitivity

Affectivity and intuition are very developed, Sean Penn, and you are very sensitive to your environment. You “feel” atmospheres, moods and other people's emotions and when you capture negative influences, a feeling of ill-being immediately overwhelms you, all the more so because your lively imagination may destabilize you as it amplifies your receptiveness. Your nature is anxious and you tend to worry for your entourage. You strive to offer them a reassuring family atmosphere, the much needed comforting and warm sort of cocoon where you can laze around, at will. Because you care so much for your family, they may think that you are intrusive and that you try to rule their life through subtle affective blackmail. Trust them... and also learn to have more confidence in yourself!

You are dependent on your relationships for a large part, Sean Penn, and generally, you can open up only with people you are close to. Contacts are very important for you, however, you tend to listen to the one who spoke last. In fact you are easily influenced.

You will certainly find your dream wife and you will develop a close and intense relationship with her.

You are moody and impressionable. Your relationships with your audience are always put on a pedestal and you have a tendency to constantly change your personal image according to the persons you are dealing with and the reactions you get from them.

### ★★★★★ Moon trine Neptune, orb 0° 54'

This harmonious Moon-Neptune aspect indicates an exceptional receptivity. You are sensitive to ambiances and you can grasp what is at stake in any given situation. You can pick up things in the general atmosphere that the majority of people miss out. Your deep intuition allows you to feel the subtlest details, that « little nothing » which is the key to behavioural patterns. Inspiration is your guide and imagination accompanies your daily rhythms. Mysteries, psychology, esoterism, fantasy, the supernatural... one of these fields, at least, is of concern to you. You pay utmost attention to your inner life, to moments of tranquillity when you relax, when you allow your mind to wander at will. The danger is that you may seek refuge in the imaginary and that you shirk reality.

### ★★★★★ Moon sextile Pluto, orb -0° 12'

You are a riddle for people... and for yourself. This harmonious Moon-Pluto aspect arouses your desire to understand and to express elements hidden in your unconsciousness. You are interested in the occult, in laws that rule beings and things in the dark. You like to pull strings and to manipulate situations without people's knowledge in order to remain mysterious. You feel fine when you are not in the limelight, but you intervene in the dark, with subtlety. Your intimate behaviour reveals the distance that you strive to keep in order to protect your inner life. You gladly cultivate the angel of the bizarre, even in your life habits and in your daily rhythms.

### ★★★☆☆ Moon opposite Saturn, orb -6° 46'

When this aspect is not well integrated, there is no feeling of integration and security. You feel that you are not understood or even, that you are rejected. It is difficult for you to find inner peace and tranquillity. You lack the quietness and the primordial confidence that would allow you to lay back and to be carried away and pampered by life. This configuration indicates questionings and doubts regarding the unconditional affection that each individual longs for. You do not trust the world. You tend to dismiss social models, as well as your close friends' attachment and tenderness, probably because you need to test them and to get the feeling of being loved that you naturally lack. It would be a mistake not

to see that you desperately need affection. You are particularly vulnerable to relationship flaws and you strive to find the gestures of love that would allow you to let go and to be nurtured by life. In such a context, the sincerity you display, as you give or refuse your trust, is highly commendable.

★★★★★ Moon sextile Venus, orb 4° 43'

The harmonious Moon-Venus aspect is an element of intimate balance that favours sensual and affective fulfilment. The search of well being includes all kinds of emotions and feelings. You love, you enjoy life in simple ways and you arouse your entourage's affection. The persons belonging to your inner circle are also objects of desire and pleasure. Tenderness and love are probably one and only thing: you are moved by the gestures of affection provided to you and by the daily acts which strengthen two persons' mutual attachment. Whereas other people dread routine, in your case on the contrary, it increases your amorous feelings. You loathe all kinds of violence, particularly in your intimate life. The danger of this planetary configuration may be your constant changes of mood: whims are often on the agenda... and your will is quite weak. One last point: this aspect is frequently found in the charts of people with an aesthetic or artistic sensitivity.

★★★★★ Moon semi-square Uranus, orb 0° 55'

The Moon and Uranus intrinsically share little in common: they get along as well as fire and water! It is difficult for you to reconcile your desire for well being and intimacy with your destiny's dazzling passions and thunderbolts. You may feel that your intimate and family realm hampers your freedom. There is a potential for crises, explosions or splits. The desire for independence does not get on well with security concerns. There may be strong temptations endangering your very life foundations and you may embark upon a liberating and personal adventure. However, you fear rash decisions. Your need for security may temper your impulses and put a brake on your individualistic aspirations. To harmonize these tendencies within your intimate life, you must leave yourself enough room for personal expression or for an activity of your own. Otherwise, as days go by, built-up tensions may jeopardize the quiet course of your life.

## Your Affectivity

In your chart, the Sun is in Leo, and Venus, in Virgo. Leo is in love with love, anxious to shine and to be up to any promising situation. On the other hand, Virgo is more anxious to organize her realm than to expand her territory; she needs to control the elements at her disposal rather than to enlarge her sphere of activity. These contradictions are probably reflected in your affective behaviours: whereas your ambitions and your models bring about an offensive mind and you are absorbed in your intense thirst for domination, your desires and your natural tendencies are more balanced and reserved. Therefore, the image you project may conceal your true nature, which is sentimental, sensitive, modest and vulnerable. It is part of your charm but it is also your Achilles' heel: quid pro quos may come from the image you strive to give of yourself because, inevitably, it is distorted by your will to unreasonably show off. Your natural dignity (commendable as long as it is not exaggerate) is much to your credit, but it may also be the source of misunderstandings. Does the person who loves you know your affective aspirations? Mutual trust is one of the fundamental keys to your fulfilment. When passion and wisdom get along well, you become able to give of your best.

Sean Penn, inside yourself, feelings are strong and powerful. However, you never show them before weighing up and considering all the possible consequences of your words and your actions: fieriness and spontaneousness are toned down because you cannot help controlling yourself, probably due to your

modesty, your discretion or your shyness; you are frightened because you are so concerned with other people's opinion that you see passion, or expressing your feelings too quickly, as sources of danger. However, you are helpful, simple, and you do not fuss around. Reason prevails in your love life but your heart may flare up when the context is well organized and everyday life is cautiously handled with good sense, tidiness and cleanliness. Your sensitivity prompts you to avoid excesses and outbursts and this is how you think that you can achieve happiness without risk.

Sean Penn, the choice is yours: love encountered while travelling abroad, or just love for travels and focusing your feelings upon this ideal of evasion towards far-off lands? Or may be both. In any case, you often tend to fall in love, and even to get married, with a person of foreign origins. Exoticism and difference mysteriously appeal to you and there is little you can do against it. Early in life, you have a craving for space and for changes, particularly regarding your feelings: there is not a single chance that you are content with habits or that you refuse any new and exciting experience full of unusual and unknown features. You are always on the move and you feel so great when you finally find yourself in a ship at the other end of the world or somewhere in an airport, with all your senses stimulated, ready to be seduced by the unusual charm of the person whom you will meet and who will not resemble you. Your feelings are vast and generous, sometimes even sublimated and idealized because you so adamantly refuse any limitation. You have an undying thirst for higher knowledge that can only be gained in the field of spirituality or, in the literal sense, through roaming about remote lands, or also analogically, through interacting with culturally different people who have so much to teach you. Your feelings are coloured with the distinctive nobleness and long-term vision that characterize broad-minded persons who do not look at things with an ego-centered and simplistic glance. It is true that, seen from an airplane, the authenticity of all things important stands out finally with more acute sharpness...

★★★★★ Venus square Mars, orb 0° 14'

This Venus-Mars aspect indicates a sensitivity all on edge and an impulsive character. Emotions and heart impulses cause a marked tension. Life is an affective battlefield. Love is omnipresent but often fragile: impulsiveness reigns over the realm of feelings. The object of desire may become irresistible and implacable, or the sense of confrontations prevents affective tranquillity. However, the richness of your emotional responses is to be noted: you are more inclined than others to be guided by amorous fevers and you live intense passionate experiences. Your overwhelming impressionability must be contained. Romantic people seldom enjoy tranquillity!

★★★★★ Venus trine Saturn, orb 2° 02'

You favour deep feelings and a sincere affective life. In love, you are not content with shams or uncertain compromises. Your couple's relationship is based on mutual trust. You strive to build a lasting link, a true love that complies with your aspirations and your heart of hearts. This harmonious Venus-Saturn aspect indicates wisdom. Inexpressible truth is preferred to appearances. A love affair is an adventure, above all. Discovering the other one, step by step... any relationship takes a fundamental dimension right away. It is relevant to mention a little puff of romanticism and a passionate nature, although quite modest and reserved. You do not commit yourself thoughtlessly! This is a major asset for long lasting love. You are able to question your affective behaviour and to adjust to your significant other. You handle crises quite well and you overcome all the difficulties inherent to amorous rapports.

★★★★★ Venus conjunction Pluto, orb 4° 56'

You exercise exceptional clear-sightedness in love. Your passions are subtle, deep, although disconcerting and imperceptible to the outsider. You display no gullibility and you keep your distance.

This is part of your charm. You detect what is really at stake in your couple's relationship and in your sentimental attitude. You drive the boat of your sensitivity without falling victim to mirages and affective traps. The only danger is that you may be too calculating. As you try to totally control love and to constantly pull the strings, you may lose the ingenuity and innocence which are necessary to nurture a relationship. You give proofs of your love in a very personal way and you never hesitate to use paradoxes to preserve the authenticity of your relations. You can anticipate problems and prevent difficulties.

★★★★★ Venus sextile Neptune, orb -3° 49'

Your sentimental life unfolds like a strange dream. Love is too delicate to be tamed or controlled. You follow your heart impulses in an idyllic ambiance, far from reality's ordinary constraints, far from conventions and conformism. You exude a particular charm, discreet and subtle. But your affectivity may be disconcerting. You are very sensitive to marks of affection and tenderness, although you are aware that love cannot be bought or won. What is meant to be will be and it is impossible to know the hows and the whys behind a prevailing harmony. The obvious danger is that you may refuse to make any effort in such conditions. Living as a couple must feel natural and you do not need to objectively build the foundations of a relationship. You are an idealist and you dream of an affective paradise, which may be too good to be true...

★★★★★ Mercury semi-sextile Venus, orb -1° 29'

This aspect sensitizes you to games of seduction. You like to multiply romantic undertakings, you invent new reasons to seduce or to be seduced. Although your romantic life is not a model of stability, it is full of discoveries, varied emotions, both sensual and cerebral. You know how to earn your entourage's liking through your acute sensitivity. You play around with feelings, with relationships and with love... Mercury and Venus commonly share the capacity to sensitize to human topics. Your receptivity towards others is high. Your broad-mindedness goes hand in hand with your heart's generosity. You pay particular attention to the way people look at you and the effect you make when you meet or exchange with someone. Actually, you expect a lot from others: acknowledgement of your qualities, as well as esteem and consideration. You may also be touchy beyond what you may give to think. In many instances, relationship games may turn out to be more serious than expected.

## The Way You Take Action and Your Sexuality

Sean Penn, your mental activity is exuberant. Ideas are buzzing at high speed and you have the ability to think of several different things and to simultaneously process them. You are less interested in actions on the concrete or physical plane, because once you "see" a solution, its implementation is not that important any more since the crucial thing is that your mind remains bubbling with excitement. You are cerebral and curious and your sexuality is filled with fantasies, where pleasant ideas are mixed up with amplifying and enriching desires. Therefore, you are not simple but if your partner follows you, the stake is really worth it. Verbal jousting, the pleasure to debate and to discuss are continuous, with you. The only danger is to irritate people who may not have your swiftness or your sense of humour.

It is in the area of your work environment that you are most active and pugnacious, Sean Penn. Or in your daily life, if you do not work.

You are a hard-worker, completely dedicated to the service of others: being helpful and efficient is your battle horse. Indeed, it is so obvious! Ask the opinion of your colleagues or your entourage... Your

efficiency is not to be proved. You get things moving, you progress, you are very keen to improve yourself, and your boss can only rejoice that his staff contributes so actively.

The areas of health and pets are traditionally favoured by this planetary configuration. However, do check your Mars' aspects if you intend to be a tamer!

In any case, the daily work sphere is the area where you can deliver to the best of your abilities, in terms of action. The only reservation may be not to overdo.

★★★★★ Mars square Pluto, orb  $-4^{\circ} 41'$

There is a limit to your respect for laws and norms! Morals, conventions, social marks are of little value to you. With a touch of anarchy in the soul, you disregard conventions and you experience a sort of personal revolution. You prefer unconventional actions to dull conformism. To express your differences, you use a wide scope of possibilities that ranges from brewing revolt to ideological renunciation. Sometimes, you dismiss concrete facts that are nevertheless unavoidable. Hence, you undergo delusions and backlashes. You may also act rashly, to the detriment of your ideals. It is important that you control your actions and that you balance the respect for constraints with your personal demands and inner motivations.

★★★★★ Mars quintile Uranus, orb  $-0^{\circ} 33'$

This harmonious Mars-Uranus aspect indicates an unshakable determination and the will to further your ideas through drastic, sudden, sometimes dramatic actions. You bend the string of your bow before taking action and you hit at the right time. The secret of your feats? An excellent command of your blitz actions. You concoct your plans in the dark, and then you move to an efficient and quick execution step that is often dazzling. You do not have the temperament of a loser. When you face an ordeal, you focus your entire energy and will on your unique aim: victory over any obstacle. This planetary configuration may lead to dangerous, even heroic actions. The danger is that you may over-estimate your strength or your chances for success.

★★★★★ Mars inconjunction Saturn, orb  $-2^{\circ} 17'$

Why should you take action? And how? The surrounding world is not to be trusted. Past events have taught you to question simple situations and to intervene after thorough consideration. You are vulnerable to the traps of life, to confrontations and struggles. You may complicate your behaviour at will, often missing your target due to your self-censoring. Your interventions may lack spontaneity. You must overcome your doubts and acquire the certainty that you are able to handle realities and facts. If you make that effort, you can understand that there are many ways to make life simpler for yourself.

## Your Intellect and Your Communication Style

Your intellectual and nervous energy is considerable, Sean Penn, with good concentration abilities and a strong determination. You have plenty of planning and organization skills and enthusiasm. Your helpfulness is deep and you never hesitate to solve other people's problems. You are thought of as a reliable person and you enjoy it very much. You believe in your own capacities and you tend to speak with a dramatic pomposity because you want to attract attention. People who do not share your opinion are in trouble! Your determination is strongest and you may show stubbornness and inflexibility because you do not easily accept it when your ideas or your actions are criticized. Some people believe that you assert yourself in an authoritarian and condescending way, but you are not aware of it and therefore, you



keep on thinking that you are right.

You need to understand, to explore the unknown, to shed light on mysteries and to immerse yourself into the hidden fields of the unconscious or the afterlife, actually, into whatever escapes you, Sean Penn. You are not content with what seems obvious because you are on Earth to evolve and not to stagnate or remain in a mindless state and a lack of understanding.

Interestingly enough, astrology connects the spheres of death, after-life and mysteries with the spheres of other people's possessions, investments, inheritances etc. This analogy probably comes from the fact that in those two fields, everything remains inaccessible right away. It might be the reason why such mysterious topics are so attractive to you.

Your investigative mind enables you to easily express your feelings and to explain the inner mechanisms of your whole being, almost as if your own self was a specimen to study, without modesty and with the only motivation to go as far and as deeply as possible.

#### ★★★★★ Mercury sextile Mars, orb 1° 43'

The harmonic Mercury-Mars aspect is the signature of a quick wit and an energetic character. You take decisions rapidly and you implement them straight away. You never accept stiff situations. You need to design, to take action, to fight to express your acute sense of relation: the world, the people, everything is of concern to you... You need to be involved in relationships and in dialogues. Your sharp retorts earn you a reputation of straightforwardness. On the relations' area, your quick wit and your mobility are greatly appreciated. You find the allies and partners you need at the right time. An art of resourcefulness that is precious...

#### ★★★☆☆ Mercury square Neptune, orb -5° 18'

With this Mercury-Neptune dissonance, relations may be distorted by the mirages of sensitivity. You have to make an effort to keep your objectivity. If this aspect is not well integrated, it may harm your good evaluation of human stakes. Your intimate beliefs may limit the dialogue, as if a very specific sensitivity prevented true communication. It may be difficult to find the right wording to express fragile and ineffable experiences. Imagination in power is not easy to share and the poetry of your speeches may be beyond your audience's understanding!

#### ★★★☆☆ Mercury inconjunction Saturn, orb 0° 33'

This Mercury-Saturn dissonance does not allow for simple and spontaneous relations. Your vision of the world is complex. You are sensitive to the fragileness of human relations and you are doubtful of transparent situations. You need to look for hypothetical calculations and you suspect that unclear reasons are underlying beneath dialogues and encounters. Your sociability is limited. You are a loner because you dread relationships and you trust very few people among your close friends. You ask yourself more questions than you can find answers! Therefore, you are on the look out, troubled by the unknown. Everything is subjected to your questionings. It seems difficult to find certainties and to be satisfied with commonplaces that cannot soothe your doubting mind. The forte of this aspect is that it brings about undisputable capacities for discernment. Although your lucidity may hinder your relations, it also grants a lasting protection against gullibility. By nature, you belong to the category of the sceptics!

★★★★★ Mercury conjunction Uranus, orb 9° 42'

Your state of mind is innovative and turns the surrounding world into a constantly moving field of experiences. You ask relevant questions ... and you answer them. Although you are flexible when you ought to, your principles and your beliefs are unwavering. It seems difficult to catch you off your guard. You multiply observations, relationships, contacts and you never lose face: actually, your mobility hides an unshakable determination and a deep lucidity. In a split second, you are able to catch the useful information or the enriching relationship. The original and fanciful steps you take exclude monotony. Your approach to life is amazing!

## Your Goals, Motivations, Career, and Destiny

### Your Sun is posited in the 8th House

One thing is certain, Sean Penn, your motivations cannot be easily figured out because this configuration is quite special and complex. Everything pertaining to the realm of emotions is deepened. You have a tendency to infuse passion in nearly everything in life and it will translate differently, according to your temperament and other characteristics of your chart.

Several common elements are noted however. There is a predisposition for essential matters connected to life and death and to great mysteries that go beyond daily life. You need to understand, to drill and to always delve deeper. You are inhabited by some sort of desire for transcendence, maybe because you feel everything with deep intensity: therefore, you are more vulnerable because events hit you full in the face and you unconsciously understand that, if you manage to decipher how and why things appear, you will become tougher. But there is another reason to it. Your curiosity is continuously on the alert and you are amazed by apparently insignificant facts that stir up the chain of causes and effects and lead you towards the more essential matters that are knocking at the door of your soul.

Your concerns and your inclination may take you into such various fields as psychoanalysis, amassing knowledge in mystics, religion, occultism or spirituality (desire for transcendence and immediate access to an upstream reality). What is hidden mesmerizes you and you spend lots of time polishing your lucidity, as if progressing ahead and evolving further were the materialized forms of your life's challenge.

On a more terrestrial plane, here are the areas that are particularly important to you: sexuality, probably because of its transcendence and its hidden nature; death, either because you experienced a loss with a big impact on your evolution or on your destiny, or only because you are interested in this topic; finance, investments, inheritances, speculations, in other words, any financial area other than those of money earned by yourself, expenses, and the way you use your patrimony and your resources.

Your entire being strives towards assertion as you win over ordeals or over life hardships: nothing stimulates you better, nothing makes you evolve more than these critical periods of life when, on the brink of the abyss, you feel with maximal intensity all the choices that are offered to you. During such periods, you always manage to give of your best, you transform yourself and you come out enriched and more lucid: crisis and metamorphosis. This pattern suits you best. You want to move fast, always faster and further, because you intensely understand that daily reality is important only through its authentic and hidden contents. To discover the reality, your only tool is self-awareness development. However, do not take too many risks and do not systematically enter into the eye of the storm as you may be badly and

repeatedly shaken up.

You lost your father quite early, literally or figuratively (sometimes, you find him again after an ordeal), although, paradoxically, he played a major role. If the theory is borne out, it is only an additional step towards sublimation and the overcoming of certain ordeals towards the road to wisdom. You, a mystic? Yes, in your own way, of course!

### **The ruler of your chart is in the 1st House**

The ruler of the Ascendant, also referred to as the chart ruler as explained in a previous chapter, is also posited in one of the twelve Houses of the chart. Just like the Sun in his House, the ruler of the Ascendant provides certain abilities, or it makes you appreciate more keenly certain areas of life.

The ruler of your chart is in the 1st House, Sean Penn. It strengthens your self-confidence and enhances your charisma as well as your magnetism. You do not shirk from taking personal decisions, and you forge ahead fearlessly. This configuration provides strength rather than interest in a specific field.

### **Aspects influencing your ambitions**

Regarding your destiny or your career, the following aspects of your natal chart allow to fine-tune what has just been said above:

★★★★★ Sun conjunction Uranus, orb 3° 19'

This aspect reinforces the determination as well as the will to further your original, sometimes revolutionary, ideas and designs. Your capacity of innovation is important for your image. You have the soul of a leader. You display a forceful and synthesizing mind. You may tend to oversimplify or to schematize situations. In most cases, you know where you are heading to and how to reach your goals. Your determination is two-edged... not everybody will appreciate your contrasted standpoints. It is yes or no, black or white! This planetary configuration indicates certainties. When it comes to acting according to your inner motivations and to respecting your models, you can show an unusual willpower and sweep aside all obstacles lying on your path.

★★★★★ Sun trine Jupiter, orb -1° 1'

This harmonious Sun-Jupiter aspect indicates an optimistic background that usually wins the entourage's adherence. It also suggests ambition and generosity and favours social integration and success. The desire to earn general consideration prompts you to display energy, joviality and benevolence. However, opportunism may be the other side of the coin. As you strive to win everyone's esteem, you may fall into disrepute. It is important that you remain clear-sighted so as to persistently pursue your long-term aims without believing that you should always « grab each and every opportunity ». However, this aspect remains an element of success because it allows you to adjust your objectives to the context, to whatever the situation offers or, on the contrary, to force your way through events and to achieve your ideals.

★★★★★ Moon square Midheaven, orb -3° 16'

There is a dissonance between the Moon and your Midheaven, Sean Penn. It may indicate a discrepancy between your sensitivity and the goals you set for yourself in life, although this dissonance seldom plays out dramatically. You may feel that your emotions sometimes catch you off your guard in society, and that the level of your popularity is not too satisfactory, without your knowing the reasons why. In some

cases, females may thwart your social ascent.

★★★★★ Sun quintile Neptune, orb -0° 21'

This harmonious Sun-Neptune aspect indicates a highly developed intuition and clear-sightedness and sometimes, a sixth sense. Mental images or information drawn from the unconsciousness impress your mind. What was only a muddled feeling turns into certainty and deep conviction. You do not necessarily need to justify your attitudes: you take a decision because you feel that you have to do so, although you may not control the underlying logics. The danger is that you may follow fanciful or adventurous roads. Beliefs you cannot explain may prove wrong or over-optimistic. However, your intuition is seldom misleading. One last comment: there is often a keen curiosity for the « bizarre » and the paranormal with this planetary aspect.

★★★★★ Mars trine Midheaven, orb -7° 45'

Your energy serves your professional goals and your social ascent in general, Sean Penn. This beneficial aspect of Mars to your Midheaven endows you with strong dynamism, and it rewards your sustained and efficient efforts. You enjoy taking action, and your results are gratifying most of the time.

★★★★★ Sun sesqui-quadrate Saturn, orb 2° 3'

The Sun-Saturn dissonance indicates frequent questionings. For the sake of lucidity, you are doubtful of everything that makes up your life environment, as well as of your entourage and of yourself. Past events are the cause of your distrust. Your motivations are not based on conventions or established norms. They may produce a feeling of loneliness or of revolt. However, you withstand difficult situations. You are pre-adapted to changes of direction and you are able to question the very basis of your life. Doubts are often overwhelming and hamper your steps. It is important that you accept facts with more simplicity and that you take life as it comes, without constantly questioning the validity of this or that option. It does not imply that you must lose the lucidity that is your characteristic. It only means that you have to build the self-confidence that you are lacking.

★★★★★ Sun conjunction Pluto, orb 10° 31'

This harmonious Sun-Pluto aspect indicates an exemplary clear-sighted mind. Without destabilizing your appearances or your personality mask, Pluto makes you aware of your subjective and questionable character, as well as of your manner. You never take yourself completely seriously. You have a good grasp of human nature's complex games, without gullibility, without excessive simplification. Because you can perceive hidden elements underlying any situation better than anyone else, you are acknowledged as perspicacious. This aspect allows you to distance yourself from difficult circumstances and to remain impassive when you must overcome pitfalls.

## Your Assets and Your Part of Joviality

This is the best possible position for the planet of Greater Fortune in your chart, Sean Penn! It offers a lot of human warmth (or it counterbalances introversion, if such propensity is indicated elsewhere in your chart), the taste for travels, optimism, vitality and an enterprising mind. You are mobile and you have a large vision. Wisdom starts with the ability to consider life from a different angle and to put all things into perspective!

Sean Penn, Nature gives you a nudge in the right direction and endows you with enthusiasm and generosity, contributing to your charm and dynamism. You are attractive, and you hold sway over groups. Your physical appearance is that of a jovial and charismatic person.

The planet Jupiter symbolizes expansion, broadness and generosity. Jupiter is associated with the functions of synthesis, enthusiasm and optimism. In your natal chart, his house position is more important than his sign position because, like Saturn, Uranus, Neptune and Pluto, he is a slow planet. Many people born in the same period have Jupiter in the same sign. This is the reason why the sign occupied here is less meaningful than when it is occupied by the so-called fast planets, i.e. the Sun, the Moon, Mercury, Venus and Mars. Therefore, some caution is to be exercised as you read what follows.

Jupiter in Sagittarius is very popular because he rules this sign, and, according to the Tradition, he is most potent and at his best. He endows you with all his natural qualities: enthusiasm, sense of humour, boldness, warmth, optimism, leadership, synthesizing mind, but also, propensity for travels or, symbolically, disposition for higher knowledge and matters such as spirituality, philosophy, politics or religion.

## Your Serious Side

Precision, slow progress, huge concentration capacity, and exceptional but... hidden ambition are your features. With time, you acquire the ineffable certainty that your values will be acknowledged and that your organizational abilities as well as your long-term aims are the keys to your success.

Solemnity, seriousness and discipline are your keywords, Sean Penn. It is difficult for you to relax, and it is most likely that at the beginning of your life, you are shy, quite introspective, and distant. You may be worried even though you have no reasons to do so. Your doubts may be overwhelming to the extent that they affect your vitality.

As time goes by, thanks to your strong will, your serious side becomes an asset for your success. You learn spontaneity, risk-taking, and lightness, and you are less concerned with the image you project because, in your heart of hearts, there already are hindsight, solemnity, and some sort of wisdom!

The planet Saturn symbolizes contraction, effort, time, limitation and concentration. Saturn eliminates anything that is not authentic, sooner or later. It is impossible to cheat him as he gives an irresistible desire to form a coherent whole with oneself, in responsible and wise ways. He is the great purifier. He represents our limitations but also our truth. In your natal chart, the house position where Saturn is posited is more important than his sign position because, like Jupiter, Uranus, Neptune and Pluto, he is a slow planet. Many people born in the same period have Saturn in the same sign. This is the reason why the sign occupied here is less meaningful than when it is occupied by the so-called fast planets, i.e. the Sun, the Moon, Mercury, Venus and Mars. Therefore, some caution is to be exercised as you read what follows.

Saturn in Capricorn is in his own sign, and according to the Tradition, he is most potent and at his best: he increases your toughness, your seriousness, and above all, your long-term management capacities. You are persevering, resistant, hard-working, ambitious and you are aware of the fact that time is on your side. Your reputation is that of a sober and stern person but you are respected and acknowledged for your wisdom and your authenticity.

## **A Few Special Points**

### **Your Uniqueness and Your Utopias**

Unexpected events and surprises often occur in quite special areas: finance connected to investments, to inheritances and, more generally, to external possessions or losses (taxes, stock exchange, other people's money), to the fields of occultism and death and, more symbolically, to sexuality.

In general, in one of these fields, you are likely to experience one or several reversals of situation (positive or not), on the material plane but also, as a consequence, in your approach to life and the way you transform your personality in depth.

In any case, you are predisposed to risk-taking, as if some inner force prompted you to create maximal psychological tension, or to challenge yourself in order to know yourself better, or to explore the unknown in a constantly deepening manner.

### **Your Inspiration and Your Illusions**

As soon as you are within a group or you are involved in a project, your attitude becomes quite peculiar. Instead of asserting yourself and differentiating yourself, you strive to completely merge into the group because you do not intend to impress or to be set apart. The danger may be that you lose your identity or that you are abused and deceived by the group, or by one of your friends who is a group member.

In general, because of your feelings and your strong intuition, you have a good capacity to become integrated and to slowly gain self-confidence in group settings.

The same holds true for your friendship life. You tend to fuse, to be totally devoted, and to adjust with flexibility to your friends' personality. However, it is hard for you to assert yourself, and you may wrongly be considered as lacking in conviction, although not a weak person.

### **Your Passion and Your Authority**

Your capacity for concentration and your mental power are your major assets for the study of higher knowledge and ideological concepts. You also tend to get away from your usual geographical cocoon! You are inhabited by passion and persistence, and you do not resist the temptation to explore foreign lands or to thoroughly explore ideas.

Besides, once you enter those attractive fields, it is most likely that you become deeply transformed and shattered. Nothing is any more what it used to be, and this is precisely what your unconscious suspected when you were magnetically drawn towards these remote realms.

Sometimes, these transformations may deeply hurt you, but isn't it the only way to change and evolve? Otherwise, all the benefits are yours: adrenaline increased by the passion and creativity of the moment, along with the happiness to be spiritually enriched, later on.

## Your Isolated Planets

In general, the ten planets of the chart are connected to other planets by major or minor astrological aspects. It is owing to those ties that the planets' energies can manifest in the chart owner's personality and play out within safeguards according to a specific tonality.

It seldom happens that in a natal chart, a planet is totally disconnected from the nine other planets.

Astrologers have observed that when such a case occurs, the person feels the energy of the unaspected planet in quite a singular way, very jerky and powerful at the same time. Thus, for instance, the famed astrologer Jean-Baptiste Morin de Villefranche wrote that "an unaspected planet heralds that something strange or extraordinary will take place regarding the meanings of the house in which the said planet is posited" (source : l'astrologie selon Morin).

Rules for detecting an unaspected planet: among all the testimonies that we have reviewed to this day, based on our experience, we tend to agree with American astrologer Janis Huntley who accepts seven aspects, which involve the zodiacal twelve sections of 30 degrees. The aspects to be considered are the conjunction (0 degree, cooperation or tension), the semi-sextile (30 degrees), the sextile and the trine (60 and 120 degrees respectively, aspects of cooperation), the square and the opposition (90 and 180 degrees respectively, tensed aspects), and the quincunx (150 degrees, slightly tensed). In this detection, the chart's angles are not taken into account.

In any case, it is important to remember that an isolated planet clearly expresses its influence when it is a personal planet. Thus, when the Sun, the Moon, Mercury, Venus, or Mars is isolated, it is certain that the effects described by Jean-Baptiste Morin de Villefranche will become manifest. As for Jupiter, Saturn, Uranus, Neptune, and Pluto, one must be cautious because the volume of cases documented is not yet large enough.

Your chart has no isolated planet, and this particular case does not apply to you.

## Annex 1: Your Minor Dominants

The five following dominants are less significant than those described at the beginning of your report. They may not be strongly felt. In some cases, they add several minor details to the analysis of your character, but they are rather for curiosity purposes. It is not necessary to take them into account when you first read your portrait.

### Your Planetary Repartitions: Northern, Southern, Eastern and Western Hemispheres

The axis linking the 1st house's cuspid (the Ascendant) to the 7th house's cuspid - the Descendant - divides the zodiac into two bowls, a superior bowl, in the South, and an inferior bowl in the North. Quoting an expression by the famous American astrologer Rudhyar, the Southern part and the Northern part correspond to two functions: "being" and "doing". Other concepts are also associated with this North and South distribution, such as introversion - Northern hemisphere - and extraversion - Southern hemisphere - being or appearances, inner life or external life, reflection or action, dreaming one's life or living one's dreams, the abstract or the concrete, backstage or limelight.

This is not about determination but about personal inclination: thus, some people will be thrown into public life despite a prominent Northern hemisphere. If this happens, however, it will not be due to their will, their taste or their deep nature. Conversely, a prominent Southern hemisphere will not bring about a famous destiny to its owner, even if he tends to turn the spotlight on himself, or if he looks for a more active life. It is a matter of deep nature and natural inclination. Of course, none of the typologies is "superior" to another.

In your birth chart, Sean Penn, the ten main planets are distributed as follows:

### Your Northern and Southern Hemispheres



Sean Penn, the predominance of planets in the Southern hemisphere prompts you to take action, to draw attention on yourself, and to make your actions and what you have in mind visible to everyone. Sometimes, without giving a single thought to, and to the detriment of, a richer inner life and a deeper and wiser reflection. Action and communication are inevitable in your opinion, and you tend to think that the only thing that matters is what is seen! This is not always true, and it is up to you to progress through the development of inner qualities such as meditation, solitude and imagination so as to become stronger.



The birth chart is divided into two other parts, Eastern and Western, by the axis linking the Midheaven to the Imum Coeli.

The Eastern part, on the Ascendant side, shows the person's ego, will, magnetism, and vitality, whereas the Western part, on the Descendant side, symbolizes other people, communication, relationships and their influence, as well as flexibility and adaptability.

Sean Penn, here is the planetary repartition in your Eastern and your Western hemispheres:

### Your Eastern and Western Hemisphere:



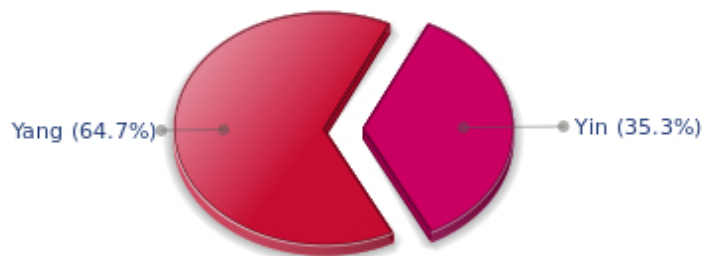
The predominance of planets in the Western hemisphere of your chart means that you are quite flexible, capable of empathy, convivial and communicative. An excellent factor for many professional activities or for your social or sentimental life for example.

A definite asset... provided that you are not at the centre of the decisions you must take in your life: you may be tempted to listen to the last person who spoke, and your flexibility won't always get you out of the tight spot. You are therefore advised to learn to decide alone and to cope with the consequences of your actions with courage and without regrets. This attitude will allow you to combine flexibility and action, adaptability and absence of hesitation.

### Your Yin and Yang Polarity

The twelve signs are divided into two polarities, called active or passive, or sometimes masculine and feminine, positive and negative, Yang and Yin. This classification corresponds to two quite distinct tonalities, the first one bringing extraversion, action, self-confidence and dynamism, the second one, introversion, reactivity, reflection and caution. None is superior to the other, each group has its own assets and shortcomings. Odd signs - Aries, Gemini, Leo, Libra, Sagittarius and Aquarius - belong to the first group, whereas even signs - Taurus, Cancer, Virgo, Scorpio, Capricorn and Pisces - belong to the second group.

## Your Yin and Yang Polarity



According to the disposition and qualities of your planets and angles, you are rather influenced by Yang energy, the active polarity, Sean Penn: more concerned about actions than reflection, you sometimes rush without standing back and without the deepness that is needed. However, your spontaneity prompts you to take fresh starts, even after repeated failures caused by your rashness.

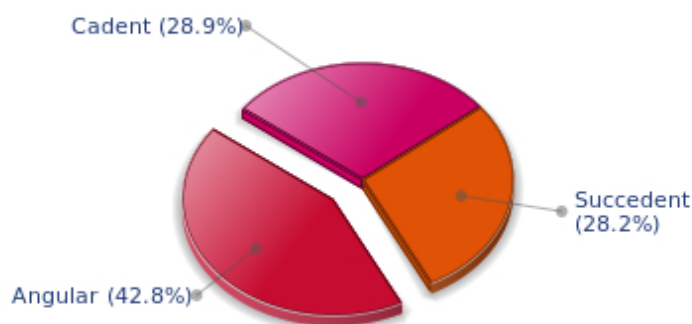
### Your Houses' Accentuations

Houses are split up into three groups: angular, succedent and cadent.

The first ones are the most important ones, the most "noticeable" and energetic houses. They are the 1st, 4th, 7th and 10th houses. Their cuspides correspond to four famous angles: Ascendant for the 1st house, Imum Coeli for the 4th house, Descendant, opposite the Ascendant, for the 7th house and Midheaven for the 10th house, opposite the Imum Coeli.

Planets are evaluated according to a whole set of criteria that includes comprehensive Western astrology rules. At their turn, planets emphasize specific types of houses, signs, repartitions etc., as previously explained.

## Your Houses' Accentuations



Your angular houses, namely, the 1st, 4th, 7th and 10th houses, are very emphasized in your chart, Sean

Penn: according to the Tradition, they are the strongest and most dynamic houses. Should the rest of your chart concur, angular houses suggest that you are an enterprising, energetic and assertive man. Indeed, angular houses are said to generate impulsions and to give a powerful and domineering personality.

Unusual fates are often linked to a predominance of angular houses, but this is only a partial indication...

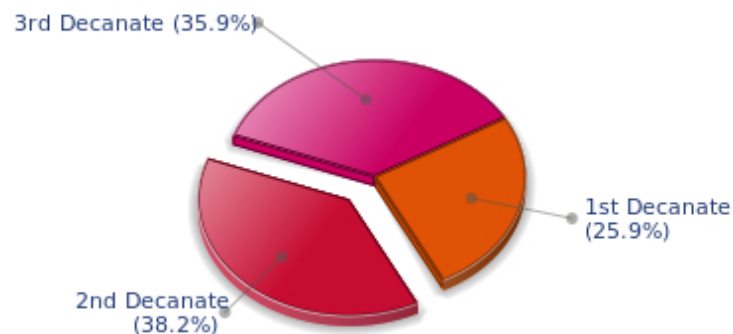
### Your Esoteric Decanates

Each sign contains 30 degrees and can be divided into three equal parts: the decanates. The Tradition indicates that specific meanings can be associated to each of the three decanates. Their sphere of activity is usually limited to the Sun sign, however, it is even more interesting to observe the distribution of all the planets in the chart to get an idea of the respective importance of the three decanates, which can complement the description of the personality.

These meanings must be considered with the greatest caution. Indeed, they are minor characteristics that can only underline other outstanding traits of character.

Traditionally, the first decanate highlights the characteristics of the sign where a planet is located. The two other decanates correspond to sub-dominant planets, depending on the nature of each sign. This system leads to a multiplication of meanings and it is impossible to have a clear understanding: here, we prefer to give only the meaning of one decanate in comparison with the other two, within the birth chart as a whole. Again, the greatest caution is needed with regard to this minor indication as it is not always reliable: it is not essential that you read these texts in the beginning. You can get back to them later on, once you have read more important interpretations

### Your Esoteric Decanates



The second decanate, which means the part between 10° and 20° of any zodiacal sign, prevails in your natal chart, Sean Penn: these 10 zodiacal degrees emphasize logical thought and mental values. Therefore, you may be drawn to some kind of scientific activities, research, writing or any sort of expression where you have to... think a lot.

## Annex 2: Karmic Study

The karmic theme is a good complement to the psychological portrait, or natal chart. This analysis is based on the positions of the Lunar Nodes, the Black Moon and the Part of Fortune: they are also called fictitious points and describe the spiritual purpose of your destiny. Because there is in all of us an experience and a quest, our life is an evolutionary journey... provided that we head towards the right direction, of course! Indian astrologers highly prize the Nodes axis (North Node and South Node). It is the Ariadne's thread that we are invited to follow. The Black Moon indicates the sector where we are most likely to transform or to transcend, whereas the Part of Fortune points out the area where we can easily express our specificity.

### The Lunar Nodes: a spiritual path

Lunar Nodes have their roots in the Indian tradition and they are based on a simple concept: each of us have a mission of their own, here on earth, a destiny, a course. According to the Indian philosophy, life is a school: the nodal axis describes our past experiences (South Node, our karma, our spiritual inheritance or our previous lives), and our aims on earth (North Node, our Dharma, the purpose of our current incarnation). This is the reason why the study of the lunar nodes is called "Karmic astrology". Here, we shall not step into hypothetical past lives. Wherever our current trends may come from, all that really matters is that we become aware of the purpose of our life, its finality and our dharma. We are likely to understand our life purpose around the age of 37, when the Lunar Nodes return to their natal position.

A part of you is bohemian: you may shirk realities (at least during the first years of adulthood) and you keep your distance from the constraints of this world! However, life reminds you of them... As years go by, you show more pragmatism. Of course, you must keep your assets: a sharp intuition of people and things, a profitable detachment that allows you to cope with daily petty things. But you must also control the vagaries of life that may fall into the bad side of a "bohemian life" if you are not careful. The consequences may be setbacks and delusions that will cease only when you become aware of realities. As you progress, you may be a therapist who heals the body (a medical occupation)... or the soul because you are altruistic and you know how to listen.

Your destiny hinges on spiritual values. Early in life, you developed relationship abilities and you showed a healthy curious mind. You are insatiable when it comes to exchanging new concepts but you limit your horizon line to tangible and useful facts. As time goes by, you feel the desire to leap further and to discover new territories or different philosophies. You may have a growing interest in metaphysics or in religions, or you may travel, so as to keep up with your desire for evolution. Never mind! What is essential is that you never stagnate and that the vagaries of life do not take precedence over your thinking process or your spiritual growth. You dream of getting rid of everyday constraints and of reaching another dimension of life pertaining to large spaces and to ideals. You need to live intensely, to discover again and again. You long for a better world? The danger is that you may get trapped in illusions and utopias. But life would be so dull without an ideal!

### Lilith or the Dark Moon

The Black Moon is the spark of refusal and distance that is dormant in all of us. Depending on the sign where she is found in your chart, she highlights the desire to transform and to sublimate a part of your life. The Black Moon is unfathomable and mysterious. She gives a different dimension to the sector she touches. Her manifestations are subtle; nonetheless, she is powerful, implacable, demanding to the extreme... The Black Moon is also called Lilith. She is the inner flame of your heroism and

insubordination.

You pay special attention to your familiar and intimate realm: an importance and a demand, too. You are in search of a setting into which you can totally merge. You do not appreciate half-measures in the family: you want the perfect osmosis or nothing at all! In the long run, this will melt your attitudes into your entourage's may become the cornerstone for a near-to ideal union. However, the danger is that you may shut out solicitations, inevitably disturbing, which are not from your clan.

You decidedly assert yourself as a person made of desires, love and the absolute. If this configuration is not well controlled enough, your thirst for timeless relationships may hamper simple, natural and obvious affairs. You may reject persons whose attitudes do not perfectly live up to your expectations. However, as you keep on looking for your muse, it is very likely that you will find the person to whom fate has relentlessly tied you.

### **The Part of Fortune in House**

The Part of Fortune is a very ancient fictitious point that depends on the lunar phase at the time of birth. The astrological house tenanted is particularly strengthened. In your chart, the Part of Fortune is in the 10th house: you give top priority to your social status and to the level of your "rank". You are very ambitious and you have every chance to achieve social and professional successes. You identify yourself with the part you are to play and with the expectations of your environment. Therefore, you can fully blossom through the adherence to the collective pattern that you are the first one to understand and that you personify. In other words, deep down, you are what your entourage admires and respects: you have a job that is "under the spotlight" and you fulfil your responsibilities as if you were in charge of a "mission".

### **Retrograde Planets**

The karmic tradition insists on the issues related to the so-called retrograde planets. They are considered to be the inheritance of a past that was not well experienced, a sort of unfinished business. The interpretations of the retrogradation may seem negative or excessive to you. However, you may relate to a scenario that you have often and repeatedly experienced... as if you underwent several setbacks that all have the same cause. Until the day you become aware of it and you can free yourself from it! Through the slow integration of these planetary energies, you will be able to overcome your difficulties and to pay your karmic debt. Actually, each retrograde planet highlights an opportunity for evolution. Nothing can be achieved without the will to grow spiritually and to defeat your own demons.

With Jupiter retrograding on the day of your birth, the lesson is about grasping the opportunities that are offered to all of us but that some people take advantage of, while others don't. Persons who quickly adjust to circumstances are more likely to achieve their ambitions than those who need to be encouraged to take action. During your childhood, you may not have efficiently responded to life's concrete enticements, leaving other "luckier" people to achieve what you were dreaming of. You preferred to enjoy yourself, here and now, rather than to look for new paths of development or exploration. It is possible that you were not optimistic enough. Enterprising minds were alien to you... Later, you find out that, indeed, you give little importance to the credit of the frenzied expansion praised by the modern world. Your path is not oriented towards personal prestige. With subtlety, you integrate non-material values and you accept well the fact that you missed past opportunities.

The karma associated with Saturn may border on self-censorship: during your childhood, particularly,

you were doubtful of your abilities and your talents. You had a propensity to put yourself in a no-win situation and to under-estimate yourself. Obstacles abound: taboos and prohibitions of all kind slow down your evolution. Little by little, you learn to re-evaluate your possibilities and to gain more self-confidence. Your personal rigour then turns out to be constructive: you are not destabilized by life ordeals and you practice a self-discipline that favours steady evolution. Although your path may be steep, it is nonetheless safe.

**N.B:** modern astrology attaches less and less importance to the principles of retrograding planets.

## Conclusion

A few remarks are needed here in order to allow you to fully take advantage of your astrological portrait: firstly, do not forget that a birth chart is also a photograph of the sky at birth and a structure that not only contains the personality's characteristics, but also its potential evolution.

We all know that, in real life, people begin to know themselves when they are in their forties, or even later. Likewise, several traits of character in a portrait may seem surprising: in most cases, it means that such features are not yet developed.

Some personalities reveal themselves late in life, whereas others are more precocious. It must be remembered that psychological structures are in a state of continuous evolution because they are influenced by unfolding events and gradual maturity. We can never underline strongly enough the "mobile" nature of the personality, throughout a lifetime.

On the other hand, it is difficult to discriminate what is "already present" at this moment in your life when you are reading your chart's interpretation, from what will appear later in the logic of your evolution: you must sort out all the pieces of information provided and, in most cases, you will see that your astrological portrait is helpful for your endeavours to know yourself better.

Finally, several readings of an astrological portrait are usually necessary in order to absorb all its different meanings and to evaluate the relevance of each character trait.

In any case, better self-knowledge obviously contributes to faster personal blossoming, and it is undoubtedly one of astrology's major roles: contributing to know oneself better, in order to improve more rapidly, to deal with one's weaknesses and to avoid its drawbacks, and to take advantage of one's assets as efficiently as possible.

---