





Rafael Correa's Astrological Portrait



Introduction	2
Your Planets, Houses, Aspects, and Natal Chart	4
Preamble	7
Your Planetary Repartitions	8
Your Dominant Modes and Elements	9
Your Dominants: Planets, Signs and Houses	10
Your Style, Behaviour, and Peculiarities	15
Your Sensitivity	19
Your Affectivity	20
The Way You Take Action and Your Sexuality	22
Your Intellect and Your Communication Style	23
Your Goals, Motivations, Career, and Destiny	24
Your Assets and Your Part of Joviality	27
Your Serious Side	27
A Few Special Points	28
Your Isolated Planets	29
Annex 1: Your Minor Dominants	31
Annex 2: Karmic Study	35
Conclusion	38



Rafael Correa's Astrological Portrait

Introduction

To fully benefit from this portrait, we suggest that you read its introduction and its preamble carefully, and then that to take the time to soak up the interpretations of each chapter. Given the large number of texts, which mirrors the human being's complexity, you may need to go through the contents several times, so as to get a good grasp of their meaning and to know yourself better. This will reward your patience.

The purpose of this report is to describe your psychological portrait and to highlight the most fundamental features on the personal area. The report begins with the analysis of your planetary dominants and outlines your personality's general traits before going into further detail. Minor dominants are analysed at the end of Annex 1, for purposes of clarity. Your report then delineates the various facets of your personality:

In general, even when relationships are not involved, we express ourselves and we feel according to our character and our personal motivations: this is indicated by the Ascendant and the Sun sign which both give details on the way we function. They shed a tremendously important light which allows to figure out your personality. Here, we describe your Sun sign (your inner self), your Ascendant (your behaviour as seen by others), and the ruler of the Ascendant (interesting additional pieces of information about the style of your personality). These descriptions alone cover nearly a third or a half of your psychological signature, depending on your natal chart characteristics.

Then, we address your sensitivity, or in other words, the way you receive things and how you express your emotions ; it works as a constant filter for all your exchanges, even when it becomes a more secondary element in your amorous relationship, because at that moment, affectivity prevails. Sensitivity is the way you perceive things, it is your radar, your daily mood, and at the same time, it indicates how you react to your entourage, on a daily basis. It is what others immediately see of you. In the second paragraph, we explain in which areas of life your sensitivity and your emotions are strongest, therefore, where you are most vulnerable.

After this, it is your affectivity, the way you love and how you charm, that comes into play as soon as you fall in love: the first part indicates its basic structure or its main form. The second part describes the areas where it is best expressed and how you display it, according to your personality.

A third fundamental area deals with your mode of action and your sexuality: how you behave, how you manage to obtain what you want, what kind of desires you have. There are twelve possibilities, very

different from one another. The study discloses the specific one that applies to you. In the second paragraph, we explain in which life areas you may most efficiently take advantage of your capacity for action and for conquest.

Your ways of communicating and of thinking are obviously among the major elements that must be integrated into the delineation and the description of your personality. Indeed, they influence your general behaviour and may modify or enhance the image your project (for instance, extraversion may “compensate” a weak affectivity, but a huge number of cases are possible). An additional chapter indicates the favourite areas where you enjoy communicating, thinking and meeting with people.

Besides, we analyze an even more personal aspect that is important to define and understand what may occur within your couple: each of us have a centre of interest, a privileged manner to be fulfilled or to achieve our destiny; this main motivation is indicated by the positions of your Sun and your chart ruler in the astrological houses and we provide you with its detailed description.

A natal chart contains the potential for specific fulfilment and a whole range of assets, protections and qualities. How does the lucky factor manifest in your personality? In which area can you best exploit your qualities? The answers are precisely revealed to you in this chapter.

On the other hand, we all feel in us a part of vulnerability, doubts and fears. How does this part of solemnity or serious side play out? How is it possible to handle it in order to evolve and to get rid of useless elements? All this information is provided to you in these two paragraphs.

Then, you can discover three additional traits of your personality that must be considered as secondary ones. They deal with your predispositions, which means that they need to be triggered by external events because they are not influenced by your will; let's call it a part of fate. Please, bear in mind that your destiny can unfold only in accordance with what you are: therefore, even if they belong to your more unconscious self, these characteristics are parts of you, definitely.

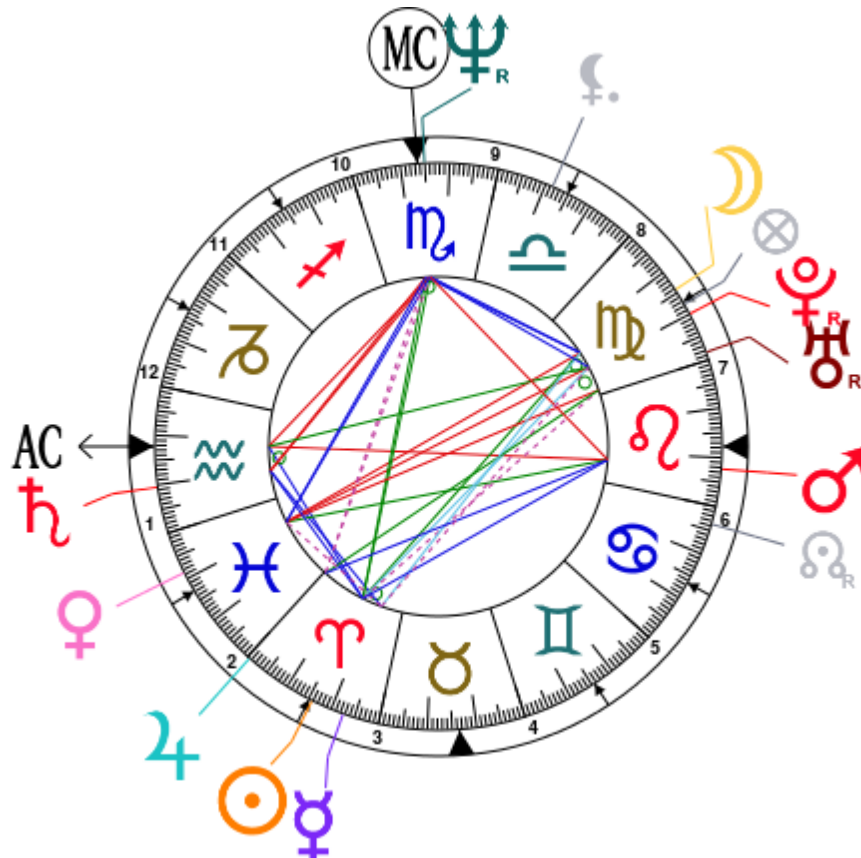
The karmic chart complements the psychological portrait or natal chart. It is based on the positions of the Lunar Nodes, the Black Moon, and the Part of Fortune. These elements of the chart, sometimes referred to as fictitious points, provide information about the spiritual meaning of your destiny. Owing to the fact that we all have in us acquired knowledge and the urge to go on a quest, our life is an evolutionary journey... However, these texts must be read with great caution: this is the reason why you will find this analysis in the Annex 2 of your report.

Your Planets, Houses, Aspects, and Natal Chart

Rafael Correa, born April 6, 1963, at 02:20 AM, Guayaquil (Guayas), Ecuador [79.50W ; 2.10S ; 5W00]

Natal Planets			In House	Natal Houses (Placidus)		
☉ Sun	15°47'	♈ Aries	House 3	House 1	12°14'	♒ Aquarius
☾ Moon	15°43'	♍ Virgo	House 8	House 2	12°52'	♓ Pisces
☿ Mercury	22°37'	♈ Aries	House 3	House 3	15°10'	♈ Aries
♀ Venus	8°38'	♓ Pisces	House 1	House 4	16°30'	♉ Taurus
♂ Mars	7°41'	♌ Leo	House 6	House 5	15°34'	♊ Gemini
♃ Jupiter	0°31'	♈ Aries	House 2	House 6	13°29'	♋ Cancer
♄ Saturn	20°30'	♒ Aquarius	House 1	House 7	12°14'	♌ Leo
♅ Uranus	1°37' R	♍ Virgo	House 7	House 8	12°52'	♍ Virgo
♆ Neptune	15°03' R	♏ Scorpio	House 10	House 9	15°10'	♎ Libra
♇ Pluto	10°02' R	♍ Virgo	House 7	House 10	16°30'	♏ Scorpio
♁ Node	26°21' R	♋ Cancer	House 6	House 11	15°34'	♐ Sagittarius
♃ Lilith	18°31'	♎ Libra	House 9	House 12	13°29'	♑ Capricorn
AS AS	12°14'	♒ Aquarius				
MC MC	16°30'	♍ Scorpio				

In keeping with the common practice, we consider that a planet posited within 1 degree of the next house belongs to that house. We allow an orb of 2 degrees for the ASC and the MC.



List of Your Active Planetary Aspects

Please find below the list of all the active inter-aspects which are interpreted in this report, in addition to your planets in sign, in house, and all your planetary dominants. Since the aspects between slow-moving planets are of a collective nature, they are not displayed, in compliance with our interpretation rules.

- ★ ★ ★ ★ ★ Sun inconjunction Moon, orb -0° 03'
- ★ ★ ★ ★ ★ Sun conjunction Mercury, orb 6° 5'
- ★ ★ ★ ★ ★ Sun trine Mars, orb -8° 05'
- ★ ★ ★ ★ ★ Sun sextile Saturn, orb -4° 43'
- ★ ★ ★ ★ ★ Sun sesqui-quadrant Uranus, orb 0° 5'
- ★ ★ ★ ★ ★ Sun inconjunction Neptune, orb 0° 43'
- ★ ★ ★ ★ ★ Sun bi-quintile Pluto, orb 0° 14'
- ★ ★ ★ ★ ★ Sun sextile Ascendant, orb 3° 32'
- ★ ★ ★ ★ ★ Sun inconjunction Midheaven, orb -0° 43'
- ★ ★ ★ ★ ★ Moon bi-quintile Mercury, orb -0° 54'
- ★ ★ ★ ★ ★ Moon opposite Venus, orb -7° 04'
- ★ ★ ★ ★ ★ Moon sextile Neptune, orb -0° 39'
- ★ ★ ★ ★ ★ Moon conjunction Pluto, orb 5° 41'
- ★ ★ ★ ★ ★ Moon sextile Midheaven, orb 0° 47'
- ★ ★ ★ ★ ★ Mercury semi-square Venus, orb -1° 01'
- ★ ★ ★ ★ ★ Mercury sextile Saturn, orb 2° 07'
- ★ ★ ★ ★ ★ Mercury sesqui-quadrant Pluto, orb 2° 24'
- ★ ★ ★ ★ ★ Venus inconjunction Mars, orb -0° 57'
- ★ ★ ★ ★ ★ Venus opposite Uranus, orb -7° 01'
- ★ ★ ★ ★ ★ Venus trine Neptune, orb -6° 24'
- ★ ★ ★ ★ ★ Venus opposite Pluto, orb -1° 23'
- ★ ★ ★ ★ ★ Venus trine Midheaven, orb -7° 51'
- ★ ★ ★ ★ ★ Mars trine Jupiter, orb 7° 1'
- ★ ★ ★ ★ ★ Mars square Neptune, orb 7° 21'
- ★ ★ ★ ★ ★ Mars opposite Ascendant, orb -4° 33'
- ★ ★ ★ ★ ★ Jupiter sesqui-quadrant Midheaven, orb -0° 59'
- ★ ★ ★ ★ ★ Saturn conjunction Ascendant, orb 8° 15'
- ★ ★ ★ ★ ★ Saturn square Midheaven, orb 3° 59'
- ★ ★ ★ ★ ★ Neptune square Ascendant, orb -2° 48'
- ★ ★ ★ ★ ★ Neptune conjunction Midheaven, orb 1° 27'
- ★ ★ ★ ★ ★ Pluto inconjunction Ascendant, orb 2° 12'

Meaning of Stars

Stars indicate the strength of the aspects. Two solid coloured stars (there are half-stars also), mean that the aspect is powerful enough to be noticed at the first reading.

We strongly advise that you read the paragraphs displaying less than two stars later on, after you have absorbed the full import of the other texts.

The yellow colour indicates a soothing and conciliating aspect, and the red colour, a dynamic and tense aspect. The red aspects enable you to evolve, to take action, and to learn to turn your "weaknesses" into assets through your life experiences. The yellow aspects are innate strengths on which you rely in order to grow better with the former...

Preamble

When interpreting a natal chart, the best method is to start gradually from general features to specific ones. Thus, there is usually a plan to be followed, from the overall analysis of the chart and its structure, to the description of its different character traits.

In the first part, an overall analysis of the chart enables us to figure out the personality's main features and to emphasize several points that are confirmed or not in the detailed analysis: in any case, those general traits are taken into account. Human personality is an infinitely intricate entity and describing it is a complex task. Claiming to rapidly summarize it is illusory, although it does not mean that it is an impossible challenge. It is essential to read a natal chart several times in order to absorb all its different meanings and to grasp all this complexity. But the exercise is worthwhile.

In brief, a natal chart is composed of ten planets: two luminaries, the Sun and the Moon, three fast-moving or individual planets, Mercury, Venus and Mars, two slow-moving planets, Jupiter and Saturn, and three very slow-moving planets, Uranus, Neptune and Pluto. Additional secondary elements are: the Lunar Nodes, the Dark Moon or Lilith, Chiron and other minor objects. They are all posited on the Zodiac wheel consisting of twelve signs, from Aries to Pisces, and divided into twelve astrological houses.

The first step is to evaluate the importance of each planet. This is what we call identifying the dominant planets. This process obeys rules that depend on the astrologer's sensitivity and experience but it also has precise and steady bases: thus, we can take into account the parameters of a planet's activity (the number of active aspects a planet forms, the importance of each aspect according to its nature and its exactness), angularity parameters; (proximity to the four angles, Ascendant, Midheaven, Descendant and Imum Coeli or Nadir, all of them being evaluated numerically, according to the kind of angle and the planet-angle distance) and quality parameters (rulership, exaltation, exile and fall). Finally, other criteria such as the rulership of the Ascendant and the Midheaven etc. are important.

These different criteria allow a planet to be highlighted and lead to useful conclusions when interpreting the chart.

The overall chart analysis begins with the observation of three sorts of planetary distributions in the chart: Eastern or Western hemisphere, Northern or Southern hemisphere, and quadrants (North-eastern, North-western, South-eastern and South-western). These three distributions give a general tone in terms of introversion and extraversion, willpower, sociability, and behavioural predispositions.

Then, there are three additional distributions: elements (called triplicity since there are three groups of signs for each one) - Fire, Air, Earth and Water - corresponding to a character typology, modality (or quadruplicity with four groups of signs for each one) - Cardinal, Fixed and Mutable - and polarity (Yin and Yang).

There are three types of dominants: dominant planets, dominant signs and dominant houses. The novice thinks astrology means only "to be Aries" or sometimes, for example, "to be Aries Ascendant Virgo". It is actually far more complex. Although the Sun and the Ascendant alone may reveal a large part of the character - approximately a third or a half of your psychological signature, a person is neither "just the Sun" (called the sign) nor just "the first house" (the Ascendant). Thus, a particular planet's influence

may be significantly increased; a particular sign or house may contain a group of planets that will bring nuances and sometimes weaken the role of the Ascendant, of the Sun sign etc.

Lastly, there are two other criteria: accentuations (angular, succedent and cadent) which are a classification of astrological houses and types of decanates that are occupied (each sign is divided into three decanates of ten degrees each). They provide some additional informations.

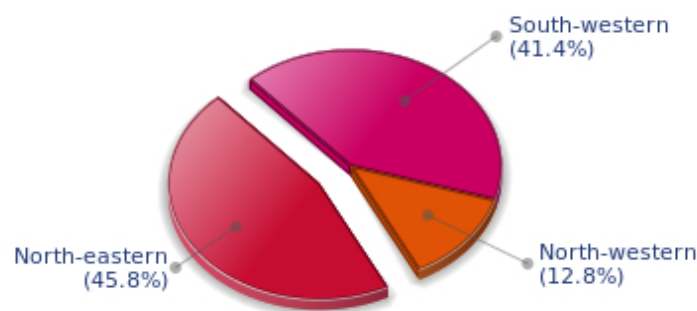
These general character traits must not be taken literally; they are, somehow, preparing for the chart reading. They allow to understand the second part of the analysis, which is more detailed and precise. It focuses on every area of the personality and provides a synthesis of all the above-mentioned parameters according to sound hierarchical rules.

As explained in the introduction of your Psychological Portrait report, minor dominants are analysed at the end of Annex 1, for purposes of clarity.

Your Planetary Repartitions

Each quadrant is a combination of the four hemispheres of your birth chart and relates to a character typology. The Southern hemisphere – the top of your chart, around the Midheaven – is associated with extraversion, action, and public life, whereas the Northern hemisphere prompts to introversion, reflexion, and private life. The Eastern hemisphere – the left part, around the Ascendant – is linked to your ego and your willpower, whereas the Western hemisphere indicates how other people influence you, and how flexible you are when you make a decision.

Your Four Quadrants

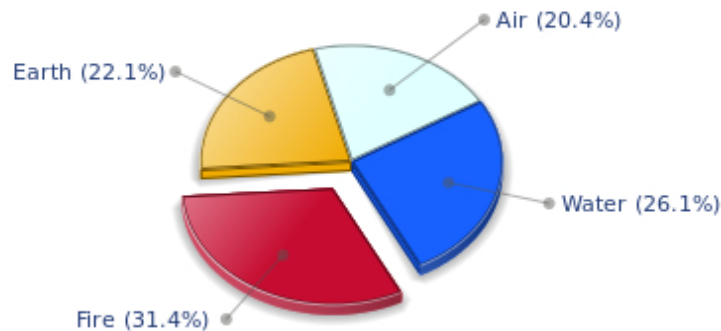


Rafael Correa, the nocturnal North-eastern quadrant, consisting of the 1st, 2nd and 3rd houses, prevails in your chart: this sector favours self-assertion and material security to the detriment of your perception of others. You consider self-transformation to be a hazardous adventure. You are inclined to seek stability and you tend to protect yourself with your actions. Possession, acquisition but also communication, without opening up too much, are part of your deep motivations. You are rather autonomous and constant, however it is important that you pay more attention to others, so that you can improve your outcomes.

Your Dominant Modes and Elements

Rafael Correa, here are the graphs of your Elements and Modes, based on planets' position and angles in the twelve signs:

Your Four Elements



Rafael Correa, Fire is dominant in your natal chart and endows you with intuition, energy, courage, self-confidence, and enthusiasm! You are inclined to be passionate, you assert your willpower, you move forward, and come hell or high water, you achieve your dreams and your goals. The relative weakness of this element is the difficulty to step back or a kind of boldness that may prompt you to do foolish things.

The predominance of Water signs indicates high sensitivity and elevation through feelings, Rafael Correa. Your heart and your emotions are your driving forces, and you can't do anything on Earth if you don't feel a strong affective charge (as a matter of fact, the word "feeling" is essential in your psychology). You need to love in order to understand, and to feel in order to take action, which causes a certain vulnerability which you should fight against.

The twelve zodiacal signs are split up into three groups or modes, called quadruplicities, a learned word meaning only that these three groups include four signs. The Cardinal, Fixed and Mutable modes are more or less represented in your natal chart, depending on planets' positions and importance, and on angles in the twelve signs.

Your Modes



The Fixed mode corresponds to a majority of elements in your chart, Rafael Correa, and represents the desire for security and durability: you are able to concretely appreciate a situation and its stability. You definitely prefer to play the role of a loyal, obstinate and hard-working person, rather than to try new and risky experiences - beware, however, not to confuse obstinacy with intransigence. You structure, cement, and strengthen everything you find on your way: it is your nature, although you are not especially interested in swiftness: slow and steady...

Your Dominants: Planets, Signs and Houses

The issue of dominant planets has existed since the mists of time in astrology: how nice it would be if a person could be described with a few words and one or several planets that would represent their character, without having to analyse such elements as rulerships, angularities, houses, etc!

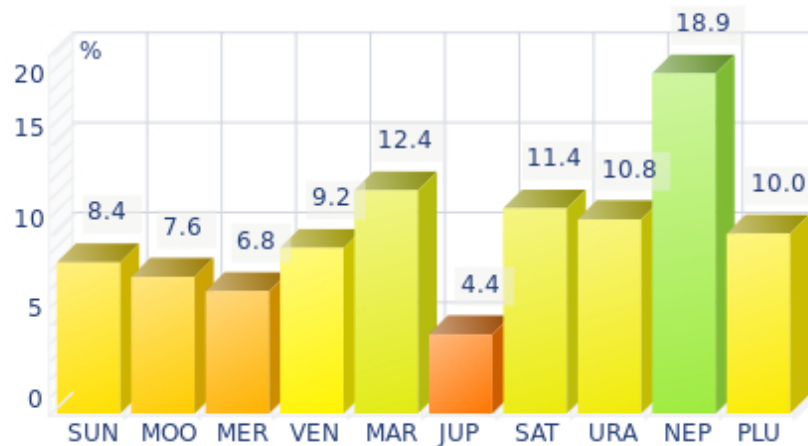
The ten planets - the Sun throughout Pluto - are a bit like ten characters in a role-play, each one has its own personality, its own way of acting, its own strengths and weaknesses. They actually represent a classification into ten distinct personalities, and astrologers have always tried to associate one or several dominant planets to a natal chart as well as dominant signs and houses.

Indeed, it is quite the same situation with signs and houses. If planets symbolize characters, signs represent hues - the mental, emotional and physical structures of an individual. The sign in which a planet is posited is like a character whose features are modified according to the place where he lives. In a chart, there are usually one, two or three highlighted signs that allow to rapidly describe its owner.

Regarding astrological houses, the principle is even simpler: the twelve houses correspond to twelve fields of life, and planets tenanted any given house increase that house's importance and highlight all relevant life departments: it may be marriage, work, friendship etc.

Rafael Correa, here is the evaluation diagramme for your planets:

Your Dominant Planets



The three planets that are most highlighted in your chart are Neptune, Mars and Saturn.

With Neptune as one of your three dominant planets, you are a secretive and ambiguous person, often confused or unclear about your own motivations! Indeed, you are endowed with unlimited imagination and inspiration, as well as with an extreme sensibility that may turn you into a psychic or a clairvoyant. On the other hand, your impressionability is such that you may have difficulties in separating what is concrete and solid from illusions or dreams.

A mystic, a visionary or a poet, you daydream, like any Neptunian, and you see what few people only can see, all of this being shrouded in aesthetic mists when you are fired with enthusiasm.

A boundless, infinity-loving man like you is inevitably likely to be more vulnerable and easily hurt because of your acute perception of events. In such cases, you are hit full in the face, and you may sink into gloomy daydreamings and dark melancholy.

That said, this mysterious aura definitely gives you an indefinable charm in the eyes of your close friends who are often fascinated by your unique ability to feel and to see what ordinary people can never see!

Mars is one of your dominant planets and provides you with its efficient energy and enthusiasm: with a powerful Mars in your chart, action - but also will and ability to undertake - is not an empty word for you. You are active, dynamic, willing to fight, courageous, and you are never afraid to move mountains, even though risks are part of the adventures that you start with determination.

However, your patience is not always up to your boldness and a kind of feverishness, or even anger, can tarnish the quality of your achievements. That would be a pity since the Marsian is a champion in matters of efficiency! Mars symbolizes display of action, conquering spirit that favours discipline and order - beware of not being fussy - and lies at the frontier between action and brutality, between conquest and potential aggressiveness.

Saturn is part of your dominant planets: among the facets of your character, you have a grave and serious side, wise and somewhat severe, since your concentration can be powerful, to the detriment of carelessness and friendliness.

You often look austere, but it is only an appearance, a kind of modesty or reserve; however, it is true that the Saturnian, who is fond of time, effort, asceticism, rigour and sobriety, may have popularity issues. Nevertheless, honesty and straightforwardness, reliability, as well as slow, wise and deep mental process, although not very popular and visible qualities, eventually become noticed and appreciated. Saturnians' second part of life is usually easier and more fulfilling.

Like the Jupiterian, your Saturnian facet prompts you to seek the essential, security, and longevity. However, the difference with the former is that you will never give priority to wealth or "the bigger, the better" philosophy for the sake of power. Saturn, like Jupiter, symbolizes social integration, and it is usually considered positive to have a harmonic Jupiter and Saturn in one's chart because of their social adaptation capacities.

Your vulnerability lies in your too serious and austere side, which may lead to unwanted loneliness and affective frustration. This generally does not last because Saturnians often hide deep down a golden heart that ends up revealing itself...

Your Dominant Signs



In your natal chart, the three most important signs, delineated according to the above-mentioned criteria, are, in decreasing order of strength, Virgo, Aries and Aquarius. They are often prominent because your Ascendant and your Sun are posited there. However, it is not always the case: it may be because they are occupied by a cluster of planets, by a planet near an angle other than the Midheaven and the Ascendant, or because two or three planets are very active and form numerous aspects from these signs. Therefore, you partly take on the three signs' characteristics, which are somehow superimposed on your natal chart, and all the more so if any of the signs in question is highlighted.

Virgo, associated with perfectionism, numbers and reason, is among your dominant signs: you inherit its sense of responsibility and tidiness, a clear mind, an unfailing logic, as well as a need to be useful and to fulfil your task to the best of your abilities. Obviously, people may think that you are too modest or reserved, suspicious or pessimistic because of your exceedingly critical mind, but aren't logic and wisdom great qualities? Of course, they are. Moreover, you keep your feet on the ground, you never behave irrationally and you are helpful and hardworking - what more can you ask for?!

Arian blood runs through your veins! You have that enthusiasm, frankness, courage, and fastness which usually make you so likeable in spite of your somewhat rough, naive, or violent side. As a bonus, Aries'

gushing fire always gives you the impetus to make a fresh start, should you stumble or undergo life hardship!

Aquarius is one of the most important signs in your natal chart: it endows your personality - at least one of its facets - with originality, to the point of eccentricity, in spite of a sometimes distant and humane side. Likeable and impassive at the same time, you are a paradoxical man, very hard to define because the two planets Uranus and Saturn blend their qualities to create the so complicated and endearing sign that inspires your character. Saturn's seriousness and impassivity is added to Uranus' rebellion, talent, individualism, charisma, extravagance, and unpredictability! One of your main characteristics is that you never open up on a personal basis, but you tend to do so easily in public. You are actually quite strange. Sexy and charming in public, despite your nice and sociable character, you could frustrate many of your admirers in private because of your impossibility to show deep and warm affection, emotions, tears... But appearance and reality are two different things anyway - you are a kind of a genius, or you have at least a tremendous charm with this sign. You have many friends and an active social life. If you are detached in your love life - only in this aspect, since the rest of chart will confirm it or not - this is no big deal!

Your Dominant Houses



Houses 3, 1 and 7 are the most tenanted ones in your natal chart. To compute their strength, planets and angles are weighed according to various astrological criteria such as swiftness, activity, angularity, rulership etc. From the analysis of the most tenanted Houses, the Astrologer deduces the fields of activity that are most relevant to you, be it because of what you are experiencing, or what you may experience in the future, or because of your deep inner motivations.

As the 3rd house is one of the most important houses in your chart, communication plays a major role in your life or in your deep motivations: frequent short trips, open-mindedness - which may offset a lack of mutable signs for instance - listening, discussion, interest in learning, knowledge accumulation or long-term studies, etc., are all areas that greatly appeal to you and are part of your daily life.

With a dominant 1st house, your magnetism is powerful, and your individuality as well as your willpower are out of the ordinary. You are a determined, strong-willed, and assertive person, with this relative criterion at least.

It is likely that you never go unnoticed when you are in a crowd or in a reunion: an important 1st house suggests that you are a charismatic person with above average vital energy, especially if the Sun is

present in this sector.

Your personal interests are always important and you never forget them, which doesn't mean that you are self-centered, but only that you behave according to what is in harmony with your deep nature!

Your 7th house is one of your dominant houses: it symbolizes other people, marriages, associations, contracts, and partnerships. Your personal achievement and maybe your problems - depending on the rest of your chart - are mainly influenced by your rapports with others, the area in which you tend to commit yourself a lot. You appreciate communication, and you give importance to others' opinions. Success requires the support of others, which seems obvious and natural to you. Your marriage generally contributes to your fulfilment.

Your Style, Behaviour, and Peculiarities

What is commonly known as "sign" indicates the position of the Sun in the Zodiac. The Sun highlights all the characteristics of the sign he tenants. According to astrology traditional rules, these characteristics are all the more pure and exact when the Sun is strong in the sign, or when the sign is particularly highlighted within the chart. Here, we indicate the pure characteristics of the sign but you must bear in mind that they may only shed a light on a particular aspect of your personality. Indeed, the sole sign of the Sun, or of the Ascendant, can never describe an astrological chart because it depends on the degree of strength of the said sign in your chart.

Another important point must be underlined. Contrary to the Ascendant, which clearly describes your appearance, your vitality, your physical constitution, your spontaneous behaviour and the image you project, your Sun sign describes your inner self, which you may not completely be aware of, and which may emerge gradually as you mature: it is about your inner personality that you reveal only to the members of your entourage whom you trust. The Sun sign is likely to be the final form of your personality, once it has evolved in line with the energies of the other parts of your chart, the beginning of which is seen in the Ascendant, your external "bark".

The Ascendant is one of the major components of your natal chart. It is the zodiacal sign that rises in the East at the very moment of your birth. To calculate it, it is therefore necessary to know your exact time of birth.

It provides with a wealth of information on your personality. It is one of the key features that allows the analysis of several parts of you, such as your appearance, your character as it is initially perceived and your immediate behaviour. It describes the external aspect of your personality which you always display, but it also describes your physical constitution in the long-term, in other words, your health.

Please be aware that, in spite of the importance of the Ascendant, the accuracy of its description depends on how strongly highlighted it is in your natal chart. We use the entire set of astrological rules to assess the strength of the Ascendant. In most cases, the Ascendant is as revealing as your "sign", i.e., the sign where the Sun is posited at the time of birth.

You were born under the sign of Aries and your Ascendant is in Aquarius

Before broaching the details of the meaning of your Sun and your Ascendant, as a preamble, we offer a brief generic interpretation of their combination in your chart:

Would your favourite hobby be to jostle the people and the world surrounding you? Indeed, neither Aries nor Aquarius is inclined to mope around or to let fatality wear them down. Owing to your Aquarius Ascendant, you seem to project a Promethean hope and to be driven by catching optimism. Although you are on the lookout for newness or for any promise of improvement, you keep your seriousness and your distance, which may disconcert your interlocutors. This is undoubtedly one of your original traits. However, when people get to know you better, they discover your Aries inner self, which is more oriented towards immediate action, less airy and impersonal than Aquarius, and also more willing to straightforwardly assert its intentions, its feelings, and its ideas.

You were born with the Sun in Aries

Your natural energy is cut-and-dried. It may prompt you to take the driver's seat wherever you are. Were it not for the strange feeling of sympathy you arouse, you would seem to be arrogant. Charging ahead is not devoid of drawbacks. Your courage and your restlessness may hurt you and cause you to doubt, all of a sudden. As a consequence, your courage, your honesty, your enthusiasm and your straightforwardness may turn into aggressiveness, rebellion and vulnerability that were never suspected. Fortunately, the level of your dynamism is very high and your instinctive and pugnacious side, your particularly profuse energy will not leave you helpless for too long. The fire in your blood will put you back on the saddle towards new stampedes and conquests, as ambitious and glorious as they are perilous.

Because you are born under this sign, you are courageous, honest, enthusiastic, dynamic, swift, extroverted, straightforward, effusive, warm, impulsive, adventurous, bold, martial, competitive, but you may also be gullible, domineering, self-centered, impatient, foolish, thoughtless, childish, irascible, reckless, primary and a blunderer.

In love, Sir, more often than not, your passions are strong and varied. Far from being roadblocks, obstacles have a stimulating effect. You like quick victories and your love life is a series of conquests and of break-ups, as boredom often puts an end to the initial love that made you move mountains.

Your sexuality is powerful and prevails over feelings. You may marry early or on impulse, but it does not prevent you from having a rich and varied love life. Usually, you have few children.

Your Ascendant is in Aquarius

In the sentimental sphere, you are particularly sensitive to the values of friendship, in the sense that you see yourself as a link within a chain, certainly a different and original one, but with no will to flatter your ego or to individually assert yourself. On the contrary, your aim is to immerge yourself in your friendly relations and to participate in projects and ideals of the whole human community.

As you are born under this sign, you are idealistic, altruistic, detached, independent, original, surprising, gifted, contradictory, innovative, humanistic, likeable, friendly, self-confident, impassive, quiet, intuitive, creative, charitable, elusive, disconcerting, generous, tolerant, paradoxical, and you cannot stand any kind of constraint. But you may also be marginal, resigned, distant, utopian, maladjusted, eccentric and cold.

In love, Sir, you are totally elusive. The human warmth you show in your group meetings quickly turns into a distant and sober attitude as soon as you are alone together. It is obvious that it may cause some problems if you were thought to be different. Your reluctance to talk about yourself, although not disturbing under other circumstances, is quite inappropriate in the private sphere.

The distance you maintain, as well as your lack of emotionalism, may suddenly disappear to give room for a real relationship, since you are prone to mood swings. The necessary condition is that you have centres of interest to share with your partner. Converging passions will ensure that the magic of your relationship can develop. Ideally, a deep friendship should be the basis of your initial relationship, because friendship is a feeling that particularly suits you; in such a case, imperceptibly, conducive closeness may transform friendship into the true love you give yourself up to eventually.

You are loyal, faithful and surprising. Once you find your soul mate, you feel more comfortable and, if the harmony with your partner is rich enough, you may stay with her your whole life through. You certainly have moments that seem strange to your partner, for instance when you are impersonal or even cold. But your natural magnetism, your communication skills and your shrewdness as you play with words, work wonders for patching things up.

You avoid problems that may cause emotional or sentimental complications. Because you are often disconcerting, your partner may need some time to adjust: you disappear suddenly when you do not want to deal too closely with your individuality. And you reappear as quickly with excuses and a charming casualness, and again, you are disconcerting!

You are interested in things that are out of the ordinary. Your erotic imagination may be immense and inexhaustible. You belong to the cerebral type and you cannot separate physical and sentimental aspects from your imagination's intense activity. As a result, you explore with lucidity all the possibilities that may suit you best.

The ruler of your chart is in Virgo

The ruler of the Ascendant, also referred to as the chart ruler, brings a few interesting nuances to the meanings provided by the Sun and the Ascendant. The sign in which the ruler of the Ascendant is posited fine-tunes the style of personality described by the Sun and the Ascendant. It may strengthen it if the sign is identical to either of them.

The ruler of the Ascendant, Rafael Correa, is Uranus. In the sign of Virgo, it turns you into a cautious and rational person, sometimes to the detriment of your feelings. You like to improve yourself, and you pay a great deal of attention to details. You respect the rules, and you appreciate well-done work. However, you may lack self-confidence or you may hesitate, perhaps because you hate to make mistakes, since you believe that truth is a major quality.

Aspects to your Ascendant

Several planets form an aspect with your Ascendant, Rafael Correa. Therefore, in their specific way, they modify your behaviour and your personality, which do not take on the pure characteristics of your Aquarius Ascendant only, but which are a blend of its characteristics with those of the said aspects.

★★★★★ Mars opposite Ascendant, orb -4° 33'

Mars in opposition to your Ascendant is not strictly speaking a dissonance, Rafael Correa, since at the same time, he is in conjunction with your Descendant, the angle facing the Ascendant. Therefore, this configuration should be interpreted as a conjunction. Mars on the Descendant indicates a good capacity for action with an above average energy which may be excessive. You tend to take action for, and according to other people rather than for you own interests - which is all to your credit. In some circumstances, your behaviour may come across as hot-tempered, even aggressive, whereas you intend to act smoothly for everyone's good. Generally speaking, with this dynamic configuration, you can but benefit from toning down your actions with more flexibility and gentleness. This is how the image you project can become more appreciated and more rewarding. Indeed, whilst you mean to do good, you may be a bit brutal!

★★★★★ Neptune square Ascendant, orb -2° 48'

Neptune is in dissonance with your Ascendant, Rafael Correa. You may have difficulties in controlling your emotions, and you tend to hesitate about the behaviour to adopt in society. In some circumstances, you distrust everyone, yourself and other people, without knowing the reason why. Keep your feet on the ground and do not allow your imagination to carry you too far away from sheer reality! No one nurtures bad intentions towards you. This is something you must realise if you do not want to get worked up about... nothing.

★★★★★ Sun sextile Ascendant, orb 3° 32'

Your will is fuelled by a strong energy, Rafael Correa. It enables you to take quick decisions which totally match your personal ethics. Thanks to this good harmony between the Sun and your Ascendant, you feel rather good about yourself, and your inner self perfectly matches the image you are willing to show!

★★★★★ Saturn conjunction Ascendant, orb 8° 15'

Saturn is in conjunction with your Ascendant, Rafael Correa. In general, this aspect endows you with a responsible and serious behaviour, sometimes even imbued with solemnity. This configuration brings about a cautious and thoughtful side, may be to the detriment of spontaneity. With this conjunction, you appreciate being in control rather than indulging in laid-back attitudes, although it might imply being carried away into unknown territories, which you definitely are wary of.

★★★★★ Pluto inconjunction Ascendant, orb 2° 12'

Pluto is in dissonance with your Ascendant, Rafael Correa. You may be slightly aggressive and at the same time, mysterious or impossible to understand, to people's eyes. You are sensitive, instinctive, and you feel everything more deeply than anyone else. Be careful that this feature does not mark your behaviour with too unsociable a note. Indeed, it would be a pity since the forces at work within you can be easily controlled and turned into assets if you care to stand back. Detecting other people's weaknesses is fine. But don't misuse this ability!

Your Sensitivity

Your sensitivity is dominated by your reason, Rafael Correa, and you tend to analyze your emotional reactions in the slightest details, as if you wanted you hold them at bay so that they cannot overwhelm you or weaken you. Your nature is anxious, shy, you do not like to be in the forefront and you lack self-confidence. You are extremely perfectionist, you need to examine, to organize and to plan everything according to your logic. You like to help and to feel that you are useful, in your own work or through your wise and clever advice. You may also be very demanding and critical, even unbearable, because you are insistent and you find fault in everything. Learn to gain some self-confidence and do not constantly be ready to criticize...

Rafael Correa, your emotions are intense, even violent sometimes. You feel things and react with so much strength that it may torment you! On the other hand, you are extremely intuitive, warm, imaginative and you possess a kind of indefinable charm full of density and mystery. Your sharply developed intuition endows you with a predisposition to clairvoyance.

Matters linked to death and inheritances, family investments etc., may play an important role in your destiny. Your mother often has a prominent role and may strongly influence your major life decisions until you become an adult.

★★★★★ Moon sextile Neptune, orb -0° 39'

This harmonious Moon-Neptune aspect indicates an exceptional receptivity. You are sensitive to ambiances and you can grasp what is at stake in any given situation. You can pick up things in the general atmosphere that the majority of people miss out. Your deep intuition allows you to feel the subtlest details, that « little nothing » which is the key to behavioural patterns. Inspiration is your guide and imagination accompanies your daily rhythms. Mysteries, psychology, esoterism, fantasy, the supernatural... one of these fields, at least, is of concern to you. You pay utmost attention to your inner life, to moments of tranquillity when you relax, when you allow your mind to wander at will. The danger is that you may seek refuge in the imaginary and that you shirk reality.

★★★★★ Moon conjunction Pluto, orb 5° 41'

You are a riddle for people... and for yourself. This harmonious Moon-Pluto aspect arouses your desire to understand and to express elements hidden in your unconsciousness. You are interested in the occult, in laws that rule beings and things in the dark. You like to pull strings and to manipulate situations without people's knowledge in order to remain mysterious. You feel fine when you are not in the limelight, but you intervene in the dark, with subtlety. Your intimate behaviour reveals the distance that you strive to keep in order to protect your inner life. You gladly cultivate the angel of the bizarre, even in your life habits and in your daily rhythms.

★★★☆☆ Moon opposite Venus, orb -7° 04'

With this Moon-Venus aspect, passion and sensuality may often upset your well being and your tranquillity. Your way of loving is dual. You either accept life simple joys, or you live through intense emotions and consuming fevers. It is difficult for you to reconcile your daily life with your affective or sensual desire. Habits kill passion, whereas passion forbids the carelessness that is yet indispensable for your fulfilment. This aspect suggests the traditional mother/woman and father/lover antagonisms that are incompatible although it is possible to experience them alternately. It is important that you balance these antinomial desires: you may let the turmoil of your heart break the monotony of an amorous life devoid of excitement but it does not mean that you must forsake the reassuring values of a couple, or

family cell, where you can rest at will and give free rein to your intimate behaviour. You may indulge yourself but don't forget that you must deserve love.

★★★★★ Sun inconjunction Moon, orb -0° 03'

In your chart, two polarities are clearly opposing - or complementing – each other: on the one hand, solar values, the image you project and the models you follow. On the other hand, lunar values, moments of letting-go and well being through casualness. When you commit yourself in a project, it is often to the detriment of your peace of mind. Conversely, you completely feel that you are your true self only when you are no more under the scrutiny of the outside world. Therefore, you separate your social and professional activities from your private life and you seldom match the requirements of the former with those of the latter. It may be a hurdle, a fundamental anxiety. It may also be an obvious asset, when it is well integrated: in that case, you succeed in assigning to yourself, and in fulfilling, objectives that are not necessarily in line with your intimate natural demands, which are preserved and separated from your intentions, your ambitions and your expectations. Thus, a strong will can turn this Sun-Moon hard aspect into a rich instrument for creativity. A shadow zone, or uncertainty, still remains: on the affective plane, you are very sensitive. May be too much, to the extent that you become vulnerable in many circumstances. Because in different periods of your life, your landmarks (solar) and your intimate balance (lunar) will be simultaneously challenged.

Your Affectivity

In your chart, the Sun is in Aries and Venus, in Pisces. Paradoxical association: the enthusiasm and the spring freshness of the Aries Sun echo the subtlety and the distance of a Piscean Venus. Your aspirations (solar), prompt you to be carried away by your heart impulses and to exchange with spontaneity ... but your desires (Venusian) obey different rules that are elusive, and sometimes, irrational. Between the beginning and the end, the frontier is often tenuous and the balance is fragile. Your affective behaviour may seem disconcerting because you can abruptly shift from enthusiasm to renunciation. This is because your senses do not follow your ideals, because your desires do not match the patterns that appeal to you, as sincere as they may be. Your loved one does not necessarily resemble the conceptualized ideal you dream of. Attraction – or repulsion – is based on ineffable impressions that short-lived and sudden impulses cannot erase nor construct. Although you may show a certain naivety, your senses quickly discriminate between the one-night-stand illusory enthusiasm and the essential harmony without which two persons drift apart, sooner or later. Love is not simple! And if it were, indifference would rapidly triumph over the wildest feelings.

Compassion and self-sacrifice: you are fond of this romantic mode and you are willing to express your feelings, the intensity of which is unlimited, Rafael Correa. With excitement and imagination, you dream your amorous relationships as much as you actually live through them. The line between the concrete world and your huge hopes is so tenuous that you don't know anymore where it is, although your particularly rich sensuality prompts you to experience your feelings concretely. You want to share communion and passion with your partner. The lyrical flights of your feelings break from your heart as waves that you do not attempt to control because they give you a real, almost voluptuous and carnal joy. You give a lot – sometimes too much - without reservation, almost without propriety, totally revealing your vulnerability during your amorous exchanges because you are sure of the quality and the might of your feelings: they are so powerful and overwhelming that you are aware that nothing can resist them.

Rafael Correa, Venus in the 1st house (also called Ascendant) represents your behaviour or your character, as seen by others. This position contributes to soften your personality and to bring a natural charm and an easygoing quality. It gives you a sparkling, attractive and sexy side: not only do you easily express your feelings in a seductive and affectionate way, but they are also an integral part of your vision and the image you project. You want to please, you have a taste for beauty, even luxury, arts, music, you especially look for harmony in everything and diplomacy is one of your most renowned qualities. Therefore, you are lucky in the sentimental sphere, you establish links easily and you can expect to have long-lasting relations. Since you happily express your feelings, it's only right that you reap what you sow. There is no gap between your behaviour and your feelings, which endows you with exceptional assets for seduction.

★★★★★ Venus opposite Pluto, orb -1° 23'

Nothing is simple in love. You consider your love life with a distant and remote glance. You do not believe in obvious, transparent relationships. Love is a complex issue and its machinery is beyond you. To avoid delusions and indifference, the rules must be changed. Your feelings are alternately cruel and passionate, distant and burning, often paradoxical. Are you the executioner or the victim? Power struggles are omnipresent in your affective life. You seem unable to take life as it comes and to love without asking yourself questions, without doubting. You often love those who are indifferent towards you, while you despise those who love you. It is important that you change your attitude if you want a smooth and happy life. Rely on your forte: an indisputable lucidity that makes it impossible to delude your heart.

★★★★★ Venus opposite Uranus, orb -7° 01'

Your sentimental life is adventurous: you prefer Bohemia to the comfort of a quiet but shaky love affair. You are a hard-liner and you think that love should be genuine or it should not be at all! You have difficulties in resisting your heart impulses and untimely passions that may challenge your affectivity. You need air, freedom and a relative independence. You also need to fully experience your love impulses, regardless of the price to be paid. The heart has its own reasons that no rules can hamper... The obvious danger may be to cause dramatic hurly-burly. Your inflexibility on the affective plane does not favour a quiet life where « one makes do with very little ». You are the all or nothing type. But does the absolute really belong to our world?

★★★★★ Venus trine Neptune, orb -6° 24'

Your sentimental life unfolds like a strange dream. Love is too delicate to be tamed or controlled. You follow your heart impulses in an idyllic ambiance, far from reality's ordinary constraints, far from conventions and conformism. You exude a particular charm, discreet and subtle. But your affectivity may be disconcerting. You are very sensitive to marks of affection and tenderness, although you are aware that love cannot be bought or won. What is meant to be will be and it is impossible to know the hows and the whys behind a prevailing harmony. The obvious danger is that you may refuse to make any effort in such conditions. Living as a couple must feel natural and you do not need to objectively build the foundations of a relationship. You are an idealist and you dream of an affective paradise, which may be too good to be true...

★★★★★ Venus inconjunction Mars, orb -0° 57'

This Venus-Mars aspect indicates a sensitivity all on edge and an impulsive character. Emotions and heart impulses cause a marked tension. Life is an affective battlefield. Love is omnipresent but often fragile: impulsiveness reigns over the realm of feelings. The object of desire may become irresistible and

implacable, or the sense of confrontations prevents affective tranquillity. However, the richness of your emotional responses is to be noted: you are more inclined than others to be guided by amorous fevers and you live intense passionate experiences. Your overwhelming impressionability must be contained. Romantic people seldom enjoy tranquillity!

★★★★★ Mercury semi-square Venus, orb -1° 01'

If this Mercury-Venus aspect is experienced on the dissonant mode, stability may not be the forte of your affective life: when desire loses its fine edge, the need to discover new forms of emotions and feelings leads you to multiply the number of relations, sometimes to the detriment of the former ones. Again and again, you keep on looking for the object of your desire without ever being satisfied with the persons you know too well. Your natural likes and dislikes can also bias the relationship games in which you indulge. A subtle tug-of-war between your feelings and your need for novelty, between the reasons of the heart and those of the mind... You must learn to master these ambivalences, to reconcile desire and thirst for the unknown. If you accept to pay some attention, the person who naturally attracts you can captivate you in a sustainable way. Then, love becomes an inexhaustible source of interest.

The Way You Take Action and Your Sexuality

What an energy, Rafael Correa! You take so many initiatives, you have so much strength for action, construction and struggle! You are part of the conquerors, loyal and concerned about panache. Your vitality is such that you can achieve your objectives and release all your creativity. However, you are so proud and so unyielding that you cannot tolerate the faintest annoyance on your way: if you are vexed, you may turn into the opposite direction as a matter of reaction. Sexually, your magnetism and your energy work wonders. You are not complicated and, as long as your slightly domineering nature is respected and you are granted due admiration, all goes perfectly well. You usually have a lot of self-confidence and you believe in you. This characteristic feature may turn you into a hero with Hercules's strength and solar charisma.

It is in the area of your work environment that you are most active and pugnacious, Rafael Correa. Or in your daily life, if you do not work.

You are a hard-worker, completely dedicated to the service of others: being helpful and efficient is your battle horse. Indeed, it is so obvious! Ask the opinion of your colleagues or your entourage... Your efficiency is not to be proved. You get things moving, you progress, you are very keen to improve yourself, and your boss can only rejoice that his staff contributes so actively.

The areas of health and pets are traditionally favoured by this planetary configuration. However, do check your Mars' aspects if you intend to be a tamer!

In any case, the daily work sphere is the area where you can deliver to the best of your abilities, in terms of action. The only reservation may be not to overdo.

★★★★★ Mars trine Jupiter, orb 7° 1'

Coordinated action wins over almost all obstacles! You mobilize your energy and your fighting spirit advisedly and you take timely action. This is the reason why you are efficient in situations requiring courage, determination, swift responses and diplomacy, altogether. You do not fear confrontations but

you never provoke them unnecessarily. You take advantage of your chances and you adjust your behaviour to concrete situations. You empirically handle events with relevance. The only danger is that you may be overzealous to seize any opportunity... even those that are not necessarily good in the long run. You should take the time to carefully consider the facts and their consequences. The swiftness of your reactions must remain an asset.

★★★★★ Mars square Neptune, orb 7° 21'

You behave like a bohemian person and you are led by an ideal that you may not control. Your passions are undoubtedly sincere. However, you may target wrong objectives. You engage on hopeless struggles and meaningless confrontations. It is important that you watch out for fanaticisms from all sides and that you remain clear-sighted in the face of your exalted feelings. Your sincerity may work wonders when you champion lost causes. The most difficult thing is probably to keep your exacerbated sensitivity under control. Because you are deeply moved by facts, because you are sensitive to injustices and to the world's woes more than the average people, you embark on incessant battles, at the risk of undergoing a few delusions, on occasions.

★★★★★ Sun trine Mars, orb -8° 05'

This planetary Sun-Mars aspect reinforces courage, determination and energy. The need for action is obvious. Whatever your will designs is implemented with fieriness, despite all oppositions. You are decisive and wilful, even foolhardy. Your behaviour may be heroic: you know how to face adversity, to stand for your rights and your decisions, regardless of the confrontations you may have to cope with. The only danger may be that you overestimate your chances and your strength. But your audacity turns out to be rewarding, more often than not.

Your Intellect and Your Communication Style

You enjoy discussing and exchanging ideas. You know how to put forward sharp and provoking comments in order to keep the debate moving ahead. You tend to use words to put yourself in the forefront and you may become a leader. Your exact and swift, dazzling understanding favours a direct approach to problems and helpful decisions. You are inventive, intuitive and you are in a hurry to bring your projects to a successful conclusion. You do not pay attention to details and you prefer to go to the essentials. However, your decision-making process may be too impulsive and may throw you into unconsidered actions; this is the reason why it may be good that you listen to other people's advice, that you do not walk headlong, and later, be forced to reverse back as a result, a situation you do not appreciate too much.

Communicating, thinking, and moving: all these activities match your natural tastes, sometimes to the detriment of concrete results in which you're not too much interested. That said, Rafael Correa, you excel in activities where communication, reflection and mobility - in the literal and mental meaning of the term - are required: teaching, law, journalism, human resources, transportation, etc.

Knowledge acquisition and sometimes, mastering the art of writing are among your favourite pastimes. You are happy as long as your mind is in turmoil, and even then, you need to have a lot of people around you listening to you, unless you are the one to glean for yourself, here and there, the intellectual food you are so fond of.

★★★★★ Mercury sextile Saturn, orb 2° 07'

Your vision of the world is rigorous and objective. An exemplary logic characterizes your mental attitude and your human relations. Your discerning faculties overlook no detail. You need to know the whys of your life and to explore the backstage of your surrounding world. The deepness of your relations dismisses superficial connections. It may be the reason why your interest is aroused when you are in touch with elements that are alien to your mode of functioning. You have the soul of a researcher, regardless of the form that your investigations may take. It may be an exacerbated curiosity for human topics or a will to understand relationship stakes. It may also be a hobby or a course of study that introduces you to a riddle. It does not matter! Life is a perpetual quest for the unknown. Your critical mind is highly developed and you take commonplaces for granted only after thorough consideration.

★★★★★ Sun conjunction Mercury, orb 6° 5'

You know how to play with your image, how to give multiple representations of yourself. A precious asset: you are sensitive to other people's opinion and you adapt yourself to the audience. Of course, there is a "show" side in your manner that may prevent perfect cohesion. But that's the other side of the coin, for an extraordinary capacity to discover. This aspect translates into an acute sense of observation, an intense desire to learn and to bring everything to light. You strive to be informed in many circumstances, to understand the machinery of the world surrounding you, particularly regarding all human topics. And you will change according to that information and the knowledge gained. You have the chameleon's adaptation powers. And its vulnerability, as well.

★★★★★ Mercury sesqui-quadrate Pluto, orb 2° 24'

Forget simplicity! You definitely enjoy acting behind the scenes and dealing with what is going on underneath. You play games and you operate in the dark. You leave the front of the stage to others and to the gullible ones. You don't display much sociability. When you are nice, it is because you are looking for flaws. This Mercury-Pluto dissonance mingles unconscious fantasies with reality. When it is kept under control, this aspect becomes an unparalleled source of discernment. To that aim, you must overcome your strong tendency for provocations. It is certainly amusing to play destabilizing games but it may also be dangerous. Keep this treatment for your opponents only.

★★★★★ Moon bi-quintile Mercury, orb -0° 54'

Curiosity is part of your nature. You perceive everything with sharp acuity. You increase your attempts to establish connections and to exchange opinions and information, particularly when you are in a familiar and intimate context. When this configuration is well integrated, it underlines the multi-faceted nature of the mobility that defines your behaviour and your living conditions and endows you with strong adaptation abilities. You also show a remarkable gift for improvisation and you pick up the quality of the atmosphere so swiftly that you get off any tricky situations. However, you must keep your adaptation capacity under control because when it is overdeveloped, it may become an agent for instability.

Your Goals, Motivations, Career, and Destiny

Your Sun is posited in the 3rd House

Your intellectual mobility and your curiosity are remarkable, Rafael Correa. Your entire will is at the service of your inextinguishable thirst for knowledge and contacts. You are interested in communication and in occupations where you can move and express your ideas, such as journalism, literature or writings

in general, trade, recruitment, laws etc.

Early in your life, you notice that your skills as a speaker and a mediator are impressive. As you mature, you can use these assets to carry your professional or personal projects through a successful conclusion. You like to move about in the proper sense and to visit your numerous contacts, in order to embrace and fulfil your need for communication.

You may play a rewarding role towards your siblings, if you have any. Or a sibling plays an important part in your destiny.

When things do not follow the course you want them to, because of your propensity to communicate too much and to move frenetically, you may be subject to conflicts within your neighbourhood and your family (again, as always...). You may have accidents when you are paying your visits and you may also be the target of your colleagues' harsh criticisms.

The ruler of your chart is in the 7th House

The ruler of the Ascendant, also referred to as the chart ruler as explained in a previous chapter, is also posited in one of the twelve Houses of the chart. Just like the Sun in his House, the ruler of the Ascendant provides certain abilities, or it makes you appreciate more keenly certain areas of life.

The ruler of your chart is in the 7th House, Rafael Correa, the House of exchanges with people, of contracts, and of marriage. You may have the talent to smooth ruffled feathers, to behave with diplomacy so as to nurture good relations, to enter into partnerships, and to join any association.

Aspects influencing your ambitions

Regarding your destiny or your career, the following aspects of your natal chart allow to fine-tune what has just been said above:

★★★★★ Neptune conjunction Midheaven, orb 1° 27'

Neptune is in conjunction with your Midheaven, Rafael Correa. This aspect indicates that your vision of your career and your destiny is idealistic. You seem to adhere to some sort of poetic - and happy - fatality regarding huge changes or your progression towards success. As a consequence, achievements may be beyond your... will. If your professional or social circle fits your ideals, it is very likely that you experience brilliant successes in a sort of euphoria and a feeling of fusion with the world. Sometimes, this aspect indicates that your career is of a Neptunian nature, meaning that it is related to the sea, water, the world of ambiances (night-clubs, show-business, revels, etc.)

★★★★★ Moon sextile Midheaven, orb 0° 47'

Your sensitivity and your emotions are in line with your goal and your ambitions, Rafael Correa. You do not need to curb your temper lest other people have a wrong perception of you. Indeed, by being your true self, very simply, your social ascent will unfold naturally.

★★★☆☆ Saturn square Midheaven, orb 3° 59'

Saturn is in dissonance with your Midheaven, Rafael Correa. Of course, nothing really serious is to be feared. It is just that sometimes, you feel that an unfair slowness keeps on delaying the achievements you deem that you deserve right now. You must work twice as hard to climb up the rungs of success, and

above all, you must not get disheartened. Effort is one of the values you must work on, and it is a punishment by no means. It is obvious that your goals are achievable, but you must remain on the right track and show perseverance. That's all!

★★★★★ Sun inconjunction Neptune, orb 0° 43'

If this Sun-Neptune dissonance is not well integrated, it may bring about confusions and errors of judgment. It is the signature for Don Quixote in search of chimera, pursuing impossible dreams. Your intuitions may lead to an incorrect estimation of facts. Bohemian life is certainly pleasant. But it is often necessary to remain realistic, lest to be exposed to delusions. Carelessness and letting-go is not suitable. In order to properly integrate this aspect, you must control the possible drift of a wandering and fabulous sensitivity. This aspect favours poetic and romantic inspiration. But you must not let it rule your concrete actions. It is important to allow your intuitive capacities to be fully expressed while keeping a lucid mind, simultaneously.

★★★★★ Sun inconjunction Midheaven, orb -0° 43'

What you really want to do, or the way you consider everything, may be in contradiction with your professional goals, Rafael Correa. You may experience conflicts of authority, or a few hesitations over how to manage your career. In any case, you must display flexibility and water down your wine if you want to remain on the right track and achieve professional success. It is the only solution to this discrepancy between the Sun and your Midheaven.

★★★★★ Sun bi-quintile Pluto, orb 0° 14'

This harmonious Sun-Pluto aspect indicates an exemplary clear-sighted mind. Without destabilizing your appearances or your personality mask, Pluto makes you aware of your subjective and questionable character, as well as of your manner. You never take yourself completely seriously. You have a good grasp of human nature's complex games, without gullibility, without excessive simplification. Because you can perceive hidden elements underlying any situation better than anyone else, you are acknowledged as perspicacious. This aspect allows you to distance yourself from difficult circumstances and to remain impassive when you must overcome pitfalls.

★★★★★ Sun sesqui-quadrate Uranus, orb 0° 5'

This Sun-Uranus dissonance indicates a dazzling will to be the centre of attention and to proclaim your specificity, by all means. This aspect belongs to the rebel and the revolutionary restive to all forms of authority and of model. To balance this interpretation, the strong need for autonomy bordering on frenzied individualism must be highlighted. You allow nothing or no one to hinder your chosen line of conduct. Obviously, your attitudes are inflexible. You prefer to continue to the bitter end, even when you are wrong, rather than to be more open to people's ideas. Tyrannical attitudes often turn against the perpetrator... However, this configuration is a powerful agent for creativity, provided your hothead and extremist nature is kept under control.

★★★★★ Jupiter sesqui-quadrate Midheaven, orb -0° 59'

Jupiter, the planet of law and social achievement, is in mild dissonance with your Midheaven, Rafael Correa. You may experience difficulties in climbing up the steps of your social status, or in having your true worth fully recognised. There is definitely nothing serious to worry about. It is up to you to remain self-confident and not to be too impatient. With effort and perseverance, you can reach serenely the goals you have set for yourself. The only mistake you must avoid with this configuration is to jump the gun and to forget hierarchy and laws, or just to underestimate the work you must put in to that end.

★★★★★ Sun sextile Saturn, orb -4° 43'

This aspect indicates a firm and discreet will, a rigorous and objective character. You are clear-sighted, particularly in difficult situations. You enjoy the moments of calm and solitude during which you can review your life at will. Your judgments are enduring and often extremist. You are outraged by injustice and inconsistency. When a problem arises, you do not take the easy way out with short-term solutions, on the contrary, you strive to solve the issue thoroughly. Better than anyone else, you challenge yourself, you review your choices and your attitudes. This is the reason why you are capable of handling crises and of overcoming any obstacle that requires an in-depth and relevant response. You may lack spontaneity but your behaviour reveals your wisdom. When you are facing an issue, you put forward the good question, to others, but also to yourself.

★★★★★ Venus trine Midheaven, orb -7° 51'

In your natal chart, Rafael Correa, sweet Venus is in soft aspect with your Midheaven. It means that your natural charm and the way you express your feelings are appreciated in society. Usually, this configuration speeds up the achievement of your professional goals, or in any case, of a certain social status. A female - or females - may prove helpful for your career or your destiny.

Your Assets and Your Part of Joviality

The planet of Greater Fortune in this sign favours self-confidence, Rafael Correa, as well as the capacity to be enthused and to show your warmth. Your most valuable asset is your ability to easily express your fieriness and your ardour for the implementation of your projects. However, the danger is that your self-assurance may become an agent for rebellion or for indiscipline, in which case, it would play out against your interests.

Rafael Correa, this Jupiter's position is a heaven-sent present. It increases your earning power and may turn you into a persistent, obstinate and greedy person. You may also be at the same time sentimental and loyal. So, sometimes, material luck and love do work in unison!

The planet Jupiter symbolizes expansion, broadness and generosity. Jupiter is associated with the functions of synthesis, enthusiasm and optimism. In your natal chart, his house position is more important than his sign position because, like Saturn, Uranus, Neptune and Pluto, he is a slow planet. Many people born in the same period have Jupiter in the same sign. This is the reason why the sign occupied here is less meaningful than when it is occupied by the so-called fast planets, i.e. the Sun, the Moon, Mercury, Venus and Mars. Therefore, some caution is to be exercised as you read what follows.

Jupiter in Aries amplifies your tendency to charge ahead and your self-assertiveness. You have leadership qualities, you are optimistic and you can mix the boldness with the will to succeed that are specific to Aries. Management ability, leadership and independence: your enthusiasm is a real asset for your life and for your charm!

Your Serious Side

Solemnity and concentration are at the service of your projects and your altruistic ideals. To the

detriment of your own individuality, you become demanding with time, and you learn to better define the human values that are really important to you. Struggling in order to better assert your individual qualities can be highly profitable.

Solemnity, seriousness and discipline are your keywords, Rafael Correa. It is difficult for you to relax, and it is most likely that at the beginning of your life, you are shy, quite introspective, and distant. You may be worried even though you have no reasons to do so. Your doubts may be overwhelming to the extent that they affect your vitality.

As time goes by, thanks to your strong will, your serious side becomes an asset for your success. You learn spontaneity, risk-taking, and lightness, and you are less concerned with the image you project because, in your heart of hearts, there already are hindsight, solemnity, and some sort of wisdom!

The planet Saturn symbolizes contraction, effort, time, limitation and concentration. Saturn eliminates anything that is not authentic, sooner or later. It is impossible to cheat him as he gives an irresistible desire to form a coherent whole with oneself, in responsible and wise ways. He is the great purifier. He represents our limitations but also our truth. In your natal chart, the house position where Saturn is posited is more important than his sign position because, like Jupiter, Uranus, Neptune and Pluto, he is a slow planet. Many people born in the same period have Saturn in the same sign. This is the reason why the sign occupied here is less meaningful than when it is occupied by the so-called fast planets, i.e. the Sun, the Moon, Mercury, Venus and Mars. Therefore, some caution is to be exercised as you read what follows.

Saturn in Aquarius endows you with the capacity to deliver in collective areas, humanitarian causes or avant-gardist projects. Your sensitivity is withdrawn but it is offset by your ability to handle human relationships in a daring and efficient way, which allows you to achieve your goals for the sake of a cause.

A Few Special Points

Your Uniqueness and Your Utopias

Your anticonformism regarding relationships prompts you to meet with very original people, and sometimes quite special ones. You may take the initiative to brutally and unexpectedly break up with persons whom you find too ordinary or too conventional.

Your thirst for freedom creates a very strong individual approach in your way of communicating and of handling relationships; you may distrust associations or marriage because, as soon as you start to feel imprisoned or not free enough, you run away without warning!

Actually, you are very demanding, and you are not aware that, most of the times, this is the very cause of your behavioural reversals. The solution is to move around with unusual people, it's as simple as that! Cohabitation is often advisable, except if your freedom and your curiosity are already satisfied on a daily basis.

Your Inspiration and Your Illusions

This configuration indicates a significant probability that your professional destiny – even your general destiny – is linked to collective movements that are beyond you. They may constitute good opportunities to earn your marshal's baton.

Your certainties may be influenced by trends or by your osmosis with collective ideas, often because you are very sensitive to the "spirit of the times". The other side of the coin is that you may become only a representation of a collective ideal, or its victim, and be exposed to scandal or deception.

You have good predispositions for music, comedy and for anything that allows you to quench your thirst for emotions and fusion with the external world and with an audience.

Your Passion and Your Authority

You have a natural strong authority as soon as you are with other people, and you tend to consider relationships as fights that allow you to display your might and your influence, insidiously but obviously, particularly for... the others!

Your contacts and your associations require so much emotional intensity that people who consider that relationships should be light and flowing may be frightened or disconcerted.

Your marriage is probably the all-or-nothing type. It is a passionate and intensely close relationship, an agent for your couple's transformation, with you in the domineering role. It may also lead to disintegration before it starts afresh towards new horizons.

Your Isolated Planets

In general, the ten planets of the chart are connected to other planets by major or minor astrological aspects. It is owing to those ties that the planets' energies can manifest in the chart owner's personality and play out within safeguards according to a specific tonality.

It seldom happens that in a natal chart, a planet is totally disconnected from the nine other planets.

Astrologers have observed that when such a case occurs, the person feels the energy of the unaspected planet in quite a singular way, very jerky and powerful at the same time. Thus, for instance, the famed astrologer Jean-Baptiste Morin de Villefranche wrote that "an unaspected planet heralds that something strange or extraordinary will take place regarding the meanings of the house in which the said planet is posited" (source : l'astrologie selon Morin).

Rules for detecting an unaspected planet: among all the testimonies that we have reviewed to this day, based on our experience, we tend to agree with American astrologer Janis Huntley who accepts seven aspects, which involve the zodiacal twelve sections of 30 degrees. The aspects to be considered are the conjunction (0 degree, cooperation or tension), the semi-sextile (30 degrees), the sextile and the trine (60 and 120 degrees respectively, aspects of cooperation), the square and the opposition (90 and 180 degrees respectively, tensed aspects), and the quincunx (150 degrees, slightly tensed). In this detection, the

chart's angles are not taken into account.

In any case, it is important to remember that an isolated planet clearly expresses its influence when it is a personal planet. Thus, when the Sun, the Moon, Mercury, Venus, or Mars is isolated, it is certain that the effects described by Jean-Baptiste Morin de Villefranche will become manifest. As for Jupiter, Saturn, Uranus, Neptune, and Pluto, one must be cautious because the volume of cases documented is not yet large enough.

Your chart has no isolated planet, and this particular case does not apply to you.

Annex 1: Your Minor Dominants

The five following dominants are less significant than those described at the beginning of your report. They may not be strongly felt. In some cases, they add several minor details to the analysis of your character, but they are rather for curiosity purposes. It is not necessary to take them into account when you first read your portrait.

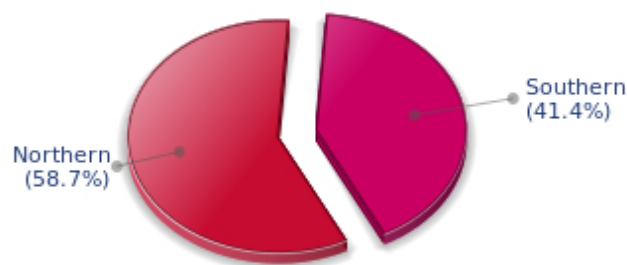
Your Planetary Repartitions: Northern, Southern, Eastern and Western Hemispheres

The axis linking the 1st house's cuspid (the Ascendant) to the 7th house's cuspid - the Descendant - divides the zodiac into two bowls, a superior bowl, in the South, and an inferior bowl in the North. Quoting an expression by the famous American astrologer Rudhyar, the Southern part and the Northern part correspond to two functions: "being" and "doing". Other concepts are also associated with this North and South distribution, such as introversion - Northern hemisphere - and extraversion - Southern hemisphere - being or appearances, inner life or external life, reflection or action, dreaming one's life or living one's dreams, the abstract or the concrete, backstage or limelight.

This is not about determination but about personal inclination: thus, some people will be thrown into public life despite a prominent Northern hemisphere. If this happens, however, it will not be due to their will, their taste or their deep nature. Conversely, a prominent Southern hemisphere will not bring about a famous destiny to its owner, even if he tends to turn the spotlight on himself, or if he looks for a more active life. It is a matter of deep nature and natural inclination. Of course, none of the typologies is "superior" to another.

In your birth chart, Rafael Correa, the ten main planets are distributed as follows:

Your Northern and Southern Hemispheres



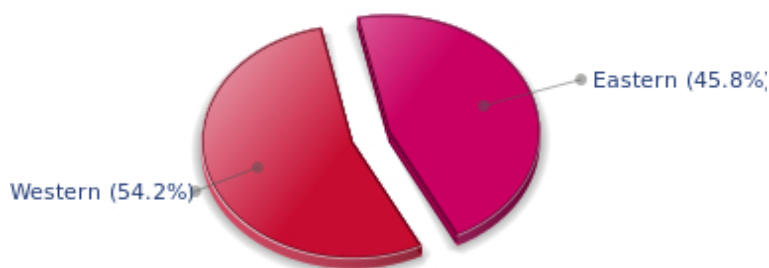
Rafael Correa, the planetary elements of your chart are well balanced between the North and South hemispheres. As a result, your public destiny and your inner life are harmonious, and there is no conflict between your actions and your thoughts. Your private and public spheres coexist in harmony and naturally match your temperament.

The birth chart is divided into two other parts, Eastern and Western, by the axis linking the Midheaven to the Imum Coeli.

The Eastern part, on the Ascendant side, shows the person's ego, will, magnetism, and vitality, whereas the Western part, on the Descendant side, symbolizes other people, communication, relationships and their influence, as well as flexibility and adaptability.

Rafael Correa, here is the planetary repartition in your Eastern and your Western hemispheres:

Your Eastern and Western Hemisphere:

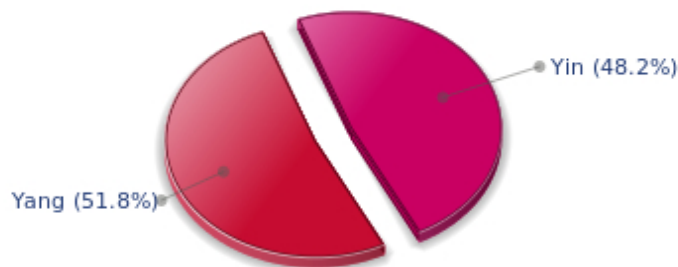


Rafael Correa, the East and West sides are well balanced in your chart. This means that you are not too determined or authoritarian, and that you are neither impressionable nor fragile. You are capable of taking decisions, in full awareness, without anyone's help when circumstances so require. However, you have no problem taking your entourage's viewpoints into consideration, with tact and intelligence.

Your Yin and Yang Polarity

The twelve signs are divided into two polarities, called active or passive, or sometimes masculine and feminine, positive and negative, Yang and Yin. This classification corresponds to two quite distinct tonalities, the first one bringing extraversion, action, self-confidence and dynamism, the second one, introversion, reactivity, reflection and caution. None is superior to the other, each group has its own assets and shortcomings. Odd signs - Aries, Gemini, Leo, Libra, Sagittarius and Aquarius - belong to the first group, whereas even signs - Taurus, Cancer, Virgo, Scorpio, Capricorn and Pisces - belong to the second group.

Your Yin and Yang Polarity



According to the disposition and qualities of your planets and angles, you are rather influenced by Yang energy, the active polarity, Rafael Correa: more concerned about actions than reflection, you sometimes rush without standing back and without the deepness that is needed. However, your spontaneity prompts you to take fresh starts, even after repeated failures caused by your rashness.

Your Houses' Accentuations

Houses are split up into three groups: angular, succedent and cadent.

The first ones are the most important ones, the most "noticeable" and energetic houses. They are the 1st, 4th, 7th and 10th houses. Their cuspides correspond to four famous angles: Ascendant for the 1st house, Imum Coeli for the 4th house, Descendant, opposite the Ascendant, for the 7th house and Midheaven for the 10th house, opposite the Imum Coeli.

Planets are evaluated according to a whole set of criteria that includes comprehensive Western astrology rules. At their turn, planets emphasize specific types of houses, signs, repartitions etc., as previously explained.

Your Houses' Accentuations



Your angular houses, namely, the 1st, 4th, 7th and 10th houses, are very emphasized in your chart, Rafael

Correa: according to the Tradition, they are the strongest and most dynamic houses. Should the rest of your chart concur, angular houses suggest that you are an enterprising, energetic and assertive man. Indeed, angular houses are said to generate impulsions and to give a powerful and domineering personality.

Unusual fates are often linked to a predominance of angular houses, but this is only a partial indication...

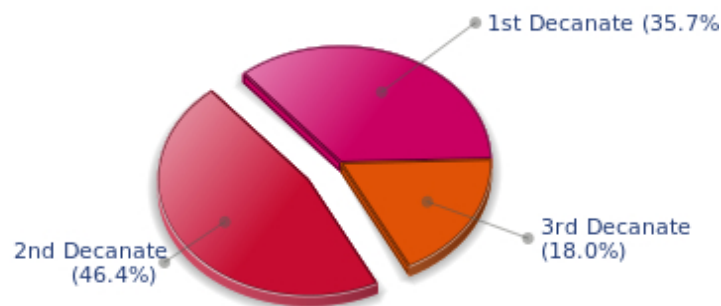
Your Esoteric Decanates

Each sign contains 30 degrees and can be divided into three equal parts: the decanates. The Tradition indicates that specific meanings can be associated to each of the three decanates. Their sphere of activity is usually limited to the Sun sign, however, it is even more interesting to observe the distribution of all the planets in the chart to get an idea of the respective importance of the three decanates, which can complement the description of the personality.

These meanings must be considered with the greatest caution. Indeed, they are minor characteristics that can only underline other outstanding traits of character.

Traditionally, the first decanate highlights the characteristics of the sign where a planet is located. The two other decanates correspond to sub-dominant planets, depending on the nature of each sign. This system leads to a multiplication of meanings and it is impossible to have a clear understanding: here, we prefer to give only the meaning of one decanate in comparison with the other two, within the birth chart as a whole. Again, the greatest caution is needed with regard to this minor indication as it is not always reliable: it is not essential that you read these texts in the beginning. You can get back to them later on, once you have read more important interpretations

Your Esoteric Decanates



The second decanate, which means the part between 10° and 20° of any zodiacal sign, prevails in your natal chart, Rafael Correa: these 10 zodiacal degrees emphasize logical thought and mental values. Therefore, you may be drawn to some kind of scientific activities, research, writing or any sort of expression where you have to... think a lot.

Annex 2: Karmic Study

The karmic theme is a good complement to the psychological portrait, or natal chart. This analysis is based on the positions of the Lunar Nodes, the Black Moon and the Part of Fortune: they are also called fictitious points and describe the spiritual purpose of your destiny. Because there is in all of us an experience and a quest, our life is an evolutionary journey... provided that we head towards the right direction, of course! Indian astrologers highly prize the Nodes axis (North Node and South Node). It is the Ariadne's thread that we are invited to follow. The Black Moon indicates the sector where we are most likely to transform or to transcend, whereas the Part of Fortune points out the area where we can easily express our specificity.

The Lunar Nodes: a spiritual path

Lunar Nodes have their roots in the Indian tradition and they are based on a simple concept: each of us have a mission of their own, here on earth, a destiny, a course. According to the Indian philosophy, life is a school: the nodal axis describes our past experiences (South Node, our karma, our spiritual inheritance or our previous lives), and our aims on earth (North Node, our Dharma, the purpose of our current incarnation). This is the reason why the study of the lunar nodes is called "Karmic astrology". Here, we shall not step into hypothetical past lives. Wherever our current trends may come from, all that really matters is that we become aware of the purpose of our life, its finality and our dharma. We are likely to understand our life purpose around the age of 37, when the Lunar Nodes return to their natal position.

Your entourage respects your manner: you belong to the category of persons who arouse their close friends' consideration because of their straightforward, sometimes rigid attitude. The concern that you must "maintain your rank" may increase the severity of your judgments and lead to intransigence. You are sensitive to the prestige of your social standing and you show an acute sense of responsibilities since your youth. You become an adult early in life and you always avoid dependency. Your life's challenge is to learn to handle your intimate and family life as well as you manage your career. In the private sphere, you may undergo difficulties: you are a real loner and you turn down any help and affection offered by your entourage. You deny yourself the sweetness of a comfortable and reassuring home. However, as time goes by, you will overcome your reluctance and you will allow what you most value, deep down: love and tenderness to blossom within a privileged relationship, within a family...

A part of you is bohemian: you may shirk realities (at least during the first years of adulthood) and you keep your distance from the constraints of this world! However, life reminds you of them... As years go by, you show more pragmatism. Of course, you must keep your assets: a sharp intuition of people and things, a profitable detachment that allows you to cope with daily petty things. But you must also control the vagaries of life that may fall into the bad side of a "bohemian life" if you are not careful. The consequences may be setbacks and delusions that will cease only when you become aware of realities. As you progress, you may be a therapist who heals the body (a medical occupation)... or the soul because you are altruistic and you know how to listen.

Lilith or the Dark Moon

The Black Moon is the spark of refusal and distance that is dormant in all of us. Depending on the sign where she is found in your chart, she highlights the desire to transform and to sublimate a part of your life. The Black Moon is unfathomable and mysterious. She gives a different dimension to the sector she touches. Her manifestations are subtle; nonetheless, she is powerful, implacable, demanding to the extreme... The Black Moon is also called Lilith. She is the inner flame of your heroism and

insubordination.

You decidedly assert yourself as a person made of desires, love and the absolute. If this configuration is not well controlled enough, your thirst for timeless relationships may hamper simple, natural and obvious affairs. You may reject persons whose attitudes do not perfectly live up to your expectations. However, as you keep on looking for your muse, it is very likely that you will find the person to whom fate has relentlessly tied you.

The notion of freedom takes a special meaning: to be free does not only mean being able to move as you please here and there, nor does it mean having a few hours of leisure available. Above all, it means being able to lead a spiritual quest, to access a different dimension in life: to encounter, to travel, to love and to never be hampered by contingencies, never be slowed down by daily life. That'll take some doing! The comfortable routine of the contemporary world, in this regard, puts you off.

The Part of Fortune in House

The Part of Fortune is a very ancient fictitious point that depends on the lunar phase at the time of birth. The astrological house tenanted is particularly strengthened. In your chart, the Part of Fortune is in the 8th house: you need to constantly transform your life, to evolve and to shed your skin. You do not hesitate to regularly question the basis of your manner. Everything is death and revival and the wheel of life is ruthless: what was still yours yesterday will be a mere souvenir tomorrow... Your wealth is the know-how you demonstrate when you cope with changes imposed by events, while always remaining true to yourself.

Retrograde Planets

The karmic tradition insists on the issues related to the so-called retrograde planets. They are considered to be the inheritance of a past that was not well experienced, a sort of unfinished business. The interpretations of the retrogradation may seem negative or excessive to you. However, you may relate to a scenario that you have often and repeatedly experienced... as if you underwent several setbacks that all have the same cause. Until the day you become aware of it and you can free yourself from it! Through the slow integration of these planetary energies, you will be able to overcome your difficulties and to pay your karmic debt. Actually, each retrograde planet highlights an opportunity for evolution. Nothing can be achieved without the will to grow spiritually and to defeat your own demons.

Uranus was retrograding on the day of your birth: you have the soul of a rebel and your behaviour may often be tyrannical or extremist. Your manner has brought you setbacks. You lack the flexibility that spares you the pain of forcing your ways through events. The danger may be that you get trapped into rigid patterns and into personal logics incompatible with others'. This is precisely what your life's lesson is about: as years go by, your judgments are more qualified and your attitudes become less cut-and-dried, less stubborn. You must lose the essentially individualistic character of your childhood and be more open to other people's ideas and problems. In other words, a path of love. Without losing your remarkable resolution, you must practice some form of renunciation and be sensitive to various logics that constitute the wealth of your social life.

Neptune retrograding concerns spirituality. You may have expressed early in life a few reluctances about the subtle world of faith. You may have ignored destiny's signs and winks and you preferred to stick to your certainties, to a rigorous and objective control of your life. You dread your own aspirations and you readily trust others': this causes a lack of autonomy and the feeling that you may not receive as much as

you give. However, several delusions teach you that you must relativize your calculating and methodical attitude and open up to the irrationality of love in order to find an inner and more spiritual progression. Embracing the invisible is a process that unfolds as years and experiences go by. Your own generosity increases as you become aware of your entourage's generosity.

Pluto retrograde suggests power issues and mishandled relations: for you, everything comes down to power struggles, submission and domination, Machiavellian manoeuvres, including within your couple... The results are complex behaviours and an obsession for the power to influence people. Yet, life teaches that you must simplify your relations and adopt more transparent attitudes and healthier desires... As years go by, you will tend towards more simplicity and you will slowly discover that human energy can, and must, be at the service of the good, or of well being, in compliance with our individual progression.

N.B: modern astrology attaches less and less importance to the principles of retrograding planets.

Conclusion

A few remarks are needed here in order to allow you to fully take advantage of your astrological portrait: firstly, do not forget that a birth chart is also a photograph of the sky at birth and a structure that not only contains the personality's characteristics, but also its potential evolution.

We all know that, in real life, people begin to know themselves when they are in their forties, or even later. Likewise, several traits of character in a portrait may seem surprising: in most cases, it means that such features are not yet developed.

Some personalities reveal themselves late in life, whereas others are more precocious. It must be remembered that psychological structures are in a state of continuous evolution because they are influenced by unfolding events and gradual maturity. We can never underline strongly enough the "mobile" nature of the personality, throughout a lifetime.

On the other hand, it is difficult to discriminate what is "already present" at this moment in your life when you are reading your chart's interpretation, from what will appear later in the logic of your evolution: you must sort out all the pieces of information provided and, in most cases, you will see that your astrological portrait is helpful for your endeavours to know yourself better.

Finally, several readings of an astrological portrait are usually necessary in order to absorb all its different meanings and to evaluate the relevance of each character trait.

In any case, better self-knowledge obviously contributes to faster personal blossoming, and it is undoubtedly one of astrology's major roles: contributing to know oneself better, in order to improve more rapidly, to deal with one's weaknesses and to avoid its drawbacks, and to take advantage of one's assets as efficiently as possible.
