

**Penélope Cruz's
Astrological Portrait**





Penélope Cruz's Astrological Portrait



Introduction	2
Your Planets, Houses, Aspects, and Natal Chart	4
Preamble	7
Your Planetary Repartitions	8
Your Dominant Modes and Elements	9
Your Dominants: Planets, Signs and Houses	10
Your Style, Behaviour, and Peculiarities	14
Your Sensitivity	18
Your Affectivity	19
The Way You Take Action and Your Sexuality	20
Your Intellect and Your Communication Style	22
Your Goals, Motivations, Career, and Destiny	23
Your Assets and Your Part of Joviality	25
Your Serious Side	26
A Few Special Points	26
Your Isolated Planets	27
Annex 1: Your Minor Dominants	29
Annex 2: Karmic Study	33
Conclusion	36



Penélope Cruz's Astrological Portrait

Introduction

To fully benefit from this portrait, we suggest that you read its introduction and its preamble carefully, and then that to take the time to soak up the interpretations of each chapter. Given the large number of texts, which mirrors the human being's complexity, you may need to go through the contents several times, so as to get a good grasp of their meaning and to know yourself better. This will reward your patience.

The purpose of this report is to describe your psychological portrait and to highlight the most fundamental features on the personal area. The report begins with the analysis of your planetary dominants and outlines your personality's general traits before going into further detail. Minor dominants are analysed at the end of Annex 1, for purposes of clarity. Your report then delineates the various facets of your personality:

In general, even when relationships are not involved, we express ourselves and we feel according to our character and our personal motivations: this is indicated by the Ascendant and the Sun sign which both give details on the way we function. They shed a tremendously important light which allows to figure out your personality. Here, we describe your Sun sign (your inner self), your Ascendant (your behaviour as seen by others), and the ruler of the Ascendant (interesting additional pieces of information about the style of your personality). These descriptions alone cover nearly a third or a half of your psychological signature, depending on your natal chart characteristics.

Then, we address your sensitivity, or in other words, the way you receive things and how you express your emotions ; it works as a constant filter for all your exchanges, even when it becomes a more secondary element in your amorous relationship, because at that moment, affectivity prevails. Sensitivity is the way you perceive things, it is your radar, your daily mood, and at the same time, it indicates how you react to your entourage, on a daily basis. It is what others immediately see of you. In the second paragraph, we explain in which areas of life your sensitivity and your emotions are strongest, therefore, where you are most vulnerable.

After this, it is your affectivity, the way you love and how you charm, that comes into play as soon as you fall in love: the first part indicates its basic structure or its main form. The second part describes the areas where it is best expressed and how you display it, according to your personality.

A third fundamental area deals with your mode of action and your sexuality: how you behave, how you manage to obtain what you want, what kind of desires you have. There are twelve possibilities, very

different from one another. The study discloses the specific one that applies to you. In the second paragraph, we explain in which life areas you may most efficiently take advantage of your capacity for action and for conquest.

Your ways of communicating and of thinking are obviously among the major elements that must be integrated into the delineation and the description of your personality. Indeed, they influence your general behaviour and may modify or enhance the image your project (for instance, extraversion may “compensate” a weak affectivity, but a huge number of cases are possible). An additional chapter indicates the favourite areas where you enjoy communicating, thinking and meeting with people.

Besides, we analyze an even more personal aspect that is important to define and understand what may occur within your couple: each of us have a centre of interest, a privileged manner to be fulfilled or to achieve our destiny; this main motivation is indicated by the positions of your Sun and your chart ruler in the astrological houses and we provide you with its detailed description.

A natal chart contains the potential for specific fulfilment and a whole range of assets, protections and qualities. How does the lucky factor manifest in your personality? In which area can you best exploit your qualities? The answers are precisely revealed to you in this chapter.

On the other hand, we all feel in us a part of vulnerability, doubts and fears. How does this part of solemnity or serious side play out? How is it possible to handle it in order to evolve and to get rid of useless elements? All this information is provided to you in these two paragraphs.

Then, you can discover three additional traits of your personality that must be considered as secondary ones. They deal with your predispositions, which means that they need to be triggered by external events because they are not influenced by your will; let's call it a part of fate. Please, bear in mind that your destiny can unfold only in accordance with what you are: therefore, even if they belong to your more unconscious self, these characteristics are parts of you, definitely.

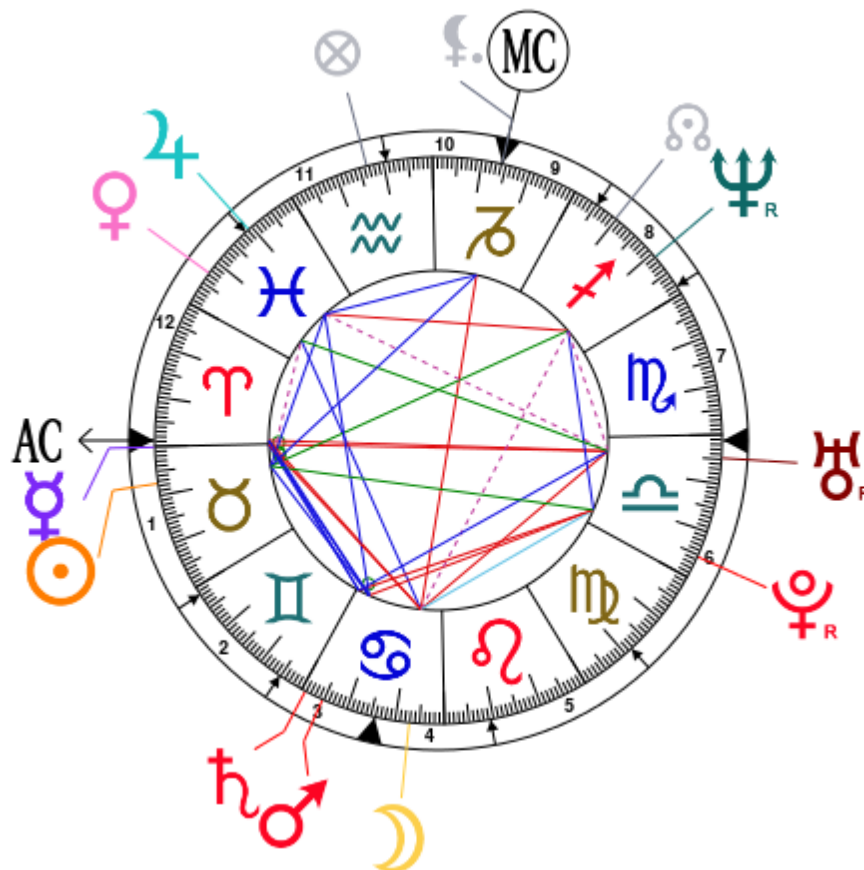
The karmic chart complements the psychological portrait or natal chart. It is based on the positions of the Lunar Nodes, the Black Moon, and the Part of Fortune. These elements of the chart, sometimes referred to as fictitious points, provide information about the spiritual meaning of your destiny. Owing to the fact that we all have in us acquired knowledge and the urge to go on a quest, our life is an evolutionary journey... However, these texts must be read with great caution: this is the reason why you will find this analysis in the Annex 2 of your report.

Your Planets, Houses, Aspects, and Natal Chart

Penélope Cruz, born April 28, 1974, at 07:00 AM, Alcobendas (Madrid), Spain [3.38W ; 40.32N ; 2E00]

Natal Planets			In House	Natal Houses (Placidus)		
☉ Sun	7°32'	♉ Taurus	House 1	House 1	28°48'	♈ Aries
☾ Moon	22°53'	♋ Cancer	House 4	House 2	1°42'	♊ Gemini
☿ Mercury	0°09'	♉ Taurus	House 1	House 3	24°50'	♊ Gemini
♀ Venus	22°42'	♋ Pisces	House 12	House 4	15°49'	♋ Cancer
♂ Mars	4°42'	♋ Cancer	House 3	House 5	9°22'	♌ Leo
♃ Jupiter	10°47'	♋ Pisces	House 12	House 6	11°35'	♍ Virgo
♄ Saturn	0°50'	♋ Cancer	House 3	House 7	28°48'	♎ Libra
♅ Uranus	25°14' R	♎ Libra	House 6	House 8	1°42'	♐ Sagittarius
♆ Neptune	9°03' R	♐ Sagittarius	House 8	House 9	24°50'	♐ Sagittarius
♇ Pluto	4°38' R	♎ Libra	House 6	House 10	15°49'	♑ Capricorn
♁ Node	20°11'	♐ Sagittarius	House 8	House 11	9°22'	♒ Aquarius
♁ Lilith	15°52'	♑ Capricorn	House 10	House 12	11°35'	♋ Pisces
AS AS	28°48'	♈ Aries				
MC MC	15°49'	♑ Capricorn				

In keeping with the common practice, we consider that a planet posited within 1 degree of the next house belongs to that house. We allow an orb of 2 degrees for the ASC and the MC.



List of Your Active Planetary Aspects

Please find below the list of all the active inter-aspects which are interpreted in this report, in addition to your planets in sign, in house, and all your planetary dominants. Since the aspects between slow-moving planets are of a collective nature, they are not displayed, in compliance with our interpretation rules.

- ★★★★★ Sun conjunction Mercury, orb 7° 23'
- ★★★☆☆ Sun semi-square Venus, orb -0° 09'
- ★★★★★ Sun sextile Mars, orb -2° 5'
- ★★★★★ Sun sextile Jupiter, orb -3° 15'
- ★★★☆☆ Sun inconjunction Neptune, orb -1° 3'
- ★★★☆☆ Sun inconjunction Pluto, orb -2° 54'
- ★★★★★ Sun conjunction Ascendant, orb 8° 44'
- ★★★★★ Sun trine Midheaven, orb -8° 16'
- ★★★☆☆ Moon square Mercury, orb -7° 16'
- ★★★★★ Moon trine Venus, orb 0° 1'
- ★★★☆☆ Moon square Uranus, orb 2° 21'
- ★★★☆☆ Moon sesqui-quadrate Neptune, orb 1° 1'
- ★★★★★ Moon quintile Pluto, orb -0° 14'
- ★★★☆☆ Moon square Ascendant, orb -5° 55'
- ★★★★★ Moon opposite Midheaven, orb -7° 03'
- ★★★★★ Mercury sextile Mars, orb 4° 32'
- ★★★★★ Mercury sextile Saturn, orb 0° 4'
- ★★★☆☆ Mercury opposite Uranus, orb -4° 54'
- ★★★★★ Mercury conjunction Ascendant, orb 1° 21'
- ★★★☆☆ Venus inconjunction Uranus, orb -2° 32'
- ★★★★★ Mars trine Jupiter, orb -6° 05'
- ★★★★★ Mars conjunction Saturn, orb 3° 51'
- ★★★☆☆ Mars square Pluto, orb -0° 03'
- ★★★★★ Mars sextile Ascendant, orb 5° 53'
- ★★★★★ Jupiter sextile Midheaven, orb -5° 01'
- ★★★★★ Saturn sextile Ascendant, orb 2° 01'
- ★★★★★ Uranus opposite Ascendant, orb -3° 33'

Meaning of Stars

Stars indicate the strength of the aspects. Two solid coloured stars (there are half-stars also), mean that the aspect is powerful enough to be noticed at the first reading.

We strongly advise that you read the paragraphs displaying less than two stars later on, after you have absorbed the full import of the other texts.

The yellow colour indicates a soothing and conciliating aspect, and the red colour, a dynamic and tense aspect. The red aspects enable you to evolve, to take action, and to learn to turn your "weaknesses" into assets through your life experiences. The yellow aspects are innate strengths on which you rely in order to grow better with the former...

Preamble

When interpreting a natal chart, the best method is to start gradually from general features to specific ones. Thus, there is usually a plan to be followed, from the overall analysis of the chart and its structure, to the description of its different character traits.

In the first part, an overall analysis of the chart enables us to figure out the personality's main features and to emphasize several points that are confirmed or not in the detailed analysis: in any case, those general traits are taken into account. Human personality is an infinitely intricate entity and describing it is a complex task. Claiming to rapidly summarize it is illusory, although it does not mean that it is an impossible challenge. It is essential to read a natal chart several times in order to absorb all its different meanings and to grasp all this complexity. But the exercise is worthwhile.

In brief, a natal chart is composed of ten planets: two luminaries, the Sun and the Moon, three fast-moving or individual planets, Mercury, Venus and Mars, two slow-moving planets, Jupiter and Saturn, and three very slow-moving planets, Uranus, Neptune and Pluto. Additional secondary elements are: the Lunar Nodes, the Dark Moon or Lilith, Chiron and other minor objects. They are all posited on the Zodiac wheel consisting of twelve signs, from Aries to Pisces, and divided into twelve astrological houses.

The first step is to evaluate the importance of each planet. This is what we call identifying the dominant planets. This process obeys rules that depend on the astrologer's sensitivity and experience but it also has precise and steady bases: thus, we can take into account the parameters of a planet's activity (the number of active aspects a planet forms, the importance of each aspect according to its nature and its exactness), angularity parameters; (proximity to the four angles, Ascendant, Midheaven, Descendant and Imum Coeli or Nadir, all of them being evaluated numerically, according to the kind of angle and the planet-angle distance) and quality parameters (rulership, exaltation, exile and fall). Finally, other criteria such as the rulership of the Ascendant and the Midheaven etc. are important.

These different criteria allow a planet to be highlighted and lead to useful conclusions when interpreting the chart.

The overall chart analysis begins with the observation of three sorts of planetary distributions in the chart: Eastern or Western hemisphere, Northern or Southern hemisphere, and quadrants (North-eastern, North-western, South-eastern and South-western). These three distributions give a general tone in terms of introversion and extraversion, willpower, sociability, and behavioural predispositions.

Then, there are three additional distributions: elements (called triplicity since there are three groups of signs for each one) - Fire, Air, Earth and Water - corresponding to a character typology, modality (or quadruplicity with four groups of signs for each one) - Cardinal, Fixed and Mutable - and polarity (Yin and Yang).

There are three types of dominants: dominant planets, dominant signs and dominant houses. The novice thinks astrology means only "to be Aries" or sometimes, for example, "to be Aries Ascendant Virgo". It is actually far more complex. Although the Sun and the Ascendant alone may reveal a large part of the character - approximately a third or a half of your psychological signature, a person is neither "just the Sun" (called the sign) nor just "the first house" (the Ascendant). Thus, a particular planet's influence

may be significantly increased; a particular sign or house may contain a group of planets that will bring nuances and sometimes weaken the role of the Ascendant, of the Sun sign etc.

Lastly, there are two other criteria: accentuations (angular, succedent and cadent) which are a classification of astrological houses and types of decanates that are occupied (each sign is divided into three decanates of ten degrees each). They provide some additional informations.

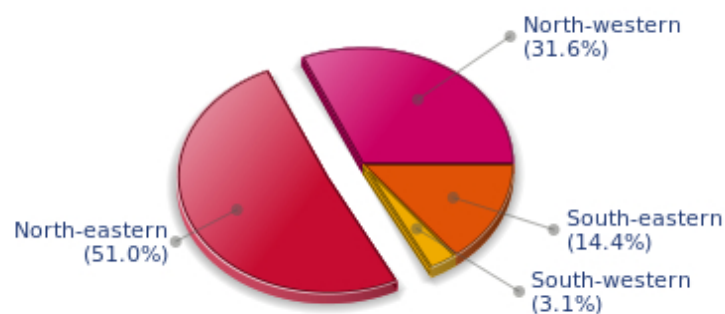
These general character traits must not be taken literally; they are, somehow, preparing for the chart reading. They allow to understand the second part of the analysis, which is more detailed and precise. It focuses on every area of the personality and provides a synthesis of all the above-mentioned parameters according to sound hierarchical rules.

As explained in the introduction of your Psychological Portrait report, minor dominants are analysed at the end of Annex 1, for purposes of clarity.

Your Planetary Repartitions

Each quadrant is a combination of the four hemispheres of your birth chart and relates to a character typology. The Southern hemisphere – the top of your chart, around the Midheaven – is associated with extraversion, action, and public life, whereas the Northern hemisphere prompts to introversion, reflexion, and private life. The Eastern hemisphere – the left part, around the Ascendant – is linked to your ego and your willpower, whereas the Western hemisphere indicates how other people influence you, and how flexible you are when you make a decision.

Your Four Quadrants

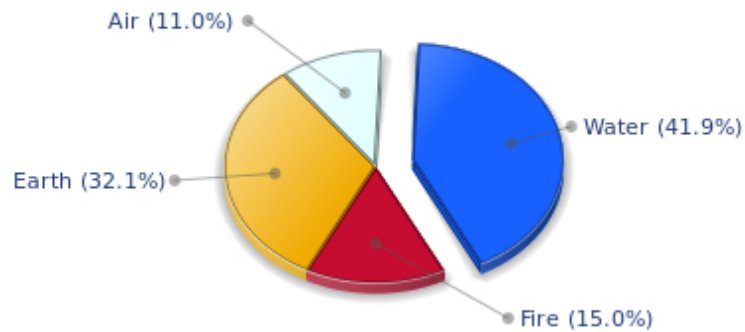


Penélope Cruz, the nocturnal North-eastern quadrant, consisting of the 1st, 2nd and 3rd houses, prevails in your chart: this sector favours self-assertion and material security to the detriment of your perception of others. You consider self-transformation to be a hazardous adventure. You are inclined to seek stability and you tend to protect yourself with your actions. Possession, acquisition but also communication, without opening up too much, are part of your deep motivations. You are rather autonomous and constant, however it is important that you pay more attention to others, so that you can improve your outcomes.

Your Dominant Modes and Elements

Penélope Cruz, here are the graphs of your Elements and Modes, based on planets' position and angles in the twelve signs:

Your Four Elements

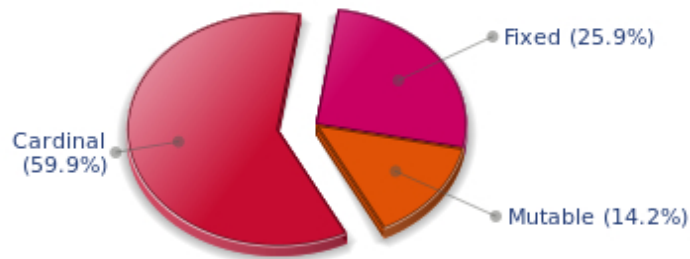


The predominance of Water signs indicates high sensitivity and elevation through feelings, Penélope Cruz. Your heart and your emotions are your driving forces, and you can't do anything on Earth if you don't feel a strong affective charge (as a matter of fact, the word "feeling" is essential in your psychology). You need to love in order to understand, and to feel in order to take action, to the detriment of a certain vulnerability against which you should learn to fight.

Like the majority of Earth signs, Penélope Cruz, you are efficient, concrete and not too emotional. What matters to you is what you see: you judge the tree by its fruits. Your ideas keep changing, words disappear, but actions and their consequences are visible and remain. Express your sensitivity, even if it means revealing your vulnerability. Emotions, energy and communication must not be neglected; concrete action is meaningless if it is not justified by your heart, your intellect or your enthusiasm.

The twelve zodiacal signs are split up into three groups or modes, called quadruplicities, a learned word meaning only that these three groups include four signs. The Cardinal, Fixed and Mutable modes are more or less represented in your natal chart, depending on planets' positions and importance, and on angles in the twelve signs.

Your Modes



Penélope Cruz, the Cardinal mode is dominant here and indicates a predisposition to action, and more exactly, to impulsion and to undertake: you are very keen to implement the plans you have in mind, to get things going and to create them. This is the most important aspect that inspires enthusiasm and adrenalin in you, without which you can grow weary rapidly. You are individualistic (maybe too much?) and assertive. You let others strengthen and improve the constructions which you built with fervour.

Your Dominants: Planets, Signs and Houses

The issue of dominant planets has existed since the mists of time in astrology: how nice it would be if a person could be described with a few words and one or several planets that would represent their character, without having to analyse such elements as rulerships, angularities, houses, etc!

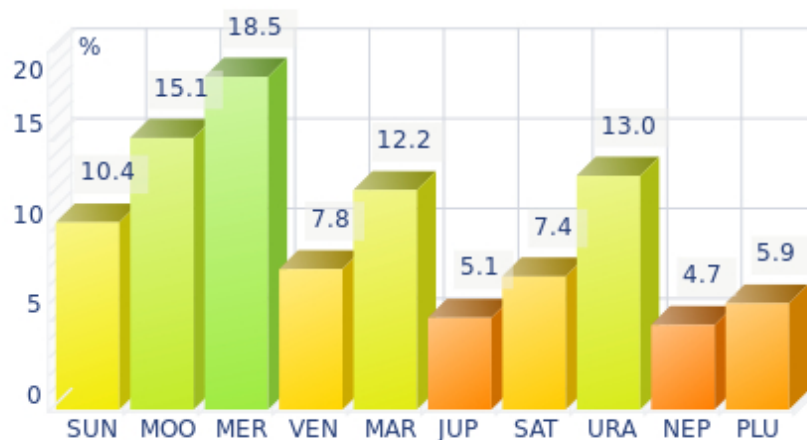
The ten planets - the Sun throughout Pluto - are a bit like ten characters in a role-play, each one has its own personality, its own way of acting, its own strengths and weaknesses. They actually represent a classification into ten distinct personalities, and astrologers have always tried to associate one or several dominant planets to a natal chart as well as dominant signs and houses.

Indeed, it is quite the same situation with signs and houses. If planets symbolize characters, signs represent hues - the mental, emotional and physical structures of an individual. The sign in which a planet is posited is like a character whose features are modified according to the place where he lives. In a chart, there are usually one, two or three highlighted signs that allow to rapidly describe its owner.

Regarding astrological houses, the principle is even simpler: the twelve houses correspond to twelve fields of life, and planets tenanted any given house increase that house's importance and highlight all relevant life departments: it may be marriage, work, friendship etc.

Penélope Cruz, here is the evaluation diagramme for your planets:

Your Dominant Planets



The three planets that are most highlighted in your chart are Mercury, the Moon and Uranus.

With Mercury among your dominant planets, you are certainly cerebral, nervous, swift, curious, quick-witted, and you love to communicate. Your psychological pattern is intellectual, all the more so since Mercury is important, with its whole set of assets but also of weaknesses, obviously.

Your sensitivity, emotions, and heart's impulses give precedence to thinking, which can lead people to believe that you are a playful and witty but heartless person, intellectualizing situations and juggling with words and numbers whilst ignoring human aspects of things. Of course, it is said that cats always land on their feet - this is your Mercurian strength and your trump card!

Your weakness lies in your nervousness, and you may miss your goal because of your "over-intellectualization" that may be detrimental to other kind of energies such as instinct, spontaneity, heart, sensitivity, etc.

The Moon is one of the most important planets in your chart and endows you with a receptive, emotive, and imaginative nature. You have an innate ability to instinctively absorb atmospheres and impressions that nurture you, and as a result, you are often dreaming your life away rather than actually living it.

One of the consequences of your spontaneity may turn into popularity, or even fame: the crowd is a living and complex entity, and it always appreciates truth and sincerity rather than calculation and total self-control.

As a Lunar character, you find it difficult to control yourself, you have to deal with your moods, and you must be careful not to stay passive in front of events: nothing is handed on a plate, and although your sensitivity is rich, even richer than most people's, you must make a move and spare some of your energy for... action!

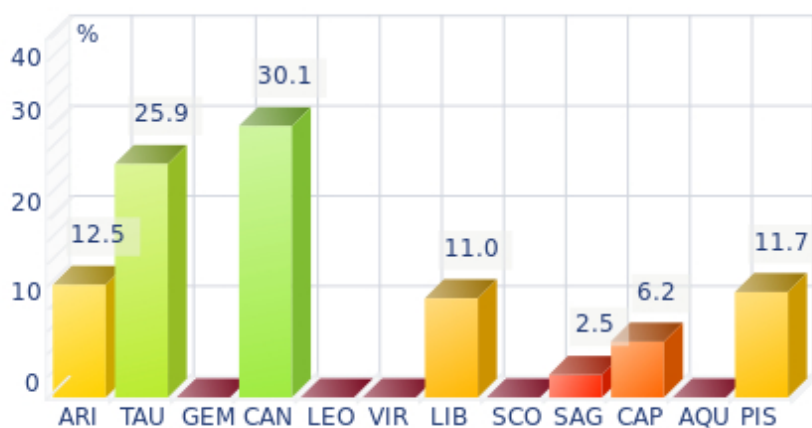
Uranus among your dominant planets: just like Neptune and Pluto, Uranian typology is less clearly defined than the so-called classical seven planets that are visible to the naked eye, from the Sun to Saturn. However, it is possible to associate your Uranian nature with a few clear characteristics: Uranus rhymes with independence, freedom, originality, or even rebelliousness and marginality, when things go

wrong...

Uranus is Mercury's higher octave and as such, he borrows some of its traits of character; namely, a tendency to intellectualize situations and emotions with affective detachment, or at least jagged affectivity.

Therefore, you are certainly a passionate woman who is on the lookout for any kind of action or revolutionary idea, and you are keen on new things. Uranians are never predictable, and it is especially when they are believed to be stable and well settled that... they change everything - their life, partner, and job! In fact, you are allergic to any kind of routine, although avoiding it must give way to many risks.

Your Dominant Signs



In your natal chart, the three most important signs, delineated according to the above-mentioned criteria, are, in decreasing order of strength, Cancer, Taurus and Aries. They are often prominent because your Ascendant and your Sun are posited there. However, it is not always the case: it may be because they are occupied by a cluster of planets, by a planet near an angle other than the Midheaven and the Ascendant, or because two or three planets are very active and form numerous aspects from these signs. Therefore, you partly take on the three signs' characteristics, which are somehow superimposed on your natal chart, and all the more so if any of the signs in question is highlighted.

Cancer is one of your dominant signs and endows you with imagination and exceptionally shrewd sensitivity. Although suspicious at first sight - and even at second...- as soon as you get familiar with people and let them win your confidence, your golden heart eventually shows up, despite your discretion and your desire for security that makes you return into your shell at the slightest alert! Actually, you are a poetess and if you are sometimes blamed for your nostalgia and your laziness, it is because your intense inner life is at full throttle...

With the Taurus sign so important in your chart, you are constructive, stable, and sensual. Good taste, sense of beauty, manners, and unflinching good sense - all these qualities contribute to your charm and seductive power. Furthermore, if some people criticize your slow pace and your stubbornness, you rightly reply that this is the price for your security, and that you like the way it is - slow and steady....

Arian blood runs through your veins! You have that enthusiasm, frankness, courage, and fastness which usually make you so likeable in spite of your somewhat rough, naive, or violent side. As a bonus, Aries'

gushing fire always gives you the impetus to make a fresh start, should you stumble or undergo life hardship!

Your Dominant Houses



Houses 1, 3 and 4 are the most tenanted ones in your natal chart. To compute their strength, planets and angles are weighed according to various astrological criteria such as swiftness, activity, angularity, rulership etc. From the analysis of the most tenanted Houses, the Astrologer deduces the fields of activity that are most relevant to you, be it because of what you are experiencing, or what you may experience in the future, or because of your deep inner motivations.

With a dominant 1st house, your magnetism is powerful, and your individuality as well as your willpower are out of the ordinary. You are a determined, strong-willed, and assertive person, with this relative criterion at least.

It is likely that you never go unnoticed when you are in a crowd or a in reunion: an important 1st house suggests that you are a charismatic person with above average vital energy, especially if the Sun is present in this sector.

Your personal interests are always important and you never forget them, which doesn't mean that you are self-centered, but only that you behave according to what is in harmony with your deep nature!

As the 3rd house is one of the most important houses in your chart, communication plays a major role in your life or in your deep motivations: frequent short trips, open-mindedness - which may offset a lack of mutable signs for instance - listening, discussion, interest in learning, knowledge accumulation or long-term studies, etc., are all areas that greatly appeal to you and are part of your daily life.

With an important 4th house in your chart, your private life, your intimacy, as well as your family and home, play a fundamental role. Your security and your family unit, the one you come from, but also the one you set up when you get married and start a family - or even as a girl bachelor living alone in your sweet home - are necessary for you to blossom. According to the Tradition, your father may play an important role in your life.

Your Style, Behaviour, and Peculiarities

What is commonly known as "sign" indicates the position of the Sun in the Zodiac. The Sun highlights all the characteristics of the sign he tenants. According to astrology traditional rules, these characteristics are all the more pure and exact when the Sun is strong in the sign, or when the sign is particularly highlighted within the chart. Here, we indicate the pure characteristics of the sign but you must bear in mind that they may only shed a light on a particular aspect of your personality. Indeed, the sole sign of the Sun, or of the Ascendant, can never describe an astrological chart because it depends on the degree of strength of the said sign in your chart.

Another important point must be underlined. Contrary to the Ascendant, which clearly describes your appearance, your vitality, your physical constitution, your spontaneous behaviour and the image you project, your Sun sign describes your inner self, which you may not completely be aware of, and which may emerge gradually as you mature: it is about your inner personality that you reveal only to the members of your entourage whom you trust. The Sun sign is likely to be the final form of your personality, once it has evolved in line with the energies of the other parts of your chart, the beginning of which is seen in the Ascendant, your external "bark".

The Ascendant is one of the major components of your natal chart. It is the zodiacal sign that rises in the East at the very moment of your birth. To calculate it, it is therefore necessary to know your exact time of birth.

It provides with a wealth of information on your personality. It is one of the key features that allows the analysis of several parts of you, such as your appearance, your character as it is initially perceived and your immediate behaviour. It describes the external aspect of your personality which you always display, but it also describes your physical constitution in the long-term, in other words, your health.

Please be aware that, in spite of the importance of the Ascendant, the accuracy of its description depends on how strongly highlighted it is in your natal chart. We use the entire set of astrological rules to assess the strength of the Ascendant. In most cases, the Ascendant is as revealing as your "sign", i.e., the sign where the Sun is posited at the time of birth.

You were born under the sign of Taurus and your Ascendant is in Aries

Before broaching the details of the meaning of your Sun and your Ascendant, as a preamble, we offer a brief generic interpretation of their combination in your chart:

Your Taurus Sun is of a secondary, slow and calm nature, though it gets easily excited when its passions or its self-interests are at stake. With your Aries Ascendant, which influences your outward appearance, you come across as an impulsive and assertive person. Indeed, when you meet people for the first time, your instinctive behaviour makes them think that you are a fighter and an adventurer always willing to move heaven and earth in order to win his case or to defend the weak. Perhaps it is only an image because your inner self is much simpler, in the good sense of the term. Despite knee-jerk reactions, as people get to know you better, they slowly realise that you are looking for security and stability. You gladly show your friends and relatives your true epicurean nature, which is a bit grumpy at times, and your sense of realities. In spite of their differences, both signs have a same quality in common since they

both endow you with quite a disarming naturalness.

You were born with the Sun in Taurus

Peace, joy of life and sensuality are essential to you: You have a simple and quiet nature. You easily find happiness because you are not competitive. In addition, your relaxed attitude and your common sense always take you to places where you are happy, even though you are not the number one, even though you do not move in haste. The important thing for you is to construct, with patience and persistence. These two qualities yield strong, steadfast, and sustainable efforts that can withstand any pitfalls.

You are gentle, with a slow thinking process, but once you have opted for an orientation, nothing, no one, can make you change your mind. You loathe changes in general, and once you have taken the few major unavoidable decisions in the course of your life, you are on track!

As you are born under this sign, you are loyal, steadfast, strong, patient, enduring, persistent, attached, sensual, realistic, constructive, tenacious, with a strong need for security. But you may also be stubborn, rigid, possessive, materialistic, static and slow.

In love, Madam, you are sensual and seductive. Your appetite for life is huge: Taurus is the most feminine sign of the Zodiac, therefore, you are the essence of femininity and you can be the mistress and the wife, in turn, without difficulty. You enjoy carnal pleasures as much as gastronomy and conjugal life.

You are possessive and jealous but, if your partner provides you with the harmony that you forcefully demand, you become an accomplished housewife. You will make a palace out of your house, you excel in all domestic tasks, you are an exceptional cook and, with your talent for interior decoration, you beautifully arrange lush plants with flowers and exquisite furniture. Your home is a haven of peace, richness, harmony and calm, with children radiant with health around you.

Your Ascendant is in Aries

Your natural energy is cut-and-dried. It may prompt you to take the driver's seat wherever you are. Were it not for the strange feeling of sympathy you arouse, you would seem to be arrogant. Charging ahead is not devoid of drawbacks. Your courage and your restlessness may hurt you and cause you to doubt, all of a sudden. As a consequence, your courage, your honesty, your enthusiasm and your straightforwardness may turn into aggressiveness, rebellion and vulnerability that were never suspected. Fortunately, the level of your dynamism is very high and your instinctive and pugnacious side, your particularly profuse energy will not leave you helpless for too long. The fire in your blood will put you back on the saddle towards new stampedes and conquests, as ambitious and glorious as they are perilous.

Because you are born under this sign, you are courageous, honest, enthusiastic, dynamic, swift, extroverted, straightforward, effusive, warm, impulsive, adventurous, bold, martial, competitive, but you may also be gullible, domineering, self-centered, impatient, foolish, thoughtless, childish, irascible, reckless, primary and a blunderer.

In love, Madam, you are a strong-minded intellectual woman: in general, the first thing that you do is to choose the man who pleases you and in all cases, you are the one to decide whether you want to stay or to leave! If you are a housewife, you are the one to take decisions over everything. Even though you may not be always easy to deal with, you are stimulating and, with you, something is always happening. You

are active, optimistic and your entourage must move forward. If your partner invites you to share his business, it will have to be on an equal footing: And your energy, your undertaking and innovative abilities will work wonders.

The ruler of your chart is in Cancer

The ruler of the Ascendant, also referred to as the chart ruler, brings a few interesting nuances to the meanings provided by the Sun and the Ascendant. The sign in which the ruler of the Ascendant is posited fine-tunes the style of personality described by the Sun and the Ascendant. It may strengthen it if the sign is identical to either of them.

The ruler of the Ascendant, Penélope Cruz, is Mars. In the sign of Cancer, it enables you to grasp the surrounding ambience and impressions as if you were an emotional radar. Therefore, you may shift from enthusiasm to boredom or rejection, should you subtly sense that you are appreciated or spurned, even though your feelings are unfounded.

Aspects to your Ascendant

Several planets form an aspect with your Ascendant, Penélope Cruz. Therefore, in their specific way, they modify your behaviour and your personality, which do not take on the pure characteristics of your Aries Ascendant only, but which are a blend of its characteristics with those of the said aspects.

★★★★★ Mercury conjunction Ascendant, orb 1° 21'

Your sense of communication and your intellectual process perfectly match your external appearance, Penélope Cruz. Thanks to Mercury, you are able to carry out your self-analysis very well and quickly, which gives a lot of spontaneity to your intellectual exchanges with other people.

★★★★★ Uranus opposite Ascendant, orb -3° 33'

Uranus is in opposition to your Ascendant, Penélope Cruz. This is not really a dissonance since at the same time, Uranus is in conjunction with the opposite angle, the Descendant, or DS, which represents other people, associations, unions, and your rapport with people. Uranus is the planet of independence, originality, freedom, and nonconformism. With this configuration, you come across as very impulsive with an almost roller coaster personality. You establish ties very easily in friendship, business, or love, but... you break up as easily, according to your thirst for freedom and your rejection of any immediate constraint. Your behaviour has the charm of unpredictability, and you fully exploit it. You must add some stability into your attitude if you want to experience the joys of lasting human relationships. They offer as much, or even more than newness, you will see...

★★★★★ Saturn sextile Ascendant, orb 2° 01'

Saturn is in soft aspect with your Ascendant, Penélope Cruz. This harmonious configuration brings about a responsible, loyal, persevering, and patient behaviour, and in a word, reliable. Your seriousness is appreciated, and owing to your capacity to easily analyse situations, you come across as a sincere and trustworthy person.

★★★★★ Moon square Ascendant, orb -5° 55'

Sometimes, Penélope Cruz, your sensitivity clashes with the image you want to project. As a result, you may feel vulnerable and suffer if you let yourself be disheartened. Try to put things into perspective and to confront your emotions without fearing your external image. This is how you can compensate for this

minor dissonance between the Moon and your Ascendant.

★★★★★ Sun conjunction Ascendant, orb 8° 44'

The conjunction of the Sun with the Ascendant represents the perfect fusion of will and vitality, and will and external appearance, Penélope Cruz. This conjunction indicates an above average charisma or magnetism. Moreover, there is a concentration of energy which enables you to naturally shine and attract, as well as to move mountains provided... you decide to do so!

★★★★★ Mars sextile Ascendant, orb 5° 53'

Your vitality and your taste for action are obvious, Penélope Cruz. Thanks to Mars, your behaviour is often perceived as energetic, or at least, as action-oriented and enterprising. Your dynamism is one of your constant assets.

Your Sensitivity

Affectivity and intuition are very developed, Penélope Cruz, and you are very sensitive to your environment. You “feel” atmospheres, moods and other people's emotions and when you capture negative influences, a feeling of ill-being immediately overwhelms you, all the more so because your lively imagination may destabilize you as it amplifies your receptiveness. Your nature is anxious and you tend to worry for your entourage. You strive to offer them a reassuring family atmosphere, the much needed comforting and warm sort of cocoon where you can laze around, at will. Because you care so much for your family, they may think that you are intrusive and that you try to rule their life through subtle affective blackmail. Trust them... and also learn to have more confidence in yourself!

Your family, your home and often your mother, Penélope Cruz, have a strong emotional importance. You feel attached to your roots and the intimate surroundings in which you live are essential; you are deeply fulfilled by this continuous source of affective charges: your home and private life are sacred for you, and you can feel very uncomfortable or unsafe if you are deprived of your haven of peace.

Paradoxically, the Tradition indicates that you are predisposed to frequent home moves.

★★★★★ Moon trine Venus, orb 0° 1'

The harmonious Moon-Venus aspect is an element of intimate balance that favours sensual and affective fulfilment. The search of well being includes all kinds of emotions and feelings. You love, you enjoy life in simple ways and you arouse your entourage's affection. The persons belonging to your inner circle are also objects of desire and pleasure. Tenderness and love are probably one and only thing: you are moved by the gestures of affection provided to you and by the daily acts, which strengthen two persons' mutual attachment. Whereas other people dread routine, in your case on the contrary, it increases your amorous feelings. You loathe all kinds of violence, particularly in your intimate life. The danger of this planetary configuration may be your constant changes of mood: whims are often on the agenda... and your will is quite weak. One last point: this aspect is frequently found in the charts of people with an aesthetic or artistic sensitivity.

★★★☆☆ Moon square Uranus, orb 2° 21'

The Moon and Uranus intrinsically share little in common: they get along as well as fire and water! It is difficult for you to reconcile your desire for well being and intimacy with your destiny's dazzling passions and thunderbolts. You may feel that your intimate and family realm hampers your freedom. There is a potential for crises, explosions or splits. The desire for independence does not get on well with security concerns. There may be strong temptations endangering your very life foundations and you may embark upon a liberating and personal adventure. However, you fear rash decisions. Your need for security may temper your impulses and put a brake on your individualistic aspirations. To harmonize these tendencies within your intimate life, you must leave yourself enough room for personal expression or for an activity of your own. Otherwise, as days go by, built-up tensions may jeopardize the quiet course of your life.

★★★★★ Moon quintile Pluto, orb -0° 14'

You are a riddle for people... and for yourself. This harmonious Moon-Pluto aspect arouses your desire to understand and to express elements hidden in your unconsciousness. You are interested in the occult, in laws that rule beings and things in the dark. You like to pull strings and to manipulate situations without people's knowledge in order to remain mysterious. You feel fine when you are not in the limelight, but you intervene in the dark, with subtlety. Your intimate behaviour reveals the distance that you strive to keep in order to protect your inner life. You gladly cultivate the angel of the bizarre, even in

your life habits and in your daily rhythms.

★★★★★ Moon sesqui-quadrate Neptune, orb 1° 1'

This Moon-Neptune dissonance wonderfully turns on the poetic soul, the exhilaration of feelings and dreams... and disturbs your practical life, as well as the management of contingencies. You do not lack inspiration but your reasons of living may be beyond your entourage's understanding! Bohemian life is pleasant but it is probable that you experience muddled situations. Your aims are noble and your intentions are very good. But you may not have the will to turn them into reality. It is important that you are wary of artificial paradises: escaping in the imaginary is not necessarily the best solution for problem solving. You are in search of an inaccessible tranquillity and you tend to procrastinate chores. Nevertheless, facts remain present and you may see that non-interventionism can only increase your difficulties. You must put an end to this vicious let-go circle. This does not imply that you have to forsake your dreams or to repress your very rich sensitivity.

Your Affectivity

In your chart, the Sun is in Taurus and Venus, in Pisces. Your behaviours (solar) usually reveal a passionate and possessive side. How is it possible to keep a love that you know to be fragile (Venus in Pisces) and elusive? How is it possible to fully enjoy a Taurean relationship when the muddled feeling that it is ending soon makes you distant? Your affectivity lives on these contradictions: on the one hand, an intense desire, demanding but unyielding, cut and dried. On the other hand, an amorous hypersensitivity which underlines the relationship's ambiguities, limits and flaws... In your quest of absolute plenitude, you are impervious to simple, uneventful loves devoid of passion. You need to clear up doubts and to prove to yourself the validity of a relationship that you feel to be fragile. Selection is the common feature that your solar and your Venusian signs share. Not everyone is allowed to enter into your affective realm. Taurus is known to be cautious, very keen to keep his benefits and the security of his life foundations. Venus in Pisces is selective too and her heart impulses are based on an unquestionable natural harmony. Passions cannot, and must not, be reasoned. The only important things are instincts and the intuition of an obvious connivance: perfect harmony. However, how many doubts must be encountered before achieving this very theoretical ideal!

Compassion and self-sacrifice: you are fond of this romantic mode and you are willing to express your feelings, the intensity of which is unlimited, Penélope Cruz. With excitement and imagination, you dream your amorous relationships as much as you actually live through them. The line between the concrete world and your huge hopes is so tenuous that you don't know anymore where it is, although your particularly rich sensuality prompts you to experience your feelings concretely. You want to share communion and passion with your partner. The lyrical flights of your feelings break from your heart as waves that you do not attempt to control because they give you a real, almost voluptuous and carnal joy. You give a lot – sometimes too much - without reservation, almost without propriety, totally revealing your vulnerability during your amorous exchanges because you are sure of the quality and the might of your feelings: they are so powerful and overwhelming that you are aware that nothing can resist them.

Penélope Cruz, whether you want it or not, you are the illustration of the famous French saying that: "To live happily, let's live in hiding!" Nothing suits you better than tranquillity, peace and, finally, to some extent, privacy in your love life. It may be caused by many different reasons, sometimes shyness, romanticism, modesty etc. but in any case, you are prone to experience love better in the clandestine

mode. The legalization of your union, so often sought after by others, is something you dread more than anything else. You are romantic, secretive, even melancholy, sometimes, and you tend to sublimate or to spiritualize your feelings, with the effects of bringing about moments of affective loneliness that do not really take a toll on you. Indeed, you operate a sort of fatalistic association of love with ordeals in general: often, you meet with your soul mate during difficult circumstances or in a climate of sorrow. Is it due to your highly dedicated and loving nature, or to your innate goodness? Whatever the answer may be, you often establish serious links during such occasions. It may occur in a closed setting, a hospital or a convent, or a prison. Mysteriously enough, love is born and develops easily. You are a philanthropist with genuine compassion at the bottom of your soul and you give of your best when the period is filled with sorrows and doubts. You are among those who can commit themselves in all sincerity and fervour to charities. There, your feelings will certainly find a natural outlet, in so far as you are unable to express them strongly enough in your concrete love life. In spite of your misleading appearances, you are rather the shy and reserved kind in the very intimate area of feelings but you are so nice, dedicated and generous that you are not any worse off than others: you successfully turn your ordeals into periods of personal enrichment and beneficial growth, on the spiritual plane as well as for your destiny. Besides, you are blessed with a kind of protection against life hardships. The ravages of loneliness have absolutely no effect on you, to your close relations' deep astonishment.

★★★★★ Sun semi-square Venus, orb $-0^{\circ} 09'$

The Sun and Venus form a mild dissonance in your natal chart. There is nothing very serious to worry about. There is only a small gap between what you really want on the one hand, and your natural need to charm and the warmth you display on the other hand. Thus, will and affectivity are slightly out of phase, but it is most likely that you are the only one who feels it. This is a quite trivial characteristic, and you probably do not have to correct it, since it is so mild.

★★★★★ Venus inconjunction Uranus, orb $-2^{\circ} 32'$

Your sentimental life is adventurous: you prefer Bohemia to the comfort of a quiet but shaky love affair. You are a hard-liner and you think that love should be genuine or it should not be at all! You have difficulties in resisting your heart impulses and untimely passions that may challenge your affectivity. You need air, freedom and a relative independence. You also need to fully experience your love impulses, regardless of the price to be paid. The heart has its own reasons that no rules can hamper... The obvious danger may be to cause dramatic hurly-burly. Your inflexibility on the affective plane does not favour a quiet life where « one makes do with very little ». You are the all or nothing type. But does the absolute really belong to our world?

The Way You Take Action and Your Sexuality

It is difficult to find a more sensitive person than you, Penélope Cruz. You are able to contain your aggressiveness and it may be hard for you to exteriorize your feelings. You are usually passive and you draw your strength from inertia and resistance more than from the will to take action. Your mood is changing, you show little of yourself and you may surprise with your inopportune reactions that come late, when people have forgotten what it was all about. The only area where you express yourself with zeal and where your actions are successful is the area of home or, more symbolically, in the fields where you can achieve security. In other words, you need to feel comfortable before you can move, in concrete matters as well as in sexuality.

Your entourage becomes quickly aware of your liveliness and of... your contentious and witty mind, Penélope Cruz. Your energy efficiently focuses on communication, writing, verbal jousting, speeches, etc. but also on the numerous short trips you make to meet with people.

For you, to take action means to communicate, to convince, to accumulate contacts and, somehow, to assert yourself as you hold sway over your entourage. You may be restless. You think that communication is the basis of any progress and that it is much more useful than any direct initiative: in your opinion, if people are convinced, everything else always follows naturally.

Your siblings, if you have any, have probably felt the warrior hint in the way you communicate. As you mature, you may learn to tone down your manners as soon as someone is around...

★★★★★ Mars square Pluto, orb $-0^{\circ} 03'$

There is a limit to your respect for laws and norms! Morals, conventions, social marks are of little value to you. With a touch of anarchy in the soul, you disregard conventions and you experience a sort of personal revolution. You prefer unconventional actions to dull conformism. To express your differences, you use a wide scope of possibilities that ranges from brewing revolt to ideological renunciation. Sometimes, you dismiss concrete facts that are nevertheless unavoidable. Hence, you undergo delusions and backlashes. You may also act rashly, to the detriment of your ideals. It is important that you control your actions and that you balance the respect for constraints with your personal demands and inner motivations.

★★★★★ Mars conjunction Saturn, orb $3^{\circ} 51'$

Persistent action always bears fruit eventually. All that is needed is patience... A quality you have, undoubtedly. As confrontations become unavoidable, you show strong persistence and indisputable perseverance. Potential obstacles are more stimulating to you than they are discouraging. You are naturally fit for effort and for confronting realities and facts. You quickly overcome difficulties and you respond to crises in an efficient and considerate manner. You are enduring. You handle events with rigour and precision. These are valuable qualities nowadays, for they often come with the capacity to undertake adventurous experiences and to take limited risks!

★★★★★ Sun sextile Mars, orb $-2^{\circ} 5'$

This planetary Sun-Mars aspect reinforces courage, determination and energy. The need for action is obvious. Whatever your will designs is implemented with fieriness, despite all oppositions. You are decisive and wilful, even foolhardy. Your behaviour may be heroic: you know how to face adversity, to stand for your rights and your decisions, regardless of any confrontation you may have to cope with. The only danger may be that you overestimate your chances and your strength. But your audacity turns out to be rewarding, more often than not.

★★★★★ Mars trine Jupiter, orb $-6^{\circ} 05'$

Coordinated action wins over almost all obstacles! You mobilize your energy and your fighting spirit advisedly and you take timely action. This is the reason why you are efficient in situations requiring courage, determination, swift responses and diplomacy, altogether. You do not fear confrontations but you never provoke them unnecessarily. You take advantage of your chances and you adjust your behaviour to concrete situations. You empirically handle events with relevance. The only danger is that you may be overzealous to seize any opportunity... even those that are not necessarily good in the long run. You should take the time to carefully consider the facts and their consequences. The swiftness of your reactions must remain an asset.

Your Intellect and Your Communication Style

Your mind is calm and balanced; even though you assimilate slowly, your memory is remarkable. Your judgment is based on reflection and reason and draws on past experiences. Penélope Cruz, you are a good adviser, a reliable person whom people can confide in discreetly. You are full of good sense, cautious, methodical and disciplined and you are able to carry many good projects to a successful conclusion. You are very opinionated and determined in your actions. However, your tendency for intolerance and prejudices may offend your entourage. They wish that you exercised more flexibility instead of systematically refusing what cannot be immediately checked. You usually express yourself with a lot of charm and this is what allows you to get people to better accept your well-established habits.

Your intellect and your communication abilities are not directed towards any particular field, Penélope Cruz: indeed, you are by nature curious, lively, mobile and you generally adjust remarkably well to your surroundings.

Your versatile personality prompts you to get interested in many things, and it is not exaggerated to say that your intellect and your flexibility constitute strong assets for your life. People around you may rightly or wrongly perceive a kind of shallowness because of your adaptability and skilfulness - sometimes too opportunistic - that are your strong points.

★★★★★ Mercury sextile Saturn, orb 0° 4'

Your vision of the world is rigorous and objective. An exemplary logic characterizes your mental attitude and your human relations. Your discerning faculties overlook no detail. You need to know the whys of your life and to explore the backstage of your surrounding world. The deepness of your relations dismisses superficial connections. It may be the reason why your interest is aroused when you are in touch with elements that are alien to your mode of functioning. You have the soul of a researcher, regardless of the form that your investigations may take. It may be an exacerbated curiosity for human topics or a will to understand relationship stakes. It may also be a hobby or a course of study that introduces you to a riddle. It does not matter! Life is a perpetual quest for the unknown. Your critical mind is highly developed and you take commonplaces for granted only after thorough consideration.

★★★★★ Mercury opposite Uranus, orb -4° 54'

You are the champion for useless intellectual speculations, for crazy and revolutionary ideas. This Mercury-Uranus dissonance is the signature for an eccentric character, more ready to ridicule generally accepted ideas than to build up stable patterns. Your sense of humour reveals a critical and forceful mind. You can stand for an idea in the face of all opposition but you do not hesitate to support the opposite thesis the day after... with the same conviction. The coherence of your points of view is harmed by these spectacular reversals that constitute your speciality. In the relationship area, you may also provoke dramatic turns of events if your ideas are conflicted. The good news is that it seems difficult to convince you to accept points of view running counter to your principles. Intransigence also has its virtues.

★★★★★ Sun conjunction Mercury, orb 7° 23'

You know how to play with your image, how to give multiple representations of yourself. A precious asset: you are sensitive to other people's opinion and you adapt yourself to the audience. Of course, there is a "show" side in your manner that may prevent perfect cohesion. But that's the other side of the coin, for an extraordinary capacity to discover. This aspect translates into an acute sense of observation, an intense desire to learn and to bring everything to light. You strive to be informed in many circumstances,

to understand the machinery of the world surrounding you, particularly regarding all human topics. And you will change according to that information and the knowledge gained. You have the chameleon's adaptation powers. And its vulnerability, as well.

★★★★★ Mercury sextile Mars, orb 4° 32'

This harmonic Mercury-Mars aspect is the signature of a quick wit and an energetic character. You take decisions rapidly and you implement them straight away. You never accept stiff situations. You need to design, to take action, to fight to express your acute sense of relation: the world, the people, everything is of concern to you... You need to be involved in relationships and in dialogues. Your sharp retorts earn you a reputation of straightforwardness. On the relations' area, your quick wit and your mobility are greatly appreciated. You find the allies and partners you need at the right time. An art of resourcefulness that is precious...

★★★★★ Moon square Mercury, orb -7° 16'

The Moon suggests relaxation, whereas Mercury implies a discoverer's mind. They both make sense and each one requires special attention, as they are sometimes upsetting. This Moon-Mercury aspect is likely to bring about nervousness or instability. Nervousness stems from the multiplication of your spots of interest and the perpetual restlessness of your mind, which prevents relaxation and well being from settling in. The outside world constantly appeals to your attention and you shift from one issue to another, to the detriment of your tranquillity. Therefore, it is important that you find the balance between two antinomial attitudes: letting-go versus curiosity, tranquillity versus communication. The new persons you meet with are not necessarily trustworthy and there is no certainty that the contact is harmonious. It is important that you use both influences alternately.

Your Goals, Motivations, Career, and Destiny

Your Sun is posited in the 1st House

Willpower and appearance united! You are so lucky, Penélope Cruz, that your inner self and your behaviour merge to increase your energy and your vitality. Since the Sun represents your self-assertiveness and your profound personality, he expresses itself best when this configuration is strongly featured. Indeed, you form a whole block and there is no discrepancy between your real identity, as perceived by you and your close friends, and the image you project.

With this nice association, your behaviour matches your true nature. You act externally according to your willpower, without filter, nor reservation. It endows you with a wilful, personal and magnetic temperament. You attract, you charm and when you are in the middle of a crowd or a meeting, your personality stands out with depth and brilliance because you have the kind of radiance and warmth that can never go unnoticed.

With this configuration, the only goal in your life is to assert yourself, proudly and decidedly, through what you are and through your actions, everywhere you go. Your ambition is to experience your temperament to the fullest, in all areas. You are sheer energy in motion. There is no gap between the image you project and your real self and for this reason, your inner qualities are never wasted.

The other side of the coin is that people may find that you are self-centered and that you do not take

people's opinions into account... Practice some humility if you can, because too much magnetism may arouse fears in people who are not yet well acquainted with you.

The ruler of your chart is in the 3rd House

The ruler of the Ascendant, also referred to as the chart ruler as explained in a previous chapter, is also posited in one of the twelve Houses of the chart. Just like the Sun in his House, the ruler of the Ascendant provides certain abilities, or it makes you appreciate more keenly certain areas of life.

The ruler of your chart is in the 3rd House, Penélope Cruz. In this configuration, it facilitates your exchanges with people, your short trips, your correspondence, and your capacity to adjust to situations and people, particularly the members of your entourage, as well as your siblings if you have any.

Aspects influencing your ambitions

Regarding your destiny or your career, the following aspects of your natal chart allow to fine-tune what has just been said above:

★★★★★ Moon opposite Midheaven, orb -7° 03'

The Moon in opposition to your MC does not create a real dissonance in your natal chart, Penélope Cruz. Actually, the Moon is also in conjunction with your Imum Coeli which represents your roots, your family, and your home. In fact, you take pleasure in letting yourself go when you are with your entourage, in the privacy of your home, rather than in society, where you keep your guard on, for fear of criticisms. Thus, your emotions are not at the service of your career, but rather exclusively dedicated to your family circle.

★★★★★ Sun sextile Jupiter, orb -3° 15'

This harmonious Sun-Jupiter aspect indicates an optimistic background that usually wins the entourage's adherence. It also suggests ambition and generosity and favours social integration and success. The desire to earn general consideration prompts you to display energy, joviality and benevolence. However, opportunism may be the other side of the coin. As you strive to win everyone's esteem, you may fall into disrepute. It is important that you remain clear-sighted so as to persistently pursue your long-term aims without believing that you should always « grab each and every opportunity ». However, this aspect remains an element of success because it allows you to adjust your objectives to the context, to whatever the situation offers or, on the contrary, to force your way through events and to achieve your ideals.

★★★★★ Sun inconjunction Neptune, orb -1° 3'

If this Sun-Neptune dissonance is not well integrated, it may bring about confusions and errors of judgment. It is the signature for Don Quixote in search of chimera, pursuing impossible dreams. Your intuitions may lead to an incorrect estimation of facts. Bohemian life is certainly pleasant. But it is often necessary to remain realistic, lest to be exposed to delusions. Carelessness and letting-go is not suitable. In order to properly integrate this aspect, you must control the possible drift of a wandering and fabulous sensitivity. This aspect favours poetic and romantic inspiration. But you must not let it rule your concrete actions. It is important to allow your intuitive capacities to be fully expressed while keeping a lucid mind, simultaneously.

★★★★★ Jupiter sextile Midheaven, orb -5° 01'

Jupiter is in soft aspect with your Midheaven, Penélope Cruz. It means that you are often lucky, or that you receive support in your career or your social destiny. You trust your abilities to overcome obstacles coming up in your way, and you respect authority and laws. So, thanks to this configuration, you make your way in the world with the feeling that you move forward rather quickly, as compared to average people.

★★★★★ Sun trine Midheaven, orb -8° 16'

In the professional and social status areas, Penélope Cruz, you know what you want, and you know how to cleverly obtain it. Because the Sun and your Midheaven are in agreement in your natal chart, you have no qualms and no hesitations when it comes to defining the strategy for reaching your goal.

★★★★★ Sun inconjunction Pluto, orb -2° 54'

You are dealing with both sides of the coin. People are mistaken when they think that they know you well, because the image you project does not necessarily depict what you really are. You may look like any given model, whereas you actually consider social values to be empty and childish. Deep down, you are an anti-establishment person and you do not belong to the world and its laws. Or, on the contrary, you may project a more marginalized image and make it a point of honour to literally stick to your aspirations' ethics. You do not know who you are really, and where you stand. You may choose some sort of marginality, the adherence to another realm and a different scale of values. Unless you choose a life that apparently lives up to the expectations of others. In that case, you preserve a corner for your private secrets, with no norms, no fashion concerns, relationships off the beaten tracks, passions very removed from conventions. Your attitudes may seem paradoxical as you shift from commitment to refusal and from involvement to withdrawal.

Your Assets and Your Part of Joviality

Penélope Cruz, your sensitivity, your emotions, and your artistic capacities, particularly regarding music and rhythm, are strongly increased with this position of the planet of Greater Fortune in this borderless sign. It endows you with an artistic and endearing side as well as with flexible and mobile ways to consider your relationships and your environment. Your dreamy state of mind and your sensitivity to other people's sufferings may prompt you to get involved with compassion in great humanitarian causes.

Although Nature's nudge in the right direction is not spectacular here, Penélope Cruz, it is very real, nonetheless. Your sense of dedication, your generosity, and your compassion are developed to such an extent that they often enable you to happily find fulfilment in non-mediatized areas such as humanitarian work and charities. Your human qualities are strongly favoured when you strive in obscurity, discretion and silence. Your reward is a life that is rich and not limited to material contingencies.

The planet Jupiter symbolizes expansion, broadness and generosity. Jupiter is associated with the functions of synthesis, enthusiasm and optimism. In your natal chart, his house position is more important than his sign position because, like Saturn, Uranus, Neptune and Pluto, he is a slow planet. Many people born in the same period have Jupiter in the same sign. This is the reason why the sign occupied here is less meaningful than when it is occupied by the so-called fast planets, i.e. the Sun, the Moon, Mercury, Venus and Mars. Therefore, some caution is to be exercised as you read what follows.

Jupiter in Pisces increases your natural generosity and your dedication capacity. Your empathy is strong and you are inclined to offer your strength and your enthusiasm to the most deprived people and to give unlimited assistance to others. Your imagination is powerful and your feelings may flare up easily: with your sensitivity on the alert and your unbridled affectivity, you belong to the category of people who intuitively detect other people's sufferings and most valuable qualities of the heart, as if you were a human radar.

Your Serious Side

Your emotions are controlled and your imagination is analyzed through a magnifying glass. You gain in lucidity what you lose in emotionalism. You may be interested in your origins, in your roots and in real estate matters. You become thrifty as time goes by.

Impersonal detachment or cold-looking demeanours may hamper your communications, Penélope Cruz, although they increase your concentration, your patience, and your ability to study and to accumulate knowledge. As far as your entourage is concerned, quality prevails over quantity, and you can easily alternate agitated and eventful periods with periods of solitude.

Your challenge is certainly to make an effort in order to be less demanding from people and to keep a minimal number of relations. Nobody is perfect, and neither are you! Pay attention to people's qualities and forget their flaws, for they should not prevent you from enjoying their company.

The planet Saturn symbolizes contraction, effort, time, limitation and concentration. Saturn eliminates anything that is not authentic, sooner or later. It is impossible to cheat him as he gives an irresistible desire to form a coherent whole with oneself, in responsible and wise ways. He is the great purifier. He represents our limitations but also our truth. In your natal chart, the house position where Saturn is posited is more important than his sign position because, like Jupiter, Uranus, Neptune and Pluto, he is a slow planet. Many people born in the same period have Saturn in the same sign. This is the reason why the sign occupied here is less meaningful than when it is occupied by the so-called fast planets, i.e. the Sun, the Moon, Mercury, Venus and Mars. Therefore, some caution is to be exercised as you read what follows.

Saturn in Cancer decreases your emotionalism. You are less vulnerable as you build a protective carapace, with all the good and the bad consequences that may be implied. You are provident and wise in the family and real estate areas, may be a bit too much.

A Few Special Points

Your Uniqueness and Your Utopias

Your daily life is subject to numerous sudden developments. Your work environment is neither stable nor quiet, as dramatic turns of events often follow one another. The absence of habits and stability could be considered to be ... habitual!

Relations in the work setting are quite chaotic. You are often deemed extravagant, but also inspired and

creative, at least in your environment. Besides, your occupation is out of the ordinary. It belongs to an original or avant-garde sector, to innovative technologies or to unusual areas.

Health wise, you may undergo nervousness or some brutal reversals that are followed by similarly swift recoveries.

Your Inspiration and Your Illusions

There is a form of confusion or of vague perception in matters of sexuality, investments, inheritances and, as a general rule, other people's finance and the money you do not earn by yourself.

You have the gift for sounding the depths of your psyche, for feeling what others' motivations are, and you thoroughly understand behavioural patterns, in a sensitive, emotional and non-intellectual way.

This configuration may bring fortune as well as breaches of trust. Be very cautious before trusting anybody, as far as investment and finance are concerned.

Your Passion and Your Authority

Your relationships with your subordinates and your colleagues are marked with passion and may create domineering/dominated connections conducive to conflicts, unless you use your authority to stabilize the situation.

You do not accept your superiors' authority, and you continuously strive to reverse your relationships with them in order to eventually take the domineering role that better fits your nature.

In a few rare instances, severe health conditions may strike you down, but in principle, you overcome them like the phoenix that is reborn from its ashes.

Your Isolated Planets

In general, the ten planets of the chart are connected to other planets by major or minor astrological aspects. It is owing to those ties that the planets' energies can manifest in the chart owner's personality and play out within safeguards according to a specific tonality.

It seldom happens that in a natal chart, a planet is totally disconnected from the nine other planets.

Astrologers have observed that when such a case occurs, the person feels the energy of the unaspected planet in quite a singular way, very jerky and powerful at the same time. Thus, for instance, the famed astrologer Jean-Baptiste Morin de Villefranche wrote that "an unaspected planet heralds that something strange or extraordinary will take place regarding the meanings of the house in which the said planet is posited" (source : l'astrologie selon Morin).

Rules for detecting an unaspected planet: among all the testimonies that we have reviewed to this day, based on our experience, we tend to agree with American astrologer Janis Huntley who accepts seven

aspects, which involve the zodiacal twelve sections of 30 degrees. The aspects to be considered are the conjunction (0 degree, cooperation or tension), the semi-sextile (30 degrees), the sextile and the trine (60 and 120 degrees respectively, aspects of cooperation), the square and the opposition (90 and 180 degrees respectively, tensed aspects), and the quincunx (150 degrees, slightly tensed). In this detection, the chart's angles are not taken into account.

In any case, it is important to remember that an isolated planet clearly expresses its influence when it is a personal planet. Thus, when the Sun, the Moon, Mercury, Venus, or Mars is isolated, it is certain that the effects described by Jean-Baptiste Morin de Villefranche will become manifest. As for Jupiter, Saturn, Uranus, Neptune, and Pluto, one must be cautious because the volume of cases documented is not yet large enough.

Your chart has no isolated planet, and this particular case does not apply to you.

Annex 1: Your Minor Dominants

The five following dominants are less significant than those described at the beginning of your report. They may not be strongly felt. In some cases, they add several minor details to the analysis of your character, but they are rather for curiosity purposes. It is not necessary to take them into account when you first read your portrait.

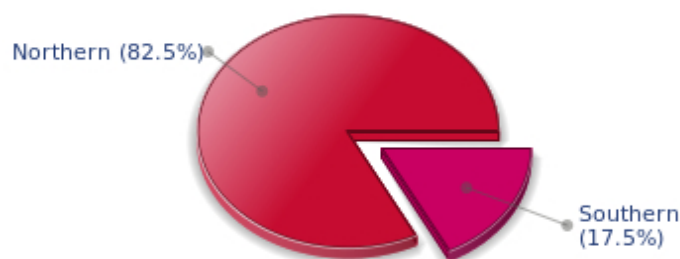
Your Planetary Repartitions: Northern, Southern, Eastern and Western Hemispheres

The axis linking the 1st house's cuspid (the Ascendant) to the 7th house's cuspid - the Descendant - divides the zodiac into two bowls, a superior bowl, in the South, and an inferior bowl in the North. Quoting an expression by the famous American astrologer Rudhyar, the Southern part and the Northern part correspond to two functions: "being" and "doing". Other concepts are also associated with this North and South distribution, such as introversion - Northern hemisphere - and extraversion - Southern hemisphere - being or appearances, inner life or external life, reflection or action, dreaming one's life or living one's dreams, the abstract or the concrete, backstage or limelight.

This is not about determination but about personal inclination: thus, some people will be thrown into public life despite a prominent Northern hemisphere. If this happens, however, it will not be due to their will, their taste or their deep nature. Conversely, a prominent Southern hemisphere will not bring about a famous destiny to its owner, even if he tends to turn the spotlight on himself, or if he looks for a more active life. It is a matter of deep nature and natural inclination. Of course, none of the typologies is "superior" to another.

In your birth chart, Penélope Cruz, the ten main planets are distributed as follows:

Your Northern and Southern Hemispheres



Penélope Cruz, the predominance of planets in the Northern hemisphere prompts you to reflect and imagine rather than to exteriorize your actions and to be at the forefront of the stage. So, should you wish to remedy this situation, it is up to you to force your nature to take action in broad daylight, to communicate, and to assert yourself... then, you can move forward in this concrete life and enjoy your newly won situation.

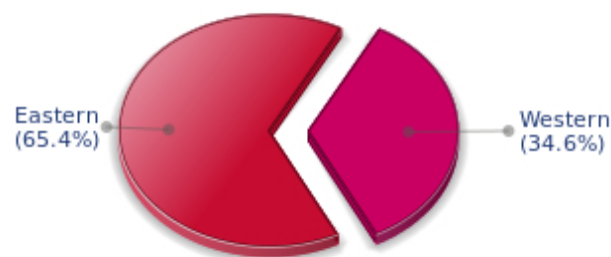
The birth chart is divided into two other parts, Eastern and Western, by the axis linking the Midheaven

to the Imum Coeli.

The Eastern part, on the Ascendant side, shows the person's ego, will, magnetism, and vitality, whereas the Western part, on the Descendant side, symbolizes other people, communication, relationships and their influence, as well as flexibility and adaptability.

Penélope Cruz, here is the planetary repartition in your Eastern and your Western hemispheres:

Your Eastern and Western Hemisphere:



The predominance of planets in the Eastern hemisphere of your chart enables you, Penélope Cruz, to assert yourself and to rely on your determination: you know what you want and you have a tendency to take action and to decide with your personal goals as priorities, even if they can be in contradiction with what others think.

A definite asset... provided that you never make mistakes in your choices. You should pay more attention to your entourage in order to counterbalance your nature and to take advantage of your assets wisely. The danger is that you may be too authoritarian and not conciliating enough. Strong determination coupled with flexibility and acute sense of communication are qualities you should develop.

Your Yin and Yang Polarity

The twelve signs are divided into two polarities, called active or passive, or sometimes masculine and feminine, positive and negative, Yang and Yin. This classification corresponds to two quite distinct tonalities, the first one bringing extraversion, action, self-confidence and dynamism, the second one, introversion, reactivity, reflection and caution. None is superior to the other, each group has its own assets and shortcomings. Odd signs - Aries, Gemini, Leo, Libra, Sagittarius and Aquarius - belong to the first group, whereas even signs - Taurus, Cancer, Virgo, Scorpio, Capricorn and Pisces - belong to the second group.

Your Yin and Yang Polarity



According to the disposition and qualities of your planets and angles, you are rather influenced by Yin energy, the passive polarity, Penélope Cruz: you are quite introverted, imaginative and sometimes discreet, but you are a deep and wise person who is not content with just noisy and flashy things. At times, you doubt but you think that those who don't are a bit... thoughtless. Allow yourself to take more laid-back attitudes and put your reserve aside, because good equilibrium is always healthier.

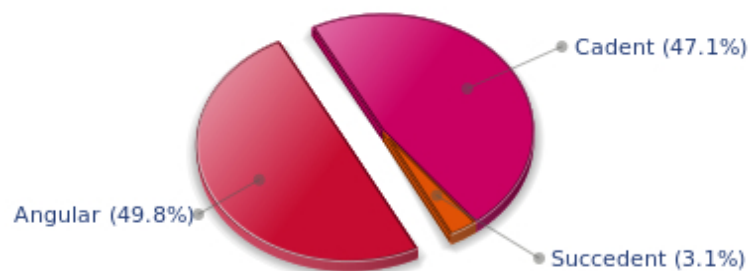
Your Houses' Accentuations

Houses are split up into three groups: angular, succedent and cadent.

The first ones are the most important ones, the most "noticeable" and energetic houses. They are the 1st, 4th, 7th and 10th houses. Their cusps correspond to four famous angles: Ascendant for the 1st house, Imum Coeli for the 4th house, Descendant, opposite the Ascendant, for the 7th house and Midheaven for the 10th house, opposite the Imum Coeli.

Planets are evaluated according to a whole set of criteria that includes comprehensive Western astrology rules. At their turn, planets emphasize specific types of houses, signs, repartitions etc., as previously explained.

Your Houses' Accentuations



Your angular houses, namely, the 1st, 4th, 7th and 10th houses, are very emphasized in your chart, Penélope Cruz: according to the Tradition, they are the strongest and most dynamic houses. Should the rest of your chart concur, angular houses suggest that you are an enterprising, energetic and assertive woman. Indeed, angular houses are said to generate impulsions and to give a powerful and domineering personality.

Unusual fates are often linked to a predominance of angular houses, but this is only a partial indication...

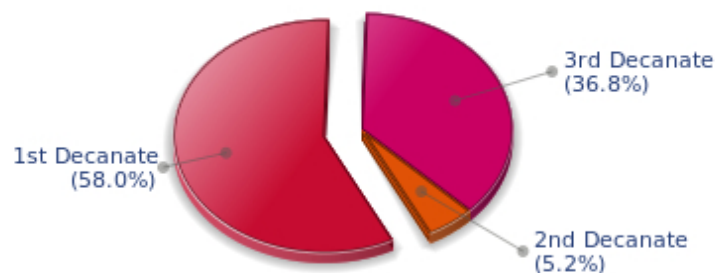
Your Esoteric Decanates

Each sign contains 30 degrees and can be divided into three equal parts: the decanates. The Tradition indicates that specific meanings can be associated to each of the three decanates. Their sphere of activity is usually limited to the Sun sign, however, it is even more interesting to observe the distribution of all the planets in the chart to get an idea of the respective importance of the three decanates, which can complement the description of the personality.

These meanings must be considered with the greatest caution. Indeed, they are minor characteristics that can only underline other outstanding traits of character.

Traditionally, the first decanate highlights the characteristics of the sign where a planet is located. The two other decanates correspond to sub-dominant planets, depending on the nature of each sign. This system leads to a multiplication of meanings and it is impossible to have a clear understanding: here, we prefer to give only the meaning of one decanate in comparison with the other two, within the birth chart as a whole. Again, the greatest caution is needed with regard to this minor indication as it is not always reliable: it is not essential that you read these texts in the beginning. You can get back to them later on, once you have read more important interpretations

Your Esoteric Decanates



The first decanate, which means the part between 0° and 10° of any zodiacal sign, prevails in your natal chart, Penélope Cruz: this decanate is traditionally linked to vitality and physical constitution, and may indicate that you efficiently express your concrete energy on the material and sensual planes.

Annex 2: Karmic Study

The karmic theme is a good complement to the psychological portrait, or natal chart. This analysis is based on the positions of the Lunar Nodes, the Black Moon and the Part of Fortune: they are also called fictitious points and describe the spiritual purpose of your destiny. Because there is in all of us an experience and a quest, our life is an evolutionary journey... provided that we head towards the right direction, of course! Indian astrologers highly prize the Nodes axis (North Node and South Node). It is the Ariadne's thread that we are invited to follow. The Black Moon indicates the sector where we are most likely to transform or to transcend, whereas the Part of Fortune points out the area where we can easily express our specificity.

The Lunar Nodes: a spiritual path

Lunar Nodes have their roots in the Indian tradition and they are based on a simple concept: each of us have a mission of their own, here on earth, a destiny, a course. According to the Indian philosophy, life is a school: the nodal axis describes our past experiences (South Node, our karma, our spiritual inheritance or our previous lives), and our aims on earth (North Node, our Dharma, the purpose of our current incarnation). This is the reason why the study of the lunar nodes is called "Karmic astrology". Here, we shall not step into hypothetical past lives. Wherever our current trends may come from, all that really matters is that we become aware of the purpose of our life, its finality and our dharma. We are likely to understand our life purpose around the age of 37, when the Lunar Nodes return to their natal position.

Your destiny hinges on spiritual values. Early in life, you developed relationship abilities and you showed a healthy curious mind. You are insatiable when it comes to exchanging new concepts but you limit your horizon line to tangible and useful facts. As time goes by, you feel the desire to leap further and to discover new territories or different philosophies. You may have a growing interest in metaphysics or in religions, or you may travel, so as to keep up with your desire for evolution. Never mind! What is essential is that you never stagnate and that the vagaries of life do not take precedence over your thinking process or your spiritual growth. You dream of getting rid of everyday constraints and of reaching another dimension of life pertaining to large spaces and to ideals. You need to live intensely, to discover again and again. You long for a better world? The danger is that you may get trapped in illusions and utopias. But life would be so dull without an ideal!

Your life's purpose is related to your disregard for material goods and dispossession. Whether or not you enjoy comfort, a financial or affective capital, someday, you question your assets and you start anew. Of course, you enjoy life's simple joys. The security granted by stable relationships allows you to cope with possible delusions. But life undertakes to remind you that nothing is eternal here below, the wheel keeps on turning and, at any time, one may irrevocably lose what one thought to possess forever. Paradoxically, ordeals and losses make you stronger: as time goes by, you feel freer, more detached from the values of this world and closer to the essential... The spiritual life can't be bothered with the prosperity sought after by ordinary mortals. As you give up the values that you once thought to be indispensable, you gain in terms of lucidity and, eventually, in terms of tranquillity. Your powers and your inner dimension will then impress many people: do not overdo it!

Lilith or the Dark Moon

The Black Moon is the spark of refusal and distance that is dormant in all of us. Depending on the sign where she is found in your chart, she highlights the desire to transform and to sublimate a part of your life. The Black Moon is unfathomable and mysterious. She gives a different dimension to the sector she

touches. Her manifestations are subtle; nonetheless, she is powerful, implacable, demanding to the extreme... The Black Moon is also called Lilith. She is the inner flame of your heroism and insubordination.

You have the feeling that you are different from your entourage because you are in charge of both a special mission, and an extraordinary destiny. This configuration may indicate an immoderate pride (when the Black Moon is not well integrated enough). However, when she is well integrated (and she will be, as time goes by), the Black Moon forges an exceptional destiny that implies sacrifices, asceticism and solitude to some extent. The danger is to show too strong an intransigence and to be unable to forgive your entourage's weaknesses as well as your own. But it is also where your strength is found: an innate sense of duty, regardless of the price to be paid for a slow ascension.

The Part of Fortune in House

The Part of Fortune is a very ancient fictitious point that depends on the lunar phase at the time of birth. The astrological house tenanted is particularly strengthened. In your chart, the Part of Fortune is in the 11th house: anything that has a human nature catches your attention. Friends, ideals, great humanitarian causes... You have original ideas for the betterment of the world. You do not consider the Tradition – or Traditions – to be immutable and ossified. It is important that you work on a reform or an overhaul of existing institutions: although you do not turn into a revolutionary, you are sensitized to society or educational projects. With the help of your entourage, and because, better than anyone else, you can earn the consideration of your close friends, you will slowly transform your familiar surroundings... since you cannot change the world!

Retrograde Planets

The karmic tradition insists on the issues related to the so-called retrograde planets. They are considered to be the inheritance of a past that was not well experienced, a sort of unfinished business. The interpretations of the retrogradation may seem negative or excessive to you. However, you may relate to a scenario that you have often and repeatedly experienced... as if you underwent several setbacks that all have the same cause. Until the day you become aware of it and you can free yourself from it! Through the slow integration of these planetary energies, you will be able to overcome your difficulties and to pay your karmic debt. Actually, each retrograde planet highlights an opportunity for evolution. Nothing can be achieved without the will to grow spiritually and to defeat your own demons.

Uranus was retrograding on the day of your birth: you have the soul of a rebel and your behaviour may often be tyrannical or extremist. Your manner has brought you setbacks. You lack the flexibility that spares you the pain of forcing your ways through events. The danger may be that you get trapped into rigid patterns and into personal logics incompatible with others'. This is precisely what your life's lesson is about: as years go by, your judgments are more qualified and your attitudes become less cut-and-dried, less stubborn. You must lose the essentially individualistic character of your childhood and be more open to other people's ideas and problems. In other words, a path of love. Without losing your remarkable resolution, you must practice some form of renunciation and be sensitive to various logics that constitute the wealth of your social life.

Neptune retrograding concerns spirituality. You may have expressed early in life a few reluctances about the subtle world of faith. You may have ignored destiny's signs and winks and you preferred to stick to your certainties, to a rigorous and objective control of your life. You dread your own aspirations and you readily trust others': this causes a lack of autonomy and the feeling that you may not receive as much as

you give. However, several delusions teach you that you must relativize your calculating and methodical attitude and open up to the irrationality of love in order to find an inner and more spiritual progression. Embracing the invisible is a process that unfolds as years and experiences go by. Your own generosity increases as you become aware of your entourage's generosity.

Pluto retrograde suggests power issues and mishandled relations: for you, everything comes down to power struggles, submission and domination, Machiavellian manoeuvres, including within your couple... The results are complex behaviours and an obsession for the power to influence people. Yet, life teaches that you must simplify your relations and adopt more transparent attitudes and healthier desires... As years go by, you will tend towards more simplicity and you will slowly discover that human energy can, and must, be at the service of the good, or of well being, in compliance with our individual progression.

N.B: modern astrology attaches less and less importance to the principles of retrograding planets.

Conclusion

A few remarks are needed here in order to allow you to fully take advantage of your astrological portrait: firstly, do not forget that a birth chart is also a photograph of the sky at birth and a structure that not only contains the personality's characteristics, but also its potential evolution.

We all know that, in real life, people begin to know themselves when they are in their forties, or even later. Likewise, several traits of character in a portrait may seem surprising: in most cases, it means that such features are not yet developed.

Some personalities reveal themselves late in life, whereas others are more precocious. It must be remembered that psychological structures are in a state of continuous evolution because they are influenced by unfolding events and gradual maturity. We can never underline strongly enough the "mobile" nature of the personality, throughout a lifetime.

On the other hand, it is difficult to discriminate what is "already present" at this moment in your life when you are reading your chart's interpretation, from what will appear later in the logic of your evolution: you must sort out all the pieces of information provided and, in most cases, you will see that your astrological portrait is helpful for your endeavours to know yourself better.

Finally, several readings of an astrological portrait are usually necessary in order to absorb all its different meanings and to evaluate the relevance of each character trait.

In any case, better self-knowledge obviously contributes to faster personal blossoming, and it is undoubtedly one of astrology's major roles: contributing to know oneself better, in order to improve more rapidly, to deal with one's weaknesses and to avoid its drawbacks, and to take advantage of one's assets as efficiently as possible.
