



**Paulo Coelho's
Astrological Portrait**



Paulo Coelho's Astrological Portrait



Introduction	2
Your Planets, Houses, Aspects, and Natal Chart	4
Preamble	7
Your Planetary Repartitions	8
Your Dominant Modes and Elements	9
Your Dominants: Planets, Signs and Houses	10
Your Style, Behaviour, and Peculiarities	14
Your Sensitivity	18
Your Affectivity	19
The Way You Take Action and Your Sexuality	21
Your Intellect and Your Communication Style	22
Your Goals, Motivations, Career, and Destiny	24
Your Assets and Your Part of Joviality	26
Your Serious Side	26
A Few Special Points	27
Your Isolated Planets	28
Annex 1: Your Minor Dominants	29
Annex 2: Karmic Study	33
Conclusion	35



Paulo Coelho's Astrological Portrait

Introduction

To fully benefit from this portrait, we suggest that you read its introduction and its preamble carefully, and then that to take the time to soak up the interpretations of each chapter. Given the large number of texts, which mirrors the human being's complexity, you may need to go through the contents several times, so as to get a good grasp of their meaning and to know yourself better. This will reward your patience.

The purpose of this report is to describe your psychological portrait and to highlight the most fundamental features on the personal area. The report begins with the analysis of your planetary dominants and outlines your personality's general traits before going into further detail. Minor dominants are analysed at the end of Annex 1, for purposes of clarity. Your report then delineates the various facets of your personality:

In general, even when relationships are not involved, we express ourselves and we feel according to our character and our personal motivations: this is indicated by the Ascendant and the Sun sign which both give details on the way we function. They shed a tremendously important light which allows to figure out your personality. Here, we describe your Sun sign (your inner self), your Ascendant (your behaviour as seen by others), and the ruler of the Ascendant (interesting additional pieces of information about the style of your personality). These descriptions alone cover nearly a third or a half of your psychological signature, depending on your natal chart characteristics.

Then, we address your sensitivity, or in other words, the way you receive things and how you express your emotions ; it works as a constant filter for all your exchanges, even when it becomes a more secondary element in your amorous relationship, because at that moment, affectivity prevails. Sensitivity is the way you perceive things, it is your radar, your daily mood, and at the same time, it indicates how you react to your entourage, on a daily basis. It is what others immediately see of you. In the second paragraph, we explain in which areas of life your sensitivity and your emotions are strongest, therefore, where you are most vulnerable.

After this, it is your affectivity, the way you love and how you charm, that comes into play as soon as you fall in love: the first part indicates its basic structure or its main form. The second part describes the areas where it is best expressed and how you display it, according to your personality.

A third fundamental area deals with your mode of action and your sexuality: how you behave, how you manage to obtain what you want, what kind of desires you have. There are twelve possibilities, very

different from one another. The study discloses the specific one that applies to you. In the second paragraph, we explain in which life areas you may most efficiently take advantage of your capacity for action and for conquest.

Your ways of communicating and of thinking are obviously among the major elements that must be integrated into the delineation and the description of your personality. Indeed, they influence your general behaviour and may modify or enhance the image your project (for instance, extraversion may “compensate” a weak affectivity, but a huge number of cases are possible). An additional chapter indicates the favourite areas where you enjoy communicating, thinking and meeting with people.

Besides, we analyze an even more personal aspect that is important to define and understand what may occur within your couple: each of us have a centre of interest, a privileged manner to be fulfilled or to achieve our destiny; this main motivation is indicated by the positions of your Sun and your chart ruler in the astrological houses and we provide you with its detailed description.

A natal chart contains the potential for specific fulfilment and a whole range of assets, protections and qualities. How does the lucky factor manifest in your personality? In which area can you best exploit your qualities? The answers are precisely revealed to you in this chapter.

On the other hand, we all feel in us a part of vulnerability, doubts and fears. How does this part of solemnity or serious side play out? How is it possible to handle it in order to evolve and to get rid of useless elements? All this information is provided to you in these two paragraphs.

Then, you can discover three additional traits of your personality that must be considered as secondary ones. They deal with your predispositions, which means that they need to be triggered by external events because they are not influenced by your will; let's call it a part of fate. Please, bear in mind that your destiny can unfold only in accordance with what you are: therefore, even if they belong to your more unconscious self, these characteristics are parts of you, definitely.

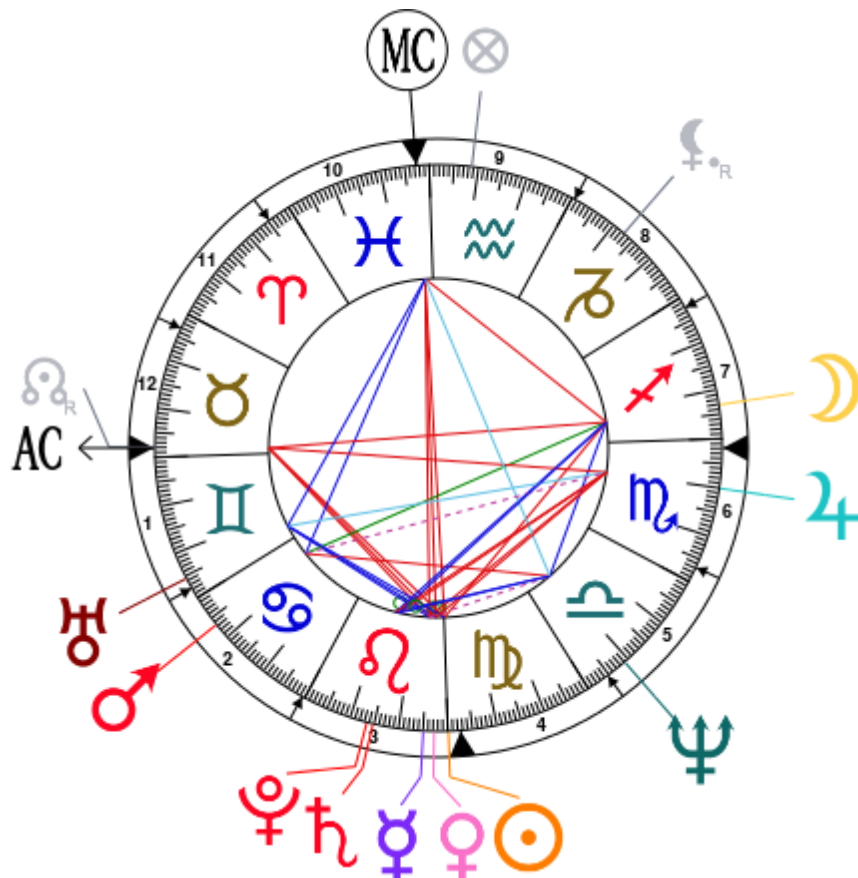
The karmic chart complements the psychological portrait or natal chart. It is based on the positions of the Lunar Nodes, the Black Moon, and the Part of Fortune. These elements of the chart, sometimes referred to as fictitious points, provide information about the spiritual meaning of your destiny. Owing to the fact that we all have in us acquired knowledge and the urge to go on a quest, our life is an evolutionary journey... However, these texts must be read with great caution: this is the reason why you will find this analysis in the Annex 2 of your report.

Your Planets, Houses, Aspects, and Natal Chart

Paulo Coelho, born August 24, 1947, at 12:05 AM, Rio de Janeiro (Rio de Janeiro), Brazil [43.14W ; 22.54S ; 3W00]

Natal Planets				In House	Natal Houses (Placidus)			
☉ Sun	0°07'	♍ Virgo		House 3	House 1	28°07'	♉ Taurus	
☾ Moon	6°52'	♐ Sagittarius		House 7	House 2	27°45'	♊ Gemini	
☿ Mercury	25°02'	♌ Leo		House 3	House 3	29°26'	♋ Cancer	
♀ Venus	27°15'	♌ Leo		House 3	House 4	2°37'	♍ Virgo	
♂ Mars	6°40'	♋ Cancer		House 2	House 5	4°42'	♎ Libra	
♃ Jupiter	19°55'	♏ Scorpio		House 6	House 6	3°11'	♏ Scorpio	
♄ Saturn	14°47'	♌ Leo		House 3	House 7	28°07'	♏ Scorpio	
♅ Uranus	25°31'	♊ Gemini		House 1	House 8	27°45'	♐ Sagittarius	
♆ Neptune	9°06'	♎ Libra		House 5	House 9	29°26'	♑ Capricorn	
♇ Pluto	13°30'	♌ Leo		House 3	House 10	2°37'	♓ Pisces	
♁ Node	27°54' R	♉ Taurus		House 1	House 11	4°42'	♈ Aries	
♇ Lilith	17°18' R	♑ Capricorn		House 8	House 12	3°11'	♉ Taurus	
AS AS	28°07'	♉ Taurus						
MC MC	2°37'	♓ Pisces						

In keeping with the common practice, we consider that a planet posited within 1 degree of the next house belongs to that house. We allow an orb of 2 degrees for the ASC and the MC.



List of Your Active Planetary Aspects

Please find below the list of all the active inter-aspects which are interpreted in this report, in addition to your planets in sign, in house, and all your planetary dominants. Since the aspects between slow-moving planets are of a collective nature, they are not displayed, in compliance with our interpretation rules.

- ★☆☆☆☆ Sun square Moon, orb 6° 44'
- ★★★★★ Sun conjunction Mercury, orb 5° 05'
- ★★★★★ Sun conjunction Venus, orb 2° 51'
- ★★★★★ Sun sextile Uranus, orb 4° 36'
- ★★★★★ Sun square Ascendant, orb 2'
- ★★★★★ Sun opposite Midheaven, orb -2° 29'
- ★★★★★ Moon inconjunction Mars, orb 0° 11'
- ★★★★★ Moon trine Saturn, orb -7° 55'
- ★★★★★ Moon sextile Neptune, orb -2° 14'
- ★★★★★ Moon trine Pluto, orb -6° 38'
- ★★★★★ Moon opposite Ascendant, orb -8° 45'
- ★★★★★ Moon square Midheaven, orb -4° 15'
- ★★★★★ Mercury conjunction Venus, orb 2° 13'
- ★★★★★ Mercury square Jupiter, orb -5° 07'
- ★★★★★ Mercury conjunction Saturn, orb 10° 14'
- ★★★★★ Mercury sextile Uranus, orb -0° 28'
- ★★★★★ Mercury semi-square Neptune, orb -0° 55'
- ★★★★★ Mercury square Ascendant, orb -3° 05'
- ★★★★★ Mercury opposite Midheaven, orb -7° 34'
- ★★★★★ Venus square Jupiter, orb -7° 2'
- ★★★★★ Venus sextile Uranus, orb 1° 44'
- ★★★★★ Venus square Ascendant, orb -0° 51'
- ★★★★★ Venus opposite Midheaven, orb -5° 21'
- ★★★★★ Mars sesqui-quadrant Jupiter, orb -1° 45'
- ★★★★★ Mars square Neptune, orb 2° 25'
- ★★★★★ Mars trine Midheaven, orb 4° 03'
- ★★★★★ Jupiter square Saturn, orb 5° 07'
- ★★★★★ Jupiter opposite Ascendant, orb -8° 12'
- ★★★★★ Uranus trine Midheaven, orb -7° 06'
- ★★★★★ Neptune bi-quintile Midheaven, orb -0° 29'

Meaning of Stars

Stars indicate the strength of the aspects. Two solid coloured stars (there are half-stars also), mean that the aspect is powerful enough to be noticed at the first reading.

We strongly advise that you read the paragraphs displaying less than two stars later on, after you have absorbed the full import of the other texts.

The yellow colour indicates a soothing and conciliating aspect, and the red colour, a dynamic and tense aspect. The red aspects enable you to evolve, to take action, and to learn to turn your "weaknesses" into assets through your life experiences. The yellow aspects are innate strengths on which you rely in order to grow better with the former...

Preamble

When interpreting a natal chart, the best method is to start gradually from general features to specific ones. Thus, there is usually a plan to be followed, from the overall analysis of the chart and its structure, to the description of its different character traits.

In the first part, an overall analysis of the chart enables us to figure out the personality's main features and to emphasize several points that are confirmed or not in the detailed analysis: in any case, those general traits are taken into account. Human personality is an infinitely intricate entity and describing it is a complex task. Claiming to rapidly summarize it is illusory, although it does not mean that it is an impossible challenge. It is essential to read a natal chart several times in order to absorb all its different meanings and to grasp all this complexity. But the exercise is worthwhile.

In brief, a natal chart is composed of ten planets: two luminaries, the Sun and the Moon, three fast-moving or individual planets, Mercury, Venus and Mars, two slow-moving planets, Jupiter and Saturn, and three very slow-moving planets, Uranus, Neptune and Pluto. Additional secondary elements are: the Lunar Nodes, the Dark Moon or Lilith, Chiron and other minor objects. They are all posited on the Zodiac wheel consisting of twelve signs, from Aries to Pisces, and divided into twelve astrological houses.

The first step is to evaluate the importance of each planet. This is what we call identifying the dominant planets. This process obeys rules that depend on the astrologer's sensitivity and experience but it also has precise and steady bases: thus, we can take into account the parameters of a planet's activity (the number of active aspects a planet forms, the importance of each aspect according to its nature and its exactness), angularity parameters; (proximity to the four angles, Ascendant, Midheaven, Descendant and Imum Coeli or Nadir, all of them being evaluated numerically, according to the kind of angle and the planet-angle distance) and quality parameters (rulership, exaltation, exile and fall). Finally, other criteria such as the rulership of the Ascendant and the Midheaven etc. are important.

These different criteria allow a planet to be highlighted and lead to useful conclusions when interpreting the chart.

The overall chart analysis begins with the observation of three sorts of planetary distributions in the chart: Eastern or Western hemisphere, Northern or Southern hemisphere, and quadrants (North-eastern, North-western, South-eastern and South-western). These three distributions give a general tone in terms of introversion and extraversion, willpower, sociability, and behavioural predispositions.

Then, there are three additional distributions: elements (called triplicity since there are three groups of signs for each one) - Fire, Air, Earth and Water - corresponding to a character typology, modality (or quadruplicity with four groups of signs for each one) - Cardinal, Fixed and Mutable - and polarity (Yin and Yang).

There are three types of dominants: dominant planets, dominant signs and dominant houses. The novice thinks astrology means only "to be Aries" or sometimes, for example, "to be Aries Ascendant Virgo". It is actually far more complex. Although the Sun and the Ascendant alone may reveal a large part of the character - approximately a third or a half of your psychological signature, a person is neither "just the Sun" (called the sign) nor just "the first house" (the Ascendant). Thus, a particular planet's influence

may be significantly increased; a particular sign or house may contain a group of planets that will bring nuances and sometimes weaken the role of the Ascendant, of the Sun sign etc.

Lastly, there are two other criteria: accentuations (angular, succedent and cadent) which are a classification of astrological houses and types of decanates that are occupied (each sign is divided into three decanates of ten degrees each). They provide some additional informations.

These general character traits must not be taken literally; they are, somehow, preparing for the chart reading. They allow to understand the second part of the analysis, which is more detailed and precise. It focuses on every area of the personality and provides a synthesis of all the above-mentioned parameters according to sound hierarchical rules.

As explained in the introduction of your Psychological Portrait report, minor dominants are analysed at the end of Annex 1, for purposes of clarity.

Your Planetary Repartitions

Each quadrant is a combination of the four hemispheres of your birth chart and relates to a character typology. The Southern hemisphere – the top of your chart, around the Midheaven – is associated with extraversion, action, and public life, whereas the Northern hemisphere prompts to introversion, reflexion, and private life. The Eastern hemisphere – the left part, around the Ascendant – is linked to your ego and your willpower, whereas the Western hemisphere indicates how other people influence you, and how flexible you are when you make a decision.

Your Four Quadrants

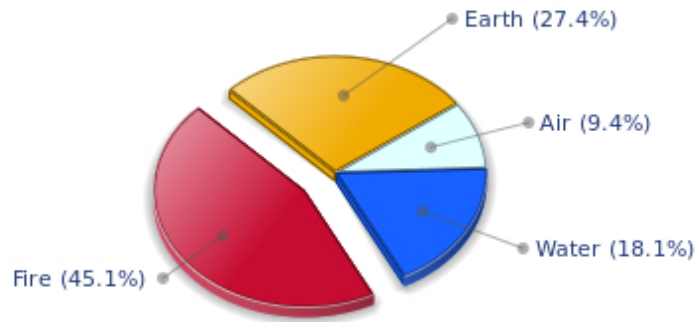


Paulo Coelho, the nocturnal North-eastern quadrant, consisting of the 1st, 2nd and 3rd houses, prevails in your chart: this sector favours self-assertion and material security to the detriment of your perception of others. You consider self-transformation to be a hazardous adventure. You are inclined to seek stability and you tend to protect yourself with your actions. Possession, acquisition but also communication, without opening up too much, are part of your deep motivations. You are rather autonomous and constant, however it is important that you pay more attention to others, so that you can improve your outcomes.

Your Dominant Modes and Elements

Paulo Coelho, here are the graphs of your Elements and Modes, based on planets' position and angles in the twelve signs:

Your Four Elements



Paulo Coelho, Fire is dominant in your natal chart and endows you with intuition, energy, courage, self-confidence, and enthusiasm! You are inclined to be passionate, you assert your willpower, you move forward, and come hell or high water, you achieve your dreams and your goals. The relative weakness of this element is the difficulty to step back or a kind of boldness that may prompt you to do foolish things.

Like the majority of Earth signs, Paulo Coelho, you are efficient, concrete and not too emotional. What matters to you is what you see: you judge the tree by its fruits. Your ideas keep changing, words disappear, but actions and their consequences are visible and remain. Express your sensitivity, even if it means revealing your vulnerability. Emotions, energy and communication must not be neglected; concrete action is meaningless if it is not justified by your heart, your intellect or your enthusiasm.

Air is under-represented in your natal chart, with only 9.43% instead of the average 25%. Air symbolizes the values of communication, exchanges with others, but also adaptability and flexibility abilities: if you don't get out of your cocoon to talk, to show interest in others, and to socialize, you may have problems understanding others. Because of your lack of flexibility or of your refusal to adapt yourself, you may be suddenly overwhelmed by events. You should get into the habit of talking, of phoning, and of thinking in terms of "mobility, flexibility, adaptability, change" in every circumstance. It will spare you so many troubles!

The twelve zodiacal signs are split up into three groups or modes, called quadruplicities, a learned word meaning only that these three groups include four signs. The Cardinal, Fixed and Mutable modes are more or less represented in your natal chart, depending on planets' positions and importance, and on angles in the twelve signs.

Your Modes



The Fixed mode corresponds to a majority of elements in your chart, Paulo Coelho, and represents the desire for security and durability: you are able to concretely appreciate a situation and its stability. You definitely prefer to play the role of a loyal, obstinate and hard-working person, rather than to try new and risky experiences - beware, however, not to confuse obstinacy with intransigence. You structure, cement, and strengthen everything you find on your way: it is your nature, although you are not especially interested in swiftness: slow and steady...

Your Dominants: Planets, Signs and Houses

The issue of dominant planets has existed since the mists of time in astrology: how nice it would be if a person could be described with a few words and one or several planets that would represent their character, without having to analyse such elements as rulerships, angularities, houses, etc!

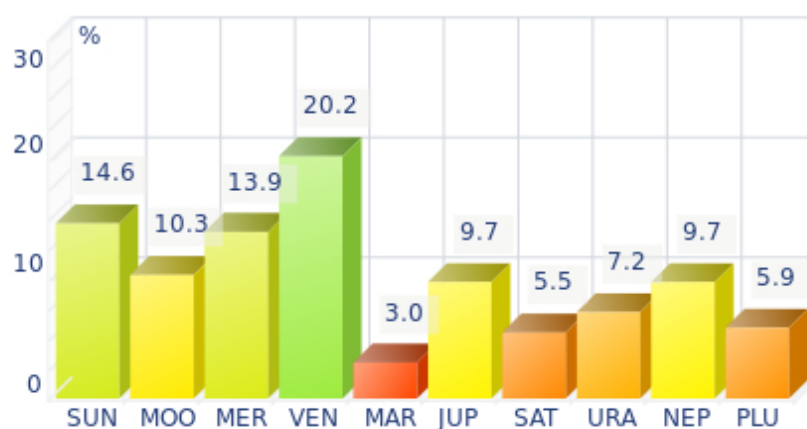
The ten planets - the Sun throughout Pluto - are a bit like ten characters in a role-play, each one has its own personality, its own way of acting, its own strengths and weaknesses. They actually represent a classification into ten distinct personalities, and astrologers have always tried to associate one or several dominant planets to a natal chart as well as dominant signs and houses.

Indeed, it is quite the same situation with signs and houses. If planets symbolize characters, signs represent hues - the mental, emotional and physical structures of an individual. The sign in which a planet is posited is like a character whose features are modified according to the place where he lives. In a chart, there are usually one, two or three highlighted signs that allow to rapidly describe its owner.

Regarding astrological houses, the principle is even simpler: the twelve houses correspond to twelve fields of life, and planets tenanted any given house increase that house's importance and highlight all relevant life departments: it may be marriage, work, friendship etc.

Paulo Coelho, here is the evaluation diagramme for your planets:

Your Dominant Planets



The three planets that are most highlighted in your chart are Venus, the Sun and Mercury.

With Venus among your dominant planets, one of your first reflexes is... to please! Your look, your charm, and your seduction are omnipresent elements in your behaviour.

Your approach to things is connected to your heart, and for you, no real communication can flow if your interlocutors exude no sympathy or warmth. Cold and logical reasoning, clear thoughts and good sense are not important to you: if there is no affective bond with your environment, no connection can be established with the Venusian that you are, and nothing happens.

You have a strong artistic side, and you never neglect subjective but clear concepts such as pleasure, beauty, and also sensuality. However, sometimes to the detriment of efficiency, durability, logic, and... detachment.

One of the dominant planets in your natal chart is the Sun. He symbolizes will, magnetism, sense of honour and dignity. You are a Solar being, and you often display charismatic and leadership qualities. Your warmth and your persuasive power lead you far away from pettiness. You enjoy thinking big and, consequently, you move forward according to what you decide.

Your Solarian weakness may be related to the sin of pride or to excessive authority. The frontier between pride and vanity is tenuous: be careful not to overstep it and to keep the nobleness of heart that is part of your charm.

With Mercury among your dominant planets, you are certainly cerebral, nervous, swift, curious, quick-witted, and you love to communicate. Your psychological pattern is intellectual, all the more so since Mercury is important, with its whole set of assets but also of weaknesses, obviously.

Your sensitivity, emotions, and heart's impulses give precedence to thinking, which can lead people to believe that you are a playful and witty but heartless person, intellectualizing situations and juggling with words and numbers whilst ignoring human aspects of things. Of course, it is said that cats always land on their feet - this is your Mercurian strength and your trump card!

Your weakness lies in your nervousness, and you may miss your goal because of your "over-intellectualization" that may be detrimental to other kind of energies such as instinct, spontaneity, heart, sensitivity, etc.

Your Dominant Signs



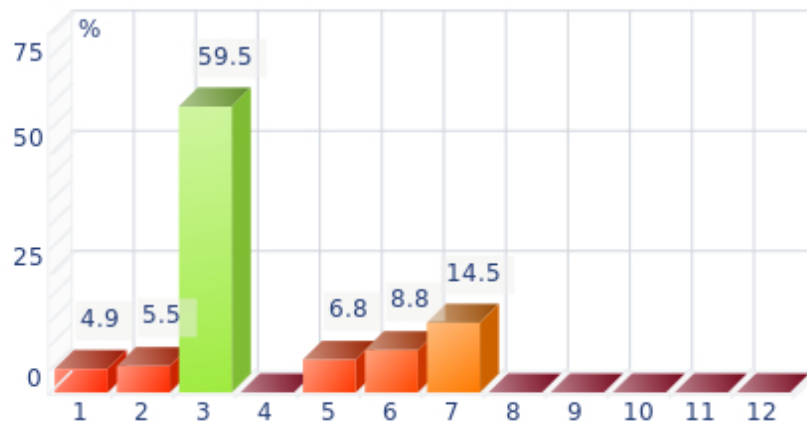
In your natal chart, the three most important signs, delineated according to the above-mentioned criteria, are, in decreasing order of strength, Leo, Virgo and Taurus. They are often prominent because your Ascendant and your Sun are posited there. However, it is not always the case: it may be because they are occupied by a cluster of planets, by a planet near an angle other than the Midheaven and the Ascendant, or because two or three planets are very active and form numerous aspects from these signs. Therefore, you partly take on the three signs' characteristics, which are somehow superimposed on your natal chart, and all the more so if any of the signs in question is highlighted.

With Leo as a dominant sign, you naturally shine brightly. Your dignity, your sense of honour, and your generosity can almost turn you into a solar mythological hero, a knight or a lord from the ancient times. People may blame you for your selfishness, your pride or your somewhat loud authority, but if you are self-confident, kind-hearted and strong-willed, it surely makes up for your little flaws, as long as they remain moderate...

Virgo, associated with perfectionism, numbers and reason, is among your dominant signs: you inherit its sense of responsibility and tidiness, a clear mind, an unflinching logic, as well as a need to be useful and to fulfil your task to the best of your abilities. Obviously, people may think that you are too modest or reserved, suspicious or pessimistic because of your exceedingly critical mind, but aren't logic and wisdom great qualities? Of course, they are. Moreover, you keep your feet on the ground, you never behave irrationally and you are helpful and hardworking - what more can you ask for?!

With the Taurus sign so important in your chart, you are constructive, stable, and sensual. Good taste, sense of beauty, manners, and unflinching good sense - all these qualities contribute to your charm and seductive power. Furthermore, if some people criticize your slow pace and your stubbornness, you rightly reply that this is the price for your security, and that you like the way it is - slow and steady....

Your Dominant Houses



Houses 3, 7 and 6 are the most tenanted ones in your natal chart. To compute their strength, planets and angles are weighed according to various astrological criteria such as swiftness, activity, angularity, rulership etc. From the analysis of the most tenanted Houses, the Astrologer deduces the fields of activity that are most relevant to you, be it because of what you are experiencing, or what you may experience in the future, or because of your deep inner motivations.

As the 3rd house is one of the most important houses in your chart, communication plays a major role in your life or in your deep motivations: frequent short trips, open-mindedness - which may offset a lack of mutable signs for instance - listening, discussion, interest in learning, knowledge accumulation or long-term studies, etc., are all areas that greatly appeal to you and are part of your daily life.

Your 7th house is one of your dominant houses: it symbolizes other people, marriages, associations, contracts, and partnerships. Your personal achievement and maybe your problems - depending on the rest of your chart - are mainly influenced by your rapports with others, the area in which you tend to commit yourself a lot. You appreciate communication, and you give importance to others' opinions. Success requires the support of others, which seems obvious and natural to you. Your marriage generally contributes to your fulfilment.

Your 6th house is quite emphasized and indicates interest in work and daily occupations that take up a lot of your time: in analogy with Virgo, this house inclines towards perfectionism and training; somehow, you may be fulfilled through the process of being useful and investing your energy in your work. An environment appealing to you may be involved - your colleagues, for example - or a passion for one of these daily occupations. Medical positions or pets may play a role in your life; or ancillary love affairs too... These are a few possibilities indicated by an important 6th house.

Your Style, Behaviour, and Peculiarities

What is commonly known as "sign" indicates the position of the Sun in the Zodiac. The Sun highlights all the characteristics of the sign he tenants. According to astrology traditional rules, these characteristics are all the more pure and exact when the Sun is strong in the sign, or when the sign is particularly highlighted within the chart. Here, we indicate the pure characteristics of the sign but you must bear in mind that they may only shed a light on a particular aspect of your personality. Indeed, the sole sign of the Sun, or of the Ascendant, can never describe an astrological chart because it depends on the degree of strength of the said sign in your chart.

Another important point must be underlined. Contrary to the Ascendant, which clearly describes your appearance, your vitality, your physical constitution, your spontaneous behaviour and the image you project, your Sun sign describes your inner self, which you may not completely be aware of, and which may emerge gradually as you mature: it is about your inner personality that you reveal only to the members of your entourage whom you trust. The Sun sign is likely to be the final form of your personality, once it has evolved in line with the energies of the other parts of your chart, the beginning of which is seen in the Ascendant, your external "bark".

The Ascendant is one of the major components of your natal chart. It is the zodiacal sign that rises in the East at the very moment of your birth. To calculate it, it is therefore necessary to know your exact time of birth.

It provides with a wealth of information on your personality. It is one of the key features that allows the analysis of several parts of you, such as your appearance, your character as it is initially perceived and your immediate behaviour. It describes the external aspect of your personality which you always display, but it also describes your physical constitution in the long-term, in other words, your health.

Please be aware that, in spite of the importance of the Ascendant, the accuracy of its description depends on how strongly highlighted it is in your natal chart. We use the entire set of astrological rules to assess the strength of the Ascendant. In most cases, the Ascendant is as revealing as your "sign", i.e., the sign where the Sun is posited at the time of birth.

You were born under the sign of Virgo and your Ascendant is in Taurus

Before broaching the details of the meaning of your Sun and your Ascendant, as a preamble, we offer a brief generic interpretation of their combination in your chart:

With you, one can rest assured that one never goes short of anything! Since Virgo is thrifty and meticulous, and Taurus is greedy and productive, there is no doubt that the members of your entourage and your guests are perfectly well attended to. Your Taurus Ascendant prompts you to behave with gentleness and liveliness, which delights your friends, except when you are annoyed, in which case, you display a strong and scornful indifference which may degenerate into thundering fury. In normal circumstances, your Virgo Sun displays moderation and tolerance, but it never misses an opportunity to criticise. Indeed, you excel at spotting people's flaws, and your cutting remarks usually affect the poor imperfect thing that your interlocutor is. Nevertheless, it would be wrong to think that you are ill-intentioned because you only try to be helpful, and you are no less intransigent about your own

shortcomings. Although Virgo and Taurus are not the most daring signs of the Zodiac, their unfailing loyalty and their healthy humility are major assets.

You were born with the Sun in Virgo

Psychologically speaking, your nature is nervous and secondary. Before you take action, you cautiously ponder over things and you review any possible alternative and reaction. You strive systematically to find the best possible response to any given problem. You are a perfectionist above all and you have no rest until you optimize a situation, in each and every area, be it professional, pragmatic, aesthetic or in pleasure. You do not accept spontaneity and, to fully enjoy life and go further, you consider that demanding the best is the least you can do, even though it is detrimental to the rough force associated with your instinct. The intellectual element intervenes before both the physical ones and your feelings: it is one of the essential clues to understanding your personality.

As you are born under this sign, you are cerebral, clear-sighted, focused on details and on numbers, analytic, serious, competent, reasonable, modest, tidy, organized, spruce, industrious, provident, honest, loyal, reserved, shy, helpful, willing to progress, talkative, perfectionist, logical, hardworking, tactful, patient, precise, concrete, spiritual. You can also be narrow-minded, calculating, irritating, petty, pernickety, hung up, anxious, cold, repressed or sarcastic.

In love, Sir, your inner self is different from what you seem to be: you are sensual and affectionate and you find it hard to show it because your nature is to be cautious, reserved and analytical. You think too much, which gives you a cold and distant look. However, it is a mask that you wear and take around with you. As soon as you feel in confidence, you become able to take off the mask and to reveal your true face. You are critical and perfectionist and you must be cautious enough to keep your comments to yourself, especially in this particular area.

In the fields of sex and affection, real confidence is an imperative pre-requisite. Otherwise, it is impossible for you to show your true self and to remove the mental screen that proves so efficient in other areas, but that is very burdensome and inhibiting in the private sphere.

When you manage to do so, you become a charming, sensual and endearing partner and you communicate easily thanks to Mercury who rules your sign.

You are loyal, organized, conformist, more suited for celibacy. But once you take your decision, you are quiet and tidy and you will bring up your children according to the best traditional principles.

Because Virgo is a dual sign, there may be two marriages, or there may be a love affair in parallel.

Your Ascendant is in Taurus

Peace, joy of life and sensuality are essential to you: You have a simple and quiet nature. You easily find happiness because you are not competitive. In addition, your relaxed attitude and your common sense always take you to places where you are happy, even though you are not the number one, even though you do not move in haste. The important thing for you is to construct, with patience and persistence. These two qualities yield strong, steadfast, and sustainable efforts that can withstand any pitfalls.

You are gentle, with a slow thinking process, but once you have opted for an orientation, nothing, no

one, can make you change your mind. You loathe changes in general, and once you have taken the few major unavoidable decisions in the course of your life, you are on track!

As you are born under this sign, you are loyal, steadfast, strong, patient, enduring, persistent, attached, sensual, realistic, constructive, tenacious, with a strong need for security. But you may also be stubborn, rigid, possessive, materialistic, static and slow.

In love, Sir, more often than not, your passions are strong. It may take you some time to be moved, but once your choice is made, it is a lasting one and you are particularly endearing and loyal. You are not interested in infidelity or in having numerous partners.

Your love emerges slowly but it grows in depth, like a root which solidifies with time. You are not too romantic because you are so practical and conventional... but your style and your sexiness compensate for your lack of idealism. You tend to associate the concept of marriage with that of lifestyle or of the benefits that come with it.

Your physical urges are pressing; you are sensual and pleasure takes an important place in your life. You appreciate partners who cook like a cordon-bleu and who may cause a few gastronomic excesses, but you readily accept them.

The ruler of your chart is in Leo

The ruler of the Ascendant, also referred to as the chart ruler, brings a few interesting nuances to the meanings provided by the Sun and the Ascendant. The sign in which the ruler of the Ascendant is posited fine-tunes the style of personality described by the Sun and the Ascendant. It may strengthen it if the sign is identical to either of them.

The ruler of the Ascendant, Paulo Coelho, is Venus. In the sign of Leo, it may endow you with authority and a certain inclination for prestige. Generous and noble, you loathe pettiness. You are not aware that you sometimes irritate the members of your entourage because of your excessive pride or your self-centredness.

Aspects to your Ascendant

Several planets form an aspect with your Ascendant, Paulo Coelho. Therefore, in their specific way, they modify your behaviour and your personality, which do not take on the pure characteristics of your Taurus Ascendant only, but which are a blend of its characteristics with those of the said aspects.

★★★★☆ Venus square Ascendant, orb -0° 51'

In certain circumstances, Paulo Coelho, you tend to adopt an attitude that is not necessarily in line with your real emotions. This discrepancy between your behaviour and your feelings, caused by Venus, may disconcert the people you mix with. Have self-confidence, don't be too pushy or... withdrawn, and forget your fears. Then, people can have a better perception of your personality, and you can harvest the fruits of your efforts.

★★★★☆ Sun square Ascendant, orb 2'

There may be a contradiction between your will and your external appearance, Paulo Coelho, which slows down your natural spontaneity and in some circumstances, gives rise to doubts regarding your

behaviour towards other people and the need to be true to your own beliefs. There is certainly nothing serious with this minor dissonance between the Sun and your Ascendant, only choices that are to be made, so as to remain in harmony with yourself.

★★★★★ Mercury square Ascendant, orb -3° 05'

Sometimes, you find it hard to behave the way you wish, Paulo Coelho. It is because of Mercury who is not really in phase with your Ascendant. You happen to dislike the way you communicate, either because you exceedingly intellectualise everything, or on the contrary, because you do not make the effort to thoroughly analyse the situation when you are with other people.

★★★★★ Jupiter opposite Ascendant, orb -8° 12'

In astrology, Jupiter is the planet of greater fortune. He is in opposition to your Ascendant, Paulo Coelho. However, he is also in conjunction with the opposite angle, the Descendant, which symbolises your rapport with other people. So, we are not dealing here with a dissonance, but with assets for your communication skill, and a form of natural benevolence which arouses sympathy. Although your behaviour is somehow oriented towards other people, and therefore not the direct expression of yourself, owing to this Jovian facet, your manner is lenient, understanding, and optimistic, which is usually appreciated and offers you many satisfactions in the area of partnership, and harmony in your marriage.

★★★★★ Moon opposite Ascendant, orb -8° 45'

The Moon is in opposition to your Ascendant, Paulo Coelho. It is not a dissonance, strictly speaking, since at the same time, the Moon is in conjunction with your Descendant. Your sensitivity is oriented towards other people, and you are endowed with some sort of radar which enables you - sometimes too quickly - to feel other people's sympathy or hostility towards you. As a consequence, although your behaviour is flexible and adaptive, it is also less self-confident than it would be if you were less concerned about gossips.

Your Sensitivity

Your nature is optimistic and emotional, Paulo Coelho, and you are caught up in two incompatible longings: you are fond of exoticism and independence of movement, but at the same time, you feel comfortable in a form of middle-class attitude and conformism; in general, it translates into a succession of moods, now quiet and well adapted to the situations you experience, now marked by an irresistible desire for change and revival. You have a good and naïve nature, with a lot of self-confidence. Your emotionalism prompts you to live intensely a variety of numerous emotional experiences, a bit scattered, but with all the stimulations you need to be a balanced person. Your pleasant and welcoming attitude wins you some degree of popularity, all the more so because, despite your thirst for adventures that may scare away some people, you adjust to your environment's customs so easily.

You are dependent on your relationships for a large part, Paulo Coelho, and generally, you can open up only with people you are close to. Contacts are very important for you, however, you tend to listen to the one who spoke last. In fact you are easily influenced.

You will certainly find your dream wife and you will develop a close and intense relationship with her.

You are moody and impressionable. Your relationships with your audience are always put on a pedestal and you have a tendency to constantly change your personal image according to the persons you are dealing with and the reactions you get from them.

★★★★★ Moon sextile Neptune, orb -2° 14'

This harmonious Moon-Neptune aspect indicates an exceptional receptivity. You are sensitive to ambiances and you can grasp what is at stake in any given situation. You can pick up things in the general atmosphere that the majority of people miss out. Your deep intuition allows you to feel the subtlest details, that « little nothing » which is the key to behavioural patterns. Inspiration is your guide and imagination accompanies your daily rhythms. Mysteries, psychology, esoterism, fantasy, the supernatural... one of these fields, at least, is of concern to you. You pay utmost attention to your inner life, to moments of tranquillity when you relax, when you allow your mind to wander at will. The danger is that you may seek refuge in the imaginary and that you shirk reality.

★★★★★ Moon inconjunction Mars, orb 0° 11'

The Moon-Mars dissonance suggests touchiness and sometimes, aggressiveness. You are irascible and very sensitive to all sorts of threats and dangers. You react very quickly, too hastily. To protect your well being, you must learn to control your mood, to coordinate your actions and to balance your opinions. You are often disturbed by plain facts: Either you seek refuge in your intimate realm and refuse to face the truth or, on the contrary, you are engaged in altercations, which forbid all tranquillity. It is important that you balance these two tendencies and that you alternate moments of action with phases of carelessness and relaxation. These two attitudes are relatively irreconcilable.

★★★★★ Moon trine Pluto, orb -6° 38'

You are a riddle for people... and for yourself. This harmonious Moon-Pluto aspect arouses your desire to understand and to express elements hidden in your unconsciousness. You are interested in the occult, in laws that rule beings and things in the dark. You like to pull strings and to manipulate situations without people's knowledge in order to remain mysterious. You feel fine when you are not in the limelight, but you intervene in the dark, with subtlety. Your intimate behaviour reveals the distance that you strive to keep in order to protect your inner life. You gladly cultivate the angel of the bizarre, even in

your life habits and in your daily rhythms.

★★★★★ Sun square Moon, orb 6° 44'

In your chart, two polarities are clearly opposing - or complementing – each other: on the one hand, solar values, the image you project and the models you follow. On the other hand, lunar values, moments of letting-go and well being through casualness. When you commit yourself in a project, it is often to the detriment of your peace of mind. Conversely, you completely feel that you are your true self only when you are no more under the scrutiny of the outside world. Therefore, you separate your social and professional activities from your private life and you seldom match the requirements of the former with those of the latter. It may be a hurdle, a fundamental anxiety. It may also be an obvious asset, when it is well integrated: in that case, you succeed in assigning to yourself, and in fulfilling, objectives that are not necessarily in line with your intimate natural demands, which are preserved and separated from your intentions, your ambitions and your expectations. Thus, a strong will can turn this Sun-Moon hard aspect into a rich instrument for creativity. A shadow zone, or uncertainty, still remains: on the affective plane, you are very sensitive. May be too much, to the extent that you become vulnerable in many circumstances. Because in different periods of your life, your landmarks (solar) and your intimate balance (lunar) will be simultaneously challenged.

★★★★★ Moon trine Saturn, orb -7° 55'

This harmonious Moon-Saturn aspect is an element of stability for your private life. Your daily life lives up to your demands, you are totally true to yourself and logical through your very intimate behaviour. You do not choose the easy way out: on the contrary, it is in difficult situations that you are at your best. It is very unlikely that you become destabilized by trifles. This aspect indicates stability and also perfectionism. You are longing for a private life respectful of your heart of hearts and your genuine desires. Your well being is at this price, and its quest remains perpetual. Despite your reserved private behaviour, your emotions run very deep. You have a strong need for protection and for security. Your aspirations lead you towards contemplation or studies, more than towards social facilities.

Your Affectivity

In your chart, the Sun is in Virgo and Venus, in Leo. Your solar and Venusian signs agree as much as fire and water! The natural reserve of the Sun in Virgo reacts to the excited and burning character of Venus in Leo. The modesty of the former opposes the passion of the latter. This contradiction may be part of your richness but it does not facilitate the consistency of your attachments: when you love, when you give free rein to your desires and your affections, you are Leo... unyielding, passionate, demanding and extremist. You are conquering, too, even domineering. However, your Sun in Virgo does not feel too comfortable in this style. During your periods of defence and of withdrawal, love fever turns into a reasoned and organized retreat. Your behaviours may be paradoxical: you are sensitive to flatteries but you pretend to be indifferent. You are enthusiastic when your desire is aroused, but you project a more balanced, distant and discreet image. It is necessary that your partner feel the dormant volcano that is often hidden by your will to control. Without that will, you would lose all your landmarks. The adventure is wildly alluring, but you hesitate to play the game and to indulge in frenzy, absolute and destabilizing infatuations. When the configuration is well integrated, it allows you to master various styles and to experience devouring passions... without being devoured!

You are so proud and generous, Paulo Coelho, that the power of your love contains in itself your

vulnerability. However, this is precisely what makes you charming and original. You are loyal and straightforward and you need to love as much as you need to be loved. Both feelings are tightly linked and there is a real danger that love is broken up by trivial misunderstandings, just because your touchiness is affected. You are demonstrative, brilliant, and even dramatic, with a legendary generosity. For you, everything is, or must be, excessive: gestures of love towards your partner, your presents, your comfort and the luxury, which marks your outings and your travels. You are physically a lion, at least, you have its sexual appetite; you are voluptuous and passionate. Flexibility is the only thing that is out of your reach, in the ways you show your love, as well as in your responses to annoying events.

With such a configuration, Paulo Coelho, you are inclined to scattering regarding the expression of your feelings which can easily get carried away in your multiple relationships or within your surroundings. The medium to express your feelings often consists in shared interests for cultural, journalistic or scientific knowledge and frequent short trips. In a way, they lead you to open up more easily, may be because you want to ensure that you don't commit yourself more seriously than you really wish to. Correspondences are high on your agenda, ranging from exchanging letters, via the Internet - oh virtuality...! - to telephone talks. Indeed, you tremendously enjoy communicating in this superficial and a bit distant fashion where you know best how to open up and blend love and friendship without asking yourself too many questions. You are sometimes a SMS champion, always happy with changes and thoughtlessness. For you, undertaking a sole commitment is near to impossible....

★★★★★ Mercury conjunction Venus, orb 2° 13'

This aspect sensitizes you to games of seduction. You like to multiply romantic undertakings, you invent new reasons to seduce or to be seduced. Although your romantic life is not a model of stability, it is full of discoveries, varied emotions, both sensual and cerebral. You know how to earn your entourage's liking through your acute sensitivity. You play around with feelings, with relationships and with love... Mercury and Venus commonly share the capacity to sensitise to human topics. Your receptivity towards others is high. Your broad-mindedness goes hand in hand with your heart's generosity. You pay particular attention to the way people look at you and the effect you make when you meet or exchange with someone. Actually, you expect a lot from others: acknowledgement of your qualities, as well as esteem and consideration. You may also be touchy beyond what you may give to think. In many instances, relationship games may turn out to be more serious than expected.

★★★★★ Sun conjunction Venus, orb 2° 51'

This aspect gives a strong concern about the image you project. You pay a lot of attention to the impression you make and to the charm you exude. You need to know that you can rely on your seduction capacity and earn the liking of your entourage. What people think is important to you and you try to meet your close friends' expectations. You certainly want to please them, but above all, you need their attention. You are seeking pleasure, esteem and affection. But ideals and desires make up a whole: you can be at your best only with those who naturally attract you and for whom you have an esteem that is independent from facts. Your feelings are a response to your quest of the absolute: the persons you find likeable are adopted. Other people are rejected irrevocably! Your character is very affective and it constitutes an asset in many circumstances. Your capacity to seduce, to gain support and to earn esteem is above average. The only danger may be that you abide by the current fashion and trend more than by your own motivations and by what is essential, for the sake of appearances.

★★★★★ Venus sextile Uranus, orb 1° 44'

Your charm lies in the originality of your approach to love and in your uncompromising attitudes. Your motto? Freedom of love, whatever the price! Should your sentimental life become dull, you find a solution: you are romantic and you reinvent your couple's life, you give a new and unexpected momentum to your emotions. You create the kind sharpness that contributes to your exceptional affective life. You do not fear love at first sight or blazing passions. On the affective plane, you know where you are heading for, whom you love ... or love not. There is an indisputable intransigence. The heart impulses are irrevocable and implacable. You dream of a sentimental life that fulfils your aspirations and you use all possible means to achieve your ideal. Even though you may have to make the necessary sacrifices.

★★★★★ Venus square Jupiter, orb -7° 2'

This Venus-Jupiter dissonance indicates a strong will to seduce. However, there may be discrepancies between your words and your actions, as well as between your behaviour and your instinctive reactions. You may be carried away by a maelstrom of emotions, feelings and pleasures and you do not consider the possible consequences of your superficial attitude. Therefore, the apparent state of grace may turn into delusion. Proprieties and necessities of the moment forbid you to experience your desires. What you deem reasonable does not suit your heart's impulses. What a dilemma... Hopefully, as time goes by, you may reconcile your desires, your life patterns and the reasons of your heart with those of your mind.

The Way You Take Action and Your Sexuality

It is difficult to find a more sensitive person than you, Paulo Coelho. You are able to contain your aggressiveness and it may be hard for you to exteriorize your feelings. You are usually passive and you draw your strength from inertia and resistance more than from the will to take action. Your mood is changing, you show little of yourself and you may surprise with your inopportune reactions that come late, when people have forgotten what it was all about. The only area where you express yourself with zeal and where your actions are successful is the area of home or, more symbolically, in the fields where you can achieve security. In other words, you need to feel comfortable before you can move, in concrete matters as well as in sexuality.

Paulo Coelho, your capacity for action perfectly matches your personal enrichment and enhances your earning abilities! It is easy for you to engage into fights aiming at ensuring your material security, as it is the best outlet for your energy: it must serve a purpose, otherwise why bother? Consciously or not, your ardour is going full steam ahead for the success of your business and the protection of your interests.

This energy may also be understood in a figurative sense, and in that case, it involves your affective, family or professional security and has no direct link to money. You may be possessive, and you defeat those who intend to come too near to what belongs to you.

In any case, you are well-equipped and you usually get what you want. This is a valuable asset throughout your life because, indirectly, it turns you into a more independent person who does not need any protection.

★★★★★ Mars square Neptune, orb 2° 25'

You behave like a bohemian person and you are led by an ideal that you may not control. Your passions are undoubtedly sincere. However, you may target wrong objectives. You engage on hopeless struggles and meaningless confrontations. It is important that you watch out for fanaticisms from all sides and that you remain clear-sighted in the face of your exalted feelings. Your sincerity may work wonders when you champion lost causes. The most difficult thing is probably to keep your exacerbated sensitivity under control. Because you are deeply moved by facts, because you are sensitive to injustices and to the world's woes more than the average people, you embark on incessant battles, at the risk of undergoing a few delusions, on occasions.

★★★★★ Mars sesqui-quadrate Jupiter, orb -1° 45'

You mobilize your energy as soon as there is an opportunity to turn your chances into concrete reality. You assert yourself in a spectacular and demonstrative manner as soon as an assembly gathers and there is a chance for success. However, too much haste and zeal may harm your projects and spoil your expected outcome. The danger with this aspect is your overzealousness as you strive to achieve your objectives and your ambitions, forcing your way through events, whereas the situation requires diplomacy and patience. Too much fieriness may make you miss your target. With this planetary configuration, it is important that you keep in mind that some circumstances need to be handled with precision and clear-sightedness. Not all opportunities are necessarily good. It would be a pity to lose your efficiency through excesses of opportunism or of enthusiasm.

Your Intellect and Your Communication Style

Your intellectual and nervous energy is considerable, Paulo Coelho, with good concentration abilities and a strong determination. You have plenty of planning and organization skills and enthusiasm. Your helpfulness is deep and you never hesitate to solve other people's problems. You are thought of as a reliable person and you enjoy it very much. You believe in your own capacities and you tend to speak with a dramatic pomposity because you want to attract attention. People who do not share your opinion are in trouble! Your determination is strongest and you may show stubbornness and inflexibility because you do not easily accept it when your ideas or your actions are criticized. Some people believe that you assert yourself in an authoritarian and condescending way, but you are not aware of it and therefore, you keep on thinking that you are right.

Communicating, thinking, and moving: all these activities match your natural tastes, sometimes to the detriment of concrete results in which you're not too much interested. That said, Paulo Coelho, you excel in activities where communication, reflection and mobility - in the literal and mental meaning of the term - are required: teaching, law, journalism, human resources, transportation, etc.

Knowledge acquisition and sometimes, mastering the art of writing are among your favourite pastimes. You are happy as long as your mind is in turmoil, and even then, you need to have a lot of people around you listening to you, unless you are the one to glean for yourself, here and there, the intellectual food you are so fond of.

★★★★★ Mercury sextile Uranus, orb -0° 28'

Your state of mind is innovative and turns the surrounding world into a constantly moving field of experiences. You ask relevant questions ... and you answer them. Although you are flexible when you ought to, your principles and your beliefs are unwavering. It seems difficult to catch you off your guard. You multiply observations, relationships, contacts and you never lose face: actually, your mobility hides an unshakable determination and a deep lucidity. In a split second, you are able to catch the useful information or the enriching relationship. The original and fanciful steps you take exclude monotony. Your approach to life is amazing!

★★★★★ Sun conjunction Mercury, orb 5° 05'

You know how to play with your image, how to give multiple representations of yourself. A precious asset: you are sensitive to other people's opinion and you adapt yourself to the audience. Of course, there is a "show" side in your manner that may prevent perfect cohesion. But that's the other side of the coin, for an extraordinary capacity to discover. This aspect translates into an acute sense of observation, an intense desire to learn and to bring everything to light. You strive to be informed in many circumstances, to understand the machinery of the world surrounding you, particularly regarding all human topics. And you will change according to that information and the knowledge gained. You have the chameleon's adaptation powers. And its vulnerability, as well.

★★★☆☆ Mercury square Jupiter, orb -5° 07'

You play with social norms and you scoff at them. Your morality is seldom questioned: you adopt the most rewarding behaviour, precisely the one that wins you your entourage's consideration. But you sometimes cheat. You are an opportunist and you act according to circumstances, particularly because your moral stand is only a superficial mask. You enjoy concealing your beliefs: life is a social game and you change its rules to suit your convenience. Your flexibility and your adaptation abilities are appreciated. However, it is important that you do not behave inconsistently. A stable and transparent course of conduct may help you avoid many pitfalls or delusions. Beware of words spoken thoughtlessly, of empty promises, and do stick to your indisputable cleverness.

★★★★★ Mercury semi-square Neptune, orb -0° 55'

With this Mercury-Neptune dissonance, relations may be distorted by the mirages of sensitivity. You have to make an effort to keep your objectivity. If this aspect is not well integrated, it may harm your good evaluation of human stakes. Your intimate beliefs may limit the dialogue, as if a very specific sensitivity prevented true communication. It may be difficult to find the right wording to express fragile and ineffable experiences. Imagination in power is not easy to share and the poetry of your speeches may be beyond your audience's understanding!

★★★★★ Mercury conjunction Saturn, orb 10° 14'

Your vision of the world is rigorous and objective. An exemplary logic characterizes your mental attitude and your human relations. Your discerning faculties overlook no detail. You need to know the whys of your life and to explore the backstage of your surrounding world. The deepness of your relations dismisses superficial connections. It may be the reason why your interest is aroused when you are in touch with elements that are alien to your mode of functioning. You have the soul of a researcher, regardless of the form that your investigations may take. It may be an exacerbated curiosity for human topics or a will to understand relationship stakes. It may also be a hobby or a course of study that introduces you to a riddle. It does not matter! Life is a perpetual quest for the unknown. Your critical mind is highly developed and you take commonplaces for granted only after thorough consideration.

Your Goals, Motivations, Career, and Destiny

Your Sun is posited in the 3rd House

Your intellectual mobility and your curiosity are remarkable, Paulo Coelho. Your entire will is at the service of your inextinguishable thirst for knowledge and contacts. You are interested in communication and in occupations where you can move and express your ideas, such as journalism, literature or writings in general, trade, recruitment, laws etc.

Early in your life, you notice that your skills as a speaker and a mediator are impressive. As you mature, you can use these assets to carry your professional or personal projects through a successful conclusion. You like to move about in the proper sense and to visit your numerous contacts, in order to embrace and fulfil your need for communication.

You may play a rewarding role towards your siblings, if you have any. Or a sibling plays an important part in your destiny.

When things do not follow the course you want them to, because of your propensity to communicate too much and to move frenetically, you may be subject to conflicts within your neighbourhood and your family (again, as always...). You may have accidents when you are paying your visits and you may also be the target of your colleagues' harsh criticisms.

The ruler of your chart is in the 3rd House

The ruler of the Ascendant, also referred to as the chart ruler as explained in a previous chapter, is also posited in one of the twelve Houses of the chart. Just like the Sun in his House, the ruler of the Ascendant provides certain abilities, or it makes you appreciate more keenly certain areas of life.

The ruler of your Ascendant is in the same House as your Sun. This specific feature of your chart strengthens the Sun's characteristics previously delineated.

Aspects influencing your ambitions

Regarding your destiny or your career, the following aspects of your natal chart allow to fine-tune what has just been said above:

★★★★★ Sun opposite Midheaven, orb -2° 29'

With the Sun in opposition to your Midheaven, Paulo Coelho, you radiate or you blossom even more when you are close to your roots, your family, or your home. It is true that it is to the detriment - one cannot get everything - of your social ascent, or the achievement of your social ambitions.

★★★★★ Venus opposite Midheaven, orb -5° 21'

Venus is in opposition to your Midheaven, Paulo Coelho. It is not strictly speaking a dissonance since at the same time, this aspect is also a conjunction with your Imum Coeli which symbolises your home, your roots, and your family. Thus, it is obvious that your charm and the way you express your feelings work better in private circles than in society. When you do not feel in security, you are quite reluctant to display warmth, which may give the impression that your career or your destiny is a bit in the background, compared to what it might be if you did not feel this vulnerability, which is incidentally quite nice...

★★★★★ Mars trine Midheaven, orb 4° 03'

Your energy serves your professional goals and your social ascent in general, Paulo Coelho. This beneficial aspect of Mars to your Midheaven endows you with strong dynamism, and it rewards your sustained and efficient efforts. You enjoy taking action, and your results are gratifying most of the time.

★★★★★ Moon square Midheaven, orb -4° 15'

There is a dissonance between the Moon and your Midheaven, Paulo Coelho. It may indicate a discrepancy between your sensitivity and the goals you set for yourself in life, although this dissonance seldom plays out dramatically. You may feel that your emotions sometimes catch you off your guard in society, and that the level of your popularity is not too satisfactory, without your knowing the reasons why. In some cases, females may thwart your social ascent.

★★★★★ Jupiter square Saturn, orb 5° 07'

Jupiter and Saturn form a dissonance in your natal chart. It is far from being horrendous. This planetary configuration, which is deemed somewhere between the individual and collective characteristics, only indicates that your social integration may be delayed, or may encounter a few difficulties. Such slight delays or setbacks often have their origins in your own behaviour. Indeed, since Jupiter represents laws and public life, and Saturn, seriousness and perseverance, in many instances, you may become impatient, or even rebellious to any form of authority or legal constraints, to the extent that you cross the white line... When you face such circumstances, you must resign yourself to listening to reason and accept to wait for your turn, lest... your achievements are even more slowed down by your own haste.

★★★★★ Mercury opposite Midheaven, orb -7° 34'

This opposition of Mercury to your Midheaven is also a conjunction with your Imum Coeli, Paulo Coelho. Therefore, it is not strictly speaking a dissonance, on the contrary, it is a valuable asset for the management of your home and the interests of your family, even though somehow, it may be to the detriment of your social ascent. Actually, you feel more comfortable when you communicate with your close friends than in society.

★★★★★ Sun sextile Uranus, orb 4° 36'

This aspect reinforces the determination as well as the will to further your original, sometimes revolutionary, ideas and designs. Your capacity of innovation is important for your image. You have the soul of a leader. You display a forceful and synthesizing mind. You may tend to oversimplify or to schematize situations. In most cases, you know where you are heading to and how to reach your goals. Your determination is two-edged... not everybody will appreciate your contrasted standpoints. It is yes or no, black or white! This planetary configuration indicates certainties. When it comes to acting according to your inner motivations and to respecting your models, you can show an unusual willpower and sweep aside all obstacles lying on your path.

★★★★★ Uranus trine Midheaven, orb -7° 06'

Thanks to this soft aspect of Uranus to your Midheaven, Paulo Coelho, you are endowed with the gift to let yourself be carried away by the changes cropping up on your way. Instead of being disheartening, modifications affecting your professional or social environment... stimulate you! Then, you may show opportunism, in the good sense of the word, and throughout your life, you may experience strokes of good luck, the consequences of which can be increased, thanks to your talent and your lack of fear whenever you face newness.

★★★★★ Neptune bi-quintile Midheaven, orb -0° 29'

Thanks to this soft aspect of Neptune to your Midheaven, Paulo Coelho, your intuition is very sharp, as far as your possibilities for success are concerned. Thus, you have no difficulties in finding your professional or social path, and your nose tells you whether something is good or not for you, even before you start to analyse it. Your imagination and your visionary qualities accompany you along your journey towards success.

Your Assets and Your Part of Joviality

The present of the planet of Greater Fortune to you Paulo Coelho, is the gift for investigation, the taste for mysteries and... the capacity to solve them. Your emotions are amplified and prompt you to take your actions to the end, without fear or restraint. You also have the talent to cleverly manage your financial investments. According to the Tradition, sexuality and sensuality are equally balanced with this lucky configuration. So enjoy and be happy!

For you, Paulo Coelho, nature's present is the luck of the devil that protects you against illnesses and brings about joie de vivre in your daily work. Therefore your health and your work environment are constant sources of satisfaction. Your value is duly appreciated, and you are popular and helpful.

The planet Jupiter symbolizes expansion, broadness and generosity. Jupiter is associated with the functions of synthesis, enthusiasm and optimism. In your natal chart, his house position is more important than his sign position because, like Saturn, Uranus, Neptune and Pluto, he is a slow planet. Many people born in the same period have Jupiter in the same sign. This is the reason why the sign occupied here is less meaningful than when it is occupied by the so-called fast planets, i.e. the Sun, the Moon, Mercury, Venus and Mars. Therefore, some caution is to be exercised as you read what follows.

Jupiter in Scorpio strengthens your emotional realm and your instinctive capacity to have more lasting and deeper feelings. Your sensuality and your sexuality are favoured by this configuration. You may enjoy strokes of luck in the areas of finance, speculations, investments and inheritances. More than anyone, you can deal with mysteries and anything linked to the unknown.

Your Serious Side

Your ambitions and your self-perception are marked with some degree of detachment. You become less frivolous and more detached from individual and superficial values as time goes by.

Impersonal detachment or cold-looking demeanours may hamper your communications, Paulo Coelho, although they increase your concentration, your patience, and your ability to study and to accumulate knowledge. As far as your entourage is concerned, quality prevails over quantity, and you can easily alternate agitated and eventful periods with periods of solitude.

Your challenge is certainly to make an effort in order to be less demanding from people and to keep a minimal number of relations. Nobody is perfect, and neither are you! Pay attention to people's qualities and forget their flaws, for they should not prevent you from enjoying their company.

The planet Saturn symbolizes contraction, effort, time, limitation and concentration. Saturn eliminates anything that is not authentic, sooner or later. It is impossible to cheat him as he gives an irresistible desire to form a coherent whole with oneself, in responsible and wise ways. He is the great purifier. He represents our limitations but also our truth. In your natal chart, the house position where Saturn is posited is more important than his sign position because, like Jupiter, Uranus, Neptune and Pluto, he is a slow planet. Many people born in the same period have Saturn in the same sign. This is the reason why the sign occupied here is less meaningful than when it is occupied by the so-called fast planets, i.e. the Sun, the Moon, Mercury, Venus and Mars. Therefore, some caution is to be exercised as you read what follows.

Saturn in Leo tends to detach you from pleasure and leisure and gives you a serious and responsible nature. These are good qualities if Saturn is not badly aspected, even if your inclination for having fun is not particularly increased by this planetary configuration...

A Few Special Points

Your Uniqueness and Your Utopias

You are an original person, sometimes eccentric, even extravagant, and your actions or your words are always surprising. The expression of your humour is out of touch with reality and unpredictable. Most of the times, things are fine and you radiate with a peculiar and very special charm. With you, it is impossible to get bored!

Your will to behave differently from the mass of your fellow men and to assert your independence is part of your pride. Be wary that it does not backfire on you. It would be a pity if excessive unpredictability made you appear as... bizarre!

Your Inspiration and Your Illusions

This pleasant combination may magnify your love affairs and your creativity and give them a romantic and whimsical side. If you are an artist, you often feel inspired and carried away by love and emotional impulses.

This area of your life is intense and, as a consequence, you are more vulnerable than other people. It is up to you to sort out among your positive, creative impressions on the one hand, and your out-of-proportion reactions caused by frustrating events, on the other hand.

You must know that you are exposed to love delusions. However, you are also entitled to the best part of love, when all is well.

In the fields of entertainment and relations with children, you are quite easily influenced and you follow your intuition more than your rational mind; rather emotion all on edge than reason...

Your Passion and Your Authority

Your mind is particularly clear-sighted and, if you are so inclined, you can show creativity in literature because your vision is extremely deep and intuitive.

Your clear-sightedness may be a source of troubles within your entourage or your siblings. Indeed, your penetrating mind may prompt you to say things that you should never utter. You may also show a form of authority that lacks diplomacy when you deal with others.

Your short trips may be surrounded with mystery. In a few rare instances, they may bring about turmoil or on the contrary, happy disruptions.

Your Isolated Planets

In general, the ten planets of the chart are connected to other planets by major or minor astrological aspects. It is owing to those ties that the planets' energies can manifest in the chart owner's personality and play out within safeguards according to a specific tonality.

It seldom happens that in a natal chart, a planet is totally disconnected from the nine other planets.

Astrologers have observed that when such a case occurs, the person feels the energy of the unaspected planet in quite a singular way, very jerky and powerful at the same time. Thus, for instance, the famed astrologer Jean-Baptiste Morin de Villefranche wrote that "an unaspected planet heralds that something strange or extraordinary will take place regarding the meanings of the house in which the said planet is posited" (source : l'astrologie selon Morin).

Rules for detecting an unaspected planet: among all the testimonies that we have reviewed to this day, based on our experience, we tend to agree with American astrologer Janis Huntley who accepts seven aspects, which involve the zodiacal twelve sections of 30 degrees. The aspects to be considered are the conjunction (0 degree, cooperation or tension), the semi-sextile (30 degrees), the sextile and the trine (60 and 120 degrees respectively, aspects of cooperation), the square and the opposition (90 and 180 degrees respectively, tensed aspects), and the quincunx (150 degrees, slightly tensed). In this detection, the chart's angles are not taken into account.

In any case, it is important to remember that an isolated planet clearly expresses its influence when it is a personal planet. Thus, when the Sun, the Moon, Mercury, Venus, or Mars is isolated, it is certain that the effects described by Jean-Baptiste Morin de Villefranche will become manifest. As for Jupiter, Saturn, Uranus, Neptune, and Pluto, one must be cautious because the volume of cases documented is not yet large enough.

Your chart has no isolated planet, and this particular case does not apply to you.

Annex 1: Your Minor Dominants

The five following dominants are less significant than those described at the beginning of your report. They may not be strongly felt. In some cases, they add several minor details to the analysis of your character, but they are rather for curiosity purposes. It is not necessary to take them into account when you first read your portrait.

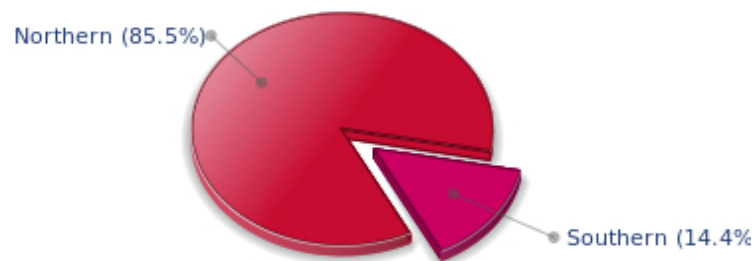
Your Planetary Repartitions: Northern, Southern, Eastern and Western Hemispheres

The axis linking the 1st house's cuspide (the Ascendant) to the 7th house's cuspide - the Descendant - divides the zodiac into two bowls, a superior bowl, in the South, and an inferior bowl in the North. Quoting an expression by the famous American astrologer Rudhyar, the Southern part and the Northern part correspond to two functions: "being" and "doing". Other concepts are also associated with this North and South distribution, such as introversion - Northern hemisphere - and extraversion - Southern hemisphere - being or appearances, inner life or external life, reflection or action, dreaming one's life or living one's dreams, the abstract or the concrete, backstage or limelight.

This is not about determination but about personal inclination: thus, some people will be thrown into public life despite a prominent Northern hemisphere. If this happens, however, it will not be due to their will, their taste or their deep nature. Conversely, a prominent Southern hemisphere will not bring about a famous destiny to its owner, even if he tends to turn the spotlight on himself, or if he looks for a more active life. It is a matter of deep nature and natural inclination. Of course, none of the typologies is "superior" to another.

In your birth chart, Paulo Coelho, the ten main planets are distributed as follows:

Your Northern and Southern Hemispheres



Paulo Coelho, the predominance of planets in the Northern hemisphere prompts you to reflect and imagine rather than to exteriorize your actions and to be at the forefront of the stage. So, should you wish to remedy this situation, it is up to you to force your nature to take action in broad daylight, to communicate, and to assert yourself... then, you can move forward in this concrete life and enjoy your newly won situation.

The birth chart is divided into two other parts, Eastern and Western, by the axis linking the Midheaven

to the Imum Coeli.

The Eastern part, on the Ascendant side, shows the person's ego, will, magnetism, and vitality, whereas the Western part, on the Descendant side, symbolizes other people, communication, relationships and their influence, as well as flexibility and adaptability.

Paulo Coelho, here is the planetary repartition in your Eastern and your Western hemispheres:

Your Eastern and Western Hemisphere:



The predominance of planets in the Eastern hemisphere of your chart enables you, Paulo Coelho, to assert yourself and to rely on your determination: you know what you want and you have a tendency to take action and to decide with your personal goals as priorities, even if they can be in contradiction with what others think.

A definite asset... provided that you never make mistakes in your choices. You should pay more attention to your entourage in order to counterbalance your nature and to take advantage of your assets wisely. The danger is that you may be too authoritarian and not conciliating enough. Strong determination coupled with flexibility and acute sense of communication are qualities you should develop.

Your Yin and Yang Polarity

The twelve signs are divided into two polarities, called active or passive, or sometimes masculine and feminine, positive and negative, Yang and Yin. This classification corresponds to two quite distinct tonalities, the first one bringing extraversion, action, self-confidence and dynamism, the second one, introversion, reactivity, reflection and caution. None is superior to the other, each group has its own assets and shortcomings. Odd signs - Aries, Gemini, Leo, Libra, Sagittarius and Aquarius - belong to the first group, whereas even signs - Taurus, Cancer, Virgo, Scorpio, Capricorn and Pisces - belong to the second group.

Your Yin and Yang Polarity



According to the disposition and qualities of your planets and angles, you are rather influenced by Yang energy, the active polarity, Paulo Coelho: more concerned about actions than reflection, you sometimes rush without standing back and without the deepness that is needed. However, your spontaneity prompts you to take fresh starts, even after repeated failures caused by your rashness.

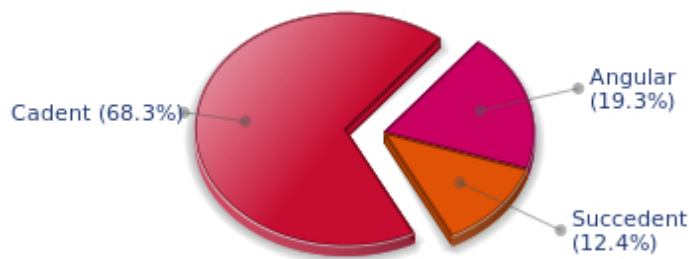
Your Houses' Accentuations

Houses are split up into three groups: angular, succedent and cadent.

The first ones are the most important ones, the most "noticeable" and energetic houses. They are the 1st, 4th, 7th and 10th houses. Their cuspides correspond to four famous angles: Ascendant for the 1st house, Imum Coeli for the 4th house, Descendant, opposite the Ascendant, for the 7th house and Midheaven for the 10th house, opposite the Imum Coeli.

Planets are evaluated according to a whole set of criteria that includes comprehensive Western astrology rules. At their turn, planets emphasize specific types of houses, signs, repartitions etc., as previously explained.

Your Houses' Accentuations



Cadent houses, namely the 3rd, 6th, 9th and 12th houses, are very emphasized in your chart, Paulo

Coelho. They indicate important potential for communication, adaptability and flexibility. These houses are symbolically linked to the mind and intellect. The relative weakness implied by these characteristics indicates your tendency to hesitate or to be indecisive, but also your remarkable ability to start off again, which is a nice quality, finally: you can easily get yourself out of a tight spot thanks to your mobility and casualness, in the best sense of the term. This group of houses corresponds to evolutionary characteristics of your personality. However, they are only indications and you must include them in the rest of your chart in order to see whether they are validated or not!

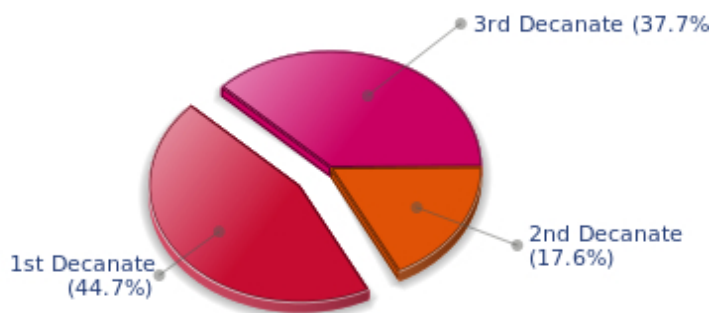
Your Esoteric Decanates

Each sign contains 30 degrees and can be divided into three equal parts: the decanates. The Tradition indicates that specific meanings can be associated to each of the three decanates. Their sphere of activity is usually limited to the Sun sign, however, it is even more interesting to observe the distribution of all the planets in the chart to get an idea of the respective importance of the three decanates, which can complement the description of the personality.

These meanings must be considered with the greatest caution. Indeed, they are minor characteristics that can only underline other outstanding traits of character.

Traditionally, the first decanate highlights the characteristics of the sign where a planet is located. The two other decanates correspond to sub-dominant planets, depending on the nature of each sign. This system leads to a multiplication of meanings and it is impossible to have a clear understanding: here, we prefer to give only the meaning of one decanate in comparison with the other two, within the birth chart as a whole. Again, the greatest caution is needed with regard to this minor indication as it is not always reliable: it is not essential that you read these texts in the beginning. You can get back to them later on, once you have read more important interpretations

Your Esoteric Decanates



The first decanate, which means the part between 0° and 10° of any zodiacal sign, prevails in your natal chart, Paulo Coelho: this decanate is traditionally linked to vitality and physical constitution, and may indicate that you efficiently express your concrete energy on the material and sensual planes.

Annex 2: Karmic Study

The karmic theme is a good complement to the psychological portrait, or natal chart. This analysis is based on the positions of the Lunar Nodes, the Black Moon and the Part of Fortune: they are also called fictitious points and describe the spiritual purpose of your destiny. Because there is in all of us an experience and a quest, our life is an evolutionary journey... provided that we head towards the right direction, of course! Indian astrologers highly prize the Nodes axis (North Node and South Node). It is the Ariadne's thread that we are invited to follow. The Black Moon indicates the sector where we are most likely to transform or to transcend, whereas the Part of Fortune points out the area where we can easily express our specificity.

The Lunar Nodes: a spiritual path

Lunar Nodes have their roots in the Indian tradition and they are based on a simple concept: each of us have a mission of their own, here on earth, a destiny, a course. According to the Indian philosophy, life is a school: the nodal axis describes our past experiences (South Node, our karma, our spiritual inheritance or our previous lives), and our aims on earth (North Node, our Dharma, the purpose of our current incarnation). This is the reason why the study of the lunar nodes is called "Karmic astrology". Here, we shall not step into hypothetical past lives. Wherever our current trends may come from, all that really matters is that we become aware of the purpose of our life, its finality and our dharma. We are likely to understand our life purpose around the age of 37, when the Lunar Nodes return to their natal position.

You are a rebel. Your extremist attitude earns you successes and setbacks, alternately, and prompts you to transform your lifestyle. However, you long for stability. Your life challenge is to accept to enjoy life's simple joys without gratuitously challenging your assets. As years and experiences go by, you learn the value of what you possess. Things that used to make you indignant, because they were too comfortable, become gradually highly worthy. Your progression encourages your level-headedness: in a first stage, you are prone to struggles, dissidence and contestations... that cause more delusions than satisfactions. Therefore, you set aside your outbursts of anger and strive towards wisdom: acceptance of facts – which does not mean resignation –, renunciation without submission. Although it may not please the frenzied adventurers, you need a minimal dose of quietness and comfort if you are to give of your best and to fully blossom!

You have obvious sociability qualities. You know better than others how to adjust to a new context and to copy your entourage's behaviour exactly. You do not dissociate yourself from groups or cells (social, family), on the contrary, you frequently adopt flexible attitudes that meet other people's expectations. This may translate into a lack of fighting spirit. You may not dare to go against prevailing fashions and currents. Because you dread unknown situations, you may miss the opportunity to innovate. It is important that you learn to go it alone and to get rid of scruples that hamper your doings: life encourages you to leave aside other people's opinions and, as time goes by, to find your autonomy of thought and action. While keeping your sociable nature, it is important that you develop a sense of individual initiative. In many situations, one can only rely on oneself. In such cases, you have the possibility to achieve the freedom many people dream of, without really giving themselves the means to implement it. Do not allow your entourage to dictate your way of life, over and over again. However, do not fall into the opposite excess: the frenzied individualism of those who value nothing except their own interest! Your life's purpose may be to master your destiny.

Lilith or the Dark Moon

The Black Moon is the spark of refusal and distance that is dormant in all of us. Depending on the sign where she is found in your chart, she highlights the desire to transform and to sublimate a part of your life. The Black Moon is unfathomable and mysterious. She gives a different dimension to the sector she touches. Her manifestations are subtle; nonetheless, she is powerful, implacable, demanding to the extreme... The Black Moon is also called Lilith. She is the inner flame of your heroism and insubordination.

You have the feeling that you are different from your entourage because you are in charge of both a special mission, and an extraordinary destiny. This configuration may indicate an immoderate pride (when the Black Moon is not well integrated enough). However, when she is well integrated (and she will be, as time goes by), the Black Moon forges an exceptional destiny that implies sacrifices, asceticism and solitude to some extent. The danger is to show too strong an intransigence and to be unable to forgive your entourage's weaknesses as well as your own. But it is also where your strength is found: an innate sense of duty, regardless of the price to be paid for a slow ascension.

This configuration predisposes to the quest of the absolute on two accounts: firstly, the very nature of the Black Moon, implacable and extremist, and secondly, she is in a sector of the Zodiac that is traditionally evolutionary but extremist. Here, you flirt with death, danger and challenge. Everything suggests transformation, abandonment and revival, passion and cruelty. There is no half-measure in your behaviour, only a terrifying and marvellous thirst for the absolute... That'll take some doing for the person who will experience it with required intensity!

The Part of Fortune in House

The Part of Fortune is a very ancient fictitious point that depends on the lunar phase at the time of birth. The astrological house tenanted is particularly strengthened. In your chart, the Part of Fortune is in the 9th house: you live for adventures and you want to go beyond the limits of your abilities with a view to discover new schools of thought. The key to your motivations is travel under all its forms, geographical, spiritual or inner exploration. You need to broaden your field of consciousness, which can be too ambitious a word to describe simple experiences: the taste for foreign or strange cultures, accepting and understanding differences.

Conclusion

A few remarks are needed here in order to allow you to fully take advantage of your astrological portrait: firstly, do not forget that a birth chart is also a photograph of the sky at birth and a structure that not only contains the personality's characteristics, but also its potential evolution.

We all know that, in real life, people begin to know themselves when they are in their forties, or even later. Likewise, several traits of character in a portrait may seem surprising: in most cases, it means that such features are not yet developed.

Some personalities reveal themselves late in life, whereas others are more precocious. It must be remembered that psychological structures are in a state of continuous evolution because they are influenced by unfolding events and gradual maturity. We can never underline strongly enough the "mobile" nature of the personality, throughout a lifetime.

On the other hand, it is difficult to discriminate what is "already present" at this moment in your life when you are reading your chart's interpretation, from what will appear later in the logic of your evolution: you must sort out all the pieces of information provided and, in most cases, you will see that your astrological portrait is helpful for your endeavours to know yourself better.

Finally, several readings of an astrological portrait are usually necessary in order to absorb all its different meanings and to evaluate the relevance of each character trait.

In any case, better self-knowledge obviously contributes to faster personal blossoming, and it is undoubtedly one of astrology's major roles: contributing to know oneself better, in order to improve more rapidly, to deal with one's weaknesses and to avoid its drawbacks, and to take advantage of one's assets as efficiently as possible.
