



**Orlando Bloom's
Astrological Portrait**





Orlando Bloom's Astrological Portrait



Introduction	2
Your Planets, Houses, Aspects, and Natal Chart	4
Preamble	7
Your Planetary Repartitions	8
Your Dominant Modes and Elements	9
Your Dominants: Planets, Signs and Houses	10
Your Style, Behaviour, and Peculiarities	15
Your Sensitivity	19
Your Affectivity	20
The Way You Take Action and Your Sexuality	22
Your Intellect and Your Communication Style	23
Your Goals, Motivations, Career, and Destiny	24
Your Assets and Your Part of Joviality	27
Your Serious Side	28
A Few Special Points	28
Your Isolated Planets	29
Annex 1: Your Minor Dominants	31
Annex 2: Karmic Study	35
Conclusion	38



Orlando Bloom's Astrological Portrait

Introduction

To fully benefit from this portrait, we suggest that you read its introduction and its preamble carefully, and then that to take the time to soak up the interpretations of each chapter. Given the large number of texts, which mirrors the human being's complexity, you may need to go through the contents several times, so as to get a good grasp of their meaning and to know yourself better. This will reward your patience.

The purpose of this report is to describe your psychological portrait and to highlight the most fundamental features on the personal area. The report begins with the analysis of your planetary dominants and outlines your personality's general traits before going into further detail. Minor dominants are analysed at the end of Annex 1, for purposes of clarity. Your report then delineates the various facets of your personality:

In general, even when relationships are not involved, we express ourselves and we feel according to our character and our personal motivations: this is indicated by the Ascendant and the Sun sign which both give details on the way we function. They shed a tremendously important light which allows to figure out your personality. Here, we describe your Sun sign (your inner self), your Ascendant (your behaviour as seen by others), and the ruler of the Ascendant (interesting additional pieces of information about the style of your personality). These descriptions alone cover nearly a third or a half of your psychological signature, depending on your natal chart characteristics.

Then, we address your sensitivity, or in other words, the way you receive things and how you express your emotions ; it works as a constant filter for all your exchanges, even when it becomes a more secondary element in your amorous relationship, because at that moment, affectivity prevails. Sensitivity is the way you perceive things, it is your radar, your daily mood, and at the same time, it indicates how you react to your entourage, on a daily basis. It is what others immediately see of you. In the second paragraph, we explain in which areas of life your sensitivity and your emotions are strongest, therefore, where you are most vulnerable.

After this, it is your affectivity, the way you love and how you charm, that comes into play as soon as you fall in love: the first part indicates its basic structure or its main form. The second part describes the areas where it is best expressed and how you display it, according to your personality.

A third fundamental area deals with your mode of action and your sexuality: how you behave, how you manage to obtain what you want, what kind of desires you have. There are twelve possibilities, very

different from one another. The study discloses the specific one that applies to you. In the second paragraph, we explain in which life areas you may most efficiently take advantage of your capacity for action and for conquest.

Your ways of communicating and of thinking are obviously among the major elements that must be integrated into the delineation and the description of your personality. Indeed, they influence your general behaviour and may modify or enhance the image your project (for instance, extraversion may “compensate” a weak affectivity, but a huge number of cases are possible). An additional chapter indicates the favourite areas where you enjoy communicating, thinking and meeting with people.

Besides, we analyze an even more personal aspect that is important to define and understand what may occur within your couple: each of us have a centre of interest, a privileged manner to be fulfilled or to achieve our destiny; this main motivation is indicated by the positions of your Sun and your chart ruler in the astrological houses and we provide you with its detailed description.

A natal chart contains the potential for specific fulfilment and a whole range of assets, protections and qualities. How does the lucky factor manifest in your personality? In which area can you best exploit your qualities? The answers are precisely revealed to you in this chapter.

On the other hand, we all feel in us a part of vulnerability, doubts and fears. How does this part of solemnity or serious side play out? How is it possible to handle it in order to evolve and to get rid of useless elements? All this information is provided to you in these two paragraphs.

Then, you can discover three additional traits of your personality that must be considered as secondary ones. They deal with your predispositions, which means that they need to be triggered by external events because they are not influenced by your will; let's call it a part of fate. Please, bear in mind that your destiny can unfold only in accordance with what you are: therefore, even if they belong to your more unconscious self, these characteristics are parts of you, definitely.

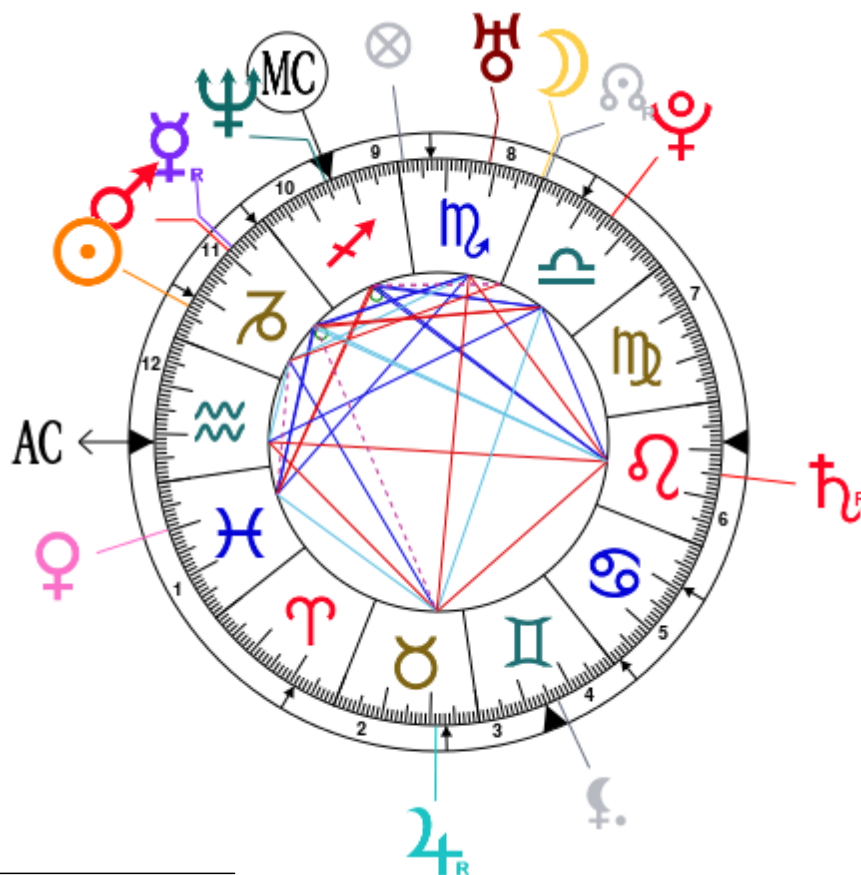
The karmic chart complements the psychological portrait or natal chart. It is based on the positions of the Lunar Nodes, the Black Moon, and the Part of Fortune. These elements of the chart, sometimes referred to as fictitious points, provide information about the spiritual meaning of your destiny. Owing to the fact that we all have in us acquired knowledge and the urge to go on a quest, our life is an evolutionary journey... However, these texts must be read with great caution: this is the reason why you will find this analysis in the Annex 2 of your report.

Your Planets, Houses, Aspects, and Natal Chart

Orlando Bloom, born January 13, 1977, at 09:15 AM, Canterbury (Kent), United Kingdom [1.05E ; 51.17N ; 0W00]

Natal Planets				In House	Natal Houses (Placidus)	
☉ Sun	23°05'	♄ Capricorn	House 12	House 1	21°41'	♒ Aquarius
☾ Moon	0°18'	♏ Scorpio	House 8	House 2	21°07'	♈ Aries
☿ Mercury	8°16' R	♄ Capricorn	House 11	House 3	23°14'	♉ Taurus
♀ Venus	9°43'	♛ Pisces	House 1	House 4	13°56'	♊ Gemini
♂ Mars	9°17'	♄ Capricorn	House 11	House 5	1°31'	♋ Cancer
♃ Jupiter	21°11' R	♉ Taurus	House 2	House 6	20°54'	♋ Cancer
♄ Saturn	15°01' R	♌ Leo	House 6	House 7	21°41'	♌ Leo
♅ Uranus	11°18'	♏ Scorpio	House 8	House 8	21°07'	♎ Libra
♆ Neptune	15°04'	♐ Sagittarius	House 10	House 9	23°14'	♏ Scorpio
♇ Pluto	14°11'	♎ Libra	House 7	House 10	13°56'	♐ Sagittarius
♁ Node	29°34' R	♎ Libra	House 8	House 11	1°31'	♄ Capricorn
♇ Lilith	16°30'	♊ Gemini	House 4	House 12	20°54'	♄ Capricorn
AS AS	21°41'	♒ Aquarius				
MC MC	13°56'	♐ Sagittarius				

In keeping with the common practice, we consider that a planet posited within 1 degree of the next house belongs to that house. We allow an orb of 2 degrees for the ASC and the MC.



List of Your Active Planetary Aspects

Please find below the list of all the active inter-aspects which are interpreted in this report, in addition to your planets in sign, in house, and all your planetary dominants. Since the aspects between slow-moving planets are of a collective nature, they are not displayed, in compliance with our interpretation rules.

- ☆☆☆☆☆ Sun square Moon, orb -7° 13'
- ☆☆☆☆☆ Sun semi-square Venus, orb 1° 38'
- ☆☆☆☆☆ Sun trine Jupiter, orb -1° 54'
- ☆☆☆☆☆ Sun quintile Uranus, orb -0° 13'
- ☆☆☆☆☆ Sun semi-sextile Ascendant, orb -1° 23'
- ☆☆☆☆☆ Moon semi-square Neptune, orb -0° 14'
- ☆☆☆☆☆ Moon semi-square Midheaven, orb -1° 22'
- ☆☆☆☆☆ Mercury sextile Venus, orb 1° 27'
- ☆☆☆☆☆ Mercury conjunction Mars, orb 1'
- ☆☆☆☆☆ Mercury sesqui-quadrant Jupiter, orb -2° 05'
- ☆☆☆☆☆ Mercury bi-quintile Saturn, orb -0° 44'
- ☆☆☆☆☆ Mercury sextile Uranus, orb -3° 02'
- ☆☆☆☆☆ Mercury square Pluto, orb -5° 54'
- ☆☆☆☆☆ Venus sextile Mars, orb 0° 26'
- ☆☆☆☆☆ Venus quintile Jupiter, orb -0° 32'
- ☆☆☆☆☆ Venus trine Uranus, orb -1° 34'
- ☆☆☆☆☆ Venus square Neptune, orb -5° 2'
- ☆☆☆☆☆ Venus square Midheaven, orb -4° 12'
- ☆☆☆☆☆ Mars bi-quintile Saturn, orb 0° 16'
- ☆☆☆☆☆ Mars sextile Uranus, orb -2° 01'
- ☆☆☆☆☆ Mars square Pluto, orb -4° 54'
- ☆☆☆☆☆ Jupiter square Saturn, orb -6° 1'
- ☆☆☆☆☆ Jupiter square Ascendant, orb -0° 3'
- ☆☆☆☆☆ Saturn opposite Ascendant, orb -6° 4'
- ☆☆☆☆☆ Saturn trine Midheaven, orb -1° 04'
- ☆☆☆☆☆ Neptune conjunction Midheaven, orb 1° 07'
- ☆☆☆☆☆ Pluto trine Ascendant, orb 7° 29'
- ☆☆☆☆☆ Pluto sextile Midheaven, orb -0° 15'

Meaning of Stars

Stars indicate the strength of the aspects. Two solid coloured stars (there are half-stars also), mean that the aspect is powerful enough to be noticed at the first reading.

We strongly advise that you read the paragraphs displaying less than two stars later on, after you have absorbed the full import of the other texts.

The yellow colour indicates a soothing and conciliating aspect, and the red colour, a dynamic and tense aspect. The red aspects enable you to evolve, to take action, and to learn to turn your "weaknesses" into assets through your life experiences. The yellow aspects are innate strengths on which you rely in order to grow better with the former...

Preamble

When interpreting a natal chart, the best method is to start gradually from general features to specific ones. Thus, there is usually a plan to be followed, from the overall analysis of the chart and its structure, to the description of its different character traits.

In the first part, an overall analysis of the chart enables us to figure out the personality's main features and to emphasize several points that are confirmed or not in the detailed analysis: in any case, those general traits are taken into account. Human personality is an infinitely intricate entity and describing it is a complex task. Claiming to rapidly summarize it is illusory, although it does not mean that it is an impossible challenge. It is essential to read a natal chart several times in order to absorb all its different meanings and to grasp all this complexity. But the exercise is worthwhile.

In brief, a natal chart is composed of ten planets: two luminaries, the Sun and the Moon, three fast-moving or individual planets, Mercury, Venus and Mars, two slow-moving planets, Jupiter and Saturn, and three very slow-moving planets, Uranus, Neptune and Pluto. Additional secondary elements are: the Lunar Nodes, the Dark Moon or Lilith, Chiron and other minor objects. They are all posited on the Zodiac wheel consisting of twelve signs, from Aries to Pisces, and divided into twelve astrological houses.

The first step is to evaluate the importance of each planet. This is what we call identifying the dominant planets. This process obeys rules that depend on the astrologer's sensitivity and experience but it also has precise and steady bases: thus, we can take into account the parameters of a planet's activity (the number of active aspects a planet forms, the importance of each aspect according to its nature and its exactness), angularity parameters; (proximity to the four angles, Ascendant, Midheaven, Descendant and Imum Coeli or Nadir, all of them being evaluated numerically, according to the kind of angle and the planet-angle distance) and quality parameters (rulership, exaltation, exile and fall). Finally, other criteria such as the rulership of the Ascendant and the Midheaven etc. are important.

These different criteria allow a planet to be highlighted and lead to useful conclusions when interpreting the chart.

The overall chart analysis begins with the observation of three sorts of planetary distributions in the chart: Eastern or Western hemisphere, Northern or Southern hemisphere, and quadrants (North-eastern, North-western, South-eastern and South-western). These three distributions give a general tone in terms of introversion and extraversion, willpower, sociability, and behavioural predispositions.

Then, there are three additional distributions: elements (called triplicity since there are three groups of signs for each one) - Fire, Air, Earth and Water - corresponding to a character typology, modality (or quadruplicity with four groups of signs for each one) - Cardinal, Fixed and Mutable - and polarity (Yin and Yang).

There are three types of dominants: dominant planets, dominant signs and dominant houses. The novice thinks astrology means only "to be Aries" or sometimes, for example, "to be Aries Ascendant Virgo". It is actually far more complex. Although the Sun and the Ascendant alone may reveal a large part of the character - approximately a third or a half of your psychological signature, a person is neither "just the Sun" (called the sign) nor just "the first house" (the Ascendant). Thus, a particular planet's influence

may be significantly increased; a particular sign or house may contain a group of planets that will bring nuances and sometimes weaken the role of the Ascendant, of the Sun sign etc.

Lastly, there are two other criteria: accentuations (angular, succedent and cadent) which are a classification of astrological houses and types of decanates that are occupied (each sign is divided into three decanates of ten degrees each). They provide some additional informations.

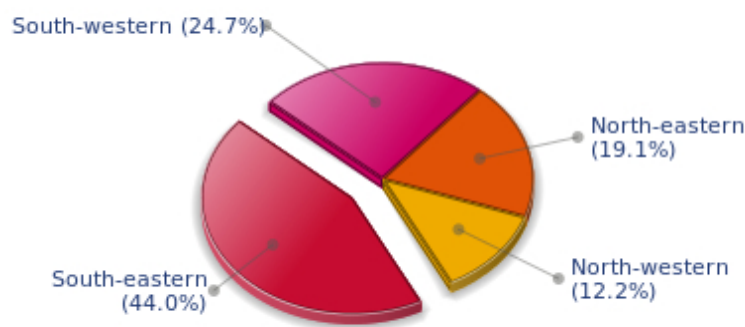
These general character traits must not be taken literally; they are, somehow, preparing for the chart reading. They allow to understand the second part of the analysis, which is more detailed and precise. It focuses on every area of the personality and provides a synthesis of all the above-mentioned parameters according to sound hierarchical rules.

As explained in the introduction of your Psychological Portrait report, minor dominants are analysed at the end of Annex 1, for purposes of clarity.

Your Planetary Repartitions

Each quadrant is a combination of the four hemispheres of your birth chart and relates to a character typology. The Southern hemisphere – the top of your chart, around the Midheaven – is associated with extraversion, action, and public life, whereas the Northern hemisphere prompts to introversion, reflexion, and private life. The Eastern hemisphere – the left part, around the Ascendant – is linked to your ego and your willpower, whereas the Western hemisphere indicates how other people influence you, and how flexible you are when you make a decision.

Your Four Quadrants

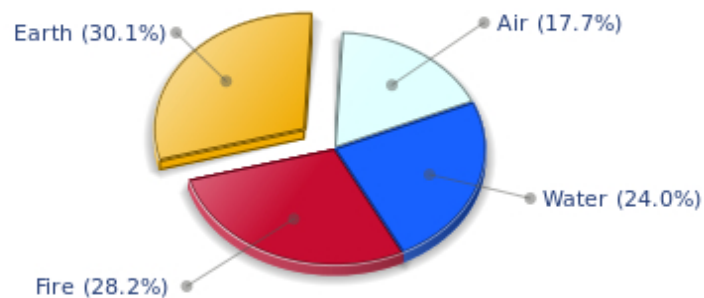


Orlando Bloom, the diurnal South-eastern quadrant, consisting of the 10th, 11th and 12th houses, prevails in your chart: assertion and goals achievement are at the centre of your concerns. You are very keen to implement your dreams and your plans. You achieve your ambitions as soon as possible, whether through an active social life, highly charged friendly relations, or an urge to take actions in order to reap - in the eyes of the world, of course - the rewards of your dynamism. It is likely that spirituality or humanitarian actions are part of your motivations, sometimes at the price of some degree of isolation.

Your Dominant Modes and Elements

Orlando Bloom, here are the graphs of your Elements and Modes, based on planets' position and angles in the twelve signs:

Your Four Elements

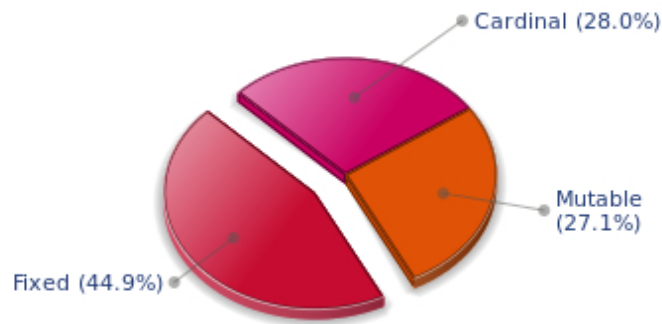


Like the majority of Earth signs, Orlando Bloom, you are efficient, concrete and not too emotional. What matters to you is what you see: you judge the tree by its fruits. Your ideas keep changing, words disappear, but actions and their consequences are visible and remain. Express your sensitivity, even if it means revealing your vulnerability. Emotions, energy and communication must not be neglected; concrete action is meaningless if it is not justified by your heart, your intellect or your enthusiasm.

Orlando Bloom, Fire is dominant in your natal chart and endows you with intuition, energy, courage, self-confidence, and enthusiasm! You are inclined to be passionate, you assert your willpower, you move forward, and come hell or high water, you achieve your dreams and your goals. The relative weakness of this element is the difficulty to step back or a kind of boldness that may prompt you to do foolish things.

The twelve zodiacal signs are split up into three groups or modes, called quadruplicities, a learned word meaning only that these three groups include four signs. The Cardinal, Fixed and Mutable modes are more or less represented in your natal chart, depending on planets' positions and importance, and on angles in the twelve signs.

Your Modes



The Fixed mode corresponds to a majority of elements in your chart, Orlando Bloom, and represents the desire for security and durability: you are able to concretely appreciate a situation and its stability. You definitely prefer to play the role of a loyal, obstinate and hard-working person, rather than to try new and risky experiences - beware, however, not to confuse obstinacy with intransigence. You structure, cement, and strengthen everything you find on your way: it is your nature, although you are not especially interested in swiftness: slow and steady...

Your Dominants: Planets, Signs and Houses

The issue of dominant planets has existed since the mists of time in astrology: how nice it would be if a person could be described with a few words and one or several planets that would represent their character, without having to analyse such elements as rulerships, angularities, houses, etc!

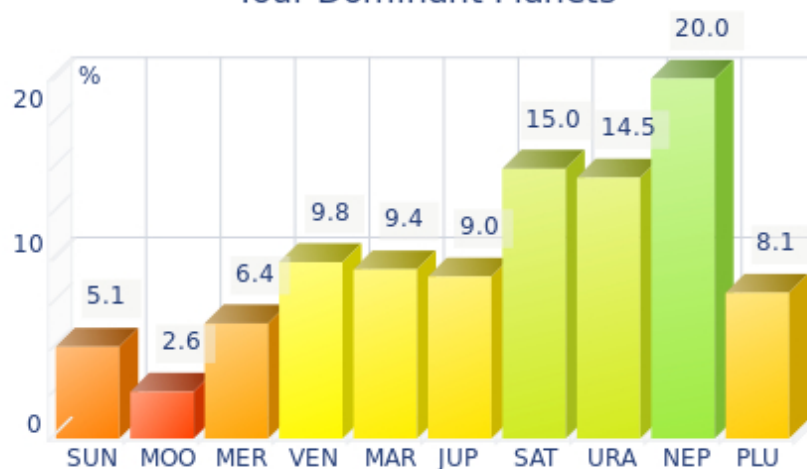
The ten planets - the Sun throughout Pluto - are a bit like ten characters in a role-play, each one has its own personality, its own way of acting, its own strengths and weaknesses. They actually represent a classification into ten distinct personalities, and astrologers have always tried to associate one or several dominant planets to a natal chart as well as dominant signs and houses.

Indeed, it is quite the same situation with signs and houses. If planets symbolize characters, signs represent hues - the mental, emotional and physical structures of an individual. The sign in which a planet is posited is like a character whose features are modified according to the place where he lives. In a chart, there are usually one, two or three highlighted signs that allow to rapidly describe its owner.

Regarding astrological houses, the principle is even simpler: the twelve houses correspond to twelve fields of life, and planets tenanted any given house increase that house's importance and highlight all relevant life departments: it may be marriage, work, friendship etc.

Orlando Bloom, here is the evaluation diagramme for your planets:

Your Dominant Planets



The three planets that are most highlighted in your chart are Neptune, Saturn and Uranus.

With Neptune as one of your three dominant planets, you are a secretive and ambiguous person, often confused or unclear about your own motivations! Indeed, you are endowed with unlimited imagination and inspiration, as well as with an extreme sensibility that may turn you into a psychic or a clairvoyant. On the other hand, your impressionability is such that you may have difficulties in separating what is concrete and solid from illusions or dreams.

A mystic, a visionary or a poet, you daydream, like any Neptunian, and you see what few people only can see, all of this being shrouded in aesthetic mists when you are fired with enthusiasm.

A boundless, infinity-loving man like you is inevitably likely to be more vulnerable and easily hurt because of your acute perception of events. In such cases, you are hit full in the face, and you may sink into gloomy daydreamings and dark melancholy.

That said, this mysterious aura definitely gives you an indefinable charm in the eyes of your close friends who are often fascinated by your unique ability to feel and to see what ordinary people can never see!

Saturn is part of your dominant planets: among the facets of your character, you have a grave and serious side, wise and somewhat severe, since your concentration can be powerful, to the detriment of carelessness and friendliness.

You often look austere, but it is only an appearance, a kind of modesty or reserve; however, it is true that the Saturnian, who is fond of time, effort, asceticism, rigour and sobriety, may have popularity issues. Nevertheless, honesty and straightforwardness, reliability, as well as slow, wise and deep mental process, although not very popular and visible qualities, eventually become noticed and appreciated. Saturnians' second part of life is usually easier and more fulfilling.

Like the Jupiterian, your Saturnian facet prompts you to seek the essential, security, and longevity. However, the difference with the former is that you will never give priority to wealth or "the bigger, the better" philosophy for the sake of power. Saturn, like Jupiter, symbolizes social integration, and it is usually considered positive to have a harmonic Jupiter and Saturn in one's chart because of their social

adaptation capacities.

Your vulnerability lies in your too serious and austere side, which may lead to unwanted loneliness and affective frustration. This generally does not last because Saturnians often hide deep down a golden heart that ends up revealing itself...

Uranus is among your dominant planets: just like Neptune and Pluto, Uranian typology is less clearly defined than the so-called classical seven planets that are visible to the naked eye, from the Sun to Saturn. However, it is possible to associate your Uranian nature with a few clear characteristics: Uranus rhymes with independence, freedom, originality, or even rebelliousness and marginality, when things go wrong...

Uranus is Mercury's higher octave and as such, he borrows some of its traits of character; namely, a tendency to intellectualize situations and emotions with affective detachment, or at least jagged affectivity.

Therefore, you are certainly a passionate man who is on the lookout for any kind of action or revolutionary idea, and you are keen on new things. Uranians are never predictable, and it is especially when they are believed to be stable and well settled that... they change everything - their life, partner, and job! In fact, you are allergic to any kind of routine, although avoiding it must give way to many risks.

Your Dominant Signs



In your natal chart, the three most important signs, delineated according to the above-mentioned criteria, are, in decreasing order of strength, Capricorn, Sagittarius and Scorpio. They are often prominent because your Ascendant and your Sun are posited there. However, it is not always the case: it may be because they are occupied by a cluster of planets, by a planet near an angle other than the Midheaven and the Ascendant, or because two or three planets are very active and form numerous aspects from these signs. Therefore, you partly take on the three signs' characteristics, which are somehow superimposed on your natal chart, and all the more so if any of the signs in question is highlighted.

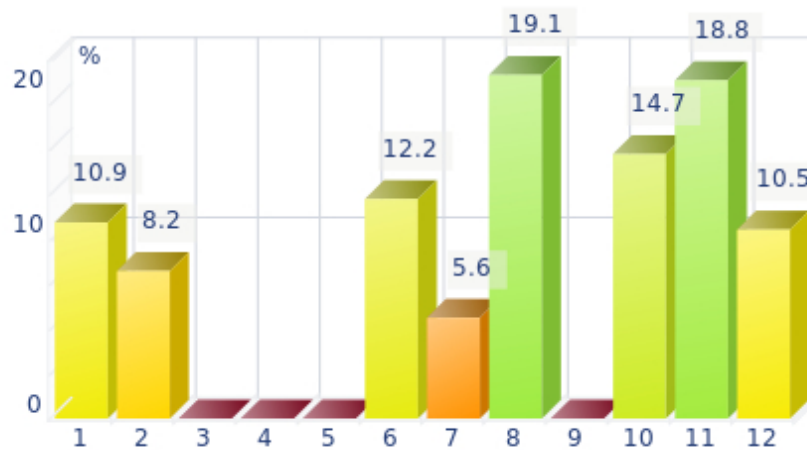
Capricorn is one of your dominant signs and endows you with a grave and serious style that seems to stick to you constantly. But if you have that reserved and cold side - as some extrovert people may think - on the other hand, you possess sturdy qualities: you are strong-willed and tough. Your long-term vision,

your sense of duty, and your ambition are not affected by the derisory and erratic motions that seem to upset most mortals less steady than you. Besides, you are like a good wine, you age well and your natural solemnity or serious side paradoxically turns into an almost cheerful appearance, as you grow older. You are actually very sensitive when it comes to love. Faithful, caring, sweet, and sensitive, your behaviour is very different in your everyday, sentimental life. A golden heart beats under your tough and austere appearance...

Sagittarius, an adventurous and conquering fire sign, is dominant in your chart: you are enthusiastic, enterprising, optimistic, very sociable, and mobile - you have itchy feet, both physically and mentally. Nobody gets bored with you because you are always planning things and suggesting excursions, at least... when you are around and not already gone on a trip! Obviously, so many movements for one man may scare people off, and some of them may even criticize your brutality or your tendency to lose your temper, but you are so warm and genuine, so expansive, isn't this a good thing? And all the more so, since your sense of humour is overwhelming...

With Scorpio as a dominant sign, you are a strong and astute person, complicated and passionate, sometimes destructive and intolerant, but strong-willed, tough and daring, sometimes bordering on aggressive. So many qualities and dangers combined in one person! Obviously, this often results in a natural selection of people around you: those who stand up to you or admire you and those who can't bear you anymore! But that is precisely what you want. You are what you are and you are not going to transform yourself just to please. You are too proud and you never dread confrontations, although your way of fighting is secret, like your nature that, mysteriously enough, you are so reluctant to reveal even to your close friends who will never understand you. That said... what a hellish charm you have!

Your Dominant Houses



Houses 8, 11 and 10 are the most tenanted ones in your natal chart. To compute their strength, planets and angles are weighed according to various astrological criteria such as swiftness, activity, angularity, rulership etc. From the analysis of the most tenanted Houses, the Astrologer deduces the fields of activity that are most relevant to you, be it because of what you are experiencing, or what you may experience in the future, or because of your deep inner motivations.

Your 8th house is very highlighted: it is the most complex house of the Zodiac. It symbolizes above all passion and transformation, which often go hand in hand. Indeed, you have a tendency to experience everything to the bitter end, and you overstep propriety borders because you want to understand

everything, even what is... forbidden. This house relates to complex spheres such as sexuality, possessions and dispossessions that don't depend on you (inheritances, donations, sudden financial losses), death too - not yours in particular, so, don't worry! - and understanding of hidden or occult things: here are the fields that affect you generally, because you are naturally interested in them or because life gets you involved in spite of yourself.

The 11th house is among your dominant houses. Therefore, social life and friendships are very important, even strategic to you.

You think that group activities, whether in the humanitarian field or simple gatherings of friends, are endless sources of inspiration and of enjoyment, provided that there are no tensed aspects in this sector. Everything human is important to you, often more important than your own success, unless your 10th house is also powerful.

With a prominent 10th house, your destiny's achievement may be very notable: the 10th house represents your career, your public life, and your ambitions. A good deal of your energy may thus be used to successfully implement what you have in mind. Instinctively, you are very keen to make your dreams come true. Sooner or later, you will deal with the public, and your personal achievement will go through trials and ordeals: other people and visible actions.

Your Style, Behaviour, and Peculiarities

What is commonly known as "sign" indicates the position of the Sun in the Zodiac. The Sun highlights all the characteristics of the sign he tenants. According to astrology traditional rules, these characteristics are all the more pure and exact when the Sun is strong in the sign, or when the sign is particularly highlighted within the chart. Here, we indicate the pure characteristics of the sign but you must bear in mind that they may only shed a light on a particular aspect of your personality. Indeed, the sole sign of the Sun, or of the Ascendant, can never describe an astrological chart because it depends on the degree of strength of the said sign in your chart.

Another important point must be underlined. Contrary to the Ascendant, which clearly describes your appearance, your vitality, your physical constitution, your spontaneous behaviour and the image you project, your Sun sign describes your inner self, which you may not completely be aware of, and which may emerge gradually as you mature: it is about your inner personality that you reveal only to the members of your entourage whom you trust. The Sun sign is likely to be the final form of your personality, once it has evolved in line with the energies of the other parts of your chart, the beginning of which is seen in the Ascendant, your external "bark".

The Ascendant is one of the major components of your natal chart. It is the zodiacal sign that rises in the East at the very moment of your birth. To calculate it, it is therefore necessary to know your exact time of birth.

It provides with a wealth of information on your personality. It is one of the key features that allows the analysis of several parts of you, such as your appearance, your character as it is initially perceived and your immediate behaviour. It describes the external aspect of your personality which you always display, but it also describes your physical constitution in the long-term, in other words, your health.

Please be aware that, in spite of the importance of the Ascendant, the accuracy of its description depends on how strongly highlighted it is in your natal chart. We use the entire set of astrological rules to assess the strength of the Ascendant. In most cases, the Ascendant is as revealing as your "sign", i.e., the sign where the Sun is posited at the time of birth.

You were born under the sign of Capricorn and your Ascendant is in Aquarius

Before broaching the details of the meaning of your Sun and your Ascendant, as a preamble, we offer a brief generic interpretation of their combination in your chart:

Your personality is quite inaccessible... However, you seem communicative and sociable, all qualities given by your Aquarius Ascendant, an Air sign spurred by humanistic aspirations and endowed with an original mindset which is open to newness. When you are in society, you display a benevolence which easily attracts many friends, whom you never want to disappoint. You are deeply interested in the differences other people have to offer, and you are hardly shocked by the most eccentric ideas, on the contrary! Nevertheless, Aquarius fuels an obsession, whether it is about a hope or a project to be carried out with friends, and it seldom gives it up. Beneath these angelic and generous manners, your Ascendant adamantly sticks to its opinions. All things considered, your Aquarius Ascendant agrees with your Capricorn inner self, which is equally impervious to people's advice and influence. You are somehow

indifferent to the fluctuations of your environment, and you show your true personality to your close friends only. Your intellectual rigour and discipline, inherited from Saturn, amaze those who thought that you were exuberant and idealistic, two features proper to Uranus. You plan your life with your long-term vision and your cold pragmatism. Nevertheless, your sense of humour sometimes pops up and disconcerts your interlocutors because it is either off-beat, which is typical of Aquarius, or cynical, which is specific to Capricorn.

You were born with the Sun in Capricorn

Psychologically speaking, your nature is introverted and cold, totally controlled and phlegmatic, at least regarding the image you project invariably. You seem unemotional and austere. Actually, due to your secondarity, you chew over your strategies or your reactions required by your environment. You are slow but very thoughtful, solid and balanced. You are as curt as you are cold and you put the entire strength of your character at the service of your huge and long-term ambition or of your detachment from earthly riches and you focus on spiritual values.

Like all the persons born under an apparently reserved and tough sign, your inner personality is often charming and gentle, as if the thick armour, forged throughout childhood, had entirely preserved the purity and the warmth of the soul imprisoned within.

As you are born under this sign, you are serious, cold, disciplined, patient, focused, thoughtful, ambitious, indomitable, cautious, lucid, persistent, provident, steady, introverted, stern, wilful, hard-working, responsible, persevering, honest, realistic, loyal, reserved, resolute, moralistic, quiet, rigorous, attached and reliable. But you may also be curt, withdrawn, calculating, petty, cruel, unpleasant, ruthless, selfish, dull, rigid, slow or sceptical.

Sir, in love, you may feel less interested than the other Zodiacal signs because you repress your feelings and you practice so much self-control. You want to keep situations under full control, in all circumstances, although love is the only area where progress requires a laid-back attitude, where it is necessary to give in order to receive, all things which are difficult for you.

Therefore, you are alone for a long part of your life until you meet with the love of your life, to whom you will be faithful and attached, beyond reproach. Capricorn has very few but intense and lasting love affairs.

Daily life within your couple is responsible and serious. It may not be too bubbling, but your feelings' sustainability and solidity make for your lack of spontaneity and extravagance. You may not be very available, as all your time is taken up by your work and the pursuit of success. You are very keen to marry a person who can share your professional interests, which does not lessen the quality of your attachment at all.

Your home is sound, with an atmosphere of seriousness. The effort-oriented education, which you give your children, is respectful of the best traditions.

Your Ascendant is in Aquarius

In the sentimental sphere, you are particularly sensitive to the values of friendship, in the sense that you see yourself as a link within a chain, certainly a different and original one, but with no will to flatter your ego or to individually assert yourself. On the contrary, your aim is to immerge yourself in your friendly relations and to participate in projects and ideals of the whole human community.

As you are born under this sign, you are idealistic, altruistic, detached, independent, original, surprising, gifted, contradictory, innovative, humanistic, likeable, friendly, self-confident, impassive, quiet, intuitive, creative, charitable, elusive, disconcerting, generous, tolerant, paradoxical, and you cannot stand any kind of constraint. But you may also be marginal, resigned, distant, utopian, maladjusted, eccentric and cold.

In love, Sir, you are totally elusive. The human warmth you show in your group meetings quickly turns into a distant and sober attitude as soon as you are alone together. It is obvious that it may cause some problems if you were thought to be different. Your reluctance to talk about yourself, although not disturbing under other circumstances, is quite inappropriate in the private sphere.

The distance you maintain, as well as your lack of emotionalism, may suddenly disappear to give room for a real relationship, since you are prone to mood swings. The necessary condition is that you have centres of interest to share with your partner. Converging passions will ensure that the magic of your relationship can develop. Ideally, a deep friendship should be the basis of your initial relationship, because friendship is a feeling that particularly suits you; in such a case, imperceptibly, conducive closeness may transform friendship into the true love you give yourself up to eventually.

You are loyal, faithful and surprising. Once you find your soul mate, you feel more comfortable and, if the harmony with your partner is rich enough, you may stay with her your whole life through. You certainly have moments that seem strange to your partner, for instance when you are impersonal or even cold. But your natural magnetism, your communication skills and your shrewdness as you play with words, work wonders for patching things up.

You avoid problems that may cause emotional or sentimental complications. Because you are often disconcerting, your partner may need some time to adjust: you disappear suddenly when you do not want to deal too closely with your individuality. And you reappear as quickly with excuses and a charming casualness, and again, you are disconcerting!

You are interested in things that are out of the ordinary. Your erotic imagination may be immense and inexhaustible. You belong to the cerebral type and you cannot separate physical and sentimental aspects from your imagination's intense activity. As a result, you explore with lucidity all the possibilities that may suit you best.

The ruler of your chart is in Scorpio

The ruler of the Ascendant, also referred to as the chart ruler, brings a few interesting nuances to the meanings provided by the Sun and the Ascendant. The sign in which the ruler of the Ascendant is posited fine-tunes the style of personality described by the Sun and the Ascendant. It may strengthen it if the sign is identical to either of them.

The ruler of the Ascendant, Orlando Bloom, is Uranus. It is posited in the sign of Scorpio and makes you appreciate mysteries and the unknown. You need to understand, to solve riddles, and to take action behind the scenes, perhaps so as to be even more efficient. Your criticising skill is a weapon, but it may also backfire on you, just like your sometimes excessive obstinacy.

Aspects to your Ascendant

Several planets form an aspect with your Ascendant, Orlando Bloom. Therefore, in their specific way, they modify your behaviour and your personality, which do not take on the pure characteristics of your Aquarius Ascendant only, but which are a blend of its characteristics with those of the said aspects.

★★★★☆ Jupiter square Ascendant, orb -0° 3'

A dissonance between Jupiter and the Ascendant is not too serious, Orlando Bloom. In some circumstances, it may cause your behaviour or your opinions to be a bit exaggerated when you are in society. Therefore, you may come across as too proud or excessive. It is up to you not to overdo, so as not to arouse your entourage's incomprehension. This excess may also translate into a marked taste for pleasures or good food...

★★★★☆ Saturn opposite Ascendant, orb -6° 4'

Saturn is in opposition to your Ascendant, Orlando Bloom. It means that at the same time, he also is in conjunction with your Descendant, the angle which symbolises your rapport with other people. This configuration endows your behaviour with a tone of solemnity and seriousness that some people may claim to be ... overwhelming! Therefore, you must absolutely be aware of this configuration, and force yourself to a more laid-back attitude, especially in your romantic relationships or in your marriage. This type of relationships precisely requires that you open up if you want to succeed, whilst solemn Saturn often curbs your spontaneity. If you are fully aware of this fact, you can turn your sober features into strength, and your often belated marriage can be a great achievement!

★★★★☆ Pluto trine Ascendant, orb 7° 29'

Pluto, the planet of instinct and secret, is in soft aspect with your Ascendant, Orlando Bloom. It endows you with exceptional lucidity, which enables you to behave in society in an appropriate, though slightly scathing and domineering way. You exploit your nose and your magnetism, and you do so very successfully!

★★★★☆ Sun semi-sextile Ascendant, orb -1° 23'

Your will is fuelled by a strong energy, Orlando Bloom. It enables you to take quick decisions which totally match your personal ethics. Thanks to this good harmony between the Sun and your Ascendant, you feel rather good about yourself, and your inner self perfectly matches the image you are willing to show!

Your Sensitivity

Your sensitivity is intuitive and clear-sighted Orlando Bloom. Your exacerbated affectivity and your emotions are secretive, intense, deep and sensual. Your magnetic nature seduces. You are aware of the strange fascination you exert and you gladly cultivate this mysterious aura. Your feelings are so powerful that you may feel you should repress them sometimes. But the more you try to control them, the stronger they grow. Therefore, your jealousy may reach such levels that it may hurt. Without half-measure, you become aggressive and you can harm because your inner radar instinctively detects other people's weaknesses. Your emotions are often filled with eroticism and you are an explosive blend of lucidity, amorous intensity and constant provocation but... you are so charming! Your nature is attractive, even bewitching. After all, the only persons you offend are the middle course followers...

Orlando Bloom, your emotions are intense, even violent sometimes. You feel things and react with so much strength that it may torment you! On the other hand, you are extremely intuitive, warm, imaginative and you possess a kind of indefinable charm full of density and mystery. Your sharply developed intuition endows you with a predisposition to clairvoyance.

Matters linked to death and inheritances, family investments etc., may play an important role in your destiny. Your mother often has a prominent role and may strongly influence your major life decisions until you become an adult.

★★★★★ Moon semi-square Neptune, orb -0° 14'

This Moon-Neptune dissonance wonderfully turns on the poetic soul, the exhilaration of feelings and dreams... and disturbs your practical life, as well as the management of contingencies. You do not lack inspiration but your reasons of living may be beyond your entourage's understanding! Bohemian life is pleasant but it is probable that you experience muddled situations. Your aims are noble and your intentions are very good. But you may not have the will to turn them into reality. It is important that you are wary of artificial paradises: escaping in the imaginary is not necessarily the best solution for problem solving. You are in search of an inaccessible tranquillity and you tend to procrastinate chores. Nevertheless, facts remain present and you may see that non-interventionism can only increase your difficulties. You must put an end to this vicious let-go circle. This does not imply that you have to forsake your dreams or to repress your very rich sensitivity.

★★★★★ Sun square Moon, orb -7° 13'

In your chart, two polarities are clearly opposing - or complementing – each other: on the one hand, solar values, the image you project and the models you follow. On the other hand, lunar values, moments of letting-go and well being through casualness. When you commit yourself in a project, it is often to the detriment of your peace of mind. Conversely, you completely feel that you are your true self only when you are no more under the scrutiny of the outside world. Therefore, you separate your social and professional activities from your private life and you seldom match the requirements of the former with those of the latter. It may be a hurdle, a fundamental anxiety. It may also be an obvious asset, when it is well integrated: in that case, you succeed in assigning to yourself, and in fulfilling, objectives that are not necessarily in line with your intimate natural demands, which are preserved and separated from your intentions, your ambitions and your expectations. Thus, a strong will can turn this Sun-Moon hard aspect into a rich instrument for creativity. A shadow zone, or uncertainty, still remains: on the affective plane, you are very sensitive. May be too much, to the extent that you become vulnerable in many circumstances. Because in different periods of your life, your landmarks (solar) and your intimate balance (lunar) will be simultaneously challenged.

Your Affectivity

In your chart, the Sun is in Capricorn and Venus, in Pisces. Your solar and Venusian signs have in common their imperviousness. Your character is uncommunicative, impenetrable, inaccessible and demanding. Capricorn's values do not include things that are easy. He responds to external stimulations only after a thorough and lengthy thinking. In love, he must ascertain the nature of the ground before he commits himself. This is the strength of the sign, as well as its weakness. You lack the spontaneity and the natural impulse that bring about frequent amazements and easy conquests. It seems difficult to bridge the gap that separates you from "ordinary mortals" Your specific sensitivity (Venus in Pisces) and your reserve (Sun in Capricorn) may be disheartening. It is a pity, because beneath your disconcerting amorous behaviours, there is a sensitivity all on edge and a receptiveness, which precisely exclude hasty commitments. You do not want to hurt, you do not want to endanger the fragile balance of your actually tender heart. Therefore, you maintain a safe distance in order to protect what is essential to you and you remain true to yourself, preferably in the company of your partner. You give a lot and likewise, you give yourself.

Compassion and self-sacrifice: you are fond of this romantic mode and you are willing to express your feelings, the intensity of which is unlimited, Orlando Bloom. With excitement and imagination, you dream your amorous relationships as much as you actually live through them. The line between the concrete world and your huge hopes is so tenuous that you don't know anymore where it is, although your particularly rich sensuality prompts you to experience your feelings concretely. You want to share communion and passion with your partner. The lyrical flights of your feelings break from your heart as waves that you do not attempt to control because they give you a real, almost voluptuous and carnal joy. You give a lot – sometimes too much - without reservation, almost without propriety, totally revealing your vulnerability during your amorous exchanges because you are sure of the quality and the might of your feelings: they are so powerful and overwhelming that you are aware that nothing can resist them.

Orlando Bloom, Venus in the 1st house (also called Ascendant) represents your behaviour or your character, as seen by others. This position contributes to soften your personality and to bring a natural charm and an easygoing quality. It gives you a sparkling, attractive and sexy side: not only do you easily express your feelings in a seductive and affectionate way, but they are also an integral part of your vision and the image you project. You want to please, you have a taste for beauty, even luxury, arts, music, you especially look for harmony in everything and diplomacy is one of your most renowned qualities. Therefore, you are lucky in the sentimental sphere, you establish links easily and you can expect to have long-lasting relations. Since you happily express your feelings, it's only right that you reap what you sow. There is no gap between your behaviour and your feelings, which endows you with exceptional assets for seduction.

★★★★★ Venus trine Uranus, orb -1° 34'

Your charm lies in the originality of your approach to love and in your uncompromising attitudes. Your motto? Freedom of love, whatever the price! Should your sentimental life become dull, you find a solution: you are romantic and you reinvent your couple's life, you give a new and unexpected momentum to your emotions. You create the kind sharpness that contributes to your exceptional affective life. You do not fear love at first sight or blazing passions. On the affective plane, you know where you are heading for, whom you love ... or love not. There is an indisputable intransigence. The heart impulses are irrevocable and implacable. You dream of a sentimental life that fulfils your aspirations and you use all possible means to achieve your ideal. Even though you may have to make the necessary sacrifices.

★★★★★ Venus sextile Mars, orb 0° 26'

With this aspect, innate affective behaviours prevail over opportunisms and calculations. You do not cheat with feelings and you prefer to be guided by your likes ... or your dislikes. Love is neither to be reasoned upon nor to be explained. It is important to experience one's passions spontaneously and to give free rein to the heart's tumultuous manifestations as well as to the body's demands. In other words, to be one's true self in the "now". You need to live intensely, to try all kinds of situations, sometimes to get hurt. Your sensitivity is the driving force behind your decisions and your actions. Real experiences are worth the best intellectual concepts. Spurred by your thirst for emotions, you try to build your life on bases that match your desires. Here, the trap may be that you pay too much attention to your moods and affects. But without them, life would be so dull. Even though emotionalism betrays you occasionally, it remains your best ally.

★★★★★ Mercury sextile Venus, orb 1° 27'

This aspect sensitizes you to games of seduction. You like to multiply romantic undertakings, you invent new reasons to seduce or to be seduced. Although your romantic life is not a model of stability, it is full of discoveries, varied emotions, both sensual and cerebral. You know how to earn your entourage's liking through your acute sensitivity. You play around with feelings, with relationships and with love... Mercury and Venus commonly share the capacity to sensitise to human topics. Your receptivity towards others is high. Your broad-mindedness goes hand in hand with your heart's generosity. You pay particular attention to the way people look at you and the effect you make when you meet or exchange with someone. Actually, you expect a lot from others: acknowledgement of your qualities, as well as esteem and consideration. You may also be touchy beyond what you may give to think. In many instances, relationship games may turn out to be more serious than expected.

★★★☆☆ Venus square Neptune, orb -5° 2'

You are very idealistic in love and you may be blind. In many circumstances, you deem your sentimental life heavenly and you lay yourself open to delusions. Love is a dream and waking up is often painful. Your imagination distorts the game of intimate situations. It is important that you keep your sense of reality and that you avoid to embark upon dark or muddled paths. Forget about artificial paradises! The Tradition very rightly insists on the tendency for impossible love affairs. Your demand and your thirst for the absolute may make you dread to experience a common life that is inevitably flawed with compromises and vagaries. The object of your affection is idealized « because it was her, because it was me » and you do not reckon objective elements that will resurface later in full force. With this planetary configuration, the danger is in the idealistic, even fanciful, nature of your affectivity. It is certain that love cannot be bought or reasoned. But how is it possible to live an absolute passion on a daily basis? You must control your heart impulses and, without losing the sentimental riches that are part of your charm, you must put what you love in harmony with what you dream of.

★★★★★ Venus quintile Jupiter, orb -0° 32'

Charm and seduction are your assets. This harmonious Venus-Jupiter aspect favours your affective fulfilment and your sentimental well being. You earn your entourage's sympathy thanks to your conciliating sensitivity, your desire to please and your behaviour in society. In many circumstances, you arouse esteem and consideration – essential values to you. You like social whirls, life in society, the aesthetics and the arts. You often tend to look for the easy way out in your business and your affective relationships. You are known as a complacent person. However, your amorous commitments may be quite superficial. It is important that, without breaking the spell, you opt for a more genuine attitude, respectful of your essential desires. As we all know it, love cannot be bought. An indication of balance:

because you are aware that compromises are necessary for a love affair to endure, better than anyone else, you know how to maintain harmony in love.

★★★★★ Sun semi-square Venus, orb 1° 38'

The Sun and Venus form a mild dissonance in your natal chart. There is nothing very serious to worry about. There is only a small gap between what you really want on the one hand, and your natural need to charm and the warmth you display on the other hand. Thus, will and affectivity are slightly out of phase, but it is most likely that you are the only one who feels it. This is a quite trivial characteristic, and you probably do not have to correct it, since it is so mild.

The Way You Take Action and Your Sexuality

Orlando Bloom, you are so resistant and so solid that you are able to cope with any challenge, any ordeal. You behave with persistence, rigour and discipline. You are so obstinate and patient that no effort is impossible to you, as if sensitivity and emotions were unable to divert you from your goals. With calm and lucidity, even coldness, you face up to things and you plan on a long-term basis. Nothing and no one can prevent you from fulfilling your responsibilities. You are a rock, a hard worker, and your iron will equals your resistance to blows. Your practical sense is at the service of your ambition which is real and energetic, even though it may not be obvious. Sexually, you are active and vigorous. If you show more warmth, you may become an excellent lover; indeed, being demonstrative is not your major concern.

It is in the area of friendship and collective life (common projects, associations, etc.) that you express your impulsivity, your warmth, and your capacity for action, Orlando Bloom.

You are cut-and-dried and your motto is "either succeed or die". In case of success, it is your responsibility to make the relationship last because you are not the submissive type and you hardly compromise. You put a lot of passion in your friendly relationships. You are not interested in lukewarm or insipid acquaintances. Things must be moving, even though it may mean that the relationship is cut short.

In any case, you enjoy participating actively within a community and, whenever possible, you take the leadership role, in your own way. As soon as you are more or less under the public eye, you become enterprising. When you are on your own, you do not feel the need to use your energy.

★★★★★ Mars sextile Uranus, orb -2° 01'

This harmonious Mars-Uranus aspect indicates an unshakable determination and the will to further your ideas through drastic, sudden, sometimes dramatic actions. You bend the string of your bow before taking action and you hit at the right time. The secret of your feats? An excellent command of your blitz actions. You concoct your plans in the dark, and then you move to an efficient and quick execution step that is often dazzling. You do not have the temperament of a loser. When you face an ordeal, you focus your entire energy and will on your unique aim: victory over any obstacle. This planetary configuration may lead to dangerous, even heroic actions. The danger is that you may over-estimate your strength or your chances for success.

★★★★★ Mars square Pluto, orb -4° 54'

There is a limit to your respect for laws and norms! Morals, conventions, social marks are of little value to you. With a touch of anarchy in the soul, you disregard conventions and you experience a sort of personal revolution. You prefer unconventional actions to dull conformism. To express your differences, you use a wide scope of possibilities that ranges from brewing revolt to ideological renunciation. Sometimes, you dismiss concrete facts that are nevertheless unavoidable. Hence, you undergo delusions and backlashes. You may also act rashly, to the detriment of your ideals. It is important that you control your actions and that you balance the respect for constraints with your personal demands and inner motivations.

★★★★★ Mars bi-quintile Saturn, orb 0° 16'

Persistent action always bears fruit eventually. All that is needed is patience... A quality you have, undoubtedly. As confrontations become unavoidable, you show strong persistence and indisputable perseverance. Potential obstacles are more stimulating to you than they are discouraging. You are naturally fit for effort and for confronting realities and facts. You quickly overcome difficulties and you respond to crises in an efficient and considerate manner. You are enduring. You handle events with rigour and precision. These are valuable qualities nowadays, for they often come with the capacity to undertake adventurous experiences and to take limited risks!

Your Intellect and Your Communication Style

You need to concentrate on a subject, Orlando Bloom, to deepen your research and to follow your reasoning through with persistence and determination. You are the very type of the thinker who needs time and isolation to meditate at length and allow his serious, methodical and rigorous mind to show its worth. Your feet are firmly planted on the ground and to get your attention, ideas must be followed by implementation, for instance as in the case of mathematics applied to physics. You focus on the essential and you look at the world around you with clear-sightedness. You are not very talkative and you act with caution. You may come across as cold and ambitious even though your comments are always sincere and practical. However, be careful not to isolate yourself and to appear as a lofty and intolerant person.

You are intelligent and brilliant as soon as you have identified a goal and you have partners to work with you. You are less inclined to undertake strictly personal projects, Orlando Bloom. Your mind and your curiosity include friends and collective projects. You believe that your particularly well-developed sociability is an asset for them.

Collective works, customers and public domain appeal to you, and you feel that you can achieve in those fields. Your negotiating skills are paradoxically stronger when you face the anonymity of a group rather than in intimate individual exchanges, may be only because you have no real interest in your own projects, for several reasons.

★★★★★ Mercury conjunction Mars, orb 1'

The harmonic Mercury-Mars aspect is the signature of a quick wit and an energetic character. You take decisions rapidly and you implement them straight away. You never accept stiff situations. You need to design, to take action, to fight to express your acute sense of relation: the world, the people, everything is of concern to you... You need to be involved in relationships and in dialogues. Your sharp retorts earn you a reputation of straightforwardness. On the relations' area, your quick wit and your mobility are greatly appreciated. You find the allies and partners you need at the right time. An art of resourcefulness

that is precious...

★★★★★ Mercury sextile Uranus, orb -3° 02'

Your state of mind is innovative and turns the surrounding world into a constantly moving field of experiences. You ask relevant questions ... and you answer them. Although you are flexible when you ought to, your principles and your beliefs are unwavering. It seems difficult to catch you off your guard. You multiply observations, relationships, contacts and you never lose face: actually, your mobility hides an unshakable determination and a deep lucidity. In a split second, you are able to catch the useful information or the enriching relationship. The original and fanciful steps you take exclude monotony. Your approach to life is amazing!

★★★★★ Mercury square Pluto, orb -5° 54'

Forget simplicity! You definitely enjoy acting behind the scenes and dealing with what is going on underneath. You play games and you operate in the dark. You leave the front of the stage to others and to the gullible ones. You don't display much sociability. When you are nice, it is because you are looking for flaws. This Mercury-Pluto dissonance mingles unconscious fantasies with reality. When it is kept under control, this aspect becomes an unparalleled source of discernment. To that aim, you must overcome your strong tendency for provocations. It is certainly amusing to play destabilizing games but it may also be dangerous. Keep this treatment for your opponents only.

★★★★★ Mercury sesqui-quadrate Jupiter, orb -2° 05'

You play with social norms and you scoff at them. Your morality is seldom questioned: you adopt the most rewarding behaviour, precisely the one that wins you your entourage's consideration. But you sometimes cheat. You are an opportunist and you act according to circumstances, particularly because your moral stand is only a superficial mask. You enjoy concealing your beliefs: life is a social game and you change its rules to suit your convenience. Your flexibility and your adaptation abilities are appreciated. However, it is important that you do not behave inconsistently. A stable and transparent course of conduct may help you avoid many pitfalls or delusions. Beware of words spoken thoughtlessly, of empty promises, and do stick to your indisputable cleverness.

★★★★★ Mercury bi-quintile Saturn, orb -0° 44'

Your vision of the world is rigorous and objective. An exemplary logic characterizes your mental attitude and your human relations. Your discerning faculties overlook no detail. You need to know the whys of your life and to explore the backstage of your surrounding world. The deepness of your relations dismisses superficial connections. It may be the reason why your interest is aroused when you are in touch with elements that are alien to your mode of functioning. You have the soul of a researcher, regardless of the form that your investigations may take. It may be an exacerbated curiosity for human topics or a will to understand relationship stakes. It may also be a hobby or a course of study that introduces you to a riddle. It does not matter! Life is a perpetual quest for the unknown. Your critical mind is highly developed and you take commonplaces for granted only after thorough consideration.

Your Goals, Motivations, Career, and Destiny

Your Sun is posited in the 12th House

Orlando Bloom, your desire for accomplishment goes through a quite peculiar and original form, in the

sense that you cannot resist the appeal of mystery and of withdrawing from events and situations. Your natural inclinations often prompt you to isolate yourself and to keep your private secrets intact. Indeed, it is during such privileged moments, when you are alone, that you can recharge your batteries and eventually blossom up.

Somewhere in you, there is a propensity for introversion, quietness and even a kind of isolation, whether they stem from a natural taste or from force of habit. However, beware... you are more secretive and more enigmatic than you are solitary. The reason is because a more or less important part of you (depending on the rest of your chart) is hidden and inaccessible to others.

You are sociable but you appreciate discretion. You often show a real dedication towards people and your compassion is one of the original facets of your personality, which is difficult to figure out. Your individuality is finally forgotten, almost negated in some cases: you are not interested in personal glory, which is all to your credit. You thrive through dedication, volunteer work, humanitarian action and alleviating the distress around you, since you perceive the weight of injustice more acutely than others.

Here is the paradox you are entangled in: the more you keep your distance from society, the more you are successful, at least regarding the things that strengthen you and make you evolve. Working in secret or in a withdrawn environment suits you very well: you are favoured if you are a writer, a painter, a medical practitioner, a psychiatrist or even a monk. You may also work in a penitentiary institution etc., as well as in any occupation conducive to quietness and contemplation. It does not imply that you cannot achieve fame, but when you do, a hidden part of you must express itself in one of the above areas, for your own good.

The Tradition indicates that with this configuration, your evolution goes through ordeals or obstacles that lead to a crisis and to a period of solitude so that you are on your own and, may be, that you have the time to ponder over what is really important in your life journey that seems at first sight so absurd and crazy. Do not worry, there is no such thing as a better predisposition. Everyone has one's own path and yours goes through an unpretentious authenticity, secrecy and the regeneration of your whole being during a few periods of your life, faraway from social whirls and false relations that are time wasting.

Your accomplishment may turn you into the power behind the throne. It may also take you into hidden topics people do not talk about, the supernatural, occultism, great mysteries etc.

Your destiny contains a mysterious part that no one suspects: you are far from being as simple as people might think.

Although nothing appears externally, you know to which extent you are remote from the idea that the majority of people have of you. You are interested in situations that allow you to hide or to withdraw at some periods of your life; it is often due to a series of ordeals. But beyond your reaction of defence while facing events, you have a true inclination for mystery and secret.

You must overcome the periods of isolation or of ordeals because the reward is proportional to what you are entitled to expect: a more rapid moral and spiritual evolution, wisdom, and a blooming personality. Some people may choose small roads in the countryside to unfold their life. You choose highways to earn your salvation and you avoid the socialite and false delusions inherent to an ordinary life in society. More than anyone, you are favoured, you are prompted to overcome pitfalls and to never let pessimism

discourage you.

The ruler of your chart is in the 8th House

The ruler of the Ascendant, also referred to as the chart ruler as explained in a previous chapter, is also posited in one of the twelve Houses of the chart. Just like the Sun in his House, the ruler of the Ascendant provides certain abilities, or it makes you appreciate more keenly certain areas of life.

The ruler of your chart is in the 8th House, Orlando Bloom. This configuration gives you a strong inclination for mysteries, the unknown, the occult, sexuality, as well as death. In the materialistic area, matters of inheritance and, more generally, other people's money - stock exchange, speculations, donations, etc. - may play a major role in your life.

Aspects influencing your ambitions

Regarding your destiny or your career, the following aspects of your natal chart allow to fine-tune what has just been said above:

★★★★★ Neptune conjunction Midheaven, orb 1° 07'

Neptune is in conjunction with your Midheaven, Orlando Bloom. This aspect indicates that your vision of your career and your destiny is idealistic. You seem to adhere to some sort of poetic - and happy - fatality regarding huge changes or your progression towards success. As a consequence, achievements may be beyond your... will. If your professional or social circle fits your ideals, it is very likely that you experience brilliant successes in a sort of euphoria and a feeling of fusion with the world. Sometimes, this aspect indicates that your career is of a Neptunian nature, meaning that it is related to the sea, water, the world of ambiances (night-clubs, show-business, revels, etc.)

★★★★★ Saturn trine Midheaven, orb -1° 04'

Thanks to this soft aspect between Saturn and your Midheaven, your long-term efforts and your perseverance are rewarded, and you gradually climb up the stairs of success. Time is your ally as far as your career and social destiny are concerned. Carry on the good work, and rest assured that your seriousness and your obstinacy are appreciated. They are instrumental in your success, especially during the second part of your life.

★★★★★ Sun trine Jupiter, orb -1° 54'

This harmonious Sun-Jupiter aspect indicates an optimistic background that usually wins the entourage's adherence. It also suggests ambition and generosity and favours social integration and success. The desire to earn general consideration prompts you to display energy, joviality and benevolence. However, opportunism may be the other side of the coin. As you strive to win everyone's esteem, you may fall into disrepute. It is important that you remain clear-sighted so as to persistently pursue your long-term aims without believing that you should always « grab each and every opportunity ». However, this aspect remains an element of success because it allows you to adjust your objectives to the context, to whatever the situation offers or, on the contrary, to force your way through events and to achieve your ideals.

★★★★★ Pluto sextile Midheaven, orb -0° 15'

Pluto is in soft aspect with your Midheaven, Orlando Bloom. Your natural perspicacity and your propensity to move deeper into the understanding of all the things surrounding you may favour your

career. Besides, in some circumstances, secret protections or relationships at work in the dark may very well help you climb up the stairs to success. At the same time, your intuition and your capacity to overcome pitfalls are your constant assets.

★★★★★ Venus square Midheaven, orb -4° 12'

Venus is in slight dissonance with your Midheaven, Orlando Bloom. There is nothing really serious with this type of configuration, except that in some circumstances, you feel that your natural kindness is not acknowledged rapidly enough, or that it is not as appreciated as it should. It may happen that a female, or the fair sex in general, does not correctly understand you, or that she acts against your interests. There are usually no negative consequences since Venus is not a "harsh" planet. It is up to you to put in the effort to better show your sincerity and to avoid any misunderstanding.

★★★★★ Sun quintile Uranus, orb -0° 13'

This aspect reinforces the determination as well as the will to further your original, sometimes revolutionary, ideas and designs. Your capacity of innovation is important for your image. You have the soul of a leader. You display a forceful and synthesizing mind. You may tend to oversimplify or to schematize situations. In most cases, you know where you are heading to and how to reach your goals. Your determination is two-edged... not everybody will appreciate your contrasted standpoints. It is yes or no, black or white! This planetary configuration indicates certainties. When it comes to acting according to your inner motivations and to respecting your models, you can show an unusual willpower and sweep aside all obstacles lying on your path.

★★★★★ Jupiter square Saturn, orb -6° 1'

Jupiter and Saturn form a dissonance in your natal chart. It is far from being horrendous. This planetary configuration, which is deemed somewhere between the individual and collective characteristics, only indicates that your social integration may be delayed, or may encounter a few difficulties. Such slight delays or setbacks often have their origins in your own behaviour. Indeed, since Jupiter represents laws and public life, and Saturn, seriousness and perseverance, in many instances, you may become impatient, or even rebellious to any form of authority or legal constraints, to the extent that you cross the white line... When you face such circumstances, you must resign yourself to listening to reason and accept to wait for your turn, lest... your achievements are even more slowed down by your own haste.

★★★★★ Moon semi-square Midheaven, orb -1° 22'

There is a dissonance between the Moon and your Midheaven, Orlando Bloom. It may indicate a discrepancy between your sensitivity and the goals you set for yourself in life, although this dissonance seldom plays out dramatically. You may feel that your emotions sometimes catch you off your guard in society, and that the level of your popularity is not too satisfactory, without your knowing the reasons why. In some cases, females may thwart your social ascent.

Your Assets and Your Part of Joviality

Orlando Bloom, your practical abilities to organize and to increase your material security are enhanced with the planet of Greater Fortune in this peaceful and warm sign. Your affectivity is strengthened, and so are your taste for comfort and your needs... Undeniably, the possibilities for affective and material fulfilment are favoured. The other side of the coin may be an exaggerated form of materialism.

Orlando Bloom, this Jupiter's position is a heaven-sent present. It increases your earning power and may turn you into a persistent, obstinate and greedy person. You may also be at the same time sentimental and loyal. So, sometimes, material luck and love do work in unison!

The planet Jupiter symbolizes expansion, broadness and generosity. Jupiter is associated with the functions of synthesis, enthusiasm and optimism. In your natal chart, his house position is more important than his sign position because, like Saturn, Uranus, Neptune and Pluto, he is a slow planet. Many people born in the same period have Jupiter in the same sign. This is the reason why the sign occupied here is less meaningful than when it is occupied by the so-called fast planets, i.e. the Sun, the Moon, Mercury, Venus and Mars. Therefore, some caution is to be exercised as you read what follows.

Jupiter in Taurus amplifies your practical sense and your capacity to improve your material life. You can experience a long-lasting fulfilment. You are often a bon viveur who likes life's good things. You manage and develop your patrimony with a lot of luck and generosity. Your taste is very good and your loyalty is genuine.

Your Serious Side

Your ambitions and your self-perception are marked with some degree of detachment. You become less frivolous and more detached from individual and superficial values as time goes by.

The association of the astrological house of effort with the planet symbolising concentration and the necessity to overcome one's fears is not negative in itself. In your daily life and in your work, Orlando Bloom, more than anyone else, you are dependent on your courage and your persistence.

The danger is that you underestimate yourself psychologically, or that you give up a task just because you think that you cannot live up to people's expectations. Your challenge is to gain self-confidence and wisdom and to pursue your effort because in the long run, they will be rewarded.

The planet Saturn symbolizes contraction, effort, time, limitation and concentration. Saturn eliminates anything that is not authentic, sooner or later. It is impossible to cheat him as he gives an irresistible desire to form a coherent whole with oneself, in responsible and wise ways. He is the great purifier. He represents our limitations but also our truth. In your natal chart, the house position where Saturn is posited is more important than his sign position because, like Jupiter, Uranus, Neptune and Pluto, he is a slow planet. Many people born in the same period have Saturn in the same sign. This is the reason why the sign occupied here is less meaningful than when it is occupied by the so-called fast planets, i.e. the Sun, the Moon, Mercury, Venus and Mars. Therefore, some caution is to be exercised as you read what follows.

Saturn in Leo tends to detach you from pleasure and leisure and gives you a serious and responsible nature. These are good qualities if Saturn is not badly aspected, even if your inclination for having fun is not particularly increased by this planetary configuration...

A Few Special Points

Your Uniqueness and Your Utopias

Unexpected events and surprises often occur in quite special areas: finance connected to investments, to inheritances and, more generally, to external possessions or losses (taxes, stock exchange, other people's money), to the fields of occultism and death and, more symbolically, to sexuality.

In general, in one of these fields, you are likely to experience one or several reversals of situation (positive or not), on the material plane but also, as a consequence, in your approach to life and the way you transform your personality in depth.

In any case, you are predisposed to risk-taking, as if some inner force prompted you to create maximal psychological tension, or to challenge yourself in order to know yourself better, or to explore the unknown in a constantly deepening manner.

Your Inspiration and Your Illusions

This configuration indicates a significant probability that your professional destiny – even your general destiny – is linked to collective movements that are beyond you. They may constitute good opportunities to earn your marshal's baton.

Your certainties may be influenced by trends or by your osmosis with collective ideas, often because you are very sensitive to the "spirit of the times". The other side of the coin is that you may become only a representation of a collective ideal, or its victim, and be exposed to scandal or deception.

You have good predispositions for music, comedy and for anything that allows you to quench your thirst for emotions and fusion with the external world and with an audience.

Your Passion and Your Authority

You have a natural strong authority as soon as you are with other people, and you tend to consider relationships as fights that allow you to display your might and your influence, insidiously but obviously, particularly for... the others!

Your contacts and your associations require so much emotional intensity that people who consider that relationships should be light and flowing may be frightened or disconcerted.

Your marriage is probably the all-or-nothing type. It is a passionate and intensely close relationship, an agent for your couple's transformation, with you in the domineering role. It may also lead to disintegration before it starts afresh towards new horizons.

Your Isolated Planets

In general, the ten planets of the chart are connected to other planets by major or minor astrological aspects. It is owing to those ties that the planets' energies can manifest in the chart owner's personality and play out within safeguards according to a specific tonality.

It seldom happens that in a natal chart, a planet is totally disconnected from the nine other planets.

Astrologers have observed that when such a case occurs, the person feels the energy of the unaspected planet in quite a singular way, very jerky and powerful at the same time. Thus, for instance, the famed astrologer Jean-Baptiste Morin de Villefranche wrote that "an unaspected planet heralds that something strange or extraordinary will take place regarding the meanings of the house in which the said planet is posited" (source : l'astrologie selon Morin).

Rules for detecting an unaspected planet: among all the testimonies that we have reviewed to this day, based on our experience, we tend to agree with American astrologer Janis Huntley who accepts seven aspects, which involve the zodiacal twelve sections of 30 degrees. The aspects to be considered are the conjunction (0 degree, cooperation or tension), the semi-sextile (30 degrees), the sextile and the trine (60 and 120 degrees respectively, aspects of cooperation), the square and the opposition (90 and 180 degrees respectively, tensed aspects), and the quincunx (150 degrees, slightly tensed). In this detection, the chart's angles are not taken into account.

In any case, it is important to remember that an isolated planet clearly expresses its influence when it is a personal planet. Thus, when the Sun, the Moon, Mercury, Venus, or Mars is isolated, it is certain that the effects described by Jean-Baptiste Morin de Villefranche will become manifest. As for Jupiter, Saturn, Uranus, Neptune, and Pluto, one must be cautious because the volume of cases documented is not yet large enough.

Your chart has no isolated planet, and this particular case does not apply to you.

Annex 1: Your Minor Dominants

The five following dominants are less significant than those described at the beginning of your report. They may not be strongly felt. In some cases, they add several minor details to the analysis of your character, but they are rather for curiosity purposes. It is not necessary to take them into account when you first read your portrait.

Your Planetary Repartitions: Northern, Southern, Eastern and Western Hemispheres

The axis linking the 1st house's cuspid (the Ascendant) to the 7th house's cuspid - the Descendant - divides the zodiac into two bowls, a superior bowl, in the South, and an inferior bowl in the North. Quoting an expression by the famous American astrologer Rudhyar, the Southern part and the Northern part correspond to two functions: "being" and "doing". Other concepts are also associated with this North and South distribution, such as introversion - Northern hemisphere - and extraversion - Southern hemisphere - being or appearances, inner life or external life, reflection or action, dreaming one's life or living one's dreams, the abstract or the concrete, backstage or limelight.

This is not about determination but about personal inclination: thus, some people will be thrown into public life despite a prominent Northern hemisphere. If this happens, however, it will not be due to their will, their taste or their deep nature. Conversely, a prominent Southern hemisphere will not bring about a famous destiny to its owner, even if he tends to turn the spotlight on himself, or if he looks for a more active life. It is a matter of deep nature and natural inclination. Of course, none of the typologies is "superior" to another.

In your birth chart, Orlando Bloom, the ten main planets are distributed as follows:

Your Northern and Southern Hemispheres



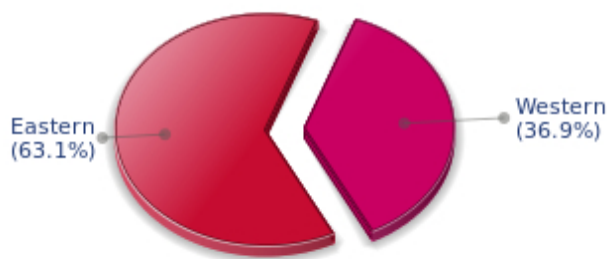
Orlando Bloom, the predominance of planets in the Southern hemisphere prompts you to take action, to draw attention on yourself, and to make your actions and what you have in mind visible to everyone. Sometimes, without giving a single thought to, and to the detriment of, a richer inner life and a deeper and wiser reflection. Action and communication are inevitable in your opinion, and you tend to think that the only thing that matters is what is seen! This is not always true, and it is up to you to progress through the development of inner qualities such as meditation, solitude and imagination so as to become stronger.

The birth chart is divided into two other parts, Eastern and Western, by the axis linking the Midheaven to the Imum Coeli.

The Eastern part, on the Ascendant side, shows the person's ego, will, magnetism, and vitality, whereas the Western part, on the Descendant side, symbolizes other people, communication, relationships and their influence, as well as flexibility and adaptability.

Orlando Bloom, here is the planetary repartition in your Eastern and your Western hemispheres:

Your Eastern and Western Hemisphere:



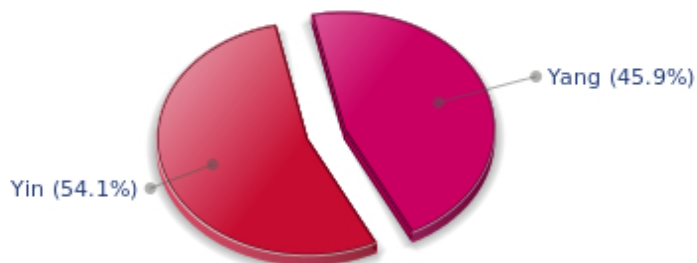
The predominance of planets in the Eastern hemisphere of your chart enables you, Orlando Bloom, to assert yourself and to rely on your determination: you know what you want and you have a tendency to take action and to decide with your personal goals as priorities, even if they can be in contradiction with what others think.

A definite asset... provided that you never make mistakes in your choices. You should pay more attention to your entourage in order to counterbalance your nature and to take advantage of your assets wisely. The danger is that you may be too authoritarian and not conciliating enough. Strong determination coupled with flexibility and acute sense of communication are qualities you should develop.

Your Yin and Yang Polarity

The twelve signs are divided into two polarities, called active or passive, or sometimes masculine and feminine, positive and negative, Yang and Yin. This classification corresponds to two quite distinct tonalities, the first one bringing extraversion, action, self-confidence and dynamism, the second one, introversion, reactivity, reflection and caution. None is superior to the other, each group has its own assets and shortcomings. Odd signs - Aries, Gemini, Leo, Libra, Sagittarius and Aquarius - belong to the first group, whereas even signs - Taurus, Cancer, Virgo, Scorpio, Capricorn and Pisces - belong to the second group.

Your Yin and Yang Polarity



According to the disposition and qualities of your planets and angles, you are rather influenced by Yin energy, the passive polarity, Orlando Bloom: you are quite introverted, imaginative and sometimes discreet, but you are a deep and wise person who is not content with just noisy and flashy things. At times, you doubt but you think that those who don't are a bit... thoughtless. Allow yourself to take more laid-back attitudes and put your reserve aside, because good equilibrium is always healthier.

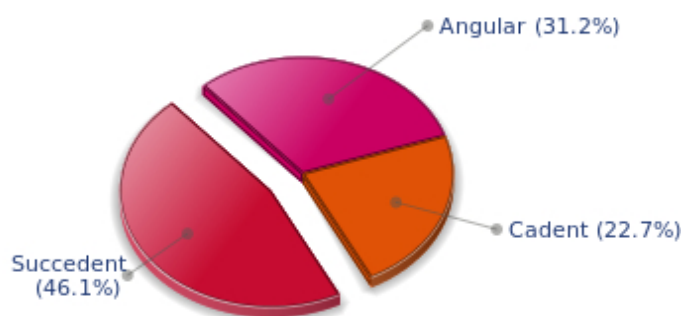
Your Houses' Accentuations

Houses are split up into three groups: angular, succedent and cadent.

The first ones are the most important ones, the most "noticeable" and energetic houses. They are the 1st, 4th, 7th and 10th houses. Their cusps correspond to four famous angles: Ascendant for the 1st house, Imum Coeli for the 4th house, Descendant, opposite the Ascendant, for the 7th house and Midheaven for the 10th house, opposite the Imum Coeli.

Planets are evaluated according to a whole set of criteria that includes comprehensive Western astrology rules. At their turn, planets emphasize specific types of houses, signs, repartitions etc., as previously explained.

Your Houses' Accentuations



The emphasis is on succedent houses in your chart, namely, the 2nd, 5th, 8th and 11th houses, Orlando Bloom: this configuration usually endows a personality with affective and sensitive qualities. Obviously, to the detriment of self-confidence or self-assertion, but your heart qualities may be very important. These houses also favour realization. Time and patience are part of their characteristics. However, they are only indications and you must include them in the rest of your chart in order to see whether they are validated or not!

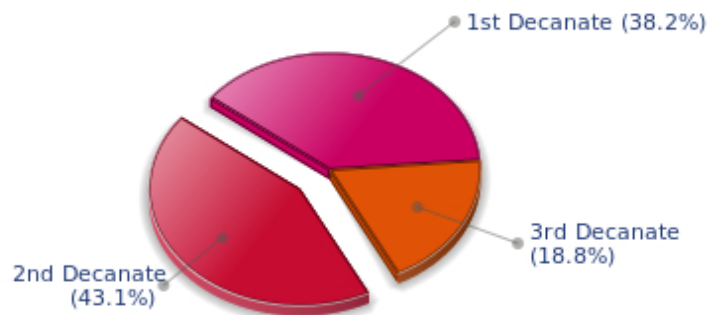
Your Esoteric Decanates

Each sign contains 30 degrees and can be divided into three equal parts: the decanates. The Tradition indicates that specific meanings can be associated to each of the three decanates. Their sphere of activity is usually limited to the Sun sign, however, it is even more interesting to observe the distribution of all the planets in the chart to get an idea of the respective importance of the three decanates, which can complement the description of the personality.

These meanings must be considered with the greatest caution. Indeed, they are minor characteristics that can only underline other outstanding traits of character.

Traditionally, the first decanate highlights the characteristics of the sign where a planet is located. The two other decanates correspond to sub-dominant planets, depending on the nature of each sign. This system leads to a multiplication of meanings and it is impossible to have a clear understanding: here, we prefer to give only the meaning of one decanate in comparison with the other two, within the birth chart as a whole. Again, the greatest caution is needed with regard to this minor indication as it is not always reliable: it is not essential that you read these texts in the beginning. You can get back to them later on, once you have read more important interpretations

Your Esoteric Decanates



The second decanate, which means the part between 10° and 20° of any zodiacal sign, prevails in your natal chart, Orlando Bloom: these 10 zodiacal degrees emphasize logical thought and mental values. Therefore, you may be drawn to some kind of scientific activities, research, writing or any sort of expression where you have to... think a lot.

Annex 2: Karmic Study

The karmic theme is a good complement to the psychological portrait, or natal chart. This analysis is based on the positions of the Lunar Nodes, the Black Moon and the Part of Fortune: they are also called fictitious points and describe the spiritual purpose of your destiny. Because there is in all of us an experience and a quest, our life is an evolutionary journey... provided that we head towards the right direction, of course! Indian astrologers highly prize the Nodes axis (North Node and South Node). It is the Ariadne's thread that we are invited to follow. The Black Moon indicates the sector where we are most likely to transform or to transcend, whereas the Part of Fortune points out the area where we can easily express our specificity.

The Lunar Nodes: a spiritual path

Lunar Nodes have their roots in the Indian tradition and they are based on a simple concept: each of us have a mission of their own, here on earth, a destiny, a course. According to the Indian philosophy, life is a school: the nodal axis describes our past experiences (South Node, our karma, our spiritual inheritance or our previous lives), and our aims on earth (North Node, our Dharma, the purpose of our current incarnation). This is the reason why the study of the lunar nodes is called "Karmic astrology". Here, we shall not step into hypothetical past lives. Wherever our current trends may come from, all that really matters is that we become aware of the purpose of our life, its finality and our dharma. We are likely to understand our life purpose around the age of 37, when the Lunar Nodes return to their natal position.

During the first part of your life, you manifested an acute sense of challenge, a taste for personal initiatives and an unflinching fighting spirit: these qualities prove helpful in handling any possible setback today. However, you must make an effort to accept your entourage and adopt more open and accommodating attitudes! Life teaches that you must become more sociable and develop the flexible behaviour that you lack. Do not play around with mavericks; It is important that you earn your close friends' affection and that you rely on their collaboration. You slowly become more aware of other people's reasons, of their desires and their concerns. Your destiny may be influenced by relationships. If you had a tendency to provoke people or events, now you have gained complementary qualities: diplomacy and human tact, cleverness in the art of reconciling opposite views. It is true that it required a huge personal effort!

Your life's purpose is related to your disregard for material goods and dispossession. Whether or not you enjoy comfort, a financial or affective capital, someday, you question your assets and you start anew. Of course, you enjoy life's simple joys. The security granted by stable relationships allows you to cope with possible delusions. But life undertakes to remind you that nothing is eternal here below, the wheel keeps on turning and, at any time, one may irrevocably lose what one thought to possess forever. Paradoxically, ordeals and losses make you stronger: as time goes by, you feel freer, more detached from the values of this world and closer to the essential... The spiritual life can't be bothered with the prosperity sought after by ordinary mortals. As you give up the values that you once thought to be indispensable, you gain in terms of lucidity and, eventually, in terms of tranquillity. Your powers and your inner dimension will then impress many people: do not overdo it!

Lilith or the Dark Moon

The Black Moon is the spark of refusal and distance that is dormant in all of us. Depending on the sign where she is found in your chart, she highlights the desire to transform and to sublimate a part of your life. The Black Moon is unfathomable and mysterious. She gives a different dimension to the sector she

touches. Her manifestations are subtle; nonetheless, she is powerful, implacable, demanding to the extreme... The Black Moon is also called Lilith. She is the inner flame of your heroism and insubordination.

Twin relations (those that include your fellow creature, your double) are an object of fascination. You are in quest of your soul mate, your identical being rather than your complement... This attitude brings about exaltations and setbacks: you think that you recognize that special one who really resembles you? Differences, however, grow more painfully as time unfolds. But your search of an absolute relation may also become the cement of a close and privileged couple, impervious to life vagaries.

You pay special attention to your familiar and intimate realm: an importance and a demand, too. You are in search of a setting into which you can totally merge. You do not appreciate half-measures in the family: you want the perfect osmosis or nothing at all! In the long run, this will melt your attitudes into your entourage's may become the cornerstone for a near-to ideal union. However, the danger is that you may shut out solicitations, inevitably disturbing, which are not from your clan.

The Part of Fortune in House

The Part of Fortune is a very ancient fictitious point that depends on the lunar phase at the time of birth. The astrological house tenanted is particularly strengthened. In your chart, the Part of Fortune is in the 9th house: you live for adventures and you want to go beyond the limits of your abilities with a view to discover new schools of thought. The key to your motivations is travel under all its forms, geographical, spiritual or inner exploration. You need to broaden your field of consciousness, which can be too ambitious a word to describe simple experiences: the taste for foreign or strange cultures, accepting and understanding differences.

Retrograde Planets

The karmic tradition insists on the issues related to the so-called retrograde planets. They are considered to be the inheritance of a past that was not well experienced, a sort of unfinished business. The interpretations of the retrogradation may seem negative or excessive to you. However, you may relate to a scenario that you have often and repeatedly experienced... as if you underwent several setbacks that all have the same cause. Until the day you become aware of it and you can free yourself from it! Through the slow integration of these planetary energies, you will be able to overcome your difficulties and to pay your karmic debt. Actually, each retrograde planet highlights an opportunity for evolution. Nothing can be achieved without the will to grow spiritually and to defeat your own demons.

The planet Mercury was retrograde on the day of your birth. You probably have to make an effort to harmonize your relations: you are prone to screen others with a critical eye and you do not overlook the slightest flaw. You are exceedingly clear-sighted and you approach your contemporaries with distance rather than with natural. This type of behaviour may be an asset: your enquiring and picky mind prevents you from being too gullible. However, your reservations may impede your communication. As time goes by, you learn to establish contacts more spontaneously. During your childhood, you faced problems of expression in your heart of hearts: your doubts prompted you to project an image that was out of touch with the reality... turbulent or withdrawn, you could hardly establish conventional ties. As an adult, you are in a better control of these elements. You still have to find the right way to tell who you really are: this is how you can improve your relationships.

With Jupiter retrograding on the day of your birth, the lesson is about grasping the opportunities that are

offered to all of us but that some people take advantage of, while others don't. Persons who quickly adjust to circumstances are more likely to achieve their ambitions than those who need to be encouraged to take action. During your childhood, you may not have efficiently responded to life's concrete enticements, leaving other "luckier" people to achieve what you were dreaming of. You preferred to enjoy yourself, here and now, rather than to look for new paths of development or exploration. It is possible that you were not optimistic enough. Enterprising minds were alien to you... Later, you find out that, indeed, you give little importance to the credit of the frenzied expansion praised by the modern world. Your path is not oriented towards personal prestige. With subtlety, you integrate non-material values and you accept well the fact that you missed past opportunities.

The karma associated with Saturn may border on self-censorship: during your childhood, particularly, you were doubtful of your abilities and your talents. You had a propensity to put yourself in a no-win situation and to under-estimate yourself. Obstacles abound: taboos and prohibitions of all kind slow down your evolution. Little by little, you learn to re-evaluate your possibilities and to gain more self-confidence. Your personal rigour then turns out to be constructive: you are not destabilized by life ordeals and you practice a self-discipline that favours steady evolution. Although your path may be steep, it is nonetheless safe.

N.B: modern astrology attaches less and less importance to the principles of retrograding planets.

Conclusion

A few remarks are needed here in order to allow you to fully take advantage of your astrological portrait: firstly, do not forget that a birth chart is also a photograph of the sky at birth and a structure that not only contains the personality's characteristics, but also its potential evolution.

We all know that, in real life, people begin to know themselves when they are in their forties, or even later. Likewise, several traits of character in a portrait may seem surprising: in most cases, it means that such features are not yet developed.

Some personalities reveal themselves late in life, whereas others are more precocious. It must be remembered that psychological structures are in a state of continuous evolution because they are influenced by unfolding events and gradual maturity. We can never underline strongly enough the "mobile" nature of the personality, throughout a lifetime.

On the other hand, it is difficult to discriminate what is "already present" at this moment in your life when you are reading your chart's interpretation, from what will appear later in the logic of your evolution: you must sort out all the pieces of information provided and, in most cases, you will see that your astrological portrait is helpful for your endeavours to know yourself better.

Finally, several readings of an astrological portrait are usually necessary in order to absorb all its different meanings and to evaluate the relevance of each character trait.

In any case, better self-knowledge obviously contributes to faster personal blossoming, and it is undoubtedly one of astrology's major roles: contributing to know oneself better, in order to improve more rapidly, to deal with one's weaknesses and to avoid its drawbacks, and to take advantage of one's assets as efficiently as possible.
