

**Morgan Freeman's  
Astrological Portrait**





## Morgan Freeman's Astrological Portrait



<b>Introduction</b>	<b>2</b>
<b>Your Planets, Houses, Aspects, and Natal Chart</b>	<b>4</b>
<b>Preamble</b>	<b>6</b>
<b>Your Planetary Repartitions</b>	<b>7</b>
<b>Your Dominant Modes and Elements</b>	<b>8</b>
<b>Your Dominants: Planets, Signs and Houses</b>	<b>9</b>
<b>Your Style, Behaviour, and Peculiarities</b>	<b>14</b>
<b>Your Sensitivity</b>	<b>17</b>
<b>Your Affectivity</b>	<b>18</b>
<b>The Way You Take Action and Your Sexuality</b>	<b>19</b>
<b>Your Intellect and Your Communication Style</b>	<b>20</b>
<b>Your Goals, Motivations, Career, and Destiny</b>	<b>21</b>
<b>Your Assets and Your Part of Joviality</b>	<b>24</b>
<b>Your Serious Side</b>	<b>25</b>
<b>A Few Special Points</b>	<b>25</b>
<b>Your Isolated Planets</b>	<b>26</b>
<b>Annex 1: Your Minor Dominants</b>	<b>28</b>
<b>Annex 2: Karmic Study</b>	<b>32</b>
<b>Conclusion</b>	<b>35</b>



# Morgan Freeman's Astrological Portrait

## Introduction

To fully benefit from this portrait, we suggest that you read its introduction and its preamble carefully, and then that to take the time to soak up the interpretations of each chapter. Given the large number of texts, which mirrors the human being's complexity, you may need to go through the contents several times, so as to get a good grasp of their meaning and to know yourself better. This will reward your patience.

The purpose of this report is to describe your psychological portrait and to highlight the most fundamental features on the personal area. The report begins with the analysis of your planetary dominants and outlines your personality's general traits before going into further detail. Minor dominants are analysed at the end of Annex 1, for purposes of clarity. Your report then delineates the various facets of your personality:

In general, even when relationships are not involved, we express ourselves and we feel according to our character and our personal motivations: this is indicated by the Ascendant and the Sun sign which both give details on the way we function. They shed a tremendously important light which allows to figure out your personality. Here, we describe your Sun sign (your inner self), your Ascendant (your behaviour as seen by others), and the ruler of the Ascendant (interesting additional pieces of information about the style of your personality). These descriptions alone cover nearly a third or a half of your psychological signature, depending on your natal chart characteristics.

Then, we address your sensitivity, or in other words, the way you receive things and how you express your emotions ; it works as a constant filter for all your exchanges, even when it becomes a more secondary element in your amorous relationship, because at that moment, affectivity prevails. Sensitivity is the way you perceive things, it is your radar, your daily mood, and at the same time, it indicates how you react to your entourage, on a daily basis. It is what others immediately see of you. In the second paragraph, we explain in which areas of life your sensitivity and your emotions are strongest, therefore, where you are most vulnerable.

After this, it is your affectivity, the way you love and how you charm, that comes into play as soon as you fall in love: the first part indicates its basic structure or its main form. The second part describes the areas where it is best expressed and how you display it, according to your personality.

A third fundamental area deals with your mode of action and your sexuality: how you behave, how you manage to obtain what you want, what kind of desires you have. There are twelve possibilities, very

different from one another. The study discloses the specific one that applies to you. In the second paragraph, we explain in which life areas you may most efficiently take advantage of your capacity for action and for conquest.

Your ways of communicating and of thinking are obviously among the major elements that must be integrated into the delineation and the description of your personality. Indeed, they influence your general behaviour and may modify or enhance the image your project (for instance, extraversion may “compensate” a weak affectivity, but a huge number of cases are possible). An additional chapter indicates the favourite areas where you enjoy communicating, thinking and meeting with people.

Besides, we analyze an even more personal aspect that is important to define and understand what may occur within your couple: each of us have a centre of interest, a privileged manner to be fulfilled or to achieve our destiny; this main motivation is indicated by the positions of your Sun and your chart ruler in the astrological houses and we provide you with its detailed description.

A natal chart contains the potential for specific fulfilment and a whole range of assets, protections and qualities. How does the lucky factor manifest in your personality? In which area can you best exploit your qualities? The answers are precisely revealed to you in this chapter.

On the other hand, we all feel in us a part of vulnerability, doubts and fears. How does this part of solemnity or serious side play out? How is it possible to handle it in order to evolve and to get rid of useless elements? All this information is provided to you in these two paragraphs.

Then, you can discover three additional traits of your personality that must be considered as secondary ones. They deal with your predispositions, which means that they need to be triggered by external events because they are not influenced by your will; let's call it a part of fate. Please, bear in mind that your destiny can unfold only in accordance with what you are: therefore, even if they belong to your more unconscious self, these characteristics are parts of you, definitely.

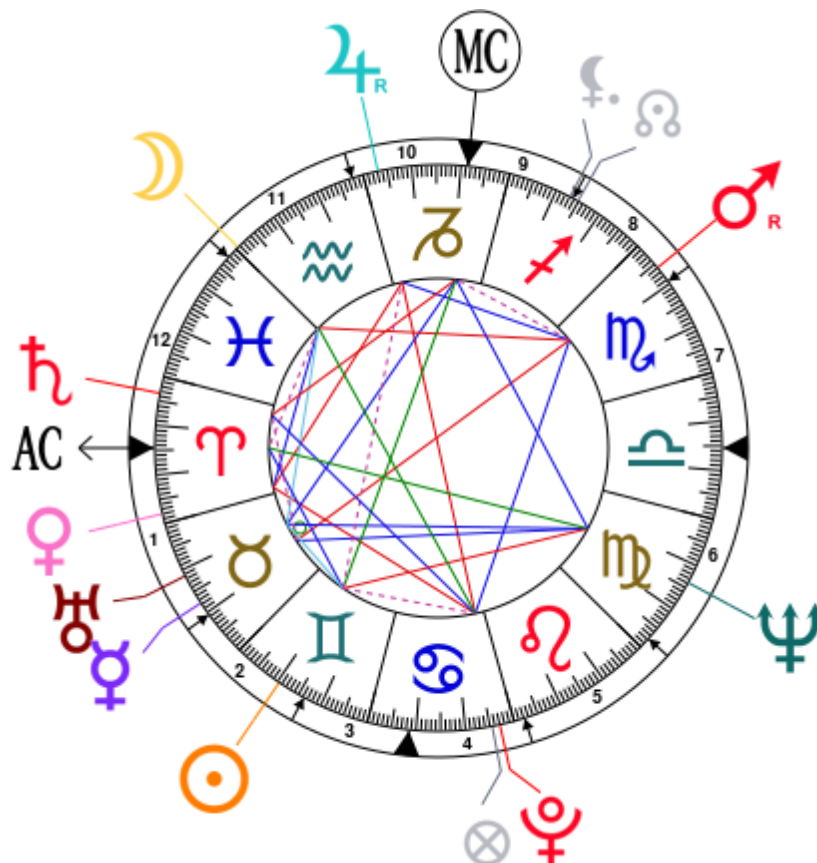
The karmic chart complements the psychological portrait or natal chart. It is based on the positions of the Lunar Nodes, the Black Moon, and the Part of Fortune. These elements of the chart, sometimes referred to as fictitious points, provide information about the spiritual meaning of your destiny. Owing to the fact that we all have in us acquired knowledge and the urge to go on a quest, our life is an evolutionary journey... However, these texts must be read with great caution: this is the reason why you will find this analysis in the Annex 2 of your report.

# Your Planets, Houses, Aspects, and Natal Chart

Morgan Freeman, born June 1, 1937, at 02:00 AM, Memphis (Shelby), Tennessee [90.02W ; 35.08N ; 6W00]

Natal Planets				In House	Natal Houses (Placidus)		
☉ Sun	10°24'	♊ Gemini		House 2	House 1	14°33'	♈ Aries
☾ Moon	29°29'	♒ Aquarius		House 11	House 2	20°32'	♉ Taurus
☿ Mercury	17°42'	♉ Taurus		House 1	House 3	16°15'	♊ Gemini
♀ Venus	27°59'	♈ Aries		House 1	House 4	8°35'	♋ Cancer
♂ Mars	24°02' R	♏ Scorpio		House 8	House 5	2°13'	♌ Leo
♃ Jupiter	26°53' R	♐ Capricorn		House 10	House 6	2°17'	♍ Virgo
♄ Saturn	3°25'	♈ Aries		House 12	House 7	14°33'	♎ Libra
♅ Uranus	11°22'	♉ Taurus		House 1	House 8	20°32'	♏ Scorpio
♆ Neptune	16°11'	♍ Virgo		House 6	House 9	16°15'	♐ Sagittarius
♇ Pluto	27°03'	♋ Cancer		House 4	House 10	8°35'	♐ Capricorn
♁ Node	15°07'	♐ Sagittarius		House 8	House 11	2°13'	♒ Aquarius
♁ Lilith	16°55'	♐ Sagittarius		House 9	House 12	2°17'	♓ Pisces
AS AS	14°33'	♈ Aries					
MC MC	8°35'	♐ Capricorn					

In keeping with the common practice, we consider that a planet posited within 1 degree of the next house belongs to that house. We allow an orb of 2 degrees for the ASC and the MC.



## List of Your Active Planetary Aspects

Please find below the list of all the active inter-aspects which are interpreted in this report, in addition to your planets in sign, in house, and all your planetary dominants. Since the aspects between slow-moving planets are of a collective nature, they are not displayed, in compliance with our interpretation rules.

- ★☆☆☆☆ Sun sesqui-quadrate Jupiter, orb -1° 28'
- ☆☆☆☆☆ Sun semi-sextile Uranus, orb -0° 58'
- ★☆☆☆☆ Sun square Neptune, orb 5° 47'
- ☆☆☆☆☆ Sun semi-square Pluto, orb 1° 39'
- ☆☆☆☆☆ Sun sextile Ascendant, orb -4° 09'
- ☆☆☆☆☆ Sun inconjunction Midheaven, orb 1° 48'
- ☆☆☆☆☆ Moon sextile Venus, orb -1° 29'
- ★☆☆☆☆ Moon square Mars, orb 5° 26'
- ☆☆☆☆☆ Moon quintile Uranus, orb -0° 06'
- ☆☆☆☆☆ Moon inconjunction Pluto, orb -2° 25'
- ★☆☆☆☆ Moon semi-square Ascendant, orb 0° 04'
- ★☆☆☆☆ Mercury opposite Mars, orb -6° 19'
- ★☆☆☆☆ Mercury semi-square Saturn, orb -0° 42'
- ☆☆☆☆☆ Mercury conjunction Uranus, orb 6° 2'
- ☆☆☆☆☆ Mercury trine Neptune, orb -1° 31'
- ★☆☆☆☆ Venus square Jupiter, orb 1° 06'
- ★☆☆☆☆ Venus square Pluto, orb -0° 55'
- ☆☆☆☆☆ Mars sextile Jupiter, orb 2° 5'
- ☆☆☆☆☆ Mars trine Pluto, orb -3° 01'
- ★☆☆☆☆ Mars semi-square Midheaven, orb -0° 26'
- ★☆☆☆☆ Saturn square Midheaven, orb -5° 09'
- ☆☆☆☆☆ Uranus trine Midheaven, orb 2° 46'
- ★☆☆☆☆ Neptune inconjunction Ascendant, orb 1° 37'
- ☆☆☆☆☆ Neptune trine Midheaven, orb -7° 35'

## Meaning of Stars

Stars indicate the strength of the aspects. Two solid coloured stars (there are half-stars also), mean that the aspect is powerful enough to be noticed at the first reading.

We strongly advise that you read the paragraphs displaying less than two stars later on, after you have absorbed the full import of the other texts.

The yellow colour indicates a soothing and conciliating aspect, and the red colour, a dynamic and tense aspect. The red aspects enable you to evolve, to take action, and to learn to turn your "weaknesses" into assets through your life experiences. The yellow aspects are innate strengths on which you rely in order to grow better with the former...

## Preamble

When interpreting a natal chart, the best method is to start gradually from general features to specific ones. Thus, there is usually a plan to be followed, from the overall analysis of the chart and its structure, to the description of its different character traits.

In the first part, an overall analysis of the chart enables us to figure out the personality's main features and to emphasize several points that are confirmed or not in the detailed analysis: in any case, those general traits are taken into account. Human personality is an infinitely intricate entity and describing it is a complex task. Claiming to rapidly summarize it is illusory, although it does not mean that it is an impossible challenge. It is essential to read a natal chart several times in order to absorb all its different meanings and to grasp all this complexity. But the exercise is worthwhile.

In brief, a natal chart is composed of ten planets: two luminaries, the Sun and the Moon, three fast-moving or individual planets, Mercury, Venus and Mars, two slow-moving planets, Jupiter and Saturn, and three very slow-moving planets, Uranus, Neptune and Pluto. Additional secondary elements are: the Lunar Nodes, the Dark Moon or Lilith, Chiron and other minor objects. They are all posited on the Zodiac wheel consisting of twelve signs, from Aries to Pisces, and divided into twelve astrological houses.

The first step is to evaluate the importance of each planet. This is what we call identifying the dominant planets. This process obeys rules that depend on the astrologer's sensitivity and experience but it also has precise and steady bases: thus, we can take into account the parameters of a planet's activity (the number of active aspects a planet forms, the importance of each aspect according to its nature and its exactness), angularity parameters; (proximity to the four angles, Ascendant, Midheaven, Descendant and Imum Coeli or Nadir, all of them being evaluated numerically, according to the kind of angle and the planet-angle distance) and quality parameters (rulership, exaltation, exile and fall). Finally, other criteria such as the rulership of the Ascendant and the Midheaven etc. are important.

These different criteria allow a planet to be highlighted and lead to useful conclusions when interpreting the chart.

The overall chart analysis begins with the observation of three sorts of planetary distributions in the chart: Eastern or Western hemisphere, Northern or Southern hemisphere, and quadrants (North-eastern, North-western, South-eastern and South-western). These three distributions give a general tone in terms of introversion and extraversion, willpower, sociability, and behavioural predispositions.

Then, there are three additional distributions: elements (called triplicity since there are three groups of signs for each one) - Fire, Air, Earth and Water - corresponding to a character typology, modality (or quadruplicity with four groups of signs for each one) - Cardinal, Fixed and Mutable - and polarity (Yin and Yang).

There are three types of dominants: dominant planets, dominant signs and dominant houses. The novice thinks astrology means only "to be Aries" or sometimes, for example, "to be Aries Ascendant Virgo". It is actually far more complex. Although the Sun and the Ascendant alone may reveal a large part of the character - approximately a third or a half of your psychological signature, a person is neither "just the Sun" (called the sign) nor just "the first house" (the Ascendant). Thus, a particular planet's influence

may be significantly increased; a particular sign or house may contain a group of planets that will bring nuances and sometimes weaken the role of the Ascendant, of the Sun sign etc.

Lastly, there are two other criteria: accentuations (angular, succedent and cadent) which are a classification of astrological houses and types of decanates that are occupied (each sign is divided into three decanates of ten degrees each). They provide some additional informations.

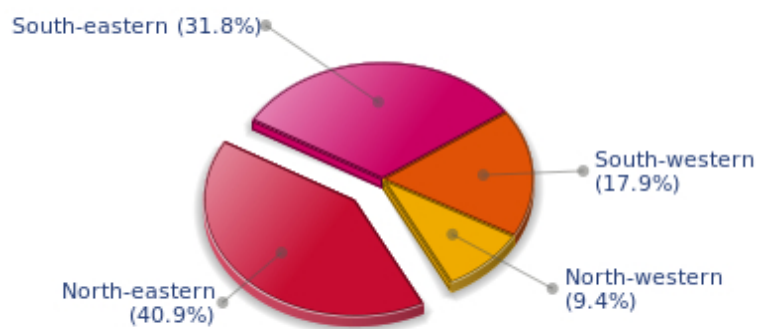
These general character traits must not be taken literally; they are, somehow, preparing for the chart reading. They allow to understand the second part of the analysis, which is more detailed and precise. It focuses on every area of the personality and provides a synthesis of all the above-mentioned parameters according to sound hierarchical rules.

As explained in the introduction of your Psychological Portrait report, minor dominants are analysed at the end of Annex 1, for purposes of clarity.

## Your Planetary Repartitions

Each quadrant is a combination of the four hemispheres of your birth chart and relates to a character typology. The Southern hemisphere – the top of your chart, around the Midheaven – is associated with extraversion, action, and public life, whereas the Northern hemisphere prompts to introversion, reflexion, and private life. The Eastern hemisphere – the left part, around the Ascendant – is linked to your ego and your willpower, whereas the Western hemisphere indicates how other people influence you, and how flexible you are when you make a decision.

### Your Four Quadrants



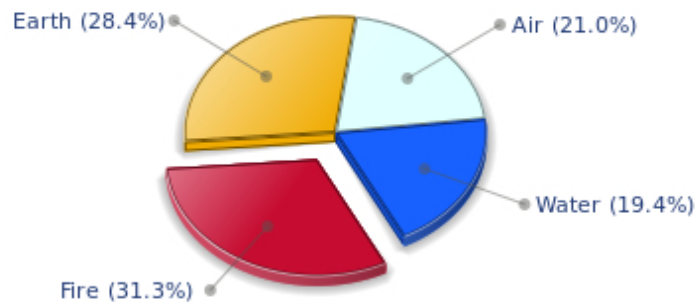
Morgan Freeman, the nocturnal North-eastern quadrant, consisting of the 1st, 2nd and 3rd houses, prevails in your chart: this sector favours self-assertion and material security to the detriment of your perception of others. You consider self-transformation to be a hazardous adventure. You are inclined to seek stability and you tend to protect yourself with your actions. Possession, acquisition but also communication, without opening up too much, are part of your deep motivations. You are rather autonomous and constant, however it is important that you pay more attention to others, so that you can improve your outcomes.



## Your Dominant Modes and Elements

Morgan Freeman, here are the graphs of your Elements and Modes, based on planets' position and angles in the twelve signs:

### Your Four Elements

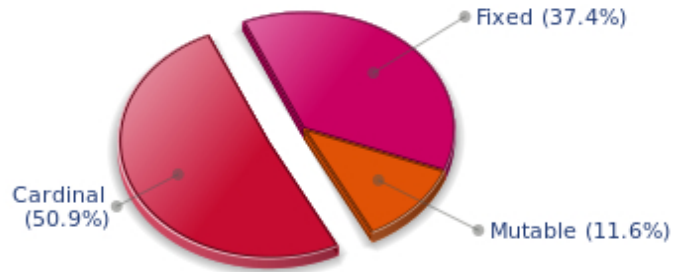


Morgan Freeman, Fire is dominant in your natal chart and endows you with intuition, energy, courage, self-confidence, and enthusiasm! You are inclined to be passionate, you assert your willpower, you move forward, and come hell or high water, you achieve your dreams and your goals. The relative weakness of this element is the difficulty to step back or a kind of boldness that may prompt you to do foolish things.

Like the majority of Earth signs, Morgan Freeman, you are efficient, concrete and not too emotional. What matters to you is what you see: you judge the tree by its fruits. Your ideas keep changing, words disappear, but actions and their consequences are visible and remain. Express your sensitivity, even if it means revealing your vulnerability. Emotions, energy and communication must not be neglected; concrete action is meaningless if it is not justified by your heart, your intellect or your enthusiasm.

The twelve zodiacal signs are split up into three groups or modes, called quadruplicities, a learned word meaning only that these three groups include four signs. The Cardinal, Fixed and Mutable modes are more or less represented in your natal chart, depending on planets' positions and importance, and on angles in the twelve signs.

## Your Modes



Morgan Freeman, the Cardinal mode is dominant here and indicates a predisposition to action, and more exactly, to impulsion and to undertake: you are very keen to implement the plans you have in mind, to get things going and to create them. This is the most important aspect that inspires enthusiasm and adrenalin in you, without which you can grow weary rapidly. You are individualistic (maybe too much?) and assertive. You let others strengthen and improve the constructions which you built with fervour.

## Your Dominants: Planets, Signs and Houses

The issue of dominant planets has existed since the mists of time in astrology: how nice it would be if a person could be described with a few words and one or several planets that would represent their character, without having to analyse such elements as rulerships, angularities, houses, etc!

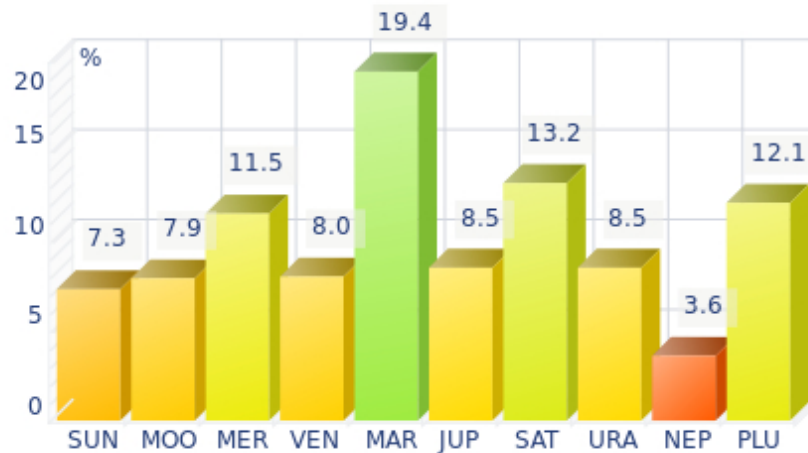
The ten planets - the Sun throughout Pluto - are a bit like ten characters in a role-play, each one has its own personality, its own way of acting, its own strengths and weaknesses. They actually represent a classification into ten distinct personalities, and astrologers have always tried to associate one or several dominant planets to a natal chart as well as dominant signs and houses.

Indeed, it is quite the same situation with signs and houses. If planets symbolize characters, signs represent hues - the mental, emotional and physical structures of an individual. The sign in which a planet is posited is like a character whose features are modified according to the place where he lives. In a chart, there are usually one, two or three highlighted signs that allow to rapidly describe its owner.

Regarding astrological houses, the principle is even simpler: the twelve houses correspond to twelve fields of life, and planets tenanted any given house increase that house's importance and highlight all relevant life departments: it may be marriage, work, friendship etc.

Morgan Freeman, here is the evaluation diagramme for your planets:

## Your Dominant Planets



The three planets that are most highlighted in your chart are Mars, Saturn and Pluto.

Mars is one of your dominant planets and provides you with its efficient energy and enthusiasm: with a powerful Mars in your chart, action - but also will and ability to undertake - is not an empty word for you. You are active, dynamic, willing to fight, courageous, and you are never afraid to move mountains, even though risks are part of the adventures that you start with determination.

However, your patience is not always up to your boldness and a kind of feverishness, or even anger, can tarnish the quality of your achievements. That would be a pity since the Marsian is a champion in matters of efficiency! Mars symbolizes display of action, conquering spirit that favours discipline and order - beware of not being fussy - and lies at the frontier between action and brutality, between conquest and potential aggressiveness.

Saturn is part of your dominant planets: among the facets of your character, you have a grave and serious side, wise and somewhat severe, since your concentration can be powerful, to the detriment of carelessness and friendliness.

You often look austere, but it is only an appearance, a kind of modesty or reserve; however, it is true that the Saturnian, who is fond of time, effort, asceticism, rigour and sobriety, may have popularity issues. Nevertheless, honesty and straightforwardness, reliability, as well as slow, wise and deep mental process, although not very popular and visible qualities, eventually become noticed and appreciated. Saturnians' second part of life is usually easier and more fulfilling.

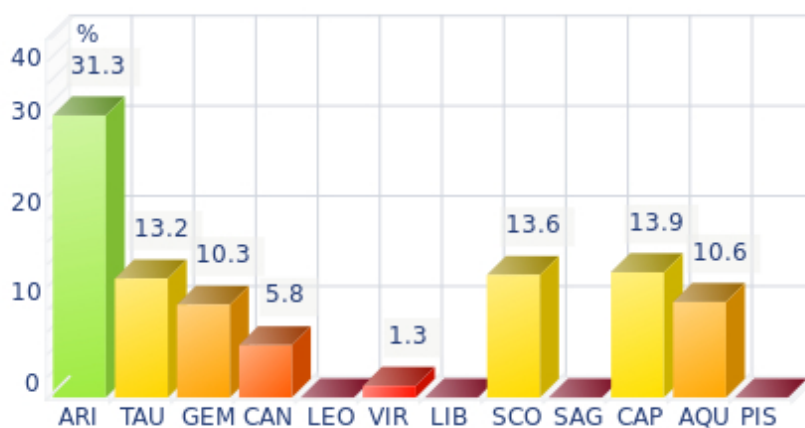
Like the Jupiterian, your Saturnian facet prompts you to seek the essential, security, and longevity. However, the difference with the former is that you will never give priority to wealth or "the bigger, the better" philosophy for the sake of power. Saturn, like Jupiter, symbolizes social integration, and it is usually considered positive to have a harmonic Jupiter and Saturn in one's chart because of their social adaptation capacities.

Your vulnerability lies in your too serious and austere side, which may lead to unwanted loneliness and affective frustration. This generally does not last because Saturnians often hide deep down a golden heart that ends up revealing itself...

With Pluto as a dominant planet in your chart, you are a magnetic and mighty predator, like the Scorpio sign ruled by this planet, who needs to exert pressure on others in order to "test" them. You are always ready to evolve, to risk destruction for reconstruction - including your own - to live more intensely whilst imposing your secret authority on things and on people you encounter.

You may come across as wicked, cruel or too authoritarian, but actually you only follow your instinct, you sound people out, and you like to exert your domination simply because your vital energy is too powerful to remain inside. You are inclined to be passionate, with hidden motivations. You are sometimes misunderstood but one of your great Plutonian assets is to go successfully through each life ordeal with ever growing strength.

### Your Dominant Signs



In your natal chart, the three most important signs, delineated according to the above-mentioned criteria, are, in decreasing order of strength, Aries, Capricorn and Scorpio. They are often prominent because your Ascendant and your Sun are posited there. However, it is not always the case: it may be because they are occupied by a cluster of planets, by a planet near an angle other than the Midheaven and the Ascendant, or because two or three planets are very active and form numerous aspects from these signs. Therefore, you partly take on the three signs' characteristics, which are somehow superimposed on your natal chart, and all the more so if any of the signs in question is highlighted.

Arian blood runs through your veins! You have that enthusiasm, frankness, courage, and fastness which usually make you so likeable in spite of your somewhat rough, naive, or violent side. As a bonus, Aries' gushing fire always gives you the impetus to make a fresh start, should you stumble or undergo life hardship!

Capricorn is one of your dominant signs and endows you with a grave and serious style that seems to stick to you constantly. But if you have that reserved and cold side - as some extrovert people may think - on the other hand, you possess sturdy qualities: you are strong-willed and tough. Your long-term vision, your sense of duty, and your ambition are not affected by the derisory and erratic motions that seem to upset most mortals less steady than you. Besides, you are like a good wine, you age well and your natural solemnity or serious side paradoxically turns into an almost cheerful appearance, as you grow older. You are actually very sensitive when it comes to love. Faithful, caring, sweet, and sensitive, your behaviour is very different in your everyday, sentimental life. A golden heart beats under your tough and austere appearance...

With Scorpio as a dominant sign, you are a strong and astute person, complicated and passionate, sometimes destructive and intolerant, but strong-willed, tough and daring, sometimes bordering on aggressive. So many qualities and dangers combined in one person! Obviously, this often results in a natural selection of people around you: those who stand up to you or admire you and those who can't bear you anymore! But that is precisely what you want. You are what you are and you are not going to transform yourself just to please. You are too proud and you never dread confrontations, although your way of fighting is secret, like your nature that, mysteriously enough, you are so reluctant to reveal even to your close friends who will never understand you. That said... what a hellish charm you have!

### Your Dominant Houses



Houses 1, 8 and 11 are the most tenanted ones in your natal chart. To compute their strength, planets and angles are weighed according to various astrological criteria such as swiftness, activity, angularity, rulership etc. From the analysis of the most tenanted Houses, the Astrologer deduces the fields of activity that are most relevant to you, be it because of what you are experiencing, or what you may experience in the future, or because of your deep inner motivations.

With a dominant 1st house, your magnetism is powerful, and your individuality as well as your willpower are out of the ordinary. You are a determined, strong-willed, and assertive person, with this relative criterion at least.

It is likely that you never go unnoticed when you are in a crowd or a in reunion: an important 1st house suggests that you are a charismatic person with above average vital energy, especially if the Sun is present in this sector.

Your personal interests are always important and you never forget them, which doesn't mean that you are self-centered, but only that you behave according to what is in harmony with your deep nature!

Your 8th house is very highlighted: it is the most complex house of the Zodiac. It symbolizes above all passion and transformation, which often go hand in hand. Indeed, you have a tendency to experience everything to the bitter end, and you overstep propriety borders because you want to understand everything, even what is... forbidden. This house relates to complex spheres such as sexuality, possessions and dispossessions that don't depend on you (inheritances, donations, sudden financial losses), death too - not yours in particular, so, don't worry! - and understanding of hidden or occult things: here are the fields that affect you generally, because you are naturally interested in them or

because life gets you involved in spite of yourself.

The 11th house is among your dominant houses. Therefore, social life and friendships are very important, even strategic to you.

You think that group activities, whether in the humanitarian field or simple gatherings of friends, are endless sources of inspiration and of enjoyment, provided that there are no tensed aspects in this sector. Everything human is important to you, often more important than your own success, unless your 10th house is also powerful.

## Your Style, Behaviour, and Peculiarities

What is commonly known as "sign" indicates the position of the Sun in the Zodiac. The Sun highlights all the characteristics of the sign he tenants. According to astrology traditional rules, these characteristics are all the more pure and exact when the Sun is strong in the sign, or when the sign is particularly highlighted within the chart. Here, we indicate the pure characteristics of the sign but you must bear in mind that they may only shed a light on a particular aspect of your personality. Indeed, the sole sign of the Sun, or of the Ascendant, can never describe an astrological chart because it depends on the degree of strength of the said sign in your chart.

Another important point must be underlined. Contrary to the Ascendant, which clearly describes your appearance, your vitality, your physical constitution, your spontaneous behaviour and the image you project, your Sun sign describes your inner self, which you may not completely be aware of, and which may emerge gradually as you mature: it is about your inner personality that you reveal only to the members of your entourage whom you trust. The Sun sign is likely to be the final form of your personality, once it has evolved in line with the energies of the other parts of your chart, the beginning of which is seen in the Ascendant, your external "bark".

The Ascendant is one of the major components of your natal chart. It is the zodiacal sign that rises in the East at the very moment of your birth. To calculate it, it is therefore necessary to know your exact time of birth.

It provides with a wealth of information on your personality. It is one of the key features that allows the analysis of several parts of you, such as your appearance, your character as it is initially perceived and your immediate behaviour. It describes the external aspect of your personality which you always display, but it also describes your physical constitution in the long-term, in other words, your health.

Please be aware that, in spite of the importance of the Ascendant, the accuracy of its description depends on how strongly highlighted it is in your natal chart. We use the entire set of astrological rules to assess the strength of the Ascendant. In most cases, the Ascendant is as revealing as your "sign", i.e., the sign where the Sun is posited at the time of birth.

## You were born under the sign of Gemini and your Ascendant is in Aries

Before broaching the details of the meaning of your Sun and your Ascendant, as a preamble, we offer a brief generic interpretation of their combination in your chart:

What liveliness and energy! With your Aries Ascendant, you usually assert your individuality with boldness and without shams. When you meet people for the first time, you probably give the feeling that you live in the present instant and that you are prompted by unfailing spontaneity. Your inner self is defined by Gemini, a sign which shares with Aries the same fondness for unforeseen things and the same desire to discover people and the world. When people get to know you better, they immediately notice the swiftness which is the typical feature of both signs, and also a lighter and more mobile touch which is so characteristic of Gemini. You are curious, a bit scattered with your numerous centres of interest, and you blossom amid the contacts you establish in all directions. You cannot be happy if you have no intellectual food to ponder over. Be careful not to fall into superficiality because constancy and patience

are not the assets of these two signs.

### **You were born with the Sun in Gemini**

Your mobility is such that you are in every place where you are not expected. You spend lots of time asking questions and... answering them. Your curiosity and your quick-wittedness are insatiable. Your mind is in constant turmoil, hopping from one topic to another, solving problems, accumulating anecdotes and knowledge within a short range of time. Your mobility is mostly mental, it takes you afar and turns your daily life into a mosaic of intense and pleasant moments that are not necessarily related to one another...

As you are born under this sign, you are nervous, expressive, lively and adaptable, with a quick mind and a good sense of humour. You are bubbling, playful, sociable, clever, curious, whimsical, independent, intellectual, flexible, ingenious, fanciful, imaginative, charming, cerebral, and you are into everything. You may also be whimsical, unfocused, quirky, superficial, indiscreet, opportunist, unmindful, selfish, sarcastic or mercurial.

in love, Sir, you increase the number of your love affairs, probably because you do not want to give up your freedom too quickly. You are cerebral to the extent that games of seduction remain... a real game, where feelings and carnal pleasures are merely present.

Paradoxically, you are very charming and attractive but you are more interested in the game itself. Indeed, thrills of verbal joust, fun, the pleasure to communicate over and over again, remain the centres of your concerns.

You clearly prefer to be a bachelor because you appreciate its hustle and bustle: outings, exciting parties or a wide range of encounters etc. However, when you meet with your soul mate, you turn into a pleasant and charming partner, although you may not be around too often!

### **Your Ascendant is in Aries**

Your natural energy is cut-and-dried. It may prompt you to take the driver's seat wherever you are. Were it not for the strange feeling of sympathy you arouse, you would seem to be arrogant. Charging ahead is not devoid of drawbacks. Your courage and your restlessness may hurt you and cause you to doubt, all of a sudden. As a consequence, your courage, your honesty, your enthusiasm and your straightforwardness may turn into aggressiveness, rebellion and vulnerability that were never suspected. Fortunately, the level of your dynamism is very high and your instinctive and pugnacious side, your particularly profuse energy will not leave you helpless for too long. The fire in your blood will put you back on the saddle towards new stampedes and conquests, as ambitious and glorious as they are perilous.

Because you are born under this sign, you are courageous, honest, enthusiastic, dynamic, swift, extroverted, straightforward, effusive, warm, impulsive, adventurous, bold, martial, competitive, but you may also be gullible, domineering, self-centered, impatient, foolish, thoughtless, childish, irascible, reckless, primary and a blunderer.

In love, Sir, more often than not, your passions are strong and varied. Far from being roadblocks, obstacles have a stimulating effect. You like quick victories and your love life is a series of conquests and of break-ups, as boredom often puts an end to the initial love that made you move mountains.



Your sexuality is powerful and prevails over feelings. You may marry early or on impulse, but it does not prevent you from having a rich and varied love life. Usually, you have few children.

### **The ruler of your chart is in Scorpio**

The ruler of the Ascendant, also referred to as the chart ruler, brings a few interesting nuances to the meanings provided by the Sun and the Ascendant. The sign in which the ruler of the Ascendant is posited fine-tunes the style of personality described by the Sun and the Ascendant. It may strengthen it if the sign is identical to either of them.

The ruler of the Ascendant, Morgan Freeman, is Mars. It is posited in the sign of Scorpio and makes you appreciate mysteries and the unknown. You need to understand, to solve riddles, and to take action behind the scenes, perhaps so as to be even more efficient. Your criticising skill is a weapon, but it may also backfire on you, just like your sometimes excessive obstinacy.

### **Aspects to your Ascendant**

Several planets form an aspect with your Ascendant, Morgan Freeman. Therefore, in their specific way, they modify your behaviour and your personality, which do not take on the pure characteristics of your Aries Ascendant only, but which are a blend of its characteristics with those of the said aspects.

#### ★★★★★ Moon semi-square Ascendant, orb 0° 04'

Sometimes, Morgan Freeman, your sensitivity clashes with the image you want to project. As a result, you may feel vulnerable and suffer if you let yourself be disheartened. Try to put things into perspective and to confront your emotions without fearing your external image. This is how you can compensate for this minor dissonance between the Moon and your Ascendant.

#### ★★★★★ Sun sextile Ascendant, orb -4° 09'

Your will is fuelled by a strong energy, Morgan Freeman. It enables you to take quick decisions which totally match your personal ethics. Thanks to this good harmony between the Sun and your Ascendant, you feel rather good about yourself, and your inner self perfectly matches the image you are willing to show!

#### ★★★★★ Neptune inconjunction Ascendant, orb 1° 37'

Neptune is in dissonance with your Ascendant, Morgan Freeman. You may have difficulties in controlling your emotions, and you tend to hesitate about the behaviour to adopt in society. In some circumstances, you distrust everyone, yourself and other people, without knowing the reason why. Keep your feet on the ground and do not allow your imagination to carry you too far away from sheer reality! No one nurtures bad intentions towards you. This is something you must realise if you do not want to get worked up about... nothing.

## Your Sensitivity

Your sensitivity is devoid of infatuation or carelessness, Morgan Freeman; you belong to the cerebral type and, due to your needs for inner security and for freedom, you consider feelings and emotions as burdens. You are apparently phlegmatic and almost detached. However, your swift reactivity and your fertile imagination make you appreciate friendly gatherings with numerous and varied exchanges. You do not wear your heart on your sleeve. At first, you seem cold but those who know you are aware of your very original and unique sense of humour. Your receptiveness is remarkable. Your observation talents and your detachment work wonders in the defence of your anti-conformist and rebellious ideas. Your stubbornness is obvious and it is very difficult to make you change your mind because you are affectively too vulnerable: it would require lengthy and thorough argumentations aiming at your intellect...

You are popular with your friends, Morgan Freeman. You easily shine, thanks to your sensitivity, your whimsical side, your mobility and your charm tinged with imagination. Even at work, you often win your clientele's favours, and if by chance, you are in a commercial team, you are chosen and sent ahead to deal with customers because you are so likeable!

You can happily express your emotions through shared projects - with your friends, preferably - in which you shine with selflessness and your childlike but endearing charm.

### ★★★★★ Moon sextile Venus, orb -1° 29'

The harmonious Moon-Venus aspect is an element of intimate balance that favours sensual and affective fulfilment. The search of well being includes all kinds of emotions and feelings. You love, you enjoy life in simple ways and you arouse your entourage's affection. The persons belonging to your inner circle are also objects of desire and pleasure. Tenderness and love are probably one and only thing: you are moved by the gestures of affection provided to you and by the daily acts which strengthen two persons' mutual attachment. Whereas other people dread routine, in your case on the contrary, it increases your amorous feelings. You loathe all kinds of violence, particularly in your intimate life. The danger of this planetary configuration may be your constant changes of mood: whims are often on the agenda... and your will is quite weak. One last point: this aspect is frequently found in the charts of people with an aesthetic or artistic sensitivity.

### ★★★★★ Moon square Mars, orb 5° 26'

The Moon-Mars dissonance suggests touchiness and sometimes, aggressiveness. You are irascible and very sensitive to all sorts of threats and dangers. You react very quickly, too hastily. To protect your well being, you must learn to control your mood, to coordinate your actions and to balance your opinions. You are often disturbed by plain facts: Either you seek refuge in your intimate realm and refuse to face the truth or, on the contrary, you are engaged in altercations, which forbid all tranquillity. It is important that you balance these two tendencies and that you alternate moments of action with phases of carelessness and relaxation. These two attitudes are relatively irreconcilable.

### ★★★★★ Moon quintile Uranus, orb -0° 06'

This harmonious Moon-Uranus aspect indicates that your well being depends on the original quality of your charm and on new-ness. You are not influenced by prevailing trends and fashion. You have a personal view of what a balancing private life should be. You enjoy unexpected situations, even extravagant ones. But if you feel that your living environment hampers your freedom, you suddenly change your attitudes and your habits. Independence is your true realm. You may show an exceptional inflexibility when your intimate life moves away from the patterns you need, deep down. Your entourage

must get used to your demands and to the values you are determined to keep with all your might and on which you are uncompromising. This determination does not allow for a laid-back attitude, or an indolence that so often causes degradations. You keep your own daily rhythms under control.

#### ★★★★★ Moon inconjunction Pluto, orb -2° 25'

This planetary configuration causes distrust (Plutonian distance) towards individuals, groups, or your own family environment (lunar values). It may bring about a feeling of affective or relational wound. The feeling of security is absent, or fragmented or illusive. How is it possible to feel integrated whereas you know that you are different and on your own? It is the myth of the « ugly duckling », with its different specific characteristics, an alien to its origins and its roots. It is important that you accept your differences and that you have them accepted by others, without forsaking your essential values. This is how you can exercise your group ownership without allowing them to exclude you or to repress your secret determinations. When this aspect is well integrated, it is a factor of lucidity for your emotions. You perceive without gullibility what is really at stake in your intimate relationships and the flaws of your environment. The fact that you do not readily trust people spares you many traps and delusions.

## Your Affectivity

In your chart, the Sun is in Gemini and Venus, in Aries. The natural predisposition for spontaneity of both signs implies that your affective destiny cannot be dull and devoid of adventure and conquest. Adventure is on the agenda of the Sun in Gemini, his legendary curiosity and his unquenchable thirst for discoveries. More than anyone, you need to be surprised and amazed. You presume each relationship to be enriching and each dialogue, meaningful. Conquest is on the agenda of Venus in Aries, her natural affective behaviour, her fieriness, her attitudes driven by her instinct or by the urgency of the moment. Loving intensely, on a day-by-day basis, and continuously renewing your reasons to love: your affectivity is open to multiple possibilities and to deep and various experiences. This does not imply instability forever. Nevertheless, you must learn to nurture a lasting relationship, to never let it sink and take root in barren security. Otherwise, you may grow weary as humdrum and stay-at-home behaviours become more and more boring over time! It is certain that a stable partner can help you find a balance jeopardized by your thirst for evolution and experiences. But a homebody partner – whether in the physical, psychological or intellectual senses of the term – cannot fully satisfy you. Unless, of course, you, yourself, take the initiative to live an exciting affective life and to vary your pleasures and your moods.

Love at first sight, flash in the pan, amorous impulsiveness? All these are part of your way of loving or to fall in love, Morgan Freeman. Throughout your relationship, you maintain this kind of jerky and lively style, that may seem childish or naïve, but that is so generous and cheerful! You are undeniably possessive and you are not concerned with your partner's opinion but, fortunately, you readily forgive because of your spontaneity and your authenticity. When your relationship is intense, everything is fine. There is no romanticism, no complications with you. You love with ardour and, except for a few crazes and opportunities for new pastures here and there, the only danger may be that boredom settles in. In that case, you leave without regret and you quickly forget what consumed you, not so long ago.

Morgan Freeman, Venus in the 1st house (also called Ascendant) represents your behaviour or your character, as seen by others. This position contributes to soften your personality and to bring a natural charm and an easygoing quality. It gives you a sparkling, attractive and sexy side: not only do you easily

express your feelings in a seductive and affectionate way, but they are also an integral part of your vision and the image you project. You want to please, you have a taste for beauty, even luxury, arts, music, you especially look for harmony in everything and diplomacy is one of your most renowned qualities. Therefore, you are lucky in the sentimental sphere, you establish links easily and you can expect to have long-lasting relations. Since you happily express your feelings, it's only right that you reap what you sow. There is no gap between your behaviour and your feelings, which endows you with exceptional assets for seduction.

★★★★★ Venus square Pluto, orb -0° 55'

Nothing is simple in love. You consider your love life with a distant and remote glance. You do not believe in obvious, transparent relationships. Love is a complex issue and its machinery is beyond you. To avoid delusions and indifference, the rules must be changed. Your feelings are alternately cruel and passionate, distant and burning, often paradoxical. Are you the executioner or the victim? Power struggles are omnipresent in your affective life. You seem unable to take life as it comes and to love without asking yourself questions, without doubting. You often love those who are indifferent towards you, while you despise those who love you. It is important that you change your attitude if you want a smooth and happy life. Rely on your forte: an indisputable lucidity that makes it impossible to delude your heart.

★★★★★ Venus square Jupiter, orb 1° 06'

This Venus-Jupiter dissonance indicates a strong will to seduce. However, there may be discrepancies between your words and your actions, as well as between your behaviour and your instinctive reactions. You may be carried away by a maelstrom of emotions, feelings and pleasures and you do not consider the possible consequences of your superficial attitude. Therefore, the apparent state of grace may turn into delusion. Proprieties and necessities of the moment forbid you to experience your desires. What you deem reasonable does not suit your heart's impulses. What a dilemma... Hopefully, as time goes by, you may reconcile your desires, your life patterns and the reasons of your heart with those of your mind.

## The Way You Take Action and Your Sexuality

Your iron will is part of your assets, Morgan Freeman. It is supported by an ingenuity and a skilfulness that may turn you into a mighty and feared personality. You have the knack of spotting weaknesses in persons you deal with and you can easily hurt them with your innate propensity to drill or to test their force. You are extremely stubborn and you never let go when you are convinced that you are right. Sexually, you are potent and passionate. You are domineering and secretive, with a magnetic personality. It is safer to avoid being taken in a conflict with you because you may be very aggressive and you bear grudges. In some cases, you may also be sadistic. Your personality is as secretive as it is domineering in the areas of action and sexuality.

Morgan Freeman, this atypical configuration in your natal chart is one of the most complex to describe because of the very nature of the 8th house, the house of transformation, of crises leading to personal reconstruction, but also the house of sexuality, hidden knowledge, investment and inheritance.

In addition, the 8th house always deepens emotions and quickly brings passion into the previously mentioned areas. In this house, the quality of Mars' expression depends on the rest of the natal chart.

In order not to make mistakes, it is safer to talk about a possible range of fields of predilection: your energy can be expressed efficiently in areas dealing with financial investment, death, possessions and sexuality.

This configuration may also simply increase the intensity of emotions connected with these hidden topics and, depending on the rest of your natal chart, it may or may not translate into life assets. More than with any other placement, you can be born again from your ashes, like the phoenix. After having undergone a few major ordeals, it is likely that you will have the strength and courage to do so.

#### ★★★★★ Mars trine Pluto, orb -3° 01'

You have a very personal way of taking action and of experiencing confrontations and struggles. The laws of the world are subtle, often with complex and hidden mechanisms. For these reasons, you prefer to act behind the scenes rather than openly. You manage your daily life in a distant and subtle fashion while you try to understand the logic underlying observed facts. You may also provoke events although you act as if you were not concerned. Your interventions will be as efficient as they are discreet. You may secretly transform your life and you live through the inexpressible motivations that connect you with the invisible realm. Things, which cannot be formulated, must be experimented and felt. You test experiences that your entourage find uninteresting and meaningless.

#### ★★★★★ Mars sextile Jupiter, orb 2° 5'

Coordinated action wins over almost all obstacles! You mobilize your energy and your fighting spirit advisedly and you take timely action. This is the reason why you are efficient in situations requiring courage, determination, swift responses and diplomacy, altogether. You do not fear confrontations but you never provoke them unnecessarily. You take advantage of your chances and you adjust your behaviour to concrete situations. You empirically handle events with relevance. The only danger is that you may be overzealous to seize any opportunity... even those that are not necessarily good in the long run. You should take the time to carefully consider the facts and their consequences. The swiftness of your reactions must remain an asset.

## Your Intellect and Your Communication Style

Your mind is calm and balanced; even though you assimilate slowly, your memory is remarkable. Your judgment is based on reflection and reason and draws on past experiences. Morgan Freeman, you are a good adviser, a reliable person whom people can confide in discreetly. You are full of good sense, cautious, methodical and disciplined and you are able to carry many good projects to a successful conclusion. You are very opinionated and determined in your actions. However, your tendency for intolerance and prejudices may offend your entourage. They wish that you exercised more flexibility instead of systematically refusing what cannot be immediately checked. You usually express yourself with a lot of charm and this is what allows you to get people to better accept your well-established habits.

Your intellect and your communication abilities are not directed towards any particular field, Morgan Freeman: indeed, you are by nature curious, lively, mobile and you generally adjust remarkably well to your surroundings.

Your versatile personality prompts you to get interested in many things, and it is not exaggerated to say that your intellect and your flexibility constitute strong assets for your life. People around you may rightly

or wrongly perceive a kind of shallowness because of your adaptability and skilfulness - sometimes too opportunistic - that are your strong points.

★★★★★ Mercury trine Neptune, orb -1° 31'

Your sense of psychology and of human intimate mechanisms is acutely developed. Your relations are nuanced, clever and guided by a good intuition of individuals. Without effort, you pick up what is at stake in relationships and in contacts. Your « sixth sense » inspires you and may take you into strange roads. On the relations' plane, there is an indisputable subtlety. You know what you should not say or, on the contrary, you naturally find the suitable words. Your natural and non-rational attitudes often prove right. The unknown fascinates you... Your curiosity for occultism and mystery is keen. Besides, life is a huge human enigma for you.

★★★★★ Mercury conjunction Uranus, orb 6° 2'

Your state of mind is innovative and turns the surrounding world into a constantly moving field of experiences. You ask relevant questions ... and you answer them. Although you are flexible when you ought to, your principles and your beliefs are unwavering. It seems difficult to catch you off your guard. You multiply observations, relationships, contacts and you never lose face: actually, your mobility hides an unshakable determination and a deep lucidity. In a split second, you are able to catch the useful information or the enriching relationship. The original and fanciful steps you take exclude monotony. Your approach to life is amazing!

★★★☆☆ Mercury opposite Mars, orb -6° 19'

This Mercury-Mars dissonance brings about impulsiveness into relationships and contacts. Your sense of controversy and criticism leads to blunders and thoughtless actions. Your verbal violence may harm the efficiency of your actions. You certainly display your views without circumlocution. Your straightforwardness would be commendable if it did not cause those blunders that spoil many situations. It is important that you learn to control your decisions, to coordinate your mental abilities and your fieriness, so as to fully express the quickness of your mind and of your action. Learn to count to ten before you say anything, as it is an excellent exercise for you!

★★★☆☆ Mercury semi-square Saturn, orb -0° 42'

This Mercury-Saturn dissonance does not allow for simple and spontaneous relations. Your vision of the world is complex. You are sensitive to the fragileness of human relations and you are doubtful of transparent situations. You need to look for hypothetical calculations and you suspect that unclear reasons are underlying beneath dialogues and encounters. Your sociability is limited. You are a loner because you dread relationships and you trust very few people among your close friends. You ask yourself more questions than you can find answers! Therefore, you are on the look out, troubled by the unknown. Everything is subjected to your questionings. It seems difficult to find certainties and to be satisfied with commonplaces that cannot soothe your doubting mind. The forte of this aspect is that it brings about undisputable capacities for discernment. Although your lucidity may hinder your relations, it also grants a lasting protection against gullibility. By nature, you belong to the category of the sceptics!

## Your Goals, Motivations, Career, and Destiny

### Your Sun is posited in the 2nd House

Morgan Freeman, even though you do not acknowledge it, or you are not (not yet) aware of it, your entire will is tremendously helpful for your achievements, in terms of acquisition of goods and material security. Increasing your resources is the driving force behind your actions and your decisions.

Your organizational skills and your efficiency are considerable. They serve the purpose of your destiny in a remarkable way. In the fields of finance, industry, technology, real estate etc., your practical sense allows you to develop your resources, your unlimited earning abilities and your material power.

On a more abstract plane, you are quite possessive, particularly in the emotional sphere or in your relationships. You very much appreciate loyalty and commitment because they are sacred values to you. There is nothing you loathe more than unreliability. Indeed, since you set very high standards for yourself, you naturally expect the same level of quality from people.

However, you must remain cautious because your tenacity and your efficiency may turn you into a stubborn and too materially-oriented person. When facing the few major ordeals life has in store for you, you may take more than you can chew and your greed for quick gains may expose you to delusions, which are proportional to the level of your hopes.

### **The ruler of your chart is in the 8th House**

The ruler of the Ascendant, also referred to as the chart ruler as explained in a previous chapter, is also posited in one of the twelve Houses of the chart. Just like the Sun in his House, the ruler of the Ascendant provides certain abilities, or it makes you appreciate more keenly certain areas of life.

The ruler of your chart is in the 8th House, Morgan Freeman. This configuration gives you a strong inclination for mysteries, the unknown, the occult, sexuality, as well as death. In the materialistic area, matters of inheritance and, more generally, other people's money - stock exchange, speculations, donations, etc. - may play a major role in your life.

### **Aspects influencing your ambitions**

Regarding your destiny or your career, the following aspects of your natal chart allow to fine-tune what has just been said above:

★★★★★ Uranus trine Midheaven, orb 2° 46'

Thanks to this soft aspect of Uranus to your Midheaven, Morgan Freeman, you are endowed with the gift to let yourself be carried away by the changes cropping up on your way. Instead of being disheartening, modifications affecting your professional or social environment... stimulate you! Then, you may show opportunism, in the good sense of the word, and throughout your life, you may experience strokes of good luck, the consequences of which can be increased, thanks to your talent and your lack of fear whenever you face newness.

★★★☆☆ Saturn square Midheaven, orb -5° 09'

Saturn is in dissonance with your Midheaven, Morgan Freeman. Of course, nothing really serious is to be feared. It is just that sometimes, you feel that an unfair slowness keeps on delaying the achievements you deem that you deserve right now. You must work twice as hard to climb up the rungs of success, and above all, you must not get disheartened. Effort is one of the values you must work on, and it is a punishment by no means. It is obvious that your goals are achievable, but you must remain on the right

track and show perseverance. That's all!

★★★★★ Sun square Neptune, orb 5° 47'

If this Sun-Neptune dissonance is not well integrated, it may bring about confusions and errors of judgment. It is the signature for Don Quixote in search of chimera, pursuing impossible dreams. Your intuitions may lead to an incorrect estimation of facts. Bohemian life is certainly pleasant. But it is often necessary to remain realistic, lest to be exposed to delusions. Carelessness and letting-go is not suitable. In order to properly integrate this aspect, you must control the possible drift of a wandering and fabulous sensitivity. This aspect favours poetic and romantic inspiration. But you must not let it rule your concrete actions. It is important to allow your intuitive capacities to be fully expressed while keeping a lucid mind, simultaneously.

★★★★★ Mars semi-square Midheaven, orb -0° 26'

Because Mars is in dissonance with your Midheaven, in some circumstances, you may feel misunderstood, Morgan Freeman. In society, you may even feel hostility towards you as you try to climb up the steps of your professional life, or when you strive to reach a higher social status. Your efforts may be resented. You must be twice as careful as you usually are and tone down your behaviour in order not to be rude to other people, even though from your viewpoint, and it is actually most often the case, it only has to do with misunderstandings or some eagerness on your part.

★★★★★ Sun sesqui-quadrate Jupiter, orb -1° 28'

This Sun-Jupiter aspect indicates a strong desire for social and professional integration but it may cause a few difficulties of expression in that regard, owing to excesses or immoderation. There may be discrepancies between your objectives and the means implemented to achieve them. The danger of this configuration may be that you forsake an essential part of yourself for some ambitious but out of proportion plan. Too many efforts of adaptation and an excess of opportunism may make you miss the target. It is important that you remain true to your values and that you do not seek, at any cost, to adjust your attitudes to the situation. However, do not fall into the opposite trap: a need for the absolute that forbids compromises, although they are so necessary. You must reconcile idealism with the demands of the moment, the respect for principles with the sense of timeliness. When this configuration is not well integrated, things get out of hand. Extravagances are glaring. They may translate into an exuberant, overly demonstrative disposition. Personal ambition turns into pride, and joviality becomes immoderation. Outbursts of anger are frequent. However, in a reserved and cautious context, this configuration reveals its positive nature.

★★★★★ Sun inconjunction Midheaven, orb 1° 48'

What you really want to do, or the way you consider everything, may be in contradiction with your professional goals, Morgan Freeman. You may experience conflicts of authority, or a few hesitations over how to manage your career. In any case, you must display flexibility and water down your wine if you want to remain on the right track and achieve professional success. It is the only solution to this discrepancy between the Sun and your Midheaven.

★★★★★ Neptune trine Midheaven, orb -7° 35'

Thanks to this soft aspect of Neptune to your Midheaven, Morgan Freeman, your intuition is very sharp, as far as your possibilities for success are concerned. Thus, you have no difficulties in finding your professional or social path, and your nose tells you whether something is good or not for you, even before you start to analyse it. Your imagination and your visionary qualities accompany you along your journey



towards success.

★★★★★ Sun semi-sextile Uranus, orb -0° 58'

This aspect reinforces the determination as well as the will to further your original, sometimes revolutionary, ideas and designs. Your capacity of innovation is important for your image. You have the soul of a leader. You display a forceful and synthesizing mind. You may tend to oversimplify or to schematize situations. In most cases, you know where you are heading to and how to reach your goals. Your determination is two-edged... not everybody will appreciate your contrasted standpoints. It is yes or no, black or white! This planetary configuration indicates certainties. When it comes to acting according to your inner motivations and to respecting your models, you can show an unusual willpower and sweep aside all obstacles lying on your path.

★★★★★ Sun semi-square Pluto, orb 1° 39'

You are dealing with both sides of the coin. People are mistaken when they think that they know you well, because the image you project does not necessarily depict what you really are. You may look like any given model, whereas you actually consider social values to be empty and childish. Deep down, you are an anti-establishment person and you do not belong to the world and its laws. Or, on the contrary, you may project a more marginalized image and make it a point of honour to literally stick to your aspirations' ethics. You do not know who you are really, and where you stand. You may choose some sort of marginality, the adherence to another realm and a different scale of values. Unless you choose a life that apparently lives up to the expectations of others. In that case, you preserve a corner for your private secrets, with no norms, no fashion concerns, relationships off the beaten tracks, passions very removed from conventions. Your attitudes may seem paradoxical as you shift from commitment to refusal and from involvement to withdrawal.

## Your Assets and Your Part of Joviality

The present of the planet of Greater Fortune to you Morgan Freeman, is a positive predisposition for organization, and the ability to reason thoroughly and on a long-term basis. It also endows you with authority and seriousness in all things: your ambitions are clearly favoured, even though it is detrimental to your warmth, your flexibility or your conviviality. However, you can develop all these sides if you want to.

This present from the stars is by no means insignificant, Morgan Freeman, the house of career, hosting the planet of Greater Fortune, can but favour your professional life. As time unfolds, it develops into a most pleasant scope. Sooner or later, it brings about success and your peers' recognition. You do not fear responsibilities, and you face them properly.

The planet Jupiter symbolizes expansion, broadness and generosity. Jupiter is associated with the functions of synthesis, enthusiasm and optimism. In your natal chart, his house position is more important than his sign position because, like Saturn, Uranus, Neptune and Pluto, he is a slow planet. Many people born in the same period have Jupiter in the same sign. This is the reason why the sign occupied here is less meaningful than when it is occupied by the so-called fast planets, i.e. the Sun, the Moon, Mercury, Venus and Mars. Therefore, some caution is to be exercised as you read what follows.

Jupiter in Capricorn reinforces the zeal to work. Your seriousness and your organizational skills are

assets that will develop increasingly throughout your life. This configuration may favour your social ascent. It is usually in the second part of your life that you can fully enjoy its benefits.

## Your Serious Side

Your natural fieriness and your impulsiveness are slowed down and well-controlled. You gain in stability, tolerance, and stamina what you lose in spontaneity, competitiveness, and freshness.

The combination of the house of ordeals and sacrifices with the planet of renunciation may seem awkward at first. However, Morgan Freeman, it may help you assert yourself when you are facing painful circumstances, or when destiny's strikes bring about periods of isolation.

If your generosity of spirit and your will are up to the stake – your quick and intense evolution - you may take advantage of this promising but difficult configuration. Then, you become stronger, more lucid, and more dedicated than ever.

The planet Saturn symbolizes contraction, effort, time, limitation and concentration. Saturn eliminates anything that is not authentic, sooner or later. It is impossible to cheat him as he gives an irresistible desire to form a coherent whole with oneself, in responsible and wise ways. He is the great purifier. He represents our limitations but also our truth. In your natal chart, the house position where Saturn is posited is more important than his sign position because, like Jupiter, Uranus, Neptune and Pluto, he is a slow planet. Many people born in the same period have Saturn in the same sign. This is the reason why the sign occupied here is less meaningful than when it is occupied by the so-called fast planets, i.e. the Sun, the Moon, Mercury, Venus and Mars. Therefore, some caution is to be exercised as you read what follows.

Saturn in Aries decreases your impulsiveness, your primary-ness and your spontaneity. But it endows you with more patience, tolerance and reflection in the long run.

## A Few Special Points

### Your Uniqueness and Your Utopias

You are an original person, sometimes eccentric, even extravagant, and your actions or your words are always surprising. The expression of your humour is out of touch with reality and unpredictable. Most of the times, things are fine and you radiate with a peculiar and very special charm. With you, it is impossible to get bored!

Your will to behave differently from the mass of your fellow men and to assert your independence is part of your pride. Be wary that it does not backfire on you. It would be a pity if excessive unpredictability made you appear as... bizarre!

## Your Inspiration and Your Illusions

Your approach to daily life and your behaviour in your work environment are whimsical and abide by one single law: your mood or your feelings of the moment!

Although it may be detrimental to your own organization, it also endows you with qualities such as being easy-going, helpful, and ready to give assistance to those whom you perceive as nice persons.

Your health is quite fragile and, if the emotional sphere is unsatisfactory, you may transfer your moods to the physical plane and, for instance, you may be affected by allergies or problems difficult to identify.

## Your Passion and Your Authority

In general, your childhood was under stress, for many different reasons. Your early life was not very easy, and you probably felt a deep anxiety for reasons... that were not always real.

In your intimate and private sphere, when you feel in confidence, you may be domineering and authoritarian, whereas in public, you never show this facet of your personality.

Your sensitivity is acute, and you may be affected by trivial things without ever displaying your hurt feelings. But as you mature, your finesse becomes an asset instead of an element of vulnerability.

Symbolically, according to the Tradition, your father was authoritarian or domineering. This is not always true, but this is how you perceived him when you were a child.

## Your Isolated Planets

In general, the ten planets of the chart are connected to other planets by major or minor astrological aspects. It is owing to those ties that the planets' energies can manifest in the chart owner's personality and play out within safeguards according to a specific tonality.

It seldom happens that in a natal chart, a planet is totally disconnected from the nine other planets.

Astrologers have observed that when such a case occurs, the person feels the energy of the unaspected planet in quite a singular way, very jerky and powerful at the same time. Thus, for instance, the famed astrologer Jean-Baptiste Morin de Villefranche wrote that "an unaspected planet heralds that something strange or extraordinary will take place regarding the meanings of the house in which the said planet is posited" (source : l'astrologie selon Morin).

Rules for detecting an unaspected planet: among all the testimonies that we have reviewed to this day, based on our experience, we tend to agree with American astrologer Janis Huntley who accepts seven aspects, which involve the zodiacal twelve sections of 30 degrees. The aspects to be considered are the conjunction (0 degree, cooperation or tension), the semi-sextile (30 degrees), the sextile and the trine (60 and 120 degrees respectively, aspects of cooperation), the square and the opposition (90 and 180 degrees respectively, tensed aspects), and the quincunx (150 degrees, slightly tensed). In this detection, the chart's angles are not taken into account.

In any case, it is important to remember that an isolated planet clearly expresses its influence when it is a personal planet. Thus, when the Sun, the Moon, Mercury, Venus, or Mars is isolated, it is certain that the effects described by Jean-Baptiste Morin de Villefranche will become manifest. As for Jupiter, Saturn, Uranus, Neptune, and Pluto, one must be cautious because the volume of cases documented is not yet large enough.

Your chart has no isolated planet, and this particular case does not apply to you.

## Annex 1: Your Minor Dominants

The five following dominants are less significant than those described at the beginning of your report. They may not be strongly felt. In some cases, they add several minor details to the analysis of your character, but they are rather for curiosity purposes. It is not necessary to take them into account when you first read your portrait.

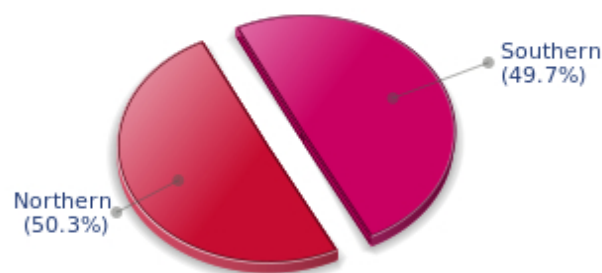
### Your Planetary Repartitions: Northern, Southern, Eastern and Western Hemispheres

The axis linking the 1st house's cuspide (the Ascendant) to the 7th house's cuspide - the Descendant - divides the zodiac into two bowls, a superior bowl, in the South, and an inferior bowl in the North. Quoting an expression by the famous American astrologer Rudhyar, the Southern part and the Northern part correspond to two functions: "being" and "doing". Other concepts are also associated with this North and South distribution, such as introversion - Northern hemisphere - and extraversion - Southern hemisphere - being or appearances, inner life or external life, reflection or action, dreaming one's life or living one's dreams, the abstract or the concrete, backstage or limelight.

This is not about determination but about personal inclination: thus, some people will be thrown into public life despite a prominent Northern hemisphere. If this happens, however, it will not be due to their will, their taste or their deep nature. Conversely, a prominent Southern hemisphere will not bring about a famous destiny to its owner, even if he tends to turn the spotlight on himself, or if he looks for a more active life. It is a matter of deep nature and natural inclination. Of course, none of the typologies is "superior" to another.

In your birth chart, Morgan Freeman, the ten main planets are distributed as follows:

### Your Northern and Southern Hemispheres



Morgan Freeman, the planetary elements of your chart are well balanced between the North and South hemispheres. As a result, your public destiny and your inner life are harmonious, and there is no conflict between your actions and your thoughts. Your private and public spheres coexist in harmony and naturally match your temperament.

The birth chart is divided into two other parts, Eastern and Western, by the axis linking the Midheaven to the Imum Coeli.

The Eastern part, on the Ascendant side, shows the person's ego, will, magnetism, and vitality, whereas the Western part, on the Descendant side, symbolizes other people, communication, relationships and their influence, as well as flexibility and adaptability.

Morgan Freeman, here is the planetary repartition in your Eastern and your Western hemispheres:

### Your Eastern and Western Hemisphere:



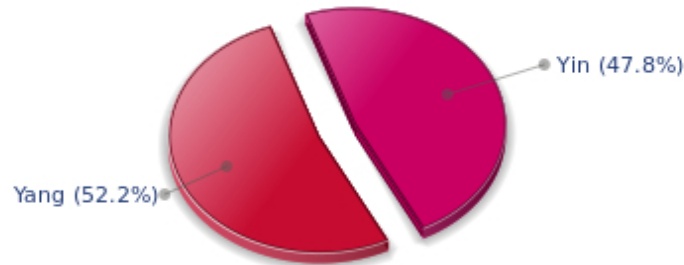
The predominance of planets in the Eastern hemisphere of your chart enables you, Morgan Freeman, to assert yourself and to rely on your determination: you know what you want and you have a tendency to take action and to decide with your personal goals as priorities, even if they can be in contradiction with what others think.

A definite asset... provided that you never make mistakes in your choices. You should pay more attention to your entourage in order to counterbalance your nature and to take advantage of your assets wisely. The danger is that you may be too authoritarian and not conciliating enough. Strong determination coupled with flexibility and acute sense of communication are qualities you should develop.

### Your Yin and Yang Polarity

The twelve signs are divided into two polarities, called active or passive, or sometimes masculine and feminine, positive and negative, Yang and Yin. This classification corresponds to two quite distinct tonalities, the first one bringing extraversion, action, self-confidence and dynamism, the second one, introversion, reactivity, reflection and caution. None is superior to the other, each group has its own assets and shortcomings. Odd signs - Aries, Gemini, Leo, Libra, Sagittarius and Aquarius - belong to the first group, whereas even signs - Taurus, Cancer, Virgo, Scorpio, Capricorn and Pisces - belong to the second group.

## Your Yin and Yang Polarity



According to the disposition and qualities of your planets and angles, you are rather influenced by Yang energy, the active polarity, Morgan Freeman: more concerned about actions than reflection, you sometimes rush without standing back and without the deepness that is needed. However, your spontaneity prompts you to take fresh starts, even after repeated failures caused by your rashness.

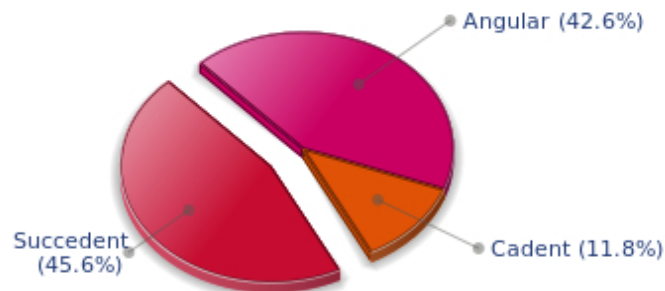
### Your Houses' Accentuations

Houses are split up into three groups: angular, succedent and cadent.

The first ones are the most important ones, the most "noticeable" and energetic houses. They are the 1st, 4th, 7th and 10th houses. Their cuspides correspond to four famous angles: Ascendant for the 1st house, Imum Coeli for the 4th house, Descendant, opposite the Ascendant, for the 7th house and Midheaven for the 10th house, opposite the Imum Coeli.

Planets are evaluated according to a whole set of criteria that includes comprehensive Western astrology rules. At their turn, planets emphasize specific types of houses, signs, repartitions etc., as previously explained.

## Your Houses' Accentuations



The emphasis is on succedent houses in your chart, namely, the 2nd, 5th, 8th and 11th houses, Morgan

Freeman: this configuration usually endows a personality with affective and sensitive qualities. Obviously, to the detriment of self-confidence or self-assertion, but your heart qualities may be very important. These houses also favour realization. Time and patience are part of their characteristics. However, they are only indications and you must include them in the rest of your chart in order to see whether they are validated or not!

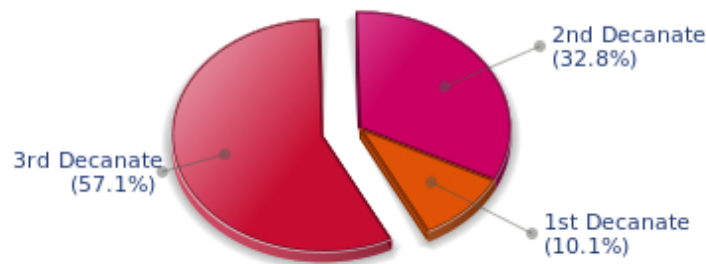
### Your Esoteric Decanates

Each sign contains 30 degrees and can be divided into three equal parts: the decanates. The Tradition indicates that specific meanings can be associated to each of the three decanates. Their sphere of activity is usually limited to the Sun sign, however, it is even more interesting to observe the distribution of all the planets in the chart to get an idea of the respective importance of the three decanates, which can complement the description of the personality.

These meanings must be considered with the greatest caution. Indeed, they are minor characteristics that can only underline other outstanding traits of character.

Traditionally, the first decanate highlights the characteristics of the sign where a planet is located. The two other decanates correspond to sub-dominant planets, depending on the nature of each sign. This system leads to a multiplication of meanings and it is impossible to have a clear understanding: here, we prefer to give only the meaning of one decanate in comparison with the other two, within the birth chart as a whole. Again, the greatest caution is needed with regard to this minor indication as it is not always reliable: it is not essential that you read these texts in the beginning. You can get back to them later on, once you have read more important interpretations

### Your Esoteric Decanates



The third decanate, which means the part between 20° and 30° of any zodiacal sign, prevails in your natal chart, Morgan Freeman. It contains the degrees of spirituality, traditionally more delicate to deal with, since they incline towards evolution and therefore, destabilizations. Individuals with an emphasised third decanate may have deeper sensitivity than most people, which often brings ordeals but also spiritual rewards.



## Annex 2: Karmic Study

The karmic theme is a good complement to the psychological portrait, or natal chart. This analysis is based on the positions of the Lunar Nodes, the Black Moon and the Part of Fortune: they are also called fictitious points and describe the spiritual purpose of your destiny. Because there is in all of us an experience and a quest, our life is an evolutionary journey... provided that we head towards the right direction, of course! Indian astrologers highly prize the Nodes axis (North Node and South Node). It is the Ariadne's thread that we are invited to follow. The Black Moon indicates the sector where we are most likely to transform or to transcend, whereas the Part of Fortune points out the area where we can easily express our specificity.

### The Lunar Nodes: a spiritual path

Lunar Nodes have their roots in the Indian tradition and they are based on a simple concept: each of us have a mission of their own, here on earth, a destiny, a course. According to the Indian philosophy, life is a school: the nodal axis describes our past experiences (South Node, our karma, our spiritual inheritance or our previous lives), and our aims on earth (North Node, our Dharma, the purpose of our current incarnation). This is the reason why the study of the lunar nodes is called "Karmic astrology". Here, we shall not step into hypothetical past lives. Wherever our current trends may come from, all that really matters is that we become aware of the purpose of our life, its finality and our dharma. We are likely to understand our life purpose around the age of 37, when the Lunar Nodes return to their natal position.

Your destiny hinges on spiritual values. Early in life, you developed relationship abilities and you showed a healthy curious mind. You are insatiable when it comes to exchanging new concepts but you limit your horizon line to tangible and useful facts. As time goes by, you feel the desire to leap further and to discover new territories or different philosophies. You may have a growing interest in metaphysics or in religions, or you may travel, so as to keep up with your desire for evolution. Never mind! What is essential is that you never stagnate and that the vagaries of life do not take precedence over your thinking process or your spiritual growth. You dream of getting rid of everyday constraints and of reaching another dimension of life pertaining to large spaces and to ideals. You need to live intensely, to discover again and again. You long for a better world? The danger is that you may get trapped in illusions and utopias. But life would be so dull without an ideal!

Your life's purpose is related to your disregard for material goods and dispossession. Whether or not you enjoy comfort, a financial or affective capital, someday, you question your assets and you start anew. Of course, you enjoy life's simple joys. The security granted by stable relationships allows you to cope with possible delusions. But life undertakes to remind you that nothing is eternal here below, the wheel keeps on turning and, at any time, one may irrevocably lose what one thought to possess forever. Paradoxically, ordeals and losses make you stronger: as time goes by, you feel freer, more detached from the values of this world and closer to the essential... The spiritual life can't be bothered with the prosperity sought after by ordinary mortals. As you give up the values that you once thought to be indispensable, you gain in terms of lucidity and, eventually, in terms of tranquillity. Your powers and your inner dimension will then impress many people: do not overdo it!

### Lilith or the Dark Moon

The Black Moon is the spark of refusal and distance that is dormant in all of us. Depending on the sign where she is found in your chart, she highlights the desire to transform and to sublimate a part of your life. The Black Moon is unfathomable and mysterious. She gives a different dimension to the sector she

touches. Her manifestations are subtle; nonetheless, she is powerful, implacable, demanding to the extreme... The Black Moon is also called Lilith. She is the inner flame of your heroism and insubordination.

The notion of freedom takes a special meaning: to be free does not only mean being able to move as you please here and there, nor does it mean having a few hours of leisure available. Above all, it means being able to lead a spiritual quest, to access a different dimension in life: to encounter, to travel, to love and to never be hampered by contingencies, never be slowed down by daily life. That'll take some doing! The comfortable routine of the contemporary world, in this regard, puts you off.

### **The Part of Fortune in House**

The Part of Fortune is a very ancient fictitious point that depends on the lunar phase at the time of birth. The astrological house tenanted is particularly strengthened. In your chart, the Part of Fortune is in the 4th house: you are constantly looking for basis and for roots. You seek security and integration into a group, a clan or a family. To fully blossom, you need to feel that you are in harmony with your environment. Sound concepts and stable ambiances are reassuring to you. It is within the familiarity of a homogeneous entourage that you are at your best.

### **Retrograde Planets**

The karmic tradition insists on the issues related to the so-called retrograde planets. They are considered to be the inheritance of a past that was not well experienced, a sort of unfinished business. The interpretations of the retrogradation may seem negative or excessive to you. However, you may relate to a scenario that you have often and repeatedly experienced... as if you underwent several setbacks that all have the same cause. Until the day you become aware of it and you can free yourself from it! Through the slow integration of these planetary energies, you will be able to overcome your difficulties and to pay your karmic debt. Actually, each retrograde planet highlights an opportunity for evolution. Nothing can be achieved without the will to grow spiritually and to defeat your own demons.

Mars is retrograding in your chart: according to the Tradition, this suggests karma of aggressiveness. What does it exactly mean? You may not control your energy, at least during the first part of life. In your interactions with the world, you may not dare to give your reactions free rein. During your childhood, as for all bullied persons, your spontaneity was smothered. You tend to internalize, even to repress your desires. You chew things over and you fuel your resentments without taking any action... until they explode! Then, your aggressiveness suddenly blows up in an excessive and out-of-proportion way. In itself, martial energy is positive: it allows coping with any given situation. However, the fighting spirit is a virtue only when impulses remain under control. You must endeavour to balance your quarrelsome tendencies and to respond to provocations without losing your self-control. Do you lack audacity? In that case, force your natural self, be more dynamic, otherwise you may undergo the same harmful outbursts again. It is the only way for you to feel better in your body and in the world!

With Jupiter retrograding on the day of your birth, the lesson is about grasping the opportunities that are offered to all of us but that some people take advantage of, while others don't. Persons who quickly adjust to circumstances are more likely to achieve their ambitions than those who need to be encouraged to take action. During your childhood, you may not have efficiently responded to life's concrete enticements, leaving other "luckier" people to achieve what you were dreaming of. You preferred to enjoy yourself, here and now, rather than to look for new paths of development or exploration. It is possible that you were not optimistic enough. Enterprising minds were alien to you... Later, you find out

that, indeed, you give little importance to the credit of the frenzied expansion praised by the modern world. Your path is not oriented towards personal prestige. With subtlety, you integrate non-material values and you accept well the fact that you missed past opportunities.

**N.B:** modern astrology attaches less and less importance to the principles of retrograding planets.

## Conclusion

A few remarks are needed here in order to allow you to fully take advantage of your astrological portrait: firstly, do not forget that a birth chart is also a photograph of the sky at birth and a structure that not only contains the personality's characteristics, but also its potential evolution.

We all know that, in real life, people begin to know themselves when they are in their forties, or even later. Likewise, several traits of character in a portrait may seem surprising: in most cases, it means that such features are not yet developed.

Some personalities reveal themselves late in life, whereas others are more precocious. It must be remembered that psychological structures are in a state of continuous evolution because they are influenced by unfolding events and gradual maturity. We can never underline strongly enough the "mobile" nature of the personality, throughout a lifetime.

On the other hand, it is difficult to discriminate what is "already present" at this moment in your life when you are reading your chart's interpretation, from what will appear later in the logic of your evolution: you must sort out all the pieces of information provided and, in most cases, you will see that your astrological portrait is helpful for your endeavours to know yourself better.

Finally, several readings of an astrological portrait are usually necessary in order to absorb all its different meanings and to evaluate the relevance of each character trait.

In any case, better self-knowledge obviously contributes to faster personal blossoming, and it is undoubtedly one of astrology's major roles: contributing to know oneself better, in order to improve more rapidly, to deal with one's weaknesses and to avoid its drawbacks, and to take advantage of one's assets as efficiently as possible.

---