





Michelle Williams's Astrological Portrait



Introduction	2
Your Planets, Houses, Aspects, and Natal Chart	4
Preamble	7
Your Planetary Repartitions	8
Your Dominant Modes and Elements	9
Your Dominants: Planets, Signs and Houses	10
Your Style, Behaviour, and Peculiarities	15
Your Sensitivity	19
Your Affectivity	20
The Way You Take Action and Your Sexuality	22
Your Intellect and Your Communication Style	23
Your Goals, Motivations, Career, and Destiny	24
Your Assets and Your Part of Joviality	27
Your Serious Side	27
A Few Special Points	28
Your Isolated Planets	29
Annex 1: Your Minor Dominants	30
Annex 2: Karmic Study	34
Conclusion	36



Michelle Williams's Astrological Portrait

Introduction

To fully benefit from this portrait, we suggest that you read its introduction and its preamble carefully, and then that to take the time to soak up the interpretations of each chapter. Given the large number of texts, which mirrors the human being's complexity, you may need to go through the contents several times, so as to get a good grasp of their meaning and to know yourself better. This will reward your patience.

The purpose of this report is to describe your psychological portrait and to highlight the most fundamental features on the personal area. The report begins with the analysis of your planetary dominants and outlines your personality's general traits before going into further detail. Minor dominants are analysed at the end of Annex 1, for purposes of clarity. Your report then delineates the various facets of your personality:

In general, even when relationships are not involved, we express ourselves and we feel according to our character and our personal motivations: this is indicated by the Ascendant and the Sun sign which both give details on the way we function. They shed a tremendously important light which allows to figure out your personality. Here, we describe your Sun sign (your inner self), your Ascendant (your behaviour as seen by others), and the ruler of the Ascendant (interesting additional pieces of information about the style of your personality). These descriptions alone cover nearly a third or a half of your psychological signature, depending on your natal chart characteristics.

Then, we address your sensitivity, or in other words, the way you receive things and how you express your emotions ; it works as a constant filter for all your exchanges, even when it becomes a more secondary element in your amorous relationship, because at that moment, affectivity prevails. Sensitivity is the way you perceive things, it is your radar, your daily mood, and at the same time, it indicates how you react to your entourage, on a daily basis. It is what others immediately see of you. In the second paragraph, we explain in which areas of life your sensitivity and your emotions are strongest, therefore, where you are most vulnerable.

After this, it is your affectivity, the way you love and how you charm, that comes into play as soon as you fall in love: the first part indicates its basic structure or its main form. The second part describes the areas where it is best expressed and how you display it, according to your personality.

A third fundamental area deals with your mode of action and your sexuality: how you behave, how you manage to obtain what you want, what kind of desires you have. There are twelve possibilities, very

different from one another. The study discloses the specific one that applies to you. In the second paragraph, we explain in which life areas you may most efficiently take advantage of your capacity for action and for conquest.

Your ways of communicating and of thinking are obviously among the major elements that must be integrated into the delineation and the description of your personality. Indeed, they influence your general behaviour and may modify or enhance the image your project (for instance, extraversion may “compensate” a weak affectivity, but a huge number of cases are possible). An additional chapter indicates the favourite areas where you enjoy communicating, thinking and meeting with people.

Besides, we analyze an even more personal aspect that is important to define and understand what may occur within your couple: each of us have a centre of interest, a privileged manner to be fulfilled or to achieve our destiny; this main motivation is indicated by the positions of your Sun and your chart ruler in the astrological houses and we provide you with its detailed description.

A natal chart contains the potential for specific fulfilment and a whole range of assets, protections and qualities. How does the lucky factor manifest in your personality? In which area can you best exploit your qualities? The answers are precisely revealed to you in this chapter.

On the other hand, we all feel in us a part of vulnerability, doubts and fears. How does this part of solemnity or serious side play out? How is it possible to handle it in order to evolve and to get rid of useless elements? All this information is provided to you in these two paragraphs.

Then, you can discover three additional traits of your personality that must be considered as secondary ones. They deal with your predispositions, which means that they need to be triggered by external events because they are not influenced by your will; let's call it a part of fate. Please, bear in mind that your destiny can unfold only in accordance with what you are: therefore, even if they belong to your more unconscious self, these characteristics are parts of you, definitely.

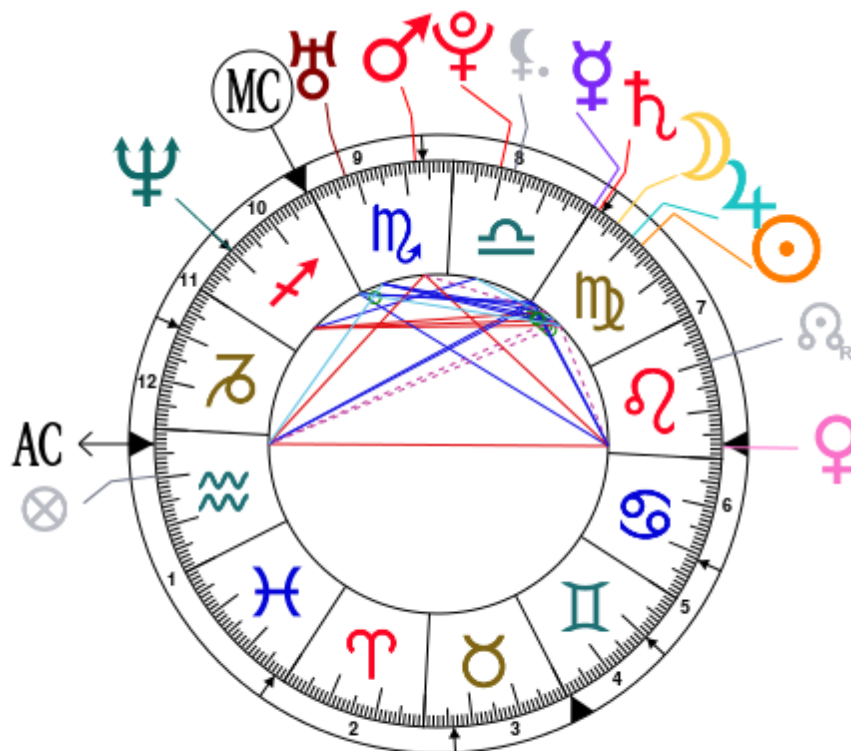
The karmic chart complements the psychological portrait or natal chart. It is based on the positions of the Lunar Nodes, the Black Moon, and the Part of Fortune. These elements of the chart, sometimes referred to as fictitious points, provide information about the spiritual meaning of your destiny. Owing to the fact that we all have in us acquired knowledge and the urge to go on a quest, our life is an evolutionary journey... However, these texts must be read with great caution: this is the reason why you will find this analysis in the Annex 2 of your report.

Your Planets, Houses, Aspects, and Natal Chart

Michelle Williams, born September 9, 1980, at 06:15 PM, Kalispell (Flathead), Montana [114.18W ; 48.11N ; 6W00]

Natal Planets				In House	Natal Houses (Placidus)		
☉ Sun	17°27'	♍ Virgo	Virgo	House 7	House 1	3°03'	♒ Aquarius
☾ Moon	23°59'	♍ Virgo	Virgo	House 7	House 2	27°48'	♓ Pisces
☿ Mercury	29°53'	♍ Virgo	Virgo	House 8	House 3	6°11'	♉ Taurus
♀ Venus	2°23'	♌ Leo	Leo	House 7	House 4	0°47'	♊ Gemini
♂ Mars	7°45'	♏ Scorpio	Scorpio	House 9	House 5	20°02'	♊ Gemini
♃ Jupiter	20°01'	♍ Virgo	Virgo	House 7	House 6	8°49'	♋ Cancer
♄ Saturn	28°35'	♍ Virgo	Virgo	House 8	House 7	3°03'	♌ Leo
♅ Uranus	22°14'	♏ Scorpio	Scorpio	House 9	House 8	27°48'	♍ Virgo
♆ Neptune	19°56'	♐ Sagittarius	Sagittarius	House 11	House 9	6°11'	♏ Scorpio
♇ Pluto	20°22'	♎ Libra	Libra	House 8	House 10	0°47'	♐ Sagittarius
♁ Node	20°05' R	♌ Leo	Leo	House 7	House 11	20°02'	♐ Sagittarius
♇ Lilith	17°28'	♎ Libra	Libra	House 8	House 12	8°49'	♑ Capricorn
AS AS	3°03'	♒ Aquarius	Aquarius				
MC MC	0°47'	♐ Sagittarius	Sagittarius				

In keeping with the common practice, we consider that a planet posited within 1 degree of the next house belongs to that house. We allow an orb of 2 degrees for the ASC and the MC.



List of Your Active Planetary Aspects

Please find below the list of all the active inter-aspects which are interpreted in this report, in addition to your planets in sign, in house, and all your planetary dominants. Since the aspects between slow-moving planets are of a collective nature, they are not displayed, in compliance with our interpretation rules.

- ★★★★★ Sun conjunction Moon, orb 6° 31'
- ★★★☆☆ Sun semi-square Venus, orb 0° 03'
- ★★★★★ Sun conjunction Jupiter, orb 2° 34'
- ★★★★★ Sun sextile Uranus, orb 4° 47'
- ★★★☆☆ Sun square Neptune, orb 2° 28'
- ★★★☆☆ Sun sesqui-quadrant Ascendant, orb 0° 36'
- ★★★★★ Sun quintile Midheaven, orb 1° 2'
- ★★★★★ Moon conjunction Mercury, orb 5° 54'
- ★★★☆☆ Moon semi-square Mars, orb -1° 13'
- ★★★★★ Moon conjunction Jupiter, orb 3° 57'
- ★★★★★ Moon conjunction Saturn, orb 4° 36'
- ★★★★★ Moon sextile Uranus, orb -1° 44'
- ★★★☆☆ Moon square Neptune, orb -4° 03'
- ★★★★★ Mercury sextile Venus, orb -2° 3'
- ★★★★★ Mercury conjunction Jupiter, orb 9° 51'
- ★★★★★ Mercury conjunction Saturn, orb 1° 17'
- ★★★★★ Mercury trine Ascendant, orb 3° 1'
- ★★★★★ Mercury sextile Midheaven, orb 0° 54'
- ★★★☆☆ Venus square Mars, orb 5° 21'
- ★★★★★ Venus sextile Saturn, orb -3° 47'
- ★★★★★ Venus opposite Ascendant, orb -0° 39'
- ★★★★★ Venus trine Midheaven, orb -1° 35'
- ★★★☆☆ Mars square Ascendant, orb -4° 41'
- ★★★★★ Jupiter conjunction Saturn, orb 8° 34'
- ★★★☆☆ Jupiter sesqui-quadrant Ascendant, orb -1° 58'
- ★★★★★ Saturn trine Ascendant, orb 4° 27'
- ★★★★★ Saturn sextile Midheaven, orb 2° 11'
- ★★★★★ Uranus quintile Ascendant, orb -1° 11'
- ★★★★★ Uranus conjunction Midheaven, orb 8° 33'

Meaning of Stars

Stars indicate the strength of the aspects. Two solid coloured stars (there are half-stars also), mean that the aspect is powerful enough to be noticed at the first reading.

We strongly advise that you read the paragraphs displaying less than two stars later on, after you have

absorbed the full import of the other texts.

The yellow colour indicates a soothing and conciliating aspect, and the red colour, a dynamic and tense aspect. The red aspects enable you to evolve, to take action, and to learn to turn your "weaknesses" into assets through your life experiences. The yellow aspects are innate strengths on which you rely in order to grow better with the former...

Preamble

When interpreting a natal chart, the best method is to start gradually from general features to specific ones. Thus, there is usually a plan to be followed, from the overall analysis of the chart and its structure, to the description of its different character traits.

In the first part, an overall analysis of the chart enables us to figure out the personality's main features and to emphasize several points that are confirmed or not in the detailed analysis: in any case, those general traits are taken into account. Human personality is an infinitely intricate entity and describing it is a complex task. Claiming to rapidly summarize it is illusory, although it does not mean that it is an impossible challenge. It is essential to read a natal chart several times in order to absorb all its different meanings and to grasp all this complexity. But the exercise is worthwhile.

In brief, a natal chart is composed of ten planets: two luminaries, the Sun and the Moon, three fast-moving or individual planets, Mercury, Venus and Mars, two slow-moving planets, Jupiter and Saturn, and three very slow-moving planets, Uranus, Neptune and Pluto. Additional secondary elements are: the Lunar Nodes, the Dark Moon or Lilith, Chiron and other minor objects. They are all posited on the Zodiac wheel consisting of twelve signs, from Aries to Pisces, and divided into twelve astrological houses.

The first step is to evaluate the importance of each planet. This is what we call identifying the dominant planets. This process obeys rules that depend on the astrologer's sensitivity and experience but it also has precise and steady bases: thus, we can take into account the parameters of a planet's activity (the number of active aspects a planet forms, the importance of each aspect according to its nature and its exactness), angularity parameters; (proximity to the four angles, Ascendant, Midheaven, Descendant and Imum Coeli or Nadir, all of them being evaluated numerically, according to the kind of angle and the planet-angle distance) and quality parameters (rulership, exaltation, exile and fall). Finally, other criteria such as the rulership of the Ascendant and the Midheaven etc. are important.

These different criteria allow a planet to be highlighted and lead to useful conclusions when interpreting the chart.

The overall chart analysis begins with the observation of three sorts of planetary distributions in the chart: Eastern or Western hemisphere, Northern or Southern hemisphere, and quadrants (North-eastern, North-western, South-eastern and South-western). These three distributions give a general tone in terms of introversion and extraversion, willpower, sociability, and behavioural predispositions.

Then, there are three additional distributions: elements (called triplicity since there are three groups of signs for each one) - Fire, Air, Earth and Water - corresponding to a character typology, modality (or quadruplicity with four groups of signs for each one) - Cardinal, Fixed and Mutable - and polarity (Yin and Yang).

There are three types of dominants: dominant planets, dominant signs and dominant houses. The novice thinks astrology means only "to be Aries" or sometimes, for example, "to be Aries Ascendant Virgo". It is actually far more complex. Although the Sun and the Ascendant alone may reveal a large part of the character - approximately a third or a half of your psychological signature, a person is neither "just the Sun" (called the sign) nor just "the first house" (the Ascendant). Thus, a particular planet's influence

may be significantly increased; a particular sign or house may contain a group of planets that will bring nuances and sometimes weaken the role of the Ascendant, of the Sun sign etc.

Lastly, there are two other criteria: accentuations (angular, succedent and cadent) which are a classification of astrological houses and types of decanates that are occupied (each sign is divided into three decanates of ten degrees each). They provide some additional informations.

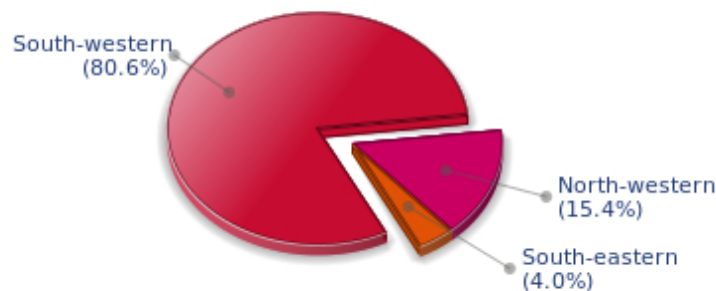
These general character traits must not be taken literally; they are, somehow, preparing for the chart reading. They allow to understand the second part of the analysis, which is more detailed and precise. It focuses on every area of the personality and provides a synthesis of all the above-mentioned parameters according to sound hierarchical rules.

As explained in the introduction of your Psychological Portrait report, minor dominants are analysed at the end of Annex 1, for purposes of clarity.

Your Planetary Repartitions

Each quadrant is a combination of the four hemispheres of your birth chart and relates to a character typology. The Southern hemisphere – the top of your chart, around the Midheaven – is associated with extraversion, action, and public life, whereas the Northern hemisphere prompts to introversion, reflexion, and private life. The Eastern hemisphere – the left part, around the Ascendant – is linked to your ego and your willpower, whereas the Western hemisphere indicates how other people influence you, and how flexible you are when you make a decision.

Your Four Quadrants

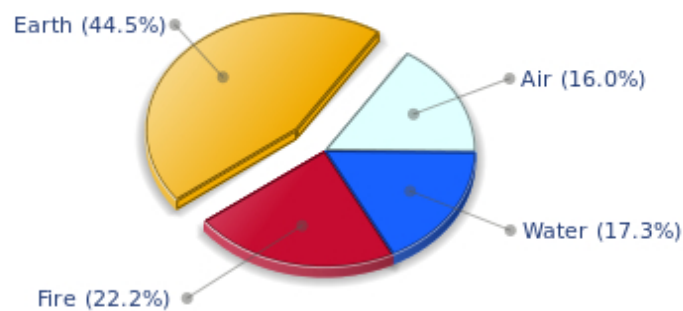


Michelle Williams, the diurnal South-western quadrant, consisting of the 7th, 8th and 9th houses, prevails in your chart: this sector brings about a thirst for communication and sometimes, a need to take risks in your dealings with others. Relations are a factor of your evolution and your transformation, which you accept serenely. Indeed, what matters to you is the movement and the energy that link you to others and that make you gain more awareness. A kind of rebellion or a desire to get away from it all is rooted in you.

Your Dominant Modes and Elements

Michelle Williams, here are the graphs of your Elements and Modes, based on planets' position and angles in the twelve signs:

Your Four Elements

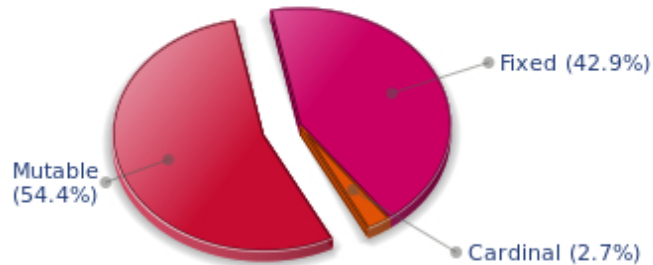


Like the majority of Earth signs, Michelle Williams, you are efficient, concrete and not too emotional. What matters to you is what you see: you judge the tree by its fruits. Your ideas keep changing, words disappear, but actions and their consequences are visible and remain. Express your sensitivity, even if it means revealing your vulnerability. Emotions, energy and communication must not be neglected; concrete action is meaningless if it is not justified by your heart, your intellect or your enthusiasm.

Michelle Williams, Fire is dominant in your natal chart and endows you with intuition, energy, courage, self-confidence, and enthusiasm! You are inclined to be passionate, you assert your willpower, you move forward, and come hell or high water, you achieve your dreams and your goals. The relative weakness of this element is the difficulty to step back or a kind of boldness that may prompt you to do foolish things.

The twelve zodiacal signs are split up into three groups or modes, called quadruplicities, a learned word meaning only that these three groups include four signs. The Cardinal, Fixed and Mutable modes are more or less represented in your natal chart, depending on planets' positions and importance, and on angles in the twelve signs.

Your Modes



The Mutable mode is the most emphasized one in your natal chart, Michelle Williams, which indicates a mobile character that is curious and thirsty for new experiences and evolution. You are lively and flexible, and you like to react quickly to solicitations, but don't confuse mobility with agitation, since this is the danger with this configuration - and with you, stagnation is out of the question. Security doesn't matter as long as you are not bored. You optimize, you change things, you change yourself... all this in a speedy way.

Your Dominants: Planets, Signs and Houses

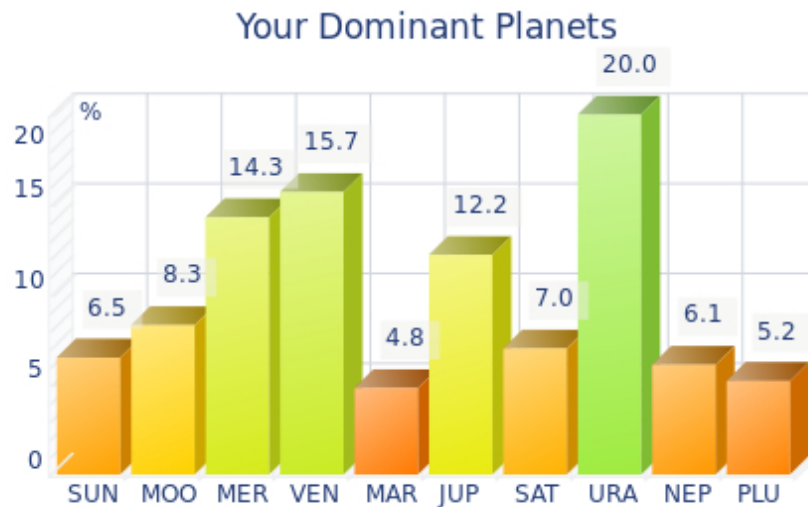
The issue of dominant planets has existed since the mists of time in astrology: how nice it would be if a person could be described with a few words and one or several planets that would represent their character, without having to analyse such elements as rulerships, angularities, houses, etc!

The ten planets - the Sun throughout Pluto - are a bit like ten characters in a role-play, each one has its own personality, its own way of acting, its own strengths and weaknesses. They actually represent a classification into ten distinct personalities, and astrologers have always tried to associate one or several dominant planets to a natal chart as well as dominant signs and houses.

Indeed, it is quite the same situation with signs and houses. If planets symbolize characters, signs represent hues - the mental, emotional and physical structures of an individual. The sign in which a planet is posited is like a character whose features are modified according to the place where he lives. In a chart, there are usually one, two or three highlighted signs that allow to rapidly describe its owner.

Regarding astrological houses, the principle is even simpler: the twelve houses correspond to twelve fields of life, and planets tenanted any given house increase that house's importance and highlight all relevant life departments: it may be marriage, work, friendship etc.

Michelle Williams, here is the evaluation diagramme for your planets:



The three planets that are most highlighted in your chart are Uranus, Venus and Mercury.

Uranus among your dominant planets: just like Neptune and Pluto, Uranian typology is less clearly defined than the so-called classical seven planets that are visible to the naked eye, from the Sun to Saturn. However, it is possible to associate your Uranian nature with a few clear characteristics: Uranus rhymes with independence, freedom, originality, or even rebelliousness and marginality, when things go wrong...

Uranus is Mercury's higher octave and as such, he borrows some of its traits of character; namely, a tendency to intellectualize situations and emotions with affective detachment, or at least jagged affectivity.

Therefore, you are certainly a passionate woman who is on the lookout for any kind of action or revolutionary idea, and you are keen on new things. Uranians are never predictable, and it is especially when they are believed to be stable and well settled that... they change everything - their life, partner, and job! In fact, you are allergic to any kind of routine, although avoiding it must give way to many risks.

With Venus among your dominant planets, one of your first reflexes is... to please! Your look, your charm, and your seduction are omnipresent elements in your behaviour.

Your approach to things is connected to your heart, and for you, no real communication can flow if your interlocutors exude no sympathy or warmth. Cold and logical reasoning, clear thoughts and good sense are not important to you: if there is no affective bond with your environment, no connection can be established with the Venusian that you are, and nothing happens.

You have a strong artistic side, and you never neglect subjective but clear concepts such as pleasure, beauty, and also sensuality. However, sometimes to the detriment of efficiency, durability, logic, and... detachment.

With Mercury among your dominant planets, you are certainly cerebral, nervous, swift, curious, quick-witted, and you love to communicate. Your psychological pattern is intellectual, all the more so since Mercury is important, with its whole set of assets but also of weaknesses, obviously.

Your sensitivity, emotions, and heart's impulses give precedence to thinking, which can lead people to believe that you are a playful and witty but heartless person, intellectualizing situations and juggling with words and numbers whilst ignoring human aspects of things. Of course, it is said that cats always land on their feet - this is your Mercurian strength and your trump card!

Your weakness lies in your nervousness, and you may miss your goal because of your "over-intellectualization" that may be detrimental to other kind of energies such as instinct, spontaneity, heart, sensitivity, etc.

Your Dominant Signs



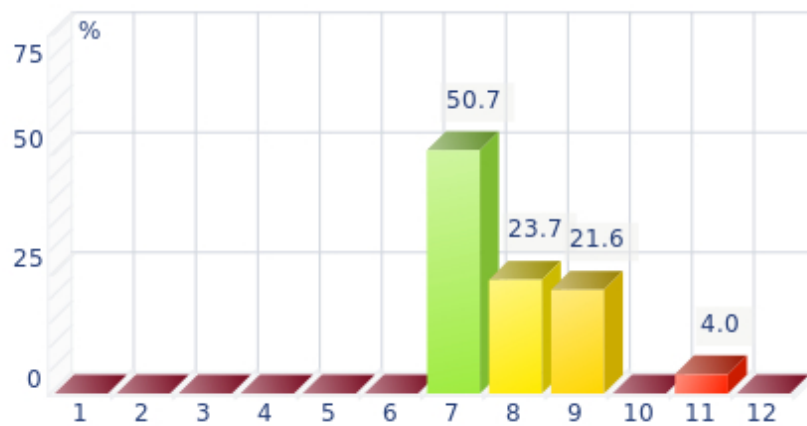
In your natal chart, the three most important signs, delineated according to the above-mentioned criteria, are, in decreasing order of strength, Virgo, Scorpio and Aquarius. They are often prominent because your Ascendant and your Sun are posited there. However, it is not always the case: it may be because they are occupied by a cluster of planets, by a planet near an angle other than the Midheaven and the Ascendant, or because two or three planets are very active and form numerous aspects from these signs. Therefore, you partly take on the three signs' characteristics, which are somehow superimposed on your natal chart, and all the more so if any of the signs in question is highlighted.

Virgo, associated with perfectionism, numbers and reason, is among your dominant signs: you inherit its sense of responsibility and tidiness, a clear mind, an unflinching logic, as well as a need to be useful and to fulfil your task to the best of your abilities. Obviously, people may think that you are too modest or reserved, suspicious or pessimistic because of your exceedingly critical mind, but aren't logic and wisdom great qualities? Of course, they are. Moreover, you keep your feet on the ground, you never behave irrationally and you are helpful and hardworking - what more can you ask for?!

With Scorpio as a dominant sign, you are a strong and astute person, complicated and passionate, sometimes destructive and intolerant, but strong-willed, tough and daring, sometimes bordering on aggressive. So many qualities and dangers combined in one person! Obviously, this often results in a natural selection of people around you: those who stand up to you or admire you and those who can't bear you anymore! But that is precisely what you want. You are what you are and you are not going to transform yourself just to please. You are too proud and you never dread confrontations, although your way of fighting is secret, as is your nature that, mysteriously enough, you are so reluctant to reveal even to your close friends who will never understand you. That said... what a hellish charm you have!

Aquarius is one of the most important signs in your natal chart: it endows your personality - at least one of its facets - with originality, to the point of eccentricity in spite of a sometimes distant and humane side. Likeable and impassive at the same time, you are a paradoxical woman, very hard to define because the two planets Uranus and Saturn blend their qualities to create the so complicated and endearing sign that inspires your character. Saturn's seriousness and impassivity is added to Uranus' rebellion, talent, individualism, charisma, extravagance, and unpredictability! One of your main characteristics is that you never open up on a personal basis, but you tend to do so easily in public. You are actually quite strange. Sexy and charming in public, despite your nice and sociable character, you could frustrate many of your admirers in private because of your impossibility to show deep and warm affection, emotions, tears... But appearance and reality are two different things anyway - you are a kind of a genius, or you have at least a tremendous charm with this sign. You have many friends and an active social life. If you are detached in your love life - only in this aspect, since the rest of chart will confirm it or not - this is no big deal!

Your Dominant Houses



Houses 7, 8 and 9 are the most tenanted ones in your natal chart. To compute their strength, planets and angles are weighed according to various astrological criteria such as swiftness, activity, angularity, rulership etc. From the analysis of the most tenanted Houses, the Astrologer deduces the fields of activity that are most relevant to you, be it because of what you are experiencing, or what you may experience in the future, or because of your deep inner motivations.

Your 7th house is one of your dominant houses: it symbolizes other people, marriages, associations, contracts, and partnerships. Your personal achievement and maybe your problems - depending on the rest of your chart - are strongly influenced by your rapports with others, the area in which you tend to commit yourself deeply. You appreciate communication, and you give importance to others' opinions. Success requires the support of others, which seems obvious and natural to you. Your marriage generally contributes to your fulfilment.

Your 8th house is very highlighted: it is the most complex house of the Zodiac. It symbolizes above all passion and transformation, which often go hand in hand. Indeed, you have a tendency to experience everything to the bitter end, and you overstep propriety borders because you want to understand everything, even what is... forbidden. This house relates to complex spheres such as sexuality, possessions and dispossessions that don't depend on you (inheritances, donations, sudden financial losses), death too - not yours in particular, so, don't worry! - and understanding of hidden or occult things: here are the fields that affect you generally, because you are naturally interested in them or

because life gets you involved in spite of yourself.

Your 9th house being one of your most tenanted house, or at least emphasized, travels and faraway places play a major role for you: travels may take place in a symbolic sense, namely mind speculations or conceptions about political matters, philosophy, religion or spirituality, or in the literal sense, such as real long distance travels by plane. You may also spend a part of your life far from home, etc. You are driven by a kind of rebelliousness, which urges you to explore the Unknown; it may also be the call of the adventure. Besides, if the rest of your chart concurs, you may be considered as a real draught, often up hill and down dale, constantly on the lookout for exciting discoveries and new, enchanting horizons.

Your Style, Behaviour, and Peculiarities

What is commonly known as "sign" indicates the position of the Sun in the Zodiac. The Sun highlights all the characteristics of the sign he tenants. According to astrology traditional rules, these characteristics are all the more pure and exact when the Sun is strong in the sign, or when the sign is particularly highlighted within the chart. Here, we indicate the pure characteristics of the sign but you must bear in mind that they may only shed a light on a particular aspect of your personality. Indeed, the sole sign of the Sun, or of the Ascendant, can never describe an astrological chart because it depends on the degree of strength of the said sign in your chart.

Another important point must be underlined. Contrary to the Ascendant, which clearly describes your appearance, your vitality, your physical constitution, your spontaneous behaviour and the image you project, your Sun sign describes your inner self, which you may not completely be aware of, and which may emerge gradually as you mature: it is about your inner personality that you reveal only to the members of your entourage whom you trust. The Sun sign is likely to be the final form of your personality, once it has evolved in line with the energies of the other parts of your chart, the beginning of which is seen in the Ascendant, your external "bark".

The Ascendant is one of the major components of your natal chart. It is the zodiacal sign that rises in the East at the very moment of your birth. To calculate it, it is therefore necessary to know your exact time of birth.

It provides with a wealth of information on your personality. It is one of the key features that allows the analysis of several parts of you, such as your appearance, your character as it is initially perceived and your immediate behaviour. It describes the external aspect of your personality which you always display, but it also describes your physical constitution in the long-term, in other words, your health.

Please be aware that, in spite of the importance of the Ascendant, the accuracy of its description depends on how strongly highlighted it is in your natal chart. We use the entire set of astrological rules to assess the strength of the Ascendant. In most cases, the Ascendant is as revealing as your "sign", i.e., the sign where the Sun is posited at the time of birth.

You were born under the sign of Virgo and your Ascendant is in Aquarius

Before broaching the details of the meaning of your Sun and your Ascendant, as a preamble, we offer a brief generic interpretation of their combination in your chart:

The first traits people notice about your Aquarius Ascendant are your optimism and your nonconformism. You are an idealist, and you always want to appear independent and open to new things, especially when they question well-established values. But this is perhaps only an outward attitude, since your Virgo Sun mistrusts unrealistic stands and considers them as cranky theories. Virgo is happy to work on its own. It progresses at a slow pace and offers its support and its help to people who seek them and deserve them. You are withdrawn but discerning, and you sometimes regret that, because of your first and uncontrolled reactions, you project an image which does not reflect what your true self is. It is difficult to access your deeper thoughts or your personal world. Indeed, each in its own fashion, these two signs seldom reveal their sensitivity and focus more on the intellectual aspect of people and

things. Virgo is more sensual and practical and prefers to show its attachment through daily caring gestures rather than through dramatic demonstrations of affection. Aquarius is successful in instilling hope in others, and it is appreciated for its solidarity, but it is reluctant to talk about itself because the words "to confide a secret" are not part of its vocabulary.

You were born with the Sun in Virgo

Psychologically speaking, your nature is nervous and secondary. Before you take action, you cautiously ponder over things and you review any possible alternative and reaction. You strive systematically to find the best possible response to any given problem. You are a perfectionist above all and you have no rest until you optimize a situation, in each and every area, be it professional, pragmatic, aesthetic or in pleasure. You do not accept spontaneity and, to fully enjoy life and go further, you consider that demanding the best is the least you can do, even though it is detrimental to the rough force associated with your instinct. The intellectual element intervenes before both the physical ones and your feelings: it is one of the essential clues to understanding your personality.

As you are born under this sign, you are cerebral, clear-sighted, focused on details and on numbers, analytic, serious, competent, reasonable, modest, tidy, organized, spruce, industrious, provident, honest, loyal, reserved, shy, helpful, willing to progress, talkative, perfectionist, logical, hardworking, tactful, patient, precise, concrete, spiritual. You can also be narrow-minded, calculating, irritating, petty, picky, hung up, anxious, cold, repressed or sarcastic.

In love, Madam, you are discreet, modest and intellectual. You may experience love only in the second part of your life if you do not make the effort to become aware that feelings and sexuality don't fare well with excessive reflection and prudence. In this area, one must not rely on reason...

Once you understand this principle, you will become the best wife, meticulous, tidy, but warm and withdrawn, caring for your family's well being and perfectly tackling your children's minor health problems. Your concern for tidiness and cleanliness allows you to have a healthy, safe and refined home.

You are fond of changes, variety and humour and you attach a special importance to your partner's comments and attentions.

You may marry twice or you may have a secret love affair, in spite of your seriousness, because Virgo is a dual sign, like Gemini, Pisces and Sagittarius.

Your Ascendant is in Aquarius

In the sentimental sphere, you are particularly sensitive to the values of friendship, in the sense that you see yourself as a link within a chain, certainly a different and original one, but with no will to flatter your ego or to individually assert yourself. On the contrary, your aim is to immerse yourself in your friendly relations and to participate in projects and ideals of the whole human community.

As you are born under this sign, you are idealistic, altruistic, detached, independent, original, surprising, gifted, contradictory, innovative, humanistic, likeable, friendly, self-confident, impassive, quiet, intuitive, creative, charitable, elusive, disconcerting, generous, tolerant, paradoxical, and you cannot stand any kind of constraint. But you may also be marginal, resigned, distant, utopian, maladjusted, eccentric and cold.

In love, Madam, you are the inquiring sign of the Zodiac. You are cerebral and lively, always on the look-out for novelty or for anything amazing.

You are often more in love with love than you are in love with your partner. You are surprising and unpredictable, now passionate and using your imaginative and mental powers to idealize your relationship and your partner, now cold, suddenly detached and impersonal because you are annoyed by subtle elements that you, and only you, can understand.

You do not stand disappointment and you display great cleverness when you want to suddenly break up when your partner least expects you to do so.

In order to be able to charm you, one must be exceptional, amazing, disconcerting and one must accept to grant you total freedom and independence. Under those conditions only, will you be able to have a long-lasting, stable yet eventful, surprising and harmonious relationship with your chosen partner. Once trust and confidence settle in, you will be fulfilled and you will be hardly recognizable.

The life span of your couple depends mainly on your common tastes: ideally, you should live with a man who actually is your friend and your lover, continuously shifting from one role to the other according to circumstances, and who, at the same time, provides you with a much needed mental stimulation, as well as with warm love.

The ruler of your chart is in Scorpio

The ruler of the Ascendant, also referred to as the chart ruler, brings a few interesting nuances to the meanings provided by the Sun and the Ascendant. The sign in which the ruler of the Ascendant is posited fine-tunes the style of personality described by the Sun and the Ascendant. It may strengthen it if the sign is identical to either of them.

The ruler of the Ascendant, Michelle Williams, is Uranus. It is posited in the sign of Scorpio and makes you appreciate mysteries and the unknown. You need to understand, to solve riddles, and to take action behind the scenes, perhaps so as to be even more efficient. Your criticising skill is a weapon, but it may also backfire on you, just like your sometimes excessive obstinacy.

Aspects to your Ascendant

Several planets form an aspect with your Ascendant, Michelle Williams. Therefore, in their specific way, they modify your behaviour and your personality, which do not take on the pure characteristics of your Aquarius Ascendant only, but which are a blend of its characteristics with those of the said aspects.

★★★★★ Venus opposite Ascendant, orb -0° 39'

Venus is in opposition to your Ascendant, Michelle Williams. This configuration is not dissonant, since it is at the same time a conjunction with the Descendant which symbolises your relationship with other people. You need to charm and to be sincerely loved, even though there may be a small gap in the way you would behave, had other people not been around. You definitely like to charm, even though to do so, you must go a bit out of your way. What seems important to you, finally, is to use this special facet indicated by Venus on the Descendant in order to earn your entourage's warm and sympathetic approval, although it requires a little effort from your part.

★★★★★ Mercury trine Ascendant, orb 3° 1'

You are endowed with quite good adaptation capacities, Michelle Williams. Thanks to Mercury, your behaviour matches your intellectual concepts, or your style of communication, which is quite an effortless one.

★★★★★ Saturn trine Ascendant, orb 4° 27'

Saturn is in soft aspect with your Ascendant, Michelle Williams. This harmonious configuration brings about a responsible, loyal, persevering, and patient behaviour, and in a word, reliable. Your seriousness is appreciated, and owing to your capacity to easily analyse situations, you come across as a sincere and trustworthy person.

★★★★★ Mars square Ascendant, orb -4° 41'

When Mars is in dissonance with the Ascendant, Michelle Williams, in some particular circumstances, it may translate into hastiness, and even hostility on your part, which your entourage may not understand. You have audacity galore, but it is up to you to show alertness, so that you don't come across as a short-tempered person unable of self-control.

★★★★★ Sun sesqui-quadrate Ascendant, orb 0° 36'

There may be a contradiction between your will and your external appearance, Michelle Williams, which slows down your natural spontaneity and in some circumstances, gives rise to doubts regarding your behaviour towards other people and the need to be true to your own beliefs. There is certainly nothing serious with this minor dissonance between the Sun and your Ascendant, only choices that are to be made, so as to remain in harmony with yourself.

★★★★★ Jupiter sesqui-quadrate Ascendant, orb -1° 58'

A dissonance between Jupiter and the Ascendant is not too serious, Michelle Williams. In some circumstances, it may cause your behaviour or your opinions to be a bit exaggerated when you are in society. Therefore, you may come across as too proud or excessive. It is up to you not to overdo, so as not to arouse your entourage's incomprehension. This excess may also translate into a marked taste for pleasures or good food...

★★★★★ Uranus quintile Ascendant, orb -1° 11'

Uranus is in soft aspect with your Ascendant, Michelle Williams. Although your behaviour is original, nonconformist, and free, it is not unpleasant. On the contrary, this facet of your personality is sometimes considered by other people as endearing and unpredictable, in the good sense of the word. One never gets bored in your company because you are often found where you are not expected, whether regarding your ideas, your lifestyle or the way you react. You possess the charm independent and free persons are endowed with!

Your Sensitivity

Your sensitivity is dominated by your reason, Michelle Williams, and you tend to analyze your emotional reactions in the slightest details, as if you wanted you hold them at bay so that they cannot overwhelm you or weaken you. Your nature is anxious, shy, you do not like to be in the forefront and you lack self-confidence. You are extremely perfectionist, you need to examine, to organize and to plan everything according to your logic. You like to help and to feel that you are useful, in your own work or through your wise and clever advice. You may also be very demanding and critical, even unbearable, because you are insistent and you find fault in everything. Learn to gain some self-confidence and do not constantly be ready to criticize...

You are dependent on your relationships for a large part, Michelle Williams, and generally, you can open up only with people you are close to. Contacts are very important for you, however, you tend to listen to the one who spoke last. In fact you are easily influenced.

You will certainly find your dream husband and you will develop a close and intense relationship with him.

You are moody and impressionable. Your relationships with your audience are always put on a pedestal and you have a tendency to constantly change your personal image according to the persons you are dealing with and the reactions you get from them.

★★★★★ Moon conjunction Jupiter, orb 3° 57'

Why should one complicate one's life if it is possible to enjoy the simple joys of the present? This harmonic Moon-Jupiter aspect indicates a cheerful nature, which earns your entourage's liking and protects the balance of your intimate life. Your sociability is supported by your desire to smoothly adhere to a group, a social or family cell. You are fond of moments where you unwind and relax. You value your daily comfort and, to preserve it, you accept to play by the rules of privacy. When this aspect dictates your attitudes, you behave like a person easy to get along with... even though your personal demands, relegated to the backseat, come up again at top speed and force you to behave more in line with your inner needs.

★★★★★ Moon conjunction Saturn, orb 4° 36'

This harmonious Moon-Saturn aspect is an element of stability for your private life. Your daily life lives up to your demands, you are totally true to yourself and logical through your very intimate behaviour. You do not choose the easy way out: on the contrary, it is in difficult situations that you are at your best. It is very unlikely that you become destabilized by trifles. This aspect indicates stability and also perfectionism. You are longing for a private life respectful of your heart of hearts and your genuine desires. Your well being is at this price, and its quest remains perpetual. Despite your reserved private behaviour, your emotions run very deep. You have a strong need for protection and for security. Your aspirations lead you towards contemplation or studies, more than towards social utilities.

★★★★★ Moon sextile Uranus, orb -1° 44'

This harmonious Moon-Uranus aspect indicates that your well being depends on the original quality of your charm and on new-ness. You are not influenced by prevailing trends and fashion. You have a personal view of what a balancing private life should be. You enjoy unexpected situations, even extravagant ones. But if you feel that your living environment hampers your freedom, you suddenly change your attitudes and your habits. Independence is your true realm. You may show an exceptional

inflexibility when your intimate life moves away from the patterns you need, deep down. Your entourage must get used to your demands and to the values you are determined to keep with all your might and on which you are uncompromising. This determination does not allow for a laid-back attitude, or an indolence that so often causes degradations. You keep your own daily rhythms under control.

★★★★★ Sun conjunction Moon, orb 6° 31'

This aspect is a strong homogeneity factor: the image you project is in conformity with your real nature and does not upset your basic balance. This is probably the cause of your feeling at ease, your consistent behaviour and your determination to remain your true self, regardless of external pressures and whatever is expected from you. At best, your will and your sensitivity are in harmony, your unconscious abilities are mobilized and controlled by your conscious will, with no imbalance. However, it is important to avoid the traps of self-satisfaction that would be harmful to your real exchanges and would lock you up in comfortable and rigid schemes. It is possible to remain natural and yet, not be content with the sole well being of those who never cheat themselves.

★★★★★ Moon square Neptune, orb -4° 03'

This Moon-Neptune dissonance wonderfully turns on the poetic soul, the exhilaration of feelings and dreams... and disturbs your practical life, as well as the management of contingencies. You do not lack inspiration but your reasons of living may be beyond your entourage's understanding! Bohemian life is pleasant but it is probable that you experience muddled situations. Your aims are noble and your intentions are very good. But you may not have the will to turn them into reality. It is important that you are wary of artificial paradises: escaping in the imaginary is not necessarily the best solution for problem solving. You are in search of an inaccessible tranquillity and you tend to procrastinate chores. Nevertheless, facts remain present and you may see that non-interventionism can only increase your difficulties. You must put an end to this vicious let-go circle. This does not imply that you have to forsake your dreams or to repress your very rich sensitivity.

★★★★★ Moon semi-square Mars, orb -1° 13'

This Moon-Mars dissonance suggests touchiness and sometimes, aggressiveness. You are irascible and very sensitive to all sorts of threats and dangers. You react very quickly, too hastily. To protect your well being, you must learn to control your mood, to coordinate your actions and to balance your opinions. You are often disturbed by plain facts: either you seek refuge in your intimate realm and refuse to face the truth or, on the contrary, you are engaged in altercations, which forbid all tranquillity. It is important that you balance these two tendencies and that you alternate moments of action with phases of carelessness and relaxation. These two attitudes are relatively irreconcilable.

Your Affectivity

In your chart, the Sun is in Virgo and Venus, in Leo. Your solar and Venusian signs agree as much as fire and water! The natural reserve of the Sun in Virgo reacts to the excited and burning character of Venus in Leo. The modesty of the former opposes the passion of the latter. This contradiction may be part of your richness but it does not facilitate the consistency of your attachments: when you love, when you give free rein to your desires and your affections, you are Leo... unyielding, passionate, demanding and extremist. You are conquering, too, even domineering. However, your Sun in Virgo does not feel too comfortable in this style. During your periods of defence and of withdrawal, love fever turns into a reasoned and organized retreat. Your behaviours may be paradoxical: you are sensitive to flatteries but

you pretend to be indifferent. You are enthusiastic when your desire is aroused, but you project a more balanced, distant and discreet image. It is necessary that your partner feel the dormant volcano that is often hidden by your will to control. Without that will, you would lose all your landmarks. The adventure is wildly alluring, but you hesitate to play the game and to indulge in frenzy, absolute and destabilizing infatuations. When the configuration is well integrated, it allows you to master various styles and to experience devouring passions... without being devoured!

You are so proud and generous, Michelle Williams, that the power of your love contains in itself your vulnerability. However, this is precisely what makes you charming and original. You are loyal and straightforward and you need to love as much as you need to be loved. Both feelings are tightly linked and there is a real danger that love is broken up by trivial misunderstandings, just because your touchiness is affected. You are demonstrative, brilliant, and even dramatic, with a legendary generosity. For you, everything is, or must be, excessive: gestures of love towards your partner, your presents, your comfort and the luxury, which marks your outings and your travels. You are physically a lion, at least, you have its sexual appetite; you are voluptuous and passionate. Flexibility is the only thing that is out of your reach, in the ways you show your love, as well as in your responses to annoying events.

Michelle Williams, your warmth and your attractiveness are at the service of your future or current marriage! In the 7th house, Venus colours the expression of your feelings with commitment, a request for reciprocation and for something concrete. Venus gives way, to a great extent, to your desire to be loved as much as to love: in the romantic field, your entire being aims at harmony, diplomacy, mind-openness so as to find, at any cost, a common ground where you can achieve your aim, that is to say a sweet idyll and, why not if it is possible, a nice marriage as an ending. Are problems arising? A disagreement? A lack of understanding? Immediately, you undertake to soothe your partner and to highlight what brings you together, while skilfully omitting anything that might harm the so much sought after harmony. Of course, this merely complacent attitude seems to allow you to progress with conviction towards your goals but there is a price to be paid. The dependency upon your couple becomes tangible. Paradoxically, anyway, you care little about that because it is just the way you are and that, worst comes to worst, you prefer to continue this constant game consisting in a kind of self-sacrifice with its fruitful benefits, rather than to push yourself to the forefront and to take the risk of being less attractive... Actually, you are never happier than when you formalize your union and there is no doubt that, once you are married, you will be a charming spouse and you will strive to make your conjugal life a pleasant one in a spirit of sharing and warmth.

★★★★★ Mercury sextile Venus, orb -2° 3'

This aspect sensitizes you to games of seduction. You like to multiply romantic undertakings, you invent new reasons to seduce or to be seduced. Although your romantic life is not a model of stability, it is full of discoveries, varied emotions, both sensual and cerebral. You know how to earn your entourage's liking through your acute sensitivity. You play around with feelings, with relationships and with love... Mercury and Venus commonly share the capacity to sensitize to human topics. Your receptivity towards others is high. Your broad-mindedness goes hand in hand with your heart's generosity. You pay particular attention to the way people look at you and the effect you make when you meet or exchange with someone. Actually, you expect a lot from others: acknowledgement of your qualities, as well as esteem and consideration. You may also be touchy beyond what you may give to think. In many instances, relationship games may turn out to be more serious than expected.

★★★★★ Sun semi-square Venus, orb 0° 03'

The Sun and Venus form a mild dissonance in your natal chart. There is nothing very serious to worry about. There is only a small gap between what you really want on the one hand, and your natural need to charm and the warmth you display on the other hand. Thus, will and affectivity are slightly out of phase, but it is most likely that you are the only one who feels it. This is a quite trivial characteristic, and you probably do not have to correct it, since it is so mild.

★★★★★ Venus square Mars, orb 5° 21'

This Venus-Mars aspect indicates a sensitivity all on edge and an impulsive character. Emotions and heart impulses cause a marked tension. Life is an affective battlefield. Love is omnipresent but often fragile: impulsiveness reigns over the realm of feelings. The object of desire may become irresistible and implacable, or the sense of confrontations prevents affective tranquillity. However, the richness of your emotional responses is to be noted: you are more inclined than others to be guided by amorous fevers and you live intense passionate experiences. Your overwhelming impressionability must be contained. Romantic people seldom enjoy tranquillity!

★★★★★ Venus sextile Saturn, orb -3° 47'

You favour deep feelings and a sincere affective life. In love, you are not content with shams or uncertain compromises. Your couple's relationship is based on mutual trust. You strive to build a lasting link, a true love that complies with your aspirations and your heart of hearts. This harmonious Venus-Saturn aspect indicates wisdom. Inexpressible truth is preferred to appearances. A love affair is an adventure, above all. Discovering the other one, step by step... any relationship takes a fundamental dimension right away. It is relevant to mention a little puff of romanticism and a passionate nature, although quite modest and reserved. You do not commit yourself thoughtlessly! This is a major asset for long lasting love. You are able to question your affective behaviour and to adjust to your significant other. You handle crises quite well and you overcome all the difficulties inherent to amorous rapports.

The Way You Take Action and Your Sexuality

Your iron will is part of your assets, Michelle Williams. It is supported by an ingenuity and a skilfulness that may turn you into a mighty and feared personality. You have the knack of spotting weaknesses in persons you deal with and you can easily hurt them with your innate propensity to drill or to test their force. You are extremely stubborn and you never let go when you are convinced that you are right. Sexually, you are potent and passionate. You are domineering and secretive, with a magnetic personality. It is safer to avoid being taken in a conflict with you because you may be very aggressive and you bear grudges. In some cases, you may also be sadistic. Your personality is as secretive as it is domineering in the areas of action and sexuality.

You may focus all your energy into your ideal, Michelle Williams, be it political, religious, ethical, moral or, under its highest form, spiritual. Several areas may be involved simultaneously.

Taking action with all your heart may reveal a definite taste for dialectics, and you will not rest until you are understood and you have earned other people's adherence. You exchange with keen pleasure. You embrace the causes enumerated above, at the exception of spirituality, as it could never be a subject for proselytism.

You are able to instinctively identify the most important element in life from a remote distance and, inevitably, it does not belong to the material plane. You are not too interested in working for the concrete realm. You aim at longer-term objectives... and even further. Your energy is deliberately, fiercely and boldly poured into the realms of the thought and the soul. You chose them all, some of them may be more futile than others, but they are all oriented towards abstraction, concepts, some of them being often more essential.

Your nature may also be more fact-oriented. In that case, you feel that the enrichment of your soul is particularly favoured when you deal with persons and environments that are alien to you: you express your capacity of action through frequent and long-distance travels so as to progress in your personal quest for knowledge.

Your Intellect and Your Communication Style

Your capacities for logic and analysis are very good, Michelle Williams, and you evaluate each and every aspect of a given situation in objective and critical ways. You are industrious, methodical, with a lot of nervous energy, you pay attention to details and you may spend lots of time in intellectual and painstaking works. Although you are articulate, you do not like to be in the forefront and you prefer to work in team rather than to take initiatives: you feel less anxious when you know what is exactly expected from you and what you need to do. You tackle problems with rationalism and you distrust imagination and intuition. You love letters as much as you love figures. Your caustic humour may destabilize your entourage who may prefer that you were less demanding and more demonstrative. Please bear in mind that not everything can be kept under control...

You need to understand, to explore the unknown, to shed light on mysteries and to immerse yourself into the hidden fields of the unconscious or the afterlife, actually, into whatever escapes you, Michelle Williams. You are not content with what seems obvious because you are on Earth to evolve and not to stagnate or remain in a mindless state and a lack of understanding.

Interestingly enough, astrology connects the spheres of death, after-life and mysteries with the spheres of other people's possessions, investments, inheritances etc. This analogy probably comes from the fact that in those two fields, everything remains inaccessible right away. It might be the reason why such mysterious topics are so attractive to you.

Your investigative mind enables you to easily express your feelings and to explain the inner mechanisms of your whole being, almost as if your own self was a specimen to study, without modesty and with the only motivation to go as far and as deeply as possible.

★★★★★ Mercury conjunction Saturn, orb 1° 17'

Your vision of the world is rigorous and objective. An exemplary logic characterizes your mental attitude and your human relations. Your discerning faculties overlook no detail. You need to know the whys of your life and to explore the backstage of your surrounding world. The deepness of your relations dismisses superficial connections. It may be the reason why your interest is aroused when you are in touch with elements that are alien to your mode of functioning. You have the soul of a researcher, regardless of the form that your investigations may take. It may be an exacerbated curiosity for human topics or a will to understand relationship stakes. It may also be a hobby or a course of study that

introduces you to a riddle. It does not matter! Life is a perpetual quest for the unknown. Your critical mind is highly developed and you take commonplaces for granted only after thorough consideration.

★★★★★ Moon conjunction Mercury, orb 5° 54'

Curiosity is part of your nature. You perceive everything with sharp acuity. You increase your attempts to establish connections and to exchange opinions and information, particularly when you are in a familiar and intimate context. When this configuration is well integrated, it underlines the multi-faceted nature of the mobility that defines your behaviour and your living conditions and endows you with strong adaptation abilities. You also show a remarkable gift for improvisation and you pick up the quality of the atmosphere so swiftly that you get off any tricky situations. However, you must keep your adaptation capacity under control because when it is overdeveloped, it may become an agent for instability.

★★★★★ Mercury conjunction Jupiter, orb 9° 51'

You display strong abilities for adaptation, social insertion and various learning capacities. You are credited with an acute sense of relations, probably because you can speak other people's language. You easily assimilate the most varied settings and your qualities are acknowledged. Your attitude and the words you use have the power to seduce and to convince your entourage. Diplomacy is an asset in your game. You are fit for negotiation and you seek compromise solutions. The only danger may be that sometimes, you too readily accept agreements that turn out to be less positive than foreseen, after a while. This is the other side of the coin for your exceptional flexibility and your unquestionable tact.

Your Goals, Motivations, Career, and Destiny

Your Sun is posited in the 7th House

To assert yourself, Michelle Williams, you cannot rest until you multiply your contacts. Although you do not consciously understand your ambition early in life, you need to shine through your relationships.

It may take the form of a tendency to rapidly get involved in associations, groups or clubs; you feel fine as soon as people are around you because your communication skills are always highlighted and appreciated; your style is not what matters most because your main concern is to be noticed as soon as you are in contact with the world.

You are meant for marriage, the ultimate form of association. Usually, your destiny is dependent on your marriage, either directly through its consequences on your career and your lifestyle, or indirectly and, in the long run, through the supports and help you may gain, particularly owing to your honesty and your assertive skills. Marriage constitutes the apotheosis of your ambitions. As you unconsciously understand it, your entire will strives to achieve this aim since your adolescence. You have the required flexibility and talent to turn the life of your couple into daily harmony.

This area is only one of the facets of the fields where you positively exercise your will but... you do so with so much strength and talent!

With this configuration, everything seems all roses. However, it is not as simple and easy as it may look: your will to shine through others and your almost frantic search for contact may hide a fear of solitude and a lack of self-confidence. Why would you constantly seek confirmation of your own worth into other

people's eyes if it were not to dispel your own doubts?

You are easily influenced and your apprehension about loneliness and not being up to it may cause troubles and out-of-proportion reactions; struggles, conflicts of authority or even lawsuits may be harmful. You often get over them because your determination to show that you are at your best is stronger than anything else.

Your challenge is to manage to please others and to conceal your domineering and too assertive side: however, do not make too much effort because, in all cases, you will be equally appreciated. Remember that it's better to let well alone!

The ruler of your chart is in the 9th House

The ruler of the Ascendant, also referred to as the chart ruler as explained in a previous chapter, is also posited in one of the twelve Houses of the chart. Just like the Sun in his House, the ruler of the Ascendant provides certain abilities, or it makes you appreciate more keenly certain areas of life.

The ruler of your chart is in the 9th House, Michelle Williams. This position often gives you a strong taste for travels and foreign matters, whether through frequent real trips, or symbolically, through the pleasure to devote yourself to noble subjects: politics, religion, spirituality, or sciences. You feel the constant need to reach a higher level and to be on the move.

Aspects influencing your ambitions

Regarding your destiny or your career, the following aspects of your natal chart allow to fine-tune what has just been said above:

★★★★☆ Sun conjunction Jupiter, orb 2° 34'

This harmonious Sun-Jupiter aspect indicates an optimistic background that usually wins the entourage's adherence. It also suggests ambition and generosity and favours social integration and success. The desire to earn general consideration prompts you to display energy, joviality and benevolence. However, opportunism may be the other side of the coin. As you strive to win everyone's esteem, you may fall into disrepute. It is important that you remain clear-sighted so as to persistently pursue your long-term aims without believing that you should always « grab each and every opportunity ». However, this aspect remains an element of success because it allows you to adjust your objectives to the context, to whatever the situation offers or, on the contrary, to force your way through events and to achieve your ideals.

★★★★☆ Venus trine Midheaven, orb -1° 35'

In your natal chart, Michelle Williams, sweet Venus is in soft aspect with your Midheaven. It means that your natural charm and the way you express your feelings are appreciated in society. Usually, this configuration speeds up the achievement of your professional goals, or in any case, of a certain social status. A female - or females - may prove helpful for your career or your destiny.

★★★☆☆ Sun square Neptune, orb 2° 28'

If this Sun-Neptune dissonance is not well integrated, it may bring about confusions and errors of judgment. It is the signature for Don Quixote in search of chimera, pursuing impossible dreams. Your intuitions may lead to an incorrect estimation of facts. Bohemian life is certainly pleasant. But it is often

necessary to remain realistic, lest to be exposed to delusions. Carelessness and letting-go is not suitable. In order to properly integrate this aspect, you must control the possible drift of a wandering and fabulous sensitivity. This aspect favours poetic and romantic inspiration. But you must not let it rule your concrete actions. It is important to allow your intuitive capacities to be fully expressed while keeping a lucid mind, simultaneously.

★★★★☆ Mercury sextile Midheaven, orb 0° 54'

Mercury in soft aspect to your Midheaven enables you to easily communicate with your entourage and to climb up the social ladder, Michelle Williams. Your strategy is often good, and you correctly think about your interests. Do not change anything!

★★★★☆ Saturn sextile Midheaven, orb 2° 11'

Thanks to this soft aspect between Saturn and your Midheaven, your long-term efforts and your perseverance are rewarded, and you gradually climb up the stairs of success. Time is your ally as far as your career and social destiny are concerned. Carry on the good work, and rest assured that your seriousness and your obstinacy are appreciated. They are instrumental in your success, especially during the second part of your life.

★★★★☆ Uranus conjunction Midheaven, orb 8° 33'

Uranus is in conjunction with your Midheaven, Michelle Williams. This very important aspect usually indicates a destiny which, in some rare life occurrences, takes most surprising twists. Like trans-Saturnian planets, out of the blue and beyond free will events occur by accident, as if they were caused by some sort of fatality. Thus, it is possible that your life changes its course completely and repeatedly, in a more than above average way, when transits and progressions activate your Uranus-Midheaven conjunction. Uranus stands for life upheavals, surprise, rebellion, freedom, and nonconformism. Whether it indicates inner needs or external events, which is the most frequent case, your destiny is very likely to be deeply disrupted, especially when transiting Uranus forms major aspects with your natal Midheaven (towards the ages of 21, 28, 42; 56, 63, and 84). Uranus' half-return (around the age of 42), is the most important one. It is also possible that your career or social destiny takes a stronger Uranian tone, with tight connections to modernity, space, astrology and out-of-the ordinary subjects, as well as physics, electricity, speed, etc.

★★★★☆ Jupiter conjunction Saturn, orb 8° 34'

Jupiter and Saturn are favourably linked to each other in your natal chart. The Tradition indicates that this planetary aspect is a good omen for your social success and good integration in the society. Indeed, Jupiter stands for public life, respect for laws and hierarchy, and acceptance of established rules, whereas Saturn symbolises wisdom, time, seriousness, and perseverance. Therefore, it is only logical that with this Jupiter - Saturn configuration, your career, or your social destiny if you do not work, is well thought of by society, and that you are most likely to experience its happy outcomes sooner or later.

★★★★☆ Sun sextile Uranus, orb 4° 47'

This aspect reinforces the determination as well as the will to further your original, sometimes revolutionary, ideas and designs. Your capacity of innovation is important for your image. You have the soul of a leader. You display a forceful and synthesizing mind. You may tend to oversimplify or to schematize situations. In most cases, you know where you are heading to and how to reach your goals. Your determination is two-edged... not everybody will appreciate your contrasted standpoints. It is yes or no, black or white! This planetary configuration indicates certainties. When it comes to acting

according to your inner motivations and to respecting your models, you can show an unusual willpower and sweep aside all obstacles lying on your path.

★★★★★ Sun quintile Midheaven, orb 1° 2'

In the professional and social status areas, Michelle Williams, you know what you want, and you know how to cleverly obtain it. Because the Sun and your Midheaven are in agreement in your natal chart, you have no qualms and no hesitations when it comes to defining the strategy for reaching your goal.

Your Assets and Your Part of Joviality

The major asset of the planet of Greater Fortune in your chart, Michelle Williams, is the increase of your practical sense and of your capacity to create order in your surroundings. You progress easily in your activities, and in most cases, you are efficient, useful and cautious. The danger may be that you do not put yourself at the forefront to reap the rewards of your efforts, especially if the rest of your chart indicates a tendency for introversion or a lack of self-confidence.

With this planetary position, Michelle Williams, your natural benevolence is greatly favoured in your dealings with others. Jupiter in the 7th house is usually considered... to be one of the best possible indications for a successful marriage and a springboard for your social life! Your feelings are generously expressed, and your company is pleasant.

The planet Jupiter symbolizes expansion, broadness and generosity. Jupiter is associated with the functions of synthesis, enthusiasm and optimism. In your natal chart, his house position is more important than his sign position because, like Saturn, Uranus, Neptune and Pluto, he is a slow planet. Many people born in the same period have Jupiter in the same sign. This is the reason why the sign occupied here is less meaningful than when it is occupied by the so-called fast planets, i.e. the Sun, the Moon, Mercury, Venus and Mars. Therefore, some caution is to be exercised as you read what follows.

Jupiter in Virgo gives you a talent for work, for practical activities and a higher than average dexterity. You have a strong sense of duty. You are very appreciated in your work environment because you are a perfectionist. The Tradition underlines that all the fields related to health and physical wellbeing are favoured.

Your Serious Side

Your concentration power and your control over your instincts increase as you mature. You become more methodical, analytical, and tidy, although you lose some degree of lightness and joviality.

Sooner or later, death and its environment – inheritances, successions, investments, sorrows, or detachment – are areas you will have to deal with, not necessarily in a negative way, Michelle Williams. Besides, the Tradition believes that this configuration gives longevity, if other aspects do not strongly state otherwise.

In the affective and sexual spheres, you do not easily grant your confidence, and you need to work on your inhibitions so as to overcome your own fears. Provided you display a strong will, Saturn, as the

planet of time, allows you to consider these areas with grace. They become sources of pleasure and joy, under the condition that... you put aside your serious side, precisely. This is likely to occur after your first experiences have taken place.

The planet Saturn symbolizes contraction, effort, time, limitation and concentration. Saturn eliminates anything that is not authentic, sooner or later. It is impossible to cheat him as he gives an irresistible desire to form a coherent whole with oneself, in responsible and wise ways. He is the great purifier. He represents our limitations but also our truth. In your natal chart, the house position where Saturn is posited is more important than his sign position because, like Jupiter, Uranus, Neptune and Pluto, he is a slow planet. Many people born in the same period have Saturn in the same sign. This is the reason why the sign occupied here is less meaningful than when it is occupied by the so-called fast planets, i.e. the Sun, the Moon, Mercury, Venus and Mars. Therefore, some caution is to be exercised as you read what follows.

Saturn in Virgo gives you a persevering and precise nature. This good combination increases your taste for sciences and for effort and you are constantly striving to improve yourself. Your tenacity works wonders.

A Few Special Points

Your Uniqueness and Your Utopias

Your ideas and revolutionary concepts, at odds with what really exists, make you appear as a pioneer in your area. In your concrete life, several important trips are significantly involved in major turning points. Your instinctive need for strangeness, as well as your thirst for independence, must be given a positive outlet.

Sometimes, your positions are original to the point that they become marginal, and your dyed-in-the-wool desire for expatriation exposes you to undergo reversals that are as explosive as unexpected. More than anyone else, you must guard against fanaticism or the systematic exploration of remote and dangerous lands, even though the call of the unknown or of exoticism is deeply rooted in you and you find it hard not to respond!

On a more symbolic plane, you are generally interested in abstract topics which are out of the ordinary such as metaphysics, religions, sociology, philosophy, etc.

Your Inspiration and Your Illusions

As soon as you are within a group or you are involved in a project, your attitude becomes quite peculiar. Instead of asserting yourself and differentiating yourself, you strive to completely merge into the group because you do not intend to impress or to be set apart. The danger may be that you lose your identity or that you are abused and deceived by the group, or by one of your friends who is a group member.

In general, because of your feelings and your strong intuition, you have a good capacity to become integrated and to slowly gain self-confidence in group settings.

The same holds true for your friendship life. You tend to fuse, to be totally devoted, and to adjust with flexibility to your friends' personality. However, it is hard for you to assert yourself, and you may wrongly be considered as lacking in conviction, although not a weak person.

Your Passion and Your Authority

In the sexuality area, you are very creative and you fear nothing. You are willing to experience your fantasies to the very end because you need to understand life's most secretive and mysterious aspects.

You are usually interested in occultism and in all topics that go beyond the everyday life framework: death and after-death, parapsychical researches, etc. You have a strong sixth sense and you intuitively understand at once things that are usually hidden and private.

Your material life may be disrupted by inheritances and gains stemming from happy speculations. In the most negative cases, you undergo huge losses that are difficult to understand. In all cases, these upheavals are meant to transform your personality and your approach to life.

Your Isolated Planets

In general, the ten planets of the chart are connected to other planets by major or minor astrological aspects. It is owing to those ties that the planets' energies can manifest in the chart owner's personality and play out within safeguards according to a specific tonality.

It seldom happens that in a natal chart, a planet is totally disconnected from the nine other planets.

Astrologers have observed that when such a case occurs, the person feels the energy of the unaspected planet in quite a singular way, very jerky and powerful at the same time. Thus, for instance, the famed astrologer Jean-Baptiste Morin de Villefranche wrote that "an unaspected planet heralds that something strange or extraordinary will take place regarding the meanings of the house in which the said planet is posited" (source : l'astrologie selon Morin).

Rules for detecting an unaspected planet: among all the testimonies that we have reviewed to this day, based on our experience, we tend to agree with American astrologer Janis Huntley who accepts seven aspects, which involve the zodiacal twelve sections of 30 degrees. The aspects to be considered are the conjunction (0 degree, cooperation or tension), the semi-sextile (30 degrees), the sextile and the trine (60 and 120 degrees respectively, aspects of cooperation), the square and the opposition (90 and 180 degrees respectively, tensed aspects), and the quincunx (150 degrees, slightly tensed). In this detection, the chart's angles are not taken into account.

In any case, it is important to remember that an isolated planet clearly expresses its influence when it is a personal planet. Thus, when the Sun, the Moon, Mercury, Venus, or Mars is isolated, it is certain that the effects described by Jean-Baptiste Morin de Villefranche will become manifest. As for Jupiter, Saturn, Uranus, Neptune, and Pluto, one must be cautious because the volume of cases documented is not yet large enough.

Your chart has no isolated planet, and this particular case does not apply to you.

Annex 1: Your Minor Dominants

The five following dominants are less significant than those described at the beginning of your report. They may not be strongly felt. In some cases, they add several minor details to the analysis of your character, but they are rather for curiosity purposes. It is not necessary to take them into account when you first read your portrait.

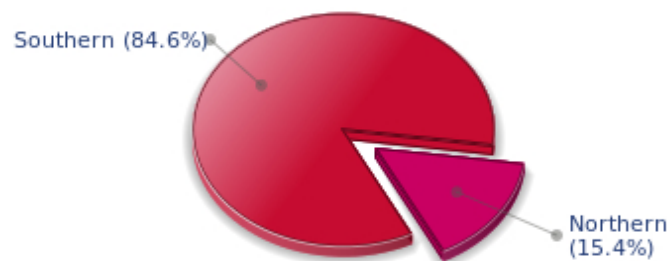
Your Planetary Repartitions: Northern, Southern, Eastern and Western Hemispheres

The axis linking the 1st house's cuspid (the Ascendant) to the 7th house's cuspid - the Descendant - divides the zodiac into two bowls, a superior bowl, in the South, and an inferior bowl in the North. Quoting an expression by the famous American astrologer Rudhyar, the Southern part and the Northern part correspond to two functions: "being" and "doing". Other concepts are also associated with this North and South distribution, such as introversion - Northern hemisphere - and extraversion - Southern hemisphere - being or appearances, inner life or external life, reflection or action, dreaming one's life or living one's dreams, the abstract or the concrete, backstage or limelight.

This is not about determination but about personal inclination: thus, some people will be thrown into public life despite a prominent Northern hemisphere. If this happens, however, it will not be due to their will, their taste or their deep nature. Conversely, a prominent Southern hemisphere will not bring about a famous destiny to its owner, even if he tends to turn the spotlight on himself, or if he looks for a more active life. It is a matter of deep nature and natural inclination. Of course, none of the typologies is "superior" to another.

In your birth chart, Michelle Williams, the ten main planets are distributed as follows:

Your Northern and Southern Hemispheres



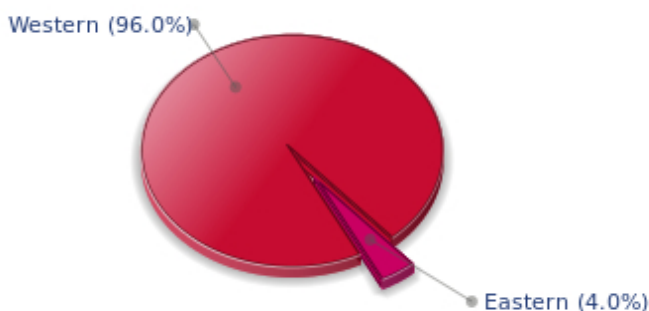
Michelle Williams, the predominance of planets in the Southern hemisphere prompts you to take action, to draw attention on yourself, and to make your actions and what you have in mind visible to everyone. Sometimes, without giving a single thought to, and to the detriment of, a richer inner life and a deeper and wiser reflection. Action and communication are inevitable in your opinion and you tend to think that the only thing that matters is what is seen! This is not always true, and it is up to you to progress through the development of inner qualities such as meditation, solitude and imagination so as to become stronger.

The birth chart is divided into two other parts, Eastern and Western, by the axis linking the Midheaven to the Imum Coeli.

The Eastern part, on the Ascendant side, shows the person's ego, will, magnetism, and vitality, whereas the Western part, on the Descendant side, symbolizes other people, communication, relationships and their influence, as well as flexibility and adaptability.

Michelle Williams, here is the planetary repartition in your Eastern and your Western hemispheres:

Your Eastern and Western Hemisphere:



The predominance of planets in the Western hemisphere of your chart means that you are quite flexible, capable of empathy, convivial and communicative. An excellent factor for many professional activities or for your social or sentimental life for example.

A definite asset... provided that you are not at the centre of the decisions you must take in your life: you may be tempted to listen to the last person who spoke, and your flexibility won't always get you out of the tight spot. You are therefore advised to learn to decide alone and to cope with the consequences of your actions with courage and without regrets. This attitude will allow you to combine flexibility and action, adaptability and absence of hesitation.

Your Yin and Yang Polarity

The twelve signs are divided into two polarities, called active or passive, or sometimes masculine and feminine, positive and negative, Yang and Yin. This classification corresponds to two quite distinct tonalities, the first one bringing extraversion, action, self-confidence and dynamism, the second one, introversion, reactivity, reflection and caution. None is superior to the other, each group has its own assets and shortcomings. Odd signs - Aries, Gemini, Leo, Libra, Sagittarius and Aquarius - belong to the first group, whereas even signs - Taurus, Cancer, Virgo, Scorpio, Capricorn and Pisces - belong to the second group.

Your Yin and Yang Polarity



According to the disposition and qualities of your planets and angles, you are rather influenced by Yin energy, the passive polarity, Michelle Williams: you are quite introverted, imaginative and sometimes discreet, but you are a deep and wise person who is not content with just noisy and flashy things. At times, you doubt but you think that those who don't are a bit... thoughtless. Allow yourself to take more laid-back attitudes and put your reserve aside, because good equilibrium is always healthier.

Your Houses' Accentuations

Houses are split up into three groups: angular, succedent and cadent.

The first ones are the most important ones, the most "noticeable" and energetic houses. They are the 1st, 4th, 7th and 10th houses. Their cusps correspond to four famous angles: Ascendant for the 1st house, Imum Coeli for the 4th house, Descendant, opposite the Ascendant, for the 7th house and Midheaven for the 10th house, opposite the Imum Coeli.

Planets are evaluated according to a whole set of criteria that includes comprehensive Western astrology rules. At their turn, planets emphasize specific types of houses, signs, repartitions etc., as previously explained.

Your Houses' Accentuations



Your angular houses, namely, the 1st, 4th, 7th and 10th houses, are very emphasized in your chart, Michelle Williams: according to the Tradition, they are the strongest and most dynamic houses. Should the rest of your chart concur, angular houses suggest that you are an enterprising, energetic and assertive woman. Indeed, angular houses are said to generate impulsions and to give a powerful and domineering personality.

Unusual fates are often linked to a predominance of angular houses, but this is only a partial indication...

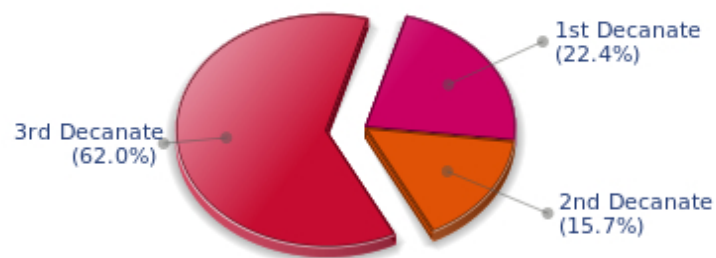
Your Esoteric Decanates

Each sign contains 30 degrees and can be divided into three equal parts: the decanates. The Tradition indicates that specific meanings can be associated to each of the three decanates. Their sphere of activity is usually limited to the Sun sign, however, it is even more interesting to observe the distribution of all the planets in the chart to get an idea of the respective importance of the three decanates, which can complement the description of the personality.

These meanings must be considered with the greatest caution. Indeed, they are minor characteristics that can only underline other outstanding traits of character.

Traditionally, the first decanate highlights the characteristics of the sign where a planet is located. The two other decanates correspond to sub-dominant planets, depending on the nature of each sign. This system leads to a multiplication of meanings and it is impossible to have a clear understanding: here, we prefer to give only the meaning of one decanate in comparison with the other two, within the birth chart as a whole. Again, the greatest caution is needed with regard to this minor indication as it is not always reliable: it is not essential that you read these texts in the beginning. You can get back to them later on, once you have read more important interpretations

Your Esoteric Decanates



The third decanate, which means the part between 20° and 30° of any zodiacal sign, prevails in your natal chart, Michelle Williams. It contains the degrees of spirituality, traditionally more delicate to deal with, since they incline towards evolution and therefore, destabilizations. Individuals with an emphasised third decanate may have a deeper sensitivity than most people, which often brings about ordeals, but also spiritual rewards.

Annex 2: Karmic Study

The karmic theme is a good complement to the psychological portrait, or natal chart. This analysis is based on the positions of the Lunar Nodes, the Black Moon and the Part of Fortune: they are also called fictitious points and describe the spiritual purpose of your destiny. Because there is in all of us an experience and a quest, our life is an evolutionary journey... provided that we head towards the right direction, of course! Indian astrologers highly prize the Nodes axis (North Node and South Node). It is the Ariadne's thread that we are invited to follow. The Black Moon indicates the sector where we are most likely to transform or to transcend, whereas the Part of Fortune points out the area where we can easily express our specificity.

The Lunar Nodes: a spiritual path

Lunar Nodes have their roots in the Indian tradition and they are based on a simple concept: each of us have a mission of their own, here on earth, a destiny, a course. According to the Indian philosophy, life is a school: the nodal axis describes our past experiences (South Node, our karma, our spiritual inheritance or our previous lives), and our aims on earth (North Node, our Dharma, the purpose of our current incarnation). This is the reason why the study of the lunar nodes is called "Karmic astrology". Here, we shall not step into hypothetical past lives. Wherever our current trends may come from, all that really matters is that we become aware of the purpose of our life, its finality and our dharma. We are likely to understand our life purpose around the age of 37, when the Lunar Nodes return to their natal position.

You make friends easily and you earn your entourage's confidence and esteem. Very early, you develop an acute sense of fraternal relations, generously receiving and giving. This spirit of mutual aid may lead to a happy-go-lucky attitude that may border on carelessness... As you rely too heavily on friendship, there may be a danger to undergo a few setbacks: idealism and spontaneous dedication may meet with ungrateful reactions or the indifference of the very persons whom you try to help. Your destiny is probably marked with a quest of individual achievement. It is of utmost importance that you create, that you beget a fruit, a work or a child. Little by little, you become independent, without selfishness, but with the strength of those who know that they can only rely on themselves. Do not hesitate to live your dreams to the end and to engender, over and over again. Creation, whatever its form, is the path to your fulfilment. You slowly discover the pleasure to design as you please, without outside interference. It is important that you find an area for your personal expression and, as the poet says, "before the eyes, constantly, night and day, either a great labour or a great love".

During the first part of your life, you manifested an acute sense of challenge, a taste for personal initiatives and an unflinching fighting spirit: these qualities prove helpful in handling any possible setback today. However, you must make an effort to accept your entourage and adopt more open and accommodating attitudes! Life teaches that you must become more sociable and develop the flexible behaviour that you lack. Do not play around with mavericks; It is important that you earn your close friends' affection and that you rely on their collaboration. You slowly become more aware of other people's reasons, of their desires and their concerns. Your destiny may be influenced by relationships. If you had a tendency to provoke people or events, now you have gained complementary qualities: diplomacy and human tact, cleverness in the art of reconciling opposite views. It is true that it required a huge personal effort!

Lilith or the Dark Moon

The Black Moon is the spark of refusal and distance that is dormant in all of us. Depending on the sign where she is found in your chart, she highlights the desire to transform and to sublimate a part of your life. The Black Moon is unfathomable and mysterious. She gives a different dimension to the sector she touches. Her manifestations are subtle; nonetheless, she is powerful, implacable, demanding to the extreme... The Black Moon is also called Lilith. She is the inner flame of your heroism and insubordination.

You decidedly assert yourself as a person made of desires, love and the absolute. If this configuration is not well controlled enough, your thirst for timeless relationships may hamper simple, natural and obvious affairs. You may reject persons whose attitudes do not perfectly live up to your expectations. However, as you keep on looking for your hero, it is very likely that you will find the person to whom fate has relentlessly tied you.

This configuration predisposes to the quest of the absolute on two accounts: firstly, the very nature of the Black Moon, implacable and extremist, and secondly, she is in a sector of the Zodiac that is traditionally evolutionary but extremist. Here, you flirt with death, danger and challenge. Everything suggests transformation, abandonment and revival, passion and cruelty. There is no half-measure in your behaviour, only a terrifying and marvellous thirst for the absolute... That'll take some doing for the person who will experience it with required intensity!

The Part of Fortune in House

The Part of Fortune is a very ancient fictitious point that depends on the lunar phase at the time of birth. The astrological house tenanted is particularly strengthened. In your chart, the Part of Fortune is in the 1st house: you aspire to be in full control of yourself. Your wealth is within... early in life you develop the taste for individual initiatives and you find your full balance as you give new impulses to people and things. You are the initiator, the eternal starter. Like all the persons born at the new moon, you have a very personal way of handling life.

Conclusion

A few remarks are needed here in order to allow you to fully take advantage of your astrological portrait: firstly, do not forget that a birth chart is also a photograph of the sky at birth and a structure that not only contains the personality's characteristics, but also its potential evolution.

We all know that, in real life, people begin to know themselves when they are in their forties, or even later. Likewise, several traits of character in a portrait may seem surprising: in most cases, it means that such features are not yet developed.

Some personalities reveal themselves late in life, whereas others are more precocious. It must be remembered that psychological structures are in a state of continuous evolution because they are influenced by unfolding events and gradual maturity. We can never underline strongly enough the "mobile" nature of the personality, throughout a lifetime.

On the other hand, it is difficult to discriminate what is "already present" at this moment in your life when you are reading your chart's interpretation, from what will appear later in the logic of your evolution: you must sort out all the pieces of information provided and, in most cases, you will see that your astrological portrait is helpful for your endeavours to know yourself better.

Finally, several readings of an astrological portrait are usually necessary in order to absorb all its different meanings and to evaluate the relevance of each character trait.

In any case, better self-knowledge obviously contributes to faster personal blossoming, and it is undoubtedly one of astrology's major roles: contributing to know oneself better, in order to improve more rapidly, to deal with one's weaknesses and to avoid its drawbacks, and to take advantage of one's assets as efficiently as possible.
