



**Mark Ruffalo's  
Astrological Portrait**





## Mark Ruffalo's Astrological Portrait



<b>Introduction</b>	<b>2</b>
<b>Your Planets, Houses, Aspects, and Natal Chart</b>	<b>4</b>
<b>Preamble</b>	<b>7</b>
<b>Your Planetary Repartitions</b>	<b>8</b>
<b>Your Dominant Modes and Elements</b>	<b>9</b>
<b>Your Dominants: Planets, Signs and Houses</b>	<b>10</b>
<b>Your Style, Behaviour, and Peculiarities</b>	<b>15</b>
<b>Your Sensitivity</b>	<b>19</b>
<b>Your Affectivity</b>	<b>20</b>
<b>The Way You Take Action and Your Sexuality</b>	<b>21</b>
<b>Your Intellect and Your Communication Style</b>	<b>23</b>
<b>Your Goals, Motivations, Career, and Destiny</b>	<b>24</b>
<b>Your Assets and Your Part of Joviality</b>	<b>28</b>
<b>Your Serious Side</b>	<b>28</b>
<b>A Few Special Points</b>	<b>29</b>
<b>Your Isolated Planets</b>	<b>30</b>
<b>Annex 1: Your Minor Dominants</b>	<b>32</b>
<b>Annex 2: Karmic Study</b>	<b>36</b>
<b>Conclusion</b>	<b>38</b>





## Mark Ruffalo's Astrological Portrait

### Introduction

To fully benefit from this portrait, we suggest that you read its introduction and its preamble carefully, and then that to take the time to soak up the interpretations of each chapter. Given the large number of texts, which mirrors the human being's complexity, you may need to go through the contents several times, so as to get a good grasp of their meaning and to know yourself better. This will reward your patience.

The purpose of this report is to describe your psychological portrait and to highlight the most fundamental features on the personal area. The report begins with the analysis of your planetary dominants and outlines your personality's general traits before going into further detail. Minor dominants are analysed at the end of Annex 1, for purposes of clarity. Your report then delineates the various facets of your personality:

In general, even when relationships are not involved, we express ourselves and we feel according to our character and our personal motivations: this is indicated by the Ascendant and the Sun sign which both give details on the way we function. They shed a tremendously important light which allows to figure out your personality. Here, we describe your Sun sign (your inner self), your Ascendant (your behaviour as seen by others), and the ruler of the Ascendant (interesting additional pieces of information about the style of your personality). These descriptions alone cover nearly a third or a half of your psychological signature, depending on your natal chart characteristics.

Then, we address your sensitivity, or in other words, the way you receive things and how you express your emotions ; it works as a constant filter for all your exchanges, even when it becomes a more secondary element in your amorous relationship, because at that moment, affectivity prevails. Sensitivity is the way you perceive things, it is your radar, your daily mood, and at the same time, it indicates how you react to your entourage, on a daily basis. It is what others immediately see of you. In the second paragraph, we explain in which areas of life your sensitivity and your emotions are strongest, therefore, where you are most vulnerable.

After this, it is your affectivity, the way you love and how you charm, that comes into play as soon as you fall in love: the first part indicates its basic structure or its main form. The second part describes the areas where it is best expressed and how you display it, according to your personality.

A third fundamental area deals with your mode of action and your sexuality: how you behave, how you manage to obtain what you want, what kind of desires you have. There are twelve possibilities, very

different from one another. The study discloses the specific one that applies to you. In the second paragraph, we explain in which life areas you may most efficiently take advantage of your capacity for action and for conquest.

Your ways of communicating and of thinking are obviously among the major elements that must be integrated into the delineation and the description of your personality. Indeed, they influence your general behaviour and may modify or enhance the image your project (for instance, extraversion may “compensate” a weak affectivity, but a huge number of cases are possible). An additional chapter indicates the favourite areas where you enjoy communicating, thinking and meeting with people.

Besides, we analyze an even more personal aspect that is important to define and understand what may occur within your couple: each of us have a centre of interest, a privileged manner to be fulfilled or to achieve our destiny; this main motivation is indicated by the positions of your Sun and your chart ruler in the astrological houses and we provide you with its detailed description.

A natal chart contains the potential for specific fulfilment and a whole range of assets, protections and qualities. How does the lucky factor manifest in your personality? In which area can you best exploit your qualities? The answers are precisely revealed to you in this chapter.

On the other hand, we all feel in us a part of vulnerability, doubts and fears. How does this part of solemnity or serious side play out? How is it possible to handle it in order to evolve and to get rid of useless elements? All this information is provided to you in these two paragraphs.

Then, you can discover three additional traits of your personality that must be considered as secondary ones. They deal with your predispositions, which means that they need to be triggered by external events because they are not influenced by your will; let's call it a part of fate. Please, bear in mind that your destiny can unfold only in accordance with what you are: therefore, even if they belong to your more unconscious self, these characteristics are parts of you, definitely.

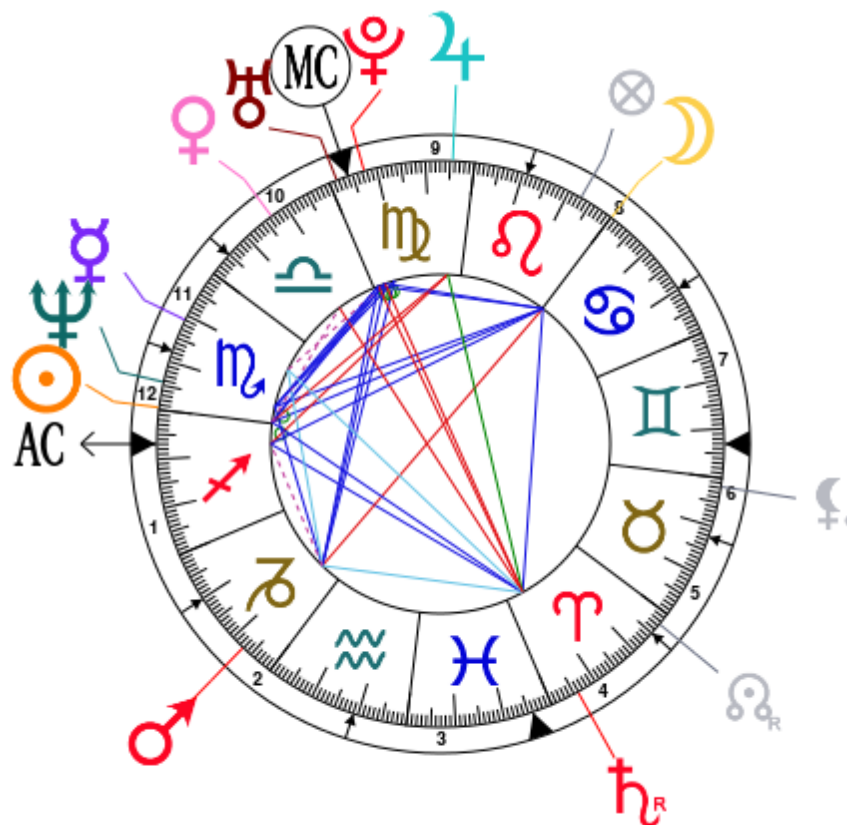
The karmic chart complements the psychological portrait or natal chart. It is based on the positions of the Lunar Nodes, the Black Moon, and the Part of Fortune. These elements of the chart, sometimes referred to as fictitious points, provide information about the spiritual meaning of your destiny. Owing to the fact that we all have in us acquired knowledge and the urge to go on a quest, our life is an evolutionary journey... However, these texts must be read with great caution: this is the reason why you will find this analysis in the Annex 2 of your report.

# Your Planets, Houses, Aspects, and Natal Chart

Mark Ruffalo, born November 22, 1967, at 07:33 AM, Kenosha (Kenosha), Wisconsin [87.49W ; 42.35N ; 6W00]

Natal Planets				In House	Natal Houses (Placidus)	
☉ Sun	29°33'	♏ Scorpio	House 12	House 1	6°56'	♐ Sagittarius
☾ Moon	29°53'	♋ Cancer	House 8	House 2	10°03'	♑ Capricorn
☿ Mercury	11°00'	♏ Scorpio	House 11	House 3	19°04'	♒ Aquarius
♀ Venus	13°29'	♎ Libra	House 10	House 4	25°57'	♓ Pisces
♂ Mars	22°52'	♑ Capricorn	House 2	House 5	25°06'	♈ Aries
♃ Jupiter	4°27'	♍ Virgo	House 9	House 6	17°46'	♉ Taurus
♄ Saturn	5°54' R	♈ Aries	House 4	House 7	6°56'	♊ Gemini
♅ Uranus	28°23'	♍ Virgo	House 10	House 8	10°03'	♋ Cancer
♆ Neptune	24°17'	♏ Scorpio	House 12	House 9	19°04'	♌ Leo
♇ Pluto	22°33'	♍ Virgo	House 9	House 10	25°57'	♍ Virgo
♁ Node	27°27' R	♈ Aries	House 5	House 11	25°06'	♎ Libra
♇ Lilith	28°14'	♉ Taurus	House 6	House 12	17°46'	♏ Scorpio
AS AS	6°56'	♐ Sagittarius				
MC MC	25°57'	♍ Virgo				

In keeping with the common practice, we consider that a planet posited within 1 degree of the next house belongs to that house. We allow an orb of 2 degrees for the ASC and the MC.



## List of Your Active Planetary Aspects

Please find below the list of all the active inter-aspects which are interpreted in this report, in addition to your planets in sign, in house, and all your planetary dominants. Since the aspects between slow-moving planets are of a collective nature, they are not displayed, in compliance with our interpretation rules.

- ★★★★★ Sun trine Moon, orb -0° 19'
- ★☆☆☆☆ Sun semi-square Venus, orb 1° 04'
- ★☆☆☆☆ Sun square Jupiter, orb -4° 53'
- ★★★★★ Sun trine Saturn, orb 6° 2'
- ★★★★★ Sun sextile Uranus, orb 1° 1'
- ★★★★★ Sun conjunction Neptune, orb 5° 16'
- ★★★★★ Sun conjunction Ascendant, orb 7° 22'
- ★★★★★ Sun sextile Midheaven, orb 3° 36'
- ★★☆☆☆ Moon opposite Mars, orb -7'
- ★★★★★ Moon trine Saturn, orb -6° 01'
- ★★★★★ Moon sextile Uranus, orb -1° 29'
- ★★★★★ Moon trine Neptune, orb -5° 35'
- ★★★★★ Moon trine Ascendant, orb 7° 02'
- ★★★★★ Moon sextile Midheaven, orb -3° 55'
- ★★★★★ Mercury quintile Mars, orb -0° 08'
- ★★★★★ Mercury bi-quintile Saturn, orb 0° 53'
- ★★☆☆☆ Mercury semi-square Midheaven, orb 0° 03'
- ★★☆☆☆ Venus opposite Saturn, orb -7° 35'
- ★★★★★ Mars quintile Saturn, orb 1° 01'
- ★★★★★ Mars trine Uranus, orb -5° 3'
- ★★★★★ Mars sextile Neptune, orb -1° 24'
- ★★★★★ Mars trine Pluto, orb 0° 19'
- ★☆☆☆☆ Mars semi-square Ascendant, orb 0° 56'
- ★★★★★ Mars trine Midheaven, orb -3° 04'
- ★☆☆☆☆ Jupiter inconjunction Saturn, orb -1° 27'
- ★★★☆☆ Jupiter square Ascendant, orb 2° 28'
- ★★★★★ Saturn trine Ascendant, orb -1° 01'
- ★☆☆☆☆ Saturn opposite Midheaven, orb -9° 57'
- ★★★★★ Uranus conjunction Midheaven, orb 2° 25'
- ★★★★★ Neptune sextile Midheaven, orb -1° 39'
- ★★★★★ Pluto conjunction Midheaven, orb 3° 24'

## Meaning of Stars

Stars indicate the strength of the aspects. Two solid coloured stars (there are half-stars also), mean that the aspect is powerful enough to be noticed at the first reading.

We strongly advise that you read the paragraphs displaying less than two stars later on, after you have absorbed the full import of the other texts.

The yellow colour indicates a soothing and conciliating aspect, and the red colour, a dynamic and tense aspect. The red aspects enable you to evolve, to take action, and to learn to turn your "weaknesses" into assets through your life experiences. The yellow aspects are innate strengths on which you rely in order to grow better with the former...

## Preamble

When interpreting a natal chart, the best method is to start gradually from general features to specific ones. Thus, there is usually a plan to be followed, from the overall analysis of the chart and its structure, to the description of its different character traits.

In the first part, an overall analysis of the chart enables us to figure out the personality's main features and to emphasize several points that are confirmed or not in the detailed analysis: in any case, those general traits are taken into account. Human personality is an infinitely intricate entity and describing it is a complex task. Claiming to rapidly summarize it is illusory, although it does not mean that it is an impossible challenge. It is essential to read a natal chart several times in order to absorb all its different meanings and to grasp all this complexity. But the exercise is worthwhile.

In brief, a natal chart is composed of ten planets: two luminaries, the Sun and the Moon, three fast-moving or individual planets, Mercury, Venus and Mars, two slow-moving planets, Jupiter and Saturn, and three very slow-moving planets, Uranus, Neptune and Pluto. Additional secondary elements are: the Lunar Nodes, the Dark Moon or Lilith, Chiron and other minor objects. They are all posited on the Zodiac wheel consisting of twelve signs, from Aries to Pisces, and divided into twelve astrological houses.

The first step is to evaluate the importance of each planet. This is what we call identifying the dominant planets. This process obeys rules that depend on the astrologer's sensitivity and experience but it also has precise and steady bases: thus, we can take into account the parameters of a planet's activity (the number of active aspects a planet forms, the importance of each aspect according to its nature and its exactness), angularity parameters; (proximity to the four angles, Ascendant, Midheaven, Descendant and Imum Coeli or Nadir, all of them being evaluated numerically, according to the kind of angle and the planet-angle distance) and quality parameters (rulership, exaltation, exile and fall). Finally, other criteria such as the rulership of the Ascendant and the Midheaven etc. are important.

These different criteria allow a planet to be highlighted and lead to useful conclusions when interpreting the chart.

The overall chart analysis begins with the observation of three sorts of planetary distributions in the chart: Eastern or Western hemisphere, Northern or Southern hemisphere, and quadrants (North-eastern, North-western, South-eastern and South-western). These three distributions give a general tone in terms of introversion and extraversion, willpower, sociability, and behavioural predispositions.

Then, there are three additional distributions: elements (called triplicity since there are three groups of signs for each one) - Fire, Air, Earth and Water - corresponding to a character typology, modality (or quadruplicity with four groups of signs for each one) - Cardinal, Fixed and Mutable - and polarity (Yin and Yang).

There are three types of dominants: dominant planets, dominant signs and dominant houses. The novice thinks astrology means only "to be Aries" or sometimes, for example, "to be Aries Ascendant Virgo". It is actually far more complex. Although the Sun and the Ascendant alone may reveal a large part of the character - approximately a third or a half of your psychological signature, a person is neither "just the Sun" (called the sign) nor just "the first house" (the Ascendant). Thus, a particular planet's influence



may be significantly increased; a particular sign or house may contain a group of planets that will bring nuances and sometimes weaken the role of the Ascendant, of the Sun sign etc.

Lastly, there are two other criteria: accentuations (angular, succedent and cadent) which are a classification of astrological houses and types of decanates that are occupied (each sign is divided into three decanates of ten degrees each). They provide some additional informations.

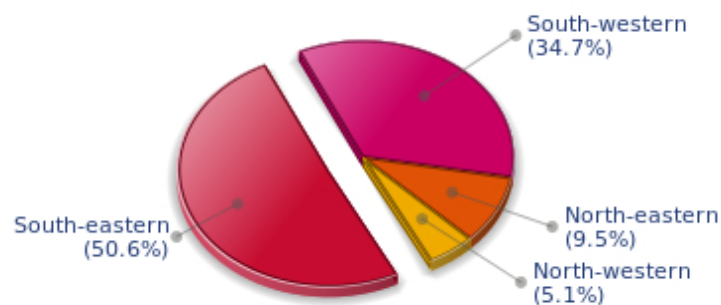
These general character traits must not be taken literally; they are, somehow, preparing for the chart reading. They allow to understand the second part of the analysis, which is more detailed and precise. It focuses on every area of the personality and provides a synthesis of all the above-mentioned parameters according to sound hierarchical rules.

As explained in the introduction of your Psychological Portrait report, minor dominants are analysed at the end of Annex 1, for purposes of clarity.

## Your Planetary Repartitions

Each quadrant is a combination of the four hemispheres of your birth chart and relates to a character typology. The Southern hemisphere – the top of your chart, around the Midheaven – is associated with extraversion, action, and public life, whereas the Northern hemisphere prompts to introversion, reflexion, and private life. The Eastern hemisphere – the left part, around the Ascendant – is linked to your ego and your willpower, whereas the Western hemisphere indicates how other people influence you, and how flexible you are when you make a decision.

### Your Four Quadrants

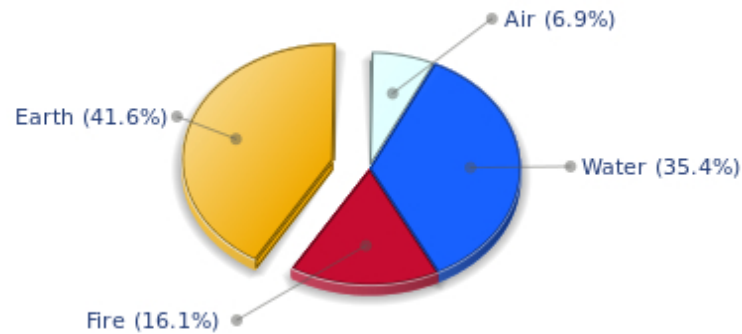


Mark Ruffalo, the diurnal South-eastern quadrant, consisting of the 10th, 11th and 12th houses, prevails in your chart: assertion and goals achievement are at the centre of your concerns. You are very keen to implement your dreams and your plans. You achieve your ambitions as soon as possible, whether through an active social life, highly charged friendly relations, or an urge to take actions in order to reap - in the eyes of the world, of course - the rewards of your dynamism. It is likely that spirituality or humanitarian actions are part of your motivations, sometimes at the price of some degree of isolation.

## Your Dominant Modes and Elements

Mark Ruffalo, here are the graphs of your Elements and Modes, based on planets' position and angles in the twelve signs:

### Your Four Elements



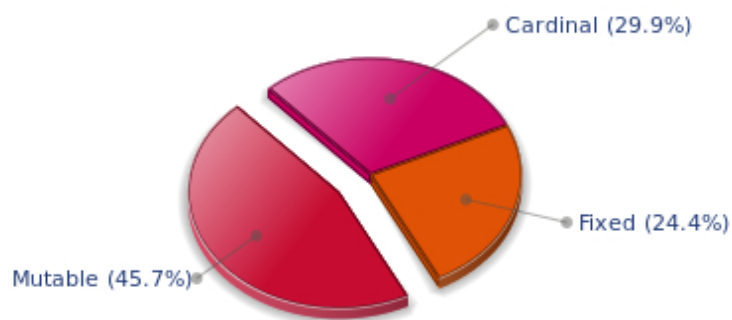
Like the majority of Earth signs, Mark Ruffalo, you are efficient, concrete and not too emotional. What matters to you is what you see: you judge the tree by its fruits. Your ideas keep changing, words disappear, but actions and their consequences are visible and remain. Express your sensitivity, even if it means revealing your vulnerability. Emotions, energy and communication must not be neglected; concrete action is meaningless if it is not justified by your heart, your intellect or your enthusiasm.

The predominance of Water signs indicates high sensitivity and elevation through feelings, Mark Ruffalo. Your heart and your emotions are your driving forces, and you can't do anything on Earth if you don't feel a strong affective charge (as a matter of fact, the word "feeling" is essential in your psychology). You need to love in order to understand, and to feel in order to take action, which causes a certain vulnerability which you should fight against.

Air is under-represented in your natal chart, with only 6.89% instead of the average 25%. Air symbolizes the values of communication, exchanges with others, but also adaptability and flexibility abilities: if you don't get out of your cocoon to talk, to show interest in others, and to socialize, you may have problems understanding others. Because of your lack of flexibility or of your refusal to adapt yourself, you may be suddenly overwhelmed by events. You should get into the habit of talking, of phoning, and of thinking in terms of "mobility, flexibility, adaptability, change" in every circumstance. It will spare you so many troubles!

The twelve zodiacal signs are split up into three groups or modes, called quadruplicities, a learned word meaning only that these three groups include four signs. The Cardinal, Fixed and Mutable modes are more or less represented in your natal chart, depending on planets' positions and importance, and on angles in the twelve signs.

## Your Modes



The Mutable mode is the most emphasized one in your natal chart, Mark Ruffalo, which indicates a mobile character that is curious and thirsty for new experiences and evolution. You are lively and flexible, and you like to react quickly to solicitations, but don't confuse mobility with agitation, since this is the danger with this configuration - and with you, stagnation is out of the question. Security doesn't matter as long as you are not bored. You optimize, you change things, you change yourself... all this in a speedy way.

## Your Dominants: Planets, Signs and Houses

The issue of dominant planets has existed since the mists of time in astrology: how nice it would be if a person could be described with a few words and one or several planets that would represent their character, without having to analyse such elements as rulerships, angularities, houses, etc!

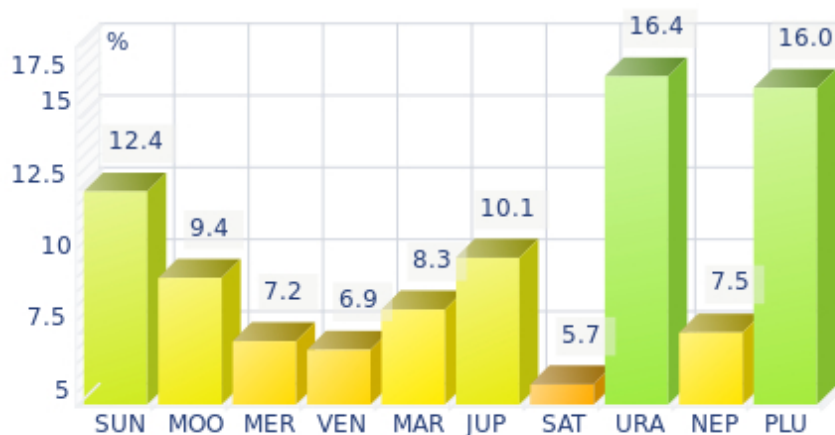
The ten planets - the Sun throughout Pluto - are a bit like ten characters in a role-play, each one has its own personality, its own way of acting, its own strengths and weaknesses. They actually represent a classification into ten distinct personalities, and astrologers have always tried to associate one or several dominant planets to a natal chart as well as dominant signs and houses.

Indeed, it is quite the same situation with signs and houses. If planets symbolize characters, signs represent hues - the mental, emotional and physical structures of an individual. The sign in which a planet is posited is like a character whose features are modified according to the place where he lives. In a chart, there are usually one, two or three highlighted signs that allow to rapidly describe its owner.

Regarding astrological houses, the principle is even simpler: the twelve houses correspond to twelve fields of life, and planets tenanted any given house increase that house's importance and highlight all relevant life departments: it may be marriage, work, friendship etc.

Mark Ruffalo, here is the evaluation diagramme for your planets:

## Your Dominant Planets



The three planets that are most highlighted in your chart are Uranus, Pluto and the Sun.

Uranus is among your dominant planets: just like Neptune and Pluto, Uranian typology is less clearly defined than the so-called classical seven planets that are visible to the naked eye, from the Sun to Saturn. However, it is possible to associate your Uranian nature with a few clear characteristics: Uranus rhymes with independence, freedom, originality, or even rebelliousness and marginality, when things go wrong...

Uranus is Mercury's higher octave and as such, he borrows some of its traits of character; namely, a tendency to intellectualize situations and emotions with affective detachment, or at least jagged affectivity.

Therefore, you are certainly a passionate man who is on the lookout for any kind of action or revolutionary idea, and you are keen on new things. Uranians are never predictable, and it is especially when they are believed to be stable and well settled that... they change everything - their life, partner, and job! In fact, you are allergic to any kind of routine, although avoiding it must give way to many risks.

With Pluto as a dominant planet in your chart, you are a magnetic and mighty predator, like the Scorpio sign ruled by this planet, who needs to exert pressure on others in order to "test" them. You are always ready to evolve, to risk destruction for reconstruction - including your own - to live more intensely whilst imposing your secret authority on things and on people you encounter.

You may come across as wicked, cruel or too authoritarian, but actually you only follow your instinct, you sound people out, and you like to exert your domination simply because your vital energy is too powerful to remain inside. You are inclined to be passionate, with hidden motivations. You are sometimes misunderstood but one of your great Plutonian assets is to go successfully through each life ordeal with ever growing strength.

One of the dominant planets in your natal chart is the Sun. He symbolizes will, magnetism, sense of honour and dignity. You are a Solar being, and you often display charismatic and leadership qualities. Your warmth and your persuasive power lead you far away from pettiness. You enjoy thinking big and, consequently, you move forward according to what you decide.

Your Solarian weakness may be related to the sin of pride or to excessive authority. The frontier between pride and vanity is tenuous: be careful not to overstep it and to keep the nobleness of heart that is part of your charm.

### Your Dominant Signs



In your natal chart, the three most important signs, delineated according to the above-mentioned criteria, are, in decreasing order of strength, Virgo, Scorpio and Sagittarius. They are often prominent because your Ascendant and your Sun are posited there. However, it is not always the case: it may be because they are occupied by a cluster of planets, by a planet near an angle other than the Midheaven and the Ascendant, or because two or three planets are very active and form numerous aspects from these signs. Therefore, you partly take on the three signs' characteristics, which are somehow superimposed on your natal chart, and all the more so if any of the signs in question is highlighted.

Virgo, associated with perfectionism, numbers and reason, is among your dominant signs: you inherit its sense of responsibility and tidiness, a clear mind, an unflinching logic, as well as a need to be useful and to fulfil your task to the best of your abilities. Obviously, people may think that you are too modest or reserved, suspicious or pessimistic because of your exceedingly critical mind, but aren't logic and wisdom great qualities? Of course, they are. Moreover, you keep your feet on the ground, you never behave irrationally and you are helpful and hardworking - what more can you ask for?!

With Scorpio as a dominant sign, you are a strong and astute person, complicated and passionate, sometimes destructive and intolerant, but strong-willed, tough and daring, sometimes bordering on aggressive. So many qualities and dangers combined in one person! Obviously, this often results in a natural selection of people around you: those who stand up to you or admire you and those who can't bear you anymore! But that is precisely what you want. You are what you are and you are not going to transform yourself just to please. You are too proud and you never dread confrontations, although your way of fighting is secret, like your nature that, mysteriously enough, you are so reluctant to reveal even to your close friends who will never understand you. That said... what a hellish charm you have!

Sagittarius, an adventurous and conquering fire sign, is dominant in your chart: you are enthusiastic, enterprising, optimistic, very sociable, and mobile - you have itchy feet, both physically and mentally. Nobody gets bored with you because you are always planning things and suggesting excursions, at least... when you are around and not already gone on a trip! Obviously, so many movements for one man may scare people off, and some of them may even criticize your brutality or your tendency to loose your

temper, but you are so warm and genuine, so expansive, isn't this a good thing? And all the more so, since your sense of humour is overwhelming...

### Your Dominant Houses



Houses 9, 12 and 10 are the most tenanted ones in your natal chart. To compute their strength, planets and angles are weighed according to various astrological criteria such as swiftness, activity, angularity, rulership etc. From the analysis of the most tenanted Houses, the Astrologer deduces the fields of activity that are most relevant to you, be it because of what you are experiencing, or what you may experience in the future, or because of your deep inner motivations.

Your 9th house being one of your most tenanted house, or at least emphasized, travels and faraway places play a major role for you: travels may take place in a symbolic sense, namely mind speculations or conceptions about political matters, philosophy, religion or spirituality, or in the literal sense, such as real long distance travels by plane. It may also be that you spend a part of your life far from home, etc. You are driven by some kind of rebelliousness, which urges you to explore the Unknown; it may also be the call of the adventure. Besides, if the rest of your chart concurs, you may be considered as a real draught, often up hill and down dale, constantly on the lookout for exciting discoveries and new, enchanting horizons.

The 12th house is emphasized in your chart: like the 8th house, it has a rich and complex meaning. Although its bad reputation is likely to scare most readers in the first place - it is indeed the house of hidden or isolated places, of solitude, of ordeals or enemies - it can also mean that a part of your life is very deep and intense. If your achievements are not visible in the public eye, you may fulfil yourself in a different but equally important way: you may be involved in secret activities, humanitarian causes, and projects in favour of disadvantaged people. You are likely to work in quiet and remote places. In many cases, you will gain from these hidden activities as many treasures as people who have a more public destiny. It may be because you sublimate your work, or only because you successfully carry out your task within your environment. There is no such things as a good or a bad house, because each area of life is necessary in its own way, and we need all of them, if we are to improve spiritually.

With a prominent 10th house, your destiny's achievement may be very notable: the 10th house represents your career, your public life, and your ambitions. A good deal of your energy may thus be used to successfully implement what you have in mind. Instinctively, you are very keen to make your dreams come true. Sooner or later, you will deal with the public, and your personal achievement will go through

trials and ordeals: other people and visible actions.

## Your Style, Behaviour, and Peculiarities

What is commonly known as "sign" indicates the position of the Sun in the Zodiac. The Sun highlights all the characteristics of the sign he tenants. According to astrology traditional rules, these characteristics are all the more pure and exact when the Sun is strong in the sign, or when the sign is particularly highlighted within the chart. Here, we indicate the pure characteristics of the sign but you must bear in mind that they may only shed a light on a particular aspect of your personality. Indeed, the sole sign of the Sun, or of the Ascendant, can never describe an astrological chart because it depends on the degree of strength of the said sign in your chart.

Another important point must be underlined. Contrary to the Ascendant, which clearly describes your appearance, your vitality, your physical constitution, your spontaneous behaviour and the image you project, your Sun sign describes your inner self, which you may not completely be aware of, and which may emerge gradually as you mature: it is about your inner personality that you reveal only to the members of your entourage whom you trust. The Sun sign is likely to be the final form of your personality, once it has evolved in line with the energies of the other parts of your chart, the beginning of which is seen in the Ascendant, your external "bark".

The Ascendant is one of the major components of your natal chart. It is the zodiacal sign that rises in the East at the very moment of your birth. To calculate it, it is therefore necessary to know your exact time of birth.

It provides with a wealth of information on your personality. It is one of the key features that allows the analysis of several parts of you, such as your appearance, your character as it is initially perceived and your immediate behaviour. It describes the external aspect of your personality which you always display, but it also describes your physical constitution in the long-term, in other words, your health.

Please be aware that, in spite of the importance of the Ascendant, the accuracy of its description depends on how strongly highlighted it is in your natal chart. We use the entire set of astrological rules to assess the strength of the Ascendant. In most cases, the Ascendant is as revealing as your "sign", i.e., the sign where the Sun is posited at the time of birth.

## You were born under the sign of Scorpio and your Ascendant is in Sagittarius

Before broaching the details of the meaning of your Sun and your Ascendant, as a preamble, we offer a brief generic interpretation of their combination in your chart:

You are a born adventurer! Your Scorpio Sun urges you to live your experiences to the very end, and even, to get involved in desperate straits... Owing to your Sagittarius Ascendant, you come across as an idealist and a bon viveur who is a bit intrusive. Indeed, the constant agitation which Sagittarius brings about may be irritating, not to mention the fact that it is never where it is expected to be! Whether you are willing to reach Scorpio's dark abysses or Sagittarius' faraway glimmering stars, you seldom content yourself with a status quo. As a Scorpio Sun, you sometimes regret your hasty and incisive remarks, which are so typical of Sagittarius, because you usually prefer not to draw attention on you. Indeed, you reveal the secretive and tortured nature of your Scorpio Sun only after people have experienced your ardour tinged with optimism which characterises Sagittarius. Nevertheless, these signs share the same



passionate involvement in relationships, which is more selective and discerning for Scorpio, and more open and demonstrative for Sagittarius.

### **You were born with the Sun in Scorpio**

Psychologically speaking, your nature is bilious, with aggressive impulses that lead you towards the transformation of your entire being and, continuously, of the situation surrounding you. You seem to be constantly struggling for your self-assertion. You cannot refrain from testing others with cutting remarks, not because you want to hurt them, but because you want to know them better through their reaction; for you, life and the feeling of aliveness are experienced through rebellion and tension. You may be manipulative and your aggressive attitude may equate with sly inquisition. You often remain silent, introverted and secretive, mulling over turbulent thoughts in the depths of your mind, leaving others puzzled by your somewhat peculiar behaviour.

As you are born under this sign, you are secretive, powerful, domineering, enduring, intuitive, assertive, charismatic, magnetic, wilful, daring, clear-sighted, passionate, creative, independent, vigorous, generous, loyal, hard-working, persevering, indomitable, possessive, shrewd, stubborn, ambitious, instinctive, tenacious, sexual, sexy, proud, intense and competitive. But you may also be aggressive, destructive, stubborn, anxious, tyrannical, perverse, sadistic, violent, self-centered, complex, critical, cruel, nasty, jealous, calculating, vulnerable and dissembling.

In love, Sir, you are very magnetic, with a discreet and indefinable charm that inevitably attracts the persons you set your heart on. You detect their weaknesses so well that you can, at will, exert your powers and your manipulation tendencies over them. There are no negative consequences, as long as things go well, because you are very sensual, charming, possessive and swaggering and you make happy all the people who look for this domineering aspect in their partner. However, when things start to deteriorate, your almost pathological jealousy and your capacity to harm when you feel threatened are the causes of your partners' tears.

For you, passion means tension and tragedy. It is the price to be paid for sharing your sexuality loaded with unlimited fantasies, male ardour, loyalty and generosity. You are excessive, but very endearing, and your partner finds it very hard to leave you. It is preferable when things are fine between you.

### **Your Ascendant is in Sagittarius**

Psychologically speaking, your nature is extroverted and independent, oriented towards expansion and sociability. You have the soul of a leader, energetic and active. Your charisma and your drive are fully integrated into the collective life. Indeed, as an action-oriented fire sign, you challenge yourself and you succeed in accomplishing the task straight away. Sagittarius is hard to follow because his spirit and his independent mind constantly prompt him to go further and higher.

As you are born under this sign, you are charismatic, fiery, energetic, likeable, benevolent, tidy, jovial, optimistic, extroverted, amusing, straightforward, demonstrative, charming, independent, adventurous, straightforward, bold, exuberant, freedom-loving. But you may also be irascible, selfish, authoritarian, inconsistent, unfaithful, brutal, unreliable, reckless, tactless or unpleasant.

In love, Sir, you are the mobile fire that consumes everything in your way. You are constantly in love, you are passionate and your energy and your extroversion create a love life that could fit a serialized novel:

mobile and changing, you are not the man of a single woman, at least until you find the person who resists you and who arouses a love powerful enough to tame you.

Your need for freedom and independence is so strong that it is difficult for you to settle down. Many break-ups are caused by a feeling of smothering, when your love of the moment becomes too demanding. However, since you are also unstable, you often patch up as if nothing had happened and you will be forgiven: this paradox comes from your explosive mixture comprising ardour, energy, benevolence and fickleness.

Similarly to the way in which you run your business, you will settle down when you reach your forties or your fifties. You become a good husband and a good father, well acquainted with the rules of your society, full of contentment and joy. Your home will provide the room you need so that you do not feel imprisoned.

### **The ruler of your chart is in Virgo**

The ruler of the Ascendant, also referred to as the chart ruler, brings a few interesting nuances to the meanings provided by the Sun and the Ascendant. The sign in which the ruler of the Ascendant is posited fine-tunes the style of personality described by the Sun and the Ascendant. It may strengthen it if the sign is identical to either of them.

The ruler of the Ascendant, Mark Ruffalo, is Jupiter. In the sign of Virgo, it turns you into a cautious and rational person, sometimes to the detriment of your feelings. You like to improve yourself, and you pay a great deal of attention to details. You respect the rules, and you appreciate well-done work. However, you may lack self-confidence or you may hesitate, perhaps because you hate to make mistakes, since you believe that truth is a major quality.

### **Aspects to your Ascendant**

Several planets form an aspect with your Ascendant, Mark Ruffalo. Therefore, in their specific way, they modify your behaviour and your personality, which do not take on the pure characteristics of your Sagittarius Ascendant only, but which are a blend of its characteristics with those of the said aspects.

★★★★★ Saturn trine Ascendant, orb -1° 01'

Saturn is in soft aspect with your Ascendant, Mark Ruffalo. This harmonious configuration brings about a responsible, loyal, persevering, and patient behaviour, and in a word, reliable. Your seriousness is appreciated, and owing to your capacity to easily analyse situations, you come across as a sincere and trustworthy person.

★★★☆☆ Jupiter square Ascendant, orb 2° 28'

A dissonance between Jupiter and the Ascendant is not too serious, Mark Ruffalo. In some circumstances, it may cause your behaviour or your opinions to be a bit exaggerated when you are in society. Therefore, you may come across as too proud or excessive. It is up to you not to overdo, so as not to arouse your entourage's incomprehension. This excess may also translate into a marked taste for pleasures or good food...

★★★★★ Sun conjunction Ascendant, orb 7° 22'

The conjunction of the Sun with the Ascendant represents the perfect fusion of will and vitality, and will and external appearance, Mark Ruffalo. This conjunction indicates an above average charisma or magnetism. Moreover, there is a concentration of energy which enables you to naturally shine and attract, as well as to move mountains provided... you decide to do so!

★★★★★ Moon trine Ascendant, orb 7° 02'

Your instinct seldom misleads you, as far as your external appearance is concerned, thanks to the Moon's soft aspect with your Ascendant, Mark Ruffalo. You keep your emotions under rather good control, in instinctive and smooth ways.

★★★★★ Mars semi-square Ascendant, orb 0° 56'

When Mars is in dissonance with the Ascendant, Mark Ruffalo, in some particular circumstances, it may translate into hastiness, and even hostility on your part, which your entourage may not understand. You have audacity galore, but it is up to you to show alertness, so that you don't come across as a short-tempered person unable of self-control.

## Your Sensitivity

Affectivity and intuition are very developed, Mark Ruffalo, and you are very sensitive to your environment. You “feel” atmospheres, moods and other people's emotions and when you capture negative influences, a feeling of ill-being immediately overwhelms you, all the more so because your lively imagination may destabilize you as it amplifies your receptiveness. Your nature is anxious and you tend to worry for your entourage. You strive to offer them a reassuring family atmosphere, the much needed comforting and warm sort of cocoon where you can laze around, at will. Because you care so much for your family, they may think that you are intrusive and that you try to rule their life through subtle affective blackmail. Trust them... and also learn to have more confidence in yourself!

Mark Ruffalo, your emotions are intense, even violent sometimes. You feel things and react with so much strength that it may torment you! On the other hand, you are extremely intuitive, warm, imaginative and you possess a kind of indefinable charm full of density and mystery. Your sharply developed intuition endows you with a predisposition to clairvoyance.

Matters linked to death and inheritances, family investments etc., may play an important role in your destiny. Your mother often has a prominent role and may strongly influence your major life decisions until you become an adult.

### ★★★★★ Sun trine Moon, orb -0° 19'

This aspect is a strong homogeneity factor: the image you project is in conformity with your real nature and does not upset your basic balance. This is probably the cause of your feeling at ease, your consistent behaviour and your determination to remain your true self, regardless of external pressures and whatever is expected from you. At best, your will and your sensitivity are in harmony, your unconscious abilities are mobilized and controlled by your conscious will, with no imbalance. However, it is important to avoid the traps of self-satisfaction that would be harmful to your real exchanges and would lock you up in comfortable and rigid schemes. It is possible to remain natural and yet, not be content with the sole well being of those who never cheat themselves.

### ★★★★★ Moon sextile Uranus, orb -1° 29'

This harmonious Moon-Uranus aspect indicates that your well being depends on the original quality of your charm and on new-ness. You are not influenced by prevailing trends and fashion. You have a personal view of what a balancing private life should be. You enjoy unexpected situations, even extravagant ones. But if you feel that your living environment hampers your freedom, you suddenly change your attitudes and your habits. Independence is your true realm. You may show an exceptional inflexibility when your intimate life moves away from the patterns you need, deep down. Your entourage must get used to your demands and to the values you are determined to keep with all your might and on which you are uncompromising. This determination does not allow for a laid-back attitude, or an indolence that so often causes degradations. You keep your own daily rhythms under control.

### ★★★☆☆ Moon opposite Mars, orb -7'

The Moon-Mars dissonance suggests touchiness and sometimes, aggressiveness. You are irascible and very sensitive to all sorts of threats and dangers. You react very quickly, too hastily. To protect your well being, you must learn to control your mood, to coordinate your actions and to balance your opinions. You are often disturbed by plain facts: Either you seek refuge in your intimate realm and refuse to face the truth or, on the contrary, you are engaged in altercations, which forbid all tranquillity. It is important that you balance these two tendencies and that you alternate moments of action with phases of

carelessness and relaxation. These two attitudes are relatively irreconcilable.

#### ★★★★★ Moon trine Neptune, orb -5° 35'

This harmonious Moon-Neptune aspect indicates an exceptional receptivity. You are sensitive to ambiances and you can grasp what is at stake in any given situation. You can pick up things in the general atmosphere that the majority of people miss out. Your deep intuition allows you to feel the subtlest details, that « little nothing » which is the key to behavioural patterns. Inspiration is your guide and imagination accompanies your daily rhythms. Mysteries, psychology, esoterism, fantasy, the supernatural... one of these fields, at least, is of concern to you. You pay utmost attention to your inner life, to moments of tranquillity when you relax, when you allow your mind to wander at will. The danger is that you may seek refuge in the imaginary and that you shirk reality.

#### ★★★★★ Moon trine Saturn, orb -6° 01'

This harmonious Moon-Saturn aspect is an element of stability for your private life. Your daily life lives up to your demands, you are totally true to yourself and logical through your very intimate behaviour. You do not choose the easy way out: on the contrary, it is in difficult situations that you are at your best. It is very unlikely that you become destabilized by trifles. This aspect indicates stability and also perfectionism. You are longing for a private life respectful of your heart of hearts and your genuine desires. Your well being is at this price, and its quest remains perpetual. Despite your reserved private behaviour, your emotions run very deep. You have a strong need for protection and for security. Your aspirations lead you towards contemplation or studies, more than towards social facilities.

## Your Affectivity

In your chart, the Sun is in Scorpio and Venus, in Libra. Your solar and Venusian signs follow each other but they are not alike: Scorpio's continuous will to call attention on himself opposes the associative nature of Venus in Libra. Your dearest wish? To live in perfect harmony with your partner, each one being the reflection of the other, one's double. Without connivance, without closeness, how can your wish be fulfilled? You love the persons who resemble you and, as time goes by, you learn to get closer to the people to whom you give. However, in the long run, you find it hard to keep on heading in that direction. The passionate atmosphere you need may exclude the quiet situations that your heart is so crazy about. You must show your difference and your specificity. In doing so, you can provoke the offensives without which your love life would seem unbearably dull! Your clear-cut, sometimes biting attitudes add spice to the game. More than anyone, you know how to alternate moments of affective intensity with unbridled passions and with calmer hours dedicated to the enjoyment of idyllic reconciliations.

Mark Ruffalo, it is impossible to hide it: to love, to be loved and to please, all these activities are at the centre of your life. Because you loathe solitude, you are constantly looking for company, and if possible, for an amorous company. It does not mean that you are full of passion all the time: you are refined, delicate and charming and you skilfully make use of customs with moderation and balance, without losing sight of your personal interests. You are ready to adjust and to compromise in all circumstances. You want to love and to remain integrated in your society: love gives precedence to propriety, which is fundamental to you. You are particularly gifted for this game of refined courtesy and politeness where appearances are at least as important as contents; you are able to show what you feel like showing and you achieve your ends with elegance, gentleness and goodness. These are precisely your main assets.

If there are no tense aspects with other planets in your chart, this configuration suggests that you are prone, Mark Ruffalo, to create a link between your career and the sentimental area, even though it may come under various guises: you may be in favour with women in general and enjoy their support as you climb the social ladder and you achieve success more quickly making use of your charm and of your seductive ability. Sometimes, you may mingle love and career (or marriage), thus combining business with pleasure and indeed even... with your destiny. In other cases, you will be interested in Venusian occupations such as the arts, aesthetics, decoration, luxury trade or diplomacy. Whatever your activity, you will appreciate it tremendously and you will feel very much at ease. You will enjoy affective popularity and consequently, an aura of the luck of the devil that can propel you to the top or, at least, to where you dream of being. You are often a perfectionist and the careful zeal you dedicate to the attainment of your objectives greatly contributes to their achievement. Never do you forget them, and nothing pleases you more than to rub shoulders with important people in the higher spheres of diplomacy, politics or business. You love to act as the mediator or the go-between and to have your irresistible charm duly acknowledged and rewarded. According to the Tradition, Venus in the 10th house often indicates that men are strongly attached to their mother and this tie favourably influences their destiny. In some adverse circumstances, you may lack constancy or perseverance in love, or this area may, to some extent, contradict your career objectives, owing to your carelessness. You may be dominated by women, lack authority or you may find yourself doing a balancing act between your love life and your professional life, and being unable to make a choice, thus damaging both.

★★★★★ Venus opposite Saturn, orb -7° 35'

This Venus-Saturn dissonance indicates a demanding, complex and often challenged affectivity. You are wondering about the meanings of love, pleasure and emotions. Your passions take an absolute character right away. No compromise, no sham must stain your sentimental life. In such a context, doubts abound. This aspect prompts you to review the roots of your affectivity, so as to find the assurance you lack and to soothe your dormant sentimental anxiety. Love is an eternal and endless quest. Because you are doubtful of the affection people have for you, you may never feel that you are really loved. Your affective behaviour reveals your uncertainties: tests and challenges follow one another until, eventually, you are certain to experience a love that meets your demands. It is obvious that on the sentimental area, you are not looking for the easy way out.

★★★★★ Sun semi-square Venus, orb 1° 04'

The Sun and Venus form a mild dissonance in your natal chart. There is nothing very serious to worry about. There is only a small gap between what you really want on the one hand, and your natural need to charm and the warmth you display on the other hand. Thus, will and affectivity are slightly out of phase, but it is most likely that you are the only one who feels it. This is a quite trivial characteristic, and you probably do not have to correct it, since it is so mild.

## The Way You Take Action and Your Sexuality

Mark Ruffalo, you are so resistant and so solid that you are able to cope with any challenge, any ordeal. You behave with persistence, rigour and discipline. You are so obstinate and patient that no effort is impossible to you, as if sensitivity and emotions were unable to divert you from your goals. With calm and lucidity, even coldness, you face up to things and you plan on a long-term basis. Nothing and no one can prevent you from fulfilling your responsibilities. You are a rock, a hard worker, and your iron will equals your resistance to blows. Your practical sense is at the service of your ambition which is real and

energetic, even though it may not be obvious. Sexually, you are active and vigorous. If you show more warmth, you may become an excellent lover; indeed, being demonstrative is not your major concern.

Mark Ruffalo, your capacity for action perfectly matches your personal enrichment and enhances your earning abilities! It is easy for you to engage into fights aiming at ensuring your material security, as it is the best outlet for your energy: it must serve a purpose, otherwise why bother? Consciously or not, your ardour is going full steam ahead for the success of your business and the protection of your interests.

This energy may also be understood in a figurative sense, and in that case, it involves your affective, family or professional security and has no direct link to money. You may be possessive, and you defeat those who intend to come too near to what belongs to you.

In any case, you are well-equipped and you usually get what you want. This is a valuable asset throughout your life because, indirectly, it turns you into a more independent person who does not need any protection.

★★★★★ Mars trine Pluto, orb 0° 19'

You have a very personal way of taking action and of experiencing confrontations and struggles. The laws of the world are subtle, often with complex and hidden mechanisms. For these reasons, you prefer to act behind the scenes rather than openly. You manage your daily life in a distant and subtle fashion while you try to understand the logic underlying observed facts. You may also provoke events although you act as if you were not concerned. Your interventions will be as efficient as they are discreet. You may secretly transform your life and you live through the inexpressible motivations that connect you with the invisible realm. Things, which cannot be formulated, must be experimented and felt. You test experiences that your entourage find uninteresting and meaningless.

★★★★★ Mars sextile Neptune, orb -1° 24'

This harmonious Mars-Neptune aspect is a signature for the missionary or the inspired activist. You are guided by an irresistible and implacable ideal. Exaltation may border on sacrifice for the sake of the noble or rebellious causes that inspire your struggles and your actions. Far from intellectual speculations, you need to live through your passions, to take action and to let yourself be carried away by a mission, an ideal or sometimes, an illusion. Indeed, you may be a Don Quixote fighting windmills, dedicating all your energy to an indefensible or a fanciful cause. More often than not, your commitments are courageous, even heroic. And the faith you display turns perilous enterprises into feasible projects. You can successfully implement actions that are considered doomed to failure by others.

★★★★★ Mars trine Uranus, orb -5° 3'

This harmonious Mars-Uranus aspect indicates an unshakable determination and the will to further your ideas through drastic, sudden, sometimes dramatic actions. You bend the string of your bow before taking action and you hit at the right time. The secret of your feats? An excellent command of your blitz actions. You concoct your plans in the dark, and then you move to an efficient and quick execution step that is often dazzling. You do not have the temperament of a loser. When you face an ordeal, you focus your entire energy and will on your unique aim: victory over any obstacle. This planetary configuration may lead to dangerous, even heroic actions. The danger is that you may over-estimate your strength or your chances for success.

★★★★★ Mars quintile Saturn, orb 1° 01'

Persistent action always bears fruit eventually. All that is needed is patience... A quality you have, undoubtedly. As confrontations become unavoidable, you show strong persistence and indisputable perseverance. Potential obstacles are more stimulating to you than they are discouraging. You are naturally fit for effort and for confronting realities and facts. You quickly overcome difficulties and you respond to crises in an efficient and considerate manner. You are enduring. You handle events with rigour and precision. These are valuable qualities nowadays, for they often come with the capacity to undertake adventurous experiences and to take limited risks!

## Your Intellect and Your Communication Style

You are the very type of the researcher endowed with great intellectual and imaginative capacities, Mark Ruffalo, and your curiosity is very deep. Researches, riddles and mysteries appeal to you and with a remarkable sixth sense and intuition, you endlessly try to unearth the truth, in all areas, like a psychoanalyst or a detective. You are a very secretive and introverted person, you find it difficult to open up and you rather prefer psychoanalysis. In spite of your clear-sightedness, you find it hard to deal with people: your critical mind, tinted with irony and causticity, may be destructive, especially since your determination and your stubbornness do not incline you to giving up. You are fond of provocations and you handle contradictions skilfully even though you may come across as dishonest.

You are intelligent and brilliant as soon as you have identified a goal and you have partners to work with you. You are less inclined to undertake strictly personal projects, Mark Ruffalo. Your mind and your curiosity include friends and collective projects. You believe that your particularly well-developed sociability is an asset for them.

Collective works, customers and public domain appeal to you, and you feel that you can achieve in those fields. Your negotiating skills are paradoxically stronger when you face the anonymity of a group rather than in intimate individual exchanges, may be only because you have no real interest in your own projects, for several reasons.

★★★★★ Mercury quintile Mars, orb -0° 08'

The harmonic Mercury-Mars aspect is the signature of a quick wit and an energetic character. You take decisions rapidly and you implement them straight away. You never accept stiff situations. You need to design, to take action, to fight to express your acute sense of relation: the world, the people, everything is of concern to you... You need to be involved in relationships and in dialogues. Your sharp retorts earn you a reputation of straightforwardness. On the relations' area, your quick wit and your mobility are greatly appreciated. You find the allies and partners you need at the right time. An art of resourcefulness that is precious...

★★★★★ Mercury bi-quintile Saturn, orb 0° 53'

Your vision of the world is rigorous and objective. An exemplary logic characterizes your mental attitude and your human relations. Your discerning faculties overlook no detail. You need to know the whys of your life and to explore the backstage of your surrounding world. The deepness of your relations dismisses superficial connections. It may be the reason why your interest is aroused when you are in touch with elements that are alien to your mode of functioning. You have the soul of a researcher, regardless of the form that your investigations may take. It may be an exacerbated curiosity for human



topics or a will to understand relationship stakes. It may also be a hobby or a course of study that introduces you to a riddle. It does not matter! Life is a perpetual quest for the unknown. Your critical mind is highly developed and you take commonplaces for granted only after thorough consideration.

## Your Goals, Motivations, Career, and Destiny

### Your Sun is posited in the 12th House

Mark Ruffalo, your desire for accomplishment goes through a quite peculiar and original form, in the sense that you cannot resist the appeal of mystery and of withdrawing from events and situations. Your natural inclinations often prompt you to isolate yourself and to keep your private secrets intact. Indeed, it is during such privileged moments, when you are alone, that you can recharge your batteries and eventually blossom up.

Somewhere in you, there is a propensity for introversion, quietness and even a kind of isolation, whether they stem from a natural taste or from force of habit. However, beware... you are more secretive and more enigmatic than you are solitary. The reason is because a more or less important part of you (depending on the rest of your chart) is hidden and inaccessible to others.

You are sociable but you appreciate discretion. You often show a real dedication towards people and your compassion is one of the original facets of your personality, which is difficult to figure out. Your individuality is finally forgotten, almost negated in some cases: you are not interested in personal glory, which is all to your credit. You thrive through dedication, volunteer work, humanitarian action and alleviating the distress around you, since you perceive the weight of injustice more acutely than others.

Here is the paradox you are entangled in: the more you keep your distance from society, the more you are successful, at least regarding the things that strengthen you and make you evolve. Working in secret or in a withdrawn environment suits you very well: you are favoured if you are a writer, a painter, a medical practitioner, a psychiatrist or even a monk. You may also work in a penitentiary institution etc., as well as in any occupation conducive to quietness and contemplation. It does not imply that you cannot achieve fame, but when you do, a hidden part of you must express itself in one of the above areas, for your own good.

The Tradition indicates that with this configuration, your evolution goes through ordeals or obstacles that lead to a crisis and to a period of solitude so that you are on your own and, may be, that you have the time to ponder over what is really important in your life journey that seems at first sight so absurd and crazy. Do not worry, there is no such thing as a better predisposition. Everyone has one's own path and yours goes through an unpretentious authenticity, secrecy and the regeneration of your whole being during a few periods of your life, faraway from social whirls and false relations that are time wasting.

Your accomplishment may turn you into the power behind the throne. It may also take you into hidden topics people do not talk about, the supernatural, occultism, great mysteries etc.

Your destiny contains a mysterious part that no one suspects: you are far from being as simple as people might think.

Although nothing appears externally, you know to which extent you are remote from the idea that the majority of people have of you. You are interested in situations that allow you to hide or to withdraw at some periods of your life; it is often due to a series of ordeals. But beyond your reaction of defence while facing events, you have a true inclination for mystery and secret.

You must overcome the periods of isolation or of ordeals because the reward is proportional to what you are entitled to expect: a more rapid moral and spiritual evolution, wisdom, and a blooming personality. Some people may choose small roads in the countryside to unfold their life. You choose highways to earn your salvation and you avoid the socialite and false delusions inherent to an ordinary life in society. More than anyone, you are favoured, you are prompted to overcome pitfalls and to never let pessimism discourage you.

### **The ruler of your chart is in the 9th House**

The ruler of the Ascendant, also referred to as the chart ruler as explained in a previous chapter, is also posited in one of the twelve Houses of the chart. Just like the Sun in his House, the ruler of the Ascendant provides certain abilities, or it makes you appreciate more keenly certain areas of life.

The ruler of your chart is in the 9th House, Mark Ruffalo. This position often gives you a strong taste for travels and foreign matters, whether through frequent real trips, or symbolically, through the pleasure to devote yourself to noble subjects: politics, religion, spirituality, or sciences. You feel the constant need to reach a higher level and to be on the move.

### **Aspects influencing your ambitions**

Regarding your destiny or your career, the following aspects of your natal chart allow to fine-tune what has just been said above:

#### **★★★★★ Uranus conjunction Midheaven, orb 2° 25'**

Uranus is in conjunction with your Midheaven, Mark Ruffalo. This very important aspect usually indicates a destiny which, in some rare life occurrences, takes most surprising twists. Like trans-Saturnian planets, out of the blue and beyond free will events occur by accident, as if they were caused by some sort of fatality. Thus, it is possible that your life changes its course completely and repeatedly, in a more than above average way, when transits and progressions activate your Uranus-Midheaven conjunction. Uranus stands for life upheavals, surprise, rebellion, freedom, and nonconformism. Whether it indicates inner needs or external events, which is the most frequent case, your destiny is very likely to be deeply disrupted, especially when transiting Uranus forms major aspects with your natal Midheaven (towards the ages of 21, 28, 42; 56, 63, and 84). Uranus' half-return (around the age of 42), is the most important one. It is also possible that your career or social destiny takes a stronger Uranian tone, with tight connections to modernity, space, astrology and out-of-the ordinary subjects, as well as physics, electricity, speed, etc.

#### **★★★★★ Pluto conjunction Midheaven, orb 3° 24'**

Pluto is in conjunction with your Midheaven, Mark Ruffalo. This very powerful aspect indicates that your career may have a fatality nature in the sense that, as with all trans-Saturnian planets (Uranus, Neptune, and Pluto), events of the collective category may deeply influence your personal destiny. Pluto is the planet of secret power, domination, unspoken words, taboos, police forces, and investigations. Therefore, depending on the other configurations found in your natal chart, it is possible that your career

or your social destiny inherits a Plutonian note, and is connected with mysteries, sexuality, inherited money, or some sort of occult power, such as the grey eminences or leaders working in the dark.

★★★★★ Sun conjunction Neptune, orb 5° 16'

This harmonious Sun-Neptune aspect indicates a highly developed intuition and clear-sightedness and sometimes, a sixth sense. Mental images or information drawn from the unconsciousness impress your mind. What was only a muddled feeling turns into certainty and deep conviction. You do not necessarily need to justify your attitudes: you take a decision because you feel that you have to do so, although you may not control the underlying logics. The danger is that you may follow fanciful or adventurous roads. Beliefs you cannot explain may prove wrong or over-optimistic. However, your intuition is seldom misleading. One last comment: there is often a keen curiosity for the « bizarre » and the paranormal with this planetary aspect.

★★★★★ Sun sextile Uranus, orb 1° 1'

This aspect reinforces the determination as well as the will to further your original, sometimes revolutionary, ideas and designs. Your capacity of innovation is important for your image. You have the soul of a leader. You display a forceful and synthesizing mind. You may tend to oversimplify or to schematize situations. In most cases, you know where you are heading to and how to reach your goals. Your determination is two-edged... not everybody will appreciate your contrasted standpoints. It is yes or no, black or white! This planetary configuration indicates certainties. When it comes to acting according to your inner motivations and to respecting your models, you can show an unusual willpower and sweep aside all obstacles lying on your path.

★★★★★ Mars trine Midheaven, orb -3° 04'

Your energy serves your professional goals and your social ascent in general, Mark Ruffalo. This beneficial aspect of Mars to your Midheaven endows you with strong dynamism, and it rewards your sustained and efficient efforts. You enjoy taking action, and your results are gratifying most of the time.

★★★★★ Neptune sextile Midheaven, orb -1° 39'

Thanks to this soft aspect of Neptune to your Midheaven, Mark Ruffalo, your intuition is very sharp, as far as your possibilities for success are concerned. Thus, you have no difficulties in finding your professional or social path, and your nose tells you whether something is good or not for you, even before you start to analyse it. Your imagination and your visionary qualities accompany you along your journey towards success.

★★★★★ Sun square Jupiter, orb -4° 53'

This Sun-Jupiter aspect indicates a strong desire for social and professional integration but it may cause a few difficulties of expression in that regard, owing to excesses or immoderation. There may be discrepancies between your objectives and the means implemented to achieve them. The danger of this configuration may be that you forsake an essential part of yourself for some ambitious but out of proportion plan. Too many efforts of adaptation and an excess of opportunism may make you miss the target. It is important that you remain true to your values and that you do not seek, at any cost, to adjust your attitudes to the situation. However, do not fall into the opposite trap: a need for the absolute that forbids compromises, although they are so necessary. You must reconcile idealism with the demands of the moment, the respect for principles with the sense of timeliness. When this configuration is not well integrated, things get out of hand. Extravagances are glaring. They may translate into an exuberant, overly demonstrative disposition. Personal ambition turns into pride, and joviality becomes

immoderation. Outbursts of anger are frequent. However, in a reserved and cautious context, this configuration reveals its positive nature.

★★★★★ Sun sextile Midheaven, orb 3° 36'

In the professional and social status areas, Mark Ruffalo, you know what you want, and you know how to cleverly obtain it. Because the Sun and your Midheaven are in agreement in your natal chart, you have no qualms and no hesitations when it comes to defining the strategy for reaching your goal.

★★★★★ Mercury semi-square Midheaven, orb 0° 03'

You are not pleased with the way you intellectually approach your professional goals, or simply your destiny. Because of this mild dissonance between Mercury and your Midheaven, in some circumstances, your communication style is tainted with a few hesitations or clumsinesses. There is nothing serious to worry about, and it is up to you to gradually build self-confidence through the study and mastering of your projects.

★★★★★ Moon sextile Midheaven, orb -3° 55'

Your sensitivity and your emotions are in line with your goal and your ambitions, Mark Ruffalo. You do not need to curb your temper lest other people have a wrong perception of you. Indeed, by being your true self, very simply, your social ascent will unfold naturally.

★★★★★ Sun trine Saturn, orb 6° 2'

This aspect indicates a firm and discreet will, a rigorous and objective character. You are clear-sighted, particularly in difficult situations. You enjoy the moments of calm and solitude during which you can review your life at will. Your judgments are enduring and often extremist. You are outraged by injustice and inconsistency. When a problem arises, you do not take the easy way out with short-term solutions, on the contrary, you strive to solve the issue thoroughly. Better than anyone else, you challenge yourself, you review your choices and your attitudes. This is the reason why you are capable of handling crises and of overcoming any obstacle that requires an in-depth and relevant response. You may lack spontaneity but your behaviour reveals your wisdom. When you are facing an issue, you put forward the good question, to others, but also to yourself.

★★★★★ Jupiter inconjunction Saturn, orb -1° 27'

Jupiter and Saturn form a dissonance in your natal chart. It is far from being horrendous. This planetary configuration, which is deemed somewhere between the individual and collective characteristics, only indicates that your social integration may be delayed, or may encounter a few difficulties. Such slight delays or setbacks often have their origins in your own behaviour. Indeed, since Jupiter represents laws and public life, and Saturn, seriousness and perseverance, in many instances, you may become impatient, or even rebellious to any form of authority or legal constraints, to the extent that you cross the white line... When you face such circumstances, you must resign yourself to listening to reason and accept to wait for your turn, lest... your achievements are even more slowed down by your own haste.

★★★★★ Saturn opposite Midheaven, orb -9° 57'

Saturn is in opposition to your Midheaven, Mark Ruffalo. He is at the same time in conjunction with your Imum Coeli which symbolises your roots, your family, and later on, your home. This configuration indicates that roots and family are important to you, may be too much. They are both a protection and a hindrance which prevent you from fully spreading your wings, lest you lose the security you definitely crave. When the time comes, you must reconstruct by yourself a stable and reliable platform similar to

that which protected your childhood, and you must never get disheartened in the process. If you are patient enough, time is your ally, even though in return, your professional destiny becomes somehow less important than your private cell, your home...

## Your Assets and Your Part of Joviality

The major asset of the planet of Greater Fortune in your chart, Mark Ruffalo, is the increase of your practical sense and of your capacity to create order in your surroundings. You progress easily in your activities and, in most cases, you are efficient, useful and cautious. The danger may be that you do not put yourself in the forefront to reap the rewards of your efforts, especially if the rest of your chart indicates a tendency for introversion or a lack of self-confidence.

Jupiter brings you a heaven-sent present, Mark Ruffalo, which is particularly nice because there is here an analogy between the planet and the house. Jupiter's broad, benevolent and warm vision of life is in line with the fields of higher education, philosophy, politics, and human sciences symbolized by the 9th House. As you mature, you radiate with wisdom. On the concrete plane, long-distance travels are very favoured, throughout your life.

The planet Jupiter symbolizes expansion, broadness and generosity. Jupiter is associated with the functions of synthesis, enthusiasm and optimism. In your natal chart, his house position is more important than his sign position because, like Saturn, Uranus, Neptune and Pluto, he is a slow planet. Many people born in the same period have Jupiter in the same sign. This is the reason why the sign occupied here is less meaningful than when it is occupied by the so-called fast planets, i.e. the Sun, the Moon, Mercury, Venus and Mars. Therefore, some caution is to be exercised as you read what follows.

Jupiter in Virgo gives you a talent for work, for practical activities and a higher than average dexterity. You have a strong sense of duty. You are very appreciated in your work environment because you are a perfectionist. The Tradition underlines that all the fields related to health and physical wellbeing are favoured.

## Your Serious Side

Your natural fieriness and your impulsiveness are slowed down and well-controlled. You gain in stability, tolerance, and stamina what you lose in spontaneity, competitiveness, and freshness.

Mark Ruffalo, you worry when you are at home, in private. You may feel, wrongly usually, that your family does not love you, that they do not understand you, that you are lonely, and that your father is too strict.

You are often attached to the past and to painful souvenirs. Your challenge is to understand that the present can become light and pleasant and that the burden of your sufferings comes from your own doubts and not from your family environment. If you succeed in doing so, you will win on all counts since, at the end of the day, you become responsible, stable and... happy at home!

The planet Saturn symbolizes contraction, effort, time, limitation and concentration. Saturn eliminates

anything that is not authentic, sooner or later. It is impossible to cheat him as he gives an irresistible desire to form a coherent whole with oneself, in responsible and wise ways. He is the great purifier. He represents our limitations but also our truth. In your natal chart, the house position where Saturn is posited is more important than his sign position because, like Jupiter, Uranus, Neptune and Pluto, he is a slow planet. Many people born in the same period have Saturn in the same sign. This is the reason why the sign occupied here is less meaningful than when it is occupied by the so-called fast planets, i.e. the Sun, the Moon, Mercury, Venus and Mars. Therefore, some caution is to be exercised as you read what follows.

Saturn in Aries decreases your impulsiveness, your primary-ness and your spontaneity. But it endows you with more patience, tolerance and reflection in the long run.

## **A Few Special Points**

### **Your Uniqueness and Your Utopias**

This is one of the most potent configurations. Unexpected disruptions of considerable intensity often occur on the factual plane. Embracing changes is the basis of the success of your destiny, which is very likely to include extreme variations, sometimes towards the most glorious heights, sometimes towards ordeals that you face with courage and determination, despite your unpreparedness.

Originality is certainly the context of your professional life or your destiny, in one way or another. Whether it is expressed through your very special area of expertise (high technology, space, aviation, astrology, television, etc.) or through the totally hectic nature of your progression (sudden changes of orientation), you are not able to plan what is coming next. Unforeseen events undertake to make a clean sweep of your certainties. This may offer many advantages if your state of mind is ready to approach life as a journey where your only freedom is to adjust in the best possible way to new emerging situations.

Most of the time, you are very independent, very keen to show your professional talents in a unique and modern way. You are a kind of pioneer or of rebel in your area, which allows you to better assert your genius.

### **Your Inspiration and Your Illusions**

You may be particularly sensitive to other people's sufferings and you want to dedicate yourself to a humanitarian cause. Your psychical life may be so intense that it brings about moments of loneliness that you use to transform yourself and to live through your ideals in sheer sincerity.

These moments of solitude may upset you. Undefined worries or hidden enemies may cause troubles, in a few rare occurrences.

In any case, this configuration is not negative as such, because there is an analogy between the planet Neptune, the 12th house, and Pisces. Your compassion and your emotional content may work wonders in your surroundings, and at the same time, they make you evolve spiritually.

## Your Passion and Your Authority

Your capacity for concentration and your mental power are your major assets for the study of higher knowledge and ideological concepts. You also tend to get away from your usual geographical cocoon! You are inhabited by passion and persistence, and you do not resist the temptation to explore foreign lands or to thoroughly explore ideas.

Besides, once you enter those attractive fields, it is most likely that you become deeply transformed and shattered. Nothing is any more what it used to be, and this is precisely what your unconscious suspected when you were magnetically drawn towards these remote realms.

Sometimes, these transformations may deeply hurt you, but isn't it the only way to change and evolve? Otherwise, all the benefits are yours: adrenaline increased by the passion and creativity of the moment, along with the happiness to be spiritually enriched, later on.

## Your Isolated Planets

In general, the ten planets of the chart are connected to other planets by major or minor astrological aspects. It is owing to those ties that the planets' energies can manifest in the chart owner's personality and play out within safeguards according to a specific tonality.

It seldom happens that in a natal chart, a planet is totally disconnected from the nine other planets.

Astrologers have observed that when such a case occurs, the person feels the energy of the unaspected planet in quite a singular way, very jerky and powerful at the same time. Thus, for instance, the famed astrologer Jean-Baptiste Morin de Villefranche wrote that "an unaspected planet heralds that something strange or extraordinary will take place regarding the meanings of the house in which the said planet is posited" (source : l'astrologie selon Morin).

Rules for detecting an unaspected planet: among all the testimonies that we have reviewed to this day, based on our experience, we tend to agree with American astrologer Janis Huntley who accepts seven aspects, which involve the zodiacal twelve sections of 30 degrees. The aspects to be considered are the conjunction (0 degree, cooperation or tension), the semi-sextile (30 degrees), the sextile and the trine (60 and 120 degrees respectively, aspects of cooperation), the square and the opposition (90 and 180 degrees respectively, tensed aspects), and the quincunx (150 degrees, slightly tensed). In this detection, the chart's angles are not taken into account.

In any case, it is important to remember that an isolated planet clearly expresses its influence when it is a personal planet. Thus, when the Sun, the Moon, Mercury, Venus, or Mars is isolated, it is certain that the effects described by Jean-Baptiste Morin de Villefranche will become manifest. As for Jupiter, Saturn, Uranus, Neptune, and Pluto, one must be cautious because the volume of cases documented is not yet large enough.

### In your natal chart, Mercury is unaspected

Mercury is seldom unaspected in a chart since he is never very far from the Sun and Venus.

Mercury's first characteristic is his mobility. Whether he gets his features from airy Gemini or earthy Virgo, in both cases, he is by nature quick, unstable, vivacious, and changeful. It is easy to understand that when he is unaspected, the intellectualism, the nervousness, and the dispersion that he brings about may blow up out of proportion. Even though the person is sometimes able to achieve short-lived amazing intellectual feats or verbal and written exploits, he has trouble finding stability and constructing on a long-term basis. He can display a wide range of features, from the undeniable charm of a versatile journalist and the talent of a TV presenter to the carelessness of the chronically absent-minded man.

Having said this, mobility is often an asset which enables to land on one's feet in all circumstances, and it does not restrain intellectual excellence. Mahatma Gandhi, whose destiny was exceptional as we all know, had unaspected Mercury in Scorpio in the 1st House.



## Annex 1: Your Minor Dominants

The five following dominants are less significant than those described at the beginning of your report. They may not be strongly felt. In some cases, they add several minor details to the analysis of your character, but they are rather for curiosity purposes. It is not necessary to take them into account when you first read your portrait.

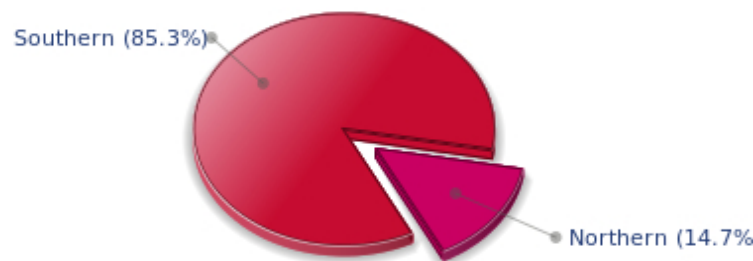
### Your Planetary Repartitions: Northern, Southern, Eastern and Western Hemispheres

The axis linking the 1st house's cuspide (the Ascendant) to the 7th house's cuspide - the Descendant - divides the zodiac into two bowls, a superior bowl, in the South, and an inferior bowl in the North. Quoting an expression by the famous American astrologer Rudhyar, the Southern part and the Northern part correspond to two functions: "being" and "doing". Other concepts are also associated with this North and South distribution, such as introversion - Northern hemisphere - and extraversion - Southern hemisphere - being or appearances, inner life or external life, reflection or action, dreaming one's life or living one's dreams, the abstract or the concrete, backstage or limelight.

This is not about determination but about personal inclination: thus, some people will be thrown into public life despite a prominent Northern hemisphere. If this happens, however, it will not be due to their will, their taste or their deep nature. Conversely, a prominent Southern hemisphere will not bring about a famous destiny to its owner, even if he tends to turn the spotlight on himself, or if he looks for a more active life. It is a matter of deep nature and natural inclination. Of course, none of the typologies is "superior" to another.

In your birth chart, Mark Ruffalo, the ten main planets are distributed as follows:

### Your Northern and Southern Hemispheres



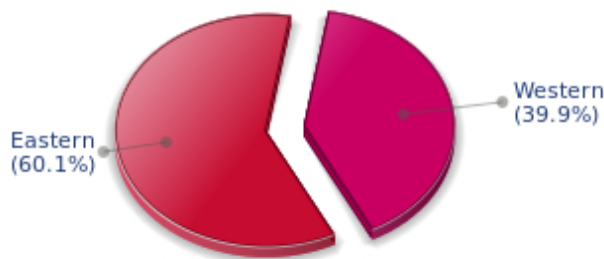
Mark Ruffalo, the predominance of planets in the Southern hemisphere prompts you to take action, to draw attention on yourself, and to make your actions and what you have in mind visible to everyone. Sometimes, without giving a single thought to, and to the detriment of, a richer inner life and a deeper and wiser reflection. Action and communication are inevitable in your opinion, and you tend to think that the only thing that matters is what is seen! This is not always true, and it is up to you to progress through the development of inner qualities such as meditation, solitude and imagination so as to become stronger.

The birth chart is divided into two other parts, Eastern and Western, by the axis linking the Midheaven to the Imum Coeli.

The Eastern part, on the Ascendant side, shows the person's ego, will, magnetism, and vitality, whereas the Western part, on the Descendant side, symbolizes other people, communication, relationships and their influence, as well as flexibility and adaptability.

Mark Ruffalo, here is the planetary repartition in your Eastern and your Western hemispheres:

### Your Eastern and Western Hemisphere:



The predominance of planets in the Eastern hemisphere of your chart enables you, Mark Ruffalo, to assert yourself and to rely on your determination: you know what you want and you have a tendency to take action and to decide with your personal goals as priorities, even if they can be in contradiction with what others think.

A definite asset... provided that you never make mistakes in your choices. You should pay more attention to your entourage in order to counterbalance your nature and to take advantage of your assets wisely. The danger is that you may be too authoritarian and not conciliating enough. Strong determination coupled with flexibility and acute sense of communication are qualities you should develop.

### Your Yin and Yang Polarity

The twelve signs are divided into two polarities, called active or passive, or sometimes masculine and feminine, positive and negative, Yang and Yin. This classification corresponds to two quite distinct tonalities, the first one bringing extraversion, action, self-confidence and dynamism, the second one, introversion, reactivity, reflection and caution. None is superior to the other, each group has its own assets and shortcomings. Odd signs - Aries, Gemini, Leo, Libra, Sagittarius and Aquarius - belong to the first group, whereas even signs - Taurus, Cancer, Virgo, Scorpio, Capricorn and Pisces - belong to the second group.

## Your Yin and Yang Polarity



According to the disposition and qualities of your planets and angles, you are rather influenced by Yin energy, the passive polarity, Mark Ruffalo: you are quite introverted, imaginative and sometimes discreet, but you are a deep and wise person who is not content with just noisy and flashy things. At times, you doubt but you think that those who don't are a bit... thoughtless. Allow yourself to take more laid-back attitudes and put your reserve aside, because good equilibrium is always healthier.

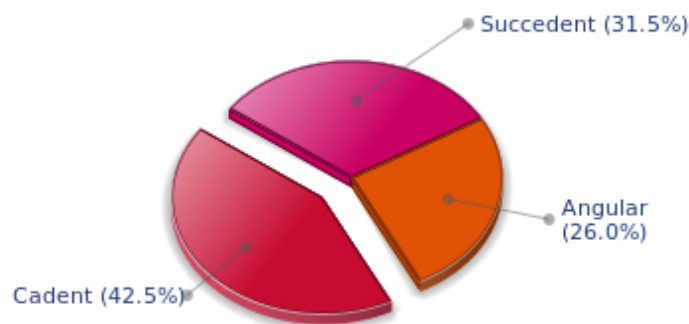
### Your Houses' Accentuations

Houses are split up into three groups: angular, succedent and cadent.

The first ones are the most important ones, the most "noticeable" and energetic houses. They are the 1st, 4th, 7th and 10th houses. Their cusps correspond to four famous angles: Ascendant for the 1st house, Imum Coeli for the 4th house, Descendant, opposite the Ascendant, for the 7th house and Midheaven for the 10th house, opposite the Imum Coeli.

Planets are evaluated according to a whole set of criteria that includes comprehensive Western astrology rules. At their turn, planets emphasize specific types of houses, signs, repartitions etc., as previously explained.

## Your Houses' Accentuations



Cadent houses, namely the 3rd, 6th, 9th and 12th houses, are very emphasized in your chart, Mark Ruffalo. They indicate important potential for communication, adaptability and flexibility. These houses are symbolically linked to the mind and intellect. The relative weakness implied by these characteristics indicates your tendency to hesitate or to be indecisive, but also your remarkable ability to start off again, which is a nice quality, finally: you can easily get yourself out of a tight spot thanks to your mobility and casualness, in the best sense of the term. This group of houses corresponds to evolutionary characteristics of your personality. However, they are only indications and you must include them in the rest of your chart in order to see whether they are validated or not!

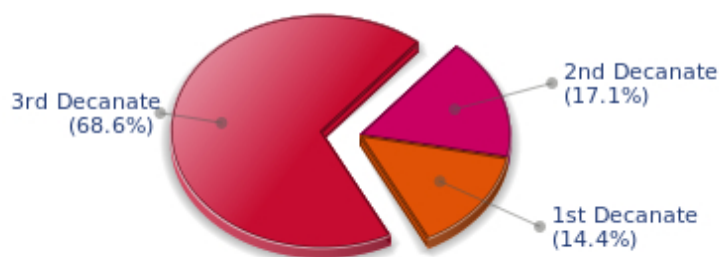
### Your Esoteric Decanates

Each sign contains 30 degrees and can be divided into three equal parts: the decanates. The Tradition indicates that specific meanings can be associated to each of the three decanates. Their sphere of activity is usually limited to the Sun sign, however, it is even more interesting to observe the distribution of all the planets in the chart to get an idea of the respective importance of the three decanates, which can complement the description of the personality.

These meanings must be considered with the greatest caution. Indeed, they are minor characteristics that can only underline other outstanding traits of character.

Traditionally, the first decanate highlights the characteristics of the sign where a planet is located. The two other decanates correspond to sub-dominant planets, depending on the nature of each sign. This system leads to a multiplication of meanings and it is impossible to have a clear understanding: here, we prefer to give only the meaning of one decanate in comparison with the other two, within the birth chart as a whole. Again, the greatest caution is needed with regard to this minor indication as it is not always reliable: it is not essential that you read these texts in the beginning. You can get back to them later on, once you have read more important interpretations

### Your Esoteric Decanates



The third decanate, which means the part between 20° and 30° of any zodiacal sign, prevails in your natal chart, Mark Ruffalo. It contains the degrees of spirituality, traditionally more delicate to deal with, since they incline towards evolution and therefore, destabilizations. Individuals with an emphasised third decanate may have deeper sensitivity than most people, which often brings ordeals but also spiritual rewards.

## Annex 2: Karmic Study

The karmic theme is a good complement to the psychological portrait, or natal chart. This analysis is based on the positions of the Lunar Nodes, the Black Moon and the Part of Fortune: they are also called fictitious points and describe the spiritual purpose of your destiny. Because there is in all of us an experience and a quest, our life is an evolutionary journey... provided that we head towards the right direction, of course! Indian astrologers highly prize the Nodes axis (North Node and South Node). It is the Ariadne's thread that we are invited to follow. The Black Moon indicates the sector where we are most likely to transform or to transcend, whereas the Part of Fortune points out the area where we can easily express our specificity.

### The Lunar Nodes: a spiritual path

Lunar Nodes have their roots in the Indian tradition and they are based on a simple concept: each of us have a mission of their own, here on earth, a destiny, a course. According to the Indian philosophy, life is a school: the nodal axis describes our past experiences (South Node, our karma, our spiritual inheritance or our previous lives), and our aims on earth (North Node, our Dharma, the purpose of our current incarnation). This is the reason why the study of the lunar nodes is called "Karmic astrology". Here, we shall not step into hypothetical past lives. Wherever our current trends may come from, all that really matters is that we become aware of the purpose of our life, its finality and our dharma. We are likely to understand our life purpose around the age of 37, when the Lunar Nodes return to their natal position.

You have obvious sociability qualities. You know better than others how to adjust to a new context and to copy your entourage's behaviour exactly. You do not dissociate yourself from groups or cells (social, family), on the contrary, you frequently adopt flexible attitudes that meet other people's expectations. This may translate into a lack of fighting spirit. You may not dare to go against prevailing fashions and currents. Because you dread unknown situations, you may miss the opportunity to innovate. It is important that you learn to go it alone and to get rid of scruples that hamper your doings: life encourages you to leave aside other people's opinions and, as time goes by, to find your autonomy of thought and action. While keeping your sociable nature, it is important that you develop a sense of individual initiative. In many situations, one can only rely on oneself. In such cases, you have the possibility to achieve the freedom many people dream of, without really giving themselves the means to implement it. Do not allow your entourage to dictate your way of life, over and over again. However, do not fall into the opposite excess: the frenzied individualism of those who value nothing except their own interest! Your life's purpose may be to master your destiny.

You make friends easily and you earn your entourage's confidence and esteem. Very early, you develop an acute sense of fraternal relations, generously receiving and giving. This spirit of mutual aid may lead to a happy-go-lucky attitude that may border on carelessness... As you rely too heavily on friendship, there may be a danger to undergo a few setbacks: idealism and spontaneous dedication may meet with ungrateful reactions or the indifference of the very persons whom you try to help. Your destiny is probably marked with a quest of individual achievement. It is of utmost importance that you create, that you beget a fruit, a work or a child. Little by little, you become independent, without selfishness, but with the strength of those who know that they can only rely on themselves. Do not hesitate to live your dreams to the end and to engender, over and over again. Creation, whatever its form, is the path to your fulfilment. You slowly discover the pleasure to design as you please, without outside interference. It is important that you find an area for your personal expression and, as the poet says, "before the eyes, constantly, night and day, either a great labour or a great love".

## Lilith or the Dark Moon

The Black Moon is the spark of refusal and distance that is dormant in all of us. Depending on the sign where she is found in your chart, she highlights the desire to transform and to sublimate a part of your life. The Black Moon is unfathomable and mysterious. She gives a different dimension to the sector she touches. Her manifestations are subtle; nonetheless, she is powerful, implacable, demanding to the extreme... The Black Moon is also called Lilith. She is the inner flame of your heroism and insubordination.

Your approach to comfort and pleasure is paradoxical: you deeply long for a realm where your senses and your desires can be fulfilled at will. However, you are so demanding that you may refuse the simple joys of life and you prefer an absolute quality of life... an absolute that is often inaccessible, but so thrilling!

You are a person thirsting for precision and perfection. Your rebellions are frequent: any mechanism that is not running perfectly smoothly is dismissed. Any person whose attitudes seem inconsistent becomes the object of your refusal. Better than anyone else, you can ridicule social stereotyped models, too conventional and ineffective. It is likely that you often succeed in giving a logical dimension to the craziest situations.

## The Part of Fortune in House

The Part of Fortune is a very ancient fictitious point that depends on the lunar phase at the time of birth. The astrological house tenanted is particularly strengthened. In your chart, the Part of Fortune is in the 8th house: you need to constantly transform your life, to evolve and to shed your skin. You do not hesitate to regularly question the basis of your manner. Everything is death and revival and the wheel of life is ruthless: what was still yours yesterday will be a mere souvenir tomorrow... Your wealth is the know-how you demonstrate when you cope with changes imposed by events, while always remaining true to yourself.

## Retrograde Planets

The karmic tradition insists on the issues related to the so-called retrograde planets. They are considered to be the inheritance of a past that was not well experienced, a sort of unfinished business. The interpretations of the retrogradation may seem negative or excessive to you. However, you may relate to a scenario that you have often and repeatedly experienced... as if you underwent several setbacks that all have the same cause. Until the day you become aware of it and you can free yourself from it! Through the slow integration of these planetary energies, you will be able to overcome your difficulties and to pay your karmic debt. Actually, each retrograde planet highlights an opportunity for evolution. Nothing can be achieved without the will to grow spiritually and to defeat your own demons.

The karma associated with Saturn may border on self-censorship: during your childhood, particularly, you were doubtful of your abilities and your talents. You had a propensity to put yourself in a no-win situation and to under-estimate yourself. Obstacles abound: taboos and prohibitions of all kind slow down your evolution. Little by little, you learn to re-evaluate your possibilities and to gain more self-confidence. Your personal rigour then turns out to be constructive: you are not destabilized by life ordeals and you practice a self-discipline that favours steady evolution. Although your path may be steep, it is nonetheless safe.

**N.B:** modern astrology attaches less and less importance to the principles of retrograding planets.

## Conclusion

A few remarks are needed here in order to allow you to fully take advantage of your astrological portrait: firstly, do not forget that a birth chart is also a photograph of the sky at birth and a structure that not only contains the personality's characteristics, but also its potential evolution.

We all know that, in real life, people begin to know themselves when they are in their forties, or even later. Likewise, several traits of character in a portrait may seem surprising: in most cases, it means that such features are not yet developed.

Some personalities reveal themselves late in life, whereas others are more precocious. It must be remembered that psychological structures are in a state of continuous evolution because they are influenced by unfolding events and gradual maturity. We can never underline strongly enough the "mobile" nature of the personality, throughout a lifetime.

On the other hand, it is difficult to discriminate what is "already present" at this moment in your life when you are reading your chart's interpretation, from what will appear later in the logic of your evolution: you must sort out all the pieces of information provided and, in most cases, you will see that your astrological portrait is helpful for your endeavours to know yourself better.

Finally, several readings of an astrological portrait are usually necessary in order to absorb all its different meanings and to evaluate the relevance of each character trait.

In any case, better self-knowledge obviously contributes to faster personal blossoming, and it is undoubtedly one of astrology's major roles: contributing to know oneself better, in order to improve more rapidly, to deal with one's weaknesses and to avoid its drawbacks, and to take advantage of one's assets as efficiently as possible.

---