



Louis de Funès's Astrological Portrait





Louis de Funès's Astrological Portrait



Introduction	2
Your Planets, Houses, Aspects, and Natal Chart	4
Preamble	7
Your Planetary Repartitions	8
Your Dominant Modes and Elements	9
Your Dominants: Planets, Signs and Houses	10
Your Style, Behaviour, and Peculiarities	15
Your Sensitivity	19
Your Affectivity	20
The Way You Take Action and Your Sexuality	22
Your Intellect and Your Communication Style	23
Your Goals, Motivations, Career, and Destiny	24
Your Assets and Your Part of Joviality	26
Your Serious Side	26
A Few Special Points	27
Your Isolated Planets	28
Annex 1: Your Minor Dominants	29
Annex 2: Karmic Study	33
Conclusion	36





Louis de Funès's Astrological Portrait

Introduction

To fully benefit from this portrait, we suggest that you read its introduction and its preamble carefully, and then that to take the time to soak up the interpretations of each chapter. Given the large number of texts, which mirrors the human being's complexity, you may need to go through the contents several times, so as to get a good grasp of their meaning and to know yourself better. This will reward your patience.

The purpose of this report is to describe your psychological portrait and to highlight the most fundamental features on the personal area. The report begins with the analysis of your planetary dominants and outlines your personality's general traits before going into further detail. Minor dominants are analysed at the end of Annex 1, for purposes of clarity. Your report then delineates the various facets of your personality:

In general, even when relationships are not involved, we express ourselves and we feel according to our character and our personal motivations: this is indicated by the Ascendant and the Sun sign which both give details on the way we function. They shed a tremendously important light which allows to figure out your personality. Here, we describe your Sun sign (your inner self), your Ascendant (your behaviour as seen by others), and the ruler of the Ascendant (interesting additional pieces of information about the style of your personality). These descriptions alone cover nearly a third or a half of your psychological signature, depending on your natal chart characteristics.

Then, we address your sensitivity, or in other words, the way you receive things and how you express your emotions ; it works as a constant filter for all your exchanges, even when it becomes a more secondary element in your amorous relationship, because at that moment, affectivity prevails. Sensitivity is the way you perceive things, it is your radar, your daily mood, and at the same time, it indicates how you react to your entourage, on a daily basis. It is what others immediately see of you. In the second paragraph, we explain in which areas of life your sensitivity and your emotions are strongest, therefore, where you are most vulnerable.

After this, it is your affectivity, the way you love and how you charm, that comes into play as soon as you fall in love: the first part indicates its basic structure or its main form. The second part describes the areas where it is best expressed and how you display it, according to your personality.

A third fundamental area deals with your mode of action and your sexuality: how you behave, how you manage to obtain what you want, what kind of desires you have. There are twelve possibilities, very

different from one another. The study discloses the specific one that applies to you. In the second paragraph, we explain in which life areas you may most efficiently take advantage of your capacity for action and for conquest.

Your ways of communicating and of thinking are obviously among the major elements that must be integrated into the delineation and the description of your personality. Indeed, they influence your general behaviour and may modify or enhance the image your project (for instance, extraversion may “compensate” a weak affectivity, but a huge number of cases are possible). An additional chapter indicates the favourite areas where you enjoy communicating, thinking and meeting with people.

Besides, we analyze an even more personal aspect that is important to define and understand what may occur within your couple: each of us have a centre of interest, a privileged manner to be fulfilled or to achieve our destiny; this main motivation is indicated by the positions of your Sun and your chart ruler in the astrological houses and we provide you with its detailed description.

A natal chart contains the potential for specific fulfilment and a whole range of assets, protections and qualities. How does the lucky factor manifest in your personality? In which area can you best exploit your qualities? The answers are precisely revealed to you in this chapter.

On the other hand, we all feel in us a part of vulnerability, doubts and fears. How does this part of solemnity or serious side play out? How is it possible to handle it in order to evolve and to get rid of useless elements? All this information is provided to you in these two paragraphs.

Then, you can discover three additional traits of your personality that must be considered as secondary ones. They deal with your predispositions, which means that they need to be triggered by external events because they are not influenced by your will; let's call it a part of fate. Please, bear in mind that your destiny can unfold only in accordance with what you are: therefore, even if they belong to your more unconscious self, these characteristics are parts of you, definitely.

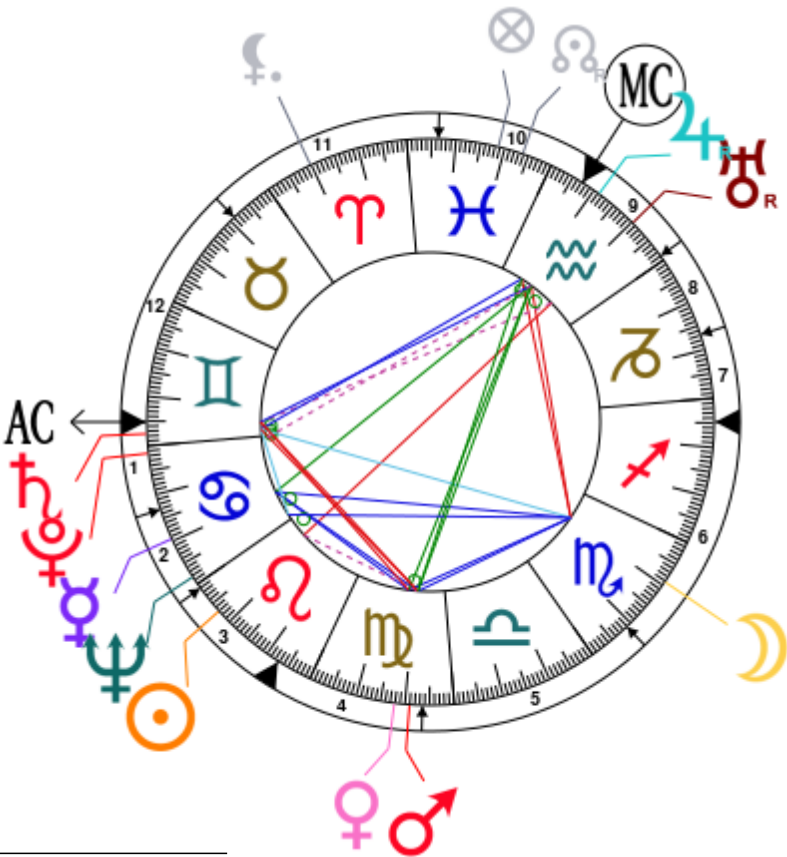
The karmic chart complements the psychological portrait or natal chart. It is based on the positions of the Lunar Nodes, the Black Moon, and the Part of Fortune. These elements of the chart, sometimes referred to as fictitious points, provide information about the spiritual meaning of your destiny. Owing to the fact that we all have in us acquired knowledge and the urge to go on a quest, our life is an evolutionary journey... However, these texts must be read with great caution: this is the reason why you will find this analysis in the Annex 2 of your report.

Your Planets, Houses, Aspects, and Natal Chart

Louis de Funès, born July 31, 1914, at 01:00 AM, Courbevoie (Ile-de-France), France [2.15E ; 48.54N ; 0W00]

Natal Planets				In House	Natal Houses (Placidus)		
☉ Sun	6°59'	♌ Leo		House 3	House 1	25°10'	♊ Gemini
☾ Moon	20°50'	♏ Scorpio		House 6	House 2	13°08'	♋ Cancer
☿ Mercury	19°30'	♋ Cancer		House 2	House 3	1°02'	♌ Leo
♀ Venus	17°51'	♍ Virgo		House 4	House 4	22°43'	♌ Leo
♂ Mars	20°55'	♍ Virgo		House 4	House 5	23°33'	♍ Virgo
♃ Jupiter	18°45' R	♒ Aquarius		House 9	House 6	8°56'	♏ Scorpio
♄ Saturn	27°34'	♊ Gemini		House 1	House 7	25°10'	♐ Sagittarius
♅ Uranus	9°45' R	♒ Aquarius		House 9	House 8	13°08'	♑ Capricorn
♆ Neptune	28°18'	♋ Cancer		House 2	House 9	1°02'	♒ Aquarius
♇ Pluto	1°31'	♋ Cancer		House 1	House 10	22°43'	♒ Aquarius
♊ Node	6°11' R	♊ Pisces		House 10	House 11	23°33'	♊ Pisces
♋ Lilith	20°10'	♈ Aries		House 11	House 12	8°56'	♉ Taurus
AS AS	25°10'	♊ Gemini					
MC MC	22°43'	♒ Aquarius					

In keeping with the common practice, we consider that a planet posited within 1 degree of the next house belongs to that house. We allow an orb of 2 degrees for the ASC and the MC.



List of Your Active Planetary Aspects

Please find below the list of all the active inter-aspects which are interpreted in this report, in addition to your planets in sign, in house, and all your planetary dominants. Since the aspects between slow-moving planets are of a collective nature, they are not displayed, in compliance with our interpretation rules.

- ★☆☆☆☆ Sun semi-square Mars, orb -1° 04'
- ★★★★★ Sun opposite Uranus, orb -2° 46'
- ★☆☆☆☆ Sun conjunction Neptune, orb 8° 4'
- ★★★★★ Moon trine Mercury, orb 1° 19'
- ★★★★★ Moon sextile Venus, orb 2° 58'
- ★★★★★ Moon sextile Mars, orb -0° 04'
- ★★★★★ Moon square Jupiter, orb -2° 05'
- ★☆☆☆☆ Moon bi-quintile Saturn, orb -0° 43'
- ★☆☆☆☆ Moon trine Neptune, orb -7° 28'
- ★★★★★ Moon square Midheaven, orb 1° 52'
- ★★★★★ Mercury sextile Venus, orb -1° 38'
- ★★★★★ Mercury sextile Mars, orb 1° 24'
- ★☆☆☆☆ Mercury inconjunction Jupiter, orb 0° 45'
- ★☆☆☆☆ Mercury conjunction Neptune, orb 8° 48'
- ★★★★★ Venus conjunction Mars, orb 3° 03'
- ★☆☆☆☆ Venus inconjunction Jupiter, orb 0° 53'
- ★☆☆☆☆ Venus square Ascendant, orb -7° 18'
- ★☆☆☆☆ Mars inconjunction Jupiter, orb -2° 09'
- ★☆☆☆☆ Mars square Saturn, orb -6° 39'
- ★★★★★ Mars square Ascendant, orb -4° 15'
- ★☆☆☆☆ Mars inconjunction Midheaven, orb 1° 48'
- ★☆☆☆☆ Jupiter trine Ascendant, orb 6° 25'
- ★★★★★ Jupiter conjunction Midheaven, orb 3° 57'
- ★★★★★ Saturn conjunction Ascendant, orb 2° 23'
- ★★★★★ Saturn trine Midheaven, orb 4° 51'
- ★★★☆☆ Uranus sesqui-quadrant Ascendant, orb 0° 25'
- ★★★★★ Pluto conjunction Ascendant, orb 6° 2'

Meaning of Stars

Stars indicate the strength of the aspects. Two solid coloured stars (there are half-stars also), mean that the aspect is powerful enough to be noticed at the first reading.

We strongly advise that you read the paragraphs displaying less than two stars later on, after you have absorbed the full import of the other texts.

The yellow colour indicates a soothing and conciliating aspect, and the red colour, a dynamic and tense aspect. The red aspects enable you to evolve, to take action, and to learn to turn your "weaknesses" into assets through your life experiences. The yellow aspects are innate strengths on which you rely in order to grow better with the former...

Preamble

When interpreting a natal chart, the best method is to start gradually from general features to specific ones. Thus, there is usually a plan to be followed, from the overall analysis of the chart and its structure, to the description of its different character traits.

In the first part, an overall analysis of the chart enables us to figure out the personality's main features and to emphasize several points that are confirmed or not in the detailed analysis: in any case, those general traits are taken into account. Human personality is an infinitely intricate entity and describing it is a complex task. Claiming to rapidly summarize it is illusory, although it does not mean that it is an impossible challenge. It is essential to read a natal chart several times in order to absorb all its different meanings and to grasp all this complexity. But the exercise is worthwhile.

In brief, a natal chart is composed of ten planets: two luminaries, the Sun and the Moon, three fast-moving or individual planets, Mercury, Venus and Mars, two slow-moving planets, Jupiter and Saturn, and three very slow-moving planets, Uranus, Neptune and Pluto. Additional secondary elements are: the Lunar Nodes, the Dark Moon or Lilith, Chiron and other minor objects. They are all posited on the Zodiac wheel consisting of twelve signs, from Aries to Pisces, and divided into twelve astrological houses.

The first step is to evaluate the importance of each planet. This is what we call identifying the dominant planets. This process obeys rules that depend on the astrologer's sensitivity and experience but it also has precise and steady bases: thus, we can take into account the parameters of a planet's activity (the number of active aspects a planet forms, the importance of each aspect according to its nature and its exactness), angularity parameters; (proximity to the four angles, Ascendant, Midheaven, Descendant and Imum Coeli or Nadir, all of them being evaluated numerically, according to the kind of angle and the planet-angle distance) and quality parameters (rulership, exaltation, exile and fall). Finally, other criteria such as the rulership of the Ascendant and the Midheaven etc. are important.

These different criteria allow a planet to be highlighted and lead to useful conclusions when interpreting the chart.

The overall chart analysis begins with the observation of three sorts of planetary distributions in the chart: Eastern or Western hemisphere, Northern or Southern hemisphere, and quadrants (North-eastern, North-western, South-eastern and South-western). These three distributions give a general tone in terms of introversion and extraversion, willpower, sociability, and behavioural predispositions.

Then, there are three additional distributions: elements (called triplicity since there are three groups of signs for each one) - Fire, Air, Earth and Water - corresponding to a character typology, modality (or quadruplicity with four groups of signs for each one) - Cardinal, Fixed and Mutable - and polarity (Yin and Yang).

There are three types of dominants: dominant planets, dominant signs and dominant houses. The novice thinks astrology means only "to be Aries" or sometimes, for example, "to be Aries Ascendant Virgo". It is actually far more complex. Although the Sun and the Ascendant alone may reveal a large part of the character - approximately a third or a half of your psychological signature, a person is neither "just the Sun" (called the sign) nor just "the first house" (the Ascendant). Thus, a particular planet's influence

may be significantly increased; a particular sign or house may contain a group of planets that will bring nuances and sometimes weaken the role of the Ascendant, of the Sun sign etc.

Lastly, there are two other criteria: accentuations (angular, succedent and cadent) which are a classification of astrological houses and types of decanates that are occupied (each sign is divided into three decanates of ten degrees each). They provide some additional informations.

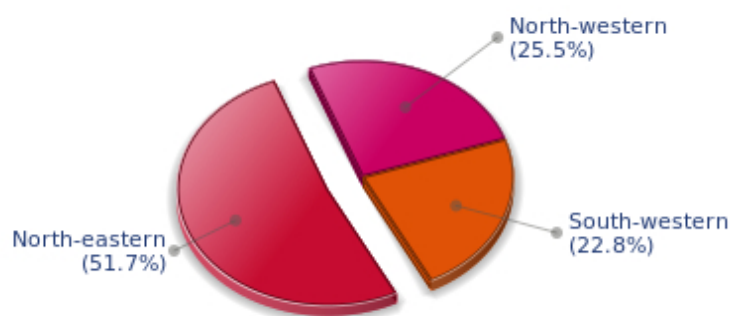
These general character traits must not be taken literally; they are, somehow, preparing for the chart reading. They allow to understand the second part of the analysis, which is more detailed and precise. It focuses on every area of the personality and provides a synthesis of all the above-mentioned parameters according to sound hierarchical rules.

As explained in the introduction of your Psychological Portrait report, minor dominants are analysed at the end of Annex 1, for purposes of clarity.

Your Planetary Repartitions

Each quadrant is a combination of the four hemispheres of your birth chart and relates to a character typology. The Southern hemisphere – the top of your chart, around the Midheaven – is associated with extraversion, action, and public life, whereas the Northern hemisphere prompts to introversion, reflexion, and private life. The Eastern hemisphere – the left part, around the Ascendant – is linked to your ego and your willpower, whereas the Western hemisphere indicates how other people influence you, and how flexible you are when you make a decision.

Your Four Quadrants

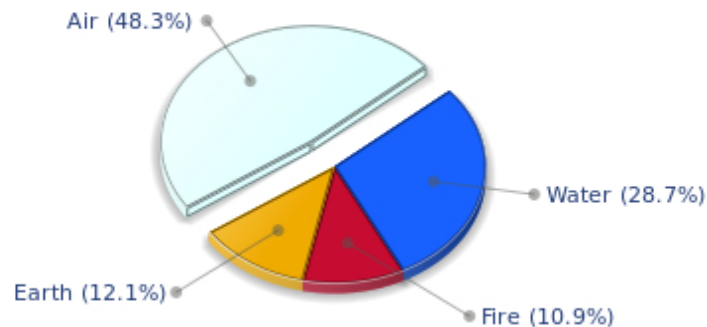


Louis de Funès, the nocturnal North-eastern quadrant, consisting of the 1st, 2nd and 3rd houses, prevails in your chart: this sector favours self-assertion and material security to the detriment of your perception of others. You consider self-transformation to be a hazardous adventure. You are inclined to seek stability and you tend to protect yourself with your actions. Possession, acquisition but also communication, without opening up too much, are part of your deep motivations. You are rather autonomous and constant, however it is important that you pay more attention to others, so that you can improve your outcomes.

Your Dominant Modes and Elements

Louis de Funès, here are the graphs of your Elements and Modes, based on planets' position and angles in the twelve signs:

Your Four Elements

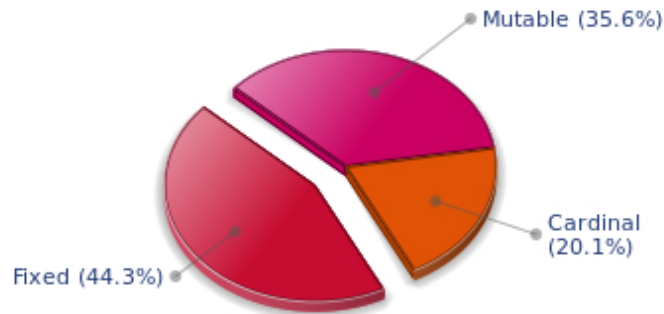


Cheers for communication and mobility, Louis de Funès! The predominance of Air signs in your chart favours and amplifies your taste for relations and for all kinds of short trips, whether real (travels) or symbolic (new ideas, mind speculations). You gain in flexibility and adaptability what you lose in self-assertion or in pragmatism.

The predominance of Water signs indicates high sensitivity and elevation through feelings, Louis de Funès. Your heart and your emotions are your driving forces, and you can't do anything on Earth if you don't feel a strong affective charge (as a matter of fact, the word "feeling" is essential in your psychology). You need to love in order to understand, and to feel in order to take action, which causes a certain vulnerability which you should fight against.

The twelve zodiacal signs are split up into three groups or modes, called quadruplicities, a learned word meaning only that these three groups include four signs. The Cardinal, Fixed and Mutable modes are more or less represented in your natal chart, depending on planets' positions and importance, and on angles in the twelve signs.

Your Modes



The Fixed mode corresponds to a majority of elements in your chart, Louis de Funès, and represents the desire for security and durability: you are able to concretely appreciate a situation and its stability. You definitely prefer to play the role of a loyal, obstinate and hard-working person, rather than to try new and risky experiences - beware, however, not to confuse obstinacy with intransigence. You structure, cement, and strengthen everything you find on your way: it is your nature, although you are not especially interested in swiftness: slow and steady...

Your Dominants: Planets, Signs and Houses

The issue of dominant planets has existed since the mists of time in astrology: how nice it would be if a person could be described with a few words and one or several planets that would represent their character, without having to analyse such elements as rulerships, angularities, houses, etc!

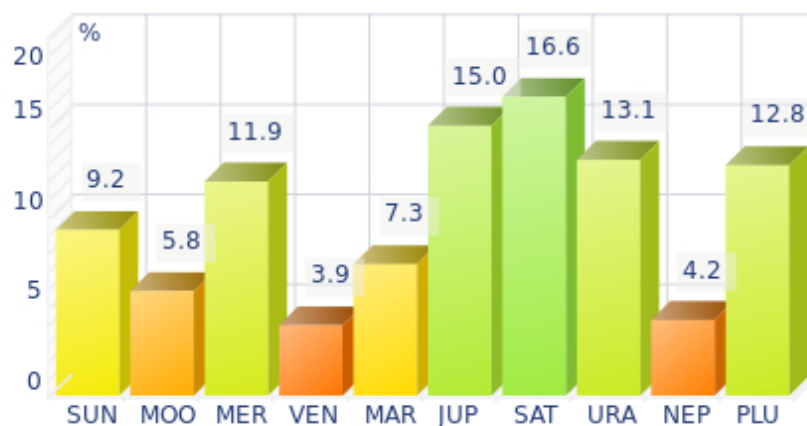
The ten planets - the Sun throughout Pluto - are a bit like ten characters in a role-play, each one has its own personality, its own way of acting, its own strengths and weaknesses. They actually represent a classification into ten distinct personalities, and astrologers have always tried to associate one or several dominant planets to a natal chart as well as dominant signs and houses.

Indeed, it is quite the same situation with signs and houses. If planets symbolize characters, signs represent hues - the mental, emotional and physical structures of an individual. The sign in which a planet is posited is like a character whose features are modified according to the place where he lives. In a chart, there are usually one, two or three highlighted signs that allow to rapidly describe its owner.

Regarding astrological houses, the principle is even simpler: the twelve houses correspond to twelve fields of life, and planets tenanted any given house increase that house's importance and highlight all relevant life departments: it may be marriage, work, friendship etc.

Louis de Funès, here is the evaluation diagramme for your planets:

Your Dominant Planets



The three planets that are most highlighted in your chart are Saturn, Jupiter and Uranus.

Saturn is part of your dominant planets: among the facets of your character, you have a grave and serious side, wise and somewhat severe, since your concentration can be powerful, to the detriment of carelessness and friendliness.

You often look austere, but it is only an appearance, a kind of modesty or reserve; however, it is true that the Saturnian, who is fond of time, effort, asceticism, rigour and sobriety, may have popularity issues. Nevertheless, honesty and straightforwardness, reliability, as well as slow, wise and deep mental process, although not very popular and visible qualities, eventually become noticed and appreciated. Saturnians' second part of life is usually easier and more fulfilling.

Like the Jupiterian, your Saturnian facet prompts you to seek the essential, security, and longevity. However, the difference with the former is that you will never give priority to wealth or "the bigger, the better" philosophy for the sake of power. Saturn, like Jupiter, symbolizes social integration, and it is usually considered positive to have a harmonic Jupiter and Saturn in one's chart because of their social adaptation capacities.

Your vulnerability lies in your too serious and austere side, which may lead to unwanted loneliness and affective frustration. This generally does not last because Saturnians often hide deep down a golden heart that ends up revealing itself...

Jupiter, the planet of expansion, organization, power and benevolence, is quite emphasized in your chart. Like any Jupiterian, you are warm, open, sociable, consensual, active and optimistic. You can use your self-confidence to erase differences of opinion, and you leave the task of analyzing and perfecting things to specialists. Your role, and you know it since you were young, is to gather, to demonstrate your synthesizing and conciliatory mind, and to naturally reap its fruits - power.

You appreciate legality, social order but also order in general. With you as a leader, every plan or human entity can be organized and structured. You excel at supervising. The Jupiterian type is indeed the politician par excellence, and a positive Jupiter in your chart is synonymous with good integration into society, whatever the chosen path.

Is this idyllic picture really perfect? Certainly not: each planet's typology has its own weaknesses. One of yours is pride, like the Solarian, but your will of expansion at all costs may generate a form of exaggeration in everything, endless pleasure, inappropriate self-confidence that could lead you to rough materialism and the thirst for absurd material comfort - in the worst cases, of course.

Uranus is among your dominant planets: just like Neptune and Pluto, Uranian typology is less clearly defined than the so-called classical seven planets that are visible to the naked eye, from the Sun to Saturn. However, it is possible to associate your Uranian nature with a few clear characteristics: Uranus rhymes with independence, freedom, originality, or even rebelliousness and marginality, when things go wrong...

Uranus is Mercury's higher octave and as such, he borrows some of its traits of character; namely, a tendency to intellectualize situations and emotions with affective detachment, or at least jagged affectivity.

Therefore, you are certainly a passionate man who is on the lookout for any kind of action or revolutionary idea, and you are keen on new things. Uranians are never predictable, and it is especially when they are believed to be stable and well settled that... they change everything - their life, partner, and job! In fact, you are allergic to any kind of routine, although avoiding it must give way to many risks.

Your Dominant Signs



In your natal chart, the three most important signs, delineated according to the above-mentioned criteria, are, in decreasing order of strength, Aquarius, Gemini and Cancer. They are often prominent because your Ascendant and your Sun are posited there. However, it is not always the case: it may be because they are occupied by a cluster of planets, by a planet near an angle other than the Midheaven and the Ascendant, or because two or three planets are very active and form numerous aspects from these signs. Therefore, you partly take on the three signs' characteristics, which are somehow superimposed on your natal chart, and all the more so if any of the signs in question is highlighted.

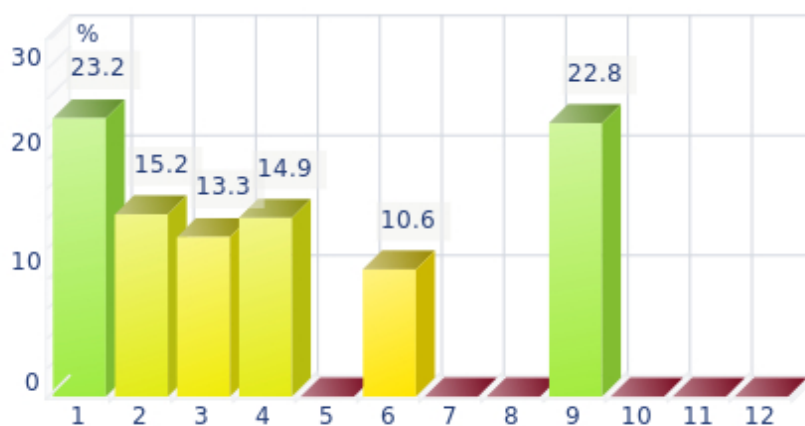
Aquarius is one of the most important signs in your natal chart: it endows your personality - at least one of its facets - with originality, to the point of eccentricity, in spite of a sometimes distant and humane side. Likeable and impassive at the same time, you are a paradoxical man, very hard to define because the two planets Uranus and Saturn blend their qualities to create the so complicated and endearing sign that inspires your character. Saturn's seriousness and impassivity is added to Uranus' rebellion, talent,

individualism, charisma, extravagance, and unpredictability! One of your main characteristics is that you never open up on a personal basis, but you tend to do so easily in public. You are actually quite strange. Sexy and charming in public, despite your nice and sociable character, you could frustrate many of your admirers in private because of your impossibility to show deep and warm affection, emotions, tears... But appearance and reality are two different things anyway - you are a kind of a genius, or you have at least a tremendous charm with this sign. You have many friends and an active social life. If you are detached in your love life - only in this aspect, since the rest of chart will confirm it or not - this is no big deal!

With Gemini as a dominant sign, your qualities include being lively, curious, mobile, clever, and flexible: you often make others dizzy, and you may come across as a dilettante - a bit inquisitive, shallow, and insensitive because you may be too intellectualizing. However, your natural curiosity, a nice quality, and your quick humour, allow you to demonstrate to everyone how much they may gain from your company, and that your apparent flightiness hides an appetite (particularly mental) for life, which itself conceals a terrific charm!

Cancer is one of your dominant signs and endows you with imagination and exceptionally shrewd sensitivity. Although suspicious at first sight - and even at second...- as soon as you get familiar with people and let them win your confidence, your golden heart eventually shows up, despite your discretion and your desire for security that make you return into your shell at the slightest alert! Actually, you are a poet and if you are sometimes blamed for your nostalgia and your laziness, it is because your intense inner life is at full throttle...

Your Dominant Houses



Houses 1, 9 and 2 are the most tenanted ones in your natal chart. To compute their strength, planets and angles are weighed according to various astrological criteria such as swiftness, activity, angularity, rulership etc. From the analysis of the most tenanted Houses, the Astrologer deduces the fields of activity that are most relevant to you, be it because of what you are experiencing, or what you may experience in the future, or because of your deep inner motivations.

With a dominant 1st house, your magnetism is powerful, and your individuality as well as your willpower are out of the ordinary. You are a determined, strong-willed, and assertive person, with this relative criterion at least.

It is likely that you never go unnoticed when you are in a crowd or in a reunion: an important 1st house

suggests that you are a charismatic person with above average vital energy, especially if the Sun is present in this sector.

Your personal interests are always important and you never forget them, which doesn't mean that you are self-centered, but only that you behave according to what is in harmony with your deep nature!

Your 9th house being one of your most tenanted house, or at least emphasized, travels and faraway places play a major role for you: travels may take place in a symbolic sense, namely mind speculations or conceptions about political matters, philosophy, religion or spirituality, or in the literal sense, such as real long distance travels by plane. It may also be that you spend a part of your life far from home, etc. You are driven by some kind of rebelliousness, which urges you to explore the Unknown; it may also be the call of the adventure. Besides, if the rest of your chart concurs, you may be considered as a real draught, often up hill and down dale, constantly on the lookout for exciting discoveries and new, enchanting horizons.

The 2nd house is among your three most tenanted houses: life's material aspects - with everything that is implied in terms of security, appetite for life, desire for possession - are deep-seated and you can never be content with living on love and fresh air. On a more abstract level, you may have similar feelings regarding relationships: possessiveness and jealousy in the worst cases, but also faithfulness and durability.

Your Style, Behaviour, and Peculiarities

What is commonly known as "sign" indicates the position of the Sun in the Zodiac. The Sun highlights all the characteristics of the sign he tenants. According to astrology traditional rules, these characteristics are all the more pure and exact when the Sun is strong in the sign, or when the sign is particularly highlighted within the chart. Here, we indicate the pure characteristics of the sign but you must bear in mind that they may only shed a light on a particular aspect of your personality. Indeed, the sole sign of the Sun, or of the Ascendant, can never describe an astrological chart because it depends on the degree of strength of the said sign in your chart.

Another important point must be underlined. Contrary to the Ascendant, which clearly describes your appearance, your vitality, your physical constitution, your spontaneous behaviour and the image you project, your Sun sign describes your inner self, which you may not completely be aware of, and which may emerge gradually as you mature: it is about your inner personality that you reveal only to the members of your entourage whom you trust. The Sun sign is likely to be the final form of your personality, once it has evolved in line with the energies of the other parts of your chart, the beginning of which is seen in the Ascendant, your external "bark".

The Ascendant is one of the major components of your natal chart. It is the zodiacal sign that rises in the East at the very moment of your birth. To calculate it, it is therefore necessary to know your exact time of birth.

It provides with a wealth of information on your personality. It is one of the key features that allows the analysis of several parts of you, such as your appearance, your character as it is initially perceived and your immediate behaviour. It describes the external aspect of your personality which you always display, but it also describes your physical constitution in the long-term, in other words, your health.

Please be aware that, in spite of the importance of the Ascendant, the accuracy of its description depends on how strongly highlighted it is in your natal chart. We use the entire set of astrological rules to assess the strength of the Ascendant. In most cases, the Ascendant is as revealing as your "sign", i.e., the sign where the Sun is posited at the time of birth.

You were born under the sign of Leo and your Ascendant is in Gemini

Before broaching the details of the meaning of your Sun and your Ascendant, as a preamble, we offer a brief generic interpretation of their combination in your chart:

You have an extroverted and relaxed nature which may border on inconsideration. Your slickness is terrific. Both Leo and Gemini are open to the people surrounding them, they tend to impose their presence and meddle in everything. It is easy to imagine you making as many contacts as you can, bustling about here and there, and avidly devouring all kinds of knowledge with intellectual detachment or nervousness. You keep your leonine warmth for your friends and relatives, and you treat them with magnanimity and pride. People who do not know you well perceive only your communicative and playful facet. Sometimes, you do the splits between your objectives, which are necessarily noble, and the superficial and natural polyvalence of your facade. You are highly appreciated for your humour and your theatricality, and also because you know very well how to look your best. In a word, one never gets bored

with you!

You were born with the Sun in Leo

Psychologically speaking, your nature is powerful and self-assured. You are a leader whose strength and nobleness naturally arouse your entourage's respect and adherence and your legitimacy is unquestioned. Your sense of commandment, the honour your person constantly exudes, your prestige and your charisma is a whole which puts you into the spotlight wherever you go.

As you are born under this sign, you are proud, determined, wilful, loyal, solemn, generous, ambitious, courageous, heroic, full of vitality, creative, confident, seductive, happy, daring, proud, majestic, honest, magnanimous, charismatic, responsible, noble, brilliant, radiant, dramatic, affectionate, full of humour, demonstrative, swaggering and self-confident. You can also be domineering, conceited, touchy, authoritarian, stubborn, intolerant, self-centered, irascible, violent, and nonchalant.

In love, Sir, you are very demanding. You are a powerful and loyal lover. Your partner must be the most beautiful and the most brilliant person and she must make you feel that she admires you. In such a case, your generosity has no limit and you give your love without reservation, with nobleness, liberalities and luxury. You set up a stable and brilliant home where children have the essential part.

The main danger is that you value trust to the extent that you grant it generously but too hastily: if you happen to find out that your trust is misplaced, the whole world around you crumbles and the relationship is forever damaged. In this regard, you are cut-and-dried and you feel so hurt and humiliated that you seldom can forgive.

Another similar danger comes from the fact that your expectations are very high and it is very unlikely that real life offers such unconditional and lasting love: for this reason, it is not unusual that you never marry, all the more so because your self-centered character is not prone to self-questioning...

Your Ascendant is in Gemini

Your mobility is such that you are in every place where you are not expected. You spend lots of time asking questions and... answering them. Your curiosity and your quick-wittedness are insatiable. Your mind is in constant turmoil, hopping from one topic to another, solving problems, accumulating anecdotes and knowledge within a short range of time. Your mobility is mostly mental, it takes you afar and turns your daily life into a mosaic of intense and pleasant moments that are not necessarily related to one another...

As you are born under this sign, you are nervous, expressive, lively and adaptable, with a quick mind and a good sense of humour. You are bubbling, playful, sociable, clever, curious, whimsical, independent, intellectual, flexible, ingenious, fanciful, imaginative, charming, cerebral, and you are into everything. You may also be whimsical, unfocused, quirky, superficial, indiscreet, opportunist, unmindful, selfish, sarcastic or mercurial.

in love, Sir, you increase the number of your love affairs, probably because you do not want to give up your freedom too quickly. You are cerebral to the extent that games of seduction remain... a real game, where feelings and carnal pleasures are merely present.

Paradoxically, you are very charming and attractive but you are more interested in the game itself. Indeed, thrills of verbal joust, fun, the pleasure to communicate over and over again, remain the centres of your concerns.

You clearly prefer to be a bachelor because you appreciate its hustle and bustle: outings, exciting parties or a wide range of encounters etc. However, when you meet with your soul mate, you turn into a pleasant and charming partner, although you may not be around too often!

The ruler of your chart is in Cancer

The ruler of the Ascendant, also referred to as the chart ruler, brings a few interesting nuances to the meanings provided by the Sun and the Ascendant. The sign in which the ruler of the Ascendant is posited fine-tunes the style of personality described by the Sun and the Ascendant. It may strengthen it if the sign is identical to either of them.

The ruler of the Ascendant, Louis de Funès, is Mercury. In the sign of Cancer, it enables you to grasp the surrounding ambience and impressions as if you were an emotional radar. Therefore, you may shift from enthusiasm to boredom or rejection, should you subtly sense that you are appreciated or spurned, even though your feelings are unfounded.

Aspects to your Ascendant

Several planets form an aspect with your Ascendant, Louis de Funès. Therefore, in their specific way, they modify your behaviour and your personality, which do not take on the pure characteristics of your Gemini Ascendant only, but which are a blend of its characteristics with those of the said aspects.

★★★★★ Saturn conjunction Ascendant, orb 2° 23'

Saturn is in conjunction with your Ascendant, Louis de Funès. In general, this aspect endows you with a responsible and serious behaviour, sometimes even imbued with solemnity. This configuration brings about a cautious and thoughtful side, may be to the detriment of spontaneity. With this conjunction, you appreciate being in control rather than indulging in laid-back attitudes, although it might imply being carried away into unknown territories, which you definitely are wary of.

★★★★★ Pluto conjunction Ascendant, orb 6° 2'

Pluto is in conjunction with your Ascendant, Louis de Funès. The planet of taboos, power, secrets, and instinct endows your behaviour with an uncontrollable domineering note which is not negative as such. At the same time, it also provides you with exceptional lucidity. In spite of yourself, Pluto prompts you to discover people's secrets, to provoke them in order to better understand their "truth". Your mysterious and slightly frightening magnetism is definitely part of your seduction!

★★★☆☆ Mars square Ascendant, orb -4° 15'

When Mars is in dissonance with the Ascendant, Louis de Funès, in some particular circumstances, it may translate into hastiness, and even hostility on your part, which your entourage may not understand. You have audacity galore, but it is up to you to show alertness, so that you don't come across as a short-tempered person unable of self-control.

★★★★★ Uranus sesqui-quadrant Ascendant, orb 0° 25'

This dissonance of Uranus with your Ascendant endows you with a rebellious, original, and unpredictable side, which gives your behaviour a note of dynamism and nonconformism. Of course, other people are sometimes deeply disconcerted by your attitude which does not fit classical or social standards, and you may suffer its consequences, meaning that you feel misunderstood, incorrectly perceived, and considered as a disturbing free electron, or an untrustworthy person. You must remain true to yourself, but at the same time, you must exercise some caution in order not to fall prey to unpleasant misunderstandings.

★★★★★ Jupiter trine Ascendant, orb 6° 25'

Jupiter in soft aspect with your Ascendant naturally endows you with a reassuring, calm, and benevolent side, Louis de Funès. You honour your commitments without qualms, and thanks to your heart of gold and your generosity, your behaviour is protective and nice. You like to please other people, and whenever it is possible, you enjoy finding compromise solutions to all problems.

★★★★★ Venus square Ascendant, orb -7° 18'

In certain circumstances, Louis de Funès, you tend to adopt an attitude that is not necessarily in line with your real emotions. This discrepancy between your behaviour and your feelings, caused by Venus, may disconcert the people you mix with. Have self-confidence, don't be too pushy or... withdrawn, and forget your fears. Then, people can have a better perception of your personality, and you can harvest the fruits of your efforts.

Your Sensitivity

Your sensitivity is intuitive and clear-sighted Louis de Funès. Your exacerbated affectivity and your emotions are secretive, intense, deep and sensual. Your magnetic nature seduces. You are aware of the strange fascination you exert and you gladly cultivate this mysterious aura. Your feelings are so powerful that you may feel you should repress them sometimes. But the more you try to control them, the stronger they grow. Therefore, your jealousy may reach such levels that it may hurt. Without half-measure, you become aggressive and you can harm because your inner radar instinctively detects other people's weaknesses. Your emotions are often filled with eroticism and you are an explosive blend of lucidity, amorous intensity and constant provocation but... you are so charming! Your nature is attractive, even bewitching. After all, the only persons you offend are the middle course followers...

Louis de Funès, it is likely that you are popular in your work environment, and you may even be considered to be some kind of star by your colleagues. Or, if it is not the case, you have a clear tendency to react emotionally, very quickly and strongly in this sphere. At work, you need to feel liked and appreciated and to be shown accordingly!

You are mobile and changeable in your profession, and to tell the truth, your everyday life is full of surprises. Sensitive and imaginative, you are vulnerable to others' opinions. Health issues concern you more than they should; beware of not becoming a hypochondriac, some day...

★★★★★ Moon sextile Mars, orb -0° 04'

Your vivid imagination goes hand in hand with your desire to make your dream come true and to struggle, so as to remain true to yourself. You easily mobilize your energy and your resources. This harmonic Moon-Mars aspect indicates the will to keep your intimate balance under all circumstances. You thrive in action; you court danger, particularly when your regular environment is endangered. In the private sphere, you exhibit complete straightforwardness. This planetary configuration allows you to quickly get back on your feet within a new context. You adapt well to unprecedented situations. Your capacity to integrate events rapidly can only increase your adaptation abilities.

★★★★★ Moon square Jupiter, orb -2° 05'

When this aspect is not well integrated, there is a tendency to conceal your true nature and to cheat on your true self. Appearance, emphasis and games hide the essence of your aspirations and may trouble your intimate life. Despite your apparent joviality, it is often difficult for you to live in conformity with your inner demands. Actually, it is difficult for you to reconcile your social life with your private life. The former excludes the latter. To properly integrate this aspect, you must learn to harmonize your external attitudes (social and professional ones) with your daily rhythms. It implies that, when you are in a trustworthy situation such as your family or your home, you accept to behave differently from when you are in a larger context, exposed to social stress. You must neither ignore them, nor should you favour them.

★★★★★ Moon sextile Venus, orb 2° 58'

The harmonious Moon-Venus aspect is an element of intimate balance that favours sensual and affective fulfilment. The search of well being includes all kinds of emotions and feelings. You love, you enjoy life in simple ways and you arouse your entourage's affection. The persons belonging to your inner circle are also objects of desire and pleasure. Tenderness and love are probably one and only thing: you are moved by the gestures of affection provided to you and by the daily acts which strengthen two persons' mutual attachment. Whereas other people dread routine, in your case on the contrary, it increases your amorous

feelings. You loathe all kinds of violence, particularly in your intimate life. The danger of this planetary configuration may be your constant changes of mood: whims are often on the agenda... and your will is quite weak. One last point: this aspect is frequently found in the charts of people with an aesthetic or artistic sensitivity.

★★★★★ Moon trine Neptune, orb -7° 28'

This harmonious Moon-Neptune aspect indicates an exceptional receptivity. You are sensitive to ambiances and you can grasp what is at stake in any given situation. You can pick up things in the general atmosphere that the majority of people miss out. Your deep intuition allows you to feel the subtlest details, that « little nothing » which is the key to behavioural patterns. Inspiration is your guide and imagination accompanies your daily rhythms. Mysteries, psychology, esoterism, fantasy, the supernatural... one of these fields, at least, is of concern to you. You pay utmost attention to your inner life, to moments of tranquillity when you relax, when you allow your mind to wander at will. The danger is that you may seek refuge in the imaginary and that you shirk reality.

★★★★★ Moon bi-quintile Saturn, orb -0° 43'

This harmonious Moon-Saturn aspect is an element of stability for your private life. Your daily life lives up to your demands, you are totally true to yourself and logical through your very intimate behaviour. You do not choose the easy way out: on the contrary, it is in difficult situations that you are at your best. It is very unlikely that you become destabilized by trifles. This aspect indicates stability and also perfectionism. You are longing for a private life respectful of your heart of hearts and your genuine desires. Your well being is at this price, and its quest remains perpetual. Despite your reserved private behaviour, your emotions run very deep. You have a strong need for protection and for security. Your aspirations lead you towards contemplation or studies, more than towards social utilities.

Your Affectivity

In your chart, the Sun is in Leo, and Venus, in Virgo. Leo is in love with love, anxious to shine and to be up to any promising situation. On the other hand, Virgo is more anxious to organize her realm than to expand her territory; she needs to control the elements at her disposal rather than to enlarge her sphere of activity. These contradictions are probably reflected in your affective behaviours: whereas your ambitions and your models bring about an offensive mind and you are absorbed in your intense thirst for domination, your desires and your natural tendencies are more balanced and reserved. Therefore, the image you project may conceal your true nature, which is sentimental, sensitive, modest and vulnerable. It is part of your charm but it is also your Achilles' heel: quid pro quos may come from the image you strive to give of yourself because, inevitably, it is distorted by your will to unreasonably show off. Your natural dignity (commendable as long as it is not exaggerate) is much to your credit, but it may also be the source of misunderstandings. Does the person who loves you know your affective aspirations? Mutual trust is one of the fundamental keys to your fulfilment. When passion and wisdom get along well, you become able to give of your best.

Louis de Funès, inside yourself, feelings are strong and powerful. However, you never show them before weighing up and considering all the possible consequences of your words and your actions: fieriness and spontaneusness are toned down because you cannot help controlling yourself, probably due to your modesty, your discretion or your shyness; you are frightened because you are so concerned with other people's opinion that you see passion, or expressing your feelings too quickly, as sources of danger.

However, you are helpful, simple, and you do not fuss around. Reason prevails in your love life but your heart may flare up when the context is well organized and everyday life is cautiously handled with good sense, tidiness and cleanliness. Your sensitivity prompts you to avoid excesses and outbursts and this is how you think that you can achieve happiness without risk.

Louis de Funès, for a fulfilling sentimental life, you need a stable and securing family basis from where you can eventually look at the outside world and give free rein to your love agitations: even though you have had a loving and caring family environment during your childhood, and you now want the same secure and warm feeling to endure, at any cost, or if, on the contrary, fate had turned your childhood into a painful period with lots of emotional loneliness and you now want to obtain, at any cost, what you had been deprived of in the past, for the rest of your entire life, the harmony of your family structures will remain an absolute necessity for you, lest you feel unable to do your utmost. As a matter of rule, you also need security in the literal sense before you can be at your best and, as you start a serious relationship, one of your first preoccupations is to purchase or to beautify the necessarily cosy and opulent-looking nest for your new couple. You value interior decoration as much as security and you will spend lots of time hunting refined artistic works that will match your inner feelings: secrete, warm, reassuring but not extravagant.

★★★★★ Venus conjunction Mars, orb 3° 03'

With this aspect, innate affective behaviours prevail over opportunisms and calculations. You do not cheat with feelings and you prefer to be guided by your likes ... or your dislikes. Love is neither to be reasoned upon nor to be explained. It is important to experience one's passions spontaneously and to give free rein to the heart's tumultuous manifestations as well as to the body's demands. In other words, to be one's true self in the "now". You need to live intensely, to try all kinds of situations, sometimes to get hurt. Your sensitivity is the driving force behind your decisions and your actions. Real experiences are worth the best intellectual concepts. Spurred by your thirst for emotions, you try to build your life on bases that match your desires. Here, the trap may be that you pay too much attention to your moods and affects. But without them, life would be so dull. Even though emotionalism betrays you occasionally, it remains your best ally.

★★★★★ Mercury sextile Venus, orb -1° 38'

This aspect sensitizes you to games of seduction. You like to multiply romantic undertakings, you invent new reasons to seduce or to be seduced. Although your romantic life is not a model of stability, it is full of discoveries, varied emotions, both sensual and cerebral. You know how to earn your entourage's liking through your acute sensitivity. You play around with feelings, with relationships and with love... Mercury and Venus commonly share the capacity to sensitize to human topics. Your receptivity towards others is high. Your broad-mindedness goes hand in hand with your heart's generosity. You pay particular attention to the way people look at you and the effect you make when you meet or exchange with someone. Actually, you expect a lot from others: acknowledgement of your qualities, as well as esteem and consideration. You may also be touchy beyond what you may give to think. In many instances, relationship games may turn out to be more serious than expected.

★★★★★ Venus inconjunction Jupiter, orb 0° 53'

This Venus-Jupiter dissonance indicates a strong will to seduce. However, there may be discrepancies between your words and your actions, as well as between your behaviour and your instinctive reactions. You may be carried away by a maelstrom of emotions, feelings and pleasures and you do not consider the possible consequences of your superficial attitude. Therefore, the apparent state of grace may turn

into delusion. Proprieties and necessities of the moment forbid you to experience your desires. What you deem reasonable does not suit your heart's impulses. What a dilemma... Hopefully, as time goes by, you may reconcile your desires, your life patterns and the reasons of your heart with those of your mind.

The Way You Take Action and Your Sexuality

Louis de Funès, you skilfully make use of your energy and you are like the arrow that reaches its target with great precision: with piercing eye and sharp mind, you take action meticulously and efficiently. Like the surgeon with his scalpel, you know exactly what you want and you belong to the category of specialists, not the generalists. Critical, pernickety, extremely organized, you want to foresee and to analyze. You prefer to master your business too well rather than not enough, even if you must put a huge, sustained, long lasting effort into it. Sexually, you remain fanatical about cleanliness. You may be prone to fantasies such as fetishism. Your love life is fine if you avoid the unforeseen events that you loathe.

It is in the private sphere that your capacities for action are felt, Louis de Funès. When you are outside, at work or elsewhere, you do not like to show your true self.

But as soon as you are at home, no doubt, you almost shift identity. You become active and full of energy. You enhance your family environment, you upgrade your personal projects, and you want to take the driver's seat! If not, you move about, and you show your authority, sometimes a bit forcefully.

You are as conciliating and gentle outside as you are inflexible and authoritarian at home. Things had better be moving, or else!

★★★★★ Mars square Saturn, orb -6° 39'

Why should you take action? And how? The surrounding world is not to be trusted. Past events have taught you to question simple situations and to intervene after thorough consideration. You are vulnerable to the traps of life, to confrontations and struggles. You may complicate your behaviour at will, often missing your target due to your self-censoring. Your interventions may lack spontaneity. You must overcome your doubts and acquire the certainty that you are able to handle realities and facts. If you make that effort, you can understand that there are many ways to make life simpler for yourself.

★★★★★ Sun semi-square Mars, orb -1° 04'

This aspect shows impulsivity, a fiery character and sensitivity all on edge. The excess of strength and energy may jeopardize your life balance and cause impulsive and unconsidered actions. Your ideals are not always in line with your deeds. You are certainly reactive and you stand for yourself heroically. But your untimely fits of anger may worsen existing tensions and bring about incontrollable situations. Facts contradict your aspirations. When this configuration is properly reined in, it becomes an inexhaustible source of passion and energy.

★★★★★ Mars inconjunction Jupiter, orb -2° 09'

You mobilize your energy as soon as there is an opportunity to turn your chances into concrete reality. You assert yourself in a spectacular and demonstrative manner as soon as an assembly gathers and there is a chance for success. However, too much haste and zeal may harm your projects and spoil your expected outcome. The danger with this aspect is your overzealousness as you strive to achieve your objectives and your ambitions, forcing your way through events, whereas the situation requires

diplomacy and patience. Too much fieriness may make you miss your target. With this planetary configuration, it is important that you keep in mind that some circumstances need to be handled with precision and clear-sightedness. Not all opportunities are necessarily good. It would be a pity to lose your efficiency through excesses of opportunism or of enthusiasm.

Your Intellect and Your Communication Style

Your intelligence is sensitive and delicate, with good comprehension abilities, Louis de Funès, which endows you with a strong intuition and receptivity. To you, impressions and feelings prevail over facts and your excellent selective memory is not cluttered with useless elements. Although you are not aware, your fertile imagination may lead you to change your daily reality so that it matches your dreams better. If you are creative, you may make use of your imagination in literary pursuits where you can freely invent beautiful stories taking place in the past. Your passion for History is such that you may immerse yourself into it with too much nostalgia and therefore, you may miss opportunities the present offers to design projects and to think of the future.

You have your feet on the ground and a particularly well-developed practical good sense, Louis de Funès. With you, no excessive emotions or fuzzy, abstract thoughts: you know where you are heading to, and your sharp and clear intellect usually enables you to efficiently manage your personal affairs.

You may be stubborn and concerned about your earnings and your success, particularly in the financial area, where your intellectual abilities are remarkably exploited. You manage to get out of a tight spot thanks to your logical mind and clear vision.

★★★★★ Moon trine Mercury, orb 1° 19'

Curiosity is part of your nature. You perceive everything with sharp acuity. You increase your attempts to establish connections and to exchange opinions and information, particularly when you are in a familiar and intimate context. When this configuration is well integrated, it underlines the multi-faceted nature of the mobility that defines your behaviour and your living conditions and endows you with strong adaptation abilities. You also show a remarkable gift for improvisation and you pick up the quality of the atmosphere so swiftly that you get off any tricky situations. However, you must keep your adaptation capacity under control because when it is overdeveloped, it may become an agent for instability.

★★★★★ Mercury sextile Mars, orb 1° 24'

The harmonic Mercury-Mars aspect is the signature of a quick wit and an energetic character. You take decisions rapidly and you implement them straight away. You never accept stiff situations. You need to design, to take action, to fight to express your acute sense of relation: the world, the people, everything is of concern to you... You need to be involved in relationships and in dialogues. Your sharp retorts earn you a reputation of straightforwardness. On the relations' area, your quick wit and your mobility are greatly appreciated. You find the allies and partners you need at the right time. An art of resourcefulness that is precious...

★★★★★ Mercury inconjunction Jupiter, orb 0° 45'

You play with social norms and you scoff at them. Your morality is seldom questioned: you adopt the most rewarding behaviour, precisely the one that wins you your entourage's consideration. But you sometimes cheat. You are an opportunist and you act according to circumstances, particularly because

your moral stand is only a superficial mask. You enjoy concealing your beliefs: life is a social game and you change its rules to suit your convenience. Your flexibility and your adaptation abilities are appreciated. However, it is important that you do not behave inconsistently. A stable and transparent course of conduct may help you avoid many pitfalls or delusions. Beware of words spoken thoughtlessly, of empty promises, and do stick to your indisputable cleverness.

★★★★★ Mercury conjunction Neptune, orb 8° 48'

Your sense of psychology and of human intimate mechanisms is acutely developed. Your relations are nuanced, clever and guided by a good intuition of individuals. Without effort, you pick up what is at stake in relationships and in contacts. Your « sixth sense » inspires you and may take you into strange roads. On the relations' plane, there is an indisputable subtlety. You know what you should not say or, on the contrary, you naturally find the suitable words. Your natural and non-rational attitudes often prove right. The unknown fascinates you... Your curiosity for occultism and mystery is keen. Besides, life is a huge human enigma for you.

Your Goals, Motivations, Career, and Destiny

Your Sun is posited in the 3rd House

Your intellectual mobility and your curiosity are remarkable, Louis de Funès. Your entire will is at the service of your inextinguishable thirst for knowledge and contacts. You are interested in communication and in occupations where you can move and express your ideas, such as journalism, literature or writings in general, trade, recruitment, laws etc.

Early in your life, you notice that your skills as a speaker and a mediator are impressive. As you mature, you can use these assets to carry your professional or personal projects through a successful conclusion. You like to move about in the proper sense and to visit your numerous contacts, in order to embrace and fulfil your need for communication.

You may play a rewarding role towards your siblings, if you have any. Or a sibling plays an important part in your destiny.

When things do not follow the course you want them to, because of your propensity to communicate too much and to move frenetically, you may be subject to conflicts within your neighbourhood and your family (again, as always...). You may have accidents when you are paying your visits and you may also be the target of your colleagues' harsh criticisms.

The ruler of your chart is in the 2nd House

The ruler of the Ascendant, also referred to as the chart ruler as explained in a previous chapter, is also posited in one of the twelve Houses of the chart. Just like the Sun in his House, the ruler of the Ascendant provides certain abilities, or it makes you appreciate more keenly certain areas of life.

The ruler of your chart is in the 2nd House, Louis de Funès. This position in the House of money earned through work may facilitate the way you deal with financial matters, and may give you the desire to work even harder. Your material situation often improves at the age of thirty.

Aspects influencing your ambitions

Regarding your destiny or your career, the following aspects of your natal chart allow to fine-tune what has just been said above:

★★★★★ Sun opposite Uranus, orb -2° 46'

This Sun-Uranus dissonance indicates a dazzling will to be the centre of attention and to proclaim your specificity, by all means. This aspect belongs to the rebel and the revolutionary restive to all forms of authority and of model. To balance this interpretation, the strong need for autonomy bordering on frenzied individualism must be highlighted. You allow nothing or no one to hinder your chosen line of conduct. Obviously, your attitudes are inflexible. You prefer to continue to the bitter end, even when you are wrong, rather than to be more open to people's ideas. Tyrannical attitudes often turn against the perpetrator... However, this configuration is a powerful agent for creativity, provided your hothead and extremist nature is kept under control.

★★★★★ Jupiter conjunction Midheaven, orb 3° 57'

Jupiter, the most beneficial planet of the Zodiac, is in conjunction with your Midheaven, your destiny, Louis de Funès. It is undeniably an auspicious configuration which favours your social ascent or your professional destiny, which are often influenced by your respect for the law, and your natural self-confidence. These qualities remove pitfalls out of your way. With this very nice configuration, your profession or your destiny may also be linked to values symbolised by Jupiter: prominent political figure, medical doctor, businessman, judge, solicitor, or any respectable occupation.

★★★★★ Moon square Midheaven, orb 1° 52'

There is a dissonance between the Moon and your Midheaven, Louis de Funès. It may indicate a discrepancy between your sensitivity and the goals you set for yourself in life, although this dissonance seldom plays out dramatically. You may feel that your emotions sometimes catch you off your guard in society, and that the level of your popularity is not too satisfactory, without your knowing the reasons why. In some cases, females may thwart your social ascent.

★★★★★ Saturn trine Midheaven, orb 4° 51'

Thanks to this soft aspect between Saturn and your Midheaven, your long-term efforts and your perseverance are rewarded, and you gradually climb up the stairs of success. Time is your ally as far as your career and social destiny are concerned. Carry on the good work, and rest assured that your seriousness and your obstinacy are appreciated. They are instrumental in your success, especially during the second part of your life.

★★★★★ Sun conjunction Neptune, orb 8° 4'

This harmonious Sun-Neptune aspect indicates a highly developed intuition and clear-sightedness and sometimes, a sixth sense. Mental images or information drawn from the unconsciousness impress your mind. What was only a muddled feeling turns into certainty and deep conviction. You do not necessarily need to justify your attitudes: you take a decision because you feel that you have to do so, although you may not control the underlying logics. The danger is that you may follow fanciful or adventurous roads. Beliefs you cannot explain may prove wrong or over-optimistic. However, your intuition is seldom misleading. One last comment: there is often a keen curiosity for the « bizarre » and the paranormal with this planetary aspect.

★★★★★ Mars inconjunction Midheaven, orb 1° 48'

Because Mars is in dissonance with your Midheaven, in some circumstances, you may feel misunderstood, Louis de Funès. In society, you may even feel hostility towards you as you try to climb up the steps of your professional life, or when you strive to reach a higher social status. Your efforts may be resented. You must be twice as careful as you usually are and tone down your behaviour in order not to be rude to other people, even though from your viewpoint, and it is actually most often the case, it only has to do with misunderstandings or some eagerness on your part.

Your Assets and Your Part of Joviality

Your mental activity, your enthusiasm when you handle your projects, especially the collective ones, are very favoured by this planetary configuration: one of your best qualities, Louis de Funès, is your capacity to be integrated in a group and at the same time, to keep your originality intact. As a natural consequence, your friendships are favoured and your protections last throughout your life.

Jupiter brings you a heaven-sent present, Louis de Funès, which is particularly nice because there is here an analogy between the planet and the house. Jupiter's broad, benevolent and warm vision of life is in line with the fields of higher education, philosophy, politics, and human sciences symbolized by the 9th House. As you mature, you radiate with wisdom. On the concrete plane, long-distance travels are very favoured, throughout your life.

The planet Jupiter symbolizes expansion, broadness and generosity. Jupiter is associated with the functions of synthesis, enthusiasm and optimism. In your natal chart, his house position is more important than his sign position because, like Saturn, Uranus, Neptune and Pluto, he is a slow planet. Many people born in the same period have Jupiter in the same sign. This is the reason why the sign occupied here is less meaningful than when it is occupied by the so-called fast planets, i.e. the Sun, the Moon, Mercury, Venus and Mars. Therefore, some caution is to be exercised as you read what follows.

Jupiter in Aquarius stimulates your mental activities and favours the area of collective or humanitarian projects. In these fields, you can easily assert your originality and develop your interests for new topics and unusual things in general: sciences, higher technologies, but also esoterism, astrology and occultism. Your friendship life is favoured too by this configuration.

Your Serious Side

Your liveliness and your superficiality are slowly transformed into secondarity, profundity of reflection, and interest for knowledge, contacts and logic.

Solemnity, seriousness and discipline are your keywords, Louis de Funès. It is difficult for you to relax, and it is most likely that at the beginning of your life, you are shy, quite introspective, and distant. You may be worried even though you have no reasons to do so. Your doubts may be overwhelming to the extent that they affect your vitality.

As time goes by, thanks to your strong will, your serious side becomes an asset for your success. You learn spontaneity, risk-taking, and lightness, and you are less concerned with the image you project because, in your heart of hearts, there already are hindsight, solemnity, and some sort of wisdom!

The planet Saturn symbolizes contraction, effort, time, limitation and concentration. Saturn eliminates anything that is not authentic, sooner or later. It is impossible to cheat him as he gives an irresistible desire to form a coherent whole with oneself, in responsible and wise ways. He is the great purifier. He represents our limitations but also our truth. In your natal chart, the house position where Saturn is posited is more important than his sign position because, like Jupiter, Uranus, Neptune and Pluto, he is a slow planet. Many people born in the same period have Saturn in the same sign. This is the reason why the sign occupied here is less meaningful than when it is occupied by the so-called fast planets, i.e. the Sun, the Moon, Mercury, Venus and Mars. Therefore, some caution is to be exercised as you read what follows.

Saturn in Gemini decreases your lightness, your frivolousness, and your heedlessness. You become more thoughtful, more concentrate and you learn to deeply funnel your ideals; your practical sense is increased, your concern for punctuality and your thirst for precision are reinforced.

A Few Special Points

Your Uniqueness and Your Utopias

Your ideas and revolutionary concepts, at odds with what really exists, make you appear as a pioneer in your area. In your concrete life, several important trips are significantly involved in major turning points. Your instinctive need for strangeness, as well as your thirst for independence, must be given a positive outlet.

Sometimes, your positions are original to the point that they become marginal, and your dyed-in-the-wool desire for expatriation exposes you to undergo reversals that are as explosive as unexpected. More than anyone else, you must guard against fanaticism or the systematic exploration of remote and dangerous lands, even though the call of the unknown or of exoticism is deeply rooted in you and you find it hard not to respond!

On a more symbolic plane, you are generally interested in abstract topics which are out of the ordinary such as metaphysics, religions, sociology, philosophy, etc.

Your Inspiration and Your Illusions

Your relationship to money is particularly vague. You tend to avoid analyzing your financial resources, as though this topic were neither important nor real. You belong to the category of people who never know how much they have in their bank account and in their purse.

This approach is positive in that, if you have a strong sixth sense, you can get good bargains more easily than other people... It may be some sort of blindfolded fortune, although there are real dangers of losing a lot and of being deceived.

Beware not to overstep legal boundaries, lest someday your carelessness in the financial area gets you into big troubles. It would be a pity if what you earned, thanks to your sixth sense, were taken away from you.

Your Passion and Your Authority

Your close friends are aware that your underlying tension may break open as soon as you feel threatened or when your honour is tarnished by ambiguous actions or talks. You have an innate taste for power, and you exude a strong form of magnetism and authority.

Your need to transform both your environment and your personality may prompt you to display aggressiveness. But more often than not, it remains a form of blackmail in order to dominate others, something similar to the chess principle that “threat is better than implementation”.

Your Isolated Planets

In general, the ten planets of the chart are connected to other planets by major or minor astrological aspects. It is owing to those ties that the planets' energies can manifest in the chart owner's personality and play out within safeguards according to a specific tonality.

It seldom happens that in a natal chart, a planet is totally disconnected from the nine other planets.

Astrologers have observed that when such a case occurs, the person feels the energy of the unaspected planet in quite a singular way, very jerky and powerful at the same time. Thus, for instance, the famed astrologer Jean-Baptiste Morin de Villefranche wrote that "an unaspected planet heralds that something strange or extraordinary will take place regarding the meanings of the house in which the said planet is posited" (source : l'astrologie selon Morin).

Rules for detecting an unaspected planet: among all the testimonies that we have reviewed to this day, based on our experience, we tend to agree with American astrologer Janis Huntley who accepts seven aspects, which involve the zodiacal twelve sections of 30 degrees. The aspects to be considered are the conjunction (0 degree, cooperation or tension), the semi-sextile (30 degrees), the sextile and the trine (60 and 120 degrees respectively, aspects of cooperation), the square and the opposition (90 and 180 degrees respectively, tensed aspects), and the quincunx (150 degrees, slightly tensed). In this detection, the chart's angles are not taken into account.

In any case, it is important to remember that an isolated planet clearly expresses its influence when it is a personal planet. Thus, when the Sun, the Moon, Mercury, Venus, or Mars is isolated, it is certain that the effects described by Jean-Baptiste Morin de Villefranche will become manifest. As for Jupiter, Saturn, Uranus, Neptune, and Pluto, one must be cautious because the volume of cases documented is not yet large enough.

Your chart has no isolated planet, and this particular case does not apply to you.

Annex 1: Your Minor Dominants

The five following dominants are less significant than those described at the beginning of your report. They may not be strongly felt. In some cases, they add several minor details to the analysis of your character, but they are rather for curiosity purposes. It is not necessary to take them into account when you first read your portrait.

Your Planetary Repartitions: Northern, Southern, Eastern and Western Hemispheres

The axis linking the 1st house's cuspide (the Ascendant) to the 7th house's cuspide - the Descendant - divides the zodiac into two bowls, a superior bowl, in the South, and an inferior bowl in the North. Quoting an expression by the famous American astrologer Rudhyar, the Southern part and the Northern part correspond to two functions: "being" and "doing". Other concepts are also associated with this North and South distribution, such as introversion - Northern hemisphere - and extraversion - Southern hemisphere - being or appearances, inner life or external life, reflection or action, dreaming one's life or living one's dreams, the abstract or the concrete, backstage or limelight.

This is not about determination but about personal inclination: thus, some people will be thrown into public life despite a prominent Northern hemisphere. If this happens, however, it will not be due to their will, their taste or their deep nature. Conversely, a prominent Southern hemisphere will not bring about a famous destiny to its owner, even if he tends to turn the spotlight on himself, or if he looks for a more active life. It is a matter of deep nature and natural inclination. Of course, none of the typologies is "superior" to another.

In your birth chart, Louis de Funès, the ten main planets are distributed as follows:

Your Northern and Southern Hemispheres



Louis de Funès, the predominance of planets in the Northern hemisphere prompts you to reflect and imagine rather than to exteriorize your actions and to be at the forefront of the stage. So, should you wish to remedy this situation, it is up to you to force your nature to take action in broad daylight, to communicate, and to assert yourself... then, you can move forward in this concrete life and enjoy your newly won situation.

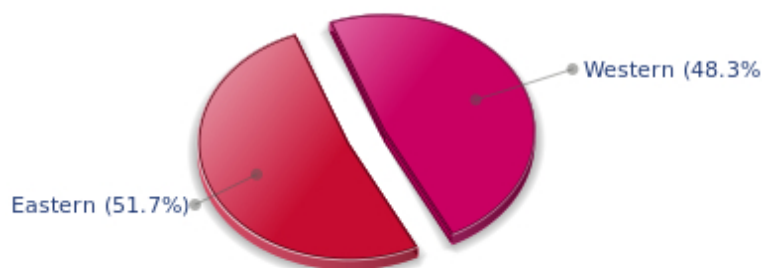
The birth chart is divided into two other parts, Eastern and Western, by the axis linking the Midheaven

to the Imum Coeli.

The Eastern part, on the Ascendant side, shows the person's ego, will, magnetism, and vitality, whereas the Western part, on the Descendant side, symbolizes other people, communication, relationships and their influence, as well as flexibility and adaptability.

Louis de Funès, here is the planetary repartition in your Eastern and your Western hemispheres:

Your Eastern and Western Hemisphere:



Louis de Funès, the East and West sides are well balanced in your chart. This means that you are not too determined or authoritarian, and that you are neither impressionable nor fragile. You are capable of taking decisions, in full awareness, without anyone's help when circumstances so require. However, you have no problem taking your entourage's viewpoints into consideration, with tact and intelligence.

Your Yin and Yang Polarity

The twelve signs are divided into two polarities, called active or passive, or sometimes masculine and feminine, positive and negative, Yang and Yin. This classification corresponds to two quite distinct tonalities, the first one bringing extraversion, action, self-confidence and dynamism, the second one, introversion, reactivity, reflection and caution. None is superior to the other, each group has its own assets and shortcomings. Odd signs - Aries, Gemini, Leo, Libra, Sagittarius and Aquarius - belong to the first group, whereas even signs - Taurus, Cancer, Virgo, Scorpio, Capricorn and Pisces - belong to the second group.

Your Yin and Yang Polarity



According to the disposition and qualities of your planets and angles, you are rather influenced by Yang energy, the active polarity, Louis de Funès: more concerned about actions than reflection, you sometimes rush without standing back and without the deepness that is needed. However, your spontaneity prompts you to take fresh starts, even after repeated failures caused by your rashness.

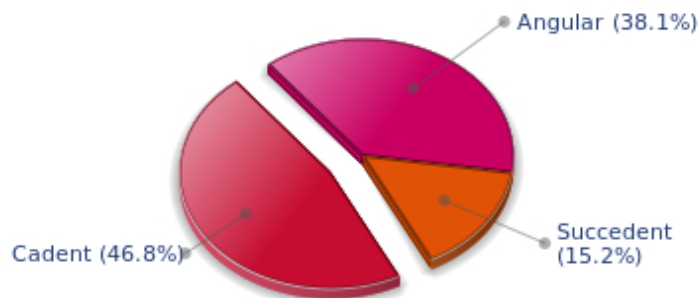
Your Houses' Accentuations

Houses are split up into three groups: angular, succedent and cadent.

The first ones are the most important ones, the most "noticeable" and energetic houses. They are the 1st, 4th, 7th and 10th houses. Their cuspides correspond to four famous angles: Ascendant for the 1st house, Imum Coeli for the 4th house, Descendant, opposite the Ascendant, for the 7th house and Midheaven for the 10th house, opposite the Imum Coeli.

Planets are evaluated according to a whole set of criteria that includes comprehensive Western astrology rules. At their turn, planets emphasize specific types of houses, signs, repartitions etc., as previously explained.

Your Houses' Accentuations



Cadent houses, namely the 3rd, 6th, 9th and 12th houses, are very emphasized in your chart, Louis de

Funès. They indicate important potential for communication, adaptability and flexibility. These houses are symbolically linked to the mind and intellect. The relative weakness implied by these characteristics indicates your tendency to hesitate or to be indecisive, but also your remarkable ability to start off again, which is a nice quality, finally: you can easily get yourself out of a tight spot thanks to your mobility and casualness, in the best sense of the term. This group of houses corresponds to evolutionary characteristics of your personality. However, they are only indications and you must include them in the rest of your chart in order to see whether they are validated or not!

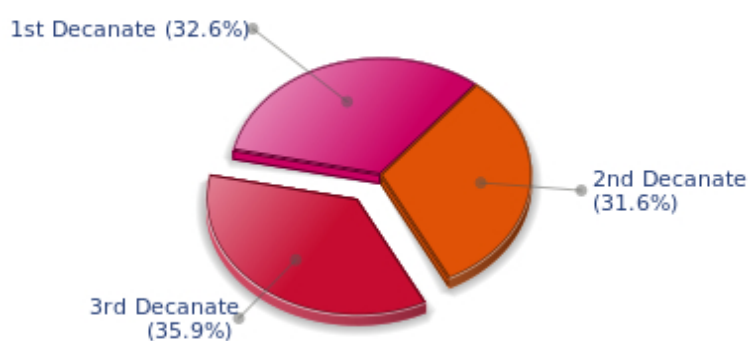
Your Esoteric Decanates

Each sign contains 30 degrees and can be divided into three equal parts: the decanates. The Tradition indicates that specific meanings can be associated to each of the three decanates. Their sphere of activity is usually limited to the Sun sign, however, it is even more interesting to observe the distribution of all the planets in the chart to get an idea of the respective importance of the three decanates, which can complement the description of the personality.

These meanings must be considered with the greatest caution. Indeed, they are minor characteristics that can only underline other outstanding traits of character.

Traditionally, the first decanate highlights the characteristics of the sign where a planet is located. The two other decanates correspond to sub-dominant planets, depending on the nature of each sign. This system leads to a multiplication of meanings and it is impossible to have a clear understanding: here, we prefer to give only the meaning of one decanate in comparison with the other two, within the birth chart as a whole. Again, the greatest caution is needed with regard to this minor indication as it is not always reliable: it is not essential that you read these texts in the beginning. You can get back to them later on, once you have read more important interpretations

Your Esoteric Decanates



The third decanate, which means the part between 20° and 30° of any zodiacal sign, prevails in your natal chart, Louis de Funès. It contains the degrees of spirituality, traditionally more delicate to deal with, since they incline towards evolution and therefore, destabilizations. Individuals with an emphasised third decanate may have deeper sensitivity than most people, which often brings ordeals but also spiritual rewards.

Annex 2: Karmic Study

The karmic theme is a good complement to the psychological portrait, or natal chart. This analysis is based on the positions of the Lunar Nodes, the Black Moon and the Part of Fortune: they are also called fictitious points and describe the spiritual purpose of your destiny. Because there is in all of us an experience and a quest, our life is an evolutionary journey... provided that we head towards the right direction, of course! Indian astrologers highly prize the Nodes axis (North Node and South Node). It is the Ariadne's thread that we are invited to follow. The Black Moon indicates the sector where we are most likely to transform or to transcend, whereas the Part of Fortune points out the area where we can easily express our specificity.

The Lunar Nodes: a spiritual path

Lunar Nodes have their roots in the Indian tradition and they are based on a simple concept: each of us have a mission of their own, here on earth, a destiny, a course. According to the Indian philosophy, life is a school: the nodal axis describes our past experiences (South Node, our karma, our spiritual inheritance or our previous lives), and our aims on earth (North Node, our Dharma, the purpose of our current incarnation). This is the reason why the study of the lunar nodes is called "Karmic astrology". Here, we shall not step into hypothetical past lives. Wherever our current trends may come from, all that really matters is that we become aware of the purpose of our life, its finality and our dharma. We are likely to understand our life purpose around the age of 37, when the Lunar Nodes return to their natal position.

Your doings indicate the challenge to dedicate an important part of yourself to devotion and abnegation. Life imposes a few sacrifices on you, whether agreed upon (and voluntarily taken up) or imposed by daily vagaries. Very early you showed a sharp critical sense and your attitudes were rational, logical and reasonable, although individualistic. As time goes by, you learn to make concessions and to offer an essential part of yourself so as to outgrow the "every man for himself" principle. Ordeals are meaningful: people may not respond to your games and your entourage may thwart your plans and your ambitions... You may need to achieve the "old souls" detachment, those beings who have learnt that only essentials are to be kept – inner life or survival- and who know that this world "petty things" are vain. Better than anyone else, you cope with situations of crisis because, whatever the circumstances, there is a hidden spiritual dimension and a springboard for evolution. You will slowly get to know the art of accepting things without going back on what you have said or done. Compassion and altruism become the central theme of your life.

Your life is marked with the major challenge of developing your social image, of asserting your personality... and of leaving your shell. Your childhood and your family roots are very present. You have an inclination for quietness, protections and intimacy. You enjoy at will the moments when you feel "at home", in known territory and familiar situations. But you must learn to thrive in society, to give of your best, to socially shine, particularly when you feel that external pressure and opinions are upsetting. Do not fall in the trap of your dreams and souvenirs! Life implies responsibilities and the will to control, otherwise you cannot feel your true self. You may be too dependent and you must learn to slowly become autonomous, free to take decisions and to take action. Your sense of duty allows you to climb all the steps of a perilous, yet thrilling, social ladder. As years go by, you claim more autonomy, more power and more freedom of action.

Lilith or the Dark Moon

The Black Moon is the spark of refusal and distance that is dormant in all of us. Depending on the sign where she is found in your chart, she highlights the desire to transform and to sublimate a part of your life. The Black Moon is unfathomable and mysterious. She gives a different dimension to the sector she touches. Her manifestations are subtle; nonetheless, she is powerful, implacable, demanding to the extreme... The Black Moon is also called Lilith. She is the inner flame of your heroism and insubordination.

Your refusals are irrevocable: you may show violence when the situation is stuck... When facts hamper your aspirations, when everything does not seem to start moving soon, you tend to force your ways through events, regardless of the price to be paid. Your strengths and your weaknesses stem from all that: you may exercise a misplaced extremism, claiming great causes, whereas order can be restored in the simplest of ways. However, better than anyone else, you know how to maintain the pressure whenever it is needed, when the desire for deep changes takes precedence over submission or abdication.

It is in the humanitarian field that rebellion is best expressed. Your dream is to become the spearhead for a different project of society, the Quixote of altruism. Each individual must be independent, really free to think and to act. Any hindrance to free will makes you indignant! The danger is that you may not tolerate any external constraint. This is probably the price to be paid for a freedom of thought that constitutes the core of your progression.

The Part of Fortune in House

The Part of Fortune is a very ancient fictitious point that depends on the lunar phase at the time of birth. The astrological house tenanted is particularly strengthened. In your chart, the Part of Fortune is in the 10th house: you give top priority to your social status and to the level of your "rank". You are very ambitious and you have every chance to achieve social and professional successes. You identify yourself with the part you are to play and with the expectations of your environment. Therefore, you can fully blossom through the adherence to the collective pattern that you are the first one to understand and that you personify. In other words, deep down, you are what your entourage admires and respects: you have a job that is "under the spotlight" and you fulfil your responsibilities as if you were in charge of a "mission".

Retrograde Planets

The karmic tradition insists on the issues related to the so-called retrograde planets. They are considered to be the inheritance of a past that was not well experienced, a sort of unfinished business. The interpretations of the retrogradation may seem negative or excessive to you. However, you may relate to a scenario that you have often and repeatedly experienced... as if you underwent several setbacks that all have the same cause. Until the day you become aware of it and you can free yourself from it! Through the slow integration of these planetary energies, you will be able to overcome your difficulties and to pay your karmic debt. Actually, each retrograde planet highlights an opportunity for evolution. Nothing can be achieved without the will to grow spiritually and to defeat your own demons.

With Jupiter retrograding on the day of your birth, the lesson is about grasping the opportunities that are offered to all of us but that some people take advantage of, while others don't. Persons who quickly adjust to circumstances are more likely to achieve their ambitions than those who need to be encouraged

to take action. During your childhood, you may not have efficiently responded to life's concrete enticements, leaving other "luckier" people to achieve what you were dreaming of. You preferred to enjoy yourself, here and now, rather than to look for new paths of development or exploration. It is possible that you were not optimistic enough. Enterprising minds were alien to you... Later, you find out that, indeed, you give little importance to the credit of the frenzied expansion praised by the modern world. Your path is not oriented towards personal prestige. With subtlety, you integrate non-material values and you accept well the fact that you missed past opportunities.

Uranus was retrograding on the day of your birth: you have the soul of a rebel and your behaviour may often be tyrannical or extremist. Your manner has brought you setbacks. You lack the flexibility that spares you the pain of forcing your ways through events. The danger may be that you get trapped into rigid patterns and into personal logics incompatible with others'. This is precisely what your life's lesson is about: as years go by, your judgments are more qualified and your attitudes become less cut-and-dried, less stubborn. You must lose the essentially individualistic character of your childhood and be more open to other people's ideas and problems. In other words, a path of love. Without losing your remarkable resolution, you must practice some form of renunciation and be sensitive to various logics that constitute the wealth of your social life.

N.B: modern astrology attaches less and less importance to the principles of retrograding planets.

Conclusion

A few remarks are needed here in order to allow you to fully take advantage of your astrological portrait: firstly, do not forget that a birth chart is also a photograph of the sky at birth and a structure that not only contains the personality's characteristics, but also its potential evolution.

We all know that, in real life, people begin to know themselves when they are in their forties, or even later. Likewise, several traits of character in a portrait may seem surprising: in most cases, it means that such features are not yet developed.

Some personalities reveal themselves late in life, whereas others are more precocious. It must be remembered that psychological structures are in a state of continuous evolution because they are influenced by unfolding events and gradual maturity. We can never underline strongly enough the "mobile" nature of the personality, throughout a lifetime.

On the other hand, it is difficult to discriminate what is "already present" at this moment in your life when you are reading your chart's interpretation, from what will appear later in the logic of your evolution: you must sort out all the pieces of information provided and, in most cases, you will see that your astrological portrait is helpful for your endeavours to know yourself better.

Finally, several readings of an astrological portrait are usually necessary in order to absorb all its different meanings and to evaluate the relevance of each character trait.

In any case, better self-knowledge obviously contributes to faster personal blossoming, and it is undoubtedly one of astrology's major roles: contributing to know oneself better, in order to improve more rapidly, to deal with one's weaknesses and to avoid its drawbacks, and to take advantage of one's assets as efficiently as possible.
