



# Lionel Messi's Astrological Portrait





## Lionel Messi's Astrological Portrait



<b>Introduction</b>	<b>2</b>
<b>Your Planets, Houses, Aspects, and Natal Chart</b>	<b>4</b>
<b>Preamble</b>	<b>6</b>
<b>Your Planetary Repartitions</b>	<b>7</b>
<b>Your Dominant Modes and Elements</b>	<b>8</b>
<b>Your Dominants: Planets, Signs and Houses</b>	<b>9</b>
<b>Your Style, Behaviour, and Peculiarities</b>	<b>14</b>
<b>Your Sensitivity</b>	<b>18</b>
<b>Your Affectivity</b>	<b>19</b>
<b>The Way You Take Action and Your Sexuality</b>	<b>20</b>
<b>Your Intellect and Your Communication Style</b>	<b>22</b>
<b>Your Goals, Motivations, Career, and Destiny</b>	<b>23</b>
<b>Your Assets and Your Part of Joviality</b>	<b>25</b>
<b>Your Serious Side</b>	<b>26</b>
<b>A Few Special Points</b>	<b>26</b>
<b>Your Isolated Planets</b>	<b>27</b>
<b>Annex 1: Your Minor Dominants</b>	<b>29</b>
<b>Annex 2: Karmic Study</b>	<b>33</b>
<b>Conclusion</b>	<b>36</b>



# Lionel Messi's Astrological Portrait

## Introduction

To fully benefit from this portrait, we suggest that you read its introduction and its preamble carefully, and then that to take the time to soak up the interpretations of each chapter. Given the large number of texts, which mirrors the human being's complexity, you may need to go through the contents several times, so as to get a good grasp of their meaning and to know yourself better. This will reward your patience.

The purpose of this report is to describe your psychological portrait and to highlight the most fundamental features on the personal area. The report begins with the analysis of your planetary dominants and outlines your personality's general traits before going into further detail. Minor dominants are analysed at the end of Annex 1, for purposes of clarity. Your report then delineates the various facets of your personality:

In general, even when relationships are not involved, we express ourselves and we feel according to our character and our personal motivations: this is indicated by the Ascendant and the Sun sign which both give details on the way we function. They shed a tremendously important light which allows to figure out your personality. Here, we describe your Sun sign (your inner self), your Ascendant (your behaviour as seen by others), and the ruler of the Ascendant (interesting additional pieces of information about the style of your personality). These descriptions alone cover nearly a third or a half of your psychological signature, depending on your natal chart characteristics.

Then, we address your sensitivity, or in other words, the way you receive things and how you express your emotions ; it works as a constant filter for all your exchanges, even when it becomes a more secondary element in your amorous relationship, because at that moment, affectivity prevails. Sensitivity is the way you perceive things, it is your radar, your daily mood, and at the same time, it indicates how you react to your entourage, on a daily basis. It is what others immediately see of you. In the second paragraph, we explain in which areas of life your sensitivity and your emotions are strongest, therefore, where you are most vulnerable.

After this, it is your affectivity, the way you love and how you charm, that comes into play as soon as you fall in love: the first part indicates its basic structure or its main form. The second part describes the areas where it is best expressed and how you display it, according to your personality.

A third fundamental area deals with your mode of action and your sexuality: how you behave, how you manage to obtain what you want, what kind of desires you have. There are twelve possibilities, very

different from one another. The study discloses the specific one that applies to you. In the second paragraph, we explain in which life areas you may most efficiently take advantage of your capacity for action and for conquest.

Your ways of communicating and of thinking are obviously among the major elements that must be integrated into the delineation and the description of your personality. Indeed, they influence your general behaviour and may modify or enhance the image your project (for instance, extraversion may “compensate” a weak affectivity, but a huge number of cases are possible). An additional chapter indicates the favourite areas where you enjoy communicating, thinking and meeting with people.

Besides, we analyze an even more personal aspect that is important to define and understand what may occur within your couple: each of us have a centre of interest, a privileged manner to be fulfilled or to achieve our destiny; this main motivation is indicated by the positions of your Sun and your chart ruler in the astrological houses and we provide you with its detailed description.

A natal chart contains the potential for specific fulfilment and a whole range of assets, protections and qualities. How does the lucky factor manifest in your personality? In which area can you best exploit your qualities? The answers are precisely revealed to you in this chapter.

On the other hand, we all feel in us a part of vulnerability, doubts and fears. How does this part of solemnity or serious side play out? How is it possible to handle it in order to evolve and to get rid of useless elements? All this information is provided to you in these two paragraphs.

Then, you can discover three additional traits of your personality that must be considered as secondary ones. They deal with your predispositions, which means that they need to be triggered by external events because they are not influenced by your will; let's call it a part of fate. Please, bear in mind that your destiny can unfold only in accordance with what you are: therefore, even if they belong to your more unconscious self, these characteristics are parts of you, definitely.

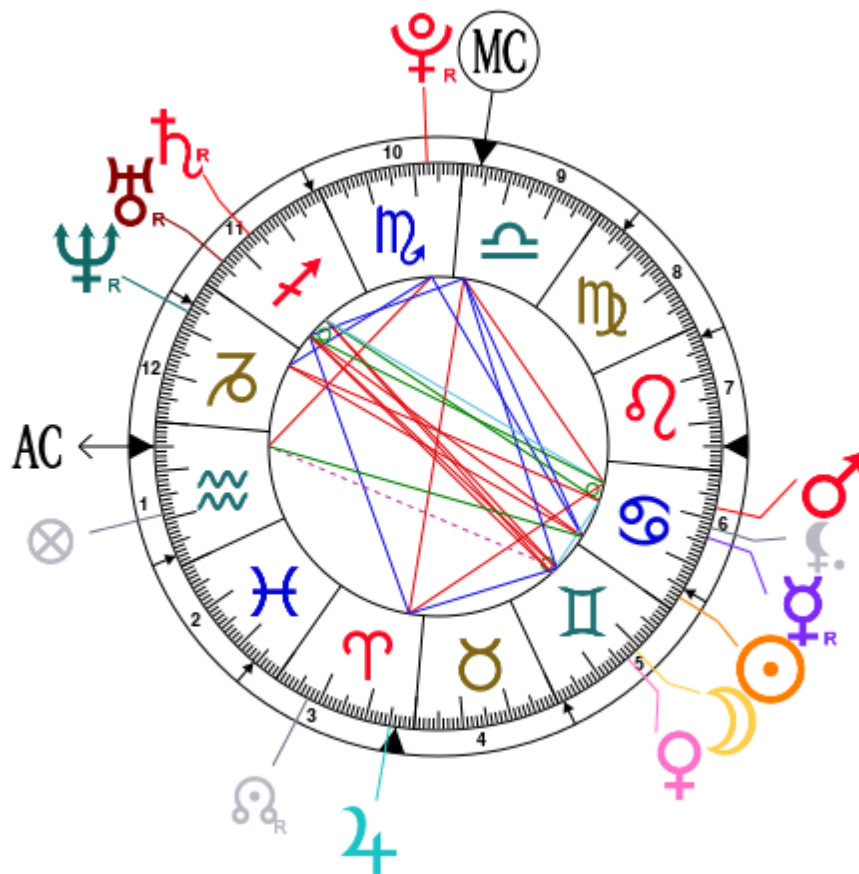
The karmic chart complements the psychological portrait or natal chart. It is based on the positions of the Lunar Nodes, the Black Moon, and the Part of Fortune. These elements of the chart, sometimes referred to as fictitious points, provide information about the spiritual meaning of your destiny. Owing to the fact that we all have in us acquired knowledge and the urge to go on a quest, our life is an evolutionary journey... However, these texts must be read with great caution: this is the reason why you will find this analysis in the Annex 2 of your report.

# Your Planets, Houses, Aspects, and Natal Chart

Lionel Messi, born June 24, 1987, at 08:30 PM, Rosario (Santa Fé), Argentina [60.40W ; 32.57S ; 3W00]

Natal Planets			In House	Natal Houses (Placidus)		
☉ Sun	2°55'	♋ Cancer	House 5	House 1	4°59'	♒ Aquarius
☾ Moon	19°03'	♊ Gemini	House 5	House 2	27°38'	♒ Aquarius
☿ Mercury	16°16' R	♋ Cancer	House 6	House 3	24°26'	♓ Pisces
♀ Venus	16°45'	♊ Gemini	House 5	House 4	26°20'	♈ Aries
♂ Mars	22°30'	♋ Cancer	House 6	House 5	1°12'	♊ Gemini
♃ Jupiter	25°02'	♈ Aries	House 3	House 6	4°49'	♋ Cancer
♄ Saturn	16°44' R	♐ Sagittarius	House 11	House 7	4°59'	♌ Leo
♅ Uranus	24°23' R	♐ Sagittarius	House 11	House 8	27°38'	♌ Leo
♆ Neptune	6°44' R	♐ Capricorn	House 12	House 9	24°26'	♍ Virgo
♇ Pluto	7°18' R	♏ Scorpio	House 10	House 10	26°20'	♎ Libra
♁ Node	7°34' R	♈ Aries	House 3	House 11	1°12'	♐ Sagittarius
♇ Lilith	18°21'	♋ Cancer	House 6	House 12	4°49'	♐ Capricorn
AS AS	4°59'	♒ Aquarius				
MC MC	26°20'	♎ Libra				

In keeping with the common practice, we consider that a planet posited within 1 degree of the next house belongs to that house. We allow an orb of 2 degrees for the ASC and the MC.



## List of Your Active Planetary Aspects

Please find below the list of all the active inter-aspects which are interpreted in this report, in addition to your planets in sign, in house, and all your planetary dominants. Since the aspects between slow-moving planets are of a collective nature, they are not displayed, in compliance with our interpretation rules.

- ★★★★★ Sun opposite Uranus, orb -8° 31'
- ★★★★★ Sun opposite Neptune, orb -3° 48'
- ★★★★★ Sun trine Pluto, orb 4° 22'
- ★★★★★ Sun inconjunction Ascendant, orb -2° 03'
- ★★★★★ Sun trine Midheaven, orb -6° 35'
- ★★★★★ Moon conjunction Venus, orb 2° 17'
- ★★★★★ Moon sextile Jupiter, orb -5° 59'
- ★★★★★ Moon opposite Saturn, orb -2° 18'
- ★★★★★ Moon opposite Uranus, orb -5° 2'
- ★★★★★ Moon sesqui-quadrant Ascendant, orb -0° 56'
- ★★★★★ Moon trine Midheaven, orb 7° 16'
- ★★★★★ Mercury semi-sextile Venus, orb -0° 28'
- ★★★★★ Mercury conjunction Mars, orb 6° 13'
- ★★★★★ Mercury inconjunction Saturn, orb 0° 27'
- ★★★★★ Mercury opposite Neptune, orb -9° 32'
- ★★★★★ Venus opposite Saturn, orb -0° 01'
- ★★★★★ Venus opposite Uranus, orb -7° 37'
- ★★★★★ Mars square Jupiter, orb -2° 32'
- ★★★★★ Mars bi-quintile Saturn, orb 0° 13'
- ★★★★★ Mars inconjunction Uranus, orb 1° 53'
- ★★★★★ Mars square Midheaven, orb 3° 49'
- ★★★★★ Jupiter opposite Midheaven, orb -1° 17'
- ★★★★★ Uranus sextile Midheaven, orb -1° 56'
- ★★★★★ Pluto square Ascendant, orb -2° 19'

## Meaning of Stars

Stars indicate the strength of the aspects. Two solid coloured stars (there are half-stars also), mean that the aspect is powerful enough to be noticed at the first reading.

We strongly advise that you read the paragraphs displaying less than two stars later on, after you have absorbed the full import of the other texts.

The yellow colour indicates a soothing and conciliating aspect, and the red colour, a dynamic and tense aspect. The red aspects enable you to evolve, to take action, and to learn to turn your "weaknesses" into assets through your life experiences. The yellow aspects are innate strengths on which you rely in order to grow better with the former...

## Preamble

When interpreting a natal chart, the best method is to start gradually from general features to specific ones. Thus, there is usually a plan to be followed, from the overall analysis of the chart and its structure, to the description of its different character traits.

In the first part, an overall analysis of the chart enables us to figure out the personality's main features and to emphasize several points that are confirmed or not in the detailed analysis: in any case, those general traits are taken into account. Human personality is an infinitely intricate entity and describing it is a complex task. Claiming to rapidly summarize it is illusory, although it does not mean that it is an impossible challenge. It is essential to read a natal chart several times in order to absorb all its different meanings and to grasp all this complexity. But the exercise is worthwhile.

In brief, a natal chart is composed of ten planets: two luminaries, the Sun and the Moon, three fast-moving or individual planets, Mercury, Venus and Mars, two slow-moving planets, Jupiter and Saturn, and three very slow-moving planets, Uranus, Neptune and Pluto. Additional secondary elements are: the Lunar Nodes, the Dark Moon or Lilith, Chiron and other minor objects. They are all posited on the Zodiac wheel consisting of twelve signs, from Aries to Pisces, and divided into twelve astrological houses.

The first step is to evaluate the importance of each planet. This is what we call identifying the dominant planets. This process obeys rules that depend on the astrologer's sensitivity and experience but it also has precise and steady bases: thus, we can take into account the parameters of a planet's activity (the number of active aspects a planet forms, the importance of each aspect according to its nature and its exactness), angularity parameters; (proximity to the four angles, Ascendant, Midheaven, Descendant and Imum Coeli or Nadir, all of them being evaluated numerically, according to the kind of angle and the planet-angle distance) and quality parameters (rulership, exaltation, exile and fall). Finally, other criteria such as the rulership of the Ascendant and the Midheaven etc. are important.

These different criteria allow a planet to be highlighted and lead to useful conclusions when interpreting the chart.

The overall chart analysis begins with the observation of three sorts of planetary distributions in the chart: Eastern or Western hemisphere, Northern or Southern hemisphere, and quadrants (North-eastern, North-western, South-eastern and South-western). These three distributions give a general tone in terms of introversion and extraversion, willpower, sociability, and behavioural predispositions.

Then, there are three additional distributions: elements (called triplicity since there are three groups of signs for each one) - Fire, Air, Earth and Water - corresponding to a character typology, modality (or quadruplicity with four groups of signs for each one) - Cardinal, Fixed and Mutable - and polarity (Yin and Yang).

There are three types of dominants: dominant planets, dominant signs and dominant houses. The novice thinks astrology means only "to be Aries" or sometimes, for example, "to be Aries Ascendant Virgo". It is actually far more complex. Although the Sun and the Ascendant alone may reveal a large part of the character - approximately a third or a half of your psychological signature, a person is neither "just the Sun" (called the sign) nor just "the first house" (the Ascendant). Thus, a particular planet's influence

may be significantly increased; a particular sign or house may contain a group of planets that will bring nuances and sometimes weaken the role of the Ascendant, of the Sun sign etc.

Lastly, there are two other criteria: accentuations (angular, succedent and cadent) which are a classification of astrological houses and types of decanates that are occupied (each sign is divided into three decanates of ten degrees each). They provide some additional informations.

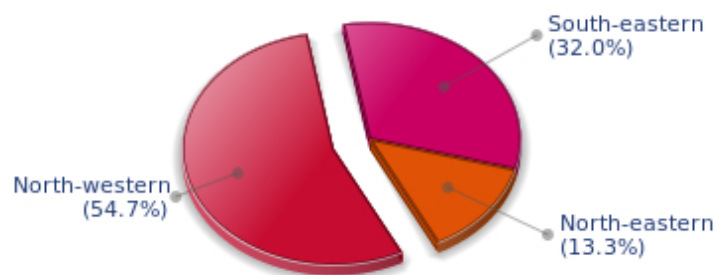
These general character traits must not be taken literally; they are, somehow, preparing for the chart reading. They allow to understand the second part of the analysis, which is more detailed and precise. It focuses on every area of the personality and provides a synthesis of all the above-mentioned parameters according to sound hierarchical rules.

As explained in the introduction of your Psychological Portrait report, minor dominants are analysed at the end of Annex 1, for purposes of clarity.

## Your Planetary Repartitions

Each quadrant is a combination of the four hemispheres of your birth chart and relates to a character typology. The Southern hemisphere – the top of your chart, around the Midheaven – is associated with extraversion, action, and public life, whereas the Northern hemisphere prompts to introversion, reflexion, and private life. The Eastern hemisphere – the left part, around the Ascendant – is linked to your ego and your willpower, whereas the Western hemisphere indicates how other people influence you, and how flexible you are when you make a decision.

### Your Four Quadrants



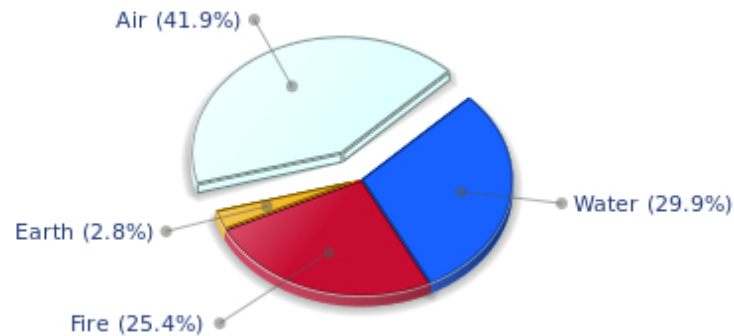
Lionel Messi, the nocturnal North-western quadrant, consisting of the 4th, 5th and 6th houses, prevails in your chart: this sector favours creativity, conception and some sort of specialization or training, with helpfulness and relations as strong components. You need others' cooperation in order to work properly, although you are not very expansive: creating, innovating and thinking are what matter most to you because this self-expression enriches you and totally satisfies you.



## Your Dominant Modes and Elements

Lionel Messi, here are the graphs of your Elements and Modes, based on planets' position and angles in the twelve signs:

### Your Four Elements



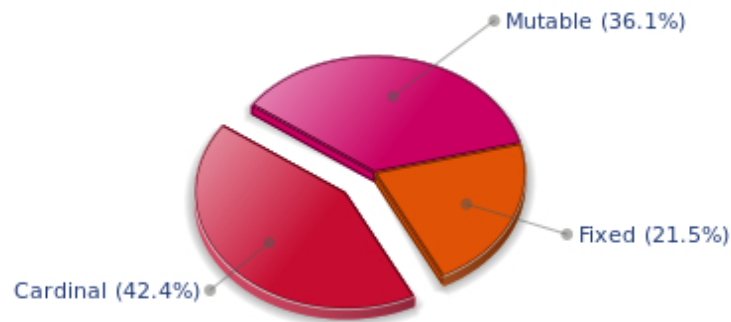
Cheers for communication and mobility, Lionel Messi! The predominance of Air signs in your chart favours and amplifies your taste for relations and for all kinds of short trips, whether real (travels) or symbolic (new ideas, mind speculations). You gain in flexibility and adaptability what you lose in self-assertion or in pragmatism.

The predominance of Water signs indicates high sensitivity and elevation through feelings, Lionel Messi. Your heart and your emotions are your driving forces, and you can't do anything on Earth if you don't feel a strong affective charge (as a matter of fact, the word "feeling" is essential in your psychology). You need to love in order to understand, and to feel in order to take action, which causes a certain vulnerability which you should fight against.

Earth qualities are under-represented in your chart, with only 2.76% instead of the average 25%. Deficiency in Earth may indicate that you have no interest in material and concrete values. It is likely that you live too much in your heart or in your mind, or even in your enthusiasm! The fact remains that you may end up in tricky situations, due to your lack of good sense or forethought: material life is unavoidable even if you are rather idealistic, dreamy, or easily content. You must tackle concrete life necessities, for fear of... being forced to cope with them, later, in much more unpleasant ways!

The twelve zodiacal signs are split up into three groups or modes, called quadruplicities, a learned word meaning only that these three groups include four signs. The Cardinal, Fixed and Mutable modes are more or less represented in your natal chart, depending on planets' positions and importance, and on angles in the twelve signs.

## Your Modes



Lionel Messi, the Cardinal mode is dominant here and indicates a predisposition to action, and more exactly, to impulsion and to undertake: you are very keen to implement the plans you have in mind, to get things going and to create them. This is the most important aspect that inspires enthusiasm and adrenalin in you, without which you can grow weary rapidly. You are individualistic (maybe too much?) and assertive. You let others strengthen and improve the constructions which you built with fervour.

## Your Dominants: Planets, Signs and Houses

The issue of dominant planets has existed since the mists of time in astrology: how nice it would be if a person could be described with a few words and one or several planets that would represent their character, without having to analyse such elements as rulerships, angularities, houses, etc!

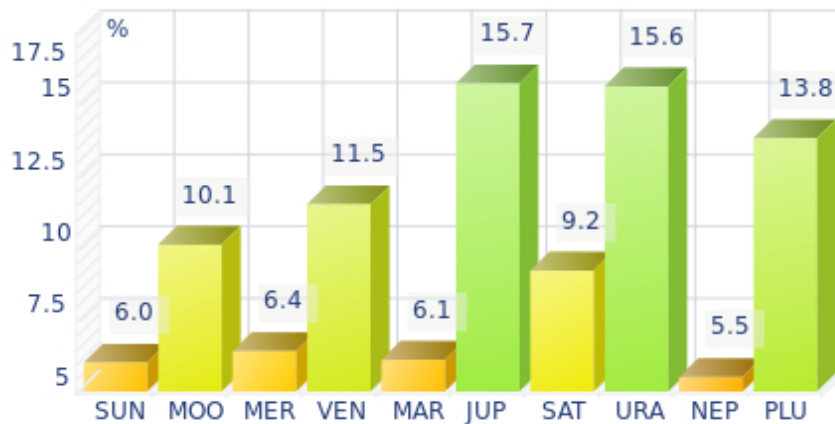
The ten planets - the Sun throughout Pluto - are a bit like ten characters in a role-play, each one has its own personality, its own way of acting, its own strengths and weaknesses. They actually represent a classification into ten distinct personalities, and astrologers have always tried to associate one or several dominant planets to a natal chart as well as dominant signs and houses.

Indeed, it is quite the same situation with signs and houses. If planets symbolize characters, signs represent hues - the mental, emotional and physical structures of an individual. The sign in which a planet is posited is like a character whose features are modified according to the place where he lives. In a chart, there are usually one, two or three highlighted signs that allow to rapidly describe its owner.

Regarding astrological houses, the principle is even simpler: the twelve houses correspond to twelve fields of life, and planets tenanted any given house increase that house's importance and highlight all relevant life departments: it may be marriage, work, friendship etc.

Lionel Messi, here is the evaluation diagramme for your planets:

## Your Dominant Planets



The three planets that are most highlighted in your chart are Jupiter, Uranus and Pluto.

Jupiter, the planet of expansion, organization, power and benevolence, is quite emphasized in your chart. Like any Jupiterian, you are warm, open, sociable, consensual, active and optimistic. You can use your self-confidence to erase differences of opinion, and you leave the task of analyzing and perfecting things to specialists. Your role, and you know it since you were young, is to gather, to demonstrate your synthesizing and conciliatory mind, and to naturally reap its fruits - power.

You appreciate legality, social order but also order in general. With you as a leader, every plan or human entity can be organized and structured. You excel at supervising. The Jupiterian type is indeed the politician par excellence, and a positive Jupiter in your chart is synonymous with good integration into society, whatever the chosen path.

Is this idyllic picture really perfect? Certainly not: each planet's typology has its own weaknesses. One of yours is pride, like the Solarian, but your will of expansion at all costs may generate a form of exaggeration in everything, endless pleasure, inappropriate self-confidence that could lead you to rough materialism and the thirst for absurd material comfort - in the worst cases, of course.

Uranus is among your dominant planets: just like Neptune and Pluto, Uranian typology is less clearly defined than the so-called classical seven planets that are visible to the naked eye, from the Sun to Saturn. However, it is possible to associate your Uranian nature with a few clear characteristics: Uranus rhymes with independence, freedom, originality, or even rebelliousness and marginality, when things go wrong...

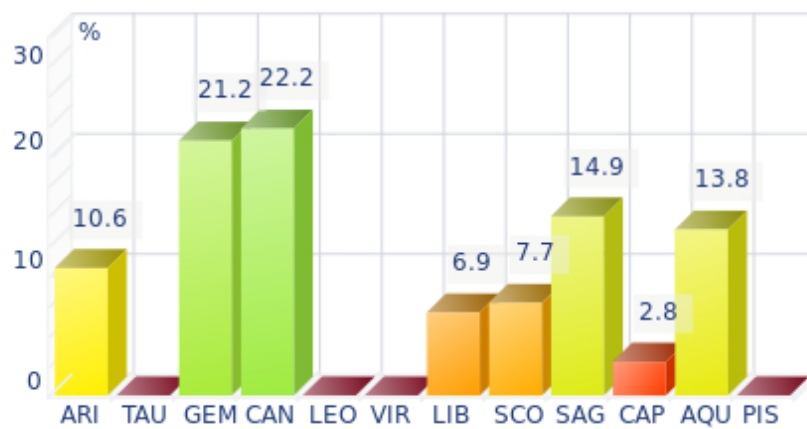
Uranus is Mercury's higher octave and as such, he borrows some of its traits of character; namely, a tendency to intellectualize situations and emotions with affective detachment, or at least jagged affectivity.

Therefore, you are certainly a passionate man who is on the lookout for any kind of action or revolutionary idea, and you are keen on new things. Uranians are never predictable, and it is especially when they are believed to be stable and well settled that... they change everything - their life, partner, and job! In fact, you are allergic to any kind of routine, although avoiding it must give way to many risks.

With Pluto as a dominant planet in your chart, you are a magnetic and mighty predator, like the Scorpio sign ruled by this planet, who needs to exert pressure on others in order to "test" them. You are always ready to evolve, to risk destruction for reconstruction - including your own - to live more intensely whilst imposing your secret authority on things and on people you encounter.

You may come across as wicked, cruel or too authoritarian, but actually you only follow your instinct, you sound people out, and you like to exert your domination simply because your vital energy is too powerful to remain inside. You are inclined to be passionate, with hidden motivations. You are sometimes misunderstood but one of your great Plutonian assets is to go successfully through each life ordeal with ever growing strength.

### Your Dominant Signs



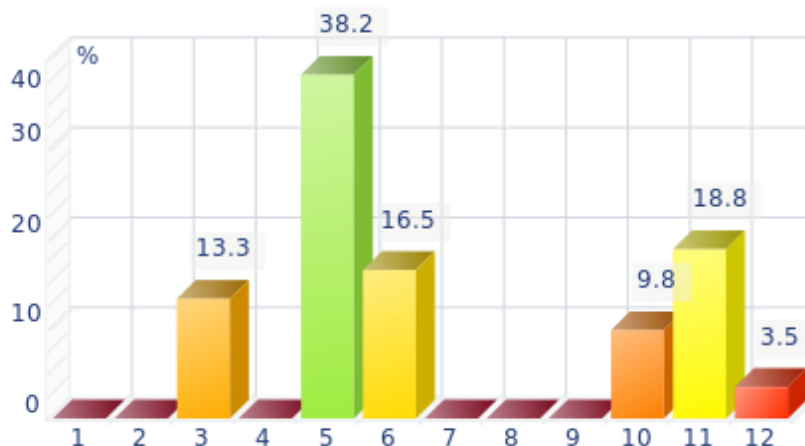
In your natal chart, the three most important signs, delineated according to the above-mentioned criteria, are, in decreasing order of strength, Cancer, Gemini and Sagittarius. They are often prominent because your Ascendant and your Sun are posited there. However, it is not always the case: it may be because they are occupied by a cluster of planets, by a planet near an angle other than the Midheaven and the Ascendant, or because two or three planets are very active and form numerous aspects from these signs. Therefore, you partly take on the three signs' characteristics, which are somehow superimposed on your natal chart, and all the more so if any of the signs in question is highlighted.

Cancer is one of your dominant signs and endows you with imagination and exceptionally shrewd sensitivity. Although suspicious at first sight - and even at second...- as soon as you get familiar with people and let them win your confidence, your golden heart eventually shows up, despite your discretion and your desire for security that make you return into your shell at the slightest alert! Actually, you are a poet and if you are sometimes blamed for your nostalgia and your laziness, it is because your intense inner life is at full throttle...

With Gemini as a dominant sign, your qualities include being lively, curious, mobile, clever, and flexible: you often make others dizzy, and you may come across as a dilettante - a bit inquisitive, shallow, and insensitive because you may be too intellectualizing. However, your natural curiosity, a nice quality, and your quick humour, allow you to demonstrate to everyone how much they may gain from your company, and that your apparent flightiness hides an appetite (particularly mental) for life, which itself conceals a terrific charm!

Sagittarius, an adventurous and conquering fire sign, is dominant in your chart: you are enthusiastic, enterprising, optimistic, very sociable, and mobile - you have itchy feet, both physically and mentally. Nobody gets bored with you because you are always planning things and suggesting excursions, at least... when you are around and not already gone on a trip! Obviously, so many movements for one man may scare people off, and some of them may even criticize your brutality or your tendency to lose your temper, but you are so warm and genuine, so expansive, isn't this a good thing? And all the more so, since your sense of humour is overwhelming...

### Your Dominant Houses



Houses 5, 11 and 6 are the most tenanted ones in your natal chart. To compute their strength, planets and angles are weighed according to various astrological criteria such as swiftness, activity, angularity, rulership etc. From the analysis of the most tenanted Houses, the Astrologer deduces the fields of activity that are most relevant to you, be it because of what you are experiencing, or what you may experience in the future, or because of your deep inner motivations.

The 5th house is one of your dominant houses: hobbies, love life, sports, and games, including speculation and all kinds of entertainment, are fields that you actually take seriously! On a more subtle level, artistic creation as well as other forms of creation - including begetting children - could be one of your assets. You gain from taking part in leisure associations and various activity clubs in which a catchword resounds more than for most people: pleasure.

The 11th house is among your dominant houses. Therefore, social life and friendships are very important, even strategic to you.

You think that group activities, whether in the humanitarian field or simple gatherings of friends, are endless sources of inspiration and of enjoyment, provided that there are no tensed aspects in this sector. Everything human is important to you, often more important than your own success, unless your 10th house is also powerful.

Your 6th house is quite emphasized and indicates interest in work and daily occupations that take up a lot of your time: in analogy with Virgo, this house inclines towards perfectionism and training; somehow, you may be fulfilled through the process of being useful and investing your energy in your work. An environment appealing to you may be involved - your colleagues, for example - or a passion for one of these daily occupations. Medical positions or pets may play a role in your life; or ancillary love affairs

too... These are a few possibilities indicated by an important 6th house.

## Your Style, Behaviour, and Peculiarities

What is commonly known as "sign" indicates the position of the Sun in the Zodiac. The Sun highlights all the characteristics of the sign he tenants. According to astrology traditional rules, these characteristics are all the more pure and exact when the Sun is strong in the sign, or when the sign is particularly highlighted within the chart. Here, we indicate the pure characteristics of the sign but you must bear in mind that they may only shed a light on a particular aspect of your personality. Indeed, the sole sign of the Sun, or of the Ascendant, can never describe an astrological chart because it depends on the degree of strength of the said sign in your chart.

Another important point must be underlined. Contrary to the Ascendant, which clearly describes your appearance, your vitality, your physical constitution, your spontaneous behaviour and the image you project, your Sun sign describes your inner self, which you may not completely be aware of, and which may emerge gradually as you mature: it is about your inner personality that you reveal only to the members of your entourage whom you trust. The Sun sign is likely to be the final form of your personality, once it has evolved in line with the energies of the other parts of your chart, the beginning of which is seen in the Ascendant, your external "bark".

The Ascendant is one of the major components of your natal chart. It is the zodiacal sign that rises in the East at the very moment of your birth. To calculate it, it is therefore necessary to know your exact time of birth.

It provides with a wealth of information on your personality. It is one of the key features that allows the analysis of several parts of you, such as your appearance, your character as it is initially perceived and your immediate behaviour. It describes the external aspect of your personality which you always display, but it also describes your physical constitution in the long-term, in other words, your health.

Please be aware that, in spite of the importance of the Ascendant, the accuracy of its description depends on how strongly highlighted it is in your natal chart. We use the entire set of astrological rules to assess the strength of the Ascendant. In most cases, the Ascendant is as revealing as your "sign", i.e., the sign where the Sun is posited at the time of birth.

## You were born under the sign of Cancer and your Ascendant is in Aquarius

Before broaching the details of the meaning of your Sun and your Ascendant, as a preamble, we offer a brief generic interpretation of their combination in your chart:

Quite an unfathomable character! This is what the members of your entourage may think. Your personality is impregnated with two very different and complex signs. On the one hand, your Cancer Sun needs nostalgia and poetry, and on the other hand, your Aquarius Ascendant is fascinated by the future and its promises. Anyhow, your desire to amaze and arouse enthusiasm is outstanding. You wear the skin of an idealist, probably owing to Aquarius, but your nonconformist facet may be caused by some sort of escapism from the present in order to search for hopes of changes to come. You are accessible to other people, but your cordiality is limited because you do not appreciate too much affective outpours, and you are reluctant to talk about your private life. This trait is strengthened by your Cancer Sun, a sign which jealously guards its tranquillity. Nevertheless, you may show your more individualistic tendencies

to your friends and relatives. In such a case, Aquarius' airy detachment gives way to a strong attachment to your material or symbolic treasures, and you then reveal a more humane and vulnerable face.

### **You were born with the Sun in Cancer**

Psychologically speaking, your nature is dreamy, oriented towards nostalgia for things past. You are very instinctive and you protect yourself against the outside world. Your inner life is rich, with fertile and even unlimited imagination, a propensity to avoid unnecessary risks and to pursue security. You show your true face only to persons you can trust, when there is a kind of well being triggered by the nostalgia for the past.

As you are born under this sign, you are emotional, sentimental, restful, imaginative, sensitive, loyal, enduring, protective, vulnerable, generous, romantic, tender, poetic, maternal, dreamy, indolent, greedy and dedicated. You may also be fearful, unrealistic, evasive, passive, touchy, anxious, dependent, stubborn, lunatic, backward-looking, lazy, burdensome, impenetrable and a homebody.

Love in the masculine mode: for you, Sir, in love, you are tender, sensitive and quite loyal. You are influenced by a mother-figure and you unconsciously look for a partner who will offer as much attention and affection as you used to receive as a child. You are a homebody and a dreamer and you blossom in the family cocoon you create, dreaming of adventures and extraordinary trips... that you most often take in your head.

Tenderness is more important than sexuality, even though it is also an agent for security and for stability. You tremendously appreciate to be again the spoiled child that you used to be, as you savour tasty little dishes or as you receive the frequent praises you need in order to feel reassured.

You are sheltered from tragedies and life complications because at the very moment when a difficult situation emerges, you nip it in the bud either by ignoring it or by withdrawing into your shell quietly, until the storm subsides.

Your home is happy and rich, quiet and harmonious, throughout your life.

### **Your Ascendant is in Aquarius**

In the sentimental sphere, you are particularly sensitive to the values of friendship, in the sense that you see yourself as a link within a chain, certainly a different and original one, but with no will to flatter your ego or to individually assert yourself. On the contrary, your aim is to immerge yourself in your friendly relations and to participate in projects and ideals of the whole human community.

As you are born under this sign, you are idealistic, altruistic, detached, independent, original, surprising, gifted, contradictory, innovative, humanistic, likeable, friendly, self-confident, impassive, quiet, intuitive, creative, charitable, elusive, disconcerting, generous, tolerant, paradoxical, and you cannot stand any kind of constraint. But you may also be marginal, resigned, distant, utopian, maladjusted, eccentric and cold.

In love, Sir, you are totally elusive. The human warmth you show in your group meetings quickly turns into a distant and sober attitude as soon as you are alone together. It is obvious that it may cause some problems if you were thought to be different. Your reluctance to talk about yourself, although not



disturbing under other circumstances, is quite inappropriate in the private sphere.

The distance you maintain, as well as your lack of emotionalism, may suddenly disappear to give room for a real relationship, since you are prone to mood swings. The necessary condition is that you have centres of interest to share with your partner. Converging passions will ensure that the magic of your relationship can develop. Ideally, a deep friendship should be the basis of your initial relationship, because friendship is a feeling that particularly suits you; in such a case, imperceptibly, conducive closeness may transform friendship into the true love you give yourself up to eventually.

You are loyal, faithful and surprising. Once you find your soul mate, you feel more comfortable and, if the harmony with your partner is rich enough, you may stay with her your whole life through. You certainly have moments that seem strange to your partner, for instance when you are impersonal or even cold. But your natural magnetism, your communication skills and your shrewdness as you play with words, work wonders for patching things up.

You avoid problems that may cause emotional or sentimental complications. Because you are often disconcerting, your partner may need some time to adjust: you disappear suddenly when you do not want to deal too closely with your individuality. And you reappear as quickly with excuses and a charming casualness, and again, you are disconcerting!

You are interested in things that are out of the ordinary. Your erotic imagination may be immense and inexhaustible. You belong to the cerebral type and you cannot separate physical and sentimental aspects from your imagination's intense activity. As a result, you explore with lucidity all the possibilities that may suit you best.

### **The ruler of your chart is in Sagittarius**

The ruler of the Ascendant, also referred to as the chart ruler, brings a few interesting nuances to the meanings provided by the Sun and the Ascendant. The sign in which the ruler of the Ascendant is posited fine-tunes the style of personality described by the Sun and the Ascendant. It may strengthen it if the sign is identical to either of them.

The ruler of the Ascendant, Lionel Messi, is Uranus. It is posited in the sign of Sagittarius and gives you a strong inclination for the open sea and for freedom. Loyal and benevolent, you put things into perspective, and you understand the true value of things, perhaps precisely because you travel - whether actually or mentally - and that stepping back from your intimate environment enables you to better perceive what is important and worthy.

### **Aspects to your Ascendant**

Several planets form an aspect with your Ascendant, Lionel Messi. Therefore, in their specific way, they modify your behaviour and your personality, which do not take on the pure characteristics of your Aquarius Ascendant only, but which are a blend of its characteristics with those of the said aspects.

★★★★★ Pluto square Ascendant, orb -2° 19'

Pluto is in dissonance with your Ascendant, Lionel Messi. You may be slightly aggressive and at the same time, mysterious or impossible to understand, to people's eyes. You are sensitive, instinctive, and you feel everything more deeply than anyone else. Be careful that this feature does not mark your

behaviour with too unsociable a note. Indeed, it would be a pity since the forces at work within you can be easily controlled and turned into assets if you care to stand back. Detecting other people's weaknesses is fine. But don't misuse this ability!

★☆☆☆☆ Moon sesqui-quadrate Ascendant, orb  $-0^{\circ} 56'$

Sometimes, Lionel Messi, your sensitivity clashes with the image you want to project. As a result, you may feel vulnerable and suffer if you let yourself be disheartened. Try to put things into perspective and to confront your emotions without fearing your external image. This is how you can compensate for this minor dissonance between the Moon and your Ascendant.

★☆☆☆☆ Sun inconjunction Ascendant, orb  $-2^{\circ} 03'$

There may be a contradiction between your will and your external appearance, Lionel Messi, which slows down your natural spontaneity and in some circumstances, gives rise to doubts regarding your behaviour towards other people and the need to be true to your own beliefs. There is certainly nothing serious with this minor dissonance between the Sun and your Ascendant, only choices that are to be made, so as to remain in harmony with yourself.

## Your Sensitivity

Lionel Messi, you tend to hold emotions at bay, as if they were dangerous. You observe with curiosity what is occurring and you strive to objectively, logically and impersonally analyze facts in order to form correct judgments. Contacts and communication are very important to you, Lionel Messi, you make use of, even over-use, words, with deep humour because it is an additional way for you to be detached from your feelings. You may come across as superficial because you keep on talking without committing yourself. You need to be constantly on the move, to discover and to communicate in order to avoid boredom. When you are alone, you can spend lots of time with books to nourish your mind that is so avid for knowledge. However, be careful not to miss feelings because you favour intellectual sensations...

Entertainments, hobbies and parties, love affairs, holidays, here are the areas where you express best your emotions, Lionel Messi. You like children's company, your popularity is often good and you use it in order to increase the number of your encounters in order to see your seductive power.

You are often endowed with artistic creativity. Art is a good outlet for all these gushing and fluctuating emotions that must be released at the slightest external stimulation.

### ★★★★★ Moon conjunction Venus, orb 2° 17'

The harmonious Moon-Venus aspect is an element of intimate balance that favours sensual and affective fulfilment. The search of well being includes all kinds of emotions and feelings. You love, you enjoy life in simple ways and you arouse your entourage's affection. The persons belonging to your inner circle are also objects of desire and pleasure. Tenderness and love are probably one and only thing: you are moved by the gestures of affection provided to you and by the daily acts which strengthen two persons' mutual attachment. Whereas other people dread routine, in your case on the contrary, it increases your amorous feelings. You loathe all kinds of violence, particularly in your intimate life. The danger of this planetary configuration may be your constant changes of mood: whims are often on the agenda... and your will is quite weak. One last point: this aspect is frequently found in the charts of people with an aesthetic or artistic sensitivity.

### ★★★★★ Moon opposite Saturn, orb -2° 18'

When this aspect is not well integrated, there is no feeling of integration and security. You feel that you are not understood or even, that you are rejected. It is difficult for you to find inner peace and tranquillity. You lack the quietness and the primordial confidence that would allow you to lay back and to be carried away and pampered by life. This configuration indicates questionings and doubts regarding the unconditional affection that each individual longs for. You do not trust the world. You tend to dismiss social models, as well as your close friends' attachment and tenderness, probably because you need to test them and to get the feeling of being loved that you naturally lack. It would be a mistake not to see that you desperately need affection. You are particularly vulnerable to relationship flaws and you strive to find the gestures of love that would allow you to let go and to be nurtured by life. In such a context, the sincerity you display, as you give or refuse your trust, is highly commendable.

### ★★★☆☆ Moon opposite Uranus, orb -5° 2'

The Moon and Uranus intrinsically share little in common: they get along as well as fire and water! It is difficult for you to reconcile your desire for well being and intimacy with your destiny's dazzling passions and thunderbolts. You may feel that your intimate and family realm hampers your freedom. There is a potential for crises, explosions or splits. The desire for independence does not get on well with security concerns. There may be strong temptations endangering your very life foundations and you may embark

upon a liberating and personal adventure. However, you fear rash decisions. Your need for security may temper your impulses and put a brake on your individualistic aspirations. To harmonize these tendencies within your intimate life, you must leave yourself enough room for personal expression or for an activity of your own. Otherwise, as days go by, built-up tensions may jeopardize the quiet course of your life.

★★★★★ Moon sextile Jupiter, orb -5° 59'

Why should one complicate one's life if it is possible to enjoy the simple joys of the present? This harmonic Moon-Jupiter aspect indicates a cheerful nature, which earns your entourage's liking and protects the balance of your intimate life. Your sociability is supported by your desire to smoothly adhere to a group, a social or family cell. You are fond of moments where you unwind and relax. You value your daily comfort and, to preserve it, you accept to play by the rules of privacy. When this aspect dictates your attitudes, you behave like a person easy to get along with... even though your personal demands, relegated to the backseat, come up again at top speed and force you to behave more in line with your inner needs.

## Your Affectivity

In your chart, the Sun is in Cancer and Venus, in Gemini. Such different signs as Cancer and Gemini can only forge an affectivity that is rich in its contrasts and complexity. It comprises two antinomial modes: the desire for discovery of Venus in Gemini opposes the ideal of security of the Sun in Cancer. The former is a learning function and lives on the multiplicity of experiences. The latter is a protection function and tends to isolate the couple in order to enable thorough exchanges and total fusion. It is crucial that you find a good balance between these equally important tendencies: to experience renewed emotions, without endangering the absolute and unique nature of the relationship, amounts to allow your affectivity some freedom within a context of mutual respect and confidence. Freedom does not mean unfaithfulness! The wholeness and indivisibility of the cell-couple is of utmost importance. You are possessive and exclusive. However, Venus in Gemini needs her fair share of varied emotions. Routine destroys desire in the medium term. You may tend to establish a playful mode in your couple; whims and fantasy nurture steady bonds. If this condition is met, you become able to build a relationship full of tenderness, never barren, never smothered by inextricable and disastrous habits.

What is it, that really appeals to you, Lionel Messi, to love or to please? You have so much charm and so much volubility that you easily manage to be what is known as a lady-killer. Feelings and intellect are so tightly mingled that you may not know any more whether you are really in love or whether you are acting. You have a taste for flirt and variety, and you appreciate very much complicated situations where no one knows where the truth lies any more. You shift from one game to another. To you, everything can be an agent for seduction, be it your attitudes, your words or the way you dress. You do not separate your actions from your desire to please. People who do not understand this are in trouble because, if they take your sweet and well-phrased speeches too literally, they are likely to undergo cruel disappointments: for you, it is only a matter of living in the moment and you never commit yourself because, above all, you loathe confinement, even just its thought.

Lionel Messi, your Venus has a natural affinity with this house. She feels very comfortable and she gives her best in terms of intensity of feelings, artistic creativity, inclination for leisure, entertainment, fine arts and music gifts and even, the capacity to easily communicate with children. With Venus in this house, more than in any other position, the affectivity is increased and endows you with an active and

enterprising attitude, in this area of life. Creativity is associated with the 5th house and Venus here allows you to blend pleasure and motivation, not only in the field of artistic creation and entertainment, but also in love, where you are prompted to fearlessly create or to actively develop romantic relationships with the elected person. Besides, you are particularly at your best here, more ready to extend extreme kindness, warmth or seduction than in any other of your daily activities. However, the danger with this position is to fall prey of your own great ability to please, to seduce or to enjoy yourself, be it through romantic dissipation or through sheer pleasure to shine.

★★★★★ Venus opposite Saturn, orb -0° 01'

This Venus-Saturn dissonance indicates a demanding, complex and often challenged affectivity. You are wondering about the meanings of love, pleasure and emotions. Your passions take an absolute character right away. No compromise, no sham must stain your sentimental life. In such a context, doubts abound. This aspect prompts you to review the roots of your affectivity, so as to find the assurance you lack and to soothe your dormant sentimental anxiety. Love is an eternal and endless quest. Because you are doubtful of the affection people have for you, you may never feel that you are really loved. Your affective behaviour reveals your uncertainties: tests and challenges follow one another until, eventually, you are certain to experience a love that meets your demands. It is obvious that on the sentimental area, you are not looking for the easy way out.

★★★★★ Venus opposite Uranus, orb -7° 37'

Your sentimental life is adventurous: you prefer Bohemia to the comfort of a quiet but shaky love affair. You are a hard-liner and you think that love should be genuine or it should not be at all! You have difficulties in resisting your heart impulses and untimely passions that may challenge your affectivity. You need air, freedom and a relative independence. You also need to fully experience your love impulses, regardless of the price to be paid. The heart has its own reasons that no rules can hamper... The obvious danger may be to cause dramatic hurly-burly. Your inflexibility on the affective plane does not favour a quiet life where « one makes do with very little ». You are the all or nothing type. But does the absolute really belong to our world?

★★★★★ Mercury semi-sextile Venus, orb -0° 28'

This aspect sensitizes you to games of seduction. You like to multiply romantic undertakings, you invent new reasons to seduce or to be seduced. Although your romantic life is not a model of stability, it is full of discoveries, varied emotions, both sensual and cerebral. You know how to earn your entourage's liking through your acute sensitivity. You play around with feelings, with relationships and with love... Mercury and Venus commonly share the capacity to sensitize to human topics. Your receptivity towards others is high. Your broad-mindedness goes hand in hand with your heart's generosity. You pay particular attention to the way people look at you and the effect you make when you meet or exchange with someone. Actually, you expect a lot from others: acknowledgement of your qualities, as well as esteem and consideration. You may also be touchy beyond what you may give to think. In many instances, relationship games may turn out to be more serious than expected.

## The Way You Take Action and Your Sexuality

It is difficult to find a more sensitive person than you, Lionel Messi. You are able to contain your aggressiveness and it may be hard for you to exteriorize your feelings. You are usually passive and you draw your strength from inertia and resistance more than from the will to take action. Your mood is

changing, you show little of yourself and you may surprise with your inopportune reactions that come late, when people have forgotten what it was all about. The only area where you express yourself with zeal and where your actions are successful is the area of home or, more symbolically, in the fields where you can achieve security. In other words, you need to feel comfortable before you can move, in concrete matters as well as in sexuality.

It is in the area of your work environment that you are most active and pugnacious, Lionel Messi. Or in your daily life, if you do not work.

You are a hard-worker, completely dedicated to the service of others: being helpful and efficient is your battle horse. Indeed, it is so obvious! Ask the opinion of your colleagues or your entourage... Your efficiency is not to be proved. You get things moving, you progress, you are very keen to improve yourself, and your boss can only rejoice that his staff contributes so actively.

The areas of health and pets are traditionally favoured by this planetary configuration. However, do check your Mars' aspects if you intend to be a tamer!

In any case, the daily work sphere is the area where you can deliver to the best of your abilities, in terms of action. The only reservation may be not to overdo.

#### ★★★★★ Mars square Jupiter, orb -2° 32'

You mobilize your energy as soon as there is an opportunity to turn your chances into concrete reality. You assert yourself in a spectacular and demonstrative manner as soon as an assembly gathers and there is a chance for success. However, too much haste and zeal may harm your projects and spoil your expected outcome. The danger with this aspect is your overzealousness as you strive to achieve your objectives and your ambitions, forcing your way through events, whereas the situation requires diplomacy and patience. Too much fieriness may make you miss your target. With this planetary configuration, it is important that you keep in mind that some circumstances need to be handled with precision and clear-sightedness. Not all opportunities are necessarily good. It would be a pity to lose your efficiency through excesses of opportunism or of enthusiasm.

#### ★★★★★ Mars bi-quintile Saturn, orb 0° 13'

Persistent action always bears fruit eventually. All that is needed is patience... A quality you have, undoubtedly. As confrontations become unavoidable, you show strong persistence and indisputable perseverance. Potential obstacles are more stimulating to you than they are discouraging. You are naturally fit for effort and for confronting realities and facts. You quickly overcome difficulties and you respond to crises in an efficient and considerate manner. You are enduring. You handle events with rigour and precision. These are valuable qualities nowadays, for they often come with the capacity to undertake adventurous experiences and to take limited risks!

#### ★★★★★ Mars inconjunction Uranus, orb 1° 53'

This Uranus-Mars dissonance indicates frequent commotions. Your actions may be foolhardy and thoughtless. You may not control your temper and you let impulsiveness take over logics. This brings about drastic, whimsical or untimely decisions. There is no monotony in your life: thunders and tyrannical behaviour are on the agenda! Your fighting spirit certainly allows you to cope with life hardships. Nevertheless, beware of damages. As one wants to act as a hero, one can make mistakes. Because forces are overestimated or because inflexibility forbids compromise solutions. Therefore, it is

important to balance your decisions and to avoid solutions that are as final as inappropriate.

## Your Intellect and Your Communication Style

Your intelligence is sensitive and delicate, with good comprehension abilities, Lionel Messi, which endows you with a strong intuition and receptivity. To you, impressions and feelings prevail over facts and your excellent selective memory is not cluttered with useless elements. Although you are not aware, your fertile imagination may lead you to change your daily reality so that it matches your dreams better. If you are creative, you may make use of your imagination in literary pursuits where you can freely invent beautiful stories taking place in the past. Your passion for History is such that you may immerse yourself into it with too much nostalgia and therefore, you may miss opportunities the present offers to design projects and to think of the future.

It is at work that you can release your mental power full steam ahead, Lionel Messi. What's the point of racking one's brains if it's not to show one's professional value, to climb the social ladder, to earn one's colleagues' esteem, and to improve oneself every day. You adjust very well to your work environment or at least, this is one of your main concerns.

Your intelligence is rather practical or concrete and you are often interested in health and sometimes in pets, and you are very keen to turn each day into a source of intellectual stimulation.

### ★★★★★ Mercury conjunction Mars, orb 6° 13'

The harmonic Mercury-Mars aspect is the signature of a quick wit and an energetic character. You take decisions rapidly and you implement them straight away. You never accept stiff situations. You need to design, to take action, to fight to express your acute sense of relation: the world, the people, everything is of concern to you... You need to be involved in relationships and in dialogues. Your sharp retorts earn you a reputation of straightforwardness. On the relations' area, your quick wit and your mobility are greatly appreciated. You find the allies and partners you need at the right time. An art of resourcefulness that is precious...

### ★★★☆☆ Mercury inconjunction Saturn, orb 0° 27'

This Mercury-Saturn dissonance does not allow for simple and spontaneous relations. Your vision of the world is complex. You are sensitive to the fragileness of human relations and you are doubtful of transparent situations. You need to look for hypothetical calculations and you suspect that unclear reasons are underlying beneath dialogues and encounters. Your sociability is limited. You are a loner because you dread relationships and you trust very few people among your close friends. You ask yourself more questions than you can find answers! Therefore, you are on the look out, troubled by the unknown. Everything is subjected to your questionings. It seems difficult to find certainties and to be satisfied with commonplaces that cannot soothe your doubting mind. The forte of this aspect is that it brings about undisputable capacities for discernment. Although your lucidity may hinder your relations, it also grants a lasting protection against gullibility. By nature, you belong to the category of the sceptics!

### ★★★★★ Mercury opposite Neptune, orb -9° 32'

With this Mercury-Neptune dissonance, relations may be distorted by the mirages of sensitivity. You have to make an effort to keep your objectivity. If this aspect is not well integrated, it may harm your good evaluation of human stakes. Your intimate beliefs may limit the dialogue, as if a very specific

sensitivity prevented true communication. It may be difficult to find the right wording to express fragile and ineffable experiences. Imagination in power is not easy to share and the poetry of your speeches may be beyond your audience's understanding!

## **Your Goals, Motivations, Career, and Destiny**

### **Your Sun is posited in the 5th House**

Lionel Messi, your main motivations and your will lead you towards activities related to creation or to the outwards expression of yourself. It may take the form of the mobilization of your energy aiming at artistic, literary or technical creations and works, innovative projects design, or symbolically, projecting yourself into your descendants: creation via procreation.....

You are usually very sociable, warm, honest and straightforward, but sometimes inflexible and you are interested in leisure under all its forms. Love pleasures, firstly, but also outings, parties, games (gambling and other amusements), and all kinds of activities containing a part of risk that can increase your adrenalin level! You loathe anything that is too solemn and too serious in general and you prefer the authenticity of the present to intellectual meditations that seem too static to you.

Your will to please is very strong and you can shine in the love area. Since the recreational world is linked to that of children, you easily deal with them. When you become a father, one of your major goals is to dedicate yourself to their success. You are able to dedicate an amazing amount of time to their education and you succeed in that field better than anyone. Besides, you have the knack with children and everyone envy you!

One never gets bored in your company and you have loads of hobbies and occupations that are out of the ordinary. You are creative and playful, to a point that may border on fanaticism. Try to avoid role-plays or casinos that take up so much of your time... Be also wary not to surround yourself with sad or austere people who may not find you serious enough!

You spend too much energy in entertainment activities and you may lose sight of your real interests. If you listen to your instinct rather than to your reason, you take the risk of missing a few dates with your own success: you must sometimes put fun aside and force yourself into solemnity, in order to become more efficient and to achieve your goals more quickly. It is also likely that you face problems within the circle of your friends.

### **The ruler of your chart is in the 11th House**

The ruler of the Ascendant, also referred to as the chart ruler as explained in a previous chapter, is also posited in one of the twelve Houses of the chart. Just like the Sun in his House, the ruler of the Ascendant provides certain abilities, or it makes you appreciate more keenly certain areas of life.

The ruler of your chart is in the 11th House, Lionel Messi. This position often reinforces your sociability and your need for friendship, or sometimes when this is not the case, for all sorts of cooperation, whether social or political. You need to make friends, to share, and it often happens that your life with your friends or in society is much more fulfilling than your family life. You are granted - or you seek - reliable protection and support.



## Aspects influencing your ambitions

Regarding your destiny or your career, the following aspects of your natal chart allow to fine-tune what has just been said above:

### ★★★★★ Jupiter opposite Midheaven, orb -1° 17'

As Jupiter, the most beneficial planet of the Zodiac, makes an opposition to your Midheaven, he also makes a conjunction with the opposite angle, the Imum Coeli which represents your family, your home, and your roots. Therefore, it is not correct to talk about a dissonance, strictly speaking. It does not indicate that your social ascent is slowed down, at least, not directly. It is more that you have a certain amount of good luck in the opposite area, meaning your domestic and family spheres. You feel more comfortable in your "home, sweet home" than in society, and you are more sociable or more blossoming when you feel in security with your close friends, in your territory. Indirectly, you may feel that there is a discrepancy between the success of your career and the fulfilment of your family life.

### ★★★★☆ Sun opposite Neptune, orb -3° 48'

If this Sun-Neptune dissonance is not well integrated, it may bring about confusions and errors of judgment. It is the signature for Don Quixote in search of chimera, pursuing impossible dreams. Your intuitions may lead to an incorrect estimation of facts. Bohemian life is certainly pleasant. But it is often necessary to remain realistic, lest to be exposed to delusions. Carelessness and letting-go is not suitable. In order to properly integrate this aspect, you must control the possible drift of a wandering and fabulous sensitivity. This aspect favours poetic and romantic inspiration. But you must not let it rule your concrete actions. It is important to allow your intuitive capacities to be fully expressed while keeping a lucid mind, simultaneously.

### ★★★★☆ Uranus sextile Midheaven, orb -1° 56'

Thanks to this soft aspect of Uranus to your Midheaven, Lionel Messi, you are endowed with the gift to let yourself be carried away by the changes cropping up on your way. Instead of being disheartening, modifications affecting your professional or social environment... stimulate you! Then, you may show opportunism, in the good sense of the word, and throughout your life, you may experience strokes of good luck, the consequences of which can be increased, thanks to your talent and your lack of fear whenever you face newness.

### ★★★☆☆ Mars square Midheaven, orb 3° 49'

Because Mars is in dissonance with your Midheaven, in some circumstances, you may feel misunderstood, Lionel Messi. In society, you may even feel hostility towards you as you try to climb up the steps of your professional life, or when you strive to reach a higher social status. Your efforts may be resented. You must be twice as careful as you usually are and tone down your behaviour in order not to be rude to other people, even though from your viewpoint, and it is actually most often the case, it only has to do with misunderstandings or some eagerness on your part.

### ★★★★☆ Sun trine Pluto, orb 4° 22'

This harmonious Sun-Pluto aspect indicates an exemplary clear-sighted mind. Without destabilizing your appearances or your personality mask, Pluto makes you aware of your subjective and questionable character, as well as of your manner. You never take yourself completely seriously. You have a good grasp of human nature's complex games, without gullibility, without excessive simplification. Because you can perceive hidden elements underlying any situation better than anyone else, you are acknowledged as perspicacious. This aspect allows you to distance yourself from difficult circumstances

and to remain impassive when you must overcome pitfalls.

★★★★★ Sun trine Midheaven, orb -6° 35'

In the professional and social status areas, Lionel Messi, you know what you want, and you know how to cleverly obtain it. Because the Sun and your Midheaven are in agreement in your natal chart, you have no qualms and no hesitations when it comes to defining the strategy for reaching your goal.

★★★★★ Sun opposite Uranus, orb -8° 31'

This Sun-Uranus dissonance indicates a dazzling will to be the centre of attention and to proclaim your specificity, by all means. This aspect belongs to the rebel and the revolutionary restive to all forms of authority and of model. To balance this interpretation, the strong need for autonomy bordering on frenzied individualism must be highlighted. You allow nothing or no one to hinder your chosen line of conduct. Obviously, your attitudes are inflexible. You prefer to continue to the bitter end, even when you are wrong, rather than to be more open to people's ideas. Tyrannical attitudes often turn against the perpetrator... However, this configuration is a powerful agent for creativity, provided your hothead and extremist nature is kept under control.

★★★★★ Moon trine Midheaven, orb 7° 16'

Your sensitivity and your emotions are in line with your goal and your ambitions, Lionel Messi. You do not need to curb your temper lest other people have a wrong perception of you. Indeed, by being your true self, very simply, your social ascent will unfold naturally.

## Your Assets and Your Part of Joviality

The planet of Greater Fortune in this sign favours self-confidence, Lionel Messi, as well as the capacity to be enthused and to show your warmth. Your most valuable asset is your ability to easily express your fieriness and your ardour for the implementation of your projects. However, the danger is that your self-assurance may become an agent for rebellion or for indiscipline, in which case, it would play out against your interests.

Lionel Messi, the position of the planet of Greater Fortune in this astrological house brings about easy interpersonal relations, your siblings' love, great communication abilities within your neighbourhood, and pleasant short trips throughout your life.

The planet Jupiter symbolizes expansion, broadness and generosity. Jupiter is associated with the functions of synthesis, enthusiasm and optimism. In your natal chart, his house position is more important than his sign position because, like Saturn, Uranus, Neptune and Pluto, he is a slow planet. Many people born in the same period have Jupiter in the same sign. This is the reason why the sign occupied here is less meaningful than when it is occupied by the so-called fast planets, i.e. the Sun, the Moon, Mercury, Venus and Mars. Therefore, some caution is to be exercised as you read what follows.

Jupiter in Aries amplifies your tendency to charge ahead and your self-assertiveness. You have leadership qualities, you are optimistic and you can mix the boldness with the will to succeed that are specific to Aries. Management ability, leadership and independence: your enthusiasm is a real asset for your life and for your charm!

## Your Serious Side

You thoroughly analyse and criticise the values of freedom, your desires for evasion, and your philosophical concepts. You have your feet firmly on the ground, and you prefer to progress on familiar grounds, step by step, but in depth.

As soon as you become a member of a community, and when you are surrounded with people or with friends, you instinctively protect yourself, and you even hide, Lionel Messi. There is nothing you can do against this. In public, you do not show your real face, but in friendship, you are loyal and reliable.

You prefer quality to quantity, and your friends have every reason to be happy that they won your confidence because they know that they can rely on you under all circumstances. Your friends are usually much older and more seasoned than you.

The planet Saturn symbolizes contraction, effort, time, limitation and concentration. Saturn eliminates anything that is not authentic, sooner or later. It is impossible to cheat him as he gives an irresistible desire to form a coherent whole with oneself, in responsible and wise ways. He is the great purifier. He represents our limitations but also our truth. In your natal chart, the house position where Saturn is posited is more important than his sign position because, like Jupiter, Uranus, Neptune and Pluto, he is a slow planet. Many people born in the same period have Saturn in the same sign. This is the reason why the sign occupied here is less meaningful than when it is occupied by the so-called fast planets, i.e. the Sun, the Moon, Mercury, Venus and Mars. Therefore, some caution is to be exercised as you read what follows.

Saturn in Sagittarius limits your taste for exoticism and for rebellion. On the other hand, he strengthens your sense of responsibilities and your authority. You focus on what is concrete and real and you avoid venturing into unknown territories.

## A Few Special Points

### Your Uniqueness and Your Utopias

Powerful protections, friendships, and supports are granted to you at a jerky rhythm throughout your life. There may also be break-ups that are as brutal as they are easy to forget because you manage to ensure that your contacts are brilliantly revived.

The friends you meet have strong personalities, or they may be quite special persons; indeed, you think of friendship as a rich and varied soil in which everyone must bring one's own contribution with one's touch of originality and difference. Otherwise, what's the use?

The danger is that you may embark upon projects that you cannot see through in the long run because they are too utopian. You may also count on partners who are too eccentric to be reliable. Or, on some occasions, you may show too much independence of mind or a boldness that is too strong to really last.

With this typical configuration, your popularity may fluctuate and disappear as quickly as it comes. It is up to you to set the limits of originality that you must not overstep, lest you should undergo unfortunate consequences.

## Your Inspiration and Your Illusions

You may be particularly sensitive to other people's sufferings and you want to dedicate yourself to a humanitarian cause. Your psychical life may be so intense that it brings about moments of loneliness that you use to transform yourself and to live through your ideals in sheer sincerity.

These moments of solitude may upset you. Undefined worries or hidden enemies may cause troubles, in a few rare occurrences.

In any case, this configuration is not negative as such, because there is an analogy between the planet Neptune, the 12th house, and Pisces. Your compassion and your emotional content may work wonders in your surroundings, and at the same time, they make you evolve spiritually.

## Your Passion and Your Authority

Your career, and more generally, your entire destiny, is challenged in many instances. You are individualistic, and you do not hesitate to forcefully provoke events, but often, external facts, totally beyond your will, are the causes of major disruptions in your life.

Your strong ambition prompts you to use your instinct of domination over people and over things... Towards that aim, you cannot help it, you have to trigger crises that invariably bring about transformations around you and within you. And this is exactly what you unconsciously wish for.

In your professional world, you are respected and even feared. It is up to you to be careful not to overstep boundaries, if you do not want to bear the consequences of this transforming agent that is inherent to your destiny.

Symbolically, the Tradition indicates that your mother is very probably domineering and authoritarian – at least, in your opinion - particularly during your childhood.

## Your Isolated Planets

In general, the ten planets of the chart are connected to other planets by major or minor astrological aspects. It is owing to those ties that the planets' energies can manifest in the chart owner's personality and play out within safeguards according to a specific tonality.

It seldom happens that in a natal chart, a planet is totally disconnected from the nine other planets.

Astrologers have observed that when such a case occurs, the person feels the energy of the unaspected planet in quite a singular way, very jerky and powerful at the same time. Thus, for instance, the famed astrologer Jean-Baptiste Morin de Villefranche wrote that "an unaspected planet heralds that something strange or extraordinary will take place regarding the meanings of the house in which the said planet is posited" (source : l'astrologie selon Morin).

Rules for detecting an unaspected planet: among all the testimonies that we have reviewed to this day, based on our experience, we tend to agree with American astrologer Janis Huntley who accepts seven

aspects, which involve the zodiacal twelve sections of 30 degrees. The aspects to be considered are the conjunction (0 degree, cooperation or tension), the semi-sextile (30 degrees), the sextile and the trine (60 and 120 degrees respectively, aspects of cooperation), the square and the opposition (90 and 180 degrees respectively, tensed aspects), and the quincunx (150 degrees, slightly tensed). In this detection, the chart's angles are not taken into account.

In any case, it is important to remember that an isolated planet clearly expresses its influence when it is a personal planet. Thus, when the Sun, the Moon, Mercury, Venus, or Mars is isolated, it is certain that the effects described by Jean-Baptiste Morin de Villefranche will become manifest. As for Jupiter, Saturn, Uranus, Neptune, and Pluto, one must be cautious because the volume of cases documented is not yet large enough.

Your chart has no isolated planet, and this particular case does not apply to you.

## Annex 1: Your Minor Dominants

The five following dominants are less significant than those described at the beginning of your report. They may not be strongly felt. In some cases, they add several minor details to the analysis of your character, but they are rather for curiosity purposes. It is not necessary to take them into account when you first read your portrait.

### Your Planetary Repartitions: Northern, Southern, Eastern and Western Hemispheres

The axis linking the 1st house's cuspid (the Ascendant) to the 7th house's cuspid - the Descendant - divides the zodiac into two bowls, a superior bowl, in the South, and an inferior bowl in the North. Quoting an expression by the famous American astrologer Rudhyar, the Southern part and the Northern part correspond to two functions: "being" and "doing". Other concepts are also associated with this North and South distribution, such as introversion - Northern hemisphere - and extraversion - Southern hemisphere - being or appearances, inner life or external life, reflection or action, dreaming one's life or living one's dreams, the abstract or the concrete, backstage or limelight.

This is not about determination but about personal inclination: thus, some people will be thrown into public life despite a prominent Northern hemisphere. If this happens, however, it will not be due to their will, their taste or their deep nature. Conversely, a prominent Southern hemisphere will not bring about a famous destiny to its owner, even if he tends to turn the spotlight on himself, or if he looks for a more active life. It is a matter of deep nature and natural inclination. Of course, none of the typologies is "superior" to another.

In your birth chart, Lionel Messi, the ten main planets are distributed as follows:

### Your Northern and Southern Hemispheres



Lionel Messi, the predominance of planets in the Northern hemisphere prompts you to reflect and imagine rather than to exteriorize your actions and to be at the forefront of the stage. So, should you wish to remedy this situation, it is up to you to force your nature to take action in broad daylight, to communicate, and to assert yourself... then, you can move forward in this concrete life and enjoy your newly won situation.

The birth chart is divided into two other parts, Eastern and Western, by the axis linking the Midheaven

to the Imum Coeli.

The Eastern part, on the Ascendant side, shows the person's ego, will, magnetism, and vitality, whereas the Western part, on the Descendant side, symbolizes other people, communication, relationships and their influence, as well as flexibility and adaptability.

Lionel Messi, here is the planetary repartition in your Eastern and your Western hemispheres:

### Your Eastern and Western Hemisphere:

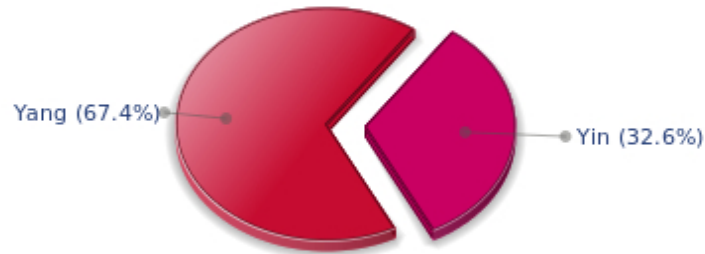


Lionel Messi, the East and West sides are well balanced in your chart. This means that you are not too determined or authoritarian, and that you are neither impressionable nor fragile. You are capable of taking decisions, in full awareness, without anyone's help when circumstances so require. However, you have no problem taking your entourage's viewpoints into consideration, with tact and intelligence.

### Your Yin and Yang Polarity

The twelve signs are divided into two polarities, called active or passive, or sometimes masculine and feminine, positive and negative, Yang and Yin. This classification corresponds to two quite distinct tonalities, the first one bringing extraversion, action, self-confidence and dynamism, the second one, introversion, reactivity, reflection and caution. None is superior to the other, each group has its own assets and shortcomings. Odd signs - Aries, Gemini, Leo, Libra, Sagittarius and Aquarius - belong to the first group, whereas even signs - Taurus, Cancer, Virgo, Scorpio, Capricorn and Pisces - belong to the second group.

## Your Yin and Yang Polarity



According to the disposition and qualities of your planets and angles, you are rather influenced by Yang energy, the active polarity, Lionel Messi: more concerned about actions than reflection, you sometimes rush without standing back and without the deepness that is needed. However, your spontaneity prompts you to take fresh starts, even after repeated failures caused by your rashness.

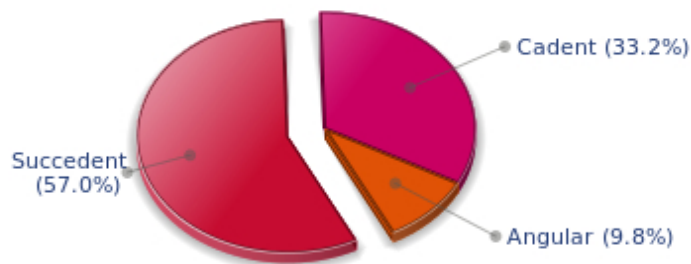
### Your Houses' Accentuations

Houses are split up into three groups: angular, succedent and cadent.

The first ones are the most important ones, the most "noticeable" and energetic houses. They are the 1st, 4th, 7th and 10th houses. Their cuspides correspond to four famous angles: Ascendant for the 1st house, Imum Coeli for the 4th house, Descendant, opposite the Ascendant, for the 7th house and Midheaven for the 10th house, opposite the Imum Coeli.

Planets are evaluated according to a whole set of criteria that includes comprehensive Western astrology rules. At their turn, planets emphasize specific types of houses, signs, repartitions etc., as previously explained.

## Your Houses' Accentuations



The emphasis is on succedent houses in your chart, namely, the 2nd, 5th, 8th and 11th houses, Lionel



Messi: this configuration usually endows a personality with affective and sensitive qualities. Obviously, to the detriment of self-confidence or self-assertion, but your heart qualities may be very important. These houses also favour realization. Time and patience are part of their characteristics. However, they are only indications and you must include them in the rest of your chart in order to see whether they are validated or not!

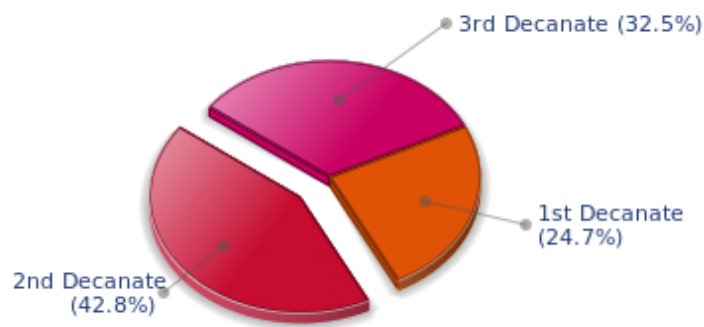
### Your Esoteric Decanates

Each sign contains 30 degrees and can be divided into three equal parts: the decanates. The Tradition indicates that specific meanings can be associated to each of the three decanates. Their sphere of activity is usually limited to the Sun sign, however, it is even more interesting to observe the distribution of all the planets in the chart to get an idea of the respective importance of the three decanates, which can complement the description of the personality.

These meanings must be considered with the greatest caution. Indeed, they are minor characteristics that can only underline other outstanding traits of character.

Traditionally, the first decanate highlights the characteristics of the sign where a planet is located. The two other decanates correspond to sub-dominant planets, depending on the nature of each sign. This system leads to a multiplication of meanings and it is impossible to have a clear understanding: here, we prefer to give only the meaning of one decanate in comparison with the other two, within the birth chart as a whole. Again, the greatest caution is needed with regard to this minor indication as it is not always reliable: it is not essential that you read these texts in the beginning. You can get back to them later on, once you have read more important interpretations

### Your Esoteric Decanates



The second decanate, which means the part between 10° and 20° of any zodiacal sign, prevails in your natal chart, Lionel Messi: these 10 zodiacal degrees emphasize logical thought and mental values. Therefore, you may be drawn to some kind of scientific activities, research, writing or any sort of expression where you have to... think a lot.

## Annex 2: Karmic Study

The karmic theme is a good complement to the psychological portrait, or natal chart. This analysis is based on the positions of the Lunar Nodes, the Black Moon and the Part of Fortune: they are also called fictitious points and describe the spiritual purpose of your destiny. Because there is in all of us an experience and a quest, our life is an evolutionary journey... provided that we head towards the right direction, of course! Indian astrologers highly prize the Nodes axis (North Node and South Node). It is the Ariadne's thread that we are invited to follow. The Black Moon indicates the sector where we are most likely to transform or to transcend, whereas the Part of Fortune points out the area where we can easily express our specificity.

### The Lunar Nodes: a spiritual path

Lunar Nodes have their roots in the Indian tradition and they are based on a simple concept: each of us have a mission of their own, here on earth, a destiny, a course. According to the Indian philosophy, life is a school: the nodal axis describes our past experiences (South Node, our karma, our spiritual inheritance or our previous lives), and our aims on earth (North Node, our Dharma, the purpose of our current incarnation). This is the reason why the study of the lunar nodes is called "Karmic astrology". Here, we shall not step into hypothetical past lives. Wherever our current trends may come from, all that really matters is that we become aware of the purpose of our life, its finality and our dharma. We are likely to understand our life purpose around the age of 37, when the Lunar Nodes return to their natal position.

You have obvious sociability qualities. You know better than others how to adjust to a new context and to copy your entourage's behaviour exactly. You do not dissociate yourself from groups or cells (social, family), on the contrary, you frequently adopt flexible attitudes that meet other people's expectations. This may translate into a lack of fighting spirit. You may not dare to go against prevailing fashions and currents. Because you dread unknown situations, you may miss the opportunity to innovate. It is important that you learn to go it alone and to get rid of scruples that hamper your doings: life encourages you to leave aside other people's opinions and, as time goes by, to find your autonomy of thought and action. While keeping your sociable nature, it is important that you develop a sense of individual initiative. In many situations, one can only rely on oneself. In such cases, you have the possibility to achieve the freedom many people dream of, without really giving themselves the means to implement it. Do not allow your entourage to dictate your way of life, over and over again. However, do not fall into the opposite excess: the frenzied individualism of those who value nothing except their own interest! Your life's purpose may be to master your destiny.

The Lunar Nodes highlight all types of discoveries and explorations. There is a strong desire for travels, whether actual trips or spiritual, inner ones. Since your childhood, you are particularly interested in unlimited spaces and total freedom. You never trusted smothering attachments and you always allow your thoughts and actions a free hand. The danger is that your life may be unstable because you so badly need to evolve and to discover... Life is an eternal quest of something else, some vital but hidden dimension that is beyond you. Therefore, it is difficult for you to blossom when your family or work environment is routine. However, it is important that you control your wild tendency (the other side of the coin of the wonderful freedom of thought): life requires more sociability. It does not mean that you must accept a conformism that is too far from your inner aspirations. More than other people, you need to develop your relations, your exchanges and your dialogues. In this regard, your destiny is marked by communication.

## Lilith or the Dark Moon

The Black Moon is the spark of refusal and distance that is dormant in all of us. Depending on the sign where she is found in your chart, she highlights the desire to transform and to sublimate a part of your life. The Black Moon is unfathomable and mysterious. She gives a different dimension to the sector she touches. Her manifestations are subtle; nonetheless, she is powerful, implacable, demanding to the extreme... The Black Moon is also called Lilith. She is the inner flame of your heroism and insubordination.

You pay special attention to your familiar and intimate realm: an importance and a demand, too. You are in search of a setting into which you can totally merge. You do not appreciate half-measures in the family: you want the perfect osmosis or nothing at all! In the long run, this will melt your attitudes into your entourage's may become the cornerstone for a near-to ideal union. However, the danger is that you may shut out solicitations, inevitably disturbing, which are not from your clan.

You are a person thirsting for precision and perfection. Your rebellions are frequent: any mechanism that is not running perfectly smoothly is dismissed. Any person whose attitudes seem inconsistent becomes the object of your refusal. Better than anyone else, you can ridicule social stereotyped models, too conventional and ineffective. It is likely that you often succeed in giving a logical dimension to the craziest situations.

## The Part of Fortune in House

The Part of Fortune is a very ancient fictitious point that depends on the lunar phase at the time of birth. The astrological house tenanted is particularly strengthened. In your chart, the Part of Fortune is in the 1st house: you aspire to be in full control of yourself. Your wealth is within... early in life you develop the taste for individual initiatives and you find your full balance as you give new impulsions to people and things. You are the initiator, the eternal starter. Like all the persons born at the new moon, you have a very personal way of handling life.

## Retrograde Planets

The karmic tradition insists on the issues related to the so-called retrograde planets. They are considered to be the inheritance of a past that was not well experienced, a sort of unfinished business. The interpretations of the retrogradation may seem negative or excessive to you. However, you may relate to a scenario that you have often and repeatedly experienced... as if you underwent several setbacks that all have the same cause. Until the day you become aware of it and you can free yourself from it! Through the slow integration of these planetary energies, you will be able to overcome your difficulties and to pay your karmic debt. Actually, each retrograde planet highlights an opportunity for evolution. Nothing can be achieved without the will to grow spiritually and to defeat your own demons.

The planet Mercury was retrograde on the day of your birth. You probably have to make an effort to harmonize your relations: you are prone to screen others with a critical eye and you do not overlook the slightest flaw. You are exceedingly clear-sighted and you approach your contemporaries with distance rather than with natural. This type of behaviour may be an asset: your enquiring and picky mind prevents you from being too gullible. However, your reservations may impede your communication. As time goes by, you learn to establish contacts more spontaneously. During your childhood, you faced problems of expression in your heart of hearts: your doubts prompted you to project an image that was out of touch with the reality... turbulent or withdrawn, you could hardly establish conventional ties. As an

adult, you are in a better control of these elements. You still have to find the right way to tell who you really are: this is how you can improve your relationships.

The karma associated with Saturn may border on self-censorship: during your childhood, particularly, you were doubtful of your abilities and your talents. You had a propensity to put yourself in a no-win situation and to under-estimate yourself. Obstacles abound: taboos and prohibitions of all kind slow down your evolution. Little by little, you learn to re-evaluate your possibilities and to gain more self-confidence. Your personal rigour then turns out to be constructive: you are not destabilized by life ordeals and you practice a self-discipline that favours steady evolution. Although your path may be steep, it is nonetheless safe.

Uranus was retrograding on the day of your birth: you have the soul of a rebel and your behaviour may often be tyrannical or extremist. Your manner has brought you setbacks. You lack the flexibility that spares you the pain of forcing your ways through events. The danger may be that you get trapped into rigid patterns and into personal logics incompatible with others'. This is precisely what your life's lesson is about: as years go by, your judgments are more qualified and your attitudes become less cut-and-dried, less stubborn. You must lose the essentially individualistic character of your childhood and be more open to other people's ideas and problems. In other words, a path of love. Without losing your remarkable resolution, you must practice some form of renunciation and be sensitive to various logics that constitute the wealth of your social life.

Neptune retrograding concerns spirituality. You may have expressed early in life a few reluctances about the subtle world of faith. You may have ignored destiny's signs and winks and you preferred to stick to your certainties, to a rigorous and objective control of your life. You dread your own aspirations and you readily trust others': this causes a lack of autonomy and the feeling that you may not receive as much as you give. However, several delusions teach you that you must relativize your calculating and methodical attitude and open up to the irrationality of love in order to find an inner and more spiritual progression. Embracing the invisible is a process that unfolds as years and experiences go by. Your own generosity increases as you become aware of your entourage's generosity.

Pluto retrograde suggests power issues and mishandled relations: for you, everything comes down to power struggles, submission and domination, Machiavellian manoeuvres, including within your couple... The results are complex behaviours and an obsession for the power to influence people. Yet, life teaches that you must simplify your relations and adopt more transparent attitudes and healthier desires... As years go by, you will tend towards more simplicity and you will slowly discover that human energy can, and must, be at the service of the good, or of well being, in compliance with our individual progression.

**N.B:** modern astrology attaches less and less importance to the principles of retrograding planets.

## Conclusion

A few remarks are needed here in order to allow you to fully take advantage of your astrological portrait: firstly, do not forget that a birth chart is also a photograph of the sky at birth and a structure that not only contains the personality's characteristics, but also its potential evolution.

We all know that, in real life, people begin to know themselves when they are in their forties, or even later. Likewise, several traits of character in a portrait may seem surprising: in most cases, it means that such features are not yet developed.

Some personalities reveal themselves late in life, whereas others are more precocious. It must be remembered that psychological structures are in a state of continuous evolution because they are influenced by unfolding events and gradual maturity. We can never underline strongly enough the "mobile" nature of the personality, throughout a lifetime.

On the other hand, it is difficult to discriminate what is "already present" at this moment in your life when you are reading your chart's interpretation, from what will appear later in the logic of your evolution: you must sort out all the pieces of information provided and, in most cases, you will see that your astrological portrait is helpful for your endeavours to know yourself better.

Finally, several readings of an astrological portrait are usually necessary in order to absorb all its different meanings and to evaluate the relevance of each character trait.

In any case, better self-knowledge obviously contributes to faster personal blossoming, and it is undoubtedly one of astrology's major roles: contributing to know oneself better, in order to improve more rapidly, to deal with one's weaknesses and to avoid its drawbacks, and to take advantage of one's assets as efficiently as possible.

---