

**Lily-Rose Depp's
Astrological Portrait**





Lily-Rose Depp's Astrological Portrait



Introduction	2
Your Planets, Houses, Aspects, and Natal Chart	4
Preamble	7
Your Planetary Repartitions	8
Your Dominant Modes and Elements	9
Your Dominants: Planets, Signs and Houses	10
Your Style, Behaviour, and Peculiarities	15
Your Sensitivity	19
Your Affectivity	20
The Way You Take Action and Your Sexuality	21
Your Intellect and Your Communication Style	23
Your Goals, Motivations, Career, and Destiny	25
Your Assets and Your Part of Joviality	27
Your Serious Side	27
A Few Special Points	28
Your Isolated Planets	29
Annex 1: Your Minor Dominants	30
Annex 2: Karmic Study	34
Conclusion	37



Lily-Rose Depp's Astrological Portrait

Introduction

To fully benefit from this portrait, we suggest that you read its introduction and its preamble carefully, and then that to take the time to soak up the interpretations of each chapter. Given the large number of texts, which mirrors the human being's complexity, you may need to go through the contents several times, so as to get a good grasp of their meaning and to know yourself better. This will reward your patience.

The purpose of this report is to describe your psychological portrait and to highlight the most fundamental features on the personal area. The report begins with the analysis of your planetary dominants and outlines your personality's general traits before going into further detail. Minor dominants are analysed at the end of Annex 1, for purposes of clarity. Your report then delineates the various facets of your personality:

In general, even when relationships are not involved, we express ourselves and we feel according to our character and our personal motivations: this is indicated by the Ascendant and the Sun sign which both give details on the way we function. They shed a tremendously important light which allows to figure out your personality. Here, we describe your Sun sign (your inner self), your Ascendant (your behaviour as seen by others), and the ruler of the Ascendant (interesting additional pieces of information about the style of your personality). These descriptions alone cover nearly a third or a half of your psychological signature, depending on your natal chart characteristics.

Then, we address your sensitivity, or in other words, the way you receive things and how you express your emotions ; it works as a constant filter for all your exchanges, even when it becomes a more secondary element in your amorous relationship, because at that moment, affectivity prevails. Sensitivity is the way you perceive things, it is your radar, your daily mood, and at the same time, it indicates how you react to your entourage, on a daily basis. It is what others immediately see of you. In the second paragraph, we explain in which areas of life your sensitivity and your emotions are strongest, therefore, where you are most vulnerable.

After this, it is your affectivity, the way you love and how you charm, that comes into play as soon as you fall in love: the first part indicates its basic structure or its main form. The second part describes the areas where it is best expressed and how you display it, according to your personality.

A third fundamental area deals with your mode of action and your sexuality: how you behave, how you manage to obtain what you want, what kind of desires you have. There are twelve possibilities, very

different from one another. The study discloses the specific one that applies to you. In the second paragraph, we explain in which life areas you may most efficiently take advantage of your capacity for action and for conquest.

Your ways of communicating and of thinking are obviously among the major elements that must be integrated into the delineation and the description of your personality. Indeed, they influence your general behaviour and may modify or enhance the image your project (for instance, extraversion may “compensate” a weak affectivity, but a huge number of cases are possible). An additional chapter indicates the favourite areas where you enjoy communicating, thinking and meeting with people.

Besides, we analyze an even more personal aspect that is important to define and understand what may occur within your couple: each of us have a centre of interest, a privileged manner to be fulfilled or to achieve our destiny; this main motivation is indicated by the positions of your Sun and your chart ruler in the astrological houses and we provide you with its detailed description.

A natal chart contains the potential for specific fulfilment and a whole range of assets, protections and qualities. How does the lucky factor manifest in your personality? In which area can you best exploit your qualities? The answers are precisely revealed to you in this chapter.

On the other hand, we all feel in us a part of vulnerability, doubts and fears. How does this part of solemnity or serious side play out? How is it possible to handle it in order to evolve and to get rid of useless elements? All this information is provided to you in these two paragraphs.

Then, you can discover three additional traits of your personality that must be considered as secondary ones. They deal with your predispositions, which means that they need to be triggered by external events because they are not influenced by your will; let's call it a part of fate. Please, bear in mind that your destiny can unfold only in accordance with what you are: therefore, even if they belong to your more unconscious self, these characteristics are parts of you, definitely.

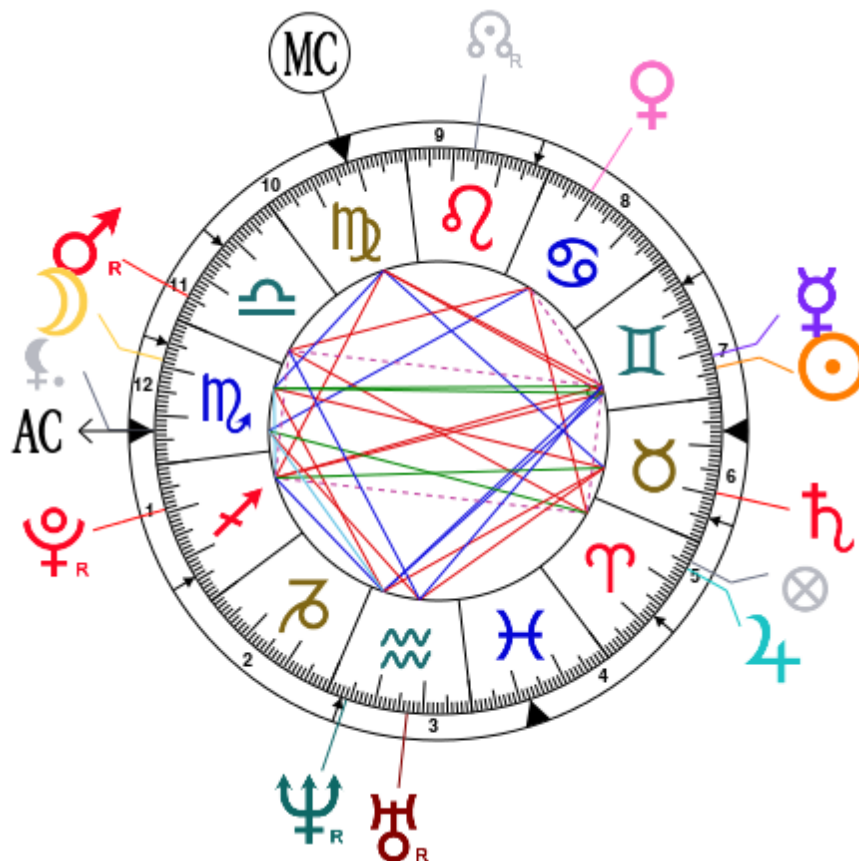
The karmic chart complements the psychological portrait or natal chart. It is based on the positions of the Lunar Nodes, the Black Moon, and the Part of Fortune. These elements of the chart, sometimes referred to as fictitious points, provide information about the spiritual meaning of your destiny. Owing to the fact that we all have in us acquired knowledge and the urge to go on a quest, our life is an evolutionary journey... However, these texts must be read with great caution: this is the reason why you will find this analysis in the Annex 2 of your report.

Your Planets, Houses, Aspects, and Natal Chart

Lily-Rose Depp, born May 27, 1999, at 08:25 PM, Neuilly sur Seine (Ile-de-France), France [2.16E ; 48.53N ; 2E00]

Natal Planets				In House	Natal Houses (Placidus)		
☉ Sun	6°02'	♊ Gemini		House 7	House 1	23°09'	♏ Scorpio
☾ Moon	8°37'	♏ Scorpio		House 12	House 2	24°11'	♐ Sagittarius
☿ Mercury	8°30'	♊ Gemini		House 7	House 3	3°08'	♒ Aquarius
♀ Venus	20°41'	♋ Cancer		House 8	House 4	11°59'	♓ Pisces
♂ Mars	24°49' R	♎ Libra		House 11	House 5	12°30'	♈ Aries
♃ Jupiter	24°07'	♈ Aries		House 5	House 6	5°14'	♉ Taurus
♄ Saturn	10°33'	♉ Taurus		House 6	House 7	23°09'	♉ Taurus
♅ Uranus	16°47' R	♒ Aquarius		House 3	House 8	24°11'	♊ Gemini
♆ Neptune	4°15' R	♒ Aquarius		House 3	House 9	3°08'	♌ Leo
♇ Pluto	9°13' R	♐ Sagittarius		House 1	House 10	11°59'	♍ Virgo
♁ Node	15°45' R	♌ Leo		House 9	House 11	12°30'	♎ Libra
♇ Lilith	23°00'	♏ Scorpio		House 1	House 12	5°14'	♏ Scorpio
AS AS	23°09'	♏ Scorpio					
MC MC	11°59'	♍ Virgo					

In keeping with the common practice, we consider that a planet posited within 1 degree of the next house belongs to that house. We allow an orb of 2 degrees for the ASC and the MC.



List of Your Active Planetary Aspects

Please find below the list of all the active inter-aspects which are interpreted in this report, in addition to your planets in sign, in house, and all your planetary dominants. Since the aspects between slow-moving planets are of a collective nature, they are not displayed, in compliance with our interpretation rules.

- ☆☆☆☆☆ Sun inconjunction Moon, orb 2° 35'
- ☆☆☆☆☆ Sun conjunction Mercury, orb 2° 28'
- ☆☆☆☆☆ Sun semi-square Venus, orb -0° 2'
- ☆☆☆☆☆ Sun trine Neptune, orb 1° 46'
- ☆☆☆☆☆ Sun opposite Pluto, orb -3° 11'
- ☆☆☆☆☆ Sun square Midheaven, orb 5° 57'
- ☆☆☆☆☆ Moon inconjunction Mercury, orb 0° 06'
- ☆☆☆☆☆ Moon opposite Saturn, orb -1° 55'
- ☆☆☆☆☆ Moon square Neptune, orb -4° 21'
- ☆☆☆☆☆ Moon semi-sextile Pluto, orb 0° 36'
- ☆☆☆☆☆ Moon sextile Midheaven, orb -3° 22'
- ☆☆☆☆☆ Mercury sesqui-quadrate Mars, orb 1° 19'
- ☆☆☆☆☆ Mercury semi-square Jupiter, orb -0° 36'
- ☆☆☆☆☆ Mercury trine Uranus, orb -8° 16'
- ☆☆☆☆☆ Mercury trine Neptune, orb 4° 15'
- ☆☆☆☆☆ Mercury opposite Pluto, orb -0° 42'
- ☆☆☆☆☆ Mercury square Midheaven, orb 3° 28'
- ☆☆☆☆☆ Venus square Mars, orb 4° 08'
- ☆☆☆☆☆ Venus square Jupiter, orb -3° 26'
- ☆☆☆☆☆ Venus trine Ascendant, orb 2° 28'
- ☆☆☆☆☆ Mars opposite Jupiter, orb -0° 42'
- ☆☆☆☆☆ Mars trine Uranus, orb -8° 02'
- ☆☆☆☆☆ Mars semi-square Pluto, orb -0° 36'
- ☆☆☆☆☆ Jupiter inconjunction Ascendant, orb 0° 57'
- ☆☆☆☆☆ Saturn trine Midheaven, orb 1° 26'
- ☆☆☆☆☆ Uranus square Ascendant, orb -6° 22'
- ☆☆☆☆☆ Neptune quintile Ascendant, orb -0° 54'
- ☆☆☆☆☆ Pluto square Midheaven, orb -2° 45'

Meaning of Stars

Stars indicate the strength of the aspects. Two solid coloured stars (there are half-stars also), mean that the aspect is powerful enough to be noticed at the first reading.

We strongly advise that you read the paragraphs displaying less than two stars later on, after you have absorbed the full import of the other texts.

The yellow colour indicates a soothing and conciliating aspect, and the red colour, a dynamic and tense aspect. The red aspects enable you to evolve, to take action, and to learn to turn your "weaknesses" into assets through your life experiences. The yellow aspects are innate strengths on which you rely in order to grow better with the former...

Preamble

When interpreting a natal chart, the best method is to start gradually from general features to specific ones. Thus, there is usually a plan to be followed, from the overall analysis of the chart and its structure, to the description of its different character traits.

In the first part, an overall analysis of the chart enables us to figure out the personality's main features and to emphasize several points that are confirmed or not in the detailed analysis: in any case, those general traits are taken into account. Human personality is an infinitely intricate entity and describing it is a complex task. Claiming to rapidly summarize it is illusory, although it does not mean that it is an impossible challenge. It is essential to read a natal chart several times in order to absorb all its different meanings and to grasp all this complexity. But the exercise is worthwhile.

In brief, a natal chart is composed of ten planets: two luminaries, the Sun and the Moon, three fast-moving or individual planets, Mercury, Venus and Mars, two slow-moving planets, Jupiter and Saturn, and three very slow-moving planets, Uranus, Neptune and Pluto. Additional secondary elements are: the Lunar Nodes, the Dark Moon or Lilith, Chiron and other minor objects. They are all posited on the Zodiac wheel consisting of twelve signs, from Aries to Pisces, and divided into twelve astrological houses.

The first step is to evaluate the importance of each planet. This is what we call identifying the dominant planets. This process obeys rules that depend on the astrologer's sensitivity and experience but it also has precise and steady bases: thus, we can take into account the parameters of a planet's activity (the number of active aspects a planet forms, the importance of each aspect according to its nature and its exactness), angularity parameters; (proximity to the four angles, Ascendant, Midheaven, Descendant and Imum Coeli or Nadir, all of them being evaluated numerically, according to the kind of angle and the planet-angle distance) and quality parameters (rulership, exaltation, exile and fall). Finally, other criteria such as the rulership of the Ascendant and the Midheaven etc. are important.

These different criteria allow a planet to be highlighted and lead to useful conclusions when interpreting the chart.

The overall chart analysis begins with the observation of three sorts of planetary distributions in the chart: Eastern or Western hemisphere, Northern or Southern hemisphere, and quadrants (North-eastern, North-western, South-eastern and South-western). These three distributions give a general tone in terms of introversion and extraversion, willpower, sociability, and behavioural predispositions.

Then, there are three additional distributions: elements (called triplicity since there are three groups of signs for each one) - Fire, Air, Earth and Water - corresponding to a character typology, modality (or quadruplicity with four groups of signs for each one) - Cardinal, Fixed and Mutable - and polarity (Yin and Yang).

There are three types of dominants: dominant planets, dominant signs and dominant houses. The novice thinks astrology means only "to be Aries" or sometimes, for example, "to be Aries Ascendant Virgo". It is actually far more complex. Although the Sun and the Ascendant alone may reveal a large part of the character - approximately a third or a half of your psychological signature, a person is neither "just the Sun" (called the sign) nor just "the first house" (the Ascendant). Thus, a particular planet's influence

may be significantly increased; a particular sign or house may contain a group of planets that will bring nuances and sometimes weaken the role of the Ascendant, of the Sun sign etc.

Lastly, there are two other criteria: accentuations (angular, succedent and cadent) which are a classification of astrological houses and types of decanates that are occupied (each sign is divided into three decanates of ten degrees each). They provide some additional informations.

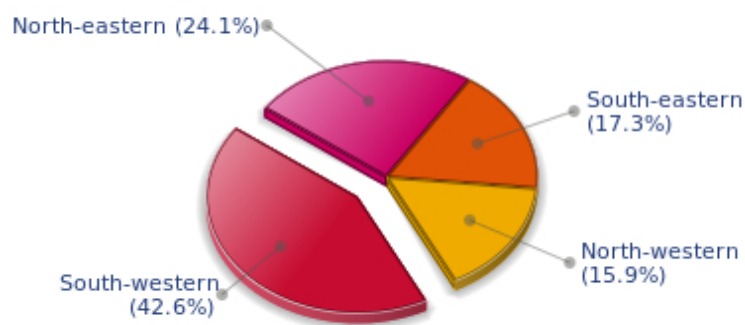
These general character traits must not be taken literally; they are, somehow, preparing for the chart reading. They allow to understand the second part of the analysis, which is more detailed and precise. It focuses on every area of the personality and provides a synthesis of all the above-mentioned parameters according to sound hierarchical rules.

As explained in the introduction of your Psychological Portrait report, minor dominants are analysed at the end of Annex 1, for purposes of clarity.

Your Planetary Repartitions

Each quadrant is a combination of the four hemispheres of your birth chart and relates to a character typology. The Southern hemisphere – the top of your chart, around the Midheaven – is associated with extraversion, action, and public life, whereas the Northern hemisphere prompts to introversion, reflexion, and private life. The Eastern hemisphere – the left part, around the Ascendant – is linked to your ego and your willpower, whereas the Western hemisphere indicates how other people influence you, and how flexible you are when you make a decision.

Your Four Quadrants

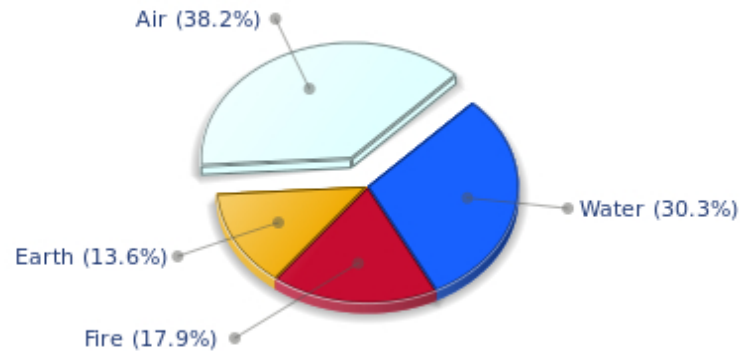


Lily-Rose Depp, the diurnal South-western quadrant, consisting of the 7th, 8th and 9th houses, prevails in your chart: this sector brings about a thirst for communication and sometimes, a need to take risks in your dealings with others. Relations are a factor of your evolution and your transformation, which you accept serenely. Indeed, what matters to you is the movement and the energy that link you to others and that make you gain more awareness. A kind of rebellion or a desire to get away from it all is rooted in you.

Your Dominant Modes and Elements

Lily-Rose Depp, here are the graphs of your Elements and Modes, based on planets' position and angles in the twelve signs:

Your Four Elements

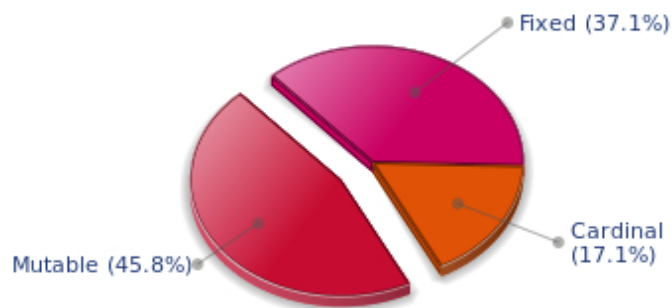


Cheers for communication and mobility, Lily-Rose Depp! The predominance of Air signs in your chart favours and amplifies your taste for relations and for all kinds of short trips, whether real (travels) or symbolic (new ideas, mind speculations). You gain in flexibility and adaptability what you lose in self-assertion or in pragmatism.

The predominance of Water signs indicates high sensitivity and elevation through feelings, Lily-Rose Depp. Your heart and your emotions are your driving forces, and you can't do anything on Earth if you don't feel a strong affective charge (as a matter of fact, the word "feeling" is essential in your psychology). You need to love in order to understand, and to feel in order to take action, to the detriment of a certain vulnerability against which you should learn to fight.

The twelve zodiacal signs are split up into three groups or modes, called quadruplicities, a learned word meaning only that these three groups include four signs. The Cardinal, Fixed and Mutable modes are more or less represented in your natal chart, depending on planets' positions and importance, and on angles in the twelve signs.

Your Modes



The Mutable mode is the most emphasized one in your natal chart, Lily-Rose Depp, which indicates a mobile character that is curious and thirsty for new experiences and evolution. You are lively and flexible, and you like to react quickly to solicitations, but don't confuse mobility with agitation, since this is the danger with this configuration - and with you, stagnation is out of the question. Security doesn't matter as long as you are not bored. You optimize, you change things, you change yourself... all this in a speedy way.

Your Dominants: Planets, Signs and Houses

The issue of dominant planets has existed since the mists of time in astrology: how nice it would be if a person could be described with a few words and one or several planets that would represent their character, without having to analyse such elements as rulerships, angularities, houses, etc!

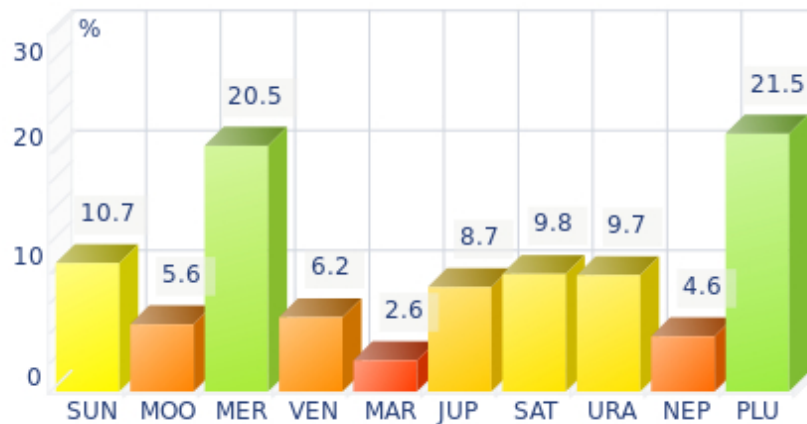
The ten planets - the Sun throughout Pluto - are a bit like ten characters in a role-play, each one has its own personality, its own way of acting, its own strengths and weaknesses. They actually represent a classification into ten distinct personalities, and astrologers have always tried to associate one or several dominant planets to a natal chart as well as dominant signs and houses.

Indeed, it is quite the same situation with signs and houses. If planets symbolize characters, signs represent hues - the mental, emotional and physical structures of an individual. The sign in which a planet is posited is like a character whose features are modified according to the place where he lives. In a chart, there are usually one, two or three highlighted signs that allow to rapidly describe its owner.

Regarding astrological houses, the principle is even simpler: the twelve houses correspond to twelve fields of life, and planets tenanted any given house increase that house's importance and highlight all relevant life departments: it may be marriage, work, friendship etc.

Lily-Rose Depp, here is the evaluation diagramme for your planets:

Your Dominant Planets



The three planets that are most highlighted in your chart are Pluto, Mercury and the Sun.

With Pluto as a dominant planet in your chart, you are a magnetic and mighty predator, like the Scorpio sign ruled by this planet, who needs to exert pressure on others in order to "test" them. You are always ready to evolve, to risk destruction for reconstruction - including your own - to live more intensely whilst imposing your secret authority on things and on people you encounter.

You may come across as wicked, cruel or too authoritarian, but actually you only follow your instinct, you sound people out, and you like to exert your domination simply because your vital energy is too powerful to remain inside. You are inclined to be passionate, with hidden motivations. You are sometimes misunderstood but one of your great Plutonian assets is to go successfully through each life ordeal with ever growing strength.

With Mercury among your dominant planets, you are certainly cerebral, nervous, swift, curious, quick-witted, and you love to communicate. Your psychological pattern is intellectual, all the more so since Mercury is important, with its whole set of assets but also of weaknesses, obviously.

Your sensitivity, emotions, and heart's impulses give precedence to thinking, which can lead people to believe that you are a playful and witty but heartless person, intellectualizing situations and juggling with words and numbers whilst ignoring human aspects of things. Of course, it is said that cats always land on their feet - this is your Mercurian strength and your trump card!

Your weakness lies in your nervousness, and you may miss your goal because of your "over-intellectualization" that may be detrimental to other kind of energies such as instinct, spontaneity, heart, sensitivity, etc.

One of the dominant planets in your birth chart is the Sun. He symbolizes will, magnetism, sense of honour and dignity. You are a Solar being, and you often display charismatic and leadership qualities. Your warmth and your persuasive power lead you far away from pettiness. You enjoy thinking big and, consequently, you move forward according to what you decide.

Your Solarian weakness may be related to the sin of pride or to excessive authority. The frontier between

pride and vanity is tenuous: be careful not to overstep it and to keep the nobleness of heart that is part of your charm.

Your Dominant Signs



In your natal chart, the three most important signs, delineated according to the above-mentioned criteria, are, in decreasing order of strength, Gemini, Scorpio and Sagittarius. They are often prominent because your Ascendant and your Sun are posited there. However, it is not always the case: it may be because they are occupied by a cluster of planets, by a planet near an angle other than the Midheaven and the Ascendant, or because two or three planets are very active and form numerous aspects from these signs. Therefore, you partly take on the three signs' characteristics, which are somehow superimposed on your natal chart, and all the more so if any of the signs in question is highlighted.

With Gemini as a dominant sign, your qualities include being lively, curious, mobile, clever, and flexible: you often make others dizzy, and you may come across as a dilettante - a bit inquisitive, shallow, and insensitive because you may be too intellectualizing. However, your natural curiosity, a nice quality, and your quick humour, allow you to demonstrate to everyone how much they may gain from your company, and that your apparent flightiness hides an appetite (particularly mental) for life, which itself conceals a terrific charm!

With Scorpio as a dominant sign, you are a strong and astute person, complicated and passionate, sometimes destructive and intolerant, but strong-willed, tough and daring, sometimes bordering on aggressive. So many qualities and dangers combined in one person! Obviously, this often results in a natural selection of people around you: those who stand up to you or admire you and those who can't bear you anymore! But that is precisely what you want. You are what you are and you are not going to transform yourself just to please. You are too proud and you never dread confrontations, although your way of fighting is secret, as is your nature that, mysteriously enough, you are so reluctant to reveal even to your close friends who will never understand you. That said... what a hellish charm you have!

Sagittarius, an adventurous and conquering fire sign, is dominant in your chart: you are enthusiastic, enterprising, optimistic, very sociable, and mobile - you have itchy feet both physically and mentally. Nobody gets bored with you because you are always planning things and suggesting excursions, at least... when you are around and not already gone on a trip! Obviously, so many movements for one woman may scare people off, and some of them may even criticize your brutality or your tendency to lose your temper, but you are so warm and genuine, so expansive, isn't this a good thing? And all the

more so, since your sense of humour is overwhelming...

Your Dominant Houses



Houses 7, 1 and 12 are the most tenanted ones in your natal chart. To compute their strength, planets and angles are weighed according to various astrological criteria such as swiftness, activity, angularity, rulership etc. From the analysis of the most tenanted Houses, the Astrologer deduces the fields of activity that are most relevant to you, be it because of what you are experiencing, or what you may experience in the future, or because of your deep inner motivations.

Your 7th house is one of your dominant houses: it symbolizes other people, marriages, associations, contracts, and partnerships. Your personal achievement and maybe your problems - depending on the rest of your chart - are strongly influenced by your rapports with others, the area in which you tend to commit yourself deeply. You appreciate communication, and you give importance to others' opinions. Success requires the support of others, which seems obvious and natural to you. Your marriage generally contributes to your fulfilment.

With a dominant 1st house, your magnetism is powerful, and your individuality as well as your willpower are out of the ordinary. You are a determined, strong-willed, and assertive person, with this relative criterion at least.

It is likely that you never go unnoticed when you are in a crowd or a in reunion: an important 1st house suggests that you are a charismatic person with above average vital energy, especially if the Sun is present in this sector.

Your personal interests are always important and you never forget them, which doesn't mean that you are self-centered, but only that you behave according to what is in harmony with your deep nature!

The 12th house is emphasized in your chart: like the 8th house, it has a rich and complex meaning. Although its bad reputation is likely to scare most readers in the first place - it is indeed the house of hidden or isolated places, of solitude, of ordeals or enemies - it can also mean that a part of your life is very deep and intense. If your achievements are not visible in the public eye, you may fulfil yourself in a different but equally important way: you may be involved in secret activities, humanitarian causes, and projects in favour of disadvantaged people. You are likely to work in quiet and remote places. In many cases, you will gain from these hidden activities as many treasures as people who have a more public

destiny. It may be because you sublimate your work, or only because you successfully carry out your task within your environment. There is no such things as a good or a bad house, because each area of life is necessary in its own way, and we need all of them, if we are to improve spiritually.

Your Style, Behaviour, and Peculiarities

What is commonly known as "sign" indicates the position of the Sun in the Zodiac. The Sun highlights all the characteristics of the sign he tenants. According to astrology traditional rules, these characteristics are all the more pure and exact when the Sun is strong in the sign, or when the sign is particularly highlighted within the chart. Here, we indicate the pure characteristics of the sign but you must bear in mind that they may only shed a light on a particular aspect of your personality. Indeed, the sole sign of the Sun, or of the Ascendant, can never describe an astrological chart because it depends on the degree of strength of the said sign in your chart.

Another important point must be underlined. Contrary to the Ascendant, which clearly describes your appearance, your vitality, your physical constitution, your spontaneous behaviour and the image you project, your Sun sign describes your inner self, which you may not completely be aware of, and which may emerge gradually as you mature: it is about your inner personality that you reveal only to the members of your entourage whom you trust. The Sun sign is likely to be the final form of your personality, once it has evolved in line with the energies of the other parts of your chart, the beginning of which is seen in the Ascendant, your external "bark".

The Ascendant is one of the major components of your natal chart. It is the zodiacal sign that rises in the East at the very moment of your birth. To calculate it, it is therefore necessary to know your exact time of birth.

It provides with a wealth of information on your personality. It is one of the key features that allows the analysis of several parts of you, such as your appearance, your character as it is initially perceived and your immediate behaviour. It describes the external aspect of your personality which you always display, but it also describes your physical constitution in the long-term, in other words, your health.

Please be aware that, in spite of the importance of the Ascendant, the accuracy of its description depends on how strongly highlighted it is in your natal chart. We use the entire set of astrological rules to assess the strength of the Ascendant. In most cases, the Ascendant is as revealing as your "sign", i.e., the sign where the Sun is posited at the time of birth.

You were born under the sign of Gemini and your Ascendant is in Scorpio

Before broaching the details of the meaning of your Sun and your Ascendant, as a preamble, we offer a brief generic interpretation of their combination in your chart:

Wouldn't you be some kind of prankster? Do admit that you cannot help putting your finger on the detail which seems wrong. Although Gemini and Scorpio are very different, they have in common an excellent knowledge of human relations and the art of finding the right word. With your Ascendant in the Fixed Water sign of Scorpio, you cannot be easily tamed, and you are reserved and punctilious in your contacts, as if you needed to test people before you can admit them into your private circles. Your Gemini Sun defines your inner self and contrasts with your instinctive Scorpio behaviour. Indeed, no sign is more flexible and sociable than Gemini, even though it shows a lack of politeness at times. Actually, it is just being natural, and it wishes to be treated in the same way. It can't be bothered with formal behaviours because it believes that everyone is a potential friend. When people meet you for the first time, they

perceive something tensed in your attitude, but as they get to know you more, they realise that it is only a facade for your casual and light-hearted essence. Having said this, it is necessary to underline that Scorpio and Gemini perform equally well when they want to throw the members of their entourage off balance, each in its own ways.

You were born with the Sun in Gemini

Your mobility is such that you are in every place where you are not expected. You spend lots of time asking questions and... answering them. Your curiosity and your quick-wittedness are insatiable. Your mind is in constant turmoil, hopping from one topic to another, solving problems, accumulating anecdotes and knowledge within a short range of time. Your mobility is mostly mental, it takes you afar and turns your daily life into a mosaic of intense and pleasant moments that are not necessarily related to one another...

As you are born under this sign, you are nervous, expressive, lively and adaptable, with a quick mind and a good sense of humour. You are bubbling, playful, sociable, clever, curious, whimsical, independent, intellectual, flexible, ingenious, fanciful, imaginative, charming, cerebral, and you are into everything. You may also be whimsical, unfocused, quirky, superficial, indiscreet, opportunist, unmindful, selfish, sarcastic or mercurial.

In love, Madam, you are full of intelligence and liveliness. You are so subtle, so whimsical, that you could be seen as a “teaser” because you can seduce in any situation. The more complex they are, the more numerous the contacts, the better.

Among all the Zodiacal signs, you are the outstanding one who can “manage” several simultaneous love affairs. It is not a matter of vice, but only of voluptuous pleasure of the instant. If they do not take place at the same time, your amorous encounters may be short-lived. But their number is very considerable because you constantly want to keep boredom and monotony at bay and you frantically run away from any source of peace and calm.

You will probably marry more than once. For you, the Sun symbolizes first the father then the husband: Gemini being a double sign, and your father being unique, it is likely that you will have two or more husbands. However, this is not a fatality and the rest of your chart can easily tell you more.

Your Ascendant is in Scorpio

Psychologically speaking, your nature is bilious, with aggressive impulses that lead you towards the transformation of your entire being and, continuously, of the situation surrounding you. You seem to be constantly struggling for your self-assertion. You cannot refrain from testing others with cutting remarks, not because you want to hurt them, but because you want to know them better through their reaction; for you, life and the feeling of aliveness are experienced through rebellion and tension. You may be manipulative and your aggressive attitude may equate with sly inquisition. You often remain silent, introverted and secretive, mulling over turbulent thoughts in the depths of your mind, leaving others puzzled by your somewhat peculiar behaviour.

As you are born under this sign, you are secretive, powerful, domineering, enduring, intuitive, assertive, charismatic, magnetic, wilful, daring, clear-sighted, passionate, creative, independent, vigorous, generous, loyal, hard-working, persevering, indomitable, possessive, shrewd, stubborn, ambitious,

instinctive, tenacious, sexual, sexy, proud, intense and competitive. But you may also be aggressive, destructive, stubborn, anxious, tyrannical, perverse, sadistic, violent, self-centered, complex, critical, cruel, nasty, jealous, calculating, vulnerable and dissembling.

You are a hard-worker, enduring and serious. You follow all things through and your obstinacy is nice to see, particularly when your undertakings are not wrong, which seldom happens thanks to your immense insight that is almost that of a medium.

In love, Madam, you are all passion and sex appeal. Since your young age, you understood the sexual and magnetic attraction powers that you convey: like a predator, you choose, you take action and you catch in your nets the men you desire until you lose interest in them. The only men who can really stand the test of time are those who will resist you or subject you unconditionally, and whom you will respect for the rest of your life. They can also be men who will be totally submissive and, because of their absolute love for you, accept to live a hell of a life by your side, totally depending on you.

You use your seductive powers wonderfully well but when you find your soul mate, hopefully he will be as strong as you are, you will be a one-man woman, throughout your life. You will be an exceptional lover, loyal, possessive but sentimental, courageous and magnetic. There will be no boredom in your relationship where passion will be expressed with all the violence and the thirst for the absolute that inhabit you.

The ruler of your chart is in Sagittarius

The ruler of the Ascendant, also referred to as the chart ruler, brings a few interesting nuances to the meanings provided by the Sun and the Ascendant. The sign in which the ruler of the Ascendant is posited fine-tunes the style of personality described by the Sun and the Ascendant. It may strengthen it if the sign is identical to either of them.

The ruler of the Ascendant, Lily-Rose Depp, is Pluto. It is posited in the sign of Sagittarius and gives you a strong inclination for the open sea and for freedom. Loyal and benevolent, you put things into perspective, and you understand the true value of things, perhaps precisely because you travel - whether actually or mentally - and that stepping back from your intimate environment enables you to better perceive what is important and worthy.

Aspects to your Ascendant

Several planets form an aspect with your Ascendant, Lily-Rose Depp. Therefore, in their specific way, they modify your behaviour and your personality, which do not take on the pure characteristics of your Scorpio Ascendant only, but which are a blend of its characteristics with those of the said aspects.

★★★★☆ Venus trine Ascendant, orb 2° 28'

Thanks to Venus, Lily-Rose Depp, your behaviour is in harmony with your affective life, and you need not make any special effort in order to express your feelings in a natural way and without arousing people's criticisms. This asset enhances your natural easiness and charm, which is definitely not unpleasant!

★★★★★ Jupiter inconjunction Ascendant, orb 0° 57'

A dissonance between Jupiter and the Ascendant is not too serious, Lily-Rose Depp. In some circumstances, it may cause your behaviour or your opinions to be a bit exaggerated when you are in society. Therefore, you may come across as too proud or excessive. It is up to you not to overdo, so as not to arouse your entourage's incomprehension. This excess may also translate into a marked taste for pleasures or good food...

★★★★★ Uranus square Ascendant, orb -6° 22'

This dissonance of Uranus with your Ascendant endows you with a rebellious, original, and unpredictable side, which gives your behaviour a note of dynamism and nonconformism. Of course, other people are sometimes deeply disconcerted by your attitude which does not fit classical or social standards, and you may suffer its consequences, meaning that you feel misunderstood, incorrectly perceived, and considered as a disturbing free electron, or an untrustworthy person. You must remain true to yourself, but at the same time, you must exercise some caution in order not to fall prey to unpleasant misunderstandings.

★★★★★ Neptune quintile Ascendant, orb -0° 54'

Neptune in soft aspect with your Ascendant endows you with a sharp intuition which enables you to instinctively adopt the behaviour which your entourage appreciates, Lily-Rose Depp. You have the natural flair which prevents you from making errors of judgment on people. You understand the crowd, and you have the good reflexes for being well-accepted by all.

Your Sensitivity

Your sensitivity is intuitive and clear-sighted Lily-Rose Depp. Your exacerbated affectivity and your emotions are secretive, intense, deep and sensual. Your magnetic nature seduces. You are aware of the strange fascination you exert and you gladly cultivate this mysterious aura. Your feelings are so powerful that you may feel you should repress them sometimes. But the more you try to control them, the stronger they grow. Therefore, your jealousy may reach such levels that it may hurt. Without half-measure, you become aggressive and you can harm because your inner radar instinctively detects other people's weaknesses. Your emotions are often filled with eroticism and you are an explosive blend of lucidity, amorous intensity and constant provocation but... you are so charming! Your nature is attractive, even bewitching. After all, the only persons you offend are the middle course followers...

Lily-Rose Depp, you find it hard to show what you feel, or you simply consider that it belongs to you and must not be exposed. Anyway, even if your emotions are rich and deep, you keep them inside and you don't wear your heart on your sleeve. Very few persons are able to guess your mood of the moment.

Obviously, you still can be popular, and in that case, it is probably related to a humanitarian context or it involves your dedication. Indeed, the personal side is blurred and this fact allows you to express your feelings without having to open up too much.

★★★★★ Moon opposite Saturn, orb -1° 55'

When this aspect is not well integrated, there is no feeling of integration and security. You feel that you are not understood or even, that you are rejected. It is difficult for you to find inner peace and tranquillity. You lack the quietness and the primordial confidence that would allow you to lay back and to be carried away and pampered by life. This configuration indicates questionings and doubts regarding the unconditional affection that each individual longs for. You do not trust the world. You tend to dismiss social models, as well as your close friends' attachment and tenderness, probably because you need to test them and to get the feeling of being loved that you naturally lack. It would be a mistake not to see that you desperately need affection. You are particularly vulnerable to relationship flaws and you strive to find the gestures of love that would allow you to let go and to be nurtured by life. In such a context, the sincerity you display, as you give or refuse your trust, is highly commendable.

★★★★★ Moon square Neptune, orb -4° 21'

This Moon-Neptune dissonance wonderfully turns on the poetic soul, the exhilaration of feelings and dreams... and disturbs your practical life, as well as the management of contingencies. You do not lack inspiration but your reasons of living may be beyond your entourage's understanding! Bohemian life is pleasant but it is probable that you experience muddled situations. Your aims are noble and your intentions are very good. But you may not have the will to turn them into reality. It is important that you are wary of artificial paradises: escaping in the imaginary is not necessarily the best solution for problem solving. You are in search of an inaccessible tranquillity and you tend to procrastinate chores. Nevertheless, facts remain present and you may see that non-interventionism can only increase your difficulties. You must put an end to this vicious let-go circle. This does not imply that you have to forsake your dreams or to repress your very rich sensitivity.

★★★★★ Moon semi-sextile Pluto, orb 0° 36'

You are a riddle for people... and for yourself. This harmonious Moon-Pluto aspect arouses your desire to understand and to express elements hidden in your unconsciousness. You are interested in the occult, in laws that rule beings and things in the dark. You like to pull strings and to manipulate situations

without people's knowledge in order to remain mysterious. You feel fine when you are not in the limelight, but you intervene in the dark, with subtlety. Your intimate behaviour reveals the distance that you strive to keep in order to protect your inner life. You gladly cultivate the angel of the bizarre, even in your life habits and in your daily rhythms.

★★★★★ Sun inconjunction Moon, orb 2° 35'

In your chart, two polarities are clearly opposing - or complementing – each other: on the one hand, solar values, the image you project and the models you follow. On the other hand, lunar values, moments of letting-go and well being through casualness. When you commit yourself in a project, it is often to the detriment of your peace of mind. Conversely, you completely feel that you are your true self only when you are no more under the scrutiny of the outside world. Therefore, you separate your social and professional activities from your private life and you seldom match the requirements of the former with those of the latter. It may be a hurdle, a fundamental anxiety. It may also be an obvious asset, when it is well integrated: in that case, you succeed in assigning to yourself, and in fulfilling, objectives that are not necessarily in line with your intimate natural demands, which are preserved and separated from your intentions, your ambitions and your expectations. Thus, a strong will can turn this Sun-Moon hard aspect into a rich instrument for creativity. A shadow zone, or uncertainty, still remains: on the affective plane, you are very sensitive. May be too much, to the extent that you become vulnerable in many circumstances. Because in different periods of your life, your landmarks (solar) and your intimate balance (lunar) will be simultaneously challenged.

Your Affectivity

In your chart, the Sun is in Gemini and Venus, in Cancer. It is difficult to imagine a more complementary – and opposite – combination of solar and Venusian signs. Gemini discovers, whereas Cancer integrates. The former implies a communication function and the latter, a protection function. It influences your affectivity with the paradoxical character proper to any double-faced configuration: love is just a game, but a trapping game. There is a strong inclination for novelty, comedy and whims. Without these ingredients, your love life would be very dull. You respond to flirting and to the entertainments offered by your seduction. However, you do not allow everybody into your affective realm. This is a restricted and valued area. Indeed, despite appearances, despite your real capacity to exchange and to communicate, your affectivity is particularly selective and you are comfortable only with people whom you know well and with whom you naturally feel in harmony. You may get caught in your own traps: your ever searching soul, your eagerness for experiences and discoveries, but also, your need for a slowly maturing, isolated and privileged relationship. In addition, you have a very unusual romantic trend that flavours your sentimental life with salt, sugar and... pepper.

You are sensitive, vulnerable and tender at the same time, Lily-Rose Depp. When you love, you give your entire affection and your partner may in all confidence rely on a long-lasting and reassuring relationship. You are so calm and so tender that you think that it is enough to win over your partner's heart, and you are often right. However, do not mix up giving and receiving. You so deeply need to receive love in return that you may be too passive and in the long run, as you become demanding, you may show immaturity. Security and sustainability in your relationship are of utmost importance. Your family also is important, it is the refuge, even the sanctuary, where you like you hide when things go awry. You also dream of love, may be too much, and it may be detrimental to what might be concretely experienced if you were more dynamic or less fearful to get hurt. However, remember that you receive only as much as

you give.

When you fall in love, Lily-Rose Depp, your feelings immediately reach a considerable level of intensity and quickly take you into the realm of passion. You are not a mild person when it comes to love, either you love deeply, or not at all. According to the Tradition, this configuration strongly associates feelings and sexuality. In your approach to love, feelings are intimately linked to desire and love physical aspects. It does not take you long before you deliberately infuse a fair amount of torrid eroticism into your behaviour, so as to make your idyll as burning and deep as your inner feelings are! If no adverse aspect affects Venus in the 8th house, you become possessive in the positive sense of the term: you happily care for your significant other, including for his financial interests. Venus in the 8th house protects everything that deals with investment, management of other people's possessions and particularly, those of the husband. Your benevolent attitude, which you also express outside your couple's relationship, usually causes pleasant surprises in the guise of unexpected inheritances. When there are tense aspects of square or opposition to your Venus, you may fall into the trap of obsessive and dangerous jealousy. And it would be a disgrace since, as the saying goes, jealousy is uncalled-for and very harmful when it is unjustified, and it is useless and too late when harm has been done...

★★★★☆ Venus square Jupiter, orb -3° 26'

This Venus-Jupiter dissonance indicates a strong will to seduce. However, there may be discrepancies between your words and your actions, as well as between your behaviour and your instinctive reactions. You may be carried away by a maelstrom of emotions, feelings and pleasures and you do not consider the possible consequences of your superficial attitude. Therefore, the apparent state of grace may turn into delusion. Proprieties and necessities of the moment forbid you to experience your desires. What you deem reasonable does not suit your heart's impulses. What a dilemma... Hopefully, as time goes by, you may reconcile your desires, your life patterns and the reasons of your heart with those of your mind.

★★★★☆ Venus square Mars, orb 4° 08'

This Venus-Mars aspect indicates a sensitivity all on edge and an impulsive character. Emotions and heart impulses cause a marked tension. Life is an affective battlefield. Love is omnipresent but often fragile: impulsiveness reigns over the realm of feelings. The object of desire may become irresistible and implacable, or the sense of confrontations prevents affective tranquillity. However, the richness of your emotional responses is to be noted: you are more inclined than others to be guided by amorous fevers and you live intense passionate experiences. Your overwhelming impressionability must be contained. Romantic people seldom enjoy tranquillity!

★★★★☆ Sun semi-square Venus, orb -0° 2'

The Sun and Venus form a mild dissonance in your natal chart. There is nothing very serious to worry about. There is only a small gap between what you really want on the one hand, and your natural need to charm and the warmth you display on the other hand. Thus, will and affectivity are slightly out of phase, but it is most likely that you are the only one who feels it. This is a quite trivial characteristic, and you probably do not have to correct it, since it is so mild.

The Way You Take Action and Your Sexuality

No one can say that you are particularly aggressive, Lily-Rose Depp! Actually, it takes a great deal for you to become able to express your anger because you belong to the wavering type and you are not prone

to risk-taking; you loathe violence and you would rather not intervene than start a conflict. Moderation and the happy medium in all things are your favourites. One of the only areas that makes you wage war is injustice, whether you are the one who is stricken or whether it is someone who is helpless. In this particular field, as in that of sexuality, you are not impulsive and you appreciate it very much when your partner shows the way, preferably with much serenity and gentleness. Actually, the form and characteristics of your sexuality depend on the rest of your personality.

It is in the area of friendship and collective life (common projects, associations, etc.) that you express your impulsivity, your warmth, and your capacity for action, Lily-Rose Depp.

You are cut-and-dried and your motto is "either succeed or die". In case of success, it is your responsibility to make the relationship last because you are not the submissive type and you hardly compromise. You put a lot of passion in your friendly relationships. You are not interested in lukewarm or insipid acquaintances. Things must be moving, even though it may mean that the relationship is cut short.

In any case, you enjoy participating actively within a community and, whenever possible, you take the leadership role, in your own way. As soon as you are more or less under the public eye, you become enterprising. When you are on your own, you do not feel the need to use your energy.

★★★★★ Mars opposite Jupiter, orb -0° 42'

You mobilize your energy as soon as there is an opportunity to turn your chances into concrete reality. You assert yourself in a spectacular and demonstrative manner as soon as an assembly gathers and there is a chance for success. However, too much haste and zeal may harm your projects and spoil your expected outcome. The danger with this aspect is your overzealousness as you strive to achieve your objectives and your ambitions, forcing your way through events, whereas the situation requires diplomacy and patience. Too much fieriness may make you miss your target. With this planetary configuration, it is important that you keep in mind that some circumstances need to be handled with precision and clear-sightedness. Not all opportunities are necessarily good. It would be a pity to lose your efficiency through excesses of opportunism or of enthusiasm.

★★★★★ Mars semi-square Pluto, orb -0° 36'

There is a limit to your respect for laws and norms! Morals, conventions, social marks are of little value to you. With a touch of anarchy in the soul, you disregard conventions and you experience a sort of personal revolution. You prefer unconventional actions to dull conformism. To express your differences, you use a wide scope of possibilities that ranges from brewing revolt to ideological renunciation. Sometimes, you dismiss concrete facts that are nevertheless unavoidable. Hence, you undergo delusions and backlashes. You may also act rashly, to the detriment of your ideals. It is important that you control your actions and that you balance the respect for constraints with your personal demands and inner motivations.

★★★★★ Mars trine Uranus, orb -8° 02'

This harmonious Mars-Uranus aspect indicates an unshakable determination and the will to further your ideas through drastic, sudden, sometimes dramatic actions. You bend the string of your bow before taking action and you hit at the right time. The secret of your feats? An excellent command of your blitz actions. You concoct your plans in the dark, and then you move to an efficient and quick execution step that is often dazzling. You do not have the temperament of a loser. When you face an ordeal, you focus your entire energy and will on your unique aim: victory over any obstacle. This planetary configuration

may lead to dangerous, even heroic actions. The danger is that you may over-estimate your strength or your chances for success.

Your Intellect and Your Communication Style

Lily-Rose Depp, an enquiring intelligence, an instant understanding and a wide range of interests prompt you to go towards other people in all circumstances with a view to exchanging ideas and to show your talent for repartee. Ideas and actions must be quick and you are likely to be impatient, even critical and sarcastic with people who cannot match your frantic rhythm. You are very adaptable, you can do several different things at the same time and also think of a future action because you constantly need to be on the move. You may be criticized for your superficiality, for spreading yourself too thin and for your propensity to conceal the truth, but you always get out of tricky situations incredibly well because you are very astute, shrewd and charming.

Communication is your forte, Lily-Rose Depp: you will use your entire intelligence efficiently in order to achieve agreements, compromises, or contracts. You are a born negotiator, or at least, that's what you try to be because you are not mentally self-centred and your thoughts are more aimed at others rather than at yourself.

With this thinking process, you may be dependent on others and somehow too adaptable... Flexible, chatty, and outgoing when you communicate, you lose in charisma and in convincing power what you gain in quick, efficient, but sometimes light, compromise. Matters related to marriage are sometimes dealt with thoughtlessly but cleverly.

★★★★★ Mercury opposite Pluto, orb -0° 42'

Forget simplicity! You definitely enjoy acting behind the scenes and dealing with what is going on underneath. You play games and you operate in the dark. You leave the front of the stage to others and to the gullible ones. You don't display much sociability. When you are nice, it is because you are looking for flaws. This Mercury-Pluto dissonance mingles unconscious fantasies with reality. When it is kept under control, this aspect becomes an unparalleled source of discernment. To that aim, you must overcome your strong tendency for provocations. It is certainly amusing to play destabilizing games but it may also be dangerous. Keep this treatment for your opponents only.

★★★★☆ Sun conjunction Mercury, orb 2° 28'

You know how to play with your image, how to give multiple representations of yourself. A precious asset: you are sensitive to other people's opinion and you adapt yourself to the audience. Of course, there is a "show" side in your manner that may prevent perfect cohesion. But that's the other side of the coin, for an extraordinary capacity to discover. This aspect translates into an acute sense of observation, an intense desire to learn and to bring everything to light. You strive to be informed in many circumstances, to understand the machinery of the world surrounding you, particularly regarding all human topics. And you will change according to that information and the knowledge gained. You have the chameleon's adaptation powers. And its vulnerability, as well.

★★★☆☆ Mercury trine Neptune, orb 4° 15'

Your sense of psychology and of human intimate mechanisms is acutely developed. Your relations are nuanced, clever and guided by a good intuition of individuals. Without effort, you pick up what is at

stake in relationships and in contacts. Your « sixth sense » inspires you and may take you into strange roads. On the relations' plane, there is an indisputable subtlety. You know what you should not say or, on the contrary, you naturally find the suitable words. Your natural and non-rational attitudes often prove right. The unknown fascinates you... Your curiosity for occultism and mystery is keen. Besides, life is a huge human enigma for you.

★★★★★ Moon inconjunction Mercury, orb 0° 06'

The Moon suggests relaxation, whereas Mercury implies a discoverer's mind. They both make sense and each one requires special attention, as they are sometimes upsetting. This Moon-Mercury aspect is likely to bring about nervousness or instability. Nervousness stems from the multiplication of your spots of interest and the perpetual restlessness of your mind, which prevents relaxation and well being from settling in. The outside world constantly appeals to your attention and you shift from one issue to another, to the detriment of your tranquillity. Therefore, it is important that you find the balance between two antinomial attitudes: letting-go versus curiosity, tranquillity versus communication. The new persons you meet with are not necessarily trustworthy and there is no certainty that the contact is harmonious. It is important that you use both influences alternately.

★★★★★ Mercury semi-square Jupiter, orb -0° 36'

You play with social norms and you scoff at them. Your morality is seldom questioned: you adopt the most rewarding behaviour, precisely the one that wins you your entourage's consideration. But you sometimes cheat. You are an opportunist and you act according to circumstances, particularly because your moral stand is only a superficial mask. You enjoy concealing your beliefs: life is a social game and you change its rules to suit your convenience. Your flexibility and your adaptation abilities are appreciated. However, it is important that you do not behave inconsistently. A stable and transparent course of conduct may help you avoid many pitfalls or delusions. Beware of words spoken thoughtlessly, of empty promises, and do stick to your indisputable cleverness.

★★★★★ Mercury sesqui-quadrate Mars, orb 1° 19'

This Mercury-Mars dissonance brings about impulsiveness into relationships and contacts. Your sense of controversy and criticism leads to blunders and thoughtless actions. Your verbal violence may harm the efficiency of your actions. You certainly display your views without circumlocution. Your straightforwardness would be commendable if it did not cause those blunders that spoil many situations. It is important that you learn to control your decisions, to coordinate your mental abilities and your fieriness, so as to fully express the quickness of your mind and of your action. Learn to count to ten before you say anything, as it is an excellent exercise for you!

★★★★★ Mercury trine Uranus, orb -8° 16'

Your state of mind is innovative and turns the surrounding world into a constantly moving field of experiences. You ask relevant questions ... and you answer them. Although you are flexible when you ought to, your principles and your beliefs are unwavering. It seems difficult to catch you off your guard. You multiply observations, relationships, contacts and you never lose face: actually, your mobility hides an unshakable determination and a deep lucidity. In a split second, you are able to catch the useful information or the enriching relationship. The original and fanciful steps you take exclude monotony. Your approach to life is amazing!

Your Goals, Motivations, Career, and Destiny

Your Sun is posited in the 7th House

To assert yourself, Lily-Rose Depp, you cannot rest until you multiply your contacts. Although you do not consciously understand your ambition early in life, you need to shine through your relationships.

It may take the form of a tendency to rapidly get involved in associations, groups or clubs; you feel fine as soon as people are around you because your communication skills are always highlighted and appreciated; your style is not what matters most because your main concern is to be noticed as soon as you are in contact with the world.

You are meant for marriage, the ultimate form of association. Usually, your destiny is dependent on your marriage, either directly through its consequences on your career and your lifestyle, or indirectly and, in the long run, through the supports and help you may gain, particularly owing to your honesty and your assertive skills. Marriage constitutes the apotheosis of your ambitions. As you unconsciously understand it, your entire will strives to achieve this aim since your adolescence. You have the required flexibility and talent to turn the life of your couple into daily harmony.

This area is only one of the facets of the fields where you positively exercise your will but... you do so with so much strength and talent!

With this configuration, everything seems all roses. However, it is not as simple and easy as it may look: your will to shine through others and your almost frantic search for contact may hide a fear of solitude and a lack of self-confidence. Why would you constantly seek confirmation of your own worth into other people's eyes if it were not to dispel your own doubts?

You are easily influenced and your apprehension about loneliness and not being up to it may cause troubles and out-of-proportion reactions; struggles, conflicts of authority or even lawsuits may be harmful. You often get over them because your determination to show that you are at your best is stronger than anything else.

Your challenge is to manage to please others and to conceal your domineering and too assertive side: however, do not make too much effort because, in all cases, you will be equally appreciated. Remember that it's better to let well alone!

The ruler of your chart is in the 1st House

The ruler of the Ascendant, also referred to as the chart ruler as explained in a previous chapter, is also posited in one of the twelve Houses of the chart. Just like the Sun in his House, the ruler of the Ascendant provides certain abilities, or it makes you appreciate more keenly certain areas of life.

The ruler of your chart is in the 1st House, Lily-Rose Depp. It strengthens your self-confidence and enhances your charisma as well as your magnetism. You do not shirk from taking personal decisions, and you forge ahead fearlessly. This configuration provides strength rather than interest in a specific field.

Aspects influencing your ambitions

Regarding your destiny or your career, the following aspects of your natal chart allow to fine-tune what has just been said above:

★★★★☆ Sun opposite Pluto, orb -3° 11'

You are dealing with both sides of the coin. People are mistaken when they think that they know you well, because the image you project does not necessarily depict what you really are. You may look like any given model, whereas you actually consider social values to be empty and childish. Deep down, you are an anti-establishment person and you do not belong to the world and its laws. Or, on the contrary, you may project a more marginalized image and make it a point of honour to literally stick to your aspirations' ethics. You do not know who you are really, and where you stand. You may choose some sort of marginality, the adherence to another realm and a different scale of values. Unless you choose a life that apparently lives up to the expectations of others. In that case, you preserve a corner for your private secrets, with no norms, no fashion concerns, relationships off the beaten tracks, passions very removed from conventions. Your attitudes may seem paradoxical as you shift from commitment to refusal and from involvement to withdrawal.

★★★★☆ Saturn trine Midheaven, orb 1° 26'

Thanks to this soft aspect between Saturn and your Midheaven, your long-term efforts and your perseverance are rewarded, and you gradually climb up the stairs of success. Time is your ally as far as your career and social destiny are concerned. Carry on the good work, and rest assured that your seriousness and your obstinacy are appreciated. They are instrumental in your success, especially during the second part of your life.

★★★★☆ Sun trine Neptune, orb 1° 46'

This harmonious Sun-Neptune aspect indicates a highly developed intuition and clear-sightedness and sometimes, a sixth sense. Mental images or information drawn from the unconsciousness impress your mind. What was only a muddled feeling turns into certainty and deep conviction. You do not necessarily need to justify your attitudes: you take a decision because you feel that you have to do so, although you may not control the underlying logics. The danger is that you may follow fanciful or adventurous roads. Beliefs you cannot explain may prove wrong or over-optimistic. However, your intuition is seldom misleading. One last comment: there is often a keen curiosity for the « bizarre » and the paranormal with this planetary aspect.

★★★★☆ Pluto square Midheaven, orb -2° 45'

Owing to this dissonance of Pluto with your Midheaven, Lily-Rose Depp, you may experience brutal changes in your professional or your living conditions. These upheavals are imposed on you by fate, and they sometimes take on a mysterious nature. Although you do not always understand the cause behind them, you must accept these changes as they occur, in order to bounce back in a different path, or just elsewhere.

★★★★☆ Mercury square Midheaven, orb 3° 28'

You are not pleased with the way you intellectually approach your professional goals, or simply your destiny. Because of this mild dissonance between Mercury and your Midheaven, in some circumstances, your communication style is tainted with a few hesitations or clumsinesses. There is nothing serious to worry about, and it is up to you to gradually build self-confidence through the study and mastering of your projects.

★★★★★ Moon sextile Midheaven, orb -3° 22'

Your sensitivity and your emotions are in line with your goal and your ambitions, Lily-Rose Depp. You do not need to curb your temper lest other people have a wrong perception of you. Indeed, by being your true self, very simply, your social ascent will unfold naturally.

★★★★★ Sun square Midheaven, orb 5° 57'

What you really want to do, or the way you consider everything, may be in contradiction with your professional goals, Lily-Rose Depp. You may experience conflicts of authority, or a few hesitations over how to manage your career. In any case, you must display flexibility and water down your wine if you want to remain on the right track and achieve professional success. It is the only solution to this discrepancy between the Sun and your Midheaven.

Your Assets and Your Part of Joviality

The planet of Greater Fortune in this sign favours self-confidence, Lily-Rose Depp, as well as the capacity to be enthused and to show your warmth. Your most valuable asset is your ability to easily express your fieriness and your ardour for the implementation of your projects. However, the danger is that your self-assurance may become an agent for rebellion or for indiscipline, in which case, it would play out against your interests.

For you, Lily-Rose Depp, nature's present includes pleasant satisfactions in the area of leisure, entertainments, creations and love. Anything with a hint of pleasure is favoured. A marvellous world exempt from constraint and obligation illuminates your life. According to the Tradition, your luck also applies to your communication with children and your descent is harmonious and successful.

The planet Jupiter symbolizes expansion, broadness and generosity. Jupiter is associated with the functions of synthesis, enthusiasm and optimism. In your natal chart, his house position is more important than his sign position because, like Saturn, Uranus, Neptune and Pluto, he is a slow planet. Many people born in the same period have Jupiter in the same sign. This is the reason why the sign occupied here is less meaningful than when it is occupied by the so-called fast planets, i.e. the Sun, the Moon, Mercury, Venus and Mars. Therefore, some caution is to be exercised as you read what follows.

Jupiter in Aries amplifies your tendency to charge ahead and your self-assertiveness. You have leadership qualities, you are optimistic and you can mix the boldness with the will to succeed that are specific to Aries. Management ability, leadership and independence: your enthusiasm is a real asset for your life and for your charm!

Your Serious Side

Material, practical or frivolous matters (comfort etc.) are highlighted. Obstinacy, even stubbornness, and the instinct of possession may get you into trouble. On the other hand, you can learn how to step back and to improve the practical management of your assets.

The association of the astrological house of effort with the planet symbolising concentration and the necessity to overcome one's fears is not negative in itself. In your daily life and in your work, Lily-Rose

Depp, more than anyone else, you are dependent on your courage and your persistence.

The danger is that you underestimate yourself psychologically, or that you give up a task just because you think that you cannot live up to people's expectations. Your challenge is to gain self-confidence and wisdom and to pursue your effort because in the long run, they will be rewarded.

The planet Saturn symbolizes contraction, effort, time, limitation and concentration. Saturn eliminates anything that is not authentic, sooner or later. It is impossible to cheat him as he gives an irresistible desire to form a coherent whole with oneself, in responsible and wise ways. He is the great purifier. He represents our limitations but also our truth. In your natal chart, the house position where Saturn is posited is more important than his sign position because, like Jupiter, Uranus, Neptune and Pluto, he is a slow planet. Many people born in the same period have Saturn in the same sign. This is the reason why the sign occupied here is less meaningful than when it is occupied by the so-called fast planets, i.e. the Sun, the Moon, Mercury, Venus and Mars. Therefore, some caution is to be exercised as you read what follows.

Saturn in Taurus decreases your appetite for material things but he endows you with more caution and wisdom in the financial area in general. He also gives you a more obstinate and deeper nature.

A Few Special Points

Your Uniqueness and Your Utopias

Your mind is agile, curious and mobile, and always on the lookout for things that are out of the ordinary. This stems from your interest in strange or original concepts, or in non-conformist people.

Your trips are unforeseen and you are often present where no one expects you. The only problem is that you may shock your entourage, at least, the most conventional persons, because this aspect of your personality is undoubtedly quite endearing, provided that you do not exceed a certain level of eccentricity, whether in intensity or in volume!

Your Inspiration and Your Illusions

The way you think and communicate, as well as the organization of your trips, are deeply emotional and sensitive and lack rigour. On the other hand, you are able to "sense" things directly. Your mind gains in synthesizing ability what it loses in analysis capacity.

You have bohemian ideas, and the way you look at things is quite flexible. As you daydream and you indulge in your emotions, you may be cut off from reality and may lose important relationships! Do not run away, do not tell lies, and take advantage of the best aspects of this configuration: intuition and inspiration.

Your Passion and Your Authority

Your close friends are aware that your underlying tension may break open as soon as you feel threatened or when your honour is tarnished by ambiguous actions or talks. You have an innate taste for power, and you exude a strong form of magnetism and authority.

Your need to transform both your environment and your personality may prompt you to display aggressiveness. But more often than not, it remains a form of blackmail in order to dominate others, something similar to the chess principle that “threat is better than implementation”.

Your Isolated Planets

In general, the ten planets of the chart are connected to other planets by major or minor astrological aspects. It is owing to those ties that the planets' energies can manifest in the chart owner's personality and play out within safeguards according to a specific tonality.

It seldom happens that in a natal chart, a planet is totally disconnected from the nine other planets.

Astrologers have observed that when such a case occurs, the person feels the energy of the unaspected planet in quite a singular way, very jerky and powerful at the same time. Thus, for instance, the famed astrologer Jean-Baptiste Morin de Villefranche wrote that "an unaspected planet heralds that something strange or extraordinary will take place regarding the meanings of the house in which the said planet is posited" (source : l'astrologie selon Morin).

Rules for detecting an unaspected planet: among all the testimonies that we have reviewed to this day, based on our experience, we tend to agree with American astrologer Janis Huntley who accepts seven aspects, which involve the zodiacal twelve sections of 30 degrees. The aspects to be considered are the conjunction (0 degree, cooperation or tension), the semi-sextile (30 degrees), the sextile and the trine (60 and 120 degrees respectively, aspects of cooperation), the square and the opposition (90 and 180 degrees respectively, tensed aspects), and the quincunx (150 degrees, slightly tensed). In this detection, the chart's angles are not taken into account.

In any case, it is important to remember that an isolated planet clearly expresses its influence when it is a personal planet. Thus, when the Sun, the Moon, Mercury, Venus, or Mars is isolated, it is certain that the effects described by Jean-Baptiste Morin de Villefranche will become manifest. As for Jupiter, Saturn, Uranus, Neptune, and Pluto, one must be cautious because the volume of cases documented is not yet large enough.

Your chart has no isolated planet, and this particular case does not apply to you.

Annex 1: Your Minor Dominants

The five following dominants are less significant than those described at the beginning of your report. They may not be strongly felt. In some cases, they add several minor details to the analysis of your character, but they are rather for curiosity purposes. It is not necessary to take them into account when you first read your portrait.

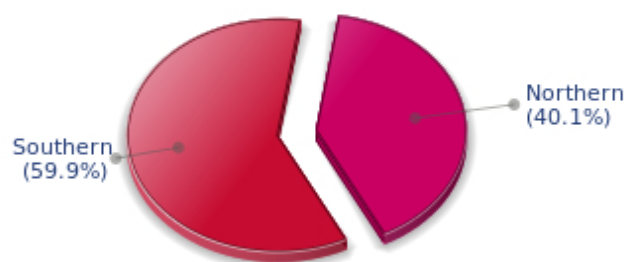
Your Planetary Repartitions: Northern, Southern, Eastern and Western Hemispheres

The axis linking the 1st house's cuspid (the Ascendant) to the 7th house's cuspid - the Descendant - divides the zodiac into two bowls, a superior bowl, in the South, and an inferior bowl in the North. Quoting an expression by the famous American astrologer Rudhyar, the Southern part and the Northern part correspond to two functions: "being" and "doing". Other concepts are also associated with this North and South distribution, such as introversion - Northern hemisphere - and extraversion - Southern hemisphere - being or appearances, inner life or external life, reflection or action, dreaming one's life or living one's dreams, the abstract or the concrete, backstage or limelight.

This is not about determination but about personal inclination: thus, some people will be thrown into public life despite a prominent Northern hemisphere. If this happens, however, it will not be due to their will, their taste or their deep nature. Conversely, a prominent Southern hemisphere will not bring about a famous destiny to its owner, even if he tends to turn the spotlight on himself, or if he looks for a more active life. It is a matter of deep nature and natural inclination. Of course, none of the typologies is "superior" to another.

In your birth chart, Lily-Rose Depp, the ten main planets are distributed as follows:

Your Northern and Southern Hemispheres



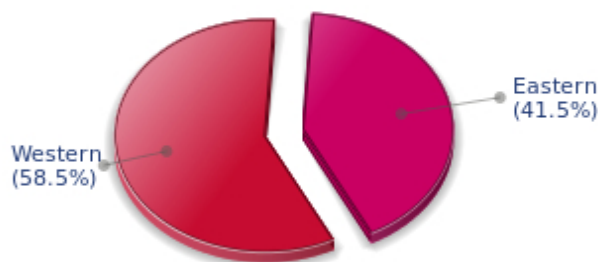
Lily-Rose Depp, the planetary elements of your chart are well balanced between the North and South hemispheres. As a result, your public destiny and your inner life are harmonious, and there is no conflict between your actions and your thoughts. Your private and public spheres coexist in harmony and naturally match your temperament.

The birth chart is divided into two other parts, Eastern and Western, by the axis linking the Midheaven to the Imum Coeli.

The Eastern part, on the Ascendant side, shows the person's ego, will, magnetism, and vitality, whereas the Western part, on the Descendant side, symbolizes other people, communication, relationships and their influence, as well as flexibility and adaptability.

Lily-Rose Depp, here is the planetary repartition in your Eastern and your Western hemispheres:

Your Eastern and Western Hemisphere:



Lily-Rose Depp, the East and West sides are well balanced in your chart. This means that you are not too determined or authoritarian, and that you are neither impressionable nor fragile. You are capable of taking decisions, in full awareness, without anyone's help when circumstances so require. However, you have no problem taking your entourage's viewpoints into consideration, with tact and intelligence.

Your Yin and Yang Polarity

The twelve signs are divided into two polarities, called active or passive, or sometimes masculine and feminine, positive and negative, Yang and Yin. This classification corresponds to two quite distinct tonalities, the first one bringing extraversion, action, self-confidence and dynamism, the second one, introversion, reactivity, reflection and caution. None is superior to the other, each group has its own assets and shortcomings. Odd signs - Aries, Gemini, Leo, Libra, Sagittarius and Aquarius - belong to the first group, whereas even signs - Taurus, Cancer, Virgo, Scorpio, Capricorn and Pisces - belong to the second group.

Your Yin and Yang Polarity



According to the disposition and qualities of your planets and angles, you are rather influenced by Yang energy, the active polarity, Lily-Rose Depp: more concerned about actions than reflection, you sometimes rush without standing back and without the deepness that is needed. However, your spontaneity prompts you to take fresh starts, even after repeated failures caused by your rashness.

Your Houses' Accentuations

Houses are split up into three groups: angular, succedent and cadent.

The first ones are the most important ones, the most "noticeable" and energetic houses. They are the 1st, 4th, 7th and 10th houses. Their cuspides correspond to four famous angles: Ascendant for the 1st house, Imum Coeli for the 4th house, Descendant, opposite the Ascendant, for the 7th house and Midheaven for the 10th house, opposite the Imum Coeli.

Planets are evaluated according to a whole set of criteria that includes comprehensive Western astrology rules. At their turn, planets emphasize specific types of houses, signs, repartitions etc., as previously explained.

Your Houses' Accentuations



Your angular houses, namely, the 1st, 4th, 7th and 10th houses, are very emphasized in your chart,

Lily-Rose Depp: according to the Tradition, they are the strongest and most dynamic houses. Should the rest of your chart concur, angular houses suggest that you are an enterprising, energetic and assertive woman. Indeed, angular houses are said to generate impulsions and to give a powerful and domineering personality.

Unusual fates are often linked to a predominance of angular houses, but this is only a partial indication...

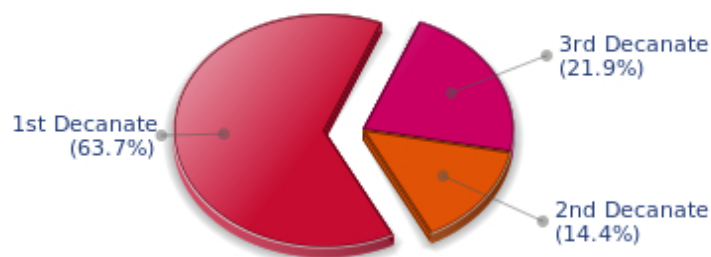
Your Esoteric Decanates

Each sign contains 30 degrees and can be divided into three equal parts: the decanates. The Tradition indicates that specific meanings can be associated to each of the three decanates. Their sphere of activity is usually limited to the Sun sign, however, it is even more interesting to observe the distribution of all the planets in the chart to get an idea of the respective importance of the three decanates, which can complement the description of the personality.

These meanings must be considered with the greatest caution. Indeed, they are minor characteristics that can only underline other outstanding traits of character.

Traditionally, the first decanate highlights the characteristics of the sign where a planet is located. The two other decanates correspond to sub-dominant planets, depending on the nature of each sign. This system leads to a multiplication of meanings and it is impossible to have a clear understanding: here, we prefer to give only the meaning of one decanate in comparison with the other two, within the birth chart as a whole. Again, the greatest caution is needed with regard to this minor indication as it is not always reliable: it is not essential that you read these texts in the beginning. You can get back to them later on, once you have read more important interpretations

Your Esoteric Decanates



The first decanate, which means the part between 0° and 10° of any zodiacal sign, prevails in your natal chart, Lily-Rose Depp: this decanate is traditionally linked to vitality and physical constitution, and may indicate that you efficiently express your concrete energy on the material and sensual planes.

Annex 2: Karmic Study

The karmic theme is a good complement to the psychological portrait, or natal chart. This analysis is based on the positions of the Lunar Nodes, the Black Moon and the Part of Fortune: they are also called fictitious points and describe the spiritual purpose of your destiny. Because there is in all of us an experience and a quest, our life is an evolutionary journey... provided that we head towards the right direction, of course! Indian astrologers highly prize the Nodes axis (North Node and South Node). It is the Ariadne's thread that we are invited to follow. The Black Moon indicates the sector where we are most likely to transform or to transcend, whereas the Part of Fortune points out the area where we can easily express our specificity.

The Lunar Nodes: a spiritual path

Lunar Nodes have their roots in the Indian tradition and they are based on a simple concept: each of us have a mission of their own, here on earth, a destiny, a course. According to the Indian philosophy, life is a school: the nodal axis describes our past experiences (South Node, our karma, our spiritual inheritance or our previous lives), and our aims on earth (North Node, our Dharma, the purpose of our current incarnation). This is the reason why the study of the lunar nodes is called "Karmic astrology". Here, we shall not step into hypothetical past lives. Wherever our current trends may come from, all that really matters is that we become aware of the purpose of our life, its finality and our dharma. We are likely to understand our life purpose around the age of 37, when the Lunar Nodes return to their natal position.

You make friends easily and you earn your entourage's confidence and esteem. Very early, you develop an acute sense of fraternal relations, generously receiving and giving. This spirit of mutual aid may lead to a happy-go-lucky attitude that may border on carelessness... As you rely too heavily on friendship, there may be a danger to undergo a few setbacks: idealism and spontaneous dedication may meet with ungrateful reactions or the indifference of the very persons whom you try to help. Your destiny is probably marked with a quest of individual achievement. It is of utmost importance that you create, that you beget a fruit, a work or a child. Little by little, you become independent, without selfishness, but with the strength of those who know that they can only rely on themselves. Do not hesitate to live your dreams to the end and to engender, over and over again. Creation, whatever its form, is the path to your fulfilment. You slowly discover the pleasure to design as you please, without outside interference. It is important that you find an area for your personal expression and, as the poet says, "before the eyes, constantly, night and day, either a great labour or a great love".

Your destiny hinges on spiritual values. Early in life, you developed relationship abilities and you showed a healthy curious mind. You are insatiable when it comes to exchanging new concepts but you limit your horizon line to tangible and useful facts. As time goes by, you feel the desire to leap further and to discover new territories or different philosophies. You may have a growing interest in metaphysics or in religions, or you may travel, so as to keep up with your desire for evolution. Never mind! What is essential is that you never stagnate and that the vagaries of life do not take precedence over your thinking process or your spiritual growth. You dream of getting rid of everyday constraints and of reaching another dimension of life pertaining to large spaces and to ideals. You need to live intensely, to discover again and again. You long for a better world? The danger is that you may get trapped in illusions and utopias. But life would be so dull without an ideal!

Lilith or the Dark Moon

The Black Moon is the spark of refusal and distance that is dormant in all of us. Depending on the sign where she is found in your chart, she highlights the desire to transform and to sublimate a part of your life. The Black Moon is unfathomable and mysterious. She gives a different dimension to the sector she touches. Her manifestations are subtle; nonetheless, she is powerful, implacable, demanding to the extreme... The Black Moon is also called Lilith. She is the inner flame of your heroism and insubordination.

This configuration predisposes to the quest of the absolute on two accounts: firstly, the very nature of the Black Moon, implacable and extremist, and secondly, she is in a sector of the Zodiac that is traditionally evolutional but extremist. Here, you flirt with death, danger and challenge. Everything suggests transformation, abandonment and revival, passion and cruelty. There is no half-measure in your behaviour, only a terrifying and marvellous thirst for the absolute... That'll take some doing for the person who will experience it with required intensity!

Your refusals are irrevocable: you may show violence when the situation is stuck... When facts hamper your aspirations, when everything does not seem to start moving soon, you tend to force your ways through events, regardless of the price to be paid. Your strengths and your weaknesses stem from all that: you may exercise a misplaced extremism, claiming great causes, whereas order can be restored in the simplest of ways. However, better than anyone else, you know how to maintain the pressure whenever it is needed, when the desire for deep changes takes precedence over submission or abdication.

The Part of Fortune in House

The Part of Fortune is a very ancient fictitious point that depends on the lunar phase at the time of birth. The astrological house tenanted is particularly strengthened. In your chart, the Part of Fortune is in the 5th house: to you, success means to create, to produce a fruit or a work, or to give birth to a child. Being in this world does not content you; you need "to do", to design, to live hand-to-hand with your surroundings. You are sensitive to power and you want to arouse esteem and admiration in your entourage.

Retrograde Planets

The karmic tradition insists on the issues related to the so-called retrograde planets. They are considered to be the inheritance of a past that was not well experienced, a sort of unfinished business. The interpretations of the retrogradation may seem negative or excessive to you. However, you may relate to a scenario that you have often and repeatedly experienced... as if you underwent several setbacks that all have the same cause. Until the day you become aware of it and you can free yourself from it! Through the slow integration of these planetary energies, you will be able to overcome your difficulties and to pay your karmic debt. Actually, each retrograde planet highlights an opportunity for evolution. Nothing can be achieved without the will to grow spiritually and to defeat your own demons.

Mars is retrograding in your chart: according to the Tradition, this suggests karma of aggressiveness. What does it exactly mean? You may not control your energy, at least during the first part of life. In your interactions with the world, you may not dare to give your reactions free rein. During your childhood, as for all bullied persons, your spontaneousness was smothered. You tend to internalize, even to repress your desires. You chew things over and you fuel your resentments without taking any action... until they

explode! Then, your aggressiveness suddenly blows up in an excessive and out—of-proportion way. In itself, martial energy is positive: it allows coping with any given situation. However, the fighting spirit is a virtue only when impulses remain under control. You must endeavour to balance your quarrelsome tendencies and to respond to provocations without losing your self-control. Do you lack audacity? In that case, force your natural self, be more dynamic, otherwise you may undergo the same harmful outbursts again. It is the only way for you to feel better in your body and in the world!

Uranus was retrograding on the day of your birth: you have the soul of a rebel and your behaviour may often be tyrannical or extremist. Your manner has brought you setbacks. You lack the flexibility that spares you the pain of forcing your ways through events. The danger may be that you get trapped into rigid patterns and into personal logics incompatible with others'. This is precisely what your life's lesson is about: as years go by, your judgments are more qualified and your attitudes become less cut-and-dried, less stubborn. You must lose the essentially individualistic character of your childhood and be more open to other people's ideas and problems. In other words, a path of love. Without losing your remarkable resolution, you must practice some form of renunciation and be sensitive to various logics that constitute the wealth of your social life.

Neptune retrograding concerns spirituality. You may have expressed early in life a few reluctances about the subtle world of faith. You may have ignored destiny's signs and winks and you preferred to stick to your certainties, to a rigorous and objective control of your life. You dread your own aspirations and you readily trust others': this causes a lack of autonomy and the feeling that you may not receive as much as you give. However, several delusions teach you that you must relativize your calculating and methodical attitude and open up to the irrationality of love in order to find an inner and more spiritual progression. Embracing the invisible is a process that unfolds as years and experiences go by. Your own generosity increases as you become aware of your entourage's generosity.

Pluto retrograde suggests power issues and mishandled relations: for you, everything comes down to power struggles, submission and domination, Machiavellian manoeuvres, including within your couple... The results are complex behaviours and an obsession for the power to influence people. Yet, life teaches that you must simplify your relations and adopt more transparent attitudes and healthier desires... As years go by, you will tend towards more simplicity and you will slowly discover that human energy can, and must, be at the service of the good, or of well being, in compliance with our individual progression.

N.B: modern astrology attaches less and less importance to the principles of retrograding planets.

Conclusion

A few remarks are needed here in order to allow you to fully take advantage of your astrological portrait: firstly, do not forget that a birth chart is also a photograph of the sky at birth and a structure that not only contains the personality's characteristics, but also its potential evolution.

We all know that, in real life, people begin to know themselves when they are in their forties, or even later. Likewise, several traits of character in a portrait may seem surprising: in most cases, it means that such features are not yet developed.

Some personalities reveal themselves late in life, whereas others are more precocious. It must be remembered that psychological structures are in a state of continuous evolution because they are influenced by unfolding events and gradual maturity. We can never underline strongly enough the "mobile" nature of the personality, throughout a lifetime.

On the other hand, it is difficult to discriminate what is "already present" at this moment in your life when you are reading your chart's interpretation, from what will appear later in the logic of your evolution: you must sort out all the pieces of information provided and, in most cases, you will see that your astrological portrait is helpful for your endeavours to know yourself better.

Finally, several readings of an astrological portrait are usually necessary in order to absorb all its different meanings and to evaluate the relevance of each character trait.

In any case, better self-knowledge obviously contributes to faster personal blossoming, and it is undoubtedly one of astrology's major roles: contributing to know oneself better, in order to improve more rapidly, to deal with one's weaknesses and to avoid its drawbacks, and to take advantage of one's assets as efficiently as possible.
