



Léon Marchand's Astrological Portrait





Léon Marchand's Astrological Portrait



Introduction	2
Your Planets, Houses, Aspects, and Natal Chart	4
Preamble	7
Your Planetary Repartitions	8
Your Dominant Modes and Elements	9
Your Dominants: Planets, Signs and Houses	10
Your Style, Behaviour, and Peculiarities	14
Your Sensitivity	18
Your Affectivity	19
The Way You Take Action and Your Sexuality	21
Your Intellect and Your Communication Style	22
Your Goals, Motivations, Career, and Destiny	23
Your Assets and Your Part of Joviality	26
Your Serious Side	26
A Few Special Points	27
Your Isolated Planets	28
Annex 1: Your Minor Dominants	29
Annex 2: Karmic Study	33
Conclusion	36





Léon Marchand's Astrological Portrait

Introduction

To fully benefit from this portrait, we suggest that you read its introduction and its preamble carefully, and then that to take the time to soak up the interpretations of each chapter. Given the large number of texts, which mirrors the human being's complexity, you may need to go through the contents several times, so as to get a good grasp of their meaning and to know yourself better. This will reward your patience.

The purpose of this report is to describe your psychological portrait and to highlight the most fundamental features on the personal area. The report begins with the analysis of your planetary dominants and outlines your personality's general traits before going into further detail. Minor dominants are analysed at the end of Annex 1, for purposes of clarity. Your report then delineates the various facets of your personality:

In general, even when relationships are not involved, we express ourselves and we feel according to our character and our personal motivations: this is indicated by the Ascendant and the Sun sign which both give details on the way we function. They shed a tremendously important light which allows to figure out your personality. Here, we describe your Sun sign (your inner self), your Ascendant (your behaviour as seen by others), and the ruler of the Ascendant (interesting additional pieces of information about the style of your personality). These descriptions alone cover nearly a third or a half of your psychological signature, depending on your natal chart characteristics.

Then, we address your sensitivity, or in other words, the way you receive things and how you express your emotions ; it works as a constant filter for all your exchanges, even when it becomes a more secondary element in your amorous relationship, because at that moment, affectivity prevails. Sensitivity is the way you perceive things, it is your radar, your daily mood, and at the same time, it indicates how you react to your entourage, on a daily basis. It is what others immediately see of you. In the second paragraph, we explain in which areas of life your sensitivity and your emotions are strongest, therefore, where you are most vulnerable.

After this, it is your affectivity, the way you love and how you charm, that comes into play as soon as you fall in love: the first part indicates its basic structure or its main form. The second part describes the areas where it is best expressed and how you display it, according to your personality.

A third fundamental area deals with your mode of action and your sexuality: how you behave, how you manage to obtain what you want, what kind of desires you have. There are twelve possibilities, very

different from one another. The study discloses the specific one that applies to you. In the second paragraph, we explain in which life areas you may most efficiently take advantage of your capacity for action and for conquest.

Your ways of communicating and of thinking are obviously among the major elements that must be integrated into the delineation and the description of your personality. Indeed, they influence your general behaviour and may modify or enhance the image your project (for instance, extraversion may “compensate” a weak affectivity, but a huge number of cases are possible). An additional chapter indicates the favourite areas where you enjoy communicating, thinking and meeting with people.

Besides, we analyze an even more personal aspect that is important to define and understand what may occur within your couple: each of us have a centre of interest, a privileged manner to be fulfilled or to achieve our destiny; this main motivation is indicated by the positions of your Sun and your chart ruler in the astrological houses and we provide you with its detailed description.

A natal chart contains the potential for specific fulfilment and a whole range of assets, protections and qualities. How does the lucky factor manifest in your personality? In which area can you best exploit your qualities? The answers are precisely revealed to you in this chapter.

On the other hand, we all feel in us a part of vulnerability, doubts and fears. How does this part of solemnity or serious side play out? How is it possible to handle it in order to evolve and to get rid of useless elements? All this information is provided to you in these two paragraphs.

Then, you can discover three additional traits of your personality that must be considered as secondary ones. They deal with your predispositions, which means that they need to be triggered by external events because they are not influenced by your will; let's call it a part of fate. Please, bear in mind that your destiny can unfold only in accordance with what you are: therefore, even if they belong to your more unconscious self, these characteristics are parts of you, definitely.

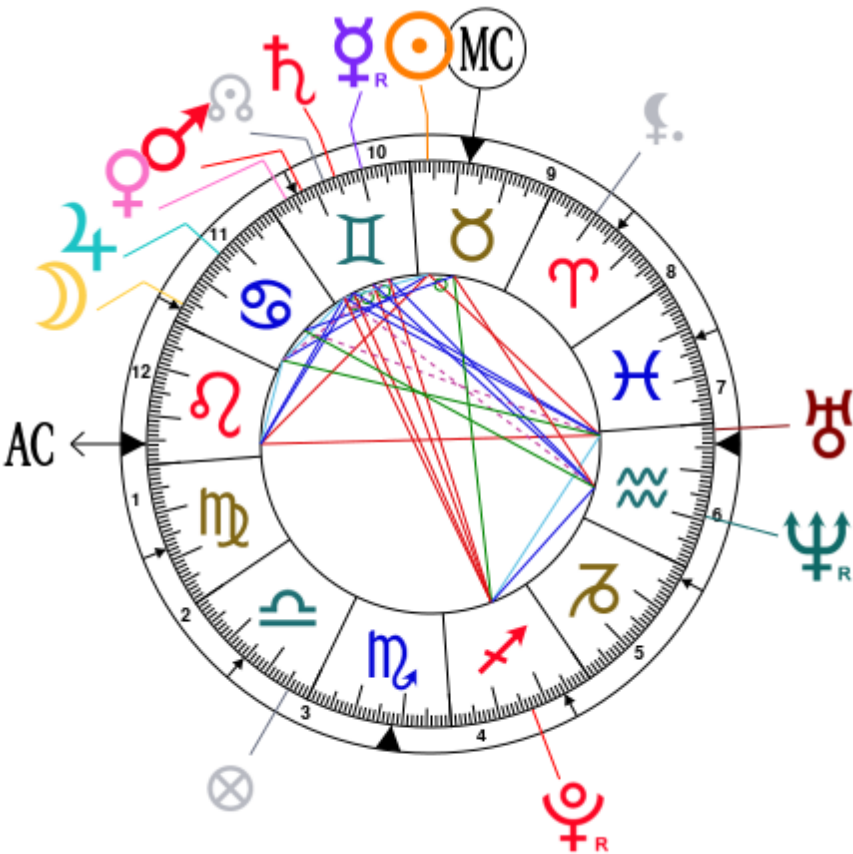
The karmic chart complements the psychological portrait or natal chart. It is based on the positions of the Lunar Nodes, the Black Moon, and the Part of Fortune. These elements of the chart, sometimes referred to as fictitious points, provide information about the spiritual meaning of your destiny. Owing to the fact that we all have in us acquired knowledge and the urge to go on a quest, our life is an evolutionary journey... However, these texts must be read with great caution: this is the reason why you will find this analysis in the Annex 2 of your report.

Your Planets, Houses, Aspects, and Natal Chart

Léon Marchand, born May 17, 2002, at 01:16 PM, Toulouse (Midi-Pyrenees), France [1.26E ; 43.36N ; 2E00]

Natal Planets				In House	Natal Houses (Placidus)	
☉ Sun	26°23'	♉ Taurus		House 10	House 1	25°47' ♌ Leo
☾ Moon	26°17'	♋ Cancer		House 11	House 2	17°33' ♍ Virgo
☿ Mercury	9°52' R	♊ Gemini		House 10	House 3	14°44' ♎ Libra
♀ Venus	26°17'	♊ Gemini		House 11	House 4	17°53' ♏ Scorpio
♂ Mars	22°43'	♊ Gemini		House 10	House 5	24°02' ♐ Sagittarius
♃ Jupiter	13°46'	♋ Cancer		House 11	House 6	27°24' ♑ Capricorn
♄ Saturn	15°30'	♊ Gemini		House 10	House 7	25°47' ♒ Aquarius
♅ Uranus	28°43'	♒ Aquarius		House 7	House 8	17°33' ♓ Pisces
♆ Neptune	10°59' R	♒ Aquarius		House 6	House 9	14°44' ♈ Aries
♇ Pluto	16°49' R	♐ Sagittarius		House 4	House 10	17°53' ♉ Taurus
♊ Node	17°56'	♊ Gemini		House 10	House 11	24°02' ♊ Gemini
♎ Lilith	20°06'	♈ Aries		House 9	House 12	27°24' ♋ Cancer
AS AS	25°47'	♌ Leo				
MC MC	17°53'	♉ Taurus				

In keeping with the common practice, we consider that a planet posited within 1 degree of the next house belongs to that house. We allow an orb of 2 degrees for the ASC and the MC.



List of Your Active Planetary Aspects

Please find below the list of all the active inter-aspects which are interpreted in this report, in addition to your planets in sign, in house, and all your planetary dominants. Since the aspects between slow-moving planets are of a collective nature, they are not displayed, in compliance with our interpretation rules.

- ★★★★★ Sun sextile Moon, orb -0° 05'
- ★★★★★ Sun semi-sextile Venus, orb -0° 05'
- ★★★☆☆ Sun square Uranus, orb -2° 2'
- ★★★☆☆ Sun square Ascendant, orb -0° 35'
- ★★★★★ Sun conjunction Midheaven, orb 8° 29'
- ★★★☆☆ Moon semi-square Mercury, orb 1° 24'
- ★★★★★ Moon semi-sextile Venus, orb 0'
- ★★★☆☆ Moon inconjunction Uranus, orb -2° 26'
- ★★★★★ Moon semi-sextile Ascendant, orb -0° 3'
- ★★★★★ Mercury conjunction Saturn, orb 5° 37'
- ★★★★★ Mercury trine Neptune, orb -1° 06'
- ★★★☆☆ Mercury opposite Pluto, orb -6° 56'
- ★★★★★ Venus conjunction Mars, orb 3° 34'
- ★★★★★ Venus trine Uranus, orb -2° 26'
- ★★★☆☆ Venus sesqui-quadrate Neptune, orb 0° 18'
- ★★★☆☆ Venus opposite Pluto, orb -9° 28'
- ★★★★★ Venus sextile Ascendant, orb -0° 3'
- ★★★★★ Mars conjunction Saturn, orb 7° 12'
- ★★★★★ Mars trine Uranus, orb -6'
- ★★★☆☆ Mars opposite Pluto, orb -5° 53'
- ★★★★★ Mars sextile Ascendant, orb 3° 04'
- ★★★★★ Jupiter sextile Midheaven, orb -4° 06'
- ★★★★★ Uranus opposite Ascendant, orb -2° 56'
- ★★★☆☆ Neptune square Midheaven, orb 6° 54'
- ★★★☆☆ Pluto inconjunction Midheaven, orb 1° 03'

Meaning of Stars

Stars indicate the strength of the aspects. Two solid coloured stars (there are half-stars also), mean that the aspect is powerful enough to be noticed at the first reading.

We strongly advise that you read the paragraphs displaying less than two stars later on, after you have absorbed the full import of the other texts.

The yellow colour indicates a soothing and conciliating aspect, and the red colour, a dynamic and tense aspect. The red aspects enable you to evolve, to take action, and to learn to turn your "weaknesses" into assets through your life experiences. The yellow aspects are innate strengths on which you rely in order

to grow better with the former...

Preamble

When interpreting a natal chart, the best method is to start gradually from general features to specific ones. Thus, there is usually a plan to be followed, from the overall analysis of the chart and its structure, to the description of its different character traits.

In the first part, an overall analysis of the chart enables us to figure out the personality's main features and to emphasize several points that are confirmed or not in the detailed analysis: in any case, those general traits are taken into account. Human personality is an infinitely intricate entity and describing it is a complex task. Claiming to rapidly summarize it is illusory, although it does not mean that it is an impossible challenge. It is essential to read a natal chart several times in order to absorb all its different meanings and to grasp all this complexity. But the exercise is worthwhile.

In brief, a natal chart is composed of ten planets: two luminaries, the Sun and the Moon, three fast-moving or individual planets, Mercury, Venus and Mars, two slow-moving planets, Jupiter and Saturn, and three very slow-moving planets, Uranus, Neptune and Pluto. Additional secondary elements are: the Lunar Nodes, the Dark Moon or Lilith, Chiron and other minor objects. They are all posited on the Zodiac wheel consisting of twelve signs, from Aries to Pisces, and divided into twelve astrological houses.

The first step is to evaluate the importance of each planet. This is what we call identifying the dominant planets. This process obeys rules that depend on the astrologer's sensitivity and experience but it also has precise and steady bases: thus, we can take into account the parameters of a planet's activity (the number of active aspects a planet forms, the importance of each aspect according to its nature and its exactness), angularity parameters; (proximity to the four angles, Ascendant, Midheaven, Descendant and Imum Coeli or Nadir, all of them being evaluated numerically, according to the kind of angle and the planet-angle distance) and quality parameters (rulership, exaltation, exile and fall). Finally, other criteria such as the rulership of the Ascendant and the Midheaven etc. are important.

These different criteria allow a planet to be highlighted and lead to useful conclusions when interpreting the chart.

The overall chart analysis begins with the observation of three sorts of planetary distributions in the chart: Eastern or Western hemisphere, Northern or Southern hemisphere, and quadrants (North-eastern, North-western, South-eastern and South-western). These three distributions give a general tone in terms of introversion and extraversion, willpower, sociability, and behavioural predispositions.

Then, there are three additional distributions: elements (called triplicity since there are three groups of signs for each one) - Fire, Air, Earth and Water - corresponding to a character typology, modality (or quadruplicity with four groups of signs for each one) - Cardinal, Fixed and Mutable - and polarity (Yin and Yang).

There are three types of dominants: dominant planets, dominant signs and dominant houses. The novice thinks astrology means only "to be Aries" or sometimes, for example, "to be Aries Ascendant Virgo". It is actually far more complex. Although the Sun and the Ascendant alone may reveal a large part of the character - approximately a third or a half of your psychological signature, a person is neither "just the Sun" (called the sign) nor just "the first house" (the Ascendant). Thus, a particular planet's influence

may be significantly increased; a particular sign or house may contain a group of planets that will bring nuances and sometimes weaken the role of the Ascendant, of the Sun sign etc.

Lastly, there are two other criteria: accentuations (angular, succedent and cadent) which are a classification of astrological houses and types of decanates that are occupied (each sign is divided into three decanates of ten degrees each). They provide some additional informations.

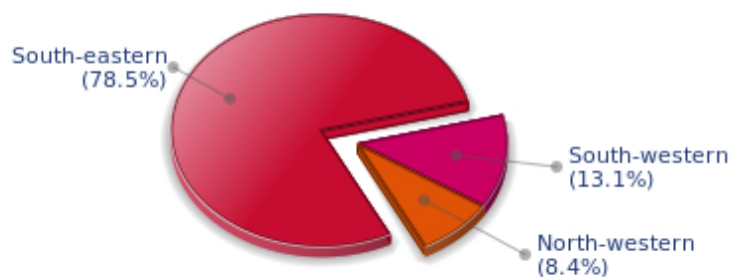
These general character traits must not be taken literally; they are, somehow, preparing for the chart reading. They allow to understand the second part of the analysis, which is more detailed and precise. It focuses on every area of the personality and provides a synthesis of all the above-mentioned parameters according to sound hierarchical rules.

As explained in the introduction of your Psychological Portrait report, minor dominants are analysed at the end of Annex 1, for purposes of clarity.

Your Planetary Repartitions

Each quadrant is a combination of the four hemispheres of your birth chart and relates to a character typology. The Southern hemisphere – the top of your chart, around the Midheaven – is associated with extraversion, action, and public life, whereas the Northern hemisphere prompts to introversion, reflexion, and private life. The Eastern hemisphere – the left part, around the Ascendant – is linked to your ego and your willpower, whereas the Western hemisphere indicates how other people influence you, and how flexible you are when you make a decision.

Your Four Quadrants

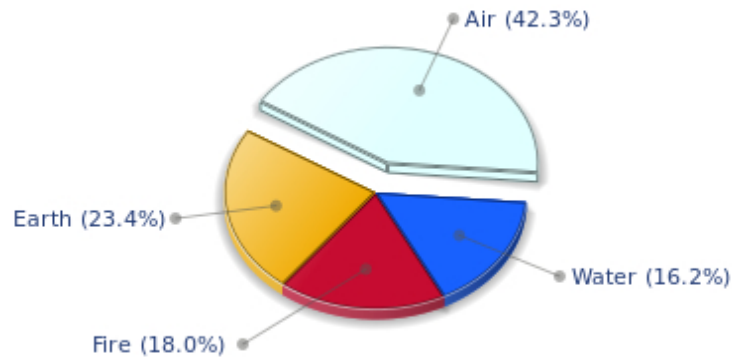


Léon Marchand, the diurnal South-eastern quadrant, consisting of the 10th, 11th and 12th houses, prevails in your chart: assertion and goals achievement are at the centre of your concerns. You are very keen to implement your dreams and your plans. You achieve your ambitions as soon as possible, whether through an active social life, highly charged friendly relations, or an urge to take actions in order to reap - in the eyes of the world, of course - the rewards of your dynamism. It is likely that spirituality or humanitarian actions are part of your motivations, sometimes at the price of some degree of isolation.

Your Dominant Modes and Elements

Léon Marchand, here are the graphs of your Elements and Modes, based on planets' position and angles in the twelve signs:

Your Four Elements

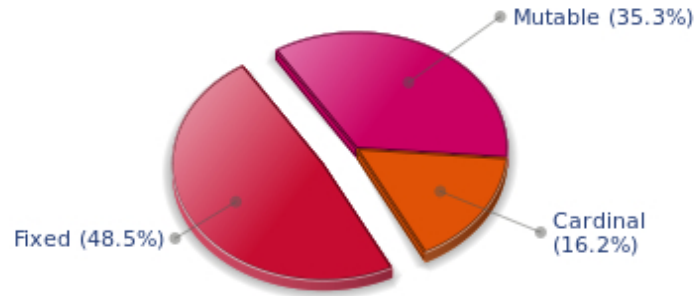


Cheers for communication and mobility, Léon Marchand! The predominance of Air signs in your chart favours and amplifies your taste for relations and for all kinds of short trips, whether real (travels) or symbolic (new ideas, mind speculations). You gain in flexibility and adaptability what you lose in self-assertion or in pragmatism.

Like the majority of Earth signs, Léon Marchand, you are efficient, concrete and not too emotional. What matters to you is what you see: you judge the tree by its fruits. Your ideas keep changing, words disappear, but actions and their consequences are visible and remain. Express your sensitivity, even if it means revealing your vulnerability. Emotions, energy and communication must not be neglected; concrete action is meaningless if it is not justified by your heart, your intellect or your enthusiasm.

The twelve zodiacal signs are split up into three groups or modes, called quadruplicities, a learned word meaning only that these three groups include four signs. The Cardinal, Fixed and Mutable modes are more or less represented in your natal chart, depending on planets' positions and importance, and on angles in the twelve signs.

Your Modes



The Fixed mode corresponds to a majority of elements in your chart, Léon Marchand, and represents the desire for security and durability: you are able to concretely appreciate a situation and its stability. You definitely prefer to play the role of a loyal, obstinate and hard-working person, rather than to try new and risky experiences - beware, however, not to confuse obstinacy with intransigence. You structure, cement, and strengthen everything you find on your way: it is your nature, although you are not especially interested in swiftness: slow and steady...

Your Dominants: Planets, Signs and Houses

The issue of dominant planets has existed since the mists of time in astrology: how nice it would be if a person could be described with a few words and one or several planets that would represent their character, without having to analyse such elements as rulerships, angularities, houses, etc!

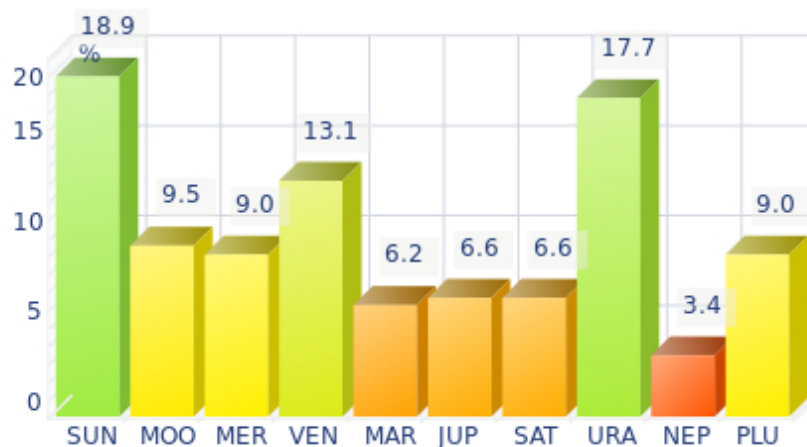
The ten planets - the Sun throughout Pluto - are a bit like ten characters in a role-play, each one has its own personality, its own way of acting, its own strengths and weaknesses. They actually represent a classification into ten distinct personalities, and astrologers have always tried to associate one or several dominant planets to a natal chart as well as dominant signs and houses.

Indeed, it is quite the same situation with signs and houses. If planets symbolize characters, signs represent hues - the mental, emotional and physical structures of an individual. The sign in which a planet is posited is like a character whose features are modified according to the place where he lives. In a chart, there are usually one, two or three highlighted signs that allow to rapidly describe its owner.

Regarding astrological houses, the principle is even simpler: the twelve houses correspond to twelve fields of life, and planets tenanted any given house increase that house's importance and highlight all relevant life departments: it may be marriage, work, friendship etc.

Léon Marchand, here is the evaluation diagramme for your planets:

Your Dominant Planets



The three planets that are most highlighted in your chart are the Sun, Uranus and Venus.

One of the dominant planets in your natal chart is the Sun. He symbolizes will, magnetism, sense of honour and dignity. You are a Solar being, and you often display charismatic and leadership qualities. Your warmth and your persuasive power lead you far away from pettiness. You enjoy thinking big and, consequently, you move forward according to what you decide.

Your Solarian weakness may be related to the sin of pride or to excessive authority. The frontier between pride and vanity is tenuous: be careful not to overstep it and to keep the nobleness of heart that is part of your charm.

Uranus is among your dominant planets: just like Neptune and Pluto, Uranian typology is less clearly defined than the so-called classical seven planets that are visible to the naked eye, from the Sun to Saturn. However, it is possible to associate your Uranian nature with a few clear characteristics: Uranus rhymes with independence, freedom, originality, or even rebelliousness and marginality, when things go wrong...

Uranus is Mercury's higher octave and as such, he borrows some of its traits of character; namely, a tendency to intellectualize situations and emotions with affective detachment, or at least jagged affectivity.

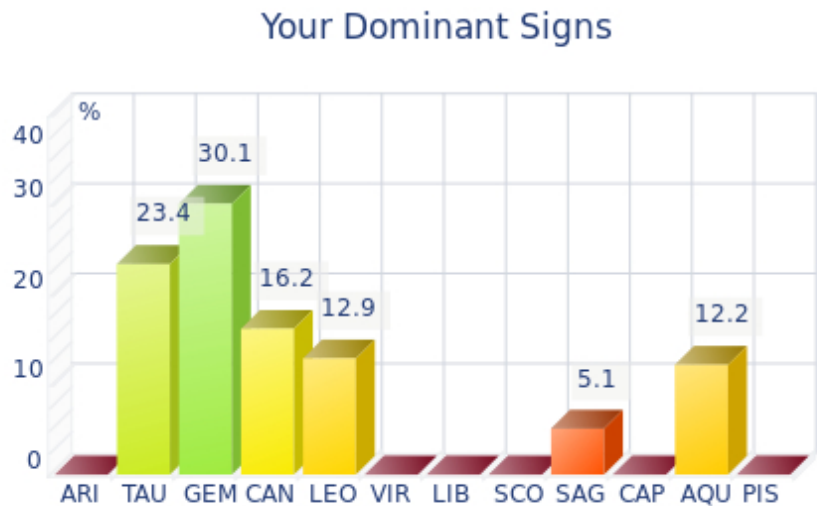
Therefore, you are certainly a passionate man who is on the lookout for any kind of action or revolutionary idea, and you are keen on new things. Uranians are never predictable, and it is especially when they are believed to be stable and well settled that... they change everything - their life, partner, and job! In fact, you are allergic to any kind of routine, although avoiding it must give way to many risks.

With Venus among your dominant planets, one of your first reflexes is... to please! Your look, your charm, and your seduction are omnipresent elements in your behaviour.

Your approach to things is connected to your heart, and for you, no real communication can flow if your interlocutors exude no sympathy or warmth. Cold and logical reasoning, clear thoughts and good sense are not important to you: if there is no affective bond with your environment, no connection can be

established with the Venusian that you are, and nothing happens.

You have a strong artistic side, and you never neglect subjective but clear concepts such as pleasure, beauty, and also sensuality. However, sometimes to the detriment of efficiency, durability, logic, and... detachment.



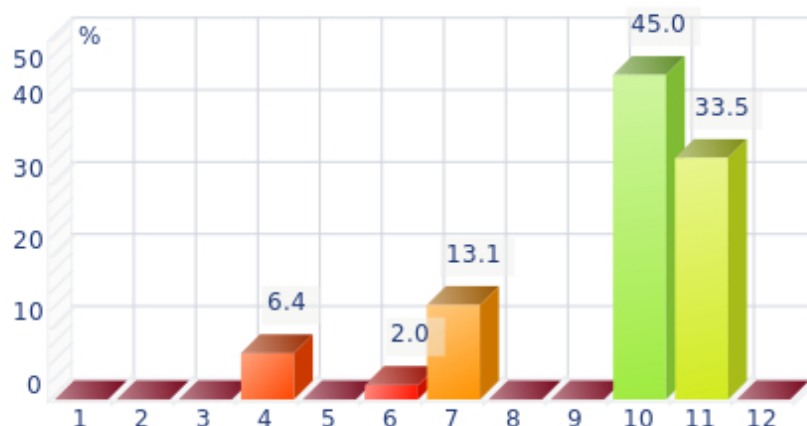
In your natal chart, the three most important signs, delineated according to the above-mentioned criteria, are, in decreasing order of strength, Gemini, Taurus and Cancer. They are often prominent because your Ascendant and your Sun are posited there. However, it is not always the case: it may be because they are occupied by a cluster of planets, by a planet near an angle other than the Midheaven and the Ascendant, or because two or three planets are very active and form numerous aspects from these signs. Therefore, you partly take on the three signs' characteristics, which are somehow superimposed on your natal chart, and all the more so if any of the signs in question is highlighted.

With Gemini as a dominant sign, your qualities include being lively, curious, mobile, clever, and flexible: you often make others dizzy, and you may come across as a dilettante - a bit inquisitive, shallow, and insensitive because you may be too intellectualizing. However, your natural curiosity, a nice quality, and your quick humour, allow you to demonstrate to everyone how much they may gain from your company, and that your apparent flightiness hides an appetite (particularly mental) for life, which itself conceals a terrific charm!

With the Taurus sign so important in your chart, you are constructive, stable, and sensual. Good taste, sense of beauty, manners, and unfailing good sense - all these qualities contribute to your charm and seductive power. Furthermore, if some people criticize your slow pace and your stubbornness, you rightly reply that this is the price for your security, and that you like the way it is - slow and steady....

Cancer is one of your dominant signs and endows you with imagination and exceptionally shrewd sensitivity. Although suspicious at first sight - and even at second...- as soon as you get familiar with people and let them win your confidence, your golden heart eventually shows up, despite your discretion and your desire for security that make you return into your shell at the slightest alert! Actually, you are a poet and if you are sometimes blamed for your nostalgia and your laziness, it is because your intense inner life is at full throttle...

Your Dominant Houses



Houses 10, 11 and 7 are the most tenanted ones in your natal chart. To compute their strength, planets and angles are weighed according to various astrological criteria such as swiftness, activity, angularity, rulership etc. From the analysis of the most tenanted Houses, the Astrologer deduces the fields of activity that are most relevant to you, be it because of what you are experiencing, or what you may experience in the future, or because of your deep inner motivations.

With a prominent 10th house, your destiny's achievement may be very notable: the 10th house represents your career, your public life, and your ambitions. A good deal of your energy may thus be used to successfully implement what you have in mind. Instinctively, you are very keen to make your dreams come true. Sooner or later, you will deal with the public, and your personal achievement will go through trials and ordeals: other people and visible actions.

The 11th house is among your dominant houses. Therefore, social life and friendships are very important, even strategic to you.

You think that group activities, whether in the humanitarian field or simple gatherings of friends, are endless sources of inspiration and of enjoyment, provided that there are no tensed aspects in this sector. Everything human is important to you, often more important than your own success, unless your 10th house is also powerful.

Your 7th house is one of your dominant houses: it symbolizes other people, marriages, associations, contracts, and partnerships. Your personal achievement and maybe your problems - depending on the rest of your chart - are mainly influenced by your rapports with others, the area in which you tend to commit yourself a lot. You appreciate communication, and you give importance to others' opinions. Success requires the support of others, which seems obvious and natural to you. Your marriage generally contributes to your fulfilment.

Your Style, Behaviour, and Peculiarities

What is commonly known as "sign" indicates the position of the Sun in the Zodiac. The Sun highlights all the characteristics of the sign he tenants. According to astrology traditional rules, these characteristics are all the more pure and exact when the Sun is strong in the sign, or when the sign is particularly highlighted within the chart. Here, we indicate the pure characteristics of the sign but you must bear in mind that they may only shed a light on a particular aspect of your personality. Indeed, the sole sign of the Sun, or of the Ascendant, can never describe an astrological chart because it depends on the degree of strength of the said sign in your chart.

Another important point must be underlined. Contrary to the Ascendant, which clearly describes your appearance, your vitality, your physical constitution, your spontaneous behaviour and the image you project, your Sun sign describes your inner self, which you may not completely be aware of, and which may emerge gradually as you mature: it is about your inner personality that you reveal only to the members of your entourage whom you trust. The Sun sign is likely to be the final form of your personality, once it has evolved in line with the energies of the other parts of your chart, the beginning of which is seen in the Ascendant, your external "bark".

The Ascendant is one of the major components of your natal chart. It is the zodiacal sign that rises in the East at the very moment of your birth. To calculate it, it is therefore necessary to know your exact time of birth.

It provides with a wealth of information on your personality. It is one of the key features that allows the analysis of several parts of you, such as your appearance, your character as it is initially perceived and your immediate behaviour. It describes the external aspect of your personality which you always display, but it also describes your physical constitution in the long-term, in other words, your health.

Please be aware that, in spite of the importance of the Ascendant, the accuracy of its description depends on how strongly highlighted it is in your natal chart. We use the entire set of astrological rules to assess the strength of the Ascendant. In most cases, the Ascendant is as revealing as your "sign", i.e., the sign where the Sun is posited at the time of birth.

You were born under the sign of Taurus and your Ascendant is in Leo

Before broaching the details of the meaning of your Sun and your Ascendant, as a preamble, we offer a brief generic interpretation of their combination in your chart:

These two signs are equally determined. Your Leo Ascendant influences your outward appearance, which is perceived by people who do not know you well, and it projects a quite demonstrative and even brilliant image. You have a real knack for showing yourself off to advantage, or in a subtler way, you manage to be admired. You are very conscious of the image you present, and you consider that humour and theatricality are your best assets. Because you use your look, some people may find you endearing. If one scratches this bright veneer, one finds a more natural, genuine, and simple personality. You are very stubborn in your ideas and your actions because both Taurus and Leo are Fixed signs, and therefore, inflexibility is one of your main traits. It is very hard for you to accept to lose control over any situation. Perhaps Taurus, which has strong concern for its self-interest, is slightly more able to change than proud

Leo.

You were born with the Sun in Taurus

Peace, joy of life and sensuality are essential to you: You have a simple and quiet nature. You easily find happiness because you are not competitive. In addition, your relaxed attitude and your common sense always take you to places where you are happy, even though you are not the number one, even though you do not move in haste. The important thing for you is to construct, with patience and persistence. These two qualities yield strong, steadfast, and sustainable efforts that can withstand any pitfalls.

You are gentle, with a slow thinking process, but once you have opted for an orientation, nothing, no one, can make you change your mind. You loathe changes in general, and once you have taken the few major unavoidable decisions in the course of your life, you are on track!

As you are born under this sign, you are loyal, steadfast, strong, patient, enduring, persistent, attached, sensual, realistic, constructive, tenacious, with a strong need for security. But you may also be stubborn, rigid, possessive, materialistic, static and slow.

In love, Sir, more often than not, your passions are strong. It may take you some time to be moved, but once your choice is made, it is a lasting one and you are particularly endearing and loyal. You are not interested in infidelity or in having numerous partners.

Your love emerges slowly but it grows in depth, like a root which solidifies with time. You are not too romantic because you are so practical and conventional... but your style and your sexiness compensate for your lack of idealism. You tend to associate the concept of marriage with that of lifestyle or of the benefits that come with it.

Your physical urges are pressing; you are sensual and pleasure takes an important place in your life. You appreciate partners who cook like a cordon-bleu and who may cause a few gastronomic excesses, but you readily accept them.

Your Ascendant is in Leo

Psychologically speaking, your nature is powerful and self-assured. You are a leader whose strength and nobleness naturally arouse your entourage's respect and adherence and your legitimacy is unquestioned. Your sense of commandment, the honour your person constantly exudes, your prestige and your charisma is a whole which puts you into the spotlight wherever you go.

As you are born under this sign, you are proud, determined, wilful, loyal, solemn, generous, ambitious, courageous, heroic, full of vitality, creative, confident, seductive, happy, daring, proud, majestic, honest, magnanimous, charismatic, responsible, noble, brilliant, radiant, dramatic, affectionate, full of humour, demonstrative, swaggering and self-confident. You can also be domineering, conceited, touchy, authoritarian, stubborn, intolerant, self-centered, irascible, violent, and nonchalant.

In love, Sir, you are very demanding. You are a powerful and loyal lover. Your partner must be the most beautiful and the most brilliant person and she must make you feel that she admires you. In such a case, your generosity has no limit and you give your love without reservation, with nobleness, liberalities and luxury. You set up a stable and brilliant home where children have the essential part.

The main danger is that you value trust to the extent that you grant it generously but too hastily: if you happen to find out that your trust is misplaced, the whole world around you crumbles and the relationship is forever damaged. In this regard, you are cut-and-dried and you feel so hurt and humiliated that you seldom can forgive.

Another similar danger comes from the fact that your expectations are very high and it is very unlikely that real life offers such unconditional and lasting love: for this reason, it is not unusual that you never marry, all the more so because your self-centered character is not prone to self-questioning...

The ruler of your chart is in Taurus

The ruler of the Ascendant, also referred to as the chart ruler, brings a few interesting nuances to the meanings provided by the Sun and the Ascendant. The sign in which the ruler of the Ascendant is posited fine-tunes the style of personality described by the Sun and the Ascendant. It may strengthen it if the sign is identical to either of them.

In your chart, the ruler of the Ascendant is the Sun. This specific feature means that the Sun's characteristics previously delineated are strengthened.

Aspects to your Ascendant

Several planets form an aspect with your Ascendant, Léon Marchand. Therefore, in their specific way, they modify your behaviour and your personality, which do not take on the pure characteristics of your Leo Ascendant only, but which are a blend of its characteristics with those of the said aspects.

★★★★★ Uranus opposite Ascendant, orb -2° 56'

Uranus is in opposition to your Ascendant, Léon Marchand. This is not really a dissonance since at the same time, Uranus is in conjunction with the opposite angle, the Descendant, or DS, which represents other people, associations, unions, and your rapport with people. Uranus is the planet of independence, originality, freedom, and nonconformism. With this configuration, you come across as very impulsive with an almost roller coaster personality. You establish ties very easily in friendship, business, or love, but... you break up as easily, according to your thirst for freedom and your rejection of any immediate constraint. Your behaviour has the charm of unpredictability, and you fully exploit it. You must add some stability into your attitude if you want to experience the joys of lasting human relationships. They offer as much, or even more than newness, you will see...

★★★★★ Sun square Ascendant, orb -0° 35'

There may be a contradiction between your will and your external appearance, Léon Marchand, which slows down your natural spontaneity and in some circumstances, gives rise to doubts regarding your behaviour towards other people and the need to be true to your own beliefs. There is certainly nothing serious with this minor dissonance between the Sun and your Ascendant, only choices that are to be made, so as to remain in harmony with yourself.

★★★★★ Venus sextile Ascendant, orb -0° 3'

Thanks to Venus, Léon Marchand, your behaviour is in harmony with your affective life, and you need not make any special effort in order to express your feelings in a natural way and without arousing people's criticisms. This asset enhances your natural easiness and charm, which is definitely not unpleasant!

★★★★★ Mars sextile Ascendant, orb 3° 04'

Your vitality and your taste for action are obvious, Léon Marchand. Thanks to Mars, your behaviour is often perceived as energetic, or at least, as action-oriented and enterprising. Your dynamism is one of your constant assets.

★★★★★ Moon semi-sextile Ascendant, orb -0° 3'

Your instinct seldom misleads you, as far as your external appearance is concerned, thanks to the Moon's soft aspect with your Ascendant, Léon Marchand. You keep your emotions under rather good control, in instinctive and smooth ways.

Your Sensitivity

Affectivity and intuition are very developed, Léon Marchand, and you are very sensitive to your environment. You “feel” atmospheres, moods and other people's emotions and when you capture negative influences, a feeling of ill-being immediately overwhelms you, all the more so because your lively imagination may destabilize you as it amplifies your receptiveness. Your nature is anxious and you tend to worry for your entourage. You strive to offer them a reassuring family atmosphere, the much needed comforting and warm sort of cocoon where you can laze around, at will. Because you care so much for your family, they may think that you are intrusive and that you try to rule their life through subtle affective blackmail. Trust them... and also learn to have more confidence in yourself!

You are popular with your friends, Léon Marchand. You easily shine, thanks to your sensitivity, your whimsical side, your mobility and your charm tinged with imagination. Even at work, you often win your clientele's favours, and if by chance, you are in a commercial team, you are chosen and sent ahead to deal with customers because you are so likeable!

You can happily express your emotions through shared projects - with your friends, preferably - in which you shine with selflessness and your childlike but endearing charm.

★★★★★ Sun sextile Moon, orb -0° 05'

This aspect is a strong homogeneity factor: the image you project is in conformity with your real nature and does not upset your basic balance. This is probably the cause of your feeling at ease, your consistent behaviour and your determination to remain your true self, regardless of external pressures and whatever is expected from you. At best, your will and your sensitivity are in harmony, your unconscious abilities are mobilized and controlled by your conscious will, with no imbalance. However, it is important to avoid the traps of self-satisfaction that would be harmful to your real exchanges and would lock you up in comfortable and rigid schemes. It is possible to remain natural and yet, not be content with the sole well being of those who never cheat themselves.

★★★★★ Moon semi-sextile Venus, orb 0'

The harmonious Moon-Venus aspect is an element of intimate balance that favours sensual and affective fulfilment. The search of well being includes all kinds of emotions and feelings. You love, you enjoy life in simple ways and you arouse your entourage's affection. The persons belonging to your inner circle are also objects of desire and pleasure. Tenderness and love are probably one and only thing: you are moved by the gestures of affection provided to you and by the daily acts which strengthen two persons' mutual attachment. Whereas other people dread routine, in your case on the contrary, it increases your amorous feelings. You loathe all kinds of violence, particularly in your intimate life. The danger of this planetary configuration may be your constant changes of mood: whims are often on the agenda... and your will is quite weak. One last point: this aspect is frequently found in the charts of people with an aesthetic or artistic sensitivity.

★★★★★ Moon inconjunction Uranus, orb -2° 26'

The Moon and Uranus intrinsically share little in common: they get along as well as fire and water! It is difficult for you to reconcile your desire for well being and intimacy with your destiny's dazzling passions and thunderbolts. You may feel that your intimate and family realm hampers your freedom. There is a potential for crises, explosions or splits. The desire for independence does not get on well with security concerns. There may be strong temptations endangering your very life foundations and you may embark upon a liberating and personal adventure. However, you fear rash decisions. Your need for security may

temper your impulses and put a brake on your individualistic aspirations. To harmonize these tendencies within your intimate life, you must leave yourself enough room for personal expression or for an activity of your own. Otherwise, as days go by, built-up tensions may jeopardize the quiet course of your life.

Your Affectivity

In your chart, the Sun is in Taurus and Venus, in Gemini. Two signs may follow each other and be quite different: Taurus' essential and fragile desire for balance opposes Gemini's will to discover, to experiment, to increase the variety of emotions and encounters (Venus). These two signs are definitely complementary. The Sun in Taurus facilitates the establishment of long-lasting affective adventures and therefore, it achieves fulfilment. Venus in Gemini hates to lock up the couple in a routine inevitably detrimental to the spontaneity and the plenitude of feelings. However, perfect balance can be achieved only when both tendencies are expressed – although they are antinomial in many regards. Selecting your partner, understanding and evolving abilities are decisive here. You must satisfy your solar sign's thirst for tranquillity and Venus' needs for novelty, alternately. You must meet the urges for intimacy, stability and the pressing necessity to fuel your passion, over and over again. As paradoxical as it may seem, you love only that very person who sometimes upsets Taurus' quietness and who challenges the serenity you dream of. Because passion is priceless. This is the price you have to pay for it.

What is it, that really appeals to you, Léon Marchand, to love or to please? You have so much charm and so much volubility that you easily manage to be what is known as a lady-killer. Feelings and intellect are so tightly mingled that you may not know any more whether you are really in love or whether you are acting. You have a taste for flirt and variety, and you appreciate very much complicated situations where no one knows where the truth lies any more. You shift from one game to another. To you, everything can be an agent for seduction, be it your attitudes, your words or the way you dress. You do not separate your actions from your desire to please. People who do not understand this are in trouble because, if they take your sweet and well-phrased speeches too literally, they are likely to undergo cruel disappointments: for you, it is only a matter of living in the moment and you never commit yourself because, above all, you loathe confinement, even just its thought.

In general, your sociability is impressive, Léon Marchand, and this powerful feature of your personality leads you to tread with ease between love and friendship, with your close entourage having some difficulties in discriminating, because you are so welcoming and charming. You are prone to obtain great satisfaction out of your friends and in most cases, you will be very naturally led to realize that your friendly relationship imperceptibly and gradually turns into a real love story! Besides, if by any chance your tie does not last forever, there is no doubt that you will be able to maintain a delightful rapport with your ex and, eventually, to get back to the ancient warm friendship which had served as the foundation of the idyll you had just experienced, with souvenirs as a bonus... Your affectivity is paradoxically both warm and unselfish because, like the astrological house that colours this part of your nature and the sign of Aquarius in analogy with the house, you are a refined and tolerant person, more focused on a large and collective vision rather than on a strictly personal approach in the romantic area. You are often granted protections for the projects you implement, particularly by your numerous feminine friendships. They deeply appreciate the cultured and refined side you exhibit at will and your inclination for your outings to the theatre, a concert, a conference etc. As far as feelings are concerned, your potential weaknesses may precisely stem from your detachment or from your lack of involvement, which, although they are natural for you, may offend or may shock some of your love relationships. They may criticize

you for some sort of distance or a half-hearted attitude and they may want you to change the way you express yourself: in such moments, be more demonstrative so as to prevent any possible budding reproaches...

★★★★★ Venus conjunction Mars, orb 3° 34'

With this aspect, innate affective behaviours prevail over opportunisms and calculations. You do not cheat with feelings and you prefer to be guided by your likes ... or your dislikes. Love is neither to be reasoned upon nor to be explained. It is important to experience one's passions spontaneously and to give free rein to the heart's tumultuous manifestations as well as to the body's demands. In other words, to be one's true self in the "now". You need to live intensely, to try all kinds of situations, sometimes to get hurt. Your sensitivity is the driving force behind your decisions and your actions. Real experiences are worth the best intellectual concepts. Spurred by your thirst for emotions, you try to build your life on bases that match your desires. Here, the trap may be that you pay too much attention to your moods and affects. But without them, life would be so dull. Even though emotionalism betrays you occasionally, it remains your best ally.

★★★★★ Venus trine Uranus, orb -2° 26'

Your charm lies in the originality of your approach to love and in your uncompromising attitudes. Your motto? Freedom of love, whatever the price! Should your sentimental life become dull, you find a solution: you are romantic and you reinvent your couple's life, you give a new and unexpected momentum to your emotions. You create the kind sharpness that contributes to your exceptional affective life. You do not fear love at first sight or blazing passions. On the affective plane, you know where you are heading for, whom you love ... or love not. There is an indisputable intransigence. The heart impulses are irrevocable and implacable. You dream of a sentimental life that fulfils your aspirations and you use all possible means to achieve your ideal. Even though you may have to make the necessary sacrifices.

★★★★★ Sun semi-sextile Venus, orb -0° 05'

This aspect gives a strong concern about the image you project. You pay a lot of attention to the impression you make and to the charm you exude. You need to know that you can rely on your seduction capacity and earn the liking of your entourage. What people think is important to you and you try to meet your close friends' expectations. You certainly want to please them, but above all, you need their attention. You are seeking pleasure, esteem and affection. But ideals and desires make up a whole: you can be at your best only with those who naturally attract you and for whom you have an esteem that is independent from facts. Your feelings are a response to your quest of the absolute: the persons you find likeable are adopted. Other people are rejected irrevocably! Your character is very affective and it constitutes an asset in many circumstances. Your capacity to seduce, to gain support and to earn esteem is above average. The only danger may be that you abide by the current fashion and trend more than by your own motivations and by what is essential, for the sake of appearances.

★★★☆☆ Venus sesqui-quadrate Neptune, orb 0° 18'

You are very idealistic in love and you may be blind. In many circumstances, you deem your sentimental life heavenly and you lay yourself open to delusions. Love is a dream and waking up is often painful. Your imagination distorts the game of intimate situations. It is important that you keep your sense of reality and that you avoid to embark upon dark or muddled paths. Forget about artificial paradises! The Tradition very rightly insists on the tendency for impossible love affairs. Your demand and your thirst for the absolute may make you dread to experience a common life that is inevitably flawed with

compromises and vagaries. The object of your affection is idealized « because it was her, because it was me » and you do not reckon objective elements that will resurface later in full force. With this planetary configuration, the danger is in the idealistic, even fanciful, nature of your affectivity. It is certain that love cannot be bought or reasoned. But how is it possible to live an absolute passion on a daily basis? You must control your heart impulses and, without losing the sentimental riches that are part of your charm, you must put what you love in harmony with what you dream of.

★★★★★ Venus opposite Pluto, orb -9° 28'

Nothing is simple in love. You consider your love life with a distant and remote glance. You do not believe in obvious, transparent relationships. Love is a complex issue and its machinery is beyond you. To avoid delusions and indifference, the rules must be changed. Your feelings are alternately cruel and passionate, distant and burning, often paradoxical. Are you the executioner or the victim? Power struggles are omnipresent in your affective life. You seem unable to take life as it comes and to love without asking yourself questions, without doubting. You often love those who are indifferent towards you, while you despise those who love you. It is important that you change your attitude if you want a smooth and happy life. Rely on your forte: an indisputable lucidity that makes it impossible to delude your heart.

The Way You Take Action and Your Sexuality

Léon Marchand, your mental activity is exuberant. Ideas are buzzing at high speed and you have the ability to think of several different things and to simultaneously process them. You are less interested in actions on the concrete or physical plane, because once you “see” a solution, its implementation is not that important any more since the crucial thing is that your mind remains bubbling with excitement. You are cerebral and curious and your sexuality is filled with fantasies, where pleasant ideas are mixed up with amplifying and enriching desires. Therefore, you are not simple but if your partner follows you, the stake is really worth it. Verbal jousting, the pleasure to debate and to discuss are continuous, with you. The only danger is to irritate people who may not have your swiftness or your sense of humour.

Your energy and your capacity for action are at the service of your career and your destiny, Léon Marchand : No doubt, this is one of the simplest and most transparent planetary configurations. You do not hesitate. For you, action means climbing up the social ladder, sooner or later, winning the marshal's baton, defeating setbacks through efforts and work, and overcoming the obstacles on your path.

You get your reward by the sweat of your brow, and you are aware that it is no easy business. Your personal approach is that nothing can be achieved without an effort because you are wise enough to be aware of it.

It is so deeply rooted in you that you may feel that you will get nothing if you do not fight for it. You are right, actually, at least as far as you are concerned, because it is your manner. Your destiny implies many struggles, and you have the necessary courage to join battle. However, as time unfolds, try to be gentle with yourself and indulge in a few moments of well-deserved rest and respite!

★★★★★ Mars opposite Pluto, orb -5° 53'

There is a limit to your respect for laws and norms! Morals, conventions, social marks are of little value to you. With a touch of anarchy in the soul, you disregard conventions and you experience a sort of personal

revolution. You prefer unconventional actions to dull conformism. To express your differences, you use a wide scope of possibilities that ranges from brewing revolt to ideological renunciation. Sometimes, you dismiss concrete facts that are nevertheless unavoidable. Hence, you undergo delusions and backlashes. You may also act rashly, to the detriment of your ideals. It is important that you control your actions and that you balance the respect for constraints with your personal demands and inner motivations.

★★★★★ Mars conjunction Saturn, orb 7° 12'

Persistent action always bears fruit eventually. All that is needed is patience... A quality you have, undoubtedly. As confrontations become unavoidable, you show strong persistence and indisputable perseverance. Potential obstacles are more stimulating to you than they are discouraging. You are naturally fit for effort and for confronting realities and facts. You quickly overcome difficulties and you respond to crises in an efficient and considerate manner. You are enduring. You handle events with rigour and precision. These are valuable qualities nowadays, for they often come with the capacity to undertake adventurous experiences and to take limited risks!

★★★★★ Mars trine Uranus, orb -6'

This harmonious Mars-Uranus aspect indicates an unshakable determination and the will to further your ideas through drastic, sudden, sometimes dramatic actions. You bend the string of your bow before taking action and you hit at the right time. The secret of your feats? An excellent command of your blitz actions. You concoct your plans in the dark, and then you move to an efficient and quick execution step that is often dazzling. You do not have the temperament of a loser. When you face an ordeal, you focus your entire energy and will on your unique aim: victory over any obstacle. This planetary configuration may lead to dangerous, even heroic actions. The danger is that you may over-estimate your strength or your chances for success.

Your Intellect and Your Communication Style

Léon Marchand, an enquiring intelligence, an instant understanding and a wide range of interests prompt you to go towards other people in all circumstances with a view to exchanging ideas and to show your talent for repartee. Ideas and actions must be quick and you are likely to be impatient, even critical and sarcastic with people who cannot match your frantic rhythm. You are very adaptable, you can do several different things at the same time and also think of a future action because you constantly need to be on the move. You may be criticized for your superficiality, for spreading yourself too thin and for your propensity to conceal the truth, but you always get out of tricky situations incredibly well because you are very astute, shrewd and charming.

Your lively and conciliating mind is at the service of your career, Léon Marchand. Your natural mobility enables you to constantly adjust and to get the positions you want. Your professional achievement is often the result of your ability to understand that the key to success is in changing.

With your extreme flexibility, you may be interested in many simultaneous occupations. In any case, it is unlikely that you remain in the same company or the same sector all your life, unless the said sector is full of variety, human rapports and travels.

★★★★★ Mercury trine Neptune, orb -1° 06'

Your sense of psychology and of human intimate mechanisms is acutely developed. Your relations are nuanced, clever and guided by a good intuition of individuals. Without effort, you pick up what is at stake in relationships and in contacts. Your « sixth sense » inspires you and may take you into strange roads. On the relations' plane, there is an indisputable subtlety. You know what you should not say or, on the contrary, you naturally find the suitable words. Your natural and non-rational attitudes often prove right. The unknown fascinates you... Your curiosity for occultism and mystery is keen. Besides, life is a huge human enigma for you.

★★★★★ Mercury conjunction Saturn, orb 5° 37'

Your vision of the world is rigorous and objective. An exemplary logic characterizes your mental attitude and your human relations. Your discerning faculties overlook no detail. You need to know the whys of your life and to explore the backstage of your surrounding world. The deepness of your relations dismisses superficial connections. It may be the reason why your interest is aroused when you are in touch with elements that are alien to your mode of functioning. You have the soul of a researcher, regardless of the form that your investigations may take. It may be an exacerbated curiosity for human topics or a will to understand relationship stakes. It may also be a hobby or a course of study that introduces you to a riddle. It does not matter! Life is a perpetual quest for the unknown. Your critical mind is highly developed and you take commonplaces for granted only after thorough consideration.

★★★☆☆ Mercury opposite Pluto, orb -6° 56'

Forget simplicity! You definitely enjoy acting behind the scenes and dealing with what is going on underneath. You play games and you operate in the dark. You leave the front of the stage to others and to the gullible ones. You don't display much sociability. When you are nice, it is because you are looking for flaws. This Mercury-Pluto dissonance mingles unconscious fantasies with reality. When it is kept under control, this aspect becomes an unparalleled source of discernment. To that aim, you must overcome your strong tendency for provocations. It is certainly amusing to play destabilizing games but it may also be dangerous. Keep this treatment for your opponents only.

★★★★★ Moon semi-square Mercury, orb 1° 24'

The Moon suggests relaxation, whereas Mercury implies a discoverer's mind. They both make sense and each one requires special attention, as they are sometimes upsetting. This Moon-Mercury aspect is likely to bring about nervousness or instability. Nervousness stems from the multiplication of the spots of interest and the perpetual restlessness of your mind, which prevents relaxation and well being from settling in. The outside world constantly appeals to your attention and you shift from one issue to another, to the detriment of your tranquillity. Therefore, it is important that you find the balance between two antinomial attitudes: letting-go versus curiosity, tranquillity versus communication. The new persons you meet with are not necessarily trustworthy and there is no certainty that the contact is harmonious. It is important that you use both influences alternately.

Your Goals, Motivations, Career, and Destiny

Your Sun is posited in the 10th House

Léon Marchand, your need for assertion is very strong. It is clearly oriented towards the success of your professional or social destiny, or at least, towards an important rise compared to your initial background;

your effort, your will and your goals are well defined in your mind: you have a concrete vision of the kind of destiny you are interested in and you do not want to stay on the backstage! Because in traditional astrology, the Midheaven relates to the mother, should other configurations of your chart concur, your mother might favour your ambition or speed up the success of your career.

You have an innate sense of commandment and a definite taste for honours, prestige, recognition of your self-worth. You don't like vagueness and your objectives are very concrete. You want to quickly leave anonymity and the quietness of the dark, for which you have no affinity. Your determined attitude, and your irresistible desire to play an increasingly important role in the position you hold, are major assets for the actual achievement of your goals. You want to shine forth and to heave yourself up, always higher and higher.

There are real indications of fame, provided that other elements of your chart concur. Even though you did not rise to fame, it is likely that, in your area, you enjoy some degree of glory. You are efficient and, with the help of your organizational skills, it is not difficult for you to find your spot in the sunshine.

In some rare cases, your ascent goes beyond the average ones and it may occur on the spiritual plane instead of the professional or the social plane. Therefore, you may be called upon to play a solar authority role in line with your beliefs and your commitment. You may become a leader or a master in the path you have chosen.

Even though you may hesitate to admit it and to tell others, your frenzied inclination for success inevitably brings about conflicts of authority; striving to heave yourself up, too high and too quickly, to a level that is so different from the one you were at, not so long ago, exposes you to clashes with the hierarchy or with those whom you regularly outgrow in the course of your ambitious journey and who may not agree with you.

There is also the fearsome and dormant danger of exhilaration of power and its disastrous consequences; hopefully, you do not have to jump into it with both feet. A fair dose of detachment and meditation may spare you many a trouble.

The ruler of your chart is in the 10th House

The ruler of the Ascendant, also referred to as the chart ruler as explained in a previous chapter, is also posited in one of the twelve Houses of the chart. Just like the Sun in his House, the ruler of the Ascendant provides certain abilities, or it makes you appreciate more keenly certain areas of life.

The ruler of your Ascendant is in the same House as your Sun. This specific feature of your chart strengthens the Sun's characteristics previously delineated.

Aspects influencing your ambitions

Regarding your destiny or your career, the following aspects of your natal chart allow to fine-tune what has just been said above:

★★★★★ Sun square Uranus, orb -2° 2'

This Sun-Uranus dissonance indicates a dazzling will to be the centre of attention and to proclaim your specificity, by all means. This aspect belongs to the rebel and the revolutionary restive to all forms of authority and of model. To balance this interpretation, the strong need for autonomy bordering on frenzied individualism must be highlighted. You allow nothing or no one to hinder your chosen line of conduct. Obviously, your attitudes are inflexible. You prefer to continue to the bitter end, even when you are wrong, rather than to be more open to people's ideas. Tyrannical attitudes often turn against the perpetrator... However, this configuration is a powerful agent for creativity, provided your hothead and extremist nature is kept under control.

★★★★★ Jupiter sextile Midheaven, orb -4° 06'

Jupiter is in soft aspect with your Midheaven, Léon Marchand. It means that you are often lucky, or that you receive support in your career or your social destiny. You trust your abilities to overcome obstacles coming up in your way, and you respect authority and laws. So, thanks to this configuration, you make your way in the world with the feeling that you move forward rather quickly, as compared to average people.

★★★★★ Sun conjunction Midheaven, orb 8° 29'

With the Sun in conjunction with the Midheaven, your will is entirely at the service of your ambitions. With such an aspect, Léon Marchand, it is most likely that your destiny is meant to be exceptional, and that you rise to some sort of fame. You may shine in your professional activity, or at least, you may enjoy an enviable social status as early as in the first part of your life. Besides, your profession may have a solar characteristic, which means any occupation with strong glamour, leadership, and personal authority components.

★★★★★ Pluto inconjunction Midheaven, orb 1° 03'

Owing to this dissonance of Pluto with your Midheaven, Léon Marchand, you may experience brutal changes in your professional or your living conditions. These upheavals are imposed on you by fate, and they sometimes take on a mysterious nature. Although you do not always understand the cause behind them, you must accept these changes as they occur, in order to bounce back in a different path, or just elsewhere.

★★★★★ Neptune square Midheaven, orb 6° 54'

Owing to this dissonance between Neptune and your Midheaven, Léon Marchand, you may have difficulties in knowing what you want regarding your professional orientation. Your imagination and your flexibility cause contradictory feelings and sometimes result in indecisiveness. You are doubtful about the path your social or professional destiny should follow. There is definitely nothing serious to worry about. It is just that Neptune represents a heavy emotional burden which you must firmly deal with, so as not to delay your trek towards success!

Your Assets and Your Part of Joviality

This planetary configuration in your chart is very positive, Léon Marchand, because Jupiter, the planet of Greater Fortune, is in his exaltation, which means, in a privileged position. Jupiter protects your family area and later, your own home. Your sense of responsibilities is increased, your inclinations for comfort and customs are strengthened; usually, you are well integrated in society. You mature affectively early, and this fact enables you to avoid many setbacks. The only danger with this pleasant configuration may be your attraction to good things, in all areas, and their consequences.

You inherit a heaven-sent present in the guise of your guardian angel, Léon Marchand! You are protected by powerful higher-ups or by your family. Your position with groups is favoured! Friendships, protections, and collective projects are three key words you should keep in mind as they constitute your... real assets, throughout your life.

The planet Jupiter symbolizes expansion, broadness and generosity. Jupiter is associated with the functions of synthesis, enthusiasm and optimism. In your natal chart, his house position is more important than his sign position because, like Saturn, Uranus, Neptune and Pluto, he is a slow planet. Many people born in the same period have Jupiter in the same sign. This is the reason why the sign occupied here is less meaningful than when it is occupied by the so-called fast planets, i.e. the Sun, the Moon, Mercury, Venus and Mars. Therefore, some caution is to be exercised as you read what follows.

Jupiter in Cancer is in the sign of his exaltation, which means that he is at great ease and he can express his essence more powerfully. He amplifies your emotions, your imagination and your optimism. You can be a good head of family or you develop a natural interest for matters linked to your home, your roots, your patrimony or that of your family. All your domestic affairs are protected.

Your Serious Side

Your liveliness and your superficiality are slowly transformed into secondarity, profundity of reflection, and interest for knowledge, contacts and logic.

Your responsibilities, Léon Marchand, constantly increase, slowly, but steadily, as years go by. Your acute sense of duty, your good management of time, your long-term vision, and your moral rigour are the qualities which contribute to your inexorable rise to power with, deep down, odd feelings of anxiety.

With your definite taste for power or for success, you work your way up the top place. But the danger to fall is strong. You need as much persistence to reach the heights of your career, as to... remain there! Many Heads of State have this configuration, at the same time beneficial and a source of potential disappointments if too much importance and energy are dedicated to it. Indeed, climbing to the top should be only one facet of life.

The planet Saturn symbolizes contraction, effort, time, limitation and concentration. Saturn eliminates anything that is not authentic, sooner or later. It is impossible to cheat him as he gives an irresistible desire to form a coherent whole with oneself, in responsible and wise ways. He is the great purifier. He represents our limitations but also our truth. In your natal chart, the house position where Saturn is posited is more important than his sign position because, like Jupiter, Uranus, Neptune and Pluto, he is a slow planet. Many people born in the same period have Saturn in the same sign. This is the reason why

the sign occupied here is less meaningful than when it is occupied by the so-called fast planets, i.e. the Sun, the Moon, Mercury, Venus and Mars. Therefore, some caution is to be exercised as you read what follows.

Saturn in Gemini decreases your lightness, your frivolousness, and your heedlessness. You become more thoughtful, more concentrate and you learn to deeply funnel your ideals; your practical sense is increased, your concern for punctuality and your thirst for precision are reinforced.

A Few Special Points

Your Uniqueness and Your Utopias

Your anticonformism regarding relationships prompts you to meet with very original people, and sometimes quite special ones. You may take the initiative to brutally and unexpectedly break up with persons whom you find too ordinary or too conventional.

Your thirst for freedom creates a very strong individual approach in your way of communicating and of handling relationships; you may distrust associations or marriage because, as soon as you start to feel imprisoned or not free enough, you run away without warning!

Actually, you are very demanding, and you are not aware that, most of the times, this is the very cause of your behavioural reversals. The solution is to move around with unusual people, it's as simple as that! Cohabitation is often advisable, except if your freedom and your curiosity are already satisfied on a daily basis.

Your Inspiration and Your Illusions

Your approach to daily life and your behaviour in your work environment are whimsical and abide by one single law: your mood or your feelings of the moment!

Although it may be detrimental to your own organization, it also endows you with qualities such as being easy-going, helpful, and ready to give assistance to those whom you perceive as nice persons.

Your health is quite fragile and, if the emotional sphere is unsatisfactory, you may transfer your moods to the physical plane and, for instance, you may be affected by allergies or problems difficult to identify.

Your Passion and Your Authority

In general, your childhood was under stress, for many different reasons. Your early life was not very easy, and you probably felt a deep anxiety for reasons... that were not always real.

In your intimate and private sphere, when you feel in confidence, you may be domineering and authoritarian, whereas in public, you never show this facet of your personality.

Your sensitivity is acute, and you may be affected by trivial things without ever displaying your hurt

feelings. But as you mature, your finesse becomes an asset instead of an element of vulnerability.

Symbolically, according to the Tradition, your father was authoritarian or domineering. This is not always true, but this is how you perceived him when you were a child.

Your Isolated Planets

In general, the ten planets of the chart are connected to other planets by major or minor astrological aspects. It is owing to those ties that the planets' energies can manifest in the chart owner's personality and play out within safeguards according to a specific tonality.

It seldom happens that in a natal chart, a planet is totally disconnected from the nine other planets.

Astrologers have observed that when such a case occurs, the person feels the energy of the unaspected planet in quite a singular way, very jerky and powerful at the same time. Thus, for instance, the famed astrologer Jean-Baptiste Morin de Villefranche wrote that "an unaspected planet heralds that something strange or extraordinary will take place regarding the meanings of the house in which the said planet is posited" (source : l'astrologie selon Morin).

Rules for detecting an unaspected planet: among all the testimonies that we have reviewed to this day, based on our experience, we tend to agree with American astrologer Janis Huntley who accepts seven aspects, which involve the zodiacal twelve sections of 30 degrees. The aspects to be considered are the conjunction (0 degree, cooperation or tension), the semi-sextile (30 degrees), the sextile and the trine (60 and 120 degrees respectively, aspects of cooperation), the square and the opposition (90 and 180 degrees respectively, tensed aspects), and the quincunx (150 degrees, slightly tensed). In this detection, the chart's angles are not taken into account.

In any case, it is important to remember that an isolated planet clearly expresses its influence when it is a personal planet. Thus, when the Sun, the Moon, Mercury, Venus, or Mars is isolated, it is certain that the effects described by Jean-Baptiste Morin de Villefranche will become manifest. As for Jupiter, Saturn, Uranus, Neptune, and Pluto, one must be cautious because the volume of cases documented is not yet large enough.

Your chart has no isolated planet, and this particular case does not apply to you.

Annex 1: Your Minor Dominants

The five following dominants are less significant than those described at the beginning of your report. They may not be strongly felt. In some cases, they add several minor details to the analysis of your character, but they are rather for curiosity purposes. It is not necessary to take them into account when you first read your portrait.

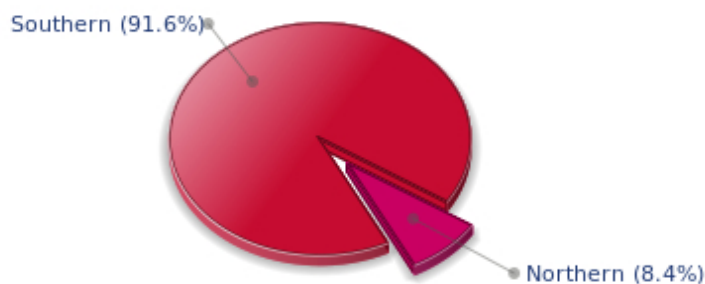
Your Planetary Repartitions: Northern, Southern, Eastern and Western Hemispheres

The axis linking the 1st house's cuspide (the Ascendant) to the 7th house's cuspide - the Descendant - divides the zodiac into two bowls, a superior bowl, in the South, and an inferior bowl in the North. Quoting an expression by the famous American astrologer Rudhyar, the Southern part and the Northern part correspond to two functions: "being" and "doing". Other concepts are also associated with this North and South distribution, such as introversion - Northern hemisphere - and extraversion - Southern hemisphere - being or appearances, inner life or external life, reflection or action, dreaming one's life or living one's dreams, the abstract or the concrete, backstage or limelight.

This is not about determination but about personal inclination: thus, some people will be thrown into public life despite a prominent Northern hemisphere. If this happens, however, it will not be due to their will, their taste or their deep nature. Conversely, a prominent Southern hemisphere will not bring about a famous destiny to its owner, even if he tends to turn the spotlight on himself, or if he looks for a more active life. It is a matter of deep nature and natural inclination. Of course, none of the typologies is "superior" to another.

In your birth chart, Léon Marchand, the ten main planets are distributed as follows:

Your Northern and Southern Hemispheres



Léon Marchand, the predominance of planets in the Southern hemisphere prompts you to take action, to draw attention on yourself, and to make your actions and what you have in mind visible to everyone. Sometimes, without giving a single thought to, and to the detriment of, a richer inner life and a deeper and wiser reflection. Action and communication are inevitable in your opinion, and you tend to think that the only thing that matters is what is seen! This is not always true, and it is up to you to progress through the development of inner qualities such as meditation, solitude and imagination so as to become stronger.

The birth chart is divided into two other parts, Eastern and Western, by the axis linking the Midheaven to the Imum Coeli.

The Eastern part, on the Ascendant side, shows the person's ego, will, magnetism, and vitality, whereas the Western part, on the Descendant side, symbolizes other people, communication, relationships and their influence, as well as flexibility and adaptability.

Léon Marchand, here is the planetary repartition in your Eastern and your Western hemispheres:

Your Eastern and Western Hemisphere:



The predominance of planets in the Eastern hemisphere of your chart enables you, Léon Marchand, to assert yourself and to rely on your determination: you know what you want and you have a tendency to take action and to decide with your personal goals as priorities, even if they can be in contradiction with what others think.

A definite asset... provided that you never make mistakes in your choices. You should pay more attention to your entourage in order to counterbalance your nature and to take advantage of your assets wisely. The danger is that you may be too authoritarian and not conciliating enough. Strong determination coupled with flexibility and acute sense of communication are qualities you should develop.

Your Yin and Yang Polarity

The twelve signs are divided into two polarities, called active or passive, or sometimes masculine and feminine, positive and negative, Yang and Yin. This classification corresponds to two quite distinct tonalities, the first one bringing extraversion, action, self-confidence and dynamism, the second one, introversion, reactivity, reflection and caution. None is superior to the other, each group has its own assets and shortcomings. Odd signs - Aries, Gemini, Leo, Libra, Sagittarius and Aquarius - belong to the first group, whereas even signs - Taurus, Cancer, Virgo, Scorpio, Capricorn and Pisces - belong to the second group.

Your Yin and Yang Polarity



According to the disposition and qualities of your planets and angles, you are rather influenced by Yang energy, the active polarity, Léon Marchand: more concerned about actions than reflection, you sometimes rush without standing back and without the deepness that is needed. However, your spontaneity prompts you to take fresh starts, even after repeated failures caused by your rashness.

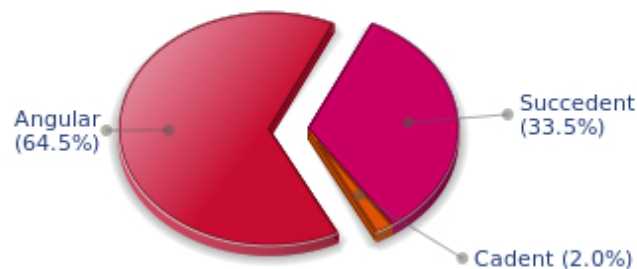
Your Houses' Accentuations

Houses are split up into three groups: angular, succedent and cadent.

The first ones are the most important ones, the most "noticeable" and energetic houses. They are the 1st, 4th, 7th and 10th houses. Their cuspides correspond to four famous angles: Ascendant for the 1st house, Imum Coeli for the 4th house, Descendant, opposite the Ascendant, for the 7th house and Midheaven for the 10th house, opposite the Imum Coeli.

Planets are evaluated according to a whole set of criteria that includes comprehensive Western astrology rules. At their turn, planets emphasize specific types of houses, signs, repartitions etc., as previously explained.

Your Houses' Accentuations



Your angular houses, namely, the 1st, 4th, 7th and 10th houses, are very emphasized in your chart, Léon

Marchand: according to the Tradition, they are the strongest and most dynamic houses. Should the rest of your chart concur, angular houses suggest that you are an enterprising, energetic and assertive man. Indeed, angular houses are said to generate impulsions and to give a powerful and domineering personality.

Unusual fates are often linked to a predominance of angular houses, but this is only a partial indication...

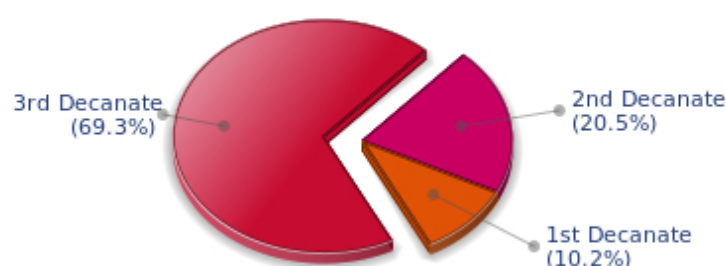
Your Esoteric Decanates

Each sign contains 30 degrees and can be divided into three equal parts: the decanates. The Tradition indicates that specific meanings can be associated to each of the three decanates. Their sphere of activity is usually limited to the Sun sign, however, it is even more interesting to observe the distribution of all the planets in the chart to get an idea of the respective importance of the three decanates, which can complement the description of the personality.

These meanings must be considered with the greatest caution. Indeed, they are minor characteristics that can only underline other outstanding traits of character.

Traditionally, the first decanate highlights the characteristics of the sign where a planet is located. The two other decanates correspond to sub-dominant planets, depending on the nature of each sign. This system leads to a multiplication of meanings and it is impossible to have a clear understanding: here, we prefer to give only the meaning of one decanate in comparison with the other two, within the birth chart as a whole. Again, the greatest caution is needed with regard to this minor indication as it is not always reliable: it is not essential that you read these texts in the beginning. You can get back to them later on, once you have read more important interpretations

Your Esoteric Decanates



The third decanate, which means the part between 20° and 30° of any zodiacal sign, prevails in your natal chart, Léon Marchand. It contains the degrees of spirituality, traditionally more delicate to deal with, since they incline towards evolution and therefore, destabilizations. Individuals with an emphasised third decanate may have deeper sensitivity than most people, which often brings ordeals but also spiritual rewards.

Annex 2: Karmic Study

The karmic theme is a good complement to the psychological portrait, or natal chart. This analysis is based on the positions of the Lunar Nodes, the Black Moon and the Part of Fortune: they are also called fictitious points and describe the spiritual purpose of your destiny. Because there is in all of us an experience and a quest, our life is an evolutionary journey... provided that we head towards the right direction, of course! Indian astrologers highly prize the Nodes axis (North Node and South Node). It is the Ariadne's thread that we are invited to follow. The Black Moon indicates the sector where we are most likely to transform or to transcend, whereas the Part of Fortune points out the area where we can easily express our specificity.

The Lunar Nodes: a spiritual path

Lunar Nodes have their roots in the Indian tradition and they are based on a simple concept: each of us have a mission of their own, here on earth, a destiny, a course. According to the Indian philosophy, life is a school: the nodal axis describes our past experiences (South Node, our karma, our spiritual inheritance or our previous lives), and our aims on earth (North Node, our Dharma, the purpose of our current incarnation). This is the reason why the study of the lunar nodes is called "Karmic astrology". Here, we shall not step into hypothetical past lives. Wherever our current trends may come from, all that really matters is that we become aware of the purpose of our life, its finality and our dharma. We are likely to understand our life purpose around the age of 37, when the Lunar Nodes return to their natal position.

The Lunar Nodes highlight all types of discoveries and explorations. There is a strong desire for travels, whether actual trips or spiritual, inner ones. Since your childhood, you are particularly interested in unlimited spaces and total freedom. You never trusted smothering attachments and you always allow your thoughts and actions a free hand. The danger is that your life may be unstable because you so badly need to evolve and to discover... Life is an eternal quest of something else, some vital but hidden dimension that is beyond you. Therefore, it is difficult for you to blossom when your family or work environment is routine. However, it is important that you control your wild tendency (the other side of the coin of the wonderful freedom of thought): life requires more sociability. It does not mean that you must accept a conformism that is too far from your inner aspirations. More than other people, you need to develop your relations, your exchanges and your dialogues. In this regard, your destiny is marked by communication.

Your life is marked with the major challenge of developing your social image, of asserting your personality... and of leaving your shell. Your childhood and your family roots are very present. You have an inclination for quietness, protections and intimacy. You enjoy at will the moments when you feel "at home", in known territory and familiar situations. But you must learn to thrive in society, to give of your best, to socially shine, particularly when you feel that external pressure and opinions are upsetting. Do not fall in the trap of your dreams and souvenirs! Life implies responsibilities and the will to control, otherwise you cannot feel your true self. You may be too dependent and you must learn to slowly become autonomous, free to take decisions and to take action. Your sense of duty allows you to climb all the steps of a perilous, yet thrilling, social ladder. As years go by, you claim more autonomy, more power and more freedom of action.

Lilith or the Dark Moon

The Black Moon is the spark of refusal and distance that is dormant in all of us. Depending on the sign where she is found in your chart, she highlights the desire to transform and to sublimate a part of your

life. The Black Moon is unfathomable and mysterious. She gives a different dimension to the sector she touches. Her manifestations are subtle; nonetheless, she is powerful, implacable, demanding to the extreme... The Black Moon is also called Lilith. She is the inner flame of your heroism and insubordination.

Your refusals are irrevocable: you may show violence when the situation is stuck... When facts hamper your aspirations, when everything does not seem to start moving soon, you tend to force your ways through events, regardless of the price to be paid. Your strengths and your weaknesses stem from all that: you may exercise a misplaced extremism, claiming great causes, whereas order can be restored in the simplest of ways. However, better than anyone else, you know how to maintain the pressure whenever it is needed, when the desire for deep changes takes precedence over submission or abdication.

The notion of freedom takes a special meaning: to be free does not only mean being able to move as you please here and there, nor does it mean having a few hours of leisure available. Above all, it means being able to lead a spiritual quest, to access a different dimension in life: to encounter, to travel, to love and to never be hampered by contingencies, never be slowed down by daily life. That'll take some doing! The comfortable routine of the contemporary world, in this regard, puts you off.

The Part of Fortune in House

The Part of Fortune is a very ancient fictitious point that depends on the lunar phase at the time of birth. The astrological house tenanted is particularly strengthened. In your chart, the Part of Fortune is in the 3rd house: communication constitutes your wealth. You strive to integrate your entourage's experiences, you are in search of a model to follow, of an original ideology or behaviour. Better than anyone else, you can observe your close friends and understand them. Therefore, your destiny hinges on relationships. You can achieve full balance as you make some room for exchanges and dialogues.

Retrograde Planets

The karmic tradition insists on the issues related to the so-called retrograde planets. They are considered to be the inheritance of a past that was not well experienced, a sort of unfinished business. The interpretations of the retrogradation may seem negative or excessive to you. However, you may relate to a scenario that you have often and repeatedly experienced... as if you underwent several setbacks that all have the same cause. Until the day you become aware of it and you can free yourself from it! Through the slow integration of these planetary energies, you will be able to overcome your difficulties and to pay your karmic debt. Actually, each retrograde planet highlights an opportunity for evolution. Nothing can be achieved without the will to grow spiritually and to defeat your own demons.

The planet Mercury was retrograde on the day of your birth. You probably have to make an effort to harmonize your relations: you are prone to screen others with a critical eye and you do not overlook the slightest flaw. You are exceedingly clear-sighted and you approach your contemporaries with distance rather than with natural. This type of behaviour may be an asset: your enquiring and pernickety mind prevents you from being too gullible. However, your reservations may impede your communication. As time goes by, you learn to establish contacts more spontaneously. During your childhood, you faced problems of expression in your heart of hearts: your doubts prompted you to project an image that was out of touch with the reality... turbulent or withdrawn, you could hardly establish conventional ties. As an adult, you are in a better control of these elements. You still have to find the right way to tell who you really are: this is how you can improve your relationships.

Neptune retrograding concerns spirituality. You may have expressed early in life a few reluctances about the subtle world of faith. You may have ignored destiny's signs and winks and you preferred to stick to your certainties, to a rigorous and objective control of your life. You dread your own aspirations and you readily trust others': this causes a lack of autonomy and the feeling that you may not receive as much as you give. However, several delusions teach you that you must relativize your calculating and methodical attitude and open up to the irrationality of love in order to find an inner and more spiritual progression. Embracing the invisible is a process that unfolds as years and experiences go by. Your own generosity increases as you become aware of your entourage's generosity.

Pluto retrograde suggests power issues and mishandled relations: for you, everything comes down to power struggles, submission and domination, Machiavellian manoeuvres, including within your couple... The results are complex behaviours and an obsession for the power to influence people. Yet, life teaches that you must simplify your relations and adopt more transparent attitudes and healthier desires... As years go by, you will tend towards more simplicity and you will slowly discover that human energy can, and must, be at the service of the good, or of well being, in compliance with our individual progression.

N.B: modern astrology attaches less and less importance to the principles of retrograding planets.

Conclusion

A few remarks are needed here in order to allow you to fully take advantage of your astrological portrait: firstly, do not forget that a birth chart is also a photograph of the sky at birth and a structure that not only contains the personality's characteristics, but also its potential evolution.

We all know that, in real life, people begin to know themselves when they are in their forties, or even later. Likewise, several traits of character in a portrait may seem surprising: in most cases, it means that such features are not yet developed.

Some personalities reveal themselves late in life, whereas others are more precocious. It must be remembered that psychological structures are in a state of continuous evolution because they are influenced by unfolding events and gradual maturity. We can never underline strongly enough the "mobile" nature of the personality, throughout a lifetime.

On the other hand, it is difficult to discriminate what is "already present" at this moment in your life when you are reading your chart's interpretation, from what will appear later in the logic of your evolution: you must sort out all the pieces of information provided and, in most cases, you will see that your astrological portrait is helpful for your endeavours to know yourself better.

Finally, several readings of an astrological portrait are usually necessary in order to absorb all its different meanings and to evaluate the relevance of each character trait.

In any case, better self-knowledge obviously contributes to faster personal blossoming, and it is undoubtedly one of astrology's major roles: contributing to know oneself better, in order to improve more rapidly, to deal with one's weaknesses and to avoid its drawbacks, and to take advantage of one's assets as efficiently as possible.
