



# Kevin Hart's Astrological Portrait





## Kevin Hart's Astrological Portrait



<b>Introduction</b>	<b>2</b>
<b>Your Planets, Houses, Aspects, and Natal Chart</b>	<b>4</b>
<b>Preamble</b>	<b>6</b>
<b>Your Planetary Repartitions</b>	<b>7</b>
<b>Your Dominant Modes and Elements</b>	<b>8</b>
<b>Your Dominants: Planets, Signs and Houses</b>	<b>9</b>
<b>Your Style, Behaviour, and Peculiarities</b>	<b>14</b>
<b>Your Sensitivity</b>	<b>18</b>
<b>Your Affectivity</b>	<b>19</b>
<b>The Way You Take Action and Your Sexuality</b>	<b>20</b>
<b>Your Intellect and Your Communication Style</b>	<b>21</b>
<b>Your Goals, Motivations, Career, and Destiny</b>	<b>23</b>
<b>Your Assets and Your Part of Joviality</b>	<b>25</b>
<b>Your Serious Side</b>	<b>26</b>
<b>A Few Special Points</b>	<b>26</b>
<b>Your Isolated Planets</b>	<b>27</b>
<b>Annex 1: Your Minor Dominants</b>	<b>28</b>
<b>Annex 2: Karmic Study</b>	<b>32</b>
<b>Conclusion</b>	<b>35</b>





# Kevin Hart's Astrological Portrait

## Introduction

To fully benefit from this portrait, we suggest that you read its introduction and its preamble carefully, and then that to take the time to soak up the interpretations of each chapter. Given the large number of texts, which mirrors the human being's complexity, you may need to go through the contents several times, so as to get a good grasp of their meaning and to know yourself better. This will reward your patience.

The purpose of this report is to describe your psychological portrait and to highlight the most fundamental features on the personal area. The report begins with the analysis of your planetary dominants and outlines your personality's general traits before going into further detail. Minor dominants are analysed at the end of Annex 1, for purposes of clarity. Your report then delineates the various facets of your personality:

In general, even when relationships are not involved, we express ourselves and we feel according to our character and our personal motivations: this is indicated by the Ascendant and the Sun sign which both give details on the way we function. They shed a tremendously important light which allows to figure out your personality. Here, we describe your Sun sign (your inner self), your Ascendant (your behaviour as seen by others), and the ruler of the Ascendant (interesting additional pieces of information about the style of your personality). These descriptions alone cover nearly a third or a half of your psychological signature, depending on your natal chart characteristics.

Then, we address your sensitivity, or in other words, the way you receive things and how you express your emotions ; it works as a constant filter for all your exchanges, even when it becomes a more secondary element in your amorous relationship, because at that moment, affectivity prevails. Sensitivity is the way you perceive things, it is your radar, your daily mood, and at the same time, it indicates how you react to your entourage, on a daily basis. It is what others immediately see of you. In the second paragraph, we explain in which areas of life your sensitivity and your emotions are strongest, therefore, where you are most vulnerable.

After this, it is your affectivity, the way you love and how you charm, that comes into play as soon as you fall in love: the first part indicates its basic structure or its main form. The second part describes the areas where it is best expressed and how you display it, according to your personality.

A third fundamental area deals with your mode of action and your sexuality: how you behave, how you manage to obtain what you want, what kind of desires you have. There are twelve possibilities, very

different from one another. The study discloses the specific one that applies to you. In the second paragraph, we explain in which life areas you may most efficiently take advantage of your capacity for action and for conquest.

Your ways of communicating and of thinking are obviously among the major elements that must be integrated into the delineation and the description of your personality. Indeed, they influence your general behaviour and may modify or enhance the image your project (for instance, extraversion may “compensate” a weak affectivity, but a huge number of cases are possible). An additional chapter indicates the favourite areas where you enjoy communicating, thinking and meeting with people.

Besides, we analyze an even more personal aspect that is important to define and understand what may occur within your couple: each of us have a centre of interest, a privileged manner to be fulfilled or to achieve our destiny; this main motivation is indicated by the positions of your Sun and your chart ruler in the astrological houses and we provide you with its detailed description.

A natal chart contains the potential for specific fulfilment and a whole range of assets, protections and qualities. How does the lucky factor manifest in your personality? In which area can you best exploit your qualities? The answers are precisely revealed to you in this chapter.

On the other hand, we all feel in us a part of vulnerability, doubts and fears. How does this part of solemnity or serious side play out? How is it possible to handle it in order to evolve and to get rid of useless elements? All this information is provided to you in these two paragraphs.

Then, you can discover three additional traits of your personality that must be considered as secondary ones. They deal with your predispositions, which means that they need to be triggered by external events because they are not influenced by your will; let's call it a part of fate. Please, bear in mind that your destiny can unfold only in accordance with what you are: therefore, even if they belong to your more unconscious self, these characteristics are parts of you, definitely.

The karmic chart complements the psychological portrait or natal chart. It is based on the positions of the Lunar Nodes, the Black Moon, and the Part of Fortune. These elements of the chart, sometimes referred to as fictitious points, provide information about the spiritual meaning of your destiny. Owing to the fact that we all have in us acquired knowledge and the urge to go on a quest, our life is an evolutionary journey... However, these texts must be read with great caution: this is the reason why you will find this analysis in the Annex 2 of your report.

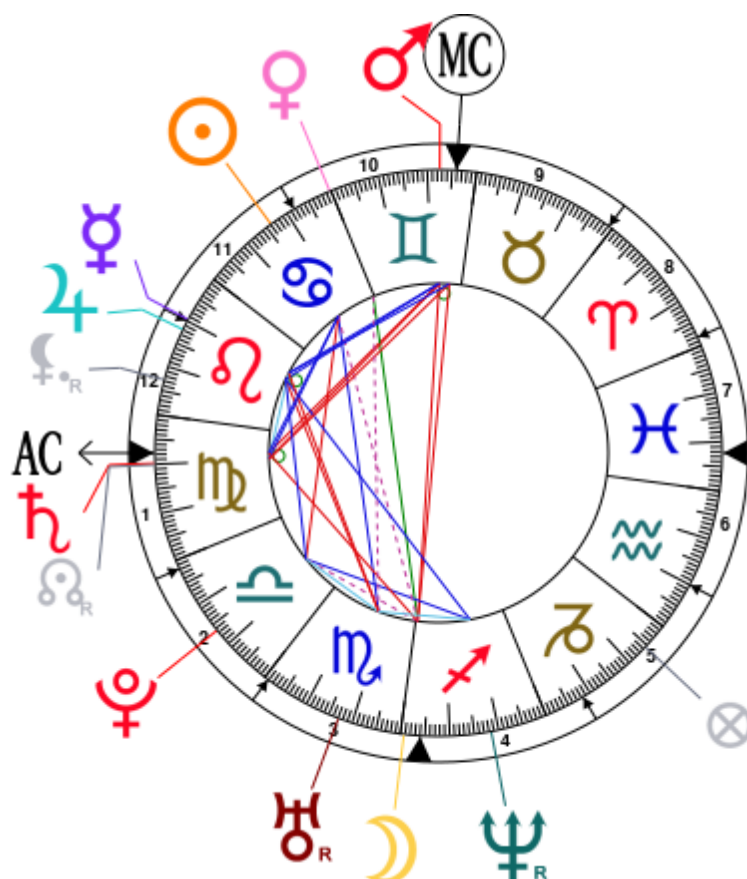


# Your Planets, Houses, Aspects, and Natal Chart

Kevin Hart, born July 6, 1979, at 10:13 AM, Temple University Hospital (Philadelphia), Pennsylvania  
[75.09W ; 40.00N ; 4W00]

Natal Planets				In House	Natal Houses (Placidus)		
☉ Sun	13°55'	♋ Cancer		House 11	House 1	7°44'	♍ Virgo
☾ Moon	0°44'	♐ Sagittarius		House 3	House 2	1°49'	♎ Libra
☿ Mercury	9°38'	♌ Leo		House 12	House 3	0°50'	♏ Scorpio
♀ Venus	0°16'	♋ Cancer		House 10	House 4	4°03'	♐ Sagittarius
♂ Mars	7°27'	♊ Gemini		House 10	House 5	8°21'	♑ Capricorn
♃ Jupiter	11°55'	♌ Leo		House 12	House 6	10°00'	♒ Aquarius
♄ Saturn	9°48'	♍ Virgo		House 1	House 7	7°44'	♓ Pisces
♅ Uranus	17°05' R	♏ Scorpio		House 3	House 8	1°49'	♈ Aries
♆ Neptune	18°27' R	♐ Sagittarius		House 4	House 9	0°50'	♉ Taurus
♇ Pluto	16°27'	♎ Libra		House 2	House 10	4°03'	♊ Gemini
♊ Node	10°08' R	♍ Virgo		House 1	House 11	8°21'	♋ Cancer
♋ Lilith	22°46' R	♌ Leo		House 12	House 12	10°00'	♌ Leo
AS AS	7°44'	♍ Virgo					
MC MC	4°03'	♊ Gemini					

In keeping with the common practice, we consider that a planet posited within 1 degree of the next house belongs to that house. We allow an orb of 2 degrees for the ASC and the MC.



## List of Your Active Planetary Aspects

Please find below the list of all the active inter-aspects which are interpreted in this report, in addition to your planets in sign, in house, and all your planetary dominants. Since the aspects between slow-moving planets are of a collective nature, they are not displayed, in compliance with our interpretation rules.

- ★☆☆☆☆ Sun sesqui-quadrate Moon, orb 1° 48'
- ☆☆☆☆☆ Sun sextile Saturn, orb -4° 06'
- ☆☆☆☆☆ Sun trine Uranus, orb 3° 09'
- ★★★★★ Sun square Pluto, orb 2° 31'
- ☆☆☆☆☆ Sun sextile Ascendant, orb -6° 1'
- ★★★★★ Moon inconjunction Venus, orb 0° 28'
- ★★★★★ Moon opposite Mars, orb -6° 42'
- ★★★★★ Moon semi-square Pluto, orb -0° 42'
- ☆☆☆☆☆ Moon square Ascendant, orb -7'
- ☆☆☆☆☆ Moon opposite Midheaven, orb -3° 19'
- ☆☆☆☆☆ Mercury sextile Mars, orb 2° 11'
- ☆☆☆☆☆ Mercury conjunction Jupiter, orb 2° 16'
- ☆☆☆☆☆ Mercury semi-sextile Saturn, orb 0° 1'
- ☆☆☆☆☆ Mercury square Uranus, orb 7° 27'
- ☆☆☆☆☆ Mercury sextile Midheaven, orb 5° 34'
- ☆☆☆☆☆ Venus sesqui-quadrate Uranus, orb 1° 49'
- ☆☆☆☆☆ Mars sextile Jupiter, orb 4° 28'
- ★★★★★ Mars square Saturn, orb 2° 21'
- ★★★★★ Mars square Ascendant, orb 0° 17'
- ☆☆☆☆☆ Mars conjunction Midheaven, orb 3° 23'
- ☆☆☆☆☆ Saturn conjunction Ascendant, orb 2° 04'
- ☆☆☆☆☆ Saturn square Midheaven, orb 5° 44'

## Meaning of Stars

Stars indicate the strength of the aspects. Two solid coloured stars (there are half-stars also), mean that the aspect is powerful enough to be noticed at the first reading.

We strongly advise that you read the paragraphs displaying less than two stars later on, after you have absorbed the full import of the other texts.

The yellow colour indicates a soothing and conciliating aspect, and the red colour, a dynamic and tense aspect. The red aspects enable you to evolve, to take action, and to learn to turn your "weaknesses" into assets through your life experiences. The yellow aspects are innate strengths on which you rely in order to grow better with the former...

## Preamble

When interpreting a natal chart, the best method is to start gradually from general features to specific ones. Thus, there is usually a plan to be followed, from the overall analysis of the chart and its structure, to the description of its different character traits.

In the first part, an overall analysis of the chart enables us to figure out the personality's main features and to emphasize several points that are confirmed or not in the detailed analysis: in any case, those general traits are taken into account. Human personality is an infinitely intricate entity and describing it is a complex task. Claiming to rapidly summarize it is illusory, although it does not mean that it is an impossible challenge. It is essential to read a natal chart several times in order to absorb all its different meanings and to grasp all this complexity. But the exercise is worthwhile.

In brief, a natal chart is composed of ten planets: two luminaries, the Sun and the Moon, three fast-moving or individual planets, Mercury, Venus and Mars, two slow-moving planets, Jupiter and Saturn, and three very slow-moving planets, Uranus, Neptune and Pluto. Additional secondary elements are: the Lunar Nodes, the Dark Moon or Lilith, Chiron and other minor objects. They are all posited on the Zodiac wheel consisting of twelve signs, from Aries to Pisces, and divided into twelve astrological houses.

The first step is to evaluate the importance of each planet. This is what we call identifying the dominant planets. This process obeys rules that depend on the astrologer's sensitivity and experience but it also has precise and steady bases: thus, we can take into account the parameters of a planet's activity (the number of active aspects a planet forms, the importance of each aspect according to its nature and its exactness), angularity parameters; (proximity to the four angles, Ascendant, Midheaven, Descendant and Imum Coeli or Nadir, all of them being evaluated numerically, according to the kind of angle and the planet-angle distance) and quality parameters (rulership, exaltation, exile and fall). Finally, other criteria such as the rulership of the Ascendant and the Midheaven etc. are important.

These different criteria allow a planet to be highlighted and lead to useful conclusions when interpreting the chart.

The overall chart analysis begins with the observation of three sorts of planetary distributions in the chart: Eastern or Western hemisphere, Northern or Southern hemisphere, and quadrants (North-eastern, North-western, South-eastern and South-western). These three distributions give a general tone in terms of introversion and extraversion, willpower, sociability, and behavioural predispositions.

Then, there are three additional distributions: elements (called triplicity since there are three groups of signs for each one) - Fire, Air, Earth and Water - corresponding to a character typology, modality (or quadruplicity with four groups of signs for each one) - Cardinal, Fixed and Mutable - and polarity (Yin and Yang).

There are three types of dominants: dominant planets, dominant signs and dominant houses. The novice thinks astrology means only "to be Aries" or sometimes, for example, "to be Aries Ascendant Virgo". It is actually far more complex. Although the Sun and the Ascendant alone may reveal a large part of the character - approximately a third or a half of your psychological signature, a person is neither "just the Sun" (called the sign) nor just "the first house" (the Ascendant). Thus, a particular planet's influence

may be significantly increased; a particular sign or house may contain a group of planets that will bring nuances and sometimes weaken the role of the Ascendant, of the Sun sign etc.

Lastly, there are two other criteria: accentuations (angular, succedent and cadent) which are a classification of astrological houses and types of decanates that are occupied (each sign is divided into three decanates of ten degrees each). They provide some additional informations.

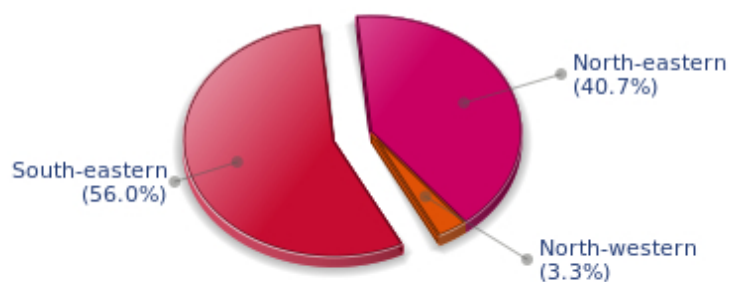
These general character traits must not be taken literally; they are, somehow, preparing for the chart reading. They allow to understand the second part of the analysis, which is more detailed and precise. It focuses on every area of the personality and provides a synthesis of all the above-mentioned parameters according to sound hierarchical rules.

As explained in the introduction of your Psychological Portrait report, minor dominants are analysed at the end of Annex 1, for purposes of clarity.

## Your Planetary Repartitions

Each quadrant is a combination of the four hemispheres of your birth chart and relates to a character typology. The Southern hemisphere – the top of your chart, around the Midheaven – is associated with extraversion, action, and public life, whereas the Northern hemisphere prompts to introversion, reflexion, and private life. The Eastern hemisphere – the left part, around the Ascendant – is linked to your ego and your willpower, whereas the Western hemisphere indicates how other people influence you, and how flexible you are when you make a decision.

### Your Four Quadrants



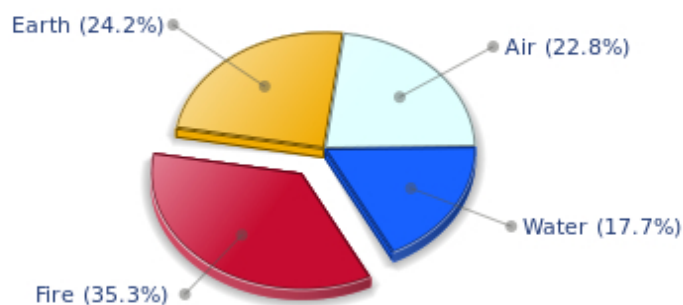
Kevin Hart, the diurnal South-eastern quadrant, consisting of the 10th, 11th and 12th houses, prevails in your chart: assertion and goals achievement are at the centre of your concerns. You are very keen to implement your dreams and your plans. You achieve your ambitions as soon as possible, whether through an active social life, highly charged friendly relations, or an urge to take actions in order to reap - in the eyes of the world, of course - the rewards of your dynamism. It is likely that spirituality or humanitarian actions are part of your motivations, sometimes at the price of some degree of isolation.



## Your Dominant Modes and Elements

Kevin Hart, here are the graphs of your Elements and Modes, based on planets' position and angles in the twelve signs:

### Your Four Elements

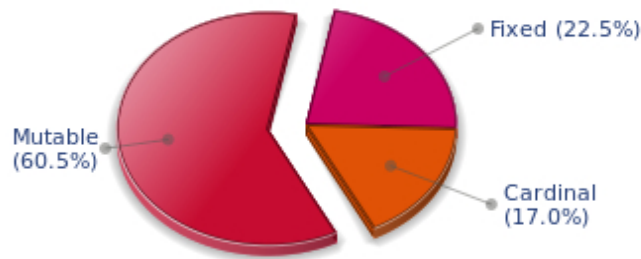


Kevin Hart, Fire is dominant in your natal chart and endows you with intuition, energy, courage, self-confidence, and enthusiasm! You are inclined to be passionate, you assert your willpower, you move forward, and come hell or high water, you achieve your dreams and your goals. The relative weakness of this element is the difficulty to step back or a kind of boldness that may prompt you to do foolish things.

Like the majority of Earth signs, Kevin Hart, you are efficient, concrete and not too emotional. What matters to you is what you see: you judge the tree by its fruits. Your ideas keep changing, words disappear, but actions and their consequences are visible and remain. Express your sensitivity, even if it means revealing your vulnerability. Emotions, energy and communication must not be neglected; concrete action is meaningless if it is not justified by your heart, your intellect or your enthusiasm.

The twelve zodiacal signs are split up into three groups or modes, called quadruplicities, a learned word meaning only that these three groups include four signs. The Cardinal, Fixed and Mutable modes are more or less represented in your natal chart, depending on planets' positions and importance, and on angles in the twelve signs.

## Your Modes



The Mutable mode is the most emphasized one in your natal chart, Kevin Hart, which indicates a mobile character that is curious and thirsty for new experiences and evolution. You are lively and flexible, and you like to react quickly to solicitations, but don't confuse mobility with agitation, since this is the danger with this configuration - and with you, stagnation is out of the question. Security doesn't matter as long as you are not bored. You optimize, you change things, you change yourself... all this in a speedy way.

## Your Dominants: Planets, Signs and Houses

The issue of dominant planets has existed since the mists of time in astrology: how nice it would be if a person could be described with a few words and one or several planets that would represent their character, without having to analyse such elements as rulerships, angularities, houses, etc!

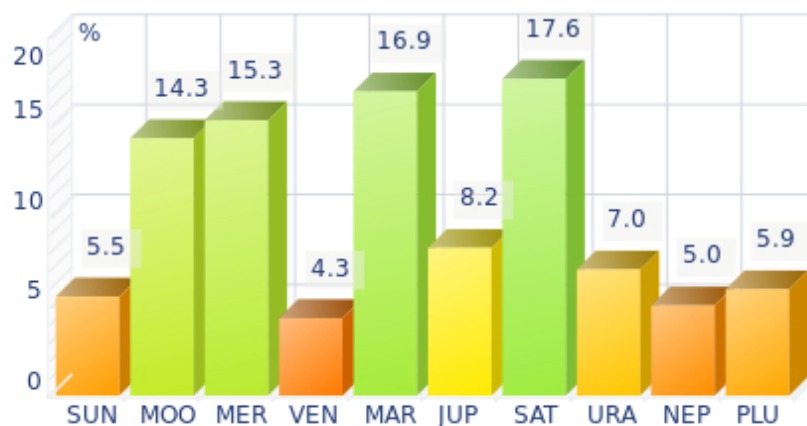
The ten planets - the Sun throughout Pluto - are a bit like ten characters in a role-play, each one has its own personality, its own way of acting, its own strengths and weaknesses. They actually represent a classification into ten distinct personalities, and astrologers have always tried to associate one or several dominant planets to a natal chart as well as dominant signs and houses.

Indeed, it is quite the same situation with signs and houses. If planets symbolize characters, signs represent hues - the mental, emotional and physical structures of an individual. The sign in which a planet is posited is like a character whose features are modified according to the place where he lives. In a chart, there are usually one, two or three highlighted signs that allow to rapidly describe its owner.

Regarding astrological houses, the principle is even simpler: the twelve houses correspond to twelve fields of life, and planets tenanted any given house increase that house's importance and highlight all relevant life departments: it may be marriage, work, friendship etc.

Kevin Hart, here is the evaluation diagramme for your planets:

## Your Dominant Planets



The three planets that are most highlighted in your chart are Saturn, Mars and Mercury.

Saturn is part of your dominant planets: among the facets of your character, you have a grave and serious side, wise and somewhat severe, since your concentration can be powerful, to the detriment of carelessness and friendliness.

You often look austere, but it is only an appearance, a kind of modesty or reserve; however, it is true that the Saturnian, who is fond of time, effort, asceticism, rigour and sobriety, may have popularity issues. Nevertheless, honesty and straightforwardness, reliability, as well as slow, wise and deep mental process, although not very popular and visible qualities, eventually become noticed and appreciated. Saturnians' second part of life is usually easier and more fulfilling.

Like the Jupiterian, your Saturnian facet prompts you to seek the essential, security, and longevity. However, the difference with the former is that you will never give priority to wealth or "the bigger, the better" philosophy for the sake of power. Saturn, like Jupiter, symbolizes social integration, and it is usually considered positive to have a harmonic Jupiter and Saturn in one's chart because of their social adaptation capacities.

Your vulnerability lies in your too serious and austere side, which may lead to unwanted loneliness and affective frustration. This generally does not last because Saturnians often hide deep down a golden heart that ends up revealing itself...

Mars is one of your dominant planets and provides you with its efficient energy and enthusiasm: with a powerful Mars in your chart, action - but also will and ability to undertake - is not an empty word for you. You are active, dynamic, willing to fight, courageous, and you are never afraid to move mountains, even though risks are part of the adventures that you start with determination.

However, your patience is not always up to your boldness and a kind of feverishness, or even anger, can tarnish the quality of your achievements. That would be a pity since the Marsian is a champion in matters of efficiency! Mars symbolizes display of action, conquering spirit that favours discipline and order - beware of not being fussy - and lies at the frontier between action and brutality, between conquest and potential aggressiveness.

With Mercury among your dominant planets, you are certainly cerebral, nervous, swift, curious, quick-witted, and you love to communicate. Your psychological pattern is intellectual, all the more so since Mercury is important, with its whole set of assets but also of weaknesses, obviously.

Your sensitivity, emotions, and heart's impulses give precedence to thinking, which can lead people to believe that you are a playful and witty but heartless person, intellectualizing situations and juggling with words and numbers whilst ignoring human aspects of things. Of course, it is said that cats always land on their feet - this is your Mercurian strength and your trump card!

Your weakness lies in your nervousness, and you may miss your goal because of your "over-intellectualization" that may be detrimental to other kind of energies such as instinct, spontaneity, heart, sensitivity, etc.

Your Dominant Signs



In your natal chart, the three most important signs, delineated according to the above-mentioned criteria, are, in decreasing order of strength, Virgo, Gemini and Leo. They are often prominent because your Ascendant and your Sun are posited there. However, it is not always the case: it may be because they are occupied by a cluster of planets, by a planet near an angle other than the Midheaven and the Ascendant, or because two or three planets are very active and form numerous aspects from these signs. Therefore, you partly take on the three signs' characteristics, which are somehow superimposed on your natal chart, and all the more so if any of the signs in question is highlighted.

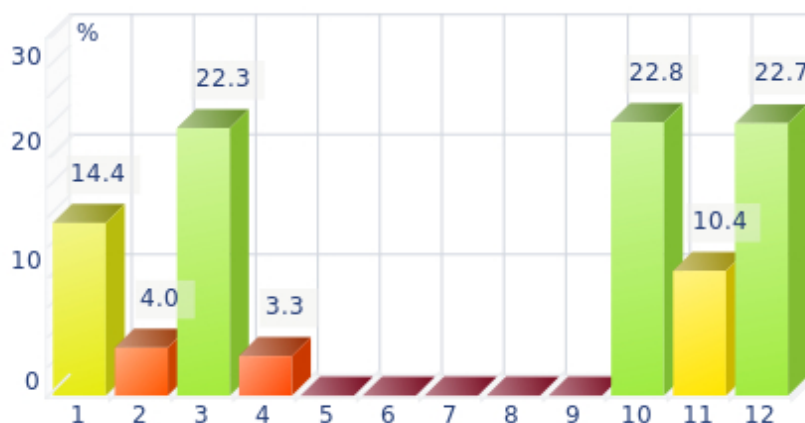
Virgo, associated with perfectionism, numbers and reason, is among your dominant signs: you inherit its sense of responsibility and tidiness, a clear mind, an unfailing logic, as well as a need to be useful and to fulfil your task to the best of your abilities. Obviously, people may think that you are too modest or reserved, suspicious or pessimistic because of your exceedingly critical mind, but aren't logic and wisdom great qualities? Of course, they are. Moreover, you keep your feet on the ground, you never behave irrationally and you are helpful and hardworking - what more can you ask for?!

With Gemini as a dominant sign, your qualities include being lively, curious, mobile, clever, and flexible: you often make others dizzy, and you may come across as a dilettante - a bit inquisitive, shallow, and insensitive because you may be too intellectualizing. However, your natural curiosity, a nice quality, and your quick humour, allow you to demonstrate to everyone how much they may gain from your company, and that your apparent flightiness hides an appetite (particularly mental) for life, which itself conceals a

terrific charm!

With Leo as a dominant sign, you naturally shine brightly. Your dignity, your sense of honour, and your generosity can almost turn you into a solar mythological hero, a knight or a lord from the ancient times. People may blame you for your selfishness, your pride or your somewhat loud authority, but if you are self-confident, kind-hearted and strong-willed, it surely makes up for your little flaws, as long as they remain moderate...

Your Dominant Houses



Houses 10, 12 and 3 are the most tenanted ones in your natal chart. To compute their strength, planets and angles are weighed according to various astrological criteria such as swiftness, activity, angularity, rulership etc. From the analysis of the most tenanted Houses, the Astrologer deduces the fields of activity that are most relevant to you, be it because of what you are experiencing, or what you may experience in the future, or because of your deep inner motivations.

With a prominent 10th house, your destiny's achievement may be very notable: the 10th house represents your career, your public life, and your ambitions. A good deal of your energy may thus be used to successfully implement what you have in mind. Instinctively, you are very keen to make your dreams come true. Sooner or later, you will deal with the public, and your personal achievement will go through trials and ordeals: other people and visible actions.

The 12th house is emphasized in your chart: like the 8th house, it has a rich and complex meaning. Although its bad reputation is likely to scare most readers in the first place - it is indeed the house of hidden or isolated places, of solitude, of ordeals or enemies - it can also mean that a part of your life is very deep and intense. If your achievements are not visible in the public eye, you may fulfil yourself in a different but equally important way: you may be involved in secret activities, humanitarian causes, and projects in favour of disadvantaged people. You are likely to work in quiet and remote places. In many cases, you will gain from these hidden activities as many treasures as people who have a more public destiny. It may be because you sublimate your work, or only because you successfully carry out your task within your environment. There is no such things as a good or a bad house, because each area of life is necessary in its own way, and we need all of them, if we are to improve spiritually.

As the 3rd house is one of the most important houses in your chart, communication plays a major role in your life or in your deep motivations: frequent short trips, open-mindedness - which may offset a lack of



mutable signs for instance - listening, discussion, interest in learning, knowledge accumulation or long-term studies, etc., are all areas that greatly appeal to you and are part of your daily life.

## Your Style, Behaviour, and Peculiarities

What is commonly known as "sign" indicates the position of the Sun in the Zodiac. The Sun highlights all the characteristics of the sign he tenants. According to astrology traditional rules, these characteristics are all the more pure and exact when the Sun is strong in the sign, or when the sign is particularly highlighted within the chart. Here, we indicate the pure characteristics of the sign but you must bear in mind that they may only shed a light on a particular aspect of your personality. Indeed, the sole sign of the Sun, or of the Ascendant, can never describe an astrological chart because it depends on the degree of strength of the said sign in your chart.

Another important point must be underlined. Contrary to the Ascendant, which clearly describes your appearance, your vitality, your physical constitution, your spontaneous behaviour and the image you project, your Sun sign describes your inner self, which you may not completely be aware of, and which may emerge gradually as you mature: it is about your inner personality that you reveal only to the members of your entourage whom you trust. The Sun sign is likely to be the final form of your personality, once it has evolved in line with the energies of the other parts of your chart, the beginning of which is seen in the Ascendant, your external "bark".

The Ascendant is one of the major components of your natal chart. It is the zodiacal sign that rises in the East at the very moment of your birth. To calculate it, it is therefore necessary to know your exact time of birth.

It provides with a wealth of information on your personality. It is one of the key features that allows the analysis of several parts of you, such as your appearance, your character as it is initially perceived and your immediate behaviour. It describes the external aspect of your personality which you always display, but it also describes your physical constitution in the long-term, in other words, your health.

Please be aware that, in spite of the importance of the Ascendant, the accuracy of its description depends on how strongly highlighted it is in your natal chart. We use the entire set of astrological rules to assess the strength of the Ascendant. In most cases, the Ascendant is as revealing as your "sign", i.e., the sign where the Sun is posited at the time of birth.

## You were born under the sign of Cancer and your Ascendant is in Virgo

Before broaching the details of the meaning of your Sun and your Ascendant, as a preamble, we offer a brief generic interpretation of their combination in your chart:

With your Cancer Sun, you enjoy collecting all sorts of things and symbols, both in the literal and figurative senses, and you do so in the sweet anarchistic way which you jealously protect. Cancer revels in its Capernaum and the real sense of security it provides. Your Virgo Ascendant, which influences your outward appearance, prefers to sort out, file, organise, and analyse because it is concerned about efficiency and perfection and obsessed by the slightest untidy detail. People appreciate your legendary reassuring helpfulness, your humble, discreet and reserved manners, as well as your sound rational analyses. Nevertheless, people should make no mistake. Indeed, beneath your introverted demeanour, your Cancer inner self remains active and is endowed with a strong high-esteem, even though at times, it yearns for the illusory power which its vivid and megalomaniac imagination instils into its dreams.

## **You were born with the Sun in Cancer**

Psychologically speaking, your nature is dreamy, oriented towards nostalgia for things past. You are very instinctive and you protect yourself against the outside world. Your inner life is rich, with fertile and even unlimited imagination, a propensity to avoid unnecessary risks and to pursue security. You show your true face only to persons you can trust, when there is a kind of well being triggered by the nostalgia for the past.

As you are born under this sign, you are emotional, sentimental, restful, imaginative, sensitive, loyal, enduring, protective, vulnerable, generous, romantic, tender, poetic, maternal, dreamy, indolent, greedy and dedicated. You may also be fearful, unrealistic, evasive, passive, touchy, anxious, dependent, stubborn, lunatic, backward-looking, lazy, burdensome, impenetrable and a homebody.

Love in the masculine mode: for you, Sir, in love, you are tender, sensitive and quite loyal. You are influenced by a mother-figure and you unconsciously look for a partner who will offer as much attention and affection as you used to receive as a child. You are a homebody and a dreamer and you blossom in the family cocoon you create, dreaming of adventures and extraordinary trips... that you most often take in your head.

Tenderness is more important than sexuality, even though it is also an agent for security and for stability. You tremendously appreciate to be again the spoiled child that you used to be, as you savour tasty little dishes or as you receive the frequent praises you need in order to feel reassured.

You are sheltered from tragedies and life complications because at the very moment when a difficult situation emerges, you nip it in the bud either by ignoring it or by withdrawing into your shell quietly, until the storm subsides.

Your home is happy and rich, quiet and harmonious, throughout your life.

## **Your Ascendant is in Virgo**

Psychologically speaking, your nature is nervous and secondary. Before you take action, you cautiously ponder over things and you review any possible alternative and reaction. You strive systematically to find the best possible response to any given problem. You are a perfectionist above all and you have no rest until you optimize a situation, in each and every area, be it professional, pragmatic, aesthetic or in pleasure. You do not accept spontaneity and, to fully enjoy life and go further, you consider that demanding the best is the least you can do, even though it is detrimental to the rough force associated with your instinct. The intellectual element intervenes before both the physical ones and your feelings: it is one of the essential clues to understanding your personality.

As you are born under this sign, you are cerebral, clear-sighted, focused on details and on numbers, analytic, serious, competent, reasonable, modest, tidy, organized, spruce, industrious, provident, honest, loyal, reserved, shy, helpful, willing to progress, talkative, perfectionist, logical, hardworking, tactful, patient, precise, concrete, spiritual. You can also be narrow-minded, calculating, irritating, petty, pernickety, hung up, anxious, cold, repressed or sarcastic.

In love, Sir, your inner self is different from what you seem to be: you are sensual and affectionate and you find it hard to show it because your nature is to be cautious, reserved and analytical. You think too

much, which gives you a cold and distant look. However, it is a mask that you wear and take around with you. As soon as you feel in confidence, you become able to take off the mask and to reveal your true face. You are critical and perfectionist and you must be cautious enough to keep your comments to yourself, especially in this particular area.

In the fields of sex and affection, real confidence is an imperative pre-requisite. Otherwise, it is impossible for you to show your true self and to remove the mental screen that proves so efficient in other areas, but that is very burdensome and inhibiting in the private sphere.

When you manage to do so, you become a charming, sensual and endearing partner and you communicate easily thanks to Mercury who rules your sign.

You are loyal, organized, conformist, more suited for celibacy. But once you take your decision, you are quiet and tidy and you will bring up your children according to the best traditional principles.

Because Virgo is a dual sign, there may be two marriages, or there may be a love affair in parallel.

### **The ruler of your chart is in Leo**

The ruler of the Ascendant, also referred to as the chart ruler, brings a few interesting nuances to the meanings provided by the Sun and the Ascendant. The sign in which the ruler of the Ascendant is posited fine-tunes the style of personality described by the Sun and the Ascendant. It may strengthen it if the sign is identical to either of them.

The ruler of the Ascendant, Kevin Hart, is Mercury. In the sign of Leo, it may endow you with authority and a certain inclination for prestige. Generous and noble, you loathe pettiness. You are not aware that you sometimes irritate the members of your entourage because of your excessive pride or your self-centredness.

### **Aspects to your Ascendant**

Several planets form an aspect with your Ascendant, Kevin Hart. Therefore, in their specific way, they modify your behaviour and your personality, which do not take on the pure characteristics of your Virgo Ascendant only, but which are a blend of its characteristics with those of the said aspects.

#### **★★★★★ Saturn conjunction Ascendant, orb 2° 04'**

Saturn is in conjunction with your Ascendant, Kevin Hart. In general, this aspect endows you with a responsible and serious behaviour, sometimes even imbued with solemnity. This configuration brings about a cautious and thoughtful side, may be to the detriment of spontaneity. With this conjunction, you appreciate being in control rather than indulging in laid-back attitudes, although it might imply being carried away into unknown territories, which you definitely are wary of.

#### **★★★★★ Mars square Ascendant, orb 0° 17'**

When Mars is in dissonance with the Ascendant, Kevin Hart, in some particular circumstances, it may translate into hastiness, and even hostility on your part, which your entourage may not understand. You have audacity galore, but it is up to you to show alertness, so that you don't come across as a short-tempered person unable of self-control.

★☆☆☆☆ Moon square Ascendant, orb -7'

Sometimes, Kevin Hart, your sensitivity clashes with the image you want to project. As a result, you may feel vulnerable and suffer if you let yourself be disheartened. Try to put things into perspective and to confront your emotions without fearing your external image. This is how you can compensate for this minor dissonance between the Moon and your Ascendant.

★☆☆☆☆ Sun sextile Ascendant, orb -6° 1'

Your will is fuelled by a strong energy, Kevin Hart. It enables you to take quick decisions which totally match your personal ethics. Thanks to this good harmony between the Sun and your Ascendant, you feel rather good about yourself, and your inner self perfectly matches the image you are willing to show!



## Your Sensitivity

Your nature is optimistic and emotional, Kevin Hart, and you are caught up in two incompatible longings: you are fond of exoticism and independence of movement, but at the same time, you feel comfortable in a form of middle-class attitude and conformism; in general, it translates into a succession of moods, now quiet and well adapted to the situations you experience, now marked by an irresistible desire for change and revival. You have a good and naïve nature, with a lot of self-confidence. Your emotionalism prompts you to live intensely a variety of numerous emotional experiences, a bit scattered, but with all the stimulations you need to be a balanced person. Your pleasant and welcoming attitude wins you some degree of popularity, all the more so because, despite your thirst for adventures that may scare away some people, you adjust to your environment's customs so easily.

Lively, even restless sometimes, Kevin Hart, your thoughts are roaming, prolific, fluctuating: you are interested in many things and your “Jack of all trades” side is part of your charm, even if you have difficulties in concentrating and completing what you start.

Your emotions are particularly active during your contacts and your frequent travels. You almost chat too much sometimes, mixing practical and affective matters, often changing your mind. However, you are very intuitive when it comes to instantly grasp the personality of the person you are dealing with. If you are a journalist or a writer, you probably have chosen the best direction for you! Relations with females are usually favoured, or at least, they are numerous and intense.

### ★★★★★ Moon opposite Mars, orb -6° 42'

The Moon-Mars dissonance suggests touchiness and sometimes, aggressiveness. You are irascible and very sensitive to all sorts of threats and dangers. You react very quickly, too hastily. To protect your well being, you must learn to control your mood, to coordinate your actions and to balance your opinions. You are often disturbed by plain facts: Either you seek refuge in your intimate realm and refuse to face the truth or, on the contrary, you are engaged in altercations, which forbid all tranquillity. It is important that you balance these two tendencies and that you alternate moments of action with phases of carelessness and relaxation. These two attitudes are relatively irreconcilable.

### ★★★★★ Moon inconjunction Venus, orb 0° 28'

With this Moon-Venus aspect, passion and sensuality may often upset your well being and your tranquillity. Your way of loving is dual. You either accept life simple joys, or you live through intense emotions and consuming fevers. It is difficult for you to reconcile your daily life with your affective or sensual desire. Habits kill passion, whereas passion forbids the carelessness that is yet indispensable for your fulfilment. This aspect suggests the traditional mother/woman and father/lover antagonisms that are incompatible although it is possible to experience them alternately. It is important that you balance these antinomial desires: you may let the turmoil of your heart break the monotony of an amorous life devoid of excitement but it does not mean that you must forsake the reassuring values of a couple, or family cell, where you can rest at will and give free rein to your intimate behaviour. You may indulge yourself but don't forget that you must deserve love.

### ★★★★★ Moon semi-square Pluto, orb -0° 42'

This planetary configuration causes distrust (Plutonian distance) towards individuals, groups, or your own family environment (lunar values). It may bring about a feeling of affective or relational wound. The feeling of security is absent, or fragmented or illusive. How is it possible to feel integrated whereas you know that you are different and on your own? It is the myth of the « ugly duckling », with its different

specific characteristics, an alien to its origins and its roots. It is important that you accept your differences and that you have them accepted by others, without forsaking your essential values. This is how you can exercise your group ownership without allowing them to exclude you or to repress your secret determinations. When this aspect is well integrated, it is a factor of lucidity for your emotions. You perceive without gullibility what is really at stake in your intimate relationships and the flaws of your environment. The fact that you do not readily trust people spares you many traps and delusions.

#### ★★★★★ Sun sesqui-quadrant Moon, orb 1° 48'

In your chart, two polarities are clearly opposing - or complementing - each other: on the one hand, solar values, the image you project and the models you follow. On the other hand, lunar values, moments of letting-go and well being through casualness. When you commit yourself in a project, it is often to the detriment of your peace of mind. Conversely, you completely feel that you are your true self only when you are no more under the scrutiny of the outside world. Therefore, you separate your social and professional activities from your private life and you seldom match the requirements of the former with those of the latter. It may be a hurdle, a fundamental anxiety. It may also be an obvious asset, when it is well integrated: in that case, you succeed in assigning to yourself, and in fulfilling, objectives that are not necessarily in line with your intimate natural demands, which are preserved and separated from your intentions, your ambitions and your expectations. Thus, a strong will can turn this Sun-Moon hard aspect into a rich instrument for creativity. A shadow zone, or uncertainty, still remains: on the affective plane, you are very sensitive. May be too much, to the extent that you become vulnerable in many circumstances. Because in different periods of your life, your landmarks (solar) and your intimate balance (lunar) will be simultaneously challenged.

## Your Affectivity

In your chart, the Sun and Venus are both in Cancer. Your affectivity is mainly based on tenderness and mutual protection. There is nothing extreme in your concept of the ideal couple, which is but a mother cell in which feelings blossom smoothly. Cancer's realm is as withdrawn as it is subtle: you attach great value to dreams, to life gentleness and to peace... In theory, of course. In actuality, nothing can ensure that your amorous life matches your ideal of quietness. More than anyone, you may suffer from affective tumults and storms. The Tradition clearly analyses this relative fragility: the zodiacal Sun-Venus duet in Cancer protects itself and isolates itself from the outside world. One of the striking facts of your affectivity is that you are very selective in your friendships and your desires. You are aware that your realm is vulnerable and you are particularly sensitive to the concept of prior agreement: love cannot be a continuous fight between two persons. But as soon as there is minimal natural harmony, better than anyone, you create an atmosphere of intimacy and tenderness that can nurture your relationship for a long time. Your beloved one is integrated, assimilated, to the extent that both of you form a whole. Cancer, a homebody,? No. But private, elitist and a person of habits, yes.

You are sensitive, vulnerable and tender at the same time, Kevin Hart. When you love, you give your entire affection and your partner may in all confidence rely on a long-lasting and reassuring relationship. You are so calm and so tender that you think that it is enough to win over your partner's heart, and you are often right. However, do not mix up giving and receiving. You so deeply need to receive love in return that you may be too passive and in the long run, as you become demanding, you may show immaturity. Security and sustainability in your relationship are of utmost importance. Your family also is important, it is the refuge, even the sanctuary, where you like you hide when things go awry. You also

dream of love, may be too much, and it may be detrimental to what might be concretely experienced if you were more dynamic or less fearful to get hurt. However, remember that you receive only as much as you give.

If there are no tense aspects with other planets in your chart, this configuration suggests that you are prone, Kevin Hart, to create a link between your career and the sentimental area, even though it may come under various guises: you may be in favour with women in general and enjoy their support as you climb the social ladder and you achieve success more quickly making use of your charm and of your seductive ability. Sometimes, you may mingle love and career (or marriage), thus combining business with pleasure and indeed even... with your destiny. In other cases, you will be interested in Venusian occupations such as the arts, aesthetics, decoration, luxury trade or diplomacy. Whatever your activity, you will appreciate it tremendously and you will feel very much at ease. You will enjoy affective popularity and consequently, an aura of the luck of the devil that can propel you to the top or, at least, to where you dream of being. You are often a perfectionist and the careful zeal you dedicate to the attainment of your objectives greatly contributes to their achievement. Never do you forget them, and nothing pleases you more than to rub shoulders with important people in the higher spheres of diplomacy, politics or business. You love to act as the mediator or the go-between and to have your irresistible charm duly acknowledged and rewarded. According to the Tradition, Venus in the 10th house often indicates that men are strongly attached to their mother and this tie favourably influences their destiny. In some adverse circumstances, you may lack constancy or perseverance in love, or this area may, to some extent, contradict your career objectives, owing to your carelessness. You may be dominated by women, lack authority or you may find yourself doing a balancing act between your love life and your professional life, and being unable to make a choice, thus damaging both.

★★★★★ Venus sesqui-quadrate Uranus, orb 1° 49'

Your sentimental life is adventurous: you prefer Bohemia to the comfort of a quiet but shaky love affair. You are a hard-liner and you think that love should be genuine or it should not be at all! You have difficulties in resisting your heart impulses and untimely passions that may challenge your affectivity. You need air, freedom and a relative independence. You also need to fully experience your love impulses, regardless of the price to be paid. The heart has its own reasons that no rules can hamper... The obvious danger may be to cause dramatic hurly-burly. Your inflexibility on the affective plane does not favour a quiet life where « one makes do with very little ». You are the all or nothing type. But does the absolute really belong to our world?

## The Way You Take Action and Your Sexuality

Kevin Hart, your mental activity is exuberant. Ideas are buzzing at high speed and you have the ability to think of several different things and to simultaneously process them. You are less interested in actions on the concrete or physical plane, because once you “see” a solution, its implementation is not that important any more since the crucial thing is that your mind remains bubbling with excitement. You are cerebral and curious and your sexuality is filled with fantasies, where pleasant ideas are mixed up with amplifying and enriching desires. Therefore, you are not simple but if your partner follows you, the stake is really worth it. Verbal jousting, the pleasure to debate and to discuss are continuous, with you. The only danger is to irritate people who may not have your swiftness or your sense of humour.

Your energy and your capacity for action are at the service of your career and your destiny, Kevin Hart :

No doubt, this is one of the simplest and most transparent planetary configurations. You do not hesitate. For you, action means climbing up the social ladder, sooner or later, winning the marshal's baton, defeating setbacks through efforts and work, and overcoming the obstacles on your path.

You get your reward by the sweat of your brow, and you are aware that it is no easy business. Your personal approach is that nothing can be achieved without an effort because you are wise enough to be aware of it.

It is so deeply rooted in you that you may feel that you will get nothing if you do not fight for it. You are right, actually, at least as far as you are concerned, because it is your manner. Your destiny implies many struggles, and you have the necessary courage to join battle. However, as time unfolds, try to be gentle with yourself and indulge in a few moments of well-deserved rest and respite!

★★★★★ Mars square Saturn, orb 2° 21'

Why should you take action? And how? The surrounding world is not to be trusted. Past events have taught you to question simple situations and to intervene after thorough consideration. You are vulnerable to the traps of life, to confrontations and struggles. You may complicate your behaviour at will, often missing your target due to your self-censoring. Your interventions may lack spontaneity. You must overcome your doubts and acquire the certainty that you are able to handle realities and facts. If you make that effort, you can understand that there are many ways to make life simpler for yourself.

★★★★★ Mars sextile Jupiter, orb 4° 28'

Coordinated action wins over almost all obstacles! You mobilize your energy and your fighting spirit advisedly and you take timely action. This is the reason why you are efficient in situations requiring courage, determination, swift responses and diplomacy, altogether. You do not fear confrontations but you never provoke them unnecessarily. You take advantage of your chances and you adjust your behaviour to concrete situations. You empirically handle events with relevance. The only danger is that you may be overzealous to seize any opportunity... even those that are not necessarily good in the long run. You should take the time to carefully consider the facts and their consequences. The swiftness of your reactions must remain an asset.

## Your Intellect and Your Communication Style

Your intellectual and nervous energy is considerable, Kevin Hart, with good concentration abilities and a strong determination. You have plenty of planning and organization skills and enthusiasm. Your helpfulness is deep and you never hesitate to solve other people's problems. You are thought of as a reliable person and you enjoy it very much. You believe in your own capacities and you tend to speak with a dramatic pomposity because you want to attract attention. People who do not share your opinion are in trouble! Your determination is strongest and you may show stubbornness and inflexibility because you do not easily accept it when your ideas or your actions are criticized. Some people believe that you assert yourself in an authoritarian and condescending way, but you are not aware of it and therefore, you keep on thinking that you are right.

Your thoughts remain often secretive, Kevin Hart, and you communicate in a discreet and sober way. The reasons may be your upbringing or your temperament. Actually, you may be interested in noble and compassionate goals, and of course, you don't advertise them.



Your strength lies in your steady concentration and your adaptability to ordeals. You are quite mysterious, interested in humanitarian issues. Your intellectual vision is strangely tinted with some form of mysticism and individual withdrawal.

Let's say that you enjoy communication and thinking, although you don't want others to notice it. The power behind the throne, somehow.

★★★★★ Mercury conjunction Jupiter, orb 2° 16'

You display strong abilities for adaptation, social insertion and various learning capacities. You are credited with an acute sense of relations, probably because you can speak other people's language. You easily assimilate the most varied settings and your qualities are acknowledged. Your attitude and the words you use have the power to seduce and to convince your entourage. Diplomacy is an asset in your game. You are fit for negotiation and you seek compromise solutions. The only danger may be that sometimes, you too readily accept agreements that turn out to be less positive than foreseen, after a while. This is the other side of the coin for your exceptional flexibility and your unquestionable tact.

★★★★★ Mercury sextile Mars, orb 2° 11'

The harmonic Mercury-Mars aspect is the signature of a quick wit and an energetic character. You take decisions rapidly and you implement them straight away. You never accept stiff situations. You need to design, to take action, to fight to express your acute sense of relation: the world, the people, everything is of concern to you... You need to be involved in relationships and in dialogues. Your sharp retorts earn you a reputation of straightforwardness. On the relations' area, your quick wit and your mobility are greatly appreciated. You find the allies and partners you need at the right time. An art of resourcefulness that is precious...

★★★★★ Mercury semi-sextile Saturn, orb 0° 1'

Your vision of the world is rigorous and objective. An exemplary logic characterizes your mental attitude and your human relations. Your discerning faculties overlook no detail. You need to know the whys of your life and to explore the backstage of your surrounding world. The deepness of your relations dismisses superficial connections. It may be the reason why your interest is aroused when you are in touch with elements that are alien to your mode of functioning. You have the soul of a researcher, regardless of the form that your investigations may take. It may be an exacerbated curiosity for human topics or a will to understand relationship stakes. It may also be a hobby or a course of study that introduces you to a riddle. It does not matter! Life is a perpetual quest for the unknown. Your critical mind is highly developed and you take commonplaces for granted only after thorough consideration.

★★★★★ Mercury square Uranus, orb 7° 27'

You are the champion for useless intellectual speculations, for crazy and revolutionary ideas. This Mercury-Uranus dissonance is the signature for an eccentric character, more ready to ridicule generally accepted ideas than to build up stable patterns. Your sense of humour reveals a critical and forceful mind. You can stand for an idea in the face of all opposition but you do not hesitate to support the opposite thesis the day after... with the same conviction. The coherence of your points of view is harmed by these spectacular reversals that constitute your speciality. In the relationship area, you may also provoke dramatic turns of events if your ideas are conflicted. The good news is that it seems difficult to convince you to accept points of view running counter to your principles. Intransigence also has its virtues.



# Your Goals, Motivations, Career, and Destiny

## Your Sun is posited in the 11th House

You definitely are a good soul, Kevin Hart: above all, you like to assert yourself by means of friendship, the true one, that is deep and warm; nothing is more rewarding than to be accepted and loved by your friends and by the persons you select.

Collective activities are the source of great satisfactions and it is through contacts and regular acquaintance with your colleagues that you are able to give of your best: your sincere desire to forge strong friendship bonds while implementing your activities, (not necessarily of a professional nature), contributes to positively increase your charisma and even, to make you stand out prominently as a person at the same time benevolent and unselfish.

People are not reluctant to offer their valuable help. They are not fearful because they feel that you are a person who is not looking for any kind of power or domination but who only wants to earn their sympathy without reservation.

Supports and protections from higher-ups are repeatedly granted to you, and not in parsimonious ways. They help you to successfully implement your different projects, preferably within an affectionate and warm entourage; indeed, isolation does not suit you because you would feel that your efforts serve no purpose; your need for recognition and your thirst for warmth are very strong and you cannot spend too much time striving in solitude.

You are idealistic and very sociable. Teamwork, participation in humanitarian and artistic projects or works of public interest, are perfectly suitable.

Rivalries and squabbles may affect friendly relationships that you thought to be so steady and strong: it is obvious that it is impossible to make everyone happy. In such occasions, don't get into a terrible state about it. Your nature is so loving, simple and pleasant that you will quickly find elsewhere more loyal and reliable friends who will make you forget your few disappointments.

## The ruler of your chart is in the 12th House

The ruler of the Ascendant, also referred to as the chart ruler as explained in a previous chapter, is also posited in one of the twelve Houses of the chart. Just like the Sun in his House, the ruler of the Ascendant provides certain abilities, or it makes you appreciate more keenly certain areas of life.

The ruler of your chart is in the 12th House, Kevin Hart. Your private and inner life is of utmost importance to you. "To have a happy life, live unexposed" is a proverb that you can apply to yourself. You are particularly fond of quietness, and sometimes even of solitude. You steer clear of agitation and hubbub, and you prefer to dedicate yourself to values you deem essential, without making any noise.

## Aspects influencing your ambitions

Regarding your destiny or your career, the following aspects of your natal chart allow to fine-tune what has just been said above:

### ★★★★★ Mars conjunction Midheaven, orb 3° 23'

Your dynamism and your capacity for action work wonders and serve your interests, thanks to the conjunction of Mars with your Midheaven, Kevin Hart. You undoubtedly have strong courage and fighting spirit, which enables you to achieve your professional goals, or your career progression, even though they imply struggles. More often than not, you triumph. As the French saying goes, "We triumph without glory when we conquer without danger"... Nevertheless, do not be too reckless. There is also a possibility that your profession is related to activities symbolised by Mars, such as the police, fire-fighting, surgery, metallurgy, the military, butchery, competition sports, etc.

### ★★★★★ Moon opposite Midheaven, orb -3° 19'

The Moon in opposition to your MC does not create a real dissonance in your natal chart, Kevin Hart. Actually, the Moon is also in conjunction with your Imum Coeli which represents your roots, your family, and your home. In fact, you take pleasure in letting yourself go when you are with your entourage, in the privacy of your home, rather than in society, where you keep your guard on, for fear of criticisms. Thus, your emotions are not at the service of your career, but rather exclusively dedicated to your family circle.

### ★★★★★ Sun square Pluto, orb 2° 31'

You are dealing with both sides of the coin. People are mistaken when they think that they know you well, because the image you project does not necessarily depict what you really are. You may look like any given model, whereas you actually consider social values to be empty and childish. Deep down, you are an anti-establishment person and you do not belong to the world and its laws. Or, on the contrary, you may project a more marginalized image and make it a point of honour to literally stick to your aspirations' ethics. You do not know who you are really, and where you stand. You may choose some sort of marginality, the adherence to another realm and a different scale of values. Unless you choose a life that apparently lives up to the expectations of others. In that case, you preserve a corner for your private secrets, with no norms, no fashion concerns, relationships off the beaten tracks, passions very removed from conventions. Your attitudes may seem paradoxical as you shift from commitment to refusal and from involvement to withdrawal.

### ★★★★★ Sun trine Uranus, orb 3° 09'

This aspect reinforces the determination as well as the will to further your original, sometimes revolutionary, ideas and designs. Your capacity of innovation is important for your image. You have the soul of a leader. You display a forceful and synthesizing mind. You may tend to oversimplify or to schematize situations. In most cases, you know where you are heading to and how to reach your goals. Your determination is two-edged... not everybody will appreciate your contrasted standpoints. It is yes or no, black or white! This planetary configuration indicates certainties. When it comes to acting according to your inner motivations and to respecting your models, you can show an unusual willpower and sweep aside all obstacles lying on your path.

### ★★★★★ Saturn square Midheaven, orb 5° 44'

Saturn is in dissonance with your Midheaven, Kevin Hart. Of course, nothing really serious is to be feared. It is just that sometimes, you feel that an unfair slowness keeps on delaying the achievements you deem that you deserve right now. You must work twice as hard to climb up the rungs of success, and

above all, you must not get disheartened. Effort is one of the values you must work on, and it is a punishment by no means. It is obvious that your goals are achievable, but you must remain on the right track and show perseverance. That's all!

★★★★★ Sun sextile Saturn, orb  $-4^{\circ} 06'$

This aspect indicates a firm and discreet will, a rigorous and objective character. You are clear-sighted, particularly in difficult situations. You enjoy the moments of calm and solitude during which you can review your life at will. Your judgments are enduring and often extremist. You are outraged by injustice and inconsistency. When a problem arises, you do not take the easy way out with short-term solutions, on the contrary, you strive to solve the issue thoroughly. Better than anyone else, you challenge yourself, you review your choices and your attitudes. This is the reason why you are capable of handling crises and of overcoming any obstacle that requires an in-depth and relevant response. You may lack spontaneity but your behaviour reveals your wisdom. When you are facing an issue, you put forward the good question, to others, but also to yourself.

★★★★★ Mercury sextile Midheaven, orb  $5^{\circ} 34'$

Mercury in soft aspect to your Midheaven enables you to easily communicate with your entourage and to climb up the social ladder, Kevin Hart. Your strategy is often good, and you correctly think about your interests. Do not change anything!

## Your Assets and Your Part of Joviality

Your charisma, your natural authority, and your generosity are favoured with this position, Kevin Hart. The devil takes pettiness: you think big and generously. You have a natural propensity to look at things pleasantly, although it often means that you put yourself at the forefront. Children appreciate you, and people in general are sensitive to your charm. Even if the rest of your chart indicates introversion, this position highlights the warmth of your personality. So much to your credit! If you are extroverted, you must beware of the danger of vanity.

Although Nature's nudge in the right direction is not spectacular here, Kevin Hart, it is very real, nonetheless. Your sense of dedication, your generosity, and your compassion are developed to such an extent that they often enable you to happily find fulfilment in non-meditated areas such as humanitarian work and charities. Your human qualities are strongly favoured when you strive in obscurity, discretion and silence. Your reward is a life that is rich and not limited to material contingencies.

The planet Jupiter symbolizes expansion, broadness and generosity. Jupiter is associated with the functions of synthesis, enthusiasm and optimism. In your natal chart, his house position is more important than his sign position because, like Saturn, Uranus, Neptune and Pluto, he is a slow planet. Many people born in the same period have Jupiter in the same sign. This is the reason why the sign occupied here is less meaningful than when it is occupied by the so-called fast planets, i.e. the Sun, the Moon, Mercury, Venus and Mars. Therefore, some caution is to be exercised as you read what follows.

Jupiter in Leo gives you a strong inclination for luxury, arts, parties and shows: your nature is fond of leisure, preferably in noble, proud, even dramatic ways. You feel comfortable in the field of entertainment. You love children, laughter and splendour... Your creativity is often remarkable.

## Your Serious Side

Your concentration power and your control over your instincts increase as you mature. You become more methodical, analytical, and tidy, although you lose some degree of lightness and joviality.

Solemnity, seriousness and discipline are your keywords, Kevin Hart. It is difficult for you to relax, and it is most likely that at the beginning of your life, you are shy, quite introspective, and distant. You may be worried even though you have no reasons to do so. Your doubts may be overwhelming to the extent that they affect your vitality.

As time goes by, thanks to your strong will, your serious side becomes an asset for your success. You learn spontaneity, risk-taking, and lightness, and you are less concerned with the image you project because, in your heart of hearts, there already are hindsight, solemnity, and some sort of wisdom!

The planet Saturn symbolizes contraction, effort, time, limitation and concentration. Saturn eliminates anything that is not authentic, sooner or later. It is impossible to cheat him as he gives an irresistible desire to form a coherent whole with oneself, in responsible and wise ways. He is the great purifier. He represents our limitations but also our truth. In your natal chart, the house position where Saturn is posited is more important than his sign position because, like Jupiter, Uranus, Neptune and Pluto, he is a slow planet. Many people born in the same period have Saturn in the same sign. This is the reason why the sign occupied here is less meaningful than when it is occupied by the so-called fast planets, i.e. the Sun, the Moon, Mercury, Venus and Mars. Therefore, some caution is to be exercised as you read what follows.

Saturn in Virgo gives you a persevering and precise nature. This good combination increases your taste for sciences and for effort and you are constantly striving to improve yourself. Your tenacity works wonders.

## A Few Special Points

### Your Uniqueness and Your Utopias

Your mind is agile, curious and mobile, and always on the lookout for things that are out of the ordinary. This stems from your interest in strange or original concepts, or in non-conformist people.

Your trips are unforeseen and you are often present where no one expects you. The only problem is that you may shock your entourage, at least, the most conventional persons, because this aspect of your personality is undoubtedly quite endearing, provided that you do not exceed a certain level of eccentricity, whether in intensity or in volume!

### Your Inspiration and Your Illusions

Your vision of your childhood home, or of your father, is quite vague, but your emotions in these areas are intense. There is a vital need for you to feel comfortable at home because, otherwise, you tend to imagine horrors that exist only in your mind!

You may encounter complications, lack of understanding, or mystery regarding your origins or your real

estate. In any case, it is hard for you to discern when you are "at home" and, even when all is well, you tend to idealize your household.

## **Your Passion and Your Authority**

This configuration may equally indicate an extreme greed for material gains or, on the contrary, a complete lack of interest in them. Your relationship to money may be secretive and obsessive.

You may earn huge amounts of money, with stubbornness and harshness, in a concealed but actual way, or in the darkness of risky speculations; in all cases, your attitude towards your earnings is... passionate, although you do not acknowledge it. The danger is that you may lose a lot. However, it is only when one is prepared to lose that one has a chance to gain a lot, and you certainly know it.

On a more symbolical plane, your sensuality and your possessiveness may be particularly strong. It is advisable that you step back, in order to become able to retain only the best of this configuration.

## **Your Isolated Planets**

In general, the ten planets of the chart are connected to other planets by major or minor astrological aspects. It is owing to those ties that the planets' energies can manifest in the chart owner's personality and play out within safeguards according to a specific tonality.

It seldom happens that in a natal chart, a planet is totally disconnected from the nine other planets.

Astrologers have observed that when such a case occurs, the person feels the energy of the unaspected planet in quite a singular way, very jerky and powerful at the same time. Thus, for instance, the famed astrologer Jean-Baptiste Morin de Villefranche wrote that "an unaspected planet heralds that something strange or extraordinary will take place regarding the meanings of the house in which the said planet is posited" (source : l'astrologie selon Morin).

Rules for detecting an unaspected planet: among all the testimonies that we have reviewed to this day, based on our experience, we tend to agree with American astrologer Janis Huntley who accepts seven aspects, which involve the zodiacal twelve sections of 30 degrees. The aspects to be considered are the conjunction (0 degree, cooperation or tension), the semi-sextile (30 degrees), the sextile and the trine (60 and 120 degrees respectively, aspects of cooperation), the square and the opposition (90 and 180 degrees respectively, tensed aspects), and the quincunx (150 degrees, slightly tensed). In this detection, the chart's angles are not taken into account.

In any case, it is important to remember that an isolated planet clearly expresses its influence when it is a personal planet. Thus, when the Sun, the Moon, Mercury, Venus, or Mars is isolated, it is certain that the effects described by Jean-Baptiste Morin de Villefranche will become manifest. As for Jupiter, Saturn, Uranus, Neptune, and Pluto, one must be cautious because the volume of cases documented is not yet large enough.

Your chart has no isolated planet, and this particular case does not apply to you.



## Annex 1: Your Minor Dominants

The five following dominants are less significant than those described at the beginning of your report. They may not be strongly felt. In some cases, they add several minor details to the analysis of your character, but they are rather for curiosity purposes. It is not necessary to take them into account when you first read your portrait.

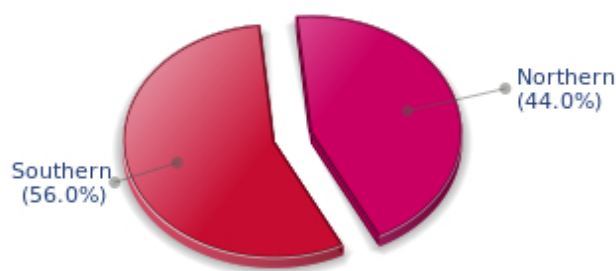
### Your Planetary Repartitions: Northern, Southern, Eastern and Western Hemispheres

The axis linking the 1st house's cuspide (the Ascendant) to the 7th house's cuspide - the Descendant - divides the zodiac into two bowls, a superior bowl, in the South, and an inferior bowl in the North. Quoting an expression by the famous American astrologer Rudhyar, the Southern part and the Northern part correspond to two functions: "being" and "doing". Other concepts are also associated with this North and South distribution, such as introversion - Northern hemisphere - and extraversion - Southern hemisphere - being or appearances, inner life or external life, reflection or action, dreaming one's life or living one's dreams, the abstract or the concrete, backstage or limelight.

This is not about determination but about personal inclination: thus, some people will be thrown into public life despite a prominent Northern hemisphere. If this happens, however, it will not be due to their will, their taste or their deep nature. Conversely, a prominent Southern hemisphere will not bring about a famous destiny to its owner, even if he tends to turn the spotlight on himself, or if he looks for a more active life. It is a matter of deep nature and natural inclination. Of course, none of the typologies is "superior" to another.

In your birth chart, Kevin Hart, the ten main planets are distributed as follows:

### Your Northern and Southern Hemispheres



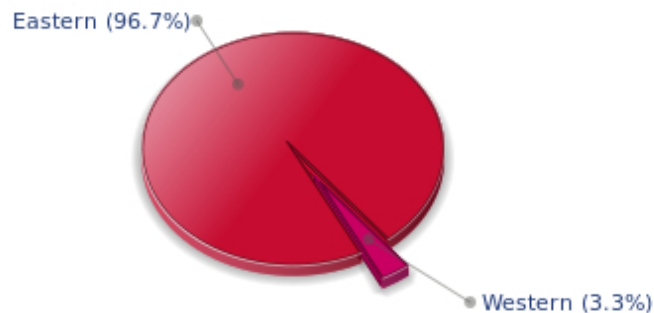
Kevin Hart, the planetary elements of your chart are well balanced between the North and South hemispheres. As a result, your public destiny and your inner life are harmonious, and there is no conflict between your actions and your thoughts. Your private and public spheres coexist in harmony and naturally match your temperament.

The birth chart is divided into two other parts, Eastern and Western, by the axis linking the Midheaven to the Imum Coeli.

The Eastern part, on the Ascendant side, shows the person's ego, will, magnetism, and vitality, whereas the Western part, on the Descendant side, symbolizes other people, communication, relationships and their influence, as well as flexibility and adaptability.

Kevin Hart, here is the planetary repartition in your Eastern and your Western hemispheres:

### Your Eastern and Western Hemisphere:



The predominance of planets in the Eastern hemisphere of your chart enables you, Kevin Hart, to assert yourself and to rely on your determination: you know what you want and you have a tendency to take action and to decide with your personal goals as priorities, even if they can be in contradiction with what others think.

A definite asset... provided that you never make mistakes in your choices. You should pay more attention to your entourage in order to counterbalance your nature and to take advantage of your assets wisely. The danger is that you may be too authoritarian and not conciliating enough. Strong determination coupled with flexibility and acute sense of communication are qualities you should develop.

### Your Yin and Yang Polarity

The twelve signs are divided into two polarities, called active or passive, or sometimes masculine and feminine, positive and negative, Yang and Yin. This classification corresponds to two quite distinct tonalities, the first one bringing extraversion, action, self-confidence and dynamism, the second one, introversion, reactivity, reflection and caution. None is superior to the other, each group has its own assets and shortcomings. Odd signs - Aries, Gemini, Leo, Libra, Sagittarius and Aquarius - belong to the first group, whereas even signs - Taurus, Cancer, Virgo, Scorpio, Capricorn and Pisces - belong to the second group.

## Your Yin and Yang Polarity



According to the disposition and qualities of your planets and angles, you are rather influenced by Yang energy, the active polarity, Kevin Hart: more concerned about actions than reflection, you sometimes rush without standing back and without the deepness that is needed. However, your spontaneity prompts you to take fresh starts, even after repeated failures caused by your rashness.

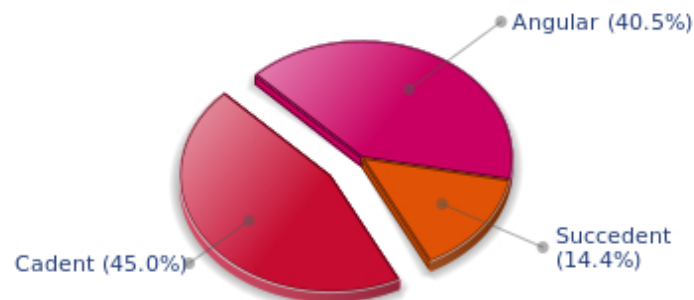
### Your Houses' Accentuations

Houses are split up into three groups: angular, succedent and cadent.

The first ones are the most important ones, the most "noticeable" and energetic houses. They are the 1st, 4th, 7th and 10th houses. Their cusps correspond to four famous angles: Ascendant for the 1st house, Imum Coeli for the 4th house, Descendant, opposite the Ascendant, for the 7th house and Midheaven for the 10th house, opposite the Imum Coeli.

Planets are evaluated according to a whole set of criteria that includes comprehensive Western astrology rules. At their turn, planets emphasize specific types of houses, signs, repartitions etc., as previously explained.

## Your Houses' Accentuations



Cadent houses, namely the 3rd, 6th, 9th and 12th houses, are very emphasized in your chart, Kevin Hart.

They indicate important potential for communication, adaptability and flexibility. These houses are symbolically linked to the mind and intellect. The relative weakness implied by these characteristics indicates your tendency to hesitate or to be indecisive, but also your remarkable ability to start off again, which is a nice quality, finally: you can easily get yourself out of a tight spot thanks to your mobility and casualness, in the best sense of the term. This group of houses corresponds to evolutionary characteristics of your personality. However, they are only indications and you must include them in the rest of your chart in order to see whether they are validated or not!

### Your Esoteric Decanates

Each sign contains 30 degrees and can be divided into three equal parts: the decanates. The Tradition indicates that specific meanings can be associated to each of the three decanates. Their sphere of activity is usually limited to the Sun sign, however, it is even more interesting to observe the distribution of all the planets in the chart to get an idea of the respective importance of the three decanates, which can complement the description of the personality.

These meanings must be considered with the greatest caution. Indeed, they are minor characteristics that can only underline other outstanding traits of character.

Traditionally, the first decanate highlights the characteristics of the sign where a planet is located. The two other decanates correspond to sub-dominant planets, depending on the nature of each sign. This system leads to a multiplication of meanings and it is impossible to have a clear understanding: here, we prefer to give only the meaning of one decanate in comparison with the other two, within the birth chart as a whole. Again, the greatest caution is needed with regard to this minor indication as it is not always reliable: it is not essential that you read these texts in the beginning. You can get back to them later on, once you have read more important interpretations

### Your Esoteric Decanates



The first decanate, which means the part between 0° and 10° of any zodiacal sign, prevails in your natal chart, Kevin Hart: this decanate is traditionally linked to vitality and physical constitution, and may indicate that you efficiently express your concrete energy on the material and sensual planes.

## Annex 2: Karmic Study

The karmic theme is a good complement to the psychological portrait, or natal chart. This analysis is based on the positions of the Lunar Nodes, the Black Moon and the Part of Fortune: they are also called fictitious points and describe the spiritual purpose of your destiny. Because there is in all of us an experience and a quest, our life is an evolutionary journey... provided that we head towards the right direction, of course! Indian astrologers highly prize the Nodes axis (North Node and South Node). It is the Ariadne's thread that we are invited to follow. The Black Moon indicates the sector where we are most likely to transform or to transcend, whereas the Part of Fortune points out the area where we can easily express our specificity.

### The Lunar Nodes: a spiritual path

Lunar Nodes have their roots in the Indian tradition and they are based on a simple concept: each of us have a mission of their own, here on earth, a destiny, a course. According to the Indian philosophy, life is a school: the nodal axis describes our past experiences (South Node, our karma, our spiritual inheritance or our previous lives), and our aims on earth (North Node, our Dharma, the purpose of our current incarnation). This is the reason why the study of the lunar nodes is called "Karmic astrology". Here, we shall not step into hypothetical past lives. Wherever our current trends may come from, all that really matters is that we become aware of the purpose of our life, its finality and our dharma. We are likely to understand our life purpose around the age of 37, when the Lunar Nodes return to their natal position.

A part of you is bohemian: you may shirk realities (at least during the first years of adulthood) and you keep your distance from the constraints of this world! However, life reminds you of them... As years go by, you show more pragmatism. Of course, you must keep your assets: a sharp intuition of people and things, a profitable detachment that allows you to cope with daily petty things. But you must also control the vagaries of life that may fall into the bad side of a "bohemian life" if you are not careful. The consequences may be setbacks and delusions that will cease only when you become aware of realities. As you progress, you may be a therapist who heals the body (a medical occupation)... or the soul because you are altruistic and you know how to listen.

You have obvious sociability qualities. You know better than others how to adjust to a new context and to copy your entourage's behaviour exactly. You do not dissociate yourself from groups or cells (social, family), on the contrary, you frequently adopt flexible attitudes that meet other people's expectations. This may translate into a lack of fighting spirit. You may not dare to go against prevailing fashions and currents. Because you dread unknown situations, you may miss the opportunity to innovate. It is important that you learn to go it alone and to get rid of scruples that hamper your doings: life encourages you to leave aside other people's opinions and, as time goes by, to find your autonomy of thought and action. While keeping your sociable nature, it is important that you develop a sense of individual initiative. In many situations, one can only rely on oneself. In such cases, you have the possibility to achieve the freedom many people dream of, without really giving themselves the means to implement it. Do not allow your entourage to dictate your way of life, over and over again. However, do not fall into the opposite excess: the frenzied individualism of those who value nothing except their own interest! Your life's purpose may be to master your destiny.

### Lilith or the Dark Moon

The Black Moon is the spark of refusal and distance that is dormant in all of us. Depending on the sign where she is found in your chart, she highlights the desire to transform and to sublimate a part of your



life. The Black Moon is unfathomable and mysterious. She gives a different dimension to the sector she touches. Her manifestations are subtle; nonetheless, she is powerful, implacable, demanding to the extreme... The Black Moon is also called Lilith. She is the inner flame of your heroism and insubordination.

One of the main drives of your life is your rejection of mediocrity: the intention is commendable although it is two-edged. You attach so much importance to charisma that you may reject a person whom you deem – wrongly – unworthy of your esteem! If you avoid this trap, the requirements that you demand from yourself as well as from your close friends become an exceptional springboard for evolution.

The Black Moon here readily sacrifices the ties of this world to the essential: spiritual life and renunciation, fusion into an ideal. Your dreams are strange: life vagaries do not matter since your quest is internal. In the course of your progression, you may often show an unusual faculty of detachment. Although the reasons why you give up a given road for another one may not be always understood... though deep down, you know the reason why.

### **The Part of Fortune in House**

The Part of Fortune is a very ancient fictitious point that depends on the lunar phase at the time of birth. The astrological house tenanted is particularly strengthened. In your chart, the Part of Fortune is in the 5th house: to you, success means to create, to produce a fruit or a work, or to give birth to a child. Being in this world does not content you; you need "to do", to design, to live hand-to-hand with your surroundings. You are sensitive to power and you want to arouse esteem and admiration in your entourage.

### **Retrograde Planets**

The karmic tradition insists on the issues related to the so-called retrograde planets. They are considered to be the inheritance of a past that was not well experienced, a sort of unfinished business. The interpretations of the retrogradation may seem negative or excessive to you. However, you may relate to a scenario that you have often and repeatedly experienced... as if you underwent several setbacks that all have the same cause. Until the day you become aware of it and you can free yourself from it! Through the slow integration of these planetary energies, you will be able to overcome your difficulties and to pay your karmic debt. Actually, each retrograde planet highlights an opportunity for evolution. Nothing can be achieved without the will to grow spiritually and to defeat your own demons.

Uranus was retrograding on the day of your birth: you have the soul of a rebel and your behaviour may often be tyrannical or extremist. Your manner has brought you setbacks. You lack the flexibility that spares you the pain of forcing your ways through events. The danger may be that you get trapped into rigid patterns and into personal logics incompatible with others'. This is precisely what your life's lesson is about: as years go by, your judgments are more qualified and your attitudes become less cut-and-dried, less stubborn. You must lose the essentially individualistic character of your childhood and be more open to other people's ideas and problems. In other words, a path of love. Without losing your remarkable resolution, you must practice some form of renunciation and be sensitive to various logics that constitute the wealth of your social life.

Neptune retrograding concerns spirituality. You may have expressed early in life a few reluctances about the subtle world of faith. You may have ignored destiny's signs and winks and you preferred to stick to

your certainties, to a rigorous and objective control of your life. You dread your own aspirations and you readily trust others': this causes a lack of autonomy and the feeling that you may not receive as much as you give. However, several delusions teach you that you must relativize your calculating and methodical attitude and open up to the irrationality of love in order to find an inner and more spiritual progression. Embracing the invisible is a process that unfolds as years and experiences go by. Your own generosity increases as you become aware of your entourage's generosity.

**N.B:** modern astrology attaches less and less importance to the principles of retrograding planets.

## Conclusion

A few remarks are needed here in order to allow you to fully take advantage of your astrological portrait: firstly, do not forget that a birth chart is also a photograph of the sky at birth and a structure that not only contains the personality's characteristics, but also its potential evolution.

We all know that, in real life, people begin to know themselves when they are in their forties, or even later. Likewise, several traits of character in a portrait may seem surprising: in most cases, it means that such features are not yet developed.

Some personalities reveal themselves late in life, whereas others are more precocious. It must be remembered that psychological structures are in a state of continuous evolution because they are influenced by unfolding events and gradual maturity. We can never underline strongly enough the "mobile" nature of the personality, throughout a lifetime.

On the other hand, it is difficult to discriminate what is "already present" at this moment in your life when you are reading your chart's interpretation, from what will appear later in the logic of your evolution: you must sort out all the pieces of information provided and, in most cases, you will see that your astrological portrait is helpful for your endeavours to know yourself better.

Finally, several readings of an astrological portrait are usually necessary in order to absorb all its different meanings and to evaluate the relevance of each character trait.

In any case, better self-knowledge obviously contributes to faster personal blossoming, and it is undoubtedly one of astrology's major roles: contributing to know oneself better, in order to improve more rapidly, to deal with one's weaknesses and to avoid its drawbacks, and to take advantage of one's assets as efficiently as possible.

---