



Joan Baez's Astrological Portrait





Joan Baez's Astrological Portrait



Introduction	2
Your Planets, Houses, Aspects, and Natal Chart	4
Preamble	7
Your Planetary Repartitions	8
Your Dominant Modes and Elements	9
Your Dominants: Planets, Signs and Houses	10
Your Style, Behaviour, and Peculiarities	15
Your Sensitivity	19
Your Affectivity	20
The Way You Take Action and Your Sexuality	22
Your Intellect and Your Communication Style	23
Your Goals, Motivations, Career, and Destiny	24
Your Assets and Your Part of Joviality	27
Your Serious Side	27
A Few Special Points	28
Your Isolated Planets	29
Annex 1: Your Minor Dominants	30
Annex 2: Karmic Study	34
Conclusion	36





Joan Baez's Astrological Portrait

Introduction

To fully benefit from this portrait, we suggest that you read its introduction and its preamble carefully, and then that to take the time to soak up the interpretations of each chapter. Given the large number of texts, which mirrors the human being's complexity, you may need to go through the contents several times, so as to get a good grasp of their meaning and to know yourself better. This will reward your patience.

The purpose of this report is to describe your psychological portrait and to highlight the most fundamental features on the personal area. The report begins with the analysis of your planetary dominants and outlines your personality's general traits before going into further detail. Minor dominants are analysed at the end of Annex 1, for purposes of clarity. Your report then delineates the various facets of your personality:

In general, even when relationships are not involved, we express ourselves and we feel according to our character and our personal motivations: this is indicated by the Ascendant and the Sun sign which both give details on the way we function. They shed a tremendously important light which allows to figure out your personality. Here, we describe your Sun sign (your inner self), your Ascendant (your behaviour as seen by others), and the ruler of the Ascendant (interesting additional pieces of information about the style of your personality). These descriptions alone cover nearly a third or a half of your psychological signature, depending on your natal chart characteristics.

Then, we address your sensitivity, or in other words, the way you receive things and how you express your emotions ; it works as a constant filter for all your exchanges, even when it becomes a more secondary element in your amorous relationship, because at that moment, affectivity prevails. Sensitivity is the way you perceive things, it is your radar, your daily mood, and at the same time, it indicates how you react to your entourage, on a daily basis. It is what others immediately see of you. In the second paragraph, we explain in which areas of life your sensitivity and your emotions are strongest, therefore, where you are most vulnerable.

After this, it is your affectivity, the way you love and how you charm, that comes into play as soon as you fall in love: the first part indicates its basic structure or its main form. The second part describes the areas where it is best expressed and how you display it, according to your personality.

A third fundamental area deals with your mode of action and your sexuality: how you behave, how you manage to obtain what you want, what kind of desires you have. There are twelve possibilities, very

different from one another. The study discloses the specific one that applies to you. In the second paragraph, we explain in which life areas you may most efficiently take advantage of your capacity for action and for conquest.

Your ways of communicating and of thinking are obviously among the major elements that must be integrated into the delineation and the description of your personality. Indeed, they influence your general behaviour and may modify or enhance the image your project (for instance, extraversion may “compensate” a weak affectivity, but a huge number of cases are possible). An additional chapter indicates the favourite areas where you enjoy communicating, thinking and meeting with people.

Besides, we analyze an even more personal aspect that is important to define and understand what may occur within your couple: each of us have a centre of interest, a privileged manner to be fulfilled or to achieve our destiny; this main motivation is indicated by the positions of your Sun and your chart ruler in the astrological houses and we provide you with its detailed description.

A natal chart contains the potential for specific fulfilment and a whole range of assets, protections and qualities. How does the lucky factor manifest in your personality? In which area can you best exploit your qualities? The answers are precisely revealed to you in this chapter.

On the other hand, we all feel in us a part of vulnerability, doubts and fears. How does this part of solemnity or serious side play out? How is it possible to handle it in order to evolve and to get rid of useless elements? All this information is provided to you in these two paragraphs.

Then, you can discover three additional traits of your personality that must be considered as secondary ones. They deal with your predispositions, which means that they need to be triggered by external events because they are not influenced by your will; let's call it a part of fate. Please, bear in mind that your destiny can unfold only in accordance with what you are: therefore, even if they belong to your more unconscious self, these characteristics are parts of you, definitely.

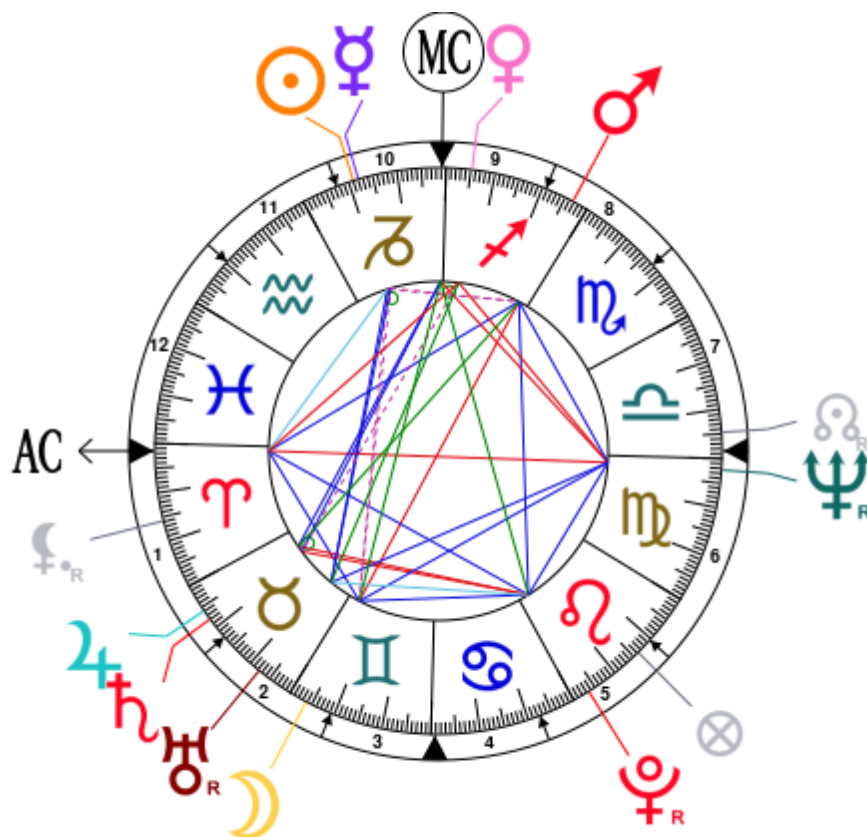
The karmic chart complements the psychological portrait or natal chart. It is based on the positions of the Lunar Nodes, the Black Moon, and the Part of Fortune. These elements of the chart, sometimes referred to as fictitious points, provide information about the spiritual meaning of your destiny. Owing to the fact that we all have in us acquired knowledge and the urge to go on a quest, our life is an evolutionary journey... However, these texts must be read with great caution: this is the reason why you will find this analysis in the Annex 2 of your report.

Your Planets, Houses, Aspects, and Natal Chart

Joan Baez, born January 9, 1941, at 10:45 AM, Staten Island (Richmond), New York [74.09W ; 40.35N ; 5W00]

Natal Planets				In House	Natal Houses (Placidus)		
☉ Sun	19°01'	♑ Capricorn		House 10	House 1	1°32'	♈ Aries
☾ Moon	3°45'	♊ Gemini		House 2	House 2	12°34'	♉ Taurus
☿ Mercury	17°56'	♑ Capricorn		House 10	House 3	9°16'	♊ Gemini
♀ Venus	24°43'	♐ Sagittarius		House 9	House 4	0°49'	♋ Cancer
♂ Mars	3°15'	♐ Sagittarius		House 8	House 5	22°29'	♋ Cancer
♃ Jupiter	5°50'	♉ Taurus		House 1	House 6	19°40'	♌ Leo
♄ Saturn	7°54'	♉ Taurus		House 1	House 7	1°32'	♎ Libra
♅ Uranus	22°20' R	♉ Taurus		House 2	House 8	12°34'	♏ Scorpio
♆ Neptune	27°40' R	♍ Virgo		House 6	House 9	9°16'	♐ Sagittarius
♇ Pluto	3°31' R	♌ Leo		House 5	House 10	0°49'	♑ Capricorn
♊ Node	5°19' R	♎ Libra		House 7	House 11	22°29'	♑ Capricorn
♎ Lilith	15°49' R	♈ Aries		House 1	House 12	19°40'	♒ Aquarius
AS AS	1°32'	♈ Aries					
MC MC	0°49'	♑ Capricorn					

In keeping with the common practice, we consider that a planet posited within 1 degree of the next house belongs to that house. We allow an orb of 2 degrees for the ASC and the MC.



List of Your Active Planetary Aspects

Please find below the list of all the active inter-aspects which are interpreted in this report, in addition to your planets in sign, in house, and all your planetary dominants. Since the aspects between slow-moving planets are of a collective nature, they are not displayed, in compliance with our interpretation rules.

- ★★★★★ Sun sesqui-quadrate Moon, orb -0° 16'
- ★★★★★ Sun conjunction Mercury, orb 1° 05'
- ★★★★★ Sun semi-square Mars, orb 0° 45'
- ★★★★★ Sun trine Uranus, orb 3° 18'
- ★★★★★ Sun quintile Ascendant, orb 0° 3'
- ★★★★★ Moon sesqui-quadrate Mercury, orb 0° 48'
- ★★★★★ Moon opposite Mars, orb -0° 29'
- ★★★★★ Moon trine Neptune, orb -6° 04'
- ★★★★★ Moon sextile Pluto, orb -0° 14'
- ★★★★★ Moon sextile Ascendant, orb 2° 12'
- ★★★★★ Moon inconjunction Midheaven, orb 2° 55'
- ★★★★★ Mercury semi-square Mars, orb -0° 19'
- ★★★★★ Mercury trine Uranus, orb 4° 24'
- ★★★★★ Venus sesqui-quadrate Saturn, orb -1° 48'
- ★★★★★ Venus inconjunction Uranus, orb -2° 22'
- ★★★★★ Venus square Neptune, orb -2° 57'
- ★★★★★ Venus square Ascendant, orb 6° 49'
- ★★★★★ Venus conjunction Midheaven, orb 6° 06'
- ★★★★★ Mars inconjunction Jupiter, orb 2° 34'
- ★★★★★ Mars sextile Neptune, orb 5° 35'
- ★★★★★ Mars trine Pluto, orb -0° 15'
- ★★★★★ Mars trine Ascendant, orb -1° 43'
- ★★★★★ Jupiter conjunction Saturn, orb 2° 03'
- ★★★★★ Jupiter trine Midheaven, orb 5° 01'
- ★★★★★ Saturn trine Midheaven, orb 7° 04'
- ★★★★★ Neptune opposite Ascendant, orb -3° 52'
- ★★★★★ Neptune square Midheaven, orb 3° 08'
- ★★★★★ Pluto trine Ascendant, orb 1° 58'
- ★★★★★ Pluto inconjunction Midheaven, orb -2° 41'

Meaning of Stars

Stars indicate the strength of the aspects. Two solid coloured stars (there are half-stars also), mean that the aspect is powerful enough to be noticed at the first reading.

We strongly advise that you read the paragraphs displaying less than two stars later on, after you have

absorbed the full import of the other texts.

The yellow colour indicates a soothing and conciliating aspect, and the red colour, a dynamic and tense aspect. The red aspects enable you to evolve, to take action, and to learn to turn your "weaknesses" into assets through your life experiences. The yellow aspects are innate strengths on which you rely in order to grow better with the former...

Preamble

When interpreting a natal chart, the best method is to start gradually from general features to specific ones. Thus, there is usually a plan to be followed, from the overall analysis of the chart and its structure, to the description of its different character traits.

In the first part, an overall analysis of the chart enables us to figure out the personality's main features and to emphasize several points that are confirmed or not in the detailed analysis: in any case, those general traits are taken into account. Human personality is an infinitely intricate entity and describing it is a complex task. Claiming to rapidly summarize it is illusory, although it does not mean that it is an impossible challenge. It is essential to read a natal chart several times in order to absorb all its different meanings and to grasp all this complexity. But the exercise is worthwhile.

In brief, a natal chart is composed of ten planets: two luminaries, the Sun and the Moon, three fast-moving or individual planets, Mercury, Venus and Mars, two slow-moving planets, Jupiter and Saturn, and three very slow-moving planets, Uranus, Neptune and Pluto. Additional secondary elements are: the Lunar Nodes, the Dark Moon or Lilith, Chiron and other minor objects. They are all posited on the Zodiac wheel consisting of twelve signs, from Aries to Pisces, and divided into twelve astrological houses.

The first step is to evaluate the importance of each planet. This is what we call identifying the dominant planets. This process obeys rules that depend on the astrologer's sensitivity and experience but it also has precise and steady bases: thus, we can take into account the parameters of a planet's activity (the number of active aspects a planet forms, the importance of each aspect according to its nature and its exactness), angularity parameters; (proximity to the four angles, Ascendant, Midheaven, Descendant and Imum Coeli or Nadir, all of them being evaluated numerically, according to the kind of angle and the planet-angle distance) and quality parameters (rulership, exaltation, exile and fall). Finally, other criteria such as the rulership of the Ascendant and the Midheaven etc. are important.

These different criteria allow a planet to be highlighted and lead to useful conclusions when interpreting the chart.

The overall chart analysis begins with the observation of three sorts of planetary distributions in the chart: Eastern or Western hemisphere, Northern or Southern hemisphere, and quadrants (North-eastern, North-western, South-eastern and South-western). These three distributions give a general tone in terms of introversion and extraversion, willpower, sociability, and behavioural predispositions.

Then, there are three additional distributions: elements (called triplicity since there are three groups of signs for each one) - Fire, Air, Earth and Water - corresponding to a character typology, modality (or quadruplicity with four groups of signs for each one) - Cardinal, Fixed and Mutable - and polarity (Yin and Yang).

There are three types of dominants: dominant planets, dominant signs and dominant houses. The novice thinks astrology means only "to be Aries" or sometimes, for example, "to be Aries Ascendant Virgo". It is actually far more complex. Although the Sun and the Ascendant alone may reveal a large part of the character - approximately a third or a half of your psychological signature, a person is neither "just the Sun" (called the sign) nor just "the first house" (the Ascendant). Thus, a particular planet's influence

may be significantly increased; a particular sign or house may contain a group of planets that will bring nuances and sometimes weaken the role of the Ascendant, of the Sun sign etc.

Lastly, there are two other criteria: accentuations (angular, succedent and cadent) which are a classification of astrological houses and types of decanates that are occupied (each sign is divided into three decanates of ten degrees each). They provide some additional informations.

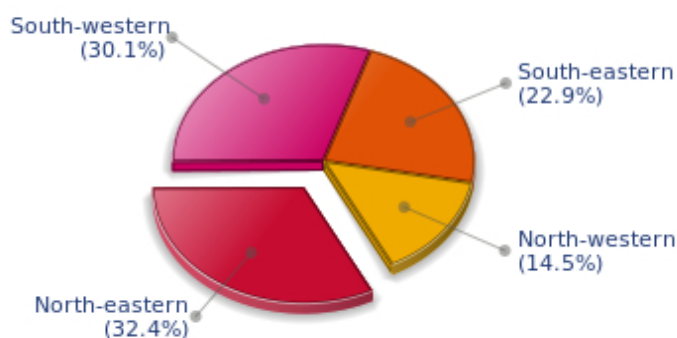
These general character traits must not be taken literally; they are, somehow, preparing for the chart reading. They allow to understand the second part of the analysis, which is more detailed and precise. It focuses on every area of the personality and provides a synthesis of all the above-mentioned parameters according to sound hierarchical rules.

As explained in the introduction of your Psychological Portrait report, minor dominants are analysed at the end of Annex 1, for purposes of clarity.

Your Planetary Repartitions

Each quadrant is a combination of the four hemispheres of your birth chart and relates to a character typology. The Southern hemisphere – the top of your chart, around the Midheaven – is associated with extraversion, action, and public life, whereas the Northern hemisphere prompts to introversion, reflexion, and private life. The Eastern hemisphere – the left part, around the Ascendant – is linked to your ego and your willpower, whereas the Western hemisphere indicates how other people influence you, and how flexible you are when you make a decision.

Your Four Quadrants

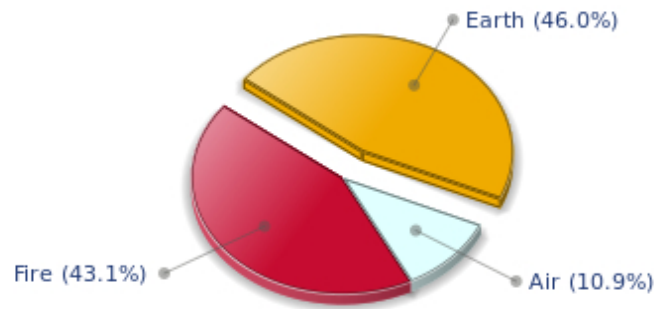


Joan Baez, the nocturnal North-eastern quadrant, consisting of the 1st, 2nd and 3rd houses, prevails in your chart: this sector favours self-assertion and material security to the detriment of your perception of others. You consider self-transformation to be a hazardous adventure. You are inclined to seek stability and you tend to protect yourself with your actions. Possession, acquisition but also communication, without opening up too much, are part of your deep motivations. You are rather autonomous and constant, however it is important that you pay more attention to others, so that you can improve your outcomes.

Your Dominant Modes and Elements

Joan Baez, here are the graphs of your Elements and Modes, based on planets' position and angles in the twelve signs:

Your Four Elements



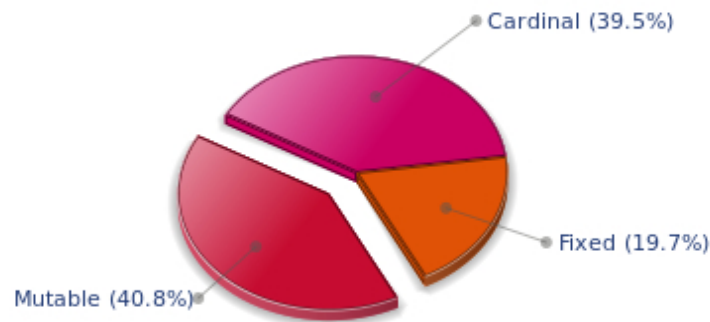
Like the majority of Earth signs, Joan Baez, you are efficient, concrete and not too emotional. What matters to you is what you see: you judge the tree by its fruits. Your ideas keep changing, words disappear, but actions and their consequences are visible and remain. Express your sensitivity, even if it means revealing your vulnerability. Emotions, energy and communication must not be neglected; concrete action is meaningless if it is not justified by your heart, your intellect or your enthusiasm.

Joan Baez, Fire is dominant in your natal chart and endows you with intuition, energy, courage, self-confidence, and enthusiasm! You are inclined to be passionate, you assert your willpower, you move forward, and come hell or high water, you achieve your dreams and your goals. The relative weakness of this element is the difficulty to step back or a kind of boldness that may prompt you to do foolish things.

Your natal chart shows a lack of the Water element, with only 0.00% instead of the average 25%. Whether you are aware of it or not, affective values bring about problems, for you or your close friends. In general, a lack of Water does not necessarily mean that you are unable to love as much as others do. However, you may find it difficult to express the deepness of your heart and of your feelings. In the best cases, you come to terms with it, you adjust, you manage to show more affection or, why not, you pretend to be really affected! In the worst cases, you get into the terrible habit of repressing these essential values and you tend to forget that they are the basis of the richest and strongest bonds between human beings.

The twelve zodiacal signs are split up into three groups or modes, called quadruplicities, a learned word meaning only that these three groups include four signs. The Cardinal, Fixed and Mutable modes are more or less represented in your natal chart, depending on planets' positions and importance, and on angles in the twelve signs.

Your Modes



The Mutable mode is the most emphasized one in your natal chart, Joan Baez, which indicates a mobile character that is curious and thirsty for new experiences and evolution. You are lively and flexible, and you like to react quickly to solicitations, but don't confuse mobility with agitation, since this is the danger with this configuration - and with you, stagnation is out of the question. Security doesn't matter as long as you are not bored. You optimize, you change things, you change yourself... all this in a speedy way.

Your Dominants: Planets, Signs and Houses

The issue of dominant planets has existed since the mists of time in astrology: how nice it would be if a person could be described with a few words and one or several planets that would represent their character, without having to analyse such elements as rulerships, angularities, houses, etc!

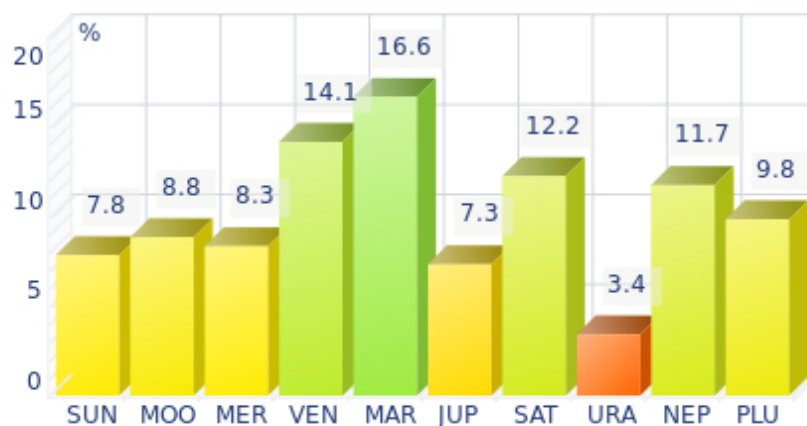
The ten planets - the Sun throughout Pluto - are a bit like ten characters in a role-play, each one has its own personality, its own way of acting, its own strengths and weaknesses. They actually represent a classification into ten distinct personalities, and astrologers have always tried to associate one or several dominant planets to a natal chart as well as dominant signs and houses.

Indeed, it is quite the same situation with signs and houses. If planets symbolize characters, signs represent hues - the mental, emotional and physical structures of an individual. The sign in which a planet is posited is like a character whose features are modified according to the place where he lives. In a chart, there are usually one, two or three highlighted signs that allow to rapidly describe its owner.

Regarding astrological houses, the principle is even simpler: the twelve houses correspond to twelve fields of life, and planets tenanted any given house increase that house's importance and highlight all relevant life departments: it may be marriage, work, friendship etc.

Joan Baez, here is the evaluation diagramme for your planets:

Your Dominant Planets



The three planets that are most highlighted in your chart are Mars, Venus and Saturn.

Mars is one of your dominant planets and provides you with its efficient energy and enthusiasm: with a powerful Mars in your chart, action - but also will and ability to undertake - is not an empty word for you. You are active, dynamic, willing to fight, courageous, and you are never afraid to move mountains, even though risks are part of the adventures that you start with determination.

However, your patience is not always up to your boldness and a kind of feverishness, or even anger, can tarnish the quality of your achievements. That would be a pity since the Marsian is a champion in matters of efficiency! Mars symbolizes display of action, conquering spirit that favours discipline and order - beware of not being fussy - and lies at the frontier between action and brutality, between conquest and potential aggressiveness.

With Venus among your dominant planets, one of your first reflexes is... to please! Your look, your charm, and your seduction are omnipresent elements in your behaviour.

Your approach to things is connected to your heart, and for you, no real communication can flow if your interlocutors exude no sympathy or warmth. Cold and logical reasoning, clear thoughts and good sense are not important to you: if there is no affective bond with your environment, no connection can be established with the Venusian that you are, and nothing happens.

You have a strong artistic side, and you never neglect subjective but clear concepts such as pleasure, beauty, and also sensuality. However, sometimes to the detriment of efficiency, durability, logic, and... detachment.

Saturn is part of your dominant planets: among the facets of your character, you have a grave and serious side, wise and somewhat severe, since your concentration can be powerful to the detriment of carelessness and friendliness.

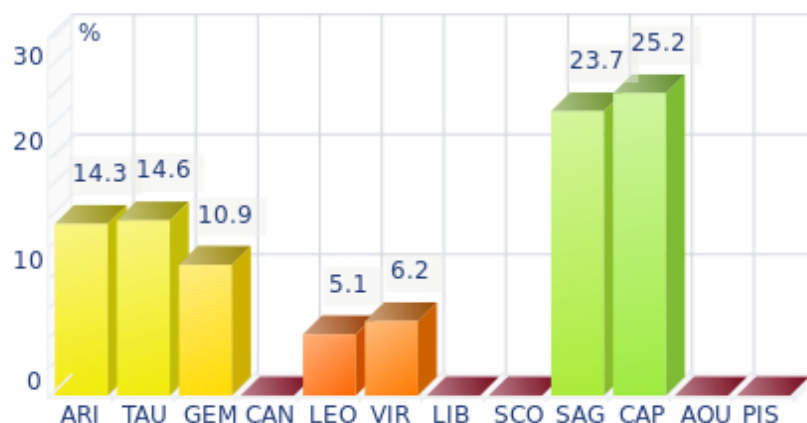
You often look austere, but it is only an appearance, a kind of modesty or reserve; however, it is true that the Saturnian, who is fond of time, effort, asceticism, rigour and sobriety, may have popularity issues. Nevertheless, honesty and straightforwardness, reliability, as well as slow, wise and deep mental process,

although not very popular and visible qualities, eventually become noticed and appreciated. Saturnians' second part of life is usually easier and more fulfilling.

Like the Jupiterian, your Saturnian facet prompts you to seek the essential, security, and longevity. However, the difference with the former is that you will never give priority to wealth or "the bigger, the better" philosophy for the sake of power. Saturn, like Jupiter, symbolizes social integration, and it is usually considered positive to have a harmonic Jupiter and Saturn in one's chart because of their social adaptation capacities.

Your vulnerability lies in your too serious and austere side, which may lead to unwanted loneliness and affective frustration. This generally does not last because Saturnians often hide deep down a golden heart that ends up revealing itself...

Your Dominant Signs



In your natal chart, the three most important signs, delineated according to the above-mentioned criteria, are, in decreasing order of strength, Capricorn, Sagittarius and Taurus. They are often prominent because your Ascendant and your Sun are posited there. However, it is not always the case: it may be because they are occupied by a cluster of planets, by a planet near an angle other than the Midheaven and the Ascendant, or because two or three planets are very active and form numerous aspects from these signs. Therefore, you partly take on the three signs' characteristics, which are somehow superimposed on your natal chart, and all the more so if any of the signs in question is highlighted.

Capricorn is one of your dominant signs and endows you with a grave and serious style that seems to stick to you constantly. But if you have that reserved and cold side - as some extrovert people may think - on the other hand you possess sturdy qualities: you are strong-willed and tough. Your long-term vision, your sense of duty, and your ambition are not affected by the derisory and erratic motions that seem to upset most mortals less steady than you. Besides, you are like a good wine, you age well and your natural solemnity or serious side paradoxically turns into an almost cheerful appearance, as you grow older. You are actually very sensitive when it comes to love. Faithful, caring, sweet, and sensitive, your behaviour is very different in your everyday, sentimental life. A golden heart beats under your tough and austere appearance...

Sagittarius, an adventurous and conquering fire sign, is dominant in your chart: you are enthusiastic,

enterprising, optimistic, very sociable, and mobile - you have itchy feet both physically and mentally. Nobody gets bored with you because you are always planning things and suggesting excursions, at least... when you are around and not already gone on a trip! Obviously, so many movements for one woman may scare people off, and some of them may even criticize your brutality or your tendency to loose your temper, but you are so warm and genuine, so expansive, isn't this a good thing? And all the more so, since your sense of humour is overwhelming...

With the Taurus sign so important in your chart, you are constructive, stable, and sensual. Good taste, sense of beauty, manners, and unfailing good sense - all these qualities contribute to your charm and seductive power. Furthermore, if some people criticize your slow pace and your stubbornness, you rightly reply that this is the price for your security, and that you like the way it is - slow and steady....

Your Dominant Houses



Houses 10, 1 and 8 are the most tenanted ones in your natal chart. To compute their strength, planets and angles are weighed according to various astrological criteria such as swiftness, activity, angularity, rulership etc. From the analysis of the most tenanted Houses, the Astrologer deduces the fields of activity that are most relevant to you, be it because of what you are experiencing, or what you may experience in the future, or because of your deep inner motivations.

With a prominent 10th house, your destiny's achievement may be very notable: the 10th house represents your career, your public life, and your ambitions. A good deal of your energy may thus be used to successfully implement what you have in mind. Instinctively, you are very keen to make your dreams come true. Sooner or later, you will deal with the public, and your personal achievement will go through trials and ordeals: other people and visible actions.

With a dominant 1st house, your magnetism is powerful, and your individuality as well as your willpower are out of the ordinary. You are a determined, strong-willed, and assertive person, with this relative criterion at least.

It is likely that you never go unnoticed when you are in a crowd or a in reunion: an important 1st house suggests that you are a charismatic person with above average vital energy, especially if the Sun is present in this sector.

Your personal interests are always important and you never forget them, which doesn't mean that you are

self-centered, but only that you behave according to what is in harmony with your deep nature!

Your 8th house is very highlighted: it is the most complex house of the Zodiac. It symbolizes above all passion and transformation, which often go hand in hand. Indeed, you have a tendency to experience everything to the bitter end, and you overstep propriety borders because you want to understand everything, even what is... forbidden. This house relates to complex spheres such as sexuality, possessions and dispossessions that don't depend on you (inheritances, donations, sudden financial losses), death too - not yours in particular, so, don't worry! - and understanding of hidden or occult things: here are the fields that affect you generally, because you are naturally interested in them or because life gets you involved in spite of yourself.

Your Style, Behaviour, and Peculiarities

What is commonly known as "sign" indicates the position of the Sun in the Zodiac. The Sun highlights all the characteristics of the sign he tenants. According to astrology traditional rules, these characteristics are all the more pure and exact when the Sun is strong in the sign, or when the sign is particularly highlighted within the chart. Here, we indicate the pure characteristics of the sign but you must bear in mind that they may only shed a light on a particular aspect of your personality. Indeed, the sole sign of the Sun, or of the Ascendant, can never describe an astrological chart because it depends on the degree of strength of the said sign in your chart.

Another important point must be underlined. Contrary to the Ascendant, which clearly describes your appearance, your vitality, your physical constitution, your spontaneous behaviour and the image you project, your Sun sign describes your inner self, which you may not completely be aware of, and which may emerge gradually as you mature: it is about your inner personality that you reveal only to the members of your entourage whom you trust. The Sun sign is likely to be the final form of your personality, once it has evolved in line with the energies of the other parts of your chart, the beginning of which is seen in the Ascendant, your external "bark".

The Ascendant is one of the major components of your natal chart. It is the zodiacal sign that rises in the East at the very moment of your birth. To calculate it, it is therefore necessary to know your exact time of birth.

It provides with a wealth of information on your personality. It is one of the key features that allows the analysis of several parts of you, such as your appearance, your character as it is initially perceived and your immediate behaviour. It describes the external aspect of your personality which you always display, but it also describes your physical constitution in the long-term, in other words, your health.

Please be aware that, in spite of the importance of the Ascendant, the accuracy of its description depends on how strongly highlighted it is in your natal chart. We use the entire set of astrological rules to assess the strength of the Ascendant. In most cases, the Ascendant is as revealing as your "sign", i.e., the sign where the Sun is posited at the time of birth.

You were born under the sign of Capricorn and your Ascendant is in Aries

Before broaching the details of the meaning of your Sun and your Ascendant, as a preamble, we offer a brief generic interpretation of their combination in your chart:

Your personality is shaped by two Cardinal signs. Capricorn and Aries have in common the sense of initiative as well as the will to create and be the driving force behind a project or any other work. Their similarity ends here. Owing to your Aries Ascendant, you come across as an impulsive, reactive, and spontaneous person spurred by an ebullient energy to people who do not know you well. You do not immediately show your Capricorn inner self, which only your friends and relatives know well. You are organised, slightly grumpy and solitary, and you rely on your patience and your long-term vision to achieve your projects. Thus, the image you first project is quite far from what you really are deep down. You ought to make good use of Aries' courage and generosity so as to offset Capricorn's typical coldness and sternness, bearing in mind that the latter's sense of duty and pragmatism protect against Aries'

recklessness.

You were born with the Sun in Capricorn

Psychologically speaking, your nature is introverted and cold, totally controlled and phlegmatic, at least regarding the image you project invariably. You seem unemotional and austere. Actually, due to your secondarity, you chew over your strategies or your reactions required by your environment. You are slow but very thoughtful, solid and balanced. You are as curt as you are cold and you put the entire strength of your character at the service of your huge and long-term ambition or of your detachment from earthly riches and you focus on spiritual values.

Like all the persons born under an apparently reserved and tough sign, your inner personality is often charming and gentle, as if the thick armour, forged throughout childhood, had entirely preserved the purity and the warmth of the soul imprisoned within.

As you are born under this sign, you are serious, cold, disciplined, patient, focused, thoughtful, ambitious, indomitable, cautious, lucid, persistent, provident, steady, introverted, stern, wilful, hard-working, responsible, persevering, honest, realistic, loyal, reserved, resolute, moralistic, quiet, rigorous, attached and reliable. But you may also be curt, withdrawn, calculating, petty, cruel, unpleasant, ruthless, selfish, dull, rigid, slow or sceptical.

You are courageous and rational, Madam, but you need affection and tenderness in spite of what you say. You try constantly to be reasonable and to repress the sentimental weaknesses that come up once in a while. In general, there are few amorous encounters at the beginning of your life.

But quite rapidly, you become aware that solitude is not good for your balance. You remain on the defensive, you are hurting in your shell, that convenient ivory tower where you protect yourself in all areas, except this particular one...

With an aching heart, you will finally forsake your defences and you eventually experience a few rare exceptional encounters. Among them, you will meet with your soul mate, to whom you will dedicate all your time and your love with loyalty, faithfulness, a strong sense of duty and maximal efficiency.

You will control your children's education, inculcating in them the values of effort, patience, perseverance and social rules. You will teach them that the old saying applies to them too, that slow and steady wins the race. To be early is not to be on time... but their time will come!

Your Ascendant is in Aries

Your natural energy is cut-and-dried. It may prompt you to take the driver's seat wherever you are. Were it not for the strange feeling of sympathy you arouse, you would seem to be arrogant. Charging ahead is not devoid of drawbacks. Your courage and your restlessness may hurt you and cause you to doubt, all of a sudden. As a consequence, your courage, your honesty, your enthusiasm and your straightforwardness may turn into aggressiveness, rebellion and vulnerability that were never suspected. Fortunately, the level of your dynamism is very high and your instinctive and pugnacious side, your particularly profuse energy will not leave you helpless for too long. The fire in your blood will put you back on the saddle towards new stampedes and conquests, as ambitious and glorious as they are perilous.

Because you are born under this sign, you are courageous, honest, enthusiastic, dynamic, swift, extroverted, straightforward, effusive, warm, impulsive, adventurous, bold, martial, competitive, but you may also be gullible, domineering, self-centered, impatient, foolish, thoughtless, childish, irascible, reckless, primary and a blunderer.

In love, Madam, you are a strong-minded intellectual woman: in general, the first thing that you do is to choose the man who pleases you and in all cases, you are the one to decide whether you want to stay or to leave! If you are a housewife, you are the one to take decisions over everything. Even though you may not be always easy to deal with, you are stimulating and, with you, something is always happening. You are active, optimistic and your entourage must move forward. If your partner invites you to share his business, it will have to be on an equal footing: And your energy, your undertaking and innovative abilities will work wonders.

The ruler of your chart is in Sagittarius

The ruler of the Ascendant, also referred to as the chart ruler, brings a few interesting nuances to the meanings provided by the Sun and the Ascendant. The sign in which the ruler of the Ascendant is posited fine-tunes the style of personality described by the Sun and the Ascendant. It may strengthen it if the sign is identical to either of them.

The ruler of the Ascendant, Joan Baez, is Mars. It is posited in the sign of Sagittarius and gives you a strong inclination for the open sea and for freedom. Loyal and benevolent, you put things into perspective, and you understand the true value of things, perhaps precisely because you travel - whether actually or mentally - and that stepping back from your intimate environment enables you to better perceive what is important and worthy.

Aspects to your Ascendant

Several planets form an aspect with your Ascendant, Joan Baez. Therefore, in their specific way, they modify your behaviour and your personality, which do not take on the pure characteristics of your Aries Ascendant only, but which are a blend of its characteristics with those of the said aspects.

★★★★☆ Neptune opposite Ascendant, orb -3° 52'

Neptune is in opposition to your Ascendant, Joan Baez. This opposition is not really a dissonance since at the same time, it is a conjunction with the opposite angle, the Descendant, or DS, which represents other people, unions, and associations. Therefore, the interpretation of this opposition is that you are endowed with tremendous sensitivity and intuition, which enables you to interact with other people with empathy and imagination, in some sort of a pleasant and irrational mist. Your behaviour in society has more to do with instinctive fusion than with understanding, and... it perfectly suits you! The other side of the coin is that you may not know any more where you exactly stand regarding some of your associations, including your couple. Indeed, you are deeply absorbed in the affective and poetic aspects of your relationships, to the extent that you may overlook signals of distrust or danger coming from your close friends or your spouse. You must put some reason into the way you approach your relationships, in addition to your very remarkable intuition.

★★★★☆ Mars trine Ascendant, orb -1° 43'

Your vitality and your taste for action are obvious, Joan Baez. Thanks to Mars, your behaviour is often perceived as energetic, or at least, as action-oriented and enterprising. Your dynamism is one of your

constant assets.

★★★★★ Pluto trine Ascendant, orb 1° 58'

Pluto, the planet of instinct and secret, is in soft aspect with your Ascendant, Joan Baez. It endows you with exceptional lucidity, which enables you to behave in society in an appropriate, though slightly scathing and domineering way. You exploit your nose and your magnetism, and you do so very successfully!

★★★★★ Moon sextile Ascendant, orb 2° 12'

Your instinct seldom misleads you, as far as your external appearance is concerned, thanks to the Moon's soft aspect with your Ascendant, Joan Baez. You keep your emotions under rather good control, in instinctive and smooth ways.

★☆☆☆☆ Venus square Ascendant, orb 6° 49'

In certain circumstances, Joan Baez, you tend to adopt an attitude that is not necessarily in line with your real emotions. This discrepancy between your behaviour and your feelings, caused by Venus, may disconcert the people you mix with. Have self-confidence, don't be too pushy or... withdrawn, and forget your fears. Then, people can have a better perception of your personality, and you can harvest the fruits of your efforts.

★★★★★ Sun quintile Ascendant, orb 0° 3'

Your will is fuelled by a strong energy, Joan Baez. It enables you to take quick decisions which totally match your personal ethics. Thanks to this good harmony between the Sun and your Ascendant, you feel rather good about yourself, and your inner self perfectly matches the image you are willing to show!

Your Sensitivity

Joan Baez, you tend to hold emotions at bay, as if they were dangerous. You observe with curiosity what is occurring and you strive to objectively, logically and impersonally analyze facts in order to form correct judgments. Contacts and communication are very important to you, Joan Baez, you make use of, even over-use, words, with deep humour because it is an additional way for you to be detached from your feelings. You may come across as superficial because you keep on talking without committing yourself. You need to be constantly on the move, to discover and to communicate in order to avoid boredom. When you are alone, you can spend lots of time with books to nourish your mind that is so avid for knowledge. However, be careful not to miss feelings because you favour intellectual sensations...

Material affairs can have an importance disconnected from reality, Joan Baez: you tend to be very emotional about practical matters related to your personal interests.

Maybe you unconsciously fear some kind of shortage. You seek financial security, however, it may prove counterproductive if you display too much sensitivity in a field that doesn't need any.

The way you earn money often looks like roller coasters: sometimes lucky, even very lucky, but you may lose a lot too, because you are unable to stay Zen in all circumstances. Business requires cold blood, although emotions add charm...

★★★★★ Moon opposite Mars, orb -0° 29'

This Moon-Mars dissonance suggests touchiness and sometimes, aggressiveness. You are irascible and very sensitive to all sorts of threats and dangers. You react very quickly, too hastily. To protect your well being, you must learn to control your mood, to coordinate your actions and to balance your opinions. You are often disturbed by plain facts: either you seek refuge in your intimate realm and refuse to face the truth or, on the contrary, you are engaged in altercations, which forbid all tranquillity. It is important that you balance these two tendencies and that you alternate moments of action with phases of carelessness and relaxation. These two attitudes are relatively irreconcilable.

★★★★★ Moon sextile Pluto, orb -0° 14'

You are a riddle for people... and for yourself. This harmonious Moon-Pluto aspect arouses your desire to understand and to express elements hidden in your unconsciousness. You are interested in the occult, in laws that rule beings and things in the dark. You like to pull strings and to manipulate situations without people's knowledge in order to remain mysterious. You feel fine when you are not in the limelight, but you intervene in the dark, with subtlety. Your intimate behaviour reveals the distance that you strive to keep in order to protect your inner life. You gladly cultivate the angel of the bizarre, even in your life habits and in your daily rhythms.

★★★★★ Sun sesqui-square Moon, orb -0° 16'

In your chart, two polarities are clearly opposing - or complementing – each other: on the one hand, solar values, the image you project and the models you follow. On the other hand, lunar values, moments of letting-go and well being through casualness. When you commit yourself in a project, it is often to the detriment of your peace of mind. Conversely, you completely feel that you are your true self only when you are no more under the scrutiny of the outside world. Therefore, you separate your social and professional activities from your private life and you seldom match the requirements of the former with those of the latter. It may be a hurdle, a fundamental anxiety. It may also be an obvious asset, when it is well integrated: in that case, you succeed in assigning to yourself, and in fulfilling, objectives that are not

necessarily in line with your intimate natural demands, which are preserved and separated from your intentions, your ambitions and your expectations. Thus, a strong will can turn this Sun-Moon hard aspect into a rich instrument for creativity. A shadow zone, or uncertainty, still remains: on the affective plane, you are very sensitive. May be too much, to the extent that you become vulnerable in many circumstances. Because in different periods of your life, your landmarks (solar) and your intimate balance (lunar) will be simultaneously challenged.

★★★★★ Moon trine Neptune, orb -6° 04'

This harmonious Moon-Neptune aspect indicates an exceptional receptivity. You are sensitive to ambiances and you can grasp what is at stake in any given situation. You can pick up things in the general atmosphere that the majority of people miss out. Your deep intuition allows you to feel the subtlest details, that « little nothing » which is the key to behavioural patterns. Inspiration is your guide and imagination accompanies your daily rhythms. Mysteries, psychology, esoterism, fantasy, the supernatural... one of these fields, at least, is of concern to you. You pay utmost attention to your inner life, to moments of tranquillity when you relax, when you allow your mind to wander at will. The danger is that you may seek refuge in the imaginary and that you shirk reality.

Your Affectivity

In your chart, the Sun is in Capricorn and Venus, in Sagittarius. Capricorn structures the couple, idealizes it and protects it against intruders. It is likely that your affective models prompt you to stand for the image of the couple as an indissociable unit, a safe investment, the realm of your private secrets. You do not really need words in love. The relationship is based on an essential closeness that may be biased by any attempt to describe it. However, Venus in Sagittarius gives an inclination for affective discoveries. As time goes by, the desire may fade away when it is not fuelled by new stimulations. There lies the ambiguous way in which your affectivity or amorous life works. And its dangers: whatever you discover under the spur of your desire is integrated, structured, digested, in a way. And the object of desire flies away or gets locked up in a simplistic pattern. However, it is possible to highlight the complementarity of these two modes, antinomial in their principle. Venus in Sagittarius undertakes to fuel the desire that the Sun in Capricorn organizes into an enduring one. In order to experience this configuration constructively, it is important that you fully respect the rigour of your concepts (a rigour that Venus finds austere). You must also quench your thirst for experiences, without which you may shut yourself away in a secret melancholy. Do not cut your desire off inside an ivory tower.

On the affective plane, Joan Baez, you are open, straightforward, spontaneous and you make friends easily because your enthusiasm is expressed jovially, directly and is respectful of well-established moral values. In some cases, you may be opposed to your natal environment or to your family because of your taste for freedom, exoticism or all forms of independence and emancipation. Your feelings are burning and you often get carried away quickly. However, your ability to make friends easily is likely to favour some instability; in other words, faithfulness is not your top priority as long as you have not yet found your soul mate. Ideally, for you, life together must have some degree of mobility and include travels and fresh air. Within your relationship, you need to feel freedom and independence, which you need since your childhood. Under such conditions, harmony and faithfulness can be achieved.

Joan Baez, the choice is yours: love encountered while travelling abroad, or just love for travels and focusing your feelings upon this ideal of evasion towards far-off lands? Or may be both. In any case, you

often tend to fall in love, and even to get married, with a person of foreign origins. Exoticism and difference mysteriously appeal to you and there is little you can do against it. Early in life, you have a craving for space and for changes, particularly regarding your feelings: there is not a single chance that you are content with habits or that you refuse any new and exciting experience full of unusual and unknown features. You are always on the move and you feel so great when you finally find yourself in a ship at the other end of the world or somewhere in an airport, with all your senses stimulated, ready to be seduced by the unusual charm of the person whom you will meet and who will not resemble you. Your feelings are vast and generous, sometimes even sublimated and idealized because you so adamantly refuse any limitation. You have an undying thirst for higher knowledge that can only be gained in the field of spirituality or, in the literal sense, through roaming about remote lands, or also analogically, through interacting with culturally different people who have so much to teach you. Your feelings are coloured with the distinctive nobleness and long-term vision that characterize broad-minded persons who do not look at things with an ego-centered and simplistic glance. It is true that, seen from an airplane, the authenticity of all things important stands out finally with more acute sharpness...

★★★★★ Venus square Neptune, orb -2° 57'

You are very idealistic in love and you may be blind. In many circumstances, you deem your sentimental life heavenly and you lay yourself open to delusions. Love is a dream and waking up is often painful. Your imagination distorts the game of intimate situations. It is important that you keep your sense of reality and that you avoid to embark upon dark or muddled paths. Forget about artificial paradises! The Tradition very rightly insists on the tendency for impossible love affairs. Your demand and your thirst for the absolute may make you dread experiencing a common life that is inevitably flawed with compromises and vagaries. The object of your affection is idealized « because it was him, because it was me » and you do not reckon objective elements that will resurface later in full force. With this planetary configuration, the danger is in the idealistic, even fanciful, nature of your affectivity. It is certain that love cannot be bought or reasoned. But how is it possible to live an absolute passion on a daily basis? You must control your heart impulses and, without losing the sentimental riches that are part of your charm, you must put what you love in harmony with what you dream of.

★★★★★ Venus sesqui-quadrature Saturn, orb -1° 48'

This Venus-Saturn dissonance indicates a demanding, complex and often challenged affectivity. You are wondering about the meanings of love, pleasure and emotions. Your passions take an absolute character right away. No compromise, no sham must stain your sentimental life. In such a context, doubts abound. This aspect prompts you to review the roots of your affectivity, so as to find the assurance you lack and to soothe your dormant sentimental anxiety. Love is an eternal and endless quest. Because you are doubtful of the affection people have for you, you may never feel that you are really loved. Your affective behaviour reveals your uncertainties: tests and challenges follow one another until, eventually, you are certain to experience a love that meets your demands. It is obvious that on the sentimental area, you are not looking for the easy way out.

★★★★★ Venus inconjunction Uranus, orb -2° 22'

Your sentimental life is adventurous: you prefer Bohemia to the comfort of a quiet but shaky love affair. You are a hard-liner and you think that love should be genuine or it should not be at all! You have difficulties in resisting your heart impulses and untimely passions that may challenge your affectivity. You need air, freedom and a relative independence. You also need to fully experience your love impulses, regardless of the price to be paid. The heart has its own reasons that no rules can hamper... The obvious danger may be to cause dramatic hurly-burly. Your inflexibility on the affective plane does not favour a

quiet life where « one makes do with very little ». You are the all or nothing type. But does the absolute really belong to our world?

The Way You Take Action and Your Sexuality

Joan Baez, you are a real Goliath and you often excel in sport; your thirst for conquests prompts you to constantly launch new challenges. The enthusiasm you put in your undertakings is perfectly well supported by your moral concepts and an idealism compatible with the values of the society you live in. You are pragmatic, enterprising and sometimes, naive. You do not pay attention to details and you launch various great adventurous projects that are all doomed to success. In a few rare cases, you can funnel your huge energy into more philosophical, even spiritual or religious enterprises, where your entire fieriness works wonders. On the sexual plane, your ardour and your spontaneity are your main assets. The danger is that you may spread yourself too thin in the sense that you may forget about faithfulness, particularly during the extensive faraway travels you are so fond of.

Joan Baez, this atypical configuration in your natal chart is one of the most complex to describe because of the very nature of the 8th house, the house of transformation, of crises leading to personal reconstruction, but also the house of sexuality, hidden knowledge, investment and inheritance.

In addition, the 8th house always deepens emotions and quickly brings passion into the previously mentioned areas. In this house, the quality of Mars' expression depends on the rest of the natal chart.

In order not to make mistakes, it is safer to talk about a possible range of fields of predilection: your energy can be expressed efficiently in areas dealing with financial investment, death, possessions and sexuality.

This configuration may also simply increase the intensity of emotions connected with these hidden topics and, depending on the rest of your natal chart, it may or may not translate into life assets. More than with any other placement, you can be born again from your ashes, like the phoenix. After having undergone a few major ordeals, it is likely that you will have the strength and courage to do so.

★★★★★ Mars trine Pluto, orb -0° 15'

You have a very personal way of taking action and of experiencing confrontations and struggles. The laws of the world are subtle, often with complex and hidden mechanisms. For these reasons, you prefer to act behind the scenes rather than openly. You manage your daily life in a distant and subtle fashion while you try to understand the logic underlying observed facts. You may also provoke events although you act as if you were not concerned. Your interventions will be as efficient as they are discreet. You may secretly transform your life and you live through the inexpressible motivations that connect you with the invisible realm. Things, which cannot be formulated, must be experimented and felt. You test experiences that your entourage find uninteresting and meaningless.

★☆☆☆☆ Sun semi-square Mars, orb 0° 45'

This aspect shows impulsiveness, a fiery character and sensitivity all on edge. Excess of strength and of energy may jeopardize your life balance and cause impulsive and unconsidered actions. Your ideals are not always in line with your deeds. You are certainly reactive and you stand for yourself heroically. But your untimely fits of anger may worsen existing tensions and bring about uncontrollable situations. Facts

contradict your aspirations. When this configuration is properly reined in, it becomes an inexhaustible source of passion and energy.

★★★★★ Mars sextile Neptune, orb 5° 35'

This harmonious Mars-Neptune aspect is a signature for the missionary or the inspired activist. You are guided by an irresistible and implacable ideal. Exaltation may border on sacrifice for the sake of the noble or rebellious causes that inspire your struggles and your actions. Far from intellectual speculations, you need to live through your passions, to take action and to let yourself be carried away by a mission, an ideal or sometimes, an illusion. Indeed, you may be a Don Quixote fighting windmills, dedicating all your energy to an indefensible or a fanciful cause. More often than not, your commitments are courageous, even heroic. And the faith you display turns perilous enterprises into feasible projects. You can successfully implement actions that are considered doomed to failure by others.

★★★★★ Mars inconjunction Jupiter, orb 2° 34'

You mobilize your energy as soon as there is an opportunity to turn your chances into concrete reality. You assert yourself in a spectacular and demonstrative manner as soon as an assembly gathers and there is a chance for success. However, too much haste and zeal may harm your projects and spoil your expected outcome. The danger with this aspect is your overzealousness as you strive to achieve your objectives and your ambitions, forcing your way through events, whereas the situation requires diplomacy and patience. Too much fieriness may make you miss your target. With this planetary configuration, it is important that you keep in mind that some circumstances need to be handled with precision and clear-sightedness. Not all opportunities are necessarily good. It would be a pity to lose your efficiency through excesses of opportunism or of enthusiasm.

Your Intellect and Your Communication Style

You need to concentrate on a subject, Joan Baez, to deepen your research and to follow your reasoning through with persistence and determination. You are the very type of the thinker who needs time and isolation to meditate at length and allow her serious, methodical and rigorous mind to show its worth. Your feet are firmly planted on the ground and to get your attention, ideas must be followed by implementation, for instance as in the case of mathematics applied to physics. You focus on the essential and you look at the world around you with clear-sightedness. You are not very talkative and you act with caution. You may come across as cold and ambitious even though your comments are always sincere and practical. However, be careful not to isolate yourself and to appear as a lofty and intolerant person.

Your lively and conciliating mind is at the service of your career, Joan Baez. Your natural mobility enables you to constantly adjust and to get the positions you want. Your professional achievement is often the result of your ability to understand that the key to success is in changing.

With your extreme flexibility, you may be interested in many simultaneous occupations. In any case, it is unlikely that you remain in the same company or the same sector all your life, unless the said sector is full of variety, human rapports and travels.

★★★★★ Sun conjunction Mercury, orb 1° 05'

You know how to play with your image, how to give multiple representations of yourself. A precious asset: you are sensitive to other people's opinion and you adapt yourself to the audience. Of course, there

is a "show" side in your manner that may prevent perfect cohesion. But that's the other side of the coin, for an extraordinary capacity to discover. This aspect translates into an acute sense of observation, an intense desire to learn and to bring everything to light. You strive to be informed in many circumstances, to understand the machinery of the world surrounding you, particularly regarding all human topics. And you will change according to that information and the knowledge gained. You have the chameleon's adaptation powers. And its vulnerability, as well.

★★★★★ Mercury trine Uranus, orb 4° 24'

Your state of mind is innovative and turns the surrounding world into a constantly moving field of experiences. You ask relevant questions ... and you answer them. Although you are flexible when you ought to, your principles and your beliefs are unwavering. It seems difficult to catch you off your guard. You multiply observations, relationships, contacts and you never lose face: actually, your mobility hides an unshakable determination and a deep lucidity. In a split second, you are able to catch the useful information or the enriching relationship. The original and fanciful steps you take exclude monotony. Your approach to life is amazing!

★★★★★ Mercury semi-square Mars, orb -0° 19'

This Mercury-Mars dissonance brings about impulsiveness into relationships and contacts. Your sense of controversy and criticism leads to blunders and thoughtless actions. Your verbal violence may harm the efficiency of your actions. You certainly display your views without circumlocution. Your straightforwardness would be commendable if it did not cause those blunders that spoil many situations. It is important that you learn to control your decisions, to coordinate your mental abilities and your fieriness, so as to fully express the quickness of your mind and of your action. Learn to count to ten before you say anything, as it is an excellent exercise for you!

★★★★★ Moon sesqui-quadrate Mercury, orb 0° 48'

The Moon suggests relaxation, whereas Mercury implies a discoverer's mind. They both make sense and each one requires special attention, as they are sometimes upsetting. This Moon-Mercury aspect is likely to bring about nervousness or instability. Nervousness stems from the multiplication of your spots of interest and the perpetual restlessness of your mind, which prevents relaxation and well being from settling in. The outside world constantly appeals to your attention and you shift from one issue to another, to the detriment of your tranquillity. Therefore, it is important that you find the balance between two antinomial attitudes: letting-go versus curiosity, tranquillity versus communication. The new persons you meet with are not necessarily trustworthy and there is no certainty that the contact is harmonious. It is important that you use both influences alternately.

Your Goals, Motivations, Career, and Destiny

Your Sun is posited in the 10th House

Joan Baez, your need for assertion is very strong. It is clearly oriented towards the success of your professional or social destiny, or at least, towards an important rise compared to your initial background; your effort, your will and your goals are well defined in your mind: you have a concrete vision of the kind of destiny you are interested in and you do not want to stay on the backstage! Because in traditional astrology, the Midheaven relates to the mother, should other configurations of your chart concur, your mother might favour your ambition or speed up the success of your career.

You have an innate sense of commandment and a definite taste for honours, prestige, recognition of your self-worth. You don't like vagueness and your objectives are very concrete. You want to quickly leave anonymity and the quietness of the dark, for which you have no affinity. Your determined attitude, and your irresistible desire to play an increasingly important role in the position you hold, are major assets for the actual achievement of your goals. You want to shine forth and to heave yourself up, always higher and higher.

There are real indications of fame, provided that other elements of your chart concur. Even though you did not rise to fame, it is likely that, in your area, you enjoy some degree of glory. You are efficient and, with the help of your organizational skills, it is not difficult for you to find your spot in the sunshine.

In some rare cases, your ascent goes beyond the average ones and it may occur on the spiritual plane instead of the professional or the social plane. Therefore, you may be called upon to play a solar authority role in line with your beliefs and your commitment. You may become a leader or a master in the path you have chosen.

Even though you may hesitate to admit it and to tell others, your frenzied inclination for success inevitably brings about conflicts of authority; striving to heave yourself up, too high and too quickly, to a level that is so different from the one you were at, not so long ago, exposes you to clashes with the hierarchy or with those whom you regularly outgrow in the course of your ambitious journey and who may not agree with you.

There is also the fearsome and dormant danger of exhilaration of power and its disastrous consequences; hopefully, you do not have to jump into it with both feet. A fair dose of detachment and meditation may spare you many a trouble.

The ruler of your chart is in the 8th House

The ruler of the Ascendant, also referred to as the chart ruler as explained in a previous chapter, is also posited in one of the twelve Houses of the chart. Just like the Sun in his House, the ruler of the Ascendant provides certain abilities, or it makes you appreciate more keenly certain areas of life.

The ruler of your chart is in the 8th House, Joan Baez. This configuration gives you a strong inclination for mysteries, the unknown, the occult, sexuality, as well as death. In the materialistic area, matters of inheritance and, more generally, other people's money - stock exchange, speculations, donations, etc. - may play a major role in your life.

Aspects influencing your ambitions

Regarding your destiny or your career, the following aspects of your natal chart allow to fine-tune what has just been said above:

★★★★★ Jupiter conjunction Saturn, orb 2° 03'

Jupiter and Saturn are favourably linked to each other in your natal chart. The Tradition indicates that this planetary aspect is a good omen for your social success and good integration in the society. Indeed, Jupiter stands for public life, respect for laws and hierarchy, and acceptance of established rules, whereas Saturn symbolises wisdom, time, seriousness, and perseverance. Therefore, it is only logical that with

this Jupiter - Saturn configuration, your career, or your social destiny if you do not work, is well thought of by society, and that you are most likely to experience its happy outcomes sooner or later.

★★★★★ Sun trine Uranus, orb 3° 18'

This aspect reinforces the determination as well as the will to further your original, sometimes revolutionary, ideas and designs. Your capacity of innovation is important for your image. You have the soul of a leader. You display a forceful and synthesizing mind. You may tend to oversimplify or to schematize situations. In most cases, you know where you are heading to and how to reach your goals. Your determination is two-edged... not everybody will appreciate your contrasted standpoints. It is yes or no, black or white! This planetary configuration indicates certainties. When it comes to acting according to your inner motivations and to respecting your models, you can show an unusual willpower and sweep aside all obstacles lying on your path.

★★★☆☆ Neptune square Midheaven, orb 3° 08'

Owing to this dissonance between Neptune and your Midheaven, Joan Baez, you may have difficulties in knowing what you want regarding your professional orientation. Your imagination and your flexibility cause contradictory feelings and sometimes result in indecisiveness. You are doubtful about the path your social or professional destiny should follow. There is definitely nothing serious to worry about. It is just that Neptune represents a heavy emotional burden which you must firmly deal with, so as not to delay your trek towards success!

★★★★★ Venus conjunction Midheaven, orb 6° 06'

With Venus in conjunction with your Midheaven, Joan Baez, it is all your natural warmth, or just your natural way to express your feelings, that is well received in society. This usually enables you to shine with happiness in your professional circles, or to accomplish your social destiny with reliable assets. It may be that a female, or the fair sex in general, favours your career progression and helps you because your personality arouses spontaneous sympathy. The professions you thrive in are of a Venusian nature, meaning that you deal with the world of beauty, the arts, pleasures, fashion, aestheticism...

★★★★★ Jupiter trine Midheaven, orb 5° 01'

Jupiter is in soft aspect with your Midheaven, Joan Baez. It means that you are often lucky, or that you receive support in your career or your social destiny. You trust your abilities to overcome obstacles coming up in your way, and you respect authority and laws. So, thanks to this configuration, you make your way in the world with the feeling that you move forward rather quickly, as compared to average people.

★★★★★ Saturn trine Midheaven, orb 7° 04'

Thanks to this soft aspect between Saturn and your Midheaven, your long-term efforts and your perseverance are rewarded, and you gradually climb up the stairs of success. Time is your ally as far as your career and social destiny are concerned. Carry on the good work, and rest assured that your seriousness and your obstinacy are appreciated. They are instrumental in your success, especially during the second part of your life.

★★★☆☆ Pluto inconjunction Midheaven, orb -2° 41'

Owing to this dissonance of Pluto with your Midheaven, Joan Baez, you may experience brutal changes in your professional or your living conditions. These upheavals are imposed on you by fate, and they sometimes take on a mysterious nature. Although you do not always understand the cause behind them,

you must accept these changes as they occur, in order to bounce back in a different path, or just elsewhere.

★★★★★ Moon inconjunction Midheaven, orb 2° 55'

There is a dissonance between the Moon and your Midheaven, Joan Baez. It may indicate a discrepancy between your sensitivity and the goals you set for yourself in life, although this dissonance seldom plays out dramatically. You may feel that your emotions sometimes catch you off your guard in society, and that the level of your popularity is not too satisfactory, without your knowing the reasons why. In some cases, females may thwart your social ascent.

Your Assets and Your Part of Joviality

Joan Baez, your practical abilities to organize and to increase your material security are enhanced with the planet of Greater Fortune in this peaceful and warm sign. Your affectivity is strengthened, and so are your taste for comfort and your needs... Undeniably, the possibilities for affective and material fulfilment are favoured. The other side of the coin may be an exaggerated form of materialism.

Joan Baez, Nature gives you a nudge in the right direction and endows you with enthusiasm and generosity, contributing to your charm and dynamism. You are attractive, and you hold sway over groups. Your physical appearance is that of a jovial and charismatic person.

The planet Jupiter symbolizes expansion, broadness and generosity. Jupiter is associated with the functions of synthesis, enthusiasm and optimism. In your natal chart, his house position is more important than his sign position because, like Saturn, Uranus, Neptune and Pluto, he is a slow planet. Many people born in the same period have Jupiter in the same sign. This is the reason why the sign occupied here is less meaningful than when it is occupied by the so-called fast planets, i.e. the Sun, the Moon, Mercury, Venus and Mars. Therefore, some caution is to be exercised as you read what follows.

Jupiter in Taurus amplifies your practical sense and your capacity to improve your material life. You can experience a long-lasting fulfilment. You are often a bon viveur who likes life's good things. You manage and develop your patrimony with a lot of luck and generosity. Your taste is very good and your loyalty is genuine.

Your Serious Side

Material, practical or frivolous matters (comfort etc.) are highlighted. Obstinacy, even stubbornness, and the instinct of possession may get you into trouble. On the other hand, you can learn how to step back and to improve the practical management of your assets.

Solemnity, seriousness and discipline are your keywords, Joan Baez. It is difficult for you to relax, and it is most likely that at the beginning of your life, you are shy, quite introspective, and distant. You may be worried even though you have no reasons to do so. Your doubts may be overwhelming to the extent that they affect your vitality.

As time goes by, thanks to your strong will, your serious side becomes an asset for your success. You

learn spontaneity, risk-taking, and lightness, and you are less concerned with the image you project because, in your heart of hearts, there already are hindsight, solemnity, and some sort of wisdom!

The planet Saturn symbolizes contraction, effort, time, limitation and concentration. Saturn eliminates anything that is not authentic, sooner or later. It is impossible to cheat him as he gives an irresistible desire to form a coherent whole with oneself, in responsible and wise ways. He is the great purifier. He represents our limitations but also our truth. In your natal chart, the house position where Saturn is posited is more important than his sign position because, like Jupiter, Uranus, Neptune and Pluto, he is a slow planet. Many people born in the same period have Saturn in the same sign. This is the reason why the sign occupied here is less meaningful than when it is occupied by the so-called fast planets, i.e. the Sun, the Moon, Mercury, Venus and Mars. Therefore, some caution is to be exercised as you read what follows.

Saturn in Taurus decreases your appetite for material things but he endows you with more caution and wisdom in the financial area in general. He also gives you a more obstinate and deeper nature.

A Few Special Points

Your Uniqueness and Your Utopias

Material topics often take an unexpected turn and may even thrive in sudden and exceptional ways. Conversely, they may also cause serious troubles. This area of your life is filled with ups and downs.

On a more symbolical plane, your attachments to people, as well as your sensual behaviour, are devoid of conventional steadfastness and quietness: you may be possessive or surprisingly detached. You are impossible to categorized and you are definitely special.

Your Inspiration and Your Illusions

Your approach to daily life and your behaviour in your work environment are whimsical and abide by one single law: your mood or your feelings of the moment!

Although it may be detrimental to your own organization, it also endows you with qualities such as being easy-going, helpful, and ready to give assistance to those whom you perceive as nice persons.

Your health is quite fragile and, if the emotional sphere is unsatisfactory, you may transfer your moods to the physical plane and, for instance, you may be affected by allergies or problems difficult to identify.

Your Passion and Your Authority

Your sentimental life and the way you approach leisure are intense, even obsessive. You are willing to experience amorous passions where love and hatred closely cohabit!

You are creative, and you want to influence your children and your love conquests. You never take things lightly and, sooner or later, your love games and your entertainments may take a worrisome turn because

you commit yourself too deeply.

Your sentimental relationships may be tinted with sadomasochism. If you are careful to keep it light, there is no reason why you should get into trouble.

Happy gambling is part of the possible characteristics of this quite pleasant configuration. You must step back in order to be able to handle it properly.

Your Isolated Planets

In general, the ten planets of the chart are connected to other planets by major or minor astrological aspects. It is owing to those ties that the planets' energies can manifest in the chart owner's personality and play out within safeguards according to a specific tonality.

It seldom happens that in a natal chart, a planet is totally disconnected from the nine other planets.

Astrologers have observed that when such a case occurs, the person feels the energy of the unaspected planet in quite a singular way, very jerky and powerful at the same time. Thus, for instance, the famed astrologer Jean-Baptiste Morin de Villefranche wrote that "an unaspected planet heralds that something strange or extraordinary will take place regarding the meanings of the house in which the said planet is posited" (source : l'astrologie selon Morin).

Rules for detecting an unaspected planet: among all the testimonies that we have reviewed to this day, based on our experience, we tend to agree with American astrologer Janis Huntley who accepts seven aspects, which involve the zodiacal twelve sections of 30 degrees. The aspects to be considered are the conjunction (0 degree, cooperation or tension), the semi-sextile (30 degrees), the sextile and the trine (60 and 120 degrees respectively, aspects of cooperation), the square and the opposition (90 and 180 degrees respectively, tensed aspects), and the quincunx (150 degrees, slightly tensed). In this detection, the chart's angles are not taken into account.

In any case, it is important to remember that an isolated planet clearly expresses its influence when it is a personal planet. Thus, when the Sun, the Moon, Mercury, Venus, or Mars is isolated, it is certain that the effects described by Jean-Baptiste Morin de Villefranche will become manifest. As for Jupiter, Saturn, Uranus, Neptune, and Pluto, one must be cautious because the volume of cases documented is not yet large enough.

Your chart has no isolated planet, and this particular case does not apply to you.

Annex 1: Your Minor Dominants

The five following dominants are less significant than those described at the beginning of your report. They may not be strongly felt. In some cases, they add several minor details to the analysis of your character, but they are rather for curiosity purposes. It is not necessary to take them into account when you first read your portrait.

Your Planetary Repartitions: Northern, Southern, Eastern and Western Hemispheres

The axis linking the 1st house's cuspide (the Ascendant) to the 7th house's cuspide - the Descendant - divides the zodiac into two bowls, a superior bowl, in the South, and an inferior bowl in the North. Quoting an expression by the famous American astrologer Rudhyar, the Southern part and the Northern part correspond to two functions: "being" and "doing". Other concepts are also associated with this North and South distribution, such as introversion - Northern hemisphere - and extraversion - Southern hemisphere - being or appearances, inner life or external life, reflection or action, dreaming one's life or living one's dreams, the abstract or the concrete, backstage or limelight.

This is not about determination but about personal inclination: thus, some people will be thrown into public life despite a prominent Northern hemisphere. If this happens, however, it will not be due to their will, their taste or their deep nature. Conversely, a prominent Southern hemisphere will not bring about a famous destiny to its owner, even if he tends to turn the spotlight on himself, or if he looks for a more active life. It is a matter of deep nature and natural inclination. Of course, none of the typologies is "superior" to another.

In your birth chart, Joan Baez, the ten main planets are distributed as follows:

Your Northern and Southern Hemispheres



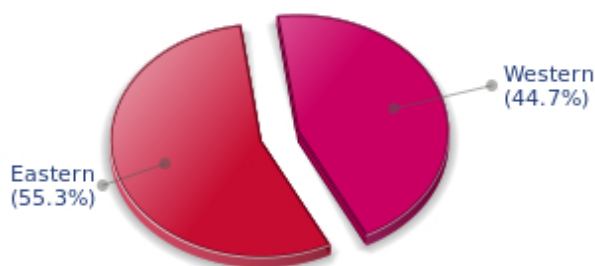
Joan Baez, the planetary elements of your chart are well balanced between the North and South hemispheres. As a result, your public destiny and your inner life are harmonious, and there is no conflict between your actions and your thoughts. Your private and public spheres coexist in harmony and naturally match your temperament.

The birth chart is divided into two other parts, Eastern and Western, by the axis linking the Midheaven to the Imum Coeli.

The Eastern part, on the Ascendant side, shows the person's ego, will, magnetism, and vitality, whereas the Western part, on the Descendant side, symbolizes other people, communication, relationships and their influence, as well as flexibility and adaptability.

Joan Baez, here is the planetary repartition in your Eastern and your Western hemispheres:

Your Eastern and Western Hemisphere:

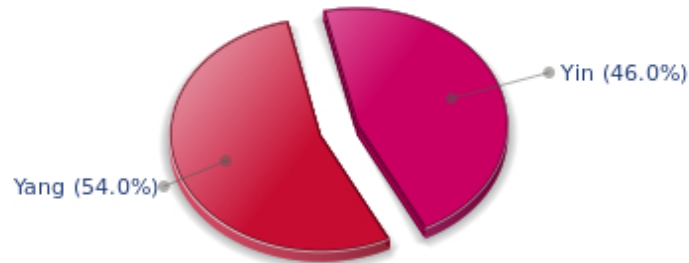


Joan Baez, the East and West sides are well balanced in your chart. This means that you are not too determined or authoritarian, and that you are neither impressionable nor fragile. You are capable of taking decisions, in full awareness, without anyone's help when circumstances so require. However, you have no problem taking your entourage's viewpoints into consideration, with tact and intelligence.

Your Yin and Yang Polarity

The twelve signs are divided into two polarities, called active or passive, or sometimes masculine and feminine, positive and negative, Yang and Yin. This classification corresponds to two quite distinct tonalities, the first one bringing extraversion, action, self-confidence and dynamism, the second one, introversion, reactivity, reflection and caution. None is superior to the other, each group has its own assets and shortcomings. Odd signs - Aries, Gemini, Leo, Libra, Sagittarius and Aquarius - belong to the first group, whereas even signs - Taurus, Cancer, Virgo, Scorpio, Capricorn and Pisces - belong to the second group.

Your Yin and Yang Polarity



According to the disposition and qualities of your planets and angles, you are rather influenced by Yang energy, the active polarity, Joan Baez: more concerned about actions than reflection, you sometimes rush without standing back and without the deepness that is needed. However, your spontaneity prompts you to take fresh starts, even after repeated failures caused by your rashness.

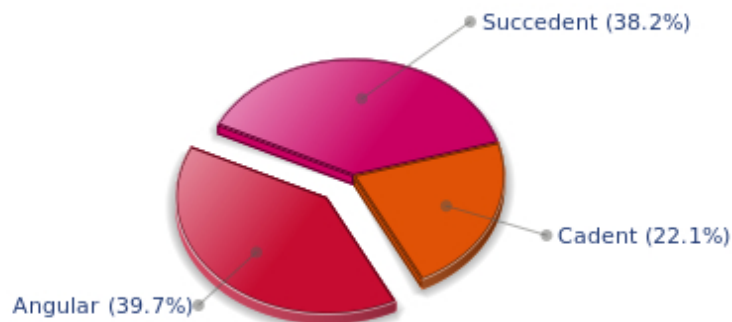
Your Houses' Accentuations

Houses are split up into three groups: angular, succedent and cadent.

The first ones are the most important ones, the most "noticeable" and energetic houses. They are the 1st, 4th, 7th and 10th houses. Their cuspides correspond to four famous angles: Ascendant for the 1st house, Imum Coeli for the 4th house, Descendant, opposite the Ascendant, for the 7th house and Midheaven for the 10th house, opposite the Imum Coeli.

Planets are evaluated according to a whole set of criteria that includes comprehensive Western astrology rules. At their turn, planets emphasize specific types of houses, signs, repartitions etc., as previously explained.

Your Houses' Accentuations



Your angular houses, namely, the 1st, 4th, 7th and 10th houses, are very emphasized in your chart, Joan

Baez: according to the Tradition, they are the strongest and most dynamic houses. Should the rest of your chart concur, angular houses suggest that you are an enterprising, energetic and assertive woman. Indeed, angular houses are said to generate impulsions and to give a powerful and domineering personality.

Unusual fates are often linked to a predominance of angular houses, but this is only a partial indication...

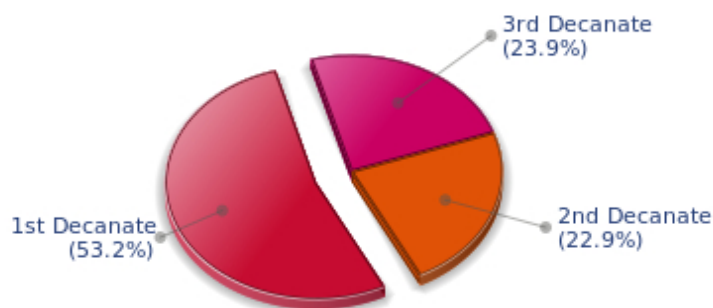
Your Esoteric Decanates

Each sign contains 30 degrees and can be divided into three equal parts: the decanates. The Tradition indicates that specific meanings can be associated to each of the three decanates. Their sphere of activity is usually limited to the Sun sign, however, it is even more interesting to observe the distribution of all the planets in the chart to get an idea of the respective importance of the three decanates, which can complement the description of the personality.

These meanings must be considered with the greatest caution. Indeed, they are minor characteristics that can only underline other outstanding traits of character.

Traditionally, the first decanate highlights the characteristics of the sign where a planet is located. The two other decanates correspond to sub-dominant planets, depending on the nature of each sign. This system leads to a multiplication of meanings and it is impossible to have a clear understanding: here, we prefer to give only the meaning of one decanate in comparison with the other two, within the birth chart as a whole. Again, the greatest caution is needed with regard to this minor indication as it is not always reliable: it is not essential that you read these texts in the beginning. You can get back to them later on, once you have read more important interpretations

Your Esoteric Decanates



The first decanate, which means the part between 0° and 10° of any zodiacal sign, prevails in your natal chart, Joan Baez: this decanate is traditionally linked to vitality and physical constitution, and may indicate that you efficiently express your concrete energy on the material and sensual planes.

Annex 2: Karmic Study

The karmic theme is a good complement to the psychological portrait, or natal chart. This analysis is based on the positions of the Lunar Nodes, the Black Moon and the Part of Fortune: they are also called fictitious points and describe the spiritual purpose of your destiny. Because there is in all of us an experience and a quest, our life is an evolutionary journey... provided that we head towards the right direction, of course! Indian astrologers highly prize the Nodes axis (North Node and South Node). It is the Ariadne's thread that we are invited to follow. The Black Moon indicates the sector where we are most likely to transform or to transcend, whereas the Part of Fortune points out the area where we can easily express our specificity.

The Lunar Nodes: a spiritual path

Lunar Nodes have their roots in the Indian tradition and they are based on a simple concept: each of us have a mission of their own, here on earth, a destiny, a course. According to the Indian philosophy, life is a school: the nodal axis describes our past experiences (South Node, our karma, our spiritual inheritance or our previous lives), and our aims on earth (North Node, our Dharma, the purpose of our current incarnation). This is the reason why the study of the lunar nodes is called "Karmic astrology". Here, we shall not step into hypothetical past lives. Wherever our current trends may come from, all that really matters is that we become aware of the purpose of our life, its finality and our dharma. We are likely to understand our life purpose around the age of 37, when the Lunar Nodes return to their natal position.

During the first part of your life, you manifested an acute sense of challenge, a taste for personal initiatives and an unfailing fighting spirit: these qualities prove helpful in handling any possible setback today. However, you must make an effort to accept your entourage and adopt more open and accommodating attitudes! Life teaches that you must become more sociable and develop the flexible behaviour that you lack. Do not play around with mavericks; It is important that you earn your close friends' affection and that you rely on their collaboration. You slowly become more aware of other people's reasons, of their desires and their concerns. Your destiny may be influenced by relationships. If you had a tendency to provoke people or events, now you have gained complementary qualities: diplomacy and human tact, cleverness in the art of reconciling opposite views. It is true that it required a huge personal effort!

Lilith or the Dark Moon

The Black Moon is the spark of refusal and distance that is dormant in all of us. Depending on the sign where she is found in your chart, she highlights the desire to transform and to sublimate a part of your life. The Black Moon is unfathomable and mysterious. She gives a different dimension to the sector she touches. Her manifestations are subtle; nonetheless, she is powerful, implacable, demanding to the extreme... The Black Moon is also called Lilith. She is the inner flame of your heroism and insubordination.

Your refusals are irrevocable: you may show violence when the situation is stuck... When facts hamper your aspirations, when everything does not seem to start moving soon, you tend to force your ways through events, regardless of the price to be paid. Your strengths and your weaknesses stem from all that: you may exercise a misplaced extremism, claiming great causes, whereas order can be restored in the simplest of ways. However, better than anyone else, you know how to maintain the pressure whenever it is needed, when the desire for deep changes takes precedence over submission or abdication.

The Part of Fortune in House

The Part of Fortune is a very ancient fictitious point that depends on the lunar phase at the time of birth. The astrological house tenanted is particularly strengthened. In your chart, the Part of Fortune is in the 5th house: to you, success means to create, to produce a fruit or a work, or to give birth to a child. Being in this world does not content you; you need "to do", to design, to live hand-to-hand with your surroundings. You are sensitive to power and you want to arouse esteem and admiration in your entourage.

Retrograde Planets

The karmic tradition insists on the issues related to the so-called retrograde planets. They are considered to be the inheritance of a past that was not well experienced, a sort of unfinished business. The interpretations of the retrogradation may seem negative or excessive to you. However, you may relate to a scenario that you have often and repeatedly experienced... as if you underwent several setbacks that all have the same cause. Until the day you become aware of it and you can free yourself from it! Through the slow integration of these planetary energies, you will be able to overcome your difficulties and to pay your karmic debt. Actually, each retrograde planet highlights an opportunity for evolution. Nothing can be achieved without the will to grow spiritually and to defeat your own demons.

Uranus was retrograding on the day of your birth: you have the soul of a rebel and your behaviour may often be tyrannical or extremist. Your manner has brought you setbacks. You lack the flexibility that spares you the pain of forcing your ways through events. The danger may be that you get trapped into rigid patterns and into personal logics incompatible with others'. This is precisely what your life's lesson is about: as years go by, your judgments are more qualified and your attitudes become less cut-and-dried, less stubborn. You must lose the essentially individualistic character of your childhood and be more open to other people's ideas and problems. In other words, a path of love. Without losing your remarkable resolution, you must practice some form of renunciation and be sensitive to various logics that constitute the wealth of your social life.

Neptune retrograding concerns spirituality. You may have expressed early in life a few reluctances about the subtle world of faith. You may have ignored destiny's signs and winks and you preferred to stick to your certainties, to a rigorous and objective control of your life. You dread your own aspirations and you readily trust others': this causes a lack of autonomy and the feeling that you may not receive as much as you give. However, several delusions teach you that you must relativize your calculating and methodical attitude and open up to the irrationality of love in order to find an inner and more spiritual progression. Embracing the invisible is a process that unfolds as years and experiences go by. Your own generosity increases as you become aware of your entourage's generosity.

Pluto retrograde suggests power issues and mishandled relations: for you, everything comes down to power struggles, submission and domination, Machiavellian manoeuvres, including within your couple... The results are complex behaviours and an obsession for the power to influence people. Yet, life teaches that you must simplify your relations and adopt more transparent attitudes and healthier desires... As years go by, you will tend towards more simplicity and you will slowly discover that human energy can, and must, be at the service of the good, or of well being, in compliance with our individual progression.

N.B: modern astrology attaches less and less importance to the principles of retrograding planets.

Conclusion

A few remarks are needed here in order to allow you to fully take advantage of your astrological portrait: firstly, do not forget that a birth chart is also a photograph of the sky at birth and a structure that not only contains the personality's characteristics, but also its potential evolution.

We all know that, in real life, people begin to know themselves when they are in their forties, or even later. Likewise, several traits of character in a portrait may seem surprising: in most cases, it means that such features are not yet developed.

Some personalities reveal themselves late in life, whereas others are more precocious. It must be remembered that psychological structures are in a state of continuous evolution because they are influenced by unfolding events and gradual maturity. We can never underline strongly enough the "mobile" nature of the personality, throughout a lifetime.

On the other hand, it is difficult to discriminate what is "already present" at this moment in your life when you are reading your chart's interpretation, from what will appear later in the logic of your evolution: you must sort out all the pieces of information provided and, in most cases, you will see that your astrological portrait is helpful for your endeavours to know yourself better.

Finally, several readings of an astrological portrait are usually necessary in order to absorb all its different meanings and to evaluate the relevance of each character trait.

In any case, better self-knowledge obviously contributes to faster personal blossoming, and it is undoubtedly one of astrology's major roles: contributing to know oneself better, in order to improve more rapidly, to deal with one's weaknesses and to avoid its drawbacks, and to take advantage of one's assets as efficiently as possible.
