



**Jimi Hendrix's  
Astrological Portrait**





## Jimi Hendrix's Astrological Portrait



<b>Introduction</b>	<b>2</b>
<b>Your Planets, Houses, Aspects, and Natal Chart</b>	<b>4</b>
<b>Preamble</b>	<b>7</b>
<b>Your Planetary Repartitions</b>	<b>8</b>
<b>Your Dominant Modes and Elements</b>	<b>9</b>
<b>Your Dominants: Planets, Signs and Houses</b>	<b>10</b>
<b>Your Style, Behaviour, and Peculiarities</b>	<b>15</b>
<b>Your Sensitivity</b>	<b>18</b>
<b>Your Affectivity</b>	<b>19</b>
<b>The Way You Take Action and Your Sexuality</b>	<b>22</b>
<b>Your Intellect and Your Communication Style</b>	<b>23</b>
<b>Your Goals, Motivations, Career, and Destiny</b>	<b>25</b>
<b>Your Assets and Your Part of Joviality</b>	<b>27</b>
<b>Your Serious Side</b>	<b>28</b>
<b>A Few Special Points</b>	<b>28</b>
<b>Your Isolated Planets</b>	<b>29</b>
<b>Annex 1: Your Minor Dominants</b>	<b>31</b>
<b>Annex 2: Karmic Study</b>	<b>35</b>
<b>Conclusion</b>	<b>38</b>



# Jimi Hendrix's Astrological Portrait

## Introduction

To fully benefit from this portrait, we suggest that you read its introduction and its preamble carefully, and then that to take the time to soak up the interpretations of each chapter. Given the large number of texts, which mirrors the human being's complexity, you may need to go through the contents several times, so as to get a good grasp of their meaning and to know yourself better. This will reward your patience.

The purpose of this report is to describe your psychological portrait and to highlight the most fundamental features on the personal area. The report begins with the analysis of your planetary dominants and outlines your personality's general traits before going into further detail. Minor dominants are analysed at the end of Annex 1, for purposes of clarity. Your report then delineates the various facets of your personality:

In general, even when relationships are not involved, we express ourselves and we feel according to our character and our personal motivations: this is indicated by the Ascendant and the Sun sign which both give details on the way we function. They shed a tremendously important light which allows to figure out your personality. Here, we describe your Sun sign (your inner self), your Ascendant (your behaviour as seen by others), and the ruler of the Ascendant (interesting additional pieces of information about the style of your personality). These descriptions alone cover nearly a third or a half of your psychological signature, depending on your natal chart characteristics.

Then, we address your sensitivity, or in other words, the way you receive things and how you express your emotions ; it works as a constant filter for all your exchanges, even when it becomes a more secondary element in your amorous relationship, because at that moment, affectivity prevails. Sensitivity is the way you perceive things, it is your radar, your daily mood, and at the same time, it indicates how you react to your entourage, on a daily basis. It is what others immediately see of you. In the second paragraph, we explain in which areas of life your sensitivity and your emotions are strongest, therefore, where you are most vulnerable.

After this, it is your affectivity, the way you love and how you charm, that comes into play as soon as you fall in love: the first part indicates its basic structure or its main form. The second part describes the areas where it is best expressed and how you display it, according to your personality.

A third fundamental area deals with your mode of action and your sexuality: how you behave, how you manage to obtain what you want, what kind of desires you have. There are twelve possibilities, very

different from one another. The study discloses the specific one that applies to you. In the second paragraph, we explain in which life areas you may most efficiently take advantage of your capacity for action and for conquest.

Your ways of communicating and of thinking are obviously among the major elements that must be integrated into the delineation and the description of your personality. Indeed, they influence your general behaviour and may modify or enhance the image your project (for instance, extraversion may “compensate” a weak affectivity, but a huge number of cases are possible). An additional chapter indicates the favourite areas where you enjoy communicating, thinking and meeting with people.

Besides, we analyze an even more personal aspect that is important to define and understand what may occur within your couple: each of us have a centre of interest, a privileged manner to be fulfilled or to achieve our destiny; this main motivation is indicated by the positions of your Sun and your chart ruler in the astrological houses and we provide you with its detailed description.

A natal chart contains the potential for specific fulfilment and a whole range of assets, protections and qualities. How does the lucky factor manifest in your personality? In which area can you best exploit your qualities? The answers are precisely revealed to you in this chapter.

On the other hand, we all feel in us a part of vulnerability, doubts and fears. How does this part of solemnity or serious side play out? How is it possible to handle it in order to evolve and to get rid of useless elements? All this information is provided to you in these two paragraphs.

Then, you can discover three additional traits of your personality that must be considered as secondary ones. They deal with your predispositions, which means that they need to be triggered by external events because they are not influenced by your will; let's call it a part of fate. Please, bear in mind that your destiny can unfold only in accordance with what you are: therefore, even if they belong to your more unconscious self, these characteristics are parts of you, definitely.

The karmic chart complements the psychological portrait or natal chart. It is based on the positions of the Lunar Nodes, the Black Moon, and the Part of Fortune. These elements of the chart, sometimes referred to as fictitious points, provide information about the spiritual meaning of your destiny. Owing to the fact that we all have in us acquired knowledge and the urge to go on a quest, our life is an evolutionary journey... However, these texts must be read with great caution: this is the reason why you will find this analysis in the Annex 2 of your report.

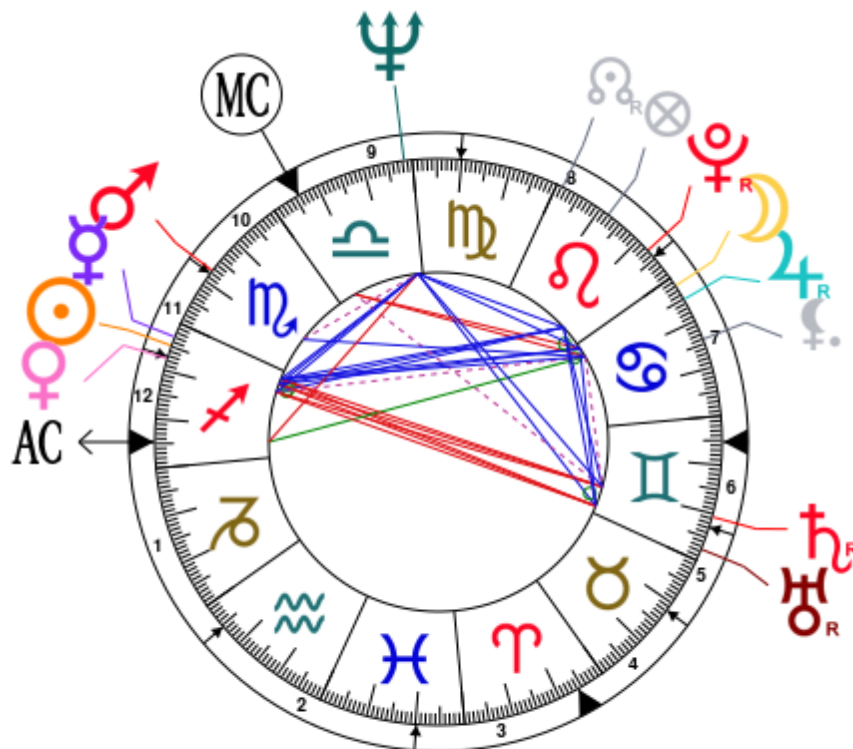


# Your Planets, Houses, Aspects, and Natal Chart

Jimi Hendrix, born November 27, 1942, at 10:15 AM, Seattle (King), Washington [122.19W ; 47.36N ; 7W00]

Natal Planets			In House	Natal Houses (Placidus)		
☉ Sun	4°50'	♐ Sagittarius	House 11	House 1	24°41'	♐ Sagittarius
☾ Moon	28°05'	♋ Cancer	House 7	House 2	5°20'	♒ Aquarius
☿ Mercury	2°57'	♐ Sagittarius	House 11	House 3	20°12'	♓ Pisces
♀ Venus	7°36'	♐ Sagittarius	House 12	House 4	24°12'	♈ Aries
♂ Mars	17°31'	♏ Scorpio	House 11	House 5	18°14'	♉ Taurus
♃ Jupiter	24°52' R	♋ Cancer	House 7	House 6	7°11'	♊ Gemini
♄ Saturn	9°22' R	♊ Gemini	House 6	House 7	24°41'	♊ Gemini
♅ Uranus	2°28' R	♊ Gemini	House 5	House 8	5°20'	♌ Leo
♆ Neptune	1°40'	♎ Libra	House 9	House 9	20°12'	♍ Virgo
♇ Pluto	7°11' R	♌ Leo	House 8	House 10	24°12'	♎ Libra
♁ Node	28°44' R	♌ Leo	House 8	House 11	18°14'	♏ Scorpio
♇ Lilith	15°56'	♋ Cancer	House 7	House 12	7°11'	♐ Sagittarius
AS AS	24°41'	♐ Sagittarius				
MC MC	24°12'	♎ Libra				

In keeping with the common practice, we consider that a planet posited within 1 degree of the next house belongs to that house. We allow an orb of 2 degrees for the ASC and the MC.



## List of Your Active Planetary Aspects

Please find below the list of all the active inter-aspects which are interpreted in this report, in addition to your planets in sign, in house, and all your planetary dominants. Since the aspects between slow-moving planets are of a collective nature, they are not displayed, in compliance with our interpretation rules.

- ★★★★★ Sun trine Moon, orb 6° 45'
- ★★★★★ Sun conjunction Mercury, orb 1° 53'
- ★★★★★ Sun conjunction Venus, orb 2° 45'
- ★★★☆☆ Sun opposite Saturn, orb -4° 32'
- ★★★☆☆ Sun opposite Uranus, orb -2° 21'
- ★★★★★ Sun sextile Neptune, orb 3° 09'
- ★★★★★ Sun trine Pluto, orb -2° 2'
- ★★★★★ Moon trine Mercury, orb 4° 52'
- ★★★★★ Moon conjunction Jupiter, orb 3° 13'
- ★★★★★ Moon sextile Uranus, orb -4° 23'
- ★★★★★ Moon sextile Neptune, orb 3° 35'
- ★★★★★ Moon conjunction Pluto, orb 9° 05'
- ★★★☆☆ Moon square Midheaven, orb -3° 52'
- ★★★★★ Mercury conjunction Venus, orb 4° 39'
- ★★★★★ Mercury trine Jupiter, orb 8° 05'
- ★★★☆☆ Mercury opposite Saturn, orb -6° 25'
- ★★★★★ Mercury opposite Uranus, orb -0° 28'
- ★★★★★ Mercury sextile Neptune, orb 1° 16'
- ★★★★★ Mercury trine Pluto, orb -4° 13'
- ★★★☆☆ Venus sesqui-quadrate Jupiter, orb -2° 15'
- ★★★★★ Venus opposite Saturn, orb -1° 46'
- ★★★☆☆ Venus opposite Uranus, orb -5° 07'
- ★★★★★ Venus sextile Neptune, orb 5° 55'
- ★★★★★ Venus trine Pluto, orb 0° 25'
- ★★★★★ Mars trine Jupiter, orb -7° 2'
- ★★★☆☆ Mars semi-square Neptune, orb 0° 51'
- ★★★☆☆ Jupiter semi-square Saturn, orb 0° 29'
- ★★★☆☆ Jupiter inconjunction Ascendant, orb -0° 1'
- ★★★★★ Jupiter square Midheaven, orb -0° 39'
- ★★★☆☆ Saturn sesqui-quadrate Midheaven, orb -0° 1'
- ★★★☆☆ Neptune square Ascendant, orb -6° 59'

## Meaning of Stars

Stars indicate the strength of the aspects. Two solid coloured stars (there are half-stars also), mean that the aspect is powerful enough to be noticed at the first reading.

We strongly advise that you read the paragraphs displaying less than two stars later on, after you have absorbed the full import of the other texts.

The yellow colour indicates a soothing and conciliating aspect, and the red colour, a dynamic and tense aspect. The red aspects enable you to evolve, to take action, and to learn to turn your "weaknesses" into assets through your life experiences. The yellow aspects are innate strengths on which you rely in order to grow better with the former...

## Preamble

When interpreting a natal chart, the best method is to start gradually from general features to specific ones. Thus, there is usually a plan to be followed, from the overall analysis of the chart and its structure, to the description of its different character traits.

In the first part, an overall analysis of the chart enables us to figure out the personality's main features and to emphasize several points that are confirmed or not in the detailed analysis: in any case, those general traits are taken into account. Human personality is an infinitely intricate entity and describing it is a complex task. Claiming to rapidly summarize it is illusory, although it does not mean that it is an impossible challenge. It is essential to read a natal chart several times in order to absorb all its different meanings and to grasp all this complexity. But the exercise is worthwhile.

In brief, a natal chart is composed of ten planets: two luminaries, the Sun and the Moon, three fast-moving or individual planets, Mercury, Venus and Mars, two slow-moving planets, Jupiter and Saturn, and three very slow-moving planets, Uranus, Neptune and Pluto. Additional secondary elements are: the Lunar Nodes, the Dark Moon or Lilith, Chiron and other minor objects. They are all posited on the Zodiac wheel consisting of twelve signs, from Aries to Pisces, and divided into twelve astrological houses.

The first step is to evaluate the importance of each planet. This is what we call identifying the dominant planets. This process obeys rules that depend on the astrologer's sensitivity and experience but it also has precise and steady bases: thus, we can take into account the parameters of a planet's activity (the number of active aspects a planet forms, the importance of each aspect according to its nature and its exactness), angularity parameters; (proximity to the four angles, Ascendant, Midheaven, Descendant and Imum Coeli or Nadir, all of them being evaluated numerically, according to the kind of angle and the planet-angle distance) and quality parameters (rulership, exaltation, exile and fall). Finally, other criteria such as the rulership of the Ascendant and the Midheaven etc. are important.

These different criteria allow a planet to be highlighted and lead to useful conclusions when interpreting the chart.

The overall chart analysis begins with the observation of three sorts of planetary distributions in the chart: Eastern or Western hemisphere, Northern or Southern hemisphere, and quadrants (North-eastern, North-western, South-eastern and South-western). These three distributions give a general tone in terms of introversion and extraversion, willpower, sociability, and behavioural predispositions.

Then, there are three additional distributions: elements (called triplicity since there are three groups of signs for each one) - Fire, Air, Earth and Water - corresponding to a character typology, modality (or quadruplicity with four groups of signs for each one) - Cardinal, Fixed and Mutable - and polarity (Yin and Yang).

There are three types of dominants: dominant planets, dominant signs and dominant houses. The novice thinks astrology means only "to be Aries" or sometimes, for example, "to be Aries Ascendant Virgo". It is actually far more complex. Although the Sun and the Ascendant alone may reveal a large part of the character - approximately a third or a half of your psychological signature, a person is neither "just the Sun" (called the sign) nor just "the first house" (the Ascendant). Thus, a particular planet's influence



may be significantly increased; a particular sign or house may contain a group of planets that will bring nuances and sometimes weaken the role of the Ascendant, of the Sun sign etc.

Lastly, there are two other criteria: accentuations (angular, succedent and cadent) which are a classification of astrological houses and types of decanates that are occupied (each sign is divided into three decanates of ten degrees each). They provide some additional informations.

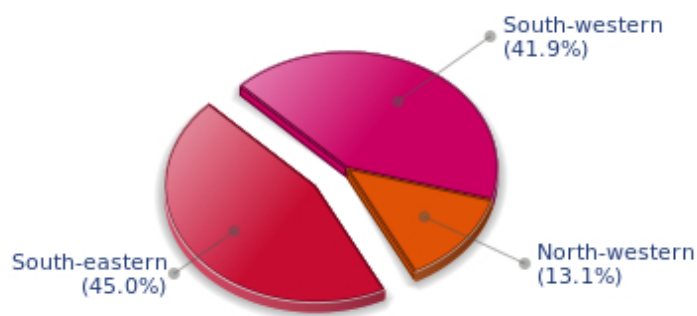
These general character traits must not be taken literally; they are, somehow, preparing for the chart reading. They allow to understand the second part of the analysis, which is more detailed and precise. It focuses on every area of the personality and provides a synthesis of all the above-mentioned parameters according to sound hierarchical rules.

As explained in the introduction of your Psychological Portrait report, minor dominants are analysed at the end of Annex 1, for purposes of clarity.

## Your Planetary Repartitions

Each quadrant is a combination of the four hemispheres of your birth chart and relates to a character typology. The Southern hemisphere – the top of your chart, around the Midheaven – is associated with extraversion, action, and public life, whereas the Northern hemisphere prompts to introversion, reflexion, and private life. The Eastern hemisphere – the left part, around the Ascendant – is linked to your ego and your willpower, whereas the Western hemisphere indicates how other people influence you, and how flexible you are when you make a decision.

### Your Four Quadrants

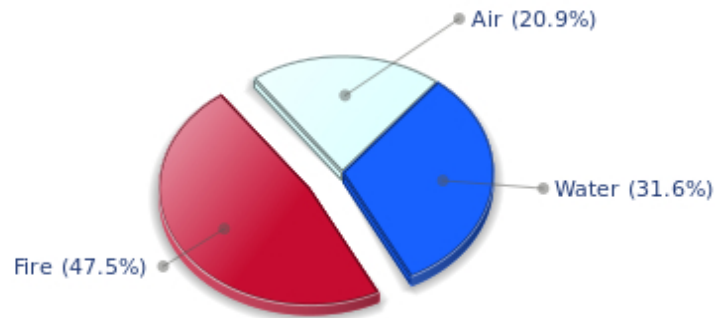


Jimi Hendrix, the diurnal South-eastern quadrant, consisting of the 10th, 11th and 12th houses, prevails in your chart: assertion and goals achievement are at the centre of your concerns. You are very keen to implement your dreams and your plans. You achieve your ambitions as soon as possible, whether through an active social life, highly charged friendly relations, or an urge to take actions in order to reap - in the eyes of the world, of course - the rewards of your dynamism. It is likely that spirituality or humanitarian actions are part of your motivations, sometimes at the price of some degree of isolation.

## Your Dominant Modes and Elements

Jimi Hendrix, here are the graphs of your Elements and Modes, based on planets' position and angles in the twelve signs:

### Your Four Elements



Jimi Hendrix, Fire is dominant in your natal chart and endows you with intuition, energy, courage, self-confidence, and enthusiasm! You are inclined to be passionate, you assert your willpower, you move forward, and come hell or high water, you achieve your dreams and your goals. The relative weakness of this element is the difficulty to step back or a kind of boldness that may prompt you to do foolish things.

The predominance of Water signs indicates high sensitivity and elevation through feelings, Jimi Hendrix. Your heart and your emotions are your driving forces, and you can't do anything on Earth if you don't feel a strong affective charge (as a matter of fact, the word "feeling" is essential in your psychology). You need to love in order to understand, and to feel in order to take action, which causes a certain vulnerability which you should fight against.

Earth qualities are under-represented in your chart, with only 0.00% instead of the average 25%. Deficiency in Earth may indicate that you have no interest in material and concrete values. It is likely that you live too much in your heart or in your mind, or even in your enthusiasm! The fact remains that you may end up in tricky situations, due to your lack of good sense or forethought: material life is unavoidable even if you are rather idealistic, dreamy, or easily content. You must tackle concrete life necessities, for fear of... being forced to cope with them, later, in much more unpleasant ways!

The twelve zodiacal signs are split up into three groups or modes, called quadruplicities, a learned word meaning only that these three groups include four signs. The Cardinal, Fixed and Mutable modes are more or less represented in your natal chart, depending on planets' positions and importance, and on angles in the twelve signs.

## Your Modes



The Mutable mode is the most emphasized one in your natal chart, Jimi Hendrix, which indicates a mobile character that is curious and thirsty for new experiences and evolution. You are lively and flexible, and you like to react quickly to solicitations, but don't confuse mobility with agitation, since this is the danger with this configuration - and with you, stagnation is out of the question. Security doesn't matter as long as you are not bored. You optimize, you change things, you change yourself... all this in a speedy way.

## Your Dominants: Planets, Signs and Houses

The issue of dominant planets has existed since the mists of time in astrology: how nice it would be if a person could be described with a few words and one or several planets that would represent their character, without having to analyse such elements as rulerships, angularities, houses, etc!

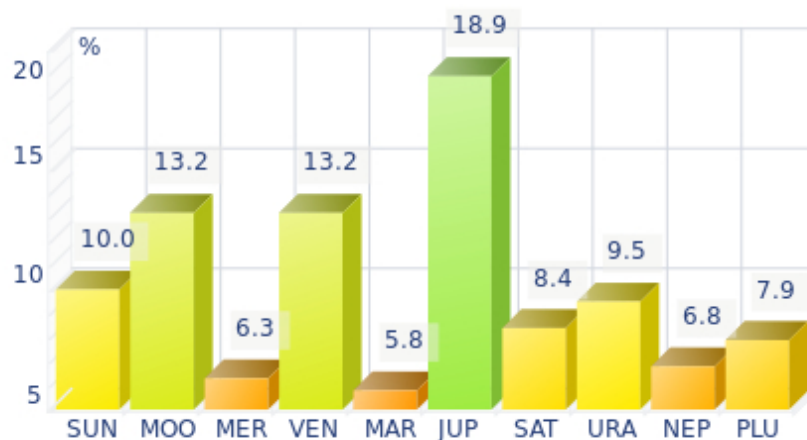
The ten planets - the Sun throughout Pluto - are a bit like ten characters in a role-play, each one has its own personality, its own way of acting, its own strengths and weaknesses. They actually represent a classification into ten distinct personalities, and astrologers have always tried to associate one or several dominant planets to a natal chart as well as dominant signs and houses.

Indeed, it is quite the same situation with signs and houses. If planets symbolize characters, signs represent hues - the mental, emotional and physical structures of an individual. The sign in which a planet is posited is like a character whose features are modified according to the place where he lives. In a chart, there are usually one, two or three highlighted signs that allow to rapidly describe its owner.

Regarding astrological houses, the principle is even simpler: the twelve houses correspond to twelve fields of life, and planets tenanted any given house increase that house's importance and highlight all relevant life departments: it may be marriage, work, friendship etc.

Jimi Hendrix, here is the evaluation diagramme for your planets:

## Your Dominant Planets



The three planets that are most highlighted in your chart are Jupiter, the Moon and Venus.

Jupiter, the planet of expansion, organization, power and benevolence, is quite emphasized in your chart. Like any Jupiterian, you are warm, open, sociable, consensual, active and optimistic. You can use your self-confidence to erase differences of opinion, and you leave the task of analyzing and perfecting things to specialists. Your role, and you know it since you were young, is to gather, to demonstrate your synthesizing and conciliatory mind, and to naturally reap its fruits - power.

You appreciate legality, social order but also order in general. With you as a leader, every plan or human entity can be organized and structured. You excel at supervising. The Jupiterian type is indeed the politician par excellence, and a positive Jupiter in your chart is synonymous with good integration into society, whatever the chosen path.

Is this idyllic picture really perfect? Certainly not: each planet's typology has its own weaknesses. One of yours is pride, like the Solarian, but your will of expansion at all costs may generate a form of exaggeration in everything, endless pleasure, inappropriate self-confidence that could lead you to rough materialism and the thirst for absurd material comfort - in the worst cases, of course.

The Moon is one of the most important planets in your chart and endows you with a receptive, emotive, and imaginative nature. You have an innate ability to instinctively absorb atmospheres and impressions that nurture you, and as a result, you are often dreaming your life away rather than actually living it.

One of the consequences of your spontaneity may turn into popularity, or even fame: the crowd is a living and complex entity, and it always appreciates truth and sincerity rather than calculation and total self-control.

As a Lunar character, you find it difficult to control yourself, you have to deal with your moods, and you must be careful not to stay passive in front of events: nothing is handed on a plate, and although your sensitivity is rich, even richer than most people's, you must make a move and spare some of your energy for... action!

With Venus among your dominant planets, one of your first reflexes is... to please! Your look, your

charm, and your seduction are omnipresent elements in your behaviour.

Your approach to things is connected to your heart, and for you, no real communication can flow if your interlocutors exude no sympathy or warmth. Cold and logical reasoning, clear thoughts and good sense are not important to you: if there is no affective bond with your environment, no connection can be established with the Venusian that you are, and nothing happens.

You have a strong artistic side, and you never neglect subjective but clear concepts such as pleasure, beauty, and also sensuality. However, sometimes to the detriment of efficiency, durability, logic, and... detachment.

Your Dominant Signs



In your natal chart, the three most important signs, delineated according to the above-mentioned criteria, are, in decreasing order of strength, Sagittarius, Cancer and Libra. They are often prominent because your Ascendant and your Sun are posited there. However, it is not always the case: it may be because they are occupied by a cluster of planets, by a planet near an angle other than the Midheaven and the Ascendant, or because two or three planets are very active and form numerous aspects from these signs. Therefore, you partly take on the three signs' characteristics, which are somehow superimposed on your natal chart, and all the more so if any of the signs in question is highlighted.

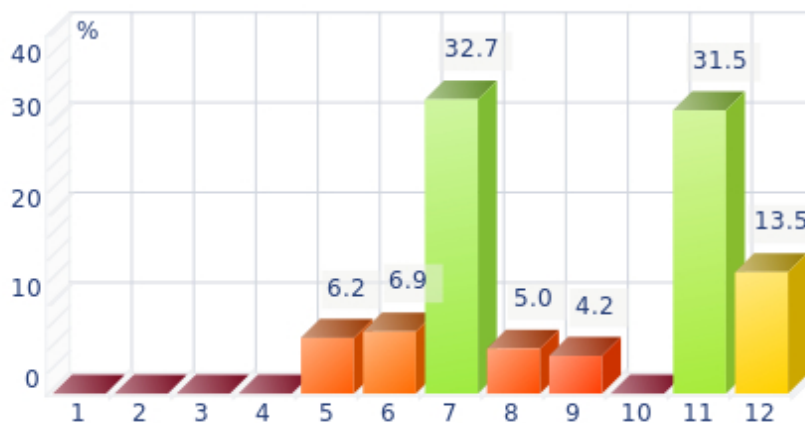
Sagittarius, an adventurous and conquering fire sign, is dominant in your chart: you are enthusiastic, enterprising, optimistic, very sociable, and mobile - you have itchy feet, both physically and mentally. Nobody gets bored with you because you are always planning things and suggesting excursions, at least... when you are around and not already gone on a trip! Obviously, so many movements for one man may scare people off, and some of them may even criticize your brutality or your tendency to lose your temper, but you are so warm and genuine, so expansive, isn't this a good thing? And all the more so, since your sense of humour is overwhelming...

Cancer is one of your dominant signs and endows you with imagination and exceptionally shrewd sensitivity. Although suspicious at first sight - and even at second...- as soon as you get familiar with people and let them win your confidence, your golden heart eventually shows up, despite your discretion and your desire for security that make you return into your shell at the slightest alert! Actually, you are a poet and if you are sometimes blamed for your nostalgia and your laziness, it is because your intense inner life is at full throttle...



With Libra as a dominant sign in your natal chart, you love to please, to charm, and to be likeable. Moreover, you are naturally inclined towards tolerance and moderation, as well as elegance and tact, as if you were meant to please! Of course, you always find malcontents who criticize your lack of authenticity or of courage and your half-heartedness, but your aim is to be liked, and in this field, you are an unrivalled champion!

### Your Dominant Houses



Houses 7, 11 and 12 are the most tenanted ones in your natal chart. To compute their strength, planets and angles are weighed according to various astrological criteria such as swiftness, activity, angularity, rulership etc. From the analysis of the most tenanted Houses, the Astrologer deduces the fields of activity that are most relevant to you, be it because of what you are experiencing, or what you may experience in the future, or because of your deep inner motivations.

Your 7th house is one of your dominant houses: it symbolizes other people, marriages, associations, contracts, and partnerships. Your personal achievement and maybe your problems - depending on the rest of your chart - are mainly influenced by your rapports with others, the area in which you tend to commit yourself a lot. You appreciate communication, and you give importance to others' opinions. Success requires the support of others, which seems obvious and natural to you. Your marriage generally contributes to your fulfilment.

The 11th house is among your dominant houses. Therefore, social life and friendships are very important, even strategic to you.

You think that group activities, whether in the humanitarian field or simple gatherings of friends, are endless sources of inspiration and of enjoyment, provided that there are no tensed aspects in this sector. Everything human is important to you, often more important than your own success, unless your 10th house is also powerful.

The 12th house is emphasized in your chart: like the 8th house, it has a rich and complex meaning. Although its bad reputation is likely to scare most readers in the first place - it is indeed the house of hidden or isolated places, of solitude, of ordeals or enemies - it can also mean that a part of your life is very deep and intense. If your achievements are not visible in the public eye, you may fulfil yourself in a different but equally important way: you may be involved in secret activities, humanitarian causes, and projects in favour of disadvantaged people. You are likely to work in quiet and remote places. In many

cases, you will gain from these hidden activities as many treasures as people who have a more public destiny. It may be because you sublimate your work, or only because you successfully carry out your task within your environment. There is no such things as a good or a bad house, because each area of life is necessary in its own way, and we need all of them, if we are to improve spiritually.

## Your Style, Behaviour, and Peculiarities

What is commonly known as "sign" indicates the position of the Sun in the Zodiac. The Sun highlights all the characteristics of the sign he tenants. According to astrology traditional rules, these characteristics are all the more pure and exact when the Sun is strong in the sign, or when the sign is particularly highlighted within the chart. Here, we indicate the pure characteristics of the sign but you must bear in mind that they may only shed a light on a particular aspect of your personality. Indeed, the sole sign of the Sun, or of the Ascendant, can never describe an astrological chart because it depends on the degree of strength of the said sign in your chart.

Another important point must be underlined. Contrary to the Ascendant, which clearly describes your appearance, your vitality, your physical constitution, your spontaneous behaviour and the image you project, your Sun sign describes your inner self, which you may not completely be aware of, and which may emerge gradually as you mature: it is about your inner personality that you reveal only to the members of your entourage whom you trust. The Sun sign is likely to be the final form of your personality, once it has evolved in line with the energies of the other parts of your chart, the beginning of which is seen in the Ascendant, your external "bark".

The Ascendant is one of the major components of your natal chart. It is the zodiacal sign that rises in the East at the very moment of your birth. To calculate it, it is therefore necessary to know your exact time of birth.

It provides with a wealth of information on your personality. It is one of the key features that allows the analysis of several parts of you, such as your appearance, your character as it is initially perceived and your immediate behaviour. It describes the external aspect of your personality which you always display, but it also describes your physical constitution in the long-term, in other words, your health.

Please be aware that, in spite of the importance of the Ascendant, the accuracy of its description depends on how strongly highlighted it is in your natal chart. We use the entire set of astrological rules to assess the strength of the Ascendant. In most cases, the Ascendant is as revealing as your "sign", i.e., the sign where the Sun is posited at the time of birth.

## You were born under the sign of Sagittarius and your Ascendant is in Sagittarius

Before broaching the details of the meaning of your Sun and your Ascendant, as a preamble, we offer a brief generic interpretation of their combination in your chart:

You are twice a Sagittarius, and your behaviour is exactly the same, when you are in society and in private settings. You adamantly stick to your independence and your freedom of action. You have itchy feet because you are interested in all the numerous things which remain to be explored in faraway trips, both intellectual and concrete ones. As a Fire sign, Sagittarius is endowed with optimism and the will to accomplish spiritual and physical conquests, recalling the wild nature of the horse which is difficult to tame. Furthermore, if as a Mutable sign, Sagittarius hardly understands the virtues of patience and endurance, it always makes it a point to acknowledge the most different and exotic points of view. Indeed, as it keeps on including external influences, it sometimes confuses its own ideas with those gathered from its readings or its encounters. You are philosophical, intuitive, and benevolent, and you

want to civilise social relations to the best of your ability, but at times, this federating and diplomatic tendency may be interpreted as condescending elitism. This is quite paradoxical because imposed tolerance may conceal a form of tyranny. The solution is to cultivate your enthusiasm without requesting too much from other people.

### **The sign and the Ascendant in Sagittarius**

Psychologically speaking, your nature is extroverted and independent, oriented towards expansion and sociability. You have the soul of a leader, energetic and active. Your charisma and your drive are fully integrated into the collective life. Indeed, as an action-oriented fire sign, you challenge yourself and you succeed in accomplishing the task straight away. Sagittarius is hard to follow because his spirit and his independent mind constantly prompt him to go further and higher.

As you are born under this sign, you are charismatic, fiery, energetic, likeable, benevolent, tidy, jovial, optimistic, extroverted, amusing, straightforward, demonstrative, charming, independent, adventurous, straightforward, bold, exuberant, freedom-loving. But you may also be irascible, selfish, authoritarian, inconsistent, unfaithful, brutal, unreliable, reckless, tactless or unpleasant.

In love, Sir, you are the mobile fire that consumes everything in your way. You are constantly in love, you are passionate and your energy and your extroversion create a love life that could fit a serialized novel: mobile and changing, you are not the man of a single woman, at least until you find the person who resists you and who arouses a love powerful enough to tame you.

Your need for freedom and independence is so strong that it is difficult for you to settle down. Many break-ups are caused by a feeling of smothering, when your love of the moment becomes too demanding. However, since you are also unstable, you often patch up as if nothing had happened and you will be forgiven: this paradox comes from your explosive mixture comprising ardour, energy, benevolence and fickleness.

Similarly to the way in which you run your business, you will settle down when you reach your forties or your fifties. You become a good husband and a good father, well acquainted with the rules of your society, full of contentment and joy. Your home will provide the room you need so that you do not feel imprisoned.

### **The ruler of your chart is in Cancer**

The ruler of the Ascendant, also referred to as the chart ruler, brings a few interesting nuances to the meanings provided by the Sun and the Ascendant. The sign in which the ruler of the Ascendant is posited fine-tunes the style of personality described by the Sun and the Ascendant. It may strengthen it if the sign is identical to either of them.

The ruler of the Ascendant, Jimi Hendrix, is Jupiter. In the sign of Cancer, it enables you to grasp the surrounding ambience and impressions as if you were an emotional radar. Therefore, you may shift from enthusiasm to boredom or rejection, should you subtly sense that you are appreciated or spurned, even though your feelings are unfounded.

## Aspects to your Ascendant

Several planets form an aspect with your Ascendant, Jimi Hendrix. Therefore, in their specific way, they modify your behaviour and your personality, which do not take on the pure characteristics of your Sagittarius Ascendant only, but which are a blend of its characteristics with those of the said aspects.

### ★★★★★ Jupiter inconjunction Ascendant, orb -0° 1'

A dissonance between Jupiter and the Ascendant is not too serious, Jimi Hendrix. In some circumstances, it may cause your behaviour or your opinions to be a bit exaggerated when you are in society. Therefore, you may come across as too proud or excessive. It is up to you not to overdo, so as not to arouse your entourage's incomprehension. This excess may also translate into a marked taste for pleasures or good food...

### ★★★★★ Neptune square Ascendant, orb -6° 59'

Neptune is in dissonance with your Ascendant, Jimi Hendrix. You may have difficulties in controlling your emotions, and you tend to hesitate about the behaviour to adopt in society. In some circumstances, you distrust everyone, yourself and other people, without knowing the reason why. Keep your feet on the ground and do not allow your imagination to carry you too far away from sheer reality! No one nurtures bad intentions towards you. This is something you must realise if you do not want to get worked up about... nothing.



## Your Sensitivity

Affectivity and intuition are very developed, Jimi Hendrix, and you are very sensitive to your environment. You “feel” atmospheres, moods and other people's emotions and when you capture negative influences, a feeling of ill-being immediately overwhelms you, all the more so because your lively imagination may destabilize you as it amplifies your receptiveness. Your nature is anxious and you tend to worry for your entourage. You strive to offer them a reassuring family atmosphere, the much needed comforting and warm sort of cocoon where you can laze around, at will. Because you care so much for your family, they may think that you are intrusive and that you try to rule their life through subtle affective blackmail. Trust them... and also learn to have more confidence in yourself!

You are dependent on your relationships for a large part, Jimi Hendrix, and generally, you can open up only with people you are close to. Contacts are very important for you, however, you tend to listen to the one who spoke last. In fact you are easily influenced.

You will certainly find your dream wife and you will develop a close and intense relationship with her.

You are moody and impressionable. Your relationships with your audience are always put on a pedestal and you have a tendency to constantly change your personal image according to the persons you are dealing with and the reactions you get from them.

### ★★★★★ Moon conjunction Jupiter, orb 3° 13'

Why should one complicate one's life if it is possible to enjoy the simple joys of the present? This harmonic Moon-Jupiter aspect indicates a cheerful nature, which earns your entourage's liking and protects the balance of your intimate life. Your sociability is supported by your desire to smoothly adhere to a group, a social or family cell. You are fond of moments where you unwind and relax. You value your daily comfort and, to preserve it, you accept to play by the rules of privacy. When this aspect dictates your attitudes, you behave like a person easy to get along with... even though your personal demands, relegated to the backseat, come up again at top speed and force you to behave more in line with your inner needs.

### ★★★★★ Moon sextile Neptune, orb 3° 35'

This harmonious Moon-Neptune aspect indicates an exceptional receptivity. You are sensitive to ambiances and you can grasp what is at stake in any given situation. You can pick up things in the general atmosphere that the majority of people miss out. Your deep intuition allows you to feel the subtlest details, that « little nothing » which is the key to behavioural patterns. Inspiration is your guide and imagination accompanies your daily rhythms. Mysteries, psychology, esoterism, fantasy, the supernatural... one of these fields, at least, is of concern to you. You pay utmost attention to your inner life, to moments of tranquillity when you relax, when you allow your mind to wander at will. The danger is that you may seek refuge in the imaginary and that you shirk reality.

### ★★★★★ Moon sextile Uranus, orb -4° 23'

This harmonious Moon-Uranus aspect indicates that your well being depends on the original quality of your charm and on new-ness. You are not influenced by prevailing trends and fashion. You have a personal view of what a balancing private life should be. You enjoy unexpected situations, even extravagant ones. But if you feel that your living environment hampers your freedom, you suddenly change your attitudes and your habits. Independence is your true realm. You may show an exceptional inflexibility when your intimate life moves away from the patterns you need, deep down. Your entourage

must get used to your demands and to the values you are determined to keep with all your might and on which you are uncompromising. This determination does not allow for a laid-back attitude, or an indolence that so often causes degradations. You keep your own daily rhythms under control.

★★★★★ Sun trine Moon, orb 6° 45'

This aspect is a strong homogeneity factor: the image you project is in conformity with your real nature and does not upset your basic balance. This is probably the cause of your feeling at ease, your consistent behaviour and your determination to remain your true self, regardless of external pressures and whatever is expected from you. At best, your will and your sensitivity are in harmony, your unconscious abilities are mobilized and controlled by your conscious will, with no imbalance. However, it is important to avoid the traps of self-satisfaction that would be harmful to your real exchanges and would lock you up in comfortable and rigid schemes. It is possible to remain natural and yet, not be content with the sole well being of those who never cheat themselves.

★★★★★ Moon conjunction Pluto, orb 9° 05'

You are a riddle for people... and for yourself. This harmonious Moon-Pluto aspect arouses your desire to understand and to express elements hidden in your unconsciousness. You are interested in the occult, in laws that rule beings and things in the dark. You like to pull strings and to manipulate situations without people's knowledge in order to remain mysterious. You feel fine when you are not in the limelight, but you intervene in the dark, with subtlety. Your intimate behaviour reveals the distance that you strive to keep in order to protect your inner life. You gladly cultivate the angel of the bizarre, even in your life habits and in your daily rhythms.

## Your Affectivity

In your chart, the Sun and Venus are both in Sagittarius. You are a Sagittarius to your fingertips and you think first in terms of independence, sentimental excitement and discovery. You are fond of love without border and you feel in harmony with people who elude your senses and your reason. Your partner does not seem to have anything in common with you? It does not matter! A couple is the most wonderful crucible for enrichment within a mutual respect for everyone's differences. However, it would not be right to believe that you have no taboo or social reference. It is certain that your open-mindedness and your spontaneity prompt you to accept, to love and to cultivate differences. But more than anyone, you can go beyond conventions without upsetting them, and you can surprise without harming... Your paradox: you play with moral sense without being amoral. In love, you are a refined gangster, a "gentleman-heartbreaker". The forte of this configuration is the ability to evolve and to give your couple a new momentum when it is needed. It is most unlikely that you ever let the flames of passion fade. Better spread the news. Whoever is a homebody will be in trouble!

On the affective plane, Jimi Hendrix, you are open, straightforward, spontaneous and you make friends easily because your enthusiasm is expressed jovially, directly and is respectful of well-established moral values. In some cases, you may be opposed to your natal environment or to your family because of your taste for freedom, exoticism or all forms of independence and emancipation. Your feelings are burning and you often get carried away quickly. However, your ability to make friends easily is likely to favour some instability; in other words, faithfulness is not your top priority as long as you have not yet found your soul mate. Ideally, for you, life together must have some degree of mobility and include travels and fresh air. Within your relationship, you need to feel freedom and independence, which you need since

your childhood. Under such conditions, harmony and faithfulness can be achieved.

Jimi Hendrix, whether you want it or not, you are the illustration of the famous French saying that: "To live happily, let's live in hiding!" Nothing suits you better than tranquillity, peace and, finally, to some extent, privacy in your love life. It may be caused by many different reasons, sometimes shyness, romanticism, modesty etc. but in any case, you are prone to experience love better in the clandestine mode. The legalization of your union, so often sought after by others, is something you dread more than anything else. You are romantic, secretive, even melancholy, sometimes, and you tend to sublimate or to spiritualize your feelings, with the effects of bringing about moments of affective loneliness that do not really take a toll on you. Indeed, you operate a sort of fatalistic association of love with ordeals in general: often, you meet with your soul mate during difficult circumstances or in a climate of sorrow. Is it due to your highly dedicated and loving nature, or to your innate goodness? Whatever the answer may be, you often establish serious links during such occasions. It may occur in a closed setting, a hospital or a convent, or a prison. Mysteriously enough, love is born and develops easily. You are a philanthropist with genuine compassion at the bottom of your soul and you give of your best when the period is filled with sorrows and doubts. You are among those who can commit themselves in all sincerity and fervour to charities. There, your feelings will certainly find a natural outlet, in so far as you are unable to express them strongly enough in your concrete love life. In spite of your misleading appearances, you are rather the shy and reserved kind in the very intimate area of feelings but you are so nice, dedicated and generous that you are not any worse off than others: you successfully turn your ordeals into periods of personal enrichment and beneficial growth, on the spiritual plane as well as for your destiny. Besides, you are blessed with a kind of protection against life hardships. The ravages of loneliness have absolutely no effect on you, to your close relations' deep astonishment.

★★★★★ Venus opposite Saturn, orb -1° 46'

This Venus-Saturn dissonance indicates a demanding, complex and often challenged affectivity. You are wondering about the meanings of love, pleasure and emotions. Your passions take an absolute character right away. No compromise, no sham must stain your sentimental life. In such a context, doubts abound. This aspect prompts you to review the roots of your affectivity, so as to find the assurance you lack and to soothe your dormant sentimental anxiety. Love is an eternal and endless quest. Because you are doubtful of the affection people have for you, you may never feel that you are really loved. Your affective behaviour reveals your uncertainties: tests and challenges follow one another until, eventually, you are certain to experience a love that meets your demands. It is obvious that on the sentimental area, you are not looking for the easy way out.

★★★★★ Sun conjunction Venus, orb 2° 45'

This aspect gives a strong concern about the image you project. You pay a lot of attention to the impression you make and to the charm you exude. You need to know that you can rely on your seduction capacity and earn the liking of your entourage. What people think is important to you and you try to meet your close friends' expectations. You certainly want to please them, but above all, you need their attention. You are seeking pleasure, esteem and affection. But ideals and desires make up a whole: you can be at your best only with those who naturally attract you and for whom you have an esteem that is independent from facts. Your feelings are a response to your quest of the absolute: the persons you find likeable are adopted. Other people are rejected irrevocably! Your character is very affective and it constitutes an asset in many circumstances. Your capacity to seduce, to gain support and to earn esteem is above average. The only danger may be that you abide by the current fashion and trend more than by your own motivations and by what is essential, for the sake of appearances.

★★★★★ Venus trine Pluto, orb 0° 25'

You exercise exceptional clear-sightedness in love. Your passions are subtle, deep, although disconcerting and imperceptible to the outsider. You display no gullibility and you keep your distance. This is part of your charm. You detect what is really at stake in your couple's relationship and in your sentimental attitude. You drive the boat of your sensitivity without falling victim to mirages and affective traps. The only danger is that you may be too calculating. As you try to totally control love and to constantly pull the strings, you may lose the ingenuity and innocence which are necessary to nurture a relationship. You give proofs of your love in a very personal way and you never hesitate to use paradoxes to preserve the authenticity of your relations. You can anticipate problems and prevent difficulties.

★★★★★ Mercury conjunction Venus, orb 4° 39'

This aspect sensitizes you to games of seduction. You like to multiply romantic undertakings, you invent new reasons to seduce or to be seduced. Although your romantic life is not a model of stability, it is full of discoveries, varied emotions, both sensual and cerebral. You know how to earn your entourage's liking through your acute sensitivity. You play around with feelings, with relationships and with love... Mercury and Venus commonly share the capacity to sensitize to human topics. Your receptivity towards others is high. Your broad-mindedness goes hand in hand with your heart's generosity. You pay particular attention to the way people look at you and the effect you make when you meet or exchange with someone. Actually, you expect a lot from others: acknowledgement of your qualities, as well as esteem and consideration. You may also be touchy beyond what you may give to think. In many instances, relationship games may turn out to be more serious than expected.

★★★☆☆ Venus opposite Uranus, orb -5° 07'

Your sentimental life is adventurous: you prefer Bohemia to the comfort of a quiet but shaky love affair. You are a hard-liner and you think that love should be genuine or it should not be at all! You have difficulties in resisting your heart impulses and untimely passions that may challenge your affectivity. You need air, freedom and a relative independence. You also need to fully experience your love impulses, regardless of the price to be paid. The heart has its own reasons that no rules can hamper... The obvious danger may be to cause dramatic hurly-burly. Your inflexibility on the affective plane does not favour a quiet life where « one makes do with very little ». You are the all or nothing type. But does the absolute really belong to our world?

★★★★★ Venus sesqui-quadrate Jupiter, orb -2° 15'

This Venus-Jupiter dissonance indicates a strong will to seduce. However, there may be discrepancies between your words and your actions, as well as between your behaviour and your instinctive reactions. You may be carried away by a maelstrom of emotions, feelings and pleasures and you do not consider the possible consequences of your superficial attitude. Therefore, the apparent state of grace may turn into delusion. Proprieties and necessities of the moment forbid you to experience your desires. What you deem reasonable does not suit your heart's impulses. What a dilemma... Hopefully, as time goes by, you may reconcile your desires, your life patterns and the reasons of your heart with those of your mind.

★★★★★ Venus sextile Neptune, orb 5° 55'

Your sentimental life unfolds like a strange dream. Love is too delicate to be tamed or controlled. You follow your heart impulses in an idyllic ambiance, far from reality's ordinary constraints, far from conventions and conformism. You exude a particular charm, discreet and subtle. But your affectivity may be disconcerting. You are very sensitive to marks of affection and tenderness, although you are aware that love cannot be bought or won. What is meant to be will be and it is impossible to know the hows



and the whys behind a prevailing harmony. The obvious danger is that you may refuse to make any effort in such conditions. Living as a couple must feel natural and you do not need to objectively build the foundations of a relationship. You are an idealist and you dream of an affective paradise, which may be too good to be true...

## The Way You Take Action and Your Sexuality

Your iron will is part of your assets, Jimi Hendrix. It is supported by an ingenuity and a skilfulness that may turn you into a mighty and feared personality. You have the knack of spotting weaknesses in persons you deal with and you can easily hurt them with your innate propensity to drill or to test their force. You are extremely stubborn and you never let go when you are convinced that you are right. Sexually, you are potent and passionate. You are domineering and secretive, with a magnetic personality. It is safer to avoid being taken in a conflict with you because you may be very aggressive and you bear grudges. In some cases, you may also be sadistic. Your personality is as secretive as it is domineering in the areas of action and sexuality.

It is in the area of friendship and collective life (common projects, associations, etc.) that you express your impulsivity, your warmth, and your capacity for action, Jimi Hendrix.

You are cut-and-dried and your motto is "either succeed or die". In case of success, it is your responsibility to make the relationship last because you are not the submissive type and you hardly compromise. You put a lot of passion in your friendly relationships. You are not interested in lukewarm or insipid acquaintances. Things must be moving, even though it may mean that the relationship is cut short.

In any case, you enjoy participating actively within a community and, whenever possible, you take the leadership role, in your own way. As soon as you are more or less under the public eye, you become enterprising. When you are on your own, you do not feel the need to use your energy.

### ★★★★★ Mars semi-square Neptune, orb 0° 51'

You behave like a bohemian person and you are led by an ideal that you may not control. Your passions are undoubtedly sincere. However, you may target wrong objectives. You engage on hopeless struggles and meaningless confrontations. It is important that you watch out for fanaticisms from all sides and that you remain clear-sighted in the face of your exalted feelings. Your sincerity may work wonders when you champion lost causes. The most difficult thing is probably to keep your exacerbated sensitivity under control. Because you are deeply moved by facts, because you are sensitive to injustices and to the world's woes more than the average people, you embark on incessant battles, at the risk of undergoing a few delusions, on occasions.

### ★★★★★ Mars trine Jupiter, orb -7° 2'

Coordinated action wins over almost all obstacles! You mobilize your energy and your fighting spirit advisedly and you take timely action. This is the reason why you are efficient in situations requiring courage, determination, swift responses and diplomacy, altogether. You do not fear confrontations but you never provoke them unnecessarily. You take advantage of your chances and you adjust your behaviour to concrete situations. You empirically handle events with relevance. The only danger is that you may be overzealous to seize any opportunity... even those that are not necessarily good in the long



run. You should take the time to carefully consider the facts and their consequences. The swiftness of your reactions must remain an asset.

## Your Intellect and Your Communication Style

Your thirst for learning is considerable, Jimi Hendrix, and you can spend a lifetime studying languages, geography, philosophy and law, particularly. You are open-minded and you want to abolish all kinds of frontiers. The humanist, who is dormant in you, may turn into a “frequent traveller” reaching out to others in order to understand them and communicate with them. You express your opinions and your beliefs with honesty and clarity and likewise, you receive others' views with enthusiasm. You have numerous centres of interest and you may be perceived to be superficial, heedless and over-optimistic. However, if you manage to control your tendency to scattering, all your encounters, all your discoveries can positively influence your philosophical life approach.

You are intelligent and brilliant as soon as you have identified a goal and you have partners to work with you. You are less inclined to undertake strictly personal projects, Jimi Hendrix. Your mind and your curiosity include friends and collective projects. You believe that your particularly well-developed sociability is an asset for them.

Collective works, customers and public domain appeal to you, and you feel that you can achieve in those fields. Your negotiating skills are paradoxically stronger when you face the anonymity of a group rather than in intimate individual exchanges, may be only because you have no real interest in your own projects, for several reasons.

### ★★★★★ Mercury opposite Uranus, orb -0° 28'

You are the champion for useless intellectual speculations, for crazy and revolutionary ideas. This Mercury-Uranus dissonance is the signature for an eccentric character, more ready to ridicule generally accepted ideas than to build up stable patterns. Your sense of humour reveals a critical and forceful mind. You can stand for an idea in the face of all opposition but you do not hesitate to support the opposite thesis the day after... with the same conviction. The coherence of your points of view is harmed by these spectacular reversals that constitute your speciality. In the relationship area, you may also provoke dramatic turns of events if your ideas are conflicted. The good news is that it seems difficult to convince you to accept points of view running counter to your principles. Intransigence also has its virtues.

### ★★★★★ Sun conjunction Mercury, orb 1° 53'

You know how to play with your image, how to give multiple representations of yourself. A precious asset: you are sensitive to other people's opinion and you adapt yourself to the audience. Of course, there is a "show" side in your manner that may prevent perfect cohesion. But that's the other side of the coin, for an extraordinary capacity to discover. This aspect translates into an acute sense of observation, an intense desire to learn and to bring everything to light. You strive to be informed in many circumstances, to understand the machinery of the world surrounding you, particularly regarding all human topics. And you will change according to that information and the knowledge gained. You have the chameleon's adaptation powers. And its vulnerability, as well.

★★★★★ Mercury sextile Neptune, orb 1° 16'

Your sense of psychology and of human intimate mechanisms is acutely developed. Your relations are nuanced, clever and guided by a good intuition of individuals. Without effort, you pick up what is at stake in relationships and in contacts. Your « sixth sense » inspires you and may take you into strange roads. On the relations' plane, there is an indisputable subtlety. You know what you should not say or, on the contrary, you naturally find the suitable words. Your natural and non-rational attitudes often prove right. The unknown fascinates you... Your curiosity for occultism and mystery is keen. Besides, life is a huge human enigma for you.

★★★★★ Mercury trine Pluto, orb -4° 13'

Gullibility does not belong to the collection of your faults! You have a good grasp of human mechanisms and you easily detect flaws, calculations and hidden motivations. Human relations are subtle, never black or white, always complex. You often speak in riddles or in negations and you prefer to use the ambiguous language of symbols rather than the simplistic clarity of words. In this way, you fuel your mystery. On the relationship plane, your strength lies in the delicate art of highlighting flaws, detecting what destabilizes the enemy or, on the contrary, identifying what is relevant to your friends. You are more interested in what is concealed than in what is openly said. More often than not, you exercise an indisputable clear-sightedness.

★★★☆☆ Mercury opposite Saturn, orb -6° 25'

This Mercury-Saturn dissonance does not allow for simple and spontaneous relations. Your vision of the world is complex. You are sensitive to the fragileness of human relations and you are doubtful of transparent situations. You need to look for hypothetical calculations and you suspect that unclear reasons are underlying beneath dialogues and encounters. Your sociability is limited. You are a loner because you dread relationships and you trust very few people among your close friends. You ask yourself more questions than you can find answers! Therefore, you are on the look out, troubled by the unknown. Everything is subjected to your questionings. It seems difficult to find certainties and to be satisfied with commonplaces that cannot soothe your doubting mind. The forte of this aspect is that it brings about undisputable capacities for discernment. Although your lucidity may hinder your relations, it also grants a lasting protection against gullibility. By nature, you belong to the category of the sceptics!

★★★★★ Moon trine Mercury, orb 4° 52'

Curiosity is part of your nature. You perceive everything with sharp acuity. You increase your attempts to establish connections and to exchange opinions and information, particularly when you are in a familiar and intimate context. When this configuration is well integrated, it underlines the multi-faceted nature of the mobility that defines your behaviour and your living conditions and endows you with strong adaptation abilities. You also show a remarkable gift for improvisation and you pick up the quality of the atmosphere so swiftly that you get off any tricky situations. However, you must keep your adaptation capacity under control because when it is overdeveloped, it may become an agent for instability.

★★★★★ Mercury trine Jupiter, orb 8° 05'

You display strong abilities for adaptation, social insertion and various learning capacities. You are credited with an acute sense of relations, probably because you can speak other people's language. You easily assimilate the most varied settings and your qualities are acknowledged. Your attitude and the words you use have the power to seduce and to convince your entourage. Diplomacy is an asset in your game. You are fit for negotiation and you seek compromise solutions. The only danger may be that sometimes, you too readily accept agreements that turn out to be less positive than foreseen, after a

while. This is the other side of the coin for your exceptional flexibility and your unquestionable tact.

## **Your Goals, Motivations, Career, and Destiny**

### **Your Sun is posited in the 11th House**

You definitely are a good soul, Jimi Hendrix: above all, you like to assert yourself by means of friendship, the true one, that is deep and warm; nothing is more rewarding than to be accepted and loved by your friends and by the persons you select.

Collective activities are the source of great satisfactions and it is through contacts and regular acquaintance with your colleagues that you are able to give of your best: your sincere desire to forge strong friendship bonds while implementing your activities, (not necessarily of a professional nature), contributes to positively increase your charisma and even, to make you stand out prominently as a person at the same time benevolent and unselfish.

People are not reluctant to offer their valuable help. They are not fearful because they feel that you are a person who is not looking for any kind of power or domination but who only wants to earn their sympathy without reservation.

Supports and protections from higher-ups are repeatedly granted to you, and not in parsimonious ways. They help you to successfully implement your different projects, preferably within an affectionate and warm entourage; indeed, isolation does not suit you because you would feel that your efforts serve no purpose; your need for recognition and your thirst for warmth are very strong and you cannot spend too much time striving in solitude.

You are idealistic and very sociable. Teamwork, participation in humanitarian and artistic projects or works of public interest, are perfectly suitable.

Rivalries and squabbles may affect friendly relationships that you thought to be so steady and strong: it is obvious that it is impossible to make everyone happy. In such occasions, don't get into a terrible state about it. Your nature is so loving, simple and pleasant that you will quickly find elsewhere more loyal and reliable friends who will make you forget your few disappointments.

### **The ruler of your chart is in the 7th House**

The ruler of the Ascendant, also referred to as the chart ruler as explained in a previous chapter, is also posited in one of the twelve Houses of the chart. Just like the Sun in his House, the ruler of the Ascendant provides certain abilities, or it makes you appreciate more keenly certain areas of life.

The ruler of your chart is in the 7th House, Jimi Hendrix, the House of exchanges with people, of contracts, and of marriage. You may have the talent to smooth ruffled feathers, to behave with diplomacy so as to nurture good relations, to enter into partnerships, and to join any association.

## Aspects influencing your ambitions

Regarding your destiny or your career, the following aspects of your natal chart allow to fine-tune what has just been said above:

### ★★★★☆ Sun opposite Uranus, orb -2° 21'

This Sun-Uranus dissonance indicates a dazzling will to be the centre of attention and to proclaim your specificity, by all means. This aspect belongs to the rebel and the revolutionary restive to all forms of authority and of model. To balance this interpretation, the strong need for autonomy bordering on frenzied individualism must be highlighted. You allow nothing or no one to hinder your chosen line of conduct. Obviously, your attitudes are inflexible. You prefer to continue to the bitter end, even when you are wrong, rather than to be more open to people's ideas. Tyrannical attitudes often turn against the perpetrator... However, this configuration is a powerful agent for creativity, provided your hothead and extremist nature is kept under control.

### ★★★★☆ Jupiter square Midheaven, orb -0° 39'

Jupiter, the planet of law and social achievement, is in mild dissonance with your Midheaven, Jimi Hendrix. You may experience difficulties in climbing up the steps of your social status, or in having your true worth fully recognised. There is definitely nothing serious to worry about. It is up to you to remain self-confident and not to be too impatient. With effort and perseverance, you can reach serenely the goals you have set for yourself. The only mistake you must avoid with this configuration is to jump the gun and to forget hierarchy and laws, or just to underestimate the work you must put in to that end.

### ★★★★☆ Sun opposite Saturn, orb -4° 32'

The Sun-Saturn dissonance indicates frequent questionings. For the sake of lucidity, you are doubtful of everything that makes up your life environment, as well as of your entourage and of yourself. Past events are the cause of your distrust. Your motivations are not based on conventions or established norms. They may produce a feeling of loneliness or of revolt. However, you withstand difficult situations. You are pre-adapted to changes of direction and you are able to question the very basis of your life. Doubts are often overwhelming and hamper your steps. It is important that you accept facts with more simplicity and that you take life as it comes, without constantly questioning the validity of this or that option. It does not imply that you must lose the lucidity that is your characteristic. It only means that you have to build the self-confidence that you are lacking.

### ★★★★☆ Sun trine Pluto, orb -2° 2'

This harmonious Sun-Pluto aspect indicates an exemplary clear-sighted mind. Without destabilizing your appearances or your personality mask, Pluto makes you aware of your subjective and questionable character, as well as of your manner. You never take yourself completely seriously. You have a good grasp of human nature's complex games, without gullibility, without excessive simplification. Because you can perceive hidden elements underlying any situation better than anyone else, you are acknowledged as perspicacious. This aspect allows you to distance yourself from difficult circumstances and to remain impassive when you must overcome pitfalls.

### ★★★★☆ Moon square Midheaven, orb -3° 52'

There is a dissonance between the Moon and your Midheaven, Jimi Hendrix. It may indicate a discrepancy between your sensitivity and the goals you set for yourself in life, although this dissonance seldom plays out dramatically. You may feel that your emotions sometimes catch you off your guard in society, and that the level of your popularity is not too satisfactory, without your knowing the reasons

why. In some cases, females may thwart your social ascent.

★★★★★ Sun sextile Neptune, orb 3° 09'

This harmonious Sun-Neptune aspect indicates a highly developed intuition and clear-sightedness and sometimes, a sixth sense. Mental images or information drawn from the unconsciousness impress your mind. What was only a muddled feeling turns into certainty and deep conviction. You do not necessarily need to justify your attitudes: you take a decision because you feel that you have to do so, although you may not control the underlying logics. The danger is that you may follow fanciful or adventurous roads. Beliefs you cannot explain may prove wrong or over-optimistic. However, your intuition is seldom misleading. One last comment: there is often a keen curiosity for the « bizarre » and the paranormal with this planetary aspect.

★★★★★ Saturn sesqui-quadrate Midheaven, orb -0° 1'

Saturn is in dissonance with your Midheaven, Jimi Hendrix. Of course, nothing really serious is to be feared. It is just that sometimes, you feel that an unfair slowness keeps on delaying the achievements you deem that you deserve right now. You must work twice as hard to climb up the rungs of success, and above all, you must not get disheartened. Effort is one of the values you must work on, and it is a punishment by no means. It is obvious that your goals are achievable, but you must remain on the right track and show perseverance. That's all!

★★★★★ Jupiter semi-square Saturn, orb 0° 29'

Jupiter and Saturn form a dissonance in your natal chart. It is far from being horrendous. This planetary configuration, which is deemed somewhere between the individual and collective characteristics, only indicates that your social integration may be delayed, or may encounter a few difficulties. Such slight delays or setbacks often have their origins in your own behaviour. Indeed, since Jupiter represents laws and public life, and Saturn, seriousness and perseverance, in many instances, you may become impatient, or even rebellious to any form of authority or legal constraints, to the extent that you cross the white line... When you face such circumstances, you must resign yourself to listening to reason and accept to wait for your turn, lest... your achievements are even more slowed down by your own haste.

## Your Assets and Your Part of Joviality

This planetary configuration in your chart is very positive, Jimi Hendrix, because Jupiter, the planet of Greater Fortune, is in his exaltation, which means, in a privileged position. Jupiter protects your family area and later, your own home. Your sense of responsibilities is increased, your inclinations for comfort and customs are strengthened; usually, you are well integrated in society. You mature affectively early, and this fact enables you to avoid many setbacks. The only danger with this pleasant configuration may be your attraction to good things, in all areas, and their consequences.

With this planetary position, Jimi Hendrix, your natural benevolence is greatly favoured in your dealings with others. Jupiter in the 7th house is usually considered... to be one of the best possible indications for a successful marriage and a springboard for your social life! Your feelings are generously expressed, and your company is pleasant.

The planet Jupiter symbolizes expansion, broadness and generosity. Jupiter is associated with the functions of synthesis, enthusiasm and optimism. In your natal chart, his house position is more



important than his sign position because, like Saturn, Uranus, Neptune and Pluto, he is a slow planet. Many people born in the same period have Jupiter in the same sign. This is the reason why the sign occupied here is less meaningful than when it is occupied by the so-called fast planets, i.e. the Sun, the Moon, Mercury, Venus and Mars. Therefore, some caution is to be exercised as you read what follows.

Jupiter in Cancer is in the sign of his exaltation, which means that he is at great ease and he can express his essence more powerfully. He amplifies your emotions, your imagination and your optimism. You can be a good head of family or you develop a natural interest for matters linked to your home, your roots, your patrimony or that of your family. All your domestic affairs are protected.

## Your Serious Side

Your liveliness and your superficiality are slowly transformed into secondarity, profundity of reflection, and interest for knowledge, contacts and logic.

The association of the astrological house of effort with the planet symbolising concentration and the necessity to overcome one's fears is not negative in itself. In your daily life and in your work, Jimi Hendrix, more than anyone else, you are dependent on your courage and your persistence.

The danger is that you underestimate yourself psychologically, or that you give up a task just because you think that you cannot live up to people's expectations. Your challenge is to gain self-confidence and wisdom and to pursue your effort because in the long run, they will be rewarded.

The planet Saturn symbolizes contraction, effort, time, limitation and concentration. Saturn eliminates anything that is not authentic, sooner or later. It is impossible to cheat him as he gives an irresistible desire to form a coherent whole with oneself, in responsible and wise ways. He is the great purifier. He represents our limitations but also our truth. In your natal chart, the house position where Saturn is posited is more important than his sign position because, like Jupiter, Uranus, Neptune and Pluto, he is a slow planet. Many people born in the same period have Saturn in the same sign. This is the reason why the sign occupied here is less meaningful than when it is occupied by the so-called fast planets, i.e. the Sun, the Moon, Mercury, Venus and Mars. Therefore, some caution is to be exercised as you read what follows.

Saturn in Gemini decreases your lightness, your frivolousness, and your heedlessness. You become more thoughtful, more concentrate and you learn to deeply funnel your ideals; your practical sense is increased, your concern for punctuality and your thirst for precision are reinforced.

## A Few Special Points

### Your Uniqueness and Your Utopias

Your sentimental life is usually hectic and jerky. You are constantly looking for pleasures and love affairs loaded with feelings and novelties. This also applies to your leisure and to your creativity. You are somewhat insatiable, sometimes unconsciously, and you are prone to reverse your choices. Later on, when you assess the situation, you realize that you seem to avoid stability in these areas.



In your concrete life, you are attracted by eccentric partners who may constitute a danger in terms of durability. In parallel, you are creative, innovative, sometimes at the highest level of your art, but sometimes you may be totally uninspired.

Your children may be an important source of satisfaction or of concern. For instance, birth may occur within non-conventional settings (out of wedlock, or in unforeseen circumstances, or not with the right person etc.).

## **Your Inspiration and Your Illusions**

Your concepts and ideas in politics, philosophy and, generally speaking, higher knowledge and abstract matters, are your sources of inspiration. But at the same time, your mind is a bit confused and unmethodical in these areas.

Remote lands, evasion, literally (long distance trips) or figuratively (higher knowledge) give you a confused feeling of the infinite, of fusion and communion with the world at large; the danger is that you may get lost. You must be cautious when you travel, and you should try to step back in order not to go astray when you deal with big concepts and ideals.

There is a strong tendency towards idealization, with many assets and many dangers at the same time.

## **Your Passion and Your Authority**

In the sexuality area, you are very creative and you fear nothing. You are willing to experience your fantasies to the very end because you need to understand life's most secretive and mysterious aspects.

You are usually interested in occultism and in all topics that go beyond the everyday life framework: death and after-death, parapsychical researches, etc. You have a strong sixth sense and you intuitively understand at once things that are usually hidden and private.

Your material life may be disrupted by inheritances and gains stemming from happy speculations. In the most negative cases, you undergo huge losses that are difficult to understand. In all cases, these upheavals are meant to transform your personality and your approach to life.

## **Your Isolated Planets**

In general, the ten planets of the chart are connected to other planets by major or minor astrological aspects. It is owing to those ties that the planets' energies can manifest in the chart owner's personality and play out within safeguards according to a specific tonality.

It seldom happens that in a natal chart, a planet is totally disconnected from the nine other planets.

Astrologers have observed that when such a case occurs, the person feels the energy of the unsuspected planet in quite a singular way, very jerky and powerful at the same time. Thus, for instance, the famed

astrologer Jean-Baptiste Morin de Villefranche wrote that "an unaspected planet heralds that something strange or extraordinary will take place regarding the meanings of the house in which the said planet is posited" (source : l'astrologie selon Morin).

Rules for detecting an unaspected planet: among all the testimonies that we have reviewed to this day, based on our experience, we tend to agree with American astrologer Janis Huntley who accepts seven aspects, which involve the zodiacal twelve sections of 30 degrees. The aspects to be considered are the conjunction (0 degree, cooperation or tension), the semi-sextile (30 degrees), the sextile and the trine (60 and 120 degrees respectively, aspects of cooperation), the square and the opposition (90 and 180 degrees respectively, tensed aspects), and the quincunx (150 degrees, slightly tensed). In this detection, the chart's angles are not taken into account.

In any case, it is important to remember that an isolated planet clearly expresses its influence when it is a personal planet. Thus, when the Sun, the Moon, Mercury, Venus, or Mars is isolated, it is certain that the effects described by Jean-Baptiste Morin de Villefranche will become manifest. As for Jupiter, Saturn, Uranus, Neptune, and Pluto, one must be cautious because the volume of cases documented is not yet large enough.

Your chart has no isolated planet, and this particular case does not apply to you.

## Annex 1: Your Minor Dominants

The five following dominants are less significant than those described at the beginning of your report. They may not be strongly felt. In some cases, they add several minor details to the analysis of your character, but they are rather for curiosity purposes. It is not necessary to take them into account when you first read your portrait.

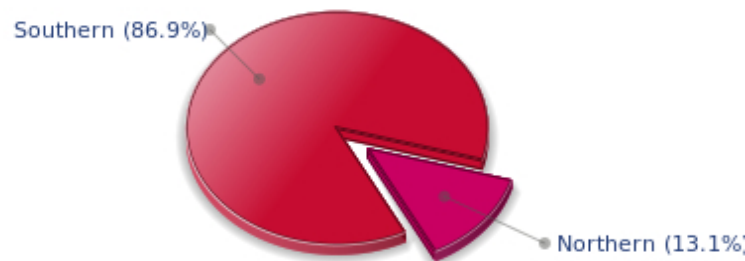
### Your Planetary Repartitions: Northern, Southern, Eastern and Western Hemispheres

The axis linking the 1st house's cuspid (the Ascendant) to the 7th house's cuspid - the Descendant - divides the zodiac into two bowls, a superior bowl, in the South, and an inferior bowl in the North. Quoting an expression by the famous American astrologer Rudhyar, the Southern part and the Northern part correspond to two functions: "being" and "doing". Other concepts are also associated with this North and South distribution, such as introversion - Northern hemisphere - and extraversion - Southern hemisphere - being or appearances, inner life or external life, reflection or action, dreaming one's life or living one's dreams, the abstract or the concrete, backstage or limelight.

This is not about determination but about personal inclination: thus, some people will be thrown into public life despite a prominent Northern hemisphere. If this happens, however, it will not be due to their will, their taste or their deep nature. Conversely, a prominent Southern hemisphere will not bring about a famous destiny to its owner, even if he tends to turn the spotlight on himself, or if he looks for a more active life. It is a matter of deep nature and natural inclination. Of course, none of the typologies is "superior" to another.

In your birth chart, Jimi Hendrix, the ten main planets are distributed as follows:

### Your Northern and Southern Hemispheres



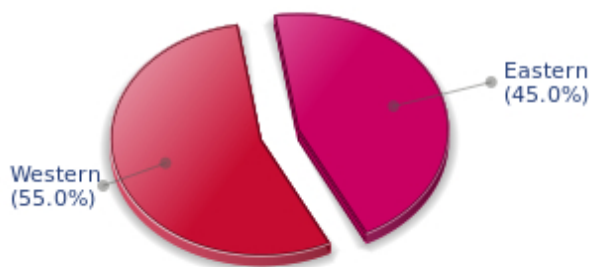
Jimi Hendrix, the predominance of planets in the Southern hemisphere prompts you to take action, to draw attention on yourself, and to make your actions and what you have in mind visible to everyone. Sometimes, without giving a single thought to, and to the detriment of, a richer inner life and a deeper and wiser reflection. Action and communication are inevitable in your opinion, and you tend to think that the only thing that matters is what is seen! This is not always true, and it is up to you to progress through the development of inner qualities such as meditation, solitude and imagination so as to become stronger.

The birth chart is divided into two other parts, Eastern and Western, by the axis linking the Midheaven to the Imum Coeli.

The Eastern part, on the Ascendant side, shows the person's ego, will, magnetism, and vitality, whereas the Western part, on the Descendant side, symbolizes other people, communication, relationships and their influence, as well as flexibility and adaptability.

Jimi Hendrix, here is the planetary repartition in your Eastern and your Western hemispheres:

### Your Eastern and Western Hemisphere:

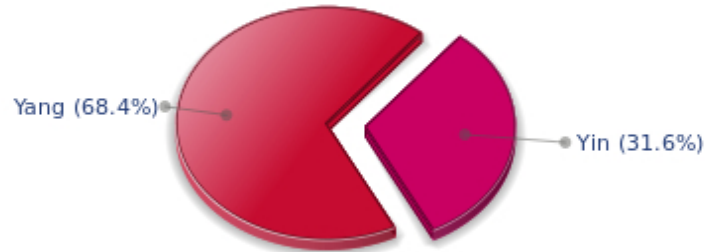


Jimi Hendrix, the East and West sides are well balanced in your chart. This means that you are not too determined or authoritarian, and that you are neither impressionable nor fragile. You are capable of taking decisions, in full awareness, without anyone's help when circumstances so require. However, you have no problem taking your entourage's viewpoints into consideration, with tact and intelligence.

### Your Yin and Yang Polarity

The twelve signs are divided into two polarities, called active or passive, or sometimes masculine and feminine, positive and negative, Yang and Yin. This classification corresponds to two quite distinct tonalities, the first one bringing extraversion, action, self-confidence and dynamism, the second one, introversion, reactivity, reflection and caution. None is superior to the other, each group has its own assets and shortcomings. Odd signs - Aries, Gemini, Leo, Libra, Sagittarius and Aquarius - belong to the first group, whereas even signs - Taurus, Cancer, Virgo, Scorpio, Capricorn and Pisces - belong to the second group.

## Your Yin and Yang Polarity



According to the disposition and qualities of your planets and angles, you are rather influenced by Yang energy, the active polarity, Jimi Hendrix: more concerned about actions than reflection, you sometimes rush without standing back and without the deepness that is needed. However, your spontaneity prompts you to take fresh starts, even after repeated failures caused by your rashness.

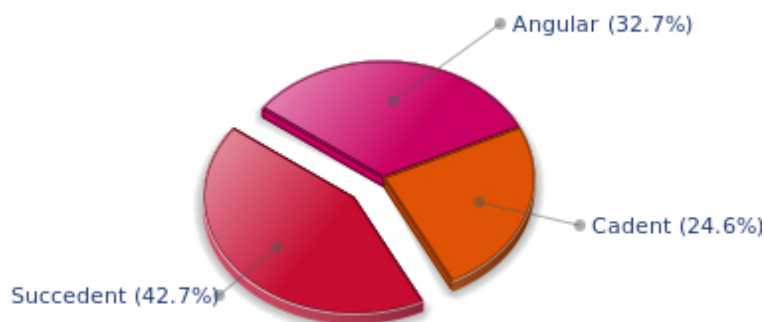
### Your Houses' Accentuations

Houses are split up into three groups: angular, succedent and cadent.

The first ones are the most important ones, the most "noticeable" and energetic houses. They are the 1st, 4th, 7th and 10th houses. Their cuspides correspond to four famous angles: Ascendant for the 1st house, Imum Coeli for the 4th house, Descendant, opposite the Ascendant, for the 7th house and Midheaven for the 10th house, opposite the Imum Coeli.

Planets are evaluated according to a whole set of criteria that includes comprehensive Western astrology rules. At their turn, planets emphasize specific types of houses, signs, repartitions etc., as previously explained.

## Your Houses' Accentuations



The emphasis is on succedent houses in your chart, namely, the 2nd, 5th, 8th and 11th houses, Jimi

Hendrix: this configuration usually endows a personality with affective and sensitive qualities. Obviously, to the detriment of self-confidence or self-assertion, but your heart qualities may be very important. These houses also favour realization. Time and patience are part of their characteristics. However, they are only indications and you must include them in the rest of your chart in order to see whether they are validated or not!

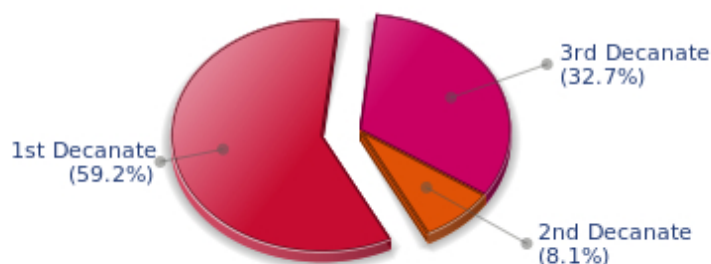
### Your Esoteric Decanates

Each sign contains 30 degrees and can be divided into three equal parts: the decanates. The Tradition indicates that specific meanings can be associated to each of the three decanates. Their sphere of activity is usually limited to the Sun sign, however, it is even more interesting to observe the distribution of all the planets in the chart to get an idea of the respective importance of the three decanates, which can complement the description of the personality.

These meanings must be considered with the greatest caution. Indeed, they are minor characteristics that can only underline other outstanding traits of character.

Traditionally, the first decanate highlights the characteristics of the sign where a planet is located. The two other decanates correspond to sub-dominant planets, depending on the nature of each sign. This system leads to a multiplication of meanings and it is impossible to have a clear understanding: here, we prefer to give only the meaning of one decanate in comparison with the other two, within the birth chart as a whole. Again, the greatest caution is needed with regard to this minor indication as it is not always reliable: it is not essential that you read these texts in the beginning. You can get back to them later on, once you have read more important interpretations

### Your Esoteric Decanates



The first decanate, which means the part between 0° and 10° of any zodiacal sign, prevails in your natal chart, Jimi Hendrix: this decanate is traditionally linked to vitality and physical constitution, and may indicate that you efficiently express your concrete energy on the material and sensual planes.



## Annex 2: Karmic Study

The karmic theme is a good complement to the psychological portrait, or natal chart. This analysis is based on the positions of the Lunar Nodes, the Black Moon and the Part of Fortune: they are also called fictitious points and describe the spiritual purpose of your destiny. Because there is in all of us an experience and a quest, our life is an evolutionary journey... provided that we head towards the right direction, of course! Indian astrologers highly prize the Nodes axis (North Node and South Node). It is the Ariadne's thread that we are invited to follow. The Black Moon indicates the sector where we are most likely to transform or to transcend, whereas the Part of Fortune points out the area where we can easily express our specificity.

### The Lunar Nodes: a spiritual path

Lunar Nodes have their roots in the Indian tradition and they are based on a simple concept: each of us have a mission of their own, here on earth, a destiny, a course. According to the Indian philosophy, life is a school: the nodal axis describes our past experiences (South Node, our karma, our spiritual inheritance or our previous lives), and our aims on earth (North Node, our Dharma, the purpose of our current incarnation). This is the reason why the study of the lunar nodes is called "Karmic astrology". Here, we shall not step into hypothetical past lives. Wherever our current trends may come from, all that really matters is that we become aware of the purpose of our life, its finality and our dharma. We are likely to understand our life purpose around the age of 37, when the Lunar Nodes return to their natal position.

You make friends easily and you earn your entourage's confidence and esteem. Very early, you develop an acute sense of fraternal relations, generously receiving and giving. This spirit of mutual aid may lead to a happy-go-lucky attitude that may border on carelessness... As you rely too heavily on friendship, there may be a danger to undergo a few setbacks: idealism and spontaneous dedication may meet with ungrateful reactions or the indifference of the very persons whom you try to help. Your destiny is probably marked with a quest of individual achievement. It is of utmost importance that you create, that you beget a fruit, a work or a child. Little by little, you become independent, without selfishness, but with the strength of those who know that they can only rely on themselves. Do not hesitate to live your dreams to the end and to engender, over and over again. Creation, whatever its form, is the path to your fulfilment. You slowly discover the pleasure to design as you please, without outside interference. It is important that you find an area for your personal expression and, as the poet says, "before the eyes, constantly, night and day, either a great labour or a great love".

Your life's purpose is related to your disregard for material goods and dispossession. Whether or not you enjoy comfort, a financial or affective capital, someday, you question your assets and you start anew. Of course, you enjoy life's simple joys. The security granted by stable relationships allows you to cope with possible delusions. But life undertakes to remind you that nothing is eternal here below, the wheel keeps on turning and, at any time, one may irrevocably lose what one thought to possess forever. Paradoxically, ordeals and losses make you stronger: as time goes by, you feel freer, more detached from the values of this world and closer to the essential... The spiritual life can't be bothered with the prosperity sought after by ordinary mortals. As you give up the values that you once thought to be indispensable, you gain in terms of lucidity and, eventually, in terms of tranquillity. Your powers and your inner dimension will then impress many people: do not overdo it!

## **Lilith or the Dark Moon**

The Black Moon is the spark of refusal and distance that is dormant in all of us. Depending on the sign where she is found in your chart, she highlights the desire to transform and to sublimate a part of your life. The Black Moon is unfathomable and mysterious. She gives a different dimension to the sector she touches. Her manifestations are subtle; nonetheless, she is powerful, implacable, demanding to the extreme... The Black Moon is also called Lilith. She is the inner flame of your heroism and insubordination.

You pay special attention to your familiar and intimate realm: an importance and a demand, too. You are in search of a setting into which you can totally merge. You do not appreciate half-measures in the family: you want the perfect osmosis or nothing at all! In the long run, this will melt your attitudes into your entourage's may become the cornerstone for a near-to ideal union. However, the danger is that you may shut out solicitations, inevitably disturbing, which are not from your clan.

You decidedly assert yourself as a person made of desires, love and the absolute. If this configuration is not well controlled enough, your thirst for timeless relationships may hamper simple, natural and obvious affairs. You may reject persons whose attitudes do not perfectly live up to your expectations. However, as you keep on looking for your muse, it is very likely that you will find the person to whom fate has relentlessly tied you.

## **The Part of Fortune in House**

The Part of Fortune is a very ancient fictitious point that depends on the lunar phase at the time of birth. The astrological house tenanted is particularly strengthened. In your chart, the Part of Fortune is in the 8th house: you need to constantly transform your life, to evolve and to shed your skin. You do not hesitate to regularly question the basis of your manner. Everything is death and revival and the wheel of life is ruthless: what was still yours yesterday will be a mere souvenir tomorrow... Your wealth is the know-how you demonstrate when you cope with changes imposed by events, while always remaining true to yourself.

## **Retrograde Planets**

The karmic tradition insists on the issues related to the so-called retrograde planets. They are considered to be the inheritance of a past that was not well experienced, a sort of unfinished business. The interpretations of the retrogradation may seem negative or excessive to you. However, you may relate to a scenario that you have often and repeatedly experienced... as if you underwent several setbacks that all have the same cause. Until the day you become aware of it and you can free yourself from it! Through the slow integration of these planetary energies, you will be able to overcome your difficulties and to pay your karmic debt. Actually, each retrograde planet highlights an opportunity for evolution. Nothing can be achieved without the will to grow spiritually and to defeat your own demons.

With Jupiter retrograding on the day of your birth, the lesson is about grasping the opportunities that are offered to all of us but that some people take advantage of, while others don't. Persons who quickly adjust to circumstances are more likely to achieve their ambitions than those who need to be encouraged to take action. During your childhood, you may not have efficiently responded to life's concrete enticements, leaving other "luckier" people to achieve what you were dreaming of. You preferred to enjoy yourself, here and now, rather than to look for new paths of development or exploration. It is possible that you were not optimistic enough. Enterprising minds were alien to you... Later, you find out

that, indeed, you give little importance to the credit of the frenzied expansion praised by the modern world. Your path is not oriented towards personal prestige. With subtlety, you integrate non-material values and you accept well the fact that you missed past opportunities.

The karma associated with Saturn may border on self-censorship: during your childhood, particularly, you were doubtful of your abilities and your talents. You had a propensity to put yourself in a no-win situation and to under-estimate yourself. Obstacles abound: taboos and prohibitions of all kind slow down your evolution. Little by little, you learn to re-evaluate your possibilities and to gain more self-confidence. Your personal rigour then turns out to be constructive: you are not destabilized by life ordeals and you practice a self-discipline that favours steady evolution. Although your path may be steep, it is nonetheless safe.

Uranus was retrograding on the day of your birth: you have the soul of a rebel and your behaviour may often be tyrannical or extremist. Your manner has brought you setbacks. You lack the flexibility that spares you the pain of forcing your ways through events. The danger may be that you get trapped into rigid patterns and into personal logics incompatible with others'. This is precisely what your life's lesson is about: as years go by, your judgments are more qualified and your attitudes become less cut-and-dried, less stubborn. You must lose the essentially individualistic character of your childhood and be more open to other people's ideas and problems. In other words, a path of love. Without losing your remarkable resolution, you must practice some form of renunciation and be sensitive to various logics that constitute the wealth of your social life.

Pluto retrograde suggests power issues and mishandled relations: for you, everything comes down to power struggles, submission and domination, Machiavellian manoeuvres, including within your couple... The results are complex behaviours and an obsession for the power to influence people. Yet, life teaches that you must simplify your relations and adopt more transparent attitudes and healthier desires... As years go by, you will tend towards more simplicity and you will slowly discover that human energy can, and must, be at the service of the good, or of well being, in compliance with our individual progression.

**N.B:** modern astrology attaches less and less importance to the principles of retrograding planets.

## Conclusion

A few remarks are needed here in order to allow you to fully take advantage of your astrological portrait: firstly, do not forget that a birth chart is also a photograph of the sky at birth and a structure that not only contains the personality's characteristics, but also its potential evolution.

We all know that, in real life, people begin to know themselves when they are in their forties, or even later. Likewise, several traits of character in a portrait may seem surprising: in most cases, it means that such features are not yet developed.

Some personalities reveal themselves late in life, whereas others are more precocious. It must be remembered that psychological structures are in a state of continuous evolution because they are influenced by unfolding events and gradual maturity. We can never underline strongly enough the "mobile" nature of the personality, throughout a lifetime.

On the other hand, it is difficult to discriminate what is "already present" at this moment in your life when you are reading your chart's interpretation, from what will appear later in the logic of your evolution: you must sort out all the pieces of information provided and, in most cases, you will see that your astrological portrait is helpful for your endeavours to know yourself better.

Finally, several readings of an astrological portrait are usually necessary in order to absorb all its different meanings and to evaluate the relevance of each character trait.

In any case, better self-knowledge obviously contributes to faster personal blossoming, and it is undoubtedly one of astrology's major roles: contributing to know oneself better, in order to improve more rapidly, to deal with one's weaknesses and to avoid its drawbacks, and to take advantage of one's assets as efficiently as possible.

---