



Jean-Claude Van Damme's Astrological Portrait





Jean-Claude Van Damme's Astrological Portrait



Introduction	2
Your Planets, Houses, Aspects, and Natal Chart	4
Preamble	7
Your Planetary Repartitions	8
Your Dominant Modes and Elements	9
Your Dominants: Planets, Signs and Houses	10
Your Style, Behaviour, and Peculiarities	15
Your Sensitivity	19
Your Affectivity	20
The Way You Take Action and Your Sexuality	22
Your Intellect and Your Communication Style	23
Your Goals, Motivations, Career, and Destiny	24
Your Assets and Your Part of Joviality	26
Your Serious Side	27
A Few Special Points	27
Your Isolated Planets	28
Annex 1: Your Minor Dominants	30
Annex 2: Karmic Study	34
Conclusion	36



Jean-Claude Van Damme's Astrological Portrait

Introduction

To fully benefit from this portrait, we suggest that you read its introduction and its preamble carefully, and then that to take the time to soak up the interpretations of each chapter. Given the large number of texts, which mirrors the human being's complexity, you may need to go through the contents several times, so as to get a good grasp of their meaning and to know yourself better. This will reward your patience.

The purpose of this report is to describe your psychological portrait and to highlight the most fundamental features on the personal area. The report begins with the analysis of your planetary dominants and outlines your personality's general traits before going into further detail. Minor dominants are analysed at the end of Annex 1, for purposes of clarity. Your report then delineates the various facets of your personality:

In general, even when relationships are not involved, we express ourselves and we feel according to our character and our personal motivations: this is indicated by the Ascendant and the Sun sign which both give details on the way we function. They shed a tremendously important light which allows to figure out your personality. Here, we describe your Sun sign (your inner self), your Ascendant (your behaviour as seen by others), and the ruler of the Ascendant (interesting additional pieces of information about the style of your personality). These descriptions alone cover nearly a third or a half of your psychological signature, depending on your natal chart characteristics.

Then, we address your sensitivity, or in other words, the way you receive things and how you express your emotions ; it works as a constant filter for all your exchanges, even when it becomes a more secondary element in your amorous relationship, because at that moment, affectivity prevails. Sensitivity is the way you perceive things, it is your radar, your daily mood, and at the same time, it indicates how you react to your entourage, on a daily basis. It is what others immediately see of you. In the second paragraph, we explain in which areas of life your sensitivity and your emotions are strongest, therefore, where you are most vulnerable.

After this, it is your affectivity, the way you love and how you charm, that comes into play as soon as you fall in love: the first part indicates its basic structure or its main form. The second part describes the areas where it is best expressed and how you display it, according to your personality.

A third fundamental area deals with your mode of action and your sexuality: how you behave, how you manage to obtain what you want, what kind of desires you have. There are twelve possibilities, very

different from one another. The study discloses the specific one that applies to you. In the second paragraph, we explain in which life areas you may most efficiently take advantage of your capacity for action and for conquest.

Your ways of communicating and of thinking are obviously among the major elements that must be integrated into the delineation and the description of your personality. Indeed, they influence your general behaviour and may modify or enhance the image your project (for instance, extraversion may “compensate” a weak affectivity, but a huge number of cases are possible). An additional chapter indicates the favourite areas where you enjoy communicating, thinking and meeting with people.

Besides, we analyze an even more personal aspect that is important to define and understand what may occur within your couple: each of us have a centre of interest, a privileged manner to be fulfilled or to achieve our destiny; this main motivation is indicated by the positions of your Sun and your chart ruler in the astrological houses and we provide you with its detailed description.

A natal chart contains the potential for specific fulfilment and a whole range of assets, protections and qualities. How does the lucky factor manifest in your personality? In which area can you best exploit your qualities? The answers are precisely revealed to you in this chapter.

On the other hand, we all feel in us a part of vulnerability, doubts and fears. How does this part of solemnity or serious side play out? How is it possible to handle it in order to evolve and to get rid of useless elements? All this information is provided to you in these two paragraphs.

Then, you can discover three additional traits of your personality that must be considered as secondary ones. They deal with your predispositions, which means that they need to be triggered by external events because they are not influenced by your will; let's call it a part of fate. Please, bear in mind that your destiny can unfold only in accordance with what you are: therefore, even if they belong to your more unconscious self, these characteristics are parts of you, definitely.

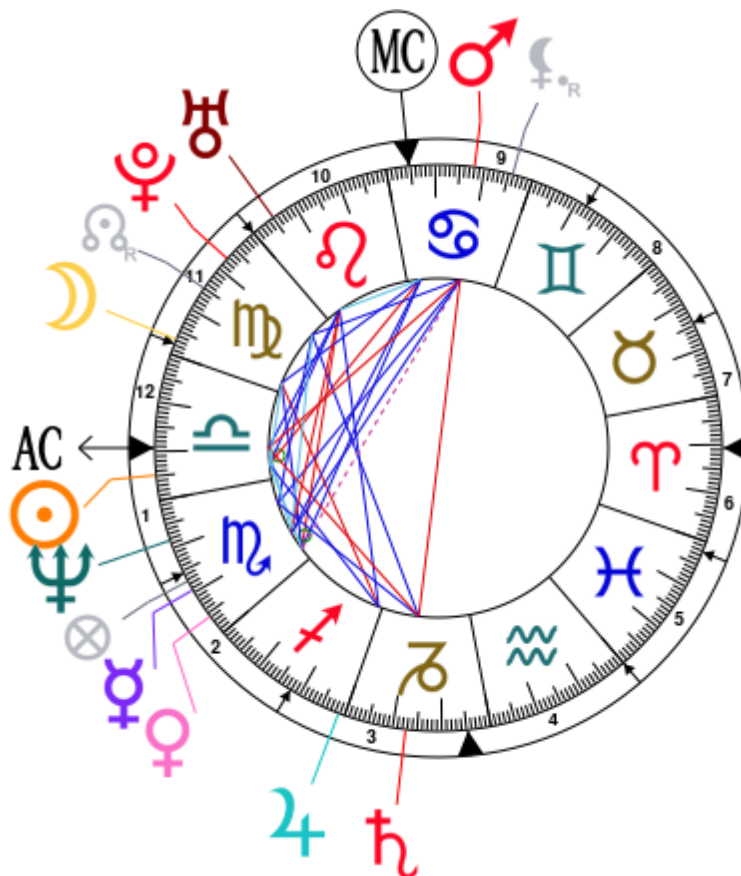
The karmic chart complements the psychological portrait or natal chart. It is based on the positions of the Lunar Nodes, the Black Moon, and the Part of Fortune. These elements of the chart, sometimes referred to as fictitious points, provide information about the spiritual meaning of your destiny. Owing to the fact that we all have in us acquired knowledge and the urge to go on a quest, our life is an evolutionary journey... However, these texts must be read with great caution: this is the reason why you will find this analysis in the Annex 2 of your report.

Your Planets, Houses, Aspects, and Natal Chart

Jean-Claude Van Damme, born October 18, 1960, at 06:45 AM, Berchem Ste Agathe (Brussels), Belgium
 [4.17E ; 50.52N ; 1E00]

Natal Planets				In House	Natal Houses (Placidus)	
☉ Sun	24°51'	♎ Libra	House 1	House 1	19°20'	♎ Libra
☾ Moon	26°52'	♍ Virgo	House 12	House 2	15°30'	♏ Scorpio
☿ Mercury	19°23'	♏ Scorpio	House 2	House 3	17°53'	♐ Sagittarius
♀ Venus	25°45'	♏ Scorpio	House 2	House 4	25°18'	♑ Capricorn
♂ Mars	12°02'	♋ Cancer	House 9	House 5	29°59'	♒ Aquarius
♃ Jupiter	28°42'	♐ Sagittarius	House 3	House 6	27°47'	♓ Pisces
♄ Saturn	12°40'	♑ Capricorn	House 3	House 7	19°20'	♈ Aries
♅ Uranus	24°56'	♌ Leo	House 10	House 8	15°30'	♉ Taurus
♆ Neptune	8°21'	♏ Scorpio	House 1	House 9	17°53'	♊ Gemini
♇ Pluto	7°26'	♍ Virgo	House 11	House 10	25°18'	♋ Cancer
♁ Node	15°02' R	♍ Virgo	House 11	House 11	29°59'	♌ Leo
♇ Lilith	4°09' R	♋ Cancer	House 9	House 12	27°47'	♍ Virgo
AS AS	19°20'	♎ Libra				
MC MC	25°18'	♋ Cancer				

In keeping with the common practice, we consider that a planet posited within 1 degree of the next house belongs to that house. We allow an orb of 2 degrees for the ASC and the MC.



List of Your Active Planetary Aspects

Please find below the list of all the active inter-aspects which are interpreted in this report, in addition to your planets in sign, in house, and all your planetary dominants. Since the aspects between slow-moving planets are of a collective nature, they are not displayed, in compliance with our interpretation rules.

- ★★★★★ Sun semi-sextile Moon, orb -2'
- ★★★★★ Sun semi-sextile Venus, orb 0° 54'
- ★★★★★ Sun sextile Jupiter, orb 3° 51'
- ★★★★★ Sun sextile Uranus, orb -0° 05'
- ★★★★★ Sun conjunction Ascendant, orb 5° 3'
- ★★★★★ Sun square Midheaven, orb -0° 26'
- ★★★★★ Moon sextile Venus, orb -1° 06'
- ★★★★★ Moon square Jupiter, orb 1° 5'
- ★★★★★ Moon sextile Midheaven, orb 1° 34'
- ★★★★★ Mercury conjunction Venus, orb 6° 21'
- ★★★★★ Mercury trine Mars, orb 7° 21'
- ★★★★★ Mercury square Uranus, orb -5° 32'
- ★★★★★ Mercury quintile Pluto, orb -0° 02'
- ★★★★★ Mercury semi-sextile Ascendant, orb 0° 02'
- ★★★★★ Mercury trine Midheaven, orb -5° 54'
- ★★★★★ Venus sesqui-quadrate Mars, orb -1° 17'
- ★★★★★ Venus square Uranus, orb 0° 49'
- ★★★★★ Venus trine Midheaven, orb 0° 27'
- ★★★★★ Mars opposite Saturn, orb -0° 37'
- ★★★★★ Mars trine Neptune, orb -3° 41'
- ★★★★★ Mars sextile Pluto, orb -4° 36'
- ★★★★★ Mars square Ascendant, orb 7° 18'
- ★★★★★ Saturn square Ascendant, orb -6° 4'
- ★★★★★ Uranus sextile Ascendant, orb -5° 35'
- ★★★★★ Uranus semi-sextile Midheaven, orb -0° 21'

Meaning of Stars

Stars indicate the strength of the aspects. Two solid coloured stars (there are half-stars also), mean that the aspect is powerful enough to be noticed at the first reading.

We strongly advise that you read the paragraphs displaying less than two stars later on, after you have absorbed the full import of the other texts.

The yellow colour indicates a soothing and conciliating aspect, and the red colour, a dynamic and tense aspect. The red aspects enable you to evolve, to take action, and to learn to turn your "weaknesses" into assets through your life experiences. The yellow aspects are innate strengths on which you rely in order

to grow better with the former...

Preamble

When interpreting a natal chart, the best method is to start gradually from general features to specific ones. Thus, there is usually a plan to be followed, from the overall analysis of the chart and its structure, to the description of its different character traits.

In the first part, an overall analysis of the chart enables us to figure out the personality's main features and to emphasize several points that are confirmed or not in the detailed analysis: in any case, those general traits are taken into account. Human personality is an infinitely intricate entity and describing it is a complex task. Claiming to rapidly summarize it is illusory, although it does not mean that it is an impossible challenge. It is essential to read a natal chart several times in order to absorb all its different meanings and to grasp all this complexity. But the exercise is worthwhile.

In brief, a natal chart is composed of ten planets: two luminaries, the Sun and the Moon, three fast-moving or individual planets, Mercury, Venus and Mars, two slow-moving planets, Jupiter and Saturn, and three very slow-moving planets, Uranus, Neptune and Pluto. Additional secondary elements are: the Lunar Nodes, the Dark Moon or Lilith, Chiron and other minor objects. They are all posited on the Zodiac wheel consisting of twelve signs, from Aries to Pisces, and divided into twelve astrological houses.

The first step is to evaluate the importance of each planet. This is what we call identifying the dominant planets. This process obeys rules that depend on the astrologer's sensitivity and experience but it also has precise and steady bases: thus, we can take into account the parameters of a planet's activity (the number of active aspects a planet forms, the importance of each aspect according to its nature and its exactness), angularity parameters; (proximity to the four angles, Ascendant, Midheaven, Descendant and Imum Coeli or Nadir, all of them being evaluated numerically, according to the kind of angle and the planet-angle distance) and quality parameters (rulership, exaltation, exile and fall). Finally, other criteria such as the rulership of the Ascendant and the Midheaven etc. are important.

These different criteria allow a planet to be highlighted and lead to useful conclusions when interpreting the chart.

The overall chart analysis begins with the observation of three sorts of planetary distributions in the chart: Eastern or Western hemisphere, Northern or Southern hemisphere, and quadrants (North-eastern, North-western, South-eastern and South-western). These three distributions give a general tone in terms of introversion and extraversion, willpower, sociability, and behavioural predispositions.

Then, there are three additional distributions: elements (called triplicity since there are three groups of signs for each one) - Fire, Air, Earth and Water - corresponding to a character typology, modality (or quadruplicity with four groups of signs for each one) - Cardinal, Fixed and Mutable - and polarity (Yin and Yang).

There are three types of dominants: dominant planets, dominant signs and dominant houses. The novice thinks astrology means only "to be Aries" or sometimes, for example, "to be Aries Ascendant Virgo". It is actually far more complex. Although the Sun and the Ascendant alone may reveal a large part of the character - approximately a third or a half of your psychological signature, a person is neither "just the Sun" (called the sign) nor just "the first house" (the Ascendant). Thus, a particular planet's influence

may be significantly increased; a particular sign or house may contain a group of planets that will bring nuances and sometimes weaken the role of the Ascendant, of the Sun sign etc.

Lastly, there are two other criteria: accentuations (angular, succedent and cadent) which are a classification of astrological houses and types of decanates that are occupied (each sign is divided into three decanates of ten degrees each). They provide some additional informations.

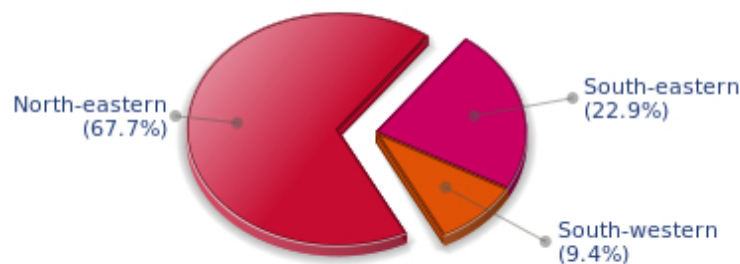
These general character traits must not be taken literally; they are, somehow, preparing for the chart reading. They allow to understand the second part of the analysis, which is more detailed and precise. It focuses on every area of the personality and provides a synthesis of all the above-mentioned parameters according to sound hierarchical rules.

As explained in the introduction of your Psychological Portrait report, minor dominants are analysed at the end of Annex 1, for purposes of clarity.

Your Planetary Repartitions

Each quadrant is a combination of the four hemispheres of your birth chart and relates to a character typology. The Southern hemisphere – the top of your chart, around the Midheaven – is associated with extraversion, action, and public life, whereas the Northern hemisphere prompts to introversion, reflexion, and private life. The Eastern hemisphere – the left part, around the Ascendant – is linked to your ego and your willpower, whereas the Western hemisphere indicates how other people influence you, and how flexible you are when you make a decision.

Your Four Quadrants

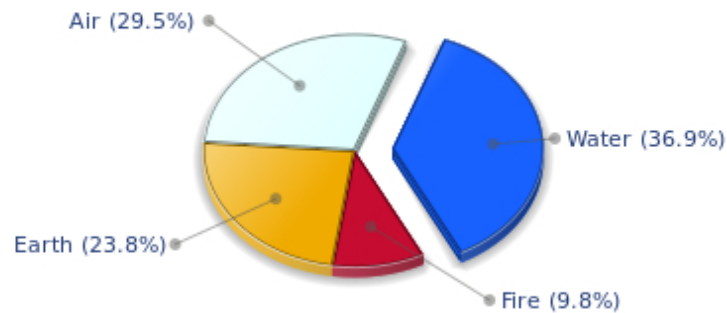


Jean-Claude Van Damme, the nocturnal North-eastern quadrant, consisting of the 1st, 2nd and 3rd houses, prevails in your chart: this sector favours self-assertion and material security to the detriment of your perception of others. You consider self-transformation to be a hazardous adventure. You are inclined to seek stability and you tend to protect yourself with your actions. Possession, acquisition but also communication, without opening up too much, are part of your deep motivations. You are rather autonomous and constant, however it is important that you pay more attention to others, so that you can improve your outcomes.

Your Dominant Modes and Elements

Jean-Claude Van Damme, here are the graphs of your Elements and Modes, based on planets' position and angles in the twelve signs:

Your Four Elements



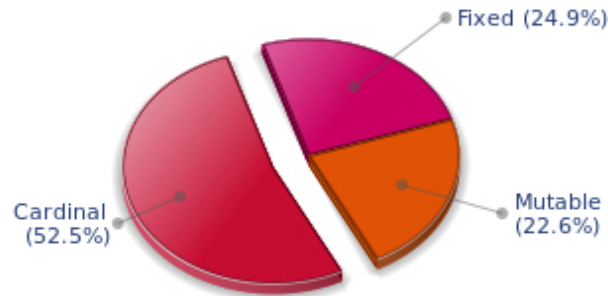
The predominance of Water signs indicates high sensitivity and elevation through feelings, Jean-Claude Van Damme. Your heart and your emotions are your driving forces, and you can't do anything on Earth if you don't feel a strong affective charge (as a matter of fact, the word "feeling" is essential in your psychology). You need to love in order to understand, and to feel in order to take action, which causes a certain vulnerability which you should fight against.

Cheers for communication and mobility, Jean-Claude Van Damme! The predominance of Air signs in your chart favours and amplifies your taste for relations and for all kinds of short trips, whether real (travels) or symbolic (new ideas, mind speculations). You gain in flexibility and adaptability what you lose in self-assertion or in pragmatism.

Fire's qualities are not very present in your chart, with only 9.84% instead of the average 25%, which means that you may lack warmth, enthusiasm, conquering spirit, or energy. You may look indifferent to others, with almost no desire, no joy of life or no enterprising ability. Actually, it is not true, but you should let go, force yourself to be more daring, and show your amazement as well as your vitality. You certainly have as much energy as others, you just need to release it, and it is up to you to display more of it, since it will be all to your benefit: shout, sing, pull faces, dance! That's the right mean for you... In the end, you'll never be accused of being sad, phlegmatic or a killjoy!

The twelve zodiacal signs are split up into three groups or modes, called quadruplicities, a learned word meaning only that these three groups include four signs. The Cardinal, Fixed and Mutable modes are more or less represented in your natal chart, depending on planets' positions and importance, and on angles in the twelve signs.

Your Modes



Jean-Claude Van Damme, the Cardinal mode is dominant here and indicates a predisposition to action, and more exactly, to impulsion and to undertake: you are very keen to implement the plans you have in mind, to get things going and to create them. This is the most important aspect that inspires enthusiasm and adrenalin in you, without which you can grow weary rapidly. You are individualistic (maybe too much?) and assertive. You let others strengthen and improve the constructions which you built with fervour.

Your Dominants: Planets, Signs and Houses

The issue of dominant planets has existed since the mists of time in astrology: how nice it would be if a person could be described with a few words and one or several planets that would represent their character, without having to analyse such elements as rulerships, angularities, houses, etc!

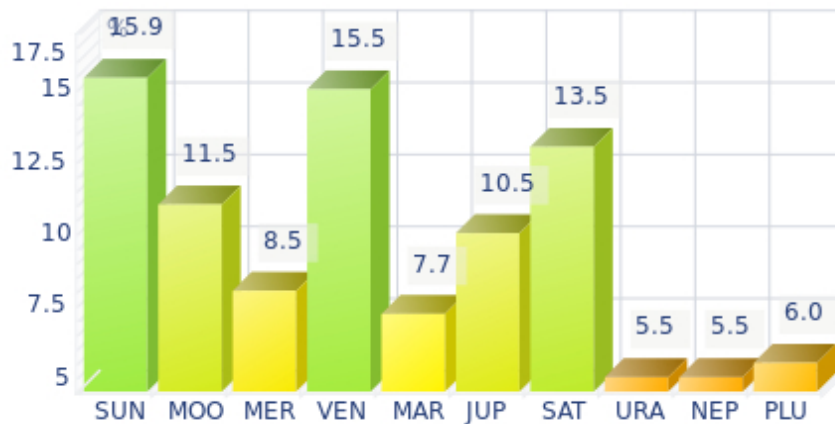
The ten planets - the Sun throughout Pluto - are a bit like ten characters in a role-play, each one has its own personality, its own way of acting, its own strengths and weaknesses. They actually represent a classification into ten distinct personalities, and astrologers have always tried to associate one or several dominant planets to a natal chart as well as dominant signs and houses.

Indeed, it is quite the same situation with signs and houses. If planets symbolize characters, signs represent hues - the mental, emotional and physical structures of an individual. The sign in which a planet is posited is like a character whose features are modified according to the place where he lives. In a chart, there are usually one, two or three highlighted signs that allow to rapidly describe its owner.

Regarding astrological houses, the principle is even simpler: the twelve houses correspond to twelve fields of life, and planets tenanted any given house increase that house's importance and highlight all relevant life departments: it may be marriage, work, friendship etc.

Jean-Claude Van Damme, here is the evaluation diagramme for your planets:

Your Dominant Planets



The three planets that are most highlighted in your chart are the Sun, Venus and Saturn.

One of the dominant planets in your natal chart is the Sun. He symbolizes will, magnetism, sense of honour and dignity. You are a Solar being, and you often display charismatic and leadership qualities. Your warmth and your persuasive power lead you far away from pettiness. You enjoy thinking big and, consequently, you move forward according to what you decide.

Your Solarian weakness may be related to the sin of pride or to excessive authority. The frontier between pride and vanity is tenuous: be careful not to overstep it and to keep the nobleness of heart that is part of your charm.

With Venus among your dominant planets, one of your first reflexes is... to please! Your look, your charm, and your seduction are omnipresent elements in your behaviour.

Your approach to things is connected to your heart, and for you, no real communication can flow if your interlocutors exude no sympathy or warmth. Cold and logical reasoning, clear thoughts and good sense are not important to you: if there is no affective bond with your environment, no connection can be established with the Venusian that you are, and nothing happens.

You have a strong artistic side, and you never neglect subjective but clear concepts such as pleasure, beauty, and also sensuality. However, sometimes to the detriment of efficiency, durability, logic, and... detachment.

Saturn is part of your dominant planets: among the facets of your character, you have a grave and serious side, wise and somewhat severe, since your concentration can be powerful, to the detriment of carelessness and friendliness.

You often look austere, but it is only an appearance, a kind of modesty or reserve; however, it is true that the Saturnian, who is fond of time, effort, asceticism, rigour and sobriety, may have popularity issues. Nevertheless, honesty and straightforwardness, reliability, as well as slow, wise and deep mental process, although not very popular and visible qualities, eventually become noticed and appreciated. Saturnians' second part of life is usually easier and more fulfilling.

Like the Jupiterian, your Saturnian facet prompts you to seek the essential, security, and longevity. However, the difference with the former is that you will never give priority to wealth or "the bigger, the better" philosophy for the sake of power. Saturn, like Jupiter, symbolizes social integration, and it is usually considered positive to have a harmonic Jupiter and Saturn in one's chart because of their social adaptation capacities.

Your vulnerability lies in your too serious and austere side, which may lead to unwanted loneliness and affective frustration. This generally does not last because Saturnians often hide deep down a golden heart that ends up revealing itself...



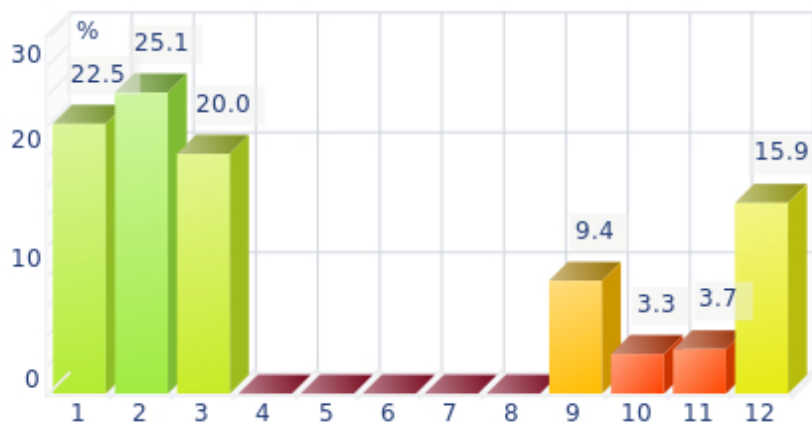
In your natal chart, the three most important signs, delineated according to the above-mentioned criteria, are, in decreasing order of strength, Libra, Scorpio and Virgo. They are often prominent because your Ascendant and your Sun are posited there. However, it is not always the case: it may be because they are occupied by a cluster of planets, by a planet near an angle other than the Midheaven and the Ascendant, or because two or three planets are very active and form numerous aspects from these signs. Therefore, you partly take on the three signs' characteristics, which are somehow superimposed on your natal chart, and all the more so if any of the signs in question is highlighted.

With Libra as a dominant sign in your natal chart, you love to please, to charm, and to be likeable. Moreover, you are naturally inclined towards tolerance and moderation, as well as elegance and tact, as if you were meant to please! Of course, you always find malcontents who criticize your lack of authenticity or of courage and your half-heartedness, but your aim is to be liked, and in this field, you are an unrivalled champion!

With Scorpio as a dominant sign, you are a strong and astute person, complicated and passionate, sometimes destructive and intolerant, but strong-willed, tough and daring, sometimes bordering on aggressive. So many qualities and dangers combined in one person! Obviously, this often results in a natural selection of people around you: those who stand up to you or admire you and those who can't bear you anymore! But that is precisely what you want. You are what you are and you are not going to transform yourself just to please. You are too proud and you never dread confrontations, although your way of fighting is secret, like your nature that, mysteriously enough, you are so reluctant to reveal even to your close friends who will never understand you. That said... what a hellish charm you have!

Virgo, associated with perfectionism, numbers and reason, is among your dominant signs: you inherit its sense of responsibility and tidiness, a clear mind, an unfailing logic, as well as a need to be useful and to fulfil your task to the best of your abilities. Obviously, people may think that you are too modest or reserved, suspicious or pessimistic because of your exceedingly critical mind, but aren't logic and wisdom great qualities? Of course, they are. Moreover, you keep your feet on the ground, you never behave irrationally and you are helpful and hardworking - what more can you ask for?!

Your Dominant Houses



Houses 2, 1 and 3 are the most tenanted ones in your natal chart. To compute their strength, planets and angles are weighed according to various astrological criteria such as swiftness, activity, angularity, rulership etc. From the analysis of the most tenanted Houses, the Astrologer deduces the fields of activity that are most relevant to you, be it because of what you are experiencing, or what you may experience in the future, or because of your deep inner motivations.

The 2nd house is among your three most tenanted houses: life's material aspects - with everything that is implied in terms of security, appetite for life, desire for possession - are deep-seated and you can never be content with living on love and fresh air. On a more abstract level, you may have similar feelings regarding relationships: possessiveness and jealousy in the worst cases, but also faithfulness and durability.

With a dominant 1st house, your magnetism is powerful, and your individuality as well as your willpower are out of the ordinary. You are a determined, strong-willed, and assertive person, with this relative criterion at least.

It is likely that you never go unnoticed when you are in a crowd or a in reunion: an important 1st house suggests that you are a charismatic person with above average vital energy, especially if the Sun is present in this sector.

Your personal interests are always important and you never forget them, which doesn't mean that you are self-centered, but only that you behave according to what is in harmony with your deep nature!

As the 3rd house is one of the most important houses in your chart, communication plays a major role in your life or in your deep motivations: frequent short trips, open-mindedness - which may offset a lack of mutable signs for instance - listening, discussion, interest in learning, knowledge accumulation or

long-term studies, etc., are all areas that greatly appeal to you and are part of your daily life.

Your Style, Behaviour, and Peculiarities

What is commonly known as "sign" indicates the position of the Sun in the Zodiac. The Sun highlights all the characteristics of the sign he tenants. According to astrology traditional rules, these characteristics are all the more pure and exact when the Sun is strong in the sign, or when the sign is particularly highlighted within the chart. Here, we indicate the pure characteristics of the sign but you must bear in mind that they may only shed a light on a particular aspect of your personality. Indeed, the sole sign of the Sun, or of the Ascendant, can never describe an astrological chart because it depends on the degree of strength of the said sign in your chart.

Another important point must be underlined. Contrary to the Ascendant, which clearly describes your appearance, your vitality, your physical constitution, your spontaneous behaviour and the image you project, your Sun sign describes your inner self, which you may not completely be aware of, and which may emerge gradually as you mature: it is about your inner personality that you reveal only to the members of your entourage whom you trust. The Sun sign is likely to be the final form of your personality, once it has evolved in line with the energies of the other parts of your chart, the beginning of which is seen in the Ascendant, your external "bark".

The Ascendant is one of the major components of your natal chart. It is the zodiacal sign that rises in the East at the very moment of your birth. To calculate it, it is therefore necessary to know your exact time of birth.

It provides with a wealth of information on your personality. It is one of the key features that allows the analysis of several parts of you, such as your appearance, your character as it is initially perceived and your immediate behaviour. It describes the external aspect of your personality which you always display, but it also describes your physical constitution in the long-term, in other words, your health.

Please be aware that, in spite of the importance of the Ascendant, the accuracy of its description depends on how strongly highlighted it is in your natal chart. We use the entire set of astrological rules to assess the strength of the Ascendant. In most cases, the Ascendant is as revealing as your "sign", i.e., the sign where the Sun is posited at the time of birth.

You were born under the sign of Libra and your Ascendant is in Libra

Before broaching the details of the meaning of your Sun and your Ascendant, as a preamble, we offer a brief generic interpretation of their combination in your chart:

You are twice a Libra and as such, your inner self and your outward appearance merge together. You are a person of great integrity, if this expression can be used to refer to Libra. Libra is entirely made of nuances, and it analyses everything with an impartial eye, putting aside its own judgments, which proves problematic whenever final decisions must be taken. The essence of Libra is to veer from one side to another, endlessly, because it sees the advantages offered by both sides. Nevertheless, it is certain that no one can accuse you of being a simplistic person pursuing unsophisticated aims! You behave smartly in society. Your charm and your tact may lead your interlocutor to believe that you want to seduce him/her, whereas you are only trying to be nice. As if you were dancing the tango, each partner must move towards one another, be his/her mirror, and act in reciprocal and harmonious ways. You are

immersed in a world in which a peaceful and balanced climate must reign, even though it means that, at times, you have to take drastic and aggressive readjusting measures. It is quite paradoxical, isn't it?

The sign and the Ascendant in Libra

Psychologically speaking, your nature is sanguine and communicative or nervous and introverted, depending on who prevails, either Venus, the principle of harmony, extraversion, desire to seduce, easy and airy communication, or Saturn, the principle of rigour, introversion, self-control, concentration and meditation. Unless Saturn is very strong in the rest of the chart, Libra is very delicate and charming. She easily adjusts in society, particularly with her perpetual search of compromise. It is the reason why you may seem to be hesitant and weak. You do not dare to insist or to assert your views: you prefer to intervene as an agent for harmony, of rally and equity, even to the detriment of your self-assertion. You loathe violence and you strive with all your heart to pacify, to smooth things over, and to adjust to the situation with flexibility and grace.

Since you are born under this sign, you are sentimental, charming, courteous, delicate, refined, loyal, pacifist, fair, distinguished, light, romantic, cultured, airy, likeable, spruce, perfectionist, caring, gentle, quiet, tidy, social, artist, with strong aesthetic tastes, tolerant, lenient, sociable, seductive, elegant, kind, respectful, balanced, but you may also be hesitant, weak, wavering, selfish, fragile, indecisive, timid, indolent, cold or even insensitive.

In love, Sir, you cannot help but try to seduce wherever you go, and you succeed fairly well. You are a real heartbreaker and your natural gift borders on impertinence and injustice, from the outsider's point of view!

You are so likeable, easy to deal with, caring, smiling, diplomatic, you establish connections with such great ease, that you attract a majority of women, including those you are not interested in. It is not a game, it is your nature. Each and everyone believe to be the object and the target of your favours whereas, in fact, it is the way you behave with everybody.

You cannot stand solitude at all: you prefer to be ill-accompanied rather than to be alone. There is a danger that you remain attached to a person who does not suit you best. You are spoiled for choice. You should be able to find a suitable match and to reach the state of harmony that is the centre of your deep motivations.

You are a perfectionist, like Leos who are so demanding regarding the quality of their partners. Real life is seldom as beautiful as your ideal and you may be deceived and badly wounded if your couple should break down. But you will pursue the quest of your soul mate with all the natural qualities that are almost entirely dedicated to this search.

The ruler of your chart is in Scorpio

The ruler of the Ascendant, also referred to as the chart ruler, brings a few interesting nuances to the meanings provided by the Sun and the Ascendant. The sign in which the ruler of the Ascendant is posited fine-tunes the style of personality described by the Sun and the Ascendant. It may strengthen it if the sign is identical to either of them.

The ruler of the Ascendant, Jean-Claude Van Damme, is Venus. It is posited in the sign of Scorpio and makes you appreciate mysteries and the unknown. You need to understand, to solve riddles, and to take action behind the scenes, perhaps so as to be even more efficient. Your criticising skill is a weapon, but it may also backfire on you, just like your sometimes excessive obstinacy.

Aspects to your Ascendant

Several planets form an aspect with your Ascendant, Jean-Claude Van Damme. Therefore, in their specific way, they modify your behaviour and your personality, which do not take on the pure characteristics of your Libra Ascendant only, but which are a blend of its characteristics with those of the said aspects.

★★★★★ Sun conjunction Ascendant, orb 5° 3'

The conjunction of the Sun with the Ascendant represents the perfect fusion of will and vitality, and will and external appearance, Jean-Claude Van Damme. This conjunction indicates an above average charisma or magnetism. Moreover, there is a concentration of energy which enables you to naturally shine and attract, as well as to move mountains provided... you decide to do so!

★★★★★ Mercury semi-sextile Ascendant, orb 0° 02'

You are endowed with quite good adaptation capacities, Jean-Claude Van Damme. Thanks to Mercury, your behaviour matches your intellectual concepts, or your style of communication, which is quite an effortless one.

★☆☆☆☆ Saturn square Ascendant, orb -6° 4'

This hard aspect between Saturn and your Ascendant may bring about a lack of self-confidence and some inhibitions in your behaviour, in people's eyes, Jean-Claude Van Damme. Therefore, you must have trust in yourself and you must not be taken away into the spiral of doubts with its usual consequences, which are to hide away, or on the contrary and as a compensation, to overdo. Please, keep in mind that all this is highly subjective, and that in most cases, if you fully understand it, you can gradually overcome this slight restraint, and even turn it into strength. This is how you can keep your self-esteem and transform your prudence into... an asset.

★★★★★ Uranus sextile Ascendant, orb -5° 35'

Uranus is in soft aspect with your Ascendant, Jean-Claude Van Damme. Although your behaviour is original, nonconformist, and free, it is not unpleasant. On the contrary, this facet of your personality is sometimes considered by other people as endearing and unpredictable, in the good sense of the word. One never gets bored in your company because you are often found where you are not expected, whether regarding your ideas, your lifestyle or the way you react. You possess the charm independent and free persons are endowed with!

★★★★★ Mars square Ascendant, orb 7° 18'

When Mars is in dissonance with the Ascendant, Jean-Claude Van Damme, in some particular circumstances, it may translate into hastiness, and even hostility on your part, which your entourage may not understand. You have audacity galore, but it is up to you to show alertness, so that you don't come across as a short-tempered person unable of self-control.

Your Sensitivity

Your sensitivity is dominated by your reason, Jean-Claude Van Damme, and you tend to analyze your emotional reactions in the slightest details, as if you wanted you hold them at bay so that they cannot overwhelm you or weaken you. Your nature is anxious, shy, you do not like to be in the forefront and you lack self-confidence. You are extremely perfectionist, you need to examine, to organize and to plan everything according to your logic. You like to help and to feel that you are useful, in your own work or through your wise and clever advice. You may also be very demanding and critical, even unbearable, because you are insistent and you find fault in everything. Learn to gain some self-confidence and do not constantly be ready to criticize...

Jean-Claude Van Damme, you find it hard to show what you feel, or you simply consider that it belongs to you and must not be exposed. Anyway, even if your emotions are rich and deep, you keep them inside and you don't wear your heart on your sleeve. Very few persons are able to guess your mood of the moment.

Obviously, you still can be popular, and in that case, it is probably related to a humanitarian context or it involves your dedication. Indeed, the personal side is blurred and this fact allows you to express your feelings without having to open up too much.

★★★★★ Moon square Jupiter, orb 1° 5'

When this aspect is not well integrated, there is a tendency to conceal your true nature and to cheat on your true self. Appearance, emphasis and games hide the essence of your aspirations and may trouble your intimate life. Despite your apparent joviality, it is often difficult for you to live in conformity with your inner demands. Actually, it is difficult for you to reconcile your social life with your private life. The former excludes the latter. To properly integrate this aspect, you must learn to harmonize your external attitudes (social and professional ones) with your daily rhythms. It implies that, when you are in a trustworthy situation such as your family or your home, you accept to behave differently from when you are in a larger context, exposed to social stress. You must neither ignore them, nor should you favour them.

★★★★★ Moon sextile Venus, orb -1° 06'

The harmonious Moon-Venus aspect is an element of intimate balance that favours sensual and affective fulfilment. The search of well being includes all kinds of emotions and feelings. You love, you enjoy life in simple ways and you arouse your entourage's affection. The persons belonging to your inner circle are also objects of desire and pleasure. Tenderness and love are probably one and only thing: you are moved by the gestures of affection provided to you and by the daily acts which strengthen two persons' mutual attachment. Whereas other people dread routine, in your case on the contrary, it increases your amorous feelings. You loathe all kinds of violence, particularly in your intimate life. The danger of this planetary configuration may be your constant changes of mood: whims are often on the agenda... and your will is quite weak. One last point: this aspect is frequently found in the charts of people with an aesthetic or artistic sensitivity.

★★★★★ Sun semi-sextile Moon, orb -2'

This aspect is a strong homogeneity factor: the image you project is in conformity with your real nature and does not upset your basic balance. This is probably the cause of your feeling at ease, your consistent behaviour and your determination to remain your true self, regardless of external pressures and whatever is expected from you. At best, your will and your sensitivity are in harmony, your unconscious abilities

are mobilized and controlled by your conscious will, with no imbalance. However, it is important to avoid the traps of self-satisfaction that would be harmful to your real exchanges and would lock you up in comfortable and rigid schemes. It is possible to remain natural and yet, not be content with the sole well being of those who never cheat themselves.

Your Affectivity

In your chart, the Sun is in Libra and Venus, in Scorpio. Your solar and Venusian signs indicate very complex affective behaviours... The Sun in Libra is marked by a strong association principle, whereas Venus in Scorpio prompts to resistance, even to refusal. You may alternately display these two antinomical attitudes: you expect moral and affective support from your relationship and you dream of fusion and harmony. You think that you are able to share everything, including your values and your models. However, your desires are very specific and your inclinations are distinctive. Besides, you may not appreciate an amorous situation exempt of antagonism. Indeed, you know that love also lives on those differences, which allow mutual enrichment, and you do not let your passion be dulled by the blissful harmony you dream of! In the long run, your attitudes are more selective and your manner becomes more clear-cut. The danger is that you may too quickly adhere to your partner's school of thought because you do not want to hurt her but, as a consequence, you arouse feelings of flatness and tensions. Therefore, it is important that, against all the odds, you fully respect your ideal of fusion and your desire for an intense relationship. When this configuration is well integrated, it allows you to balance two incompatible tendencies, as well as to adhere to your partner's views without renouncing your own, and to calm things down without smothering the excitement of the hearts.

You cannot dissociate love from passion, Jean-Claude Van Damme. Your feelings are immediate, imperious, intense, and it is absolutely impossible for you to think of an amorous relationship without fusion, without the irresistible desire to know everything about your partner: emotions, feelings, sexuality, everything must be experienced in a possessive, absolute and unrestricted way. Actually, your feelings are as complex as they are deep. You seldom love, but when you do, a burning ardour and its torrid, violent frolics consume your couple. It is obvious that such powerful feelings may lead to jealousy and absolute exclusivity, almost bordering on the will to control your partner. If your relationship is genuine, all is fine. But if it is not the case, there are real dangers of shared wounds within your couple; it is hard to reconcile passion with tranquillity and it is clear that for you, sentimental serenity involves a partner who is either as complex as you and who instinctively understands you, or who is complementary, and as calm and steady as your impulses are intense and deep.

Jean-Claude Van Damme, you usually make connections between the possessive aspect of things and your feelings, which are expressed slowly but will grow deeper and steadier as soon as you become attached. Therefore, you need to trust the person you set your heart on and to feel that, somehow, she belongs to you. As a matter of rule, feelings and material well being go hand in hand, and the material conditions in which you experience your love affair are important to you: you cannot live on love and fresh air, a cosy and opulent-looking nest or a quite fancy environment are almost indispensable conditions for you to freely express your feelings. This doesn't mean you are self-interested, you actually have great qualities, such as generosity and compassion. However, you have difficulties in separating the pleasant and material aspect of things from the well being of your couple. Your needs for emotional security are important and you will see to it that you get it at any cost, should you need it.

★★★★★ Venus square Uranus, orb 0° 49'

Your sentimental life is adventurous: you prefer Bohemia to the comfort of a quiet but shaky love affair. You are a hard-liner and you think that love should be genuine or it should not be at all! You have difficulties in resisting your heart impulses and untimely passions that may challenge your affectivity. You need air, freedom and a relative independence. You also need to fully experience your love impulses, regardless of the price to be paid. The heart has its own reasons that no rules can hamper... The obvious danger may be to cause dramatic hurly-burly. Your inflexibility on the affective plane does not favour a quiet life where « one makes do with very little ». You are the all or nothing type. But does the absolute really belong to our world?

★★★★★ Mercury conjunction Venus, orb 6° 21'

This aspect sensitizes you to games of seduction. You like to multiply romantic undertakings, you invent new reasons to seduce or to be seduced. Although your romantic life is not a model of stability, it is full of discoveries, varied emotions, both sensual and cerebral. You know how to earn your entourage's liking through your acute sensitivity. You play around with feelings, with relationships and with love... Mercury and Venus commonly share the capacity to sensitize to human topics. Your receptivity towards others is high. Your broad-mindedness goes hand in hand with your heart's generosity. You pay particular attention to the way people look at you and the effect you make when you meet or exchange with someone. Actually, you expect a lot from others: acknowledgement of your qualities, as well as esteem and consideration. You may also be touchy beyond what you may give to think. In many instances, relationship games may turn out to be more serious than expected.

★★★★★ Venus sesqui-quadrate Mars, orb -1° 17'

This Venus-Mars aspect indicates a sensitivity all on edge and an impulsive character. Emotions and heart impulses cause a marked tension. Life is an affective battlefield. Love is omnipresent but often fragile: impulsiveness reigns over the realm of feelings. The object of desire may become irresistible and implacable, or the sense of confrontations prevents affective tranquillity. However, the richness of your emotional responses is to be noted: you are more inclined than others to be guided by amorous fevers and you live intense passionate experiences. Your overwhelming impressionability must be contained. Romantic people seldom enjoy tranquillity!

★★★★★ Sun semi-sextile Venus, orb 0° 54'

This aspect gives a strong concern about the image you project. You pay a lot of attention to the impression you make and to the charm you exude. You need to know that you can rely on your seduction capacity and earn the liking of your entourage. What people think is important to you and you try to meet your close friends' expectations. You certainly want to please them, but above all, you need their attention. You are seeking pleasure, esteem and affection. But ideals and desires make up a whole: you can be at your best only with those who naturally attract you and for whom you have an esteem that is independent from facts. Your feelings are a response to your quest of the absolute: the persons you find likeable are adopted. Other people are rejected irrevocably! Your character is very affective and it constitutes an asset in many circumstances. Your capacity to seduce, to gain support and to earn esteem is above average. The only danger may be that you abide by the current fashion and trend more than by your own motivations and by what is essential, for the sake of appearances.

The Way You Take Action and Your Sexuality

It is difficult to find a more sensitive person than you, Jean-Claude Van Damme. You are able to contain your aggressiveness and it may be hard for you to exteriorize your feelings. You are usually passive and you draw your strength from inertia and resistance more than from the will to take action. Your mood is changing, you show little of yourself and you may surprise with your inopportune reactions that come late, when people have forgotten what it was all about. The only area where you express yourself with zeal and where your actions are successful is the area of home or, more symbolically, in the fields where you can achieve security. In other words, you need to feel comfortable before you can move, in concrete matters as well as in sexuality.

You may focus all your energy into your ideal, Jean-Claude Van Damme, be it political, religious, ethical, moral or, under its highest form, spiritual. Several areas may be involved simultaneously.

Taking action with all your heart may reveal a dialectics, and you will not rest until you are understood and you have earned other people's adherence. You exchange with keen pleasure. You embrace the causes enumerated above, at the exception of spirituality, as it could never be a subject for proselytism.

You are able to instinctively identify the most important element in life from a remote distance and, inevitably, it does not belong to the material plane. You are not too interested in working for the concrete realm. You aim at longer-term objectives... and even further. Your energy is deliberately, fierily and boldly poured into the realms of the thought and the soul. You chose them all, some of them may be more futile than others, but they are all oriented towards abstraction, concepts, some of them being often more essential.

Your nature may also be more fact-oriented. In that case, you feel that the enrichment of your soul is particularly favoured when you deal with persons and environments that are alien to you: you express your capacity of action through frequent and long-distance travels so as to progress in your personal quest for knowledge.

★★★★★ Mars opposite Saturn, orb -0° 37'

Why should you take action? And how? The surrounding world is not to be trusted. Past events have taught you to question simple situations and to intervene after thorough consideration. You are vulnerable to the traps of life, to confrontations and struggles. You may complicate your behaviour at will, often missing your target due to your self-censoring. Your interventions may lack spontaneity. You must overcome your doubts and acquire the certainty that you are able to handle realities and facts. If you make that effort, you can understand that there are many ways to make life simpler for yourself.

★★★★☆ Mars trine Neptune, orb -3° 41'

This harmonious Mars-Neptune aspect is a signature for the missionary or the inspired activist. You are guided by an irresistible and implacable ideal. Exaltation may border on sacrifice for the sake of the noble or rebellious causes that inspire your struggles and your actions. Far from intellectual speculations, you need to live through your passions, to take action and to let yourself be carried away by a mission, an ideal or sometimes, an illusion. Indeed, you may be a Don Quixote fighting windmills, dedicating all your energy to an indefensible or a fanciful cause. More often than not, your commitments are courageous, even heroic. And the faith you display turns perilous enterprises into feasible projects. You can successfully implement actions that are considered doomed to failure by others.

★★★★★ Mars sextile Pluto, orb -4° 36'

You have a very personal way of taking action and of experiencing confrontations and struggles. The laws of the world are subtle, often with complex and hidden mechanisms. For these reasons, you prefer to act behind the scenes rather than openly. You manage your daily life in a distant and subtle fashion while you try to understand the logic underlying observed facts. You may also provoke events although you act as if you were not concerned. Your interventions will be as efficient as they are discreet. You may secretly transform your life and you live through the inexpressible motivations that connect you with the invisible realm. Things, which cannot be formulated, must be experimented and felt. You test experiences that your entourage find uninteresting and meaningless.

Your Intellect and Your Communication Style

You are the very type of the researcher endowed with great intellectual and imaginative capacities, Jean-Claude Van Damme, and your curiosity is very deep. Researches, riddles and mysteries appeal to you and with a remarkable sixth sense and intuition, you endlessly try to unearth the truth, in all areas, like a psychoanalyst or a detective. You are a very secretive and introverted person, you find it difficult to open up and you rather prefer psychoanalysis. In spite of your clear-sightedness, you find it hard to deal with people: your critical mind, tinted with irony and causticity, may be destructive, especially since your determination and your stubbornness do not incline you to giving up. You are fond of provocations and you handle contradictions skilfully even though you may come across as dishonest.

You have your feet on the ground and a particularly well-developed practical good sense, Jean-Claude Van Damme. With you, no excessive emotions or fuzzy, abstract thoughts: you know where you are heading to, and your sharp and clear intellect usually enables you to efficiently manage your personal affairs.

You may be stubborn and concerned about your earnings and your success, particularly in the financial area, where your intellectual abilities are remarkably exploited. You manage to get out of a tight spot thanks to your logical mind and clear vision.

★★★★★ Mercury quintile Pluto, orb -0° 02'

Gullibility does not belong to the collection of your faults! You have a good grasp of human mechanisms and you easily detect flaws, calculations and hidden motivations. Human relations are subtle, never black or white, always complex. You often speak in riddles or in negations and you prefer to use the ambiguous language of symbols rather than the simplistic clarity of words. In this way, you fuel your mystery. On the relationship plane, your strength lies in the delicate art of highlighting flaws, detecting what destabilizes the enemy or, on the contrary, identifying what is relevant to your friends. You are more interested in what is concealed than in what is openly said. More often than not, you exercise an indisputable clear-sightedness.

★★★☆☆ Mercury square Uranus, orb -5° 32'

You are the champion for useless intellectual speculations, for crazy and revolutionary ideas. This Mercury-Uranus dissonance is the signature for an eccentric character, more ready to ridicule generally accepted ideas than to build up stable patterns. Your sense of humour reveals a critical and forceful mind. You can stand for an idea in the face of all opposition but you do not hesitate to support the opposite thesis the day after... with the same conviction. The coherence of your points of view is harmed

by these spectacular reversals that constitute your speciality. In the relationship area, you may also provoke dramatic turns of events if your ideas are conflicted. The good news is that it seems difficult to convince you to accept points of view running counter to your principles. Intransigence also has its virtues.

★★★★★ Mercury trine Mars, orb 7° 21'

The harmonic Mercury-Mars aspect is the signature of a quick wit and an energetic character. You take decisions rapidly and you implement them straight away. You never accept stiff situations. You need to design, to take action, to fight to express your acute sense of relation: the world, the people, everything is of concern to you... You need to be involved in relationships and in dialogues. Your sharp retorts earn you a reputation of straightforwardness. On the relations' area, your quick wit and your mobility are greatly appreciated. You find the allies and partners you need at the right time. An art of resourcefulness that is precious...

Your Goals, Motivations, Career, and Destiny

Your Sun is posited in the 1st House

Willpower and appearance united! You are so lucky, Jean-Claude Van Damme, that your inner self and your behaviour merge to increase your energy and your vitality. Since the Sun represents your self-assertiveness and your profound personality, he expresses itself best when this configuration is strongly featured. Indeed, you form a whole block and there is no discrepancy between your real identity, as perceived by you and your close friends, and the image you project.

With this nice association, your behaviour matches your true nature. You act externally according to your willpower, without filter, nor reservation. It endows you with a wilful, personal and magnetic temperament. You attract, you charm and when you are in the middle of a crowd or a meeting, your personality stands out with depth and brilliance because you have the kind of radiance and warmth that can never go unnoticed.

With this configuration, the only goal in your life is to assert yourself, proudly and decidedly, through what you are and through your actions, everywhere you go. Your ambition is to experience your temperament to the fullest, in all areas. You are sheer energy in motion. There is no gap between the image you project and your real self and for this reason, your inner qualities are never wasted.

The other side of the coin is that people may find that you are self-centered and that you do not take people's opinions into account... Practice some humility if you can, because too much magnetism may arouse fears in people who do not know you yet.

The ruler of your chart is in the 2nd House

The ruler of the Ascendant, also referred to as the chart ruler as explained in a previous chapter, is also posited in one of the twelve Houses of the chart. Just like the Sun in his House, the ruler of the Ascendant provides certain abilities, or it makes you appreciate more keenly certain areas of life.

The ruler of your chart is in the 2nd House, Jean-Claude Van Damme. This position in the House of money earned through work may facilitate the way you deal with financial matters, and may give you the desire to work even harder. Your material situation often improves at the age of thirty.

Aspects influencing your ambitions

Regarding your destiny or your career, the following aspects of your natal chart allow to fine-tune what has just been said above:

★★★★★ Venus trine Midheaven, orb 0° 27'

In your natal chart, Jean-Claude Van Damme, sweet Venus is in soft aspect with your Midheaven. It means that your natural charm and the way you express your feelings are appreciated in society. Usually, this configuration speeds up the achievement of your professional goals, or in any case, of a certain social status. A female - or females - may prove helpful for your career or your destiny.

★★★★★ Sun square Midheaven, orb -0° 26'

What you really want to do, or the way you consider everything, may be in contradiction with your professional goals, Jean-Claude Van Damme. You may experience conflicts of authority, or a few hesitations over how to manage your career. In any case, you must display flexibility and water down your wine if you want to remain on the right track and achieve professional success. It is the only solution to this discrepancy between the Sun and your Midheaven.

★★★★★ Sun sextile Uranus, orb -0° 05'

This aspect reinforces the determination as well as the will to further your original, sometimes revolutionary, ideas and designs. Your capacity of innovation is important for your image. You have the soul of a leader. You display a forceful and synthesizing mind. You may tend to oversimplify or to schematize situations. In most cases, you know where you are heading to and how to reach your goals. Your determination is two-edged... not everybody will appreciate your contrasted standpoints. It is yes or no, black or white! This planetary configuration indicates certainties. When it comes to acting according to your inner motivations and to respecting your models, you can show an unusual willpower and sweep aside all obstacles lying on your path.

★★★★★ Moon sextile Midheaven, orb 1° 34'

Your sensitivity and your emotions are in line with your goal and your ambitions, Jean-Claude Van Damme. You do not need to curb your temper lest other people have a wrong perception of you. Indeed, by being your true self, very simply, your social ascent will unfold naturally.

★★★★★ Sun sextile Jupiter, orb 3° 51'

This harmonious Sun-Jupiter aspect indicates an optimistic background that usually wins the entourage's adherence. It also suggests ambition and generosity and favours social integration and success. The desire to earn general consideration prompts you to display energy, joviality and benevolence. However, opportunism may be the other side of the coin. As you strive to win everyone's

esteem, you may fall into disrepute. It is important that you remain clear-sighted so as to persistently pursue your long-term aims without believing that you should always « grab each and every opportunity ». However, this aspect remains an element of success because it allows you to adjust your objectives to the context, to whatever the situation offers or, on the contrary, to force your way through events and to achieve your ideals.

★★★★★ Mercury trine Midheaven, orb -5° 54'

Mercury in soft aspect to your Midheaven enables you to easily communicate with your entourage and to climb up the social ladder, Jean-Claude Van Damme. Your strategy is often good, and you correctly think about your interests. Do not change anything!

★★★★★ Uranus semi-sextile Midheaven, orb -0° 21'

Thanks to this soft aspect of Uranus to your Midheaven, Jean-Claude Van Damme, you are endowed with the gift to let yourself be carried away by the changes cropping up on your way. Instead of being disheartening, modifications affecting your professional or social environment... stimulate you! Then, you may show opportunism, in the good sense of the word, and throughout your life, you may experience strokes of good luck, the consequences of which can be increased, thanks to your talent and your lack of fear whenever you face newness.

Your Assets and Your Part of Joviality

This is the best possible position for the planet of Greater Fortune in your chart, Jean-Claude Van Damme! It offers a lot of human warmth (or it counterbalances introversion, if such propensity is indicated elsewhere in your chart), the taste for travels, optimism, vitality and an enterprising mind. You are mobile and you have a large vision. Wisdom starts with the ability to consider life from a different angle and to put all things into perspective!

Jean-Claude Van Damme, the position of the planet of Greater Fortune in this astrological house brings about easy interpersonal relations, your siblings' love, great communication abilities within your neighbourhood, and pleasant short trips throughout your life.

The planet Jupiter symbolizes expansion, broadness and generosity. Jupiter is associated with the functions of synthesis, enthusiasm and optimism. In your natal chart, his house position is more important than his sign position because, like Saturn, Uranus, Neptune and Pluto, he is a slow planet. Many people born in the same period have Jupiter in the same sign. This is the reason why the sign occupied here is less meaningful than when it is occupied by the so-called fast planets, i.e. the Sun, the Moon, Mercury, Venus and Mars. Therefore, some caution is to be exercised as you read what follows.

Jupiter in Sagittarius is very popular because he rules this sign, and, according to the Tradition, he is most potent and at his best. He endows you with all his natural qualities: enthusiasm, sense of humour, boldness, warmth, optimism, leadership, synthesizing mind, but also, propensity for travels or, symbolically, disposition for higher knowledge and matters such as spirituality, philosophy, politics or religion.

Your Serious Side

Precision, slow progress, huge concentration capacity, and exceptional but... hidden ambition are your features. With time, you acquire the ineffable certainty that your values will be acknowledged and that your organizational abilities as well as your long-term aims are the keys to your success.

Impersonal detachment or cold-looking demeanours may hamper your communications, Jean-Claude Van Damme, although they increase your concentration, your patience, and your ability to study and to accumulate knowledge. As far as your entourage is concerned, quality prevails over quantity, and you can easily alternate agitated and eventful periods with periods of solitude.

Your challenge is certainly to make an effort in order to be less demanding from people and to keep a minimal number of relations. Nobody is perfect, and neither are you! Pay attention to people's qualities and forget their flaws, for they should not prevent you from enjoying their company.

The planet Saturn symbolizes contraction, effort, time, limitation and concentration. Saturn eliminates anything that is not authentic, sooner or later. It is impossible to cheat him as he gives an irresistible desire to form a coherent whole with oneself, in responsible and wise ways. He is the great purifier. He represents our limitations but also our truth. In your natal chart, the house position where Saturn is posited is more important than his sign position because, like Jupiter, Uranus, Neptune and Pluto, he is a slow planet. Many people born in the same period have Saturn in the same sign. This is the reason why the sign occupied here is less meaningful than when it is occupied by the so-called fast planets, i.e. the Sun, the Moon, Mercury, Venus and Mars. Therefore, some caution is to be exercised as you read what follows.

Saturn in Capricorn is in his own sign, and according to the Tradition, he is most potent and at his best: he increases your toughness, your seriousness, and above all, your long-term management capacities. You are persevering, resistant, hard-working, ambitious and you are aware of the fact that time is on your side. Your reputation is that of a sober and stern person but you are respected and acknowledged for your wisdom and your authenticity.

A Few Special Points

Your Uniqueness and Your Utopias

This is one of the most potent configurations. Unexpected disruptions of considerable intensity often occur on the factual plane. Embracing changes is the basis of the success of your destiny, which is very likely to include extreme variations, sometimes towards the most glorious heights, sometimes towards ordeals that you face with courage and determination, despite your unpreparedness.

Originality is certainly the context of your professional life or your destiny, in one way or another. Whether it is expressed through your very special area of expertise (high technology, space, aviation, astrology, television, etc.) or through the totally hectic nature of your progression (sudden changes of orientation), you are not able to plan what is coming next. Unforeseen events undertake to make a clean sweep of your certainties. This may offer many advantages if your state of mind is ready to approach life as a journey where your only freedom is to adjust in the best possible way to new emerging situations.

Most of the time, you are very independent, very keen to show your professional talents in a unique and modern way. You are a kind of pioneer or rebel in your area, which allows you to better assert your genius.

Your Inspiration and Your Illusions

You are particularly sensitive, intuitive, and you have a very fertile imagination. You may seem mysterious to others, actually to yourself, too, and you may be unaware of the consequences your actions may trigger because you are wrapped up in nebulous impressions and cut off from the material world.

Your behaviour may be surprising because your sixth sense is so developed that you may adopt a completely different attitude and amaze your entourage by your very sharp perception of things that is often beyond ordinary mortals' understanding.

You are interested in new experiences that may not be respectful of proprieties or moral standards, just for fun and due to a certain degree of carelessness... You feel that you are beyond the law and rules, and your emotionalism may take you too far.

Your Passion and Your Authority

Your approach to friendship is peculiar, and your affective tendency is to commit yourself in an intense and passionate way. In other words, you do not want to, or you cannot be satisfied with a light and superficial friendship where you lose sight of your friends or meet with them sporadically. It is all or nothing, with you. Preferably all, of course, with the potential for evolution and transformation for both you and your friends.

In most cases, all is well, as long as your friends' character puts up with a relationship that may appear as burdensome, or even threatening, due to your desire for domination. You tend to influence your friends and to show your might. When they resist you or antagonize you, it is hard for you to remain cool.

Passion and friendship certainly get along well and, more generally, you may exercise your influence and play a major role in team works, within collective projects.

Your friendships, as well as the supports and protections granted to you, are likely to bring about both the better and the worse. If you are aware of that, you may become able to choose only the better.

Your Isolated Planets

In general, the ten planets of the chart are connected to other planets by major or minor astrological aspects. It is owing to those ties that the planets' energies can manifest in the chart owner's personality and play out within safeguards according to a specific tonality.

It seldom happens that in a natal chart, a planet is totally disconnected from the nine other planets.

Astrologers have observed that when such a case occurs, the person feels the energy of the unsuspected

planet in quite a singular way, very jerky and powerful at the same time. Thus, for instance, the famed astrologer Jean-Baptiste Morin de Villefranche wrote that "an unaspected planet heralds that something strange or extraordinary will take place regarding the meanings of the house in which the said planet is posited" (source : l'astrologie selon Morin).

Rules for detecting an unaspected planet: among all the testimonies that we have reviewed to this day, based on our experience, we tend to agree with American astrologer Janis Huntley who accepts seven aspects, which involve the zodiacal twelve sections of 30 degrees. The aspects to be considered are the conjunction (0 degree, cooperation or tension), the semi-sextile (30 degrees), the sextile and the trine (60 and 120 degrees respectively, aspects of cooperation), the square and the opposition (90 and 180 degrees respectively, tensed aspects), and the quincunx (150 degrees, slightly tensed). In this detection, the chart's angles are not taken into account.

In any case, it is important to remember that an isolated planet clearly expresses its influence when it is a personal planet. Thus, when the Sun, the Moon, Mercury, Venus, or Mars is isolated, it is certain that the effects described by Jean-Baptiste Morin de Villefranche will become manifest. As for Jupiter, Saturn, Uranus, Neptune, and Pluto, one must be cautious because the volume of cases documented is not yet large enough.

Your chart has no isolated planet, and this particular case does not apply to you.

Annex 1: Your Minor Dominants

The five following dominants are less significant than those described at the beginning of your report. They may not be strongly felt. In some cases, they add several minor details to the analysis of your character, but they are rather for curiosity purposes. It is not necessary to take them into account when you first read your portrait.

Your Planetary Repartitions: Northern, Southern, Eastern and Western Hemispheres

The axis linking the 1st house's cuspide (the Ascendant) to the 7th house's cuspide - the Descendant - divides the zodiac into two bowls, a superior bowl, in the South, and an inferior bowl in the North. Quoting an expression by the famous American astrologer Rudhyar, the Southern part and the Northern part correspond to two functions: "being" and "doing". Other concepts are also associated with this North and South distribution, such as introversion - Northern hemisphere - and extraversion - Southern hemisphere - being or appearances, inner life or external life, reflection or action, dreaming one's life or living one's dreams, the abstract or the concrete, backstage or limelight.

This is not about determination but about personal inclination: thus, some people will be thrown into public life despite a prominent Northern hemisphere. If this happens, however, it will not be due to their will, their taste or their deep nature. Conversely, a prominent Southern hemisphere will not bring about a famous destiny to its owner, even if he tends to turn the spotlight on himself, or if he looks for a more active life. It is a matter of deep nature and natural inclination. Of course, none of the typologies is "superior" to another.

In your birth chart, Jean-Claude Van Damme, the ten main planets are distributed as follows:

Your Northern and Southern Hemispheres



Jean-Claude Van Damme, the predominance of planets in the Northern hemisphere prompts you to reflect and imagine rather than to exteriorize your actions and to be at the forefront of the stage. So, should you wish to remedy this situation, it is up to you to force your nature to take action in broad daylight, to communicate, and to assert yourself... then, you can move forward in this concrete life and enjoy your newly won situation.

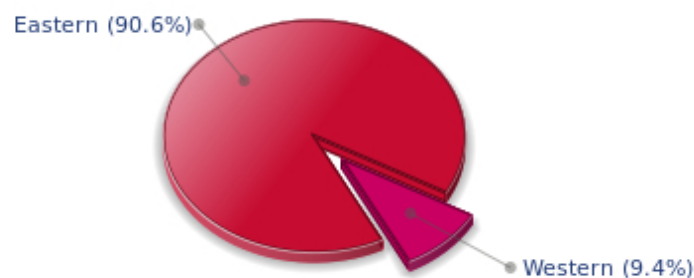
The birth chart is divided into two other parts, Eastern and Western, by the axis linking the Midheaven

to the Imum Coeli.

The Eastern part, on the Ascendant side, shows the person's ego, will, magnetism, and vitality, whereas the Western part, on the Descendant side, symbolizes other people, communication, relationships and their influence, as well as flexibility and adaptability.

Jean-Claude Van Damme, here is the planetary repartition in your Eastern and your Western hemispheres:

Your Eastern and Western Hemisphere:



The predominance of planets in the Eastern hemisphere of your chart enables you, Jean-Claude Van Damme, to assert yourself and to rely on your determination: you know what you want and you have a tendency to take action and to decide with your personal goals as priorities, even if they can be in contradiction with what others think.

A definite asset... provided that you never make mistakes in your choices. You should pay more attention to your entourage in order to counterbalance your nature and to take advantage of your assets wisely. The danger is that you may be too authoritarian and not conciliating enough. Strong determination coupled with flexibility and acute sense of communication are qualities you should develop.

Your Yin and Yang Polarity

The twelve signs are divided into two polarities, called active or passive, or sometimes masculine and feminine, positive and negative, Yang and Yin. This classification corresponds to two quite distinct tonalities, the first one bringing extraversion, action, self-confidence and dynamism, the second one, introversion, reactivity, reflection and caution. None is superior to the other, each group has its own assets and shortcomings. Odd signs - Aries, Gemini, Leo, Libra, Sagittarius and Aquarius - belong to the first group, whereas even signs - Taurus, Cancer, Virgo, Scorpio, Capricorn and Pisces - belong to the second group.

Your Yin and Yang Polarity



According to the disposition and qualities of your planets and angles, you are rather influenced by Yin energy, the passive polarity, Jean-Claude Van Damme: you are quite introverted, imaginative and sometimes discreet, but you are a deep and wise person who is not content with just noisy and flashy things. At times, you doubt but you think that those who don't are a bit... thoughtless. Allow yourself to take more laid-back attitudes and put your reserve aside, because good equilibrium is always healthier.

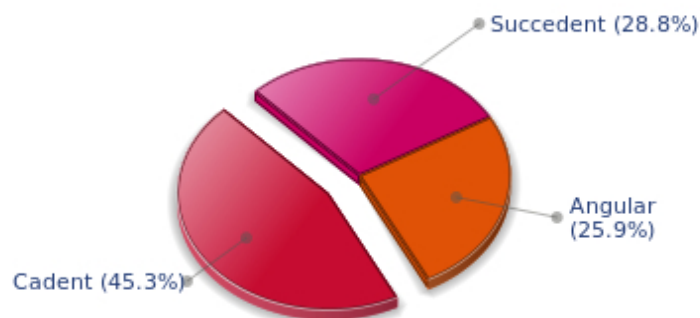
Your Houses' Accentuations

Houses are split up into three groups: angular, succedent and cadent.

The first ones are the most important ones, the most "noticeable" and energetic houses. They are the 1st, 4th, 7th and 10th houses. Their cusps correspond to four famous angles: Ascendant for the 1st house, Imum Coeli for the 4th house, Descendant, opposite the Ascendant, for the 7th house and Midheaven for the 10th house, opposite the Imum Coeli.

Planets are evaluated according to a whole set of criteria that includes comprehensive Western astrology rules. At their turn, planets emphasize specific types of houses, signs, repartitions etc., as previously explained.

Your Houses' Accentuations



Cadent houses, namely the 3rd, 6th, 9th and 12th houses, are very emphasized in your chart, Jean-Claude Van Damme. They indicate important potential for communication, adaptability and flexibility. These houses are symbolically linked to the mind and intellect. The relative weakness implied by these characteristics indicates your tendency to hesitate or to be indecisive, but also your remarkable ability to start off again, which is a nice quality, finally: you can easily get yourself out of a tight spot thanks to your mobility and casualness, in the best sense of the term. This group of houses corresponds to evolutionary characteristics of your personality. However, they are only indications and you must include them in the rest of your chart in order to see whether they are validated or not!

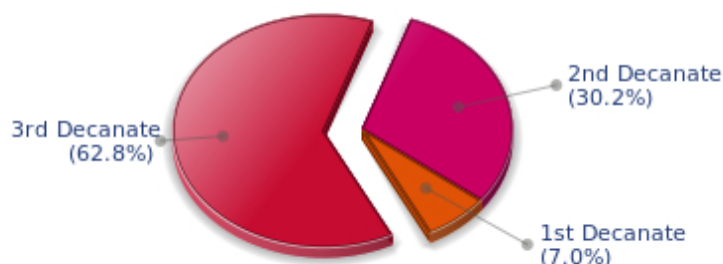
Your Esoteric Decanates

Each sign contains 30 degrees and can be divided into three equal parts: the decanates. The Tradition indicates that specific meanings can be associated to each of the three decanates. Their sphere of activity is usually limited to the Sun sign, however, it is even more interesting to observe the distribution of all the planets in the chart to get an idea of the respective importance of the three decanates, which can complement the description of the personality.

These meanings must be considered with the greatest caution. Indeed, they are minor characteristics that can only underline other outstanding traits of character.

Traditionally, the first decanate highlights the characteristics of the sign where a planet is located. The two other decanates correspond to sub-dominant planets, depending on the nature of each sign. This system leads to a multiplication of meanings and it is impossible to have a clear understanding: here, we prefer to give only the meaning of one decanate in comparison with the other two, within the birth chart as a whole. Again, the greatest caution is needed with regard to this minor indication as it is not always reliable: it is not essential that you read these texts in the beginning. You can get back to them later on, once you have read more important interpretations

Your Esoteric Decanates



The third decanate, which means the part between 20° and 30° of any zodiacal sign, prevails in your natal chart, Jean-Claude Van Damme. It contains the degrees of spirituality, traditionally more delicate to deal with, since they incline towards evolution and therefore, destabilizations. Individuals with an emphasised third decanate may have deeper sensitivity than most people, which often brings ordeals but also spiritual rewards.

Annex 2: Karmic Study

The karmic theme is a good complement to the psychological portrait, or natal chart. This analysis is based on the positions of the Lunar Nodes, the Black Moon and the Part of Fortune: they are also called fictitious points and describe the spiritual purpose of your destiny. Because there is in all of us an experience and a quest, our life is an evolutionary journey... provided that we head towards the right direction, of course! Indian astrologers highly prize the Nodes axis (North Node and South Node). It is the Ariadne's thread that we are invited to follow. The Black Moon indicates the sector where we are most likely to transform or to transcend, whereas the Part of Fortune points out the area where we can easily express our specificity.

The Lunar Nodes: a spiritual path

Lunar Nodes have their roots in the Indian tradition and they are based on a simple concept: each of us have a mission of their own, here on earth, a destiny, a course. According to the Indian philosophy, life is a school: the nodal axis describes our past experiences (South Node, our karma, our spiritual inheritance or our previous lives), and our aims on earth (North Node, our Dharma, the purpose of our current incarnation). This is the reason why the study of the lunar nodes is called "Karmic astrology". Here, we shall not step into hypothetical past lives. Wherever our current trends may come from, all that really matters is that we become aware of the purpose of our life, its finality and our dharma. We are likely to understand our life purpose around the age of 37, when the Lunar Nodes return to their natal position.

A part of you is bohemian: you may shirk realities (at least during the first years of adulthood) and you keep your distance from the constraints of this world! However, life reminds you of them... As years go by, you show more pragmatism. Of course, you must keep your assets: a sharp intuition of people and things, a profitable detachment that allows you to cope with daily petty things. But you must also control the vagaries of life that may fall into the bad side of a "bohemian life" if you are not careful. The consequences may be setbacks and delusions that will cease only when you become aware of realities. As you progress, you may be a therapist who heals the body (a medical occupation)... or the soul because you are altruistic and you know how to listen.

Very early in life you showed a strong desire to intensely live through your passions. You are sensitive to your personal prestige and you adopted dramatic attitudes as you needed your merits to be acknowledged and you wanted to arouse esteem and admiration. Your individualistic ways may have caused setbacks: you are criticized for your egocentrism or at least, for your lack of openness and compassion. As time goes by, your life's challenge is probably to gain a taste for collaborations, fraternity, and unselfish love. If you can put aside your touchiness, you become able to relinquish your pride and to focus your energy on larger actions such as collective tasks, or even, universal works. Life teaches you a philosophy of harmony and union, far from your primary desires and needs. You then discover an entirely different realm, a spiritual dimension, the major features of which are abnegation, selflessness and the access to a world of altruism that provides more satisfactions than anything else. Self-sacrifice, friendship and fraternity are the path to your fulfilment.

Lilith or the Dark Moon

The Black Moon is the spark of refusal and distance that is dormant in all of us. Depending on the sign where she is found in your chart, she highlights the desire to transform and to sublimate a part of your life. The Black Moon is unfathomable and mysterious. She gives a different dimension to the sector she touches. Her manifestations are subtle; nonetheless, she is powerful, implacable, demanding to the

extreme... The Black Moon is also called Lilith. She is the inner flame of your heroism and insubordination.

You pay special attention to your familiar and intimate realm: an importance and a demand, too. You are in search of a setting into which you can totally merge. You do not appreciate half-measures in the family: you want the perfect osmosis or nothing at all! In the long run, this will melt your attitudes into your entourage's may become the cornerstone for a near-to ideal union. However, the danger is that you may shut out solicitations, inevitably disturbing, which are not from your clan.

The notion of freedom takes a special meaning: to be free does not only mean being able to move as you please here and there, nor does it mean having a few hours of leisure available. Above all, it means being able to lead a spiritual quest, to access a different dimension in life: to encounter, to travel, to love and to never be hampered by contingencies, never be slowed down by daily life. That'll take some doing! The comfortable routine of the contemporary world, in this regard, puts you off.

The Part of Fortune in House

The Part of Fortune is a very ancient fictitious point that depends on the lunar phase at the time of birth. The astrological house tenanted is particularly strengthened. In your chart, the Part of Fortune is in the 2nd house: acquisition and possession are the keywords for the axis of your activities. You work with a view to grow rich (on the material or on the spiritual plane), to accumulate goods and experiences. As you want to have a fulfilling life, you focus your energy on social projects and you take a fair share of the worldly cake. With your persistence, you will dedicate an unusual energy to your goals.

Conclusion

A few remarks are needed here in order to allow you to fully take advantage of your astrological portrait: firstly, do not forget that a birth chart is also a photograph of the sky at birth and a structure that not only contains the personality's characteristics, but also its potential evolution.

We all know that, in real life, people begin to know themselves when they are in their forties, or even later. Likewise, several traits of character in a portrait may seem surprising: in most cases, it means that such features are not yet developed.

Some personalities reveal themselves late in life, whereas others are more precocious. It must be remembered that psychological structures are in a state of continuous evolution because they are influenced by unfolding events and gradual maturity. We can never underline strongly enough the "mobile" nature of the personality, throughout a lifetime.

On the other hand, it is difficult to discriminate what is "already present" at this moment in your life when you are reading your chart's interpretation, from what will appear later in the logic of your evolution: you must sort out all the pieces of information provided and, in most cases, you will see that your astrological portrait is helpful for your endeavours to know yourself better.

Finally, several readings of an astrological portrait are usually necessary in order to absorb all its different meanings and to evaluate the relevance of each character trait.

In any case, better self-knowledge obviously contributes to faster personal blossoming, and it is undoubtedly one of astrology's major roles: contributing to know oneself better, in order to improve more rapidly, to deal with one's weaknesses and to avoid its drawbacks, and to take advantage of one's assets as efficiently as possible.
