

**Guy de Maupassant's
Astrological Portrait**





Guy de Maupassant's Astrological Portrait



Introduction	2
Your Planets, Houses, Aspects, and Natal Chart	4
Preamble	7
Your Planetary Repartitions	8
Your Dominant Modes and Elements	9
Your Dominants: Planets, Signs and Houses	10
Your Style, Behaviour, and Peculiarities	15
Your Sensitivity	19
Your Affectivity	20
The Way You Take Action and Your Sexuality	21
Your Intellect and Your Communication Style	22
Your Goals, Motivations, Career, and Destiny	23
Your Assets and Your Part of Joviality	26
Your Serious Side	27
A Few Special Points	27
Your Isolated Planets	28
Annex 1: Your Minor Dominants	30
Annex 2: Karmic Study	34
Conclusion	37



Guy de Maupassant's Astrological Portrait

Introduction

To fully benefit from this portrait, we suggest that you read its introduction and its preamble carefully, and then that to take the time to soak up the interpretations of each chapter. Given the large number of texts, which mirrors the human being's complexity, you may need to go through the contents several times, so as to get a good grasp of their meaning and to know yourself better. This will reward your patience.

The purpose of this report is to describe your psychological portrait and to highlight the most fundamental features on the personal area. The report begins with the analysis of your planetary dominants and outlines your personality's general traits before going into further detail. Minor dominants are analysed at the end of Annex 1, for purposes of clarity. Your report then delineates the various facets of your personality:

In general, even when relationships are not involved, we express ourselves and we feel according to our character and our personal motivations: this is indicated by the Ascendant and the Sun sign which both give details on the way we function. They shed a tremendously important light which allows to figure out your personality. Here, we describe your Sun sign (your inner self), your Ascendant (your behaviour as seen by others), and the ruler of the Ascendant (interesting additional pieces of information about the style of your personality). These descriptions alone cover nearly a third or a half of your psychological signature, depending on your natal chart characteristics.

Then, we address your sensitivity, or in other words, the way you receive things and how you express your emotions ; it works as a constant filter for all your exchanges, even when it becomes a more secondary element in your amorous relationship, because at that moment, affectivity prevails. Sensitivity is the way you perceive things, it is your radar, your daily mood, and at the same time, it indicates how you react to your entourage, on a daily basis. It is what others immediately see of you. In the second paragraph, we explain in which areas of life your sensitivity and your emotions are strongest, therefore, where you are most vulnerable.

After this, it is your affectivity, the way you love and how you charm, that comes into play as soon as you fall in love: the first part indicates its basic structure or its main form. The second part describes the areas where it is best expressed and how you display it, according to your personality.

A third fundamental area deals with your mode of action and your sexuality: how you behave, how you manage to obtain what you want, what kind of desires you have. There are twelve possibilities, very

different from one another. The study discloses the specific one that applies to you. In the second paragraph, we explain in which life areas you may most efficiently take advantage of your capacity for action and for conquest.

Your ways of communicating and of thinking are obviously among the major elements that must be integrated into the delineation and the description of your personality. Indeed, they influence your general behaviour and may modify or enhance the image your project (for instance, extraversion may “compensate” a weak affectivity, but a huge number of cases are possible). An additional chapter indicates the favourite areas where you enjoy communicating, thinking and meeting with people.

Besides, we analyze an even more personal aspect that is important to define and understand what may occur within your couple: each of us have a centre of interest, a privileged manner to be fulfilled or to achieve our destiny; this main motivation is indicated by the positions of your Sun and your chart ruler in the astrological houses and we provide you with its detailed description.

A natal chart contains the potential for specific fulfilment and a whole range of assets, protections and qualities. How does the lucky factor manifest in your personality? In which area can you best exploit your qualities? The answers are precisely revealed to you in this chapter.

On the other hand, we all feel in us a part of vulnerability, doubts and fears. How does this part of solemnity or serious side play out? How is it possible to handle it in order to evolve and to get rid of useless elements? All this information is provided to you in these two paragraphs.

Then, you can discover three additional traits of your personality that must be considered as secondary ones. They deal with your predispositions, which means that they need to be triggered by external events because they are not influenced by your will; let's call it a part of fate. Please, bear in mind that your destiny can unfold only in accordance with what you are: therefore, even if they belong to your more unconscious self, these characteristics are parts of you, definitely.

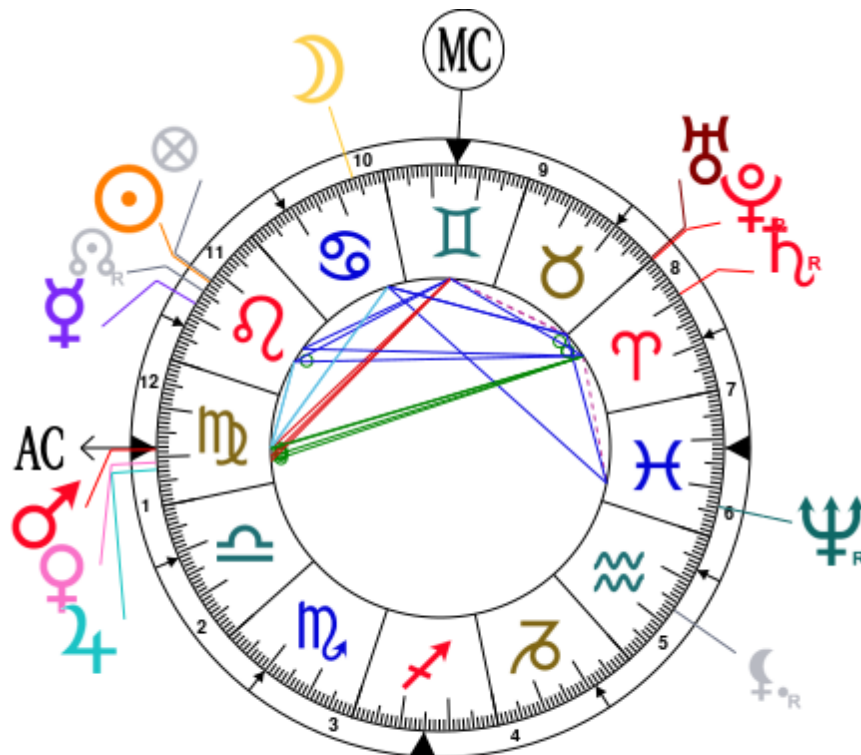
The karmic chart complements the psychological portrait or natal chart. It is based on the positions of the Lunar Nodes, the Black Moon, and the Part of Fortune. These elements of the chart, sometimes referred to as fictitious points, provide information about the spiritual meaning of your destiny. Owing to the fact that we all have in us acquired knowledge and the urge to go on a quest, our life is an evolutionary journey... However, these texts must be read with great caution: this is the reason why you will find this analysis in the Annex 2 of your report.

Your Planets, Houses, Aspects, and Natal Chart

Guy de Maupassant, born August 5, 1850, at 08:00 AM, Tourville-sur-Arques (Haute-Normandie), France [1.06E ; 49.51N ; 0E04]

Natal Planets				In House	Natal Houses (Placidus)	
☉ Sun	12°29'	♌ Leo	House 11	House 1	18°13'	♍ Virgo
☾ Moon	6°14'	♋ Cancer	House 10	House 2	11°03'	♎ Libra
☿ Mercury	17°40'	♌ Leo	House 11	House 3	9°57'	♏ Scorpio
♀ Venus	21°08'	♍ Virgo	House 1	House 4	14°54'	♐ Sagittarius
♂ Mars	18°34'	♍ Virgo	House 1	House 5	21°19'	♑ Capricorn
♃ Jupiter	22°36'	♍ Virgo	House 1	House 6	22°42'	♒ Aquarius
♄ Saturn	21°00' R	♈ Aries	House 8	House 7	18°13'	♓ Pisces
♅ Uranus	0°19'	♉ Taurus	House 8	House 8	11°03'	♈ Aries
♆ Neptune	6°16' R	♓ Pisces	House 6	House 9	9°57'	♉ Taurus
♇ Pluto	29°51' R	♈ Aries	House 8	House 10	14°54'	♊ Gemini
♁ Node	14°42' R	♌ Leo	House 11	House 11	21°19'	♋ Cancer
♇ Lilith	13°25' R	♒ Aquarius	House 5	House 12	22°42'	♌ Leo
AS AS	18°13'	♍ Virgo				
MC MC	14°54'	♊ Gemini				

In keeping with the common practice, we consider that a planet posited within 1 degree of the next house belongs to that house. We allow an orb of 2 degrees for the ASC and the MC.



List of Your Active Planetary Aspects

Please find below the list of all the active inter-aspects which are interpreted in this report, in addition to your planets in sign, in house, and all your planetary dominants. Since the aspects between slow-moving planets are of a collective nature, they are not displayed, in compliance with our interpretation rules.

- ★★★★★ Sun conjunction Mercury, orb 5° 1'
- ★★★★★ Sun trine Saturn, orb -8° 31'
- ★★★★★ Sun sextile Midheaven, orb -2° 25'
- ★★★★★ Moon quintile Mars, orb 0° 2'
- ★★★★★ Moon sextile Uranus, orb 5° 54'
- ★★★★★ Moon trine Neptune, orb -0° 02'
- ★★★★★ Moon sextile Pluto, orb 6° 22'
- ★★★★★ Moon quintile Ascendant, orb 0'
- ★★★★★ Mercury semi-sextile Mars, orb 0° 54'
- ★★★★★ Mercury trine Saturn, orb -3° 2'
- ★★★★★ Mercury semi-sextile Ascendant, orb 0° 33'
- ★★★★★ Mercury sextile Midheaven, orb 2° 45'
- ★★★★★ Venus conjunction Mars, orb 2° 34'
- ★★★★★ Venus conjunction Jupiter, orb 1° 27'
- ★☆☆☆☆ Venus inconjunction Saturn, orb 0° 08'
- ★★★★★ Venus conjunction Ascendant, orb 2° 55'
- ★☆☆☆☆ Venus square Midheaven, orb 6° 13'
- ★★★★★ Mars conjunction Jupiter, orb 4° 01'
- ★☆☆☆☆ Mars inconjunction Saturn, orb -2° 25'
- ★★★★★ Mars conjunction Ascendant, orb 0° 2'
- ★★☆☆☆ Mars square Midheaven, orb 3° 39'
- ★☆☆☆☆ Jupiter inconjunction Saturn, orb 1° 35'
- ★★★★★ Jupiter conjunction Ascendant, orb 4° 22'
- ★☆☆☆☆ Jupiter square Midheaven, orb 7° 41'
- ★☆☆☆☆ Saturn inconjunction Ascendant, orb -2° 46'
- ★★★★★ Saturn sextile Midheaven, orb -6° 05'
- ★☆☆☆☆ Uranus semi-square Midheaven, orb -0° 24'
- ★★☆☆☆ Pluto semi-square Midheaven, orb 0° 02'

Meaning of Stars

Stars indicate the strength of the aspects. Two solid coloured stars (there are half-stars also), mean that the aspect is powerful enough to be noticed at the first reading.

We strongly advise that you read the paragraphs displaying less than two stars later on, after you have absorbed the full import of the other texts.

The yellow colour indicates a soothing and conciliating aspect, and the red colour, a dynamic and tense aspect. The red aspects enable you to evolve, to take action, and to learn to turn your "weaknesses" into assets through your life experiences. The yellow aspects are innate strengths on which you rely in order to grow better with the former...

Preamble

When interpreting a natal chart, the best method is to start gradually from general features to specific ones. Thus, there is usually a plan to be followed, from the overall analysis of the chart and its structure, to the description of its different character traits.

In the first part, an overall analysis of the chart enables us to figure out the personality's main features and to emphasize several points that are confirmed or not in the detailed analysis: in any case, those general traits are taken into account. Human personality is an infinitely intricate entity and describing it is a complex task. Claiming to rapidly summarize it is illusory, although it does not mean that it is an impossible challenge. It is essential to read a natal chart several times in order to absorb all its different meanings and to grasp all this complexity. But the exercise is worthwhile.

In brief, a natal chart is composed of ten planets: two luminaries, the Sun and the Moon, three fast-moving or individual planets, Mercury, Venus and Mars, two slow-moving planets, Jupiter and Saturn, and three very slow-moving planets, Uranus, Neptune and Pluto. Additional secondary elements are: the Lunar Nodes, the Dark Moon or Lilith, Chiron and other minor objects. They are all posited on the Zodiac wheel consisting of twelve signs, from Aries to Pisces, and divided into twelve astrological houses.

The first step is to evaluate the importance of each planet. This is what we call identifying the dominant planets. This process obeys rules that depend on the astrologer's sensitivity and experience but it also has precise and steady bases: thus, we can take into account the parameters of a planet's activity (the number of active aspects a planet forms, the importance of each aspect according to its nature and its exactness), angularity parameters; (proximity to the four angles, Ascendant, Midheaven, Descendant and Imum Coeli or Nadir, all of them being evaluated numerically, according to the kind of angle and the planet-angle distance) and quality parameters (rulership, exaltation, exile and fall). Finally, other criteria such as the rulership of the Ascendant and the Midheaven etc. are important.

These different criteria allow a planet to be highlighted and lead to useful conclusions when interpreting the chart.

The overall chart analysis begins with the observation of three sorts of planetary distributions in the chart: Eastern or Western hemisphere, Northern or Southern hemisphere, and quadrants (North-eastern, North-western, South-eastern and South-western). These three distributions give a general tone in terms of introversion and extraversion, willpower, sociability, and behavioural predispositions.

Then, there are three additional distributions: elements (called triplicity since there are three groups of signs for each one) - Fire, Air, Earth and Water - corresponding to a character typology, modality (or quadruplicity with four groups of signs for each one) - Cardinal, Fixed and Mutable - and polarity (Yin and Yang).

There are three types of dominants: dominant planets, dominant signs and dominant houses. The novice thinks astrology means only "to be Aries" or sometimes, for example, "to be Aries Ascendant Virgo". It is actually far more complex. Although the Sun and the Ascendant alone may reveal a large part of the character - approximately a third or a half of your psychological signature, a person is neither "just the Sun" (called the sign) nor just "the first house" (the Ascendant). Thus, a particular planet's influence

may be significantly increased; a particular sign or house may contain a group of planets that will bring nuances and sometimes weaken the role of the Ascendant, of the Sun sign etc.

Lastly, there are two other criteria: accentuations (angular, succedent and cadent) which are a classification of astrological houses and types of decanates that are occupied (each sign is divided into three decanates of ten degrees each). They provide some additional informations.

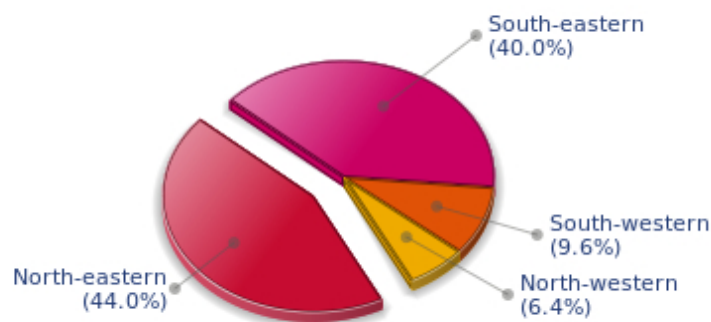
These general character traits must not be taken literally; they are, somehow, preparing for the chart reading. They allow to understand the second part of the analysis, which is more detailed and precise. It focuses on every area of the personality and provides a synthesis of all the above-mentioned parameters according to sound hierarchical rules.

As explained in the introduction of your Psychological Portrait report, minor dominants are analysed at the end of Annex 1, for purposes of clarity.

Your Planetary Repartitions

Each quadrant is a combination of the four hemispheres of your birth chart and relates to a character typology. The Southern hemisphere – the top of your chart, around the Midheaven – is associated with extraversion, action, and public life, whereas the Northern hemisphere prompts to introversion, reflexion, and private life. The Eastern hemisphere – the left part, around the Ascendant – is linked to your ego and your willpower, whereas the Western hemisphere indicates how other people influence you, and how flexible you are when you make a decision.

Your Four Quadrants

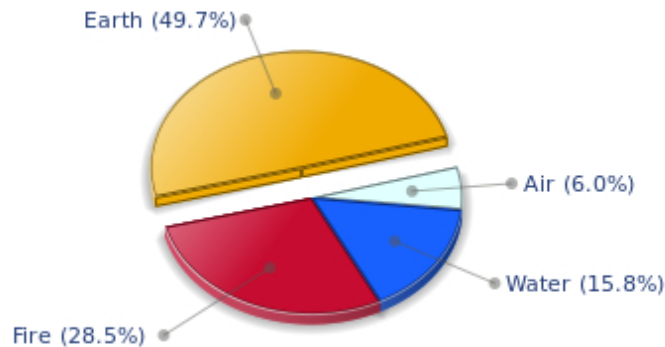


Guy de Maupassant, the nocturnal North-eastern quadrant, consisting of the 1st, 2nd and 3rd houses, prevails in your chart: this sector favours self-assertion and material security to the detriment of your perception of others. You consider self-transformation to be a hazardous adventure. You are inclined to seek stability and you tend to protect yourself with your actions. Possession, acquisition but also communication, without opening up too much, are part of your deep motivations. You are rather autonomous and constant, however it is important that you pay more attention to others, so that you can improve your outcomes.

Your Dominant Modes and Elements

Guy de Maupassant, here are the graphs of your Elements and Modes, based on planets' position and angles in the twelve signs:

Your Four Elements



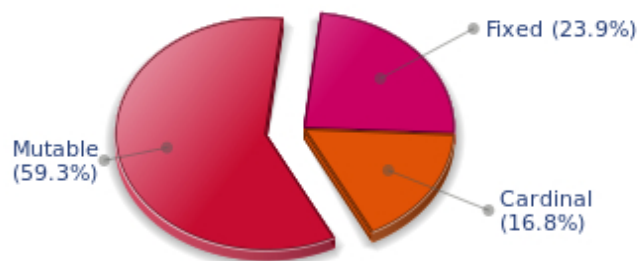
Like the majority of Earth signs, Guy de Maupassant, you are efficient, concrete and not too emotional. What matters to you is what you see: you judge the tree by its fruits. Your ideas keep changing, words disappear, but actions and their consequences are visible and remain. Express your sensitivity, even if it means revealing your vulnerability. Emotions, energy and communication must not be neglected; concrete action is meaningless if it is not justified by your heart, your intellect or your enthusiasm.

Guy de Maupassant, Fire is dominant in your natal chart and endows you with intuition, energy, courage, self-confidence, and enthusiasm! You are inclined to be passionate, you assert your willpower, you move forward, and come hell or high water, you achieve your dreams and your goals. The relative weakness of this element is the difficulty to step back or a kind of boldness that may prompt you to do foolish things.

Air is under-represented in your natal chart, with only 5.98% instead of the average 25%. Air symbolizes the values of communication, exchanges with others, but also adaptability and flexibility abilities: if you don't get out of your cocoon to talk, to show interest in others, and to socialize, you may have problems understanding others. Because of your lack of flexibility or of your refusal to adapt yourself, you may be suddenly overwhelmed by events. You should get into the habit of talking, of phoning, and of thinking in terms of "mobility, flexibility, adaptability, change" in every circumstance. It will spare you so many troubles!

The twelve zodiacal signs are split up into three groups or modes, called quadruplicities, a learned word meaning only that these three groups include four signs. The Cardinal, Fixed and Mutable modes are more or less represented in your natal chart, depending on planets' positions and importance, and on angles in the twelve signs.

Your Modes



The Mutable mode is the most emphasized one in your natal chart, Guy de Maupassant, which indicates a mobile character that is curious and thirsty for new experiences and evolution. You are lively and flexible, and you like to react quickly to solicitations, but don't confuse mobility with agitation, since this is the danger with this configuration - and with you, stagnation is out of the question. Security doesn't matter as long as you are not bored. You optimize, you change things, you change yourself... all this in a speedy way.

Your Dominants: Planets, Signs and Houses

The issue of dominant planets has existed since the mists of time in astrology: how nice it would be if a person could be described with a few words and one or several planets that would represent their character, without having to analyse such elements as rulerships, angularities, houses, etc!

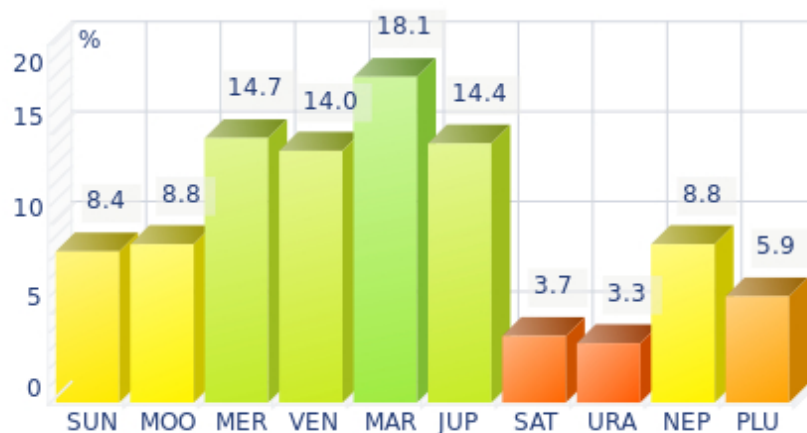
The ten planets - the Sun throughout Pluto - are a bit like ten characters in a role-play, each one has its own personality, its own way of acting, its own strengths and weaknesses. They actually represent a classification into ten distinct personalities, and astrologers have always tried to associate one or several dominant planets to a natal chart as well as dominant signs and houses.

Indeed, it is quite the same situation with signs and houses. If planets symbolize characters, signs represent hues - the mental, emotional and physical structures of an individual. The sign in which a planet is posited is like a character whose features are modified according to the place where he lives. In a chart, there are usually one, two or three highlighted signs that allow to rapidly describe its owner.

Regarding astrological houses, the principle is even simpler: the twelve houses correspond to twelve fields of life, and planets tenanted any given house increase that house's importance and highlight all relevant life departments: it may be marriage, work, friendship etc.

Guy de Maupassant, here is the evaluation diagramme for your planets:

Your Dominant Planets



The three planets that are most highlighted in your chart are Mars, Mercury and Jupiter.

Mars is one of your dominant planets and provides you with its efficient energy and enthusiasm: with a powerful Mars in your chart, action - but also will and ability to undertake - is not an empty word for you. You are active, dynamic, willing to fight, courageous, and you are never afraid to move mountains, even though risks are part of the adventures that you start with determination.

However, your patience is not always up to your boldness and a kind of feverishness, or even anger, can tarnish the quality of your achievements. That would be a pity since the Marsian is a champion in matters of efficiency! Mars symbolizes display of action, conquering spirit that favours discipline and order - beware of not being fussy - and lies at the frontier between action and brutality, between conquest and potential aggressiveness.

With Mercury among your dominant planets, you are certainly cerebral, nervous, swift, curious, quick-witted, and you love to communicate. Your psychological pattern is intellectual, all the more so since Mercury is important, with its whole set of assets but also of weaknesses, obviously.

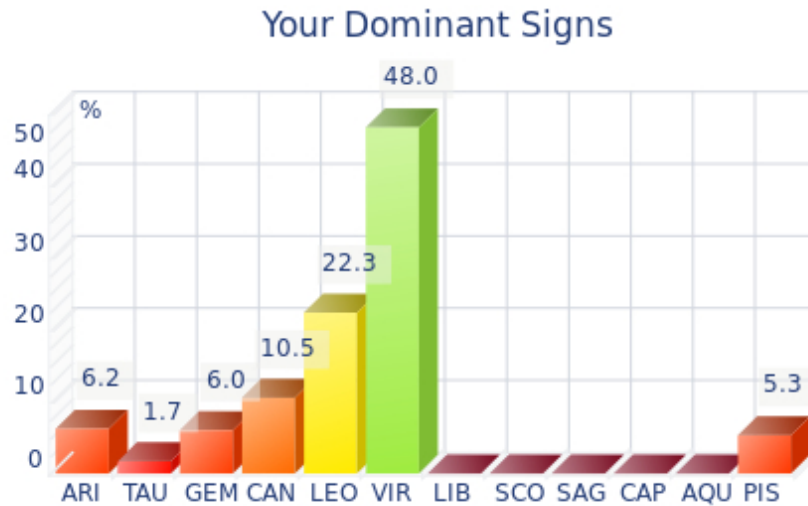
Your sensitivity, emotions, and heart's impulses give precedence to thinking, which can lead people to believe that you are a playful and witty but heartless person, intellectualizing situations and juggling with words and numbers whilst ignoring human aspects of things. Of course, it is said that cats always land on their feet - this is your Mercurian strength and your trump card!

Your weakness lies in your nervousness, and you may miss your goal because of your "over-intellectualization" that may be detrimental to other kind of energies such as instinct, spontaneity, heart, sensitivity, etc.

Jupiter, the planet of expansion, organization, power and benevolence, is quite emphasized in your chart. Like any Jupiterian, you are warm, open, sociable, consensual, active and optimistic. You can use your self-confidence to erase differences of opinion, and you leave the task of analyzing and perfecting things to specialists. Your role, and you know it since you were young, is to gather, to demonstrate your synthesizing and conciliatory mind, and to naturally reap its fruits - power.

You appreciate legality, social order but also order in general. With you as a leader, every plan or human entity can be organized and structured. You excel at supervising. The Jupiterian type is indeed the politician par excellence, and a positive Jupiter in your chart is synonymous with good integration into society, whatever the chosen path.

Is this idyllic picture really perfect? Certainly not: each planet's typology has its own weaknesses. One of yours is pride, like the Solarian, but your will of expansion at all costs may generate a form of exaggeration in everything, endless pleasure, inappropriate self-confidence that could lead you to rough materialism and the thirst for absurd material comfort - in the worst cases, of course.



In your natal chart, the three most important signs, delineated according to the above-mentioned criteria, are, in decreasing order of strength, Virgo, Leo and Cancer. They are often prominent because your Ascendant and your Sun are posited there. However, it is not always the case: it may be because they are occupied by a cluster of planets, by a planet near an angle other than the Midheaven and the Ascendant, or because two or three planets are very active and form numerous aspects from these signs. Therefore, you partly take on the three signs' characteristics, which are somehow superimposed on your natal chart, and all the more so if any of the signs in question is highlighted.

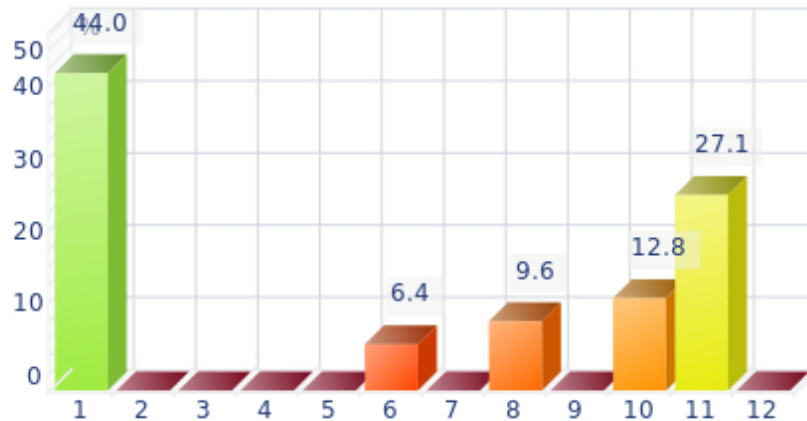
Virgo, associated with perfectionism, numbers and reason, is among your dominant signs: you inherit its sense of responsibility and tidiness, a clear mind, an unflinching logic, as well as a need to be useful and to fulfil your task to the best of your abilities. Obviously, people may think that you are too modest or reserved, suspicious or pessimistic because of your exceedingly critical mind, but aren't logic and wisdom great qualities? Of course, they are. Moreover, you keep your feet on the ground, you never behave irrationally and you are helpful and hardworking - what more can you ask for?!

With Leo as a dominant sign, you naturally shine brightly. Your dignity, your sense of honour, and your generosity can almost turn you into a solar mythological hero, a knight or a lord from the ancient times. People may blame you for your selfishness, your pride or your somewhat loud authority, but if you are self-confident, kind-hearted and strong-willed, it surely makes up for your little flaws, as long as they remain moderate...

Cancer is one of your dominant signs and endows you with imagination and exceptionally shrewd sensitivity. Although suspicious at first sight - and even at second...- as soon as you get familiar with

people and let them win your confidence, your golden heart eventually shows up, despite your discretion and your desire for security that make you return into your shell at the slightest alert! Actually, you are a poet and if you are sometimes blamed for your nostalgia and your laziness, it is because your intense inner life is at full throttle...

Your Dominant Houses



Houses 1, 11 and 10 are the most tenanted ones in your natal chart. To compute their strength, planets and angles are weighed according to various astrological criteria such as swiftness, activity, angularity, rulership etc. From the analysis of the most tenanted Houses, the Astrologer deduces the fields of activity that are most relevant to you, be it because of what you are experiencing, or what you may experience in the future, or because of your deep inner motivations.

With a dominant 1st house, your magnetism is powerful, and your individuality as well as your willpower are out of the ordinary. You are a determined, strong-willed, and assertive person, with this relative criterion at least.

It is likely that you never go unnoticed when you are in a crowd or in a reunion: an important 1st house suggests that you are a charismatic person with above average vital energy, especially if the Sun is present in this sector.

Your personal interests are always important and you never forget them, which doesn't mean that you are self-centered, but only that you behave according to what is in harmony with your deep nature!

The 11th house is among your dominant houses. Therefore, social life and friendships are very important, even strategic to you.

You think that group activities, whether in the humanitarian field or simple gatherings of friends, are endless sources of inspiration and of enjoyment, provided that there are no tensed aspects in this sector. Everything human is important to you, often more important than your own success, unless your 10th house is also powerful.

With a prominent 10th house, your destiny's achievement may be very notable: the 10th house represents your career, your public life, and your ambitions. A good deal of your energy may thus be used to successfully implement what you have in mind. Instinctively, you are very keen to make your dreams

come true. Sooner or later, you will deal with the public, and your personal achievement will go through trials and ordeals: other people and visible actions.

Your Style, Behaviour, and Peculiarities

What is commonly known as "sign" indicates the position of the Sun in the Zodiac. The Sun highlights all the characteristics of the sign he tenants. According to astrology traditional rules, these characteristics are all the more pure and exact when the Sun is strong in the sign, or when the sign is particularly highlighted within the chart. Here, we indicate the pure characteristics of the sign but you must bear in mind that they may only shed a light on a particular aspect of your personality. Indeed, the sole sign of the Sun, or of the Ascendant, can never describe an astrological chart because it depends on the degree of strength of the said sign in your chart.

Another important point must be underlined. Contrary to the Ascendant, which clearly describes your appearance, your vitality, your physical constitution, your spontaneous behaviour and the image you project, your Sun sign describes your inner self, which you may not completely be aware of, and which may emerge gradually as you mature: it is about your inner personality that you reveal only to the members of your entourage whom you trust. The Sun sign is likely to be the final form of your personality, once it has evolved in line with the energies of the other parts of your chart, the beginning of which is seen in the Ascendant, your external "bark".

The Ascendant is one of the major components of your natal chart. It is the zodiacal sign that rises in the East at the very moment of your birth. To calculate it, it is therefore necessary to know your exact time of birth.

It provides with a wealth of information on your personality. It is one of the key features that allows the analysis of several parts of you, such as your appearance, your character as it is initially perceived and your immediate behaviour. It describes the external aspect of your personality which you always display, but it also describes your physical constitution in the long-term, in other words, your health.

Please be aware that, in spite of the importance of the Ascendant, the accuracy of its description depends on how strongly highlighted it is in your natal chart. We use the entire set of astrological rules to assess the strength of the Ascendant. In most cases, the Ascendant is as revealing as your "sign", i.e., the sign where the Sun is posited at the time of birth.

You were born under the sign of Leo and your Ascendant is in Virgo

Before broaching the details of the meaning of your Sun and your Ascendant, as a preamble, we offer a brief generic interpretation of their combination in your chart:

The characteristic of this sign combination is the will to project an irreproachable self-image and to display humble and withdrawn manners. Your Leo Sun defines your inner self which is marked by the sense of honour, courage, and loyalty towards a person, an ideal, as well as to yourself. Owing to your Virgo Ascendant, when you meet people for the first time, you are cautious and reserved, as if you feared that opening up too much to the outer world might upset the balance of your life. You are fault-finding, and your eagle eye immediately spots the flaws in lines of reasoning or in people. With your analytical and provident mind, you come across as a very serious person at first glance. However, when people get to know you better, they understand that your Leo Sun is ready to roar, and they discover your daring and easy-going nature tinged with aristocracy. You lack diplomacy because neither Leo nor Virgo show

leniency with human weaknesses. These two signs have in common perfectionism and incorruptibility.

You were born with the Sun in Leo

Psychologically speaking, your nature is powerful and self-assured. You are a leader whose strength and nobleness naturally arouse your entourage's respect and adherence and your legitimacy is unquestioned. Your sense of commandment, the honour your person constantly exudes, your prestige and your charisma is a whole which puts you into the spotlight wherever you go.

As you are born under this sign, you are proud, determined, wilful, loyal, solemn, generous, ambitious, courageous, heroic, full of vitality, creative, confident, seductive, happy, daring, proud, majestic, honest, magnanimous, charismatic, responsible, noble, brilliant, radiant, dramatic, affectionate, full of humour, demonstrative, swaggering and self-confident. You can also be domineering, conceited, touchy, authoritarian, stubborn, intolerant, self-centered, irascible, violent, and nonchalant.

In love, Sir, you are very demanding. You are a powerful and loyal lover. Your partner must be the most beautiful and the most brilliant person and she must make you feel that she admires you. In such a case, your generosity has no limit and you give your love without reservation, with nobleness, liberalities and luxury. You set up a stable and brilliant home where children have the essential part.

The main danger is that you value trust to the extent that you grant it generously but too hastily: if you happen to find out that your trust is misplaced, the whole world around you crumbles and the relationship is forever damaged. In this regard, you are cut-and-dried and you feel so hurt and humiliated that you seldom can forgive.

Another similar danger comes from the fact that your expectations are very high and it is very unlikely that real life offers such unconditional and lasting love: for this reason, it is not unusual that you never marry, all the more so because your self-centered character is not prone to self-questioning...

Your Ascendant is in Virgo

Psychologically speaking, your nature is nervous and secondary. Before you take action, you cautiously ponder over things and you review any possible alternative and reaction. You strive systematically to find the best possible response to any given problem. You are a perfectionist above all and you have no rest until you optimize a situation, in each and every area, be it professional, pragmatic, aesthetic or in pleasure. You do not accept spontaneity and, to fully enjoy life and go further, you consider that demanding the best is the least you can do, even though it is detrimental to the rough force associated with your instinct. The intellectual element intervenes before both the physical ones and your feelings: it is one of the essential clues to understanding your personality.

As you are born under this sign, you are cerebral, clear-sighted, focused on details and on numbers, analytic, serious, competent, reasonable, modest, tidy, organized, spruce, industrious, provident, honest, loyal, reserved, shy, helpful, willing to progress, talkative, perfectionist, logical, hardworking, tactful, patient, precise, concrete, spiritual. You can also be narrow-minded, calculating, irritating, petty, picky, hung up, anxious, cold, repressed or sarcastic.

In love, Sir, your inner self is different from what you seem to be: you are sensual and affectionate and you find it hard to show it because your nature is to be cautious, reserved and analytical. You think too

much, which gives you a cold and distant look. However, it is a mask that you wear and take around with you. As soon as you feel in confidence, you become able to take off the mask and to reveal your true face. You are critical and perfectionist and you must be cautious enough to keep your comments to yourself, especially in this particular area.

In the fields of sex and affection, real confidence is an imperative pre-requisite. Otherwise, it is impossible for you to show your true self and to remove the mental screen that proves so efficient in other areas, but that is very burdensome and inhibiting in the private sphere.

When you manage to do so, you become a charming, sensual and endearing partner and you communicate easily thanks to Mercury who rules your sign.

You are loyal, organized, conformist, more suited for celibacy. But once you take your decision, you are quiet and tidy and you will bring up your children according to the best traditional principles.

Because Virgo is a dual sign, there may be two marriages, or there may be a love affair in parallel.

The ruler of your chart is in Leo

The ruler of the Ascendant, also referred to as the chart ruler, brings a few interesting nuances to the meanings provided by the Sun and the Ascendant. The sign in which the ruler of the Ascendant is posited fine-tunes the style of personality described by the Sun and the Ascendant. It may strengthen it if the sign is identical to either of them.

The ruler of your Ascendant is in the same sign as your Sun. This specific feature means that the Sun's characteristics in sign previously delineated are strengthened.

Aspects to your Ascendant

Several planets form an aspect with your Ascendant, Guy de Maupassant. Therefore, in their specific way, they modify your behaviour and your personality, which do not take on the pure characteristics of your Virgo Ascendant only, but which are a blend of its characteristics with those of the said aspects.

★★★★★ Mars conjunction Ascendant, orb 0° 2'

The conjunction of Mars with the Ascendant is the mark of an exceptional energy, Guy de Maupassant! You have a natural taste for action, and your audacity often works wonders. With such a great vitality, you are sometimes inclined to appreciate sports. Should it not be the case, then, your decision-making capacity in society, as well as your entrepreneurial skills, remain strong assets throughout your life.

★★★★☆ Venus conjunction Ascendant, orb 2° 55'

Owing to this conjunction of Venus with your Ascendant, your natural charm may wreak havoc, Guy de Maupassant. You tend to see the pleasant side of things, and this natural laid-back attitude is undeniably appreciated. Your cheerful behaviour favours the instinctive and positive rapport you establish with other people.

★★★★☆ Jupiter conjunction Ascendant, orb 4° 22'

Jupiter, the planet of good luck, law, and benevolence, is in conjunction with your Ascendant, Guy de Maupassant. This endows you with an undeniable natural vitality, a composed, honest, affable, not to

say pleasant side. You tend to see the good aspects of things and to honour your commitments. This is what causes other people to often notice your reassuring and nice behaviour: quite an asset in life!

★★★★★ Moon quintile Ascendant, orb 0'

Your instinct seldom misleads you, as far as your external appearance is concerned, thanks to the Moon's soft aspect with your Ascendant, Guy de Maupassant. You keep your emotions under rather good control, in instinctive and smooth ways.

★★★★★ Mercury semi-sextile Ascendant, orb 0° 33'

You are endowed with quite good adaptation capacities, Guy de Maupassant. Thanks to Mercury, your behaviour matches your intellectual concepts, or your style of communication, which is quite an effortless one.

★☆☆☆☆ Saturn inconjunction Ascendant, orb -2° 46'

This hard aspect between Saturn and your Ascendant may bring about a lack of self-confidence and some inhibitions in your behaviour, in people's eyes, Guy de Maupassant. Therefore, you must have trust in yourself and you must not be taken away into the spiral of doubts with its usual consequences, which are to hide away, or on the contrary and as a compensation, to overdo. Please, keep in mind that all this is highly subjective, and that in most cases, if you fully understand it, you can gradually overcome this slight restraint, and even turn it into strength. This is how you can keep your self-esteem and transform your prudence into... an asset.

Your Sensitivity

Affectivity and intuition are very developed, Guy de Maupassant, and you are very sensitive to your environment. You “feel” atmospheres, moods and other people's emotions and when you capture negative influences, a feeling of ill-being immediately overwhelms you, all the more so because your lively imagination may destabilize you as it amplifies your receptiveness. Your nature is anxious and you tend to worry for your entourage. You strive to offer them a reassuring family atmosphere, the much needed comforting and warm sort of cocoon where you can laze around, at will. Because you care so much for your family, they may think that you are intrusive and that you try to rule their life through subtle affective blackmail. Trust them... and also learn to have more confidence in yourself!

Your career or professional achievements, Guy de Maupassant, are fields where your emotions will be more easily channelled. You are often popular, especially with women, and you instinctively have the desire to please audiences or crowds.

Your fame is often due to your changeable side, light-hearted, emotional and moody sometimes. It also means that it is very likely that you experience professional changes several times during your life. Each time, you will contrive to be the star, in your way...

★★★★★ Moon trine Neptune, orb -0° 02'

This harmonious Moon-Neptune aspect indicates an exceptional receptivity. You are sensitive to ambiances and you can grasp what is at stake in any given situation. You can pick up things in the general atmosphere that the majority of people miss out. Your deep intuition allows you to feel the subtlest details, that « little nothing » which is the key to behavioural patterns. Inspiration is your guide and imagination accompanies your daily rhythms. Mysteries, psychology, esoterism, fantasy, the supernatural... one of these fields, at least, is of concern to you. You pay utmost attention to your inner life, to moments of tranquillity when you relax, when you allow your mind to wander at will. The danger is that you may seek refuge in the imaginary and that you shirk reality.

★★★★★ Moon quintile Mars, orb 0° 2'

Your vivid imagination goes hand in hand with you desire to make your dream come true and to struggle, so as to remain true to yourself. You easily mobilize your energy and your resources. This harmonic Moon-Mars aspect indicates the will to keep your intimate balance under all circumstances. You thrive in action; you court danger, particularly when your regular environment is endangered. In the private sphere, you exhibit complete straightforwardness. This planetary configuration allows you to quickly get back on your feet within a new context. You adapt well to unprecedented situations. Your capacity to integrate events rapidly can only increase your adaptation abilities.

★★★★★ Moon sextile Uranus, orb 5° 54'

This harmonious Moon-Uranus aspect indicates that your well being depends on the original quality of your charm and on new-ness. You are not influenced by prevailing trends and fashion. You have a personal view of what a balancing private life should be. You enjoy unexpected situations, even extravagant ones. But if you feel that your living environment hampers your freedom, you suddenly change your attitudes and your habits. Independence is your true realm. You may show an exceptional inflexibility when your intimate life moves away from the patterns you need, deep down. Your entourage must get used to your demands and to the values you are determined to keep with all your might and on which you are uncompromising. This determination does not allow for a laid-back attitude, or an indolence that so often causes degradations. You keep your own daily rhythms under control.

★★★★★ Moon sextile Pluto, orb 6° 22'

You are a riddle for people... and for yourself. This harmonious Moon-Pluto aspect arouses your desire to understand and to express elements hidden in your unconsciousness. You are interested in the occult, in laws that rule beings and things in the dark. You like to pull strings and to manipulate situations without people's knowledge in order to remain mysterious. You feel fine when you are not in the limelight, but you intervene in the dark, with subtlety. Your intimate behaviour reveals the distance that you strive to keep in order to protect your inner life. You gladly cultivate the angel of the bizarre, even in your life habits and in your daily rhythms.

Your Affectivity

In your chart, the Sun is in Leo, and Venus, in Virgo. Leo is in love with love, anxious to shine and to be up to any promising situation. On the other hand, Virgo is more anxious to organize her realm than to expand her territory; she needs to control the elements at her disposal rather than to enlarge her sphere of activity. These contradictions are probably reflected in your affective behaviours: whereas your ambitions and your models bring about an offensive mind and you are absorbed in your intense thirst for domination, your desires and your natural tendencies are more balanced and reserved. Therefore, the image you project may conceal your true nature, which is sentimental, sensitive, modest and vulnerable. It is part of your charm but it is also your Achilles' heel: *quid pro quos* may come from the image you strive to give of yourself because, inevitably, it is distorted by your will to unreasonably show off. Your natural dignity (commendable as long as it is not exaggerate) is much to your credit, but it may also be the source of misunderstandings. Does the person who loves you know your affective aspirations? Mutual trust is one of the fundamental keys to your fulfilment. When passion and wisdom get along well, you become able to give of your best.

Guy de Maupassant, inside yourself, feelings are strong and powerful. However, you never show them before weighing up and considering all the possible consequences of your words and your actions: fieriness and spontaneusness are toned down because you cannot help controlling yourself, probably due to your modesty, your discretion or your shyness; you are frightened because you are so concerned with other people's opinion that you see passion, or expressing your feelings too quickly, as sources of danger. However, you are helpful, simple, and you do not fuss around. Reason prevails in your love life but your heart may flare up when the context is well organized and everyday life is cautiously handled with good sense, tidiness and cleanliness. Your sensitivity prompts you to avoid excesses and outbursts and this is how you think that you can achieve happiness without risk.

Guy de Maupassant, Venus in the 1st house (also called Ascendant) represents your behaviour or your character, as seen by others. This position contributes to soften your personality and to bring a natural charm and an easygoing quality. It gives you a sparkling, attractive and sexy side: not only do you easily express your feelings in a seductive and affectionate way, but they are also an integral part of your vision and the image you project. You want to please, you have a taste for beauty, even luxury, arts, music, you especially look for harmony in everything and diplomacy is one of your most renowned qualities. Therefore, you are lucky in the sentimental sphere, you establish links easily and you can expect to have long-lasting relations. Since you happily express your feelings, it's only right that you reap what you sow. There is no gap between your behaviour and your feelings, which endows you with exceptional assets for seduction.

★★★★★ Venus conjunction Jupiter, orb 1° 27'

Charm and seduction are your assets. This harmonious Venus-Jupiter aspect favours your affective fulfilment and your sentimental well being. You earn your entourage's sympathy thanks to your conciliating sensitivity, your desire to please and your behaviour in society. In many circumstances, you arouse esteem and consideration – essential values to you. You like social whirls, life in society, the aesthetics and the arts. You often tend to look for the easy way out in your business and your affective relationships. You are known as a complacent person. However, your amorous commitments may be quite superficial. It is important that, without breaking the spell, you opt for a more genuine attitude, respectful of your essential desires. As we all know it, love cannot be bought. An indication of balance: because you are aware that compromises are necessary for a love affair to endure, better than anyone else, you know how to maintain harmony in love.

★★★★★ Venus conjunction Mars, orb 2° 34'

With this aspect, innate affective behaviours prevail over opportunisms and calculations. You do not cheat with feelings and you prefer to be guided by your likes ... or your dislikes. Love is neither to be reasoned upon nor to be explained. It is important to experience one's passions spontaneously and to give free rein to the heart's tumultuous manifestations as well as to the body's demands. In other words, to be one's true self in the "now". You need to live intensely, to try all kinds of situations, sometimes to get hurt. Your sensitivity is the driving force behind your decisions and your actions. Real experiences are worth the best intellectual concepts. Spurred by your thirst for emotions, you try to build your life on bases that match your desires. Here, the trap may be that you pay too much attention to your moods and affects. But without them, life would be so dull. Even though emotionalism betrays you occasionally, it remains your best ally.

★★★☆☆ Venus inconjunction Saturn, orb 0° 08'

This Venus-Saturn dissonance indicates a demanding, complex and often challenged affectivity. You are wondering about the meanings of love, pleasure and emotions. Your passions take an absolute character right away. No compromise, no sham must stain your sentimental life. In such a context, doubts abound. This aspect prompts you to review the roots of your affectivity, so as to find the assurance you lack and to soothe your dormant sentimental anxiety. Love is an eternal and endless quest. Because you are doubtful of the affection people have for you, you may never feel that you are really loved. Your affective behaviour reveals your uncertainties: tests and challenges follow one another until, eventually, you are certain to experience a love that meets your demands. It is obvious that on the sentimental area, you are not looking for the easy way out.

The Way You Take Action and Your Sexuality

Guy de Maupassant, you skilfully make use of your energy and you are like the arrow that reaches its target with great precision: with piercing eye and sharp mind, you take action meticulously and efficiently. Like the surgeon with his scalpel, you know exactly what you want and you belong to the category of specialists, not the generalists. Critical, pernickety, extremely organized, you want to foresee and to analyze. You prefer to master your business too well rather than not enough, even if you must put a huge, sustained, long lasting effort into it. Sexually, you remain fanatical about cleanliness. You may be prone to fantasies such as fetishism. Your love life is fine if you avoid the unforeseen events that you loathe.

You are by nature an active person, Guy de Maupassant. This is the only position that does not give a particular orientation towards any specific area of life. It is the most powerful placement and it indicates that your personality is precisely combative, conquering and action-oriented.

You are on the move, with the impetus which urges you, more than anyone else, to transcribe your thoughts and your projects into the real world.

The danger may be that you overdo and you turn into a warrior! This generous flow of energy is an invaluable asset that you use properly as you mature. The danger is also that you may come across as quarrelsome and too domineering to persons who may be scared by your punch and your pugnacity.

★★★★★ Mars conjunction Jupiter, orb 4° 01'

Coordinated action wins over almost all obstacles! You mobilize your energy and your fighting spirit advisedly and you take timely action. This is the reason why you are efficient in situations requiring courage, determination, swift responses and diplomacy, altogether. You do not fear confrontations but you never provoke them unnecessarily. You take advantage of your chances and you adjust your behaviour to concrete situations. You empirically handle events with relevance. The only danger is that you may be overzealous to seize any opportunity... even those that are not necessarily good in the long run. You should take the time to carefully consider the facts and their consequences. The swiftness of your reactions must remain an asset.

★☆☆☆☆ Mars inconjunction Saturn, orb -2° 25'

Why should you take action? And how? The surrounding world is not to be trusted. Past events have taught you to question simple situations and to intervene after thorough consideration. You are vulnerable to the traps of life, to confrontations and struggles. You may complicate your behaviour at will, often missing your target due to your self-censoring. Your interventions may lack spontaneity. You must overcome your doubts and acquire the certainty that you are able to handle realities and facts. If you make that effort, you can understand that there are many ways to make life simpler for yourself.

Your Intellect and Your Communication Style

Your intellectual and nervous energy is considerable, Guy de Maupassant, with good concentration abilities and a strong determination. You have plenty of planning and organization skills and enthusiasm. Your helpfulness is deep and you never hesitate to solve other people's problems. You are thought of as a reliable person and you enjoy it very much. You believe in your own capacities and you tend to speak with a dramatic pomposity because you want to attract attention. People who do not share your opinion are in trouble! Your determination is strongest and you may show stubbornness and inflexibility because you do not easily accept it when your ideas or your actions are criticized. Some people believe that you assert yourself in an authoritarian and condescending way, but you are not aware of it and therefore, you keep on thinking that you are right.

You are intelligent and brilliant as soon as you have identified a goal and you have partners to work with you. You are less inclined to undertake strictly personal projects, Guy de Maupassant. Your mind and your curiosity include friends and collective projects. You believe that your particularly well-developed sociability is an asset for them.

Collective works, customers and public domain appeal to you, and you feel that you can achieve in those fields. Your negotiating skills are paradoxically stronger when you face the anonymity of a group rather than in intimate individual exchanges, may be only because you have no real interest in your own projects, for several reasons.

★★★★★ Sun conjunction Mercury, orb 5° 1'

You know how to play with your image, how to give multiple representations of yourself. A precious asset: you are sensitive to other people's opinion and you adapt yourself to the audience. Of course, there is a "show" side in your manner that may prevent perfect cohesion. But that's the other side of the coin, for an extraordinary capacity to discover. This aspect translates into an acute sense of observation, an intense desire to learn and to bring everything to light. You strive to be informed in many circumstances, to understand the machinery of the world surrounding you, particularly regarding all human topics. And you will change according to that information and the knowledge gained. You have the chameleon's adaptation powers. And its vulnerability, as well.

★★★★★ Mercury trine Saturn, orb -3° 2'

Your vision of the world is rigorous and objective. An exemplary logic characterizes your mental attitude and your human relations. Your discerning faculties overlook no detail. You need to know the whys of your life and to explore the backstage of your surrounding world. The deepness of your relations dismisses superficial connections. It may be the reason why your interest is aroused when you are in touch with elements that are alien to your mode of functioning. You have the soul of a researcher, regardless of the form that your investigations may take. It may be an exacerbated curiosity for human topics or a will to understand relationship stakes. It may also be a hobby or a course of study that introduces you to a riddle. It does not matter! Life is a perpetual quest for the unknown. Your critical mind is highly developed and you take commonplaces for granted only after thorough consideration.

★★★★★ Mercury semi-sextile Mars, orb 0° 54'

The harmonic Mercury-Mars aspect is the signature of a quick wit and an energetic character. You take decisions rapidly and you implement them straight away. You never accept stiff situations. You need to design, to take action, to fight to express your acute sense of relation: the world, the people, everything is of concern to you... You need to be involved in relationships and in dialogues. Your sharp retorts earn you a reputation of straightforwardness. On the relations' area, your quick wit and your mobility are greatly appreciated. You find the allies and partners you need at the right time. An art of resourcefulness that is precious...

Your Goals, Motivations, Career, and Destiny

Your Sun is posited in the 11th House

You definitely are a good soul, Guy de Maupassant: above all, you like to assert yourself by means of friendship, the true one, that is deep and warm; nothing is more rewarding than to be accepted and loved by your friends and by the persons you select.

Collective activities are the source of great satisfactions and it is through contacts and regular acquaintance with your colleagues that you are able to give of your best: your sincere desire to forge strong friendship bonds while implementing your activities, (not necessarily of a professional nature),

contributes to positively increase your charisma and even, to make you stand out prominently as a person at the same time benevolent and unselfish.

People are not reluctant to offer their valuable help. They are not fearful because they feel that you are a person who is not looking for any kind of power or domination but who only wants to earn their sympathy without reservation.

Supports and protections from higher-ups are repeatedly granted to you, and not in parsimonious ways. They help you to successfully implement your different projects, preferably within an affectionate and warm entourage; indeed, isolation does not suit you because you would feel that your efforts serve no purpose; your need for recognition and your thirst for warmth are very strong and you cannot spend too much time striving in solitude.

You are idealistic and very sociable. Teamwork, participation in humanitarian and artistic projects or works of public interest, are perfectly suitable.

Rivalries and squabbles may affect friendly relationships that you thought to be so steady and strong: it is obvious that it is impossible to make everyone happy. In such occasions, don't get into a terrible state about it. Your nature is so loving, simple and pleasant that you will quickly find elsewhere more loyal and reliable friends who will make you forget your few disappointments.

The ruler of your chart is in the 11th House

The ruler of the Ascendant, also referred to as the chart ruler as explained in a previous chapter, is also posited in one of the twelve Houses of the chart. Just like the Sun in his House, the ruler of the Ascendant provides certain abilities, or it makes you appreciate more keenly certain areas of life.

The ruler of your Ascendant is in the same House as your Sun. This specific feature of your chart strengthens the Sun's characteristics previously delineated.

Aspects influencing your ambitions

Regarding your destiny or your career, the following aspects of your natal chart allow to fine-tune what has just been said above:

★★★★★ Mars square Midheaven, orb 3° 39'

Because Mars is in dissonance with your Midheaven, in some circumstances, you may feel misunderstood, Guy de Maupassant. In society, you may even feel hostility towards you as you try to climb up the steps of your professional life, or when you strive to reach a higher social status. Your efforts may be resented. You must be twice as careful as you usually are and tone down your behaviour in order not to be rude to other people, even though from your viewpoint, and it is actually most often the case, it only has to do with misunderstandings or some eagerness on your part.

★★★★★ Sun sextile Midheaven, orb -2° 25'

In the professional and social status areas, Guy de Maupassant, you know what you want, and you know how to cleverly obtain it. Because the Sun and your Midheaven are in agreement in your natal chart, you have no qualms and no hesitations when it comes to defining the strategy for reaching your goal.

★★★★★ Mercury sextile Midheaven, orb 2° 45'

Mercury in soft aspect to your Midheaven enables you to easily communicate with your entourage and to climb up the social ladder, Guy de Maupassant. Your strategy is often good, and you correctly think about your interests. Do not change anything!

★★★★★ Pluto semi-square Midheaven, orb 0° 02'

Owing to this dissonance of Pluto with your Midheaven, Guy de Maupassant, you may experience brutal changes in your professional or your living conditions. These upheavals are imposed on you by fate, and they sometimes take on a mysterious nature. Although you do not always understand the cause behind them, you must accept these changes as they occur, in order to bounce back in a different path, or just elsewhere.

★★★★★ Uranus semi-square Midheaven, orb -0° 24'

Uranus is in hard aspect with your Midheaven, Guy de Maupassant. There is definitely nothing serious to worry about. There may be a lack of perseverance in the efforts you put in order to move forward in your career or your social destiny. When unexpected hurdles crop up, more than anyone else, you must accept the unavoidable changes without losing sight of your aims, and above all, without getting disheartened. More than anyone, you must learn to accept the values of time and duration, if you are to reap their fruits.

★★★★★ Venus square Midheaven, orb 6° 13'

Venus is in slight dissonance with your Midheaven, Guy de Maupassant. There is nothing really serious with this type of configuration, except that in some circumstances, you feel that your natural kindness is not acknowledged rapidly enough, or that it is not as appreciated as it should. It may happen that a female, or the fair sex in general, does not correctly understand you, or that she acts against your interests. There are usually no negative consequences since Venus is not a "harsh" planet. It is up to you to put in the effort to better show your sincerity and to avoid any misunderstanding.

★★★★★ Jupiter inconjunction Saturn, orb 1° 35'

Jupiter and Saturn form a dissonance in your natal chart. It is far from being horrendous. This planetary configuration, which is deemed somewhere between the individual and collective characteristics, only indicates that your social integration may be delayed, or may encounter a few difficulties. Such slight delays or setbacks often have their origins in your own behaviour. Indeed, since Jupiter represents laws and public life, and Saturn, seriousness and perseverance, in many instances, you may become impatient, or even rebellious to any form of authority or legal constraints, to the extent that you cross the white line... When you face such circumstances, you must resign yourself to listening to reason and accept to wait for your turn, lest... your achievements are even more slowed down by your own haste.

★★★★★ Jupiter square Midheaven, orb 7° 41'

Jupiter, the planet of law and social achievement, is in mild dissonance with your Midheaven, Guy de Maupassant. You may experience difficulties in climbing up the steps of your social status, or in having your true worth fully recognised. There is definitely nothing serious to worry about. It is up to you to remain self-confident and not to be too impatient. With effort and perseverance, you can reach serenely the goals you have set for yourself. The only mistake you must avoid with this configuration is to jump the gun and to forget hierarchy and laws, or just to underestimate the work you must put in to that end.

★★★★★ Saturn sextile Midheaven, orb -6° 05'

Thanks to this soft aspect between Saturn and your Midheaven, your long-term efforts and your perseverance are rewarded, and you gradually climb up the stairs of success. Time is your ally as far as your career and social destiny are concerned. Carry on the good work, and rest assured that your seriousness and your obstinacy are appreciated. They are instrumental in your success, especially during the second part of your life.

★★★★★ Sun trine Saturn, orb -8° 31'

This aspect indicates a firm and discreet will, a rigorous and objective character. You are clear-sighted, particularly in difficult situations. You enjoy the moments of calm and solitude during which you can review your life at will. Your judgments are enduring and often extremist. You are outraged by injustice and inconsistency. When a problem arises, you do not take the easy way out with short-term solutions, on the contrary, you strive to solve the issue thoroughly. Better than anyone else, you challenge yourself, you review your choices and your attitudes. This is the reason why you are capable of handling crises and of overcoming any obstacle that requires an in-depth and relevant response. You may lack spontaneity but your behaviour reveals your wisdom. When you are facing an issue, you put forward the good question, to others, but also to yourself.

Your Assets and Your Part of Joviality

The major asset of the planet of Greater Fortune in your chart, Guy de Maupassant, is the increase of your practical sense and of your capacity to create order in your surroundings. You progress easily in your activities and, in most cases, you are efficient, useful and cautious. The danger may be that you do not put yourself in the forefront to reap the rewards of your efforts, especially if the rest of your chart indicates a tendency for introversion or a lack of self-confidence.

Guy de Maupassant, Nature gives you a nudge in the right direction and endows you with enthusiasm and generosity, contributing to your charm and dynamism. You are attractive, and you hold sway over groups. Your physical appearance is that of a jovial and charismatic person.

The planet Jupiter symbolizes expansion, broadness and generosity. Jupiter is associated with the functions of synthesis, enthusiasm and optimism. In your natal chart, his house position is more important than his sign position because, like Saturn, Uranus, Neptune and Pluto, he is a slow planet. Many people born in the same period have Jupiter in the same sign. This is the reason why the sign occupied here is less meaningful than when it is occupied by the so-called fast planets, i.e. the Sun, the Moon, Mercury, Venus and Mars. Therefore, some caution is to be exercised as you read what follows.

Jupiter in Virgo gives you a talent for work, for practical activities and a higher than average dexterity. You have a strong sense of duty. You are very appreciated in your work environment because you are a perfectionist. The Tradition underlines that all the fields related to health and physical wellbeing are favoured.

Your Serious Side

Your natural fieriness and your impulsiveness are slowed down and well-controlled. You gain in stability, tolerance, and stamina what you lose in spontaneity, competitiveness, and freshness.

Sooner or later, death and its environment – inheritances, successions, investments, sorrows, or detachment – are areas you will have to deal with, not necessarily in a negative way, Guy de Maupassant. Besides, the Tradition believes that this configuration gives longevity, if other aspects do not strongly state otherwise.

In the affective and sexual spheres, you do not easily grant your confidence, and you need to work on your inhibitions so as to overcome your own fears. Provided you display a strong will, Saturn, as the planet of time, allows you to consider these areas with grace. They become sources of pleasure and joy, under the condition that... you put aside your serious side, precisely. This is likely to occur after your first experiences have taken place.

The planet Saturn symbolizes contraction, effort, time, limitation and concentration. Saturn eliminates anything that is not authentic, sooner or later. It is impossible to cheat him as he gives an irresistible desire to form a coherent whole with oneself, in responsible and wise ways. He is the great purifier. He represents our limitations but also our truth. In your natal chart, the house position where Saturn is posited is more important than his sign position because, like Jupiter, Uranus, Neptune and Pluto, he is a slow planet. Many people born in the same period have Saturn in the same sign. This is the reason why the sign occupied here is less meaningful than when it is occupied by the so-called fast planets, i.e. the Sun, the Moon, Mercury, Venus and Mars. Therefore, some caution is to be exercised as you read what follows.

Saturn in Aries decreases your impulsiveness, your primary-ness and your spontaneity. But it endows you with more patience, tolerance and reflection in the long run.

A Few Special Points

Your Uniqueness and Your Utopias

Unexpected events and surprises often occur in quite special areas: finance connected to investments, to inheritances and, more generally, to external possessions or losses (taxes, stock exchange, other people's money), to the fields of occultism and death and, more symbolically, to sexuality.

In general, in one of these fields, you are likely to experience one or several reversals of situation (positive or not), on the material plane but also, as a consequence, in your approach to life and the way you transform your personality in depth.

In any case, you are predisposed to risk-taking, as if some inner force prompted you to create maximal psychical tension, or to challenge yourself in order to know yourself better, or to explore the unknown in a constantly deepening manner.

Your Inspiration and Your Illusions

Your approach to daily life and your behaviour in your work environment are whimsical and abide by one single law: your mood or your feelings of the moment!

Although it may be detrimental to your own organization, it also endows you with qualities such as being easy-going, helpful, and ready to give assistance to those whom you perceive as nice persons.

Your health is quite fragile and, if the emotional sphere is unsatisfactory, you may transfer your moods to the physical plane and, for instance, you may be affected by allergies or problems difficult to identify.

Your Passion and Your Authority

In the sexuality area, you are very creative and you fear nothing. You are willing to experience your fantasies to the very end because you need to understand life's most secretive and mysterious aspects.

You are usually interested in occultism and in all topics that go beyond the everyday life framework: death and after-death, parapsychical researches, etc. You have a strong sixth sense and you intuitively understand at once things that are usually hidden and private.

Your material life may be disrupted by inheritances and gains stemming from happy speculations. In the most negative cases, you undergo huge losses that are difficult to understand. In all cases, these upheavals are meant to transform your personality and your approach to life.

Your Isolated Planets

In general, the ten planets of the chart are connected to other planets by major or minor astrological aspects. It is owing to those ties that the planets' energies can manifest in the chart owner's personality and play out within safeguards according to a specific tonality.

It seldom happens that in a natal chart, a planet is totally disconnected from the nine other planets.

Astrologers have observed that when such a case occurs, the person feels the energy of the unaspected planet in quite a singular way, very jerky and powerful at the same time. Thus, for instance, the famed astrologer Jean-Baptiste Morin de Villefranche wrote that "an unaspected planet heralds that something strange or extraordinary will take place regarding the meanings of the house in which the said planet is posited" (source : l'astrologie selon Morin).

Rules for detecting an unaspected planet: among all the testimonies that we have reviewed to this day, based on our experience, we tend to agree with American astrologer Janis Huntley who accepts seven aspects, which involve the zodiacal twelve sections of 30 degrees. The aspects to be considered are the conjunction (0 degree, cooperation or tension), the semi-sextile (30 degrees), the sextile and the trine (60 and 120 degrees respectively, aspects of cooperation), the square and the opposition (90 and 180 degrees respectively, tensed aspects), and the quincunx (150 degrees, slightly tensed). In this detection, the chart's angles are not taken into account.

In any case, it is important to remember that an isolated planet clearly expresses its influence when it is a personal planet. Thus, when the Sun, the Moon, Mercury, Venus, or Mars is isolated, it is certain that the effects described by Jean-Baptiste Morin de Villefranche will become manifest. As for Jupiter, Saturn, Uranus, Neptune, and Pluto, one must be cautious because the volume of cases documented is not yet large enough.

Your chart has no isolated planet, and this particular case does not apply to you.

Annex 1: Your Minor Dominants

The five following dominants are less significant than those described at the beginning of your report. They may not be strongly felt. In some cases, they add several minor details to the analysis of your character, but they are rather for curiosity purposes. It is not necessary to take them into account when you first read your portrait.

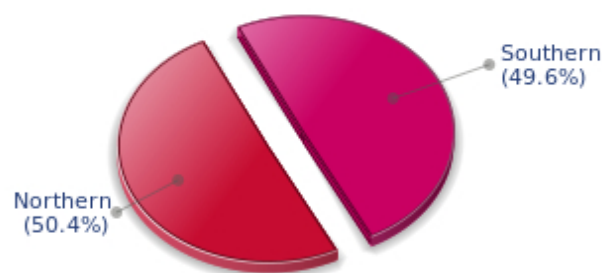
Your Planetary Repartitions: Northern, Southern, Eastern and Western Hemispheres

The axis linking the 1st house's cuspide (the Ascendant) to the 7th house's cuspide - the Descendant - divides the zodiac into two bowls, a superior bowl, in the South, and an inferior bowl in the North. Quoting an expression by the famous American astrologer Rudhyar, the Southern part and the Northern part correspond to two functions: "being" and "doing". Other concepts are also associated with this North and South distribution, such as introversion - Northern hemisphere - and extraversion - Southern hemisphere - being or appearances, inner life or external life, reflection or action, dreaming one's life or living one's dreams, the abstract or the concrete, backstage or limelight.

This is not about determination but about personal inclination: thus, some people will be thrown into public life despite a prominent Northern hemisphere. If this happens, however, it will not be due to their will, their taste or their deep nature. Conversely, a prominent Southern hemisphere will not bring about a famous destiny to its owner, even if he tends to turn the spotlight on himself, or if he looks for a more active life. It is a matter of deep nature and natural inclination. Of course, none of the typologies is "superior" to another.

In your birth chart, Guy de Maupassant, the ten main planets are distributed as follows:

Your Northern and Southern Hemispheres



Guy de Maupassant, the planetary elements of your chart are well balanced between the North and South hemispheres. As a result, your public destiny and your inner life are harmonious, and there is no conflict between your actions and your thoughts. Your private and public spheres coexist in harmony and naturally match your temperament.

The birth chart is divided into two other parts, Eastern and Western, by the axis linking the Midheaven to the Imum Coeli.

The Eastern part, on the Ascendant side, shows the person's ego, will, magnetism, and vitality, whereas the Western part, on the Descendant side, symbolizes other people, communication, relationships and their influence, as well as flexibility and adaptability.

Guy de Maupassant, here is the planetary repartition in your Eastern and your Western hemispheres:

Your Eastern and Western Hemisphere:



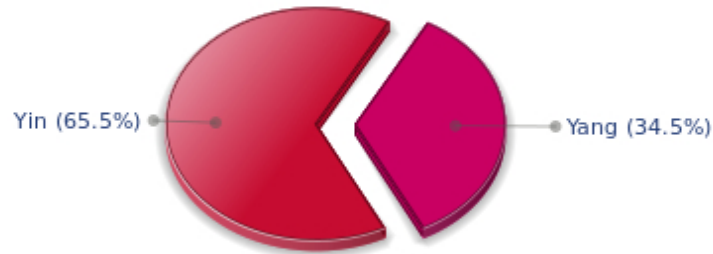
The predominance of planets in the Eastern hemisphere of your chart enables you, Guy de Maupassant, to assert yourself and to rely on your determination: you know what you want and you have a tendency to take action and to decide with your personal goals as priorities, even if they can be in contradiction with what others think.

A definite asset... provided that you never make mistakes in your choices. You should pay more attention to your entourage in order to counterbalance your nature and to take advantage of your assets wisely. The danger is that you may be too authoritarian and not conciliating enough. Strong determination coupled with flexibility and acute sense of communication are qualities you should develop.

Your Yin and Yang Polarity

The twelve signs are divided into two polarities, called active or passive, or sometimes masculine and feminine, positive and negative, Yang and Yin. This classification corresponds to two quite distinct tonalities, the first one bringing extraversion, action, self-confidence and dynamism, the second one, introversion, reactivity, reflection and caution. None is superior to the other, each group has its own assets and shortcomings. Odd signs - Aries, Gemini, Leo, Libra, Sagittarius and Aquarius - belong to the first group, whereas even signs - Taurus, Cancer, Virgo, Scorpio, Capricorn and Pisces - belong to the second group.

Your Yin and Yang Polarity



According to the disposition and qualities of your planets and angles, you are rather influenced by Yin energy, the passive polarity, Guy de Maupassant: you are quite introverted, imaginative and sometimes discreet, but you are a deep and wise person who is not content with just noisy and flashy things. At times, you doubt but you think that those who don't are a bit... thoughtless. Allow yourself to take more laid-back attitudes and put your reserve aside, because good equilibrium is always healthier.

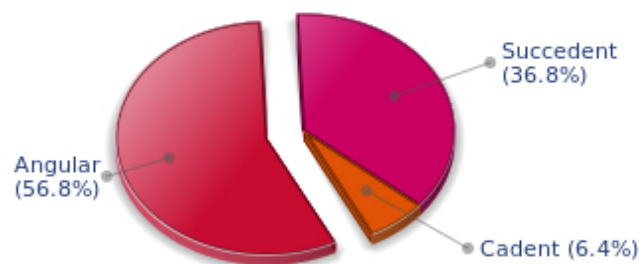
Your Houses' Accentuations

Houses are split up into three groups: angular, succedent and cadent.

The first ones are the most important ones, the most "noticeable" and energetic houses. They are the 1st, 4th, 7th and 10th houses. Their cusps correspond to four famous angles: Ascendant for the 1st house, Imum Coeli for the 4th house, Descendant, opposite the Ascendant, for the 7th house and Midheaven for the 10th house, opposite the Imum Coeli.

Planets are evaluated according to a whole set of criteria that includes comprehensive Western astrology rules. At their turn, planets emphasize specific types of houses, signs, repartitions etc., as previously explained.

Your Houses' Accentuations



Your angular houses, namely, the 1st, 4th, 7th and 10th houses, are very emphasized in your chart, Guy de Maupassant: according to the Tradition, they are the strongest and most dynamic houses. Should the rest of your chart concur, angular houses suggest that you are an enterprising, energetic and assertive man. Indeed, angular houses are said to generate impulses and to give a powerful and domineering personality.

Unusual fates are often linked to a predominance of angular houses, but this is only a partial indication...

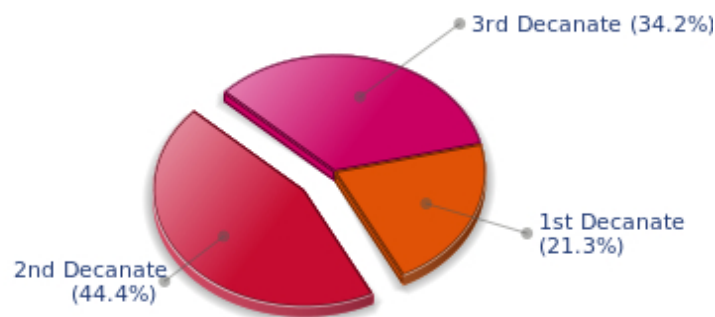
Your Esoteric Decanates

Each sign contains 30 degrees and can be divided into three equal parts: the decanates. The Tradition indicates that specific meanings can be associated to each of the three decanates. Their sphere of activity is usually limited to the Sun sign, however, it is even more interesting to observe the distribution of all the planets in the chart to get an idea of the respective importance of the three decanates, which can complement the description of the personality.

These meanings must be considered with the greatest caution. Indeed, they are minor characteristics that can only underline other outstanding traits of character.

Traditionally, the first decanate highlights the characteristics of the sign where a planet is located. The two other decanates correspond to sub-dominant planets, depending on the nature of each sign. This system leads to a multiplication of meanings and it is impossible to have a clear understanding: here, we prefer to give only the meaning of one decanate in comparison with the other two, within the birth chart as a whole. Again, the greatest caution is needed with regard to this minor indication as it is not always reliable: it is not essential that you read these texts in the beginning. You can get back to them later on, once you have read more important interpretations

Your Esoteric Decanates



The second decanate, which means the part between 10° and 20° of any zodiacal sign, prevails in your natal chart, Guy de Maupassant: these 10 zodiacal degrees emphasize logical thought and mental values. Therefore, you may be drawn to some kind of scientific activities, research, writing or any sort of expression where you have to... think a lot.

Annex 2: Karmic Study

The karmic theme is a good complement to the psychological portrait, or natal chart. This analysis is based on the positions of the Lunar Nodes, the Black Moon and the Part of Fortune: they are also called fictitious points and describe the spiritual purpose of your destiny. Because there is in all of us an experience and a quest, our life is an evolutionary journey... provided that we head towards the right direction, of course! Indian astrologers highly prize the Nodes axis (North Node and South Node). It is the Ariadne's thread that we are invited to follow. The Black Moon indicates the sector where we are most likely to transform or to transcend, whereas the Part of Fortune points out the area where we can easily express our specificity.

The Lunar Nodes: a spiritual path

Lunar Nodes have their roots in the Indian tradition and they are based on a simple concept: each of us have a mission of their own, here on earth, a destiny, a course. According to the Indian philosophy, life is a school: the nodal axis describes our past experiences (South Node, our karma, our spiritual inheritance or our previous lives), and our aims on earth (North Node, our Dharma, the purpose of our current incarnation). This is the reason why the study of the lunar nodes is called "Karmic astrology". Here, we shall not step into hypothetical past lives. Wherever our current trends may come from, all that really matters is that we become aware of the purpose of our life, its finality and our dharma. We are likely to understand our life purpose around the age of 37, when the Lunar Nodes return to their natal position.

You make friends easily and you earn your entourage's confidence and esteem. Very early, you develop an acute sense of fraternal relations, generously receiving and giving. This spirit of mutual aid may lead to a happy-go-lucky attitude that may border on carelessness... As you rely too heavily on friendship, there may be a danger to undergo a few setbacks: idealism and spontaneous dedication may meet with ungrateful reactions or the indifference of the very persons whom you try to help. Your destiny is probably marked with a quest of individual achievement. It is of utmost importance that you create, that you beget a fruit, a work or a child. Little by little, you become independent, without selfishness, but with the strength of those who know that they can only rely on themselves. Do not hesitate to live your dreams to the end and to engender, over and over again. Creation, whatever its form, is the path to your fulfilment. You slowly discover the pleasure to design as you please, without outside interference. It is important that you find an area for your personal expression and, as the poet says, "before the eyes, constantly, night and day, either a great labour or a great love".

Very early in life you showed a strong desire to intensely live through your passions. You are sensitive to your personal prestige and you adopted dramatic attitudes as you needed your merits to be acknowledged and you wanted to arouse esteem and admiration. Your individualistic ways may have caused setbacks: you are criticized for your egocentrism or at least, for your lack of openness and compassion. As time goes by, your life's challenge is probably to gain a taste for collaborations, fraternity, and unselfish love. If you can put aside your touchiness, you become able to relinquish your pride and to focus your energy on larger actions such as collective tasks, or even, universal works. Life teaches you a philosophy of harmony and union, far from your primary desires and needs. You then discover an entirely different realm, a spiritual dimension, the major features of which are abnegation, selflessness and the access to a world of altruism that provides more satisfactions than anything else. Self-sacrifice, friendship and fraternity are the path to your fulfilment.

Lilith or the Dark Moon

The Black Moon is the spark of refusal and distance that is dormant in all of us. Depending on the sign where she is found in your chart, she highlights the desire to transform and to sublimate a part of your life. The Black Moon is unfathomable and mysterious. She gives a different dimension to the sector she touches. Her manifestations are subtle; nonetheless, she is powerful, implacable, demanding to the extreme... The Black Moon is also called Lilith. She is the inner flame of your heroism and insubordination.

It is in the humanitarian field that rebellion is best expressed. Your dream is to become the spearhead for a different project of society, the Quixote of altruism. Each individual must be independent, really free to think and to act. Any hindrance to free will makes you indignant! The danger is that you may not tolerate any external constraint. This is probably the price to be paid for a freedom of thought that constitutes the core of your progression.

One of the main drives of your life is your rejection of mediocrity: the intention is commendable although it is two-edged. You attach so much importance to charisma that you may reject a person whom you deem – wrongly – unworthy of your esteem! If you avoid this trap, the requirements that you demand from yourself as well as from your close friends become an exceptional springboard for evolution.

The Part of Fortune in House

The Part of Fortune is a very ancient fictitious point that depends on the lunar phase at the time of birth. The astrological house tenanted is particularly strengthened. In your chart, the Part of Fortune is in the 11th house: anything that has a human nature catches your attention. Friends, ideals, great humanitarian causes... You have original ideas for the betterment of the world. You do not consider the Tradition – or Traditions – to be immutable and ossified. It is important that you work on a reform or an overhaul of existing institutions: although you do not turn into a revolutionary, you are sensitized to society or educational projects. With the help of your entourage, and because, better than anyone else, you can earn the consideration of your close friends, you will slowly transform your familiar surroundings... since you cannot change the world!

Retrograde Planets

The karmic tradition insists on the issues related to the so-called retrograde planets. They are considered to be the inheritance of a past that was not well experienced, a sort of unfinished business. The interpretations of the retrogradation may seem negative or excessive to you. However, you may relate to a scenario that you have often and repeatedly experienced... as if you underwent several setbacks that all have the same cause. Until the day you become aware of it and you can free yourself from it! Through the slow integration of these planetary energies, you will be able to overcome your difficulties and to pay your karmic debt. Actually, each retrograde planet highlights an opportunity for evolution. Nothing can be achieved without the will to grow spiritually and to defeat your own demons.

The karma associated with Saturn may border on self-censorship: during your childhood, particularly, you were doubtful of your abilities and your talents. You had a propensity to put yourself in a no-win situation and to under-estimate yourself. Obstacles abound: taboos and prohibitions of all kind slow down your evolution. Little by little, you learn to re-evaluate your possibilities and to gain more self-confidence. Your personal rigour then turns out to be constructive: you are not destabilized by life

ordeals and you practice a self-discipline that favours steady evolution. Although your path may be steep, it is nonetheless safe.

Neptune retrograding concerns spirituality. You may have expressed early in life a few reluctances about the subtle world of faith. You may have ignored destiny's signs and winks and you preferred to stick to your certainties, to a rigorous and objective control of your life. You dread your own aspirations and you readily trust others': this causes a lack of autonomy and the feeling that you may not receive as much as you give. However, several delusions teach you that you must relativize your calculating and methodical attitude and open up to the irrationality of love in order to find an inner and more spiritual progression. Embracing the invisible is a process that unfolds as years and experiences go by. Your own generosity increases as you become aware of your entourage's generosity.

Pluto retrograde suggests power issues and mishandled relations: for you, everything comes down to power struggles, submission and domination, Machiavellian manoeuvres, including within your couple... The results are complex behaviours and an obsession for the power to influence people. Yet, life teaches that you must simplify your relations and adopt more transparent attitudes and healthier desires... As years go by, you will tend towards more simplicity and you will slowly discover that human energy can, and must, be at the service of the good, or of well being, in compliance with our individual progression.

N.B: modern astrology attaches less and less importance to the principles of retrograding planets.

Conclusion

A few remarks are needed here in order to allow you to fully take advantage of your astrological portrait: firstly, do not forget that a birth chart is also a photograph of the sky at birth and a structure that not only contains the personality's characteristics, but also its potential evolution.

We all know that, in real life, people begin to know themselves when they are in their forties, or even later. Likewise, several traits of character in a portrait may seem surprising: in most cases, it means that such features are not yet developed.

Some personalities reveal themselves late in life, whereas others are more precocious. It must be remembered that psychological structures are in a state of continuous evolution because they are influenced by unfolding events and gradual maturity. We can never underline strongly enough the "mobile" nature of the personality, throughout a lifetime.

On the other hand, it is difficult to discriminate what is "already present" at this moment in your life when you are reading your chart's interpretation, from what will appear later in the logic of your evolution: you must sort out all the pieces of information provided and, in most cases, you will see that your astrological portrait is helpful for your endeavours to know yourself better.

Finally, several readings of an astrological portrait are usually necessary in order to absorb all its different meanings and to evaluate the relevance of each character trait.

In any case, better self-knowledge obviously contributes to faster personal blossoming, and it is undoubtedly one of astrology's major roles: contributing to know oneself better, in order to improve more rapidly, to deal with one's weaknesses and to avoid its drawbacks, and to take advantage of one's assets as efficiently as possible.
