



**Gigi Hadid's  
Astrological Portrait**





## Gigi Hadid's Astrological Portrait



<b>Introduction</b>	<b>2</b>
<b>Your Planets, Houses, Aspects, and Natal Chart</b>	<b>4</b>
<b>Preamble</b>	<b>7</b>
<b>Your Planetary Repartitions</b>	<b>8</b>
<b>Your Dominant Modes and Elements</b>	<b>9</b>
<b>Your Dominants: Planets, Signs and Houses</b>	<b>10</b>
<b>Your Style, Behaviour, and Peculiarities</b>	<b>15</b>
<b>Your Sensitivity</b>	<b>18</b>
<b>Your Affectivity</b>	<b>19</b>
<b>The Way You Take Action and Your Sexuality</b>	<b>21</b>
<b>Your Intellect and Your Communication Style</b>	<b>22</b>
<b>Your Goals, Motivations, Career, and Destiny</b>	<b>23</b>
<b>Your Assets and Your Part of Joviality</b>	<b>26</b>
<b>Your Serious Side</b>	<b>27</b>
<b>A Few Special Points</b>	<b>27</b>
<b>Your Isolated Planets</b>	<b>28</b>
<b>Annex 1: Your Minor Dominants</b>	<b>30</b>
<b>Annex 2: Karmic Study</b>	<b>34</b>
<b>Conclusion</b>	<b>37</b>



# Gigi Hadid's Astrological Portrait

## Introduction

To fully benefit from this portrait, we suggest that you read its introduction and its preamble carefully, and then that to take the time to soak up the interpretations of each chapter. Given the large number of texts, which mirrors the human being's complexity, you may need to go through the contents several times, so as to get a good grasp of their meaning and to know yourself better. This will reward your patience.

The purpose of this report is to describe your psychological portrait and to highlight the most fundamental features on the personal area. The report begins with the analysis of your planetary dominants and outlines your personality's general traits before going into further detail. Minor dominants are analysed at the end of Annex 1, for purposes of clarity. Your report then delineates the various facets of your personality:

In general, even when relationships are not involved, we express ourselves and we feel according to our character and our personal motivations: this is indicated by the Ascendant and the Sun sign which both give details on the way we function. They shed a tremendously important light which allows to figure out your personality. Here, we describe your Sun sign (your inner self), your Ascendant (your behaviour as seen by others), and the ruler of the Ascendant (interesting additional pieces of information about the style of your personality). These descriptions alone cover nearly a third or a half of your psychological signature, depending on your natal chart characteristics.

Then, we address your sensitivity, or in other words, the way you receive things and how you express your emotions ; it works as a constant filter for all your exchanges, even when it becomes a more secondary element in your amorous relationship, because at that moment, affectivity prevails. Sensitivity is the way you perceive things, it is your radar, your daily mood, and at the same time, it indicates how you react to your entourage, on a daily basis. It is what others immediately see of you. In the second paragraph, we explain in which areas of life your sensitivity and your emotions are strongest, therefore, where you are most vulnerable.

After this, it is your affectivity, the way you love and how you charm, that comes into play as soon as you fall in love: the first part indicates its basic structure or its main form. The second part describes the areas where it is best expressed and how you display it, according to your personality.

A third fundamental area deals with your mode of action and your sexuality: how you behave, how you manage to obtain what you want, what kind of desires you have. There are twelve possibilities, very

different from one another. The study discloses the specific one that applies to you. In the second paragraph, we explain in which life areas you may most efficiently take advantage of your capacity for action and for conquest.

Your ways of communicating and of thinking are obviously among the major elements that must be integrated into the delineation and the description of your personality. Indeed, they influence your general behaviour and may modify or enhance the image your project (for instance, extraversion may “compensate” a weak affectivity, but a huge number of cases are possible). An additional chapter indicates the favourite areas where you enjoy communicating, thinking and meeting with people.

Besides, we analyze an even more personal aspect that is important to define and understand what may occur within your couple: each of us have a centre of interest, a privileged manner to be fulfilled or to achieve our destiny; this main motivation is indicated by the positions of your Sun and your chart ruler in the astrological houses and we provide you with its detailed description.

A natal chart contains the potential for specific fulfilment and a whole range of assets, protections and qualities. How does the lucky factor manifest in your personality? In which area can you best exploit your qualities? The answers are precisely revealed to you in this chapter.

On the other hand, we all feel in us a part of vulnerability, doubts and fears. How does this part of solemnity or serious side play out? How is it possible to handle it in order to evolve and to get rid of useless elements? All this information is provided to you in these two paragraphs.

Then, you can discover three additional traits of your personality that must be considered as secondary ones. They deal with your predispositions, which means that they need to be triggered by external events because they are not influenced by your will; let's call it a part of fate. Please, bear in mind that your destiny can unfold only in accordance with what you are: therefore, even if they belong to your more unconscious self, these characteristics are parts of you, definitely.

The karmic chart complements the psychological portrait or natal chart. It is based on the positions of the Lunar Nodes, the Black Moon, and the Part of Fortune. These elements of the chart, sometimes referred to as fictitious points, provide information about the spiritual meaning of your destiny. Owing to the fact that we all have in us acquired knowledge and the urge to go on a quest, our life is an evolutionary journey... However, these texts must be read with great caution: this is the reason why you will find this analysis in the Annex 2 of your report.

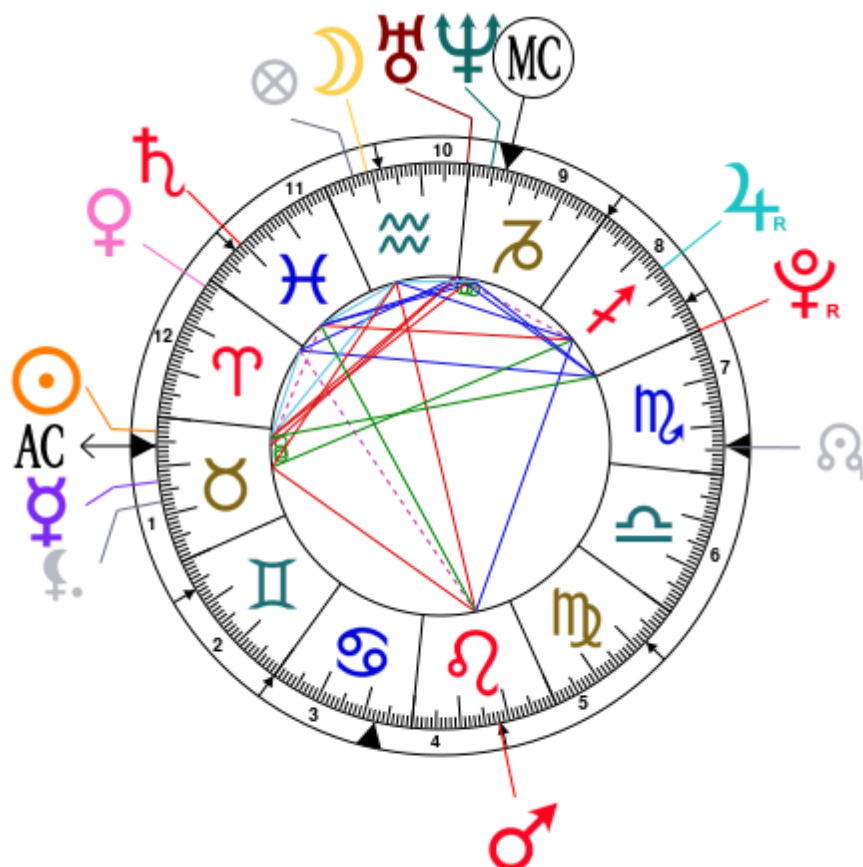


# Your Planets, Houses, Aspects, and Natal Chart

Gigi Hadid, born April 23, 1995, at 06:26 AM, Los Angeles Cedars-Sinai Hospital (Los Angeles), California, United States [118.23W ; 34.04N ; 7W00]

Natal Planets			In House	Natal Houses (Placidus)		
☉ Sun	2°56'	♉ Taurus	House 12	House 1	5°53'	♉ Taurus
☾ Moon	20°54'	♊ Aquarius	House 11	House 2	6°20'	♊ Gemini
☿ Mercury	13°05'	♉ Taurus	House 1	House 3	29°56'	♊ Gemini
♀ Venus	1°41'	♈ Aries	House 12	House 4	22°27'	♋ Cancer
♂ Mars	17°51'	♌ Leo	House 5	House 5	18°14'	♌ Leo
♃ Jupiter	14°38' R	♐ Sagittarius	House 8	House 6	22°12'	♍ Virgo
♄ Saturn	20°37'	♓ Pisces	House 11	House 7	5°53'	♏ Scorpio
♅ Uranus	0°25'	♊ Aquarius	House 10	House 8	6°20'	♐ Sagittarius
♆ Neptune	25°33'	♐ Capricorn	House 10	House 9	29°56'	♐ Sagittarius
♇ Pluto	29°57' R	♏ Scorpio	House 7	House 10	22°27'	♐ Capricorn
♁ Node	5°37' R	♏ Scorpio	House 7	House 11	18°14'	♊ Aquarius
♇ Lilith	17°11'	♉ Taurus	House 1	House 12	22°12'	♓ Pisces
AS AS	5°53'	♉ Taurus				
MC MC	22°27'	♐ Capricorn				

In keeping with the common practice, we consider that a planet posited within 1 degree of the next house belongs to that house. We allow an orb of 2 degrees for the ASC and the MC.



## List of Your Active Planetary Aspects

Please find below the list of all the active inter-aspects which are interpreted in this report, in addition to your planets in sign, in house, and all your planetary dominants. Since the aspects between slow-moving planets are of a collective nature, they are not displayed, in compliance with our interpretation rules.

- ★★★★★ Sun quintile Moon, orb 0° 01'
- ★★★★★ Sun conjunction Mercury, orb 10° 09'
- ★★★★★ Sun semi-sextile Venus, orb 1° 15'
- ★★★☆☆ Sun square Uranus, orb 2° 3'
- ★★★★★ Sun square Neptune, orb 7° 23'
- ★★★★★ Sun inconjunction Pluto, orb 2° 59'
- ★★★★★ Sun conjunction Ascendant, orb 2° 56'
- ★★★★★ Moon square Mercury, orb -7° 49'
- ★★★☆☆ Moon opposite Mars, orb -3° 03'
- ★★★★★ Moon sextile Jupiter, orb 6° 16'
- ★★★★★ Moon semi-sextile Saturn, orb -0° 17'
- ★★★★★ Moon semi-sextile Midheaven, orb -1° 32'
- ★★★☆☆ Mercury square Mars, orb 4° 46'
- ★★★★★ Mercury inconjunction Jupiter, orb -1° 33'
- ★★★★★ Mercury conjunction Ascendant, orb 7° 12'
- ★★★★★ Venus sesqui-quadrate Mars, orb 1° 1'
- ★★★★★ Venus sextile Uranus, orb 1° 15'
- ★★★★★ Venus trine Pluto, orb 1° 43'
- ★★★★★ Mars trine Jupiter, orb -3° 13'
- ★★★★★ Mars inconjunction Saturn, orb -2° 45'
- ★★★★★ Jupiter square Saturn, orb 5° 59'
- ★★★☆☆ Saturn semi-square Ascendant, orb 0° 15'
- ★★★★★ Saturn sextile Midheaven, orb -1° 49'
- ★★★☆☆ Uranus square Ascendant, orb 5° 27'
- ★★★★★ Uranus conjunction Midheaven, orb 7° 58'
- ★★★★★ Neptune conjunction Midheaven, orb 3° 06'

## Meaning of Stars

Stars indicate the strength of the aspects. Two solid coloured stars (there are half-stars also), mean that the aspect is powerful enough to be noticed at the first reading.

We strongly advise that you read the paragraphs displaying less than two stars later on, after you have absorbed the full import of the other texts.

The yellow colour indicates a soothing and conciliating aspect, and the red colour, a dynamic and tense aspect. The red aspects enable you to evolve, to take action, and to learn to turn your "weaknesses" into

assets through your life experiences. The yellow aspects are innate strengths on which you rely in order to grow better with the former...

## Preamble

When interpreting a natal chart, the best method is to start gradually from general features to specific ones. Thus, there is usually a plan to be followed, from the overall analysis of the chart and its structure, to the description of its different character traits.

In the first part, an overall analysis of the chart enables us to figure out the personality's main features and to emphasize several points that are confirmed or not in the detailed analysis: in any case, those general traits are taken into account. Human personality is an infinitely intricate entity and describing it is a complex task. Claiming to rapidly summarize it is illusory, although it does not mean that it is an impossible challenge. It is essential to read a natal chart several times in order to absorb all its different meanings and to grasp all this complexity. But the exercise is worthwhile.

In brief, a natal chart is composed of ten planets: two luminaries, the Sun and the Moon, three fast-moving or individual planets, Mercury, Venus and Mars, two slow-moving planets, Jupiter and Saturn, and three very slow-moving planets, Uranus, Neptune and Pluto. Additional secondary elements are: the Lunar Nodes, the Dark Moon or Lilith, Chiron and other minor objects. They are all posited on the Zodiac wheel consisting of twelve signs, from Aries to Pisces, and divided into twelve astrological houses.

The first step is to evaluate the importance of each planet. This is what we call identifying the dominant planets. This process obeys rules that depend on the astrologer's sensitivity and experience but it also has precise and steady bases: thus, we can take into account the parameters of a planet's activity (the number of active aspects a planet forms, the importance of each aspect according to its nature and its exactness), angularity parameters; (proximity to the four angles, Ascendant, Midheaven, Descendant and Imum Coeli or Nadir, all of them being evaluated numerically, according to the kind of angle and the planet-angle distance) and quality parameters (rulership, exaltation, exile and fall). Finally, other criteria such as the rulership of the Ascendant and the Midheaven etc. are important.

These different criteria allow a planet to be highlighted and lead to useful conclusions when interpreting the chart.

The overall chart analysis begins with the observation of three sorts of planetary distributions in the chart: Eastern or Western hemisphere, Northern or Southern hemisphere, and quadrants (North-eastern, North-western, South-eastern and South-western). These three distributions give a general tone in terms of introversion and extraversion, willpower, sociability, and behavioural predispositions.

Then, there are three additional distributions: elements (called triplicity since there are three groups of signs for each one) - Fire, Air, Earth and Water - corresponding to a character typology, modality (or quadruplicity with four groups of signs for each one) - Cardinal, Fixed and Mutable - and polarity (Yin and Yang).

There are three types of dominants: dominant planets, dominant signs and dominant houses. The novice thinks astrology means only "to be Aries" or sometimes, for example, "to be Aries Ascendant Virgo". It is actually far more complex. Although the Sun and the Ascendant alone may reveal a large part of the character - approximately a third or a half of your psychological signature, a person is neither "just the Sun" (called the sign) nor just "the first house" (the Ascendant). Thus, a particular planet's influence



may be significantly increased; a particular sign or house may contain a group of planets that will bring nuances and sometimes weaken the role of the Ascendant, of the Sun sign etc.

Lastly, there are two other criteria: accentuations (angular, succedent and cadent) which are a classification of astrological houses and types of decanates that are occupied (each sign is divided into three decanates of ten degrees each). They provide some additional informations.

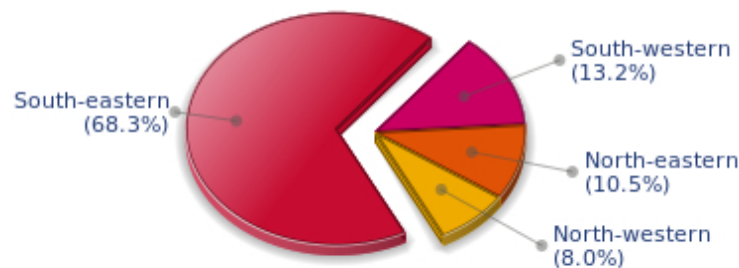
These general character traits must not be taken literally; they are, somehow, preparing for the chart reading. They allow to understand the second part of the analysis, which is more detailed and precise. It focuses on every area of the personality and provides a synthesis of all the above-mentioned parameters according to sound hierarchical rules.

As explained in the introduction of your Psychological Portrait report, minor dominants are analysed at the end of Annex 1, for purposes of clarity.

## Your Planetary Repartitions

Each quadrant is a combination of the four hemispheres of your birth chart and relates to a character typology. The Southern hemisphere – the top of your chart, around the Midheaven – is associated with extraversion, action, and public life, whereas the Northern hemisphere prompts to introversion, reflexion, and private life. The Eastern hemisphere – the left part, around the Ascendant – is linked to your ego and your willpower, whereas the Western hemisphere indicates how other people influence you, and how flexible you are when you make a decision.

### Your Four Quadrants

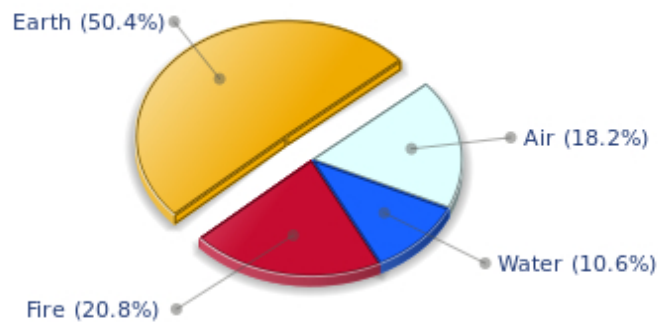


Gigi Hadid, the diurnal South-eastern quadrant, consisting of the 10th, 11th and 12th houses, prevails in your chart: assertion and goals achievement are at the centre of your concerns. You are very keen to implement your dreams and your plans. You achieve your ambitions as soon as possible, whether through an active social life, highly charged friendly relations, or an urge to take actions in order to reap - in the eyes of the world, of course - the rewards of your dynamism. It is likely that spirituality or humanitarian actions are part of your motivations, sometimes at the price of some degree of isolation.

## Your Dominant Modes and Elements

Gigi Hadid, here are the graphs of your Elements and Modes, based on planets' position and angles in the twelve signs:

### Your Four Elements



Like the majority of Earth signs, Gigi Hadid, you are efficient, concrete and not too emotional. What matters to you is what you see: you judge the tree by its fruits. Your ideas keep changing, words disappear, but actions and their consequences are visible and remain. Express your sensitivity, even if it means revealing your vulnerability. Emotions, energy and communication must not be neglected; concrete action is meaningless if it is not justified by your heart, your intellect or your enthusiasm.

Gigi Hadid, Fire is dominant in your natal chart and endows you with intuition, energy, courage, self-confidence, and enthusiasm! You are inclined to be passionate, you assert your willpower, you move forward, and come hell or high water, you achieve your dreams and your goals. The relative weakness of this element is the difficulty to step back or a kind of boldness that may prompt you to do foolish things.

The twelve zodiacal signs are split up into three groups or modes, called quadruplicities, a learned word meaning only that these three groups include four signs. The Cardinal, Fixed and Mutable modes are more or less represented in your natal chart, depending on planets' positions and importance, and on angles in the twelve signs.

## Your Modes



The Fixed mode corresponds to a majority of elements in your chart, Gigi Hadid, and represents the desire for security and durability: you are able to concretely appreciate a situation and its stability. You definitely prefer to play the role of a loyal, obstinate and hard-working person, rather than to try new and risky experiences - beware, however, not to confuse obstinacy with intransigence. You structure, cement, and strengthen everything you find on your way: it is your nature, although you are not especially interested in swiftness: slow and steady...

## Your Dominants: Planets, Signs and Houses

The issue of dominant planets has existed since the mists of time in astrology: how nice it would be if a person could be described with a few words and one or several planets that would represent their character, without having to analyse such elements as rulerships, angularities, houses, etc!

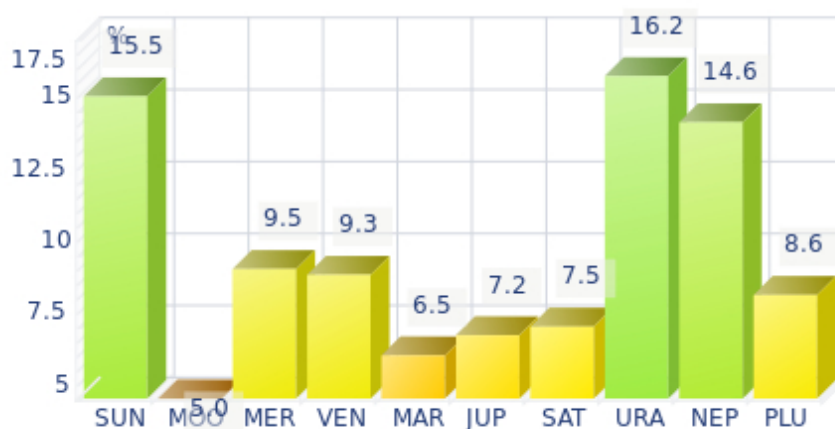
The ten planets - the Sun throughout Pluto - are a bit like ten characters in a role-play, each one has its own personality, its own way of acting, its own strengths and weaknesses. They actually represent a classification into ten distinct personalities, and astrologers have always tried to associate one or several dominant planets to a natal chart as well as dominant signs and houses.

Indeed, it is quite the same situation with signs and houses. If planets symbolize characters, signs represent hues - the mental, emotional and physical structures of an individual. The sign in which a planet is posited is like a character whose features are modified according to the place where he lives. In a chart, there are usually one, two or three highlighted signs that allow to rapidly describe its owner.

Regarding astrological houses, the principle is even simpler: the twelve houses correspond to twelve fields of life, and planets tenanted any given house increase that house's importance and highlight all relevant life departments: it may be marriage, work, friendship etc.

Gigi Hadid, here is the evaluation diagramme for your planets:

## Your Dominant Planets



The three planets that are most highlighted in your chart are Uranus, the Sun and Neptune.

Uranus among your dominant planets: just like Neptune and Pluto, Uranian typology is less clearly defined than the so-called classical seven planets that are visible to the naked eye, from the Sun to Saturn. However, it is possible to associate your Uranian nature with a few clear characteristics: Uranus rhymes with independence, freedom, originality, or even rebelliousness and marginality, when things go wrong...

Uranus is Mercury's higher octave and as such, he borrows some of its traits of character; namely, a tendency to intellectualize situations and emotions with affective detachment, or at least jagged affectivity.

Therefore, you are certainly a passionate woman who is on the lookout for any kind of action or revolutionary idea, and you are keen on new things. Uranians are never predictable, and it is especially when they are believed to be stable and well settled that... they change everything - their life, partner, and job! In fact, you are allergic to any kind of routine, although avoiding it must give way to many risks.

One of the dominant planets in your birth chart is the Sun. He symbolizes will, magnetism, sense of honour and dignity. You are a Solar being, and you often display charismatic and leadership qualities. Your warmth and your persuasive power lead you far away from pettiness. You enjoy thinking big and, consequently, you move forward according to what you decide.

Your Solarian weakness may be related to the sin of pride or to excessive authority. The frontier between pride and vanity is tenuous: be careful not to overstep it and to keep the nobleness of heart that is part of your charm.

With Neptune as one of your three dominant planets, you are a secretive and ambiguous person, often confused or unclear about your own motivations! Indeed, you are endowed with unlimited imagination and inspiration, as well as with an extreme sensibility that may turn you into a psychic or a clairvoyant. On the other hand, your impressionability is such that you may have difficulties in separating what is concrete and solid from illusions or dreams.

A mystic, a visionary or a poetess, you daydream, like any Neptunian, and you see what few people only can see, all of this being shrouded in aesthetic mists when you are fired with enthusiasm.

A boundless, infinity-loving woman like you is inevitably likely to be more vulnerable and easily hurt because of your acute perception of events. In such cases, you are hit full in the face, and you may sink into gloomy daydreamings and dark melancholy.

That said, this mysterious aura definitely gives you an indefinable charm in the eyes of your close friends who are often fascinated by your unique ability to feel and to see what ordinary people can never see!

### Your Dominant Signs



In your natal chart, the three most important signs, delineated according to the above-mentioned criteria, are, in decreasing order of strength, Taurus, Aquarius and Capricorn. They are often prominent because your Ascendant and your Sun are posited there. However, it is not always the case: it may be because they are occupied by a cluster of planets, by a planet near an angle other than the Midheaven and the Ascendant, or because two or three planets are very active and form numerous aspects from these signs. Therefore, you partly take on the three signs' characteristics, which are somehow superimposed on your natal chart, and all the more so if any of the signs in question is highlighted.

With the Taurus sign so important in your chart, you are constructive, stable, and sensual. Good taste, sense of beauty, manners, and unfailing good sense - all these qualities contribute to your charm and seductive power. Furthermore, if some people criticize your slow pace and your stubbornness, you rightly reply that this is the price for your security, and that you like the way it is - slow and steady....

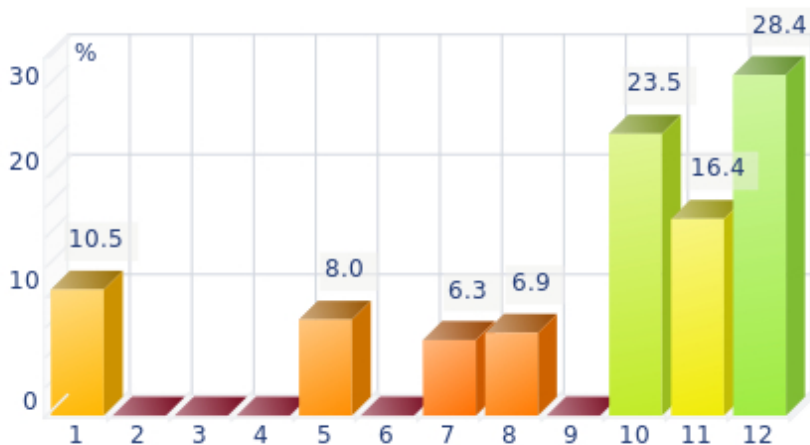
Aquarius is one of the most important signs in your natal chart: it endows your personality - at least one of its facets - with originality, to the point of eccentricity in spite of a sometimes distant and humane side. Likeable and impassive at the same time, you are a paradoxical woman, very hard to define because the two planets Uranus and Saturn blend their qualities to create the so complicated and endearing sign that inspires your character. Saturn's seriousness and impassivity is added to Uranus' rebellion, talent, individualism, charisma, extravagance, and unpredictability! One of your main characteristics is that you never open up on a personal basis, but you tend to do so easily in public. You are actually quite strange. Sexy and charming in public, despite your nice and sociable character, you could frustrate many of your admirers in private because of your impossibility to show deep and warm affection, emotions, tears... But appearance and reality are two different things anyway - you are a kind of a genius, or you have at least a



tremendous charm with this sign. You have many friends and an active social life. If you are detached in your love life - only in this aspect, since the rest of chart will confirm it or not - this is no big deal!

Capricorn is one of your dominant signs and endows you with a grave and serious style that seems to stick to you constantly. But if you have that reserved and cold side - as some extrovert people may think - on the other hand you possess sturdy qualities: you are strong-willed and tough. Your long-term vision, your sense of duty, and your ambition are not affected by the derisory and erratic motions that seem to upset most mortals less steady than you. Besides, you are like a good wine, you age well and your natural solemnity or serious side paradoxically turns into an almost cheerful appearance, as you grow older. You are actually very sensitive when it comes to love. Faithful, caring, sweet, and sensitive, your behaviour is very different in your everyday, sentimental life. A golden heart beats under your tough and austere appearance...

### Your Dominant Houses



Houses 12, 10 and 11 are the most tenanted ones in your natal chart. To compute their strength, planets and angles are weighed according to various astrological criteria such as swiftness, activity, angularity, rulership etc. From the analysis of the most tenanted Houses, the Astrologer deduces the fields of activity that are most relevant to you, be it because of what you are experiencing, or what you may experience in the future, or because of your deep inner motivations.

The 12th house is emphasized in your chart: like the 8th house, it has a rich and complex meaning. Although its bad reputation is likely to scare most readers in the first place - it is indeed the house of hidden or isolated places, of solitude, of ordeals or enemies - it can also mean that a part of your life is very deep and intense. If your achievements are not visible in the public eye, you may fulfil yourself in a different but equally important way: you may be involved in secret activities, humanitarian causes, and projects in favour of disadvantaged people. You are likely to work in quiet and remote places. In many cases, you will gain from these hidden activities as many treasures as people who have a more public destiny. It may be because you sublimate your work, or only because you successfully carry out your task within your environment. There is no such things as a good or a bad house, because each area of life is necessary in its own way, and we need all of them, if we are to improve spiritually.

With a prominent 10th house, your destiny's achievement may be very notable: the 10th house represents your career, your public life, and your ambitions. A good deal of your energy may thus be used to successfully implement what you have in mind. Instinctively, you are very keen to make your dreams

come true. Sooner or later, you will deal with the public, and your personal achievement will go through trials and ordeals: other people and visible actions.

The 11th house is among your dominant houses. Therefore, social life and/or friendships are very important, even strategic to you.

You think that group activities, whether in the humanitarian field or simple gatherings of friends, are endless sources of inspiration and of enjoyment, provided that there are no tensed aspects in this sector. Everything human is important to you, often more important than your own success, unless your 10th house is also powerful.

## Your Style, Behaviour, and Peculiarities

What is commonly known as "sign" indicates the position of the Sun in the Zodiac. The Sun highlights all the characteristics of the sign he tenants. According to astrology traditional rules, these characteristics are all the more pure and exact when the Sun is strong in the sign, or when the sign is particularly highlighted within the chart. Here, we indicate the pure characteristics of the sign but you must bear in mind that they may only shed a light on a particular aspect of your personality. Indeed, the sole sign of the Sun, or of the Ascendant, can never describe an astrological chart because it depends on the degree of strength of the said sign in your chart.

Another important point must be underlined. Contrary to the Ascendant, which clearly describes your appearance, your vitality, your physical constitution, your spontaneous behaviour and the image you project, your Sun sign describes your inner self, which you may not completely be aware of, and which may emerge gradually as you mature: it is about your inner personality that you reveal only to the members of your entourage whom you trust. The Sun sign is likely to be the final form of your personality, once it has evolved in line with the energies of the other parts of your chart, the beginning of which is seen in the Ascendant, your external "bark".

The Ascendant is one of the major components of your natal chart. It is the zodiacal sign that rises in the East at the very moment of your birth. To calculate it, it is therefore necessary to know your exact time of birth.

It provides with a wealth of information on your personality. It is one of the key features that allows the analysis of several parts of you, such as your appearance, your character as it is initially perceived and your immediate behaviour. It describes the external aspect of your personality which you always display, but it also describes your physical constitution in the long-term, in other words, your health.

Please be aware that, in spite of the importance of the Ascendant, the accuracy of its description depends on how strongly highlighted it is in your natal chart. We use the entire set of astrological rules to assess the strength of the Ascendant. In most cases, the Ascendant is as revealing as your "sign", i.e., the sign where the Sun is posited at the time of birth.

## You were born under the sign of Taurus and your Ascendant is in Taurus

Before broaching the details of the meaning of your Sun and your Ascendant, as a preamble, we offer a brief generic interpretation of their combination in your chart:

You are twice a Taurus! However, are you a peaceful ruminant, or a proud bull in its arena? As you have probably noticed, Taurus is often described in quite an ambivalent way. It is said to be calm, patient, with a nose for good bargains, and to deeply enjoy life. But it is also compared to a bulldozer with its hooves which can make the earth shake. Actually, this is quite easy to understand. Indeed, as Taurus becomes easily wrapped up in its passions or its obsessions, hence its well-known instinct of possession, it freely releases its enthusiasm and its determination. Taurus is perfectly well illustrated for instance with the person who is sensitive to criticisms, and who can spend the whole night working on his/her centre of interest, or who can focus on a challenging project for weeks. In a word, although it requires some time to get you started, once you get down to it, no one can stop you anymore. In the private

sphere, you can be likened to a tranquil and indifferent pasha who indulges in his sensual inclinations...

## The sign and the Ascendant in Taurus

Peace, joy of life and sensuality are essential to you: You have a simple and quiet nature. You easily find happiness because you are not competitive. In addition, your relaxed attitude and your common sense always take you to places where you are happy, even though you are not the number one, even though you do not move in haste. The important thing for you is to construct, with patience and persistence. These two qualities yield strong, steadfast, and sustainable efforts that can withstand any pitfalls.

You are gentle, with a slow thinking process, but once you have opted for an orientation, nothing, no one, can make you change your mind. You loathe changes in general, and once you have taken the few major unavoidable decisions in the course of your life, you are on track!

As you are born under this sign, you are loyal, steadfast, strong, patient, enduring, persistent, attached, sensual, realistic, constructive, tenacious, with a strong need for security. But you may also be stubborn, rigid, possessive, materialistic, static and slow.

In love, Madam, you are sensual and seductive. Your appetite for life is huge: Taurus is the most feminine sign of the Zodiac, therefore, you are the essence of femininity and you can be the mistress and the wife, in turn, without difficulty. You enjoy carnal pleasures as much as gastronomy and conjugal life.

You are possessive and jealous but, if your partner provides you with the harmony that you forcefully demand, you become an accomplished housewife. You will make a palace out of your house, you excel in all domestic tasks, you are an exceptional cook and, with your talent for interior decoration, you beautifully arrange lush plants with flowers and exquisite furniture. Your home is a haven of peace, richness, harmony and calm, with children radiant with health around you.

## The ruler of your chart is in Aries

The ruler of the Ascendant, also referred to as the chart ruler, brings a few interesting nuances to the meanings provided by the Sun and the Ascendant. The sign in which the ruler of the Ascendant is posited fine-tunes the style of personality described by the Sun and the Ascendant. It may strengthen it if the sign is identical to either of them.

The ruler of the Ascendant, Gigi Hadid, is Venus. It is located in Aries and adds a note of rapidity and impulsiveness into your chart. You have a spontaneous and enterprising side which prompts you to take action quickly and to be a pioneer. However, as a consequence of this refreshing impetuosity, you may get bored quite quickly and move on to something else if you lose your enthusiasm.

## Aspects to your Ascendant

Several planets form an aspect with your Ascendant, Gigi Hadid. Therefore, in their specific way, they modify your behaviour and your personality, which do not take on the pure characteristics of your Taurus Ascendant only, but which are a blend of its characteristics with those of the said aspects.

★★★★☆ Sun conjunction Ascendant, orb 2° 56'

The conjunction of the Sun with the Ascendant represents the perfect fusion of will and vitality, and will and external appearance, Gigi Hadid. This conjunction indicates an above average charisma or

magnetism. Moreover, there is a concentration of energy which enables you to naturally shine and attract, as well as to move mountains provided... you decide to do so!

★★★★★ Mercury conjunction Ascendant, orb 7° 12'

Your sense of communication and your intellectual process perfectly match your external appearance, Gigi Hadid. Thanks to Mercury, you are able to carry out your self-analysis very well and quickly, which gives a lot of spontaneity to your intellectual exchanges with other people.

★★★★★ Uranus square Ascendant, orb 5° 27'

This dissonance of Uranus with your Ascendant endows you with a rebellious, original, and unpredictable side, which gives your behaviour a note of dynamism and nonconformism. Of course, other people are sometimes deeply disconcerted by your attitude which does not fit classical or social standards, and you may suffer its consequences, meaning that you feel misunderstood, incorrectly perceived, and considered as a disturbing free electron, or an untrustworthy person. You must remain true to yourself, but at the same time, you must exercise some caution in order not to fall prey to unpleasant misunderstandings.

★★★★★ Saturn semi-square Ascendant, orb 0° 15'

This hard aspect between Saturn and your Ascendant may bring about a lack of self-confidence and some inhibitions in your behaviour, in people's eyes, Gigi Hadid. Therefore, you must have trust in yourself and you must not be taken away into the spiral of doubts with its usual consequences, which are to hide away, or on the contrary and as a compensation, to overdo. Please, keep in mind that all this is highly subjective, and that in most cases, if you fully understand it, you can gradually overcome this slight restraint, and even turn it into strength. This is how you can keep your self-esteem and transform your prudence into... an asset.



## Your Sensitivity

Your sensitivity is devoid of infatuation or carelessness, Gigi Hadid; you belong to the cerebral type and, due to your needs for inner security and for freedom, you consider feelings and emotions as burdens. You are apparently phlegmatic and almost detached. However, your swift reactivity and your fertile imagination make you appreciate friendly gatherings with numerous and varied exchanges. You do not wear your heart on your sleeve. At first, you seem cold but those who know you are aware of your very original and unique sense of humour. Your receptiveness is remarkable. Your observation talents and your detachment work wonders in the defence of your anti-conformist and rebellious ideas. Your stubbornness is obvious and it is very difficult to make you change your mind because you are affectively too vulnerable: it would require lengthy and thorough argumentations aiming at your intellect...

You are popular with your friends, Gigi Hadid. You easily shine, thanks to your sensitivity, your whimsical side, your mobility and your charm tinged with imagination. Even at work, you often win your clientele's favours, and if by chance, you are in a commercial team, you are chosen and sent ahead to deal with customers because you are so likeable!

You can happily express your emotions through shared projects - with your friends, preferably - in which you shine with selflessness and your childlike but endearing charm.

### ★★★★★ Moon opposite Mars, orb -3° 03'

This Moon-Mars dissonance suggests touchiness and sometimes, aggressiveness. You are irascible and very sensitive to all sorts of threats and dangers. You react very quickly, too hastily. To protect your well being, you must learn to control your mood, to coordinate your actions and to balance your opinions. You are often disturbed by plain facts: either you seek refuge in your intimate realm and refuse to face the truth or, on the contrary, you are engaged in altercations, which forbid all tranquillity. It is important that you balance these two tendencies and that you alternate moments of action with phases of carelessness and relaxation. These two attitudes are relatively irreconcilable.

### ★★★★★ Sun quintile Moon, orb 0° 01'

This aspect is a strong homogeneity factor: the image you project is in conformity with your real nature and does not upset your basic balance. This is probably the cause of your feeling at ease, your consistent behaviour and your determination to remain your true self, regardless of external pressures and whatever is expected from you. At best, your will and your sensitivity are in harmony, your unconscious abilities are mobilized and controlled by your conscious will, with no imbalance. However, it is important to avoid the traps of self-satisfaction that would be harmful to your real exchanges and would lock you up in comfortable and rigid schemes. It is possible to remain natural and yet, not be content with the sole well being of those who never cheat themselves.

### ★★★★★ Moon semi-sextile Saturn, orb -0° 17'

This harmonious Moon-Saturn aspect is an element of stability for your private life. Your daily life lives up to your demands, you are totally true to yourself and logical through your very intimate behaviour. You do not choose the easy way out: on the contrary, it is in difficult situations that you are at your best. It is very unlikely that you become destabilized by trifles. This aspect indicates stability and also perfectionism. You are longing for a private life respectful of your heart of hearts and your genuine desires. Your well being is at this price, and its quest remains perpetual. Despite your reserved private behaviour, your emotions run very deep. You have a strong need for protection and for security. Your aspirations lead you towards contemplation or studies, more than towards social futilities.

★★★★★ Moon sextile Jupiter, orb 6° 16'

Why should one complicate one's life if it is possible to enjoy the simple joys of the present? This harmonic Moon-Jupiter aspect indicates a cheerful nature, which earns your entourage's liking and protects the balance of your intimate life. Your sociability is supported by your desire to smoothly adhere to a group, a social or family cell. You are fond of moments where you unwind and relax. You value your daily comfort and, to preserve it, you accept to play by the rules of privacy. When this aspect dictates your attitudes, you behave like a person easy to get along with... even though your personal demands, relegated to the backseat, come up again at top speed and force you to behave more in line with your inner needs.

## Your Affectivity

In your chart, the Sun is in Taurus and Venus, in Aries. Venus in Aries' ingenuous spontaneity opposes the Taurean Sun's constructive scepticism. In the affective sphere, you respond to novelty and to first meetings' emotions. There is an unquenchable thirst for experience and for the desire to preserve the natural (or reckless) characteristic of a budding relationship. This spontaneous infatuation is opposed by Taurus' major concern: to take the time to live and to experience a fulfilment that never occurs instantly. The danger with this zodiacal duet lies in its contradictions; Aries' untimely crazes upset Taurus' well being. Or, conversely, you may try to maintain at any cost (Sun in Taurus) a dying love. If the flames of the beginnings are ready to be roused, the Taurean will need to guard against uncertain changes, which is opposed to the Venusian thirst for emotions. Taurus slows down Aries. Equilibrium is achieved! The big advantage with this configuration is that it provides a clever and subtle balance between instinct of self-preservation and desire to live intensely. When it is well integrated, this Aries-Taurus type allows to smoothly fuel a relationship – but not without clashes and emotions – which lives on an extraordinary vitality, over and over again.

Love at first sight, flash in the pan, amorous impulsiveness? All these are part of your way of loving or to fall in love, Gigi Hadid. Throughout your relationship, you maintain this kind of jerky and lively style, that may seem childish or naïve, but that is so generous and cheerful! You are undeniably possessive and you are not concerned with your partner's opinion but, fortunately, you readily forgive because of your spontaneity and your authenticity. When your relationship is intense, everything is fine. There is no romanticism, no complications with you. You love with ardour and, except for a few crazes and opportunities for new pastures here and there, the only danger may be that boredom settles in. In that case, you leave without regret and you quickly forget what consumed you, not so long ago.

Gigi Hadid, whether you want it or not, you are the illustration of the famous French saying that: "To live happily, let's live in hiding!" Nothing suits you better than tranquillity, peace and, finally, to some extent, privacy in your love life. It may be caused by many different reasons, sometimes shyness, romanticism, modesty etc. but in any case, you are prone to experience love better in the clandestine mode. The legalization of your union, so often sought after by others, is something you dread more than anything else. You are romantic, secretive, even melancholy, sometimes, and you tend to sublimate or to spiritualize your feelings, with the effects of bringing about moments of affective loneliness that do not really take a toll on you. Indeed, you operate a sort of fatalistic association of love with ordeals in general: often, you meet with your soul mate during difficult circumstances or in a climate of sorrow. Is it due to your highly dedicated and loving nature, or to your innate goodness? Whatever the answer may be, you often establish serious links during such occasions. It may occur in a closed setting, a hospital or a

convent, or a prison. Mysteriously enough, love is born and develops easily. You are a philanthropist with genuine compassion at the bottom of your soul and you give of your best when the period is filled with sorrows and doubts. You are among those who can commit themselves in all sincerity and fervour to charities. There, your feelings will certainly find a natural outlet, in so far as you are unable to express them strongly enough in your concrete love life. In spite of your misleading appearances, you are rather the shy and reserved kind in the very intimate area of feelings but you are so nice, dedicated and generous that you are not any worse off than others: you successfully turn your ordeals into periods of personal enrichment and beneficial growth, on the spiritual plane as well as for your destiny. Besides, you are blessed with a kind of protection against life hardships. The ravages of loneliness have absolutely no effect on you, to your close relations' deep astonishment.

★★★★★ Venus trine Pluto, orb 1° 43'

You exercise exceptional clear-sightedness in love. Your passions are subtle, deep, although disconcerting and imperceptible to the outsider. You display no gullibility and you keep your distance. This is part of your charm. You detect what is really at stake in your couple's relationship and in your sentimental attitude. You drive the boat of your sensitivity without falling victim to mirages and affective traps. The only danger is that you may be too calculating. As you try to totally control love and to constantly pull the strings, you may lose the ingenuity and innocence which are necessary to nurture a relationship. You give proofs of your love in a very personal way and you never hesitate to use paradoxes to preserve the authenticity of your relations. You can anticipate problems and prevent difficulties.

★★★★★ Venus sextile Uranus, orb 1° 15'

Your charm lies in the originality of your approach to love and in your uncompromising attitudes. Your motto? Freedom of love, whatever the price! Should your sentimental life become dull, you find a solution: you are romantic and you reinvent your couple's life, you give a new and unexpected momentum to your emotions. You create the kind sharpness that contributes to your exceptional affective life. You do not fear love at first sight or blazing passions. On the affective plane, you know where you are heading for, whom you love ... or love not. There is an indisputable intransigence. The heart impulses are irrevocable and implacable. You dream of a sentimental life that fulfils your aspirations and you use all possible means to achieve your ideal. Even though you may have to make the necessary sacrifices.

★☆☆☆☆ Venus sesqui-square Mars, orb 1° 1'

This Venus-Mars aspect indicates a sensitivity all on edge and an impulsive character. Emotions and heart impulses cause a marked tension. Life is an affective battlefield. Love is omnipresent but often fragile: impulsiveness reigns over the realm of feelings. The object of desire may become irresistible and implacable, or the sense of confrontations prevents affective tranquillity. However, the richness of your emotional responses is to be noted: you are more inclined than others to be guided by amorous fevers and you live intense passionate experiences. Your overwhelming impressionability must be contained. Romantic people seldom enjoy tranquillity!

★★★★★ Sun semi-sextile Venus, orb 1° 15'

This aspect gives a strong concern about the image you project. You pay a lot of attention to the impression you make and to the charm you exude. You need to know that you can rely on your seductive capacity and earn the liking of your entourage. What people think is important to you and you try to meet your close friends' expectations. You certainly want to please them, but above all, you need their attention. You are seeking pleasure, esteem and affection. But ideals and desires make up a whole: you

can be at your best only with those who naturally attract you and for whom you have an esteem that is independent from facts. Your feelings are a response to your quest of the absolute: the persons you find likeable are adopted. Other people are rejected irrevocably! Your character is very affective and it constitutes an asset in many circumstances. Your capacity to seduce, to gain support and to earn esteem is above average. The only danger may be that you abide by the current fashion and trend more than by your own motivations and by what is essential, for the sake of appearances.

## The Way You Take Action and Your Sexuality

What an energy, Gigi Hadid! You take so many initiatives, you have so much strength for action, construction and struggle! You are part of the conquerors, loyal and concerned about panache. Your vitality is such that you can achieve your objectives and release all your creativity. However, you are so proud and so unyielding that you cannot tolerate the faintest annoyance on your way: if you are vexed, you may turn into the opposite direction as a matter of reaction. Sexually, your magnetism and your energy work wonders. You are not complicated and, as long as your slightly domineering nature is respected and you are granted due admiration, all goes perfectly well. You usually have a lot of self-confidence and you believe in you. This characteristic feature may turn you into a hero with Hercules's strength and solar charisma.

Creativity and leisure are the best outlets for your capacity of action, Gigi Hadid. A conquest must be exempt of constraint, otherwise you cannot open up totally and unreservedly. Your energy expresses itself best in the fields you choose yourself, such as outings, personal projects, festivals, love affairs (Mars' conquering spirit...), sports, games, etc.

The Tradition also mentions children, and it is very likely that their upbringing is stern. Mars is never soft. He is hot and dry, and his efficiency in several areas of life is inevitably far from tenderness. You may be a conqueror in creativity, love and leisure, but please, be a mother hen when this responsibility falls to you.

### ★★★★★ Mars trine Jupiter, orb -3° 13'

Coordinated action wins over almost all obstacles! You mobilize your energy and your fighting spirit advisedly and you take timely action. This is the reason why you are efficient in situations requiring courage, determination, swift responses and diplomacy, altogether. You do not fear confrontations but you never provoke them unnecessarily. You take advantage of your chances and you adjust your behaviour to concrete situations. You empirically handle events with relevance. The only danger is that you may be overzealous to seize any opportunity... even those that are not necessarily good in the long run. You should take the time to carefully consider the facts and their consequences. The swiftness of your reactions must remain an asset.

### ★☆☆☆☆ Mars inconjunction Saturn, orb -2° 45'

Why should you take action? And how? The surrounding world is not to be trusted. Past events have taught you to question simple situations and to intervene after thorough consideration. You are vulnerable to the traps of life, to confrontations and struggles. You may complicate your behaviour at will, often missing your target due to your self-censoring. Your interventions may lack spontaneity. You must overcome your doubts and acquire the certainty that you are able to handle realities and facts. If you make that effort, you can understand that there are many ways to make life simpler for yourself.



## Your Intellect and Your Communication Style

Your mind is calm and balanced; even though you assimilate slowly, your memory is remarkable. Your judgment is based on reflection and reason and draws on past experiences. Gigi Hadid, you are a good adviser, a reliable person whom people can confide in discreetly. You are full of good sense, cautious, methodical and disciplined and you are able to carry many good projects to a successful conclusion. You are very opinionated and determined in your actions. However, your tendency for intolerance and prejudices may offend your entourage. They wish that you exercised more flexibility instead of systematically refusing what cannot be immediately checked. You usually express yourself with a lot of charm and this is what allows you to get people to better accept your well-established habits.

Your intellect and your communication abilities are not directed towards any particular field, Gigi Hadid: indeed, you are by nature curious, lively, mobile and you generally adjust remarkably well to your surroundings.

Your versatile personality prompts you to get interested in many things, and it is not exaggerated to say that your intellect and your flexibility constitute strong assets for your life. People around you may rightly or wrongly perceive a kind of shallowness because of your adaptability and skilfulness - sometimes too opportunistic - that are your strong points.

### ★★★★★ Mercury square Mars, orb 4° 46'

This Mercury-Mars dissonance brings about impulsiveness into relationships and contacts. Your sense of controversy and criticism leads to blunders and thoughtless actions. Your verbal violence may harm the efficiency of your actions. You certainly display your views without circumlocution. Your straightforwardness would be commendable if it did not cause those blunders that spoil many situations. It is important that you learn to control your decisions, to coordinate your mental abilities and your fieriness, so as to fully express the quickness of your mind and of your action. Learn to count to ten before you say anything, as it is an excellent exercise for you!

### ★★★★★ Mercury inconjunction Jupiter, orb -1° 33'

You play with social norms and you scoff at them. Your morality is seldom questioned: you adopt the most rewarding behaviour, precisely the one that wins you your entourage's consideration. But you sometimes cheat. You are an opportunist and you act according to circumstances, particularly because your moral stand is only a superficial mask. You enjoy concealing your beliefs: life is a social game and you change its rules to suit your convenience. Your flexibility and your adaptation abilities are appreciated. However, it is important that you do not behave inconsistently. A stable and transparent course of conduct may help you avoid many pitfalls or delusions. Beware of words spoken thoughtlessly, of empty promises, and do stick to your indisputable cleverness.

### ★★★★★ Sun conjunction Mercury, orb 10° 09'

You know how to play with your image, how to give multiple representations of yourself. A precious asset: you are sensitive to other people's opinion and you adapt yourself to the audience. Of course, there is a "show" side in your manner that may prevent perfect cohesion. But that's the other side of the coin, for an extraordinary capacity to discover. This aspect translates into an acute sense of observation, an intense desire to learn and to bring everything to light. You strive to be informed in many circumstances, to understand the machinery of the world surrounding you, particularly regarding all human topics. And you will change according to that information and the knowledge gained. You have the chameleon's adaptation powers. And its vulnerability, as well.



★★★★★ Moon square Mercury, orb -7° 49'

The Moon suggests relaxation, whereas Mercury implies a discoverer's mind. They both make sense and each one requires special attention, as they are sometimes upsetting. This Moon-Mercury aspect is likely to bring about nervousness or instability. Nervousness stems from the multiplication of your spots of interest and the perpetual restlessness of your mind, which prevents relaxation and well being from settling in. The outside world constantly appeals to your attention and you shift from one issue to another, to the detriment of your tranquillity. Therefore, it is important that you find the balance between two antinomical attitudes: letting-go versus curiosity, tranquillity versus communication. The new persons you meet with are not necessarily trustworthy and there is no certainty that the contact is harmonious. It is important that you use both influences alternately.

## Your Goals, Motivations, Career, and Destiny

### Your Sun is posited in the 12th House

Gigi Hadid, your desire for accomplishment goes through a quite peculiar and original form, in the sense that you cannot resist the appeal of mystery and of withdrawing from events and situations. Your natural inclinations often prompt you to isolate yourself and to keep your private secrets intact. Indeed, it is during such privileged moments, when you are alone, that you can recharge your batteries and eventually blossom up.

Somewhere in you, there is a propensity for introversion, quietness and even a kind of isolation, whether they stem from a natural taste or from force of habit. However, beware... you are more secretive and more enigmatic than you are solitary. The reason is because a more or less important part of you (depending on the rest of your chart) is hidden and inaccessible to others.

You are sociable but you appreciate discretion. You often show a real dedication towards people and your compassion is one of the original facets of your personality, which is difficult to figure out. Your individuality is finally forgotten, almost negated in some cases: you are not interested in personal glory, which is all to your credit. You thrive through dedication, volunteer work, humanitarian action and alleviating the distress around you, since you perceive the weight of injustice more acutely than others.

Here is the paradox you are entangled in: the more you keep your distance from society, the more you are successful, at least regarding the things that strengthen you and make you evolve. Working in secret or in a withdrawn environment suits you very well: you are favoured if you are a writer, a painter, a medical practitioner, a psychiatrist or even a monk. You may also work in a penitentiary institution etc., as well as in any occupation conducive to quietness and contemplation. It does not imply that you cannot achieve fame, but when you do, a hidden part of you must express itself in one of the above areas, for your own good.

The Tradition indicates that with this configuration, your evolution goes through ordeals or obstacles that lead to a crisis and to a period of solitude so that you are on your own and, may be, that you have the time to ponder over what is really important in your life journey that seems at first sight so absurd and crazy. Do not worry, there is no such thing as a better predisposition. Everyone has one's own path and yours goes through an unpretentious authenticity, secrecy and the regeneration of your whole being during a few periods of your life, faraway from social whirls and false relations that are time wasting.

Your accomplishment may turn you into the power behind the throne. It may also take you into hidden topics people do not talk about, the supernatural, occultism, great mysteries etc.

Your destiny contains a mysterious part that no one suspects: you are far from being as simple as people might think.

Although nothing appears externally, you know to which extent you are remote from the idea that the majority of people have of you. You are interested in situations that allow you to hide or to withdraw at some periods of your life; it is often due to a series of ordeals. But beyond your reaction of defence while facing events, you have a true inclination for mystery and secret.

You must overcome the periods of isolation or of ordeals because the reward is proportional to what you are entitled to expect: a more rapid moral and spiritual evolution, wisdom, and a blooming personality. Some people may choose small roads in the countryside to unfold their life. You choose highways to earn your salvation and you avoid the socialite and false delusions inherent to an ordinary life in society. More than anyone, you are favoured, you are prompted to overcome pitfalls and to never let pessimism discourage you.

### **The ruler of your chart is in the 12th House**

The ruler of the Ascendant, also referred to as the chart ruler as explained in a previous chapter, is also posited in one of the twelve Houses of the chart. Just like the Sun in his House, the ruler of the Ascendant provides certain abilities, or it makes you appreciate more keenly certain areas of life.

The ruler of your Ascendant is in the same House as your Sun. This specific feature of your chart strengthens the Sun's characteristics previously delineated.

### **Aspects influencing your ambitions**

Regarding your destiny or your career, the following aspects of your natal chart allow to fine-tune what has just been said above:

★★★★☆ Neptune conjunction Midheaven, orb 3° 06'

Neptune is in conjunction with your Midheaven, Gigi Hadid. This aspect indicates that your vision of your career and your destiny is idealistic. You seem to adhere to some sort of poetic - and happy - fatality regarding huge changes or your progression towards success. As a consequence, achievements may be beyond your... will. If your professional or social circle fits your ideals, it is very likely that you experience brilliant successes in a sort of euphoria and a feeling of fusion with the world. Sometimes, this aspect indicates that your career is of a Neptunian nature, meaning that it is related to the sea, water, the world of ambiances (night-clubs, show-business, revels, etc.)

★★★☆☆ Sun square Uranus, orb 2° 3'

This Sun-Uranus dissonance indicates a dazzling will to be the centre of attention and to proclaim your specificity, by all means. This aspect belongs to the rebel and the revolutionary restive to all forms of authority and of model. To balance this interpretation, the strong need for autonomy bordering on frenzied individualism must be highlighted. You allow nothing or no one to hinder your chosen line of conduct. Obviously, your attitudes are inflexible. You prefer to continue to the bitter end, even when you

are wrong, rather than to be more open to people's ideas. Tyrannical attitudes often turn against the perpetrator... However, this configuration is a powerful agent for creativity, provided your hothead and extremist nature is kept under control.

★★★★★ Saturn sextile Midheaven, orb  $-1^{\circ} 49'$

Thanks to this soft aspect between Saturn and your Midheaven, your long-term efforts and your perseverance are rewarded, and you gradually climb up the stairs of success. Time is your ally as far as your career and social destiny are concerned. Carry on the good work, and rest assured that your seriousness and your obstinacy are appreciated. They are instrumental in your success, especially during the second part of your life.

★★★★★ Uranus conjunction Midheaven, orb  $7^{\circ} 58'$

Uranus is in conjunction with your Midheaven, Gigi Hadid. This very important aspect usually indicates a destiny which, in some rare life occurrences, takes most surprising twists. Like trans-Saturnian planets, out of the blue and beyond free will events occur by accident, as if they were caused by some sort of fatality. Thus, it is possible that your life changes its course completely and repeatedly, in a more than above average way, when transits and progressions activate your Uranus-Midheaven conjunction. Uranus stands for life upheavals, surprise, rebellion, freedom, and nonconformism. Whether it indicates inner needs or external events, which is the most frequent case, your destiny is very likely to be deeply disrupted, especially when transiting Uranus forms major aspects with your natal Midheaven (towards the ages of 21, 28, 42; 56, 63, and 84). Uranus' half-return (around the age of 42), is the most important one. It is also possible that your career or social destiny takes a stronger Uranian tone, with tight connections to modernity, space, astrology and out-of-the ordinary subjects, as well as physics, electricity, speed, etc.

★★★★★ Jupiter square Saturn, orb  $5^{\circ} 59'$

Jupiter and Saturn form a dissonance in your natal chart. It is far from being horrendous. This planetary configuration, which is deemed somewhere between the individual and collective characteristics, only indicates that your social integration may be delayed, or may encounter a few difficulties. Such slight delays or setbacks often have their origins in your own behaviour. Indeed, since Jupiter represents laws and public life, and Saturn, seriousness and perseverance, in many instances, you may become impatient, or even rebellious to any form of authority or legal constraints, to the extent that you cross the white line... When you face such circumstances, you must resign yourself to listening to reason and accept to wait for your turn, lest... your achievements are even more slowed down by your own haste.

★★★★★ Sun square Neptune, orb  $7^{\circ} 23'$

If this Sun-Neptune dissonance is not well integrated, it may bring about confusions and errors of judgment. It is the signature for Don Quixote in search of chimera, pursuing impossible dreams. Your intuitions may lead to an incorrect estimation of facts. Bohemian life is certainly pleasant. But it is often necessary to remain realistic, lest to be exposed to delusions. Carelessness and letting-go is not suitable. In order to properly integrate this aspect, you must control the possible drift of a wandering and fabulous sensitivity. This aspect favours poetic and romantic inspiration. But you must not let it rule your concrete actions. It is important to allow your intuitive capacities to be fully expressed while keeping a lucid mind, simultaneously.

★★★★★ Sun inconjunction Pluto, orb 2° 59'

You are dealing with both sides of the coin. People are mistaken when they think that they know you well, because the image you project does not necessarily depict what you really are. You may look like any given model, whereas you actually consider social values to be empty and childish. Deep down, you are an anti-establishment person and you do not belong to the world and its laws. Or, on the contrary, you may project a more marginalized image and make it a point of honour to literally stick to your aspirations' ethics. You do not know who you are really, and where you stand. You may choose some sort of marginality, the adherence to another realm and a different scale of values. Unless you choose a life that apparently lives up to the expectations of others. In that case, you preserve a corner for your private secrets, with no norms, no fashion concerns, relationships off the beaten tracks, passions very removed from conventions. Your attitudes may seem paradoxical as you shift from commitment to refusal and from involvement to withdrawal.

★★★★★ Moon semi-sextile Midheaven, orb -1° 32'

Your sensitivity and your emotions are in line with your goal and your ambitions, Gigi Hadid. You do not need to curb your temper lest other people have a wrong perception of you. Indeed, by being your true self, very simply, your social ascent will unfold naturally.

## Your Assets and Your Part of Joviality

This is the best possible position for the planet of Greater Fortune in your chart, Gigi Hadid! It offers a lot of human warmth (or it counterbalances introversion, if such propensity is indicated elsewhere in your chart), the taste for travels, optimism, vitality and an enterprising mind. You are mobile and you have a large vision. Wisdom starts with the ability to consider life from a different angle and to put all things into perspective!

Gigi Hadid, the planet of Greater Fortune in this house is a heaven-sent present. It indicates inheritances, intense and fulfilling sexuality as well as a strong and secret intuition. You may be content! Your feelings also are magnified and deep. Undeniably, you are very lucky with this position of Jupiter in your chart.

The planet Jupiter symbolizes expansion, broadness and generosity. Jupiter is associated with the functions of synthesis, enthusiasm and optimism. In your natal chart, his house position is more important than his sign position because, like Saturn, Uranus, Neptune and Pluto, he is a slow planet. Many people born in the same period have Jupiter in the same sign. This is the reason why the sign occupied here is less meaningful than when it is occupied by the so-called fast planets, i.e. the Sun, the Moon, Mercury, Venus and Mars. Therefore, some caution is to be exercised as you read what follows.

Jupiter in Sagittarius is very popular because he rules this sign, and, according to the Tradition, he is most potent and at his best. He endows you with all his natural qualities: enthusiasm, sense of humour, boldness, warmth, optimism, leadership, synthesizing mind, but also, propensity for travels or, symbolically, disposition for higher knowledge and matters such as spirituality, philosophy, politics or religion.

## Your Serious Side

The side effects of melancholy or isolation are the capacity to accumulate wisdom and the ability to step back. Therefore, if you really mean it, you have the possibility to make a better distinction between the concrete values that enable you to progress in actual life, and sugary daydreams that only bring some virtual pleasure and no real meaning.

As soon as you become a member of a community, and when you are surrounded with people or with friends, you instinctively protect yourself, and you even hide, Gigi Hadid. There is nothing you can do against this. In public, you do not show your real face, but in friendship, you are loyal and reliable.

You prefer quality to quantity, and your friends have every reason to be happy that they won your confidence because they know that they can rely on you under all circumstances. Your friends are usually much older and more seasoned than you.

The planet Saturn symbolizes contraction, effort, time, limitation and concentration. Saturn eliminates anything that is not authentic, sooner or later. It is impossible to cheat him as he gives an irresistible desire to form a coherent whole with oneself, in responsible and wise ways. He is the great purifier. He represents our limitations but also our truth. In your natal chart, the house position where Saturn is posited is more important than his sign position because, like Jupiter, Uranus, Neptune and Pluto, he is a slow planet. Many people born in the same period have Saturn in the same sign. This is the reason why the sign occupied here is less meaningful than when it is occupied by the so-called fast planets, i.e. the Sun, the Moon, Mercury, Venus and Mars. Therefore, some caution is to be exercised as you read what follows.

Saturn in Pisces limits your ability to feel other people's emotions or to profusely express your own feelings. For this reason, you are less vulnerable but at the same time, you can revel in isolation. On the other hand, you are genuine, you cannot be satisfied with chimeras and you remain far away from illusions but also... from dreams!

## A Few Special Points

### Your Uniqueness and Your Utopias

This is one of the most potent configurations. Unexpected disruptions of considerable intensity often occur on the factual plane. Embracing changes is the basis of the success of your destiny, which is very likely to include extreme variations, sometimes towards the most glorious heights, sometimes towards ordeals that you face with courage and determination, despite your unpreparedness.

Originality is certainly the context of your professional life or your destiny, in one way or another. Whether it is expressed through your very special area of expertise (high technology, space, aviation, astrology, television, etc.) or through the totally hectic nature of your progression (sudden changes of orientation), you are not able to plan what is coming next. Unforeseen events undertake to make a clean sweep of your certainties. This may offer many advantages if your state of mind is ready to approach life as a journey where your only freedom is to adjust in the best possible way to new emerging situations.

Most of the time, you are very independent, very keen to show your professional talents in a unique and



modern way. You are a kind of pioneer or rebel in your area, which allows you to better assert your genius.

### **Your Inspiration and Your Illusions**

This configuration indicates a significant probability that your professional destiny – even your general destiny – is linked to collective movements that are beyond you. They may constitute good opportunities to earn your marshal's baton.

Your certainties may be influenced by trends or by your osmosis with collective ideas, often because you are very sensitive to the "spirit of the times". The other side of the coin is that you may become only a representation of a collective ideal, or its victim, and be exposed to scandal or deception.

You have good predispositions for music, comedy and for anything that allows you to quench your thirst for emotions and fusion with the external world and with an audience.

### **Your Passion and Your Authority**

You have a natural strong authority as soon as you are with other people, and you tend to consider relationships as fights that allow you to display your might and your influence, insidiously but obviously, particularly for... the others!

Your contacts and your associations require so much emotional intensity that people who consider that relationships should be light and flowing may be frightened or disconcerted.

There is a strong possibility that you marry a powerful and secretive man with whom you form a whole unit and on whom you totally rely in confidence. Should it not be the case, it is very unlikely that he accepts that you retain a lot of personal freedom.

### **Your Isolated Planets**

In general, the ten planets of the chart are connected to other planets by major or minor astrological aspects. It is owing to those ties that the planets' energies can manifest in the chart owner's personality and play out within safeguards according to a specific tonality.

It seldom happens that in a natal chart, a planet is totally disconnected from the nine other planets.

Astrologers have observed that when such a case occurs, the person feels the energy of the unaspected planet in quite a singular way, very jerky and powerful at the same time. Thus, for instance, the famed astrologer Jean-Baptiste Morin de Villefranche wrote that "an unaspected planet heralds that something strange or extraordinary will take place regarding the meanings of the house in which the said planet is posited" (source : l'astrologie selon Morin).

Rules for detecting an unaspected planet: among all the testimonies that we have reviewed to this day, based on our experience, we tend to agree with American astrologer Janis Huntley who accepts seven



aspects, which involve the zodiacal twelve sections of 30 degrees. The aspects to be considered are the conjunction (0 degree, cooperation or tension), the semi-sextile (30 degrees), the sextile and the trine (60 and 120 degrees respectively, aspects of cooperation), the square and the opposition (90 and 180 degrees respectively, tensed aspects), and the quincunx (150 degrees, slightly tensed). In this detection, the chart's angles are not taken into account.

In any case, it is important to remember that an isolated planet clearly expresses its influence when it is a personal planet. Thus, when the Sun, the Moon, Mercury, Venus, or Mars is isolated, it is certain that the effects described by Jean-Baptiste Morin de Villefranche will become manifest. As for Jupiter, Saturn, Uranus, Neptune, and Pluto, one must be cautious because the volume of cases documented is not yet large enough.

Your chart has no isolated planet, and this particular case does not apply to you.

## Annex 1: Your Minor Dominants

The five following dominants are less significant than those described at the beginning of your report. They may not be strongly felt. In some cases, they add several minor details to the analysis of your character, but they are rather for curiosity purposes. It is not necessary to take them into account when you first read your portrait.

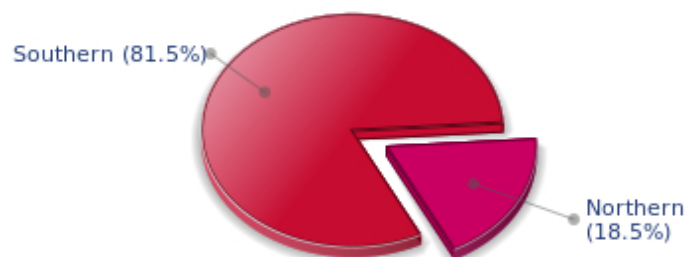
### Your Planetary Repartitions: Northern, Southern, Eastern and Western Hemispheres

The axis linking the 1st house's cuspid (the Ascendant) to the 7th house's cuspid - the Descendant - divides the zodiac into two bowls, a superior bowl, in the South, and an inferior bowl in the North. Quoting an expression by the famous American astrologer Rudhyar, the Southern part and the Northern part correspond to two functions: "being" and "doing". Other concepts are also associated with this North and South distribution, such as introversion - Northern hemisphere - and extraversion - Southern hemisphere - being or appearances, inner life or external life, reflection or action, dreaming one's life or living one's dreams, the abstract or the concrete, backstage or limelight.

This is not about determination but about personal inclination: thus, some people will be thrown into public life despite a prominent Northern hemisphere. If this happens, however, it will not be due to their will, their taste or their deep nature. Conversely, a prominent Southern hemisphere will not bring about a famous destiny to its owner, even if he tends to turn the spotlight on himself, or if he looks for a more active life. It is a matter of deep nature and natural inclination. Of course, none of the typologies is "superior" to another.

In your birth chart, Gigi Hadid, the ten main planets are distributed as follows:

### Your Northern and Southern Hemispheres



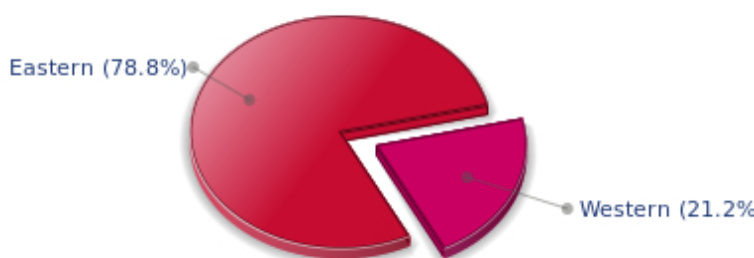
Gigi Hadid, the predominance of planets in the Southern hemisphere prompts you to take action, to draw attention on yourself, and to make your actions and what you have in mind visible to everyone. Sometimes, without giving a single thought to, and to the detriment of, a richer inner life and a deeper and wiser reflection. Action and communication are inevitable in your opinion and you tend to think that the only thing that matters is what is seen! This is not always true, and it is up to you to progress through the development of inner qualities such as meditation, solitude and imagination so as to become stronger.

The birth chart is divided into two other parts, Eastern and Western, by the axis linking the Midheaven to the Imum Coeli.

The Eastern part, on the Ascendant side, shows the person's ego, will, magnetism, and vitality, whereas the Western part, on the Descendant side, symbolizes other people, communication, relationships and their influence, as well as flexibility and adaptability.

Gigi Hadid, here is the planetary repartition in your Eastern and your Western hemispheres:

### Your Eastern and Western Hemisphere:



The predominance of planets in the Eastern hemisphere of your chart enables you, Gigi Hadid, to assert yourself and to rely on your determination: you know what you want and you have a tendency to take action and to decide with your personal goals as priorities, even if they can be in contradiction with what others think.

A definite asset... provided that you never make mistakes in your choices. You should pay more attention to your entourage in order to counterbalance your nature and to take advantage of your assets wisely. The danger is that you may be too authoritarian and not conciliating enough. Strong determination coupled with flexibility and acute sense of communication are qualities you should develop.

### Your Yin and Yang Polarity

The twelve signs are divided into two polarities, called active or passive, or sometimes masculine and feminine, positive and negative, Yang and Yin. This classification corresponds to two quite distinct tonalities, the first one bringing extraversion, action, self-confidence and dynamism, the second one, introversion, reactivity, reflection and caution. None is superior to the other, each group has its own assets and shortcomings. Odd signs - Aries, Gemini, Leo, Libra, Sagittarius and Aquarius - belong to the first group, whereas even signs - Taurus, Cancer, Virgo, Scorpio, Capricorn and Pisces - belong to the second group.

## Your Yin and Yang Polarity



According to the disposition and qualities of your planets and angles, you are rather influenced by Yin energy, the passive polarity, Gigi Hadid: you are quite introverted, imaginative and sometimes discreet, but you are a deep and wise person who is not content with just noisy and flashy things. At times, you doubt but you think that those who don't are a bit... thoughtless. Allow yourself to take more laid-back attitudes and put your reserve aside, because good equilibrium is always healthier.

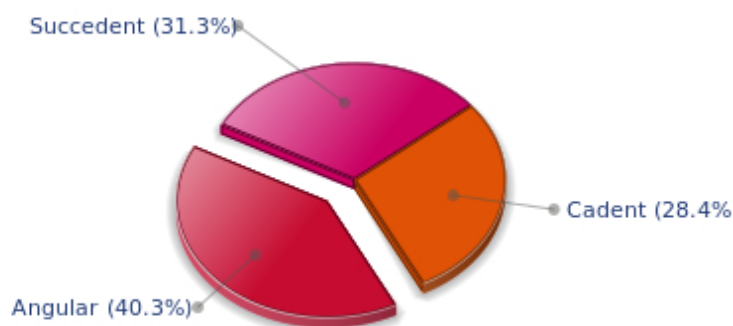
### Your Houses' Accentuations

Houses are split up into three groups: angular, succedent and cadent.

The first ones are the most important ones, the most "noticeable" and energetic houses. They are the 1st, 4th, 7th and 10th houses. Their cusps correspond to four famous angles: Ascendant for the 1st house, Imum Coeli for the 4th house, Descendant, opposite the Ascendant, for the 7th house and Midheaven for the 10th house, opposite the Imum Coeli.

Planets are evaluated according to a whole set of criteria that includes comprehensive Western astrology rules. At their turn, planets emphasize specific types of houses, signs, repartitions etc., as previously explained.

## Your Houses' Accentuations



Your angular houses, namely, the 1st, 4th, 7th and 10th houses, are very emphasized in your chart, Gigi Hadid: according to the Tradition, they are the strongest and most dynamic houses. Should the rest of your chart concur, angular houses suggest that you are an enterprising, energetic and assertive woman. Indeed, angular houses are said to generate impulsions and to give a powerful and domineering personality.

Unusual fates are often linked to a predominance of angular houses, but this is only a partial indication...

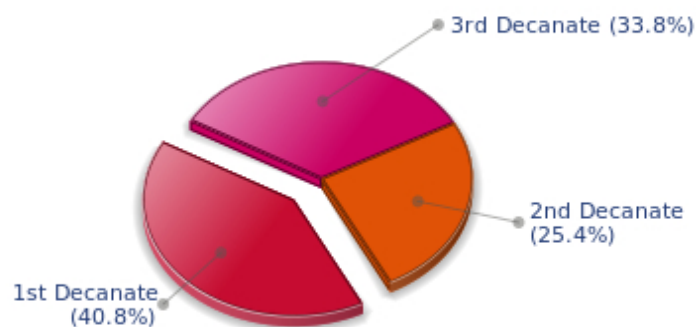
### Your Esoteric Decanates

Each sign contains 30 degrees and can be divided into three equal parts: the decanates. The Tradition indicates that specific meanings can be associated to each of the three decanates. Their sphere of activity is usually limited to the Sun sign, however, it is even more interesting to observe the distribution of all the planets in the chart to get an idea of the respective importance of the three decanates, which can complement the description of the personality.

These meanings must be considered with the greatest caution. Indeed, they are minor characteristics that can only underline other outstanding traits of character.

Traditionally, the first decanate highlights the characteristics of the sign where a planet is located. The two other decanates correspond to sub-dominant planets, depending on the nature of each sign. This system leads to a multiplication of meanings and it is impossible to have a clear understanding: here, we prefer to give only the meaning of one decanate in comparison with the other two, within the birth chart as a whole. Again, the greatest caution is needed with regard to this minor indication as it is not always reliable: it is not essential that you read these texts in the beginning. You can get back to them later on, once you have read more important interpretations

### Your Esoteric Decanates



The first decanate, which means the part between 0° and 10° of any zodiacal sign, prevails in your natal chart, Gigi Hadid: this decanate is traditionally linked to vitality and physical constitution, and may indicate that you efficiently express your concrete energy on the material and sensual planes.

## Annex 2: Karmic Study

The karmic theme is a good complement to the psychological portrait, or natal chart. This analysis is based on the positions of the Lunar Nodes, the Black Moon and the Part of Fortune: they are also called fictitious points and describe the spiritual purpose of your destiny. Because there is in all of us an experience and a quest, our life is an evolutionary journey... provided that we head towards the right direction, of course! Indian astrologers highly prize the Nodes axis (North Node and South Node). It is the Ariadne's thread that we are invited to follow. The Black Moon indicates the sector where we are most likely to transform or to transcend, whereas the Part of Fortune points out the area where we can easily express our specificity.

### The Lunar Nodes: a spiritual path

Lunar Nodes have their roots in the Indian tradition and they are based on a simple concept: each of us have a mission of their own, here on earth, a destiny, a course. According to the Indian philosophy, life is a school: the nodal axis describes our past experiences (South Node, our karma, our spiritual inheritance or our previous lives), and our aims on earth (North Node, our Dharma, the purpose of our current incarnation). This is the reason why the study of the lunar nodes is called "Karmic astrology". Here, we shall not step into hypothetical past lives. Wherever our current trends may come from, all that really matters is that we become aware of the purpose of our life, its finality and our dharma. We are likely to understand our life purpose around the age of 37, when the Lunar Nodes return to their natal position.

Your life's purpose is related to your disregard for material goods and dispossession. Whether or not you enjoy comfort, a financial or affective capital, someday, you question your assets and you start anew. Of course, you enjoy life's simple joys. The security granted by stable relationships allows you to cope with possible delusions. But life undertakes to remind you that nothing is eternal here below, the wheel keeps on turning and, at any time, one may irrevocably lose what one thought to possess forever. Paradoxically, ordeals and losses make you stronger: as time goes by, you feel freer, more detached from the values of this world and closer to the essential... The spiritual life can't be bothered with the prosperity sought after by ordinary mortals. As you give up the values that you once thought to be indispensable, you gain in terms of lucidity and, eventually, in terms of tranquillity. Your powers and your inner dimension will then impress many people: do not overdo it!

During the first part of your life, you manifested an acute sense of challenge, a taste for personal initiatives and an unfailing fighting spirit: these qualities prove helpful in handling any possible setback today. However, you must make an effort to accept your entourage and adopt more open and accommodating attitudes! Life teaches that you must become more sociable and develop the flexible behaviour that you lack. Do not play around with mavericks; It is important that you earn your close friends' affection and that you rely on their collaboration. You slowly become more aware of other people's reasons, of their desires and their concerns. Your destiny may be influenced by relationships. If you had a tendency to provoke people or events, now you have gained complementary qualities: diplomacy and human tact, cleverness in the art of reconciling opposite views. It is true that it required a huge personal effort!

### Lilith or the Dark Moon

The Black Moon is the spark of refusal and distance that is dormant in all of us. Depending on the sign where she is found in your chart, she highlights the desire to transform and to sublimate a part of your life. The Black Moon is unfathomable and mysterious. She gives a different dimension to the sector she



touches. Her manifestations are subtle; nonetheless, she is powerful, implacable, demanding to the extreme... The Black Moon is also called Lilith. She is the inner flame of your heroism and insubordination.

Your approach to comfort and pleasure is paradoxical: you deeply long for a realm where your senses and your desires can be fulfilled at will. However, you are so demanding that you may refuse the simple joys of life and you prefer an absolute quality of life... an absolute that is often inaccessible, but so thrilling!

Your refusals are irrevocable: you may show violence when the situation is stuck... When facts hamper your aspirations, when everything does not seem to start moving soon, you tend to force your ways through events, regardless of the price to be paid. Your strengths and your weaknesses stem from all that: you may exercise a misplaced extremism, claiming great causes, whereas order can be restored in the simplest of ways. However, better than anyone else, you know how to maintain the pressure whenever it is needed, when the desire for deep changes takes precedence over submission or abdication.

### **The Part of Fortune in House**

The Part of Fortune is a very ancient fictitious point that depends on the lunar phase at the time of birth. The astrological house tenanted is particularly strengthened. In your chart, the Part of Fortune is in the 11th house: anything that has a human nature catches your attention. Friends, ideals, great humanitarian causes... You have original ideas for the betterment of the world. You do not consider the Tradition – or Traditions – to be immutable and ossified. It is important that you work on a reform or an overhaul of existing institutions: although you do not turn into a revolutionary, you are sensitized to society or educational projects. With the help of your entourage, and because, better than anyone else, you can earn the consideration of your close friends, you will slowly transform your familiar surroundings... since you cannot change the world!

### **Retrograde Planets**

The karmic tradition insists on the issues related to the so-called retrograde planets. They are considered to be the inheritance of a past that was not well experienced, a sort of unfinished business. The interpretations of the retrogradation may seem negative or excessive to you. However, you may relate to a scenario that you have often and repeatedly experienced... as if you underwent several setbacks that all have the same cause. Until the day you become aware of it and you can free yourself from it! Through the slow integration of these planetary energies, you will be able to overcome your difficulties and to pay your karmic debt. Actually, each retrograde planet highlights an opportunity for evolution. Nothing can be achieved without the will to grow spiritually and to defeat your own demons.

With Jupiter retrograding on the day of your birth, the lesson is about grasping the opportunities that are offered to all of us but that some people take advantage of, while others don't. Persons who quickly adjust to circumstances are more likely to achieve their ambitions than those who need to be encouraged to take action. During your childhood, you may not have efficiently responded to life's concrete enticements, leaving other "luckier" people to achieve what you were dreaming of. You preferred to enjoy yourself, here and now, rather than to look for new paths of development or exploration. It is possible that you were not optimistic enough. Enterprising minds were alien to you... Later, you find out that, indeed, you give little importance to the credit of the frenzied expansion praised by the modern world. Your path is not oriented towards personal prestige. With subtlety, you integrate non-material values and you accept well the fact that you missed past opportunities.

Pluto retrograde suggests power issues and mishandled relations: for you, everything comes down to power struggles, submission and domination, Machiavellian manoeuvres, including within your couple... The results are complex behaviours and an obsession for the power to influence people. Yet, life teaches that you must simplify your relations and adopt more transparent attitudes and healthier desires... As years go by, you will tend towards more simplicity and you will slowly discover that human energy can, and must, be at the service of the good, or of well being, in compliance with our individual progression.

**N.B:** modern astrology attaches less and less importance to the principles of retrograding planets.

## Conclusion

A few remarks are needed here in order to allow you to fully take advantage of your astrological portrait: firstly, do not forget that a birth chart is also a photograph of the sky at birth and a structure that not only contains the personality's characteristics, but also its potential evolution.

We all know that, in real life, people begin to know themselves when they are in their forties, or even later. Likewise, several traits of character in a portrait may seem surprising: in most cases, it means that such features are not yet developed.

Some personalities reveal themselves late in life, whereas others are more precocious. It must be remembered that psychological structures are in a state of continuous evolution because they are influenced by unfolding events and gradual maturity. We can never underline strongly enough the "mobile" nature of the personality, throughout a lifetime.

On the other hand, it is difficult to discriminate what is "already present" at this moment in your life when you are reading your chart's interpretation, from what will appear later in the logic of your evolution: you must sort out all the pieces of information provided and, in most cases, you will see that your astrological portrait is helpful for your endeavours to know yourself better.

Finally, several readings of an astrological portrait are usually necessary in order to absorb all its different meanings and to evaluate the relevance of each character trait.

In any case, better self-knowledge obviously contributes to faster personal blossoming, and it is undoubtedly one of astrology's major roles: contributing to know oneself better, in order to improve more rapidly, to deal with one's weaknesses and to avoid its drawbacks, and to take advantage of one's assets as efficiently as possible.

---