



# François Hollande's Astrological Portrait





## François Hollande's Astrological Portrait



<b>Introduction</b>	<b>2</b>
<b>Your Planets, Houses, Aspects, and Natal Chart</b>	<b>4</b>
<b>Preamble</b>	<b>7</b>
<b>Your Planetary Repartitions</b>	<b>8</b>
<b>Your Dominant Modes and Elements</b>	<b>9</b>
<b>Your Dominants: Planets, Signs and Houses</b>	<b>10</b>
<b>Your Style, Behaviour, and Peculiarities</b>	<b>14</b>
<b>Your Sensitivity</b>	<b>17</b>
<b>Your Affectivity</b>	<b>18</b>
<b>The Way You Take Action and Your Sexuality</b>	<b>20</b>
<b>Your Intellect and Your Communication Style</b>	<b>21</b>
<b>Your Goals, Motivations, Career, and Destiny</b>	<b>22</b>
<b>Your Assets and Your Part of Joviality</b>	<b>24</b>
<b>Your Serious Side</b>	<b>25</b>
<b>A Few Special Points</b>	<b>25</b>
<b>Your Isolated Planets</b>	<b>26</b>
<b>Annex 1: Your Minor Dominants</b>	<b>28</b>
<b>Annex 2: Karmic Study</b>	<b>32</b>
<b>Conclusion</b>	<b>34</b>



# François Hollande's Astrological Portrait

## Introduction

To fully benefit from this portrait, we suggest that you read its introduction and its preamble carefully, and then that to take the time to soak up the interpretations of each chapter. Given the large number of texts, which mirrors the human being's complexity, you may need to go through the contents several times, so as to get a good grasp of their meaning and to know yourself better. This will reward your patience.

The purpose of this report is to describe your psychological portrait and to highlight the most fundamental features on the personal area. The report begins with the analysis of your planetary dominants and outlines your personality's general traits before going into further detail. Minor dominants are analysed at the end of Annex 1, for purposes of clarity. Your report then delineates the various facets of your personality:

In general, even when relationships are not involved, we express ourselves and we feel according to our character and our personal motivations: this is indicated by the Ascendant and the Sun sign which both give details on the way we function. They shed a tremendously important light which allows to figure out your personality. Here, we describe your Sun sign (your inner self), your Ascendant (your behaviour as seen by others), and the ruler of the Ascendant (interesting additional pieces of information about the style of your personality). These descriptions alone cover nearly a third or a half of your psychological signature, depending on your natal chart characteristics.

Then, we address your sensitivity, or in other words, the way you receive things and how you express your emotions ; it works as a constant filter for all your exchanges, even when it becomes a more secondary element in your amorous relationship, because at that moment, affectivity prevails. Sensitivity is the way you perceive things, it is your radar, your daily mood, and at the same time, it indicates how you react to your entourage, on a daily basis. It is what others immediately see of you. In the second paragraph, we explain in which areas of life your sensitivity and your emotions are strongest, therefore, where you are most vulnerable.

After this, it is your affectivity, the way you love and how you charm, that comes into play as soon as you fall in love: the first part indicates its basic structure or its main form. The second part describes the areas where it is best expressed and how you display it, according to your personality.

A third fundamental area deals with your mode of action and your sexuality: how you behave, how you manage to obtain what you want, what kind of desires you have. There are twelve possibilities, very

different from one another. The study discloses the specific one that applies to you. In the second paragraph, we explain in which life areas you may most efficiently take advantage of your capacity for action and for conquest.

Your ways of communicating and of thinking are obviously among the major elements that must be integrated into the delineation and the description of your personality. Indeed, they influence your general behaviour and may modify or enhance the image your project (for instance, extraversion may “compensate” a weak affectivity, but a huge number of cases are possible). An additional chapter indicates the favourite areas where you enjoy communicating, thinking and meeting with people.

Besides, we analyze an even more personal aspect that is important to define and understand what may occur within your couple: each of us have a centre of interest, a privileged manner to be fulfilled or to achieve our destiny; this main motivation is indicated by the positions of your Sun and your chart ruler in the astrological houses and we provide you with its detailed description.

A natal chart contains the potential for specific fulfilment and a whole range of assets, protections and qualities. How does the lucky factor manifest in your personality? In which area can you best exploit your qualities? The answers are precisely revealed to you in this chapter.

On the other hand, we all feel in us a part of vulnerability, doubts and fears. How does this part of solemnity or serious side play out? How is it possible to handle it in order to evolve and to get rid of useless elements? All this information is provided to you in these two paragraphs.

Then, you can discover three additional traits of your personality that must be considered as secondary ones. They deal with your predispositions, which means that they need to be triggered by external events because they are not influenced by your will; let's call it a part of fate. Please, bear in mind that your destiny can unfold only in accordance with what you are: therefore, even if they belong to your more unconscious self, these characteristics are parts of you, definitely.

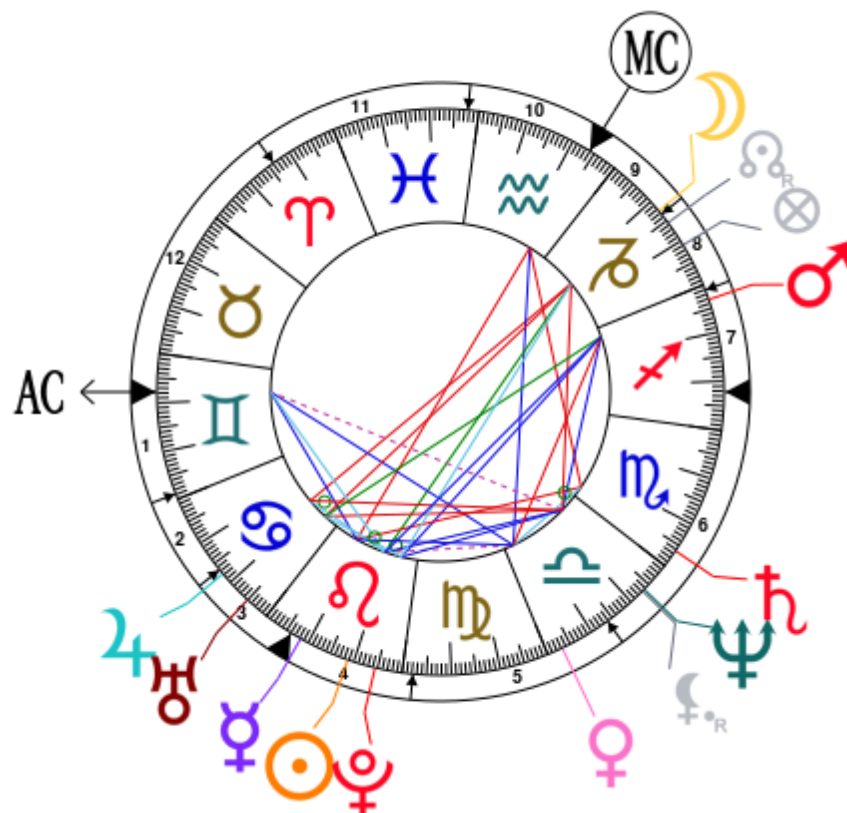
The karmic chart complements the psychological portrait or natal chart. It is based on the positions of the Lunar Nodes, the Black Moon, and the Part of Fortune. These elements of the chart, sometimes referred to as fictitious points, provide information about the spiritual meaning of your destiny. Owing to the fact that we all have in us acquired knowledge and the urge to go on a quest, our life is an evolutionary journey... However, these texts must be read with great caution: this is the reason why you will find this analysis in the Annex 2 of your report.

# Your Planets, Houses, Aspects, and Natal Chart

François Hollande, born August 12, 1954, at 12:10 AM, Rouen (Haute-Normandie), France [1.05E ; 49.26N ; 1E00]

Natal Planets				In House	Natal Houses (Placidus)		
☉ Sun	18°43'	♌ Leo		House 4	House 1	7°48'	♊ Gemini
☾ Moon	17°30'	♑ Capricorn		House 9	House 2	28°51'	♊ Gemini
☿ Mercury	8°17'	♌ Leo		House 4	House 3	16°39'	♋ Cancer
♀ Venus	3°12'	♎ Libra		House 5	House 4	6°05'	♌ Leo
♂ Mars	26°49'	♐ Sagittarius		House 7	House 5	2°14'	♍ Virgo
♃ Jupiter	17°42'	♋ Cancer		House 3	House 6	13°50'	♎ Libra
♄ Saturn	3°42'	♏ Scorpio		House 6	House 7	7°48'	♐ Sagittarius
♅ Uranus	24°57'	♋ Cancer		House 3	House 8	28°51'	♐ Sagittarius
♆ Neptune	23°40'	♎ Libra		House 6	House 9	16°39'	♑ Capricorn
♇ Pluto	24°29'	♌ Leo		House 4	House 10	6°05'	♒ Aquarius
♁ Node	14°28' R	♑ Capricorn		House 8	House 11	2°14'	♓ Pisces
♁ Lilith	23°12' R	♎ Libra		House 6	House 12	13°50'	♈ Aries
AS AS	7°48'	♊ Gemini					
MC MC	6°05'	♒ Aquarius					

In keeping with the common practice, we consider that a planet posited within 1 degree of the next house belongs to that house. We allow an orb of 2 degrees for the ASC and the MC.



## List of Your Active Planetary Aspects

Please find below the list of all the active inter-aspects which are interpreted in this report, in addition to your planets in sign, in house, and all your planetary dominants. Since the aspects between slow-moving planets are of a collective nature, they are not displayed, in compliance with our interpretation rules.

- ★☆☆☆☆ Sun inconjunction Moon, orb -1° 13'
- ☆☆☆☆☆ Sun conjunction Mercury, orb 10° 25'
- ★☆☆☆☆ Sun semi-square Venus, orb -0° 31'
- ☆☆☆☆☆ Sun trine Mars, orb 8° 05'
- ☆☆☆☆☆ Sun semi-sextile Jupiter, orb 1° 01'
- ☆☆☆☆☆ Sun sextile Neptune, orb 4° 56'
- ☆☆☆☆☆ Sun conjunction Pluto, orb 5° 45'
- ☆☆☆☆☆ Sun quintile Ascendant, orb -1° 05'
- ★★★★★ Moon opposite Jupiter, orb -0° 12'
- ★★☆☆☆ Moon opposite Uranus, orb -7° 26'
- ★☆☆☆☆ Moon square Neptune, orb -6° 09'
- ☆☆☆☆☆ Moon bi-quintile Pluto, orb -0° 59'
- ☆☆☆☆☆ Mercury sextile Venus, orb -5° 05'
- ★★☆☆☆ Mercury square Saturn, orb -4° 35'
- ☆☆☆☆☆ Mercury sextile Ascendant, orb 0° 29'
- ☆☆☆☆☆ Mercury opposite Midheaven, orb -2° 12'
- ★☆☆☆☆ Venus square Mars, orb -6° 22'
- ☆☆☆☆☆ Venus semi-sextile Saturn, orb 0° 29'
- ☆☆☆☆☆ Venus trine Ascendant, orb -4° 36'
- ☆☆☆☆☆ Venus trine Midheaven, orb 2° 52'
- ★☆☆☆☆ Mars inconjunction Uranus, orb 1° 52'
- ☆☆☆☆☆ Mars sextile Neptune, orb 3° 09'
- ☆☆☆☆☆ Mars trine Pluto, orb 2° 2'
- ★★☆☆☆ Saturn square Midheaven, orb 2° 22'
- ★☆☆☆☆ Neptune sesqui-quadrate Ascendant, orb 0° 51'

## Meaning of Stars

Stars indicate the strength of the aspects. Two solid coloured stars (there are half-stars also), mean that the aspect is powerful enough to be noticed at the first reading.

We strongly advise that you read the paragraphs displaying less than two stars later on, after you have absorbed the full import of the other texts.

The yellow colour indicates a soothing and conciliating aspect, and the red colour, a dynamic and tense aspect. The red aspects enable you to evolve, to take action, and to learn to turn your "weaknesses" into assets through your life experiences. The yellow aspects are innate strengths on which you rely in order

to grow better with the former...

## Preamble

When interpreting a natal chart, the best method is to start gradually from general features to specific ones. Thus, there is usually a plan to be followed, from the overall analysis of the chart and its structure, to the description of its different character traits.

In the first part, an overall analysis of the chart enables us to figure out the personality's main features and to emphasize several points that are confirmed or not in the detailed analysis: in any case, those general traits are taken into account. Human personality is an infinitely intricate entity and describing it is a complex task. Claiming to rapidly summarize it is illusory, although it does not mean that it is an impossible challenge. It is essential to read a natal chart several times in order to absorb all its different meanings and to grasp all this complexity. But the exercise is worthwhile.

In brief, a natal chart is composed of ten planets: two luminaries, the Sun and the Moon, three fast-moving or individual planets, Mercury, Venus and Mars, two slow-moving planets, Jupiter and Saturn, and three very slow-moving planets, Uranus, Neptune and Pluto. Additional secondary elements are: the Lunar Nodes, the Dark Moon or Lilith, Chiron and other minor objects. They are all posited on the Zodiac wheel consisting of twelve signs, from Aries to Pisces, and divided into twelve astrological houses.

The first step is to evaluate the importance of each planet. This is what we call identifying the dominant planets. This process obeys rules that depend on the astrologer's sensitivity and experience but it also has precise and steady bases: thus, we can take into account the parameters of a planet's activity (the number of active aspects a planet forms, the importance of each aspect according to its nature and its exactness), angularity parameters; (proximity to the four angles, Ascendant, Midheaven, Descendant and Imum Coeli or Nadir, all of them being evaluated numerically, according to the kind of angle and the planet-angle distance) and quality parameters (rulership, exaltation, exile and fall). Finally, other criteria such as the rulership of the Ascendant and the Midheaven etc. are important.

These different criteria allow a planet to be highlighted and lead to useful conclusions when interpreting the chart.

The overall chart analysis begins with the observation of three sorts of planetary distributions in the chart: Eastern or Western hemisphere, Northern or Southern hemisphere, and quadrants (North-eastern, North-western, South-eastern and South-western). These three distributions give a general tone in terms of introversion and extraversion, willpower, sociability, and behavioural predispositions.

Then, there are three additional distributions: elements (called triplicity since there are three groups of signs for each one) - Fire, Air, Earth and Water - corresponding to a character typology, modality (or quadruplicity with four groups of signs for each one) - Cardinal, Fixed and Mutable - and polarity (Yin and Yang).

There are three types of dominants: dominant planets, dominant signs and dominant houses. The novice thinks astrology means only "to be Aries" or sometimes, for example, "to be Aries Ascendant Virgo". It is actually far more complex. Although the Sun and the Ascendant alone may reveal a large part of the character - approximately a third or a half of your psychological signature, a person is neither "just the Sun" (called the sign) nor just "the first house" (the Ascendant). Thus, a particular planet's influence



may be significantly increased; a particular sign or house may contain a group of planets that will bring nuances and sometimes weaken the role of the Ascendant, of the Sun sign etc.

Lastly, there are two other criteria: accentuations (angular, succedent and cadent) which are a classification of astrological houses and types of decanates that are occupied (each sign is divided into three decanates of ten degrees each). They provide some additional informations.

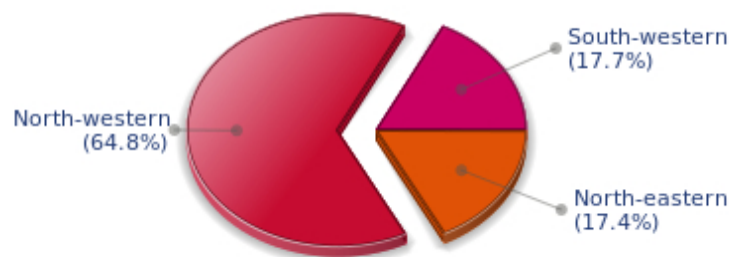
These general character traits must not be taken literally; they are, somehow, preparing for the chart reading. They allow to understand the second part of the analysis, which is more detailed and precise. It focuses on every area of the personality and provides a synthesis of all the above-mentioned parameters according to sound hierarchical rules.

As explained in the introduction of your Psychological Portrait report, minor dominants are analysed at the end of Annex 1, for purposes of clarity.

## Your Planetary Repartitions

Each quadrant is a combination of the four hemispheres of your birth chart and relates to a character typology. The Southern hemisphere – the top of your chart, around the Midheaven – is associated with extraversion, action, and public life, whereas the Northern hemisphere prompts to introversion, reflexion, and private life. The Eastern hemisphere – the left part, around the Ascendant – is linked to your ego and your willpower, whereas the Western hemisphere indicates how other people influence you, and how flexible you are when you make a decision.

### Your Four Quadrants

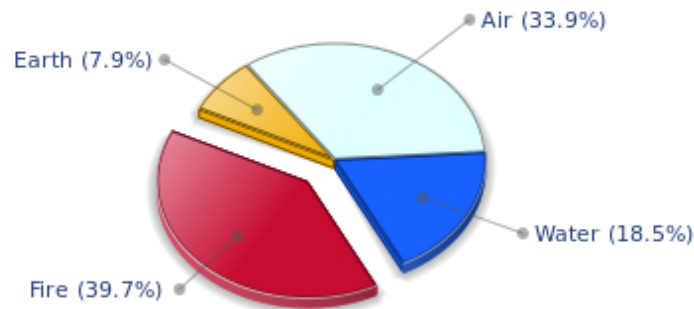


François Hollande, the nocturnal North-western quadrant, consisting of the 4th, 5th and 6th houses, prevails in your chart: this sector favours creativity, conception and some sort of specialization or training, with helpfulness and relations as strong components. You need others' cooperation in order to work properly, although you are not very expansive: creating, innovating and thinking are what matter most to you because this self-expression enriches you and totally satisfies you.

## Your Dominant Modes and Elements

François Hollande, here are the graphs of your Elements and Modes, based on planets' position and angles in the twelve signs:

### Your Four Elements



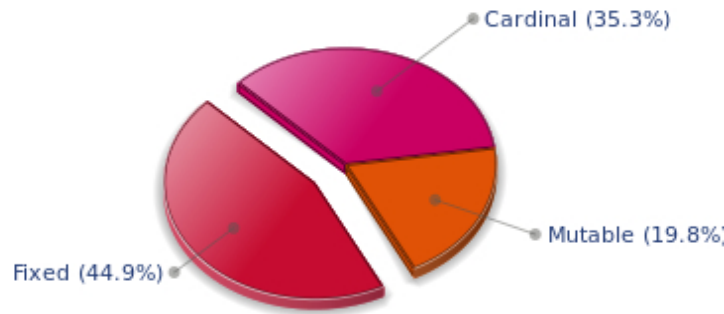
François Hollande, Fire is dominant in your natal chart and endows you with intuition, energy, courage, self-confidence, and enthusiasm! You are inclined to be passionate, you assert your willpower, you move forward, and come hell or high water, you achieve your dreams and your goals. The relative weakness of this element is the difficulty to step back or a kind of boldness that may prompt you to do foolish things.

Cheers for communication and mobility, François Hollande! The predominance of Air signs in your chart favours and amplifies your taste for relations and for all kinds of short trips, whether real (travels) or symbolic (new ideas, mind speculations). You gain in flexibility and adaptability what you lose in self-assertion or in pragmatism.

Earth qualities are under-represented in your chart, with only 7.87% instead of the average 25%. Deficiency in Earth may indicate that you have no interest in material and concrete values. It is likely that you live too much in your heart or in your mind, or even in your enthusiasm! The fact remains that you may end up in tricky situations, due to your lack of good sense or forethought: material life is unavoidable even if you are rather idealistic, dreamy, or easily content. You must tackle concrete life necessities, for fear of... being forced to cope with them, later, in much more unpleasant ways!

The twelve zodiacal signs are split up into three groups or modes, called quadruplicities, a learned word meaning only that these three groups include four signs. The Cardinal, Fixed and Mutable modes are more or less represented in your natal chart, depending on planets' positions and importance, and on angles in the twelve signs.

## Your Modes



The Fixed mode corresponds to a majority of elements in your chart, François Hollande, and represents the desire for security and durability: you are able to concretely appreciate a situation and its stability. You definitely prefer to play the role of a loyal, obstinate and hard-working person, rather than to try new and risky experiences - beware, however, not to confuse obstinacy with intransigence. You structure, cement, and strengthen everything you find on your way: it is your nature, although you are not especially interested in swiftness: slow and steady...

## Your Dominants: Planets, Signs and Houses

The issue of dominant planets has existed since the mists of time in astrology: how nice it would be if a person could be described with a few words and one or several planets that would represent their character, without having to analyse such elements as rulerships, angularities, houses, etc!

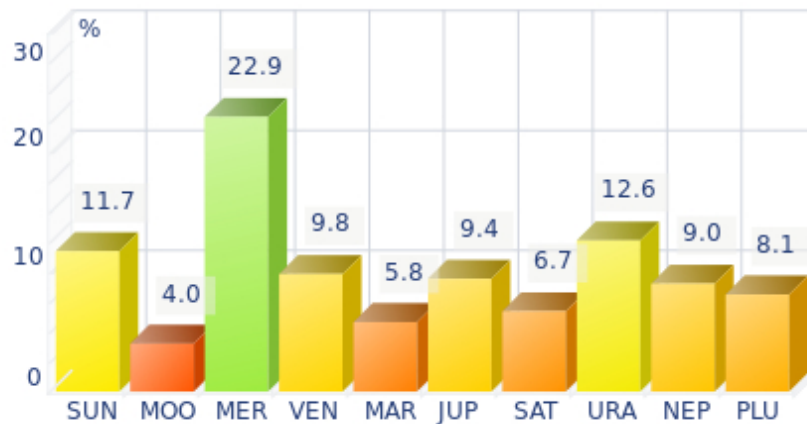
The ten planets - the Sun throughout Pluto - are a bit like ten characters in a role-play, each one has its own personality, its own way of acting, its own strengths and weaknesses. They actually represent a classification into ten distinct personalities, and astrologers have always tried to associate one or several dominant planets to a natal chart as well as dominant signs and houses.

Indeed, it is quite the same situation with signs and houses. If planets symbolize characters, signs represent hues - the mental, emotional and physical structures of an individual. The sign in which a planet is posited is like a character whose features are modified according to the place where he lives. In a chart, there are usually one, two or three highlighted signs that allow to rapidly describe its owner.

Regarding astrological houses, the principle is even simpler: the twelve houses correspond to twelve fields of life, and planets tenanted any given house increase that house's importance and highlight all relevant life departments: it may be marriage, work, friendship etc.

François Hollande, here is the evaluation diagramme for your planets:

## Your Dominant Planets



The three planets that are most highlighted in your chart are Mercury, Uranus and the Sun.

With Mercury among your dominant planets, you are certainly cerebral, nervous, swift, curious, quick-witted, and you love to communicate. Your psychological pattern is intellectual, all the more so since Mercury is important, with its whole set of assets but also of weaknesses, obviously.

Your sensitivity, emotions, and heart's impulses give precedence to thinking, which can lead people to believe that you are a playful and witty but heartless person, intellectualizing situations and juggling with words and numbers whilst ignoring human aspects of things. Of course, it is said that cats always land on their feet - this is your Mercurian strength and your trump card!

Your weakness lies in your nervousness, and you may miss your goal because of your "over-intellectualization" that may be detrimental to other kind of energies such as instinct, spontaneity, heart, sensitivity, etc.

Uranus is among your dominant planets: just like Neptune and Pluto, Uranian typology is less clearly defined than the so-called classical seven planets that are visible to the naked eye, from the Sun to Saturn. However, it is possible to associate your Uranian nature with a few clear characteristics: Uranus rhymes with independence, freedom, originality, or even rebelliousness and marginality, when things go wrong...

Uranus is Mercury's higher octave and as such, he borrows some of its traits of character; namely, a tendency to intellectualize situations and emotions with affective detachment, or at least jagged affectivity.

Therefore, you are certainly a passionate man who is on the lookout for any kind of action or revolutionary idea, and you are keen on new things. Uranians are never predictable, and it is especially when they are believed to be stable and well settled that... they change everything - their life, partner, and job! In fact, you are allergic to any kind of routine, although avoiding it must give way to many risks.

One of the dominant planets in your natal chart is the Sun. He symbolizes will, magnetism, sense of honour and dignity. You are a Solar being, and you often display charismatic and leadership qualities.

Your warmth and your persuasive power lead you far away from pettiness. You enjoy thinking big and, consequently, you move forward according to what you decide.

Your Solarian weakness may be related to the sin of pride or to excessive authority. The frontier between pride and vanity is tenuous: be careful not to overstep it and to keep the nobleness of heart that is part of your charm.

### Your Dominant Signs



In your natal chart, the three most important signs, delineated according to the above-mentioned criteria, are, in decreasing order of strength, Leo, Cancer and Gemini. They are often prominent because your Ascendant and your Sun are posited there. However, it is not always the case: it may be because they are occupied by a cluster of planets, by a planet near an angle other than the Midheaven and the Ascendant, or because two or three planets are very active and form numerous aspects from these signs. Therefore, you partly take on the three signs' characteristics, which are somehow superimposed on your natal chart, and all the more so if any of the signs in question is highlighted.

With Leo as a dominant sign, you naturally shine brightly. Your dignity, your sense of honour, and your generosity can almost turn you into a solar mythological hero, a knight or a lord from the ancient times. People may blame you for your selfishness, your pride or your somewhat loud authority, but if you are self-confident, kind-hearted and strong-willed, it surely makes up for your little flaws, as long as they remain moderate...

Cancer is one of your dominant signs and endows you with imagination and exceptionally shrewd sensitivity. Although suspicious at first sight - and even at second...- as soon as you get familiar with people and let them win your confidence, your golden heart eventually shows up, despite your discretion and your desire for security that make you return into your shell at the slightest alert! Actually, you are a poet and if you are sometimes blamed for your nostalgia and your laziness, it is because your intense inner life is at full throttle...

With Gemini as a dominant sign, your qualities include being lively, curious, mobile, clever, and flexible: you often make others dizzy, and you may come across as a dilettante - a bit inquisitive, shallow, and insensitive because you may be too intellectualizing. However, your natural curiosity, a nice quality, and your quick humour, allow you to demonstrate to everyone how much they may gain from your company, and that your apparent flightiness hides an appetite (particularly mental) for life, which itself conceals a

terrific charm!

### Your Dominant Houses



Houses 4, 3 and 6 are the most tenanted ones in your natal chart. To compute their strength, planets and angles are weighed according to various astrological criteria such as swiftness, activity, angularity, rulership etc. From the analysis of the most tenanted Houses, the Astrologer deduces the fields of activity that are most relevant to you, be it because of what you are experiencing, or what you may experience in the future, or because of your deep inner motivations.

With an important 4th house in your chart, your private life, your intimacy, as well as your family and home, play a fundamental role. Your security and your family unit, the one you come from, but also the one you set up when you get married and start a family - or even as a bachelor living alone in your sweet home - are necessary for you to blossom. According to the Tradition, your father may play an important role in your life.

As the 3rd house is one of the most important houses in your chart, communication plays a major role in your life or in your deep motivations: frequent short trips, open-mindedness - which may offset a lack of mutable signs for instance - listening, discussion, interest in learning, knowledge accumulation or long-term studies, etc., are all areas that greatly appeal to you and are part of your daily life.

Your 6th house is quite emphasized and indicates interest in work and daily occupations that take up a lot of your time: in analogy with Virgo, this house inclines towards perfectionism and training; somehow, you may be fulfilled through the process of being useful and investing your energy in your work. An environment appealing to you may be involved - your colleagues, for example - or a passion for one of these daily occupations. Medical positions or pets may play a role in your life; or ancillary love affairs too... These are a few possibilities indicated by an important 6th house.

## Your Style, Behaviour, and Peculiarities

What is commonly known as "sign" indicates the position of the Sun in the Zodiac. The Sun highlights all the characteristics of the sign he tenants. According to astrology traditional rules, these characteristics are all the more pure and exact when the Sun is strong in the sign, or when the sign is particularly highlighted within the chart. Here, we indicate the pure characteristics of the sign but you must bear in mind that they may only shed a light on a particular aspect of your personality. Indeed, the sole sign of the Sun, or of the Ascendant, can never describe an astrological chart because it depends on the degree of strength of the said sign in your chart.

Another important point must be underlined. Contrary to the Ascendant, which clearly describes your appearance, your vitality, your physical constitution, your spontaneous behaviour and the image you project, your Sun sign describes your inner self, which you may not completely be aware of, and which may emerge gradually as you mature: it is about your inner personality that you reveal only to the members of your entourage whom you trust. The Sun sign is likely to be the final form of your personality, once it has evolved in line with the energies of the other parts of your chart, the beginning of which is seen in the Ascendant, your external "bark".

The Ascendant is one of the major components of your natal chart. It is the zodiacal sign that rises in the East at the very moment of your birth. To calculate it, it is therefore necessary to know your exact time of birth.

It provides with a wealth of information on your personality. It is one of the key features that allows the analysis of several parts of you, such as your appearance, your character as it is initially perceived and your immediate behaviour. It describes the external aspect of your personality which you always display, but it also describes your physical constitution in the long-term, in other words, your health.

Please be aware that, in spite of the importance of the Ascendant, the accuracy of its description depends on how strongly highlighted it is in your natal chart. We use the entire set of astrological rules to assess the strength of the Ascendant. In most cases, the Ascendant is as revealing as your "sign", i.e., the sign where the Sun is posited at the time of birth.

## You were born under the sign of Leo and your Ascendant is in Gemini

Before broaching the details of the meaning of your Sun and your Ascendant, as a preamble, we offer a brief generic interpretation of their combination in your chart:

You have an extroverted and relaxed nature which may border on inconsideration. Your slickness is terrific. Both Leo and Gemini are open to the people surrounding them, they tend to impose their presence and meddle in everything. It is easy to imagine you making as many contacts as you can, bustling about here and there, and avidly devouring all kinds of knowledge with intellectual detachment or nervousness. You keep your leonine warmth for your friends and relatives, and you treat them with magnanimity and pride. People who do not know you well perceive only your communicative and playful facet. Sometimes, you do the splits between your objectives, which are necessarily noble, and the superficial and natural polyvalence of your facade. You are highly appreciated for your humour and your theatricality, and also because you know very well how to look your best. In a word, one never gets bored

with you!

### **You were born with the Sun in Leo**

Psychologically speaking, your nature is powerful and self-assured. You are a leader whose strength and nobleness naturally arouse your entourage's respect and adherence and your legitimacy is unquestioned. Your sense of commandment, the honour your person constantly exudes, your prestige and your charisma is a whole which puts you into the spotlight wherever you go.

As you are born under this sign, you are proud, determined, wilful, loyal, solemn, generous, ambitious, courageous, heroic, full of vitality, creative, confident, seductive, happy, daring, proud, majestic, honest, magnanimous, charismatic, responsible, noble, brilliant, radiant, dramatic, affectionate, full of humour, demonstrative, swaggering and self-confident. You can also be domineering, conceited, touchy, authoritarian, stubborn, intolerant, self-centered, irascible, violent, and nonchalant.

In love, Sir, you are very demanding. You are a powerful and loyal lover. Your partner must be the most beautiful and the most brilliant person and she must make you feel that she admires you. In such a case, your generosity has no limit and you give your love without reservation, with nobleness, liberalities and luxury. You set up a stable and brilliant home where children have the essential part.

The main danger is that you value trust to the extent that you grant it generously but too hastily: if you happen to find out that your trust is misplaced, the whole world around you crumbles and the relationship is forever damaged. In this regard, you are cut-and-dried and you feel so hurt and humiliated that you seldom can forgive.

Another similar danger comes from the fact that your expectations are very high and it is very unlikely that real life offers such unconditional and lasting love: for this reason, it is not unusual that you never marry, all the more so because your self-centered character is not prone to self-questioning...

### **Your Ascendant is in Gemini**

Your mobility is such that you are in every place where you are not expected. You spend lots of time asking questions and... answering them. Your curiosity and your quick-wittedness are insatiable. Your mind is in constant turmoil, hopping from one topic to another, solving problems, accumulating anecdotes and knowledge within a short range of time. Your mobility is mostly mental, it takes you afar and turns your daily life into a mosaic of intense and pleasant moments that are not necessarily related to one another...

As you are born under this sign, you are nervous, expressive, lively and adaptable, with a quick mind and a good sense of humour. You are bubbling, playful, sociable, clever, curious, whimsical, independent, intellectual, flexible, ingenious, fanciful, imaginative, charming, cerebral, and you are into everything. You may also be whimsical, unfocused, quirky, superficial, indiscreet, opportunist, unmindful, selfish, sarcastic or mercurial.

in love, Sir, you increase the number of your love affairs, probably because you do not want to give up your freedom too quickly. You are cerebral to the extent that games of seduction remain... a real game, where feelings and carnal pleasures are merely present.



Paradoxically, you are very charming and attractive but you are more interested in the game itself. Indeed, thrills of verbal joust, fun, the pleasure to communicate over and over again, remain the centres of your concerns.

You clearly prefer to be a bachelor because you appreciate its hustle and bustle: outings, exciting parties or a wide range of encounters etc. However, when you meet with your soul mate, you turn into a pleasant and charming partner, although you may not be around too often!

### **The ruler of your chart is in Leo**

The ruler of the Ascendant, also referred to as the chart ruler, brings a few interesting nuances to the meanings provided by the Sun and the Ascendant. The sign in which the ruler of the Ascendant is posited fine-tunes the style of personality described by the Sun and the Ascendant. It may strengthen it if the sign is identical to either of them.

The ruler of your Ascendant is in the same sign as your Sun. This specific feature means that the Sun's characteristics in sign previously delineated are strengthened.

### **Aspects to your Ascendant**

Several planets form an aspect with your Ascendant, François Hollande. Therefore, in their specific way, they modify your behaviour and your personality, which do not take on the pure characteristics of your Gemini Ascendant only, but which are a blend of its characteristics with those of the said aspects.

#### ★★★★★ Mercury sextile Ascendant, orb 0° 29'

You are endowed with quite good adaptation capacities, François Hollande. Thanks to Mercury, your behaviour matches your intellectual concepts, or your style of communication, which is quite an effortless one.

#### ★★★★★ Venus trine Ascendant, orb -4° 36'

Thanks to Venus, François Hollande, your behaviour is in harmony with your affective life, and you need not make any special effort in order to express your feelings in a natural way and without arousing people's criticisms. This asset enhances your natural easiness and charm, which is definitely not unpleasant!

#### ★☆☆☆☆ Neptune sesqui-quadrate Ascendant, orb 0° 51'

Neptune is in dissonance with your Ascendant, François Hollande. You may have difficulties in controlling your emotions, and you tend to hesitate about the behaviour to adopt in society. In some circumstances, you distrust everyone, yourself and other people, without knowing the reason why. Keep your feet on the ground and do not allow your imagination to carry you too far away from sheer reality! No one nurtures bad intentions towards you. This is something you must realise if you do not want to get worked up about... nothing.

#### ★★★★★ Sun quintile Ascendant, orb -1° 05'

Your will is fuelled by a strong energy, François Hollande. It enables you to take quick decisions which totally match your personal ethics. Thanks to this good harmony between the Sun and your Ascendant, you feel rather good about yourself, and your inner self perfectly matches the image you are willing to show!

## Your Sensitivity

Your sensitivity is withdrawn, François Hollande: more than anyone, you tend to lock yourself in your ivory tower, as you are aware of a kind of superiority that may be real, though overrated. Your moods are not perceptible because you control them with a tight fist. It is difficult to know if you are happy or upset because you show nothing. You avoid situations which compel you to reveal your emotions because you are not demonstrative. Please, be aware that it is not your amorous behaviour that is being analyzed, but the daily expression of your sensitivity. You dread the crowd and you need calm, and even solitude, to feel comfortable. You are well-equipped to remain balanced in all circumstances, but it may prove beneficial if you progressively take a relaxed attitude and show more dedication, as you are worth it; it is easier for you to exteriorize your feelings when your projects or your ambitions justify that you do so. You do not practice gratuitous outpourings, particularly when you are with a group, because you are afraid to open up, as if you were on the defensive, without any reason most of the times.

Your emotions, François Hollande, prompt you to experiment what is faraway and foreign to your roots. You are indeed attracted by the unknown or by what is different from you, and it is mainly abroad that you realize that your emotions are exalted or that your popularity is enhanced. Besides, it is likely that your wife is a foreigner or at least, that you meet with her abroad.

Women may play an important role for your philosophical or moral training, or for your quest of knowledge and expanded horizons.

### ★★★★★ Moon opposite Jupiter, orb -0° 12'

When this aspect is not well integrated, there is a tendency to conceal your true nature and to cheat on your true self. Appearance, emphasis and games hide the essence of your aspirations and may trouble your intimate life. Despite your apparent joviality, it is often difficult for you to live in conformity with your inner demands. Actually, it is difficult for you to reconcile your social life with your private life. The former excludes the latter. To properly integrate this aspect, you must learn to harmonize your external attitudes (social and professional ones) with your daily rhythms. It implies that, when you are in a trustworthy situation such as your family or your home, you accept to behave differently from when you are in a larger context, exposed to social stress. You must neither ignore them, nor should you favour them.

### ★★★★★ Moon opposite Uranus, orb -7° 26'

The Moon and Uranus intrinsically share little in common: they get along as well as fire and water! It is difficult for you to reconcile your desire for well being and intimacy with your destiny's dazzling passions and thunderbolts. You may feel that your intimate and family realm hampers your freedom. There is a potential for crises, explosions or splits. The desire for independence does not get on well with security concerns. There may be strong temptations endangering your very life foundations and you may embark upon a liberating and personal adventure. However, you fear rash decisions. Your need for security may temper your impulses and put a brake on your individualistic aspirations. To harmonize these tendencies within your intimate life, you must leave yourself enough room for personal expression or for an activity of your own. Otherwise, as days go by, built-up tensions may jeopardize the quiet course of your life.

### ★★★★★ Moon square Neptune, orb -6° 09'

This Moon-Neptune dissonance wonderfully turns on the poetic soul, the exhilaration of feelings and dreams... and disturbs your practical life, as well as the management of contingencies. You do not lack inspiration but your reasons of living may be beyond your entourage's understanding! Bohemian life is

pleasant but it is probable that you experience muddled situations. Your aims are noble and your intentions are very good. But you may not have the will to turn them into reality. It is important that you are wary of artificial paradises: escaping in the imaginary is not necessarily the best solution for problem solving. You are in search of an inaccessible tranquillity and you tend to procrastinate chores. Nevertheless, facts remain present and you may see that non-interventionism can only increase your difficulties. You must put an end to this vicious let-go circle. This does not imply that you have to forsake your dreams or to repress your very rich sensitivity.

★★★★★ Sun inconjunction Moon, orb -1° 13'

In your chart, two polarities are clearly opposing - or complementing – each other: on the one hand, solar values, the image you project and the models you follow. On the other hand, lunar values, moments of letting-go and well being through casualness. When you commit yourself in a project, it is often to the detriment of your peace of mind. Conversely, you completely feel that you are your true self only when you are no more under the scrutiny of the outside world. Therefore, you separate your social and professional activities from your private life and you seldom match the requirements of the former with those of the latter. It may be a hurdle, a fundamental anxiety. It may also be an obvious asset, when it is well integrated: in that case, you succeed in assigning to yourself, and in fulfilling, objectives that are not necessarily in line with your intimate natural demands, which are preserved and separated from your intentions, your ambitions and your expectations. Thus, a strong will can turn this Sun-Moon hard aspect into a rich instrument for creativity. A shadow zone, or uncertainty, still remains: on the affective plane, you are very sensitive. May be too much, to the extent that you become vulnerable in many circumstances. Because in different periods of your life, your landmarks (solar) and your intimate balance (lunar) will be simultaneously challenged.

★★★★★ Moon bi-quintile Pluto, orb -0° 59'

You are a riddle for people... and for yourself. This harmonious Moon-Pluto aspect arouses your desire to understand and to express elements hidden in your unconsciousness. You are interested in the occult, in laws that rule beings and things in the dark. You like to pull strings and to manipulate situations without people's knowledge in order to remain mysterious. You feel fine when you are not in the limelight, but you intervene in the dark, with subtlety. Your intimate behaviour reveals the distance that you strive to keep in order to protect your inner life. You gladly cultivate the angel of the bizarre, even in your life habits and in your daily rhythms.

## Your Affectivity

In your chart, the Sun is in Leo and Venus, in Libra. In many regards, the signs of Leo and Libra are complementary. The touchiness of your Sun sign is offset by the adaptability and the sociability of Venus in Libra. The former responds to power struggles (Leo), and wants to keep his territory. The latter, by principle open to any enriching relationship (Venus in Libra), indulges in a few renunciations. These signs are complementary but also opposite: your attitudes may be paradoxical. Although your desires for harmony prompt you to cautiously avoid conflicts, your touchy mind sometimes provokes them. Or conversely, you let yourself be charmed and you give in on major issues... only to later regret your excessive flexibility. More than other people, you are sensitive to the esteem you are granted, to praise (which is very legitimate), to flattery (which is less legitimate). Your assets? Your capacity to impose a discreet charm and to gently emphasize your qualities. Your ideal is to be noticed: you manage to be recognized and to draw attention. Even if it means, once in a while, that you have to compromise with

the trend of the times, with fashions and prevailing tendencies. A mild sin rather than a vice, as long as it does not swell into a caricature.

François Hollande, it is impossible to hide it: to love, to be loved and to please, all these activities are at the centre of your life. Because you loathe solitude, you are constantly looking for company, and if possible, for an amorous company. It does not mean that you are full of passion all the time: you are refined, delicate and charming and you skilfully make use of customs with moderation and balance, without losing sight of your personal interests. You are ready to adjust and to compromise in all circumstances. You want to love and to remain integrated in your society: love gives precedence to propriety, which is fundamental to you. You are particularly gifted for this game of refined courtesy and politeness where appearances are at least as important as contents; you are able to show what you feel like showing and you achieve your ends with elegance, gentleness and goodness. These are precisely your main assets.

François Hollande, your Venus has a natural affinity with this house. She feels very comfortable and she gives her best in terms of intensity of feelings, artistic creativity, inclination for leisure, entertainment, fine arts and music gifts and even, the capacity to easily communicate with children. With Venus in this house, more than in any other position, the affectivity is increased and endows you with an active and enterprising attitude, in this area of life. Creativity is associated with the 5th house and Venus here allows you to blend pleasure and motivation, not only in the field of artistic creation and entertainment, but also in love, where you are prompted to fearlessly create or to actively develop romantic relationships with the elected person. Besides, you are particularly at your best here, more ready to extend extreme kindness, warmth or seduction than in any other of your daily activities. However, the danger with this position is to fall prey of your own great ability to please, to seduce or to enjoy yourself, be it through romantic dissipation or through sheer pleasure to shine.

★★★★★ Sun semi-square Venus, orb -0° 31'

The Sun and Venus form a mild dissonance in your natal chart. There is nothing very serious to worry about. There is only a small gap between what you really want on the one hand, and your natural need to charm and the warmth you display on the other hand. Thus, will and affectivity are slightly out of phase, but it is most likely that you are the only one who feels it. This is a quite trivial characteristic, and you probably do not have to correct it, since it is so mild.

★★★★★ Venus square Mars, orb -6° 22'

This Venus-Mars aspect indicates a sensitivity all on edge and an impulsive character. Emotions and heart impulses cause a marked tension. Life is an affective battlefield. Love is omnipresent but often fragile: impulsiveness reigns over the realm of feelings. The object of desire may become irresistible and implacable, or the sense of confrontations prevents affective tranquillity. However, the richness of your emotional responses is to be noted: you are more inclined than others to be guided by amorous fevers and you live intense passionate experiences. Your overwhelming impressionability must be contained. Romantic people seldom enjoy tranquillity!

★★★★★ Venus semi-sextile Saturn, orb 0° 29'

You favour deep feelings and a sincere affective life. In love, you are not content with shams or uncertain compromises. Your couple's relationship is based on mutual trust. You strive to build a lasting link, a true love that complies with your aspirations and your heart of hearts. This harmonious Venus-Saturn aspect indicates wisdom. Inexpressible truth is preferred to appearances. A love affair is an adventure,

above all. Discovering the other one, step by step... any relationship takes a fundamental dimension right away. It is relevant to mention a little puff of romanticism and a passionate nature, although quite modest and reserved. You do not commit yourself thoughtlessly! This is a major asset for long lasting love. You are able to question your affective behaviour and to adjust to your significant other. You handle crises quite well and you overcome all the difficulties inherent to amorous rapports.

★★★★★ Mercury sextile Venus, orb -5° 05'

This aspect sensitizes you to games of seduction. You like to multiply romantic undertakings, you invent new reasons to seduce or to be seduced. Although your romantic life is not a model of stability, it is full of discoveries, varied emotions, both sensual and cerebral. You know how to earn your entourage's liking through your acute sensitivity. You play around with feelings, with relationships and with love... Mercury and Venus commonly share the capacity to sensitize to human topics. Your receptivity towards others is high. Your broad-mindedness goes hand in hand with your heart's generosity. You pay particular attention to the way people look at you and the effect you make when you meet or exchange with someone. Actually, you expect a lot from others: acknowledgement of your qualities, as well as esteem and consideration. You may also be touchy beyond what you may give to think. In many instances, relationship games may turn out to be more serious than expected.

## The Way You Take Action and Your Sexuality

François Hollande, you are a real Goliath and you often excel in sport; your thirst for conquests prompts you to constantly launch new challenges. The enthusiasm you put in your undertakings is perfectly well supported by your moral concepts and an idealism compatible with the values of the society you live in. You are pragmatic, enterprising and sometimes, naive. You do not pay attention to details and you launch various great adventurous projects that are all doomed to success. In a few rare cases, you can funnel your huge energy into more philosophical, even spiritual or religious enterprises, where your entire fieriness works wonders. On the sexual plane, your ardour and your spontaneity are your main assets. The danger is that you may spread yourself too thin in the sense that you may forget about faithfulness, particularly during the extensive faraway travels you are so fond of.

You have a tendency to think relationships in terms of a duel, where one of the partners must hold sway over the other one, François Hollande. It may be disturbing, but you are satisfied because you know that your strong natural authority enables you to be in the domineering, and not in the dominated position!

Therefore, you excel in all activities having an important relationship component, or with some form of rivalry, authority, or fighting: a critical and uncompromising presenter, a prosecutor, a salesperson responsible for canvassing (although it may be double-edged), an attorney (but not to the defence, of course) etc.

You appreciate people who have the energy to take decisions. For you, in the end, to take action means to confront others, for worse, but hopefully, very often, for better.

★★★★★ Mars trine Pluto, orb 2° 2'

You have a very personal way of taking action and of experiencing confrontations and struggles. The laws of the world are subtle, often with complex and hidden mechanisms. For these reasons, you prefer to act behind the scenes rather than openly. You manage your daily life in a distant and subtle fashion

while you try to understand the logic underlying observed facts. You may also provoke events although you act as if you were not concerned. Your interventions will be as efficient as they are discreet. You may secretly transform your life and you live through the inexpressible motivations that connect you with the invisible realm. Things, which cannot be formulated, must be experimented and felt. You test experiences that your entourage find uninteresting and meaningless.

★★★★★ Mars sextile Neptune, orb 3° 09'

This harmonious Mars-Neptune aspect is a signature for the missionary or the inspired activist. You are guided by an irresistible and implacable ideal. Exaltation may border on sacrifice for the sake of the noble or rebellious causes that inspire your struggles and your actions. Far from intellectual speculations, you need to live through your passions, to take action and to let yourself be carried away by a mission, an ideal or sometimes, an illusion. Indeed, you may be a Don Quixote fighting windmills, dedicating all your energy to an indefensible or a fanciful cause. More often than not, your commitments are courageous, even heroic. And the faith you display turns perilous enterprises into feasible projects. You can successfully implement actions that are considered doomed to failure by others.

★★★★★ Mars inconjunction Uranus, orb 1° 52'

This Uranus-Mars dissonance indicates frequent commotions. Your actions may be foolhardy and thoughtless. You may not control your temper and you let impulsiveness take over logics. This brings about drastic, whimsical or untimely decisions. There is no monotony in your life: thunders and tyrannical behaviour are on the agenda! Your fighting spirit certainly allows you to cope with life hardships. Nevertheless, beware of damages. As one wants to act as a hero, one can make mistakes. Because forces are overestimated or because inflexibility forbids compromise solutions. Therefore, it is important to balance your decisions and to avoid solutions that are as final as inappropriate.

★★★★★ Sun trine Mars, orb 8° 05'

This planetary Sun-Mars aspect reinforces courage, determination and energy. The need for action is obvious. Whatever your will designs is implemented with fieriness, despite all oppositions. You are decisive and wilful, even foolhardy. Your behaviour may be heroic: you know how to face adversity, to stand for your rights and your decisions, regardless of the confrontations you may have to cope with. The only danger may be that you overestimate your chances and your strength. But your audacity turns out to be rewarding, more often than not.

## Your Intellect and Your Communication Style

Your intellectual and nervous energy is considerable, François Hollande, with good concentration abilities and a strong determination. You have plenty of planning and organization skills and enthusiasm. Your helpfulness is deep and you never hesitate to solve other people's problems. You are thought of as a reliable person and you enjoy it very much. You believe in your own capacities and you tend to speak with a dramatic pomposity because you want to attract attention. People who do not share your opinion are in trouble! Your determination is strongest and you may show stubbornness and inflexibility because you do not easily accept it when your ideas or your actions are criticized. Some people believe that you assert yourself in an authoritarian and condescending way, but you are not aware of it and therefore, you keep on thinking that you are right.

It is usually in the private sphere that you can communicate and think for your best interests, François Hollande. Your family is very important to you, and your intellectual interests incline you towards real estate matters, asset management, family business, etc.

You may also work at home, and in any case, you are generally more outgoing when you are in a safe and private environment. When you are outside, you come across as unobtrusive, either because you don't pay much attention to events that are not directly related to you, or because you are just shy and on the defensive when it comes to worldly things or public domain.

★★★★★ Mercury square Saturn, orb  $-4^{\circ} 35'$

This Mercury-Saturn dissonance does not allow for simple and spontaneous relations. Your vision of the world is complex. You are sensitive to the fragileness of human relations and you are doubtful of transparent situations. You need to look for hypothetical calculations and you suspect that unclear reasons are underlying beneath dialogues and encounters. Your sociability is limited. You are a loner because you dread relationships and you trust very few people among your close friends. You ask yourself more questions than you can find answers! Therefore, you are on the look out, troubled by the unknown. Everything is subjected to your questionings. It seems difficult to find certainties and to be satisfied with commonplaces that cannot soothe your doubting mind. The forte of this aspect is that it brings about undisputable capacities for discernment. Although your lucidity may hinder your relations, it also grants a lasting protection against gullibility. By nature, you belong to the category of the sceptics!

★★★★★ Sun conjunction Mercury, orb  $10^{\circ} 25'$

You know how to play with your image, how to give multiple representations of yourself. A precious asset: you are sensitive to other people's opinion and you adapt yourself to the audience. Of course, there is a "show" side in your manner that may prevent perfect cohesion. But that's the other side of the coin, for an extraordinary capacity to discover. This aspect translates into an acute sense of observation, an intense desire to learn and to bring everything to light. You strive to be informed in many circumstances, to understand the machinery of the world surrounding you, particularly regarding all human topics. And you will change according to that information and the knowledge gained. You have the chameleon's adaptation powers. And its vulnerability, as well.

## Your Goals, Motivations, Career, and Destiny

### Your Sun is posited in the 4th House

Unless salient factors indicate otherwise, François Hollande, your nature is not very extroverted and your tendency is to keep to yourself emotions that may run very deep. Your will prompts you to create some sort of security, or cocoon, around you.

You are deeply attached to your family and to your initial home. You need this cosy and warm atmosphere, your parents' love and your family security, and later you reproduce them in your adult's home. Such strong bonds with your family and your home benefit your self-assertion as they combine professional efforts with presence at home. Working at home is particularly suitable, as are, indirectly, professions related to genealogy or even more, to real estate, because you are comfortable with the security aspects of the places you visit.

Your father often plays a major role, possibly an excessive one, with the danger that he may smother your desire for freedom and autonomy and contribute to aggravate your already strong natural introversion.

You are what is called belated and it is mainly during the second part of your life that you can concretely and efficiently exercise your will. Your assets lie in your determination to build a stable and comfortable home. However, family conflicts may exist and you may quarrel with your father over authority matters or over your projects; later, you may even undergo this sort of troubles in your own home if you are not flexible enough.

### **The ruler of your chart is in the 4th House**

The ruler of the Ascendant, also referred to as the chart ruler as explained in a previous chapter, is also posited in one of the twelve Houses of the chart. Just like the Sun in his House, the ruler of the Ascendant provides certain abilities, or it makes you appreciate more keenly certain areas of life.

The ruler of your Ascendant is in the same House as your Sun. This specific feature of your chart strengthens the Sun's characteristics previously delineated.

### **Aspects influencing your ambitions**

Regarding your destiny or your career, the following aspects of your natal chart allow to fine-tune what has just been said above:

★★★★☆ Mercury opposite Midheaven, orb -2° 12'

This opposition of Mercury to your Midheaven is also a conjunction with your Imum Coeli, François Hollande. Therefore, it is not strictly speaking a dissonance, on the contrary, it is a valuable asset for the management of your home and the interests of your family, even though somehow, it may be to the detriment of your social ascent. Actually, you feel more comfortable when you communicate with your close friends than in society.

★★★☆☆ Saturn square Midheaven, orb 2° 22'

Saturn is in dissonance with your Midheaven, François Hollande. Of course, nothing really serious is to be feared. It is just that sometimes, you feel that an unfair slowness keeps on delaying the achievements you deem that you deserve right now. You must work twice as hard to climb up the rungs of success, and above all, you must not get disheartened. Effort is one of the values you must work on, and it is a punishment by no means. It is obvious that your goals are achievable, but you must remain on the right track and show perseverance. That's all!

★★★★☆ Venus trine Midheaven, orb 2° 52'

In your natal chart, François Hollande, sweet Venus is in soft aspect with your Midheaven. It means that your natural charm and the way you express your feelings are appreciated in society. Usually, this configuration speeds up the achievement of your professional goals, or in any case, of a certain social status. A female - or females - may prove helpful for your career or your destiny.

★★★★☆ Sun conjunction Pluto, orb 5° 45'

This harmonious Sun-Pluto aspect indicates an exemplary clear-sighted mind. Without destabilizing your appearances or your personality mask, Pluto makes you aware of your subjective and questionable character, as well as of your manner. You never take yourself completely seriously. You have a good



grasp of human nature's complex games, without gullibility, without excessive simplification. Because you can perceive hidden elements underlying any situation better than anyone else, you are acknowledged as perspicacious. This aspect allows you to distance yourself from difficult circumstances and to remain impassive when you must overcome pitfalls.

★★★★★ Sun sextile Neptune, orb 4° 56'

This harmonious Sun-Neptune aspect indicates a highly developed intuition and clear-sightedness and sometimes, a sixth sense. Mental images or information drawn from the unconsciousness impress your mind. What was only a muddled feeling turns into certainty and deep conviction. You do not necessarily need to justify your attitudes: you take a decision because you feel that you have to do so, although you may not control the underlying logics. The danger is that you may follow fanciful or adventurous roads. Beliefs you cannot explain may prove wrong or over-optimistic. However, your intuition is seldom misleading. One last comment: there is often a keen curiosity for the « bizarre » and the paranormal with this planetary aspect.

★★★★★ Sun semi-sextile Jupiter, orb 1° 01'

This harmonious Sun-Jupiter aspect indicates an optimistic background that usually wins the entourage's adherence. It also suggests ambition and generosity and favours social integration and success. The desire to earn general consideration prompts you to display energy, joviality and benevolence. However, opportunism may be the other side of the coin. As you strive to win everyone's esteem, you may fall into disrepute. It is important that you remain clear-sighted so as to persistently pursue your long-term aims without believing that you should always « grab each and every opportunity ». However, this aspect remains an element of success because it allows you to adjust your objectives to the context, to whatever the situation offers or, on the contrary, to force your way through events and to achieve your ideals.

## Your Assets and Your Part of Joviality

This planetary configuration in your chart is very positive, François Hollande, because Jupiter, the planet of Greater Fortune, is in his exaltation, which means, in a privileged position. Jupiter protects your family area and later, your own home. Your sense of responsibilities is increased, your inclinations for comfort and customs are strengthened; usually, you are well integrated in society. You mature affectively early, and this fact enables you to avoid many setbacks. The only danger with this pleasant configuration may be your attraction to good things, in all areas, and their consequences.

François Hollande, the position of the planet of Greater Fortune in this astrological house brings about easy interpersonal relations, your siblings' love, great communication abilities within your neighbourhood, and pleasant short trips throughout your life.

The planet Jupiter symbolizes expansion, broadness and generosity. Jupiter is associated with the functions of synthesis, enthusiasm and optimism. In your natal chart, his house position is more important than his sign position because, like Saturn, Uranus, Neptune and Pluto, he is a slow planet. Many people born in the same period have Jupiter in the same sign. This is the reason why the sign occupied here is less meaningful than when it is occupied by the so-called fast planets, i.e. the Sun, the Moon, Mercury, Venus and Mars. Therefore, some caution is to be exercised as you read what follows.

Jupiter in Cancer is in the sign of his exaltation, which means that he is at great ease and he can express his essence more powerfully. He amplifies your emotions, your imagination and your optimism. You can be a good head of family or you develop a natural interest for matters linked to your home, your roots, your patrimony or that of your family. All your domestic affairs are protected.

## Your Serious Side

Perspicacity and profundity, and ability to dissect your passions. You manage to add a dose of reason into the analysis of your most intense moods, and you learn to step back from them. Your instincts are well-controlled, sometimes, a bit too much.

The association of the astrological house of effort with the planet symbolising concentration and the necessity to overcome one's fears is not negative in itself. In your daily life and in your work, François Hollande, more than anyone else, you are dependent on your courage and your persistence.

The danger is that you underestimate yourself psychologically, or that you give up a task just because you think that you cannot live up to people's expectations. Your challenge is to gain self-confidence and wisdom and to pursue your effort because in the long run, they will be rewarded.

The planet Saturn symbolizes contraction, effort, time, limitation and concentration. Saturn eliminates anything that is not authentic, sooner or later. It is impossible to cheat him as he gives an irresistible desire to form a coherent whole with oneself, in responsible and wise ways. He is the great purifier. He represents our limitations but also our truth. In your natal chart, the house position where Saturn is posited is more important than his sign position because, like Jupiter, Uranus, Neptune and Pluto, he is a slow planet. Many people born in the same period have Saturn in the same sign. This is the reason why the sign occupied here is less meaningful than when it is occupied by the so-called fast planets, i.e. the Sun, the Moon, Mercury, Venus and Mars. Therefore, some caution is to be exercised as you read what follows.

Saturn in Scorpio reinforces your resistance. Your demand for precision and your will to comprehend all things may make you seem a bit tough or harsh to your entourage. Because you are fond of precision, you are interested in exact sciences; your capacity to understand mysteries is strengthened. You learn to control your instincts, even though it may be detrimental to your spontaneity.

## A Few Special Points

### Your Uniqueness and Your Utopias

Your mind is agile, curious and mobile, and always on the lookout for things that are out of the ordinary. This stems from your interest in strange or original concepts, or in non-conformist people.

Your trips are unforeseen and you are often present where no one expects you. The only problem is that you may shock your entourage, at least, the most conventional persons, because this aspect of your personality is undoubtedly quite endearing, provided that you do not exceed a certain level of eccentricity, whether in intensity or in volume!

## Your Inspiration and Your Illusions

Your approach to daily life and your behaviour in your work environment are whimsical and abide by one single law: your mood or your feelings of the moment!

Although it may be detrimental to your own organization, it also endows you with qualities such as being easy-going, helpful, and ready to give assistance to those whom you perceive as nice persons.

Your health is quite fragile and, if the emotional sphere is unsatisfactory, you may transfer your moods to the physical plane and, for instance, you may be affected by allergies or problems difficult to identify.

## Your Passion and Your Authority

In general, your childhood was under stress, for many different reasons. Your early life was not very easy, and you probably felt a deep anxiety for reasons... that were not always real.

In your intimate and private sphere, when you feel in confidence, you may be domineering and authoritarian, whereas in public, you never show this facet of your personality.

Your sensitivity is acute, and you may be affected by trivial things without ever displaying your hurt feelings. But as you mature, your finesse becomes an asset instead of an element of vulnerability.

Symbolically, according to the Tradition, your father was authoritarian or domineering. This is not always true, but this is how you perceived him when you were a child.

## Your Isolated Planets

In general, the ten planets of the chart are connected to other planets by major or minor astrological aspects. It is owing to those ties that the planets' energies can manifest in the chart owner's personality and play out within safeguards according to a specific tonality.

It seldom happens that in a natal chart, a planet is totally disconnected from the nine other planets.

Astrologers have observed that when such a case occurs, the person feels the energy of the unaspected planet in quite a singular way, very jerky and powerful at the same time. Thus, for instance, the famed astrologer Jean-Baptiste Morin de Villefranche wrote that "an unaspected planet heralds that something strange or extraordinary will take place regarding the meanings of the house in which the said planet is posited" (source : l'astrologie selon Morin).

Rules for detecting an unaspected planet: among all the testimonies that we have reviewed to this day, based on our experience, we tend to agree with American astrologer Janis Huntley who accepts seven aspects, which involve the zodiacal twelve sections of 30 degrees. The aspects to be considered are the conjunction (0 degree, cooperation or tension), the semi-sextile (30 degrees), the sextile and the trine (60 and 120 degrees respectively, aspects of cooperation), the square and the opposition (90 and 180 degrees respectively, tensed aspects), and the quincunx (150 degrees, slightly tensed). In this detection, the chart's angles are not taken into account.

In any case, it is important to remember that an isolated planet clearly expresses its influence when it is a personal planet. Thus, when the Sun, the Moon, Mercury, Venus, or Mars is isolated, it is certain that the effects described by Jean-Baptiste Morin de Villefranche will become manifest. As for Jupiter, Saturn, Uranus, Neptune, and Pluto, one must be cautious because the volume of cases documented is not yet large enough.

Your chart has no isolated planet, and this particular case does not apply to you.

## Annex 1: Your Minor Dominants

The five following dominants are less significant than those described at the beginning of your report. They may not be strongly felt. In some cases, they add several minor details to the analysis of your character, but they are rather for curiosity purposes. It is not necessary to take them into account when you first read your portrait.

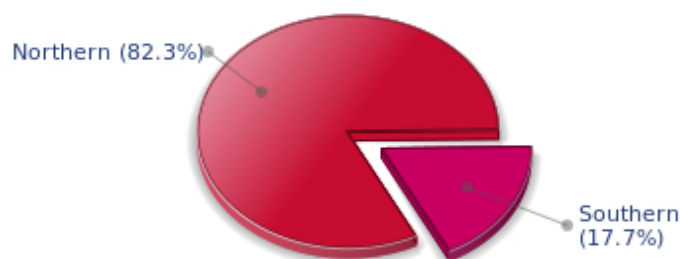
### Your Planetary Repartitions: Northern, Southern, Eastern and Western Hemispheres

The axis linking the 1st house's cuspide (the Ascendant) to the 7th house's cuspide - the Descendant - divides the zodiac into two bowls, a superior bowl, in the South, and an inferior bowl in the North. Quoting an expression by the famous American astrologer Rudhyar, the Southern part and the Northern part correspond to two functions: "being" and "doing". Other concepts are also associated with this North and South distribution, such as introversion - Northern hemisphere - and extraversion - Southern hemisphere - being or appearances, inner life or external life, reflection or action, dreaming one's life or living one's dreams, the abstract or the concrete, backstage or limelight.

This is not about determination but about personal inclination: thus, some people will be thrown into public life despite a prominent Northern hemisphere. If this happens, however, it will not be due to their will, their taste or their deep nature. Conversely, a prominent Southern hemisphere will not bring about a famous destiny to its owner, even if he tends to turn the spotlight on himself, or if he looks for a more active life. It is a matter of deep nature and natural inclination. Of course, none of the typologies is "superior" to another.

In your birth chart, François Hollande, the ten main planets are distributed as follows:

### Your Northern and Southern Hemispheres



François Hollande, the predominance of planets in the Northern hemisphere prompts you to reflect and imagine rather than to exteriorize your actions and to be at the forefront of the stage. So, should you wish to remedy this situation, it is up to you to force your nature to take action in broad daylight, to communicate, and to assert yourself... then, you can move forward in this concrete life and enjoy your newly won situation.

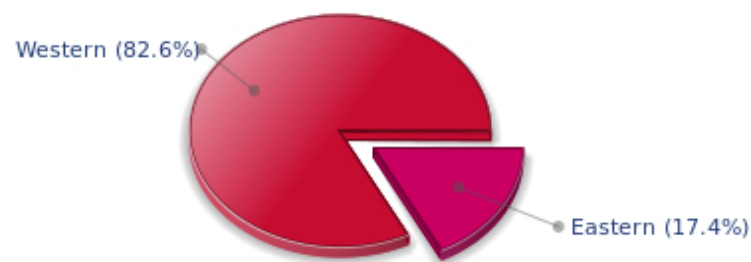
The birth chart is divided into two other parts, Eastern and Western, by the axis linking the Midheaven

to the Imum Coeli.

The Eastern part, on the Ascendant side, shows the person's ego, will, magnetism, and vitality, whereas the Western part, on the Descendant side, symbolizes other people, communication, relationships and their influence, as well as flexibility and adaptability.

François Hollande, here is the planetary repartition in your Eastern and your Western hemispheres:

### Your Eastern and Western Hemisphere:



The predominance of planets in the Western hemisphere of your chart means that you are quite flexible, capable of empathy, convivial and communicative. An excellent factor for many professional activities or for your social or sentimental life for example.

A definite asset... provided that you are not at the centre of the decisions you must take in your life: you may be tempted to listen to the last person who spoke, and your flexibility won't always get you out of the tight spot. You are therefore advised to learn to decide alone and to cope with the consequences of your actions with courage and without regrets. This attitude will allow you to combine flexibility and action, adaptability and absence of hesitation.

### Your Yin and Yang Polarity

The twelve signs are divided into two polarities, called active or passive, or sometimes masculine and feminine, positive and negative, Yang and Yin. This classification corresponds to two quite distinct tonalities, the first one bringing extraversion, action, self-confidence and dynamism, the second one, introversion, reactivity, reflection and caution. None is superior to the other, each group has its own assets and shortcomings. Odd signs - Aries, Gemini, Leo, Libra, Sagittarius and Aquarius - belong to the first group, whereas even signs - Taurus, Cancer, Virgo, Scorpio, Capricorn and Pisces - belong to the second group.

## Your Yin and Yang Polarity



According to the disposition and qualities of your planets and angles, you are rather influenced by Yang energy, the active polarity, François Hollande: more concerned about actions than reflection, you sometimes rush without standing back and without the deepness that is needed. However, your spontaneity prompts you to take fresh starts, even after repeated failures caused by your rashness.

### Your Houses' Accentuations

Houses are split up into three groups: angular, succedent and cadent.

The first ones are the most important ones, the most "noticeable" and energetic houses. They are the 1st, 4th, 7th and 10th houses. Their cuspides correspond to four famous angles: Ascendant for the 1st house, Imum Coeli for the 4th house, Descendant, opposite the Ascendant, for the 7th house and Midheaven for the 10th house, opposite the Imum Coeli.

Planets are evaluated according to a whole set of criteria that includes comprehensive Western astrology rules. At their turn, planets emphasize specific types of houses, signs, repartitions etc., as previously explained.

## Your Houses' Accentuations



Your angular houses, namely, the 1st, 4th, 7th and 10th houses, are very emphasized in your chart,

François Hollande: according to the Tradition, they are the strongest and most dynamic houses. Should the rest of your chart concur, angular houses suggest that you are an enterprising, energetic and assertive man. Indeed, angular houses are said to generate impulses and to give a powerful and domineering personality.

Unusual fates are often linked to a predominance of angular houses, but this is only a partial indication...

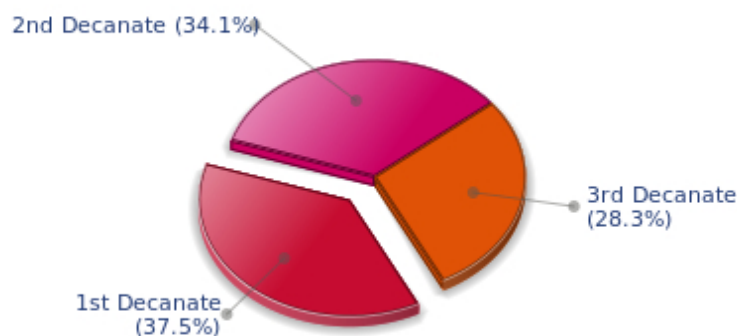
### Your Esoteric Decanates

Each sign contains 30 degrees and can be divided into three equal parts: the decanates. The Tradition indicates that specific meanings can be associated to each of the three decanates. Their sphere of activity is usually limited to the Sun sign, however, it is even more interesting to observe the distribution of all the planets in the chart to get an idea of the respective importance of the three decanates, which can complement the description of the personality.

These meanings must be considered with the greatest caution. Indeed, they are minor characteristics that can only underline other outstanding traits of character.

Traditionally, the first decanate highlights the characteristics of the sign where a planet is located. The two other decanates correspond to sub-dominant planets, depending on the nature of each sign. This system leads to a multiplication of meanings and it is impossible to have a clear understanding: here, we prefer to give only the meaning of one decanate in comparison with the other two, within the birth chart as a whole. Again, the greatest caution is needed with regard to this minor indication as it is not always reliable: it is not essential that you read these texts in the beginning. You can get back to them later on, once you have read more important interpretations

### Your Esoteric Decanates



The first decanate, which means the part between 0° and 10° of any zodiacal sign, prevails in your natal chart, François Hollande: this decanate is traditionally linked to vitality and physical constitution, and may indicate that you efficiently express your concrete energy on the material and sensual planes.



## Annex 2: Karmic Study

The karmic theme is a good complement to the psychological portrait, or natal chart. This analysis is based on the positions of the Lunar Nodes, the Black Moon and the Part of Fortune: they are also called fictitious points and describe the spiritual purpose of your destiny. Because there is in all of us an experience and a quest, our life is an evolutionary journey... provided that we head towards the right direction, of course! Indian astrologers highly prize the Nodes axis (North Node and South Node). It is the Ariadne's thread that we are invited to follow. The Black Moon indicates the sector where we are most likely to transform or to transcend, whereas the Part of Fortune points out the area where we can easily express our specificity.

### The Lunar Nodes: a spiritual path

Lunar Nodes have their roots in the Indian tradition and they are based on a simple concept: each of us have a mission of their own, here on earth, a destiny, a course. According to the Indian philosophy, life is a school: the nodal axis describes our past experiences (South Node, our karma, our spiritual inheritance or our previous lives), and our aims on earth (North Node, our Dharma, the purpose of our current incarnation). This is the reason why the study of the lunar nodes is called "Karmic astrology". Here, we shall not step into hypothetical past lives. Wherever our current trends may come from, all that really matters is that we become aware of the purpose of our life, its finality and our dharma. We are likely to understand our life purpose around the age of 37, when the Lunar Nodes return to their natal position.

Your life is marked with the major challenge of developing your social image, of asserting your personality... and of leaving your shell. Your childhood and your family roots are very present. You have an inclination for quietness, protections and intimacy. You enjoy at will the moments when you feel "at home", in known territory and familiar situations. But you must learn to thrive in society, to give of your best, to socially shine, particularly when you feel that external pressure and opinions are upsetting. Do not fall in the trap of your dreams and souvenirs! Life implies responsibilities and the will to control, otherwise you cannot feel your true self. You may be too dependent and you must learn to slowly become autonomous, free to take decisions and to take action. Your sense of duty allows you to climb all the steps of a perilous, yet thrilling, social ladder. As years go by, you claim more autonomy, more power and more freedom of action.

Your life's purpose is related to your disregard for material goods and dispossession. Whether or not you enjoy comfort, a financial or affective capital, someday, you question your assets and you start anew. Of course, you enjoy life's simple joys. The security granted by stable relationships allows you to cope with possible delusions. But life undertakes to remind you that nothing is eternal here below, the wheel keeps on turning and, at any time, one may irrevocably lose what one thought to possess forever. Paradoxically, ordeals and losses make you stronger: as time goes by, you feel freer, more detached from the values of this world and closer to the essential... The spiritual life can't be bothered with the prosperity sought after by ordinary mortals. As you give up the values that you once thought to be indispensable, you gain in terms of lucidity and, eventually, in terms of tranquillity. Your powers and your inner dimension will then impress many people: do not overdo it!

### Lilith or the Dark Moon

The Black Moon is the spark of refusal and distance that is dormant in all of us. Depending on the sign where she is found in your chart, she highlights the desire to transform and to sublimate a part of your life. The Black Moon is unfathomable and mysterious. She gives a different dimension to the sector she

touches. Her manifestations are subtle; nonetheless, she is powerful, implacable, demanding to the extreme... The Black Moon is also called Lilith. She is the inner flame of your heroism and insubordination.

You decidedly assert yourself as a person made of desires, love and the absolute. If this configuration is not well controlled enough, your thirst for timeless relationships may hamper simple, natural and obvious affairs. You may reject persons whose attitudes do not perfectly live up to your expectations. However, as you keep on looking for your muse, it is very likely that you will find the person to whom fate has relentlessly tied you.

You are a person thirsting for precision and perfection. Your rebellions are frequent: any mechanism that is not running perfectly smoothly is dismissed. Any person whose attitudes seem inconsistent becomes the object of your refusal. Better than anyone else, you can ridicule social stereotyped models, too conventional and ineffective. It is likely that you often succeed in giving a logical dimension to the craziest situations.

### **The Part of Fortune in House**

The Part of Fortune is a very ancient fictitious point that depends on the lunar phase at the time of birth. The astrological house tenanted is particularly strengthened. In your chart, the Part of Fortune is in the 8th house: you need to constantly transform your life, to evolve and to shed your skin. You do not hesitate to regularly question the basis of your manner. Everything is death and revival and the wheel of life is ruthless: what was still yours yesterday will be a mere souvenir tomorrow... Your wealth is the know-how you demonstrate when you cope with changes imposed by events, while always remaining true to yourself.

## Conclusion

A few remarks are needed here in order to allow you to fully take advantage of your astrological portrait: firstly, do not forget that a birth chart is also a photograph of the sky at birth and a structure that not only contains the personality's characteristics, but also its potential evolution.

We all know that, in real life, people begin to know themselves when they are in their forties, or even later. Likewise, several traits of character in a portrait may seem surprising: in most cases, it means that such features are not yet developed.

Some personalities reveal themselves late in life, whereas others are more precocious. It must be remembered that psychological structures are in a state of continuous evolution because they are influenced by unfolding events and gradual maturity. We can never underline strongly enough the "mobile" nature of the personality, throughout a lifetime.

On the other hand, it is difficult to discriminate what is "already present" at this moment in your life when you are reading your chart's interpretation, from what will appear later in the logic of your evolution: you must sort out all the pieces of information provided and, in most cases, you will see that your astrological portrait is helpful for your endeavours to know yourself better.

Finally, several readings of an astrological portrait are usually necessary in order to absorb all its different meanings and to evaluate the relevance of each character trait.

In any case, better self-knowledge obviously contributes to faster personal blossoming, and it is undoubtedly one of astrology's major roles: contributing to know oneself better, in order to improve more rapidly, to deal with one's weaknesses and to avoid its drawbacks, and to take advantage of one's assets as efficiently as possible.

---