

**Florent Pagny's
Astrological Portrait**





Florent Pagny's Astrological Portrait



Introduction	2
Your Planets, Houses, Aspects, and Natal Chart	4
Preamble	7
Your Planetary Repartitions	8
Your Dominant Modes and Elements	9
Your Dominants: Planets, Signs and Houses	10
Your Style, Behaviour, and Peculiarities	15
Your Sensitivity	19
Your Affectivity	20
The Way You Take Action and Your Sexuality	22
Your Intellect and Your Communication Style	23
Your Goals, Motivations, Career, and Destiny	24
Your Assets and Your Part of Joviality	28
Your Serious Side	28
A Few Special Points	29
Your Isolated Planets	30
Annex 1: Your Minor Dominants	31
Annex 2: Karmic Study	35
Conclusion	37



Florent Pagny's Astrological Portrait

Introduction

To fully benefit from this portrait, we suggest that you read its introduction and its preamble carefully, and then that to take the time to soak up the interpretations of each chapter. Given the large number of texts, which mirrors the human being's complexity, you may need to go through the contents several times, so as to get a good grasp of their meaning and to know yourself better. This will reward your patience.

The purpose of this report is to describe your psychological portrait and to highlight the most fundamental features on the personal area. The report begins with the analysis of your planetary dominants and outlines your personality's general traits before going into further detail. Minor dominants are analysed at the end of Annex 1, for purposes of clarity. Your report then delineates the various facets of your personality:

In general, even when relationships are not involved, we express ourselves and we feel according to our character and our personal motivations: this is indicated by the Ascendant and the Sun sign which both give details on the way we function. They shed a tremendously important light which allows to figure out your personality. Here, we describe your Sun sign (your inner self), your Ascendant (your behaviour as seen by others), and the ruler of the Ascendant (interesting additional pieces of information about the style of your personality). These descriptions alone cover nearly a third or a half of your psychological signature, depending on your natal chart characteristics.

Then, we address your sensitivity, or in other words, the way you receive things and how you express your emotions ; it works as a constant filter for all your exchanges, even when it becomes a more secondary element in your amorous relationship, because at that moment, affectivity prevails. Sensitivity is the way you perceive things, it is your radar, your daily mood, and at the same time, it indicates how you react to your entourage, on a daily basis. It is what others immediately see of you. In the second paragraph, we explain in which areas of life your sensitivity and your emotions are strongest, therefore, where you are most vulnerable.

After this, it is your affectivity, the way you love and how you charm, that comes into play as soon as you fall in love: the first part indicates its basic structure or its main form. The second part describes the areas where it is best expressed and how you display it, according to your personality.

A third fundamental area deals with your mode of action and your sexuality: how you behave, how you manage to obtain what you want, what kind of desires you have. There are twelve possibilities, very

different from one another. The study discloses the specific one that applies to you. In the second paragraph, we explain in which life areas you may most efficiently take advantage of your capacity for action and for conquest.

Your ways of communicating and of thinking are obviously among the major elements that must be integrated into the delineation and the description of your personality. Indeed, they influence your general behaviour and may modify or enhance the image your project (for instance, extraversion may “compensate” a weak affectivity, but a huge number of cases are possible). An additional chapter indicates the favourite areas where you enjoy communicating, thinking and meeting with people.

Besides, we analyze an even more personal aspect that is important to define and understand what may occur within your couple: each of us have a centre of interest, a privileged manner to be fulfilled or to achieve our destiny; this main motivation is indicated by the positions of your Sun and your chart ruler in the astrological houses and we provide you with its detailed description.

A natal chart contains the potential for specific fulfilment and a whole range of assets, protections and qualities. How does the lucky factor manifest in your personality? In which area can you best exploit your qualities? The answers are precisely revealed to you in this chapter.

On the other hand, we all feel in us a part of vulnerability, doubts and fears. How does this part of solemnity or serious side play out? How is it possible to handle it in order to evolve and to get rid of useless elements? All this information is provided to you in these two paragraphs.

Then, you can discover three additional traits of your personality that must be considered as secondary ones. They deal with your predispositions, which means that they need to be triggered by external events because they are not influenced by your will; let's call it a part of fate. Please, bear in mind that your destiny can unfold only in accordance with what you are: therefore, even if they belong to your more unconscious self, these characteristics are parts of you, definitely.

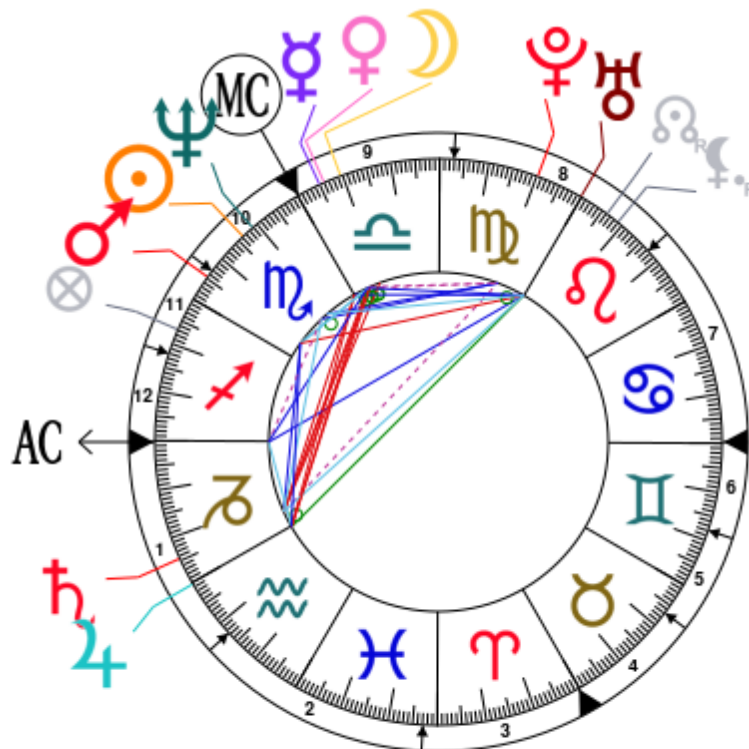
The karmic chart complements the psychological portrait or natal chart. It is based on the positions of the Lunar Nodes, the Black Moon, and the Part of Fortune. These elements of the chart, sometimes referred to as fictitious points, provide information about the spiritual meaning of your destiny. Owing to the fact that we all have in us acquired knowledge and the urge to go on a quest, our life is an evolutionary journey... However, these texts must be read with great caution: this is the reason why you will find this analysis in the Annex 2 of your report.

Your Planets, Houses, Aspects, and Natal Chart

Florent Pagny, born November 6, 1961, at 11:30 AM, Chalon sur Saône (Bourgogne), France [4.51E ; 46.47N ; 1E00]

Natal Planets				In House	Natal Houses (Placidus)			
☉ Sun	13°47'	♏	Scorpio	House 10	House 1	0°15'	♐	Capricorn
☾ Moon	20°26'	♎	Libra	House 9	House 2	12°36'	♒	Aquarius
☿ Mercury	25°01'	♎	Libra	House 9	House 3	27°06'	♓	Pisces
♀ Venus	24°01'	♎	Libra	House 9	House 4	29°50'	♈	Aries
♂ Mars	24°40'	♏	Scorpio	House 11	House 5	23°10'	♉	Taurus
♃ Jupiter	0°18'	♒	Aquarius	House 1	House 6	12°03'	♊	Gemini
♄ Saturn	24°31'	♐	Capricorn	House 1	House 7	0°15'	♋	Cancer
♅ Uranus	0°08'	♍	Virgo	House 8	House 8	12°36'	♌	Leo
♆ Neptune	11°09'	♏	Scorpio	House 10	House 9	27°06'	♍	Virgo
♇ Pluto	9°47'	♍	Virgo	House 8	House 10	29°50'	♎	Libra
♁ Node	23°49' R	♌	Leo	House 8	House 11	23°10'	♏	Scorpio
♇ Lilith	21°03' R	♌	Leo	House 8	House 12	12°03'	♐	Sagittarius
AS AS	0°15'	♐	Capricorn					
MC MC	29°50'	♎	Libra					

In keeping with the common practice, we consider that a planet posited within 1 degree of the next house belongs to that house. We allow an orb of 2 degrees for the ASC and the MC.



List of Your Active Planetary Aspects

Please find below the list of all the active inter-aspects which are interpreted in this report, in addition to your planets in sign, in house, and all your planetary dominants. Since the aspects between slow-moving planets are of a collective nature, they are not displayed, in compliance with our interpretation rules.

- ★★★★★ Sun quintile Saturn, orb -1° 15'
- ★★★★★ Sun conjunction Neptune, orb 2° 37'
- ★★★★★ Sun sextile Pluto, orb 3° 59'
- ★☆☆☆☆ Sun semi-square Ascendant, orb 1° 28'
- ★★★★★ Moon conjunction Mercury, orb 4° 35'
- ★★★★★ Moon conjunction Venus, orb 3° 34'
- ★★☆☆☆ Moon square Saturn, orb 4° 04'
- ★★★★★ Moon conjunction Midheaven, orb 9° 24'
- ★★★★★ Mercury conjunction Venus, orb 1'
- ★★★★★ Mercury semi-sextile Mars, orb -0° 2'
- ★★☆☆☆ Mercury square Jupiter, orb 5° 16'
- ★★☆☆☆ Mercury square Saturn, orb -0° 3'
- ★★★★★ Mercury sextile Uranus, orb -5° 07'
- ★★☆☆☆ Mercury semi-square Pluto, orb 0° 13'
- ★★★★★ Mercury sextile Ascendant, orb 5° 13'
- ★★★★★ Mercury conjunction Midheaven, orb 4° 49'
- ★★★★★ Venus semi-sextile Mars, orb 0° 39'
- ★★☆☆☆ Venus square Jupiter, orb 6° 17'
- ★★☆☆☆ Venus square Saturn, orb 0° 3'
- ★★☆☆☆ Venus semi-square Pluto, orb -0° 46'
- ★★★★★ Venus conjunction Midheaven, orb 5° 49'
- ★★★★★ Mars sextile Jupiter, orb 5° 37'
- ★★★★★ Mars sextile Saturn, orb -0° 09'
- ★★☆☆☆ Mars square Uranus, orb -5° 28'
- ★★★★★ Jupiter conjunction Saturn, orb 5° 47'
- ★★★★★ Jupiter semi-sextile Ascendant, orb 0° 02'
- ★★☆☆☆ Jupiter square Midheaven, orb 0° 27'
- ★★☆☆☆ Saturn square Midheaven, orb -5° 19'
- ★★★★★ Uranus trine Ascendant, orb 0° 06'
- ★★★★★ Uranus sextile Midheaven, orb -0° 18'

Meaning of Stars

Stars indicate the strength of the aspects. Two solid coloured stars (there are half-stars also), mean that the aspect is powerful enough to be noticed at the first reading.

We strongly advise that you read the paragraphs displaying less than two stars later on, after you have absorbed the full import of the other texts.

The yellow colour indicates a soothing and conciliating aspect, and the red colour, a dynamic and tense aspect. The red aspects enable you to evolve, to take action, and to learn to turn your "weaknesses" into assets through your life experiences. The yellow aspects are innate strengths on which you rely in order to grow better with the former...

Preamble

When interpreting a natal chart, the best method is to start gradually from general features to specific ones. Thus, there is usually a plan to be followed, from the overall analysis of the chart and its structure, to the description of its different character traits.

In the first part, an overall analysis of the chart enables us to figure out the personality's main features and to emphasize several points that are confirmed or not in the detailed analysis: in any case, those general traits are taken into account. Human personality is an infinitely intricate entity and describing it is a complex task. Claiming to rapidly summarize it is illusory, although it does not mean that it is an impossible challenge. It is essential to read a natal chart several times in order to absorb all its different meanings and to grasp all this complexity. But the exercise is worthwhile.

In brief, a natal chart is composed of ten planets: two luminaries, the Sun and the Moon, three fast-moving or individual planets, Mercury, Venus and Mars, two slow-moving planets, Jupiter and Saturn, and three very slow-moving planets, Uranus, Neptune and Pluto. Additional secondary elements are: the Lunar Nodes, the Dark Moon or Lilith, Chiron and other minor objects. They are all posited on the Zodiac wheel consisting of twelve signs, from Aries to Pisces, and divided into twelve astrological houses.

The first step is to evaluate the importance of each planet. This is what we call identifying the dominant planets. This process obeys rules that depend on the astrologer's sensitivity and experience but it also has precise and steady bases: thus, we can take into account the parameters of a planet's activity (the number of active aspects a planet forms, the importance of each aspect according to its nature and its exactness), angularity parameters; (proximity to the four angles, Ascendant, Midheaven, Descendant and Imum Coeli or Nadir, all of them being evaluated numerically, according to the kind of angle and the planet-angle distance) and quality parameters (rulership, exaltation, exile and fall). Finally, other criteria such as the rulership of the Ascendant and the Midheaven etc. are important.

These different criteria allow a planet to be highlighted and lead to useful conclusions when interpreting the chart.

The overall chart analysis begins with the observation of three sorts of planetary distributions in the chart: Eastern or Western hemisphere, Northern or Southern hemisphere, and quadrants (North-eastern, North-western, South-eastern and South-western). These three distributions give a general tone in terms of introversion and extraversion, willpower, sociability, and behavioural predispositions.

Then, there are three additional distributions: elements (called triplicity since there are three groups of signs for each one) - Fire, Air, Earth and Water - corresponding to a character typology, modality (or quadruplicity with four groups of signs for each one) - Cardinal, Fixed and Mutable - and polarity (Yin and Yang).

There are three types of dominants: dominant planets, dominant signs and dominant houses. The novice thinks astrology means only "to be Aries" or sometimes, for example, "to be Aries Ascendant Virgo". It is actually far more complex. Although the Sun and the Ascendant alone may reveal a large part of the character - approximately a third or a half of your psychological signature, a person is neither "just the Sun" (called the sign) nor just "the first house" (the Ascendant). Thus, a particular planet's influence

may be significantly increased; a particular sign or house may contain a group of planets that will bring nuances and sometimes weaken the role of the Ascendant, of the Sun sign etc.

Lastly, there are two other criteria: accentuations (angular, succedent and cadent) which are a classification of astrological houses and types of decanates that are occupied (each sign is divided into three decanates of ten degrees each). They provide some additional informations.

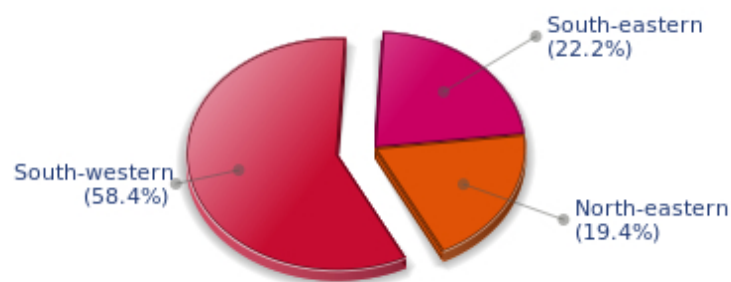
These general character traits must not be taken literally; they are, somehow, preparing for the chart reading. They allow to understand the second part of the analysis, which is more detailed and precise. It focuses on every area of the personality and provides a synthesis of all the above-mentioned parameters according to sound hierarchical rules.

As explained in the introduction of your Psychological Portrait report, minor dominants are analysed at the end of Annex 1, for purposes of clarity.

Your Planetary Repartitions

Each quadrant is a combination of the four hemispheres of your birth chart and relates to a character typology. The Southern hemisphere – the top of your chart, around the Midheaven – is associated with extraversion, action, and public life, whereas the Northern hemisphere prompts to introversion, reflexion, and private life. The Eastern hemisphere – the left part, around the Ascendant – is linked to your ego and your willpower, whereas the Western hemisphere indicates how other people influence you, and how flexible you are when you make a decision.

Your Four Quadrants

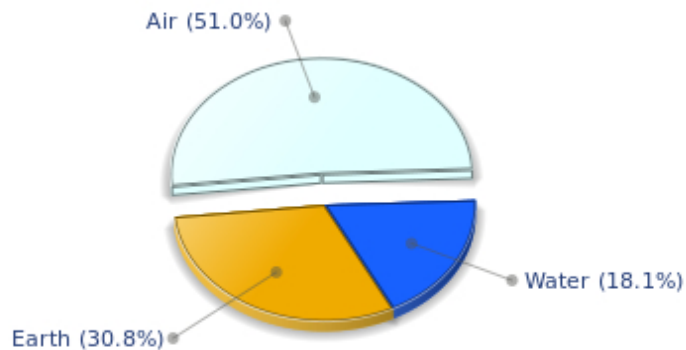


Florent Pagny, the diurnal South-western quadrant, consisting of the 7th, 8th and 9th houses, prevails in your chart: this sector brings about a thirst for communication and sometimes a need to take risks in your dealings with others. Relations are a factor of your evolution and your transformation, which you accept serenely. Indeed, what matters to you is the movement and the energy that link you to others and that make you gain more awareness. A kind of rebellion or a desire to get away from it all is rooted in you.

Your Dominant Modes and Elements

Florent Pagny, here are the graphs of your Elements and Modes, based on planets' position and angles in the twelve signs:

Your Four Elements



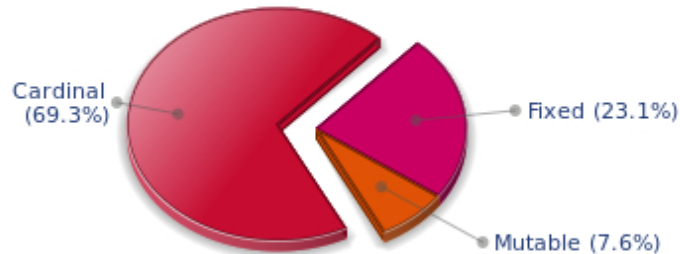
Cheers for communication and mobility, Florent Pagny! The predominance of Air signs in your chart favours and amplifies your taste for relations and for all kinds of short trips, whether real (travels) or symbolic (new ideas, mind speculations). You gain in flexibility and adaptability what you lose in self-assertion or in pragmatism.

Like the majority of Earth signs, Florent Pagny, you are efficient, concrete and not too emotional. What matters to you is what you see: you judge the tree by its fruits. Your ideas keep changing, words disappear, but actions and their consequences are visible and remain. Express your sensitivity, even if it means revealing your vulnerability. Emotions, energy and communication must not be neglected; concrete action is meaningless if it is not justified by your heart, your intellect or your enthusiasm.

Fire's qualities are not very present in your chart, with only 0.00% instead of the average 25%, which means that you may lack warmth, enthusiasm, conquering spirit, or energy. You may look indifferent to others, with almost no desire, no joy of life or no enterprising ability. Actually, it is not true, but you should let go, force yourself to be more daring, and show your amazement as well as your vitality. You certainly have as much energy as others, you just need to release it, and it is up to you to display more of it, since it will be all to your benefit: shout, sing, pull faces, dance! That's the right mean for you... In the end, you'll never be accused of being sad, phlegmatic or a killjoy!

The twelve zodiacal signs are split up into three groups or modes, called quadruplicities, a learned word meaning only that these three groups include four signs. The Cardinal, Fixed and Mutable modes are more or less represented in your natal chart, depending on planets' positions and importance, and on angles in the twelve signs.

Your Modes



Florent Pagny, the Cardinal mode is dominant here and indicates a predisposition to action, and more exactly, to impulsion and to undertake: you are very keen to implement the plans you have in mind, to get things going and to create them. This is the most important aspect that inspires enthusiasm and adrenalin in you, without which you can grow weary rapidly. You are individualistic (maybe too much?) and assertive. You let others strengthen and improve the constructions which you built with fervour.

Your Dominants: Planets, Signs and Houses

The issue of dominant planets has existed since the mists of time in astrology: how nice it would be if a person could be described with a few words and one or several planets that would represent their character, without having to analyse such elements as rulerships, angularities, houses, etc!

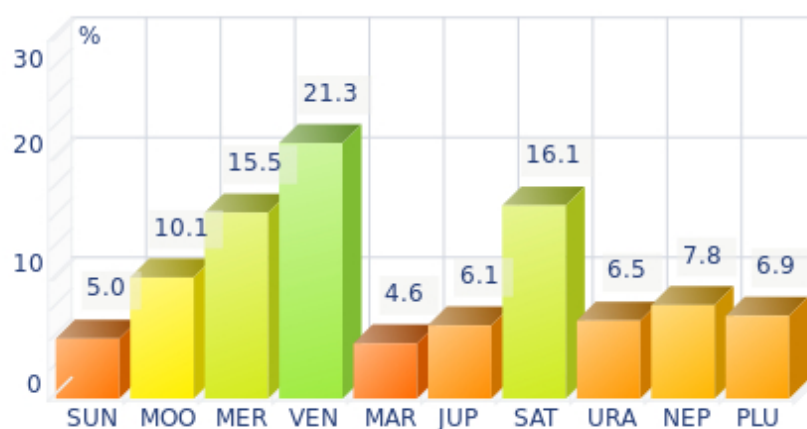
The ten planets - the Sun throughout Pluto - are a bit like ten characters in a role-play, each one has its own personality, its own way of acting, its own strengths and weaknesses. They actually represent a classification into ten distinct personalities, and astrologers have always tried to associate one or several dominant planets to a natal chart as well as dominant signs and houses.

Indeed, it is quite the same situation with signs and houses. If planets symbolize characters, signs represent hues - the mental, emotional and physical structures of an individual. The sign in which a planet is posited is like a character whose features are modified according to the place where he lives. In a chart, there are usually one, two or three highlighted signs that allow to rapidly describe its owner.

Regarding astrological houses, the principle is even simpler: the twelve houses correspond to twelve fields of life, and planets tenanted any given house increase that house's importance and highlight all relevant life departments: it may be marriage, work, friendship etc.

Florent Pagny, here is the evaluation diagramme for your planets:

Your Dominant Planets



The three planets that are most highlighted in your chart are Venus, Saturn and Mercury.

With Venus among your dominant planets, one of your first reflexes is... to please! Your look, your charm, and your seduction are omnipresent elements in your behaviour.

Your approach to things is connected to your heart, and for you, no real communication can flow if your interlocutors exude no sympathy or warmth. Cold and logical reasoning, clear thoughts and good sense are not important to you: if there is no affective bond with your environment, no connection can be established with the Venusian that you are, and nothing happens.

You have a strong artistic side, and you never neglect subjective but clear concepts such as pleasure, beauty, and also sensuality. However, sometimes to the detriment of efficiency, durability, logic, and... detachment.

Saturn is part of your dominant planets: among the facets of your character, you have a grave and serious side, wise and somewhat severe, since your concentration can be powerful, to the detriment of carelessness and friendliness.

You often look austere, but it is only an appearance, a kind of modesty or reserve; however, it is true that the Saturnian, who is fond of time, effort, asceticism, rigour and sobriety, may have popularity issues. Nevertheless, honesty and straightforwardness, reliability, as well as slow, wise and deep mental process, although not very popular and visible qualities, eventually become noticed and appreciated. Saturnians' second part of life is usually easier and more fulfilling.

Like the Jupiterian, your Saturnian facet prompts you to seek the essential, security, and longevity. However, the difference with the former is that you will never give priority to wealth or "the bigger, the better" philosophy for the sake of power. Saturn, like Jupiter, symbolizes social integration, and it is usually considered positive to have a harmonic Jupiter and Saturn in one's chart because of their social adaptation capacities.

Your vulnerability lies in your too serious and austere side, which may lead to unwanted loneliness and affective frustration. This generally does not last because Saturnians often hide deep down a golden heart

that ends up revealing itself...

With Mercury among your dominant planets, you are certainly cerebral, nervous, swift, curious, quick-witted, and you love to communicate. Your psychological pattern is intellectual, all the more so since Mercury is important, with its whole set of assets but also of weaknesses, obviously.

Your sensitivity, emotions, and heart's impulses give precedence to thinking, which can lead people to believe that you are a playful and witty but heartless person, intellectualizing situations and juggling with words and numbers whilst ignoring human aspects of things. Of course, it is said that cats always land on their feet - this is your Mercurian strength and your trump card!

Your weakness lies in your nervousness, and you may miss your goal because of your "over-intellectualization" that may be detrimental to other kind of energies such as instinct, spontaneity, heart, sensitivity, etc.

Your Dominant Signs



In your natal chart, the three most important signs, delineated according to the above-mentioned criteria, are, in decreasing order of strength, Libra, Capricorn and Scorpio. They are often prominent because your Ascendant and your Sun are posited there. However, it is not always the case: it may be because they are occupied by a cluster of planets, by a planet near an angle other than the Midheaven and the Ascendant, or because two or three planets are very active and form numerous aspects from these signs. Therefore, you partly take on the three signs' characteristics, which are somehow superimposed on your natal chart, and all the more so if any of the signs in question is highlighted.

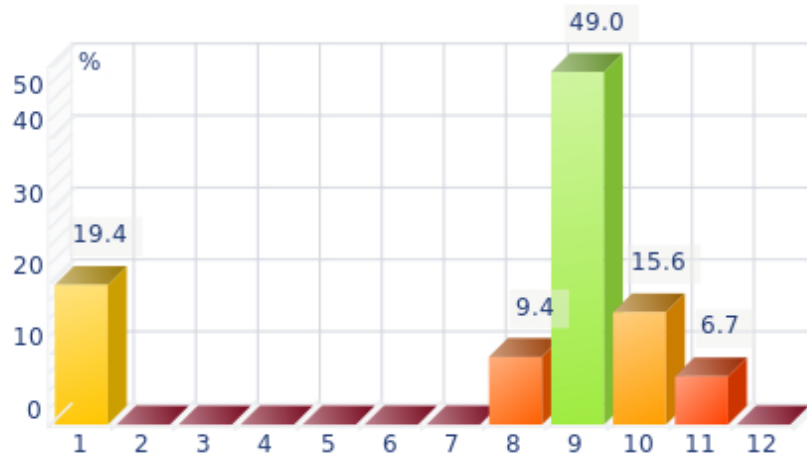
With Libra as a dominant sign in your natal chart, you love to please, to charm, and to be likeable. Moreover, you are naturally inclined towards tolerance and moderation, as well as elegance and tact, as if you were meant to please! Of course, you always find malcontents who criticize your lack of authenticity or of courage and your half-heartedness, but your aim is to be liked, and in this field, you are an unrivalled champion!

Capricorn is one of your dominant signs and endows you with a grave and serious style that seems to stick to you constantly. But if you have that reserved and cold side - as some extrovert people may think - on the other hand, you possess sturdy qualities: you are strong-willed and tough. Your long-term vision, your sense of duty, and your ambition are not affected by the derisory and erratic motions that seem to

upset most mortals less steady than you. Besides, you are like a good wine, you age well and your natural solemnity or serious side paradoxically turns into an almost cheerful appearance, as you grow older. You are actually very sensitive when it comes to love. Faithful, caring, sweet, and sensitive, your behaviour is very different in your everyday, sentimental life. A golden heart beats under your tough and austere appearance...

With Scorpio as a dominant sign, you are a strong and astute person, complicated and passionate, sometimes destructive and intolerant, but strong-willed, tough and daring, sometimes bordering on aggressive. So many qualities and dangers combined in one person! Obviously, this often results in a natural selection of people around you: those who stand up to you or admire you and those who can't bear you anymore! But that is precisely what you want. You are what you are and you are not going to transform yourself just to please. You are too proud and you never dread confrontations, although your way of fighting is secret, like your nature that, mysteriously enough, you are so reluctant to reveal even to your close friends who will never understand you. That said... what a hellish charm you have!

Your Dominant Houses



Houses 9, 1 and 10 are the most tenanted ones in your natal chart. To compute their strength, planets and angles are weighed according to various astrological criteria such as swiftness, activity, angularity, rulership etc. From the analysis of the most tenanted Houses, the Astrologer deduces the fields of activity that are most relevant to you, be it because of what you are experiencing, or what you may experience in the future, or because of your deep inner motivations.

Your 9th house being one of your most tenanted house, or at least emphasized, travels and faraway places play a major role for you: travels may take place in a symbolic sense, namely mind speculations or conceptions about political matters, philosophy, religion or spirituality, or in the literal sense, such as real long distance travels by plane. It may also be that you spend a part of your life far from home, etc. You are driven by some kind of rebelliousness, which urges you to explore the Unknown; it may also be the call of the adventure. Besides, if the rest of your chart concurs, you may be considered as a real draught, often up hill and down dale, constantly on the lookout for exciting discoveries and new, enchanting horizons.

With a dominant 1st house, your magnetism is powerful, and your individuality as well as your willpower are out of the ordinary. You are a determined, strong-willed, and assertive person, with this relative criterion at least.

It is likely that you never go unnoticed when you are in a crowd or a in reunion: an important 1st house suggests that you are a charismatic person with above average vital energy, especially if the Sun is present in this sector.

Your personal interests are always important and you never forget them, which doesn't mean that you are self-centered, but only that you behave according to what is in harmony with your deep nature!

With a prominent 10th house, your destiny's achievement may be very notable: the 10th house represents your career, your public life, and your ambitions. A good deal of your energy may thus be used to successfully implement what you have in mind. Instinctively, you are very keen to make your dreams come true. Sooner or later, you will deal with the public, and your personal achievement will go through trials and ordeals: other people and visible actions.

Your Style, Behaviour, and Peculiarities

What is commonly known as "sign" indicates the position of the Sun in the Zodiac. The Sun highlights all the characteristics of the sign he tenants. According to astrology traditional rules, these characteristics are all the more pure and exact when the Sun is strong in the sign, or when the sign is particularly highlighted within the chart. Here, we indicate the pure characteristics of the sign but you must bear in mind that they may only shed a light on a particular aspect of your personality. Indeed, the sole sign of the Sun, or of the Ascendant, can never describe an astrological chart because it depends on the degree of strength of the said sign in your chart.

Another important point must be underlined. Contrary to the Ascendant, which clearly describes your appearance, your vitality, your physical constitution, your spontaneous behaviour and the image you project, your Sun sign describes your inner self, which you may not completely be aware of, and which may emerge gradually as you mature: it is about your inner personality that you reveal only to the members of your entourage whom you trust. The Sun sign is likely to be the final form of your personality, once it has evolved in line with the energies of the other parts of your chart, the beginning of which is seen in the Ascendant, your external "bark".

The Ascendant is one of the major components of your natal chart. It is the zodiacal sign that rises in the East at the very moment of your birth. To calculate it, it is therefore necessary to know your exact time of birth.

It provides with a wealth of information on your personality. It is one of the key features that allows the analysis of several parts of you, such as your appearance, your character as it is initially perceived and your immediate behaviour. It describes the external aspect of your personality which you always display, but it also describes your physical constitution in the long-term, in other words, your health.

Please be aware that, in spite of the importance of the Ascendant, the accuracy of its description depends on how strongly highlighted it is in your natal chart. We use the entire set of astrological rules to assess the strength of the Ascendant. In most cases, the Ascendant is as revealing as your "sign", i.e., the sign where the Sun is posited at the time of birth.

You were born under the sign of Scorpio and your Ascendant is in Capricorn

Before broaching the details of the meaning of your Sun and your Ascendant, as a preamble, we offer a brief generic interpretation of their combination in your chart:

The Lord of Darkness... More seriously, one cannot say that you display a catching enthusiasm, except when you pursue your goals or an obsessive idea, in which case you are unavailable for anything else. The cold reserve of your Capricorn Ascendant conceals a volcanic nature. Scorpio and Capricorn share many common features, such as honesty and strategy skills supported by unfailing patience. They also agree on the importance of self-control and the need to ruthlessly eliminate anything superfluous, through provocation for Scorpio, and through tough indifference for Capricorn. Cynical, you? Or perhaps pessimistic? Sometimes, yes, but it is because perfectionism and ambition forbid any kind of leniency with yourself, as well as with others. Although you are reserved and clumsy, you try to get closer to other people, and you offer them all the energy and the passion which are smouldering beneath your thick

shell. Of course, they must be deserved...

You were born with the Sun in Scorpio

Psychologically speaking, your nature is bilious, with aggressive impulses that lead you towards the transformation of your entire being and, continuously, of the situation surrounding you. You seem to be constantly struggling for your self-assertion. You cannot refrain from testing others with cutting remarks, not because you want to hurt them, but because you want to know them better through their reaction; for you, life and the feeling of aliveness are experienced through rebellion and tension. You may be manipulative and your aggressive attitude may equate with sly inquisition. You often remain silent, introverted and secretive, mulling over turbulent thoughts in the depths of your mind, leaving others puzzled by your somewhat peculiar behaviour.

As you are born under this sign, you are secretive, powerful, domineering, enduring, intuitive, assertive, charismatic, magnetic, wilful, daring, clear-sighted, passionate, creative, independent, vigorous, generous, loyal, hard-working, persevering, indomitable, possessive, shrewd, stubborn, ambitious, instinctive, tenacious, sexual, sexy, proud, intense and competitive. But you may also be aggressive, destructive, stubborn, anxious, tyrannical, perverse, sadistic, violent, self-centered, complex, critical, cruel, nasty, jealous, calculating, vulnerable and dissembling.

In love, Sir, you are very magnetic, with a discreet and indefinable charm that inevitably attracts the persons you set your heart on. You detect their weaknesses so well that you can, at will, exert your powers and your manipulation tendencies over them. There are no negative consequences, as long as things go well, because you are very sensual, charming, possessive and swaggering and you make happy all the people who look for this domineering aspect in their partner. However, when things start to deteriorate, your almost pathological jealousy and your capacity to harm when you feel threatened are the causes of your partners' tears.

For you, passion means tension and tragedy. It is the price to be paid for sharing your sexuality loaded with unlimited fantasies, male ardour, loyalty and generosity. You are excessive, but very endearing, and your partner finds it very hard to leave you. It is preferable when things are fine between you.

Your Ascendant is in Capricorn

Psychologically speaking, your nature is introverted and cold, totally controlled and phlegmatic, at least regarding the image you project invariably. You seem unemotional and austere. Actually, due to your secondarity, you chew over your strategies or your reactions required by your environment. You are slow but very thoughtful, solid and balanced. You are as curt as you are cold and you put the entire strength of your character at the service of your huge and long-term ambition or of your detachment from earthly riches and you focus on spiritual values.

Like all the persons born under an apparently reserved and tough sign, your inner personality is often charming and gentle, as if the thick armour, forged throughout childhood, had entirely preserved the purity and the warmth of the soul imprisoned within.

As you are born under this sign, you are serious, cold, disciplined, patient, focused, thoughtful, ambitious, indomitable, cautious, lucid, persistent, provident, steady, introverted, stern, wilful, hard-working, responsible, persevering, honest, realistic, loyal, reserved, resolute, moralistic, quiet,

rigorous, attached and reliable. But you may also be curt, withdrawn, calculating, petty, cruel, unpleasant, ruthless, selfish, dull, rigid, slow or sceptical.

Sir, in love, you may feel less interested than the other Zodiacal signs because you repress your feelings and you practice so much self-control. You want to keep situations under full control, in all circumstances, although love is the only area where progress requires a laid-back attitude, where it is necessary to give in order to receive, all things which are difficult for you.

Therefore, you are alone for a long part of your life until you meet with the love of your life, to whom you will be faithful and attached, beyond reproach. Capricorn has very few but intense and lasting love affairs.

Daily life within your couple is responsible and serious. It may not be too bubbling, but your feelings' sustainability and solidity make for your lack of spontaneity and extravagance. You may not be very available, as all your time is taken up by your work and the pursuit of success. You are very keen to marry a person who can share your professional interests, which does not lessen the quality of your attachment at all.

Your home is sound, with an atmosphere of seriousness. The effort-oriented education, which you give your children, is respectful of the best traditions.

The ruler of your chart is in Capricorn

The ruler of the Ascendant, also referred to as the chart ruler, brings a few interesting nuances to the meanings provided by the Sun and the Ascendant. The sign in which the ruler of the Ascendant is posited fine-tunes the style of personality described by the Sun and the Ascendant. It may strengthen it if the sign is identical to either of them.

The ruler of your Ascendant is in the same sign as your Ascendant. This specific feature means that the characteristics previously delineated for your rising sign are strengthened.

Aspects to your Ascendant

Several planets form an aspect with your Ascendant, Florent Pagny. Therefore, in their specific way, they modify your behaviour and your personality, which do not take on the pure characteristics of your Capricorn Ascendant only, but which are a blend of its characteristics with those of the said aspects.

★★★★★ Uranus trine Ascendant, orb 0° 06'

Uranus is in soft aspect with your Ascendant, Florent Pagny. Although your behaviour is original, nonconformist, and free, it is not unpleasant. On the contrary, this facet of your personality is sometimes considered by other people as endearing and unpredictable, in the good sense of the word. One never gets bored in your company because you are often found where you are not expected, whether regarding your ideas, your lifestyle or the way you react. You possess the charm independent and free persons are endowed with!

★★★★★ Jupiter semi-sextile Ascendant, orb 0° 02'

Jupiter in soft aspect with your Ascendant naturally endows you with a reassuring, calm, and benevolent side, Florent Pagny. You honour your commitments without qualms, and thanks to your heart of gold

and your generosity, your behaviour is protective and nice. You like to please other people, and whenever it is possible, you enjoy finding compromise solutions to all problems.

★★★★★ Mercury sextile Ascendant, orb 5° 13'

You are endowed with quite good adaptation capacities, Florent Pagny. Thanks to Mercury, your behaviour matches your intellectual concepts, or your style of communication, which is quite an effortless one.

★★★★★ Sun semi-square Ascendant, orb 1° 28'

There may be a contradiction between your will and your external appearance, Florent Pagny, which slows down your natural spontaneity and in some circumstances, gives rise to doubts regarding your behaviour towards other people and the need to be true to your own beliefs. There is certainly nothing serious with this minor dissonance between the Sun and your Ascendant, only choices that are to be made, so as to remain in harmony with yourself.

Your Sensitivity

You are sensitive to beauty, Florent Pagny, and your emotional reactions are often of an aesthetical order because, even in the appearances, balance and harmony are necessary for your well being. You easily identify with others, you have a talent for emphasizing their best qualities and you solve their problems with tact and diplomacy. You endlessly weigh the pros and the cons and you constantly try to please your interlocutors. In doing so, you may develop a strong dependency because you need their approval too much. It is difficult for you and your entourage to deal with your indecisiveness because it inclines you towards contemplation more than towards creation and you are tempted to procrastinate unless you try to charm others into doing things for you. But as long as harmony prevails... isn't it what matters?

Your emotions, Florent Pagny, prompt you to experiment what is faraway and foreign to your roots. You are indeed attracted by the unknown or by what is different from you, and it is mainly abroad that you realize that your emotions are exalted or that your popularity is enhanced. Besides, it is likely that your wife is a foreigner or at least, that you meet with her abroad.

Women may play an important role for your philosophical or moral training, or for your quest of knowledge and expanded horizons.

★★★★★ Moon conjunction Venus, orb 3° 34'

The harmonious Moon-Venus aspect is an element of intimate balance that favours sensual and affective fulfilment. The search of well being includes all kinds of emotions and feelings. You love, you enjoy life in simple ways and you arouse your entourage's affection. The persons belonging to your inner circle are also objects of desire and pleasure. Tenderness and love are probably one and only thing: you are moved by the gestures of affection provided to you and by the daily acts which strengthen two persons' mutual attachment. Whereas other people dread routine, in your case on the contrary, it increases your amorous feelings. You loathe all kinds of violence, particularly in your intimate life. The danger of this planetary configuration may be your constant changes of mood: whims are often on the agenda... and your will is quite weak. One last point: this aspect is frequently found in the charts of people with an aesthetic or artistic sensitivity.

★★★☆☆ Moon square Saturn, orb 4° 04'

When this aspect is not well integrated, there is no feeling of integration and security. You feel that you are not understood or even, that you are rejected. It is difficult for you to find inner peace and tranquillity. You lack the quietness and the primordial confidence that would allow you to lay back and to be carried away and pampered by life. This configuration indicates questionings and doubts regarding the unconditional affection that each individual longs for. You do not trust the world. You tend to dismiss social models, as well as your close friends' attachment and tenderness, probably because you need to test them and to get the feeling of being loved that you naturally lack. It would be a mistake not to see that you desperately need affection. You are particularly vulnerable to relationship flaws and you strive to find the gestures of love that would allow you to let go and to be nurtured by life. In such a context, the sincerity you display, as you give or refuse your trust, is highly commendable.

Your Affectivity

In your chart, the Sun is in Scorpio and Venus, in Libra. Your solar and Venusian signs follow each other but they are not alike: Scorpio's continuous will to call attention on himself opposes the associative nature of Venus in Libra. Your dearest wish? To live in perfect harmony with your partner, each one being the reflection of the other, one's double. Without connivance, without closeness, how can your wish be fulfilled? You love the persons who resemble you and, as time goes by, you learn to get closer to the people to whom you give. However, in the long run, you find it hard to keep on heading in that direction. The passionate atmosphere you need may exclude the quiet situations that your heart is so crazy about. You must show your difference and your specificity. In doing so, you can provoke the offensives without which your love life would seem unbearably dull! Your clear-cut, sometimes biting attitudes add spice to the game. More than anyone, you know how to alternate moments of affective intensity with unbridled passions and with calmer hours dedicated to the enjoyment of idyllic reconciliations.

Florent Pagny, it is impossible to hide it: to love, to be loved and to please, all these activities are at the centre of your life. Because you loathe solitude, you are constantly looking for company, and if possible, for an amorous company. It does not mean that you are full of passion all the time: you are refined, delicate and charming and you skilfully make use of customs with moderation and balance, without losing sight of your personal interests. You are ready to adjust and to compromise in all circumstances. You want to love and to remain integrated in your society: love gives precedence to propriety, which is fundamental to you. You are particularly gifted for this game of refined courtesy and politeness where appearances are at least as important as contents; you are able to show what you feel like showing and you achieve your ends with elegance, gentleness and goodness. These are precisely your main assets.

Florent Pagny, the choice is yours: love encountered while travelling abroad, or just love for travels and focusing your feelings upon this ideal of evasion towards far-off lands? Or may be both. In any case, you often tend to fall in love, and even to get married, with a person of foreign origins. Exoticism and difference mysteriously appeal to you and there is little you can do against it. Early in life, you have a craving for space and for changes, particularly regarding your feelings: there is not a single chance that you are content with habits or that you refuse any new and exciting experience full of unusual and unknown features. You are always on the move and you feel so great when you finally find yourself in a ship at the other end of the world or somewhere in an airport, with all your senses stimulated, ready to be seduced by the unusual charm of the person whom you will meet and who will not resemble you. Your feelings are vast and generous, sometimes even sublimated and idealized because you so adamantly refuse any limitation. You have an undying thirst for higher knowledge that can only be gained in the field of spirituality or, in the literal sense, through roaming about remote lands, or also analogically, through interacting with culturally different people who have so much to teach you. Your feelings are coloured with the distinctive nobleness and long-term vision that characterize broad-minded persons who do not look at things with an ego-centered and simplistic glance. It is true that, seen from an airplane, the authenticity of all things important stands out finally with more acute sharpness...

★★★★★ Mercury conjunction Venus, orb 1'

This aspect sensitizes you to games of seduction. You like to multiply romantic undertakings, you invent new reasons to seduce or to be seduced. Although your romantic life is not a model of stability, it is full of discoveries, varied emotions, both sensual and cerebral. You know how to earn your entourage's liking through your acute sensitivity. You play around with feelings, with relationships and with love... Mercury and Venus commonly share the capacity to sensitise to human topics. Your receptivity towards

others is high. Your broad-mindedness goes hand in hand with your heart's generosity. You pay particular attention to the way people look at you and the effect you make when you meet or exchange with someone. Actually, you expect a lot from others: acknowledgement of your qualities, as well as esteem and consideration. You may also be touchy beyond what you may give to think. In many instances, relationship games may turn out to be more serious than expected.

★★★★★ Venus square Saturn, orb 0° 3'

This Venus-Saturn dissonance indicates a demanding, complex and often challenged affectivity. You are wondering about the meanings of love, pleasure and emotions. Your passions take an absolute character right away. No compromise, no sham must stain your sentimental life. In such a context, doubts abound. This aspect prompts you to review the roots of your affectivity, so as to find the assurance you lack and to soothe your dormant sentimental anxiety. Love is an eternal and endless quest. Because you are doubtful of the affection people have for you, you may never feel that you are really loved. Your affective behaviour reveals your uncertainties: tests and challenges follow one another until, eventually, you are certain to experience a love that meets your demands. It is obvious that on the sentimental area, you are not looking for the easy way out.

★★★★★ Venus square Jupiter, orb 6° 17'

This Venus-Jupiter dissonance indicates a strong will to seduce. However, there may be discrepancies between your words and your actions, as well as between your behaviour and your instinctive reactions. You may be carried away by a maelstrom of emotions, feelings and pleasures and you do not consider the possible consequences of your superficial attitude. Therefore, the apparent state of grace may turn into delusion. Proprieties and necessities of the moment forbid you to experience your desires. What you deem reasonable does not suit your heart's impulses. What a dilemma... Hopefully, as time goes by, you may reconcile your desires, your life patterns and the reasons of your heart with those of your mind.

★★★★★ Venus semi-square Pluto, orb -0° 46'

Nothing is simple in love. You consider your love life with a distant and remote glance. You do not believe in obvious, transparent relationships. Love is a complex issue and its machinery is beyond you. To avoid delusions and indifference, the rules must be changed. Your feelings are alternately cruel and passionate, distant and burning, often paradoxical. Are you the executioner or the victim? Power struggles are omnipresent in your affective life. You seem unable to take life as it comes and to love without asking yourself questions, without doubting. You often love those who are indifferent towards you, while you despise those who love you. It is important that you change your attitude if you want a smooth and happy life. Rely on your forte: an indisputable lucidity that makes it impossible to delude your heart.

★★★★★ Venus semi-sextile Mars, orb 0° 39'

With this aspect, innate affective behaviours prevail over opportunisms and calculations. You do not cheat with feelings and you prefer to be guided by your likes ... or your dislikes. Love is neither to be reasoned upon nor to be explained. It is important to experience one's passions spontaneously and to give free rein to the heart's tumultuous manifestations as well as to the body's demands. In other words, to be one's true self in the "now". You need to live intensely, to try all kinds of situations, sometimes to get hurt. Your sensitivity is the driving force behind your decisions and your actions. Real experiences are worth the best intellectual concepts. Spurred by your thirst for emotions, you try to build your life on bases that match your desires. Here, the trap may be that you pay too much attention to your moods and affects. But without them, life would be so dull. Even though emotionalism betrays you occasionally, it

remains your best ally.

The Way You Take Action and Your Sexuality

Your iron will is part of your assets, Florent Pagny. It is supported by an ingenuity and a skilfulness that may turn you into a mighty and feared personality. You have the knack of spotting weaknesses in persons you deal with and you can easily hurt them with your innate propensity to drill or to test their force. You are extremely stubborn and you never let go when you are convinced that you are right. Sexually, you are potent and passionate. You are domineering and secretive, with a magnetic personality. It is safer to avoid being taken in a conflict with you because you may be very aggressive and you bear grudges. In some cases, you may also be sadistic. Your personality is as secretive as it is domineering in the areas of action and sexuality.

It is in the area of friendship and collective life (common projects, associations, etc.) that you express your impulsivity, your warmth, and your capacity for action, Florent Pagny.

You are cut-and-dried and your motto is "either succeed or die". In case of success, it is your responsibility to make the relationship last because you are not the submissive type and you hardly compromise. You put a lot of passion in your friendly relationships. You are not interested in lukewarm or insipid acquaintances. Things must be moving, even though it may mean that the relationship is cut short.

In any case, you enjoy participating actively within a community and, whenever possible, you take the leadership role, in your own way. As soon as you are more or less under the public eye, you become enterprising. When you are on your own, you do not feel the need to use your energy.

★★★★★ Mars sextile Saturn, orb -0° 09'

Persistent action always bears fruit eventually. All that is needed is patience... A quality you have, undoubtedly. As confrontations become unavoidable, you show strong persistence and indisputable perseverance. Potential obstacles are more stimulating to you than they are discouraging. You are naturally fit for effort and for confronting realities and facts. You quickly overcome difficulties and you respond to crises in an efficient and considerate manner. You are enduring. You handle events with rigour and precision. These are valuable qualities nowadays, for they often come with the capacity to undertake adventurous experiences and to take limited risks!

★☆☆☆☆ Mars square Uranus, orb -5° 28'

This Uranus-Mars dissonance indicates frequent commotions. Your actions may be foolhardy and thoughtless. You may not control your temper and you let impulsiveness take over logics. This brings about drastic, whimsical or untimely decisions. There is no monotony in your life: thunders and tyrannical behaviour are on the agenda! Your fighting spirit certainly allows you to cope with life hardships. Nevertheless, beware of damages. As one wants to act as a hero, one can make mistakes. Because forces are overestimated or because inflexibility forbids compromise solutions. Therefore, it is important to balance your decisions and to avoid solutions that are as final as inappropriate.

★★★★★ Mars sextile Jupiter, orb 5° 37'

Coordinated action wins over almost all obstacles! You mobilize your energy and your fighting spirit advisedly and you take timely action. This is the reason why you are efficient in situations requiring courage, determination, swift responses and diplomacy, altogether. You do not fear confrontations but you never provoke them unnecessarily. You take advantage of your chances and you adjust your behaviour to concrete situations. You empirically handle events with relevance. The only danger is that you may be overzealous to seize any opportunity... even those that are not necessarily good in the long run. You should take the time to carefully consider the facts and their consequences. The swiftness of your reactions must remain an asset.

Your Intellect and Your Communication Style

Your thought process is rather slow because you need time and tranquillity to review everyone's ideas and opinions, to weigh the pros and the cons and to eventually take the most equitable decision. You reject all fanatical and extremist behaviours and you are always in search of the happy medium. Your tolerance, your sense of logic and your negotiating skills are acknowledged but your indecisiveness and your propensity to procrastinate are often criticized. Therefore, you may need to be encouraged and to be nudged into action, in order to offset your fatalistic attitude that may be likened to laziness. Do not seek other people's approval so constantly, express yourself more and take action...

You have a roaming mind, Florent Pagny, in the best sense of the term: you are interested in higher knowledge, whether in the moral, spiritual, political or religious field. You are attracted to what is far away and you want to travel to discover new horizons. It is possible that, early in your life, there was a kind of rebelliousness against preconceived ideas and sometimes, against the education within your family.

You have broad and open ideas. No petty or too concrete thoughts for you! Going further and higher is what matters to you. In accordance with your childhood aspirations, as an adult, you are a great traveller, both in mental travels and physical ones. In all cases, the foreign world's riches stimulate you.

★★★★★ Mercury square Saturn, orb -0° 3'

This Mercury-Saturn dissonance does not allow for simple and spontaneous relations. Your vision of the world is complex. You are sensitive to the fragileness of human relations and you are doubtful of transparent situations. You need to look for hypothetical calculations and you suspect that unclear reasons are underlying beneath dialogues and encounters. Your sociability is limited. You are a loner because you dread relationships and you trust very few people among your close friends. You ask yourself more questions than you can find answers! Therefore, you are on the look out, troubled by the unknown. Everything is subjected to your questionings. It seems difficult to find certainties and to be satisfied with commonplaces that cannot soothe your doubting mind. The forte of this aspect is that it brings about undisputable capacities for discernment. Although your lucidity may hinder your relations, it also grants a lasting protection against gullibility. By nature, you belong to the category of the sceptics!

★★★★★ Moon conjunction Mercury, orb 4° 35'

Curiosity is part of your nature. You perceive everything with sharp acuity. You increase your attempts to establish connections and to exchange opinions and information, particularly when you are in a familiar and intimate context. When this configuration is well integrated, it underlines the multi-faceted nature of

the mobility that defines your behaviour and your living conditions and endows you with strong adaptation abilities. You also show a remarkable gift for improvisation and you pick up the quality of the atmosphere so swiftly that you get off any tricky situations. However, you must keep your adaptation capacity under control because when it is overdeveloped, it may become an agent for instability.

★★★★★ Mercury square Jupiter, orb 5° 16'

You play with social norms and you scoff at them. Your morality is seldom questioned: you adopt the most rewarding behaviour, precisely the one that wins you your entourage's consideration. But you sometimes cheat. You are an opportunist and you act according to circumstances, particularly because your moral stand is only a superficial mask. You enjoy concealing your beliefs: life is a social game and you change its rules to suit your convenience. Your flexibility and your adaptation abilities are appreciated. However, it is important that you do not behave inconsistently. A stable and transparent course of conduct may help you avoid many pitfalls or delusions. Beware of words spoken thoughtlessly, of empty promises, and do stick to your indisputable cleverness.

★★★★★ Mercury semi-square Pluto, orb 0° 13'

Forget simplicity! You definitely enjoy acting behind the scenes and dealing with what is going on underneath. You play games and you operate in the dark. You leave the front of the stage to others and to the gullible ones. You don't display much sociability. When you are nice, it is because you are looking for flaws. This Mercury-Pluto dissonance mingles unconscious fantasies with reality. When it is kept under control, this aspect becomes an unparalleled source of discernment. To that aim, you must overcome your strong tendency for provocations. It is certainly amusing to play destabilizing games but it may also be dangerous. Keep this treatment for your opponents only.

★★★★★ Mercury semi-sextile Mars, orb -0° 2'

The harmonic Mercury-Mars aspect is the signature of a quick wit and an energetic character. You take decisions rapidly and you implement them straight away. You never accept stiff situations. You need to design, to take action, to fight to express your acute sense of relation: the world, the people, everything is of concern to you... You need to be involved in relationships and in dialogues. Your sharp retorts earn you a reputation of straightforwardness. On the relations' area, your quick wit and your mobility are greatly appreciated. You find the allies and partners you need at the right time. An art of resourcefulness that is precious...

★★★★★ Mercury sextile Uranus, orb -5° 07'

Your state of mind is innovative and turns the surrounding world into a constantly moving field of experiences. You ask relevant questions ... and you answer them. Although you are flexible when you ought to, your principles and your beliefs are unwavering. It seems difficult to catch you off your guard. You multiply observations, relationships, contacts and you never lose face: actually, your mobility hides an unshakable determination and a deep lucidity. In a split second, you are able to catch the useful information or the enriching relationship. The original and fanciful steps you take exclude monotony. Your approach to life is amazing!

Your Goals, Motivations, Career, and Destiny

Your Sun is posited in the 10th House

Florent Pagny, your need for assertion is very strong. It is clearly oriented towards the success of your professional or social destiny, or at least, towards an important rise compared to your initial background; your effort, your will and your goals are well defined in your mind: you have a concrete vision of the kind of destiny you are interested in and you do not want to stay on the backstage! Because in traditional astrology, the Midheaven relates to the mother, should other configurations of your chart concur, your mother might favour your ambition or speed up the success of your career.

You have an innate sense of commandment and a definite taste for honours, prestige, recognition of your self-worth. You don't like vagueness and your objectives are very concrete. You want to quickly leave anonymity and the quietness of the dark, for which you have no affinity. Your determined attitude, and your irresistible desire to play an increasingly important role in the position you hold, are major assets for the actual achievement of your goals. You want to shine forth and to heave yourself up, always higher and higher.

There are real indications of fame, provided that other elements of your chart concur. Even though you did not rise to fame, it is likely that, in your area, you enjoy some degree of glory. You are efficient and, with the help of your organizational skills, it is not difficult for you to find your spot in the sunshine.

In some rare cases, your ascent goes beyond the average ones and it may occur on the spiritual plane instead of the professional or the social plane. Therefore, you may be called upon to play a solar authority role in line with your beliefs and your commitment. You may become a leader or a master in the path you have chosen.

Even though you may hesitate to admit it and to tell others, your frenzied inclination for success inevitably brings about conflicts of authority; striving to heave yourself up, too high and too quickly, to a level that is so different from the one you were at, not so long ago, exposes you to clashes with the hierarchy or with those whom you regularly outgrow in the course of your ambitious journey and who may not agree with you.

There is also the fearsome and dormant danger of exhilaration of power and its disastrous consequences; hopefully, you do not have to jump into it with both feet. A fair dose of detachment and meditation may spare you many a trouble.

The ruler of your chart is in the 1st House

The ruler of the Ascendant, also referred to as the chart ruler as explained in a previous chapter, is also posited in one of the twelve Houses of the chart. Just like the Sun in its House, the ruler of the Ascendant provides certain abilities, or it makes you appreciate more keenly certain areas of life.

The ruler of your chart is in the 1st House, Florent Pagny. It strengthens your self-confidence and enhances your charisma as well as your magnetism. You do not shirk from taking personal decisions, and you forge ahead fearlessly. This configuration provides strength rather than interest in a specific field.

Aspects influencing your ambitions

Regarding your destiny or your career, the following aspects of your natal chart allow to fine-tune what has just been said above:

★★★★★ Sun conjunction Neptune, orb 2° 37'

This harmonious Sun-Neptune aspect indicates a highly developed intuition and clear-sightedness and sometimes, a sixth sense. Mental images or information drawn from the unconsciousness impress your mind. What was only a muddled feeling turns into certainty and deep conviction. You do not necessarily need to justify your attitudes: you take a decision because you feel that you have to do so, although you may not control the underlying logics. The danger is that you may follow fanciful or adventurous roads. Beliefs you cannot explain may prove wrong or over-optimistic. However, your intuition is seldom misleading. One last comment: there is often a keen curiosity for the « bizarre » and the paranormal with this planetary aspect.

★★★★★ Jupiter square Midheaven, orb 0° 27'

Jupiter, the planet of law and social achievement, is in mild dissonance with your Midheaven, Florent Pagny. You may experience difficulties in climbing up the steps of your social status, or in having your true worth fully recognised. There is definitely nothing serious to worry about. It is up to you to remain self-confident and not to be too impatient. With effort and perseverance, you can reach serenely the goals you have set for yourself. The only mistake you must avoid with this configuration is to jump the gun and to forget hierarchy and laws, or just to underestimate the work you must put in to that end.

★★★★★ Uranus sextile Midheaven, orb -0° 18'

Thanks to this soft aspect of Uranus to your Midheaven, Florent Pagny, you are endowed with the gift to let yourself be carried away by the changes cropping up on your way. Instead of being disheartening, modifications affecting your professional or social environment... stimulate you! Then, you may show opportunism, in the good sense of the word, and throughout your life, you may experience strokes of good luck, the consequences of which can be increased, thanks to your talent and your lack of fear whenever you face newness.

★★★★★ Mercury conjunction Midheaven, orb 4° 49'

With Mercury in conjunction with your Midheaven, Florent Pagny, it is obvious that your style of communication and your thinking process reliably serve the interests of your social ascent. The subtlety of your mind works wonders in society. You adapt yourself quickly, which favours your career and your ambitions in general. Your career or your social destiny may be linked to Mercurian values, meaning anything that has to do with communication, exchanges, dexterity, and short trips: journalist, recruiter, writer, television presenter, lawyer, postman, conjurer, juggler, reporter, advertising executive, real estate agent, consultant, etc.

★★★★★ Jupiter conjunction Saturn, orb 5° 47'

Jupiter and Saturn are favourably linked to each other in your natal chart. The Tradition indicates that this planetary aspect is a good omen for your social success and good integration in the society. Indeed, Jupiter stands for public life, respect for laws and hierarchy, and acceptance of established rules, whereas Saturn symbolises wisdom, time, seriousness, and perseverance. Therefore, it is only logical that with this Jupiter - Saturn configuration, your career, or your social destiny if you do not work, is well thought of by society, and that you are most likely to experience its happy outcomes sooner or later.

★★★★★ Venus conjunction Midheaven, orb 5° 49'

With Venus in conjunction with your Midheaven, Florent Pagny, it is all your natural warmth, or just your natural way to express your feelings, that is well received in society. This usually enables you to shine with happiness in your professional circles, or to accomplish your social destiny with reliable assets. It may be that a female, or the fair sex in general, favours your career progression and helps you because your personality arouses spontaneous sympathy. The professions you thrive in are of a Venusian nature, meaning that you deal with the world of beauty, the arts, pleasures, fashion, aestheticism...

★★★☆☆ Saturn square Midheaven, orb -5° 19'

Saturn is in dissonance with your Midheaven, Florent Pagny. Of course, nothing really serious is to be feared. It is just that sometimes, you feel that an unfair slowness keeps on delaying the achievements you deem that you deserve right now. You must work twice as hard to climb up the rungs of success, and above all, you must not get disheartened. Effort is one of the values you must work on, and it is a punishment by no means. It is obvious that your goals are achievable, but you must remain on the right track and show perseverance. That's all!

★★★★★ Sun sextile Pluto, orb 3° 59'

This harmonious Sun-Pluto aspect indicates an exemplary clear-sighted mind. Without destabilizing your appearances or your personality mask, Pluto makes you aware of your subjective and questionable character, as well as of your manner. You never take yourself completely seriously. You have a good grasp of human nature's complex games, without gullibility, without excessive simplification. Because you can perceive hidden elements underlying any situation better than anyone else, you are acknowledged as perspicacious. This aspect allows you to distance yourself from difficult circumstances and to remain impassive when you must overcome pitfalls.

★★★★★ Moon conjunction Midheaven, orb 9° 24'

The Moon in conjunction with the Midheaven receives good press, Florent Pagny. She indicates potential fame, or in any case, some degree of popularity. Your sensitivity is well perceived and, above all, it perfectly fits your professional destiny and your social ascent. Females may greatly influence your success. Your social status or your profession may be tightly linked to lunar values, such as frequent contacts with the crowd, children, women, daily matters, imagination, school, administration, leisure and sports for children, hotel and restaurant industry, bakery, poetry, the arts...

★★★★★ Sun quintile Saturn, orb -1° 15'

This aspect indicates a firm and discreet will, a rigorous and objective character. You are clear-sighted, particularly in difficult situations. You enjoy the moments of calm and solitude during which you can review your life at will. Your judgments are enduring and often extremist. You are outraged by injustice and inconsistency. When a problem arises, you do not take the easy way out with short-term solutions, on the contrary, you strive to solve the issue thoroughly. Better than anyone else, you challenge yourself, you review your choices and your attitudes. This is the reason why you are capable of handling crises and of overcoming any obstacle that requires an in-depth and relevant response. You may lack spontaneity but your behaviour reveals your wisdom. When you are facing an issue, you put forward the good question, to others, but also to yourself.

Your Assets and Your Part of Joviality

Your mental activity, your enthusiasm when you handle your projects, especially the collective ones, are very favoured by this planetary configuration: one of your best qualities, Florent Pagny, is your capacity to be integrated in a group and at the same time, to keep your originality intact. As a natural consequence, your friendships are favoured and your protections last throughout your life.

Florent Pagny, Nature gives you a nudge in the right direction and endows you with enthusiasm and generosity, contributing to your charm and dynamism. You are attractive, and you hold sway over groups. Your physical appearance is that of a jovial and charismatic person.

The planet Jupiter symbolizes expansion, broadness and generosity. Jupiter is associated with the functions of synthesis, enthusiasm and optimism. In your natal chart, his house position is more important than his sign position because, like Saturn, Uranus, Neptune and Pluto, he is a slow planet. Many people born in the same period have Jupiter in the same sign. This is the reason why the sign occupied here is less meaningful than when it is occupied by the so-called fast planets, i.e. the Sun, the Moon, Mercury, Venus and Mars. Therefore, some caution is to be exercised as you read what follows.

Jupiter in Aquarius stimulates your mental activities and favours the area of collective or humanitarian projects. In these fields, you can easily assert your originality and develop your interests for new topics and unusual things in general: sciences, higher technologies, but also esoterism, astrology and occultism. Your friendship life is favoured too by this configuration.

Your Serious Side

Precision, slow progress, huge concentration capacity, and exceptional but... hidden ambition are your features. With time, you acquire the ineffable certainty that your values will be acknowledged and that your organizational abilities as well as your long-term aims are the keys to your success.

Solemnity, seriousness and discipline are your keywords, Florent Pagny. It is difficult for you to relax, and it is most likely that at the beginning of your life, you are shy, quite introspective, and distant. You may be worried even though you have no reasons to do so. Your doubts may be overwhelming to the extent that they affect your vitality.

As time goes by, thanks to your strong will, your serious side becomes an asset for your success. You learn spontaneity, risk-taking, and lightness, and you are less concerned with the image you project because, in your heart of hearts, there already are hindsight, solemnity, and some sort of wisdom!

The planet Saturn symbolizes contraction, effort, time, limitation and concentration. Saturn eliminates anything that is not authentic, sooner or later. It is impossible to cheat him as he gives an irresistible desire to form a coherent whole with oneself, in responsible and wise ways. He is the great purifier. He represents our limitations but also our truth. In your natal chart, the house position where Saturn is posited is more important than his sign position because, like Jupiter, Uranus, Neptune and Pluto, he is a slow planet. Many people born in the same period have Saturn in the same sign. This is the reason why the sign occupied here is less meaningful than when it is occupied by the so-called fast planets, i.e. the Sun, the Moon, Mercury, Venus and Mars. Therefore, some caution is to be exercised as you read what follows.

Saturn in Capricorn is in his own sign, and according to the Tradition, he is most potent and at his best: he increases your toughness, your seriousness, and above all, your long-term management capacities. You are persevering, resistant, hard-working, ambitious and you are aware of the fact that time is on your side. Your reputation is that of a sober and stern person but you are respected and acknowledged for your wisdom and your authenticity.

A Few Special Points

Your Uniqueness and Your Utopias

Unexpected events and surprises often occur in quite special areas: finance connected to investments, to inheritances and, more generally, to external possessions or losses (taxes, stock exchange, other people's money), to the fields of occultism and death and, more symbolically, to sexuality.

In general, in one of these fields, you are likely to experience one or several reversals of situation (positive or not), on the material plane but also, as a consequence, in your approach to life and the way you transform your personality in depth.

In any case, you are predisposed to risk-taking, as if some inner force prompted you to create maximal psychical tension, or to challenge yourself in order to know yourself better, or to explore the unknown in a constantly deepening manner.

Your Inspiration and Your Illusions

This configuration indicates a significant probability that your professional destiny – even your general destiny – is linked to collective movements that are beyond you. They may constitute good opportunities to earn your marshal's baton.

Your certainties may be influenced by trends or by your osmosis with collective ideas, often because you are very sensitive to the "spirit of the times". The other side of the coin is that you may become only a representation of a collective ideal, or its victim, and be exposed to scandal or deception.

You have good predispositions for music, comedy and for anything that allows you to quench your thirst for emotions and fusion with the external world and with an audience.

Your Passion and Your Authority

In the sexuality area, you are very creative and you fear nothing. You are willing to experience your fantasies to the very end because you need to understand life's most secretive and mysterious aspects.

You are usually interested in occultism and in all topics that go beyond the everyday life framework: death and after-death, parapsychical researches, etc. You have a strong sixth sense and you intuitively understand at once things that are usually hidden and private.

Your material life may be disrupted by inheritances and gains stemming from happy speculations. In the

most negative cases, you undergo huge losses that are difficult to understand. In all cases, these upheavals are meant to transform your personality and your approach to life.

Your Isolated Planets

In general, the ten planets of the chart are connected to other planets by major or minor astrological aspects. It is owing to those ties that the planets' energies can manifest in the chart owner's personality and play out within safeguards according to a specific tonality.

It seldom happens that in a natal chart, a planet is totally disconnected from the nine other planets.

Astrologers have observed that when such a case occurs, the person feels the energy of the unaspected planet in quite a singular way, very jerky and powerful at the same time. Thus, for instance, the famed astrologer Jean-Baptiste Morin de Villefranche wrote that "an unaspected planet heralds that something strange or extraordinary will take place regarding the meanings of the house in which the said planet is posited" (source : l'astrologie selon Morin).

Rules for detecting an unaspected planet: among all the testimonies that we have reviewed to this day, based on our experience, we tend to agree with American astrologer Janis Huntley who accepts seven aspects, which involve the zodiacal twelve sections of 30 degrees. The aspects to be considered are the conjunction (0 degree, cooperation or tension), the semi-sextile (30 degrees), the sextile and the trine (60 and 120 degrees respectively, aspects of cooperation), the square and the opposition (90 and 180 degrees respectively, tensed aspects), and the quincunx (150 degrees, slightly tensed). In this detection, the chart's angles are not taken into account.

In any case, it is important to remember that an isolated planet clearly expresses its influence when it is a personal planet. Thus, when the Sun, the Moon, Mercury, Venus, or Mars is isolated, it is certain that the effects described by Jean-Baptiste Morin de Villefranche will become manifest. As for Jupiter, Saturn, Uranus, Neptune, and Pluto, one must be cautious because the volume of cases documented is not yet large enough.

Your chart has no isolated planet, and this particular case does not apply to you.

Annex 1: Your Minor Dominants

The five following dominants are less significant than those described at the beginning of your report. They may not be strongly felt. In some cases, they add several minor details to the analysis of your character, but they are rather for curiosity purposes. It is not necessary to take them into account when you first read your portrait.

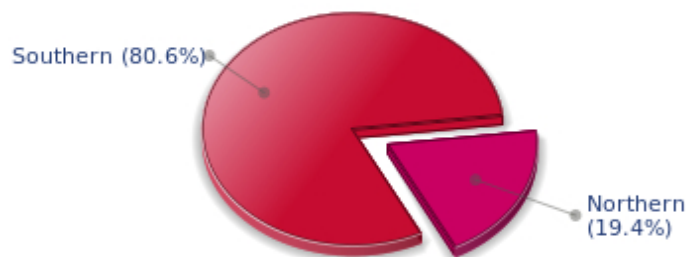
Your Planetary Repartitions: Northern, Southern, Eastern and Western Hemispheres

The axis linking the 1st house's cuspid (the Ascendant) to the 7th house's cuspid - the Descendant - divides the zodiac into two bowls, a superior bowl, in the South, and an inferior bowl in the North. Quoting an expression by the famous American astrologer Rudhyar, the Southern part and the Northern part correspond to two functions: "being" and "doing". Other concepts are also associated with this North and South distribution, such as introversion - Northern hemisphere - and extraversion - Southern hemisphere - being or appearances, inner life or external life, reflection or action, dreaming one's life or living one's dreams, the abstract or the concrete, backstage or limelight.

This is not about determination but about personal inclination: thus, some people will be thrown into public life despite a prominent Northern hemisphere. If this happens, however, it will not be due to their will, their taste or their deep nature. Conversely, a prominent Southern hemisphere will not bring about a famous destiny to its owner, even if he tends to turn the spotlight on himself, or if he looks for a more active life. It is a matter of deep nature and natural inclination. Of course, none of the typologies is "superior" to another.

In your birth chart, Florent Pagny, the ten main planets are distributed as follows:

Your Northern and Southern Hemispheres



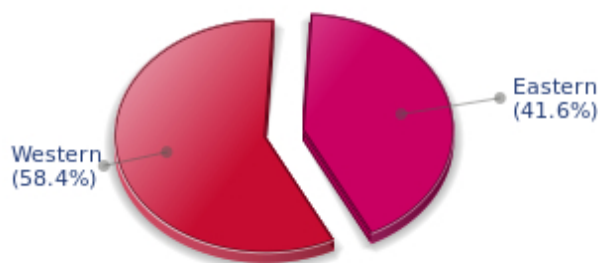
Florent Pagny, the predominance of planets in the Southern hemisphere prompts you to take action, to draw attention on yourself, and to make your actions and what you have in mind visible to everyone. Sometimes, without giving a single thought to, and to the detriment of, a richer inner life and a deeper and wiser reflection. Action and communication are inevitable in your opinion, and you tend to think that the only thing that matters is what is seen! This is not always true, and it is up to you to progress through the development of inner qualities such as meditation, solitude and imagination so as to become stronger.

The birth chart is divided into two other parts, Eastern and Western, by the axis linking the Midheaven to the Imum Coeli.

The Eastern part, on the Ascendant side, shows the person's ego, will, magnetism, and vitality, whereas the Western part, on the Descendant side, symbolizes other people, communication, relationships and their influence, as well as flexibility and adaptability.

Florent Pagny, here is the planetary repartition in your Eastern and your Western hemispheres:

Your Eastern and Western Hemisphere:



Florent Pagny, the East and West sides are well balanced in your chart. This means that you are not too determined or authoritarian, and that you are neither impressionable nor fragile. You are capable of taking decisions, in full awareness, without anyone's help when circumstances so require. However, you have no problem taking your entourage's viewpoints into consideration, with tact and intelligence.

Your Yin and Yang Polarity

The twelve signs are divided into two polarities, called active or passive, or sometimes masculine and feminine, positive and negative, Yang and Yin. This classification corresponds to two quite distinct tonalities, the first one bringing extraversion, action, self-confidence and dynamism, the second one, introversion, reactivity, reflection and caution. None is superior to the other, each group has its own assets and shortcomings. Odd signs - Aries, Gemini, Leo, Libra, Sagittarius and Aquarius - belong to the first group, whereas even signs - Taurus, Cancer, Virgo, Scorpio, Capricorn and Pisces - belong to the second group.

Your Yin and Yang Polarity



According to the disposition and qualities of your planets and angles, you are rather influenced by Yang energy, the active polarity, Florent Pagny: more concerned about actions than reflection, you sometimes rush without standing back and without the deepness that is needed. However, your spontaneity prompts you to take fresh starts, even after repeated failures caused by your rashness.

Your Houses' Accentuations

Houses are split up into three groups: angular, succedent and cadent.

The first ones are the most important ones, the most "noticeable" and energetic houses. They are the 1st, 4th, 7th and 10th houses. Their cuspides correspond to four famous angles: Ascendant for the 1st house, Imum Coeli for the 4th house, Descendant, opposite the Ascendant, for the 7th house and Midheaven for the 10th house, opposite the Imum Coeli.

Planets are evaluated according to a whole set of criteria that includes comprehensive Western astrology rules. At their turn, planets emphasize specific types of houses, signs, repartitions etc., as previously explained.

Your Houses' Accentuations



Cadent houses, namely the 3rd, 6th, 9th and 12th houses, are very emphasized in your chart, Florent

Pagny. They indicate important potential for communication, adaptability and flexibility. These houses are symbolically linked to the mind and intellect. The relative weakness implied by these characteristics indicates your tendency to hesitate or to be indecisive, but also your remarkable ability to start off again, which is a nice quality, finally: you can easily get yourself out of a tight spot thanks to your mobility and casualness, in the best sense of the term. This group of houses corresponds to evolutionary characteristics of your personality. However, they are only indications and you must include them in the rest of your chart in order to see whether they are validated or not!

Your Esoteric Decanates

Each sign contains 30 degrees and can be divided into three equal parts: the decanates. The Tradition indicates that specific meanings can be associated to each of the three decanates. Their sphere of activity is usually limited to the Sun sign, however, it is even more interesting to observe the distribution of all the planets in the chart to get an idea of the respective importance of the three decanates, which can complement the description of the personality.

These meanings must be considered with the greatest caution. Indeed, they are minor characteristics that can only underline other outstanding traits of character.

Traditionally, the first decanate highlights the characteristics of the sign where a planet is located. The two other decanates correspond to sub-dominant planets, depending on the nature of each sign. This system leads to a multiplication of meanings and it is impossible to have a clear understanding: here, we prefer to give only the meaning of one decanate in comparison with the other two, within the birth chart as a whole. Again, the greatest caution is needed with regard to this minor indication as it is not always reliable: it is not essential that you read these texts in the beginning. You can get back to them later on, once you have read more important interpretations

Your Esoteric Decanates



The third decanate, which means the part between 20° and 30° of any zodiacal sign, prevails in your natal chart, Florent Pagny. It contains the degrees of spirituality, traditionally more delicate to deal with, since they incline towards evolution and therefore, destabilizations. Individuals with an emphasised third decanate may have deeper sensitivity than most people, which often brings ordeals but also spiritual rewards.

Annex 2: Karmic Study

The karmic theme is a good complement to the psychological portrait, or natal chart. This analysis is based on the positions of the Lunar Nodes, the Black Moon and the Part of Fortune: they are also called fictitious points and describe the spiritual purpose of your destiny. Because there is in all of us an experience and a quest, our life is an evolutionary journey... provided that we head towards the right direction, of course! Indian astrologers highly prize the Nodes axis (North Node and South Node). It is the Ariadne's thread that we are invited to follow. The Black Moon indicates the sector where we are most likely to transform or to transcend, whereas the Part of Fortune points out the area where we can easily express our specificity.

The Lunar Nodes: a spiritual path

Lunar Nodes have their roots in the Indian tradition and they are based on a simple concept: each of us have a mission of their own, here on earth, a destiny, a course. According to the Indian philosophy, life is a school: the nodal axis describes our past experiences (South Node, our karma, our spiritual inheritance or our previous lives), and our aims on earth (North Node, our Dharma, the purpose of our current incarnation). This is the reason why the study of the lunar nodes is called "Karmic astrology". Here, we shall not step into hypothetical past lives. Wherever our current trends may come from, all that really matters is that we become aware of the purpose of our life, its finality and our dharma. We are likely to understand our life purpose around the age of 37, when the Lunar Nodes return to their natal position.

You make friends easily and you earn your entourage's confidence and esteem. Very early, you develop an acute sense of fraternal relations, generously receiving and giving. This spirit of mutual aid may lead to a happy-go-lucky attitude that may border on carelessness... As you rely too heavily on friendship, there may be a danger to undergo a few setbacks: idealism and spontaneous dedication may meet with ungrateful reactions or the indifference of the very persons whom you try to help. Your destiny is probably marked with a quest of individual achievement. It is of utmost importance that you create, that you beget a fruit, a work or a child. Little by little, you become independent, without selfishness, but with the strength of those who know that they can only rely on themselves. Do not hesitate to live your dreams to the end and to engender, over and over again. Creation, whatever its form, is the path to your fulfilment. You slowly discover the pleasure to design as you please, without outside interference. It is important that you find an area for your personal expression and, as the poet says, "before the eyes, constantly, night and day, either a great labour or a great love".

Your life's purpose is related to your disregard for material goods and dispossession. Whether or not you enjoy comfort, a financial or affective capital, someday, you question your assets and you start anew. Of course, you enjoy life's simple joys. The security granted by stable relationships allows you to cope with possible delusions. But life undertakes to remind you that nothing is eternal here below, the wheel keeps on turning and, at any time, one may irrevocably lose what one thought to possess forever. Paradoxically, ordeals and losses make you stronger: as time goes by, you feel freer, more detached from the values of this world and closer to the essential... The spiritual life can't be bothered with the prosperity sought after by ordinary mortals. As you give up the values that you once thought to be indispensable, you gain in terms of lucidity and, eventually, in terms of tranquillity. Your powers and your inner dimension will then impress many people: do not overdo it!

Lilith or the Dark Moon

The Black Moon is the spark of refusal and distance that is dormant in all of us. Depending on the sign where she is found in your chart, she highlights the desire to transform and to sublimate a part of your life. The Black Moon is unfathomable and mysterious. She gives a different dimension to the sector she touches. Her manifestations are subtle; nonetheless, she is powerful, implacable, demanding to the extreme... The Black Moon is also called Lilith. She is the inner flame of your heroism and insubordination.

One of the main drives of your life is your rejection of mediocrity: the intention is commendable although it is two-edged. You attach so much importance to charisma that you may reject a person whom you deem – wrongly – unworthy of your esteem! If you avoid this trap, the requirements that you demand from yourself as well as from your close friends become an exceptional springboard for evolution.

This configuration predisposes to the quest of the absolute on two accounts: firstly, the very nature of the Black Moon, implacable and extremist, and secondly, she is in a sector of the Zodiac that is traditionally evolutionary but extremist. Here, you flirt with death, danger and challenge. Everything suggests transformation, abandonment and revival, passion and cruelty. There is no half-measure in your behaviour, only a terrifying and marvellous thirst for the absolute... That'll take some doing for the person who will experience it with required intensity!

The Part of Fortune in House

The Part of Fortune is a very ancient fictitious point that depends on the lunar phase at the time of birth. The astrological house tenanted is particularly strengthened. In your chart, the Part of Fortune is in the 11th house: anything that has a human nature catches your attention. Friends, ideals, great humanitarian causes... You have original ideas for the betterment of the world. You do not consider the Tradition – or Traditions – to be immutable and ossified. It is important that you work on a reform or an overhaul of existing institutions: although you do not turn into a revolutionary, you are sensitized to society or educational projects. With the help of your entourage, and because, better than anyone else, you can earn the consideration of your close friends, you will slowly transform your familiar surroundings... since you cannot change the world!

Conclusion

A few remarks are needed here in order to allow you to fully take advantage of your astrological portrait: firstly, do not forget that a birth chart is also a photograph of the sky at birth and a structure that not only contains the personality's characteristics, but also its potential evolution.

We all know that, in real life, people begin to know themselves when they are in their forties, or even later. Likewise, several traits of character in a portrait may seem surprising: in most cases, it means that such features are not yet developed.

Some personalities reveal themselves late in life, whereas others are more precocious. It must be remembered that psychological structures are in a state of continuous evolution because they are influenced by unfolding events and gradual maturity. We can never underline strongly enough the "mobile" nature of the personality, throughout a lifetime.

On the other hand, it is difficult to discriminate what is "already present" at this moment in your life when you are reading your chart's interpretation, from what will appear later in the logic of your evolution: you must sort out all the pieces of information provided and, in most cases, you will see that your astrological portrait is helpful for your endeavours to know yourself better.

Finally, several readings of an astrological portrait are usually necessary in order to absorb all its different meanings and to evaluate the relevance of each character trait.

In any case, better self-knowledge obviously contributes to faster personal blossoming, and it is undoubtedly one of astrology's major roles: contributing to know oneself better, in order to improve more rapidly, to deal with one's weaknesses and to avoid its drawbacks, and to take advantage of one's assets as efficiently as possible.
