



Dwayne Johnson's Astrological Portrait





Dwayne Johnson's Astrological Portrait



Introduction	2
Your Planets, Houses, Aspects, and Natal Chart	4
Preamble	6
Your Planetary Repartitions	7
Your Dominant Modes and Elements	8
Your Dominants: Planets, Signs and Houses	9
Your Style, Behaviour, and Peculiarities	14
Your Sensitivity	18
Your Affectivity	19
The Way You Take Action and Your Sexuality	20
Your Intellect and Your Communication Style	21
Your Goals, Motivations, Career, and Destiny	22
Your Assets and Your Part of Joviality	25
Your Serious Side	25
A Few Special Points	26
Your Isolated Planets	27
Annex 1: Your Minor Dominants	28
Annex 2: Karmic Study	32
Conclusion	35



Dwayne Johnson's Astrological Portrait

Introduction

To fully benefit from this portrait, we suggest that you read its introduction and its preamble carefully, and then that to take the time to soak up the interpretations of each chapter. Given the large number of texts, which mirrors the human being's complexity, you may need to go through the contents several times, so as to get a good grasp of their meaning and to know yourself better. This will reward your patience.

The purpose of this report is to describe your psychological portrait and to highlight the most fundamental features on the personal area. The report begins with the analysis of your planetary dominants and outlines your personality's general traits before going into further detail. Minor dominants are analysed at the end of Annex 1, for purposes of clarity. Your report then delineates the various facets of your personality:

In general, even when relationships are not involved, we express ourselves and we feel according to our character and our personal motivations: this is indicated by the Ascendant and the Sun sign which both give details on the way we function. They shed a tremendously important light which allows to figure out your personality. Here, we describe your Sun sign (your inner self), your Ascendant (your behaviour as seen by others), and the ruler of the Ascendant (interesting additional pieces of information about the style of your personality). These descriptions alone cover nearly a third or a half of your psychological signature, depending on your natal chart characteristics.

Then, we address your sensitivity, or in other words, the way you receive things and how you express your emotions ; it works as a constant filter for all your exchanges, even when it becomes a more secondary element in your amorous relationship, because at that moment, affectivity prevails. Sensitivity is the way you perceive things, it is your radar, your daily mood, and at the same time, it indicates how you react to your entourage, on a daily basis. It is what others immediately see of you. In the second paragraph, we explain in which areas of life your sensitivity and your emotions are strongest, therefore, where you are most vulnerable.

After this, it is your affectivity, the way you love and how you charm, that comes into play as soon as you fall in love: the first part indicates its basic structure or its main form. The second part describes the areas where it is best expressed and how you display it, according to your personality.

A third fundamental area deals with your mode of action and your sexuality: how you behave, how you manage to obtain what you want, what kind of desires you have. There are twelve possibilities, very

different from one another. The study discloses the specific one that applies to you. In the second paragraph, we explain in which life areas you may most efficiently take advantage of your capacity for action and for conquest.

Your ways of communicating and of thinking are obviously among the major elements that must be integrated into the delineation and the description of your personality. Indeed, they influence your general behaviour and may modify or enhance the image your project (for instance, extraversion may “compensate” a weak affectivity, but a huge number of cases are possible). An additional chapter indicates the favourite areas where you enjoy communicating, thinking and meeting with people.

Besides, we analyze an even more personal aspect that is important to define and understand what may occur within your couple: each of us have a centre of interest, a privileged manner to be fulfilled or to achieve our destiny; this main motivation is indicated by the positions of your Sun and your chart ruler in the astrological houses and we provide you with its detailed description.

A natal chart contains the potential for specific fulfilment and a whole range of assets, protections and qualities. How does the lucky factor manifest in your personality? In which area can you best exploit your qualities? The answers are precisely revealed to you in this chapter.

On the other hand, we all feel in us a part of vulnerability, doubts and fears. How does this part of solemnity or serious side play out? How is it possible to handle it in order to evolve and to get rid of useless elements? All this information is provided to you in these two paragraphs.

Then, you can discover three additional traits of your personality that must be considered as secondary ones. They deal with your predispositions, which means that they need to be triggered by external events because they are not influenced by your will; let's call it a part of fate. Please, bear in mind that your destiny can unfold only in accordance with what you are: therefore, even if they belong to your more unconscious self, these characteristics are parts of you, definitely.

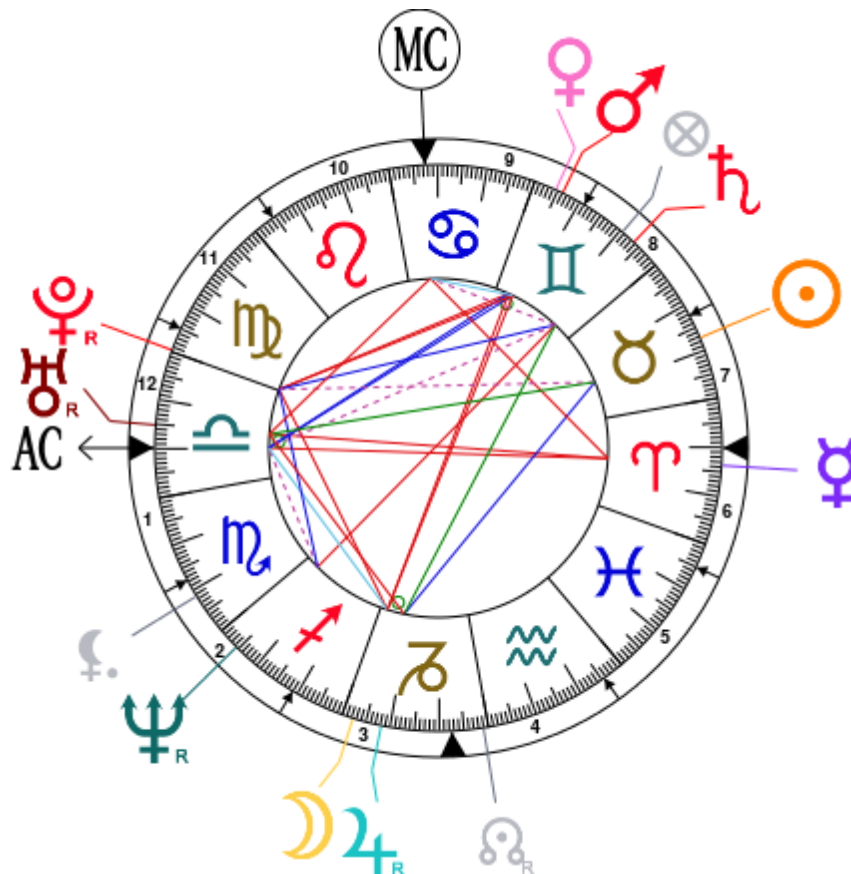
The karmic chart complements the psychological portrait or natal chart. It is based on the positions of the Lunar Nodes, the Black Moon, and the Part of Fortune. These elements of the chart, sometimes referred to as fictitious points, provide information about the spiritual meaning of your destiny. Owing to the fact that we all have in us acquired knowledge and the urge to go on a quest, our life is an evolutionary journey... However, these texts must be read with great caution: this is the reason why you will find this analysis in the Annex 2 of your report.

Your Planets, Houses, Aspects, and Natal Chart

Dwayne Johnson, born May 2, 1972, at 06:02 PM, San Leandro (Alameda), California [122.09W ; 37.43N ; 7W00]

Natal Planets			In House	Natal Houses (Placidus)	
☉ Sun	12°42'	♉ Taurus	House 7	House 1	19°51' ♎ Libra
☾ Moon	2°19'	♄ Capricorn	House 3	House 2	17°40' ♏ Scorpio
☿ Mercury	16°18'	♈ Aries	House 6	House 3	18°57' ♐ Sagittarius
♀ Venus	25°25'	♊ Gemini	House 9	House 4	22°34' ♄ Capricorn
♂ Mars	23°54'	♊ Gemini	House 9	House 5	25°33' ♒ Aquarius
♃ Jupiter	8°13' R	♄ Capricorn	House 3	House 6	25°00' ♛ Pisces
♄ Saturn	6°21'	♊ Gemini	House 8	House 7	19°51' ♈ Aries
♅ Uranus	15°11' R	♎ Libra	House 12	House 8	17°40' ♉ Taurus
♆ Neptune	4°28' R	♐ Sagittarius	House 2	House 9	18°57' ♊ Gemini
♇ Pluto	29°40' R	♍ Virgo	House 12	House 10	22°34' ♋ Cancer
♁ Node	28°59' R	♄ Capricorn	House 4	House 11	25°33' ♌ Leo
♇ Lilith	21°23'	♏ Scorpio	House 2	House 12	25°00' ♍ Virgo
AS AS	19°51'	♎ Libra			
MC MC	22°34'	♋ Cancer			

In keeping with the common practice, we consider that a planet posited within 1 degree of the next house belongs to that house. We allow an orb of 2 degrees for the ASC and the MC.



List of Your Active Planetary Aspects

Please find below the list of all the active inter-aspects which are interpreted in this report, in addition to your planets in sign, in house, and all your planetary dominants. Since the aspects between slow-moving planets are of a collective nature, they are not displayed, in compliance with our interpretation rules.

- ★★★★★ Sun trine Jupiter, orb 4° 28'
- ★★★★★ Sun inconjunction Uranus, orb 2° 29'
- ★★★★★ Sun sesqui-quadrate Pluto, orb 1° 58'
- ★★★★★ Moon opposite Venus, orb -6° 54'
- ★★★★★ Moon opposite Mars, orb -8° 24'
- ★★★★★ Moon conjunction Jupiter, orb 5° 54'
- ★★★★★ Moon square Pluto, orb 2° 38'
- ★★★★★ Moon quintile Ascendant, orb 0° 27'
- ★★★★★ Mercury opposite Uranus, orb -1° 07'
- ★★★★★ Mercury opposite Ascendant, orb -3° 32'
- ★★★★★ Mercury square Midheaven, orb 6° 16'
- ★★★★★ Venus conjunction Mars, orb 1° 3'
- ★★★★★ Venus square Pluto, orb 4° 15'
- ★★★★★ Venus trine Ascendant, orb -5° 33'
- ★★★★★ Mars square Pluto, orb 5° 46'
- ★★★★★ Mars trine Ascendant, orb -4° 02'
- ★★★★★ Mars semi-sextile Midheaven, orb -1° 19'
- ★★★★★ Jupiter inconjunction Saturn, orb -1° 52'
- ★★★★★ Saturn sesqui-quadrate Ascendant, orb -1° 29'
- ★★★★★ Saturn semi-square Midheaven, orb 1° 13'
- ★★★★★ Uranus conjunction Ascendant, orb 4° 39'
- ★★★★★ Uranus square Midheaven, orb -7° 23'
- ★★★★★ Neptune semi-square Ascendant, orb -0° 23'

Meaning of Stars

Stars indicate the strength of the aspects. Two solid coloured stars (there are half-stars also), mean that the aspect is powerful enough to be noticed at the first reading.

We strongly advise that you read the paragraphs displaying less than two stars later on, after you have absorbed the full import of the other texts.

The yellow colour indicates a soothing and conciliating aspect, and the red colour, a dynamic and tense aspect. The red aspects enable you to evolve, to take action, and to learn to turn your "weaknesses" into assets through your life experiences. The yellow aspects are innate strengths on which you rely in order to grow better with the former...

Preamble

When interpreting a natal chart, the best method is to start gradually from general features to specific ones. Thus, there is usually a plan to be followed, from the overall analysis of the chart and its structure, to the description of its different character traits.

In the first part, an overall analysis of the chart enables us to figure out the personality's main features and to emphasize several points that are confirmed or not in the detailed analysis: in any case, those general traits are taken into account. Human personality is an infinitely intricate entity and describing it is a complex task. Claiming to rapidly summarize it is illusory, although it does not mean that it is an impossible challenge. It is essential to read a natal chart several times in order to absorb all its different meanings and to grasp all this complexity. But the exercise is worthwhile.

In brief, a natal chart is composed of ten planets: two luminaries, the Sun and the Moon, three fast-moving or individual planets, Mercury, Venus and Mars, two slow-moving planets, Jupiter and Saturn, and three very slow-moving planets, Uranus, Neptune and Pluto. Additional secondary elements are: the Lunar Nodes, the Dark Moon or Lilith, Chiron and other minor objects. They are all posited on the Zodiac wheel consisting of twelve signs, from Aries to Pisces, and divided into twelve astrological houses.

The first step is to evaluate the importance of each planet. This is what we call identifying the dominant planets. This process obeys rules that depend on the astrologer's sensitivity and experience but it also has precise and steady bases: thus, we can take into account the parameters of a planet's activity (the number of active aspects a planet forms, the importance of each aspect according to its nature and its exactness), angularity parameters; (proximity to the four angles, Ascendant, Midheaven, Descendant and Imum Coeli or Nadir, all of them being evaluated numerically, according to the kind of angle and the planet-angle distance) and quality parameters (rulership, exaltation, exile and fall). Finally, other criteria such as the rulership of the Ascendant and the Midheaven etc. are important.

These different criteria allow a planet to be highlighted and lead to useful conclusions when interpreting the chart.

The overall chart analysis begins with the observation of three sorts of planetary distributions in the chart: Eastern or Western hemisphere, Northern or Southern hemisphere, and quadrants (North-eastern, North-western, South-eastern and South-western). These three distributions give a general tone in terms of introversion and extraversion, willpower, sociability, and behavioural predispositions.

Then, there are three additional distributions: elements (called triplicity since there are three groups of signs for each one) - Fire, Air, Earth and Water - corresponding to a character typology, modality (or quadruplicity with four groups of signs for each one) - Cardinal, Fixed and Mutable - and polarity (Yin and Yang).

There are three types of dominants: dominant planets, dominant signs and dominant houses. The novice thinks astrology means only "to be Aries" or sometimes, for example, "to be Aries Ascendant Virgo". It is actually far more complex. Although the Sun and the Ascendant alone may reveal a large part of the character - approximately a third or a half of your psychological signature, a person is neither "just the Sun" (called the sign) nor just "the first house" (the Ascendant). Thus, a particular planet's influence

may be significantly increased; a particular sign or house may contain a group of planets that will bring nuances and sometimes weaken the role of the Ascendant, of the Sun sign etc.

Lastly, there are two other criteria: accentuations (angular, succedent and cadent) which are a classification of astrological houses and types of decanates that are occupied (each sign is divided into three decanates of ten degrees each). They provide some additional informations.

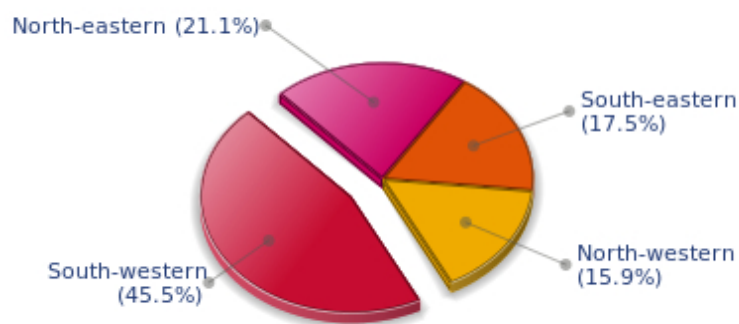
These general character traits must not be taken literally; they are, somehow, preparing for the chart reading. They allow to understand the second part of the analysis, which is more detailed and precise. It focuses on every area of the personality and provides a synthesis of all the above-mentioned parameters according to sound hierarchical rules.

As explained in the introduction of your Psychological Portrait report, minor dominants are analysed at the end of Annex 1, for purposes of clarity.

Your Planetary Repartitions

Each quadrant is a combination of the four hemispheres of your birth chart and relates to a character typology. The Southern hemisphere – the top of your chart, around the Midheaven – is associated with extraversion, action, and public life, whereas the Northern hemisphere prompts to introversion, reflexion, and private life. The Eastern hemisphere – the left part, around the Ascendant – is linked to your ego and your willpower, whereas the Western hemisphere indicates how other people influence you, and how flexible you are when you make a decision.

Your Four Quadrants

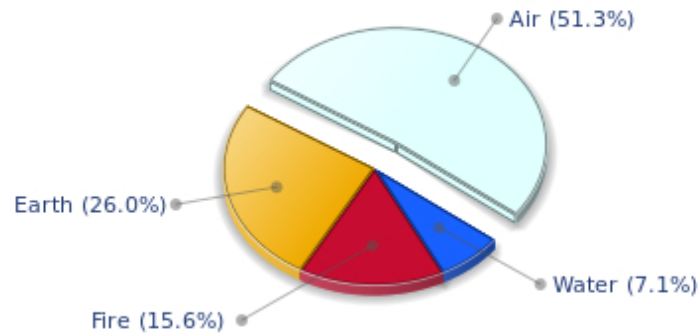


Dwayne Johnson, the diurnal South-western quadrant, consisting of the 7th, 8th and 9th houses, prevails in your chart: this sector brings about a thirst for communication and sometimes a need to take risks in your dealings with others. Relations are a factor of your evolution and your transformation, which you accept serenely. Indeed, what matters to you is the movement and the energy that link you to others and that make you gain more awareness. A kind of rebellion or a desire to get away from it all is rooted in you.

Your Dominant Modes and Elements

Dwayne Johnson, here are the graphs of your Elements and Modes, based on planets' position and angles in the twelve signs:

Your Four Elements



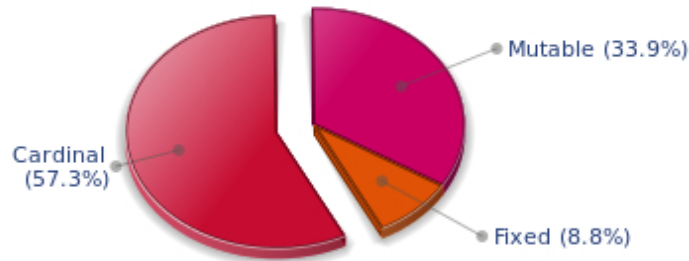
Cheers for communication and mobility, Dwayne Johnson! The predominance of Air signs in your chart favours and amplifies your taste for relations and for all kinds of short trips, whether real (travels) or symbolic (new ideas, mind speculations). You gain in flexibility and adaptability what you lose in self-assertion or in pragmatism.

Like the majority of Earth signs, Dwayne Johnson, you are efficient, concrete and not too emotional. What matters to you is what you see: you judge the tree by its fruits. Your ideas keep changing, words disappear, but actions and their consequences are visible and remain. Express your sensitivity, even if it means revealing your vulnerability. Emotions, energy and communication must not be neglected; concrete action is meaningless if it is not justified by your heart, your intellect or your enthusiasm.

Your natal chart shows a lack of the Water element, with only 7.07% instead of the average 25%. Whether you are aware of it or not, affective values bring about problems, for you or your close friends. In general, a lack of Water does not necessarily mean that you are unable to love as much as others do. However, you may find it difficult to express the deepness of your heart and of your feelings. In the best cases, you come to terms with it, you adjust, you manage to show more affection or, why not, you pretend to be really affected! In the worst cases, you get into the terrible habit of repressing these essential values and you tend to forget that they are the basis of the richest and strongest bonds between human beings.

The twelve zodiacal signs are split up into three groups or modes, called quadruplicities, a learned word meaning only that these three groups include four signs. The Cardinal, Fixed and Mutable modes are more or less represented in your natal chart, depending on planets' positions and importance, and on angles in the twelve signs.

Your Modes



Dwayne Johnson, the Cardinal mode is dominant here and indicates a predisposition to action, and more exactly, to impulsion and to undertake: you are very keen to implement the plans you have in mind, to get things going and to create them. This is the most important aspect that inspires enthusiasm and adrenalin in you, without which you can grow weary rapidly. You are individualistic (maybe too much?) and assertive. You let others strengthen and improve the constructions which you built with fervour.

Your Dominants: Planets, Signs and Houses

The issue of dominant planets has existed since the mists of time in astrology: how nice it would be if a person could be described with a few words and one or several planets that would represent their character, without having to analyse such elements as rulerships, angularities, houses, etc!

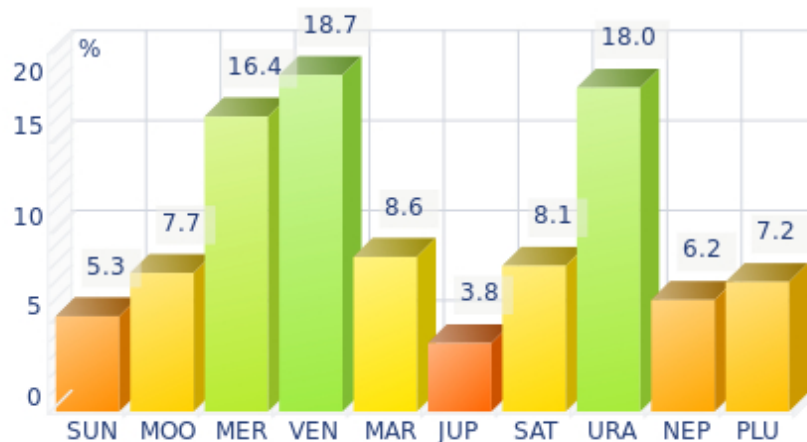
The ten planets - the Sun throughout Pluto - are a bit like ten characters in a role-play, each one has its own personality, its own way of acting, its own strengths and weaknesses. They actually represent a classification into ten distinct personalities, and astrologers have always tried to associate one or several dominant planets to a natal chart as well as dominant signs and houses.

Indeed, it is quite the same situation with signs and houses. If planets symbolize characters, signs represent hues - the mental, emotional and physical structures of an individual. The sign in which a planet is posited is like a character whose features are modified according to the place where he lives. In a chart, there are usually one, two or three highlighted signs that allow to rapidly describe its owner.

Regarding astrological houses, the principle is even simpler: the twelve houses correspond to twelve fields of life, and planets tenanted any given house increase that house's importance and highlight all relevant life departments: it may be marriage, work, friendship etc.

Dwayne Johnson, here is the evaluation diagramme for your planets:

Your Dominant Planets



The three planets that are most highlighted in your chart are Venus, Uranus and Mercury.

With Venus among your dominant planets, one of your first reflexes is... to please! Your look, your charm, and your seduction are omnipresent elements in your behaviour.

Your approach to things is connected to your heart, and for you, no real communication can flow if your interlocutors exude no sympathy or warmth. Cold and logical reasoning, clear thoughts and good sense are not important to you: if there is no affective bond with your environment, no connection can be established with the Venusian that you are, and nothing happens.

You have a strong artistic side, and you never neglect subjective but clear concepts such as pleasure, beauty, and also sensuality. However, sometimes to the detriment of efficiency, durability, logic, and... detachment.

Uranus is among your dominant planets: just like Neptune and Pluto, Uranian typology is less clearly defined than the so-called classical seven planets that are visible to the naked eye, from the Sun to Saturn. However, it is possible to associate your Uranian nature with a few clear characteristics: Uranus rhymes with independence, freedom, originality, or even rebelliousness and marginality, when things go wrong...

Uranus is Mercury's higher octave and as such, he borrows some of its traits of character; namely, a tendency to intellectualize situations and emotions with affective detachment, or at least jagged affectivity.

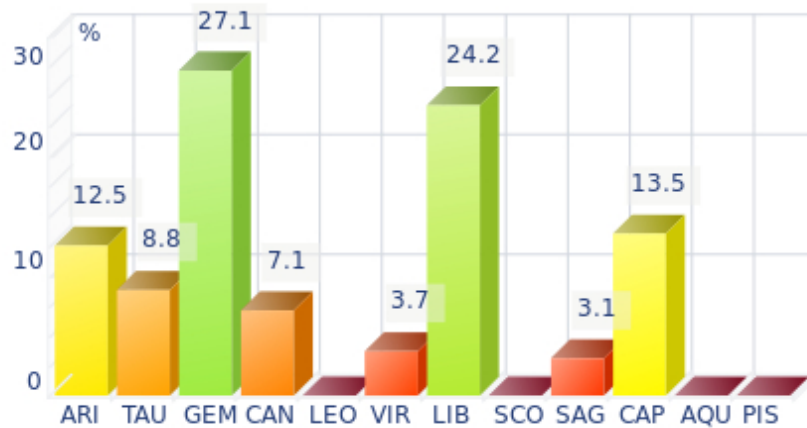
Therefore, you are certainly a passionate man who is on the lookout for any kind of action or revolutionary idea, and you are keen on new things. Uranians are never predictable, and it is especially when they are believed to be stable and well settled that... they change everything - their life, partner, and job! In fact, you are allergic to any kind of routine, although avoiding it must give way to many risks.

With Mercury among your dominant planets, you are certainly cerebral, nervous, swift, curious, quick-witted, and you love to communicate. Your psychological pattern is intellectual, all the more so since Mercury is important, with its whole set of assets but also of weaknesses, obviously.

Your sensitivity, emotions, and heart's impulses give precedence to thinking, which can lead people to believe that you are a playful and witty but heartless person, intellectualizing situations and juggling with words and numbers whilst ignoring human aspects of things. Of course, it is said that cats always land on their feet - this is your Mercurian strength and your trump card!

Your weakness lies in your nervousness, and you may miss your goal because of your "over-intellectualization" that may be detrimental to other kind of energies such as instinct, spontaneity, heart, sensitivity, etc.

Your Dominant Signs



In your natal chart, the three most important signs, delineated according to the above-mentioned criteria, are, in decreasing order of strength, Gemini, Libra and Capricorn. They are often prominent because your Ascendant and your Sun are posited there. However, it is not always the case: it may be because they are occupied by a cluster of planets, by a planet near an angle other than the Midheaven and the Ascendant, or because two or three planets are very active and form numerous aspects from these signs. Therefore, you partly take on the three signs' characteristics, which are somehow superimposed on your natal chart, and all the more so if any of the signs in question is highlighted.

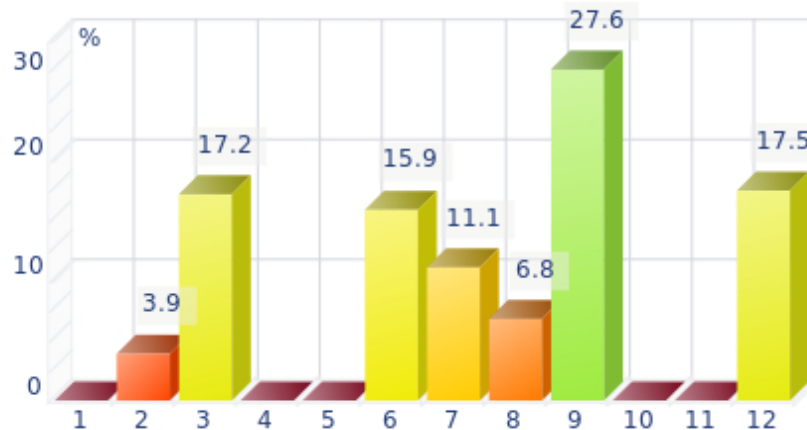
With Gemini as a dominant sign, your qualities include being lively, curious, mobile, clever, and flexible: you often make others dizzy, and you may come across as a dilettante - a bit inquisitive, shallow, and insensitive because you may be too intellectualizing. However, your natural curiosity, a nice quality, and your quick humour, allow you to demonstrate to everyone how much they may gain from your company, and that your apparent flightiness hides an appetite (particularly mental) for life, which itself conceals a terrific charm!

With Libra as a dominant sign in your natal chart, you love to please, to charm, and to be likeable. Moreover, you are naturally inclined towards tolerance and moderation, as well as elegance and tact, as if you were meant to please! Of course, you always find malcontents who criticize your lack of authenticity or of courage and your half-heartedness, but your aim is to be liked, and in this field, you are an unrivalled champion!

Capricorn is one of your dominant signs and endows you with a grave and serious style that seems to stick to you constantly. But if you have that reserved and cold side - as some extrovert people may think - on the other hand, you possess sturdy qualities: you are strong-willed and tough. Your long-term vision,

your sense of duty, and your ambition are not affected by the derisory and erratic motions that seem to upset most mortals less steady than you. Besides, you are like a good wine, you age well and your natural solemnity or serious side paradoxically turns into an almost cheerful appearance, as you grow older. You are actually very sensitive when it comes to love. Faithful, caring, sweet, and sensitive, your behaviour is very different in your everyday, sentimental life. A golden heart beats under your tough and austere appearance...

Your Dominant Houses



Houses 9, 12 and 3 are the most tenanted ones in your natal chart. To compute their strength, planets and angles are weighed according to various astrological criteria such as swiftness, activity, angularity, rulership etc. From the analysis of the most tenanted Houses, the Astrologer deduces the fields of activity that are most relevant to you, be it because of what you are experiencing, or what you may experience in the future, or because of your deep inner motivations.

Your 9th house being one of your most tenanted house, or at least emphasized, travels and faraway places play a major role for you: travels may take place in a symbolic sense, namely mind speculations or conceptions about political matters, philosophy, religion or spirituality, or in the literal sense, such as real long distance travels by plane. It may also be that you spend a part of your life far from home, etc. You are driven by some kind of rebelliousness, which urges you to explore the Unknown; it may also be the call of the adventure. Besides, if the rest of your chart concurs, you may be considered as a real draught, often up hill and down dale, constantly on the lookout for exciting discoveries and new, enchanting horizons.

The 12th house is emphasized in your chart: like the 8th house, it has a rich and complex meaning. Although its bad reputation is likely to scare most readers in the first place - it is indeed the house of hidden or isolated places, of solitude, of ordeals or enemies - it can also mean that a part of your life is very deep and intense. If your achievements are not visible in the public eye, you may fulfil yourself in a different but equally important way: you may be involved in secret activities, humanitarian causes, and projects in favour of disadvantaged people. You are likely to work in quiet and remote places. In many cases, you will gain from these hidden activities as many treasures as people who have a more public destiny. It may be because you sublimate your work, or only because you successfully carry out your task within your environment. There is no such things as a good or a bad house, because each area of life is necessary in its own way, and we need all of them, if we are to improve spiritually.

As the 3rd house is one of the most important houses in your chart, communication plays a major role in your life or in your deep motivations: frequent short trips, open-mindedness - which may offset a lack of mutable signs for instance - listening, discussion, interest in learning, knowledge accumulation or long-term studies, etc., are all areas that greatly appeal to you and are part of your daily life.

Your Style, Behaviour, and Peculiarities

What is commonly known as "sign" indicates the position of the Sun in the Zodiac. The Sun highlights all the characteristics of the sign he tenants. According to astrology traditional rules, these characteristics are all the more pure and exact when the Sun is strong in the sign, or when the sign is particularly highlighted within the chart. Here, we indicate the pure characteristics of the sign but you must bear in mind that they may only shed a light on a particular aspect of your personality. Indeed, the sole sign of the Sun, or of the Ascendant, can never describe an astrological chart because it depends on the degree of strength of the said sign in your chart.

Another important point must be underlined. Contrary to the Ascendant, which clearly describes your appearance, your vitality, your physical constitution, your spontaneous behaviour and the image you project, your Sun sign describes your inner self, which you may not completely be aware of, and which may emerge gradually as you mature: it is about your inner personality that you reveal only to the members of your entourage whom you trust. The Sun sign is likely to be the final form of your personality, once it has evolved in line with the energies of the other parts of your chart, the beginning of which is seen in the Ascendant, your external "bark".

The Ascendant is one of the major components of your natal chart. It is the zodiacal sign that rises in the East at the very moment of your birth. To calculate it, it is therefore necessary to know your exact time of birth.

It provides with a wealth of information on your personality. It is one of the key features that allows the analysis of several parts of you, such as your appearance, your character as it is initially perceived and your immediate behaviour. It describes the external aspect of your personality which you always display, but it also describes your physical constitution in the long-term, in other words, your health.

Please be aware that, in spite of the importance of the Ascendant, the accuracy of its description depends on how strongly highlighted it is in your natal chart. We use the entire set of astrological rules to assess the strength of the Ascendant. In most cases, the Ascendant is as revealing as your "sign", i.e., the sign where the Sun is posited at the time of birth.

You were born under the sign of Taurus and your Ascendant is in Libra

Before broaching the details of the meaning of your Sun and your Ascendant, as a preamble, we offer a brief generic interpretation of their combination in your chart:

This sign combination evokes the alliance between the gourmet and the aesthete! These two Venusian signs turn you into a perfect epicure! With your Libra Ascendant, you come across as a friendly, sociable, and consensual person. Indeed, Libra is the most skilled sign when it is about appearing in the most sociable and nicest light. When people meet you for the first time, they are deeply charmed by your amazing refinement and your taste for aesthetics which is blended with a need for justice or perfect harmony. However, you are not as ethereal as you may appear to be, and as people scratch your veneer, they discover that your Taurus Sun, more truculent than Libra, cannot be burdened with superfluous nuances and gives more substance to your charm. Sometimes, people are surprised by your suddenly grumpy, but so endearing, mood. In all circumstances, you keep on appreciating the pleasures of life.

You were born with the Sun in Taurus

Peace, joy of life and sensuality are essential to you: You have a simple and quiet nature. You easily find happiness because you are not competitive. In addition, your relaxed attitude and your common sense always take you to places where you are happy, even though you are not the number one, even though you do not move in haste. The important thing for you is to construct, with patience and persistence. These two qualities yield strong, steadfast, and sustainable efforts that can withstand any pitfalls.

You are gentle, with a slow thinking process, but once you have opted for an orientation, nothing, no one, can make you change your mind. You loathe changes in general, and once you have taken the few major unavoidable decisions in the course of your life, you are on track!

As you are born under this sign, you are loyal, steadfast, strong, patient, enduring, persistent, attached, sensual, realistic, constructive, tenacious, with a strong need for security. But you may also be stubborn, rigid, possessive, materialistic, static and slow.

In love, Sir, more often than not, your passions are strong. It may take you some time to be moved, but once your choice is made, it is a lasting one and you are particularly endearing and loyal. You are not interested in infidelity or in having numerous partners.

Your love emerges slowly but it grows in depth, like a root which solidifies with time. You are not too romantic because you are so practical and conventional... but your style and your sexiness compensate for your lack of idealism. You tend to associate the concept of marriage with that of lifestyle or of the benefits that come with it.

Your physical urges are pressing; you are sensual and pleasure takes an important place in your life. You appreciate partners who cook like a cordon-bleu and who may cause a few gastronomic excesses, but you readily accept them.

Your Ascendant is in Libra

Psychologically speaking, your nature is sanguine and communicative or nervous and introverted, depending on who prevails, either Venus, the principle of harmony, extraversion, desire to seduce, easy and airy communication, or Saturn, the principle of rigour, introversion, self-control, concentration and meditation. Unless Saturn is very strong in the rest of the chart, Libra is very delicate and charming. She easily adjusts in society, particularly with her perpetual search of compromise. It is the reason why you may seem to be hesitant and weak. You do not dare to insist or to assert your views: you prefer to intervene as an agent for harmony, of rally and equity, even to the detriment of your self-assertion. You loathe violence and you strive with all your heart to pacify, to smooth things over, and to adjust to the situation with flexibility and grace.

Since you are born under this sign, you are sentimental, charming, courteous, delicate, refined, loyal, pacifist, fair, distinguished, light, romantic, cultured, airy, likeable, spruce, perfectionist, caring, gentle, quiet, tidy, social, artist, with strong aesthetic tastes, tolerant, lenient, sociable, seductive, elegant, kind, respectful, balanced, but you may also be hesitant, weak, wavering, selfish, fragile, indecisive, timid, indolent, cold or even insensitive.

In love, Sir, you cannot help but try to seduce wherever you go, and you succeed fairly well. You are a

real heartbreaker and your natural gift borders on impertinence and injustice, from the outsider's point of view!

You are so likeable, easy to deal with, caring, smiling, diplomatic, you establish connections with such great ease, that you attract a majority of women, including those you are not interested in. It is not a game, it is your nature. Each and everyone believe to be the object and the target of your favours whereas, in fact, it is the way you behave with everybody.

You cannot stand solitude at all: you prefer to be ill-accompanied rather than to be alone. There is a danger that you remain attached to a person who does not suit you best. You are spoiled for choice. You should be able to find a suitable match and to reach the state of harmony that is the centre of your deep motivations.

You are a perfectionist, like Leos who are so demanding regarding the quality of their partners. Real life is seldom as beautiful as your ideal and you may be deceived and badly wounded if your couple should break down. But you will pursue the quest of your soul mate with all the natural qualities that are almost entirely dedicated to this search.

The ruler of your chart is in Gemini

The ruler of the Ascendant, also referred to as the chart ruler, brings a few interesting nuances to the meanings provided by the Sun and the Ascendant. The sign in which the ruler of the Ascendant is posited fine-tunes the style of personality described by the Sun and the Ascendant. It may strengthen it if the sign is identical to either of them.

The ruler of the Ascendant, Dwayne Johnson, is Venus. In the sign of Gemini, it endows you with flexibility and the capacity to undertake several things simultaneously, sometimes at the risk of spreading yourself too thin and getting discouraged. Your innate communication skills match your insatiable curiosity for people and for things.

Aspects to your Ascendant

Several planets form an aspect with your Ascendant, Dwayne Johnson. Therefore, in their specific way, they modify your behaviour and your personality, which do not take on the pure characteristics of your Libra Ascendant only, but which are a blend of its characteristics with those of the said aspects.

★★★★☆ Mercury opposite Ascendant, orb -3° 32'

With Mercury in opposition to your Ascendant, your sense of communication is usually expressed cleverly, Dwayne Johnson. Indeed, any opposition to the Ascendant is at the same time a conjunction with the Descendant which symbolises "the other people", relationships, contracts, and associations. Therefore, your tendency is to use your intellect and your interpersonal skills in order to be understood by other people, more than to be your "natural" and true self. It is as if you have chosen your camp: in your daily behaviour, you seem to prefer to adjust to people rather than to express personal views.

★★★★☆ Uranus conjunction Ascendant, orb 4° 39'

Uranus is in conjunction with your Ascendant, Dwayne Johnson. Therefore, your behaviour has a good dose of originality. Somehow, it is through your external appearance that you tell other people... that you are different. You do not like to merge into the crowd. Uranus forces you to set yourself apart from

people and to distance yourself from the multitude. The other peculiarity of the configuration is that your behaviour is at the same time very individualistic and marked by your love for freedom, Dwayne Johnson. When you face constraints, you just remove them. For this reason, you may be taken for a rebel or a person who fears neither God nor man, although it is completely wrong, of course. The sheer truth is that freedom of thought and action is your sacred value.

★★★★★ Mars trine Ascendant, orb -4° 02'

Your vitality and your taste for action are obvious, Dwayne Johnson. Thanks to Mars, your behaviour is often perceived as energetic, or at least, as action-oriented and enterprising. Your dynamism is one of your constant assets.

★★★★★ Venus trine Ascendant, orb -5° 33'

Thanks to Venus, Dwayne Johnson, your behaviour is in harmony with your affective life, and you need not make any special effort in order to express your feelings in a natural way and without arousing people's criticisms. This asset enhances your natural easiness and charm, which is definitely not unpleasant!

★★★★★ Neptune semi-square Ascendant, orb -0° 23'

Neptune is in dissonance with your Ascendant, Dwayne Johnson. You may have difficulties in controlling your emotions, and you tend to hesitate about the behaviour to adopt in society. In some circumstances, you distrust everyone, yourself and other people, without knowing the reason why. Keep your feet on the ground and do not allow your imagination to carry you too far away from sheer reality! No one nurtures bad intentions towards you. This is something you must realise if you do not want to get worked up about... nothing.

★★★★★ Moon quintile Ascendant, orb 0° 27'

Your instinct seldom misleads you, as far as your external appearance is concerned, thanks to the Moon's soft aspect with your Ascendant, Dwayne Johnson. You keep your emotions under rather good control, in instinctive and smooth ways.

★★★★★ Saturn sesqui-quadrate Ascendant, orb -1° 29'

This hard aspect between Saturn and your Ascendant may bring about a lack of self-confidence and some inhibitions in your behaviour, in people's eyes, Dwayne Johnson. Therefore, you must have trust in yourself and you must not be taken away into the spiral of doubts with its usual consequences, which are to hide away, or on the contrary and as a compensation, to overdo. Please, keep in mind that all this is highly subjective, and that in most cases, if you fully understand it, you can gradually overcome this slight restraint, and even turn it into strength. This is how you can keep your self-esteem and transform your prudence into... an asset.

Your Sensitivity

Your sensitivity is withdrawn, Dwayne Johnson: more than anyone, you tend to lock yourself in your ivory tower, as you are aware of a kind of superiority that may be real, though overrated. Your moods are not perceptible because you control them with a tight fist. It is difficult to know if you are happy or upset because you show nothing. You avoid situations which compel you to reveal your emotions because you are not demonstrative. Please, be aware that it is not your amorous behaviour that is being analyzed, but the daily expression of your sensitivity. You dread the crowd and you need calm, and even solitude, to feel comfortable. You are well-equipped to remain balanced in all circumstances, but it may prove beneficial if you progressively take a relaxed attitude and show more dedication, as you are worth it; it is easier for you to exteriorize your feelings when your projects or your ambitions justify that you do so. You do not practice gratuitous outpourings, particularly when you are with a group, because you are afraid to open up, as if you were on the defensive, without any reason most of the times.

Lively, even restless sometimes, Dwayne Johnson, your thoughts are roaming, prolific, fluctuating: you are interested in many things and your “Jack of all trades” side is part of your charm, even if you have difficulties in concentrating and completing what you start.

Your emotions are particularly active during your contacts and your frequent travels. You almost chat too much sometimes, mixing practical and affective matters, often changing your mind. However, you are very intuitive when it comes to instantly grasp the personality of the person you are dealing with. If you are a journalist or a writer, you probably have chosen the best direction for you! Relations with females are usually favoured, or at least, they are numerous and intense.

★★★☆☆ Moon square Pluto, orb 2° 38'

This planetary configuration causes distrust (Plutonian distance) towards individuals, groups, or your own family environment (lunar values). It may bring about a feeling of affective or relational wound. The feeling of security is absent, or fragmented or illusive. How is it possible to feel integrated whereas you know that you are different and on your own? It is the myth of the « ugly duckling », with its different specific characteristics, an alien to its origins and its roots. It is important that you accept your differences and that you have them accepted by others, without forsaking your essential values. This is how you can exercise your group ownership without allowing them to exclude you or to repress your secret determinations. When this aspect is well integrated, it is a factor of lucidity for your emotions. You perceive without gullibility what is really at stake in your intimate relationships and the flaws of your environment. The fact that you do not readily trust people spares you many traps and delusions.

★★★★☆ Moon conjunction Jupiter, orb 5° 54'

Why should one complicate one's life if it is possible to enjoy the simple joys of the present? This harmonic Moon-Jupiter aspect indicates a cheerful nature, which earns your entourage's liking and protects the balance of your intimate life. Your sociability is supported by your desire to smoothly adhere to a group, a social or family cell. You are fond of moments where you unwind and relax. You value your daily comfort and, to preserve it, you accept to play by the rules of privacy. When this aspect dictates your attitudes, you behave like a person easy to get along with... even though your personal demands, relegated to the backseat, come up again at top speed and force you to behave more in line with your inner needs.

★★★★★ Moon opposite Venus, orb -6° 54'

With this Moon-Venus aspect, passion and sensuality may often upset your well being and your tranquillity. Your way of loving is dual. You either accept life simple joys, or you live through intense emotions and consuming fevers. It is difficult for you to reconcile your daily life with your affective or sensual desire. Habits kill passion, whereas passion forbids the carelessness that is yet indispensable for your fulfilment. This aspect suggests the traditional mother/woman and father/lover antagonisms that are incompatible although it is possible to experience them alternately. It is important that you balance these antinomical desires: you may let the turmoil of your heart break the monotony of an amorous life devoid of excitement but it does not mean that you must forsake the reassuring values of a couple, or family cell, where you can rest at will and give free rein to your intimate behaviour. You may indulge yourself but don't forget that you must deserve love.

★★★★★ Moon opposite Mars, orb -8° 24'

The Moon-Mars dissonance suggests touchiness and sometimes, aggressiveness. You are irascible and very sensitive to all sorts of threats and dangers. You react very quickly, too hastily. To protect your well being, you must learn to control your mood, to coordinate your actions and to balance your opinions. You are often disturbed by plain facts: Either you seek refuge in your intimate realm and refuse to face the truth or, on the contrary, you are engaged in altercations, which forbid all tranquillity. It is important that you balance these two tendencies and that you alternate moments of action with phases of carelessness and relaxation. These two attitudes are relatively irreconcilable.

Your Affectivity

In your chart, the Sun is in Taurus and Venus, in Gemini. Two signs may follow each other and be quite different: Taurus' essential and fragile desire for balance opposes Gemini's will to discover, to experiment, to increase the variety of emotions and encounters (Venus). These two signs are definitely complementary. The Sun in Taurus facilitates the establishment of long-lasting affective adventures and therefore, it achieves fulfilment. Venus in Gemini hates to lock up the couple in a routine inevitably detrimental to the spontaneity and the plenitude of feelings. However, perfect balance can be achieved only when both tendencies are expressed – although they are antinomical in many regards. Selecting your partner, understanding and evolving abilities are decisive here. You must satisfy your solar sign's thirst for tranquillity and Venus' needs for novelty, alternately. You must meet the urges for intimacy, stability and the pressing necessity to fuel your passion, over and over again. As paradoxical as it may seem, you love only that very person who sometimes upsets Taurus' quietness and who challenges the serenity you dream of. Because passion is priceless. This is the price you have to pay for it.

What is it, that really appeals to you, Dwayne Johnson, to love or to please? You have so much charm and so much volubility that you easily manage to be what is known as a lady-killer. Feelings and intellect are so tightly mingled that you may not know any more whether you are really in love or whether you are acting. You have a taste for flirt and variety, and you appreciate very much complicated situations where no one knows where the truth lies any more. You shift from one game to another. To you, everything can be an agent for seduction, be it your attitudes, your words or the way you dress. You do not separate your actions from your desire to please. People who do not understand this are in trouble because, if they take your sweet and well-phrased speeches too literally, they are likely to undergo cruel disappointments: for you, it is only a matter of living in the moment and you never commit yourself because, above all, you loathe confinement, even just its thought.

Dwayne Johnson, the choice is yours: love encountered while travelling abroad, or just love for travels and focusing your feelings upon this ideal of evasion towards far-off lands? Or may be both. In any case, you often tend to fall in love, and even to get married, with a person of foreign origins. Exoticism and difference mysteriously appeal to you and there is little you can do against it. Early in life, you have a craving for space and for changes, particularly regarding your feelings: there is not a single chance that you are content with habits or that you refuse any new and exciting experience full of unusual and unknown features. You are always on the move and you feel so great when you finally find yourself in a ship at the other end of the world or somewhere in an airport, with all your senses stimulated, ready to be seduced by the unusual charm of the person whom you will meet and who will not resemble you. Your feelings are vast and generous, sometimes even sublimated and idealized because you so adamantly refuse any limitation. You have an undying thirst for higher knowledge that can only be gained in the field of spirituality or, in the literal sense, through roaming about remote lands, or also analogically, through interacting with culturally different people who have so much to teach you. Your feelings are coloured with the distinctive nobleness and long-term vision that characterize broad-minded persons who do not look at things with an ego-centered and simplistic glance. It is true that, seen from an airplane, the authenticity of all things important stands out finally with more acute sharpness...

★★★★★ Venus conjunction Mars, orb 1° 3'

With this aspect, innate affective behaviours prevail over opportunisms and calculations. You do not cheat with feelings and you prefer to be guided by your likes ... or your dislikes. Love is neither to be reasoned upon nor to be explained. It is important to experience one's passions spontaneously and to give free rein to the heart's tumultuous manifestations as well as to the body's demands. In other words, to be one's true self in the "now". You need to live intensely, to try all kinds of situations, sometimes to get hurt. Your sensitivity is the driving force behind your decisions and your actions. Real experiences are worth the best intellectual concepts. Spurred by your thirst for emotions, you try to build your life on bases that match your desires. Here, the trap may be that you pay too much attention to your moods and affects. But without them, life would be so dull. Even though emotionalism betrays you occasionally, it remains your best ally.

★★★☆☆ Venus square Pluto, orb 4° 15'

Nothing is simple in love. You consider your love life with a distant and remote glance. You do not believe in obvious, transparent relationships. Love is a complex issue and its machinery is beyond you. To avoid delusions and indifference, the rules must be changed. Your feelings are alternately cruel and passionate, distant and burning, often paradoxical. Are you the executioner or the victim? Power struggles are omnipresent in your affective life. You seem unable to take life as it comes and to love without asking yourself questions, without doubting. You often love those who are indifferent towards you, while you despise those who love you. It is important that you change your attitude if you want a smooth and happy life. Rely on your forte: an indisputable lucidity that makes it impossible to delude your heart.

The Way You Take Action and Your Sexuality

Dwayne Johnson, your mental activity is exuberant. Ideas are buzzing at high speed and you have the ability to think of several different things and to simultaneously process them. You are less interested in actions on the concrete or physical plane, because once you "see" a solution, its implementation is not that important any more since the crucial thing is that your mind remains bubbling with excitement. You

are cerebral and curious and your sexuality is filled with fantasies, where pleasant ideas are mixed up with amplifying and enriching desires. Therefore, you are not simple but if your partner follows you, the stake is really worth it. Verbal jousting, the pleasure to debate and to discuss are continuous, with you. The only danger is to irritate people who may not have your swiftness or your sense of humour.

You may focus all your energy into your ideal, Dwayne Johnson, be it political, religious, ethical, moral or, under its highest form, spiritual. Several areas may be involved simultaneously.

Taking action with all your heart may reveal a dialectics, and you will not rest until you are understood and you have earned other people's adherence. You exchange with keen pleasure. You embrace the causes enumerated above, at the exception of spirituality, as it could never be a subject for proselytism.

You are able to instinctively identify the most important element in life from a remote distance and, inevitably, it does not belong to the material plane. You are not too interested in working for the concrete realm. You aim at longer-term objectives... and even further. Your energy is deliberately, fiercely and boldly poured into the realms of the thought and the soul. You chose them all, some of them may be more futile than others, but they are all oriented towards abstraction, concepts, some of them being often more essential.

Your nature may also be more fact-oriented. In that case, you feel that the enrichment of your soul is particularly favoured when you deal with persons and environments that are alien to you: you express your capacity of action through frequent and long-distance travels so as to progress in your personal quest for knowledge.

★ ★ ★ ★ ★ Mars square Pluto, orb 5° 46'

There is a limit to your respect for laws and norms! Morals, conventions, social marks are of little value to you. With a touch of anarchy in the soul, you disregard conventions and you experience a sort of personal revolution. You prefer unconventional actions to dull conformism. To express your differences, you use a wide scope of possibilities that ranges from brewing revolt to ideological renunciation. Sometimes, you dismiss concrete facts that are nevertheless unavoidable. Hence, you undergo delusions and backlashes. You may also act rashly, to the detriment of your ideals. It is important that you control your actions and that you balance the respect for constraints with your personal demands and inner motivations.

Your Intellect and Your Communication Style

You enjoy discussing and exchanging ideas. You know how to put forward sharp and provoking comments in order to keep the debate moving ahead. You tend to use words to put yourself in the forefront and you may become a leader. Your exact and swift, dazzling understanding favours a direct approach to problems and helpful decisions. You are inventive, intuitive and you are in a hurry to bring your projects to a successful conclusion. You do not pay attention to details and you prefer to go to the essentials. However, your decision-making process may be too impulsive and may throw you into unconsidered actions; this is the reason why it may be good that you listen to other people's advice, that you do not walk headlong, and later, be forced to reverse back as a result, a situation you do not appreciate too much.

It is at work that you can release your mental power full steam ahead, Dwayne Johnson. What's the point

of racking one's brains if it's not to show one's professional value, to climb the social ladder, to earn one's colleagues' esteem, and to improve oneself every day. You adjust very well to your work environment or at least, this is one of your main concerns.

Your intelligence is rather practical or concrete and you are often interested in health and sometimes in pets, and you are very keen to turn each day into a source of intellectual stimulation.

★★★★☆ Mercury opposite Uranus, orb -1° 07'

You are the champion for useless intellectual speculations, for crazy and revolutionary ideas. This Mercury-Uranus dissonance is the signature for an eccentric character, more ready to ridicule generally accepted ideas than to build up stable patterns. Your sense of humour reveals a critical and forceful mind. You can stand for an idea in the face of all opposition but you do not hesitate to support the opposite thesis the day after... with the same conviction. The coherence of your points of view is harmed by these spectacular reversals that constitute your speciality. In the relationship area, you may also provoke dramatic turns of events if your ideas are conflicted. The good news is that it seems difficult to convince you to accept points of view running counter to your principles. Intransigence also has its virtues.

Your Goals, Motivations, Career, and Destiny

Your Sun is posited in the 7th House

To assert yourself, Dwayne Johnson, you cannot rest until you multiply your contacts. Although you do not consciously understand your ambition early in life, you need to shine through your relationships.

It may take the form of a tendency to rapidly get involved in associations, groups or clubs; you feel fine as soon as people are around you because your communication skills are always highlighted and appreciated; your style is not what matters most because your main concern is to be noticed as soon as you are in contact with the world.

You are meant for marriage, the ultimate form of association. Usually, your destiny is dependent on your marriage, either directly through its consequences on your career and your lifestyle, or indirectly and, in the long run, through the supports and help you may gain, particularly owing to your honesty and your assertive skills. Marriage constitutes the apotheosis of your ambitions. As you unconsciously understand it, your entire will strives to achieve this aim since your adolescence. You have the required flexibility and talent to turn the life of your couple into daily harmony.

This area is only one of the facets of the fields where you positively exercise your will but... you do so with so much strength and talent!

With this configuration, everything seems all roses. However, it is not as simple and easy as it may look: your will to shine through others and your almost frantic search for contact may hide a fear of solitude and a lack of self-confidence. Why would you constantly seek confirmation of your own worth into other people's eyes if it were not to dispel your own doubts?

You are easily influenced and your apprehension about loneliness and not being up to it may cause

troubles and out-of-proportion reactions; struggles, conflicts of authority or even lawsuits may be harmful. You often get over them because your determination to show that you are at your best is stronger than anything else.

Your challenge is to manage to please others and to conceal your domineering and too assertive side: however, do not make too much effort because, in all cases, you will be equally appreciated. Remember that it's better to let well alone!

The ruler of your chart is in the 9th House

The ruler of the Ascendant, also referred to as the chart ruler as explained in a previous chapter, is also posited in one of the twelve Houses of the chart. Just like the Sun in his House, the ruler of the Ascendant provides certain abilities, or it makes you appreciate more keenly certain areas of life.

The ruler of your chart is in the 9th House, Dwayne Johnson. This position often gives you a strong taste for travels and foreign matters, whether through frequent real trips, or symbolically, through the pleasure to devote yourself to noble subjects: politics, religion, spirituality, or sciences. You feel the constant need to reach a higher level and to be on the move.

Aspects influencing your ambitions

Regarding your destiny or your career, the following aspects of your natal chart allow to fine-tune what has just been said above:

★★★★★ Sun trine Jupiter, orb 4° 28'

This harmonious Sun-Jupiter aspect indicates an optimistic background that usually wins the entourage's adherence. It also suggests ambition and generosity and favours social integration and success. The desire to earn general consideration prompts you to display energy, joviality and benevolence. However, opportunism may be the other side of the coin. As you strive to win everyone's esteem, you may fall into disrepute. It is important that you remain clear-sighted so as to persistently pursue your long-term aims without believing that you should always « grab each and every opportunity ». However, this aspect remains an element of success because it allows you to adjust your objectives to the context, to whatever the situation offers or, on the contrary, to force your way through events and to achieve your ideals.

★★★★★ Mercury square Midheaven, orb 6° 16'

You are not pleased with the way you intellectually approach your professional goals, or simply your destiny. Because of this mild dissonance between Mercury and your Midheaven, in some circumstances, your communication style is tainted with a few hesitations or clumsinesses. There is nothing serious to worry about, and it is up to you to gradually build self-confidence through the study and mastering of your projects.

★★★★★ Jupiter inconjunction Saturn, orb -1° 52'

Jupiter and Saturn form a dissonance in your natal chart. It is far from being horrendous. This planetary configuration, which is deemed somewhere between the individual and collective characteristics, only indicates that your social integration may be delayed, or may encounter a few difficulties. Such slight delays or setbacks often have their origins in your own behaviour. Indeed, since Jupiter represents laws and public life, and Saturn, seriousness and perseverance, in many instances, you may become impatient,

or even rebellious to any form of authority or legal constraints, to the extent that you cross the white line... When you face such circumstances, you must resign yourself to listening to reason and accept to wait for your turn, lest... your achievements are even more slowed down by your own haste.

★★★★★ Sun sesqui-quadrate Pluto, orb 1° 58'

You are dealing with both sides of the coin. People are mistaken when they think that they know you well, because the image you project does not necessarily depict what you really are. You may look like any given model, whereas you actually consider social values to be empty and childish. Deep down, you are an anti-establishment person and you do not belong to the world and its laws. Or, on the contrary, you may project a more marginalized image and make it a point of honour to literally stick to your aspirations' ethics. You do not know who you are really, and where you stand. You may choose some sort of marginality, the adherence to another realm and a different scale of values. Unless you choose a life that apparently lives up to the expectations of others. In that case, you preserve a corner for your private secrets, with no norms, no fashion concerns, relationships off the beaten tracks, passions very removed from conventions. Your attitudes may seem paradoxical as you shift from commitment to refusal and from involvement to withdrawal.

★★★★★ Saturn semi-square Midheaven, orb 1° 13'

Saturn is in dissonance with your Midheaven, Dwayne Johnson. Of course, nothing really serious is to be feared. It is just that sometimes, you feel that an unfair slowness keeps on delaying the achievements you deem that you deserve right now. You must work twice as hard to climb up the rungs of success, and above all, you must not get disheartened. Effort is one of the values you must work on, and it is a punishment by no means. It is obvious that your goals are achievable, but you must remain on the right track and show perseverance. That's all!

★★★★★ Uranus square Midheaven, orb -7° 23'

Uranus is in hard aspect with your Midheaven, Dwayne Johnson. There is definitely nothing serious to worry about. There may be a lack of perseverance in the efforts you put in order to move forward in your career or your social destiny. When unexpected hurdles crop up, more than anyone else, you must accept the unavoidable changes without losing sight of your aims, and above all, without getting disheartened. More than anyone, you must learn to accept the values of time and duration, if you are to reap their fruits.

★★★★★ Sun inconjunction Uranus, orb 2° 29'

This Sun-Uranus dissonance indicates a dazzling will to be the centre of attention and to proclaim your specificity, by all means. This aspect belongs to the rebel and the revolutionary restive to all forms of authority and of model. To balance this interpretation, the strong need for autonomy bordering on frenzied individualism must be highlighted. You allow nothing or no one to hinder your chosen line of conduct. Obviously, your attitudes are inflexible. You prefer to continue to the bitter end, even when you are wrong, rather than to be more open to people's ideas. Tyrannical attitudes often turn against the perpetrator... However, this configuration is a powerful agent for creativity, provided your hothead and extremist nature is kept under control.

★★★★★ Mars semi-sextile Midheaven, orb -1° 19'

Your energy serves your professional goals and your social ascent in general, Dwayne Johnson. This beneficial aspect of Mars to your Midheaven endows you with strong dynamism, and it rewards your sustained and efficient efforts. You enjoy taking action, and your results are gratifying most of the time.

Your Assets and Your Part of Joviality

The present of the planet of Greater Fortune to you Dwayne Johnson, is a positive predisposition for organization, and the ability to reason thoroughly and on a long-term basis. It also endows you with authority and seriousness in all things: your ambitions are clearly favoured, even though it is detrimental to your warmth, your flexibility or your conviviality. However, you can develop all these sides if you want to.

Dwayne Johnson, the position of the planet of Greater Fortune in this astrological house brings about easy interpersonal relations, your siblings' love, great communication abilities within your neighbourhood, and pleasant short trips throughout your life.

The planet Jupiter symbolizes expansion, broadness and generosity. Jupiter is associated with the functions of synthesis, enthusiasm and optimism. In your natal chart, his house position is more important than his sign position because, like Saturn, Uranus, Neptune and Pluto, he is a slow planet. Many people born in the same period have Jupiter in the same sign. This is the reason why the sign occupied here is less meaningful than when it is occupied by the so-called fast planets, i.e. the Sun, the Moon, Mercury, Venus and Mars. Therefore, some caution is to be exercised as you read what follows.

Jupiter in Capricorn reinforces the zeal to work. Your seriousness and your organizational skills are assets that will develop increasingly throughout your life. This configuration may favour your social ascent. It is usually in the second part of your life that you can fully enjoy its benefits.

Your Serious Side

Your liveliness and your superficiality are slowly transformed into secondarity, profundity of reflection, and interest for knowledge, contacts and logic.

Sooner or later, death and its environment – inheritances, successions, investments, sorrows, or detachment – are areas you will have to deal with, not necessarily in a negative way, Dwayne Johnson. Besides, the Tradition believes that this configuration gives longevity, if other aspects do not strongly state otherwise.

In the affective and sexual spheres, you do not easily grant your confidence, and you need to work on your inhibitions so as to overcome your own fears. Provided you display a strong will, Saturn, as the planet of time, allows you to consider these areas with grace. They become sources of pleasure and joy, under the condition that... you put aside your serious side, precisely. This is likely to occur after your first experiences have taken place.

The planet Saturn symbolizes contraction, effort, time, limitation and concentration. Saturn eliminates anything that is not authentic, sooner or later. It is impossible to cheat him as he gives an irresistible desire to form a coherent whole with oneself, in responsible and wise ways. He is the great purifier. He represents our limitations but also our truth. In your natal chart, the house position where Saturn is posited is more important than his sign position because, like Jupiter, Uranus, Neptune and Pluto, he is a slow planet. Many people born in the same period have Saturn in the same sign. This is the reason why the sign occupied here is less meaningful than when it is occupied by the so-called fast planets, i.e. the Sun, the Moon, Mercury, Venus and Mars. Therefore, some caution is to be exercised as you read what

follows.

Saturn in Gemini decreases your lightness, your frivolousness and your heedless. You become more thoughtful, more concentrate and you learn to deeply funnel your ideals; your practical sense is increased, your concern for punctuality and your thirst for precision are reinforced.

A Few Special Points

Your Uniqueness and Your Utopias

It is within a setting of secrecy or of isolation that unexpected events may suddenly occur. Sometimes, it may be on the occasion of unpredictable events that isolation settles, be it a context of exile, forced solitude such as illness, or imprisonment caused by enmities or by fate.

Great satisfaction may also occur in a secret context. It may be a hidden love affair, an activity carried out in the dark or an association with a person whose identity cannot be revealed.

The areas of the occult or of secrets (espionage, police, secret society, etc.) are frequent causes for change in the course of your destiny. Reversals and incomprehensible disruptions may give you the opportunity to understand that the persons whom you considered as your friends do not side with you, or sometimes, more happily, you realize that the persons whom you considered as your sworn enemies are actually of invaluable help and support, and that they even become... your friends!

Your Inspiration and Your Illusions

Your relationship to money is particularly vague. You tend to avoid analyzing your financial resources, as though this topic were neither important nor real. You belong to the category of people who never know how much they have in their bank account and in their purse.

This approach is positive in that, if you have a strong sixth sense, you can get good bargains more easily than other people... It may be some sort of blindfolded fortune, although there are real dangers of losing a lot and of being deceived.

Beware not to overstep legal boundaries, lest someday your carelessness in the financial area gets you into big troubles. It would be a pity if what you earned, thanks to your sixth sense, were taken away from you.

Your Passion and Your Authority

You have an unconscious desire to experience your ordeals to the bitter end, regardless of their consequences for your future.

Your clear-sightedness and your investigative capacity enable you to solve mysteries in a deep and intuitive way. But they may also lead you into conflicts, crises and confrontations with enemies who are ruthless, at least in your opinion; having said this, you precisely have the ability to cope with them and to

deeply evolve in the process.

You are predisposed to go through ordeals, on the human plane or in the area of health. The pains thus triggered contribute to transform you more rapidly than the majority of people. Your destiny is certainly to progress forward and, above all, to consider such ordeals as stepping-stones instead of signs of some unhealthy fatality.

The Tradition indicates that you may be prompted to take action in humanitarian causes, all the more so, because your personal ordeals incite you to readily help others, even though this tendency is not at once visible.

Your Isolated Planets

In general, the ten planets of the chart are connected to other planets by major or minor astrological aspects. It is owing to those ties that the planets' energies can manifest in the chart owner's personality and play out within safeguards according to a specific tonality.

It seldom happens that in a natal chart, a planet is totally disconnected from the nine other planets.

Astrologers have observed that when such a case occurs, the person feels the energy of the unaspected planet in quite a singular way, very jerky and powerful at the same time. Thus, for instance, the famed astrologer Jean-Baptiste Morin de Villefranche wrote that "an unaspected planet heralds that something strange or extraordinary will take place regarding the meanings of the house in which the said planet is posited" (source : l'astrologie selon Morin).

Rules for detecting an unaspected planet: among all the testimonies that we have reviewed to this day, based on our experience, we tend to agree with American astrologer Janis Huntley who accepts seven aspects, which involve the zodiacal twelve sections of 30 degrees. The aspects to be considered are the conjunction (0 degree, cooperation or tension), the semi-sextile (30 degrees), the sextile and the trine (60 and 120 degrees respectively, aspects of cooperation), the square and the opposition (90 and 180 degrees respectively, tensed aspects), and the quincunx (150 degrees, slightly tensed). In this detection, the chart's angles are not taken into account.

In any case, it is important to remember that an isolated planet clearly expresses its influence when it is a personal planet. Thus, when the Sun, the Moon, Mercury, Venus, or Mars is isolated, it is certain that the effects described by Jean-Baptiste Morin de Villefranche will become manifest. As for Jupiter, Saturn, Uranus, Neptune, and Pluto, one must be cautious because the volume of cases documented is not yet large enough.

Your chart has no isolated planet, and this particular case does not apply to you.

Annex 1: Your Minor Dominants

The five following dominants are less significant than those described at the beginning of your report. They may not be strongly felt. In some cases, they add several minor details to the analysis of your character, but they are rather for curiosity purposes. It is not necessary to take them into account when you first read your portrait.

Your Planetary Repartitions: Northern, Southern, Eastern and Western Hemispheres

The axis linking the 1st house's cuspid (the Ascendant) to the 7th house's cuspid - the Descendant - divides the zodiac into two bowls, a superior bowl, in the South, and an inferior bowl in the North. Quoting an expression by the famous American astrologer Rudhyar, the Southern part and the Northern part correspond to two functions: "being" and "doing". Other concepts are also associated with this North and South distribution, such as introversion - Northern hemisphere - and extraversion - Southern hemisphere - being or appearances, inner life or external life, reflection or action, dreaming one's life or living one's dreams, the abstract or the concrete, backstage or limelight.

This is not about determination but about personal inclination: thus, some people will be thrown into public life despite a prominent Northern hemisphere. If this happens, however, it will not be due to their will, their taste or their deep nature. Conversely, a prominent Southern hemisphere will not bring about a famous destiny to its owner, even if he tends to turn the spotlight on himself, or if he looks for a more active life. It is a matter of deep nature and natural inclination. Of course, none of the typologies is "superior" to another.

In your birth chart, Dwayne Johnson, the ten main planets are distributed as follows:

Your Northern and Southern Hemispheres



Dwayne Johnson, the predominance of planets in the Southern hemisphere prompts you to take action, to draw attention on yourself, and to make your actions and what you have in mind visible to everyone. Sometimes, without giving a single thought to, and to the detriment of, a richer inner life and a deeper and wiser reflection. Action and communication are inevitable in your opinion, and you tend to think that the only thing that matters is what is seen! This is not always true, and it is up to you to progress through the development of inner qualities such as meditation, solitude and imagination so as to become stronger.

The birth chart is divided into two other parts, Eastern and Western, by the axis linking the Midheaven to the Imum Coeli.

The Eastern part, on the Ascendant side, shows the person's ego, will, magnetism, and vitality, whereas the Western part, on the Descendant side, symbolizes other people, communication, relationships and their influence, as well as flexibility and adaptability.

Dwayne Johnson, here is the planetary repartition in your Eastern and your Western hemispheres:

Your Eastern and Western Hemisphere:



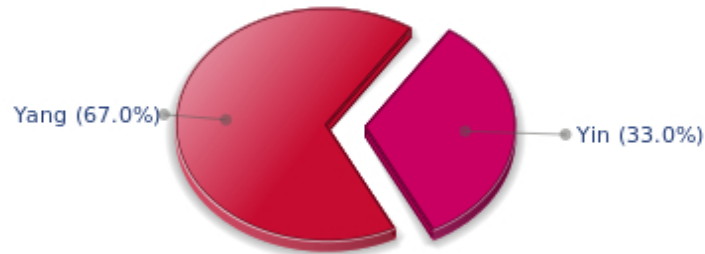
The predominance of planets in the Western hemisphere of your chart means that you are quite flexible, capable of empathy, convivial and communicative. An excellent factor for many professional activities or for your social or sentimental life for example.

A definite asset... provided that you are not at the centre of the decisions you must take in your life: you may be tempted to listen to the last person who spoke, and your flexibility won't always get you out of the tight spot. You are therefore advised to learn to decide alone and to cope with the consequences of your actions with courage and without regrets. This attitude will allow you to combine flexibility and action, adaptability and absence of hesitation.

Your Yin and Yang Polarity

The twelve signs are divided into two polarities, called active or passive, or sometimes masculine and feminine, positive and negative, Yang and Yin. This classification corresponds to two quite distinct tonalities, the first one bringing extraversion, action, self-confidence and dynamism, the second one, introversion, reactivity, reflection and caution. None is superior to the other, each group has its own assets and shortcomings. Odd signs - Aries, Gemini, Leo, Libra, Sagittarius and Aquarius - belong to the first group, whereas even signs - Taurus, Cancer, Virgo, Scorpio, Capricorn and Pisces - belong to the second group.

Your Yin and Yang Polarity



According to the disposition and qualities of your planets and angles, you are rather influenced by Yang energy, the active polarity, Dwayne Johnson: more concerned about actions than reflection, you sometimes rush without standing back and without the deepness that is needed. However, your spontaneity prompts you to take fresh starts, even after repeated failures caused by your rashness.

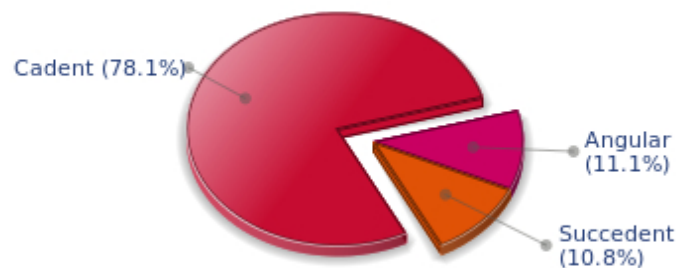
Your Houses' Accentuations

Houses are split up into three groups: angular, succedent and cadent.

The first ones are the most important ones, the most "noticeable" and energetic houses. They are the 1st, 4th, 7th and 10th houses. Their cuspides correspond to four famous angles: Ascendant for the 1st house, Imum Coeli for the 4th house, Descendant, opposite the Ascendant, for the 7th house and Midheaven for the 10th house, opposite the Imum Coeli.

Planets are evaluated according to a whole set of criteria that includes comprehensive Western astrology rules. At their turn, planets emphasize specific types of houses, signs, repartitions etc., as previously explained.

Your Houses' Accentuations



Cadent houses, namely the 3rd, 6th, 9th and 12th houses, are very emphasized in your chart, Dwayne

Johnson. They indicate important potential for communication, adaptability and flexibility. These houses are symbolically linked to the mind and intellect. The relative weakness implied by these characteristics indicates your tendency to hesitate or to be indecisive, but also your remarkable ability to start off again, which is a nice quality, finally: you can easily get yourself out of a tight spot thanks to your mobility and casualness, in the best sense of the term. This group of houses corresponds to evolutionary characteristics of your personality. However, they are only indications and you must include them in the rest of your chart in order to see whether they are validated or not!

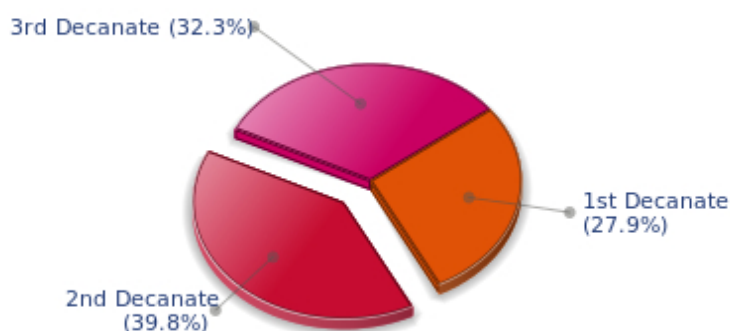
Your Esoteric Decanates

Each sign contains 30 degrees and can be divided into three equal parts: the decanates. The Tradition indicates that specific meanings can be associated to each of the three decanates. Their sphere of activity is usually limited to the Sun sign, however, it is even more interesting to observe the distribution of all the planets in the chart to get an idea of the respective importance of the three decanates, which can complement the description of the personality.

These meanings must be considered with the greatest caution. Indeed, they are minor characteristics that can only underline other outstanding traits of character.

Traditionally, the first decanate highlights the characteristics of the sign where a planet is located. The two other decanates correspond to sub-dominant planets, depending on the nature of each sign. This system leads to a multiplication of meanings and it is impossible to have a clear understanding: here, we prefer to give only the meaning of one decanate in comparison with the other two, within the birth chart as a whole. Again, the greatest caution is needed with regard to this minor indication as it is not always reliable: it is not essential that you read these texts in the beginning. You can get back to them later on, once you have read more important interpretations

Your Esoteric Decanates



The second decanate, which means the part between 10° and 20° of any zodiacal sign, prevails in your natal chart, Dwayne Johnson: these 10 zodiacal degrees emphasize logical thought and mental values. Therefore, you may be drawn to some kind of scientific activities, research, writing or any sort of expression where you have to... think a lot.

Annex 2: Karmic Study

The karmic theme is a good complement to the psychological portrait, or natal chart. This analysis is based on the positions of the Lunar Nodes, the Black Moon and the Part of Fortune: they are also called fictitious points and describe the spiritual purpose of your destiny. Because there is in all of us an experience and a quest, our life is an evolutionary journey... provided that we head towards the right direction, of course! Indian astrologers highly prize the Nodes axis (North Node and South Node). It is the Ariadne's thread that we are invited to follow. The Black Moon indicates the sector where we are most likely to transform or to transcend, whereas the Part of Fortune points out the area where we can easily express our specificity.

The Lunar Nodes: a spiritual path

Lunar Nodes have their roots in the Indian tradition and they are based on a simple concept: each of us have a mission of their own, here on earth, a destiny, a course. According to the Indian philosophy, life is a school: the nodal axis describes our past experiences (South Node, our karma, our spiritual inheritance or our previous lives), and our aims on earth (North Node, our Dharma, the purpose of our current incarnation). This is the reason why the study of the lunar nodes is called "Karmic astrology". Here, we shall not step into hypothetical past lives. Wherever our current trends may come from, all that really matters is that we become aware of the purpose of our life, its finality and our dharma. We are likely to understand our life purpose around the age of 37, when the Lunar Nodes return to their natal position.

Your life is marked with the major challenge of developing your social image, of asserting your personality... and of leaving your shell. Your childhood and your family roots are very present. You have an inclination for quietness, protections and intimacy. You enjoy at will the moments when you feel "at home", in known territory and familiar situations. But you must learn to thrive in society, to give of your best, to socially shine, particularly when you feel that external pressure and opinions are upsetting. Do not fall in the trap of your dreams and souvenirs! Life implies responsibilities and the will to control, otherwise you cannot feel your true self. You may be too dependent and you must learn to slowly become autonomous, free to take decisions and to take action. Your sense of duty allows you to climb all the steps of a perilous, yet thrilling, social ladder. As years go by, you claim more autonomy, more power and more freedom of action.

Your entourage respects your manner: you belong to the category of persons who arouse their close friends' consideration because of their straightforward, sometimes rigid attitude. The concern that you must "maintain your rank" may increase the severity of your judgments and lead to intransigence. You are sensitive to the prestige of your social standing and you show an acute sense of responsibilities since your youth. You become an adult early in life and you always avoid dependency. Your life's challenge is to learn to handle your intimate and family life as well as you manage your career. In the private sphere, you may undergo difficulties: you are a real loner and you turn down any help and affection offered by your entourage. You deny yourself the sweetness of a comfortable and reassuring home. However, as time goes by, you will overcome your reluctance and you will allow what you most value, deep down: love and tenderness to blossom within a privileged relationship, within a family...

Lilith or the Dark Moon

The Black Moon is the spark of refusal and distance that is dormant in all of us. Depending on the sign where she is found in your chart, she highlights the desire to transform and to sublimate a part of your life. The Black Moon is unfathomable and mysterious. She gives a different dimension to the sector she

touches. Her manifestations are subtle; nonetheless, she is powerful, implacable, demanding to the extreme... The Black Moon is also called Lilith. She is the inner flame of your heroism and insubordination.

This configuration predisposes to the quest of the absolute on two accounts: firstly, the very nature of the Black Moon, implacable and extremist, and secondly, she is in a sector of the Zodiac that is traditionally evolutional but extremist. Here, you flirt with death, danger and challenge. Everything suggests transformation, abandonment and revival, passion and cruelty. There is no half-measure in your behaviour, only a terrifying and marvellous thirst for the absolute... That'll take some doing for the person who will experience it with required intensity!

Your approach to comfort and pleasure is paradoxical: you deeply long for a realm where your senses and your desires can be fulfilled at will. However, you are so demanding that you may refuse the simple joys of life and you prefer an absolute quality of life... an absolute that is often inaccessible, but so thrilling!

The Part of Fortune in House

The Part of Fortune is a very ancient fictitious point that depends on the lunar phase at the time of birth. The astrological house tenanted is particularly strengthened. In your chart, the Part of Fortune is in the 8th house: you need to constantly transform your life, to evolve and to shed your skin. You do not hesitate to regularly question the basis of your manner. Everything is death and revival and the wheel of life is ruthless: what was still yours yesterday will be a mere souvenir tomorrow... Your wealth is the know-how you demonstrate when you cope with changes imposed by events, while always remaining true to yourself.

Retrograde Planets

The karmic tradition insists on the issues related to the so-called retrograde planets. They are considered to be the inheritance of a past that was not well experienced, a sort of unfinished business. The interpretations of the retrogradation may seem negative or excessive to you. However, you may relate to a scenario that you have often and repeatedly experienced... as if you underwent several setbacks that all have the same cause. Until the day you become aware of it and you can free yourself from it! Through the slow integration of these planetary energies, you will be able to overcome your difficulties and to pay your karmic debt. Actually, each retrograde planet highlights an opportunity for evolution. Nothing can be achieved without the will to grow spiritually and to defeat your own demons.

With Jupiter retrograding on the day of your birth, the lesson is about grasping the opportunities that are offered to all of us but that some people take advantage of, while others don't. Persons who quickly adjust to circumstances are more likely to achieve their ambitions than those who need to be encouraged to take action. During your childhood, you may not have efficiently responded to life's concrete enticements, leaving other "luckier" people to achieve what you were dreaming of. You preferred to enjoy yourself, here and now, rather than to look for new paths of development or exploration. It is possible that you were not optimistic enough. Enterprising minds were alien to you... Later, you find out that, indeed, you give little importance to the credit of the frenzied expansion praised by the modern world. Your path is not oriented towards personal prestige. With subtlety, you integrate non-material values and you accept well the fact that you missed past opportunities.

Uranus was retrograding on the day of your birth: you have the soul of a rebel and your behaviour may often be tyrannical or extremist. Your manner has brought you setbacks. You lack the flexibility that

sparing you the pain of forcing your ways through events. The danger may be that you get trapped into rigid patterns and into personal logics incompatible with others'. This is precisely what your life's lesson is about: as years go by, your judgments are more qualified and your attitudes become less cut-and-dried, less stubborn. You must lose the essentially individualistic character of your childhood and be more open to other people's ideas and problems. In other words, a path of love. Without losing your remarkable resolution, you must practice some form of renunciation and be sensitive to various logics that constitute the wealth of your social life.

Neptune retrograding concerns spirituality. You may have expressed early in life a few reluctances about the subtle world of faith. You may have ignored destiny's signs and winks and you preferred to stick to your certainties, to a rigorous and objective control of your life. You dread your own aspirations and you readily trust others': this causes a lack of autonomy and the feeling that you may not receive as much as you give. However, several delusions teach you that you must relativize your calculating and methodical attitude and open up to the irrationality of love in order to find an inner and more spiritual progression. Embracing the invisible is a process that unfolds as years and experiences go by. Your own generosity increases as you become aware of your entourage's generosity.

Pluto retrograde suggests power issues and mishandled relations: for you, everything comes down to power struggles, submission and domination, Machiavellian manoeuvres, including within your couple... The results are complex behaviours and an obsession for the power to influence people. Yet, life teaches that you must simplify your relations and adopt more transparent attitudes and healthier desires... As years go by, you will tend towards more simplicity and you will slowly discover that human energy can, and must, be at the service of the good, or of well being, in compliance with our individual progression.

N.B: modern astrology attaches less and less importance to the principles of retrograding planets.

Conclusion

A few remarks are needed here in order to allow you to fully take advantage of your astrological portrait: firstly, do not forget that a birth chart is also a photograph of the sky at birth and a structure that not only contains the personality's characteristics, but also its potential evolution.

We all know that, in real life, people begin to know themselves when they are in their forties, or even later. Likewise, several traits of character in a portrait may seem surprising: in most cases, it means that such features are not yet developed.

Some personalities reveal themselves late in life, whereas others are more precocious. It must be remembered that psychological structures are in a state of continuous evolution because they are influenced by unfolding events and gradual maturity. We can never underline strongly enough the "mobile" nature of the personality, throughout a lifetime.

On the other hand, it is difficult to discriminate what is "already present" at this moment in your life when you are reading your chart's interpretation, from what will appear later in the logic of your evolution: you must sort out all the pieces of information provided and, in most cases, you will see that your astrological portrait is helpful for your endeavours to know yourself better.

Finally, several readings of an astrological portrait are usually necessary in order to absorb all its different meanings and to evaluate the relevance of each character trait.

In any case, better self-knowledge obviously contributes to faster personal blossoming, and it is undoubtedly one of astrology's major roles: contributing to know oneself better, in order to improve more rapidly, to deal with one's weaknesses and to avoid its drawbacks, and to take advantage of one's assets as efficiently as possible.
