



## Donald's Career and Vocation



<b>Introduction</b>	<b>3</b>
<b>Natal chart and planet's position</b>	<b>5</b>
List of your active planetary aspects	6
<b>Possible jobs, motivation and assets</b>	<b>7</b>
Your suitable jobs, your career	7
Your professional motivation	8
Your assets and your weaknesses	9
<b>Alternative professional paths</b>	<b>11</b>
<b>The daily atmosphere at work</b>	<b>13</b>
The nature of your daily work	13
The way you experience your professional duties	13
<b>The money earned through your work</b>	<b>14</b>
<b>Your integration and career development capacities</b>	<b>14</b>
<b>Predispositions which may have an influence</b>	<b>15</b>
<b>Conclusion</b>	<b>18</b>





# Donald's Career and Vocation

## Introduction

What is my calling? Is my job made for me? If I feel like changing direction, which one may suit me? Have I got several options? Am I right to undertake this training? Here are questions which may pop up at any stage of our life, bearing in mind that our modern society forces us to do soul searching more than in the past. In addition, the professional context has become tougher, and often compels us to take stock of our potential and our aspirations.

For this report, focusing on career and vocational guidance, we have chosen to analyse the features specific to these areas, leaving aside those which are related to the personality in general, such as for instance the Sun sign - Ascendant combination, which provides only indications on the character: indeed, one may very well have a career in the military while being a Cancer or a Pisces. Similarly, one may be a perfume creator and an Aries or a Sagittarius.

In the case we are interested in, i.e. carrying out an astrological diagnosis of your social and professional destiny, it is the 10th House taken in its entirety, starting with its cusps, the Midheaven (MC), that we assess in detail. It is necessary to examine the sign it tenants, the aspects formed by planets if any, as well as their presence in the 10th House. Technically, the position of the axes is given by the time and place of birth. Therefore, it is a particularly precise and personal indicator.

Traditionally, the whole 10th House provides information on the social status and the success concretely seen by everybody. It is a "brilliant" House, as demonstrated by many acclaimed astrologers, and the planets conjuncting the MC axis are often dominants, and those in the 10th House are always important for the entire chart. Among other works, we refer in this regard to the researches of Michel Gauquelin, who has established statistics showing this power of influence. It goes without saying that these effects are mainly felt in the social and professional area.

However, one must not deduce a contrario that people having no planets conjunct the MC or even posited in the 10th House will not experience a remarkable professional destiny. In the charts of Barack Obama, Steven Spielberg, or Rupert Murdoch, there are no planets in this House. Nevertheless, their destiny will go down in history. Why? Simply because other indicators are at play.

Beyond idealistic concepts like destiny, each of us is led to practise a job or to accomplish

daily routine tasks, which are utterly important, given the time we dedicate them. This practical profile, which concerns our duties, is described by the 6th House. The astrologer finds there elements on the ambiance which may suit us, and on our relationships with colleagues or possible partners.

It is also necessary to examine income. Don't we say "to earn one's living"? When the moment comes to choose a profession, we wonder whether it will feed us. This is why we must mention it and analyse the ruler of the 2nd House as well as the planets posited in this House.

Work is above all a powerful agent for social integration. Ideally, everyone is prompted to bring one's personal qualities into the public sphere. The role of Jupiter and his possible link with Saturn is studied here as a factor of adaptation to society.

The distribution of the planets in the natal chart also provides additional fine-tuning or further confirmation of certain characteristics regarding the way the person experiences his professional development.

Let us precise once more that, in our opinion, each sign enables to practise any activity. On the other hand, the person concerned behaves in ways which are specific to each zodiacal temperament.

Since astrology is neither deterministic nor fatalistic, your chart will not stick a label or define a precise job for you. But it will offer food for thought based on your penchants, your talents, and your competences.

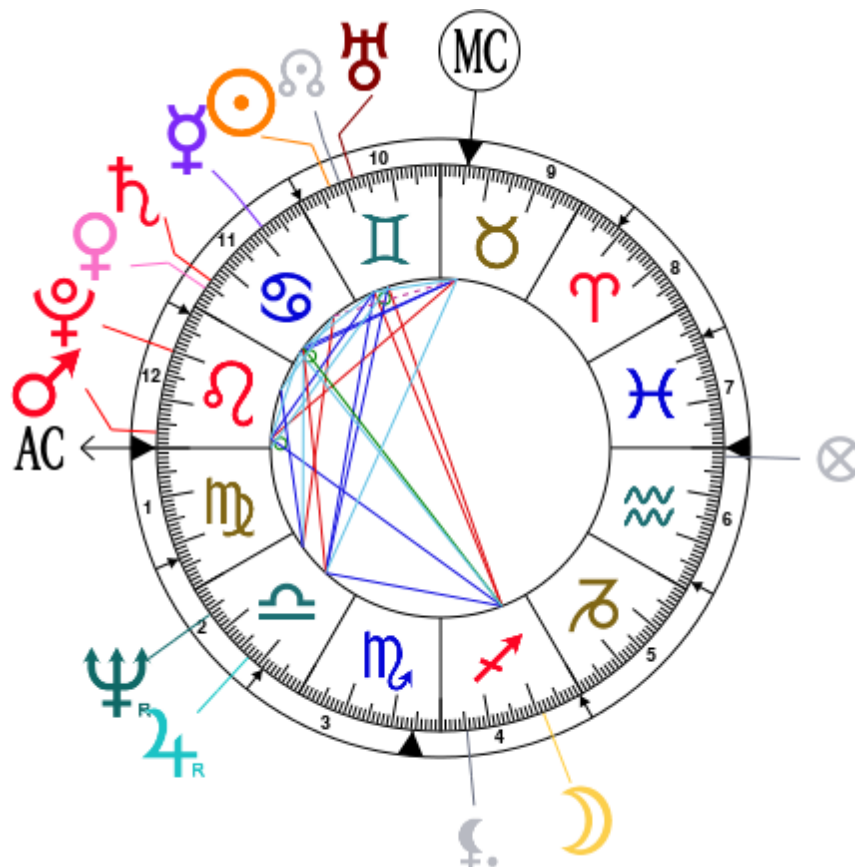
Thus, we hope that this report will enable you to better discern your natural affinities so as to find the best suitable path.

# Natal chart and planet's position

Donald, born June 14, 1946, at 10:54 AM, Jamaica (Queens), New York [73.48W ; 40.41N ; 4W00]

Natal Planets				In House	Natal Houses (Placidus)	
☉ Sun	22°56'	♊ Gemini	House 10	House 1	29°58'	♌ Leo
☾ Moon	21°12'	♐ Sagittarius	House 4	House 2	23°01'	♍ Virgo
☿ Mercury	8°52'	♋ Cancer	House 11	House 3	21°13'	♎ Libra
♀ Venus	25°44'	♋ Cancer	House 11	House 4	24°22'	♏ Scorpio
♂ Mars	26°47'	♌ Leo	House 12	House 5	29°21'	♐ Sagittarius
♃ Jupiter	17°27' R	♎ Libra	House 2	House 6	1°45'	♑ Aquarius
♄ Saturn	23°49'	♋ Cancer	House 11	House 7	29°58'	♑ Aquarius
♅ Uranus	17°54'	♊ Gemini	House 10	House 8	23°01'	♓ Pisces
♆ Neptune	5°51' R	♎ Libra	House 2	House 9	21°13'	♈ Aries
♇ Pluto	10°03'	♌ Leo	House 12	House 10	24°22'	♉ Taurus
♁ Node	20°48'	♊ Gemini	House 10	House 11	29°21'	♊ Gemini
♁ Lilith	5°21'	♐ Sagittarius	House 4	House 12	1°45'	♌ Leo
AS AS	29°58'	♌ Leo				
MC MC	24°22'	♉ Taurus				

In keeping with the common practice, we consider that a planet posited within 1 degree of the next house belongs to that house. We allow an orb of 2 degrees for the ASC and the MC.





## List of your active planetary aspects

Below, provided for information purposes only, are the list of all your active aspects.

Stars indicate the strength of the aspects. The yellow colour indicates a soothing and conciliating aspect, and the red colour, a dynamic and tense aspect. The red aspects enable you to evolve, to take action, and to learn to turn your "weaknesses" into assets through your life experiences. The yellow aspects are innate strengths on which you rely in order to grow better with the former.

N.B.: to assess the condition of the rulers of the 10th and the 2nd Houses, as well as the condition of the planets in the 6th and the 10th Houses, all aspects between planets are taken into account, except for the aspects to angles, given their passive nature.

★★★★★	Sun opposite Moon, orb -1° 43'
★★★★★	Sun sextile Mars, orb 3° 5'
★★★★★	Sun trine Jupiter, orb -5° 28'
★★★★★	Sun semi-sextile Saturn, orb 0° 53'
★★★★★	Sun conjunction Uranus, orb 5° 02'
★★★★★	Sun semi-sextile Midheaven, orb -1° 26'
★★★★★	Moon bi-quintile Venus, orb 1° 27'
★★★★★	Moon trine Mars, orb -5° 34'
★★★★★	Moon sextile Jupiter, orb 3° 45'
★★★★★	Moon inconjunction Saturn, orb -2° 36'
★★★★★	Moon opposite Uranus, orb -3° 18'
★★★★★	Mercury square Neptune, orb -3° 01'
★★★★★	Mercury semi-sextile Pluto, orb 1° 1'
★★★★★	Mercury semi-square Midheaven, orb -0° 3'
★★★★★	Venus semi-sextile Mars, orb 1° 02'
★★★★★	Venus conjunction Saturn, orb 1° 55'
★★★★★	Venus sextile Midheaven, orb 1° 22'
★★★★★	Mars conjunction Ascendant, orb 3° 11'
★★★★★	Mars square Midheaven, orb 2° 24'
★★★★★	Jupiter square Saturn, orb -6° 21'
★★★★★	Jupiter trine Uranus, orb -0° 26'
★★★★★	Jupiter bi-quintile Midheaven, orb -0° 54'
★★★★★	Saturn quintile Neptune, orb 0° 01'
★★★★★	Saturn sextile Midheaven, orb -0° 33'
★★★★★	Uranus quintile Ascendant, orb 0° 04'
★★★★★	Neptune sextile Pluto, orb -4° 12'

## Possible jobs, motivation and assets

### Your suitable jobs, your career

According to the Tradition, which dates back to Ptolemy, the 10th House, which begins with the Midheaven (MC), describes honours and dignities. The whole House gives the image of your overall destiny, with your major goals and your vocation, if it can be expressed openly. It is about potential for outstanding achievements and not about work as a means of existence.

Technically, the 10th House may include one or two signs, sometimes three. However, this report delineates only the MC, much more decisive according to the statistics, and essential in any case. The cusp of this axis points directly at the stars, since it is also the zenith of the chart. Therefore, its symbolism is clear. It speaks volumes about your ambitions, your lifestyle, your social status, and your social and professional success, as noticed by other people.

### Your MC is in Taurus

Your public destiny must be synonymous with realisation, Donald. The MC in the 2nd zodiacal sign indicates that you prefer stability as far as your profession is concerned. Your first choice has been thoroughly pondered over. It has proved steady and may even last for good. Provided a decent level of comfort and income is secured, because you hate uncertainties, you have nothing against keeping the same job all your life.

Among your assets, one must mention your enormous capacity for hard work and your strength of character which commands the admiration of your leaders, your colleagues, or your partners.

You need to feel and to touch concrete things. You are unable to work only on concepts. You must see quantifiable results, so as to assess the work accomplished. With the MC in this position, you are pragmatic above all. No matter how much time it will take to achieve your ambitions, you will not stop on your road.

You are comfortable with jobs linked to finance. You understand the meaning of money, which you tie to commitment and toil. For instance, banker, accountant, wealth manager.

You show an aptitude for the civil service and the public administration, but real estate may also suit you perfectly well.

It is possible to imagine you in professions matching your penchant for nature: farmer, landscape gardener, forest warden, horticulturalist, botanist, breeder.

Owing to your artistic gifts, especially in music and entertainments, you may become a singer, rather in the classic or pop genre, a sculptor, a dressmaker or a theatre actor. In addition, staging may be a good option.

The other options involve your taste buds: apprentice cook, innkeeper, but mainly chef or even pastry cook.

Your penchant for construction may turn you into a carpenter or an architect.

The keywords defining your social and professional fulfilment are as follows:

Construction, patience, long-term projects, effort, materialism, power and sweetness, hedonism, solidity, loyalty.

## Your professional motivation

You may not have been able to identify yourself with the concrete jobs enumerated at the end of the chapter dealing with the MC. Indeed, we carried out the exercise bearing in mind that it is impossible to give an exhaustive inventory for each of the twelve signs. Therefore we have chosen to limit it to the most typical ones, according to the traditional interpretation. However, a human being never corresponds to a "cliché".

On the one hand, there are so many medical practitioners, carpenters, or civil servants that the list could be endless, whether they are Aries, Taurus, Gemini, etc. The only nuance is that they are likely to practise in an Aries, Taurus, Gemini, and so forth, manner.

On the other hand, the world is changing, and nowadays, there is a large range of options which evolves fast. Fortunately, other indicators enable us to complete the picture. To begin with, we assess the role of the MC ruler, which also provides information on the way you work and how your vocation was born.

## Your MC ruler is Venus

Donald, after having found the position of the MC, we focus on the planet ruling this sign, namely Venus. She will tell us more about your professional motivations.

It is very simple. You need seduction, charm, love, or beauty! One might as well say that your motivation may dwindle if you experience a lack of recognition in this regard. You pay high attention to nice colleagues, clients, or partners. You need to win the approval of everyone, and you nip in the bud any possible conflict.

Ideally, your appointment should have occurred harmoniously, and you appreciate to be showered with praises. Fortunately, you are often blessed with good luck.

If possible, try to choose an environment full of calm, luxury, and sensuality. For instance, artistic circles attract you irresistibly.

## The ruler in the 11th House

Donald, after having found the location of your MC and its ruler, we now look at the latter's position in House. This is how we get additional clues to your professional motivation, which may confirm the above, or sometimes, be completely different. Should this case



occur, bearing in mind that a career profile is seldom uniform or bland, the possibilities of progress are widened.

In your chart, Donald, the ruler of the MC is in the 11th House. Therefore, your professional destiny is facilitated or marked by associations, friendships, and collective companies.

You instinctively seek allies among those who prepare projects similar to yours. You need to imagine yourself in the future in order to anchor your professional choices. Whether you do so in a very concrete way, in accordance with a utopia or a political idea, is finally of little importance. In any case, it is certain that you can find help and protections on your route.

To conclude the analysis of the ruler of your MC, we examine its condition, namely the number of positive and/or negative aspects it receives, among other factors, including the sign in which it is posited.

Donald, your ruler, Venus, is in good celestial condition. This means that this planet receives mainly favourable aspects, or that they are more numerous and more important than those considered to be tough aspects. Therefore, you can rely on all the various positive facets of Venus.

## Your assets and your weaknesses

Planets could be considered as lever arms enabling you to further your career. They influence this area of life according to their specific nature, and they show how you approach vocation, work, or social status.

When they are in the 10th House, their impact is direct, noticeable, and obvious. This applies all the more strongly to conjunctions with the Midheaven (MC), in which case they favour your position, or they warn about possible pitfalls. To use a metaphor, a planet on the Midheaven resembles a person who expresses easily his character, his temperament and his tastes when he deals with his career.

However, the 10th House is empty in many charts. This does not mean, in line with what we have written in the introduction, that this area of life is uneventful. In such cases, the analysis should focus on the Midheaven and on the ruler of the 10th House, which are not affected by the presence of other planets.

As far as your assets and weaknesses are concerned, it is also necessary to examine the planets aspecting the MC. Similarly to a presence in the 10th House, the aspect of a planet's specificity colours your social destiny, for good or ill.

Here again, in some natal charts, there is no relationship between the planets and the MC. This leads us to draw the same conclusion as that which we have just underlined whenever the 10th House is empty. This does not mean that there is nothing interesting to say, only that the interpretation must be limited to delineating the sign sheltering the MC and its ruler, who remains the "sole person in charge", regardless of his position in the chart.

## The Sun in the 10th House

Donald, in your chart, the Sun is in the 10th House. This implies that your main experience in terms of achievement and creation concerns your work or your social position. You are predisposed to spare no efforts in order to be successful, because honours and external signs of accomplishment have a tremendous value in your opinion.

The Sun in the 10th House tends to socially elevate from the initial condition. Unless there are severe afflictions indicated by negative aspects, your chances to shine in society are good.

You impose yourself, and you may be authoritarian and influential.

You are usually self-assured, sticking to your preferences and your desires. Vocation seems to be obvious. The Sun is a factor of stability in your social and professional life, because you have classic tastes.

Among possible flaws, arrogance may cost you a lot in society. Your tendency to systematically hog the limelight, almost without being aware of it, may be badly perceived.

The Sun prompts you to assert yourself in any activity requiring a strong sense of responsibility and autonomy. Indeed, you need to represent or to embody values or functions in a public manner.

This planet in the 10th House is also a sign of creativity in your lifestyle.

Donald, the Sun is in neutral celestial condition. In general, it brings about neither special obstacles nor additional support for the expression of your professional motivation.

## Uranus in the 10th House

Donald, in your chart, Uranus is in the 10th House. This implies that your social and professional destiny is full of unforeseeable events.

You have a strong need for individualism, which may translate into an independent career without too many constraints. You are obsessive about standing out of the crowd. You believe that differences or originality are desirable values. Your dream job would be innovative, modern, or not yet existing. In a way, you wish to be a pioneer in your field of competence.

You hardly stand rules or rigid settings.

On the downside, this position may suggest the impossibility to adjust to the professional context. Uranus in the 10th House may also bring about a hectic route, with dramatic turns of events occurring when you least expect them.

Donald, Uranus is in neutral celestial condition. In general, it brings about neither special obstacles nor additional support for the expression of your professional motivation.

## Venus in sextile with your MC

Donald, in your chart, Venus is positively linked to your MC. This aspect is not as strong as when the planet is posited in the 10th House, but it has many things in common with this case, though to a lesser extent. Venus endows you with interpersonal skills, a pleasant character, and powers of seduction, which is quite useful for furthering your career. It may happen that romantic relationships occur in this circle, or that you meet your soul mate at work, or that someone supports your advancement for affective reasons. Lastly, Venus symbolises art and beauty. Therefore, this is a sign – among others – that you have the possibility to be tremendously successful in those fields.

## Saturn in sextile with your MC

Donald, in your chart, the planet Saturn is favourably linked to the MC. It is a sign that your efforts, no matter how gruelling, usually end up being fruitful. You should adopt the saying "time will prove you right", because patience and perseverance alone can help you progress in your career. Although nothing comes to you easily, rest assured that everything you build has very solid foundations. Loyalty, seriousness, and fidelity are valuable assets for your success. Lastly, you prefer the path of conservatism and that of tradition.

## Mars in square with your MC

Donald, the tense aspect Mars forms with your MC indicates that trials of strength are on the agenda when you decide to achieve your social objectives. You may give the impression that you are ruthlessly ambitious, and you may stir trouble. You may undergo problems adapting to people, who sometimes find that you are too peremptory. There are a host of rivals standing in your way in order to take the place you are coveting. Be careful not to throw a tantrum or to make blunders or reckless moves which will backfire on you. You must restrain yourself, slow down your pace, and remain Zen if you experience a conflict. Then, everything will be much better.

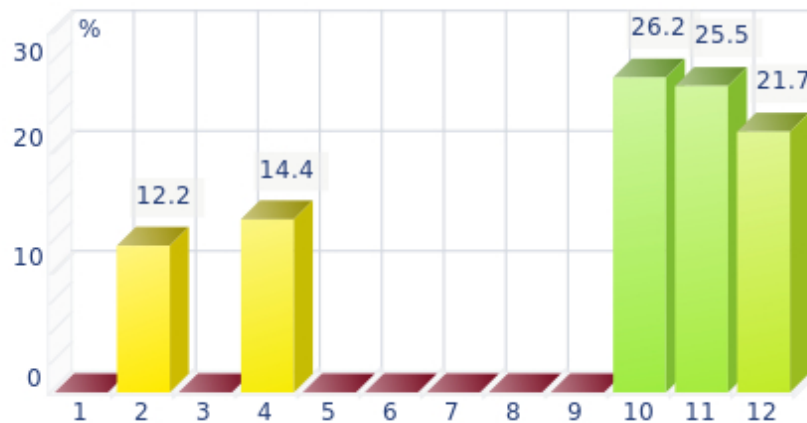
## Alternative professional paths

In the previous chapter, we have seen the meaning of the Midheaven and of its ruler. Indeed, in many cases, they can provide relevant information about your professional future and about the most suitable paths for you.

However, the Midheaven, the 10th House, and the 6th House, which are discussed further down, do not always reveal the entire range of social and professional possibilities of your natal chart. Certain areas of life – symbolised by the 12 astrological Houses of your chart – are highlighted by the presence, the dignity, or the activity of the planets posited in them.

Some Houses are deemed dominant. They give additional indications in terms of taste, of desire to express your talents and to spend your energy, especially in your work. They represent different potentialities, which are offered to you in addition to those mentioned in the other chapters.

## Your Dominant Houses



We are describing here the meaning of your dominant Houses, except the 6th and 10th Houses, already analysed in this Report, and the 1st House, which is not related to any concrete life area and therefore can provide no information here.

### The 11th House is one of your dominants

The 11th House is that of support, protection, and friendship. It also represents collective projects, hopes, humanitarian and social causes, facility for joining groups. It is a House which may have less concrete implications than some others in terms of professional occupation, but which on the other hand is more general and offers more possibilities of career.

With an 11th House among your dominants, you are certainly prone to work with a group rather than solo. Jobs related to ecology, climatology, trade unionism, humanitarian help, NGOs may perfectly suit you.

By analogy with the sign of Aquarius, other professions may suit you: film director, pilot, astronaut, radiologist, inventor, specialist in the development of high tech products, engineer, psychotherapist, audio-visual technician, electronics specialist, computer programmer, or webmaster.

### The 12th House is one of your dominants

The 12th House is the house of secrets, hospitals, specialised care or detention institutions. It is that of ordeals to be experienced, enemies, retirement or exile. It is not “worse” than another House, but its specificity is to be related to the hidden world and to inner life rather than to visible and media activities. A strong 12th House never means that you will necessarily undergo trials, but that for instance you can witness them, which is very different. Thus, numerous heads of State are born with the Sun in the 12th House, which is useful for correcting the sometimes negative reputation of this House.

Among the professions matching a loaded 12th House, it is possible to find for example hospital or penitentiary manager, ambulance driver, first-aid worker, physiotherapist,

employee in a care or charitable institution, church worker, member of a secret or esoteric society, sailorman, and also, in general, all jobs requiring behind the scenes work: adviser to political leaders or to CEOs, eminence grise, expert in strategy, figurehead, ghost writer, etc.

## The daily atmosphere at work

### The nature of your daily work

The analysis of the sign in which the 6th House is found reveals a lot about the nature of your daily work. Whereas the Midheaven and the 10th House represent your vocation, your career, and your visible social status, the 6th House relates to your routine activities when you perform your job. It describes the atmosphere at the workplace, the relationships with your colleagues as well as with your clients or your suppliers.

The 6th House is about duties. It tells how you deal with constraints or limitations, if they affect your ambitions, or if you fit into the mould without difficulty.

It is necessary to keep in mind that this House is slightly less important than the 10th House, which is about professional ambition. Indeed, in the tradition, astrologers do not give extra weight to planets posited there, whereas planets conjunct the MC are often included in the dominants of the whole chart.

Despite all this, the analysis of this part of the chart remains unavoidable in the career portrait, for it describes your usual daily activities. The concept of "day to day" activity is of the utmost importance here.

### The 6th House in Aquarius

Donald, you need a great deal of freedom to carry through your daily tasks. You definitely prefer to take the risk of working with an independent status, provided you can organise your work as you like. You feel comfortable in political or community circles focusing on the general interest.

You try to tie up with avant-garde people who enable you to innovate even in the most trivial details. Your work setting reflects your fondness for new technologies. Your colleagues request your cooperation, both to get some assistance, and simply because they enjoy your aura.

You are quite kind and obliging. Your original and bold initiatives are usually much appreciated by your colleagues.

### The way you experience your professional duties

We still have to check whether you have planets in this House, similarly to what we have done for the 10th House.



Donald, you have no planet in the 6th House. Therefore, no particular or additional information can be provided on what has been described above (in the paragraph about the 6th House).

## The money earned through your work

"The labourer is worth his hire". Regardless of your field of activity – free-lance job, employee, labourer, civil servant, artist, etc. – remuneration is a key factor. To understand the way you approach this topic, we shall focus on the planet ruling the 2nd House, i.e. the money you earn, since its influence may speak volumes about your capacity to turn your efforts into hard cash. In some cases, it confirms or invalidates the first texts of analysis of the career.

### Mercury is the ruler

Donald, the ruler of the 2nd House of the chart is Mercury. He endows you with a flair for money as a means to express your values or to communicate. You instinctively guess that remuneration is a key element of your social and professional life, and you cleverly negotiate your working conditions. Although you are not the most materialistic sign of the zodiac, you are aware that you cannot live on love alone. Pragmatic, quick, and having a head for business, you always manage to get back on your feet when it comes to reaping the fruits of your efforts or of your ideas.

### The ruler of the 2nd House is in the 11th House

Donald, the ruler of your 2nd House is in the 11th House. Associative circles, encounters, humanitarian matters, and projects may be good sources of income. If you link up with a group, you can make a better living than if you go it alone.

## Your integration and career development capacities

We are now assessing Jupiter's position in your natal chart, which indicates how you become socially integrated.

Jupiter expresses your need or your capacity to cooperate with other people.

He also symbolises the law and the ability to adapt to rules, which is always helpful as we analyse how your vocation could fit in a society project.

Moreover, Jupiter describes the way you organise yourself, your learning potential, and your aptitude for leading a group.

This lucky planet is related to honours, to the development of your professional activity, and to the improvement of your social status.

## Jupiter in the 2nd House

Donald, in your chart, Jupiter is in the 2nd House. Here is a position which suggests great ambitions in the financial and material areas, as well as some degree of good luck. To you, social improvement must translate into a big fat pay cheque. You spare no effort in order to get a nice social status.

A report on career must examine whether there is a link between Jupiter and Saturn. The former enlarges personal horizons so as to become integrated in a group and to lead it, while the latter describes the context and the rules to be followed. Both planets form a pair, the aspects of which, if any, strongly impact the way you behave in the social and professional sphere. A possible aspect between these planets provides clues to your capacity to improve your career and to adapt to society.

## Jupiter est en square avec Saturne

Donald, in your chart, Jupiter is in harsh aspect with Saturn. Throughout your professional life, you may undergo a few hindrances limiting your will to further your career. Social and professional integration may not occur as easily and rapidly as you hope. You may definitely achieve your ambitions and experience success, but you will have to make compromises and to remain self-confident despite pitfalls.

## Predispositions which may have an influence

As this report is drawing to a close, we offer additional precisions to the professional tendencies described above, and we analyse the distribution of the planets in your chart, based on elements, modes, and quadrants.

Signs are distributed among four elements: Fire, Earth, Air, and Water. Therefore, each chart displays different proportions of them and reveals specific dispositions.

The way planets are posited in the chart divided into four equal geometrical parts must be considered: it is the distribution in quadrants.

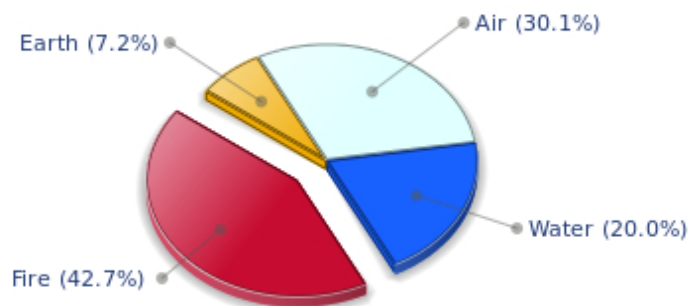
Then, in a third step, we examine the planets' position in modes: cardinal, fixed, and mutable. By analogy, they refer to a period of the season: cardinal for the beginning, fixed for the middle, and mutable for the end.

By looking at the place where the majority of planets are, we get extra pieces of information which complete the report on your career, based mainly on psychological inclinations. This predisposition is synonymous with deep preference, and not with determinism.

## Your dominant element is the Fire

This is the diagram drawn from the distribution of the ten main planets of your chart, according to the elements:

## Your Four Elements



Donald, in your chart, the Fire element, corresponding to the signs of Aries, Leo, and Sagittarius, is the most important one. With a dynamic temperament, you are very intuitive and enthusiastic. You have – or not – a passion for a work. If you do not, do not insist, you will not be able to go against your nature and do something which you do not enjoy. You may lack perspective or behave too boldly in your undertakings. Conversely, your faith can move mountains.

### Your most represented quadrant is the South-East

Here is now the distribution of your quadrants, drawn from the analysis of the importance of the planets and the angles of your chart:

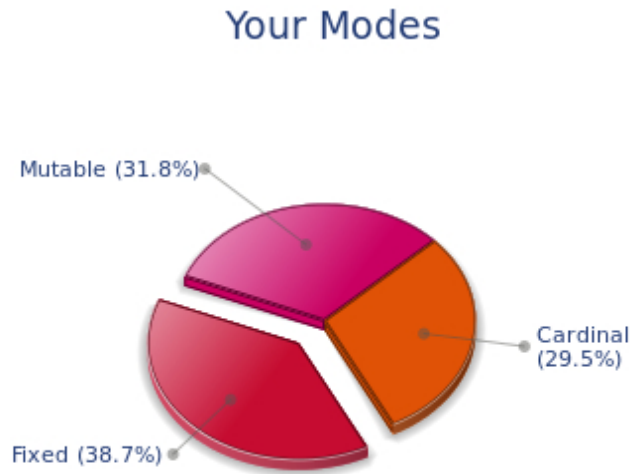
## Your Four Quadrants



Donald, in your chart, the South-East quadrant, represented by the 10th, the 11th, and the 12th Houses, is prevailing. You are eager to turn your dreams into reality. You achieve your ambitions as soon as possible, whether it is through a developed social life, an overly busy life with friends, or a fierce need to take action in order to reap the fruits of your natural dynamism – in people's eyes, of course. It is not rare that spiritual or humanitarian matters are among the subjects you are motivated by, be it at the price of some isolation, deliberate or not.

## The mode fixed is dominant in your chart

Here is now the diagram of your modes, based on the analysis of the planets and the angles of your chart:



Donald, in your chart, the Fixed mode is preponderant. When you devote yourself to a mission, you complete it successfully. It is out of the question to give up at the first problem encountered. You know how to face your responsibilities. You are tenacious, loyal and persevering. On the other hand, you are opposed to changes, a principle which is contrary to your natural functioning, which expects everything to be immutable.

## Conclusion

The purpose of this report on your professional choices is to suggest tracks to explore. Of course, it has limits, even though, compared to other disciplines, astrology enables to unveil important secrets. It contributes in particular to confirm a diagnosis made by specialists in vocational guidance.

It is impossible to guess your occupation or to foresee that which you may choose, because, for instance, no astrological report can take into account your social environment or your training level. Nevertheless, highlighting the abilities and the tastes reflected in your natal chart can steer you towards the type or types of career which may suit you best, which is already a lot.

We hope that thus you have a clear idea of the kind of activities for which your motivation is the strongest.

Today more than ever, the range of professions is very wide, and new branches emerge each day. People also change direction more often throughout life.

We advise you to reread or to ponder over this analysis, which remains valid during your whole life, since it describes your skills at the potential level.

Also bear in mind that planetary transits indicated in our predictive reports sometimes provide the trigger necessary to embark on an activity at a given period – or to follow a different route – thus turning your potential into a real professional experience.