

**Charles III's  
Astrological Portrait**





## Charles III's Astrological Portrait



<b>Introduction</b>	<b>2</b>
<b>Your Planets, Houses, Aspects, and Natal Chart</b>	<b>4</b>
<b>Preamble</b>	<b>7</b>
<b>Your Planetary Repartitions</b>	<b>8</b>
<b>Your Dominant Modes and Elements</b>	<b>9</b>
<b>Your Dominants: Planets, Signs and Houses</b>	<b>10</b>
<b>Your Style, Behaviour, and Peculiarities</b>	<b>14</b>
<b>Your Sensitivity</b>	<b>18</b>
<b>Your Affectivity</b>	<b>19</b>
<b>The Way You Take Action and Your Sexuality</b>	<b>20</b>
<b>Your Intellect and Your Communication Style</b>	<b>21</b>
<b>Your Goals, Motivations, Career, and Destiny</b>	<b>23</b>
<b>Your Assets and Your Part of Joviality</b>	<b>25</b>
<b>Your Serious Side</b>	<b>26</b>
<b>A Few Special Points</b>	<b>26</b>
<b>Your Isolated Planets</b>	<b>27</b>
<b>Annex 1: Your Minor Dominants</b>	<b>29</b>
<b>Annex 2: Karmic Study</b>	<b>33</b>
<b>Conclusion</b>	<b>35</b>



# Charles III's Astrological Portrait

## Introduction

To fully benefit from this portrait, we suggest that you read its introduction and its preamble carefully, and then that to take the time to soak up the interpretations of each chapter. Given the large number of texts, which mirrors the human being's complexity, you may need to go through the contents several times, so as to get a good grasp of their meaning and to know yourself better. This will reward your patience.

The purpose of this report is to describe your psychological portrait and to highlight the most fundamental features on the personal area. The report begins with the analysis of your planetary dominants and outlines your personality's general traits before going into further detail. Minor dominants are analysed at the end of Annex 1, for purposes of clarity. Your report then delineates the various facets of your personality:

In general, even when relationships are not involved, we express ourselves and we feel according to our character and our personal motivations: this is indicated by the Ascendant and the Sun sign which both give details on the way we function. They shed a tremendously important light which allows to figure out your personality. Here, we describe your Sun sign (your inner self), your Ascendant (your behaviour as seen by others), and the ruler of the Ascendant (interesting additional pieces of information about the style of your personality). These descriptions alone cover nearly a third or a half of your psychological signature, depending on your natal chart characteristics.

Then, we address your sensitivity, or in other words, the way you receive things and how you express your emotions ; it works as a constant filter for all your exchanges, even when it becomes a more secondary element in your amorous relationship, because at that moment, affectivity prevails. Sensitivity is the way you perceive things, it is your radar, your daily mood, and at the same time, it indicates how you react to your entourage, on a daily basis. It is what others immediately see of you. In the second paragraph, we explain in which areas of life your sensitivity and your emotions are strongest, therefore, where you are most vulnerable.

After this, it is your affectivity, the way you love and how you charm, that comes into play as soon as you fall in love: the first part indicates its basic structure or its main form. The second part describes the areas where it is best expressed and how you display it, according to your personality.

A third fundamental area deals with your mode of action and your sexuality: how you behave, how you manage to obtain what you want, what kind of desires you have. There are twelve possibilities, very

different from one another. The study discloses the specific one that applies to you. In the second paragraph, we explain in which life areas you may most efficiently take advantage of your capacity for action and for conquest.

Your ways of communicating and of thinking are obviously among the major elements that must be integrated into the delineation and the description of your personality. Indeed, they influence your general behaviour and may modify or enhance the image your project (for instance, extraversion may “compensate” a weak affectivity, but a huge number of cases are possible). An additional chapter indicates the favourite areas where you enjoy communicating, thinking and meeting with people.

Besides, we analyze an even more personal aspect that is important to define and understand what may occur within your couple: each of us have a centre of interest, a privileged manner to be fulfilled or to achieve our destiny; this main motivation is indicated by the positions of your Sun and your chart ruler in the astrological houses and we provide you with its detailed description.

A natal chart contains the potential for specific fulfilment and a whole range of assets, protections and qualities. How does the lucky factor manifest in your personality? In which area can you best exploit your qualities? The answers are precisely revealed to you in this chapter.

On the other hand, we all feel in us a part of vulnerability, doubts and fears. How does this part of solemnity or serious side play out? How is it possible to handle it in order to evolve and to get rid of useless elements? All this information is provided to you in these two paragraphs.

Then, you can discover three additional traits of your personality that must be considered as secondary ones. They deal with your predispositions, which means that they need to be triggered by external events because they are not influenced by your will; let's call it a part of fate. Please, bear in mind that your destiny can unfold only in accordance with what you are: therefore, even if they belong to your more unconscious self, these characteristics are parts of you, definitely.

The karmic chart complements the psychological portrait or natal chart. It is based on the positions of the Lunar Nodes, the Black Moon, and the Part of Fortune. These elements of the chart, sometimes referred to as fictitious points, provide information about the spiritual meaning of your destiny. Owing to the fact that we all have in us acquired knowledge and the urge to go on a quest, our life is an evolutionary journey... However, these texts must be read with great caution: this is the reason why you will find this analysis in the Annex 2 of your report.

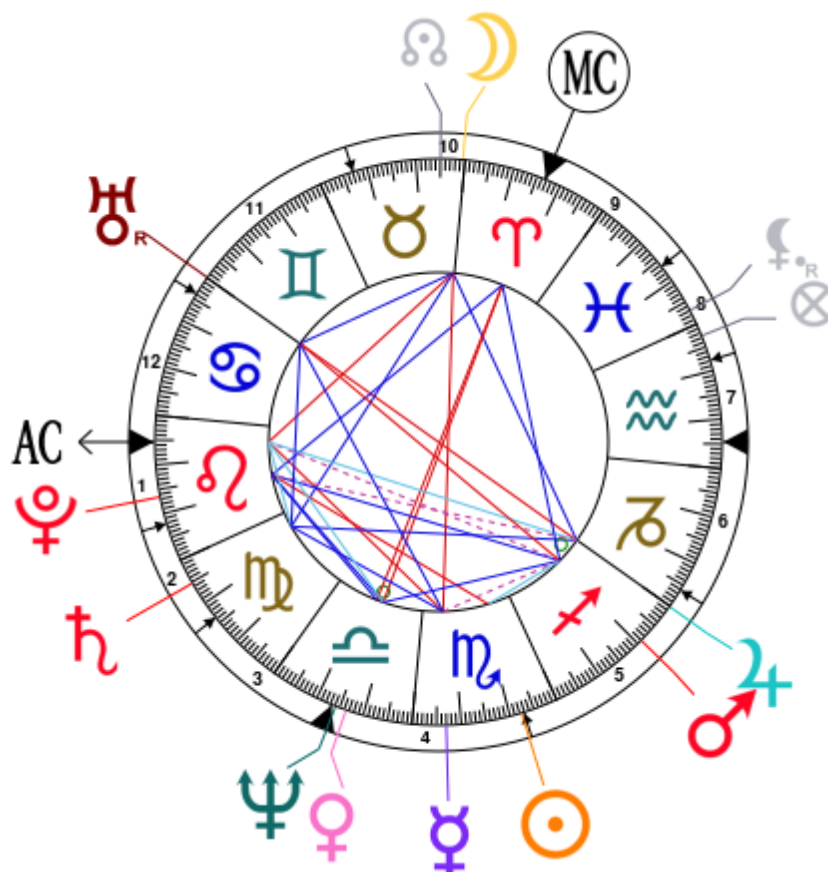


# Your Planets, Houses, Aspects, and Natal Chart

Charles III, born November 14, 1948, at 09:14 PM, Londres > London (Middlesex), United Kingdom  
 [0.10W ; 51.30N ; 0W00]

Natal Planets				In House	Natal Houses (Placidus)		
☉ Sun	22°25'	♏	Scorpio	House 5	House 1	5°23'	♌ Leo
☾ Moon	0°26'	♉	Taurus	House 10	House 2	22°09'	♌ Leo
☿ Mercury	6°57'	♏	Scorpio	House 4	House 3	13°38'	♍ Virgo
♀ Venus	16°23'	♎	Libra	House 4	House 4	13°16'	♎ Libra
♂ Mars	20°57'	♐	Sagittarius	House 5	House 5	22°54'	♏ Scorpio
♃ Jupiter	29°53'	♐	Sagittarius	House 5	House 6	3°50'	♑ Capricorn
♄ Saturn	5°16'	♍	Virgo	House 2	House 7	5°23'	♒ Aquarius
♅ Uranus	29°56' R	♊	Gemini	House 11	House 8	22°09'	♒ Aquarius
♆ Neptune	14°08'	♎	Libra	House 4	House 9	13°38'	♓ Pisces
♇ Pluto	16°34'	♌	Leo	House 1	House 10	13°16'	♈ Aries
♁ Node	4°58'	♉	Taurus	House 10	House 11	22°54'	♉ Taurus
♁ Lilith	3°03' R	♓	Pisces	House 8	House 12	3°50'	♋ Cancer
AS AS	5°23'	♌	Leo				
MC MC	13°16'	♈	Aries				

In keeping with the common practice, we consider that a planet posited within 1 degree of the next house belongs to that house. We allow an orb of 2 degrees for the ASC and the MC.



## List of Your Active Planetary Aspects

Please find below the list of all the active inter-aspects which are interpreted in this report, in addition to your planets in sign, in house, and all your planetary dominants. Since the aspects between slow-moving planets are of a collective nature, they are not displayed, in compliance with our interpretation rules.

- ★★★★★ Sun semi-sextile Mars, orb -1° 28'
- ★★★★★ Sun square Pluto, orb 5° 51'
- ★★★☆☆ Moon opposite Mercury, orb -6° 31'
- ★★★★★ Moon trine Jupiter, orb 0° 32'
- ★★★★★ Moon trine Saturn, orb 4° 5'
- ★★★★★ Moon sextile Uranus, orb -0° 3'
- ★★★☆☆ Moon square Ascendant, orb 4° 57'
- ★★★☆☆ Mercury semi-square Mars, orb -1'
- ★★★★★ Mercury sextile Saturn, orb 1° 41'
- ★★★★★ Mercury trine Uranus, orb 7° 01'
- ★★★☆☆ Mercury square Ascendant, orb 1° 34'
- ★★★★★ Venus sextile Mars, orb 4° 33'
- ★★★★★ Venus conjunction Neptune, orb 2° 15'
- ★★★★★ Venus sextile Pluto, orb -0° 1'
- ★★★★★ Venus quintile Ascendant, orb -1'
- ★★★★★ Venus opposite Midheaven, orb -3° 06'
- ★★★★★ Mars conjunction Jupiter, orb 8° 56'
- ★★★☆☆ Mars opposite Uranus, orb -8° 58'
- ★★★★★ Mars trine Pluto, orb 4° 23'
- ★★★☆☆ Mars sesqui-quadrate Ascendant, orb 0° 33'
- ★★★★★ Mars trine Midheaven, orb -7° 4'
- ★★★★★ Jupiter trine Saturn, orb -5° 22'
- ★★★★★ Jupiter bi-quintile Ascendant, orb 0° 29'
- ★★★★★ Saturn semi-sextile Ascendant, orb -0° 07'
- ★★★★★ Neptune opposite Midheaven, orb -0° 51'
- ★★★★★ Pluto trine Midheaven, orb 3° 17'

## Meaning of Stars

Stars indicate the strength of the aspects. Two solid coloured stars (there are half-stars also), mean that the aspect is powerful enough to be noticed at the first reading.

We strongly advise that you read the paragraphs displaying less than two stars later on, after you have absorbed the full import of the other texts.

The yellow colour indicates a soothing and conciliating aspect, and the red colour, a dynamic and tense aspect. The red aspects enable you to evolve, to take action, and to learn to turn your "weaknesses" into

assets through your life experiences. The yellow aspects are innate strengths on which you rely in order to grow better with the former...

## Preamble

When interpreting a natal chart, the best method is to start gradually from general features to specific ones. Thus, there is usually a plan to be followed, from the overall analysis of the chart and its structure, to the description of its different character traits.

In the first part, an overall analysis of the chart enables us to figure out the personality's main features and to emphasize several points that are confirmed or not in the detailed analysis: in any case, those general traits are taken into account. Human personality is an infinitely intricate entity and describing it is a complex task. Claiming to rapidly summarize it is illusory, although it does not mean that it is an impossible challenge. It is essential to read a natal chart several times in order to absorb all its different meanings and to grasp all this complexity. But the exercise is worthwhile.

In brief, a natal chart is composed of ten planets: two luminaries, the Sun and the Moon, three fast-moving or individual planets, Mercury, Venus and Mars, two slow-moving planets, Jupiter and Saturn, and three very slow-moving planets, Uranus, Neptune and Pluto. Additional secondary elements are: the Lunar Nodes, the Dark Moon or Lilith, Chiron and other minor objects. They are all posited on the Zodiac wheel consisting of twelve signs, from Aries to Pisces, and divided into twelve astrological houses.

The first step is to evaluate the importance of each planet. This is what we call identifying the dominant planets. This process obeys rules that depend on the astrologer's sensitivity and experience but it also has precise and steady bases: thus, we can take into account the parameters of a planet's activity (the number of active aspects a planet forms, the importance of each aspect according to its nature and its exactness), angularity parameters; (proximity to the four angles, Ascendant, Midheaven, Descendant and Imum Coeli or Nadir, all of them being evaluated numerically, according to the kind of angle and the planet-angle distance) and quality parameters (rulership, exaltation, exile and fall). Finally, other criteria such as the rulership of the Ascendant and the Midheaven etc. are important.

These different criteria allow a planet to be highlighted and lead to useful conclusions when interpreting the chart.

The overall chart analysis begins with the observation of three sorts of planetary distributions in the chart: Eastern or Western hemisphere, Northern or Southern hemisphere, and quadrants (North-eastern, North-western, South-eastern and South-western). These three distributions give a general tone in terms of introversion and extraversion, willpower, sociability, and behavioural predispositions.

Then, there are three additional distributions: elements (called triplicity since there are three groups of signs for each one) - Fire, Air, Earth and Water - corresponding to a character typology, modality (or quadruplicity with four groups of signs for each one) - Cardinal, Fixed and Mutable - and polarity (Yin and Yang).

There are three types of dominants: dominant planets, dominant signs and dominant houses. The novice thinks astrology means only "to be Aries" or sometimes, for example, "to be Aries Ascendant Virgo". It is actually far more complex. Although the Sun and the Ascendant alone may reveal a large part of the character - approximately a third or a half of your psychological signature, a person is neither "just the Sun" (called the sign) nor just "the first house" (the Ascendant). Thus, a particular planet's influence



may be significantly increased; a particular sign or house may contain a group of planets that will bring nuances and sometimes weaken the role of the Ascendant, of the Sun sign etc.

Lastly, there are two other criteria: accentuations (angular, succedent and cadent) which are a classification of astrological houses and types of decanates that are occupied (each sign is divided into three decanates of ten degrees each). They provide some additional informations.

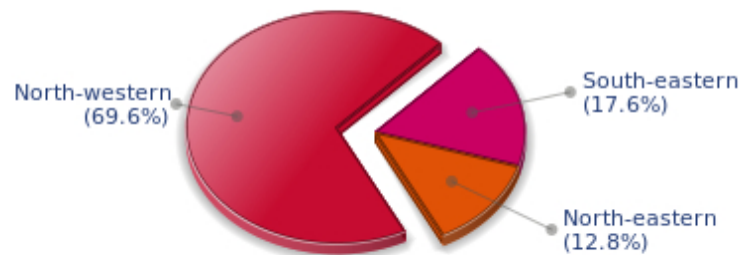
These general character traits must not be taken literally; they are, somehow, preparing for the chart reading. They allow to understand the second part of the analysis, which is more detailed and precise. It focuses on every area of the personality and provides a synthesis of all the above-mentioned parameters according to sound hierarchical rules.

As explained in the introduction of your Psychological Portrait report, minor dominants are analysed at the end of Annex 1, for purposes of clarity.

## Your Planetary Repartitions

Each quadrant is a combination of the four hemispheres of your birth chart and relates to a character typology. The Southern hemisphere – the top of your chart, around the Midheaven – is associated with extraversion, action, and public life, whereas the Northern hemisphere prompts to introversion, reflexion, and private life. The Eastern hemisphere – the left part, around the Ascendant – is linked to your ego and your willpower, whereas the Western hemisphere indicates how other people influence you, and how flexible you are when you make a decision.

### Your Four Quadrants

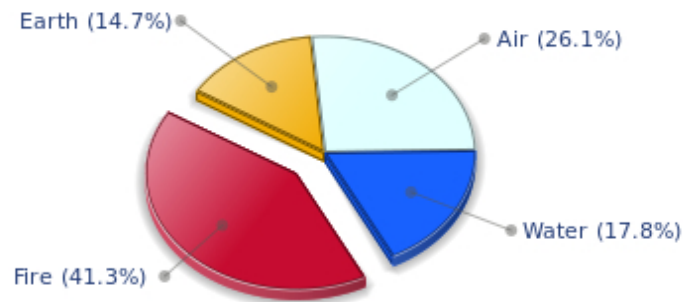


Charles III, the nocturnal North-western quadrant, consisting of the 4th, 5th and 6th houses, prevails in your chart: this sector favours creativity, conception and some sort of specialization or training, with helpfulness and relations as strong components. You need others' cooperation in order to work properly, although you are not very expansive: creating, innovating and thinking are what matter most to you because this self-expression enriches you and totally satisfies you.

## Your Dominant Modes and Elements

Charles III, here are the graphs of your Elements and Modes, based on planets' position and angles in the twelve signs:

### Your Four Elements



Charles III, Fire is dominant in your natal chart and endows you with intuition, energy, courage, self-confidence, and enthusiasm! You are inclined to be passionate, you assert your willpower, you move forward, and come hell or high water, you achieve your dreams and your goals. The relative weakness of this element is the difficulty to step back or a kind of boldness that may prompt you to do foolish things.

Cheers for communication and mobility, Charles III! The predominance of Air signs in your chart favours and amplifies your taste for relations and for all kinds of short trips, whether real (travels) or symbolic (new ideas, mind speculations). You gain in flexibility and adaptability what you lose in self-assertion or in pragmatism.

The twelve zodiacal signs are split up into three groups or modes, called quadruplicities, a learned word meaning only that these three groups include four signs. The Cardinal, Fixed and Mutable modes are more or less represented in your natal chart, depending on planets' positions and importance, and on angles in the twelve signs.

## Your Modes



The Fixed mode corresponds to a majority of elements in your chart, Charles III, and represents the desire for security and durability: you are able to concretely appreciate a situation and its stability. You definitely prefer to play the role of a loyal, obstinate and hard-working person, rather than to try new and risky experiences - beware, however, not to confuse obstinacy with intransigence. You structure, cement, and strengthen everything you find on your way: it is your nature, although you are not especially interested in swiftness: slow and steady...

## Your Dominants: Planets, Signs and Houses

The issue of dominant planets has existed since the mists of time in astrology: how nice it would be if a person could be described with a few words and one or several planets that would represent their character, without having to analyse such elements as rulerships, angularities, houses, etc!

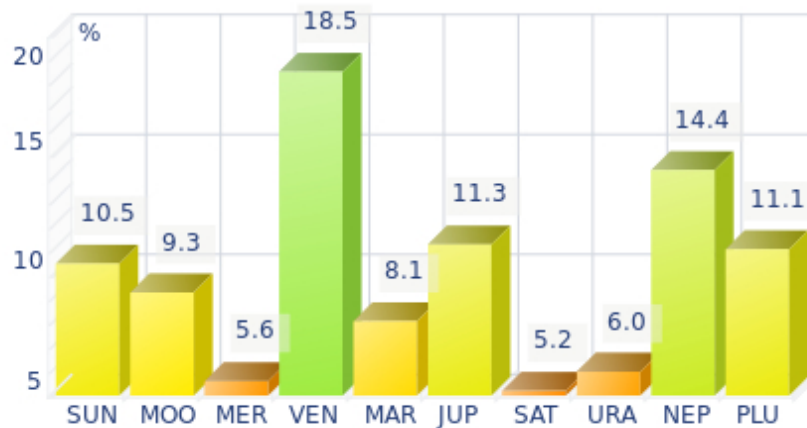
The ten planets - the Sun throughout Pluto - are a bit like ten characters in a role-play, each one has its own personality, its own way of acting, its own strengths and weaknesses. They actually represent a classification into ten distinct personalities, and astrologers have always tried to associate one or several dominant planets to a natal chart as well as dominant signs and houses.

Indeed, it is quite the same situation with signs and houses. If planets symbolize characters, signs represent hues - the mental, emotional and physical structures of an individual. The sign in which a planet is posited is like a character whose features are modified according to the place where he lives. In a chart, there are usually one, two or three highlighted signs that allow to rapidly describe its owner.

Regarding astrological houses, the principle is even simpler: the twelve houses correspond to twelve fields of life, and planets tenanted any given house increase that house's importance and highlight all relevant life departments: it may be marriage, work, friendship etc.

Charles III, here is the evaluation diagramme for your planets:

## Your Dominant Planets



The three planets that are most highlighted in your chart are Venus, Neptune and Jupiter.

With Venus among your dominant planets, one of your first reflexes is... to please! Your look, your charm, and your seduction are omnipresent elements in your behaviour.

Your approach to things is connected to your heart, and for you, no real communication can flow if your interlocutors exude no sympathy or warmth. Cold and logical reasoning, clear thoughts and good sense are not important to you: if there is no affective bond with your environment, no connection can be established with the Venusian that you are, and nothing happens.

You have a strong artistic side, and you never neglect subjective but clear concepts such as pleasure, beauty, and also sensuality. However, sometimes to the detriment of efficiency, durability, logic, and... detachment.

With Neptune as one of your three dominant planets, you are a secretive and ambiguous person, often confused or unclear about your own motivations! Indeed, you are endowed with unlimited imagination and inspiration, as well as with an extreme sensibility that may turn you into a psychic or a clairvoyant. On the other hand, your impressionability is such that you may have difficulties in separating what is concrete and solid from illusions or dreams.

A mystic, a visionary or a poet, you daydream, like any Neptunian, and you see what few people only can see, all of this being shrouded in aesthetic mists when you are fired with enthusiasm.

A boundless, infinity-loving man like you is inevitably likely to be more vulnerable and easily hurt because of your acute perception of events. In such cases, you are hit full in the face, and you may sink into gloomy daydreamings and dark melancholy.

That said, this mysterious aura definitely gives you an indefinable charm in the eyes of your close friends who are often fascinated by your unique ability to feel and to see what ordinary people can never see!

Jupiter, the planet of expansion, organization, power and benevolence, is quite emphasized in your chart. Like any Jupiterian, you are warm, open, sociable, consensual, active and optimistic. You can use your

self-confidence to erase differences of opinion, and you leave the task of analyzing and perfecting things to specialists. Your role, and you know it since you were young, is to gather, to demonstrate your synthesizing and conciliatory mind, and to naturally reap its fruits - power.

You appreciate legality, social order but also order in general. With you as a leader, every plan or human entity can be organized and structured. You excel at supervising. The Jupiterian type is indeed the politician par excellence, and a positive Jupiter in your chart is synonymous with good integration into society, whatever the chosen path.

Is this idyllic picture really perfect? Certainly not: each planet's typology has its own weaknesses. One of yours is pride, like the Solarian, but your will of expansion at all costs may generate a form of exaggeration in everything, endless pleasure, inappropriate self-confidence that could lead you to rough materialism and the thirst for absurd material comfort - in the worst cases, of course.

### Your Dominant Signs



In your natal chart, the three most important signs, delineated according to the above-mentioned criteria, are, in decreasing order of strength, Libra, Leo and Scorpio. They are often prominent because your Ascendant and your Sun are posited there. However, it is not always the case: it may be because they are occupied by a cluster of planets, by a planet near an angle other than the Midheaven and the Ascendant, or because two or three planets are very active and form numerous aspects from these signs. Therefore, you partly take on the three signs' characteristics, which are somehow superimposed on your natal chart, and all the more so if any of the signs in question is highlighted.

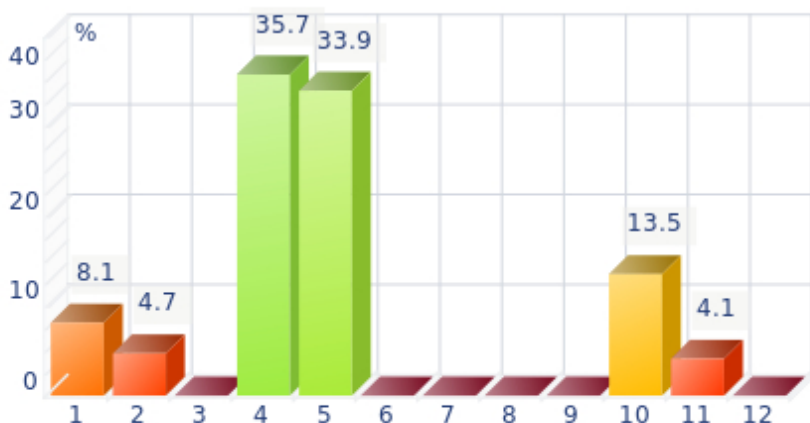
With Libra as a dominant sign in your natal chart, you love to please, to charm, and to be likeable. Moreover, you are naturally inclined towards tolerance and moderation, as well as elegance and tact, as if you were meant to please! Of course, you always find malcontents who criticize your lack of authenticity or of courage and your half-heartedness, but your aim is to be liked, and in this field, you are an unrivalled champion!

With Leo as a dominant sign, you naturally shine brightly. Your dignity, your sense of honour, and your generosity can almost turn you into a solar mythological hero, a knight or a lord from the ancient times. People may blame you for your selfishness, your pride or your somewhat loud authority, but if you are self-confident, kind-hearted and strong-willed, it surely makes up for your little flaws, as long as they remain moderate...



With Scorpio as a dominant sign, you are a strong and astute person, complicated and passionate, sometimes destructive and intolerant, but strong-willed, tough and daring, sometimes bordering on aggressive. So many qualities and dangers combined in one person! Obviously, this often results in a natural selection of people around you: those who stand up to you or admire you and those who can't bear you anymore! But that is precisely what you want. You are what you are and you are not going to transform yourself just to please. You are too proud and you never dread confrontations, although your way of fighting is secret, like your nature that, mysteriously enough, you are so reluctant to reveal even to your close friends who will never understand you. That said... what a hellish charm you have!

### Your Dominant Houses



Houses 4, 5 and 10 are the most tenanted ones in your natal chart. To compute their strength, planets and angles are weighed according to various astrological criteria such as swiftness, activity, angularity, rulership etc. From the analysis of the most tenanted Houses, the Astrologer deduces the fields of activity that are most relevant to you, be it because of what you are experiencing, or what you may experience in the future, or because of your deep inner motivations.

With an important 4th house in your chart, your private life, your intimacy, as well as your family and home, play a fundamental role. Your security and your family unit, the one you come from, but also the one you set up when you get married and start a family - or even as a bachelor living alone in your sweet home - are necessary for you to blossom. According to the Tradition, your father may play an important role in your life.

The 5th house is one of your dominant houses: hobbies, love life, sports, and games, including speculation and all kinds of entertainment, are fields that you actually take seriously! On a more subtle level, artistic creation as well as other forms of creation - including begetting children - could be one of your assets. You gain from taking part in leisure associations and various activity clubs in which a catchword resounds more than for most people: pleasure.

With a prominent 10th house, your destiny's achievement may be very notable: the 10th house represents your career, your public life, and your ambitions. A good deal of your energy may thus be used to successfully implement what you have in mind. Instinctively, you are very keen to make your dreams come true. Sooner or later, you will deal with the public, and your personal achievement will go through trials and ordeals: other people and visible actions.

## Your Style, Behaviour, and Peculiarities

What is commonly known as "sign" indicates the position of the Sun in the Zodiac. The Sun highlights all the characteristics of the sign he tenants. According to astrology traditional rules, these characteristics are all the more pure and exact when the Sun is strong in the sign, or when the sign is particularly highlighted within the chart. Here, we indicate the pure characteristics of the sign but you must bear in mind that they may only shed a light on a particular aspect of your personality. Indeed, the sole sign of the Sun, or of the Ascendant, can never describe an astrological chart because it depends on the degree of strength of the said sign in your chart.

Another important point must be underlined. Contrary to the Ascendant, which clearly describes your appearance, your vitality, your physical constitution, your spontaneous behaviour and the image you project, your Sun sign describes your inner self, which you may not completely be aware of, and which may emerge gradually as you mature: it is about your inner personality that you reveal only to the members of your entourage whom you trust. The Sun sign is likely to be the final form of your personality, once it has evolved in line with the energies of the other parts of your chart, the beginning of which is seen in the Ascendant, your external "bark".

The Ascendant is one of the major components of your natal chart. It is the zodiacal sign that rises in the East at the very moment of your birth. To calculate it, it is therefore necessary to know your exact time of birth.

It provides with a wealth of information on your personality. It is one of the key features that allows the analysis of several parts of you, such as your appearance, your character as it is initially perceived and your immediate behaviour. It describes the external aspect of your personality which you always display, but it also describes your physical constitution in the long-term, in other words, your health.

Please be aware that, in spite of the importance of the Ascendant, the accuracy of its description depends on how strongly highlighted it is in your natal chart. We use the entire set of astrological rules to assess the strength of the Ascendant. In most cases, the Ascendant is as revealing as your "sign", i.e., the sign where the Sun is posited at the time of birth.

## You were born under the sign of Scorpio and your Ascendant is in Leo

Before broaching the details of the meaning of your Sun and your Ascendant, as a preamble, we offer a brief generic interpretation of their combination in your chart:

These two signs share the same uncompromising integrity, and they blend together to give you a powerful personality. Nevertheless, Leo's brilliant and warm look contrasts with your Scorpio core, which is entirely made of mysteries and ambiguities. You want to impress and to receive the praises you need to calm down your anxious mind. You are quite inflexible and righteous, and you seldom adopt a conciliatory stand when you do not appreciate a situation or an interlocutor. In the best cases, your Leo Ascendant prefers to display some amount of dignity and magnanimity because this is your first reflex whenever you face new circumstances. Your Scorpio inner self reveals to your close friends and relatives only the passionate but tetchy nature which lies within. You are possessive and you endlessly question everything and everyone, including yourself. You strive to excel yourself or you enjoy flirting with danger

because this is what makes you feel more intensely alive. Although you display a cheerful and pompous facade, you feel that your secretive and tortured inner self is quite repulsive. All in all, light and darkness gathered within the same person...

### **You were born with the Sun in Scorpio**

Psychologically speaking, your nature is bilious, with aggressive impulses that lead you towards the transformation of your entire being and, continuously, of the situation surrounding you. You seem to be constantly struggling for your self-assertion. You cannot refrain from testing others with cutting remarks, not because you want to hurt them, but because you want to know them better through their reaction; for you, life and the feeling of aliveness are experienced through rebellion and tension. You may be manipulative and your aggressive attitude may equate with sly inquisition. You often remain silent, introverted and secretive, mulling over turbulent thoughts in the depths of your mind, leaving others puzzled by your somewhat peculiar behaviour.

As you are born under this sign, you are secretive, powerful, domineering, enduring, intuitive, assertive, charismatic, magnetic, wilful, daring, clear-sighted, passionate, creative, independent, vigorous, generous, loyal, hard-working, persevering, indomitable, possessive, shrewd, stubborn, ambitious, instinctive, tenacious, sexual, sexy, proud, intense and competitive. But you may also be aggressive, destructive, stubborn, anxious, tyrannical, perverse, sadistic, violent, self-centered, complex, critical, cruel, nasty, jealous, calculating, vulnerable and dissembling.

In love, Sir, you are very magnetic, with a discreet and indefinable charm that inevitably attracts the persons you set your heart on. You detect their weaknesses so well that you can, at will, exert your powers and your manipulation tendencies over them. There are no negative consequences, as long as things go well, because you are very sensual, charming, possessive and swaggering and you make happy all the people who look for this domineering aspect in their partner. However, when things start to deteriorate, your almost pathological jealousy and your capacity to harm when you feel threatened are the causes of your partners' tears.

For you, passion means tension and tragedy. It is the price to be paid for sharing your sexuality loaded with unlimited fantasies, male ardour, loyalty and generosity. You are excessive, but very endearing, and your partner finds it very hard to leave you. It is preferable when things are fine between you.

### **Your Ascendant is in Leo**

Psychologically speaking, your nature is powerful and self-assured. You are a leader whose strength and nobleness naturally arouse your entourage's respect and adherence and your legitimacy is unquestioned. Your sense of commandment, the honour your person constantly exudes, your prestige and your charisma is a whole which puts you into the spotlight wherever you go.

As you are born under this sign, you are proud, determined, wilful, loyal, solemn, generous, ambitious, courageous, heroic, full of vitality, creative, confident, seductive, happy, daring, proud, majestic, honest, magnanimous, charismatic, responsible, noble, brilliant, radiant, dramatic, affectionate, full of humour, demonstrative, swaggering and self-confident. You can also be domineering, conceited, touchy, authoritarian, stubborn, intolerant, self-centered, irascible, violent, and nonchalant.

In love, Sir, you are very demanding. You are a powerful and loyal lover. Your partner must be the most

beautiful and the most brilliant person and she must make you feel that she admires you. In such a case, your generosity has no limit and you give your love without reservation, with nobleness, liberalities and luxury. You set up a stable and brilliant home where children have the essential part.

The main danger is that you value trust to the extent that you grant it generously but too hastily: if you happen to find out that your trust is misplaced, the whole world around you crumbles and the relationship is forever damaged. In this regard, you are cut-and-dried and you feel so hurt and humiliated that you seldom can forgive.

Another similar danger comes from the fact that your expectations are very high and it is very unlikely that real life offers such unconditional and lasting love: for this reason, it is not unusual that you never marry, all the more so because your self-centered character is not prone to self-questioning...

### **The ruler of your chart is in Scorpio**

The ruler of the Ascendant, also referred to as the chart ruler, brings a few interesting nuances to the meanings provided by the Sun and the Ascendant. The sign in which the ruler of the Ascendant is posited fine-tunes the style of personality described by the Sun and the Ascendant. It may strengthen it if the sign is identical to either of them.

In your chart, the ruler of the Ascendant is the Sun. This specific feature means that the Sun's characteristics previously delineated are strengthened.

### **Aspects to your Ascendant**

Several planets form an aspect with your Ascendant, Charles III. Therefore, in their specific way, they modify your behaviour and your personality, which do not take on the pure characteristics of your Leo Ascendant only, but which are a blend of its characteristics with those of the said aspects.

#### **★★★★☆ Mercury square Ascendant, orb 1° 34'**

Sometimes, you find it hard to behave the way you wish, Charles III. It is because of Mercury who is not really in phase with your Ascendant. You happen to dislike the way you communicate, either because you exceedingly intellectualise everything, or on the contrary, because you do not make the effort to thoroughly analyse the situation when you are with other people.

#### **★★★★☆ Moon square Ascendant, orb 4° 57'**

Sometimes, Charles III, your sensitivity clashes with the image you want to project. As a result, you may feel vulnerable and suffer if you let yourself be disheartened. Try to put things into perspective and to confront your emotions without fearing your external image. This is how you can compensate for this minor dissonance between the Moon and your Ascendant.

#### **★★★★★ Saturn semi-sextile Ascendant, orb -0° 07'**

Saturn is in soft aspect with your Ascendant, Charles III. This harmonious configuration brings about a responsible, loyal, persevering, and patient behaviour, and in a word, reliable. Your seriousness is appreciated, and owing to your capacity to easily analyse situations, you come across as a sincere and trustworthy person.

★★★★★ Mars sesqui-quadrate Ascendant, orb 0° 33'

When Mars is in dissonance with the Ascendant, Charles III, in some particular circumstances, it may translate into hastiness, and even hostility on your part, which your entourage may not understand. You have audacity galore, but it is up to you to show alertness, so that you don't come across as a short-tempered person unable of self-control.

★★★★★ Jupiter bi-quintile Ascendant, orb 0° 29'

Jupiter in soft aspect with your Ascendant naturally endows you with a reassuring, calm, and benevolent side, Charles III. You honour your commitments without qualms, and thanks to your heart of gold and your generosity, your behaviour is protective and nice. You like to please other people, and whenever it is possible, you enjoy finding compromise solutions to all problems.

★★★★★ Venus quintile Ascendant, orb -1'

Thanks to Venus, Charles III, your behaviour is in harmony with your affective life, and you need not make any special effort in order to express your feelings in a natural way and without arousing people's criticisms. This asset enhances your natural easiness and charm, which is definitely not unpleasant!



## Your Sensitivity

You love nature as much as your comfort, Charles III, you are an Epicurean willing to enjoy life's beautiful and good things within the family "clan" or with friends who value your conviviality and your kindness. You are faithful, stable, with your feet rooted in the ground and you are reliable in all circumstances. You are attached to your affective and material security. You tend to be jealous and possessive and, although your nature is quite slow, you may be short-tempered and aggressive when you feel threatened. In such cases, you display an exceptional stubbornness and fury and it becomes impossible to make you change your mind. Although you are aware that your behaviour is wrong, you stick to your line and your grudge is persistent. However, you are so sensitive to tenderness and to concrete gestures of affection that a few presents or a few caresses are enough to make you see life through rose-coloured glasses again...

Your career or professional achievements, Charles III, are fields where your emotions will be more easily channelled. You are often popular, especially with women, and you instinctively have the desire to please audiences or crowds.

Your fame is often due to your changeable side, light-hearted, emotional and moody sometimes. It also means that it is very likely that you experience professional changes several times during your life. Each time, you will contrive to be the star, in your way...

### ★★★★★ Moon trine Jupiter, orb 0° 32'

Why should one complicate one's life if it is possible to enjoy the simple joys of the present? This harmonic Moon-Jupiter aspect indicates a cheerful nature, which earns your entourage's liking and protects the balance of your intimate life. Your sociability is supported by your desire to smoothly adhere to a group, a social or family cell. You are fond of moments where you unwind and relax. You value your daily comfort and, to preserve it, you accept to play by the rules of privacy. When this aspect dictates your attitudes, you behave like a person easy to get along with... even though your personal demands, relegated to the backseat, come up again at top speed and force you to behave more in line with your inner needs.

### ★★★★★ Moon sextile Uranus, orb -0° 3'

This harmonious Moon-Uranus aspect indicates that your well being depends on the original quality of your charm and on new-ness. You are not influenced by prevailing trends and fashion. You have a personal view of what a balancing private life should be. You enjoy unexpected situations, even extravagant ones. But if you feel that your living environment hampers your freedom, you suddenly change your attitudes and your habits. Independence is your true realm. You may show an exceptional inflexibility when your intimate life moves away from the patterns you need, deep down. Your entourage must get used to your demands and to the values you are determined to keep with all your might and on which you are uncompromising. This determination does not allow for a laid-back attitude, or an indolence that so often causes degradations. You keep your own daily rhythms under control.

### ★★★★★ Moon trine Saturn, orb 4° 5'

This harmonious Moon-Saturn aspect is an element of stability for your private life. Your daily life lives up to your demands, you are totally true to yourself and logical through your very intimate behaviour. You do not choose the easy way out: on the contrary, it is in difficult situations that you are at your best. It is very unlikely that you become destabilized by trifles. This aspect indicates stability and also perfectionism. You are longing for a private life respectful of your heart of hearts and your genuine

desires. Your well being is at this price, and its quest remains perpetual. Despite your reserved private behaviour, your emotions run very deep. You have a strong need for protection and for security. Your aspirations lead you towards contemplation or studies, more than towards social futilities.

## Your Affectivity

In your chart, the Sun is in Scorpio and Venus, in Libra. Your solar and Venusian signs follow each other but they are not alike: Scorpio's continuous will to call attention on himself opposes the associative nature of Venus in Libra. Your dearest wish? To live in perfect harmony with your partner, each one being the reflection of the other, one's double. Without connivance, without closeness, how can your wish be fulfilled? You love the persons who resemble you and, as time goes by, you learn to get closer to the people to whom you give. However, in the long run, you find it hard to keep on heading in that direction. The passionate atmosphere you need may exclude the quiet situations that your heart is so crazy about. You must show your difference and your specificity. In doing so, you can provoke the offensives without which your love life would seem unbearably dull! Your clear-cut, sometimes biting attitudes add spice to the game. More than anyone, you know how to alternate moments of affective intensity with unbridled passions and with calmer hours dedicated to the enjoyment of idyllic reconciliations.

Charles III, it is impossible to hide it: to love, to be loved and to please, all these activities are at the centre of your life. Because you loathe solitude, you are constantly looking for company, and if possible, for an amorous company. It does not mean that you are full of passion all the time: you are refined, delicate and charming and you skilfully make use of customs with moderation and balance, without losing sight of your personal interests. You are ready to adjust and to compromise in all circumstances. You want to love and to remain integrated in your society: love gives precedence to propriety, which is fundamental to you. You are particularly gifted for this game of refined courtesy and politeness where appearances are at least as important as contents; you are able to show what you feel like showing and you achieve your ends with elegance, gentleness and goodness. These are precisely your main assets.

Charles III, for a fulfilling sentimental life, you need a stable and securing family basis from where you can eventually look at the outside world and give free rein to your love agitations: even though you have had a loving and caring family environment during your childhood, and you now want the same secure and warm feeling to endure, at any cost, or if, on the contrary, fate had turned your childhood into a painful period with lots of emotional loneliness and you now want to obtain, at any cost, what you had been deprived of in the past, for the rest of your entire life, the harmony of your family structures will remain an absolute necessity for you, lest you feel unable to do your utmost. As a matter of rule, you also need security in the literal sense before you can be at your best and, as you start a serious relationship, one of your first preoccupations is to purchase or to beautify the necessarily cosy and opulent-looking nest for your new couple. You value interior decoration as much as security and you will spend lots of time hunting refined artistic works that will match your inner feelings: secrete, warm, reassuring but not extravagant.

★★★★★ Venus conjunction Neptune, orb 2° 15'

Your sentimental life unfolds like a strange dream. Love is too delicate to be tamed or controlled. You follow your heart impulses in an idyllic ambiance, far from reality's ordinary constraints, far from conventions and conformism. You exude a particular charm, discreet and subtle. But your affectivity may

be disconcerting. You are very sensitive to marks of affection and tenderness, although you are aware that love cannot be bought or won. What is meant to be will be and it is impossible to know the hows and the whys behind a prevailing harmony. The obvious danger is that you may refuse to make any effort in such conditions. Living as a couple must feel natural and you do not need to objectively build the foundations of a relationship. You are an idealist and you dream of an affective paradise, which may be too good to be true...

★★★★★ Venus sextile Pluto, orb -0° 1'

You exercise exceptional clear-sightedness in love. Your passions are subtle, deep, although disconcerting and imperceptible to the outsider. You display no gullibility and you keep your distance. This is part of your charm. You detect what is really at stake in your couple's relationship and in your sentimental attitude. You drive the boat of your sensitivity without falling victim to mirages and affective traps. The only danger is that you may be too calculating. As you try to totally control love and to constantly pull the strings, you may lose the ingenuity and innocence which are necessary to nurture a relationship. You give proofs of your love in a very personal way and you never hesitate to use paradoxes to preserve the authenticity of your relations. You can anticipate problems and prevent difficulties.

★★★★★ Venus sextile Mars, orb 4° 33'

With this aspect, innate affective behaviours prevail over opportunisms and calculations. You do not cheat with feelings and you prefer to be guided by your likes ... or your dislikes. Love is neither to be reasoned upon nor to be explained. It is important to experience one's passions spontaneously and to give free rein to the heart's tumultuous manifestations as well as to the body's demands. In other words, to be one's true self in the "now". You need to live intensely, to try all kinds of situations, sometimes to get hurt. Your sensitivity is the driving force behind your decisions and your actions. Real experiences are worth the best intellectual concepts. Spurred by your thirst for emotions, you try to build your life on bases that match your desires. Here, the trap may be that you pay too much attention to your moods and affects. But without them, life would be so dull. Even though emotionalism betrays you occasionally, it remains your best ally.

## The Way You Take Action and Your Sexuality

Charles III, you are a real Goliath and you often excel in sport; your thirst for conquests prompts you to constantly launch new challenges. The enthusiasm you put in your undertakings is perfectly well supported by your moral concepts and an idealism compatible with the values of the society you live in. You are pragmatic, enterprising and sometimes, naive. You do not pay attention to details and you launch various great adventurous projects that are all doomed to success. In a few rare cases, you can funnel your huge energy into more philosophical, even spiritual or religious enterprises, where your entire fieriness works wonders. On the sexual plane, your ardour and your spontaneity are your main assets. The danger is that you may spread yourself too thin in the sense that you may forget about faithfulness, particularly during the extensive faraway travels you are so fond of.

Creativity and leisure are the best outlets for your capacity of action, Charles III. A conquest must be exempt of constraint, otherwise you cannot open up totally and unreservedly. Your energy expresses itself best in the fields you choose yourself, such as outings, personal projects, festivals, love affairs (Mars' conquering spirit...), sports, games, etc.

The Tradition also mentions children, and it is very likely that their upbringing is stern. Mars is never soft. He is hot and dry, and his efficiency in several areas of life is inevitably far from tenderness. You may be a conqueror in creativity, love and leisure, but please, be a doting father when this responsibility falls to you.

★★★★★ Mars trine Pluto, orb 4° 23'

You have a very personal way of taking action and of experiencing confrontations and struggles. The laws of the world are subtle, often with complex and hidden mechanisms. For these reasons, you prefer to act behind the scenes rather than openly. You manage your daily life in a distant and subtle fashion while you try to understand the logic underlying observed facts. You may also provoke events although you act as if you were not concerned. Your interventions will be as efficient as they are discreet. You may secretly transform your life and you live through the inexpressible motivations that connect you with the invisible realm. Things, which cannot be formulated, must be experimented and felt. You test experiences that your entourage find uninteresting and meaningless.

★★★★★ Mars conjunction Jupiter, orb 8° 56'

Coordinated action wins over almost all obstacles! You mobilize your energy and your fighting spirit advisedly and you take timely action. This is the reason why you are efficient in situations requiring courage, determination, swift responses and diplomacy, altogether. You do not fear confrontations but you never provoke them unnecessarily. You take advantage of your chances and you adjust your behaviour to concrete situations. You empirically handle events with relevance. The only danger is that you may be overzealous to seize any opportunity... even those that are not necessarily good in the long run. You should take the time to carefully consider the facts and their consequences. The swiftness of your reactions must remain an asset.

★★★★★ Mars opposite Uranus, orb -8° 58'

This Uranus-Mars dissonance indicates frequent commotions. Your actions may be foolhardy and thoughtless. You may not control your temper and you let impulsiveness take over logics. This brings about drastic, whimsical or untimely decisions. There is no monotony in your life: thunders and tyrannical behaviour are on the agenda! Your fighting spirit certainly allows you to cope with life hardships. Nevertheless, beware of damages. As one wants to act as a hero, one can make mistakes. Because forces are overestimated or because inflexibility forbids compromise solutions. Therefore, it is important to balance your decisions and to avoid solutions that are as final as inappropriate.

★★★★★ Sun semi-sextile Mars, orb -1° 28'

This planetary Sun-Mars aspect reinforces courage, determination and energy. The need for action is obvious. Whatever your will designs is implemented with fieriness, despite all oppositions. You are decisive and wilful, even foolhardy. Your behaviour may be heroic: you know how to face adversity, to stand for your rights and your decisions, regardless of the confrontations you may have to cope with. The only danger may be that you overestimate your chances and your strength. But your audacity turns out to be rewarding, more often than not.

## Your Intellect and Your Communication Style

You are the very type of the researcher endowed with great intellectual and imaginative capacities, Charles III, and your curiosity is very deep. Researches, riddles and mysteries appeal to you and with a

remarkable sixth sense and intuition, you endlessly try to unearth the truth, in all areas, like a psychoanalyst or a detective. You are a very secretive and introverted person, you find it difficult to open up and you rather prefer psychoanalysis. In spite of your clear-sightedness, you find it hard to deal with people: your critical mind, tinted with irony and causticity, may be destructive, especially since your determination and your stubbornness do not incline you to giving up. You are fond of provocations and you handle contradictions skilfully even though you may come across as dishonest.

It is usually in the private sphere that you can communicate and think for your best interests, Charles III. Your family is very important to you, and your intellectual interests incline you towards real estate matters, asset management, family business, etc.

You may also work at home, and in any case, you are generally more outgoing when you are in a safe and private environment. When you are outside, you come across as unobtrusive, either because you don't pay much attention to events that are not directly related to you, or because you are just shy and on the defensive when it comes to worldly things or public domain.

★★★★★ Mercury sextile Saturn, orb 1° 41'

Your vision of the world is rigorous and objective. An exemplary logic characterizes your mental attitude and your human relations. Your discerning faculties overlook no detail. You need to know the whys of your life and to explore the backstage of your surrounding world. The deepness of your relations dismisses superficial connections. It may be the reason why your interest is aroused when you are in touch with elements that are alien to your mode of functioning. You have the soul of a researcher, regardless of the form that your investigations may take. It may be an exacerbated curiosity for human topics or a will to understand relationship stakes. It may also be a hobby or a course of study that introduces you to a riddle. It does not matter! Life is a perpetual quest for the unknown. Your critical mind is highly developed and you take commonplaces for granted only after thorough consideration.

★★★☆☆ Moon opposite Mercury, orb -6° 31'

The Moon suggests relaxation, whereas Mercury implies a discoverer's mind. They both make sense and each one requires special attention, as they are sometimes upsetting. This Moon-Mercury aspect is likely to bring about nervousness or instability. Nervousness stems from the multiplication of the spots of interest and the perpetual restlessness of your mind, which prevents relaxation and well being from settling in. The outside world constantly appeals to your attention and you shift from one issue to another, to the detriment of your tranquillity. Therefore, it is important that you find the balance between two antinomial attitudes: letting-go versus curiosity, tranquillity versus communication. The new persons you meet with are not necessarily trustworthy and there is no certainty that the contact is harmonious. It is important that you use both influences alternately.

★★★★★ Mercury trine Uranus, orb 7° 01'

Your state of mind is innovative and turns the surrounding world into a constantly moving field of experiences. You ask relevant questions ... and you answer them. Although you are flexible when you ought to, your principles and your beliefs are unwavering. It seems difficult to catch you off your guard. You multiply observations, relationships, contacts and you never lose face: actually, your mobility hides an unshakable determination and a deep lucidity. In a split second, you are able to catch the useful information or the enriching relationship. The original and fanciful steps you take exclude monotony. Your approach to life is amazing!



#### ★★★★★ Mercury semi-square Mars, orb -1'

This Mercury-Mars dissonance brings about impulsiveness into relationships and contacts. Your sense of controversy and criticism leads to blunders and thoughtless actions. Your verbal violence may harm the efficiency of your actions. You certainly display your views without circumlocution. Your straightforwardness would be commendable if it did not cause those blunders that spoil many situations. It is important that you learn to control your decisions, to coordinate your mental abilities and your fieriness, so as to fully express the quickness of your mind and of your action. Learn to count to ten before you say anything, as it is an excellent exercise for you!

## Your Goals, Motivations, Career, and Destiny

### Your Sun is posited in the 5th House

Charles III, your main motivations and your will lead you towards activities related to creation or to the outwards expression of yourself. It may take the form of the mobilization of your energy aiming at artistic, literary or technical creations and works, innovative projects design, or symbolically, projecting yourself into your descendants: creation via procreation.....

You are usually very sociable, warm, honest and straightforward, but sometimes inflexible and you are interested in leisure under all its forms. Love pleasures, firstly, but also outings, parties, games (gambling and other amusements), and all kinds of activities containing a part of risk that can increase your adrenalin level! You loathe anything that is too solemn and too serious in general and you prefer the authenticity of the present to intellectual meditations that seem too static to you.

Your will to please is very strong and you can shine in the love area. Since the recreational world is linked to that of children, you easily deal with them. When you become a father, one of your major goals is to dedicate yourself to their success. You are able to dedicate an amazing amount of time to their education and you succeed in that field better than anyone. Besides, you have the knack with children and everyone envy you!

One never gets bored in your company and you have loads of hobbies and occupations that are out of the ordinary. You are creative and playful, to a point that may border on fanaticism. Try to avoid role-plays or casinos that take up so much of your time... Be also wary not to surround yourself with sad or austere people who may not find you serious enough!

You spend too much energy in entertainment activities and you may lose sight of your real interests. If you listen to your instinct rather than to your reason, you take the risk of missing a few dates with your own success: you must sometimes put fun aside and force yourself into solemnity, in order to become more efficient and to achieve your goals more quickly. It is also likely that you face problems within the circle of your friends.

## The ruler of your chart is in the 5th House

The ruler of the Ascendant, also referred to as the chart ruler as explained in a previous chapter, is also posited in one of the twelve Houses of the chart. Just like the Sun in his House, the ruler of the Ascendant provides certain abilities, or it makes you appreciate more keenly certain areas of life.

The ruler of your Ascendant is in the same House as your Sun. This specific feature of your chart strengthens the Sun's characteristics previously delineated.

## Aspects influencing your ambitions

Regarding your destiny or your career, the following aspects of your natal chart allow to fine-tune what has just been said above:

### ★★★★★ Neptune opposite Midheaven, orb -0° 51'

Neptune is in opposition to your Midheaven, and therefore, he is at the same time in conjunction with your Imum Coeli which symbolises your roots, your family, the home where you were born, as well as the home you set up, Charles III. Thus, this is not a dissonance strictly speaking, but a capacity of fusion with your original environment through emotion and instinct, and which you use amazingly well. There is a counterpart, of course, and with this configuration, you feel deeply comfortable at home, to the extent that you tend to set aside your professional goals, or to postpone them. Nevertheless, your empathy, your abilities to understand your close friends, and your propensity to create osmosis within your private sphere are very much worthwhile! You must not forget that, ineluctably, you must also plunge into the great bath of society and take a chance with people you do not know. Taking action in society is not necessarily in contradiction with feeling comfortable at home. You must totally integrate this truth in order to experience your professional life as successfully as your family life.

### ★★★★☆ Venus opposite Midheaven, orb -3° 06'

Venus is in opposition to your Midheaven, Charles III. It is not strictly speaking a dissonance since at the same time, this aspect is also a conjunction with your Imum Coeli which symbolises your home, your roots, and your family. Thus, it is obvious that your charm and the way you express your feelings work better in private circles than in society. When you do not feel in security, you are quite reluctant to display warmth, which may give the impression that your career or your destiny is a bit in the background, compared to what it might be if you did not feel this vulnerability, which is incidentally quite nice...

### ★★★★☆ Pluto trine Midheaven, orb 3° 17'

Pluto is in soft aspect with your Midheaven, Charles III. Your natural perspicacity and your propensity to move deeper into the understanding of all the things surrounding you may favour your career. Besides, in some circumstances, secret protections or relationships at work in the dark may very well help you climb up the stairs to success. At the same time, your intuition and your capacity to overcome pitfalls are your constant assets.

### ★★★★☆ Jupiter trine Saturn, orb -5° 22'

Jupiter and Saturn are favourably linked to each other in your natal chart. The Tradition indicates that this planetary aspect is a good omen for your social success and good integration in the society. Indeed, Jupiter stands for public life, respect for laws and hierarchy, and acceptance of established rules, whereas Saturn symbolises wisdom, time, seriousness, and perseverance. Therefore, it is only logical that with

this Jupiter - Saturn configuration, your career, or your social destiny if you do not work, is well thought of by society, and that you are most likely to experience its happy outcomes sooner or later.

★★★★★ Sun square Pluto, orb 5° 51'

You are dealing with both sides of the coin. People are mistaken when they think that they know you well, because the image you project does not necessarily depict what you really are. You may look like any given model, whereas you actually consider social values to be empty and childish. Deep down, you are an anti-establishment person and you do not belong to the world and its laws. Or, on the contrary, you may project a more marginalized image and make it a point of honour to literally stick to your aspirations' ethics. You do not know who you are really, and where you stand. You may choose some sort of marginality, the adherence to another realm and a different scale of values. Unless you choose a life that apparently lives up to the expectations of others. In that case, you preserve a corner for your private secrets, with no norms, no fashion concerns, relationships off the beaten tracks, passions very removed from conventions. Your attitudes may seem paradoxical as you shift from commitment to refusal and from involvement to withdrawal.

★★★★★ Mars trine Midheaven, orb -7° 4'

Your energy serves your professional goals and your social ascent in general, Charles III. This beneficial aspect of Mars to your Midheaven endows you with strong dynamism, and it rewards your sustained and efficient efforts. You enjoy taking action, and your results are gratifying most of the time.

## Your Assets and Your Part of Joviality

This is the best possible position for the planet of Greater Fortune in your chart, Charles III! It offers a lot of human warmth (or it counterbalances introversion, if such propensity is indicated elsewhere in your chart), the taste for travels, optimism, vitality and an enterprising mind. You are mobile and you have a large vision. Wisdom starts with the ability to consider life from a different angle and to put all things into perspective!

For you, Charles III, nature's present includes a lot of great satisfaction in the area of leisure, entertainment, creation and love. Anything with a hint of pleasure is favoured. A marvellous world exempt from constraint and obligation illuminates your life. According to the Tradition, your luck also applies to your communication with children and your descendants are harmonious and successful.

The planet Jupiter symbolizes expansion, broadness and generosity. Jupiter is associated with the functions of synthesis, enthusiasm and optimism. In your natal chart, his house position is more important than his sign position because, like Saturn, Uranus, Neptune and Pluto, he is a slow planet. Many people born in the same period have Jupiter in the same sign. This is the reason why the sign occupied here is less meaningful than when it is occupied by the so-called fast planets, i.e. the Sun, the Moon, Mercury, Venus and Mars. Therefore, some caution is to be exercised as you read what follows.

Jupiter in Sagittarius is very popular because he rules this sign, and, according to the Tradition, he is most potent and at his best. He endows you with all his natural qualities: enthusiasm, sense of humour, boldness, warmth, optimism, leadership, synthesizing mind, but also, propensity for travels or, symbolically, disposition for higher knowledge and matters such as spirituality, philosophy, politics or religion.

## Your Serious Side

Your concentration power and your control over your instincts increase as you mature. You become more methodical, analytical, and tidy, although you lose some degree of lightness and joviality.

Financial affairs, and more particularly, your earning capacity, constitute the challenges of your life, Charles III. In this area, your practical sense is not too good and remains to be improved. This is the first thing you should work in order to progress and to gain self-confidence.

You are distrustful and you spend too much time analyzing before taking action by yourself; you must understand that, to be able to win, you must accept to lose, to take risks, and to give for the sake of giving. There is no other way out. As time goes by, you use your persistence to gain material security and to steady the flow of your income in order to overcome feelings of frustration.

The planet Saturn symbolizes contraction, effort, time, limitation and concentration. Saturn eliminates anything that is not authentic, sooner or later. It is impossible to cheat him as he gives an irresistible desire to form a coherent whole with oneself, in responsible and wise ways. He is the great purifier. He represents our limitations but also our truth. In your natal chart, the house position where Saturn is posited is more important than his sign position because, like Jupiter, Uranus, Neptune and Pluto, he is a slow planet. Many people born in the same period have Saturn in the same sign. This is the reason why the sign occupied here is less meaningful than when it is occupied by the so-called fast planets, i.e. the Sun, the Moon, Mercury, Venus and Mars. Therefore, some caution is to be exercised as you read what follows.

Saturn in Virgo gives you a persevering and precise nature. This good combination increases your taste for sciences and for effort and you are constantly striving to improve yourself. Your tenacity works wonders.

## A Few Special Points

### Your Uniqueness and Your Utopias

Powerful protections, friendships, and supports are granted to you at a jerky rhythm throughout your life. There may also be break-ups that are as brutal as they are easy to forget because you manage to ensure that your contacts are brilliantly revived.

The friends you meet have strong personalities, or they may be quite special persons; indeed, you think of friendship as a rich and varied soil in which everyone must bring one's own contribution with one's touch of originality and difference. Otherwise, what's the use?

The danger is that you may embark upon projects that you cannot see through in the long run because they are too utopian. You may also count on partners who are too eccentric to be reliable. Or, on some occasions, you may show too much independence of mind or a boldness that is too strong to really last.

With this typical configuration, your popularity may fluctuate and disappear as quickly as it comes. It is up to you to set the limits of originality that you must not overstep, lest you should undergo unfortunate consequences.

## Your Inspiration and Your Illusions

Your vision of your childhood home, or of your father, is quite vague, but your emotions in these areas are intense. There is a vital need for you to feel comfortable at home because, otherwise, you tend to imagine horrors that exist only in your mind!

You may encounter complications, lack of understanding, or mystery regarding your origins or your real estate. In any case, it is hard for you to discern when you are "at home" and, even when all is well, you tend to idealize your household.

## Your Passion and Your Authority

Your close friends are aware that your underlying tension may break open as soon as you feel threatened or when your honour is tarnished by ambiguous actions or talks. You have an innate taste for power, and you exude a strong form of magnetism and authority.

Your need to transform both your environment and your personality may prompt you to display aggressiveness. But more often than not, it remains a form of blackmail in order to dominate others, something similar to the chess principle that "threat is better than implementation".

## Your Isolated Planets

In general, the ten planets of the chart are connected to other planets by major or minor astrological aspects. It is owing to those ties that the planets' energies can manifest in the chart owner's personality and play out within safeguards according to a specific tonality.

It seldom happens that in a natal chart, a planet is totally disconnected from the nine other planets.

Astrologers have observed that when such a case occurs, the person feels the energy of the unaspected planet in quite a singular way, very jerky and powerful at the same time. Thus, for instance, the famed astrologer Jean-Baptiste Morin de Villefranche wrote that "an unaspected planet heralds that something strange or extraordinary will take place regarding the meanings of the house in which the said planet is posited" (source : l'astrologie selon Morin).

Rules for detecting an unaspected planet: among all the testimonies that we have reviewed to this day, based on our experience, we tend to agree with American astrologer Janis Huntley who accepts seven aspects, which involve the zodiacal twelve sections of 30 degrees. The aspects to be considered are the conjunction (0 degree, cooperation or tension), the semi-sextile (30 degrees), the sextile and the trine (60 and 120 degrees respectively, aspects of cooperation), the square and the opposition (90 and 180 degrees respectively, tensed aspects), and the quincunx (150 degrees, slightly tensed). In this detection, the chart's angles are not taken into account.

In any case, it is important to remember that an isolated planet clearly expresses its influence when it is a personal planet. Thus, when the Sun, the Moon, Mercury, Venus, or Mars is isolated, it is certain that the effects described by Jean-Baptiste Morin de Villefranche will become manifest. As for Jupiter, Saturn, Uranus, Neptune, and Pluto, one must be cautious because the volume of cases documented is not yet



large enough.

Your chart has no isolated planet, and this particular case does not apply to you.

## Annex 1: Your Minor Dominants

The five following dominants are less significant than those described at the beginning of your report. They may not be strongly felt. In some cases, they add several minor details to the analysis of your character, but they are rather for curiosity purposes. It is not necessary to take them into account when you first read your portrait.

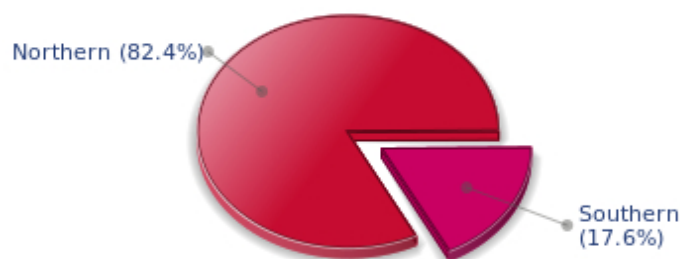
### Your Planetary Repartitions: Northern, Southern, Eastern and Western Hemispheres

The axis linking the 1st house's cuspide (the Ascendant) to the 7th house's cuspide - the Descendant - divides the zodiac into two bowls, a superior bowl, in the South, and an inferior bowl in the North. Quoting an expression by the famous American astrologer Rudhyar, the Southern part and the Northern part correspond to two functions: "being" and "doing". Other concepts are also associated with this North and South distribution, such as introversion - Northern hemisphere - and extraversion - Southern hemisphere - being or appearances, inner life or external life, reflection or action, dreaming one's life or living one's dreams, the abstract or the concrete, backstage or limelight.

This is not about determination but about personal inclination: thus, some people will be thrown into public life despite a prominent Northern hemisphere. If this happens, however, it will not be due to their will, their taste or their deep nature. Conversely, a prominent Southern hemisphere will not bring about a famous destiny to its owner, even if he tends to turn the spotlight on himself, or if he looks for a more active life. It is a matter of deep nature and natural inclination. Of course, none of the typologies is "superior" to another.

In your birth chart, Charles III, the ten main planets are distributed as follows:

### Your Northern and Southern Hemispheres



Charles III, the predominance of planets in the Northern hemisphere prompts you to reflect and imagine rather than to exteriorize your actions and to be at the forefront of the stage. So, should you wish to remedy this situation, it is up to you to force your nature to take action in broad daylight, to communicate, and to assert yourself... then, you can move forward in this concrete life and enjoy your newly won situation.

The birth chart is divided into two other parts, Eastern and Western, by the axis linking the Midheaven

to the Imum Coeli.

The Eastern part, on the Ascendant side, shows the person's ego, will, magnetism, and vitality, whereas the Western part, on the Descendant side, symbolizes other people, communication, relationships and their influence, as well as flexibility and adaptability.

Charles III, here is the planetary repartition in your Eastern and your Western hemispheres:

### Your Eastern and Western Hemisphere:



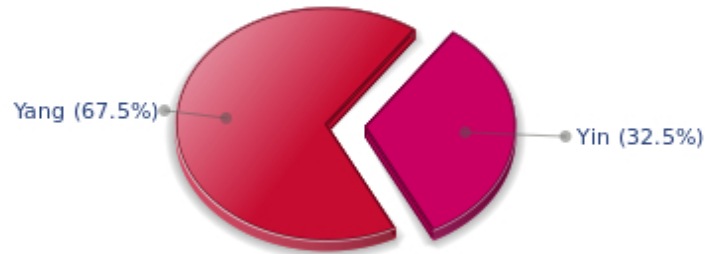
The predominance of planets in the Western hemisphere of your chart means that you are quite flexible, capable of empathy, convivial and communicative. An excellent factor for many professional activities or for your social or sentimental life for example.

A definite asset... provided that you are not at the centre of the decisions you must take in your life: you may be tempted to listen to the last person who spoke, and your flexibility won't always get you out of the tight spot. You are therefore advised to learn to decide alone and to cope with the consequences of your actions with courage and without regrets. This attitude will allow you to combine flexibility and action, adaptability and absence of hesitation.

### Your Yin and Yang Polarity

The twelve signs are divided into two polarities, called active or passive, or sometimes masculine and feminine, positive and negative, Yang and Yin. This classification corresponds to two quite distinct tonalities, the first one bringing extraversion, action, self-confidence and dynamism, the second one, introversion, reactivity, reflection and caution. None is superior to the other, each group has its own assets and shortcomings. Odd signs - Aries, Gemini, Leo, Libra, Sagittarius and Aquarius - belong to the first group, whereas even signs - Taurus, Cancer, Virgo, Scorpio, Capricorn and Pisces - belong to the second group.

## Your Yin and Yang Polarity



According to the disposition and qualities of your planets and angles, you are rather influenced by Yang energy, the active polarity, Charles III: more concerned about actions than reflection, you sometimes rush without standing back and without the deepness that is needed. However, your spontaneity prompts you to take fresh starts, even after repeated failures caused by your rashness.

### Your Houses' Accentuations

Houses are split up into three groups: angular, succedent and cadent.

The first ones are the most important ones, the most "noticeable" and energetic houses. They are the 1st, 4th, 7th and 10th houses. Their cuspides correspond to four famous angles: Ascendant for the 1st house, Imum Coeli for the 4th house, Descendant, opposite the Ascendant, for the 7th house and Midheaven for the 10th house, opposite the Imum Coeli.

Planets are evaluated according to a whole set of criteria that includes comprehensive Western astrology rules. At their turn, planets emphasize specific types of houses, signs, repartitions etc., as previously explained.

## Your Houses' Accentuations



Your angular houses, namely, the 1st, 4th, 7th and 10th houses, are very emphasized in your chart,

Charles III: according to the Tradition, they are the strongest and most dynamic houses. Should the rest of your chart concur, angular houses suggest that you are an enterprising, energetic and assertive man. Indeed, angular houses are said to generate impulsions and to give a powerful and domineering personality.

Unusual fates are often linked to a predominance of angular houses, but this is only a partial indication...

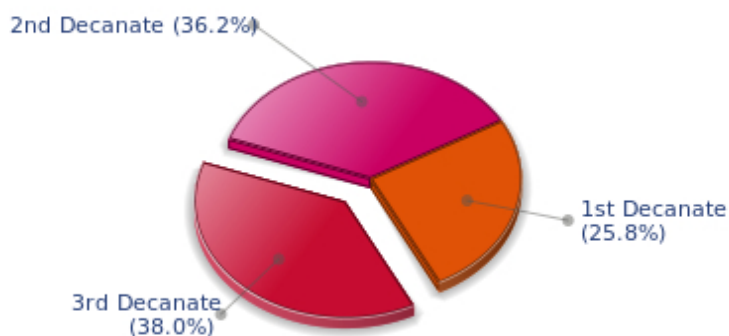
### Your Esoteric Decanates

Each sign contains 30 degrees and can be divided into three equal parts: the decanates. The Tradition indicates that specific meanings can be associated to each of the three decanates. Their sphere of activity is usually limited to the Sun sign, however, it is even more interesting to observe the distribution of all the planets in the chart to get an idea of the respective importance of the three decanates, which can complement the description of the personality.

These meanings must be considered with the greatest caution. Indeed, they are minor characteristics that can only underline other outstanding traits of character.

Traditionally, the first decanate highlights the characteristics of the sign where a planet is located. The two other decanates correspond to sub-dominant planets, depending on the nature of each sign. This system leads to a multiplication of meanings and it is impossible to have a clear understanding: here, we prefer to give only the meaning of one decanate in comparison with the other two, within the birth chart as a whole. Again, the greatest caution is needed with regard to this minor indication as it is not always reliable: it is not essential that you read these texts in the beginning. You can get back to them later on, once you have read more important interpretations

### Your Esoteric Decanates



The third decanate, which means the part between 20° and 30° of any zodiacal sign, prevails in your natal chart, Charles III. It contains the degrees of spirituality, traditionally more delicate to deal with, since they incline towards evolution and therefore, destabilizations. Individuals with an emphasised third decanate may have deeper sensitivity than most people, which often brings ordeals but also spiritual rewards.



## Annex 2: Karmic Study

The karmic theme is a good complement to the psychological portrait, or natal chart. This analysis is based on the positions of the Lunar Nodes, the Black Moon and the Part of Fortune: they are also called fictitious points and describe the spiritual purpose of your destiny. Because there is in all of us an experience and a quest, our life is an evolutionary journey... provided that we head towards the right direction, of course! Indian astrologers highly prize the Nodes axis (North Node and South Node). It is the Ariadne's thread that we are invited to follow. The Black Moon indicates the sector where we are most likely to transform or to transcend, whereas the Part of Fortune points out the area where we can easily express our specificity.

### The Lunar Nodes: a spiritual path

Lunar Nodes have their roots in the Indian tradition and they are based on a simple concept: each of us have a mission of their own, here on earth, a destiny, a course. According to the Indian philosophy, life is a school: the nodal axis describes our past experiences (South Node, our karma, our spiritual inheritance or our previous lives), and our aims on earth (North Node, our Dharma, the purpose of our current incarnation). This is the reason why the study of the lunar nodes is called "Karmic astrology". Here, we shall not step into hypothetical past lives. Wherever our current trends may come from, all that really matters is that we become aware of the purpose of our life, its finality and our dharma. We are likely to understand our life purpose around the age of 37, when the Lunar Nodes return to their natal position.

You are a rebel. Your extremist attitude earns you successes and setbacks, alternately, and prompts you to transform your lifestyle. However, you long for stability. Your life challenge is to accept to enjoy life's simple joys without gratuitously challenging your assets. As years and experiences go by, you learn the value of what you possess. Things that used to make you indignant, because they were too comfortable, become gradually highly worthy. Your progression encourages your level-headedness: in a first stage, you are prone to struggles, dissidence and contestations... that cause more delusions than satisfactions. Therefore, you set aside your outbursts of anger and strive towards wisdom: acceptance of facts – which does not mean resignation –, renunciation without submission. Although it may not please the frenzied adventurers, you need a minimal dose of quietness and comfort if you are to give of your best and to fully blossom!

Your life is marked with the major challenge of developing your social image, of asserting your personality... and of leaving your shell. Your childhood and your family roots are very present. You have an inclination for quietness, protections and intimacy. You enjoy at will the moments when you feel "at home", in known territory and familiar situations. But you must learn to thrive in society, to give of your best, to socially shine, particularly when you feel that external pressure and opinions are upsetting. Do not fall in the trap of your dreams and souvenirs! Life implies responsibilities and the will to control, otherwise you cannot feel your true self. You may be too dependent and you must learn to slowly become autonomous, free to take decisions and to take action. Your sense of duty allows you to climb all the steps of a perilous, yet thrilling, social ladder. As years go by, you claim more autonomy, more power and more freedom of action.

### Lilith or the Dark Moon

The Black Moon is the spark of refusal and distance that is dormant in all of us. Depending on the sign where she is found in your chart, she highlights the desire to transform and to sublimate a part of your life. The Black Moon is unfathomable and mysterious. She gives a different dimension to the sector she

touches. Her manifestations are subtle; nonetheless, she is powerful, implacable, demanding to the extreme... The Black Moon is also called Lilith. She is the inner flame of your heroism and insubordination.

The Black Moon here readily sacrifices the ties of this world to the essential: spiritual life and renunciation, fusion into an ideal. Your dreams are strange: life vagaries do not matter since your quest is internal. In the course of your progression, you may often show an unusual faculty of detachment. Although the reasons why you give up a given road for another one may not be always understood... though deep down, you know the reason why.

This configuration predisposes to the quest of the absolute on two accounts: firstly, the very nature of the Black Moon, implacable and extremist, and secondly, she is in a sector of the Zodiac that is traditionally evolutional but extremist. Here, you flirt with death, danger and challenge. Everything suggests transformation, abandonment and revival, passion and cruelty. There is no half-measure in your behaviour, only a terrifying and marvellous thirst for the absolute... That'll take some doing for the person who will experience it with required intensity!

### **The Part of Fortune in House**

The Part of Fortune is a very ancient fictitious point that depends on the lunar phase at the time of birth. The astrological house tenanted is particularly strengthened. In your chart, the Part of Fortune is in the 8th house: you need to constantly transform your life, to evolve and to shed your skin. You do not hesitate to regularly question the basis of your manner. Everything is death and revival and the wheel of life is ruthless: what was still yours yesterday will be a mere souvenir tomorrow... Your wealth is the know-how you demonstrate when you cope with changes imposed by events, while always remaining true to yourself.

### **Retrograde Planets**

The karmic tradition insists on the issues related to the so-called retrograde planets. They are considered to be the inheritance of a past that was not well experienced, a sort of unfinished business. The interpretations of the retrogradation may seem negative or excessive to you. However, you may relate to a scenario that you have often and repeatedly experienced... as if you underwent several setbacks that all have the same cause. Until the day you become aware of it and you can free yourself from it! Through the slow integration of these planetary energies, you will be able to overcome your difficulties and to pay your karmic debt. Actually, each retrograde planet highlights an opportunity for evolution. Nothing can be achieved without the will to grow spiritually and to defeat your own demons.

Uranus was retrograding on the day of your birth: you have the soul of a rebel and your behaviour may often be tyrannical or extremist. Your manner has brought you setbacks. You lack the flexibility that spares you the pain of forcing your ways through events. The danger may be that you get trapped into rigid patterns and into personal logics incompatible with others'. This is precisely what your life's lesson is about: as years go by, your judgments are more qualified and your attitudes become less cut-and-dried, less stubborn. You must lose the essentially individualistic character of your childhood and be more open to other people's ideas and problems. In other words, a path of love. Without losing your remarkable resolution, you must practice some form of renunciation and be sensitive to various logics that constitute the wealth of your social life.

**N.B:** modern astrology attaches less and less importance to the principles of retrograding planets.

## Conclusion

A few remarks are needed here in order to allow you to fully take advantage of your astrological portrait: firstly, do not forget that a birth chart is also a photograph of the sky at birth and a structure that not only contains the personality's characteristics, but also its potential evolution.

We all know that, in real life, people begin to know themselves when they are in their forties, or even later. Likewise, several traits of character in a portrait may seem surprising: in most cases, it means that such features are not yet developed.

Some personalities reveal themselves late in life, whereas others are more precocious. It must be remembered that psychological structures are in a state of continuous evolution because they are influenced by unfolding events and gradual maturity. We can never underline strongly enough the "mobile" nature of the personality, throughout a lifetime.

On the other hand, it is difficult to discriminate what is "already present" at this moment in your life when you are reading your chart's interpretation, from what will appear later in the logic of your evolution: you must sort out all the pieces of information provided and, in most cases, you will see that your astrological portrait is helpful for your endeavours to know yourself better.

Finally, several readings of an astrological portrait are usually necessary in order to absorb all its different meanings and to evaluate the relevance of each character trait.

In any case, better self-knowledge obviously contributes to faster personal blossoming, and it is undoubtedly one of astrology's major roles: contributing to know oneself better, in order to improve more rapidly, to deal with one's weaknesses and to avoid its drawbacks, and to take advantage of one's assets as efficiently as possible.

---