

**Bruce Willis's  
Astrological Portrait**





## Bruce Willis's Astrological Portrait



<b>Introduction</b>	<b>2</b>
<b>Your Planets, Houses, Aspects, and Natal Chart</b>	<b>4</b>
<b>Preamble</b>	<b>7</b>
<b>Your Planetary Repartitions</b>	<b>8</b>
<b>Your Dominant Modes and Elements</b>	<b>9</b>
<b>Your Dominants: Planets, Signs and Houses</b>	<b>10</b>
<b>Your Style, Behaviour, and Peculiarities</b>	<b>15</b>
<b>Your Sensitivity</b>	<b>19</b>
<b>Your Affectivity</b>	<b>20</b>
<b>The Way You Take Action and Your Sexuality</b>	<b>22</b>
<b>Your Intellect and Your Communication Style</b>	<b>23</b>
<b>Your Goals, Motivations, Career, and Destiny</b>	<b>24</b>
<b>Your Assets and Your Part of Joviality</b>	<b>27</b>
<b>Your Serious Side</b>	<b>28</b>
<b>A Few Special Points</b>	<b>28</b>
<b>Your Isolated Planets</b>	<b>29</b>
<b>Annex 1: Your Minor Dominants</b>	<b>31</b>
<b>Annex 2: Karmic Study</b>	<b>35</b>
<b>Conclusion</b>	<b>38</b>



# Bruce Willis's Astrological Portrait

## Introduction

To fully benefit from this portrait, we suggest that you read its introduction and its preamble carefully, and then that to take the time to soak up the interpretations of each chapter. Given the large number of texts, which mirrors the human being's complexity, you may need to go through the contents several times, so as to get a good grasp of their meaning and to know yourself better. This will reward your patience.

The purpose of this report is to describe your psychological portrait and to highlight the most fundamental features on the personal area. The report begins with the analysis of your planetary dominants and outlines your personality's general traits before going into further detail. Minor dominants are analysed at the end of Annex 1, for purposes of clarity. Your report then delineates the various facets of your personality:

In general, even when relationships are not involved, we express ourselves and we feel according to our character and our personal motivations: this is indicated by the Ascendant and the Sun sign which both give details on the way we function. They shed a tremendously important light which allows to figure out your personality. Here, we describe your Sun sign (your inner self), your Ascendant (your behaviour as seen by others), and the ruler of the Ascendant (interesting additional pieces of information about the style of your personality). These descriptions alone cover nearly a third or a half of your psychological signature, depending on your natal chart characteristics.

Then, we address your sensitivity, or in other words, the way you receive things and how you express your emotions ; it works as a constant filter for all your exchanges, even when it becomes a more secondary element in your amorous relationship, because at that moment, affectivity prevails. Sensitivity is the way you perceive things, it is your radar, your daily mood, and at the same time, it indicates how you react to your entourage, on a daily basis. It is what others immediately see of you. In the second paragraph, we explain in which areas of life your sensitivity and your emotions are strongest, therefore, where you are most vulnerable.

After this, it is your affectivity, the way you love and how you charm, that comes into play as soon as you fall in love: the first part indicates its basic structure or its main form. The second part describes the areas where it is best expressed and how you display it, according to your personality.

A third fundamental area deals with your mode of action and your sexuality: how you behave, how you manage to obtain what you want, what kind of desires you have. There are twelve possibilities, very

different from one another. The study discloses the specific one that applies to you. In the second paragraph, we explain in which life areas you may most efficiently take advantage of your capacity for action and for conquest.

Your ways of communicating and of thinking are obviously among the major elements that must be integrated into the delineation and the description of your personality. Indeed, they influence your general behaviour and may modify or enhance the image your project (for instance, extraversion may “compensate” a weak affectivity, but a huge number of cases are possible). An additional chapter indicates the favourite areas where you enjoy communicating, thinking and meeting with people.

Besides, we analyze an even more personal aspect that is important to define and understand what may occur within your couple: each of us have a centre of interest, a privileged manner to be fulfilled or to achieve our destiny; this main motivation is indicated by the positions of your Sun and your chart ruler in the astrological houses and we provide you with its detailed description.

A natal chart contains the potential for specific fulfilment and a whole range of assets, protections and qualities. How does the lucky factor manifest in your personality? In which area can you best exploit your qualities? The answers are precisely revealed to you in this chapter.

On the other hand, we all feel in us a part of vulnerability, doubts and fears. How does this part of solemnity or serious side play out? How is it possible to handle it in order to evolve and to get rid of useless elements? All this information is provided to you in these two paragraphs.

Then, you can discover three additional traits of your personality that must be considered as secondary ones. They deal with your predispositions, which means that they need to be triggered by external events because they are not influenced by your will; let's call it a part of fate. Please, bear in mind that your destiny can unfold only in accordance with what you are: therefore, even if they belong to your more unconscious self, these characteristics are parts of you, definitely.

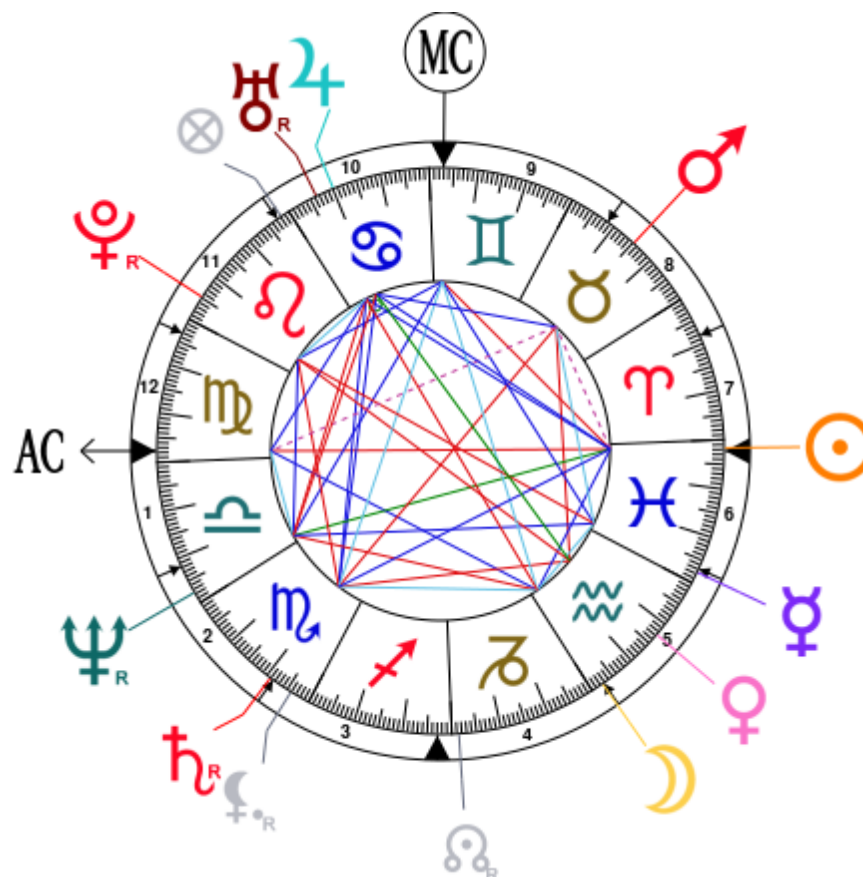
The karmic chart complements the psychological portrait or natal chart. It is based on the positions of the Lunar Nodes, the Black Moon, and the Part of Fortune. These elements of the chart, sometimes referred to as fictitious points, provide information about the spiritual meaning of your destiny. Owing to the fact that we all have in us acquired knowledge and the urge to go on a quest, our life is an evolutionary journey... However, these texts must be read with great caution: this is the reason why you will find this analysis in the Annex 2 of your report.

# Your Planets, Houses, Aspects, and Natal Chart

Bruce Willis, born March 19, 1955, at 06:32 PM, Idar-Oberstein (Rheinland-Pfalz), Germany [7.19E ; 49.42N ; 1E00]

Natal Planets			In House	Natal Houses (Placidus)	
☉ Sun	28°20'	♓ Pisces	House 7	House 1	27°42' ♍ Virgo
☾ Moon	2°31'	♒ Aquarius	House 5	House 2	21°42' ♎ Libra
☿ Mercury	2°23'	♓ Pisces	House 6	House 3	21°38' ♏ Scorpio
♀ Venus	17°19'	♒ Aquarius	House 5	House 4	27°04' ♐ Sagittarius
♂ Mars	14°48'	♉ Taurus	House 8	House 5	2°46' ♒ Aquarius
♃ Jupiter	19°54'	♋ Cancer	House 10	House 6	3°09' ♓ Pisces
♄ Saturn	20°53' R	♏ Scorpio	House 3	House 7	27°42' ♓ Pisces
♅ Uranus	23°40' R	♋ Cancer	House 10	House 8	21°42' ♈ Aries
♆ Neptune	27°38' R	♎ Libra	House 2	House 9	21°38' ♉ Taurus
♇ Pluto	24°49' R	♌ Leo	House 11	House 10	27°04' ♊ Gemini
♁ Node	1°26' R	♐ Capricorn	House 4	House 11	2°46' ♌ Leo
♇ Lilith	25°54' R	♏ Scorpio	House 3	House 12	3°09' ♍ Virgo
AS AS	27°42'	♍ Virgo			
MC MC	27°04'	♊ Gemini			

In keeping with the common practice, we consider that a planet posited within 1 degree of the next house belongs to that house. We allow an orb of 2 degrees for the ASC and the MC.



## List of Your Active Planetary Aspects

Please find below the list of all the active inter-aspects which are interpreted in this report, in addition to your planets in sign, in house, and all your planetary dominants. Since the aspects between slow-moving planets are of a collective nature, they are not displayed, in compliance with our interpretation rules.

- ★★★★★ Sun sextile Moon, orb -4° 1'
- ★☆☆☆☆ Sun semi-square Mars, orb 1° 27'
- ★★★★★ Sun trine Jupiter, orb -8° 26'
- ★★★★★ Sun trine Saturn, orb 7° 27'
- ★★★★★ Sun trine Uranus, orb -4° 4'
- ★☆☆☆☆ Sun inconjunction Neptune, orb 0° 42'
- ★★★★★ Sun opposite Ascendant, orb -0° 38'
- ★★★★★ Sun square Midheaven, orb -1° 16'
- ★★★★★ Moon semi-sextile Mercury, orb -0° 07'
- ★★★★★ Moon quintile Saturn, orb -0° 22'
- ★☆☆☆☆ Moon opposite Uranus, orb -8° 5'
- ★☆☆☆☆ Moon square Neptune, orb 4° 53'
- ★★★★★ Moon trine Ascendant, orb 4° 49'
- ★★★★★ Moon bi-quintile Midheaven, orb 0° 33'
- ★★★★★ Mercury quintile Mars, orb 0° 25'
- ★★★★★ Mercury trine Neptune, orb 4° 45'
- ★☆☆☆☆ Mercury opposite Pluto, orb -7° 34'
- ★★★★★ Mercury trine Midheaven, orb -5° 19'
- ★★★★★ Venus square Mars, orb -2° 3'
- ★☆☆☆☆ Venus inconjunction Jupiter, orb 2° 34'
- ★★★★★ Venus square Saturn, orb -3° 34'
- ★☆☆☆☆ Venus opposite Pluto, orb -7° 29'
- ★★★★★ Mars sextile Jupiter, orb 5° 05'
- ★★★★★ Mars opposite Saturn, orb -6° 04'
- ★☆☆☆☆ Mars sesqui-quadrant Ascendant, orb -2° 06'
- ★★★★★ Jupiter trine Saturn, orb 0° 59'
- ★★★★★ Saturn bi-quintile Midheaven, orb -0° 1'
- ★★★★★ Uranus sextile Ascendant, orb 4° 01'
- ★★★★★ Neptune semi-sextile Ascendant, orb -0° 03'
- ★★★★★ Neptune trine Midheaven, orb 0° 33'
- ★★★★★ Pluto sextile Midheaven, orb -2° 14'

## Meaning of Stars

Stars indicate the strength of the aspects. Two solid coloured stars (there are half-stars also), mean that the aspect is powerful enough to be noticed at the first reading.

We strongly advise that you read the paragraphs displaying less than two stars later on, after you have absorbed the full import of the other texts.

The yellow colour indicates a soothing and conciliating aspect, and the red colour, a dynamic and tense aspect. The red aspects enable you to evolve, to take action, and to learn to turn your "weaknesses" into assets through your life experiences. The yellow aspects are innate strengths on which you rely in order to grow better with the former...

## Preamble

When interpreting a natal chart, the best method is to start gradually from general features to specific ones. Thus, there is usually a plan to be followed, from the overall analysis of the chart and its structure, to the description of its different character traits.

In the first part, an overall analysis of the chart enables us to figure out the personality's main features and to emphasize several points that are confirmed or not in the detailed analysis: in any case, those general traits are taken into account. Human personality is an infinitely intricate entity and describing it is a complex task. Claiming to rapidly summarize it is illusory, although it does not mean that it is an impossible challenge. It is essential to read a natal chart several times in order to absorb all its different meanings and to grasp all this complexity. But the exercise is worthwhile.

In brief, a natal chart is composed of ten planets: two luminaries, the Sun and the Moon, three fast-moving or individual planets, Mercury, Venus and Mars, two slow-moving planets, Jupiter and Saturn, and three very slow-moving planets, Uranus, Neptune and Pluto. Additional secondary elements are: the Lunar Nodes, the Dark Moon or Lilith, Chiron and other minor objects. They are all posited on the Zodiac wheel consisting of twelve signs, from Aries to Pisces, and divided into twelve astrological houses.

The first step is to evaluate the importance of each planet. This is what we call identifying the dominant planets. This process obeys rules that depend on the astrologer's sensitivity and experience but it also has precise and steady bases: thus, we can take into account the parameters of a planet's activity (the number of active aspects a planet forms, the importance of each aspect according to its nature and its exactness), angularity parameters; (proximity to the four angles, Ascendant, Midheaven, Descendant and Imum Coeli or Nadir, all of them being evaluated numerically, according to the kind of angle and the planet-angle distance) and quality parameters (rulership, exaltation, exile and fall). Finally, other criteria such as the rulership of the Ascendant and the Midheaven etc. are important.

These different criteria allow a planet to be highlighted and lead to useful conclusions when interpreting the chart.

The overall chart analysis begins with the observation of three sorts of planetary distributions in the chart: Eastern or Western hemisphere, Northern or Southern hemisphere, and quadrants (North-eastern, North-western, South-eastern and South-western). These three distributions give a general tone in terms of introversion and extraversion, willpower, sociability, and behavioural predispositions.

Then, there are three additional distributions: elements (called triplicity since there are three groups of signs for each one) - Fire, Air, Earth and Water - corresponding to a character typology, modality (or quadruplicity with four groups of signs for each one) - Cardinal, Fixed and Mutable - and polarity (Yin and Yang).

There are three types of dominants: dominant planets, dominant signs and dominant houses. The novice thinks astrology means only "to be Aries" or sometimes, for example, "to be Aries Ascendant Virgo". It is actually far more complex. Although the Sun and the Ascendant alone may reveal a large part of the character - approximately a third or a half of your psychological signature, a person is neither "just the Sun" (called the sign) nor just "the first house" (the Ascendant). Thus, a particular planet's influence



may be significantly increased; a particular sign or house may contain a group of planets that will bring nuances and sometimes weaken the role of the Ascendant, of the Sun sign etc.

Lastly, there are two other criteria: accentuations (angular, succedent and cadent) which are a classification of astrological houses and types of decanates that are occupied (each sign is divided into three decanates of ten degrees each). They provide some additional informations.

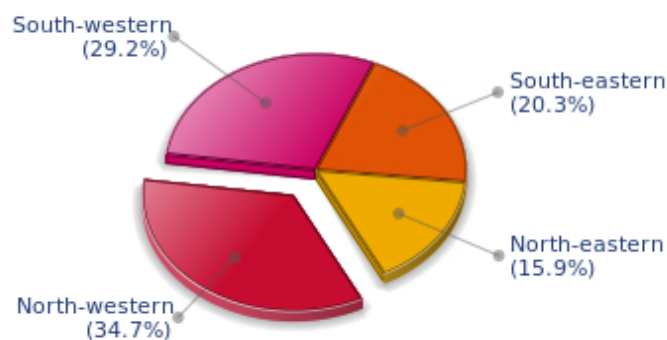
These general character traits must not be taken literally; they are, somehow, preparing for the chart reading. They allow to understand the second part of the analysis, which is more detailed and precise. It focuses on every area of the personality and provides a synthesis of all the above-mentioned parameters according to sound hierarchical rules.

As explained in the introduction of your Psychological Portrait report, minor dominants are analysed at the end of Annex 1, for purposes of clarity.

## Your Planetary Repartitions

Each quadrant is a combination of the four hemispheres of your birth chart and relates to a character typology. The Southern hemisphere – the top of your chart, around the Midheaven – is associated with extraversion, action, and public life, whereas the Northern hemisphere prompts to introversion, reflexion, and private life. The Eastern hemisphere – the left part, around the Ascendant – is linked to your ego and your willpower, whereas the Western hemisphere indicates how other people influence you, and how flexible you are when you make a decision.

### Your Four Quadrants

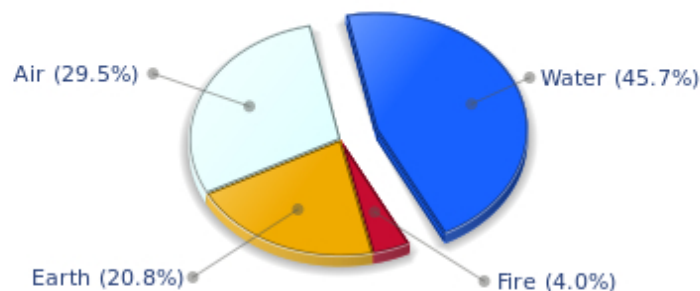


Bruce Willis, the nocturnal North-western quadrant, consisting of the 4th, 5th and 6th houses, prevails in your chart: this sector favours creativity, conception and some sort of specialization or training, with helpfulness and relations as strong components. You need others' cooperation in order to work properly, although you are not very expansive: creating, innovating and thinking are what matter most to you because this self-expression enriches you and totally satisfies you.

## Your Dominant Modes and Elements

Bruce Willis, here are the graphs of your Elements and Modes, based on planets' position and angles in the twelve signs:

### Your Four Elements



The predominance of Water signs indicates high sensitivity and elevation through feelings, Bruce Willis. Your heart and your emotions are your driving forces, and you can't do anything on Earth if you don't feel a strong affective charge (as a matter of fact, the word "feeling" is essential in your psychology). You need to love in order to understand, and to feel in order to take action, which causes a certain vulnerability which you should fight against.

Cheers for communication and mobility, Bruce Willis! The predominance of Air signs in your chart favours and amplifies your taste for relations and for all kinds of short trips, whether real (travels) or symbolic (new ideas, mind speculations). You gain in flexibility and adaptability what you lose in self-assertion or in pragmatism.

Fire's qualities are not very present in your chart, with only 4.04% instead of the average 25%, which means that you may lack warmth, enthusiasm, conquering spirit, or energy. You may look indifferent to others, with almost no desire, no joy of life or no enterprising ability. Actually, it is not true, but you should let go, force yourself to be more daring, and show your amazement as well as your vitality. You certainly have as much energy as others, you just need to release it, and it is up to you to display more of it, since it will be all to your benefit: shout, sing, pull faces, dance! That's the right mean for you... In the end, you'll never be accused of being sad, phlegmatic or a killjoy!

The twelve zodiacal signs are split up into three groups or modes, called quadruplicities, a learned word meaning only that these three groups include four signs. The Cardinal, Fixed and Mutable modes are more or less represented in your natal chart, depending on planets' positions and importance, and on angles in the twelve signs.

## Your Modes



The Mutable mode is the most emphasized one in your natal chart, Bruce Willis, which indicates a mobile character that is curious and thirsty for new experiences and evolution. You are lively and flexible, and you like to react quickly to solicitations, but don't confuse mobility with agitation, since this is the danger with this configuration - and with you, stagnation is out of the question. Security doesn't matter as long as you are not bored. You optimize, you change things, you change yourself... all this in a speedy way.

## Your Dominants: Planets, Signs and Houses

The issue of dominant planets has existed since the mists of time in astrology: how nice it would be if a person could be described with a few words and one or several planets that would represent their character, without having to analyse such elements as rulerships, angularities, houses, etc!

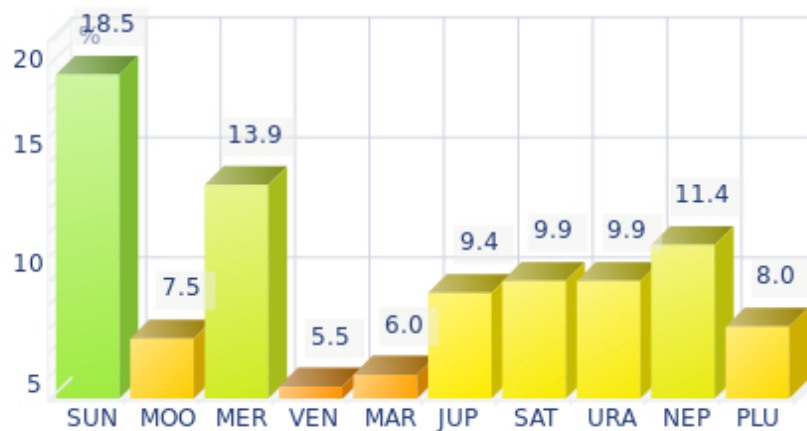
The ten planets - the Sun throughout Pluto - are a bit like ten characters in a role-play, each one has its own personality, its own way of acting, its own strengths and weaknesses. They actually represent a classification into ten distinct personalities, and astrologers have always tried to associate one or several dominant planets to a natal chart as well as dominant signs and houses.

Indeed, it is quite the same situation with signs and houses. If planets symbolize characters, signs represent hues - the mental, emotional and physical structures of an individual. The sign in which a planet is posited is like a character whose features are modified according to the place where he lives. In a chart, there are usually one, two or three highlighted signs that allow to rapidly describe its owner.

Regarding astrological houses, the principle is even simpler: the twelve houses correspond to twelve fields of life, and planets tenanted any given house increase that house's importance and highlight all relevant life departments: it may be marriage, work, friendship etc.

Bruce Willis, here is the evaluation diagramme for your planets:

## Your Dominant Planets



The three planets that are most highlighted in your chart are the Sun, Mercury and Neptune.

One of the dominant planets in your natal chart is the Sun. He symbolizes will, magnetism, sense of honour and dignity. You are a Solar being, and you often display charismatic and leadership qualities. Your warmth and your persuasive power lead you far away from pettiness. You enjoy thinking big and, consequently, you move forward according to what you decide.

Your Solarian weakness may be related to the sin of pride or to excessive authority. The frontier between pride and vanity is tenuous: be careful not to overstep it and to keep the nobleness of heart that is part of your charm.

With Mercury among your dominant planets, you are certainly cerebral, nervous, swift, curious, quick-witted, and you love to communicate. Your psychological pattern is intellectual, all the more so since Mercury is important, with its whole set of assets but also of weaknesses, obviously.

Your sensitivity, emotions, and heart's impulses give precedence to thinking, which can lead people to believe that you are a playful and witty but heartless person, intellectualizing situations and juggling with words and numbers whilst ignoring human aspects of things. Of course, it is said that cats always land on their feet - this is your Mercurian strength and your trump card!

Your weakness lies in your nervousness, and you may miss your goal because of your "over-intellectualization" that may be detrimental to other kind of energies such as instinct, spontaneity, heart, sensitivity, etc.

With Neptune as one of your three dominant planets, you are a secretive and ambiguous person, often confused or unclear about your own motivations! Indeed, you are endowed with unlimited imagination and inspiration, as well as with an extreme sensibility that may turn you into a psychic or a clairvoyant. On the other hand, your impressionability is such that you may have difficulties in separating what is concrete and solid from illusions or dreams.

A mystic, a visionary or a poet, you daydream, like any Neptunian, and you see what few people only can see, all of this being shrouded in aesthetic mists when you are fired with enthusiasm.

A boundless, infinity-loving man like you is inevitably likely to be more vulnerable and easily hurt because of your acute perception of events. In such cases, you are hit full in the face, and you may sink into gloomy daydreamings and dark melancholy.

That said, this mysterious aura definitely gives you an indefinable charm in the eyes of your close friends who are often fascinated by your unique ability to feel and to see what ordinary people can never see!

### Your Dominant Signs



In your natal chart, the three most important signs, delineated according to the above-mentioned criteria, are, in decreasing order of strength, Pisces, Aquarius and Virgo. They are often prominent because your Ascendant and your Sun are posited there. However, it is not always the case: it may be because they are occupied by a cluster of planets, by a planet near an angle other than the Midheaven and the Ascendant, or because two or three planets are very active and form numerous aspects from these signs. Therefore, you partly take on the three signs' characteristics, which are somehow superimposed on your natal chart, and all the more so if any of the signs in question is highlighted.

Pisces is among your dominant signs and endows your personality with unlimited sources of emotions, dreams, imagination, and sensitivity, to the extent that you literally swim in a cloudy ocean of delightful impressions. These impressions are so intense and overwhelming that you don't really need to take action concretely, to show your dynamism or your willpower, since you already live so intensely with your feelings - you are as keen as a radar, always on the alert! That is why some people may not like your carelessness, and the lack of clarity in your opinions or actions; however they quickly notice your artistic talents, your poetic or artistic side, and your total lack of wickedness. Besides, you feel compassion for people in pain - empathy is one of your great qualities. Thanks to your flexibility, your intuition, and your generosity, you may spend an important part of your life helping others. And if you are creative or if you have well-known artistic talents, everybody will forgive your little flaws: absent-mindedness, lack of energy or of will, too dreamy temperament...

Aquarius is one of the most important signs in your natal chart: it endows your personality - at least one of its facets - with originality, to the point of eccentricity, in spite of a sometimes distant and humane side. Likeable and impassive at the same time, you are a paradoxical man, very hard to define because the two planets Uranus and Saturn blend their qualities to create the so complicated and endearing sign that inspires your character. Saturn's seriousness and impassivity is added to Uranus' rebellion, talent, individualism, charisma, extravagance, and unpredictability! One of your main characteristics is that you

never open up on a personal basis, but you tend to do so easily in public. You are actually quite strange. Sexy and charming in public, despite your nice and sociable character, you could frustrate many of your admirers in private because of your impossibility to show deep and warm affection, emotions, tears... But appearance and reality are two different things anyway - you are a kind of a genius, or you have at least a tremendous charm with this sign. You have many friends and an active social life. If you are detached in your love life - only in this aspect, since the rest of chart will confirm it or not - this is no big deal!

Virgo, associated with perfectionism, numbers and reason, is among your dominant signs: you inherit its sense of responsibility and tidiness, a clear mind, an unflinching logic, as well as a need to be useful and to fulfil your task to the best of your abilities. Obviously, people may think that you are too modest or reserved, suspicious or pessimistic because of your exceedingly critical mind, but aren't logic and wisdom great qualities? Of course, they are. Moreover, you keep your feet on the ground, you never behave irrationally and you are helpful and hardworking - what more can you ask for?!

### Your Dominant Houses



Houses 7, 5 and 10 are the most tenanted ones in your natal chart. To compute their strength, planets and angles are weighed according to various astrological criteria such as swiftness, activity, angularity, rulership etc. From the analysis of the most tenanted Houses, the Astrologer deduces the fields of activity that are most relevant to you, be it because of what you are experiencing, or what you may experience in the future, or because of your deep inner motivations.

Your 7th house is one of your dominant houses: it symbolizes other people, marriages, associations, contracts, and partnerships. Your personal achievement and maybe your problems - depending on the rest of your chart - are mainly influenced by your rapports with others, the area in which you tend to commit yourself a lot. You appreciate communication, and you give importance to others' opinions. Success requires the support of others, which seems obvious and natural to you. Your marriage generally contributes to your fulfilment.

The 5th house is one of your dominant houses: hobbies, love life, sports, and games, including speculation and all kinds of entertainment, are fields that you actually take seriously! On a more subtle level, artistic creation as well as other forms of creation - including begetting children - could be one of your assets. You gain from taking part in leisure associations and various activity clubs in which a catchword resounds more than for most people: pleasure.

With a prominent 10th house, your destiny's achievement may be very notable: the 10th house represents your career, your public life, and your ambitions. A good deal of your energy may thus be used to successfully implement what you have in mind. Instinctively, you are very keen to make your dreams come true. Sooner or later, you will deal with the public, and your personal achievement will go through trials and ordeals: other people and visible actions.

## Your Style, Behaviour, and Peculiarities

What is commonly known as "sign" indicates the position of the Sun in the Zodiac. The Sun highlights all the characteristics of the sign he tenants. According to astrology traditional rules, these characteristics are all the more pure and exact when the Sun is strong in the sign, or when the sign is particularly highlighted within the chart. Here, we indicate the pure characteristics of the sign but you must bear in mind that they may only shed a light on a particular aspect of your personality. Indeed, the sole sign of the Sun, or of the Ascendant, can never describe an astrological chart because it depends on the degree of strength of the said sign in your chart.

Another important point must be underlined. Contrary to the Ascendant, which clearly describes your appearance, your vitality, your physical constitution, your spontaneous behaviour and the image you project, your Sun sign describes your inner self, which you may not completely be aware of, and which may emerge gradually as you mature: it is about your inner personality that you reveal only to the members of your entourage whom you trust. The Sun sign is likely to be the final form of your personality, once it has evolved in line with the energies of the other parts of your chart, the beginning of which is seen in the Ascendant, your external "bark".

The Ascendant is one of the major components of your natal chart. It is the zodiacal sign that rises in the East at the very moment of your birth. To calculate it, it is therefore necessary to know your exact time of birth.

It provides with a wealth of information on your personality. It is one of the key features that allows the analysis of several parts of you, such as your appearance, your character as it is initially perceived and your immediate behaviour. It describes the external aspect of your personality which you always display, but it also describes your physical constitution in the long-term, in other words, your health.

Please be aware that, in spite of the importance of the Ascendant, the accuracy of its description depends on how strongly highlighted it is in your natal chart. We use the entire set of astrological rules to assess the strength of the Ascendant. In most cases, the Ascendant is as revealing as your "sign", i.e., the sign where the Sun is posited at the time of birth.

## You were born under the sign of Pisces and your Ascendant is in Virgo

Before broaching the details of the meaning of your Sun and your Ascendant, as a preamble, we offer a brief generic interpretation of their combination in your chart:

Pisces and Virgo occupy opposite places in the zodiacal wheel and blend together to shape your personality. Let's begin with their common features. They both appreciate discretion, and they are driven by the will to be of service and to help communities and individuals alike. Self-sacrifice prevails over the need to enhance your image because you are indifferent to the esteem people may or may not hold you in. This may be an exaggeration of the qualities of these humble signs. Indeed, people often make fun of Pisces' masochism and Virgo's inferiority complex. Unlike Virgo, Pisces usually trusts its intuitions and acts according to its huge hopes – and despairs – probably because of its idealistic and disinterested vision of the world. It is doubtless that your close friends and relatives know this mysterious and slightly forgetful facet. However, in line with the demands of your Virgo Ascendant, when you meet



people for the first time, you come across as a more rational and pragmatic person. It is correct to say that the sense of organisation and observation are your wild cards. This zodiacal duet can be likened to the characters of The Cicada and the Ant, the fable by 17th century French author Jean de Lafontaine, with Pisces in the part of the cicada, and Virgo in that of the ant.

### **You were born with the Sun in Pisces**

Psychologically speaking, your nature is adaptable and receptive, exactly the opposite of the sign of Virgo whose very essence is to analyze every detail, thus creating a definite duality between the self and the outside world: conversely, Pisces absorbs and erases all forms of differentiation they face. With Pisces, there is no opposition, no conflict and no individual reaction. There is only fusion, non-separation, a perpetual and mobile spreading of the self over some blurred and huge sensation of sympathy with the environment. It is the absolute reign of feelings and emotions over the intellect and its separative logics.

As you are born under this sign, you are emotional, sensitive, dedicated, adaptable, nice, wild, compassionate, romantic, imaginative, flexible, opportunist, intuitive, impossible to categorized, irrational, seductive, placid, secretive, introverted, pleasant, artistic, and charming. But you may also be indecisive, moody, passive, confused, wavering, lazy, scatterbrained, vulnerable, unpredictable and gullible.

In love, Sir, you are the very type of the sentimental romantic in the highest meaning of the term. You live your love affairs in your mind. You upkeep the weft of your endless daydreamings just to exacerbate your emotions and your feelings, over and over again.

You fall in love frequently and according to how your encounters develop. You adjust to the person you set your heart on and you may harbour illusions because your imagination and your capacity to intensely live a virtual life are very strong. You are utopian and you are so gentle that you usually achieve your aims in spite of your boundless passivity: you seldom take the first step, except when you are thrown a line, which is as big as a tree trunk...

You live for love and through love. Your only weakness may be your lack of determination at the early stage of a relationship. However, once you get started, if there is any compatibility, you trap your prey with your overflowing affectivity and your unlimited sensuality.

Pisces' waters are shifting and changeable. When other opportunities appeal to you, you are able to handle two relationships simultaneously. You achieve an alternate osmosis with your partners and you see no harm in doing so, because you live the instant with plasticity and in communion.

You loathe solitude and you prefer to be caught in the nets of a woman even though she does not match your personality. If, by lack of chance, your partner belongs to the domineering and unscrupulous type, you may be trapped and wake up bitter and disappointed that you extended for too long the illusion of a marvellous story.

Once you find your soul mate, your home is usually harmonious. In your couple, love is immense, even mystical. Like a wave, it bathes the shores of your emotions, which range from the noblest feelings to the wildest physical passions. Since you merely live in concrete life, it is necessary that your partner be well grounded, so that your home is well up kept and your children are properly reared!

## **Your Ascendant is in Virgo**

Psychologically speaking, your nature is nervous and secondary. Before you take action, you cautiously ponder over things and you review any possible alternative and reaction. You strive systematically to find the best possible response to any given problem. You are a perfectionist above all and you have no rest until you optimize a situation, in each and every area, be it professional, pragmatic, aesthetic or in pleasure. You do not accept spontaneity and, to fully enjoy life and go further, you consider that demanding the best is the least you can do, even though it is detrimental to the rough force associated with your instinct. The intellectual element intervenes before both the physical ones and your feelings: it is one of the essential clues to understanding your personality.

As you are born under this sign, you are cerebral, clear-sighted, focused on details and on numbers, analytic, serious, competent, reasonable, modest, tidy, organized, spruce, industrious, provident, honest, loyal, reserved, shy, helpful, willing to progress, talkative, perfectionist, logical, hardworking, tactful, patient, precise, concrete, spiritual. You can also be narrow-minded, calculating, irritating, petty, pernickety, hung up, anxious, cold, repressed or sarcastic.

In love, Sir, your inner self is different from what you seem to be: you are sensual and affectionate and you find it hard to show it because your nature is to be cautious, reserved and analytical. You think too much, which gives you a cold and distant look. However, it is a mask that you wear and take around with you. As soon as you feel in confidence, you become able to take off the mask and to reveal your true face. You are critical and perfectionist and you must be cautious enough to keep your comments to yourself, especially in this particular area.

In the fields of sex and affection, real confidence is an imperative pre-requisite. Otherwise, it is impossible for you to show your true self and to remove the mental screen that proves so efficient in other areas, but that is very burdensome and inhibiting in the private sphere.

When you manage to do so, you become a charming, sensual and endearing partner and you communicate easily thanks to Mercury who rules your sign.

You are loyal, organized, conformist, more suited for celibacy. But once you take your decision, you are quiet and tidy and you will bring up your children according to the best traditional principles.

Because Virgo is a dual sign, there may be two marriages, or there may be a love affair in parallel.

## **The ruler of your chart is in Pisces**

The ruler of the Ascendant, also referred to as the chart ruler, brings a few interesting nuances to the meanings provided by the Sun and the Ascendant. The sign in which the ruler of the Ascendant is posited fine-tunes the style of personality described by the Sun and the Ascendant. It may strengthen it if the sign is identical to either of them.

The ruler of your Ascendant is in the same sign as your Sun. This specific feature means that the Sun's characteristics in sign previously delineated are strengthened.

## Aspects to your Ascendant

Several planets form an aspect with your Ascendant, Bruce Willis. Therefore, in their specific way, they modify your behaviour and your personality, which do not take on the pure characteristics of your Virgo Ascendant only, but which are a blend of its characteristics with those of the said aspects.

### ★★★★★ Sun opposite Ascendant, orb -0° 38'

The opposition of the Sun to your Ascendant cannot be really interpreted as a dissonance, Bruce Willis, but rather as a conjunction with your Descendant, or DS, the angle symbolising "other people". Thus, although your capacities for self-assertion, decision-making and shining may not entirely match your natural demeanour as an isolated individual, they can be wonderfully expressed through unions and associations. Indeed, there is a discrepancy between the Self and your behaviour. It is obvious that this aspect slightly tones down magnetism and strength, but at the same time, it puts you at the service of other people in a way that neither alters your personal value, nor puts you in tricky situations.

### ★★★★★ Moon trine Ascendant, orb 4° 49'

Your instinct seldom misleads you, as far as your external appearance is concerned, thanks to the Moon's soft aspect with your Ascendant, Bruce Willis. You keep your emotions under rather good control, in instinctive and smooth ways.

### ★★★★★ Neptune semi-sextile Ascendant, orb -0° 03'

Neptune in soft aspect with your Ascendant endows you with a sharp intuition which enables you to instinctively adopt the behaviour which your entourage appreciates, Bruce Willis. You have the natural flair which prevents you from making errors of judgment on people. You understand the crowd, and you have the good reflexes for being well-accepted by all.

### ★★★★★ Uranus sextile Ascendant, orb 4° 01'

Uranus is in soft aspect with your Ascendant, Bruce Willis. Although your behaviour is original, nonconformist, and free, it is not unpleasant. On the contrary, this facet of your personality is sometimes considered by other people as endearing and unpredictable, in the good sense of the word. One never gets bored in your company because you are often found where you are not expected, whether regarding your ideas, your lifestyle or the way you react. You possess the charm independent and free persons are endowed with!

### ★★★★★ Mars sesqui-quadrate Ascendant, orb -2° 06'

When Mars is in dissonance with the Ascendant, Bruce Willis, in some particular circumstances, it may translate into hastiness, and even hostility on your part, which your entourage may not understand. You have audacity galore, but it is up to you to show alertness, so that you don't come across as a short-tempered person unable of self-control.

## Your Sensitivity

Your sensitivity is devoid of infatuation or carelessness, Bruce Willis; you belong to the cerebral type and, due to your needs for inner security and for freedom, you consider feelings and emotions as burdens. You are apparently phlegmatic and almost detached. However, your swift reactivity and your fertile imagination make you appreciate friendly gatherings with numerous and varied exchanges. You do not wear your heart on your sleeve. At first, you seem cold but those who know you are aware of your very original and unique sense of humour. Your receptiveness is remarkable. Your observation talents and your detachment work wonders in the defence of your anti-conformist and rebellious ideas. Your stubbornness is obvious and it is very difficult to make you change your mind because you are affectively too vulnerable: it would require lengthy and thorough argumentations aiming at your intellect...

Entertainments, hobbies and parties, love affairs, holidays, here are the areas where you express best your emotions, Bruce Willis. You like children's company, your popularity is often good and you use it in order to increase the number of your encounters in order to see your seductive power.

You are often endowed with artistic creativity. Art is a good outlet for all these gushing and fluctuating emotions that must be released at the slightest external stimulation.

### ★★★★★ Moon square Neptune, orb 4° 53'

This Moon-Neptune dissonance wonderfully turns on the poetic soul, the exhilaration of feelings and dreams... and disturbs your practical life, as well as the management of contingencies. You do not lack inspiration but your reasons of living may be beyond your entourage's understanding! Bohemian life is pleasant but it is probable that you experience muddled situations. Your aims are noble and your intentions are very good. But you may not have the will to turn them into reality. It is important that you are wary of artificial paradises: escaping in the imaginary is not necessarily the best solution for problem solving. You are in search of an inaccessible tranquillity and you tend to procrastinate chores. Nevertheless, facts remain present and you may see that non-interventionism can only increase your difficulties. You must put an end to this vicious let-go circle. This does not imply that you have to forsake your dreams or to repress your very rich sensitivity.

### ★★★★★ Sun sextile Moon, orb -4° 1'

This aspect is a strong homogeneity factor: the image you project is in conformity with your real nature and does not upset your basic balance. This is probably the cause of your feeling at ease, your consistent behaviour and your determination to remain your true self, regardless of external pressures and whatever is expected from you. At best, your will and your sensitivity are in harmony, your unconscious abilities are mobilized and controlled by your conscious will, with no imbalance. However, it is important to avoid the traps of self-satisfaction that would be harmful to your real exchanges and would lock you up in comfortable and rigid schemes. It is possible to remain natural and yet, not be content with the sole well being of those who never cheat themselves.

### ★★★★★ Moon quintile Saturn, orb -0° 22'

This harmonious Moon-Saturn aspect is an element of stability for your private life. Your daily life lives up to your demands, you are totally true to yourself and logical through your very intimate behaviour. You do not choose the easy way out: on the contrary, it is in difficult situations that you are at your best. It is very unlikely that you become destabilized by trifles. This aspect indicates stability and also perfectionism. You are longing for a private life respectful of your heart of hearts and your genuine desires. Your well being is at this price, and its quest remains perpetual. Despite your reserved private

behaviour, your emotions run very deep. You have a strong need for protection and for security. Your aspirations lead you towards contemplation or studies, more than towards social futilities.

#### ★☆☆☆☆ Moon opposite Uranus, orb -8° 5'

The Moon and Uranus intrinsically share little in common: they get along as well as fire and water! It is difficult for you to reconcile your desire for well being and intimacy with your destiny's dazzling passions and thunderbolts. You may feel that your intimate and family realm hampers your freedom. There is a potential for crises, explosions or splits. The desire for independence does not get on well with security concerns. There may be strong temptations endangering your very life foundations and you may embark upon a liberating and personal adventure. However, you fear rash decisions. Your need for security may temper your impulses and put a brake on your individualistic aspirations. To harmonize these tendencies within your intimate life, you must leave yourself enough room for personal expression or for an activity of your own. Otherwise, as days go by, built-up tensions may jeopardize the quiet course of your life.

## Your Affectivity

In your chart, the Sun is in Pisces and Venus, in Aquarius. Between the subtle detachment of the Sun in Pisces and the excitement of Venus in Aquarius, the contrast is striking: more than anyone, you are aware that one shifts quickly from fascination to disenchantment or from indifference to amazement. These two consecutive signs react in an antinomial way: while Venus in Aquarius readily gives free rein to her heart or her senses' impulses, the Sun in Pisces does not follow these fleeting stimulations and remains impervious, unyielding and selective. Aquarius is optimistic because the relationship is constantly evolving (tomorrow is another day...). Pisces knows or feels the limits of the relationship (the end is for tomorrow...). You may be criticized for these inconsistencies: I love you madly today and not any more tomorrow. I don't love you but when you leave me, I am hurting! Your affectivity lives on all these paradoxes. More than others, you need to be amazed and to be seduced... Indifference occurs so rapidly! You give a lot to those who deserve your esteem because of their qualities or their shortcomings. Indeed, you may find certain flaws quite seductive because they extol your compassion and your taste for strangeness at the same time.

In love, you are more cerebral and friendly than really passionate, Bruce Willis. You are made for amorous friendships, for refined and light feelings where each partner retains one's freedom, and almost detachment, without getting really committed. Sometimes, you may be distant from, and indifferent to, love matters for a while, because you can be completely engrossed in original intellectual pursuits and the collective atmosphere which you are so fond of. You substitute a great number of friendly and light contacts to amorous relationships and it is fair to say that they satisfy you. To fall in love, you need spice and a partner who is original, who amazes you and whom you admire; under such conditions, you can freely express your feelings in an ambiance devoid of constraint, where freedom is perfectly respected and shared within the couple.

Bruce Willis, your Venus has a natural affinity with this house. She feels very comfortable and she gives her best in terms of intensity of feelings, artistic creativity, inclination for leisure, entertainment, fine arts and music gifts and even, the capacity to easily communicate with children. With Venus in this house, more than in any other position, the affectivity is increased and endows you with an active and enterprising attitude, in this area of life. Creativity is associated with the 5th house and Venus here allows you to blend pleasure and motivation, not only in the field of artistic creation and entertainment, but also

in love, where you are prompted to fearlessly create or to actively develop romantic relationships with the elected person. Besides, you are particularly at your best here, more ready to extend extreme kindness, warmth or seduction than in any other of your daily activities. However, the danger with this position is to fall prey of your own great ability to please, to seduce or to enjoy yourself, be it through romantic dissipation or through sheer pleasure to shine.

★★★★☆ Venus square Mars, orb  $-2^{\circ} 3'$

This Venus-Mars aspect indicates a sensitivity all on edge and an impulsive character. Emotions and heart impulses cause a marked tension. Life is an affective battlefield. Love is omnipresent but often fragile: impulsiveness reigns over the realm of feelings. The object of desire may become irresistible and implacable, or the sense of confrontations prevents affective tranquillity. However, the richness of your emotional responses is to be noted: you are more inclined than others to be guided by amorous fevers and you live intense passionate experiences. Your overwhelming impressionability must be contained. Romantic people seldom enjoy tranquillity!

★★★★☆ Venus square Saturn, orb  $-3^{\circ} 34'$

This Venus-Saturn dissonance indicates a demanding, complex and often challenged affectivity. You are wondering about the meanings of love, pleasure and emotions. Your passions take an absolute character right away. No compromise, no sham must stain your sentimental life. In such a context, doubts abound. This aspect prompts you to review the roots of your affectivity, so as to find the assurance you lack and to soothe your dormant sentimental anxiety. Love is an eternal and endless quest. Because you are doubtful of the affection people have for you, you may never feel that you are really loved. Your affective behaviour reveals your uncertainties: tests and challenges follow one another until, eventually, you are certain to experience a love that meets your demands. It is obvious that on the sentimental area, you are not looking for the easy way out.

★★★★☆ Venus opposite Pluto, orb  $-7^{\circ} 29'$

Nothing is simple in love. You consider your love life with a distant and remote glance. You do not believe in obvious, transparent relationships. Love is a complex issue and its machinery is beyond you. To avoid delusions and indifference, the rules must be changed. Your feelings are alternately cruel and passionate, distant and burning, often paradoxical. Are you the executioner or the victim? Power struggles are omnipresent in your affective life. You seem unable to take life as it comes and to love without asking yourself questions, without doubting. You often love those who are indifferent towards you, while you despise those who love you. It is important that you change your attitude if you want a smooth and happy life. Rely on your forte: an indisputable lucidity that makes it impossible to delude your heart.

★★★★☆ Venus inconjunction Jupiter, orb  $2^{\circ} 34'$

This Venus-Jupiter dissonance indicates a strong will to seduce. However, there may be discrepancies between your words and your actions, as well as between your behaviour and your instinctive reactions. You may be carried away by a maelstrom of emotions, feelings and pleasures and you do not consider the possible consequences of your superficial attitude. Therefore, the apparent state of grace may turn into delusion. Proprieties and necessities of the moment forbid you to experience your desires. What you deem reasonable does not suit your heart's impulses. What a dilemma... Hopefully, as time goes by, you may reconcile your desires, your life patterns and the reasons of your heart with those of your mind.

## The Way You Take Action and Your Sexuality

Bruce Willis, the way you take action gains in power and in precision what it loses in rapidity and spontaneity. You are “slow”, certainly. But when you get started, you put all your ingenuity and your persistence into it and you love to see a job well done. At the end of the day, owing to your ways, you are the winner. In your sex life, similarly, you are generous and instinctive and your slowness is not an obstacle. It may even bring fulfilment to you, but above all, to your partner! In love, as well as in your exchanges in general, you tend to keep your worries to yourself because you are extremely patient; you don't say anything, you stand all the hits and one day, you explode into outbursts of anger that are as violent as they are rare, thanks God.

Bruce Willis, this atypical configuration in your natal chart is one of the most complex to describe because of the very nature of the 8th house, the house of transformation, of crises leading to personal reconstruction, but also the house of sexuality, hidden knowledge, investment and inheritance.

In addition, the 8th house always deepens emotions and quickly brings passion into the previously mentioned areas. In this house, the quality of Mars' expression depends on the rest of the natal chart.

In order not to make mistakes, it is safer to talk about a possible range of fields of predilection: your energy can be expressed efficiently in areas dealing with financial investment, death, possessions and sexuality.

This configuration may also simply increase the intensity of emotions connected with these hidden topics and, depending on the rest of your natal chart, it may or may not translate into life assets. More than with any other placement, you can be born again from your ashes, like the phoenix. After having undergone a few major ordeals, it is likely that you will have the strength and courage to do so.

### ★★★★ Mars opposite Saturn, orb -6° 04'

Why should you take action? And how? The surrounding world is not to be trusted. Past events have taught you to question simple situations and to intervene after thorough consideration. You are vulnerable to the traps of life, to confrontations and struggles. You may complicate your behaviour at will, often missing your target due to your self-censoring. Your interventions may lack spontaneity. You must overcome your doubts and acquire the certainty that you are able to handle realities and facts. If you make that effort, you can understand that there are many ways to make life simpler for yourself.

### ★★★★★ Mars sextile Jupiter, orb 5° 05'

Coordinated action wins over almost all obstacles! You mobilize your energy and your fighting spirit advisedly and you take timely action. This is the reason why you are efficient in situations requiring courage, determination, swift responses and diplomacy, altogether. You do not fear confrontations but you never provoke them unnecessarily. You take advantage of your chances and you adjust your behaviour to concrete situations. You empirically handle events with relevance. The only danger is that you may be overzealous to seize any opportunity... even those that are not necessarily good in the long run. You should take the time to carefully consider the facts and their consequences. The swiftness of your reactions must remain an asset.

★★★★★ Sun semi-square Mars, orb 1° 27'

This aspect shows impulsivity, a fiery character and sensitivity all on edge. The excess of strength and energy may jeopardize your life balance and cause impulsive and unconsidered actions. Your ideals are not always in line with your deeds. You are certainly reactive and you stand for yourself heroically. But your untimely fits of anger may worsen existing tensions and bring about uncontrollable situations. Facts contradict your aspirations. When this configuration is properly reined in, it becomes an inexhaustible source of passion and energy.

## Your Intellect and Your Communication Style

Your thinking process works on a rather instinctive and intuitive mode, Bruce Willis. You “feel” more than you understand, as if your reasoning were not active. Your strong receptivity and your natural empathy make you an understanding, pleasant, warm and benevolent person although you may be neglectful, even heedless. You are shy and anxious and you prefer to withdraw and to isolate yourself in a quiet place in order to give free rein to your inspiration, rather than to assert yourself. Despite your lively imagination, it may be hard for you to get out of the flow of your mystical and irrational thoughts, with the result that you become even more worried and impressionable. You must develop your logic, rational mind and your willpower, so as to gain self-confidence and creativity. Try and see...

It is at work that you can release your mental power full steam ahead, Bruce Willis. What's the point of racking one's brains if it's not to show one's professional value, to climb the social ladder, to earn one's colleagues' esteem, and to improve oneself every day. You adjust very well to your work environment or at least, this is one of your main concerns.

Your intelligence is rather practical or concrete and you are often interested in health and sometimes in pets, and you are very keen to turn each day into a source of intellectual stimulation.

★★★★★ Mercury trine Neptune, orb 4° 45'

Your sense of psychology and of human intimate mechanisms is acutely developed. Your relations are nuanced, clever and guided by a good intuition of individuals. Without effort, you pick up what is at stake in relationships and in contacts. Your « sixth sense » inspires you and may take you into strange roads. On the relations' plane, there is an indisputable subtlety. You know what you should not say or, on the contrary, you naturally find the suitable words. Your natural and non-rational attitudes often prove right. The unknown fascinates you... Your curiosity for occultism and mystery is keen. Besides, life is a huge human enigma for you.

★★★★★ Mercury opposite Pluto, orb -7° 34'

Forget simplicity! You definitely enjoy acting behind the scenes and dealing with what is going on underneath. You play games and you operate in the dark. You leave the front of the stage to others and to the gullible ones. You don't display much sociability. When you are nice, it is because you are looking for flaws. This Mercury-Pluto dissonance mingles unconscious fantasies with reality. When it is kept under control, this aspect becomes an unparalleled source of discernment. To that aim, you must overcome your strong tendency for provocations. It is certainly amusing to play destabilizing games but it may also be dangerous. Keep this treatment for your opponents only.



★★★★★ Moon semi-sextile Mercury, orb  $-0^{\circ} 07'$

Curiosity is part of your nature. You perceive everything with sharp acuity. You increase your attempts to establish connections and to exchange opinions and information, particularly when you are in a familiar and intimate context. When this configuration is well integrated, it underlines the multi-faceted nature of the mobility that defines your behaviour and your living conditions and endows you with strong adaptation abilities. You also show a remarkable gift for improvisation and you pick up the quality of the atmosphere so swiftly that you get off any tricky situations. However, you must keep your adaptation capacity under control because when it is overdeveloped, it may become an agent for instability.

★★★★★ Mercury quintile Mars, orb  $0^{\circ} 25'$

The harmonic Mercury-Mars aspect is the signature of a quick wit and an energetic character. You take decisions rapidly and you implement them straight away. You never accept stiff situations. You need to design, to take action, to fight to express your acute sense of relation: the world, the people, everything is of concern to you... You need to be involved in relationships and in dialogues. Your sharp retorts earn you a reputation of straightforwardness. On the relations' area, your quick wit and your mobility are greatly appreciated. You find the allies and partners you need at the right time. An art of resourcefulness that is precious...

## Your Goals, Motivations, Career, and Destiny

### Your Sun is posited in the 7th House

To assert yourself, Bruce Willis, you cannot rest until you multiply your contacts. Although you do not consciously understand your ambition early in life, you need to shine through your relationships.

It may take the form of a tendency to rapidly get involved in associations, groups or clubs; you feel fine as soon as people are around you because your communication skills are always highlighted and appreciated; your style is not what matters most because your main concern is to be noticed as soon as you are in contact with the world.

You are meant for marriage, the ultimate form of association. Usually, your destiny is dependent on your marriage, either directly through its consequences on your career and your lifestyle, or indirectly and, in the long run, through the supports and help you may gain, particularly owing to your honesty and your assertive skills. Marriage constitutes the apotheosis of your ambitions. As you unconsciously understand it, your entire will strives to achieve this aim since your adolescence. You have the required flexibility and talent to turn the life of your couple into daily harmony.

This area is only one of the facets of the fields where you positively exercise your will but... you do so with so much strength and talent!

With this configuration, everything seems all roses. However, it is not as simple and easy as it may look: your will to shine through others and your almost frantic search for contact may hide a fear of solitude and a lack of self-confidence. Why would you constantly seek confirmation of your own worth into other people's eyes if it were not to dispel your own doubts?

You are easily influenced and your apprehension about loneliness and not being up to it may cause

troubles and out-of-proportion reactions; struggles, conflicts of authority or even lawsuits may be harmful. You often get over them because your determination to show that you are at your best is stronger than anything else.

Your challenge is to manage to please others and to conceal your domineering and too assertive side: however, do not make too much effort because, in all cases, you will be equally appreciated. Remember that it's better to let well alone!

### **The ruler of your chart is in the 6th House**

The ruler of the Ascendant, also referred to as the chart ruler as explained in a previous chapter, is also posited in one of the twelve Houses of the chart. Just like the Sun in his House, the ruler of the Ascendant provides certain abilities, or it makes you appreciate more keenly certain areas of life.

The ruler of your chart is in the 6th House, Bruce Willis. This position gives you the desire to be helpful, and turns you into a perfectionist concerned with details and with work well done. Domestic routine and exchanges with colleagues - if you are working - is an important element of your fulfilment. You may be interested in health matters.

### **Aspects influencing your ambitions**

Regarding your destiny or your career, the following aspects of your natal chart allow to fine-tune what has just been said above:

★★★★★ Neptune trine Midheaven, orb 0° 33'

Thanks to this soft aspect of Neptune to your Midheaven, Bruce Willis, your intuition is very sharp, as far as your possibilities for success are concerned. Thus, you have no difficulties in finding your professional or social path, and your nose tells you whether something is good or not for you, even before you start to analyse it. Your imagination and your visionary qualities accompany you along your journey towards success.

★★★★★ Jupiter trine Saturn, orb 0° 59'

Jupiter and Saturn are favourably linked to each other in your natal chart. The Tradition indicates that this planetary aspect is a good omen for your social success and good integration in the society. Indeed, Jupiter stands for public life, respect for laws and hierarchy, and acceptance of established rules, whereas Saturn symbolises wisdom, time, seriousness, and perseverance. Therefore, it is only logical that with this Jupiter - Saturn configuration, your career, or your social destiny if you do not work, is well thought of by society, and that you are most likely to experience its happy outcomes sooner or later.

★★★★★ Sun square Midheaven, orb -1° 16'

What you really want to do, or the way you consider everything, may be in contradiction with your professional goals, Bruce Willis. You may experience conflicts of authority, or a few hesitations over how to manage your career. In any case, you must display flexibility and water down your wine if you want to remain on the right track and achieve professional success. It is the only solution to this discrepancy between the Sun and your Midheaven.

★★★★★ Pluto sextile Midheaven, orb -2° 14'

Pluto is in soft aspect with your Midheaven, Bruce Willis. Your natural perspicacity and your propensity to move deeper into the understanding of all the things surrounding you may favour your career. Besides, in some circumstances, secret protections or relationships at work in the dark may very well help you climb up the stairs to success. At the same time, your intuition and your capacity to overcome pitfalls are your constant assets.

★★★★★ Sun trine Uranus, orb -4° 4'

This aspect reinforces the determination as well as the will to further your original, sometimes revolutionary, ideas and designs. Your capacity of innovation is important for your image. You have the soul of a leader. You display a forceful and synthesizing mind. You may tend to oversimplify or to schematize situations. In most cases, you know where you are heading to and how to reach your goals. Your determination is two-edged... not everybody will appreciate your contrasted standpoints. It is yes or no, black or white! This planetary configuration indicates certainties. When it comes to acting according to your inner motivations and to respecting your models, you can show an unusual willpower and sweep aside all obstacles lying on your path.

★★★★★ Mercury trine Midheaven, orb -5° 19'

Mercury in soft aspect to your Midheaven enables you to easily communicate with your entourage and to climb up the social ladder, Bruce Willis. Your strategy is often good, and you correctly think about your interests. Do not change anything!

★★★★★ Saturn bi-quintile Midheaven, orb -0° 1'

Thanks to this soft aspect between Saturn and your Midheaven, your long-term efforts and your perseverance are rewarded, and you gradually climb up the stairs of success. Time is your ally as far as your career and social destiny are concerned. Carry on the good work, and rest assured that your seriousness and your obstinacy are appreciated. They are instrumental in your success, especially during the second part of your life.

★★★★★ Sun inconjunction Neptune, orb 0° 42'

If this Sun-Neptune dissonance is not well integrated, it may bring about confusions and errors of judgment. It is the signature for Don Quixote in search of chimera, pursuing impossible dreams. Your intuitions may lead to an incorrect estimation of facts. Bohemian life is certainly pleasant. But it is often necessary to remain realistic, lest to be exposed to delusions. Carelessness and letting-go is not suitable. In order to properly integrate this aspect, you must control the possible drift of a wandering and fabulous sensitivity. This aspect favours poetic and romantic inspiration. But you must not let it rule your concrete actions. It is important to allow your intuitive capacities to be fully expressed while keeping a lucid mind, simultaneously.

★★★★★ Moon bi-quintile Midheaven, orb 0° 33'

Your sensitivity and your emotions are in line with your goal and your ambitions, Bruce Willis. You do not need to curb your temper lest other people have a wrong perception of you. Indeed, by being your true self, very simply, your social ascent will unfold naturally.

★★★★★ Sun trine Saturn, orb 7° 27'

This aspect indicates a firm and discreet will, a rigorous and objective character. You are clear-sighted, particularly in difficult situations. You enjoy the moments of calm and solitude during which you can

review your life at will. Your judgments are enduring and often extremist. You are outraged by injustice and inconsistency. When a problem arises, you do not take the easy way out with short-term solutions, on the contrary, you strive to solve the issue thoroughly. Better than anyone else, you challenge yourself, you review your choices and your attitudes. This is the reason why you are capable of handling crises and of overcoming any obstacle that requires an in-depth and relevant response. You may lack spontaneity but your behaviour reveals your wisdom. When you are facing an issue, you put forward the good question, to others, but also to yourself.

★★★★★ Sun trine Jupiter, orb -8° 26'

This harmonious Sun-Jupiter aspect indicates an optimistic background that usually wins the entourage's adherence. It also suggests ambition and generosity and favours social integration and success. The desire to earn general consideration prompts you to display energy, joviality and benevolence. However, opportunism may be the other side of the coin. As you strive to win everyone's esteem, you may fall into disrepute. It is important that you remain clear-sighted so as to persistently pursue your long-term aims without believing that you should always « grab each and every opportunity ». However, this aspect remains an element of success because it allows you to adjust your objectives to the context, to whatever the situation offers or, on the contrary, to force your way through events and to achieve your ideals.

## Your Assets and Your Part of Joviality

This planetary configuration in your chart is very positive, Bruce Willis, because Jupiter, the planet of Greater Fortune, is in his exaltation, which means, in a privileged position. Jupiter protects your family area and later, your own home. Your sense of responsibilities is increased, your inclinations for comfort and customs are strengthened; usually, you are well integrated in society. You mature affectively early, and this fact enables you to avoid many setbacks. The only danger with this pleasant configuration may be your attraction to good things, in all areas, and their consequences.

This present from the stars is by no means insignificant, Bruce Willis, the house of career, hosting the planet of Greater Fortune, can but favour your professional life. As time unfolds, it develops into a most pleasant scope. Sooner or later, it brings about success and your peers' recognition. You do not fear responsibilities, and you face them properly.

The planet Jupiter symbolizes expansion, broadness and generosity. Jupiter is associated with the functions of synthesis, enthusiasm and optimism. In your natal chart, his house position is more important than his sign position because, like Saturn, Uranus, Neptune and Pluto, he is a slow planet. Many people born in the same period have Jupiter in the same sign. This is the reason why the sign occupied here is less meaningful than when it is occupied by the so-called fast planets, i.e. the Sun, the Moon, Mercury, Venus and Mars. Therefore, some caution is to be exercised as you read what follows.

Jupiter in Cancer is in the sign of his exaltation, which means that he is at great ease and he can express his essence more powerfully. He amplifies your emotions, your imagination and your optimism. You can be a good head of family or you develop a natural interest for matters linked to your home, your roots, your patrimony or that of your family. All your domestic affairs are protected.

## Your Serious Side

Perspicacity and profundity, and ability to dissect your passions. You manage to add a dose of reason into the analysis of your most intense moods, and you learn to step back from them. Your instincts are well-controlled, sometimes, a bit too much.

Impersonal detachment or cold-looking demeanours may hamper your communications, Bruce Willis, although they increase your concentration, your patience, and your ability to study and to accumulate knowledge. As far as your entourage is concerned, quality prevails over quantity, and you can easily alternate agitated and eventful periods with periods of solitude.

Your challenge is certainly to make an effort in order to be less demanding from people and to keep a minimal number of relations. Nobody is perfect, and neither are you! Pay attention to people's qualities and forget their flaws, for they should not prevent you from enjoying their company.

The planet Saturn symbolizes contraction, effort, time, limitation and concentration. Saturn eliminates anything that is not authentic, sooner or later. It is impossible to cheat him as he gives an irresistible desire to form a coherent whole with oneself, in responsible and wise ways. He is the great purifier. He represents our limitations but also our truth. In your natal chart, the house position where Saturn is posited is more important than his sign position because, like Jupiter, Uranus, Neptune and Pluto, he is a slow planet. Many people born in the same period have Saturn in the same sign. This is the reason why the sign occupied here is less meaningful than when it is occupied by the so-called fast planets, i.e. the Sun, the Moon, Mercury, Venus and Mars. Therefore, some caution is to be exercised as you read what follows.

Saturn in Scorpio reinforces your resistance. Your demand for precision and your will to comprehend all things may make you seem a bit tough or harsh to your entourage. Because you are fond of precision, you are interested in exact sciences; your capacity to understand mysteries is strengthened. You learn to control your instincts, even though it may be detrimental to your spontaneity.

## A Few Special Points

### Your Uniqueness and Your Utopias

This is one of the most potent configurations. Unexpected disruptions of considerable intensity often occur on the factual plane. Embracing changes is the basis of the success of your destiny, which is very likely to include extreme variations, sometimes towards the most glorious heights, sometimes towards ordeals that you face with courage and determination, despite your unpreparedness.

Originality is certainly the context of your professional life or your destiny, in one way or another. Whether it is expressed through your very special area of expertise (high technology, space, aviation, astrology, television, etc.) or through the totally hectic nature of your progression (sudden changes of orientation), you are not able to plan what is coming next. Unforeseen events undertake to make a clean sweep of your certainties. This may offer many advantages if your state of mind is ready to approach life as a journey where your only freedom is to adjust in the best possible way to new emerging situations.

Most of the time, you are very independent, very keen to show your professional talents in a unique and

modern way. You are a kind of pioneer or rebel in your area, which allows you to better assert your genius.

### **Your Inspiration and Your Illusions**

Your relationship to money is particularly vague. You tend to avoid analyzing your financial resources, as though this topic were neither important nor real. You belong to the category of people who never know how much they have in their bank account and in their purse.

This approach is positive in that, if you have a strong sixth sense, you can get good bargains more easily than other people... It may be some sort of blindfolded fortune, although there are real dangers of losing a lot and of being deceived.

Beware not to overstep legal boundaries, lest someday your carelessness in the financial area gets you into big troubles. It would be a pity if what you earned, thanks to your sixth sense, were taken away from you.

### **Your Passion and Your Authority**

Your approach to friendship is peculiar, and your affective tendency is to commit yourself in an intense and passionate way. In other words, you do not want to, or you cannot be satisfied with a light and superficial friendship where you lose sight of your friends or meet with them sporadically. It is all or nothing, with you. Preferably all, of course, with the potential for evolution and transformation for both you and your friends.

In most cases, all is well, as long as your friends' character puts up with a relationship that may appear as burdensome, or even threatening, due to your desire for domination. You tend to influence your friends and to show your might. When they resist you or antagonize you, it is hard for you to remain cool.

Passion and friendship certainly get along well and, more generally, you may exercise your influence and play a major role in team works, within collective projects.

Your friendships, as well as the supports and protections granted to you, are likely to bring about both the better and the worse. If you are aware of that, you may become able to choose only the better.

### **Your Isolated Planets**

In general, the ten planets of the chart are connected to other planets by major or minor astrological aspects. It is owing to those ties that the planets' energies can manifest in the chart owner's personality and play out within safeguards according to a specific tonality.

It seldom happens that in a natal chart, a planet is totally disconnected from the nine other planets.

Astrologers have observed that when such a case occurs, the person feels the energy of the unaspected planet in quite a singular way, very jerky and powerful at the same time. Thus, for instance, the famed

astrologer Jean-Baptiste Morin de Villefranche wrote that "an unaspected planet heralds that something strange or extraordinary will take place regarding the meanings of the house in which the said planet is posited" (source : l'astrologie selon Morin).

Rules for detecting an unaspected planet: among all the testimonies that we have reviewed to this day, based on our experience, we tend to agree with American astrologer Janis Huntley who accepts seven aspects, which involve the zodiacal twelve sections of 30 degrees. The aspects to be considered are the conjunction (0 degree, cooperation or tension), the semi-sextile (30 degrees), the sextile and the trine (60 and 120 degrees respectively, aspects of cooperation), the square and the opposition (90 and 180 degrees respectively, tensed aspects), and the quincunx (150 degrees, slightly tensed). In this detection, the chart's angles are not taken into account.

In any case, it is important to remember that an isolated planet clearly expresses its influence when it is a personal planet. Thus, when the Sun, the Moon, Mercury, Venus, or Mars is isolated, it is certain that the effects described by Jean-Baptiste Morin de Villefranche will become manifest. As for Jupiter, Saturn, Uranus, Neptune, and Pluto, one must be cautious because the volume of cases documented is not yet large enough.

Your chart has no isolated planet, and this particular case does not apply to you.

## Annex 1: Your Minor Dominants

The five following dominants are less significant than those described at the beginning of your report. They may not be strongly felt. In some cases, they add several minor details to the analysis of your character, but they are rather for curiosity purposes. It is not necessary to take them into account when you first read your portrait.

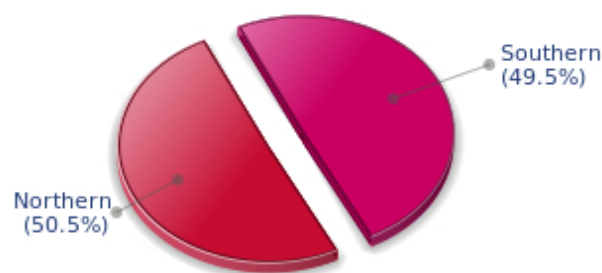
### Your Planetary Repartitions: Northern, Southern, Eastern and Western Hemispheres

The axis linking the 1st house's cuspide (the Ascendant) to the 7th house's cuspide - the Descendant - divides the zodiac into two bowls, a superior bowl, in the South, and an inferior bowl in the North. Quoting an expression by the famous American astrologer Rudhyar, the Southern part and the Northern part correspond to two functions: "being" and "doing". Other concepts are also associated with this North and South distribution, such as introversion - Northern hemisphere - and extraversion - Southern hemisphere - being or appearances, inner life or external life, reflection or action, dreaming one's life or living one's dreams, the abstract or the concrete, backstage or limelight.

This is not about determination but about personal inclination: thus, some people will be thrown into public life despite a prominent Northern hemisphere. If this happens, however, it will not be due to their will, their taste or their deep nature. Conversely, a prominent Southern hemisphere will not bring about a famous destiny to its owner, even if he tends to turn the spotlight on himself, or if he looks for a more active life. It is a matter of deep nature and natural inclination. Of course, none of the typologies is "superior" to another.

In your birth chart, Bruce Willis, the ten main planets are distributed as follows:

### Your Northern and Southern Hemispheres



Bruce Willis, the planetary elements of your chart are well balanced between the North and South hemispheres. As a result, your public destiny and your inner life are harmonious, and there is no conflict between your actions and your thoughts. Your private and public spheres coexist in harmony and naturally match your temperament.

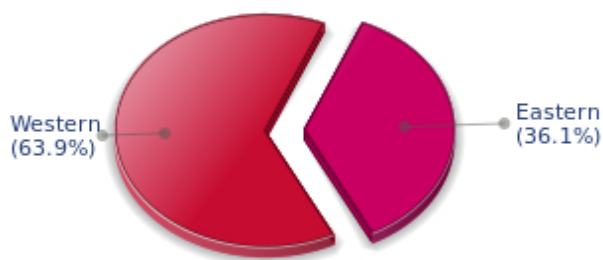
The birth chart is divided into two other parts, Eastern and Western, by the axis linking the Midheaven to the Imum Coeli.



The Eastern part, on the Ascendant side, shows the person's ego, will, magnetism, and vitality, whereas the Western part, on the Descendant side, symbolizes other people, communication, relationships and their influence, as well as flexibility and adaptability.

Bruce Willis, here is the planetary repartition in your Eastern and your Western hemispheres:

### Your Eastern and Western Hemisphere:



The predominance of planets in the Western hemisphere of your chart means that you are quite flexible, capable of empathy, convivial and communicative. An excellent factor for many professional activities or for your social or sentimental life for example.

A definite asset... provided that you are not at the centre of the decisions you must take in your life: you may be tempted to listen to the last person who spoke, and your flexibility won't always get you out of the tight spot. You are therefore advised to learn to decide alone and to cope with the consequences of your actions with courage and without regrets. This attitude will allow you to combine flexibility and action, adaptability and absence of hesitation.

### Your Yin and Yang Polarity

The twelve signs are divided into two polarities, called active or passive, or sometimes masculine and feminine, positive and negative, Yang and Yin. This classification corresponds to two quite distinct tonalities, the first one bringing extraversion, action, self-confidence and dynamism, the second one, introversion, reactivity, reflection and caution. None is superior to the other, each group has its own assets and shortcomings. Odd signs - Aries, Gemini, Leo, Libra, Sagittarius and Aquarius - belong to the first group, whereas even signs - Taurus, Cancer, Virgo, Scorpio, Capricorn and Pisces - belong to the second group.

## Your Yin and Yang Polarity



According to the disposition and qualities of your planets and angles, you are rather influenced by Yin energy, the passive polarity, Bruce Willis: you are quite introverted, imaginative and sometimes discreet, but you are a deep and wise person who is not content with just noisy and flashy things. At times, you doubt but you think that those who don't are a bit... thoughtless. Allow yourself to take more laid-back attitudes and put your reserve aside, because good equilibrium is always healthier.

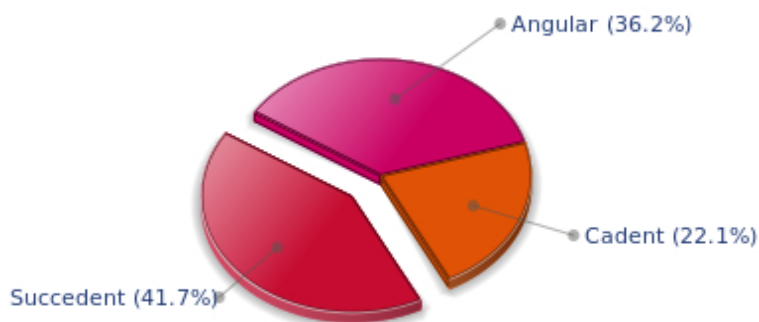
### Your Houses' Accentuations

Houses are split up into three groups: angular, succedent and cadent.

The first ones are the most important ones, the most "noticeable" and energetic houses. They are the 1st, 4th, 7th and 10th houses. Their cusps correspond to four famous angles: Ascendant for the 1st house, Imum Coeli for the 4th house, Descendant, opposite the Ascendant, for the 7th house and Midheaven for the 10th house, opposite the Imum Coeli.

Planets are evaluated according to a whole set of criteria that includes comprehensive Western astrology rules. At their turn, planets emphasize specific types of houses, signs, repartitions etc., as previously explained.

## Your Houses' Accentuations



The emphasis is on succedent houses in your chart, namely, the 2nd, 5th, 8th and 11th houses, Bruce Willis: this configuration usually endows a personality with affective and sensitive qualities. Obviously, to the detriment of self-confidence or self-assertion, but your heart qualities may be very important. These houses also favour realization. Time and patience are part of their characteristics. However, they are only indications and you must include them in the rest of your chart in order to see whether they are validated or not!

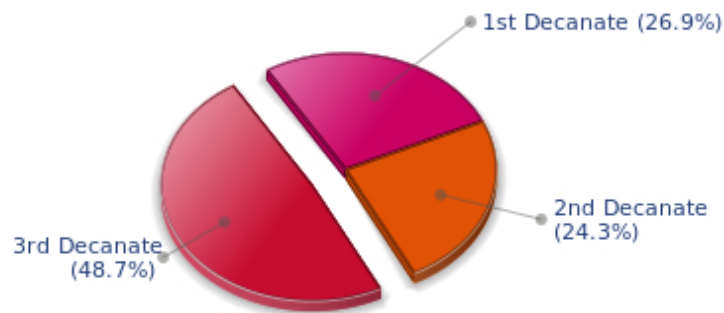
### Your Esoteric Decanates

Each sign contains 30 degrees and can be divided into three equal parts: the decanates. The Tradition indicates that specific meanings can be associated to each of the three decanates. Their sphere of activity is usually limited to the Sun sign, however, it is even more interesting to observe the distribution of all the planets in the chart to get an idea of the respective importance of the three decanates, which can complement the description of the personality.

These meanings must be considered with the greatest caution. Indeed, they are minor characteristics that can only underline other outstanding traits of character.

Traditionally, the first decanate highlights the characteristics of the sign where a planet is located. The two other decanates correspond to sub-dominant planets, depending on the nature of each sign. This system leads to a multiplication of meanings and it is impossible to have a clear understanding: here, we prefer to give only the meaning of one decanate in comparison with the other two, within the birth chart as a whole. Again, the greatest caution is needed with regard to this minor indication as it is not always reliable: it is not essential that you read these texts in the beginning. You can get back to them later on, once you have read more important interpretations

### Your Esoteric Decanates



The third decanate, which means the part between 20° and 30° of any zodiacal sign, prevails in your natal chart, Bruce Willis. It contains the degrees of spirituality, traditionally more delicate to deal with, since they incline towards evolution and therefore, destabilizations. Individuals with an emphasised third decanate may have deeper sensitivity than most people, which often brings ordeals but also spiritual rewards.

## Annex 2: Karmic Study

The karmic theme is a good complement to the psychological portrait, or natal chart. This analysis is based on the positions of the Lunar Nodes, the Black Moon and the Part of Fortune: they are also called fictitious points and describe the spiritual purpose of your destiny. Because there is in all of us an experience and a quest, our life is an evolutionary journey... provided that we head towards the right direction, of course! Indian astrologers highly prize the Nodes axis (North Node and South Node). It is the Ariadne's thread that we are invited to follow. The Black Moon indicates the sector where we are most likely to transform or to transcend, whereas the Part of Fortune points out the area where we can easily express our specificity.

### The Lunar Nodes: a spiritual path

Lunar Nodes have their roots in the Indian tradition and they are based on a simple concept: each of us have a mission of their own, here on earth, a destiny, a course. According to the Indian philosophy, life is a school: the nodal axis describes our past experiences (South Node, our karma, our spiritual inheritance or our previous lives), and our aims on earth (North Node, our Dharma, the purpose of our current incarnation). This is the reason why the study of the lunar nodes is called "Karmic astrology". Here, we shall not step into hypothetical past lives. Wherever our current trends may come from, all that really matters is that we become aware of the purpose of our life, its finality and our dharma. We are likely to understand our life purpose around the age of 37, when the Lunar Nodes return to their natal position.

Your life is marked with the major challenge of developing your social image, of asserting your personality... and of leaving your shell. Your childhood and your family roots are very present. You have an inclination for quietness, protections and intimacy. You enjoy at will the moments when you feel "at home", in known territory and familiar situations. But you must learn to thrive in society, to give of your best, to socially shine, particularly when you feel that external pressure and opinions are upsetting. Do not fall in the trap of your dreams and souvenirs! Life implies responsibilities and the will to control, otherwise you cannot feel your true self. You may be too dependent and you must learn to slowly become autonomous, free to take decisions and to take action. Your sense of duty allows you to climb all the steps of a perilous, yet thrilling, social ladder. As years go by, you claim more autonomy, more power and more freedom of action.

Your entourage respects your manner: you belong to the category of persons who arouse their close friends' consideration because of their straightforward, sometimes rigid attitude. The concern that you must "maintain your rank" may increase the severity of your judgments and lead to intransigence. You are sensitive to the prestige of your social standing and you show an acute sense of responsibilities since your youth. You become an adult early in life and you always avoid dependency. Your life's challenge is to learn to handle your intimate and family life as well as you manage your career. In the private sphere, you may undergo difficulties: you are a real loner and you turn down any help and affection offered by your entourage. You deny yourself the sweetness of a comfortable and reassuring home. However, as time goes by, you will overcome your reluctance and you will allow what you most value, deep down: love and tenderness to blossom within a privileged relationship, within a family...

### Lilith or the Dark Moon

The Black Moon is the spark of refusal and distance that is dormant in all of us. Depending on the sign where she is found in your chart, she highlights the desire to transform and to sublimate a part of your life. The Black Moon is unfathomable and mysterious. She gives a different dimension to the sector she

touches. Her manifestations are subtle; nonetheless, she is powerful, implacable, demanding to the extreme... The Black Moon is also called Lilith. She is the inner flame of your heroism and insubordination.

This configuration predisposes to the quest of the absolute on two accounts: firstly, the very nature of the Black Moon, implacable and extremist, and secondly, she is in a sector of the Zodiac that is traditionally evolutional but extremist. Here, you flirt with death, danger and challenge. Everything suggests transformation, abandonment and revival, passion and cruelty. There is no half-measure in your behaviour, only a terrifying and marvellous thirst for the absolute... That'll take some doing for the person who will experience it with required intensity!

Twin relations (those that include your fellow creature, your double) are an object of fascination. You are in quest of your soul mate, your identical being rather than your complement... This attitude brings about exaltations and setbacks: you think that you recognize that special one who really resembles you? Differences, however, grow more painfully as time unfolds. But your search of an absolute relation may also become the cement of a close and privileged couple, impervious to life vagaries.

### **The Part of Fortune in House**

The Part of Fortune is a very ancient fictitious point that depends on the lunar phase at the time of birth. The astrological house tenanted is particularly strengthened. In your chart, the Part of Fortune is in the 11th house: anything that has a human nature catches your attention. Friends, ideals, great humanitarian causes... You have original ideas for the betterment of the world. You do not consider the Tradition – or Traditions – to be immutable and ossified. It is important that you work on a reform or an overhaul of existing institutions: although you do not turn into a revolutionary, you are sensitized to society or educational projects. With the help of your entourage, and because, better than anyone else, you can earn the consideration of your close friends, you will slowly transform your familiar surroundings... since you cannot change the world!

### **Retrograde Planets**

The karmic tradition insists on the issues related to the so-called retrograde planets. They are considered to be the inheritance of a past that was not well experienced, a sort of unfinished business. The interpretations of the retrogradation may seem negative or excessive to you. However, you may relate to a scenario that you have often and repeatedly experienced... as if you underwent several setbacks that all have the same cause. Until the day you become aware of it and you can free yourself from it! Through the slow integration of these planetary energies, you will be able to overcome your difficulties and to pay your karmic debt. Actually, each retrograde planet highlights an opportunity for evolution. Nothing can be achieved without the will to grow spiritually and to defeat your own demons.

The karma associated with Saturn may border on self-censorship: during your childhood, particularly, you were doubtful of your abilities and your talents. You had a propensity to put yourself in a no-win situation and to under-estimate yourself. Obstacles abound: taboos and prohibitions of all kind slow down your evolution. Little by little, you learn to re-evaluate your possibilities and to gain more self-confidence. Your personal rigour then turns out to be constructive: you are not destabilized by life ordeals and you practice a self-discipline that favours steady evolution. Although your path may be steep, it is nonetheless safe.

Uranus was retrograding on the day of your birth: you have the soul of a rebel and your behaviour may

often be tyrannical or extremist. Your manner has brought you setbacks. You lack the flexibility that spares you the pain of forcing your ways through events. The danger may be that you get trapped into rigid patterns and into personal logics incompatible with others'. This is precisely what your life's lesson is about: as years go by, your judgments are more qualified and your attitudes become less cut-and-dried, less stubborn. You must lose the essentially individualistic character of your childhood and be more open to other people's ideas and problems. In other words, a path of love. Without losing your remarkable resolution, you must practice some form of renunciation and be sensitive to various logics that constitute the wealth of your social life.

Neptune retrograding concerns spirituality. You may have expressed early in life a few reluctances about the subtle world of faith. You may have ignored destiny's signs and winks and you preferred to stick to your certainties, to a rigorous and objective control of your life. You dread your own aspirations and you readily trust others': this causes a lack of autonomy and the feeling that you may not receive as much as you give. However, several delusions teach you that you must relativize your calculating and methodical attitude and open up to the irrationality of love in order to find an inner and more spiritual progression. Embracing the invisible is a process that unfolds as years and experiences go by. Your own generosity increases as you become aware of your entourage's generosity.

Pluto retrograde suggests power issues and mishandled relations: for you, everything comes down to power struggles, submission and domination, Machiavellian manoeuvres, including within your couple... The results are complex behaviours and an obsession for the power to influence people. Yet, life teaches that you must simplify your relations and adopt more transparent attitudes and healthier desires... As years go by, you will tend towards more simplicity and you will slowly discover that human energy can, and must, be at the service of the good, or of well being, in compliance with our individual progression.

**N.B:** modern astrology attaches less and less importance to the principles of retrograding planets.

## Conclusion

A few remarks are needed here in order to allow you to fully take advantage of your astrological portrait: firstly, do not forget that a birth chart is also a photograph of the sky at birth and a structure that not only contains the personality's characteristics, but also its potential evolution.

We all know that, in real life, people begin to know themselves when they are in their forties, or even later. Likewise, several traits of character in a portrait may seem surprising: in most cases, it means that such features are not yet developed.

Some personalities reveal themselves late in life, whereas others are more precocious. It must be remembered that psychological structures are in a state of continuous evolution because they are influenced by unfolding events and gradual maturity. We can never underline strongly enough the "mobile" nature of the personality, throughout a lifetime.

On the other hand, it is difficult to discriminate what is "already present" at this moment in your life when you are reading your chart's interpretation, from what will appear later in the logic of your evolution: you must sort out all the pieces of information provided and, in most cases, you will see that your astrological portrait is helpful for your endeavours to know yourself better.

Finally, several readings of an astrological portrait are usually necessary in order to absorb all its different meanings and to evaluate the relevance of each character trait.

In any case, better self-knowledge obviously contributes to faster personal blossoming, and it is undoubtedly one of astrology's major roles: contributing to know oneself better, in order to improve more rapidly, to deal with one's weaknesses and to avoid its drawbacks, and to take advantage of one's assets as efficiently as possible.

---