



Alicia Silverstone's  
Astrological Portrait



## Alicia Silverstone's Astrological Portrait



<b>Introduction</b>	<b>2</b>
<b>Your Planets, Houses, Aspects, and Natal Chart</b>	<b>4</b>
<b>Preamble</b>	<b>7</b>
<b>Your Planetary Repartitions</b>	<b>8</b>
<b>Your Dominant Modes and Elements</b>	<b>9</b>
<b>Your Dominants: Planets, Signs and Houses</b>	<b>10</b>
<b>Your Style, Behaviour, and Peculiarities</b>	<b>15</b>
<b>Your Sensitivity</b>	<b>20</b>
<b>Your Affectivity</b>	<b>22</b>
<b>The Way You Take Action and Your Sexuality</b>	<b>24</b>
<b>Your Intellect and Your Communication Style</b>	<b>25</b>
<b>Your Goals, Motivations, Career, and Destiny</b>	<b>26</b>
<b>Your Assets and Your Part of Joviality</b>	<b>28</b>
<b>Your Serious Side</b>	<b>29</b>
<b>A Few Special Points</b>	<b>29</b>
<b>Your Isolated Planets</b>	<b>31</b>
<b>Annex 1: Your Minor Dominants</b>	<b>32</b>
<b>Annex 2: Karmic Study</b>	<b>36</b>
<b>Conclusion</b>	<b>38</b>



# Alicia Silverstone's Astrological Portrait

## Introduction

To fully benefit from this portrait, we suggest that you read its introduction and its preamble carefully, and then that to take the time to soak up the interpretations of each chapter. Given the large number of texts, which mirrors the human being's complexity, you may need to go through the contents several times, so as to get a good grasp of their meaning and to know yourself better. This will reward your patience.

The purpose of this report is to describe your psychological portrait and to highlight the most fundamental features on the personal area. The report begins with the analysis of your planetary dominants and outlines your personality's general traits before going into further detail. Minor dominants are analysed at the end of Annex 1, for purposes of clarity. Your report then delineates the various facets of your personality:

In general, even when relationships are not involved, we express ourselves and we feel according to our character and our personal motivations: this is indicated by the Ascendant and the Sun sign which both give details on the way we function. They shed a tremendously important light which allows to figure out your personality. Here, we describe your Sun sign (your inner self), your Ascendant (your behaviour as seen by others), and the ruler of the Ascendant (interesting additional pieces of information about the style of your personality). These descriptions alone cover nearly a third or a half of your psychological signature, depending on your natal chart characteristics.

Then, we address your sensitivity, or in other words, the way you receive things and how you express your emotions ; it works as a constant filter for all your exchanges, even when it becomes a more secondary element in your amorous relationship, because at that moment, affectivity prevails. Sensitivity is the way you perceive things, it is your radar, your daily mood, and at the same time, it indicates how you react to your entourage, on a daily basis. It is what others immediately see of you. In the second paragraph, we explain in which areas of life your sensitivity and your emotions are strongest, therefore, where you are most vulnerable.

After this, it is your affectivity, the way you love and how you charm, that comes into play as soon as you fall in love: the first part indicates its basic structure or its main form. The second part describes the areas where it is best expressed and how you display it, according to your personality.

A third fundamental area deals with your mode of action and your sexuality: how you behave, how you manage to obtain what you want, what kind of desires you have. There are twelve possibilities, very

different from one another. The study discloses the specific one that applies to you. In the second paragraph, we explain in which life areas you may most efficiently take advantage of your capacity for action and for conquest.

Your ways of communicating and of thinking are obviously among the major elements that must be integrated into the delineation and the description of your personality. Indeed, they influence your general behaviour and may modify or enhance the image your project (for instance, extraversion may “compensate” a weak affectivity, but a huge number of cases are possible). An additional chapter indicates the favourite areas where you enjoy communicating, thinking and meeting with people.

Besides, we analyze an even more personal aspect that is important to define and understand what may occur within your couple: each of us have a centre of interest, a privileged manner to be fulfilled or to achieve our destiny; this main motivation is indicated by the positions of your Sun and your chart ruler in the astrological houses and we provide you with its detailed description.

A natal chart contains the potential for specific fulfilment and a whole range of assets, protections and qualities. How does the lucky factor manifest in your personality? In which area can you best exploit your qualities? The answers are precisely revealed to you in this chapter.

On the other hand, we all feel in us a part of vulnerability, doubts and fears. How does this part of solemnity or serious side play out? How is it possible to handle it in order to evolve and to get rid of useless elements? All this information is provided to you in these two paragraphs.

Then, you can discover three additional traits of your personality that must be considered as secondary ones. They deal with your predispositions, which means that they need to be triggered by external events because they are not influenced by your will; let's call it a part of fate. Please, bear in mind that your destiny can unfold only in accordance with what you are: therefore, even if they belong to your more unconscious self, these characteristics are parts of you, definitely.

The karmic chart complements the psychological portrait or natal chart. It is based on the positions of the Lunar Nodes, the Black Moon, and the Part of Fortune. These elements of the chart, sometimes referred to as fictitious points, provide information about the spiritual meaning of your destiny. Owing to the fact that we all have in us acquired knowledge and the urge to go on a quest, our life is an evolutionary journey... However, these texts must be read with great caution: this is the reason why you will find this analysis in the Annex 2 of your report.

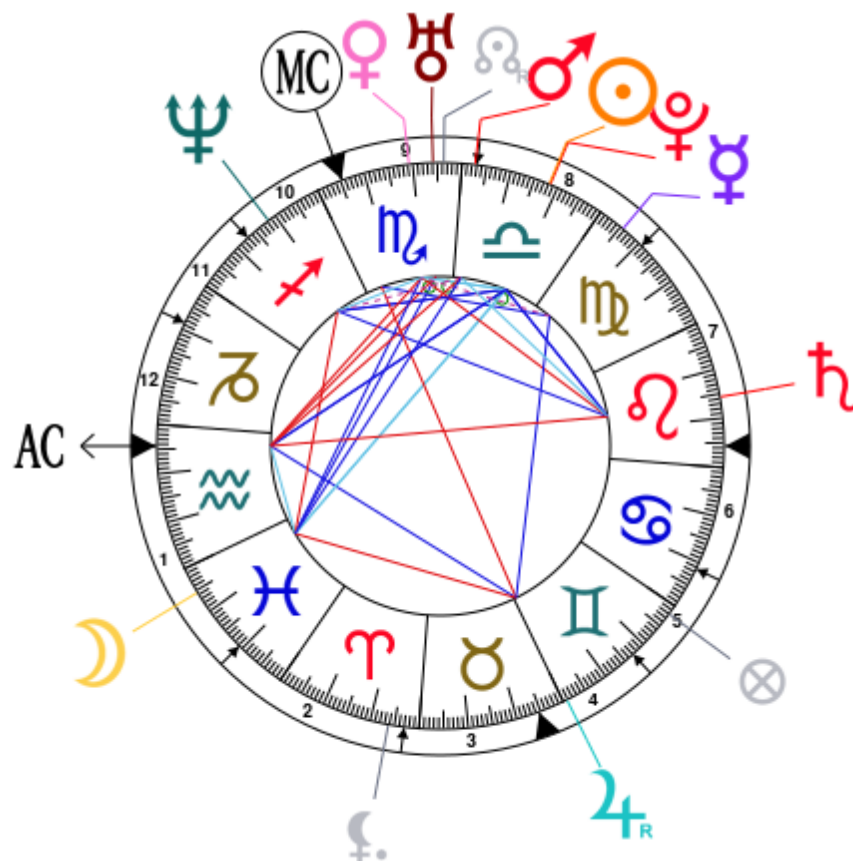


# Your Planets, Houses, Aspects, and Natal Chart

Alicia Silverstone, born October 4, 1976, at 03:44 PM, San Francisco (San Francisco), California [122.25W ; 37.46N ; 7W00]

Natal Planets			In House	Natal Houses (Placidus)		
☉ Sun	11°50'	♎ Libra	House 8	House 1	4°22'	♒ Aquarius
☾ Moon	5°29'	♓ Pisces	House 1	House 2	19°15'	♓ Pisces
☿ Mercury	24°22'	♍ Virgo	House 8	House 3	27°00'	♈ Aries
♀ Venus	10°44'	♏ Scorpio	House 9	House 4	24°41'	♉ Taurus
♂ Mars	27°22'	♎ Libra	House 9	House 5	17°06'	♊ Gemini
♃ Jupiter	0°49' R	♊ Gemini	House 4	House 6	8°39'	♋ Cancer
♄ Saturn	14°20'	♌ Leo	House 7	House 7	4°22'	♌ Leo
♅ Uranus	5°54'	♏ Scorpio	House 9	House 8	19°15'	♍ Virgo
♆ Neptune	11°41'	♐ Sagittarius	House 10	House 9	27°00'	♎ Libra
♇ Pluto	11°36'	♎ Libra	House 8	House 10	24°41'	♏ Scorpio
♁ Node	3°41' R	♏ Scorpio	House 9	House 11	17°06'	♐ Sagittarius
♇ Lilith	23°46'	♈ Aries	House 2	House 12	8°39'	♑ Capricorn
AS AS	4°22'	♒ Aquarius				
MC MC	24°41'	♏ Scorpio				

In keeping with the common practice, we consider that a planet posited within 1 degree of the next house belongs to that house. We allow an orb of 2 degrees for the ASC and the MC.



## List of Your Active Planetary Aspects

Please find below the list of all the active inter-aspects which are interpreted in this report, in addition to your planets in sign, in house, and all your planetary dominants. Since the aspects between slow-moving planets are of a collective nature, they are not displayed, in compliance with our interpretation rules.

- ★★★★★ Sun bi-quintile Moon, orb -0° 2'
- ★★★★★ Sun semi-sextile Venus, orb -1° 05'
- ★★★★★ Sun sextile Saturn, orb -2° 3'
- ★★★★★ Sun sextile Neptune, orb -0° 08'
- ★★★★★ Sun conjunction Pluto, orb 0° 13'
- ★★★★★ Sun trine Ascendant, orb -7° 27'
- ★★★★★ Moon trine Venus, orb -5° 15'
- ★★★★★ Moon trine Mars, orb 8° 07'
- ★★★☆☆ Moon square Jupiter, orb -4° 39'
- ★★★★★ Moon trine Uranus, orb -0° 24'
- ★★★☆☆ Moon square Neptune, orb -6° 12'
- ★★★★★ Moon bi-quintile Pluto, orb -0° 07'
- ★★★★★ Moon semi-sextile Ascendant, orb 1° 07'
- ★★★☆☆ Mercury semi-square Venus, orb 1° 22'
- ★★★★★ Mercury trine Jupiter, orb -6° 27'
- ★★★★★ Mercury sextile Midheaven, orb 0° 19'
- ★★★☆☆ Venus square Saturn, orb -3° 35'
- ★★★★★ Venus conjunction Uranus, orb 4° 5'
- ★★★★★ Venus semi-sextile Neptune, orb 0° 57'
- ★★★★★ Venus semi-sextile Pluto, orb -0° 52'
- ★★★☆☆ Venus square Ascendant, orb -6° 22'
- ★★★★★ Mars quintile Saturn, orb 1° 01'
- ★★★★★ Mars conjunction Uranus, orb 8° 31'
- ★★★☆☆ Mars semi-square Neptune, orb -0° 4'
- ★★★☆☆ Mars square Ascendant, orb 6° 59'
- ★★★★★ Jupiter trine Ascendant, orb -3° 32'
- ★★★★★ Jupiter opposite Midheaven, orb -6° 08'
- ★★★★★ Saturn opposite Ascendant, orb -9° 58'
- ★★★☆☆ Uranus square Ascendant, orb -1° 32'
- ★★★★★ Pluto trine Ascendant, orb -7° 14'

## Meaning of Stars

Stars indicate the strength of the aspects. Two solid coloured stars (there are half-stars also), mean that the aspect is powerful enough to be noticed at the first reading.

We strongly advise that you read the paragraphs displaying less than two stars later on, after you have absorbed the full import of the other texts.

The yellow colour indicates a soothing and conciliating aspect, and the red colour, a dynamic and tense aspect. The red aspects enable you to evolve, to take action, and to learn to turn your "weaknesses" into assets through your life experiences. The yellow aspects are innate strengths on which you rely in order to grow better with the former...

## Preamble

When interpreting a natal chart, the best method is to start gradually from general features to specific ones. Thus, there is usually a plan to be followed, from the overall analysis of the chart and its structure, to the description of its different character traits.

In the first part, an overall analysis of the chart enables us to figure out the personality's main features and to emphasize several points that are confirmed or not in the detailed analysis: in any case, those general traits are taken into account. Human personality is an infinitely intricate entity and describing it is a complex task. Claiming to rapidly summarize it is illusory, although it does not mean that it is an impossible challenge. It is essential to read a natal chart several times in order to absorb all its different meanings and to grasp all this complexity. But the exercise is worthwhile.

In brief, a natal chart is composed of ten planets: two luminaries, the Sun and the Moon, three fast-moving or individual planets, Mercury, Venus and Mars, two slow-moving planets, Jupiter and Saturn, and three very slow-moving planets, Uranus, Neptune and Pluto. Additional secondary elements are: the Lunar Nodes, the Dark Moon or Lilith, Chiron and other minor objects. They are all posited on the Zodiac wheel consisting of twelve signs, from Aries to Pisces, and divided into twelve astrological houses.

The first step is to evaluate the importance of each planet. This is what we call identifying the dominant planets. This process obeys rules that depend on the astrologer's sensitivity and experience but it also has precise and steady bases: thus, we can take into account the parameters of a planet's activity (the number of active aspects a planet forms, the importance of each aspect according to its nature and its exactness), angularity parameters; (proximity to the four angles, Ascendant, Midheaven, Descendant and Imum Coeli or Nadir, all of them being evaluated numerically, according to the kind of angle and the planet-angle distance) and quality parameters (rulership, exaltation, exile and fall). Finally, other criteria such as the rulership of the Ascendant and the Midheaven etc. are important.

These different criteria allow a planet to be highlighted and lead to useful conclusions when interpreting the chart.

The overall chart analysis begins with the observation of three sorts of planetary distributions in the chart: Eastern or Western hemisphere, Northern or Southern hemisphere, and quadrants (North-eastern, North-western, South-eastern and South-western). These three distributions give a general tone in terms of introversion and extraversion, willpower, sociability, and behavioural predispositions.

Then, there are three additional distributions: elements (called triplicity since there are three groups of signs for each one) - Fire, Air, Earth and Water - corresponding to a character typology, modality (or quadruplicity with four groups of signs for each one) - Cardinal, Fixed and Mutable - and polarity (Yin and Yang).

There are three types of dominants: dominant planets, dominant signs and dominant houses. The novice thinks astrology means only "to be Aries" or sometimes, for example, "to be Aries Ascendant Virgo". It is actually far more complex. Although the Sun and the Ascendant alone may reveal a large part of the character - approximately a third or a half of your psychological signature, a person is neither "just the Sun" (called the sign) nor just "the first house" (the Ascendant). Thus, a particular planet's influence



may be significantly increased; a particular sign or house may contain a group of planets that will bring nuances and sometimes weaken the role of the Ascendant, of the Sun sign etc.

Lastly, there are two other criteria: accentuations (angular, succedent and cadent) which are a classification of astrological houses and types of decanates that are occupied (each sign is divided into three decanates of ten degrees each). They provide some additional informations.

These general character traits must not be taken literally; they are, somehow, preparing for the chart reading. They allow to understand the second part of the analysis, which is more detailed and precise. It focuses on every area of the personality and provides a synthesis of all the above-mentioned parameters according to sound hierarchical rules.

As explained in the introduction of your Psychological Portrait report, minor dominants are analysed at the end of Annex 1, for purposes of clarity.

## Your Planetary Repartitions

Each quadrant is a combination of the four hemispheres of your birth chart and relates to a character typology. The Southern hemisphere – the top of your chart, around the Midheaven – is associated with extraversion, action, and public life, whereas the Northern hemisphere prompts to introversion, reflexion, and private life. The Eastern hemisphere – the left part, around the Ascendant – is linked to your ego and your willpower, whereas the Western hemisphere indicates how other people influence you, and how flexible you are when you make a decision.

### Your Four Quadrants

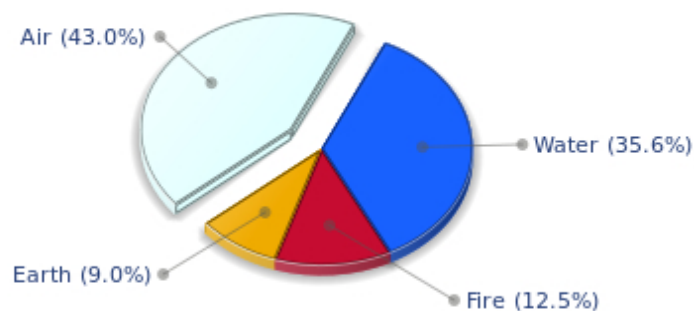


Alicia Silverstone, the diurnal South-western quadrant, consisting of the 7th, 8th and 9th houses, prevails in your chart: this sector brings about a thirst for communication and sometimes, a need to take risks in your dealings with others. Relations are a factor of your evolution and your transformation, which you accept serenely. Indeed, what matters to you is the movement and the energy that link you to others and that make you gain more awareness. A kind of rebellion or a desire to get away from it all is rooted in you.

## Your Dominant Modes and Elements

Alicia Silverstone, here are the graphs of your Elements and Modes, based on planets' position and angles in the twelve signs:

### Your Four Elements



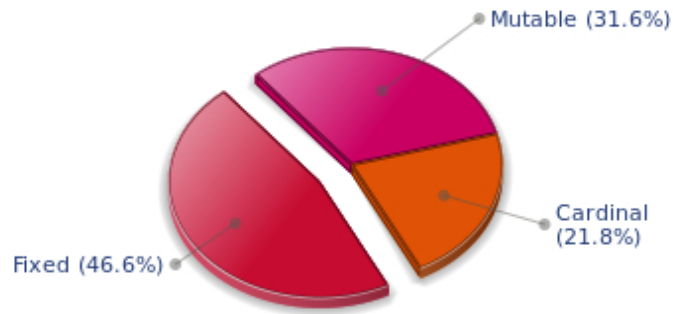
Cheers for communication and mobility, Alicia Silverstone! The predominance of Air signs in your chart favours and amplifies your taste for relations and for all kinds of short trips, whether real (travels) or symbolic (new ideas, mind speculations). You gain in flexibility and adaptability what you lose in self-assertion or in pragmatism.

The predominance of Water signs indicates high sensitivity and elevation through feelings, Alicia Silverstone. Your heart and your emotions are your driving forces, and you can't do anything on Earth if you don't feel a strong affective charge (as a matter of fact, the word "feeling" is essential in your psychology). You need to love in order to understand, and to feel in order to take action, to the detriment of a certain vulnerability against which you should learn to fight.

Earth qualities are under-represented in your chart, with only 8.97% instead of the average 25%. Deficiency in Earth may indicate that you have no interest in material and concrete values. It is likely that you live too much in your heart or in your mind, or even in your enthusiasm! The fact remains that you may end up in tricky situations, due to your lack of good sense or forethought: material life is unavoidable even if you are rather idealistic, dreamy, or easily content. You must tackle concrete life necessities, for fear of... being forced to cope with them, later, in much more unpleasant ways!

The twelve zodiacal signs are split up into three groups or modes, called quadruplicities, a learned word meaning only that these three groups include four signs. The Cardinal, Fixed and Mutable modes are more or less represented in your natal chart, depending on planets' positions and importance, and on angles in the twelve signs.

## Your Modes



The Fixed mode corresponds to a majority of elements in your chart, Alicia Silverstone, and represents the desire for security and durability: you are able to concretely appreciate a situation and its stability. You definitely prefer to play the role of a loyal, obstinate and hard-working person, rather than to try new and risky experiences - beware, however, not to confuse obstinacy with intransigence. You structure, cement, and strengthen everything you find on your way: it is your nature, although you are not especially interested in swiftness: slow and steady...

## Your Dominants: Planets, Signs and Houses

The issue of dominant planets has existed since the mists of time in astrology: how nice it would be if a person could be described with a few words and one or several planets that would represent their character, without having to analyse such elements as rulerships, angularities, houses, etc!

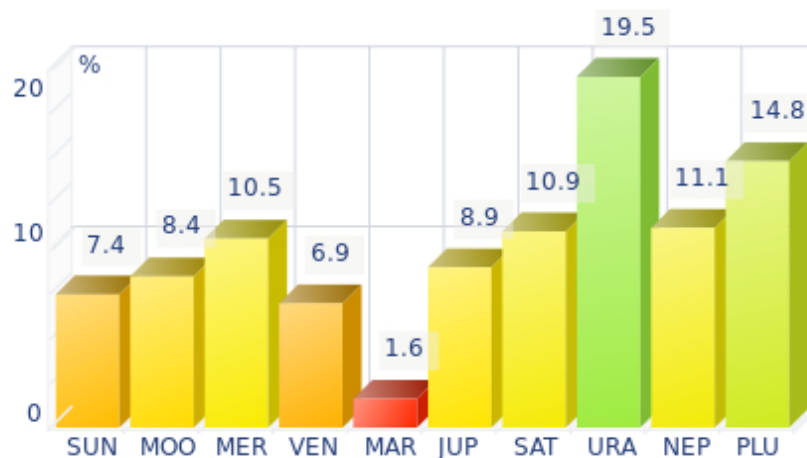
The ten planets - the Sun throughout Pluto - are a bit like ten characters in a role-play, each one has its own personality, its own way of acting, its own strengths and weaknesses. They actually represent a classification into ten distinct personalities, and astrologers have always tried to associate one or several dominant planets to a natal chart as well as dominant signs and houses.

Indeed, it is quite the same situation with signs and houses. If planets symbolize characters, signs represent hues - the mental, emotional and physical structures of an individual. The sign in which a planet is posited is like a character whose features are modified according to the place where he lives. In a chart, there are usually one, two or three highlighted signs that allow to rapidly describe its owner.

Regarding astrological houses, the principle is even simpler: the twelve houses correspond to twelve fields of life, and planets tenanted any given house increase that house's importance and highlight all relevant life departments: it may be marriage, work, friendship etc.

Alicia Silverstone, here is the evaluation diagramme for your planets:

## Your Dominant Planets



The three planets that are most highlighted in your chart are Uranus, Pluto and Neptune.

Uranus among your dominant planets: just like Neptune and Pluto, Uranian typology is less clearly defined than the so-called classical seven planets that are visible to the naked eye, from the Sun to Saturn. However, it is possible to associate your Uranian nature with a few clear characteristics: Uranus rhymes with independence, freedom, originality, or even rebelliousness and marginality, when things go wrong...

Uranus is Mercury's higher octave and as such, he borrows some of its traits of character; namely, a tendency to intellectualize situations and emotions with affective detachment, or at least jagged affectivity.

Therefore, you are certainly a passionate woman who is on the lookout for any kind of action or revolutionary idea, and you are keen on new things. Uranians are never predictable, and it is especially when they are believed to be stable and well settled that... they change everything - their life, partner, and job! In fact, you are allergic to any kind of routine, although avoiding it must give way to many risks.

With Pluto as a dominant planet in your chart, you are a magnetic and mighty predator, like the Scorpio sign ruled by this planet, who needs to exert pressure on others in order to "test" them. You are always ready to evolve, to risk destruction for reconstruction - including your own - to live more intensely whilst imposing your secret authority on things and on people you encounter.

You may come across as wicked, cruel or too authoritarian, but actually you only follow your instinct, you sound people out, and you like to exert your domination simply because your vital energy is too powerful to remain inside. You are inclined to be passionate, with hidden motivations. You are sometimes misunderstood but one of your great Plutonian assets is to go successfully through each life ordeal with ever growing strength.

With Neptune as one of your three dominant planets, you are a secretive and ambiguous person, often confused or unclear about your own motivations! Indeed, you are endowed with unlimited imagination and inspiration, as well as with an extreme sensibility that may turn you into a psychic or a clairvoyant. On the other hand, your impressionability is such that you may have difficulties in separating what is

concrete and solid from illusions or dreams.

A mystic, a visionary or a poetess, you daydream, like any Neptunian, and you see what few people only can see, all of this being shrouded in aesthetic mists when you are fired with enthusiasm.

A boundless, infinity-loving woman like you is inevitably likely to be more vulnerable and easily hurt because of your acute perception of events. In such cases, you are hit full in the face, and you may sink into gloomy daydreamings and dark melancholy.

That said, this mysterious aura definitely gives you an indefinable charm in the eyes of your close friends who are often fascinated by your unique ability to feel and to see what ordinary people can never see!

### Your Dominant Signs



In your natal chart, the three most important signs, delineated according to the above-mentioned criteria, are, in decreasing order of strength, Scorpio, Libra and Aquarius. They are often prominent because your Ascendant and your Sun are posited there. However, it is not always the case: it may be because they are occupied by a cluster of planets, by a planet near an angle other than the Midheaven and the Ascendant, or because two or three planets are very active and form numerous aspects from these signs. Therefore, you partly take on the three signs' characteristics, which are somehow superimposed on your natal chart, and all the more so if any of the signs in question is highlighted.

With Scorpio as a dominant sign, you are a strong and astute person, complicated and passionate, sometimes destructive and intolerant, but strong-willed, tough and daring, sometimes bordering on aggressive. So many qualities and dangers combined in one person! Obviously, this often results in a natural selection of people around you: those who stand up to you or admire you and those who can't bear you anymore! But that is precisely what you want. You are what you are and you are not going to transform yourself just to please. You are too proud and you never dread confrontations, although your way of fighting is secret, as is your nature that, mysteriously enough, you are so reluctant to reveal even to your close friends who will never understand you. That said... what a hellish charm you have!

With Libra as a dominant sign in your birth chart, you love to please, to charm, and to be likeable. Moreover, you are naturally inclined towards tolerance and moderation, as well as elegance and tact, as if you were meant to please! Of course, you always find malcontents who criticize your lack of authenticity or of courage and your half-heartedness, but your aim is to be liked, and in this field, you are an



unrivalled champion!

Aquarius is one of the most important signs in your natal chart: it endows your personality - at least one of its facets - with originality, to the point of eccentricity in spite of a sometimes distant and humane side. Likeable and impassive at the same time, you are a paradoxical woman, very hard to define because the two planets Uranus and Saturn blend their qualities to create the so complicated and endearing sign that inspires your character. Saturn's seriousness and impassivity is added to Uranus' rebellion, talent, individualism, charisma, extravagance, and unpredictability! One of your main characteristics is that you never open up on a personal basis, but you tend to do so easily in public. You are actually quite strange. Sexy and charming in public, despite your nice and sociable character, you could frustrate many of your admirers in private because of your impossibility to show deep and warm affection, emotions, tears... But appearance and reality are two different things anyway - you are a kind of a genius, or you have at least a tremendous charm with this sign. You have many friends and an active social life. If you are detached in your love life - only in this aspect, since the rest of chart will confirm it or not - this is no big deal!

### Your Dominant Houses



Houses 8, 9 and 1 are the most tenanted ones in your natal chart. To compute their strength, planets and angles are weighed according to various astrological criteria such as swiftness, activity, angularity, rulership etc. From the analysis of the most tenanted Houses, the Astrologer deduces the fields of activity that are most relevant to you, be it because of what you are experiencing, or what you may experience in the future, or because of your deep inner motivations.

Your 8th house is very highlighted: it is the most complex house of the Zodiac. It symbolizes above all passion and transformation, which often go hand in hand. Indeed, you have a tendency to experience everything to the bitter end, and you overstep propriety borders because you want to understand everything, even what is... forbidden. This house relates to complex spheres such as sexuality, possessions and dispossessions that don't depend on you (inheritances, donations, sudden financial losses), death too - not yours in particular, so, don't worry! - and understanding of hidden or occult things: here are the fields that affect you generally, because you are naturally interested in them or because life gets you involved in spite of yourself.

Your 9th house being one of your most tenanted house, or at least emphasized, travels and faraway places play a major role for you: travels may take place in a symbolic sense, namely mind speculations or conceptions about political matters, philosophy, religion or spirituality, or in the literal sense, such as

real long distance travels by plane. You may also spend a part of your life far from home, etc. You are driven by a kind of rebelliousness, which urges you to explore the Unknown; it may also be the call of the adventure. Besides, if the rest of your chart concurs, you may be considered as a real draught, often up hill and down dale, constantly on the lookout for exciting discoveries and new, enchanting horizons.

With a dominant 1st house, your magnetism is powerful, and your individuality as well as your willpower are out of the ordinary. You are a determined, strong-willed, and assertive person, with this relative criterion at least.

It is likely that you never go unnoticed when you are in a crowd or in a reunion: an important 1st house suggests that you are a charismatic person with above average vital energy, especially if the Sun is present in this sector.

Your personal interests are always important and you never forget them, which doesn't mean that you are self-centered, but only that you behave according to what is in harmony with your deep nature!

## Your Style, Behaviour, and Peculiarities

What is commonly known as "sign" indicates the position of the Sun in the Zodiac. The Sun highlights all the characteristics of the sign he tenants. According to astrology traditional rules, these characteristics are all the more pure and exact when the Sun is strong in the sign, or when the sign is particularly highlighted within the chart. Here, we indicate the pure characteristics of the sign but you must bear in mind that they may only shed a light on a particular aspect of your personality. Indeed, the sole sign of the Sun, or of the Ascendant, can never describe an astrological chart because it depends on the degree of strength of the said sign in your chart.

Another important point must be underlined. Contrary to the Ascendant, which clearly describes your appearance, your vitality, your physical constitution, your spontaneous behaviour and the image you project, your Sun sign describes your inner self, which you may not completely be aware of, and which may emerge gradually as you mature: it is about your inner personality that you reveal only to the members of your entourage whom you trust. The Sun sign is likely to be the final form of your personality, once it has evolved in line with the energies of the other parts of your chart, the beginning of which is seen in the Ascendant, your external "bark".

The Ascendant is one of the major components of your natal chart. It is the zodiacal sign that rises in the East at the very moment of your birth. To calculate it, it is therefore necessary to know your exact time of birth.

It provides with a wealth of information on your personality. It is one of the key features that allows the analysis of several parts of you, such as your appearance, your character as it is initially perceived and your immediate behaviour. It describes the external aspect of your personality which you always display, but it also describes your physical constitution in the long-term, in other words, your health.

Please be aware that, in spite of the importance of the Ascendant, the accuracy of its description depends on how strongly highlighted it is in your natal chart. We use the entire set of astrological rules to assess the strength of the Ascendant. In most cases, the Ascendant is as revealing as your "sign", i.e., the sign where the Sun is posited at the time of birth.

## You were born under the sign of Libra and your Ascendant is in Aquarius

Before broaching the details of the meaning of your Sun and your Ascendant, as a preamble, we offer a brief generic interpretation of their combination in your chart:

Actually, who are you? In the best case, you are easily accepted and appreciated, and in the worst case, you shock people. In all circumstances, you remain a riddle, and foreigners and friends alike are unable to really understand your personality. Both Libra and Aquarius are Air signs which symbolise communication and intellectual process. Under their influence, you tend to roam from one relationship to another, without being taken advantage of. Owing to your Aquarius Ascendant, you come across as a friendly and freedom-loving person when you meet people for the first time. It is only when they get to know you better that you show Libra's charming and sociable facet. Although Aquarius can sometimes display curt and eccentric manners, you always keep your self-control because you feel quite uncomfortable with big demonstrations of affection or emotional outpourings. Your entrenched need for

independence clashes with your desire to establish caring and deep ties with the person you love. Indeed, your rebel airs do not match your tormented and refined sensitivity...

### **You were born with the Sun in Libra**

Psychologically speaking, your nature is sanguine and communicative or nervous and introverted, depending on who prevails, either Venus, the principle of harmony, extraversion, desire to seduce, easy and airy communication, or Saturn, the principle of rigour, introversion, self-control, concentration and meditation. Unless Saturn is very strong in the rest of the chart, Libra is very delicate and charming. She easily adjusts in society, particularly with her perpetual search of compromise. It is the reason why you may seem to be hesitant and weak. You do not dare to insist or to assert your views: you prefer to intervene as an agent for harmony, of rally and equity, even to the detriment of your self-assertion. You loathe violence and you strive with all your heart to pacify, to smooth things over, and to adjust to the situation with flexibility and grace.

Since you are born under this sign, you are sentimental, charming, courteous, delicate, refined, loyal, pacifist, fair, distinguished, light, romantic, cultured, airy, likeable, spruce, perfectionist, caring, gentle, quiet, tidy, social, artist, with strong aesthetic tastes, tolerant, lenient, sociable, seductive, elegant, kind, respectful, balanced, but you may also be hesitant, weak, wavering, selfish, fragile, indecisive, timid, indolent, cold or even insensitive.

In love, Madam, you are the seductress of the Zodiac: love is your major area of concern and to please is the very expression of your whole being. You are so charming, so considerate, you multiply your conquests with lightness and you are on top form while you are awaiting the love of your lifetime. You have every chance to find him because all your talents are oriented towards communication and meeting with people who, invariably, think that you are charming and distinguished, pleasant and educated, with a lot of good taste and that you manage to make your interlocutor feel comfortable.

As you are exceedingly demanding, it is very likely that you will be disappointed by many lovers and admirers, however, you will never be tired of starting over again your nice soul mate hunting.

You are mildly narcissistic and you have an instinctive need to charm and to see the effects of your seductive powers. The danger is that you may be selfish or that your frenzied need for compliments cannot be fulfilled by your partner who is not able to praise you as well as you expect him to...

You are more sentimental and aesthetics-oriented than Taurus, who is more physical or sexual. The relationship with your partner must include many intellectual exchanges and a deep closeness regarding your artistic tastes or your daily lifestyle.

In general, you will marry only once, in spite of your capacity to charm and to have romantic encounters.

## **Your Ascendant is in Aquarius**

In the sentimental sphere, you are particularly sensitive to the values of friendship, in the sense that you see yourself as a link within a chain, certainly a different and original one, but with no will to flatter your ego or to individually assert yourself. On the contrary, your aim is to immerge yourself in your friendly relations and to participate in projects and ideals of the whole human community.

As you are born under this sign, you are idealistic, altruistic, detached, independent, original, surprising, gifted, contradictory, innovative, humanistic, likeable, friendly, self-confident, impassive, quiet, intuitive, creative, charitable, elusive, disconcerting, generous, tolerant, paradoxical, and you cannot stand any kind of constraint. But you may also be marginal, resigned, distant, utopian, maladjusted, eccentric and cold.

In love, Madam, you are the inquiring sign of the Zodiac. You are cerebral and lively, always on the look-out for novelty or for anything amazing.

You are often more in love with love than you are in love with your partner. You are surprising and unpredictable, now passionate and using your imaginative and mental powers to idealize your relationship and your partner, now cold, suddenly detached and impersonal because you are annoyed by subtle elements that you, and only you, can understand.

You do not stand disappointment and you display great cleverness when you want to suddenly break up when your partner least expects you to do so.

In order to be able to charm you, one must be exceptional, amazing, disconcerting and one must accept to grant you total freedom and independence. Under those conditions only, will you be able to have a long-lasting, stable yet eventful, surprising and harmonious relationship with your chosen partner. Once trust and confidence settle in, you will be fulfilled and you will be hardly recognizable.

The life span of your couple depends mainly on your common tastes: ideally, you should live with a man who actually is your friend and your lover, continuously shifting from one role to the other according to circumstances, and who, at the same time, provides you with a much needed mental stimulation, as well as with warm love.

## **The ruler of your chart is in Scorpio**

The ruler of the Ascendant, also referred to as the chart ruler, brings a few interesting nuances to the meanings provided by the Sun and the Ascendant. The sign in which the ruler of the Ascendant is posited fine-tunes the style of personality described by the Sun and the Ascendant. It may strengthen it if the sign is identical to either of them.

The ruler of the Ascendant, Alicia Silverstone, is Uranus. It is posited in the sign of Scorpio and makes you appreciate mysteries and the unknown. You need to understand, to solve riddles, and to take action behind the scenes, perhaps so as to be even more efficient. Your criticising skill is a weapon, but it may also backfire on you, just like your sometimes excessive obstinacy.



## Aspects to your Ascendant

Several planets form an aspect with your Ascendant, Alicia Silverstone. Therefore, in their specific way, they modify your behaviour and your personality, which do not take on the pure characteristics of your Aquarius Ascendant only, but which are a blend of its characteristics with those of the said aspects.

### ★★★★★ Uranus square Ascendant, orb -1° 32'

This dissonance of Uranus with your Ascendant endows you with a rebellious, original, and unpredictable side, which gives your behaviour a note of dynamism and nonconformism. Of course, other people are sometimes deeply disconcerted by your attitude which does not fit classical or social standards, and you may suffer its consequences, meaning that you feel misunderstood, incorrectly perceived, and considered as a disturbing free electron, or an untrustworthy person. You must remain true to yourself, but at the same time, you must exercise some caution in order not to fall prey to unpleasant misunderstandings.

### ★★★★★ Jupiter trine Ascendant, orb -3° 32'

Jupiter in soft aspect with your Ascendant naturally endows you with a reassuring, calm, and benevolent side, Alicia Silverstone. You honour your commitments without qualms, and thanks to your heart of gold and your generosity, your behaviour is protective and nice. You like to please other people, and whenever it is possible, you enjoy finding compromise solutions to all problems.

### ★★★★★ Venus square Ascendant, orb -6° 22'

In certain circumstances, Alicia Silverstone, you tend to adopt an attitude that is not necessarily in line with your real emotions. This discrepancy between your behaviour and your feelings, caused by Venus, may disconcert the people you mix with. Have self-confidence, don't be too pushy or... withdrawn, and forget your fears. Then, people can have a better perception of your personality, and you can harvest the fruits of your efforts.

### ★★★★★ Pluto trine Ascendant, orb -7° 14'

Pluto, the planet of instinct and secret, is in soft aspect with your Ascendant, Alicia Silverstone. It endows you with exceptional lucidity, which enables you to behave in society in an appropriate, though slightly scathing and domineering way. You exploit your nose and your magnetism, and you do so very successfully!

### ★★★★★ Mars square Ascendant, orb 6° 59'

When Mars is in dissonance with the Ascendant, Alicia Silverstone, in some particular circumstances, it may translate into hastiness, and even hostility on your part, which your entourage may not understand. You have audacity galore, but it is up to you to show alertness, so that you don't come across as a short-tempered person unable of self-control.

### ★★★★★ Sun trine Ascendant, orb -7° 27'

Your will is fuelled by a strong energy, Alicia Silverstone. It enables you to take quick decisions which totally match your personal ethics. Thanks to this good harmony between the Sun and your Ascendant, you feel rather good about yourself, and your inner self perfectly matches the image you are willing to show!

★★★★★ Saturn opposite Ascendant, orb -9° 58'

Saturn is in opposition to your Ascendant, Alicia Silverstone. It means that at the same time, he also is in conjunction with your Descendant, the angle which symbolises your rapport with other people. This configuration endows your behaviour with a tone of solemnity and seriousness that some people may claim to be ... overwhelming! Therefore, you must absolutely be aware of this configuration, and force yourself to a more laid-back attitude, especially in your romantic relationships or in your marriage. This type of relationships precisely requires that you open up if you want to succeed, whilst solemn Saturn often curbs your spontaneity. If you are fully aware of this fact, you can turn your sober features into strength, and your often belated marriage can be a great achievement!

★★★★★ Moon semi-sextile Ascendant, orb 1° 07'

Your instinct seldom misleads you, as far as your external appearance is concerned, thanks to the Moon's soft aspect with your Ascendant, Alicia Silverstone. You keep your emotions under rather good control, in instinctive and smooth ways.

## Your Sensitivity

Your sensitivity is all on edge, Alicia Silverstone, and your emotions so deep, your imagination, so lively, that you are often found in the sweet realm of dreams. You create your own fantastical world with entangled fragments of current reality, romantic souvenirs and hidden hopes. Your receptiveness is so intense that it may border on mediumship or, more disturbing and rare, you may have hallucinations. Your character fluctuates according to the stimulation of the moment but in general, you are a nice person, full of gentleness and romanticism, always ready to understand and to dedicate yourself. You have real healing powers, would it be only through your ability to instinctively understand other people's sufferings. Your affective structures can be likened to a roving radar. You are vulnerable, hurt by the slightest aggression and easily influenced because you are unable to step back from people and events; therefore, you may start to be doubtful and lose the self-confidence that you so badly need to progress.

You are very sensitive, emotional and intuitive, Alicia Silverstone. You actually perceive what is said about you with shrewd acuteness, which is convenient, but it also makes you especially vulnerable. People's opinion is important to you, even though their influence may be unconsciously perceived.

You are concerned about your public image, you are nevertheless whimsical, even capricious and moody: you switch from laughter to tears so easily. You have a special relationship with crowds, probably because you can easily become popular owing to your lovable and moving personality.

Your imagination is so strong that it may become tricky: it is preferable that you be straightforward because the slightest insinuations can create beautiful - or unfortunate - stories that may take you very far away from reality, in spite of your flair and well-developed intuition!

### ★★★★★ Moon trine Uranus, orb -0° 24'

This harmonious Moon-Uranus aspect indicates that your well being depends on the original quality of your charm and on new-ness. You are not influenced by prevailing trends and fashion. You have a personal view of what a balancing private life should be. You enjoy unexpected situations, even extravagant ones. But if you feel that your living environment hampers your freedom, you suddenly change your attitudes and your habits. Independence is your true realm. You may show an exceptional inflexibility when your intimate life moves away from the patterns you need, deep down. Your entourage must get used to your demands and to the values you are determined to keep with all your might and on which you are uncompromising. This determination does not allow for a laid-back attitude, or an indolence that so often causes degradations. You keep your own daily rhythms under control.

### ★★★☆☆ Moon square Jupiter, orb -4° 39'

When this aspect is not well integrated, there is a tendency to conceal your true nature and to cheat on your true self. Appearance, emphasis and games hide the essence of your aspirations and may trouble your intimate life. Despite your apparent joviality, it is often difficult for you to live in conformity with your inner demands. Actually, it is difficult for you to reconcile your social life with your private life. The former excludes the latter. To properly integrate this aspect, you must learn to harmonize your external attitudes (social and professional ones) with your daily rhythms. It implies that, when you are in a trustworthy situation such as your family or your home, you accept to behave differently from when you are in a larger context, exposed to social stress. You must neither ignore them, nor should you favour them.

★★★★★ Moon trine Venus, orb -5° 15'

The harmonious Moon-Venus aspect is an element of intimate balance that favours sensual and affective fulfilment. The search of well being includes all kinds of emotions and feelings. You love, you enjoy life in simple ways and you arouse your entourage's affection. The persons belonging to your inner circle are also objects of desire and pleasure. Tenderness and love are probably one and only thing: you are moved by the gestures of affection provided to you and by the daily acts, which strengthen two persons' mutual attachment. Whereas other people dread routine, in your case on the contrary, it increases your amorous feelings. You loathe all kinds of violence, particularly in your intimate life. The danger of this planetary configuration may be your constant changes of mood: whims are often on the agenda... and your will is quite weak. One last point: this aspect is frequently found in the charts of people with an aesthetic or artistic sensitivity.

★★★★★ Moon bi-quintile Pluto, orb -0° 07'

You are a riddle for people... and for yourself. This harmonious Moon-Pluto aspect arouses your desire to understand and to express elements hidden in your unconsciousness. You are interested in the occult, in laws that rule beings and things in the dark. You like to pull strings and to manipulate situations without people's knowledge in order to remain mysterious. You feel fine when you are not in the limelight, but you intervene in the dark, with subtlety. Your intimate behaviour reveals the distance that you strive to keep in order to protect your inner life. You gladly cultivate the angel of the bizarre, even in your life habits and in your daily rhythms.

★★★★★ Moon square Neptune, orb -6° 12'

This Moon-Neptune dissonance wonderfully turns on the poetic soul, the exhilaration of feelings and dreams... and disturbs your practical life, as well as the management of contingencies. You do not lack inspiration but your reasons of living may be beyond your entourage's understanding! Bohemian life is pleasant but it is probable that you experience muddled situations. Your aims are noble and your intentions are very good. But you may not have the will to turn them into reality. It is important that you are wary of artificial paradises: escaping in the imaginary is not necessarily the best solution for problem solving. You are in search of an inaccessible tranquillity and you tend to procrastinate chores. Nevertheless, facts remain present and you may see that non-interventionism can only increase your difficulties. You must put an end to this vicious let-go circle. This does not imply that you have to forsake your dreams or to repress your very rich sensitivity.

★★★★★ Sun bi-quintile Moon, orb -0° 2'

This aspect is a strong homogeneity factor: the image you project is in conformity with your real nature and does not upset your basic balance. This is probably the cause of your feeling at ease, your consistent behaviour and your determination to remain your true self, regardless of external pressures and whatever is expected from you. At best, your will and your sensitivity are in harmony, your unconscious abilities are mobilized and controlled by your conscious will, with no imbalance. However, it is important to avoid the traps of self-satisfaction that would be harmful to your real exchanges and would lock you up in comfortable and rigid schemes. It is possible to remain natural and yet, not be content with the sole well being of those who never cheat themselves.

★★★★★ Moon trine Mars, orb 8° 07'

Your vivid imagination goes hand in hand with you desire to make your dream come true and to fight, so as to remain true to yourself. You easily mobilize your energy and your resources. This harmonic Moon-Mars aspect indicates the will to keep your intimate balance under all circumstances. You thrive

in action; you court danger, particularly when your regular environment is endangered. In the private sphere, you exhibit complete straightforwardness. This planetary configuration allows you to quickly get back on your feet within a new context. You adjust well to unprecedented situations. Your capacity to integrate events rapidly can only increase your adaptation abilities.

## Your Affectivity

In your chart, the Sun is in Libra and Venus, in Scorpio. Your solar and Venusian signs indicate very complex affective behaviours... The Sun in Libra is marked by a strong association principle, whereas Venus in Scorpio prompts to resistance, even to refusal. You may alternately display these two antinomical attitudes: you expect moral and affective support from your relationship and you dream of fusion and harmony. You think that you are able to share everything, including your values and your models. However, your desires are very specific and your inclinations are distinctive. Besides, you may not appreciate an amorous situation exempt of antagonism. Indeed, you know that love also lives on those differences, which allow mutual enrichment, and you do not let your passion be dulled by the blissful harmony you dream of! In the long run, your attitudes are more selective and your manner becomes more clear-cut. The danger is that you may too quickly adhere to your partner's school of thought because you do not want to hurt him but, as a consequence, you arouse feelings of flatness and tensions. Therefore, it is important that, against all the odds, you fully respect your ideal of fusion and your desire for an intense relationship. When this configuration is well integrated, it allows you to balance two incompatible tendencies, as well as to adhere to your partner's views without renouncing your own, and to calm things down without smothering the excitement of the hearts.

You cannot dissociate love from passion, Alicia Silverstone. Your feelings are immediate, imperious, intense, and it is absolutely impossible for you to think of an amorous relationship without fusion, without the irresistible desire to know everything about your partner: emotions, feelings, sexuality, everything must be experienced in a possessive, absolute and unrestricted way. Actually, your feelings are as complex as they are deep. You seldom love, but when you do, a burning ardour and its torrid, violent frolics consume your couple. It is obvious that such powerful feelings may lead to jealousy and absolute exclusivity, almost bordering on the will to control your partner. If your relationship is genuine, all is fine. But if it is not the case, there are real dangers of shared wounds within your couple; it is hard to reconcile passion with tranquillity and it is clear that for you, sentimental serenity involves a partner who is either as complex as you and who instinctively understands you, or who is complementary, and as calm and steady as your impulses are intense and deep.

Alicia Silverstone, the choice is yours: love encountered while travelling abroad, or just love for travels and focusing your feelings upon this ideal of evasion towards far-off lands? Or may be both. In any case, you often tend to fall in love, and even to get married, with a person of foreign origins. Exoticism and difference mysteriously appeal to you and there is little you can do against it. Early in life, you have a craving for space and for changes, particularly regarding your feelings: there is not a single chance that you are content with habits or that you refuse any new and exciting experience full of unusual and unknown features. You are always on the move and you feel so great when you finally find yourself in a ship at the other end of the world or somewhere in an airport, with all your senses stimulated, ready to be seduced by the unusual charm of the person whom you will meet and who will not resemble you. Your feelings are vast and generous, sometimes even sublimated and idealized because you so adamantly refuse any limitation. You have an undying thirst for higher knowledge that can only be gained in the



field of spirituality or, in the literal sense, through roaming about remote lands, or also analogically, through interacting with culturally different people who have so much to teach you. Your feelings are coloured with the distinctive nobleness and long-term vision that characterize broad-minded persons who do not look at things with an ego-centered and simplistic glance. It is true that, seen from an airplane, the authenticity of all things important stands out finally with more acute sharpness...

★★★★☆ Venus conjunction Uranus, orb 4° 5'

Your charm lies in the originality of your approach to love and in your uncompromising attitudes. Your motto? Freedom of love, whatever the price! Should your sentimental life become dull, you find a solution: you are romantic and you reinvent your couple's life, you give a new and unexpected momentum to your emotions. You create the kind sharpness that contributes to your exceptional affective life. You do not fear love at first sight or blazing passions. On the affective plane, you know where you are heading for, whom you love ... or love not. There is an indisputable intransigence. The heart impulses are irrevocable and implacable. You dream of a sentimental life that fulfils your aspirations and you use all possible means to achieve your ideal. Even though you may have to make the necessary sacrifices.

★★★☆☆ Venus square Saturn, orb -3° 35'

This Venus-Saturn dissonance indicates a demanding, complex and often challenged affectivity. You are wondering about the meanings of love, pleasure and emotions. Your passions take an absolute character right away. No compromise, no sham must stain your sentimental life. In such a context, doubts abound. This aspect prompts you to review the roots of your affectivity, so as to find the assurance you lack and to soothe your dormant sentimental anxiety. Love is an eternal and endless quest. Because you are doubtful of the affection people have for you, you may never feel that you are really loved. Your affective behaviour reveals your uncertainties: tests and challenges follow one another until, eventually, you are certain to experience a love that meets your demands. It is obvious that on the sentimental area, you are not looking for the easy way out.

★★★★☆ Venus semi-sextile Pluto, orb -0° 52'

You exercise exceptional clear-sightedness in love. Your passions are subtle, deep, although disconcerting and imperceptible to the outsider. You display no gullibility and you keep your distance. This is part of your charm. You detect what is really at stake in your couple's relationship and in your sentimental attitude. You drive the boat of your sensitivity without falling victim to mirages and affective traps. The only danger is that you may be too calculating. As you try to totally control love and to constantly pull the strings, you may lose the ingenuity and innocence which are necessary to nurture a relationship. You give proofs of your love in a very personal way and you never hesitate to use paradoxes to preserve the authenticity of your relations. You can anticipate problems and prevent difficulties.

★★★☆☆ Mercury semi-square Venus, orb 1° 22'

If this Mercury-Venus aspect is experienced on the dissonant mode, stability may not be the forte of your affective life: when desire loses its fine edge, the need to discover new forms of emotions and feelings leads you to multiply the number of relations, sometimes to the detriment of the former ones. Again and again, you keep on looking for the object of your desire without ever being satisfied by persons you know too well. Your natural likes and dislikes can also bias the relationship games in which you indulge. A subtle tug-of-war between your feelings and your need for novelty, between the reasons of the heart and those of the mind... You must learn to master these ambivalences, to reconcile desire and thirst for the unknown. If you accept to pay some attention, the person who naturally attracts you can captivate you in

a sustainable way. Then, love becomes an inexhaustible source of interest.

★★★★★ Venus semi-sextile Neptune, orb 0° 57'

Your sentimental life unfolds like a strange dream. Love is too delicate to be tamed or controlled. You follow your heart impulses in an idyllic ambiance, far from reality's ordinary constraints, far from conventions and conformism. You exude a particular charm, discreet and subtle. But your affectivity may be disconcerting. You are very sensitive to marks of affection and tenderness, although you are aware that love cannot be bought or won. What is meant to be will be and it is impossible to know the hows and the whys behind a prevailing harmony. The obvious danger is that you may refuse to make any effort in such conditions. Living as a couple must feel natural and you do not need to objectively build the foundations of a relationship. You are an idealist and you dream of an affective paradise, which may be too good to be true...

★★★★★ Sun semi-sextile Venus, orb -1° 05'

This aspect gives a strong concern about the image you project. You pay a lot of attention to the impression you make and to the charm you exude. You need to know that you can rely on your seductive capacity and earn the liking of your entourage. What people think is important to you and you try to meet your close friends' expectations. You certainly want to please them, but above all, you need their attention. You are seeking pleasure, esteem and affection. But ideals and desires make up a whole: you can be at your best only with those who naturally attract you and for whom you have an esteem that is independent from facts. Your feelings are a response to your quest of the absolute: the persons you find likeable are adopted. Other people are rejected irrevocably! Your character is very affective and it constitutes an asset in many circumstances. Your capacity to seduce, to gain support and to earn esteem is above average. The only danger may be that you abide by the current fashion and trend more than by your own motivations and by what is essential, for the sake of appearances.

## The Way You Take Action and Your Sexuality

No one can say that you are particularly aggressive, Alicia Silverstone! Actually, it takes a great deal for you to become able to express your anger because you belong to the wavering type and you are not prone to risk-taking; you loathe violence and you would rather not intervene than start a conflict. Moderation and the happy medium in all things are your favourites. One of the only areas that makes you wage war is injustice, whether you are the one who is stricken or whether it is someone who is helpless. In this particular field, as in that of sexuality, you are not impulsive and you appreciate it very much when your partner shows the way, preferably with much serenity and gentleness. Actually, the form and characteristics of your sexuality depend on the rest of your personality.

You may focus all your energy into your ideal, Alicia Silverstone, be it political, religious, ethical, moral or, under its highest form, spiritual. Several areas may be involved simultaneously.

Taking action with all your heart may reveal a definite taste for dialectics, and you will not rest until you are understood and you have earned other people's adherence. You exchange with keen pleasure. You embrace the causes enumerated above, at the exception of spirituality, as it could never be a subject for proselytism.

You are able to instinctively identify the most important element in life from a remote distance and,

inevitably, it does not belong to the material plane. You are not too interested in working for the concrete realm. You aim at longer-term objectives... and even further. Your energy is deliberately, fiercely and boldly poured into the realms of the thought and the soul. You chose them all, some of them may be more futile than others, but they are all oriented towards abstraction, concepts, some of them being often more essential.

Your nature may also be more fact-oriented. In that case, you feel that the enrichment of your soul is particularly favoured when you deal with persons and environments that are alien to you: you express your capacity of action through frequent and long-distance travels so as to progress in your personal quest for knowledge.

★★★★★ Mars conjunction Uranus, orb 8° 31'

This harmonious Mars-Uranus aspect indicates an unshakable determination and the will to further your ideas through drastic, sudden, sometimes dramatic actions. You bend the string of your bow before taking action and you hit at the right time. The secret of your feats? An excellent command of your blitz actions. You concoct your plans in the dark, and then you move to an efficient and quick execution step that is often dazzling. You do not have the temperament of a loser. When you face an ordeal, you focus your entire energy and will on your unique aim: victory over any obstacle. This planetary configuration may lead to dangerous, even heroic actions. The danger is that you may over-estimate your strength or your chances for success.

★★★★★ Mars semi-square Neptune, orb -0° 4'

You behave like a bohemian person and you are led by an ideal that you may not control. Your passions are undoubtedly sincere. However, you may target wrong objectives. You engage on hopeless struggles and meaningless confrontations. It is important that you watch out for fanaticisms from all sides and that you remain clear-sighted in the face of your exalted feelings. Your sincerity may work wonders when you champion lost causes. The most difficult thing is probably to keep your exacerbated sensitivity under control. Because you are deeply moved by facts, because you are sensitive to injustices and to the world's woes more than the average people, you embark on incessant battles, at the risk of undergoing a few delusions, on occasions.

★★★★★ Mars quintile Saturn, orb 1° 01'

Persistent action always bears fruit eventually. All that is needed is patience... A quality you have, undoubtedly. As confrontations become unavoidable, you show strong persistence and indisputable perseverance. Potential obstacles are more stimulating to you than they are discouraging. You are naturally fit for effort and for confronting realities and facts. You quickly overcome difficulties and you respond to crises in an efficient and considerate manner. You are enduring. You handle events with rigour and precision. These are valuable qualities nowadays, for they often come with the capacity to undertake adventurous experiences and to take limited risks!

## Your Intellect and Your Communication Style

Your capacities for logic and analysis are very good, Alicia Silverstone, and you evaluate each and every aspect of a given situation in objective and critical ways. You are industrious, methodical, with a lot of nervous energy, you pay attention to details and you may spend lots of time in intellectual and painstaking works. Although you are articulate, you do not like to be in the forefront and you prefer to

work in team rather than to take initiatives: you feel less anxious when you know what is exactly expected from you and what you need to do. You tackle problems with rationalism and you distrust imagination and intuition. You love letters as much as you love figures. Your caustic humour may destabilize your entourage who may prefer that you were less demanding and more demonstrative. Please bear in mind that not everything can be kept under control...

You need to understand, to explore the unknown, to shed light on mysteries and to immerse yourself into the hidden fields of the unconscious or the afterlife, actually, into whatever escapes you, Alicia Silverstone. You are not content with what seems obvious because you are on Earth to evolve and not to stagnate or remain in a mindless state and a lack of understanding.

Interestingly enough, astrology connects the spheres of death, after-life and mysteries with the spheres of other people's possessions, investments, inheritances etc. This analogy probably comes from the fact that in those two fields, everything remains inaccessible right away. It might be the reason why such mysterious topics are so attractive to you.

Your investigative mind enables you to easily express your feelings and to explain the inner mechanisms of your whole being, almost as if your own self was a specimen to study, without modesty and with the only motivation to go as far and as deeply as possible.

★★★★★ Mercury trine Jupiter, orb  $-6^{\circ} 27'$

You display strong abilities for adaptation, social insertion and various learning capacities. You are credited with an acute sense of relations, probably because you can speak other people's language. You easily assimilate the most varied settings and your qualities are acknowledged. Your attitude and the words you use have the power to seduce and to convince your entourage. Diplomacy is an asset in your game. You are fit for negotiation and you seek compromise solutions. The only danger may be that sometimes, you too readily accept agreements that turn out to be less positive than foreseen, after a while. This is the other side of the coin for your exceptional flexibility and your unquestionable tact.

## Your Goals, Motivations, Career, and Destiny

### Your Sun is posited in the 8th House

One thing is certain, Alicia Silverstone, your motivations cannot be easily figured out because this configuration is quite special and complex. Everything pertaining to the realm of emotions is deepened. You have a tendency to infuse passion in nearly everything in life and it will translate differently, according to your temperament and other characteristics of your chart.

Several common elements are noted however. There is a predisposition for essential matters connected to life and death and to great mysteries that go beyond daily life. You need to understand, to drill and to always delve deeper. You are inhabited by some sort of desire for transcendence, maybe because you feel everything with deep intensity: therefore, you are more vulnerable because events hit you full in the face and you unconsciously understand that, if you manage to decipher how and why things appear, you will become tougher. But there is another reason to it. Your curiosity is continuously on the alert and you are amazed by apparently insignificant facts that stir up the chain of causes and effects and lead you towards the more essential matters that are knocking at the door of your soul.

Your concerns and your inclination may take you into such various fields as psychoanalysis, amassing knowledge in mystics, religion, occultism or spirituality (desire for transcendence and immediate access to an upstream reality). What is hidden mesmerizes you and you spend lots of time polishing your lucidity, as if progressing ahead and evolving further were the materialized forms of your life's challenge.

On a more terrestrial plane, here are the areas that are particularly important to you: sexuality, probably because of its transcendence and its hidden nature; death, either because you experienced a loss with a big impact on your evolution or on your destiny, or only because you are interested in this topic; finance, investments, inheritances, speculations, in other words, any financial area other than those of money earned by yourself, expenses, and the way you use your patrimony and your resources.

Your entire being strives towards assertion as you win over ordeals or over life hardships: nothing stimulates you better, nothing makes you evolve more than these critical periods of life when, on the brink of the abyss, you feel with maximal intensity all the choices that are offered to you. During such periods, you always manage to give of your best, you transform yourself and you come out enriched and more lucid: crisis and metamorphosis. This pattern suits you best. You want to move fast, always faster and further, because you intensely understand that daily reality is important only through its authentic and hidden contents. To discover the reality, your only tool is self-awareness development. However, do not take too many risks and do not systematically enter into the eye of the storm as you may be badly and repeatedly shaken up.

You lost your father quite early, literally or figuratively (sometimes, you find him again after an ordeal), although, paradoxically, he played a major role. If the theory is borne out, it is only an additional step towards sublimation and the overcoming of certain ordeals towards the road to wisdom. You, a mystic? Yes, in your own way, of course!

### **The ruler of your chart is in the 9th House**

The ruler of the Ascendant, also referred to as the chart ruler as explained in a previous chapter, is also posited in one of the twelve Houses of the chart. Just like the Sun in his House, the ruler of the Ascendant provides certain abilities, or it makes you appreciate more keenly certain areas of life.

The ruler of your chart is in the 9th House, Alicia Silverstone. This position often gives you a strong taste for travels and foreign matters, whether through frequent real trips, or symbolically, through the pleasure to devote yourself to noble subjects: politics, religion, spirituality, or sciences. You feel the constant need to reach a higher level and to be on the move.

### **Aspects influencing your ambitions**

Regarding your destiny or your career, the following aspects of your natal chart allow to fine-tune what has just been said above:

★★★★★ Sun conjunction Pluto, orb 0° 13'

This harmonious Sun-Pluto aspect indicates an exemplary clear-sighted mind. Without destabilizing your appearances or your personality mask, Pluto makes you aware of your subjective and questionable character, as well as of your manner. You never take yourself completely seriously. You have a good grasp of human nature's complex games, without gullibility, without excessive simplification. Because



you can perceive hidden elements underlying any situation better than anyone else, you are acknowledged as perspicacious. This aspect allows you to distance yourself from difficult circumstances and to remain impassive when you must overcome pitfalls.

★★★★☆ Sun sextile Neptune, orb -0° 08'

This harmonious Sun-Neptune aspect indicates a highly developed intuition and clear-sightedness and sometimes, a sixth sense. Mental images or information drawn from the unconsciousness impress your mind. What was only a muddled feeling turns into certainty and deep conviction. You do not necessarily need to justify your attitudes: you take a decision because you feel that you have to do so, although you may not control the underlying logics. The danger is that you may follow fanciful or adventurous roads. Beliefs you cannot explain may prove wrong or over-optimistic. However, your intuition is seldom misleading. One last comment: there is often a keen curiosity for the « bizarre » and the paranormal with this planetary aspect.

★★★★☆ Mercury sextile Midheaven, orb 0° 19'

Mercury in soft aspect to your Midheaven enables you to easily communicate with your entourage and to climb up the social ladder, Alicia Silverstone. Your strategy is often good, and you correctly think about your interests. Do not change anything!

★★★★☆ Jupiter opposite Midheaven, orb -6° 08'

As Jupiter, the most beneficial planet of the Zodiac, makes an opposition to your Midheaven, he also makes a conjunction with the opposite angle, the Imum Coeli which represents your family, your home, and your roots. Therefore, it is not correct to talk about a dissonance, strictly speaking. It does not indicate that your social ascent is slowed down, at least, not directly. It is more that you have a certain amount of good luck in the opposite area, meaning your domestic and family spheres. You feel more comfortable in your "home, sweet home" than in society, and you are more sociable or more blossoming when you feel in security with your close friends, in your territory. Indirectly, you may feel that there is a discrepancy between the success of your career and the fulfilment of your family life.

★★★★☆ Sun sextile Saturn, orb -2° 3'

This aspect indicates a firm and discreet will, a rigorous and objective character. You are clear-sighted, particularly in difficult situations. You enjoy the moments of calm and solitude during which you can review your life at will. Your judgments are enduring and often extremist. You are outraged by injustice and inconsistency. When a problem arises, you do not take the easy way out with short-term solutions, on the contrary, you strive to solve the issue thoroughly. Better than anyone else, you challenge yourself, you review your choices and your attitudes. This is the reason why you are capable of handling crises and of overcoming any obstacle that requires an in-depth and relevant response. You may lack spontaneity but your behaviour reveals your wisdom. When you are facing an issue, you put forward the good question, to others, but also to yourself.

## Your Assets and Your Part of Joviality

With the planet of Greater Fortune in this sign, Alicia Silverstone, your abilities to communicate and your curiosity are considerably strengthened. You are articulate, you have an eloquent pen, and you multiply your centres of interest. Better than anyone, you can handle numerous different intellectual pursuits simultaneously and you increase the number of your friendly and professional contacts. Short and



frequent trips are favoured. Just be cautious not to spread yourself too thin.

Oh! The family! It is of utmost importance to you, Alicia Silverstone, and you are happy there. Besides, the planet of Greater Fortune here gives you all the assets you need to successfully build a harmonious, secure and comfortable home. Your private life is favoured. You feel naturally attracted by the areas dealing with soil, stones and real estates.

The planet Jupiter symbolizes expansion, broadness and generosity. Jupiter is associated with the functions of synthesis, enthusiasm and optimism. In your natal chart, his house position is more important than his sign position because, like Saturn, Uranus, Neptune and Pluto, he is a slow planet. Many people born in the same period have Jupiter in the same sign. This is the reason why the sign occupied here is less meaningful than when it is occupied by the so-called fast planets, i.e. the Sun, the Moon, Mercury, Venus and Mars. Therefore, some caution is to be exercised as you read what follows.

Jupiter in Gemini increases your mental creativity, your imagination and your capacity for adaptation. The outcomes may not be seen externally but this configuration usually develops your sense of contact: when Gemini's well-known frivolousness and scattering meet with Jupiter's synthesizing mind and tidiness, it can only endow you with the best assets for your communication and intellectual pursuits.

## Your Serious Side

Your ambitions and your self-perception are marked with some degree of detachment. You become less frivolous and more detached from individual and superficial values as time goes by.

Alicia Silverstone, you have a natural reluctance to grant your trust: as a consequence, associations, union, and sharing with others are difficult for you. On the bright side, you are endowed with caution and wisdom.

You ought to tone down this attitude because it may turn against you in the long run. You may marry late or with a person much older than you. This does not imply unhappiness! It is in your interest to open up to others, although it is hard for you to do so. At the end of the day, your harvest benefits your destiny and your evolution alike.

The planet Saturn symbolizes contraction, effort, time, limitation and concentration. Saturn eliminates anything that is not authentic, sooner or later. It is impossible to cheat him as he gives an irresistible desire to form a coherent whole with oneself, in responsible and wise ways. He is the great purifier. He represents our limitations but also our truth. In your natal chart, the house position where Saturn is posited is more important than his sign position because, like Jupiter, Uranus, Neptune and Pluto, he is a slow planet. Many people born in the same period have Saturn in the same sign. This is the reason why the sign occupied here is less meaningful than when it is occupied by the so-called fast planets, i.e. the Sun, the Moon, Mercury, Venus and Mars. Therefore, some caution is to be exercised as you read what follows.

Saturn in Leo tends to detach you from pleasure and leisure and gives you a serious and responsible nature. These are good qualities if Saturn is not badly aspected, even if your inclination for having fun is not particularly increased by this planetary configuration...

## **A Few Special Points**

### **Your Uniqueness and Your Utopias**

Your ideas and revolutionary concepts, at odds with what really exists, make you appear as a pioneer in your area. In your concrete life, several important trips are significantly involved in major turning points. Your instinctive need for strangeness, as well as your thirst for independence, must be given a positive outlet.

Sometimes, your positions are original to the point that they become marginal, and your dyed-in-the-wool desire for expatriation exposes you to undergo reversals that are as explosive as unexpected. More than anyone else, you must guard against fanaticism or the systematic exploration of remote and dangerous lands, even though the call of the unknown or of exoticism is deeply rooted in you and you find it hard not to respond!

On a more symbolic plane, you are generally interested in abstract topics which are out of the ordinary such as metaphysics, religions, sociology, philosophy, etc.

### **Your Inspiration and Your Illusions**

This configuration indicates a significant probability that your professional destiny – even your general destiny – is linked to collective movements that are beyond you. They may constitute good opportunities to earn your marshal's baton.

Your certainties may be influenced by trends or by your osmosis with collective ideas, often because you are very sensitive to the "spirit of the times". The other side of the coin is that you may become only a representation of a collective ideal, or its victim, and be exposed to scandal or deception.

You have good predispositions for music, comedy and for anything that allows you to quench your thirst for emotions and fusion with the external world and with an audience.

### **Your Passion and Your Authority**

In the sexuality area, you are very creative and you fear nothing. You are willing to experience your fantasies to the very end because you need to understand life's most secretive and mysterious aspects.

You are usually interested in occultism and in all topics that go beyond the everyday life framework: death and after-death, parapsychical researches, etc. You have a strong sixth sense and you intuitively understand at once things that are usually hidden and private.

Your material life may be disrupted by inheritances and gains stemming from happy speculations. In the most negative cases, you undergo huge losses that are difficult to understand. In all cases, these upheavals are meant to transform your personality and your approach to life.

## Your Isolated Planets

In general, the ten planets of the chart are connected to other planets by major or minor astrological aspects. It is owing to those ties that the planets' energies can manifest in the chart owner's personality and play out within safeguards according to a specific tonality.

It seldom happens that in a natal chart, a planet is totally disconnected from the nine other planets.

Astrologers have observed that when such a case occurs, the person feels the energy of the unaspected planet in quite a singular way, very jerky and powerful at the same time. Thus, for instance, the famed astrologer Jean-Baptiste Morin de Villefranche wrote that "an unaspected planet heralds that something strange or extraordinary will take place regarding the meanings of the house in which the said planet is posited" (source : l'astrologie selon Morin).

Rules for detecting an unaspected planet: among all the testimonies that we have reviewed to this day, based on our experience, we tend to agree with American astrologer Janis Huntley who accepts seven aspects, which involve the zodiacal twelve sections of 30 degrees. The aspects to be considered are the conjunction (0 degree, cooperation or tension), the semi-sextile (30 degrees), the sextile and the trine (60 and 120 degrees respectively, aspects of cooperation), the square and the opposition (90 and 180 degrees respectively, tensed aspects), and the quincunx (150 degrees, slightly tensed). In this detection, the chart's angles are not taken into account.

In any case, it is important to remember that an isolated planet clearly expresses its influence when it is a personal planet. Thus, when the Sun, the Moon, Mercury, Venus, or Mars is isolated, it is certain that the effects described by Jean-Baptiste Morin de Villefranche will become manifest. As for Jupiter, Saturn, Uranus, Neptune, and Pluto, one must be cautious because the volume of cases documented is not yet large enough.

Your chart has no isolated planet, and this particular case does not apply to you.

## Annex 1: Your Minor Dominants

The five following dominants are less significant than those described at the beginning of your report. They may not be strongly felt. In some cases, they add several minor details to the analysis of your character, but they are rather for curiosity purposes. It is not necessary to take them into account when you first read your portrait.

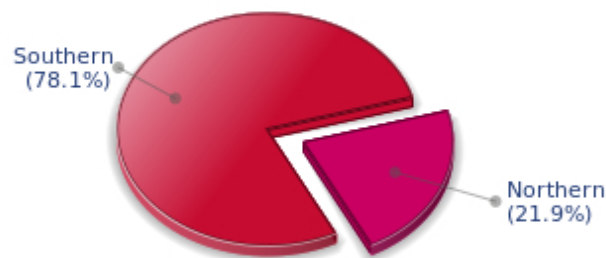
### Your Planetary Repartitions: Northern, Southern, Eastern and Western Hemispheres

The axis linking the 1st house's cuspid (the Ascendant) to the 7th house's cuspid - the Descendant - divides the zodiac into two bowls, a superior bowl, in the South, and an inferior bowl in the North. Quoting an expression by the famous American astrologer Rudhyar, the Southern part and the Northern part correspond to two functions: "being" and "doing". Other concepts are also associated with this North and South distribution, such as introversion - Northern hemisphere - and extraversion - Southern hemisphere - being or appearances, inner life or external life, reflection or action, dreaming one's life or living one's dreams, the abstract or the concrete, backstage or limelight.

This is not about determination but about personal inclination: thus, some people will be thrown into public life despite a prominent Northern hemisphere. If this happens, however, it will not be due to their will, their taste or their deep nature. Conversely, a prominent Southern hemisphere will not bring about a famous destiny to its owner, even if he tends to turn the spotlight on himself, or if he looks for a more active life. It is a matter of deep nature and natural inclination. Of course, none of the typologies is "superior" to another.

In your birth chart, Alicia Silverstone, the ten main planets are distributed as follows:

### Your Northern and Southern Hemispheres



Alicia Silverstone, the predominance of planets in the Southern hemisphere prompts you to take action, to draw attention on yourself, and to make your actions and what you have in mind visible to everyone. Sometimes, without giving a single thought to, and to the detriment of, a richer inner life and a deeper and wiser reflection. Action and communication are inevitable in your opinion and you tend to think that the only thing that matters is what is seen! This is not always true, and it is up to you to progress through the development of inner qualities such as meditation, solitude and imagination so as to become stronger.

The birth chart is divided into two other parts, Eastern and Western, by the axis linking the Midheaven to the Imum Coeli.

The Eastern part, on the Ascendant side, shows the person's ego, will, magnetism, and vitality, whereas the Western part, on the Descendant side, symbolizes other people, communication, relationships and their influence, as well as flexibility and adaptability.

Alicia Silverstone, here is the planetary repartition in your Eastern and your Western hemispheres:

### Your Eastern and Western Hemisphere:



The predominance of planets in the Western hemisphere of your chart means that you are quite flexible, capable of empathy, convivial and communicative. An excellent factor for many professional activities or for your social or sentimental life for example.

A definite asset... provided that you are not at the centre of the decisions you must take in your life: you may be tempted to listen to the last person who spoke, and your flexibility won't always get you out of the tight spot. You are therefore advised to learn to decide alone and to cope with the consequences of your actions with courage and without regrets. This attitude will allow you to combine flexibility and action, adaptability and absence of hesitation.

### Your Yin and Yang Polarity

The twelve signs are divided into two polarities, called active or passive, or sometimes masculine and feminine, positive and negative, Yang and Yin. This classification corresponds to two quite distinct tonalities, the first one bringing extraversion, action, self-confidence and dynamism, the second one, introversion, reactivity, reflection and caution. None is superior to the other, each group has its own assets and shortcomings. Odd signs - Aries, Gemini, Leo, Libra, Sagittarius and Aquarius - belong to the first group, whereas even signs - Taurus, Cancer, Virgo, Scorpio, Capricorn and Pisces - belong to the second group.

## Your Yin and Yang Polarity



According to the disposition and qualities of your planets and angles, you are rather influenced by Yang energy, the active polarity, Alicia Silverstone: more concerned about actions than reflection, you sometimes rush without standing back and without the deepness that is needed. However, your spontaneity prompts you to take fresh starts, even after repeated failures caused by your rashness.

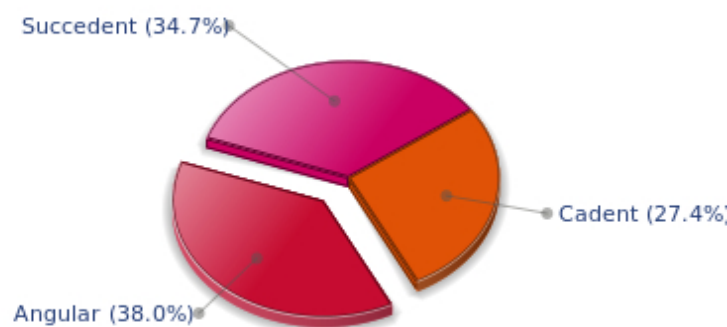
### Your Houses' Accentuations

Houses are split up into three groups: angular, succedent and cadent.

The first ones are the most important ones, the most "noticeable" and energetic houses. They are the 1st, 4th, 7th and 10th houses. Their cuspides correspond to four famous angles: Ascendant for the 1st house, Imum Coeli for the 4th house, Descendant, opposite the Ascendant, for the 7th house and Midheaven for the 10th house, opposite the Imum Coeli.

Planets are evaluated according to a whole set of criteria that includes comprehensive Western astrology rules. At their turn, planets emphasize specific types of houses, signs, repartitions etc., as previously explained.

## Your Houses' Accentuations



Your angular houses, namely, the 1st, 4th, 7th and 10th houses, are very emphasized in your chart, Alicia



Silverstone: according to the Tradition, they are the strongest and most dynamic houses. Should the rest of your chart concur, angular houses suggest that you are an enterprising, energetic and assertive woman. Indeed, angular houses are said to generate impulsions and to give a powerful and domineering personality.

Unusual fates are often linked to a predominance of angular houses, but this is only a partial indication...

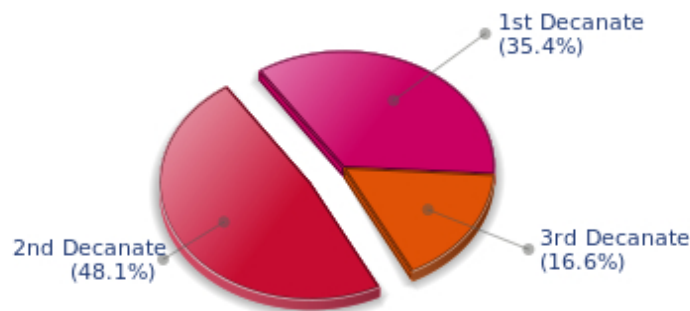
### Your Esoteric Decanates

Each sign contains 30 degrees and can be divided into three equal parts: the decanates. The Tradition indicates that specific meanings can be associated to each of the three decanates. Their sphere of activity is usually limited to the Sun sign, however, it is even more interesting to observe the distribution of all the planets in the chart to get an idea of the respective importance of the three decanates, which can complement the description of the personality.

These meanings must be considered with the greatest caution. Indeed, they are minor characteristics that can only underline other outstanding traits of character.

Traditionally, the first decanate highlights the characteristics of the sign where a planet is located. The two other decanates correspond to sub-dominant planets, depending on the nature of each sign. This system leads to a multiplication of meanings and it is impossible to have a clear understanding: here, we prefer to give only the meaning of one decanate in comparison with the other two, within the birth chart as a whole. Again, the greatest caution is needed with regard to this minor indication as it is not always reliable: it is not essential that you read these texts in the beginning. You can get back to them later on, once you have read more important interpretations

### Your Esoteric Decanates



The second decanate, which means the part between 10° and 20° of any zodiacal sign, prevails in your natal chart, Alicia Silverstone: these 10 zodiacal degrees emphasize logical thought and mental values. Therefore, you may be drawn to some kind of scientific activities, research, writing or any sort of expression where you have to... think a lot.

## Annex 2: Karmic Study

The karmic theme is a good complement to the psychological portrait, or natal chart. This analysis is based on the positions of the Lunar Nodes, the Black Moon and the Part of Fortune: they are also called fictitious points and describe the spiritual purpose of your destiny. Because there is in all of us an experience and a quest, our life is an evolutionary journey... provided that we head towards the right direction, of course! Indian astrologers highly prize the Nodes axis (North Node and South Node). It is the Ariadne's thread that we are invited to follow. The Black Moon indicates the sector where we are most likely to transform or to transcend, whereas the Part of Fortune points out the area where we can easily express our specificity.

### The Lunar Nodes: a spiritual path

Lunar Nodes have their roots in the Indian tradition and they are based on a simple concept: each of us have a mission of their own, here on earth, a destiny, a course. According to the Indian philosophy, life is a school: the nodal axis describes our past experiences (South Node, our karma, our spiritual inheritance or our previous lives), and our aims on earth (North Node, our Dharma, the purpose of our current incarnation). This is the reason why the study of the lunar nodes is called "Karmic astrology". Here, we shall not step into hypothetical past lives. Wherever our current trends may come from, all that really matters is that we become aware of the purpose of our life, its finality and our dharma. We are likely to understand our life purpose around the age of 37, when the Lunar Nodes return to their natal position.

Your life's purpose is related to your disregard for material goods and dispossession. Whether or not you enjoy comfort, a financial or affective capital, someday, you question your assets and you start anew. Of course, you enjoy life's simple joys. The security granted by stable relationships allows you to cope with possible delusions. But life undertakes to remind you that nothing is eternal here below, the wheel keeps on turning and, at any time, one may irrevocably lose what one thought to possess forever. Paradoxically, ordeals and losses make you stronger: as time goes by, you feel freer, more detached from the values of this world and closer to the essential... The spiritual life can't be bothered with the prosperity sought after by ordinary mortals. As you give up the values that you once thought to be indispensable, you gain in terms of lucidity and, eventually, in terms of tranquillity. Your powers and your inner dimension will then impress many people: do not overdo it!

Your destiny hinges on spiritual values. Early in life, you developed relationship abilities and you showed a healthy curious mind. You are insatiable when it comes to exchanging new concepts but you limit your horizon line to tangible and useful facts. As time goes by, you feel the desire to leap further and to discover new territories or different philosophies. You may have a growing interest in metaphysics or in religions, or you may travel, so as to keep up with your desire for evolution. Never mind! What is essential is that you never stagnate and that the vagaries of life do not take precedence over your thinking process or your spiritual growth. You dream of getting rid of everyday constraints and of reaching another dimension of life pertaining to large spaces and to ideals. You need to live intensely, to discover again and again. You long for a better world? The danger is that you may get trapped in illusions and utopias. But life would be so dull without an ideal!

### Lilith or the Dark Moon

The Black Moon is the spark of refusal and distance that is dormant in all of us. Depending on the sign where she is found in your chart, she highlights the desire to transform and to sublimate a part of your life. The Black Moon is unfathomable and mysterious. She gives a different dimension to the sector she

touches. Her manifestations are subtle; nonetheless, she is powerful, implacable, demanding to the extreme... The Black Moon is also called Lilith. She is the inner flame of your heroism and insubordination.

Your refusals are irrevocable: you may show violence when the situation is stuck... When facts hamper your aspirations, when everything does not seem to start moving soon, you tend to force your ways through events, regardless of the price to be paid. Your strengths and your weaknesses stem from all that: you may exercise a misplaced extremism, claiming great causes, whereas order can be restored in the simplest of ways. However, better than anyone else, you know how to maintain the pressure whenever it is needed, when the desire for deep changes takes precedence over submission or abdication.

Your approach to comfort and pleasure is paradoxical: you deeply long for a realm where your senses and your desires can be fulfilled at will. However, you are so demanding that you may refuse the simple joys of life and you prefer an absolute quality of life... an absolute that is often inaccessible, but so thrilling!

### **The Part of Fortune in House**

The Part of Fortune is a very ancient fictitious point that depends on the lunar phase at the time of birth. The astrological house tenanted is particularly strengthened. In your chart, the Part of Fortune is in the 5th house: to you, success means to create, to produce a fruit or a work, or to give birth to a child. Being in this world does not content you; you need "to do", to design, to live hand-to-hand with your surroundings. You are sensitive to power and you want to arouse esteem and admiration in your entourage.

### **Retrograde Planets**

The karmic tradition insists on the issues related to the so-called retrograde planets. They are considered to be the inheritance of a past that was not well experienced, a sort of unfinished business. The interpretations of the retrogradation may seem negative or excessive to you. However, you may relate to a scenario that you have often and repeatedly experienced... as if you underwent several setbacks that all have the same cause. Until the day you become aware of it and you can free yourself from it! Through the slow integration of these planetary energies, you will be able to overcome your difficulties and to pay your karmic debt. Actually, each retrograde planet highlights an opportunity for evolution. Nothing can be achieved without the will to grow spiritually and to defeat your own demons.

With Jupiter retrograding on the day of your birth, the lesson is about grasping the opportunities that are offered to all of us but that some people take advantage of, while others don't. Persons who quickly adjust to circumstances are more likely to achieve their ambitions than those who need to be encouraged to take action. During your childhood, you may not have efficiently responded to life's concrete enticements, leaving other "luckier" people to achieve what you were dreaming of. You preferred to enjoy yourself, here and now, rather than to look for new paths of development or exploration. It is possible that you were not optimistic enough. Enterprising minds were alien to you... Later, you find out that, indeed, you give little importance to the credit of the frenzied expansion praised by the modern world. Your path is not oriented towards personal prestige. With subtlety, you integrate non-material values and you accept well the fact that you missed past opportunities.

N.B: modern astrology attaches less and less importance to the principles of retrograding planets.

## Conclusion

A few remarks are needed here in order to allow you to fully take advantage of your astrological portrait: firstly, do not forget that a birth chart is also a photograph of the sky at birth and a structure that not only contains the personality's characteristics, but also its potential evolution.

We all know that, in real life, people begin to know themselves when they are in their forties, or even later. Likewise, several traits of character in a portrait may seem surprising: in most cases, it means that such features are not yet developed.

Some personalities reveal themselves late in life, whereas others are more precocious. It must be remembered that psychological structures are in a state of continuous evolution because they are influenced by unfolding events and gradual maturity. We can never underline strongly enough the "mobile" nature of the personality, throughout a lifetime.

On the other hand, it is difficult to discriminate what is "already present" at this moment in your life when you are reading your chart's interpretation, from what will appear later in the logic of your evolution: you must sort out all the pieces of information provided and, in most cases, you will see that your astrological portrait is helpful for your endeavours to know yourself better.

Finally, several readings of an astrological portrait are usually necessary in order to absorb all its different meanings and to evaluate the relevance of each character trait.

In any case, better self-knowledge obviously contributes to faster personal blossoming, and it is undoubtedly one of astrology's major roles: contributing to know oneself better, in order to improve more rapidly, to deal with one's weaknesses and to avoid its drawbacks, and to take advantage of one's assets as efficiently as possible.

---