



**Al Pacino's
Astrological Portrait**





Al Pacino's Astrological Portrait



Introduction	2
Your Planets, Houses, Aspects, and Natal Chart	4
Preamble	7
Your Planetary Repartitions	8
Your Dominant Modes and Elements	9
Your Dominants: Planets, Signs and Houses	10
Your Style, Behaviour, and Peculiarities	14
Your Sensitivity	18
Your Affectivity	20
The Way You Take Action and Your Sexuality	22
Your Intellect and Your Communication Style	23
Your Goals, Motivations, Career, and Destiny	24
Your Assets and Your Part of Joviality	27
Your Serious Side	27
A Few Special Points	28
Your Isolated Planets	29
Annex 1: Your Minor Dominants	31
Annex 2: Karmic Study	35
Conclusion	37



Al Pacino's Astrological Portrait

Introduction

To fully benefit from this portrait, we suggest that you read its introduction and its preamble carefully, and then that to take the time to soak up the interpretations of each chapter. Given the large number of texts, which mirrors the human being's complexity, you may need to go through the contents several times, so as to get a good grasp of their meaning and to know yourself better. This will reward your patience.

The purpose of this report is to describe your psychological portrait and to highlight the most fundamental features on the personal area. The report begins with the analysis of your planetary dominants and outlines your personality's general traits before going into further detail. Minor dominants are analysed at the end of Annex 1, for purposes of clarity. Your report then delineates the various facets of your personality:

In general, even when relationships are not involved, we express ourselves and we feel according to our character and our personal motivations: this is indicated by the Ascendant and the Sun sign which both give details on the way we function. They shed a tremendously important light which allows to figure out your personality. Here, we describe your Sun sign (your inner self), your Ascendant (your behaviour as seen by others), and the ruler of the Ascendant (interesting additional pieces of information about the style of your personality). These descriptions alone cover nearly a third or a half of your psychological signature, depending on your natal chart characteristics.

Then, we address your sensitivity, or in other words, the way you receive things and how you express your emotions ; it works as a constant filter for all your exchanges, even when it becomes a more secondary element in your amorous relationship, because at that moment, affectivity prevails. Sensitivity is the way you perceive things, it is your radar, your daily mood, and at the same time, it indicates how you react to your entourage, on a daily basis. It is what others immediately see of you. In the second paragraph, we explain in which areas of life your sensitivity and your emotions are strongest, therefore, where you are most vulnerable.

After this, it is your affectivity, the way you love and how you charm, that comes into play as soon as you fall in love: the first part indicates its basic structure or its main form. The second part describes the areas where it is best expressed and how you display it, according to your personality.

A third fundamental area deals with your mode of action and your sexuality: how you behave, how you manage to obtain what you want, what kind of desires you have. There are twelve possibilities, very

different from one another. The study discloses the specific one that applies to you. In the second paragraph, we explain in which life areas you may most efficiently take advantage of your capacity for action and for conquest.

Your ways of communicating and of thinking are obviously among the major elements that must be integrated into the delineation and the description of your personality. Indeed, they influence your general behaviour and may modify or enhance the image your project (for instance, extraversion may “compensate” a weak affectivity, but a huge number of cases are possible). An additional chapter indicates the favourite areas where you enjoy communicating, thinking and meeting with people.

Besides, we analyze an even more personal aspect that is important to define and understand what may occur within your couple: each of us have a centre of interest, a privileged manner to be fulfilled or to achieve our destiny; this main motivation is indicated by the positions of your Sun and your chart ruler in the astrological houses and we provide you with its detailed description.

A natal chart contains the potential for specific fulfilment and a whole range of assets, protections and qualities. How does the lucky factor manifest in your personality? In which area can you best exploit your qualities? The answers are precisely revealed to you in this chapter.

On the other hand, we all feel in us a part of vulnerability, doubts and fears. How does this part of solemnity or serious side play out? How is it possible to handle it in order to evolve and to get rid of useless elements? All this information is provided to you in these two paragraphs.

Then, you can discover three additional traits of your personality that must be considered as secondary ones. They deal with your predispositions, which means that they need to be triggered by external events because they are not influenced by your will; let's call it a part of fate. Please, bear in mind that your destiny can unfold only in accordance with what you are: therefore, even if they belong to your more unconscious self, these characteristics are parts of you, definitely.

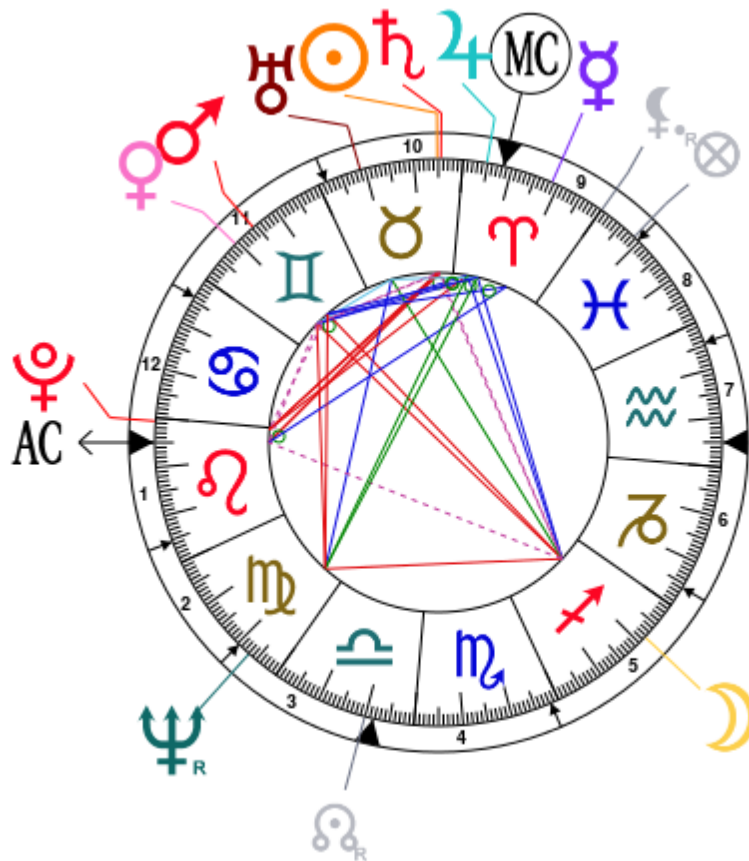
The karmic chart complements the psychological portrait or natal chart. It is based on the positions of the Lunar Nodes, the Black Moon, and the Part of Fortune. These elements of the chart, sometimes referred to as fictitious points, provide information about the spiritual meaning of your destiny. Owing to the fact that we all have in us acquired knowledge and the urge to go on a quest, our life is an evolutionary journey... However, these texts must be read with great caution: this is the reason why you will find this analysis in the Annex 2 of your report.

Your Planets, Houses, Aspects, and Natal Chart

Al Pacino, born April 25, 1940, at 11:02 AM, Manhattan (New York), New York [73.59W ; 40.46N ; 5W00]

Natal Planets				In House	Natal Houses (Placidus)	
☉ Sun	5°17'	♉ Taurus	House 10	House 1	4°59'	♌ Leo
☾ Moon	21°41'	♐ Sagittarius	House 5	House 2	25°27'	♌ Leo
☿ Mercury	11°23'	♈ Aries	House 9	House 3	20°21'	♍ Virgo
♀ Venus	20°38'	♊ Gemini	House 11	House 4	21°40'	♎ Libra
♂ Mars	15°44'	♊ Gemini	House 11	House 5	28°18'	♏ Scorpio
♃ Jupiter	25°09'	♈ Aries	House 10	House 6	4°14'	♐ Capricorn
♄ Saturn	4°30'	♉ Taurus	House 10	House 7	4°59'	♑ Aquarius
♅ Uranus	21°00'	♉ Taurus	House 10	House 8	25°27'	♑ Aquarius
♆ Neptune	23°07' R	♍ Virgo	House 3	House 9	20°21'	♓ Pisces
♇ Pluto	0°39'	♌ Leo	House 12	House 10	21°40'	♈ Aries
♁ Node	19°56' R	♎ Libra	House 3	House 11	28°18'	♉ Taurus
♇ Lilith	29°54' R	♓ Pisces	House 9	House 12	4°14'	♋ Cancer
AS AS	4°59'	♌ Leo				
MC MC	21°40'	♈ Aries				

In keeping with the common practice, we consider that a planet posited within 1 degree of the next house belongs to that house. We allow an orb of 2 degrees for the ASC and the MC.



List of Your Active Planetary Aspects

Please find below the list of all the active inter-aspects which are interpreted in this report, in addition to your planets in sign, in house, and all your planetary dominants. Since the aspects between slow-moving planets are of a collective nature, they are not displayed, in compliance with our interpretation rules.

- ★★★★★ Sun sesqui-quadrate Moon, orb -1° 23'
- ★★★★★ Sun semi-square Venus, orb 0° 21'
- ★★★★★ Sun conjunction Jupiter, orb 10° 08'
- ★★★★★ Sun conjunction Saturn, orb 0° 47'
- ★★★★★ Sun square Pluto, orb -4° 38'
- ★★★★★ Sun square Ascendant, orb -0° 18'
- ★★★★★ Moon opposite Venus, orb -1° 02'
- ★★★★★ Moon opposite Mars, orb -5° 56'
- ★★★★★ Moon trine Jupiter, orb 3° 28'
- ★★★★★ Moon sesqui-quadrate Saturn, orb -2° 1'
- ★★★★★ Moon inconjunction Uranus, orb -0° 4'
- ★★★★★ Moon square Neptune, orb -1° 26'
- ★★★★★ Moon sesqui-quadrate Ascendant, orb 1° 41'
- ★★★★★ Moon trine Midheaven, orb 0'
- ★★★★★ Mercury sextile Mars, orb 4° 21'
- ★★★★★ Mercury trine Ascendant, orb -6° 24'
- ★★★★★ Mercury conjunction Midheaven, orb 10° 17'
- ★★★★★ Venus conjunction Mars, orb 4° 54'
- ★★★★★ Venus sextile Jupiter, orb -4° 3'
- ★★★★★ Venus semi-square Saturn, orb 1° 08'
- ★★★★★ Venus semi-sextile Uranus, orb -0° 21'
- ★★★★★ Venus square Neptune, orb 2° 28'
- ★★★★★ Venus semi-square Ascendant, orb -0° 39'
- ★★★★★ Venus sextile Midheaven, orb -1° 01'
- ★★★★★ Mars square Neptune, orb 7° 22'
- ★★★★★ Mars semi-square Pluto, orb -0° 04'
- ★★★★★ Mars sextile Midheaven, orb -5° 56'
- ★★★★★ Jupiter conjunction Saturn, orb 9° 2'
- ★★★★★ Jupiter conjunction Midheaven, orb 3° 28'
- ★★★★★ Saturn square Ascendant, orb 0° 28'
- ★★★★★ Uranus semi-sextile Midheaven, orb -0° 4'
- ★★★★★ Neptune inconjunction Midheaven, orb 1° 26'
- ★★★★★ Pluto conjunction Ascendant, orb 4° 19'

Meaning of Stars

Stars indicate the strength of the aspects. Two solid coloured stars (there are half-stars also), mean that the aspect is powerful enough to be noticed at the first reading.

We strongly advise that you read the paragraphs displaying less than two stars later on, after you have absorbed the full import of the other texts.

The yellow colour indicates a soothing and conciliating aspect, and the red colour, a dynamic and tense aspect. The red aspects enable you to evolve, to take action, and to learn to turn your "weaknesses" into assets through your life experiences. The yellow aspects are innate strengths on which you rely in order to grow better with the former...

Preamble

When interpreting a natal chart, the best method is to start gradually from general features to specific ones. Thus, there is usually a plan to be followed, from the overall analysis of the chart and its structure, to the description of its different character traits.

In the first part, an overall analysis of the chart enables us to figure out the personality's main features and to emphasize several points that are confirmed or not in the detailed analysis: in any case, those general traits are taken into account. Human personality is an infinitely intricate entity and describing it is a complex task. Claiming to rapidly summarize it is illusory, although it does not mean that it is an impossible challenge. It is essential to read a natal chart several times in order to absorb all its different meanings and to grasp all this complexity. But the exercise is worthwhile.

In brief, a natal chart is composed of ten planets: two luminaries, the Sun and the Moon, three fast-moving or individual planets, Mercury, Venus and Mars, two slow-moving planets, Jupiter and Saturn, and three very slow-moving planets, Uranus, Neptune and Pluto. Additional secondary elements are: the Lunar Nodes, the Dark Moon or Lilith, Chiron and other minor objects. They are all posited on the Zodiac wheel consisting of twelve signs, from Aries to Pisces, and divided into twelve astrological houses.

The first step is to evaluate the importance of each planet. This is what we call identifying the dominant planets. This process obeys rules that depend on the astrologer's sensitivity and experience but it also has precise and steady bases: thus, we can take into account the parameters of a planet's activity (the number of active aspects a planet forms, the importance of each aspect according to its nature and its exactness), angularity parameters; (proximity to the four angles, Ascendant, Midheaven, Descendant and Imum Coeli or Nadir, all of them being evaluated numerically, according to the kind of angle and the planet-angle distance) and quality parameters (rulership, exaltation, exile and fall). Finally, other criteria such as the rulership of the Ascendant and the Midheaven etc. are important.

These different criteria allow a planet to be highlighted and lead to useful conclusions when interpreting the chart.

The overall chart analysis begins with the observation of three sorts of planetary distributions in the chart: Eastern or Western hemisphere, Northern or Southern hemisphere, and quadrants (North-eastern, North-western, South-eastern and South-western). These three distributions give a general tone in terms of introversion and extraversion, willpower, sociability, and behavioural predispositions.

Then, there are three additional distributions: elements (called triplicity since there are three groups of signs for each one) - Fire, Air, Earth and Water - corresponding to a character typology, modality (or quadruplicity with four groups of signs for each one) - Cardinal, Fixed and Mutable - and polarity (Yin and Yang).

There are three types of dominants: dominant planets, dominant signs and dominant houses. The novice thinks astrology means only "to be Aries" or sometimes, for example, "to be Aries Ascendant Virgo". It is actually far more complex. Although the Sun and the Ascendant alone may reveal a large part of the character - approximately a third or a half of your psychological signature, a person is neither "just the Sun" (called the sign) nor just "the first house" (the Ascendant). Thus, a particular planet's influence

may be significantly increased; a particular sign or house may contain a group of planets that will bring nuances and sometimes weaken the role of the Ascendant, of the Sun sign etc.

Lastly, there are two other criteria: accentuations (angular, succedent and cadent) which are a classification of astrological houses and types of decanates that are occupied (each sign is divided into three decanates of ten degrees each). They provide some additional informations.

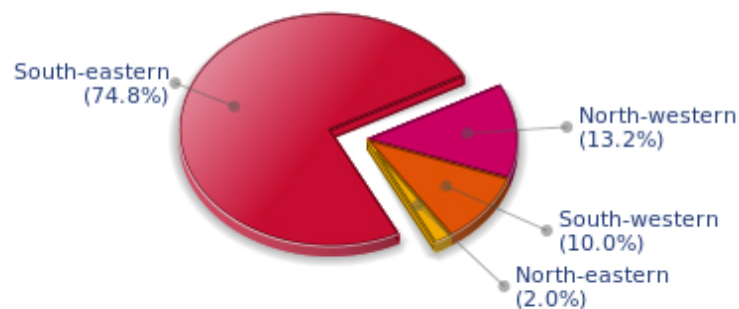
These general character traits must not be taken literally; they are, somehow, preparing for the chart reading. They allow to understand the second part of the analysis, which is more detailed and precise. It focuses on every area of the personality and provides a synthesis of all the above-mentioned parameters according to sound hierarchical rules.

As explained in the introduction of your Psychological Portrait report, minor dominants are analysed at the end of Annex 1, for purposes of clarity.

Your Planetary Repartitions

Each quadrant is a combination of the four hemispheres of your birth chart and relates to a character typology. The Southern hemisphere – the top of your chart, around the Midheaven – is associated with extraversion, action, and public life, whereas the Northern hemisphere prompts to introversion, reflexion, and private life. The Eastern hemisphere – the left part, around the Ascendant – is linked to your ego and your willpower, whereas the Western hemisphere indicates how other people influence you, and how flexible you are when you make a decision.

Your Four Quadrants

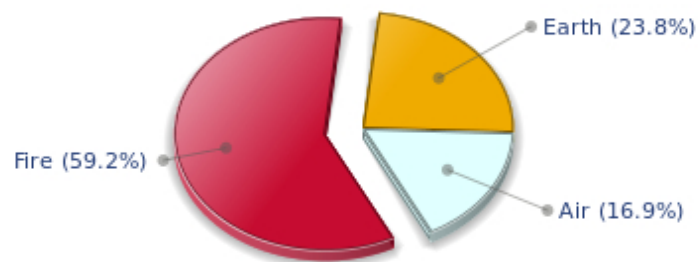


Al Pacino, the diurnal South-eastern quadrant, consisting of the 10th, 11th and 12th houses, prevails in your chart: assertion and goals achievement are at the centre of your concerns. You are very keen to implement your dreams and your plans. You achieve your ambitions as soon as possible, whether through an active social life, highly charged friendly relations, or an urge to take actions in order to reap - in the eyes of the world, of course - the rewards of your dynamism. It is likely that spirituality or humanitarian actions are part of your motivations, sometimes at the price of some degree of isolation.

Your Dominant Modes and Elements

Al Pacino, here are the graphs of your Elements and Modes, based on planets' position and angles in the twelve signs:

Your Four Elements



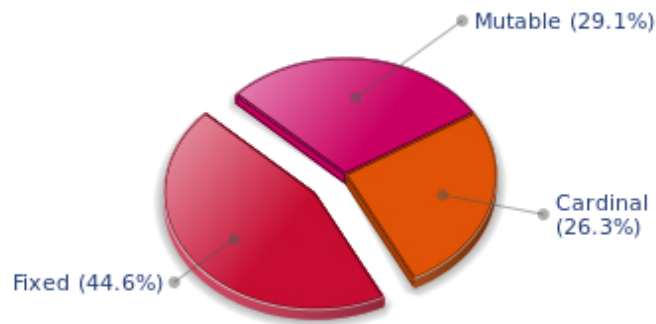
Al Pacino, Fire is dominant in your natal chart and endows you with intuition, energy, courage, self-confidence, and enthusiasm! You are inclined to be passionate, you assert your willpower, you move forward, and come hell or high water, you achieve your dreams and your goals. The relative weakness of this element is the difficulty to step back or a kind of boldness that may prompt you to do foolish things.

Like the majority of Earth signs, Al Pacino, you are efficient, concrete and not too emotional. What matters to you is what you see: you judge the tree by its fruits. Your ideas keep changing, words disappear, but actions and their consequences are visible and remain. Express your sensitivity, even if it means revealing your vulnerability. Emotions, energy and communication must not be neglected; concrete action is meaningless if it is not justified by your heart, your intellect or your enthusiasm.

Your natal chart shows a lack of the Water element, with only 0.00% instead of the average 25%. Whether you are aware of it or not, affective values bring about problems, for you or your close friends. In general, a lack of Water does not necessarily mean that you are unable to love as much as others do. However, you may find it difficult to express the deepness of your heart and of your feelings. In the best cases, you come to terms with it, you adjust, you manage to show more affection or, why not, you pretend to be really affected! In the worst cases, you get into the terrible habit of repressing these essential values and you tend to forget that they are the basis of the richest and strongest bonds between human beings.

The twelve zodiacal signs are split up into three groups or modes, called quadruplicities, a learned word meaning only that these three groups include four signs. The Cardinal, Fixed and Mutable modes are more or less represented in your natal chart, depending on planets' positions and importance, and on angles in the twelve signs.

Your Modes



The Fixed mode corresponds to a majority of elements in your chart, Al Pacino, and represents the desire for security and durability: you are able to concretely appreciate a situation and its stability. You definitely prefer to play the role of a loyal, obstinate and hard-working person, rather than to try new and risky experiences - beware, however, not to confuse obstinacy with intransigence. You structure, cement, and strengthen everything you find on your way: it is your nature, although you are not especially interested in swiftness: slow and steady...

Your Dominants: Planets, Signs and Houses

The issue of dominant planets has existed since the mists of time in astrology: how nice it would be if a person could be described with a few words and one or several planets that would represent their character, without having to analyse such elements as rulerships, angularities, houses, etc!

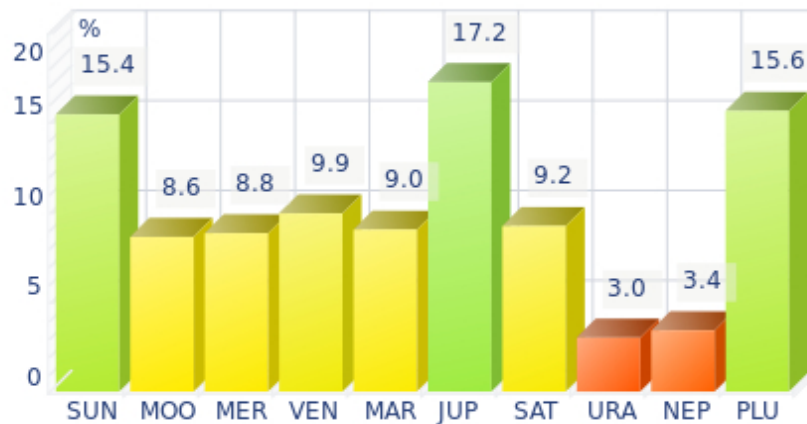
The ten planets - the Sun throughout Pluto - are a bit like ten characters in a role-play, each one has its own personality, its own way of acting, its own strengths and weaknesses. They actually represent a classification into ten distinct personalities, and astrologers have always tried to associate one or several dominant planets to a natal chart as well as dominant signs and houses.

Indeed, it is quite the same situation with signs and houses. If planets symbolize characters, signs represent hues - the mental, emotional and physical structures of an individual. The sign in which a planet is posited is like a character whose features are modified according to the place where he lives. In a chart, there are usually one, two or three highlighted signs that allow to rapidly describe its owner.

Regarding astrological houses, the principle is even simpler: the twelve houses correspond to twelve fields of life, and planets tenanted any given house increase that house's importance and highlight all relevant life departments: it may be marriage, work, friendship etc.

Al Pacino, here is the evaluation diagramme for your planets:

Your Dominant Planets



The three planets that are most highlighted in your chart are Jupiter, Pluto and the Sun.

Jupiter, the planet of expansion, organization, power and benevolence, is quite emphasized in your chart. Like any Jupiterian, you are warm, open, sociable, consensual, active and optimistic. You can use your self-confidence to erase differences of opinion, and you leave the task of analyzing and perfecting things to specialists. Your role, and you know it since you were young, is to gather, to demonstrate your synthesizing and conciliatory mind, and to naturally reap its fruits - power.

You appreciate legality, social order but also order in general. With you as a leader, every plan or human entity can be organized and structured. You excel at supervising. The Jupiterian type is indeed the politician par excellence, and a positive Jupiter in your chart is synonymous with good integration into society, whatever the chosen path.

Is this idyllic picture really perfect? Certainly not: each planet's typology has its own weaknesses. One of yours is pride, like the Solarian, but your will of expansion at all costs may generate a form of exaggeration in everything, endless pleasure, inappropriate self-confidence that could lead you to rough materialism and the thirst for absurd material comfort - in the worst cases, of course.

With Pluto as a dominant planet in your chart, you are a magnetic and mighty predator, like the Scorpio sign ruled by this planet, who needs to exert pressure on others in order to "test" them. You are always ready to evolve, to risk destruction for reconstruction - including your own - to live more intensely whilst imposing your secret authority on things and on people you encounter.

You may come across as wicked, cruel or too authoritarian, but actually you only follow your instinct, you sound people out, and you like to exert your domination simply because your vital energy is too powerful to remain inside. You are inclined to be passionate, with hidden motivations. You are sometimes misunderstood but one of your great Plutonian assets is to go successfully through each life ordeal with ever growing strength.

One of the dominant planets in your natal chart is the Sun. He symbolizes will, magnetism, sense of honour and dignity. You are a Solar being, and you often display charismatic and leadership qualities. Your warmth and your persuasive power lead you far away from pettiness. You enjoy thinking big and,

consequently, you move forward according to what you decide.

Your Solarian weakness may be related to the sin of pride or to excessive authority. The frontier between pride and vanity is tenuous: be careful not to overstep it and to keep the nobleness of heart that is part of your charm.

Your Dominant Signs



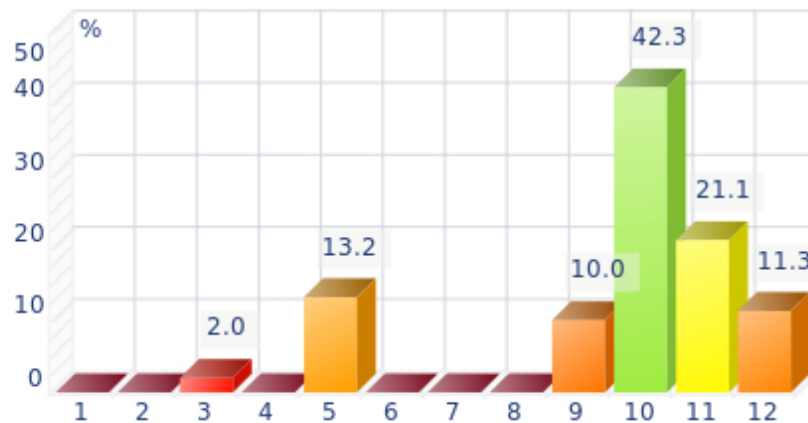
In your natal chart, the three most important signs, delineated according to the above-mentioned criteria, are, in decreasing order of strength, Aries, Leo and Taurus. They are often prominent because your Ascendant and your Sun are posited there. However, it is not always the case: it may be because they are occupied by a cluster of planets, by a planet near an angle other than the Midheaven and the Ascendant, or because two or three planets are very active and form numerous aspects from these signs. Therefore, you partly take on the three signs' characteristics, which are somehow superimposed on your natal chart, and all the more so if any of the signs in question is highlighted.

Arian blood runs through your veins! You have that enthusiasm, frankness, courage, and fastness which usually make you so likeable in spite of your somewhat rough, naive, or violent side. As a bonus, Aries' gushing fire always gives you the impetus to make a fresh start, should you stumble or undergo life hardship!

With Leo as a dominant sign, you naturally shine brightly. Your dignity, your sense of honour, and your generosity can almost turn you into a solar mythological hero, a knight or a lord from the ancient times. People may blame you for your selfishness, your pride or your somewhat loud authority, but if you are self-confident, kind-hearted and strong-willed, it surely makes up for your little flaws, as long as they remain moderate...

With the Taurus sign so important in your chart, you are constructive, stable, and sensual. Good taste, sense of beauty, manners, and unfailing good sense - all these qualities contribute to your charm and seductive power. Furthermore, if some people criticize your slow pace and your stubbornness, you rightly reply that this is the price for your security, and that you like the way it is - slow and steady....

Your Dominant Houses



Houses 10, 11 and 5 are the most tenanted ones in your natal chart. To compute their strength, planets and angles are weighed according to various astrological criteria such as swiftness, activity, angularity, rulership etc. From the analysis of the most tenanted Houses, the Astrologer deduces the fields of activity that are most relevant to you, be it because of what you are experiencing, or what you may experience in the future, or because of your deep inner motivations.

With a prominent 10th house, your destiny's achievement may be very notable: the 10th house represents your career, your public life, and your ambitions. A good deal of your energy may thus be used to successfully implement what you have in mind. Instinctively, you are very keen to make your dreams come true. Sooner or later, you will deal with the public, and your personal achievement will go through trials and ordeals: other people and visible actions.

The 11th house is among your dominant houses. Therefore, social life and friendships are very important, even strategic to you.

You think that group activities, whether in the humanitarian field or simple gatherings of friends, are endless sources of inspiration and of enjoyment, provided that there are no tensed aspects in this sector. Everything human is important to you, often more important than your own success, unless your 10th house is also powerful.

The 5th house is one of your dominant houses: hobbies, love life, sports, and games, including speculation and all kinds of entertainment, are fields that you actually take seriously! On a more subtle level, artistic creation as well as other forms of creation - including begetting children - could be one of your assets. You gain from taking part in leisure associations and various activity clubs in which a catchword resounds more than for most people: pleasure.

Your Style, Behaviour, and Peculiarities

What is commonly known as "sign" indicates the position of the Sun in the Zodiac. The Sun highlights all the characteristics of the sign he tenants. According to astrology traditional rules, these characteristics are all the more pure and exact when the Sun is strong in the sign, or when the sign is particularly highlighted within the chart. Here, we indicate the pure characteristics of the sign but you must bear in mind that they may only shed a light on a particular aspect of your personality. Indeed, the sole sign of the Sun, or of the Ascendant, can never describe an astrological chart because it depends on the degree of strength of the said sign in your chart.

Another important point must be underlined. Contrary to the Ascendant, which clearly describes your appearance, your vitality, your physical constitution, your spontaneous behaviour and the image you project, your Sun sign describes your inner self, which you may not completely be aware of, and which may emerge gradually as you mature: it is about your inner personality that you reveal only to the members of your entourage whom you trust. The Sun sign is likely to be the final form of your personality, once it has evolved in line with the energies of the other parts of your chart, the beginning of which is seen in the Ascendant, your external "bark".

The Ascendant is one of the major components of your natal chart. It is the zodiacal sign that rises in the East at the very moment of your birth. To calculate it, it is therefore necessary to know your exact time of birth.

It provides with a wealth of information on your personality. It is one of the key features that allows the analysis of several parts of you, such as your appearance, your character as it is initially perceived and your immediate behaviour. It describes the external aspect of your personality which you always display, but it also describes your physical constitution in the long-term, in other words, your health.

Please be aware that, in spite of the importance of the Ascendant, the accuracy of its description depends on how strongly highlighted it is in your natal chart. We use the entire set of astrological rules to assess the strength of the Ascendant. In most cases, the Ascendant is as revealing as your "sign", i.e., the sign where the Sun is posited at the time of birth.

You were born under the sign of Taurus and your Ascendant is in Leo

Before broaching the details of the meaning of your Sun and your Ascendant, as a preamble, we offer a brief generic interpretation of their combination in your chart:

These two signs are equally determined. Your Leo Ascendant influences your outward appearance, which is perceived by people who do not know you well, and it projects a quite demonstrative and even brilliant image. You have a real knack for showing yourself off to advantage, or in a subtler way, you manage to be admired. You are very conscious of the image you present, and you consider that humour and theatricality are your best assets. Because you use your look, some people may find you endearing. If one scratches this bright veneer, one finds a more natural, genuine, and simple personality. You are very stubborn in your ideas and your actions because both Taurus and Leo are Fixed signs, and therefore, inflexibility is one of your main traits. It is very hard for you to accept to lose control over any situation. Perhaps Taurus, which has strong concern for its self-interest, is slightly more able to change than proud

Leo.

You were born with the Sun in Taurus

Peace, joy of life and sensuality are essential to you: You have a simple and quiet nature. You easily find happiness because you are not competitive. In addition, your relaxed attitude and your common sense always take you to places where you are happy, even though you are not the number one, even though you do not move in haste. The important thing for you is to construct, with patience and persistence. These two qualities yield strong, steadfast, and sustainable efforts that can withstand any pitfalls.

You are gentle, with a slow thinking process, but once you have opted for an orientation, nothing, no one, can make you change your mind. You loathe changes in general, and once you have taken the few major unavoidable decisions in the course of your life, you are on track!

As you are born under this sign, you are loyal, steadfast, strong, patient, enduring, persistent, attached, sensual, realistic, constructive, tenacious, with a strong need for security. But you may also be stubborn, rigid, possessive, materialistic, static and slow.

In love, Sir, more often than not, your passions are strong. It may take you some time to be moved, but once your choice is made, it is a lasting one and you are particularly endearing and loyal. You are not interested in infidelity or in having numerous partners.

Your love emerges slowly but it grows in depth, like a root which solidifies with time. You are not too romantic because you are so practical and conventional... but your style and your sexiness compensate for your lack of idealism. You tend to associate the concept of marriage with that of lifestyle or of the benefits that come with it.

Your physical urges are pressing; you are sensual and pleasure takes an important place in your life. You appreciate partners who cook like a cordon-bleu and who may cause a few gastronomic excesses, but you readily accept them.

Your Ascendant is in Leo

Psychologically speaking, your nature is powerful and self-assured. You are a leader whose strength and nobleness naturally arouse your entourage's respect and adherence and your legitimacy is unquestioned. Your sense of commandment, the honour your person constantly exudes, your prestige and your charisma is a whole which puts you into the spotlight wherever you go.

As you are born under this sign, you are proud, determined, wilful, loyal, solemn, generous, ambitious, courageous, heroic, full of vitality, creative, confident, seductive, happy, daring, proud, majestic, honest, magnanimous, charismatic, responsible, noble, brilliant, radiant, dramatic, affectionate, full of humour, demonstrative, swaggering and self-confident. You can also be domineering, conceited, touchy, authoritarian, stubborn, intolerant, self-centered, irascible, violent, and nonchalant.

In love, Sir, you are very demanding. You are a powerful and loyal lover. Your partner must be the most beautiful and the most brilliant person and she must make you feel that she admires you. In such a case, your generosity has no limit and you give your love without reservation, with nobleness, liberalities and luxury. You set up a stable and brilliant home where children have the essential part.

The main danger is that you value trust to the extent that you grant it generously but too hastily: if you happen to find out that your trust is misplaced, the whole world around you crumbles and the relationship is forever damaged. In this regard, you are cut-and-dried and you feel so hurt and humiliated that you seldom can forgive.

Another similar danger comes from the fact that your expectations are very high and it is very unlikely that real life offers such unconditional and lasting love: for this reason, it is not unusual that you never marry, all the more so because your self-centered character is not prone to self-questioning...

The ruler of your chart is in Taurus

The ruler of the Ascendant, also referred to as the chart ruler, brings a few interesting nuances to the meanings provided by the Sun and the Ascendant. The sign in which the ruler of the Ascendant is posited fine-tunes the style of personality described by the Sun and the Ascendant. It may strengthen it if the sign is identical to either of them.

In your chart, the ruler of the Ascendant is the Sun. This specific feature means that the Sun's characteristics previously delineated are strengthened.

Aspects to your Ascendant

Several planets form an aspect with your Ascendant, Al Pacino. Therefore, in their specific way, they modify your behaviour and your personality, which do not take on the pure characteristics of your Leo Ascendant only, but which are a blend of its characteristics with those of the said aspects.

★★★★★ Sun square Ascendant, orb -0° 18'

There may be a contradiction between your will and your external appearance, Al Pacino, which slows down your natural spontaneity and in some circumstances, gives rise to doubts regarding your behaviour towards other people and the need to be true to your own beliefs. There is certainly nothing serious with this minor dissonance between the Sun and your Ascendant, only choices that are to be made, so as to remain in harmony with yourself.

★★★★★ Saturn square Ascendant, orb 0° 28'

This hard aspect between Saturn and your Ascendant may bring about a lack of self-confidence and some inhibitions in your behaviour, in people's eyes, Al Pacino. Therefore, you must have trust in yourself and you must not be taken away into the spiral of doubts with its usual consequences, which are to hide away, or on the contrary and as a compensation, to overdo. Please, keep in mind that all this is highly subjective, and that in most cases, if you fully understand it, you can gradually overcome this slight restraint, and even turn it into strength. This is how you can keep your self-esteem and transform your prudence into... an asset.

★★★★★ Pluto conjunction Ascendant, orb 4° 19'

Pluto is in conjunction with your Ascendant, Al Pacino. The planet of taboos, power, secrets, and instinct endows your behaviour with an uncontrollable domineering note which is not negative as such. At the same time, it also provides you with exceptional lucidity. In spite of yourself, Pluto prompts you to discover people's secrets, to provoke them in order to better understand their "truth". Your mysterious and slightly frightening magnetism is definitely part of your seduction!

★★★★★ Mercury trine Ascendant, orb -6° 24'

You are endowed with quite good adaptation capacities, Al Pacino. Thanks to Mercury, your behaviour matches your intellectual concepts, or your style of communication, which is quite an effortless one.

★★★★★ Venus semi-square Ascendant, orb -0° 39'

In certain circumstances, Al Pacino, you tend to adopt an attitude that is not necessarily in line with your real emotions. This discrepancy between your behaviour and your feelings, caused by Venus, may disconcert the people you mix with. Have self-confidence, don't be too pushy or... withdrawn, and forget your fears. Then, people can have a better perception of your personality, and you can harvest the fruits of your efforts.

★★★★★ Moon sesqui-quadrate Ascendant, orb 1° 41'

Sometimes, Al Pacino, your sensitivity clashes with the image you want to project. As a result, you may feel vulnerable and suffer if you let yourself be disheartened. Try to put things into perspective and to confront your emotions without fearing your external image. This is how you can compensate for this minor dissonance between the Moon and your Ascendant.

Your Sensitivity

Your nature is optimistic and emotional, Al Pacino, and you are caught up in two incompatible longings: you are fond of exoticism and independence of movement, but at the same time, you feel comfortable in a form of middle-class attitude and conformism; in general, it translates into a succession of moods, now quiet and well adapted to the situations you experience, now marked by an irresistible desire for change and revival. You have a good and naïve nature, with a lot of self-confidence. Your emotionalism prompts you to live intensely a variety of numerous emotional experiences, a bit scattered, but with all the stimulations you need to be a balanced person. Your pleasant and welcoming attitude wins you some degree of popularity, all the more so because, despite your thirst for adventures that may scare away some people, you adjust to your environment's customs so easily.

Entertainments, hobbies and parties, love affairs, holidays, here are the areas where you express best your emotions, Al Pacino. You like children's company, your popularity is often good and you use it in order to increase the number of your encounters in order to see your seductive power.

You are often endowed with artistic creativity. Art is a good outlet for all these gushing and fluctuating emotions that must be released at the slightest external stimulation.

★★★★★ Moon opposite Venus, orb -1° 02'

With this Moon-Venus aspect, passion and sensuality may often upset your well being and your tranquillity. Your way of loving is dual. You either accept life simple joys, or you live through intense emotions and consuming fevers. It is difficult for you to reconcile your daily life with your affective or sensual desire. Habits kill passion, whereas passion forbids the carelessness that is yet indispensable for your fulfilment. This aspect suggests the traditional mother/woman and father/lover antagonisms that are incompatible although it is possible to experience them alternately. It is important that you balance these antinomical desires: you may let the turmoil of your heart break the monotony of an amorous life devoid of excitement but it does not mean that you must forsake the reassuring values of a couple, or family cell, where you can rest at will and give free rein to your intimate behaviour. You may indulge yourself but don't forget that you must deserve love.

★★★★★ Moon square Neptune, orb -1° 26'

This Moon-Neptune dissonance wonderfully turns on the poetic soul, the exhilaration of feelings and dreams... and disturbs your practical life, as well as the management of contingencies. You do not lack inspiration but your reasons of living may be beyond your entourage's understanding! Bohemian life is pleasant but it is probable that you experience muddled situations. Your aims are noble and your intentions are very good. But you may not have the will to turn them into reality. It is important that you are wary of artificial paradises: escaping in the imaginary is not necessarily the best solution for problem solving. You are in search of an inaccessible tranquillity and you tend to procrastinate chores. Nevertheless, facts remain present and you may see that non-interventionism can only increase your difficulties. You must put an end to this vicious let-go circle. This does not imply that you have to forsake your dreams or to repress your very rich sensitivity.

★★★★★ Moon trine Jupiter, orb 3° 28'

Why should one complicate one's life if it is possible to enjoy the simple joys of the present? This harmonic Moon-Jupiter aspect indicates a cheerful nature, which earns your entourage's liking and protects the balance of your intimate life. Your sociability is supported by your desire to smoothly adhere to a group, a social or family cell. You are fond of moments where you unwind and relax. You value your

daily comfort and, to preserve it, you accept to play by the rules of privacy. When this aspect dictates your attitudes, you behave like a person easy to get along with... even though your personal demands, relegated to the backseat, come up again at top speed and force you to behave more in line with your inner needs.

★★★★★ Moon opposite Mars, orb -5° 56'

The Moon-Mars dissonance suggests touchiness and sometimes, aggressiveness. You are irascible and very sensitive to all sorts of threats and dangers. You react very quickly, too hastily. To protect your well being, you must learn to control your mood, to coordinate your actions and to balance your opinions. You are often disturbed by plain facts: Either you seek refuge in your intimate realm and refuse to face the truth or, on the contrary, you are engaged in altercations, which forbid all tranquillity. It is important that you balance these two tendencies and that you alternate moments of action with phases of carelessness and relaxation. These two attitudes are relatively irreconcilable.

★★★★★ Moon inconjunction Uranus, orb -0° 4'

The Moon and Uranus intrinsically share little in common: they get along as well as fire and water! It is difficult for you to reconcile your desire for well being and intimacy with your destiny's dazzling passions and thunderbolts. You may feel that your intimate and family realm hampers your freedom. There is a potential for crises, explosions or splits. The desire for independence does not get on well with security concerns. There may be strong temptations endangering your very life foundations and you may embark upon a liberating and personal adventure. However, you fear rash decisions. Your need for security may temper your impulses and put a brake on your individualistic aspirations. To harmonize these tendencies within your intimate life, you must leave yourself enough room for personal expression or for an activity of your own. Otherwise, as days go by, built-up tensions may jeopardize the quiet course of your life.

★★★★★ Sun sesqui-quadrate Moon, orb -1° 23'

In your chart, two polarities are clearly opposing - or complementing – each other: on the one hand, solar values, the image you project and the models you follow. On the other hand, lunar values, moments of letting-go and well being through casualness. When you commit yourself in a project, it is often to the detriment of your peace of mind. Conversely, you completely feel that you are your true self only when you are no more under the scrutiny of the outside world. Therefore, you separate your social and professional activities from your private life and you seldom match the requirements of the former with those of the latter. It may be a hurdle, a fundamental anxiety. It may also be an obvious asset, when it is well integrated: in that case, you succeed in assigning to yourself, and in fulfilling, objectives that are not necessarily in line with your intimate natural demands, which are preserved and separated from your intentions, your ambitions and your expectations. Thus, a strong will can turn this Sun-Moon hard aspect into a rich instrument for creativity. A shadow zone, or uncertainty, still remains: on the affective plane, you are very sensitive. May be too much, to the extent that you become vulnerable in many circumstances. Because in different periods of your life, your landmarks (solar) and your intimate balance (lunar) will be simultaneously challenged.

★★★★★ Moon sesqui-quadrate Saturn, orb -2° 1'

When this aspect is not well integrated, there is no feeling of integration and security. You feel that you are not understood or even, that you are rejected. It is difficult for you to find inner peace and tranquillity. You lack the quietness and the primordial confidence that would allow you to lay back and to be carried away and pampered by life. This configuration indicates questionings and doubts regarding the unconditional affection that each individual longs for. You do not trust the world. You tend to

dismiss social models, as well as your close friends' attachment and tenderness, probably because you need to test them and to get the feeling of being loved that you naturally lack. It would be a mistake not to see that you desperately need affection. You are particularly vulnerable to relationship flaws and you strive to find the gestures of love that would allow you to let go and to be nurtured by life. In such a context, the sincerity you display, as you give or refuse your trust, is highly commendable.

Your Affectivity

In your chart, the Sun is in Taurus and Venus, in Gemini. Two signs may follow each other and be quite different: Taurus' essential and fragile desire for balance opposes Gemini's will to discover, to experiment, to increase the variety of emotions and encounters (Venus). These two signs are definitely complementary. The Sun in Taurus facilitates the establishment of long-lasting affective adventures and therefore, it achieves fulfilment. Venus in Gemini hates to lock up the couple in a routine inevitably detrimental to the spontaneity and the plenitude of feelings. However, perfect balance can be achieved only when both tendencies are expressed – although they are antinomical in many regards. Selecting your partner, understanding and evolving abilities are decisive here. You must satisfy your solar sign's thirst for tranquillity and Venus' needs for novelty, alternately. You must meet the urges for intimacy, stability and the pressing necessity to fuel your passion, over and over again. As paradoxical as it may seem, you love only that very person who sometimes upsets Taurus' quietness and who challenges the serenity you dream of. Because passion is priceless. This is the price you have to pay for it.

What is it, that really appeals to you, Al Pacino, to love or to please? You have so much charm and so much volubility that you easily manage to be what is known as a lady-killer. Feelings and intellect are so tightly mingled that you may not know any more whether you are really in love or whether you are acting. You have a taste for flirt and variety, and you appreciate very much complicated situations where no one knows where the truth lies any more. You shift from one game to another. To you, everything can be an agent for seduction, be it your attitudes, your words or the way you dress. You do not separate your actions from your desire to please. People who do not understand this are in trouble because, if they take your sweet and well-phrased speeches too literally, they are likely to undergo cruel disappointments: for you, it is only a matter of living in the moment and you never commit yourself because, above all, you loathe confinement, even just its thought.

In general, your sociability is impressive, Al Pacino, and this powerful feature of your personality leads you to tread with ease between love and friendship, with your close entourage having some difficulties in discriminating, because you are so welcoming and charming. You are prone to obtain great satisfaction out of your friends and in most cases, you will be very naturally led to realize that your friendly relationship imperceptibly and gradually turns into a real love story! Besides, if by any chance your tie does not last forever, there is no doubt that you will be able to maintain a delightful rapport with your ex and, eventually, to get back to the ancient warm friendship which had served as the foundation of the idyll you had just experienced, with souvenirs as a bonus... Your affectivity is paradoxically both warm and unselfish because, like the astrological house that colours this part of your nature and the sign of Aquarius in analogy with the house, you are a refined and tolerant person, more focused on a large and collective vision rather than on a strictly personal approach in the romantic area. You are often granted protections for the projects you implement, particularly by your numerous feminine friendships. They deeply appreciate the cultured and refined side you exhibit at will and your inclination for your outings to the theatre, a concert, a conference etc. As far as feelings are concerned, your potential weaknesses

may precisely stem from your detachment or from your lack of involvement, which, although they are natural for you, may offend or may shock some of your love relationships. They may criticize you for some sort of distance or a half-hearted attitude and they may want you to change the way you express yourself: in such moments, be more demonstrative so as to prevent any possible budding reproaches...

★★★★★ Venus conjunction Mars, orb 4° 54'

With this aspect, innate affective behaviours prevail over opportunisms and calculations. You do not cheat with feelings and you prefer to be guided by your likes ... or your dislikes. Love is neither to be reasoned upon nor to be explained. It is important to experience one's passions spontaneously and to give free rein to the heart's tumultuous manifestations as well as to the body's demands. In other words, to be one's true self in the "now". You need to live intensely, to try all kinds of situations, sometimes to get hurt. Your sensitivity is the driving force behind your decisions and your actions. Real experiences are worth the best intellectual concepts. Spurred by your thirst for emotions, you try to build your life on bases that match your desires. Here, the trap may be that you pay too much attention to your moods and affects. But without them, life would be so dull. Even though emotionalism betrays you occasionally, it remains your best ally.

★★★★★ Venus square Neptune, orb 2° 28'

You are very idealistic in love and you may be blind. In many circumstances, you deem your sentimental life heavenly and you lay yourself open to delusions. Love is a dream and waking up is often painful. Your imagination distorts the game of intimate situations. It is important that you keep your sense of reality and that you avoid to embark upon dark or muddled paths. Forget about artificial paradises! The Tradition very rightly insists on the tendency for impossible love affairs. Your demand and your thirst for the absolute may make you dread to experience a common life that is inevitably flawed with compromises and vagaries. The object of your affection is idealized « because it was her, because it was me » and you do not reckon objective elements that will resurface later in full force. With this planetary configuration, the danger is in the idealistic, even fanciful, nature of your affectivity. It is certain that love cannot be bought or reasoned. But how is it possible to live an absolute passion on a daily basis? You must control your heart impulses and, without losing the sentimental riches that are part of your charm, you must put what you love in harmony with what you dream of.

★★★★★ Sun semi-square Venus, orb 0° 21'

The Sun and Venus form a mild dissonance in your natal chart. There is nothing very serious to worry about. There is only a small gap between what you really want on the one hand, and your natural need to charm and the warmth you display on the other hand. Thus, will and affectivity are slightly out of phase, but it is most likely that you are the only one who feels it. This is a quite trivial characteristic, and you probably do not have to correct it, since it is so mild.

★★★★★ Venus semi-sextile Uranus, orb -0° 21'

Your charm lies in the originality of your approach to love and in your uncompromising attitudes. Your motto? Freedom of love, whatever the price! Should your sentimental life become dull, you find a solution: you are romantic and you reinvent your couple's life, you give a new and unexpected momentum to your emotions. You create the kind sharpness that contributes to your exceptional affective life. You do not fear love at first sight or blazing passions. On the affective plane, you know where you are heading for, whom you love ... or love not. There is an indisputable intransigence. The heart impulses are irrevocable and implacable. You dream of a sentimental life that fulfils your aspirations and you use all possible means to achieve your ideal. Even though you may have to make the

necessary sacrifices.

★★★★★ Venus sextile Jupiter, orb -4° 3'

Charm and seduction are your assets. This harmonious Venus-Jupiter aspect favours your affective fulfilment and your sentimental well being. You earn your entourage's sympathy thanks to your conciliating sensitivity, your desire to please and your behaviour in society. In many circumstances, you arouse esteem and consideration – essential values to you. You like social whirls, life in society, the aesthetics and the arts. You often tend to look for the easy way out in your business and your affective relationships. You are known as a complacent person. However, your amorous commitments may be quite superficial. It is important that, without breaking the spell, you opt for a more genuine attitude, respectful of your essential desires. As we all know it, love cannot be bought. An indication of balance: because you are aware that compromises are necessary for a love affair to endure, better than anyone else, you know how to maintain harmony in love.

★★★★★ Venus semi-square Saturn, orb 1° 08'

This Venus-Saturn dissonance indicates a demanding, complex and often challenged affectivity. You are wondering about the meanings of love, pleasure and emotions. Your passions take an absolute character right away. No compromise, no sham must stain your sentimental life. In such a context, doubts abound. This aspect prompts you to review the roots of your affectivity, so as to find the assurance you lack and to soothe your dormant sentimental anxiety. Love is an eternal and endless quest. Because you are doubtful of the affection people have for you, you may never feel that you are really loved. Your affective behaviour reveals your uncertainties: tests and challenges follow one another until, eventually, you are certain to experience a love that meets your demands. It is obvious that on the sentimental area, you are not looking for the easy way out.

The Way You Take Action and Your Sexuality

Al Pacino, your mental activity is exuberant. Ideas are buzzing at high speed and you have the ability to think of several different things and to simultaneously process them. You are less interested in actions on the concrete or physical plane, because once you “see” a solution, its implementation is not that important any more since the crucial thing is that your mind remains bubbling with excitement. You are cerebral and curious and your sexuality is filled with fantasies, where pleasant ideas are mixed up with amplifying and enriching desires. Therefore, you are not simple but if your partner follows you, the stake is really worth it. Verbal jousting, the pleasure to debate and to discuss are continuous, with you. The only danger is to irritate people who may not have your swiftness or your sense of humour.

It is in the area of friendship and collective life (common projects, associations, etc.) that you express your impulsivity, your warmth, and your capacity for action, Al Pacino.

You are cut-and-dried and your motto is "either succeed or die". In case of success, it is your responsibility to make the relationship last because you are not the submissive type and you hardly compromise. You put a lot of passion in your friendly relationships. You are not interested in lukewarm or insipid acquaintances. Things must be moving, even though it may mean that the relationship is cut short.

In any case, you enjoy participating actively within a community and, whenever possible, you take the

leadership role, in your own way. As soon as you are more or less under the public eye, you become enterprising. When you are on your own, you do not feel the need to use your energy.

★★★★★ Mars semi-square Pluto, orb -0° 04'

There is a limit to your respect for laws and norms! Morals, conventions, social marks are of little value to you. With a touch of anarchy in the soul, you disregard conventions and you experience a sort of personal revolution. You prefer unconventional actions to dull conformism. To express your differences, you use a wide scope of possibilities that ranges from brewing revolt to ideological renunciation. Sometimes, you dismiss concrete facts that are nevertheless unavoidable. Hence, you undergo delusions and backlashes. You may also act rashly, to the detriment of your ideals. It is important that you control your actions and that you balance the respect for constraints with your personal demands and inner motivations.

★★★★★ Mars square Neptune, orb 7° 22'

You behave like a bohemian person and you are led by an ideal that you may not control. Your passions are undoubtedly sincere. However, you may target wrong objectives. You engage on hopeless struggles and meaningless confrontations. It is important that you watch out for fanaticisms from all sides and that you remain clear-sighted in the face of your exalted feelings. Your sincerity may work wonders when you champion lost causes. The most difficult thing is probably to keep your exacerbated sensitivity under control. Because you are deeply moved by facts, because you are sensitive to injustices and to the world's woes more than the average people, you embark on incessant battles, at the risk of undergoing a few delusions, on occasions.

Your Intellect and Your Communication Style

You enjoy discussing and exchanging ideas. You know how to put forward sharp and provoking comments in order to keep the debate moving ahead. You tend to use words to put yourself in the forefront and you may become a leader. Your exact and swift, dazzling understanding favours a direct approach to problems and helpful decisions. You are inventive, intuitive and you are in a hurry to bring your projects to a successful conclusion. You do not pay attention to details and you prefer to go to the essentials. However, your decision-making process may be too impulsive and may throw you into unconsidered actions; this is the reason why it may be good that you listen to other people's advice, that you do not walk headlong, and later, be forced to reverse back as a result, a situation you do not appreciate too much.

You have a roaming mind, Al Pacino, in the best sense of the term: you are interested in higher knowledge, whether in the moral, spiritual, political or religious field. You are attracted to what is far away and you want to travel to discover new horizons. It is possible that, early in your life, there was a kind of rebelliousness against preconceived ideas and sometimes, against the education within your family.

You have broad and open ideas. No petty or too concrete thoughts for you! Going further and higher is what matters to you. In accordance with your childhood aspirations, as an adult, you are a great traveller, both in mental travels and physical ones. In all cases, the foreign world's riches stimulate you.

★★★★★ Mercury sextile Mars, orb 4° 21'

The harmonic Mercury-Mars aspect is the signature of a quick wit and an energetic character. You take decisions rapidly and you implement them straight away. You never accept stiff situations. You need to design, to take action, to fight to express your acute sense of relation: the world, the people, everything is of concern to you... You need to be involved in relationships and in dialogues. Your sharp retorts earn you a reputation of straightforwardness. On the relations' area, your quick wit and your mobility are greatly appreciated. You find the allies and partners you need at the right time. An art of resourcefulness that is precious...

Your Goals, Motivations, Career, and Destiny

Your Sun is posited in the 10th House

Al Pacino, your need for assertion is very strong. It is clearly oriented towards the success of your professional or social destiny, or at least, towards an important rise compared to your initial background; your effort, your will and your goals are well defined in your mind: you have a concrete vision of the kind of destiny you are interested in and you do not want to stay on the backstage! Because in traditional astrology, the Midheaven relates to the mother, should other configurations of your chart concur, your mother might favour your ambition or speed up the success of your career.

You have an innate sense of commandment and a definite taste for honours, prestige, recognition of your self-worth. You don't like vagueness and your objectives are very concrete. You want to quickly leave anonymity and the quietness of the dark, for which you have no affinity. Your determined attitude, and your irresistible desire to play an increasingly important role in the position you hold, are major assets for the actual achievement of your goals. You want to shine forth and to heave yourself up, always higher and higher.

There are real indications of fame, provided that other elements of your chart concur. Even though you did not rise to fame, it is likely that, in your area, you enjoy some degree of glory. You are efficient and, with the help of your organizational skills, it is not difficult for you to find your spot in the sunshine.

In some rare cases, your ascent goes beyond the average ones and it may occur on the spiritual plane instead of the professional or the social plane. Therefore, you may be called upon to play a solar authority role in line with your beliefs and your commitment. You may become a leader or a master in the path you have chosen.

Even though you may hesitate to admit it and to tell others, your frenzied inclination for success inevitably brings about conflicts of authority; striving to heave yourself up, too high and too quickly, to a level that is so different from the one you were at, not so long ago, exposes you to clashes with the hierarchy or with those whom you regularly outgrow in the course of your ambitious journey and who may not agree with you.

There is also the fearsome and dormant danger of exhilaration of power and its disastrous consequences; hopefully, you do not have to jump into it with both feet. A fair dose of detachment and meditation may spare you many a trouble.

The ruler of your chart is in the 10th House

The ruler of the Ascendant, also referred to as the chart ruler as explained in a previous chapter, is also posited in one of the twelve Houses of the chart. Just like the Sun in his House, the ruler of the Ascendant provides certain abilities, or it makes you appreciate more keenly certain areas of life.

The ruler of your Ascendant is in the same House as your Sun. This specific feature of your chart strengthens the Sun's characteristics previously delineated.

Aspects influencing your ambitions

Regarding your destiny or your career, the following aspects of your natal chart allow to fine-tune what has just been said above:

★★★★★ Sun conjunction Saturn, orb 0° 47'

This aspect indicates a firm and discreet will, a rigorous and objective character. You are clear-sighted, particularly in difficult situations. You enjoy the moments of calm and solitude during which you can review your life at will. Your judgments are enduring and often extremist. You are outraged by injustice and inconsistency. When a problem arises, you do not take the easy way out with short-term solutions, on the contrary, you strive to solve the issue thoroughly. Better than anyone else, you challenge yourself, you review your choices and your attitudes. This is the reason why you are capable of handling crises and of overcoming any obstacle that requires an in-depth and relevant response. You may lack spontaneity but your behaviour reveals your wisdom. When you are facing an issue, you put forward the good question, to others, but also to yourself.

★★★★★ Moon trine Midheaven, orb 0'

Your sensitivity and your emotions are in line with your goal and your ambitions, Al Pacino. You do not need to curb your temper lest other people have a wrong perception of you. Indeed, by being your true self, very simply, your social ascent will unfold naturally.

★★★★★ Jupiter conjunction Midheaven, orb 3° 28'

Jupiter, the most beneficial planet of the Zodiac, is in conjunction with your Midheaven, your destiny, Al Pacino. It is undeniably an auspicious configuration which favours your social ascent or your professional destiny, which are often influenced by your respect for the law, and your natural self-confidence. These qualities remove pitfalls out of your way. With this very nice configuration, your profession or your destiny may also be linked to values symbolised by Jupiter: prominent political figure, medical doctor, businessman, judge, solicitor, or any respectable occupation.

★★★★★ Venus sextile Midheaven, orb -1° 01'

In your natal chart, Al Pacino, sweet Venus is in soft aspect with your Midheaven. It means that your natural charm and the way you express your feelings are appreciated in society. Usually, this configuration speeds up the achievement of your professional goals, or in any case, of a certain social status. A female - or females - may prove helpful for your career or your destiny.

★★★☆☆ Sun square Pluto, orb -4° 38'

You are dealing with both sides of the coin. People are mistaken when they think that they know you well, because the image you project does not necessarily depict what you really are. You may look like any given model, whereas you actually consider social values to be empty and childish. Deep down, you

are an anti-establishment person and you do not belong to the world and its laws. Or, on the contrary, you may project a more marginalized image and make it a point of honour to literally stick to your aspirations' ethics. You do not know who you are really, and where you stand. You may choose some sort of marginality, the adherence to another realm and a different scale of values. Unless you choose a life that apparently lives up to the expectations of others. In that case, you preserve a corner for your private secrets, with no norms, no fashion concerns, relationships off the beaten tracks, passions very removed from conventions. Your attitudes may seem paradoxical as you shift from commitment to refusal and from involvement to withdrawal.

★★★★★ Neptune inconjunction Midheaven, orb 1° 26'

Owing to this dissonance between Neptune and your Midheaven, Al Pacino, you may have difficulties in knowing what you want regarding your professional orientation. Your imagination and your flexibility cause contradictory feelings and sometimes result in indecisiveness. You are doubtful about the path your social or professional destiny should follow. There is definitely nothing serious to worry about. It is just that Neptune represents a heavy emotional burden which you must firmly deal with, so as not to delay your trek towards success!

★★★★★ Jupiter conjunction Saturn, orb 9° 2'

Jupiter and Saturn are favourably linked to each other in your natal chart. The Tradition indicates that this planetary aspect is a good omen for your social success and good integration in the society. Indeed, Jupiter stands for public life, respect for laws and hierarchy, and acceptance of established rules, whereas Saturn symbolises wisdom, time, seriousness, and perseverance. Therefore, it is only logical that with this Jupiter - Saturn configuration, your career, or your social destiny if you do not work, is well thought of by society, and that you are most likely to experience its happy outcomes sooner or later.

★★★★★ Uranus semi-sextile Midheaven, orb -0° 4'

Thanks to this soft aspect of Uranus to your Midheaven, Al Pacino, you are endowed with the gift to let yourself be carried away by the changes cropping up on your way. Instead of being disheartening, modifications affecting your professional or social environment... stimulate you! Then, you may show opportunism, in the good sense of the word, and throughout your life, you may experience strokes of good luck, the consequences of which can be increased, thanks to your talent and your lack of fear whenever you face newness.

★★★★★ Sun conjunction Jupiter, orb 10° 08'

This harmonious Sun-Jupiter aspect indicates an optimistic background that usually wins the entourage's adherence. It also suggests ambition and generosity and favours social integration and success. The desire to earn general consideration prompts you to display energy, joviality and benevolence. However, opportunism may be the other side of the coin. As you strive to win everyone's esteem, you may fall into disrepute. It is important that you remain clear-sighted so as to persistently pursue your long-term aims without believing that you should always « grab each and every opportunity ». However, this aspect remains an element of success because it allows you to adjust your objectives to the context, to whatever the situation offers or, on the contrary, to force your way through events and to achieve your ideals.

★★★★★ Mercury conjunction Midheaven, orb 10° 17'

With Mercury in conjunction with your Midheaven, Al Pacino, it is obvious that your style of communication and your thinking process reliably serve the interests of your social ascent. The subtlety

of your mind works wonders in society. You adapt yourself quickly, which favours your career and your ambitions in general. Your career or your social destiny may be linked to Mercurian values, meaning anything that has to do with communication, exchanges, dexterity, and short trips: journalist, recruiter, writer, television presenter, lawyer, postman, conjurer, juggler, reporter, advertising executive, real estate agent, consultant, etc.

★★★★★ Mars sextile Midheaven, orb -5° 56'

Your energy serves your professional goals and your social ascent in general, Al Pacino. This beneficial aspect of Mars to your Midheaven endows you with strong dynamism, and it rewards your sustained and efficient efforts. You enjoy taking action, and your results are gratifying most of the time.

Your Assets and Your Part of Joviality

The planet of Greater Fortune in this sign favours self-confidence, Al Pacino, as well as the capacity to be enthused and to show your warmth. Your most valuable asset is your ability to easily express your fieriness and your ardour for the implementation of your projects. However, the danger is that your self-assurance may become an agent for rebellion or for indiscipline, in which case, it would play out against your interests.

This present from the stars is by no means insignificant, Al Pacino, the house of career, hosting the planet of Greater Fortune, can but favour your professional life. As time unfolds, it develops into a most pleasant scope. Sooner or later, it brings about success and your peers' recognition. You do not fear responsibilities, and you face them properly.

The planet Jupiter symbolizes expansion, broadness and generosity. Jupiter is associated with the functions of synthesis, enthusiasm and optimism. In your natal chart, his house position is more important than his sign position because, like Saturn, Uranus, Neptune and Pluto, he is a slow planet. Many people born in the same period have Jupiter in the same sign. This is the reason why the sign occupied here is less meaningful than when it is occupied by the so-called fast planets, i.e. the Sun, the Moon, Mercury, Venus and Mars. Therefore, some caution is to be exercised as you read what follows.

Jupiter in Aries amplifies your tendency to charge ahead and your self-assertiveness. You have leadership qualities, you are optimistic and you can mix the boldness with the will to succeed that are specific to Aries. Management ability, leadership and independence: your enthusiasm is a real asset for your life and for your charm!

Your Serious Side

Material, practical or frivolous matters (comfort etc.) are highlighted. Obstinacy, even stubbornness, and the instinct of possession may get you into trouble. On the other hand, you can learn how to step back and to improve the practical management of your assets.

Your responsibilities, Al Pacino, constantly increase, slowly, but steadily, as years go by. Your acute sense of duty, your good management of time, your long-term vision, and your moral rigour are the qualities which contribute to your inexorable rise to power with, deep down, odd feelings of anxiety.

With your definite taste for power or for success, you work your way up the top place. But the danger to fall is strong. You need as much persistence to reach the heights of your career, as to... remain there! Many Heads of State have this configuration, at the same time beneficial and a source of potential disappointments if too much importance and energy are dedicated to it. Indeed, climbing to the top should be only one facet of life.

The planet Saturn symbolizes contraction, effort, time, limitation and concentration. Saturn eliminates anything that is not authentic, sooner or later. It is impossible to cheat him as he gives an irresistible desire to form a coherent whole with oneself, in responsible and wise ways. He is the great purifier. He represents our limitations but also our truth. In your natal chart, the house position where Saturn is posited is more important than his sign position because, like Jupiter, Uranus, Neptune and Pluto, he is a slow planet. Many people born in the same period have Saturn in the same sign. This is the reason why the sign occupied here is less meaningful than when it is occupied by the so-called fast planets, i.e. the Sun, the Moon, Mercury, Venus and Mars. Therefore, some caution is to be exercised as you read what follows.

Saturn in Taurus decreases your appetite for material things but he endows you with more caution and wisdom in the financial area in general. He also gives you a more obstinate and deeper nature.

A Few Special Points

Your Uniqueness and Your Utopias

This is one of the most potent configurations. Unexpected disruptions of considerable intensity often occur on the factual plane. Embracing changes is the basis of the success of your destiny, which is very likely to include extreme variations, sometimes towards the most glorious heights, sometimes towards ordeals that you face with courage and determination, despite your unpreparedness.

Originality is certainly the context of your professional life or your destiny, in one way or another. Whether it is expressed through your very special area of expertise (high technology, space, aviation, astrology, television, etc.) or through the totally hectic nature of your progression (sudden changes of orientation), you are not able to plan what is coming next. Unforeseen events undertake to make a clean sweep of your certainties. This may offer many advantages if your state of mind is ready to approach life as a journey where your only freedom is to adjust in the best possible way to new emerging situations.

Most of the time, you are very independent, very keen to show your professional talents in a unique and modern way. You are a kind of pioneer or of rebel in your area, which allows you to better assert your genius.

Your Inspiration and Your Illusions

The way you think and communicate, as well as the organization of your trips, are deeply emotional and sensitive and lack rigour. On the other hand, you are able to "sense" things directly. Your mind gains in synthesizing ability what it loses in analysis capacity.

You have bohemian ideas, and the way you look at things is quite flexible. As you daydream and you indulge in your emotions, you may be cut off from reality and may lose important relationships! Do not run away, do not tell lies, and take advantage of the best aspects of this configuration: intuition and inspiration.

Your Passion and Your Authority

You have an unconscious desire to experience your ordeals to the bitter end, regardless of their consequences for your future.

Your clear-sightedness and your investigative capacity enable you to solve mysteries in a deep and intuitive way. But they may also lead you into conflicts, crises and confrontations with enemies who are ruthless, at least in your opinion; having said this, you precisely have the ability to cope with them and to deeply evolve in the process.

You are predisposed to go through ordeals, on the human plane or in the area of health. The pains thus triggered contribute to transform you more rapidly than the majority of people. Your destiny is certainly to progress forward and, above all, to consider such ordeals as stepping-stones instead of signs of some unhealthy fatality.

The Tradition indicates that you may be prompted to take action in humanitarian causes, all the more so, because your personal ordeals incite you to readily help others, even though this tendency is not at once visible.

Your Isolated Planets

In general, the ten planets of the chart are connected to other planets by major or minor astrological aspects. It is owing to those ties that the planets' energies can manifest in the chart owner's personality and play out within safeguards according to a specific tonality.

It seldom happens that in a natal chart, a planet is totally disconnected from the nine other planets.

Astrologers have observed that when such a case occurs, the person feels the energy of the unaspected planet in quite a singular way, very jerky and powerful at the same time. Thus, for instance, the famed astrologer Jean-Baptiste Morin de Villefranche wrote that "an unaspected planet heralds that something strange or extraordinary will take place regarding the meanings of the house in which the said planet is posited" (source : l'astrologie selon Morin).

Rules for detecting an unaspected planet: among all the testimonies that we have reviewed to this day, based on our experience, we tend to agree with American astrologer Janis Huntley who accepts seven aspects, which involve the zodiacal twelve sections of 30 degrees. The aspects to be considered are the conjunction (0 degree, cooperation or tension), the semi-sextile (30 degrees), the sextile and the trine (60 and 120 degrees respectively, aspects of cooperation), the square and the opposition (90 and 180 degrees respectively, tensed aspects), and the quincunx (150 degrees, slightly tensed). In this detection, the chart's angles are not taken into account.

In any case, it is important to remember that an isolated planet clearly expresses its influence when it is a personal planet. Thus, when the Sun, the Moon, Mercury, Venus, or Mars is isolated, it is certain that the effects described by Jean-Baptiste Morin de Villefranche will become manifest. As for Jupiter, Saturn, Uranus, Neptune, and Pluto, one must be cautious because the volume of cases documented is not yet large enough.

Your chart has no isolated planet, and this particular case does not apply to you.

Annex 1: Your Minor Dominants

The five following dominants are less significant than those described at the beginning of your report. They may not be strongly felt. In some cases, they add several minor details to the analysis of your character, but they are rather for curiosity purposes. It is not necessary to take them into account when you first read your portrait.

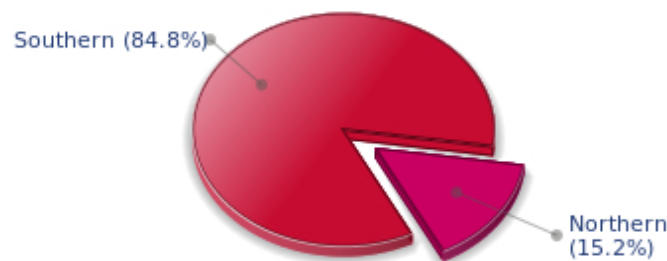
Your Planetary Repartitions: Northern, Southern, Eastern and Western Hemispheres

The axis linking the 1st house's cuspid (the Ascendant) to the 7th house's cuspid - the Descendant - divides the zodiac into two bowls, a superior bowl, in the South, and an inferior bowl in the North. Quoting an expression by the famous American astrologer Rudhyar, the Southern part and the Northern part correspond to two functions: "being" and "doing". Other concepts are also associated with this North and South distribution, such as introversion - Northern hemisphere - and extraversion - Southern hemisphere - being or appearances, inner life or external life, reflection or action, dreaming one's life or living one's dreams, the abstract or the concrete, backstage or limelight.

This is not about determination but about personal inclination: thus, some people will be thrown into public life despite a prominent Northern hemisphere. If this happens, however, it will not be due to their will, their taste or their deep nature. Conversely, a prominent Southern hemisphere will not bring about a famous destiny to its owner, even if he tends to turn the spotlight on himself, or if he looks for a more active life. It is a matter of deep nature and natural inclination. Of course, none of the typologies is "superior" to another.

In your birth chart, Al Pacino, the ten main planets are distributed as follows:

Your Northern and Southern Hemispheres



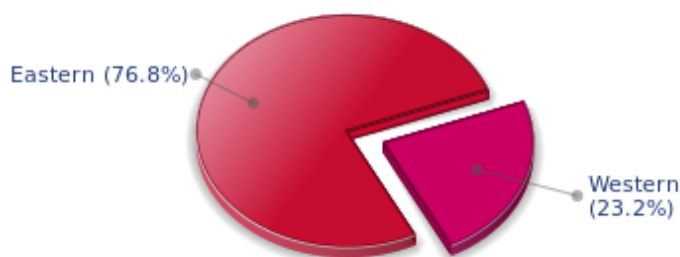
Al Pacino, the predominance of planets in the Southern hemisphere prompts you to take action, to draw attention on yourself, and to make your actions and what you have in mind visible to everyone. Sometimes, without giving a single thought to, and to the detriment of, a richer inner life and a deeper and wiser reflection. Action and communication are inevitable in your opinion, and you tend to think that the only thing that matters is what is seen! This is not always true, and it is up to you to progress through the development of inner qualities such as meditation, solitude and imagination so as to become stronger.

The birth chart is divided into two other parts, Eastern and Western, by the axis linking the Midheaven to the Imum Coeli.

The Eastern part, on the Ascendant side, shows the person's ego, will, magnetism, and vitality, whereas the Western part, on the Descendant side, symbolizes other people, communication, relationships and their influence, as well as flexibility and adaptability.

Al Pacino, here is the planetary repartition in your Eastern and your Western hemispheres:

Your Eastern and Western Hemisphere:



The predominance of planets in the Eastern hemisphere of your chart enables you, Al Pacino, to assert yourself and to rely on your determination: you know what you want and you have a tendency to take action and to decide with your personal goals as priorities, even if they can be in contradiction with what others think.

A definite asset... provided that you never make mistakes in your choices. You should pay more attention to your entourage in order to counterbalance your nature and to take advantage of your assets wisely. The danger is that you may be too authoritarian and not conciliating enough. Strong determination coupled with flexibility and acute sense of communication are qualities you should develop.

Your Yin and Yang Polarity

The twelve signs are divided into two polarities, called active or passive, or sometimes masculine and feminine, positive and negative, Yang and Yin. This classification corresponds to two quite distinct tonalities, the first one bringing extraversion, action, self-confidence and dynamism, the second one, introversion, reactivity, reflection and caution. None is superior to the other, each group has its own assets and shortcomings. Odd signs - Aries, Gemini, Leo, Libra, Sagittarius and Aquarius - belong to the first group, whereas even signs - Taurus, Cancer, Virgo, Scorpio, Capricorn and Pisces - belong to the second group.

Your Yin and Yang Polarity



According to the disposition and qualities of your planets and angles, you are rather influenced by Yang energy, the active polarity, Al Pacino: more concerned about actions than reflection, you sometimes rush without standing back and without the deepness that is needed. However, your spontaneity prompts you to take fresh starts, even after repeated failures caused by your rashness.

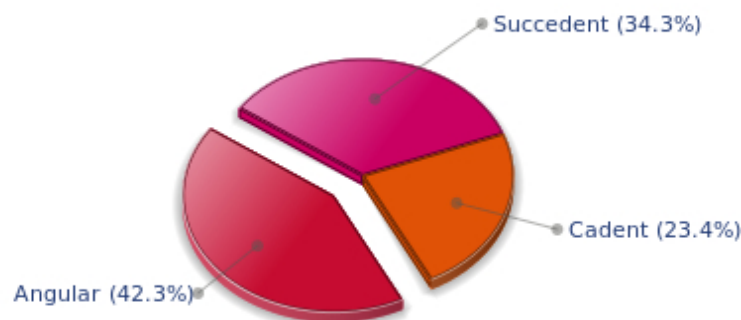
Your Houses' Accentuations

Houses are split up into three groups: angular, succedent and cadent.

The first ones are the most important ones, the most "noticeable" and energetic houses. They are the 1st, 4th, 7th and 10th houses. Their cuspides correspond to four famous angles: Ascendant for the 1st house, Imum Coeli for the 4th house, Descendant, opposite the Ascendant, for the 7th house and Midheaven for the 10th house, opposite the Imum Coeli.

Planets are evaluated according to a whole set of criteria that includes comprehensive Western astrology rules. At their turn, planets emphasize specific types of houses, signs, repartitions etc., as previously explained.

Your Houses' Accentuations



Your angular houses, namely, the 1st, 4th, 7th and 10th houses, are very emphasized in your chart, Al

Pacino: according to the Tradition, they are the strongest and most dynamic houses. Should the rest of your chart concur, angular houses suggest that you are an enterprising, energetic and assertive man. Indeed, angular houses are said to generate impulsions and to give a powerful and domineering personality.

Unusual fates are often linked to a predominance of angular houses, but this is only a partial indication...

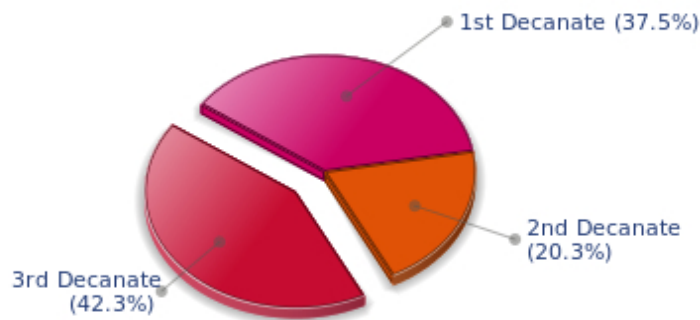
Your Esoteric Decanates

Each sign contains 30 degrees and can be divided into three equal parts: the decanates. The Tradition indicates that specific meanings can be associated to each of the three decanates. Their sphere of activity is usually limited to the Sun sign, however, it is even more interesting to observe the distribution of all the planets in the chart to get an idea of the respective importance of the three decanates, which can complement the description of the personality.

These meanings must be considered with the greatest caution. Indeed, they are minor characteristics that can only underline other outstanding traits of character.

Traditionally, the first decanate highlights the characteristics of the sign where a planet is located. The two other decanates correspond to sub-dominant planets, depending on the nature of each sign. This system leads to a multiplication of meanings and it is impossible to have a clear understanding: here, we prefer to give only the meaning of one decanate in comparison with the other two, within the birth chart as a whole. Again, the greatest caution is needed with regard to this minor indication as it is not always reliable: it is not essential that you read these texts in the beginning. You can get back to them later on, once you have read more important interpretations

Your Esoteric Decanates



The third decanate, which means the part between 20° and 30° of any zodiacal sign, prevails in your natal chart, Al Pacino. It contains the degrees of spirituality, traditionally more delicate to deal with, since they incline towards evolution and therefore, destabilizations. Individuals with an emphasised third decanate may have deeper sensitivity than most people, which often brings ordeals but also spiritual rewards.

Annex 2: Karmic Study

The karmic theme is a good complement to the psychological portrait, or natal chart. This analysis is based on the positions of the Lunar Nodes, the Black Moon and the Part of Fortune: they are also called fictitious points and describe the spiritual purpose of your destiny. Because there is in all of us an experience and a quest, our life is an evolutionary journey... provided that we head towards the right direction, of course! Indian astrologers highly prize the Nodes axis (North Node and South Node). It is the Ariadne's thread that we are invited to follow. The Black Moon indicates the sector where we are most likely to transform or to transcend, whereas the Part of Fortune points out the area where we can easily express our specificity.

The Lunar Nodes: a spiritual path

Lunar Nodes have their roots in the Indian tradition and they are based on a simple concept: each of us have a mission of their own, here on earth, a destiny, a course. According to the Indian philosophy, life is a school: the nodal axis describes our past experiences (South Node, our karma, our spiritual inheritance or our previous lives), and our aims on earth (North Node, our Dharma, the purpose of our current incarnation). This is the reason why the study of the lunar nodes is called "Karmic astrology". Here, we shall not step into hypothetical past lives. Wherever our current trends may come from, all that really matters is that we become aware of the purpose of our life, its finality and our dharma. We are likely to understand our life purpose around the age of 37, when the Lunar Nodes return to their natal position.

During the first part of your life, you manifested an acute sense of challenge, a taste for personal initiatives and an unflinching fighting spirit: these qualities prove helpful in handling any possible setback today. However, you must make an effort to accept your entourage and adopt more open and accommodating attitudes! Life teaches that you must become more sociable and develop the flexible behaviour that you lack. Do not play around with mavericks; It is important that you earn your close friends' affection and that you rely on their collaboration. You slowly become more aware of other people's reasons, of their desires and their concerns. Your destiny may be influenced by relationships. If you had a tendency to provoke people or events, now you have gained complementary qualities: diplomacy and human tact, cleverness in the art of reconciling opposite views. It is true that it required a huge personal effort!

The Lunar Nodes highlight all types of discoveries and explorations. There is a strong desire for travels, whether actual trips or spiritual, inner ones. Since your childhood, you are particularly interested in unlimited spaces and total freedom. You never trusted smothering attachments and you always allow your thoughts and actions a free hand. The danger is that your life may be unstable because you so badly need to evolve and to discover... Life is an eternal quest of something else, some vital but hidden dimension that is beyond you. Therefore, it is difficult for you to blossom when your family or work environment is routine. However, it is important that you control your wild tendency (the other side of the coin of the wonderful freedom of thought): life requires more sociability. It does not mean that you must accept a conformism that is too far from your inner aspirations. More than other people, you need to develop your relations, your exchanges and your dialogues. In this regard, your destiny is marked by communication.

Lilith or the Dark Moon

The Black Moon is the spark of refusal and distance that is dormant in all of us. Depending on the sign where she is found in your chart, she highlights the desire to transform and to sublimate a part of your

life. The Black Moon is unfathomable and mysterious. She gives a different dimension to the sector she touches. Her manifestations are subtle; nonetheless, she is powerful, implacable, demanding to the extreme... The Black Moon is also called Lilith. She is the inner flame of your heroism and insubordination.

The Black Moon here readily sacrifices the ties of this world to the essential: spiritual life and renunciation, fusion into an ideal. Your dreams are strange: life vagaries do not matter since your quest is internal. In the course of your progression, you may often show an unusual faculty of detachment. Although the reasons why you give up a given road for another one may not be always understood... though deep down, you know the reason why.

The notion of freedom takes a special meaning: to be free does not only mean being able to move as you please here and there, nor does it mean having a few hours of leisure available. Above all, it means being able to lead a spiritual quest, to access a different dimension in life: to encounter, to travel, to love and to never be hampered by contingencies, never be slowed down by daily life. That'll take some doing! The comfortable routine of the contemporary world, in this regard, puts you off.

The Part of Fortune in House

The Part of Fortune is a very ancient fictitious point that depends on the lunar phase at the time of birth. The astrological house tenanted is particularly strengthened. In your chart, the Part of Fortune is in the 9th house: you live for adventures and you want to go beyond the limits of your abilities with a view to discover new schools of thought. The key to your motivations is travel under all its forms, geographical, spiritual or inner exploration. You need to broaden your field of consciousness, which can be too ambitious a word to describe simple experiences: the taste for foreign or strange cultures, accepting and understanding differences.

Retrograde Planets

The karmic tradition insists on the issues related to the so-called retrograde planets. They are considered to be the inheritance of a past that was not well experienced, a sort of unfinished business. The interpretations of the retrogradation may seem negative or excessive to you. However, you may relate to a scenario that you have often and repeatedly experienced... as if you underwent several setbacks that all have the same cause. Until the day you become aware of it and you can free yourself from it! Through the slow integration of these planetary energies, you will be able to overcome your difficulties and to pay your karmic debt. Actually, each retrograde planet highlights an opportunity for evolution. Nothing can be achieved without the will to grow spiritually and to defeat your own demons.

Neptune retrograding concerns spirituality. You may have expressed early in life a few reluctances about the subtle world of faith. You may have ignored destiny's signs and winks and you preferred to stick to your certainties, to a rigorous and objective control of your life. You dread your own aspirations and you readily trust others': this causes a lack of autonomy and the feeling that you may not receive as much as you give. However, several delusions teach you that you must relativize your calculating and methodical attitude and open up to the irrationality of love in order to find an inner and more spiritual progression. Embracing the invisible is a process that unfolds as years and experiences go by. Your own generosity increases as you become aware of your entourage's generosity.

N.B: modern astrology attaches less and less importance to the principles of retrograding planets.

Conclusion

A few remarks are needed here in order to allow you to fully take advantage of your astrological portrait: firstly, do not forget that a birth chart is also a photograph of the sky at birth and a structure that not only contains the personality's characteristics, but also its potential evolution.

We all know that, in real life, people begin to know themselves when they are in their forties, or even later. Likewise, several traits of character in a portrait may seem surprising: in most cases, it means that such features are not yet developed.

Some personalities reveal themselves late in life, whereas others are more precocious. It must be remembered that psychological structures are in a state of continuous evolution because they are influenced by unfolding events and gradual maturity. We can never underline strongly enough the "mobile" nature of the personality, throughout a lifetime.

On the other hand, it is difficult to discriminate what is "already present" at this moment in your life when you are reading your chart's interpretation, from what will appear later in the logic of your evolution: you must sort out all the pieces of information provided and, in most cases, you will see that your astrological portrait is helpful for your endeavours to know yourself better.

Finally, several readings of an astrological portrait are usually necessary in order to absorb all its different meanings and to evaluate the relevance of each character trait.

In any case, better self-knowledge obviously contributes to faster personal blossoming, and it is undoubtedly one of astrology's major roles: contributing to know oneself better, in order to improve more rapidly, to deal with one's weaknesses and to avoid its drawbacks, and to take advantage of one's assets as efficiently as possible.
